

# **Edgewater Tree Inventory**

## and Waterfront Vegetation Survey

---

January 22, 2010

Prepared by : Allison Tree Care, Inc.

Submitted to the City of Madison  
Plan Commission  
02/04/2010

Ken Saiki Design contracted with Allison Tree Care, Inc. (ATC) to conduct an inventory of select trees near the proposed construction site at the Edgewater Hotel, 666 Wisconsin Avenue, Madison, WI. A site plan prepared by BT Squared, Inc. was provided to identify the area of concern. The inventory was conducted during the week of January 18, 2010 for ATC by R. Bruce Allison, ASCA Registered Consulting Arborist #272. Trees in the area to the northeast of the existing building were identified. Trunk diameter size in inches, measured at 4.5 feet elevation (DBH), was noted. The general condition was rated on a scale of Good, Fair, Poor and comments regarding location or notable defects were recorded. The inventory results are reported in the table below. An approximate location of each tree is noted by the placement of identification numbers 1-56 on the attached partial site plan. Photographs with captions are included to further illustrate the nature of the inventoried trees.

Only trees with a trunk diameter of 6 inches or greater were included. Understory saplings in Parcel 4 are primarily volunteer ash, elm, mulberry, boxelder and hackberry. Of the 56 trees inventoried 22 are ash (39%), 11 are poplar (20%) and 7 are basswood (13%). Only those in the parking lot area are planted landscape trees. The oldest trees in Parcel 4 and the adjacent Guardian Life Insurance property are the three red oaks, 1 white oak and 1 shagbark hickory. The red oaks are generally in poor condition with extensive accumulated crown deadwood and significant trunk and scaffold limb decay. The trees on the Guardian Life Insurance property were included in the inventory as requested.

The bulging at the trunk base of the white oak is suggestive of internal decay. A micro-drill resistance test to measure the internal condition of the trunk is recommended prior to making a decision regarding efforts to protect that tree. As always on proposed construction sites, a tree protection plan including fencing and equipment access restrictions is recommended to protect those trees designated for preservation in and around the proposed building zone.

INVENTORY:

ID#	Species	DBH	Condition	Comments
1	Linden	12	Good	parking lot
2	Hackberry	24	Good	parking lot; rocks at base
3	Ash	21	Fair	parking lot; canker wound
4	Crabapple	8	Fair	parking lot; multi-trunk; cankers
5	Crabapple	8	Good	parking lot; multi-trunk
6	Crabapple	8	Fair	parking lot; multi-trunk; canker
7	Birch	8	Good	parking lot; multi-trunk
8	NW Maple	21	Good	parking lot
9	Sugar Maple	19	Good	parking lot
10	Ash	18	Good	parking lot
11	Ash	12	Good	parking lot
12	Ash	24	Good	parking lot
13	Boxelder	10	Fair	Parcel 4
14	Ash	13	Fair	Parcel 4
15	Ash	9	Fair	Parcel 4
16	Ash	8	Fair	Parcel 4
17	Ash	14	Fair	Parcel 4
18	Ash	9	Fair	Parcel 4
19	Ash	6	Fair	Parcel 4
20	Ash	12	Fair	Parcel 4
21	Ash	8	Fair	Parcel 4
22	Ash	8	Fair	Parcel 4
23	Ash	14	Fair	Parcel 4
24	Ash	12	Fair	Parcel 4
25	Red Oak	48	Poor	Parcel 4; large trunk cavity, decay
26	Ash	12	Fair	Parcel 4
27	Red Oak	48	Poor	Parcel 4; cavity scaffold limb, decay
28	Red Oak	32	Poor	Parcel 4; decline, lean to building
29	Poplar	18	Fair	Parcel 4
30	Elm	12	Fair	Parcel 4
31	Ash	6	Fair	Parcel 4
32	Ash	8	Fair	Parcel 4
33	Ash	14	Fair	Parcel 4
34	Poplar	20	Poor	Parcel 4; note 3 small yews nearby
35	Poplar	24	Poor	Parcel 4
36	Poplar	26	Poor	Parcel 4
37	Poplar	22	Poor	Parcel 4; multi-trunk
38	Poplar	24	Poor	Parcel 4
39	Poplar	24	Poor	
40	Basswood	22	Fair	
41	Basswood	18	Fair	

42	Basswood	14	Fair	
43	Basswood	16	Fair	
44	Basswood	16	Poor	
45	Basswood	28	Poor	
46	Basswood	16	Fair	
47	Poplar	18	Fair	
48	Poplar	18	Fair	
49	Poplar	18	Fair	
50	Ash	18	Fair	
51	Poplar	16	Fair	
52	White Oak	36	Fair	Deadwood, trunk bulge at base
53	Hickory	24	Good	In a cluster of smaller ash
54	Juniper shrub	8	Fair	5 feet tall
55	Ash	15	Fair	
56	Ash	22	Fair	

PHOTOGRAPHS:



Photo 1 Parking lot trees



Photo 2 Parking Lot trees



**Photo 3 Parcel 4 South End**



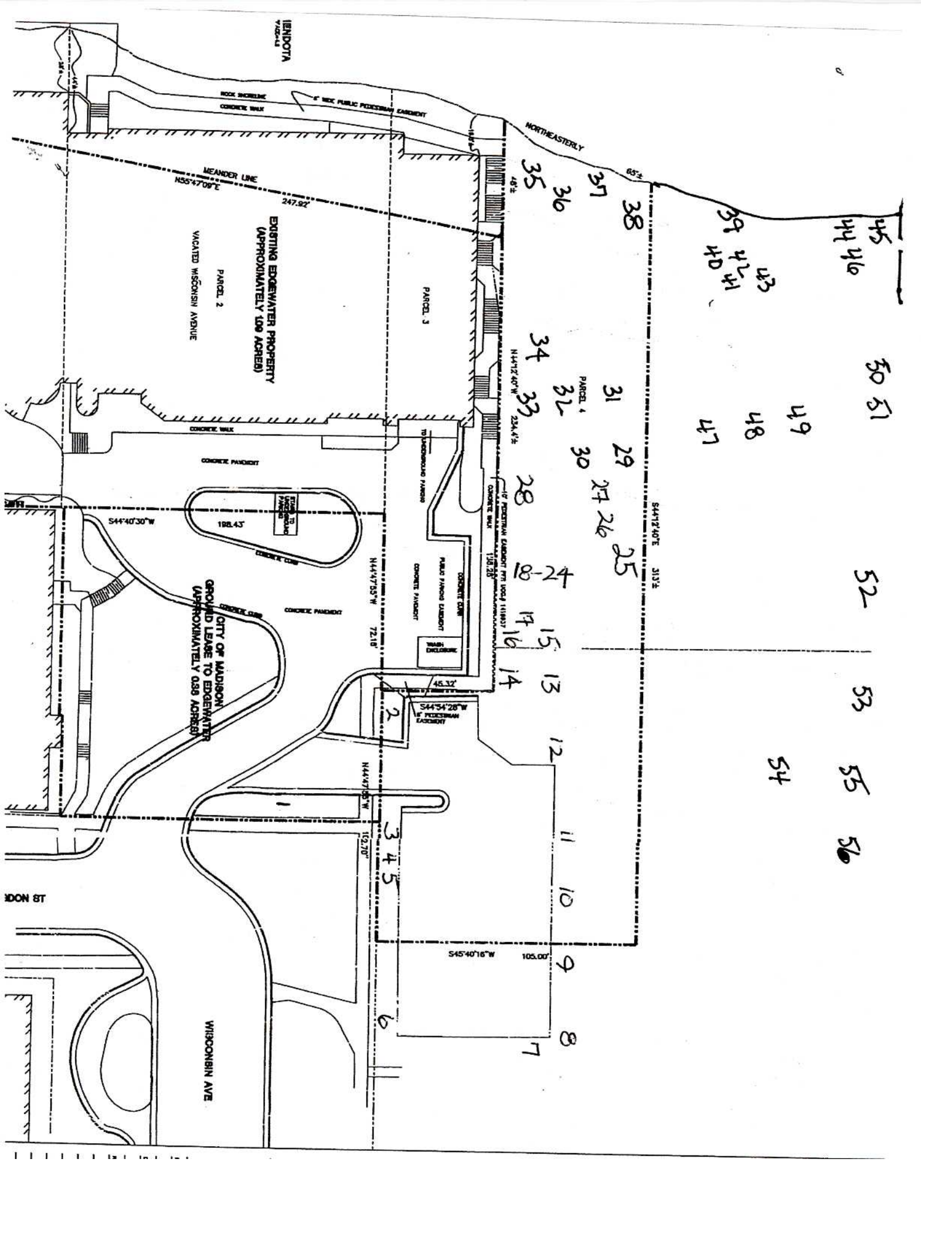
**Photo 4 Parcel 4 Middle area including Red Oaks**



Photo 5 Parcel 4 lake end with poplars



Photo 6 White Oak in group of trees east of Parcel 4



WISCONSIN AVENUE

MEANDER LINE  
N55°47'09" E  
247.82'

PARCEL 2  
VACATED WISCONSIN AVENUE

CONCRETE WALK

CONCRETE PAVEMENT

CONCRETE CURB

CONCRETE CURB

CONCRETE CURB

CONCRETE CURB

CONCRETE CURB

WISCONSIN AVENUE

CONCRETE WALK

CONCRETE PAVEMENT

CONCRETE CURB

CONCRETE CURB

CONCRETE CURB

CONCRETE CURB

CONCRETE CURB

CONCRETE CURB

CONCRETE CURB

CONCRETE WALK

CONCRETE PAVEMENT

CONCRETE CURB

CONCRETE CURB

CONCRETE CURB

CONCRETE CURB

CONCRETE CURB

CONCRETE CURB

CONCRETE CURB

CONCRETE CURB

CONCRETE WALK

CONCRETE PAVEMENT

CONCRETE CURB

CONCRETE CURB

CONCRETE CURB

CONCRETE CURB

CONCRETE CURB

CONCRETE CURB

CONCRETE CURB

CONCRETE CURB

CONCRETE WALK

CONCRETE PAVEMENT

CONCRETE CURB

CONCRETE CURB

CONCRETE CURB

CONCRETE CURB

CONCRETE CURB

CONCRETE CURB

CONCRETE CURB

CONCRETE CURB

CONCRETE WALK

CONCRETE PAVEMENT

CONCRETE CURB

CONCRETE CURB

CONCRETE CURB

CONCRETE CURB

CONCRETE CURB

CONCRETE CURB

CONCRETE CURB

CONCRETE CURB

CONCRETE WALK

CONCRETE PAVEMENT

CONCRETE CURB

CONCRETE CURB

CONCRETE CURB

CONCRETE CURB

CONCRETE CURB

CONCRETE CURB

CONCRETE CURB

CONCRETE CURB

CONCRETE WALK

CONCRETE PAVEMENT

CONCRETE CURB

CONCRETE CURB

CONCRETE CURB

CONCRETE CURB

CONCRETE CURB

CONCRETE CURB

CONCRETE CURB

CONCRETE CURB

CONCRETE WALK

CONCRETE PAVEMENT

CONCRETE CURB

CONCRETE CURB

CONCRETE CURB

CONCRETE CURB

CONCRETE CURB

CONCRETE CURB

CONCRETE CURB

CONCRETE CURB

CONCRETE WALK

CONCRETE PAVEMENT

CONCRETE CURB

CONCRETE CURB

CONCRETE CURB

CONCRETE CURB

CONCRETE CURB

CONCRETE CURB

CONCRETE CURB

CONCRETE CURB

WISCONSIN AVENUE

MEANDER LINE  
N55°47'09" E  
247.82'

PARCEL 2  
VACATED WISCONSIN AVENUE

CONCRETE WALK

CONCRETE PAVEMENT

CONCRETE CURB

CONCRETE CURB

CONCRETE CURB

CONCRETE CURB

CONCRETE CURB

WISCONSIN AVENUE

CONCRETE WALK

CONCRETE PAVEMENT

CONCRETE CURB

CONCRETE CURB

CONCRETE CURB

CONCRETE CURB

CONCRETE CURB

CONCRETE CURB

CONCRETE CURB

CONCRETE WALK

CONCRETE PAVEMENT

CONCRETE CURB

CONCRETE CURB

CONCRETE CURB

CONCRETE CURB

CONCRETE CURB

CONCRETE CURB

CONCRETE CURB

CONCRETE CURB

CONCRETE WALK

CONCRETE PAVEMENT

CONCRETE CURB

CONCRETE CURB

CONCRETE CURB

CONCRETE CURB

CONCRETE CURB

CONCRETE CURB

CONCRETE CURB

CONCRETE CURB

CONCRETE WALK

CONCRETE PAVEMENT

CONCRETE CURB

CONCRETE CURB

CONCRETE CURB

CONCRETE CURB

CONCRETE CURB

CONCRETE CURB

CONCRETE CURB

CONCRETE CURB

CONCRETE WALK

CONCRETE PAVEMENT

CONCRETE CURB

CONCRETE CURB

CONCRETE CURB

CONCRETE CURB

CONCRETE CURB

CONCRETE CURB

CONCRETE CURB

CONCRETE CURB

CONCRETE WALK

CONCRETE PAVEMENT

CONCRETE CURB

CONCRETE CURB

CONCRETE CURB

CONCRETE CURB

CONCRETE CURB

CONCRETE CURB

CONCRETE CURB

CONCRETE CURB

CONCRETE WALK

CONCRETE PAVEMENT

CONCRETE CURB

CONCRETE CURB

CONCRETE CURB

CONCRETE CURB

CONCRETE CURB

CONCRETE CURB

CONCRETE CURB

CONCRETE CURB

CONCRETE WALK

CONCRETE PAVEMENT

CONCRETE CURB

CONCRETE CURB

CONCRETE CURB

CONCRETE CURB

CONCRETE CURB

CONCRETE CURB

CONCRETE CURB

CONCRETE CURB

CONCRETE WALK

CONCRETE PAVEMENT

CONCRETE CURB

CONCRETE CURB

CONCRETE CURB

CONCRETE CURB

CONCRETE CURB

CONCRETE CURB

CONCRETE CURB

CONCRETE CURB

WISCONSIN AVENUE

MEANDER LINE  
N55°47'09" E  
247.82'

PARCEL 2  
VACATED WISCONSIN AVENUE

CONCRETE WALK

CONCRETE PAVEMENT

CONCRETE CURB

CONCRETE CURB

CONCRETE CURB

CONCRETE CURB

CONCRETE CURB

WISCONSIN AVENUE

CONCRETE WALK

CONCRETE PAVEMENT

CONCRETE CURB

CONCRETE CURB

CONCRETE CURB

CONCRETE CURB

CONCRETE CURB

CONCRETE CURB

CONCRETE CURB

CONCRETE WALK

CONCRETE PAVEMENT

CONCRETE CURB

CONCRETE CURB

CONCRETE CURB

CONCRETE CURB

CONCRETE CURB

CONCRETE CURB

CONCRETE CURB

CONCRETE CURB

CONCRETE WALK

CONCRETE PAVEMENT

CONCRETE CURB

CONCRETE CURB

CONCRETE CURB

CONCRETE CURB

CONCRETE CURB

CONCRETE CURB

CONCRETE CURB

CONCRETE CURB

CONCRETE WALK

CONCRETE PAVEMENT

CONCRETE CURB

CONCRETE CURB

CONCRETE CURB

CONCRETE CURB

CONCRETE CURB

CONCRETE CURB

CONCRETE CURB

CONCRETE CURB

CONCRETE WALK

CONCRETE PAVEMENT

CONCRETE CURB

CONCRETE CURB

CONCRETE CURB

CONCRETE CURB

CONCRETE CURB

CONCRETE CURB

CONCRETE CURB

CONCRETE CURB

CONCRETE WALK

CONCRETE PAVEMENT

CONCRETE CURB

CONCRETE CURB

CONCRETE CURB

CONCRETE CURB

CONCRETE CURB

CONCRETE CURB

CONCRETE CURB