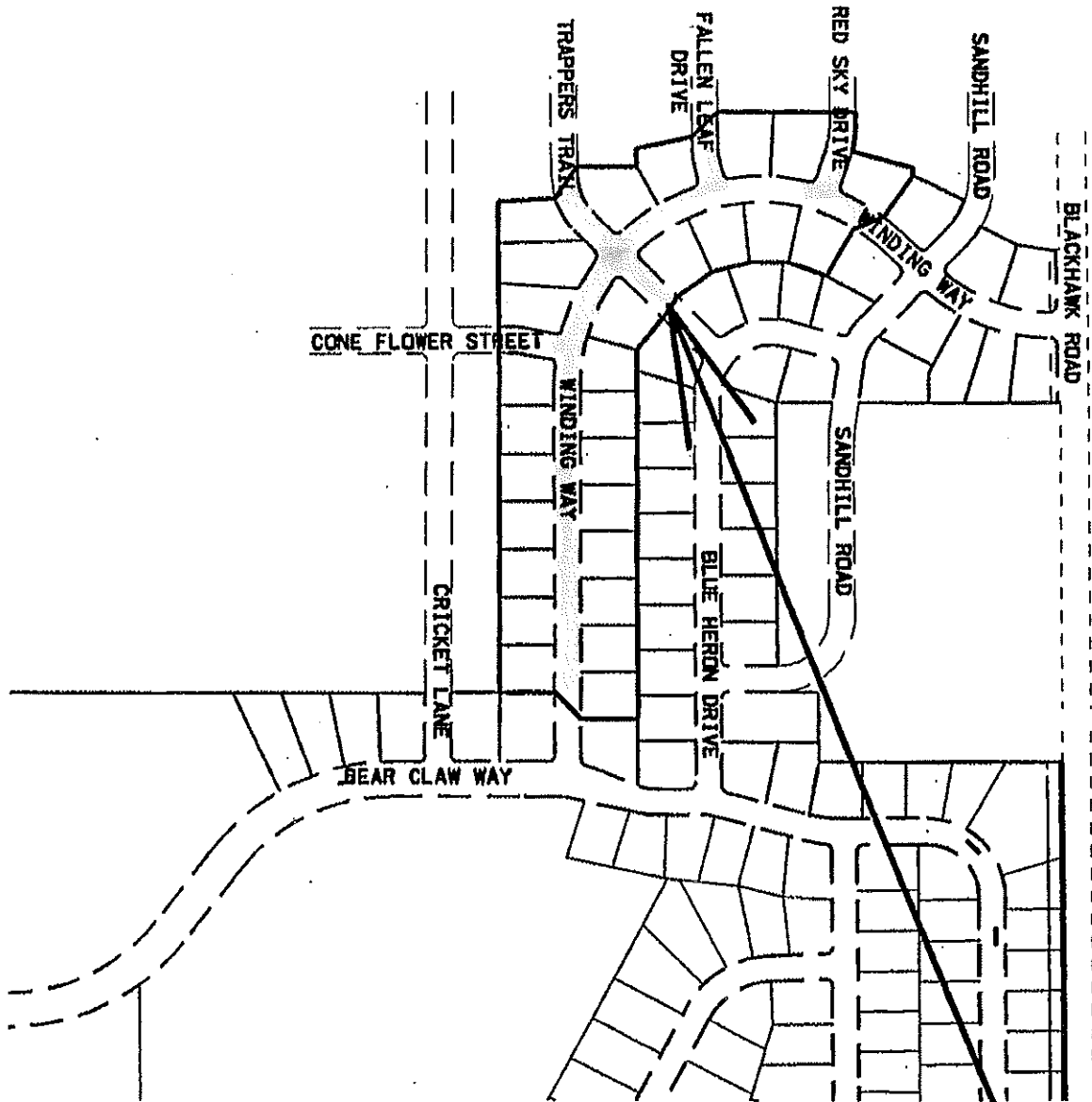


STREET PLANT VALUE  
BITUMINOUS SURFACE ONLY

BLACKHAWK SUBDIVISION SIXTH ADDITION - PHASE II  
53B1857

| STREET                | Description                   | From | To | Quantity | Unit | Unit Cost | Total Cost  |
|-----------------------|-------------------------------|------|----|----------|------|-----------|-------------|
| WINDING WAY           | 780 FT EAST OF CONE FLOWER ST |      |    | 771.79   | LF   | \$ 8.58   | \$ 6,619.40 |
| 32 FT WIDE (EG TO EG) |                               |      |    |          |      |           |             |
| MS LINK NO. 14088     |                               |      |    |          |      |           |             |
| WINDING WAY           | CONE FLOWER ST                |      |    | 246.88   | LF   | \$ 7.50   | \$ 1,852.73 |
| 32 FT WIDE (EG TO EG) |                               |      |    |          |      |           |             |
| MS LINK NO. 14094     |                               |      |    |          |      |           |             |
| WINDING WAY           | TRAPPERS TRL                  |      |    | 277.2    | LF   | \$ 7.50   | \$ 2,080.27 |
| 32 FT WIDE (EG TO EG) |                               |      |    |          |      |           |             |
| MS LINK NO. 14095     |                               |      |    |          |      |           |             |
| WINDING WAY           | FALLEN LEAF DR                |      |    | 257.13   | LF   | \$ 7.50   | \$ 1,929.66 |
| 32 FT WIDE (EG TO EG) |                               |      |    |          |      |           |             |
| MS LINK NO. 14099     |                               |      |    |          |      |           |             |
| WINDING WAY           | RED SKY DR                    |      |    | 97       | LF   | \$ 7.50   | \$ 727.95   |
| 32 FT WIDE (EG TO EG) |                               |      |    |          |      |           |             |
| MS LINK NO. 14100     |                               |      |    |          |      |           |             |
| WINDING WAY           | 95 FT NORTH OF RED SKY DR     |      |    | 117      | LF   | \$ 7.50   | \$ 878.04   |
| 32 FT WIDE (EG TO EG) |                               |      |    |          |      |           |             |
| MS LINK NO. 14104     |                               |      |    |          |      |           |             |
| WINDING WAY           | WINDING WAY                   |      |    | 119      | LF   | \$ 7.50   | \$ 893.05   |
| 32 FT WIDE (EG TO EG) |                               |      |    |          |      |           |             |
| MS LINK NO. 14096     |                               |      |    |          |      |           |             |
| WINDING WAY           | WINDING WAY                   |      |    | 175      | LF   | \$ 7.50   | \$ 1,313.30 |
| 32 FT WIDE (EG TO EG) |                               |      |    |          |      |           |             |
| MS LINK NO. 14093     |                               |      |    |          |      |           |             |
| WINDING WAY           | 175 FT NE OF WINDING WAY      |      |    | 105      | LF   | \$ 7.50   | \$ 787.98   |
| 32 FT WIDE (EG TO EG) |                               |      |    |          |      |           |             |
| MS LINK NO. 14097     |                               |      |    |          |      |           |             |
| WINDING WAY           | WINDING WAY                   |      |    | 136      | LF   | \$ 7.50   | \$ 1,020.62 |
| 32 FT WIDE (EG TO EG) |                               |      |    |          |      |           |             |
| MS LINK NO. 14098     |                               |      |    |          |      |           |             |
| WINDING WAY           | WINDING WAY                   |      |    |          |      |           |             |
| 32 FT WIDE (EG TO EG) |                               |      |    |          |      |           |             |
| MS LINK NO. 14098     |                               |      |    |          |      |           |             |
| WINDING WAY           |                               |      |    |          |      |           |             |
| 32 FT WIDE (EG TO EG) |                               |      |    |          |      |           |             |
| MS LINK NO. 14098     |                               |      |    |          |      |           |             |
| WINDING WAY           |                               |      |    |          |      |           |             |
| 32 FT WIDE (EG TO EG) |                               |      |    |          |      |           |             |
| MS LINK NO. 14098     |                               |      |    |          |      |           |             |
| WINDING WAY           |                               |      |    |          |      |           |             |
| 32 FT WIDE (EG TO EG) |                               |      |    |          |      |           |             |
| MS LINK NO. 14098     |                               |      |    |          |      |           |             |
| WINDING WAY           |                               |      |    |          |      |           |             |
| 32 FT WIDE (EG TO EG) |                               |      |    |          |      |           |             |
| MS LINK NO. 14098     |                               |      |    |          |      |           |             |
| WINDING WAY           |                               |      |    |          |      |           |             |
| 32 FT WIDE (EG TO EG) |                               |      |    |          |      |           |             |
| MS LINK NO. 14098     |                               |      |    |          |      |           |             |
| WINDING WAY           |                               |      |    |          |      |           |             |
| 32 FT WIDE (EG TO EG) |                               |      |    |          |      |           |             |
| MS LINK NO. 14098     |                               |      |    |          |      |           |             |
| WINDING WAY           |                               |      |    |          |      |           |             |
| 32 FT WIDE (EG TO EG) |                               |      |    |          |      |           |             |
| MS LINK NO. 14098     |                               |      |    |          |      |           |             |
| WINDING WAY           |                               |      |    |          |      |           |             |
| 32 FT WIDE (EG TO EG) |                               |      |    |          |      |           |             |
| MS LINK NO. 14098     |                               |      |    |          |      |           |             |
| WINDING WAY           |                               |      |    |          |      |           |             |
| 32 FT WIDE (EG TO EG) |                               |      |    |          |      |           |             |
| MS LINK NO. 14098     |                               |      |    |          |      |           |             |
| WINDING WAY           |                               |      |    |          |      |           |             |
| 32 FT WIDE (EG TO EG) |                               |      |    |          |      |           |             |
| MS LINK NO. 14098     |                               |      |    |          |      |           |             |
| WINDING WAY           |                               |      |    |          |      |           |             |
| 32 FT WIDE (EG TO EG) |                               |      |    |          |      |           |             |
| MS LINK NO. 14098     |                               |      |    |          |      |           |             |
| WINDING WAY           |                               |      |    |          |      |           |             |
| 32 FT WIDE (EG TO EG) |                               |      |    |          |      |           |             |
| MS LINK NO. 14098     |                               |      |    |          |      |           |             |
| WINDING WAY           |                               |      |    |          |      |           |             |
| 32 FT WIDE (EG TO EG) |                               |      |    |          |      |           |             |
| MS LINK NO. 14098     |                               |      |    |          |      |           |             |
| WINDING WAY           |                               |      |    |          |      |           |             |
| 32 FT WIDE (EG TO EG) |                               |      |    |          |      |           |             |
| MS LINK NO. 14098     |                               |      |    |          |      |           |             |
| WINDING WAY           |                               |      |    |          |      |           |             |
| 32 FT WIDE (EG TO EG) |                               |      |    |          |      |           |             |
| MS LINK NO. 14098     |                               |      |    |          |      |           |             |
| WINDING WAY           |                               |      |    |          |      |           |             |
| 32 FT WIDE (EG TO EG) |                               |      |    |          |      |           |             |
| MS LINK NO. 14098     |                               |      |    |          |      |           |             |
| WINDING WAY           |                               |      |    |          |      |           |             |
| 32 FT WIDE (EG TO EG) |                               |      |    |          |      |           |             |
| MS LINK NO. 14098     |                               |      |    |          |      |           |             |
| WINDING WAY           |                               |      |    |          |      |           |             |
| 32 FT WIDE (EG TO EG) |                               |      |    |          |      |           |             |
| MS LINK NO. 14098     |                               |      |    |          |      |           |             |
| WINDING WAY           |                               |      |    |          |      |           |             |
| 32 FT WIDE (EG TO EG) |                               |      |    |          |      |           |             |
| MS LINK NO. 14098     |                               |      |    |          |      |           |             |
| WINDING WAY           |                               |      |    |          |      |           |             |
| 32 FT WIDE (EG TO EG) |                               |      |    |          |      |           |             |
| MS LINK NO. 14098     |                               |      |    |          |      |           |             |
| WINDING WAY           |                               |      |    |          |      |           |             |
| 32 FT WIDE (EG TO EG) |                               |      |    |          |      |           |             |
| MS LINK NO. 14098     |                               |      |    |          |      |           |             |
| WINDING WAY           |                               |      |    |          |      |           |             |
| 32 FT WIDE (EG TO EG) |                               |      |    |          |      |           |             |
| MS LINK NO. 14098     |                               |      |    |          |      |           |             |
| WINDING WAY           |                               |      |    |          |      |           |             |
| 32 FT WIDE (EG TO EG) |                               |      |    |          |      |           |             |
| MS LINK NO. 14098     |                               |      |    |          |      |           |             |
| WINDING WAY           |                               |      |    |          |      |           |             |
| 32 FT WIDE (EG TO EG) |                               |      |    |          |      |           |             |
| MS LINK NO. 14098     |                               |      |    |          |      |           |             |
| WINDING WAY           |                               |      |    |          |      |           |             |
| 32 FT WIDE (EG TO EG) |                               |      |    |          |      |           |             |
| MS LINK NO. 14098     |                               |      |    |          |      |           |             |
| WINDING WAY           |                               |      |    |          |      |           |             |
| 32 FT WIDE (EG TO EG) |                               |      |    |          |      |           |             |
| MS LINK NO. 14098     |                               |      |    |          |      |           |             |
| WINDING WAY           |                               |      |    |          |      |           |             |
| 32 FT WIDE (EG TO EG) |                               |      |    |          |      |           |             |
| MS LINK NO. 14098     |                               |      |    |          |      |           |             |
| WINDING WAY           |                               |      |    |          |      |           |             |
| 32 FT WIDE (EG TO EG) |                               |      |    |          |      |           |             |
| MS LINK NO. 14098     |                               |      |    |          |      |           |             |
| WINDING WAY           |                               |      |    |          |      |           |             |
| 32 FT WIDE (EG TO EG) |                               |      |    |          |      |           |             |
| MS LINK NO. 14098     |                               |      |    |          |      |           |             |
| WINDING WAY           |                               |      |    |          |      |           |             |
| 32 FT WIDE (EG TO EG) |                               |      |    |          |      |           |             |
| MS LINK NO. 14098     |                               |      |    |          |      |           |             |
| WINDING WAY           |                               |      |    |          |      |           |             |
| 32 FT WIDE (EG TO EG) |                               |      |    |          |      |           |             |
| MS LINK NO. 14098     |                               |      |    |          |      |           |             |
| WINDING WAY           |                               |      |    |          |      |           |             |
| 32 FT WIDE (EG TO EG) |                               |      |    |          |      |           |             |
| MS LINK NO. 14098     |                               |      |    |          |      |           |             |
| WINDING WAY           |                               |      |    |          |      |           |             |
| 32 FT WIDE (EG TO EG) |                               |      |    |          |      |           |             |
| MS LINK NO. 14098     |                               |      |    |          |      |           |             |
| WINDING WAY           |                               |      |    |          |      |           |             |
| 32 FT WIDE (EG TO EG) |                               |      |    |          |      |           |             |
| MS LINK NO. 14098     |                               |      |    |          |      |           |             |
| WINDING WAY           |                               |      |    |          |      |           |             |
| 32 FT WIDE (EG TO EG) |                               |      |    |          |      |           |             |
| MS LINK NO. 14098     |                               |      |    |          |      |           |             |
| WINDING WAY           |                               |      |    |          |      |           |             |
| 32 FT WIDE (EG TO EG) |                               |      |    |          |      |           |             |
| MS LINK NO. 14098     |                               |      |    |          |      |           |             |
| WINDING WAY           |                               |      |    |          |      |           |             |
| 32 FT WIDE (EG TO EG) |                               |      |    |          |      |           |             |
| MS LINK NO. 14098     |                               |      |    |          |      |           |             |
| WINDING WAY           |                               |      |    |          |      |           |             |
| 32 FT WIDE (EG TO EG) |                               |      |    |          |      |           |             |
| MS LINK NO. 14098     |                               |      |    |          |      |           |             |
| WINDING WAY           |                               |      |    |          |      |           |             |
| 32 FT WIDE (EG TO EG) |                               |      |    |          |      |           |             |
| MS LINK NO. 14098     |                               |      |    |          |      |           |             |
| WINDING WAY           |                               |      |    |          |      |           |             |
| 32 FT WIDE (EG TO EG) |                               |      |    |          |      |           |             |
| MS LINK NO. 14098     |                               |      |    |          |      |           |             |
| WINDING WAY           |                               |      |    |          |      |           |             |
| 32 FT WIDE (EG TO EG) |                               |      |    |          |      |           |             |
| MS LINK NO. 14098     |                               |      |    |          |      |           |             |
| WINDING WAY           |                               |      |    |          |      |           |             |
| 32 FT WIDE (EG TO EG) |                               |      |    |          |      |           |             |
| MS LINK NO. 14098     |                               |      |    |          |      |           |             |
| WINDING WAY           |                               |      |    |          |      |           |             |
| 32 FT WIDE (EG TO EG) |                               |      |    |          |      |           |             |
| MS LINK NO. 14098     |                               |      |    |          |      |           |             |
| WINDING WAY           |                               |      |    |          |      |           |             |
| 32 FT WIDE (EG TO EG) |                               |      |    |          |      |           |             |
| MS LINK NO. 14098     |                               |      |    |          |      |           |             |
| WINDING WAY           |                               |      |    |          |      |           |             |
| 32 FT WIDE (EG TO EG) |                               |      |    |          |      |           |             |
| MS LINK NO. 14098     |                               |      |    |          |      |           |             |
| WINDING WAY           |                               |      |    |          |      |           |             |
| 32 FT WIDE (EG TO EG) |                               |      |    |          |      |           |             |
| MS LINK NO. 14098     |                               |      |    |          |      |           |             |
| WINDING WAY           |                               |      |    |          |      |           |             |
| 32 FT WIDE (EG TO EG) |                               |      |    |          |      |           |             |
| MS LINK NO. 14098     |                               |      |    |          |      |           |             |
| WINDING WAY           |                               |      |    |          |      |           |             |
| 32 FT WIDE (EG TO EG) |                               |      |    |          |      |           |             |
| MS LINK NO. 14098     |                               |      |    |          |      |           |             |
| WINDING WAY           |                               |      |    |          |      |           |             |
| 32 FT WIDE (EG TO EG) |                               |      |    |          |      |           |             |
| MS LINK NO. 14098     |                               |      |    |          |      |           |             |
| WINDING WAY           |                               |      |    |          |      |           |             |
| 32 FT WIDE (EG TO EG) |                               |      |    |          |      |           |             |
| MS LINK NO. 14098     |                               |      |    |          |      |           |             |
| WINDING WAY           |                               |      |    |          |      |           |             |
| 32 FT WIDE (EG TO EG) |                               |      |    |          |      |           |             |
| MS LINK NO. 14098     |                               |      |    |          |      |           |             |
| WINDING WAY           |                               |      |    |          |      |           |             |
| 32 FT WIDE (EG TO EG) |                               |      |    |          |      |           |             |
| MS LINK NO. 14098     |                               |      |    |          |      |           |             |
| WINDING WAY           |                               |      |    |          |      |           |             |
| 32 FT WIDE (EG TO EG) |                               |      |    |          |      |           |             |
| MS LINK NO. 14098     |                               |      |    |          |      |           |             |
| WINDING WAY           |                               |      |    |          |      |           |             |
| 32 FT WIDE (EG TO EG) |                               |      |    |          |      |           |             |
| MS LINK NO. 14098     |                               |      |    |          |      |           |             |
| WINDING WAY           |                               |      |    |          |      |           |             |
| 32 FT WIDE (EG TO EG) |                               |      |    |          |      |           |             |
| MS LINK NO. 14098     |                               |      |    |          |      |           |             |
| WINDING WAY           |                               |      |    |          |      |           |             |
| 32 FT WIDE (EG TO EG) |                               |      |    |          |      |           |             |
| MS LINK NO. 14098     |                               |      |    |          |      |           |             |
| WINDING WAY           |                               |      |    |          |      |           |             |
| 32 FT WIDE (EG TO EG) |                               |      |    |          |      |           |             |
| MS LINK NO. 14098     |                               |      |    |          |      |           |             |
| WINDING WAY           |                               |      |    |          |      |           |             |
| 32 FT WIDE (EG TO EG) |                               |      |    |          |      |           |             |
| MS LINK NO. 14098     |                               |      |    |          |      |           |             |
| WINDING WAY           |                               |      |    |          |      |           |             |
| 32 FT WIDE (EG TO EG) |                               |      |    |          |      |           |             |
| MS LINK NO. 14098     |                               |      |    |          |      |           |             |
| WINDING WAY           |                               |      |    |          |      |           |             |
| 32 FT WIDE (EG TO EG) |                               |      |    |          |      |           |             |
| MS LINK NO. 14098     |                               |      |    |          |      |           |             |
| WIND                  |                               |      |    |          |      |           |             |



# PROJECT LOCATION

