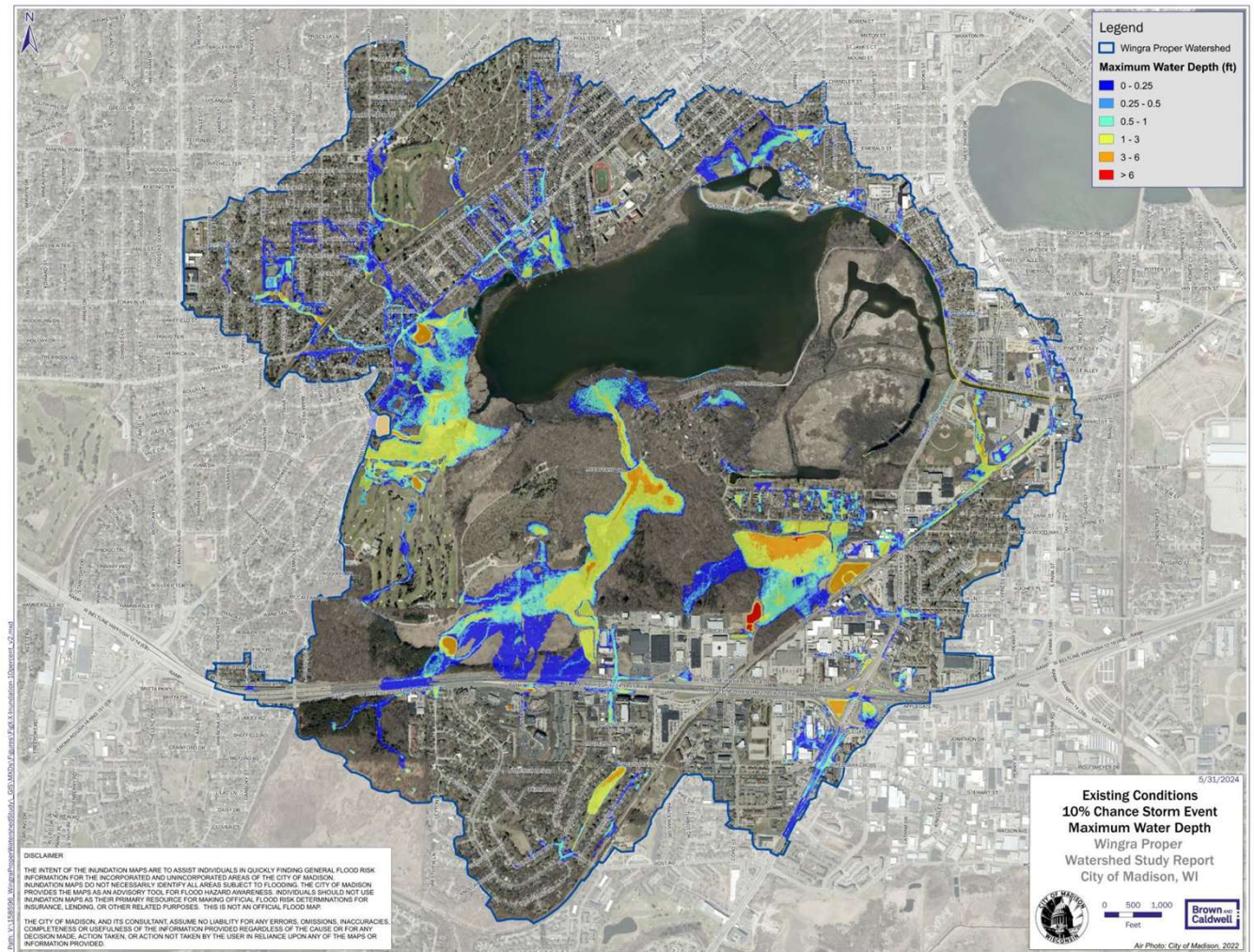


# Informational Presentation from City Engineering Regarding Potential Impact of Wingra Proper Watershed Study Proposed Solutions on Parks Owned Land



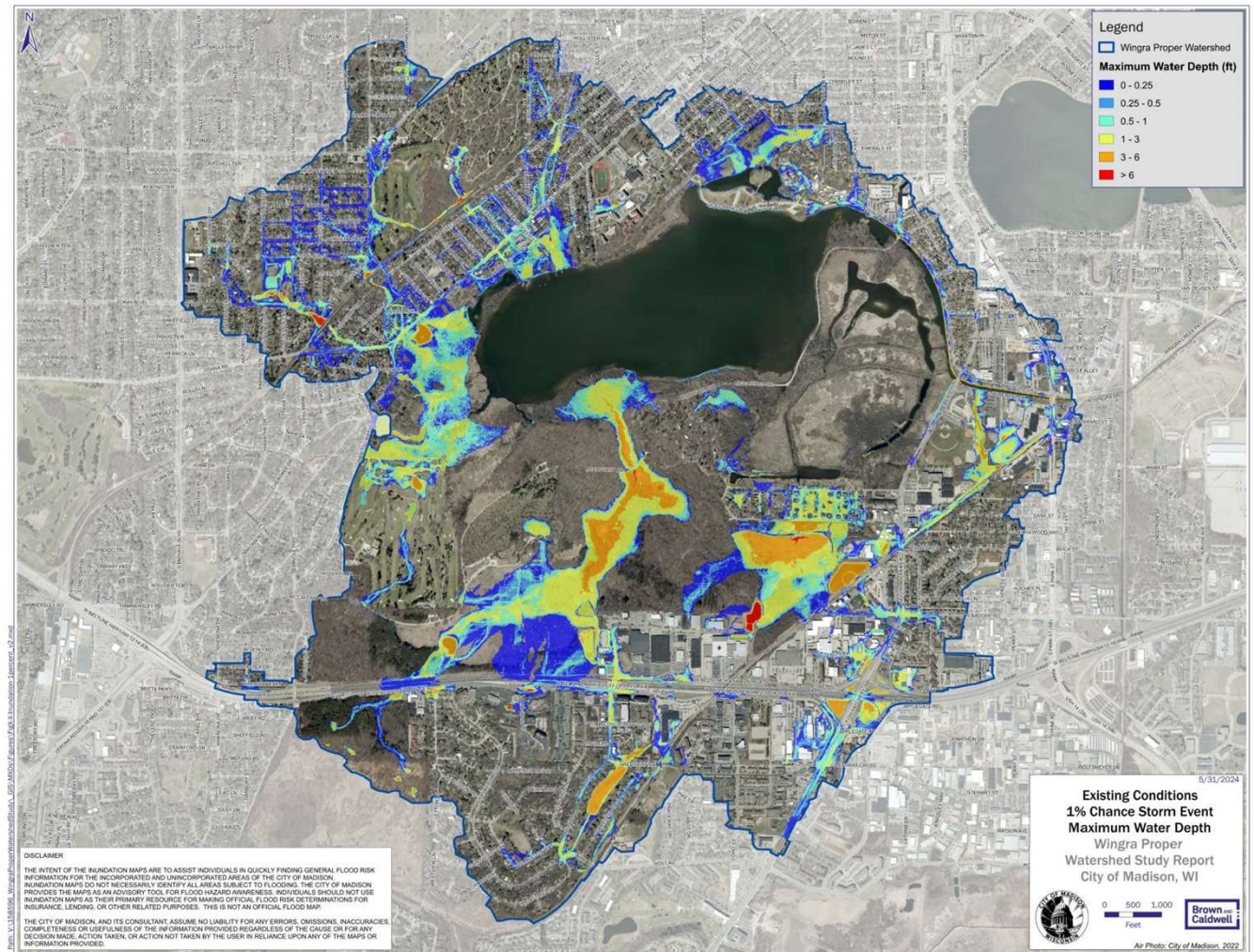
BPC  
March 12, 2025

# Existing Conditions – 10% Chance Storm Event





# Existing Conditions – 1% Chance Storm Event

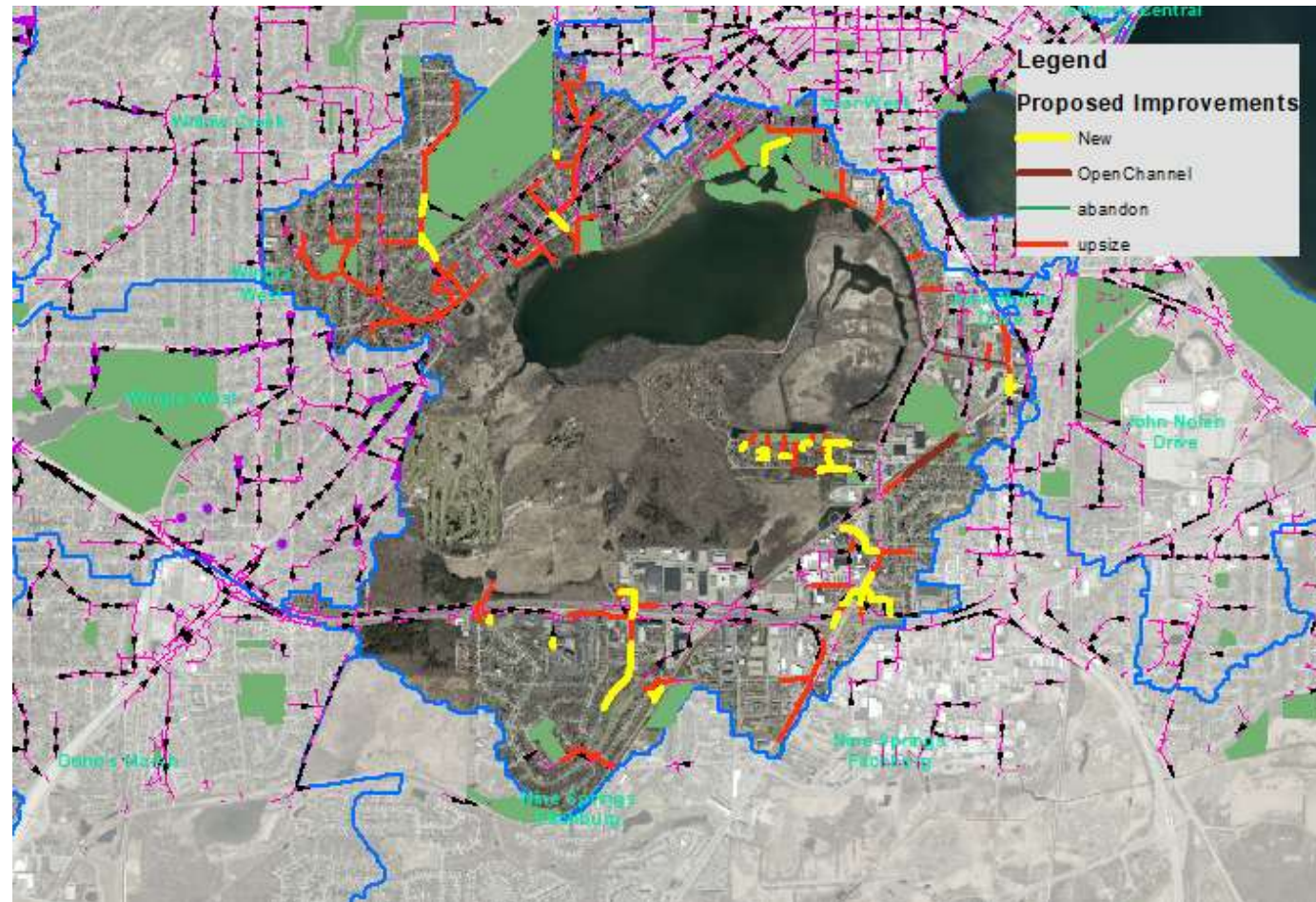




# Wingra Proper Parks Impacted by Improvements

## Parks Impacted

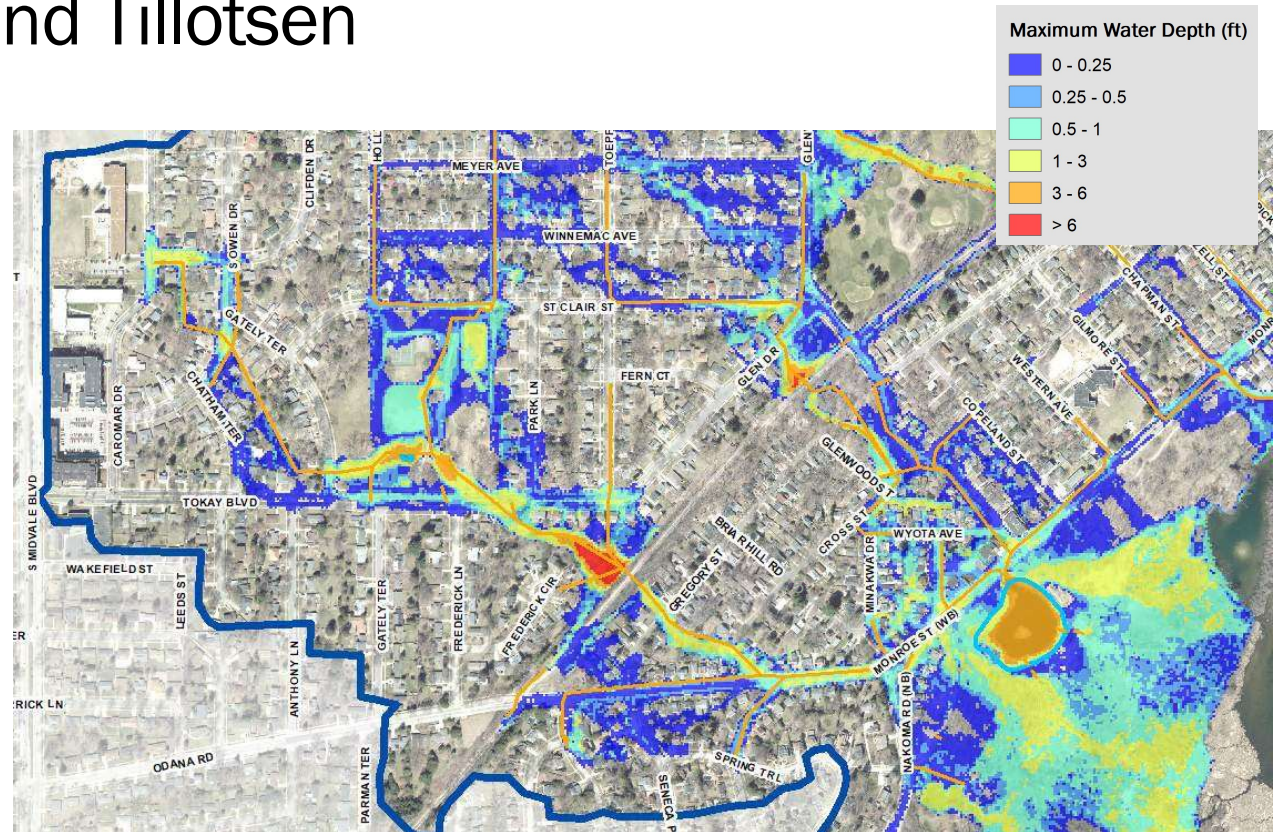
- Westmorland ( major)
- Tillotson ( major)
- Speedway ( minor)
- Wingra (major)
- Vilas (Alternative dependent)
- Harvey Schmidt (major)



# Westmorland and Tillotsen

- Existing Conditions
- 1% Chance Storm

Brown and Caldwell





# Westmorland and Tillotsen



– Existing Pipes

Brown and Caldwell



– Upsized Pipes



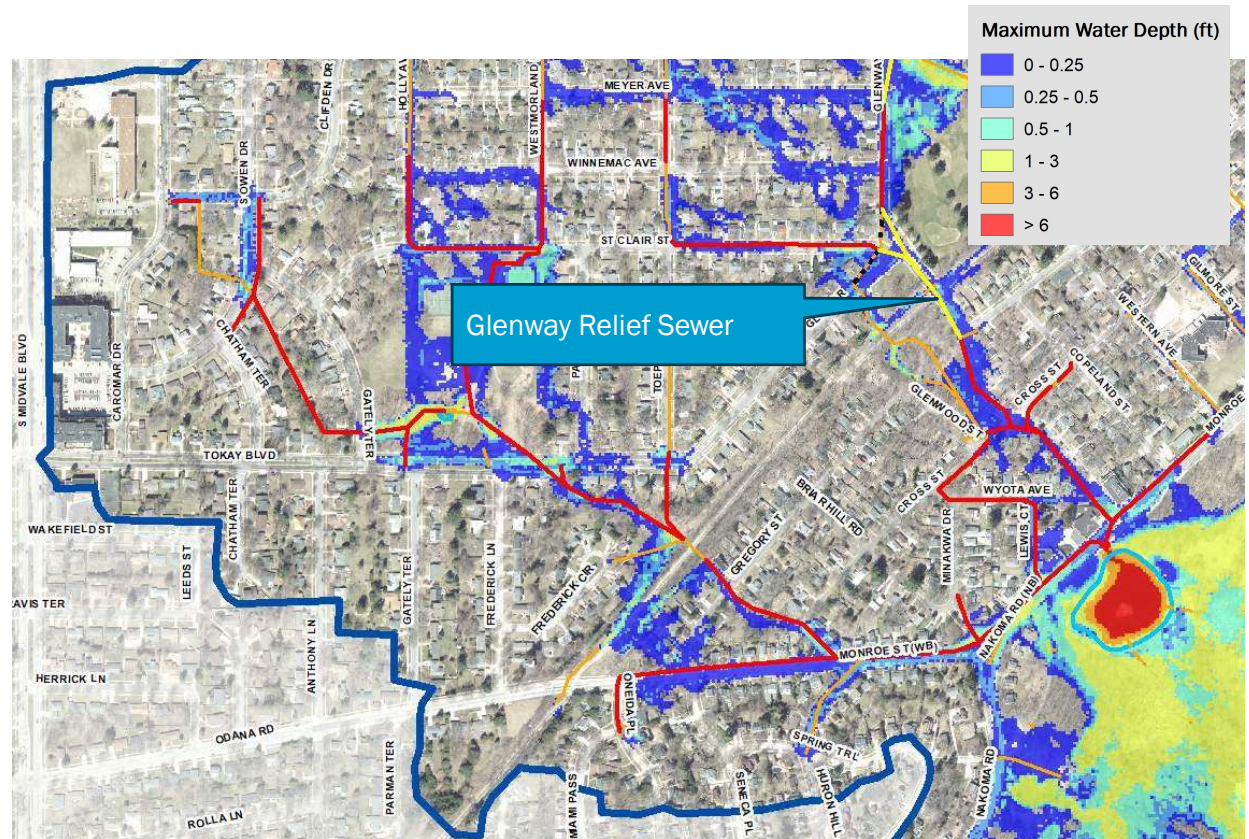
# Monroe Street Area

- With Improvements
- 1% Chance Storm

Brown and Caldwell

## Legend

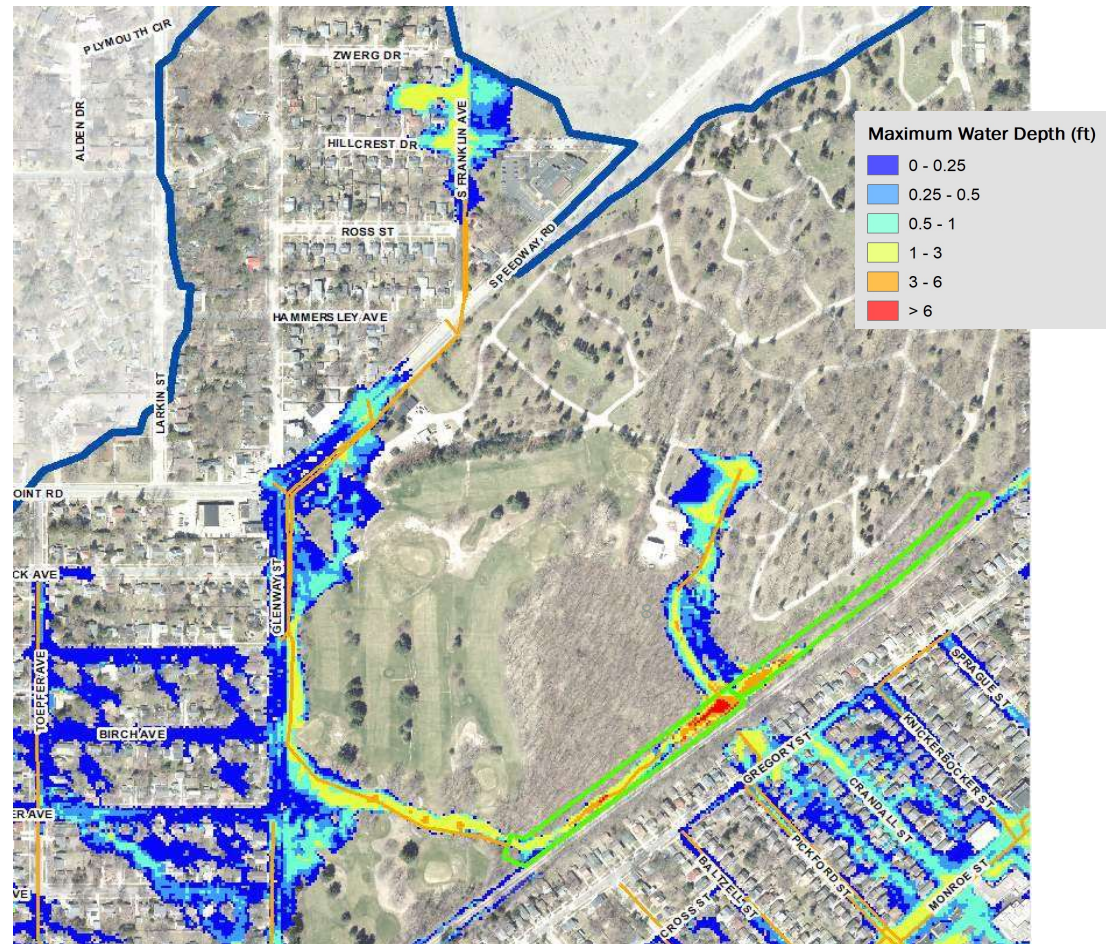
- Storm Sewer Improvements
- New Storm Sewer
- Open Channel Improvements
- ..... Abandon Ex. Storm Sewer
- Ex. Storm Sewer



# Speedway Road Area The Glen Golf Course

- Existing Conditions
- 1% Chance Storm

Brown and Caldwell



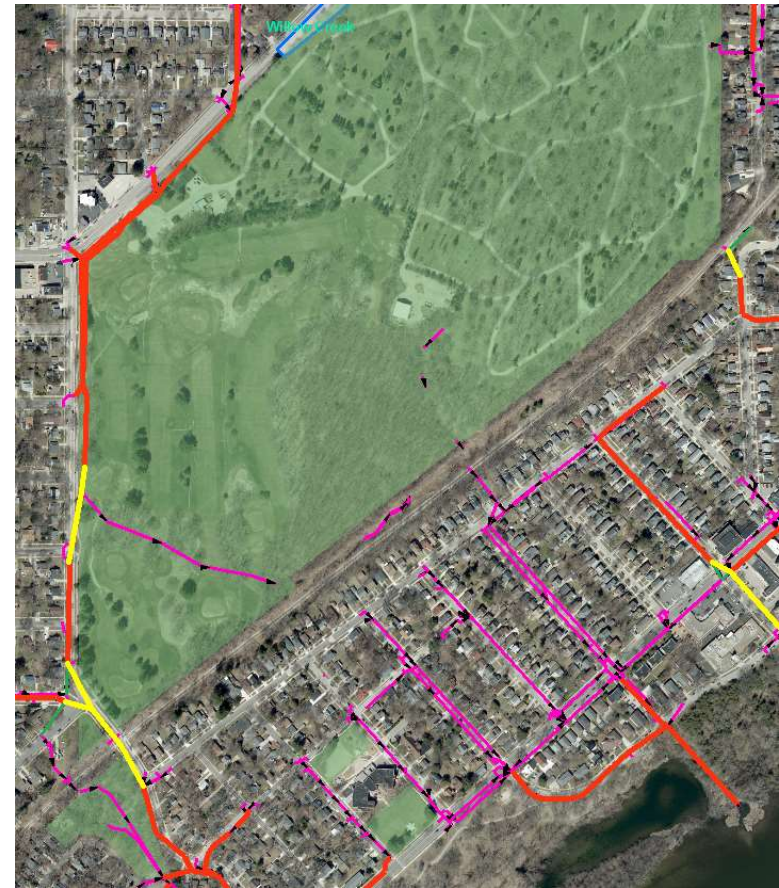


## Speedway Road Area The Glen Golf Course



– Existing Pipes

Brown and Caldwell



– Upsized Pipes



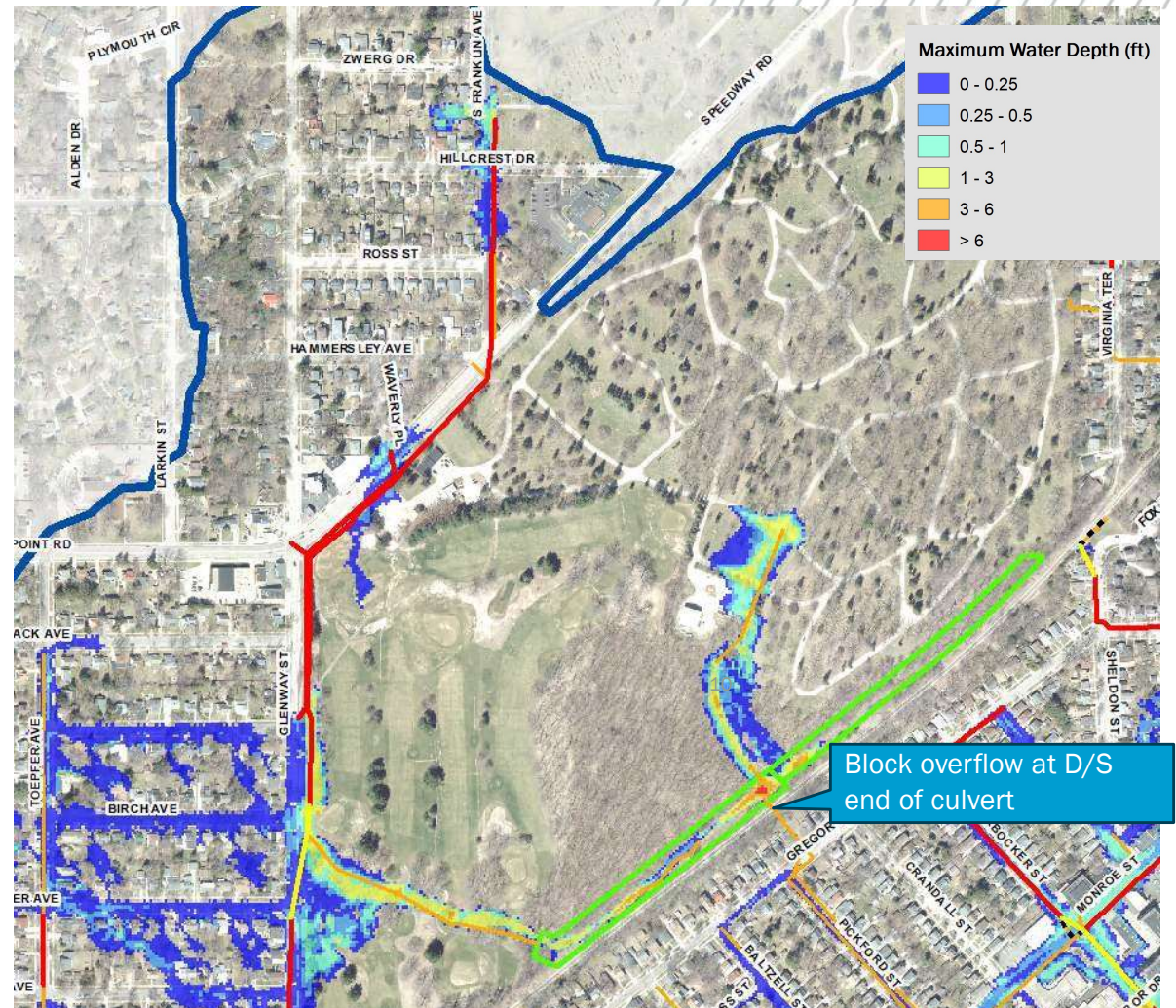
# Speedway Road Area The Glen Golf Course

- With Improvements
- 1% Chance Storm

Brown and Caldwell

## Legend

- Storm Sewer Improvements
- New Storm Sewer
- Open Channel Improvements
- ..... Abandon Ex. Storm Sewer
- Ex. Storm Sewer

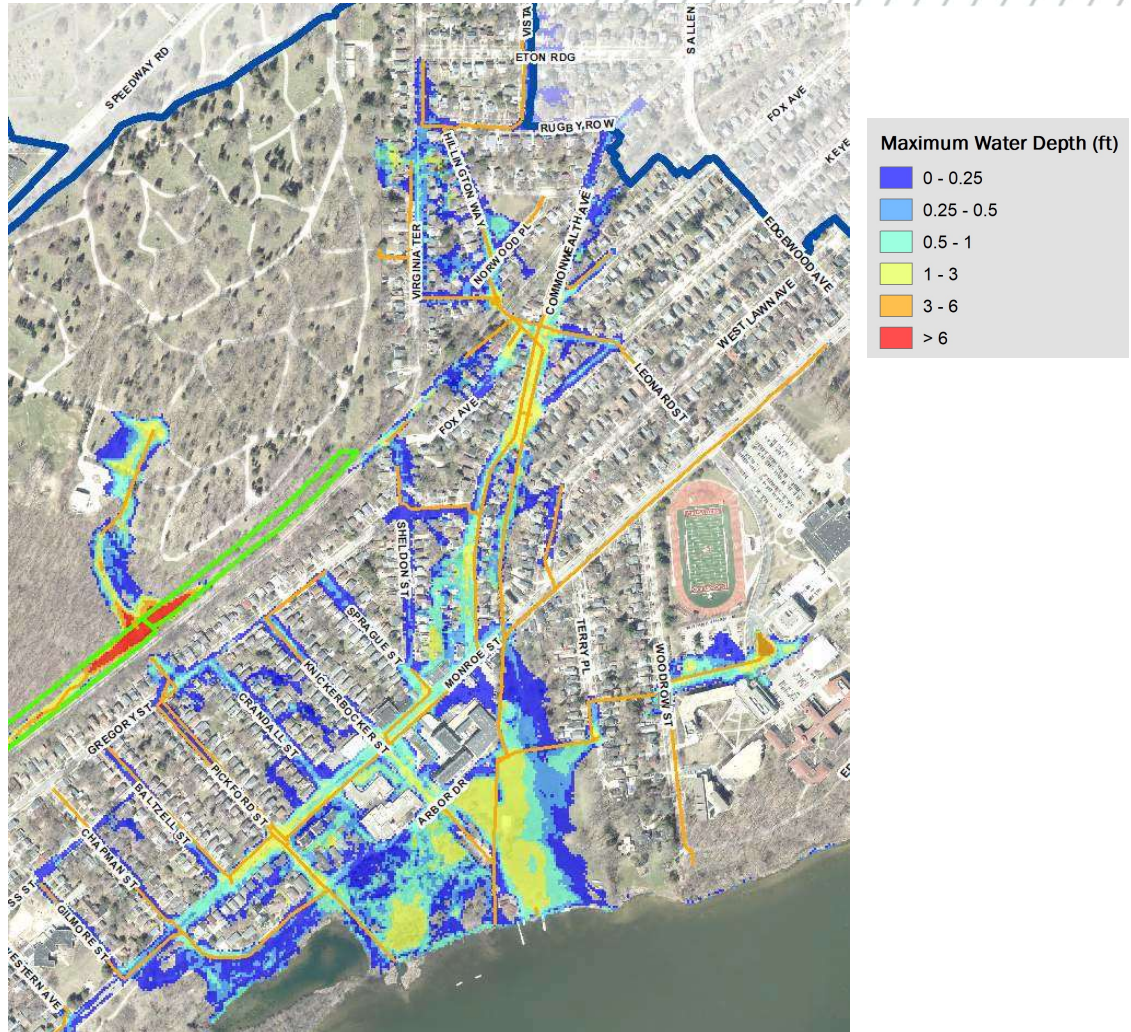




# Monroe Street / Wingra Park Area

- Existing Conditions
- 1% Chance Storm

Brown and Caldwell







– Existing Pipes

Brown and Caldwell



– Upsized Pipes



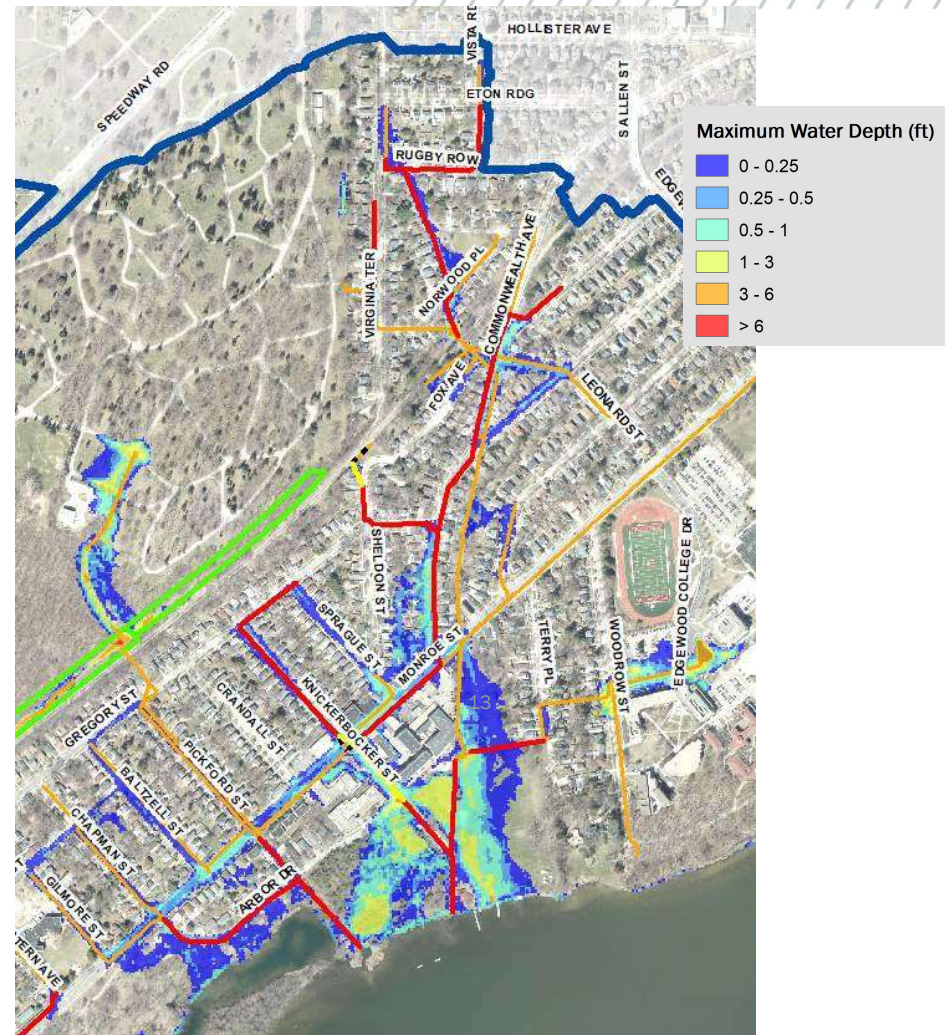
# Monroe Street / Wingra Park Area

- With Improvements
- 1% Chance Storm

Brown and Caldwell

## Legend

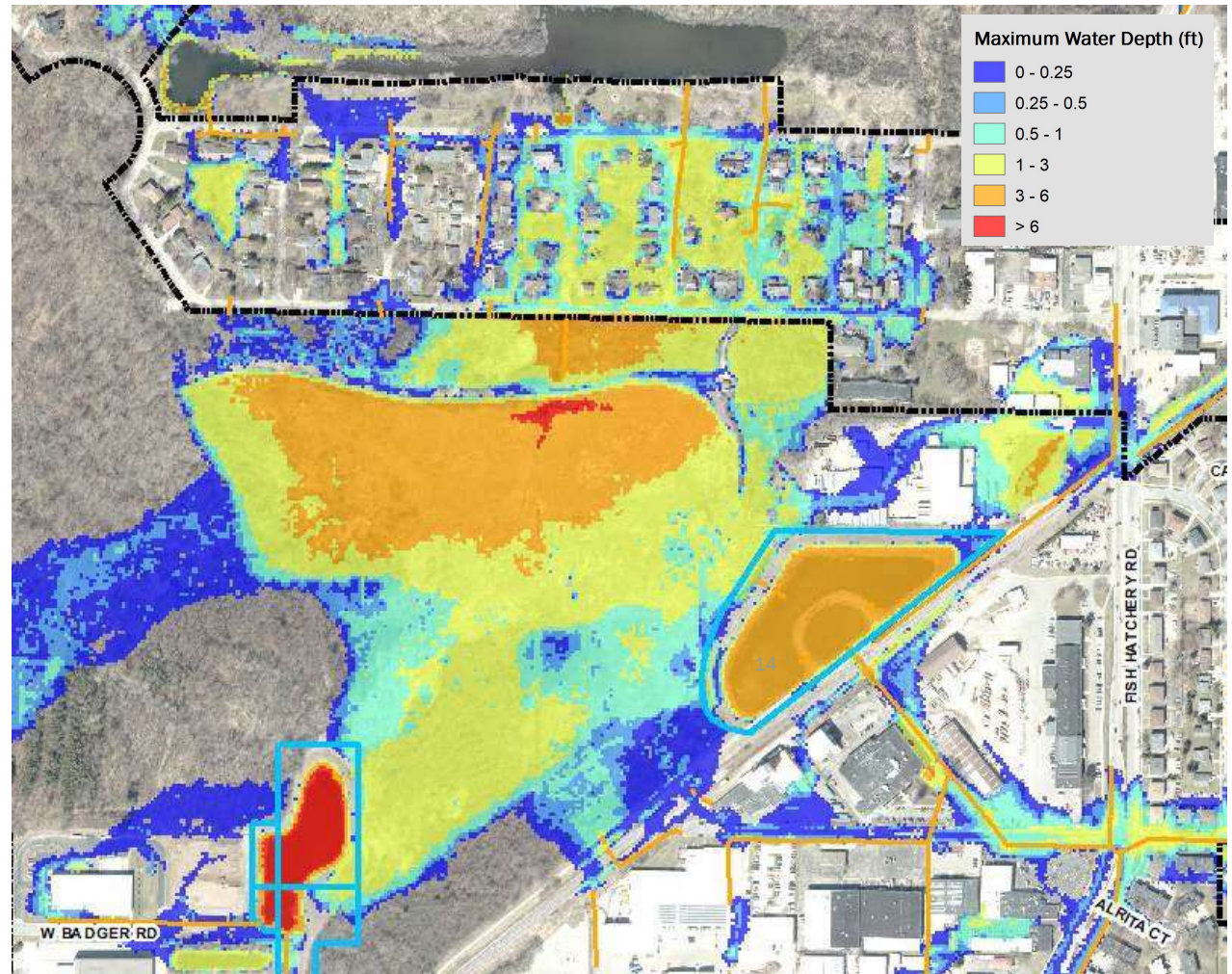
- Storm Sewer Improvements
- New Storm Sewer
- Open Channel Improvements
- ..... Abandon Ex. Storm Sewer
- Ex. Storm Sewer



# Lake Forest Area

- Existing Conditions
- 1% Chance Storm

Brown and Caldwell





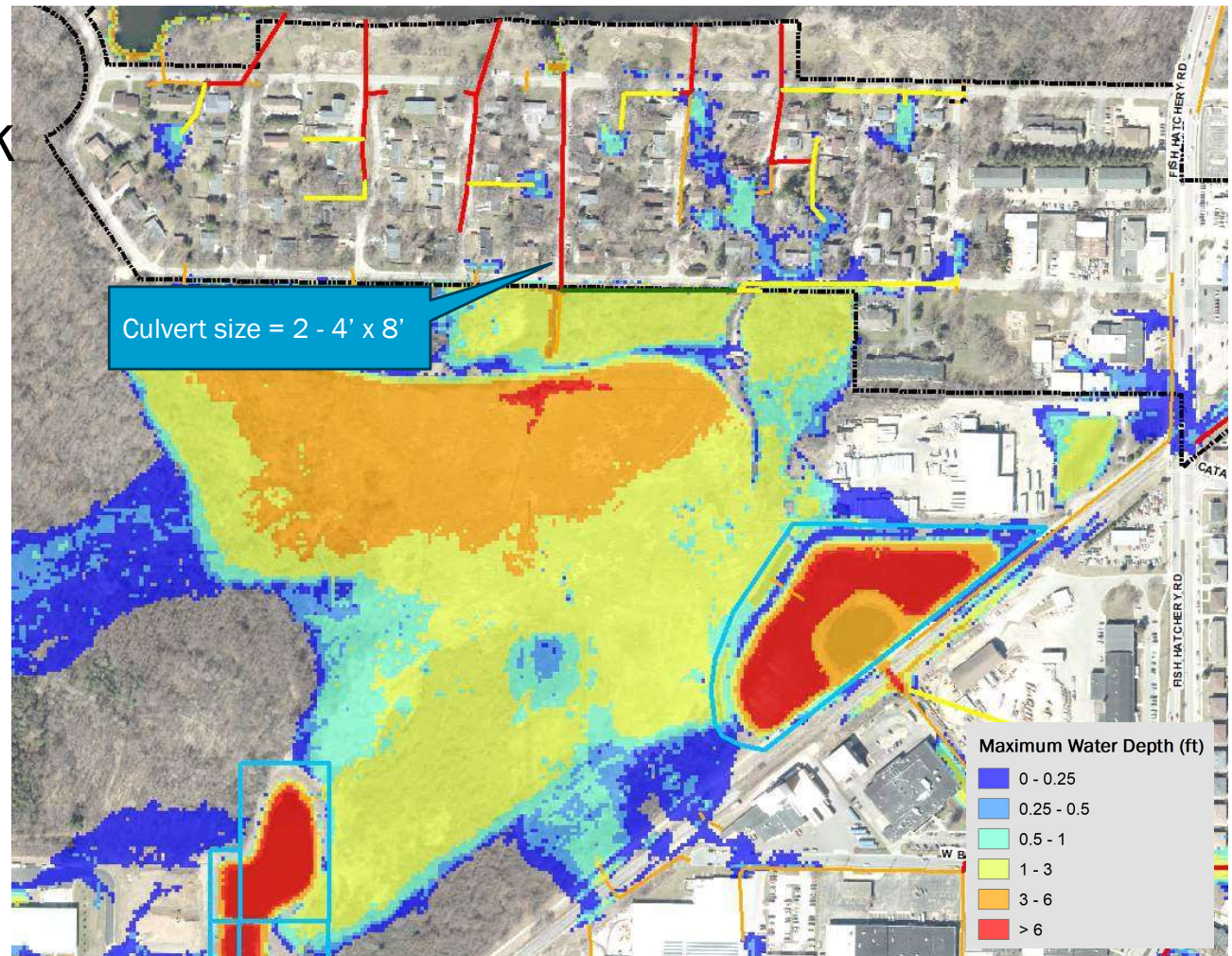
# Lake Forest Area Harvey Schmidt Park

- With Lake Forest Culvert
- 1% Chance Storm

Brown and Caldwell

## Legend

- Storm Sewer Improvements
- New Storm Sewer
- Open Channel Improvements
- ..... Abandon Ex. Storm Sewer
- Ex. Storm Sewer

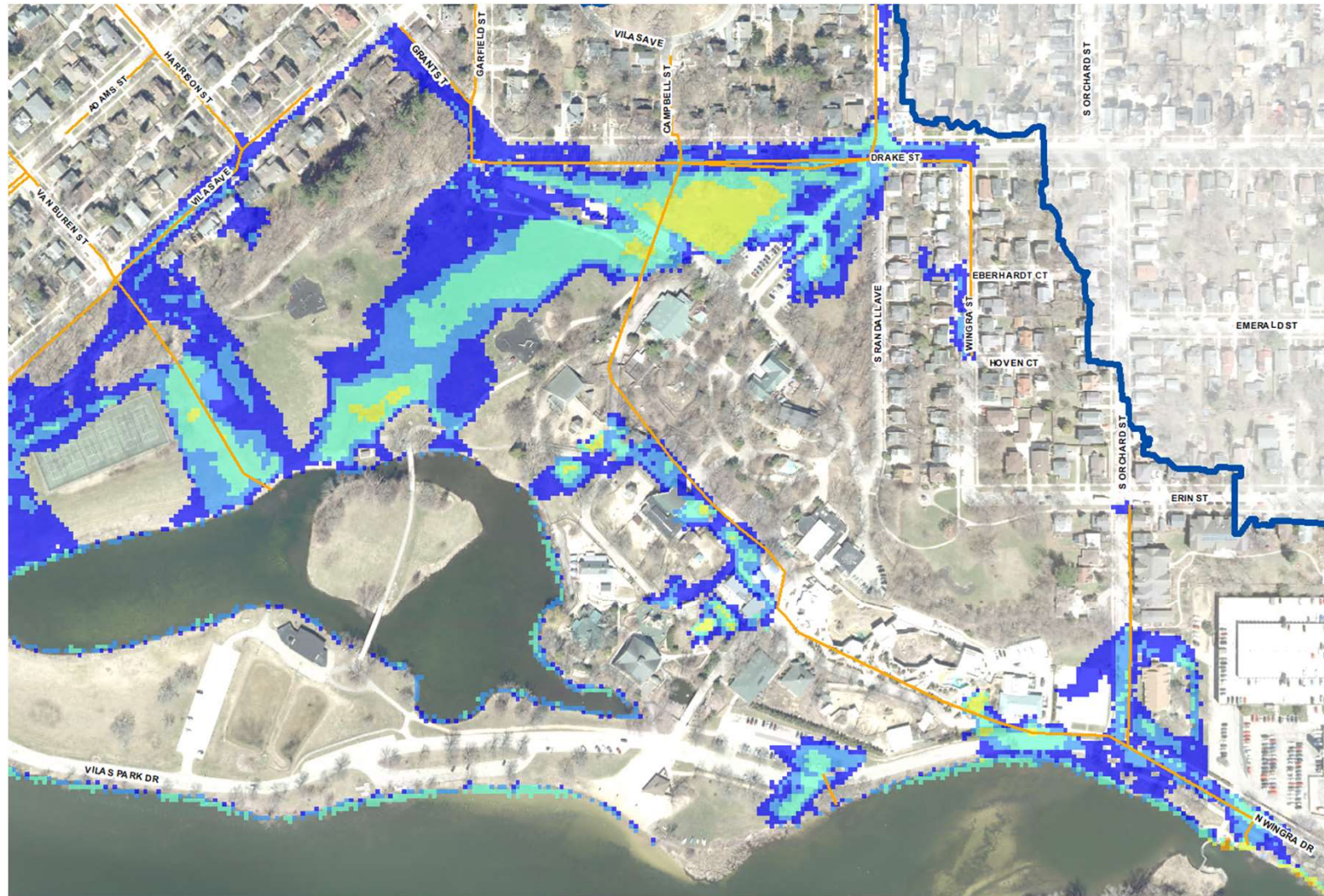




# Vilas Park

## Existing Conditions

- 10% Chance Storm Event

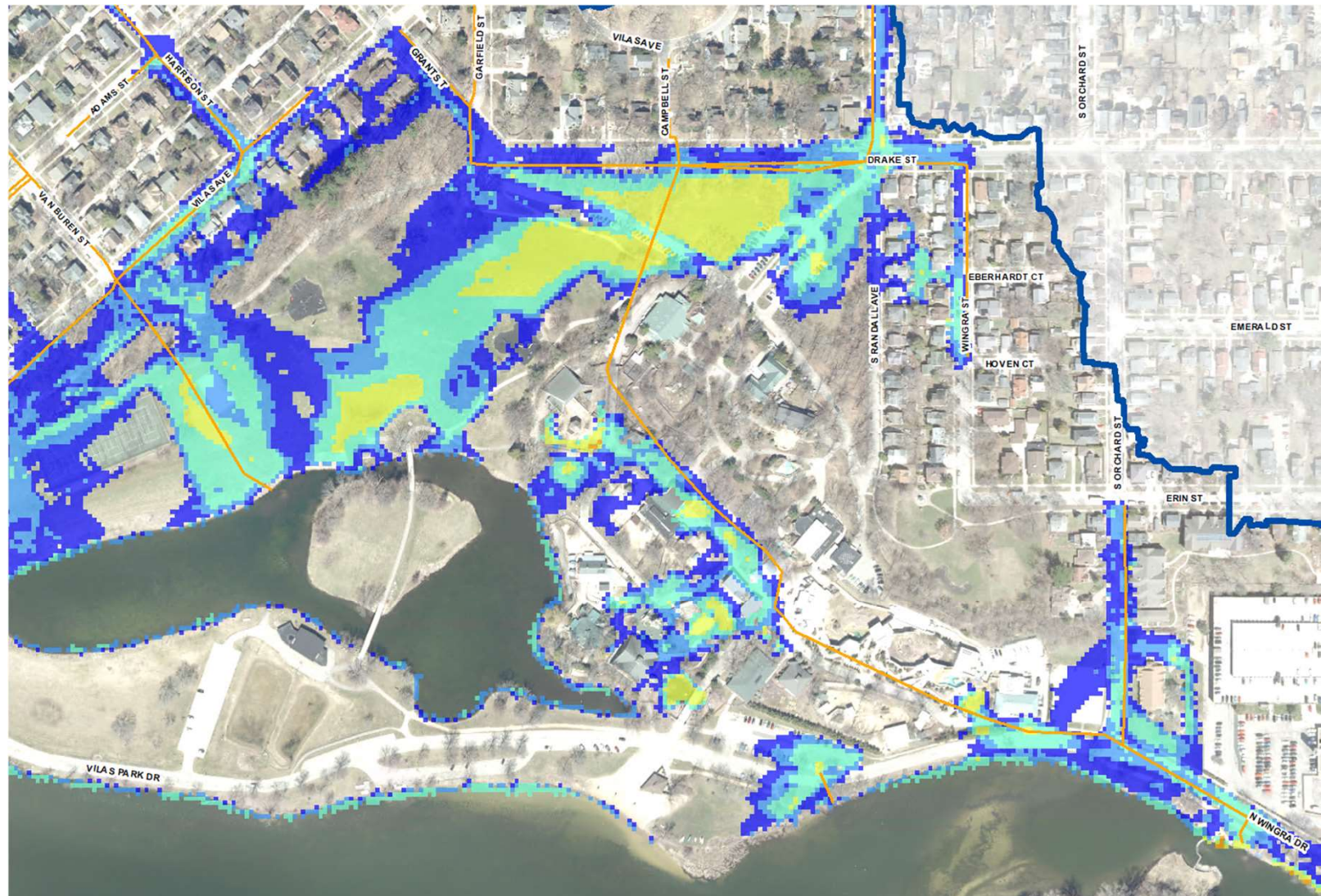




# Vilas Park

## Existing Conditions

- 1% Chance Storm Event







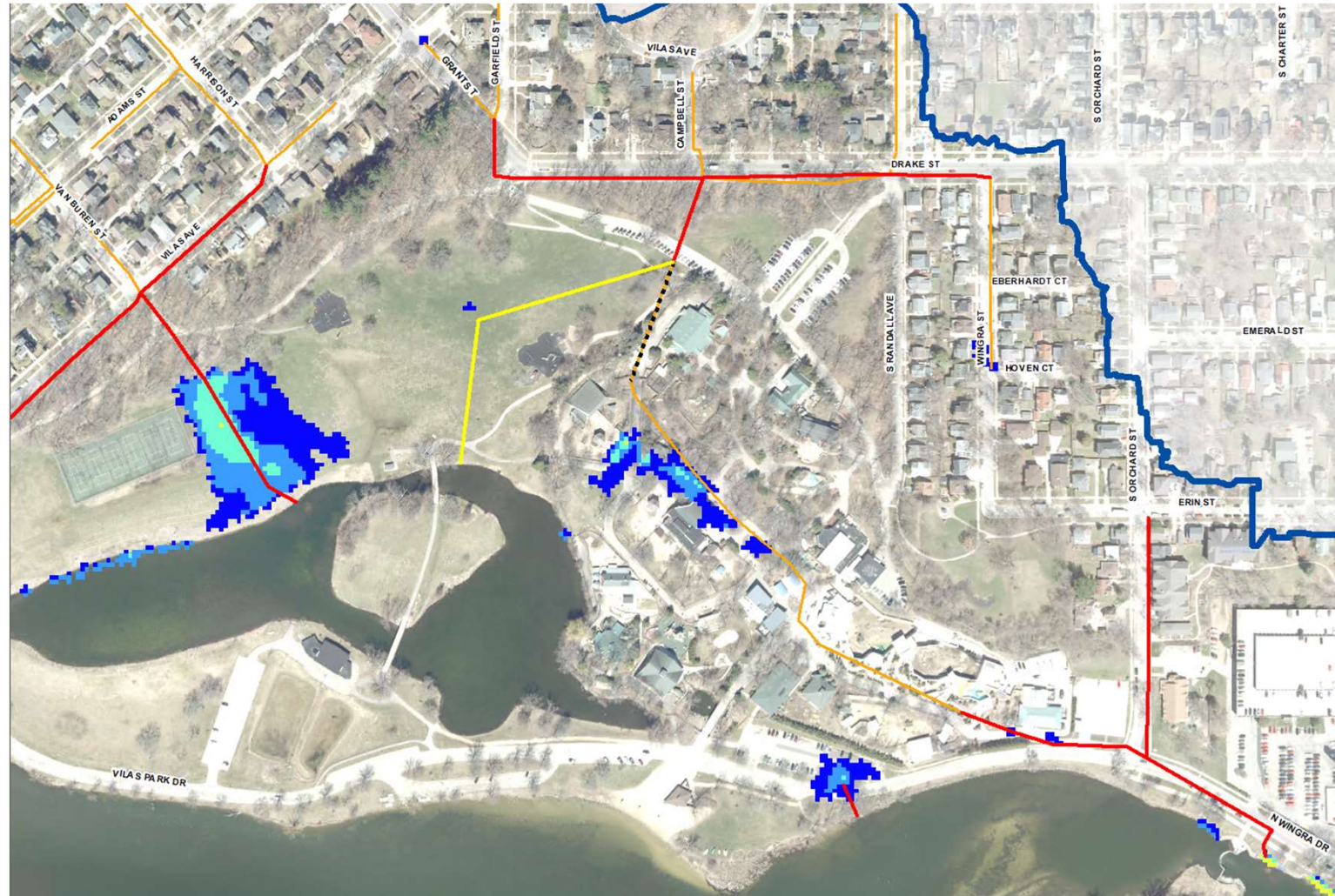
# Proposed Alternatives

- 1. Relief sewer
- 2. Drake Street Improvements
- 3. Drake and Vilas Ave  
Improvements



# Relief Sewer Alternative 1

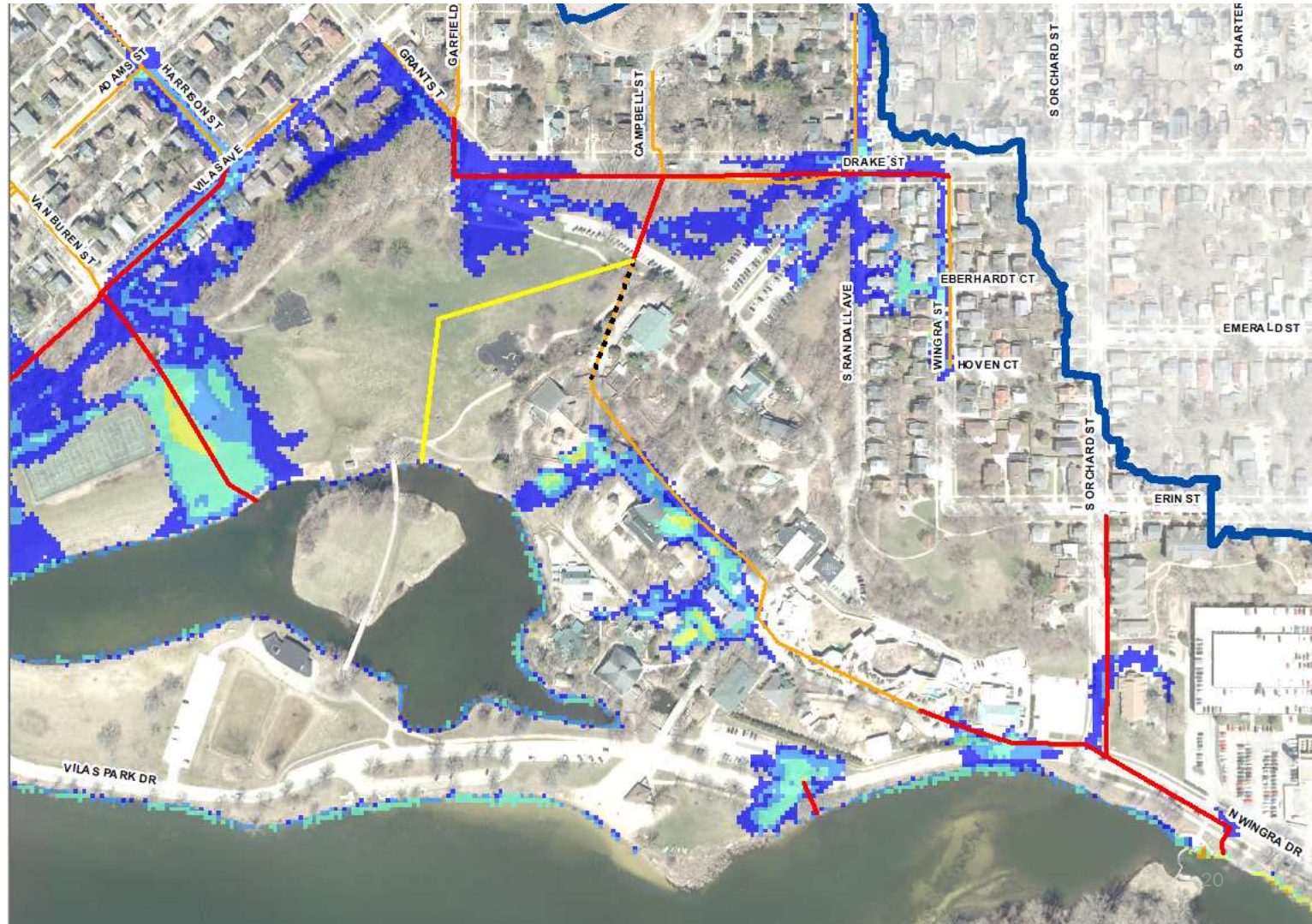
– 10% Chance  
Storm Event





# Relief Sewer Alternative

– 1% Chance  
Storm Event





# Topographic Challenges

- Because of topography it would be hard to re-route storm sewer

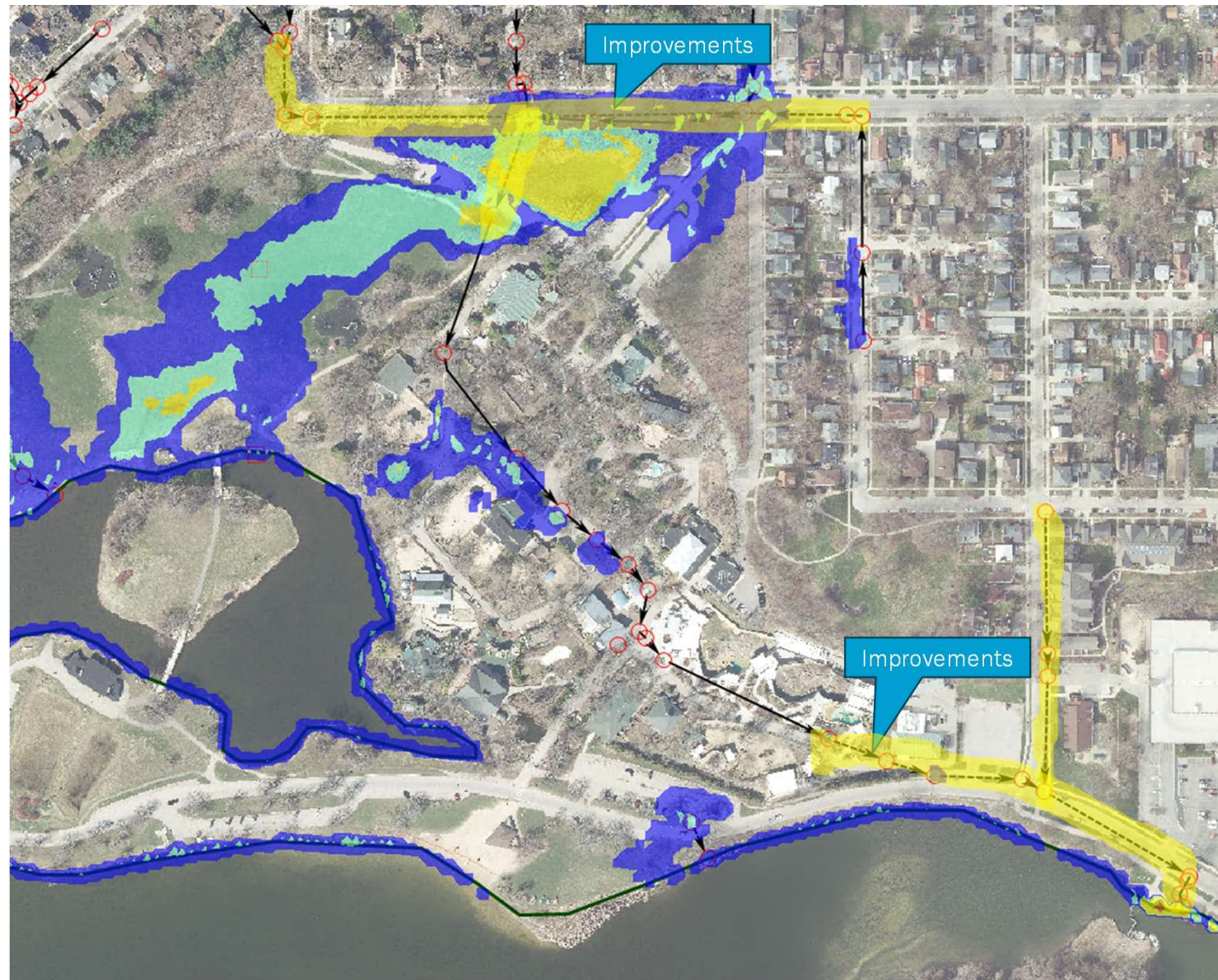




# Drake Upsize No Relief Pipe Alternative 2

- 10% Chance Storm Event
- This scenario looks at some upgrades at the upstream/downstream end of the run
- Some flooding remains
- additional improvements through the zoo could be added

Brown and Caldwell

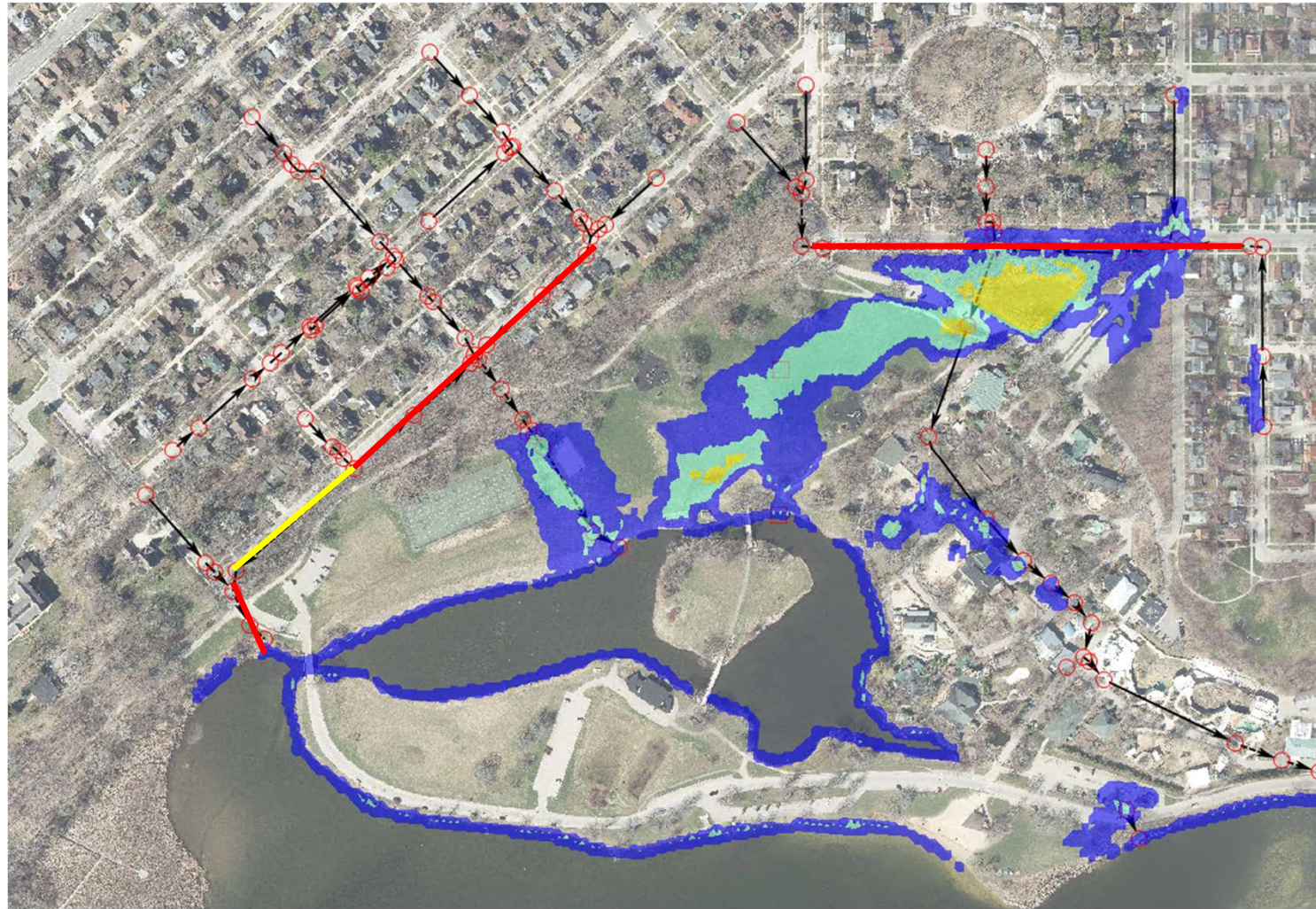




# Vilas Ave Bypass Alt 3

- 10% Chance Storm Event
- This scenario looks at some upgrades at the upstream/downstream end of the run
- Includes diverting the Vilas Ave storm sewer from Van Buren west to Edgewood Ave

Brown and Caldwell





# Vilas Ave Bypass Alt 3

- 1% Chance Storm Event
- This scenario looks at some upgrades at the upstream/downstream end of the run
- Includes diverting the Vilas Ave storm sewer from Van Buren west to Edgewood Ave

Brown and Caldwell

