



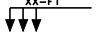


NOTES

1. ELEVATIONS ARE AT 25-FOOT INTERVALS.
2. RADIUS DIMENSIONS ARE TO THE FACE OF CURB.
3. ALL MEDIAN NOSES ARE CONCRETE MEDIAN SLOPED NOSE TYPE 1 UNLESS OTHERWISE NOTED.
4. SIDEWALK REPLACEMENT AREAS ARE APPROXIMATE. ADJUST LIMITS IN THE FIELD TO THE NEAREST SIDEWALK JOINT LINE AS DIRECTED BY THE ENGINEER.

LEGEND

	CONCRETE DRIVEWAY 7-INCH
	ASPHALTIC SURFACE DRIVEWAYS AND FIELD ENTRANCES
	STAMPING COLORED CONCRETE
 X-XX	CONCRETE CURB & GUTTER XX-INCH TYPE X
●	MANHOLE COVER
■	INLET COVER
⋈	WATER VALVE
~>	DRAINAGE DIRECTION
*	SAWCUT REQUIRED
⌘	STREET LIGHT POLE
⊙ →	TRAFFIC SIGNAL POLE
⊠	STREET LIGHTING & TRAFFIC SIGNAL CONTROL CABINET
 XX-FT	TRAFFIC SIGNAL TROMBONE ARMS ALUMINUM

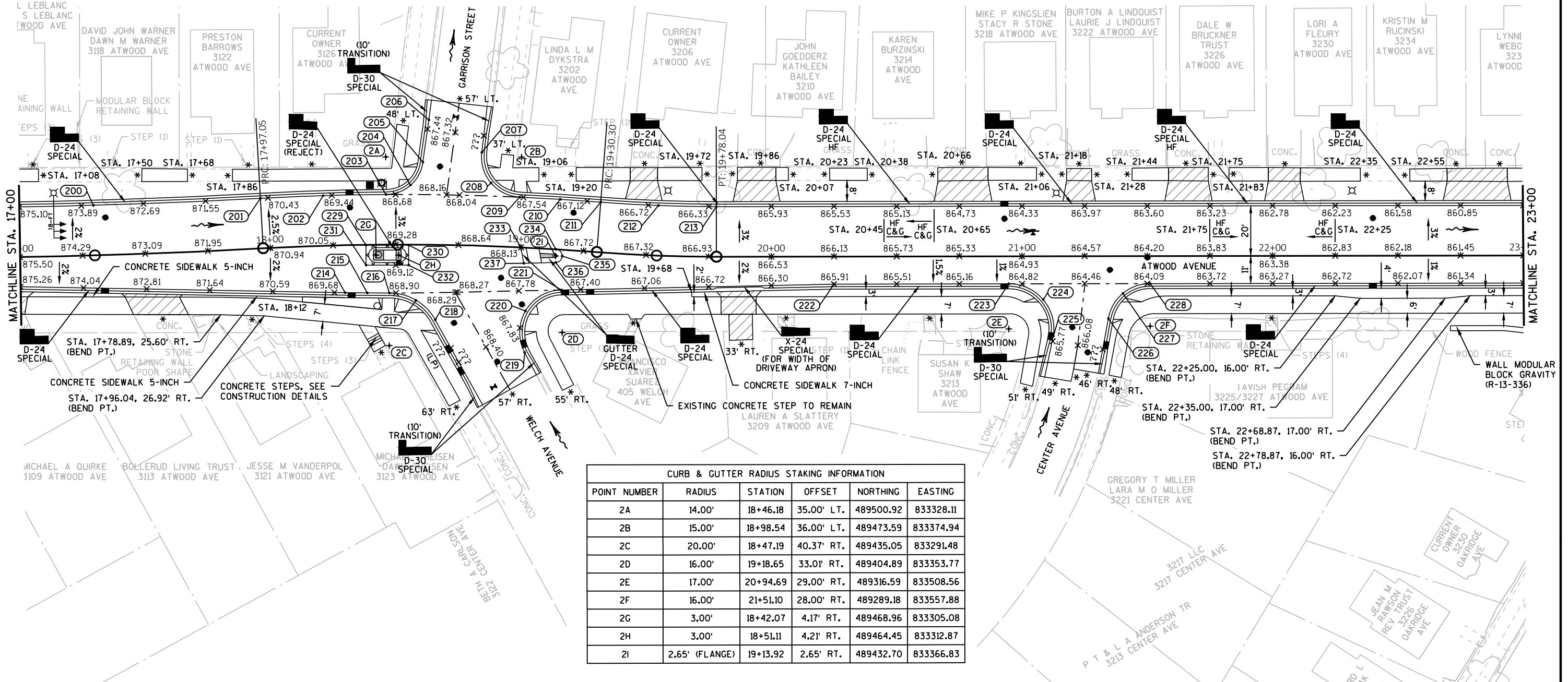




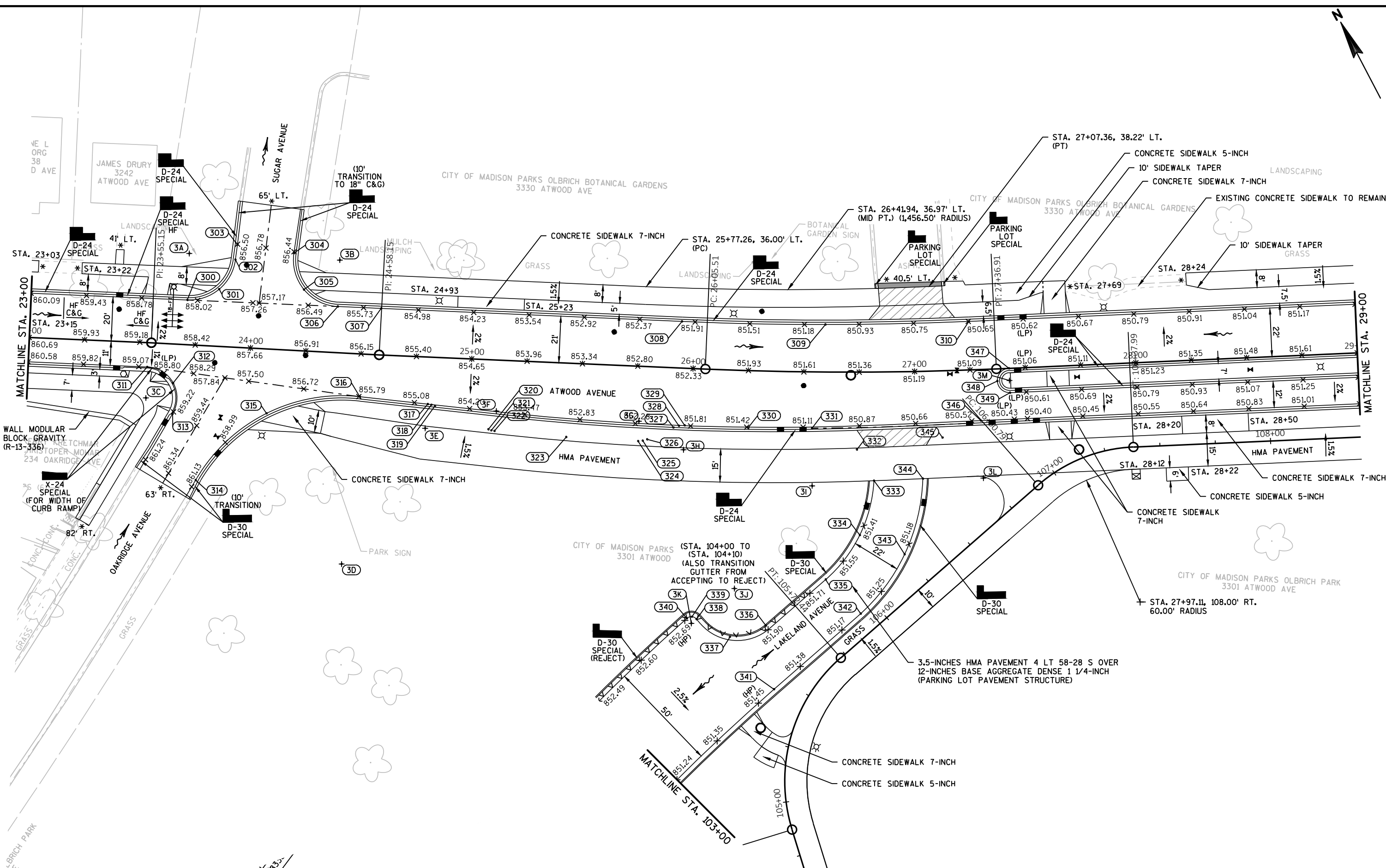
CURB & GUTTER STAKING INFORMATION						
POINT NUMBER	DESCRIPTION	STATION	OFFSET	ELEVATION	NORTHING	EASTING
200	MID PT.	17+29.83	20.00' LT.	873.66	489542.82	833217.59
201	PT/PC	17+97.05	20.00' LT.	870.56	489511.75	833276.58
202	MID PT.	18+21.61	20.00' LT.	869.57	489500.10	833298.76
203	PT/PC	18+46.18	20.00' LT.	868.83	489487.91	833320.65
204	MID PT.	18+55.75	23.69' LT.	868.46	489486.19	833330.97
205	PT	18+60.54	32.92' LT.	868.10	489491.64	833339.90
206	BEND PT.	18+62.68	49.81' LT.	867.25	489505.03	833350.44
207	PC	18+83.15	37.28' LT.	867.20	489483.22	833362.16
208	MID PT.	18+87.11	25.17' LT.	867.49	489470.79	833359.19
209	PT/PC	18+98.54	20.00' LT.	867.56	489460.15	833366.27
210	MID PT.	19+14.42	20.00' LT.	867.29	489451.26	833379.81
211	PT/PC	19+30.30	20.00' LT.	867.03	489442.16	833393.22
212	MID PT.	19+54.17	20.00' LT.	866.66	489429.42	833412.45

CURB & GUTTER STAKING INFORMATION						
POINT NUMBER	DESCRIPTION	STATION	OFFSET	ELEVATION	NORTHING	EASTING
213	PT	19+78.04	20.00' LT.	866.28	489417.46	833432.19
214	PC	18+29.35	18.95' RT.	869.54	489462.20	833286.89
215	MID PT.	18+38.33	19.24' RT.	869.24	489457.66	833294.45
216	PT/PC	18+47.32	19.37' RT.	868.99	489453.20	833302.04
217	MID PT.	18+58.15	22.25' RT.	868.84	489445.37	833309.77
218	PT	18+66.14	30.03' RT.	868.71	489434.71	833312.47
219	PC	19+03.56	41.86' RT.	867.93	489405.54	833336.78
220	MID PT.	19+03.05	25.29' RT.	867.74	489419.70	833345.41
221	PT	19+17.13	16.08' RT.	867.51	489419.77	833361.99
222	BEND PT.	20+24.93	11.00' RT.	865.91	489367.13	833457.22
223	PC	20+94.69	11.00' RT.	864.86	489332.17	833517.59
224	MID PT.	21+08.44	17.38' RT.	865.09	489319.76	833526.28
225	PT	21+12.44	31.99' RT.	865.61	489305.10	833522.42

CURB & GUTTER STAKING INFORMATION						
POINT NUMBER	DESCRIPTION	STATION	OFFSET	ELEVATION	NORTHING	EASTING
226	PC	21+34.39	24.92' RT.	864.92	489300.23	833544.96
227	MID PT.	21+40.23	14.94' RT.	864.57	489305.94	833555.02
228	PT	21+51.10	11.00' RT.	864.08	489303.89	833566.40
229	BEGIN C&G	18+38.11	0.13' RT.	869.63	489474.42	833303.62
230	END C&G	18+55.11	0.20' RT.	869.14	489465.90	833318.33
231	BEGIN C&G	18+38.00	8.13' RT.	869.47	489467.50	833299.61
232	END C&G	18+55.14	8.20' RT.	868.98	489458.98	833314.32
233	BEGIN C&G	19+00.00	0.00' .	868.13	489442.55	833356.66
234	PC	19+13.92	0.00' .	867.90	489434.90	833368.30
235	MID PT.	19+16.58	2.54' RT.	867.81	489431.32	833369.09
236	PT	19+14.15	5.29' RT.	867.79	489430.38	833365.54
237	BEGIN C&G	19+01.42	6.27' RT.	867.98	489436.51	833354.44



CURB & GUTTER RADIUS STAKING INFORMATION					
POINT NUMBER	RADIUS	STATION	OFFSET	NORTHING	EASTING
2A	14.00'	18+46.18	35.00' LT.	489500.92	833328.11
2B	15.00'	18+98.54	36.00' LT.	489473.59	833374.94
2C	20.00'	18+47.19	40.37' RT.	489435.05	833291.48
2D	16.00'	19+18.65	33.01' RT.	489404.89	833353.77
2E	17.00'	20+94.69	29.00' RT.	489316.59	833508.56
2F	16.00'	21+51.10	28.00' RT.	489289.18	833557.88
2G	3.00'	18+42.07	4.17' RT.	489468.96	833305.08
2H	3.00'	18+51.11	4.21' RT.	489464.45	833312.87
2I	2.65' (FLANGE)	19+13.92	2.65' RT.	489432.70	833366.83



PROJECT NO: 5992-10-16

HWY: ATWOOD AVENUE

COUNTY: DANE

PAVING DETAILS

SHEET

E

CURB & GUTTER STAKING INFORMATION						
POINT NUMBER	DESCRIPTION	STATION	OFFSET	ELEVATION	NORTHING	EASTING
300	PC	23+70.37	20.15' LT.	858.16	489220.71	833771.85
301	MID PT.	23+84.47	25.78' LT.	857.43	489218.37	833786.84
302	PT	23+91.09	39.45' LT.	856.87	489226.74	833799.51
303	BEND PT.	23+91.64	46.27' LT.	856.51	489232.32	833803.46
304	PC	24+17.26	43.83' LT.	856.47	489217.17	833824.25
305	MID PT.	24+22.68	27.62' LT.	856.69	489200.45	833820.65
306	PT	24+38.36	20.81' LT.	856.09	489186.60	833830.67
307	BEND PT.	24+57.94	21.00' LT.	855.49	489176.79	833847.60
308	PC	25+94.10	21.00' LT.	852.01	489108.63	833965.24
309	MID PT.	26+59.62	21.46' LT.	851.08	489077.40	834021.97
310	PT	27+25.33	21.96' LT.	850.65	489048.69	834080.00
311	PC	23+53.78	11.00' RT.	858.97	489202.30	833741.78
312	MID PT.	23+65.96	17.68' RT.	858.83	489190.42	833748.76
313	PT	23+66.47	31.45' RT.	859.27	489178.31	833742.18
314	PC	23+78.45	60.89' RT.	860.83	489146.88	833737.47
315	MID PT.	24+08.82	29.06' RT.	857.64	489158.77	833779.82
316	PT	24+50.48	19.31' RT.	855.75	489145.92	833820.64
317	PC	24+81.04	21.24' RT.	854.84	489128.76	833846.24
318	MID PT.	24+82.68	21.47' RT.	854.78	489127.73	833847.54
319	PT	24+84.27	21.95' RT.	854.71	489126.52	833848.68
320	PC	25+08.88	31.43' RT.	854.62	489105.98	833865.22
321	MID PT.	25+10.24	31.84' RT.	854.60	489104.95	833866.19
322	PT/PC	25+11.64	32.02' RT.	854.56	489104.09	833867.31
323	MID PT.	25+44.12	33.39' RT.	853.68	489086.63	833894.73
324	PT/PC	25+76.62	33.81' RT.	852.92	489069.97	833922.64

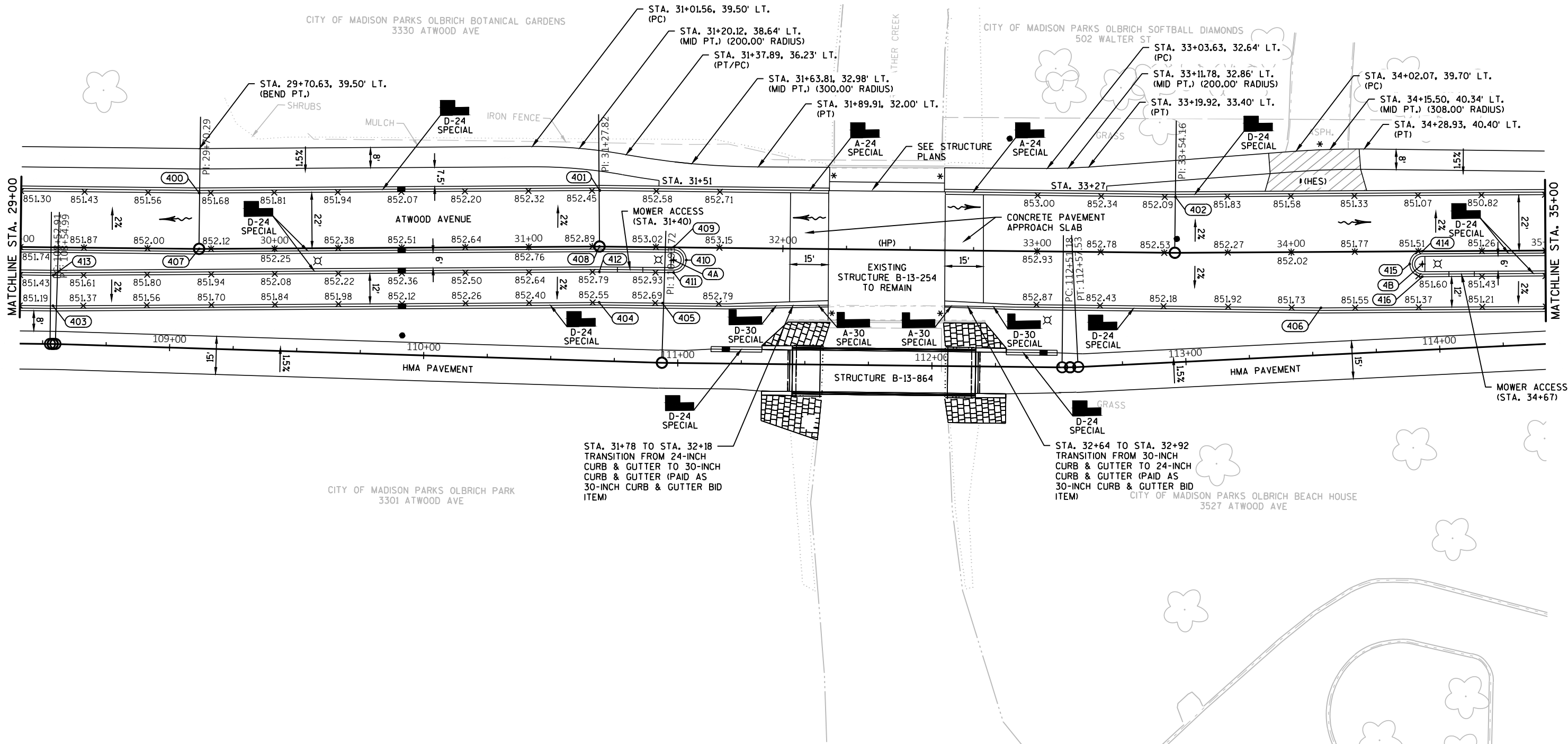
CURB & GUTTER STAKING INFORMATION						
POINT NUMBER	DESCRIPTION	STATION	OFFSET	ELEVATION	NORTHING	EASTING
325	MID PT.	25+78.69	33.56' RT.	852.87	489069.14	833924.55
326	PT	25+80.65	32.85' RT.	852.80	489068.78	833926.61
327	PC	25+92.30	26.98' RT.	852.38	489068.01	833939.63
328	MID PT.	25+94.73	26.10' RT.	851.89	489067.56	833942.18
329	PT/PC	25+97.30	25.81' RT.	851.86	489066.52	833944.54
330	MID PT.	26+25.69	25.72' RT.	851.41	489052.32	833969.52
331	PT/PC	26+53.94	25.40' RT.	851.04	489038.76	833994.85
332	MID PT.	26+73.86	34.94' RT.	851.36	489020.84	834008.37
333	PT/PC	26+81.31	49.05' RT.	851.25	489004.78	834008.69
334	MID PT.	26+75.04	73.52' RT.	851.45	488986.04	833991.66
335	PT	26+60.48	93.65' RT.	0.00	488975.36	833968.70
336	PC	26+35.58	114.84' RT.	851.89	488969.42	833935.19
337	MID PT.	26+20.63	120.45' RT.	852.23	488972.41	833918.38
338	PT/PC	26+06.38	112.98' RT.	852.52	488986.51	833908.76
339	MID PT.	26+04.32	111.97' RT.	852.57	488988.45	833907.42
340	PT/PC	26+02.11	112.81' RT.	852.63	488988.83	833905.09
341	PT	26+39.52	143.51' RT.	851.42	488942.25	833925.10
342	PC	26+75.35	108.99' RT.	851.12	488954.40	833975.62
343	MID PT.	26+94.20	82.38' RT.	0.00	488968.97	834005.59
344	PT/PC	27+02.69	48.40' RT.	851.10	488995.42	834028.69
345	MID PT.	27+11.77	30.14' RT.	850.44	489007.69	834045.12
346	PT	27+29.05	23.02' RT.	850.50	489006.47	834064.05
347	PC	27+42.63	0.00' .	851.06	489021.51	834086.20
348	MID PT.	27+37.13	5.50' RT.	850.82	489018.86	834078.89
349	PT	27+42.63	11.00' RT.	850.65	489011.54	834081.54

CURB & GUTTER RADIUS STAKING INFORMATION					
POINT NUMBER	RADIUS	STATION	OFFSET	NORTHING	EASTING
3A	20.00'	23+70.16	41.15' LT.	489238.88	833782.37
3B	20.00'	24+38.16	41.81' LT.	489204.77	833841.20
3C	13.00'	23+53.78	25.00' RT.	489190.19	833734.76
3D	75.00'	24+46.28	95.19' RT.	489082.78	833778.33
3E	10.00'	24+80.32	32.22' RT.	489119.62	833840.11
3F	10.00'	25+12.12	23.04' RT.	489111.62	833872.23
3G	10.00'	25+76.60	24.81' RT.	489077.77	833927.14
3H	10.00'	25+97.25	36.81' RT.	489057.03	833938.98
3I	25.00'	26+54.30	51.40' RT.	489015.68	833982.88
3J	20.00'	26+21.84	98.48' RT.	488990.88	833930.32
3K	5.00'	26+04.20	114.97' RT.	488985.92	833905.82
3L	25.00'	27+29.19	49.02' RT.	488982.92	834053.04
3M	4.50'	27+42.63	5.50' RT.	489016.53	834083.87

CURB & GUTTER STAKING INFORMATION						
POINT NUMBER	DESCRIPTION	STATION	OFFSET	ELEVATION	NORTHING	EASTING
400	BEND PT.	29+70.48	22.00' LT.	851.66	488945.06	834301.56
401	BEND PT.	31+27.82	22.00' LT.	852.47	488880.80	834445.44
402	BEND PT.	33+54.55	22.00' LT.	852.04	488784.84	834650.60
403	BEND PT.	29+13.09	23.00' RT.	851.28	488928.45	834230.86
404	BEND PT.	31+27.56	22.00' RT.	852.56	488840.83	834427.05
405	BEND PT.	31+52.86	22.00' RT.	852.70	488830.27	834449.61
406	BEND PT.	34+11.46	22.00' RT.	851.64	488721.46	834684.62
407	BEND PT.	29+70.29	0.00' .	852.10	488925.05	834292.42
408	BEND PT.	31+27.82	0.00' .	852.91	488860.81	834436.26

CURB & GUTTER STAKING INFORMATION						
POINT NUMBER	DESCRIPTION	STATION	OFFSET	ELEVATION	NORTHING	EASTING
409	PC	31+56.97	0.00' LT.	853.06	488848.46	834462.66
410	MID PT.	31+62.01	4.96' RT.	853.01	488841.83	834465.12
411	PT	31+57.05	10.00' RT.	852.97	488839.37	834458.49
412	BEND PT.	31+27.67	10.00' RT.	852.80	488851.74	834432.04
413	BEND PT.	29+12.98	11.00' RT.	851.52	488939.37	834235.85
414	PC	34+51.53	0.00' .	851.50	488725.20	834730.18
415	MID PT.	34+46.53	4.96' RT.	851.56	488722.72	834723.59
416	PT	34+51.44	10.00' RT.	851.60	488716.11	834726.02

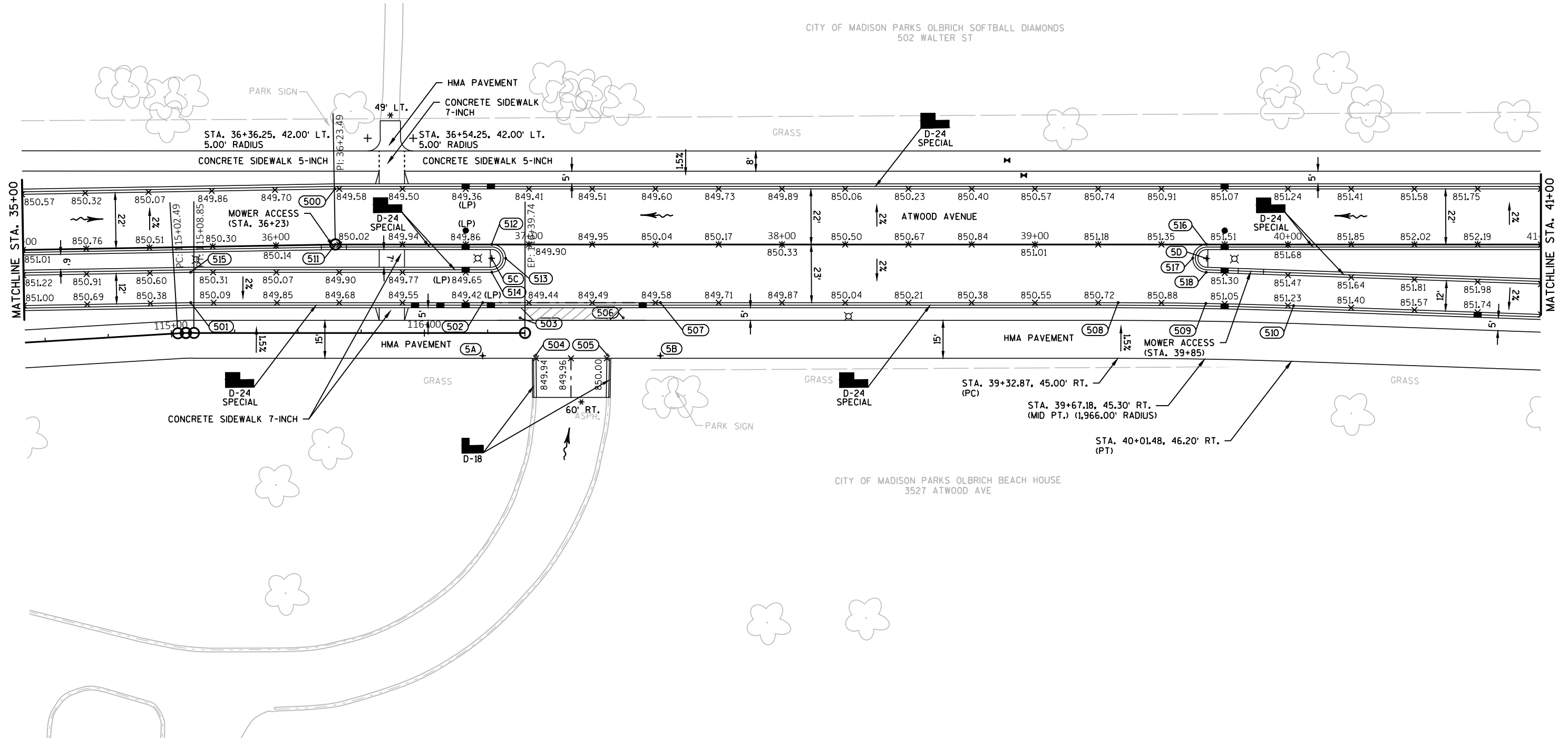
CURB & GUTTER RADIUS STAKING INFORMATION					
POINT NUMBER	RADIUS	STATION	OFFSET	NORTHING	EASTING
4A	4.00'	31+57.01	5.00' RT.	488843.91	834460.58
4B	4.00'	34+51.53	5.00' RT.	488720.64	834728.14

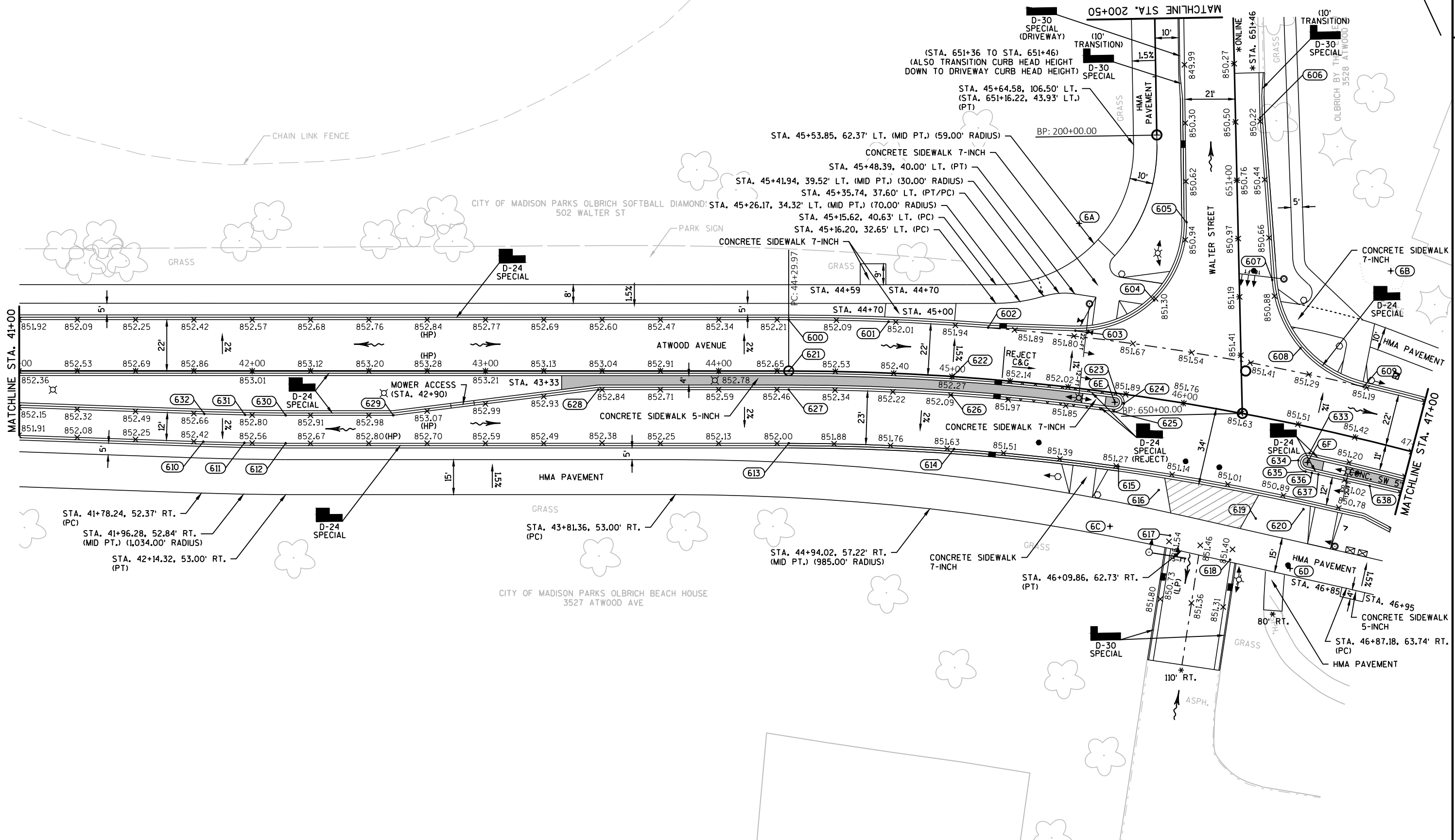


CURB & GUTTER STAKING INFORMATION						
POINT NUMBER	DESCRIPTION	STATION	OFFSET	ELEVATION	NORTHING	EASTING
500	BEND PT.	36+23.49	22.00' LT.	849.58	488675.09	834896.34
501	BEND PT.	35+65.93	22.00' RT.	850.14	488658.46	834825.66
502	PC	36+81.73	23.00' RT.	849.41	488609.57	834930.20
503	MID PT.	36+96.51	29.09' RT.	850.04	488597.79	834941.01
504	PT	37+02.73	43.82' RT.	849.92	488581.81	834940.40
505	PC	37+30.99	43.69' RT.	849.98	488569.95	834966.05
506	MID PT.	37+37.25	29.04' RT.	850.13	488580.57	834977.93
507	PT	37+51.99	23.00' RT.	849.59	488579.80	834993.84
508	PC	39+32.87	23.00' RT.	850.77	488503.16	835157.69
509	MID PT.	39+67.56	23.30' RT.	851.00	488488.19	835188.98

CURB & GUTTER STAKING INFORMATION						
POINT NUMBER	DESCRIPTION	STATION	OFFSET	ELEVATION	NORTHING	EASTING
510	PT	40+02.25	24.21' RT.	851.24	488472.67	835220.02
511	BEND PT.	36+23.49	0.00' .	850.02	488655.08	834887.19
512	PC	36+85.27	0.00' .	849.90	488628.90	834943.15
513	MID PT.	36+90.77	5.50' RT.	849.80	488621.59	834945.80
514	PT	36+85.27	11.00' RT.	849.71	488618.94	834938.49
515	BEND PT.	35+66.03	10.00' RT.	850.41	488669.38	834830.65
516	PC	39+67.87	0.00' .	851.47	488509.16	835199.14
517	MID PT.	39+62.38	5.40' RT.	851.41	488506.60	835191.87
518	PT	39+67.68	11.00' RT.	851.34	488499.28	835194.31

CURB & GUTTER RADIUS STAKING INFORMATION					
POINT NUMBER	RADIUS	STATION	OFFSET	NORTHING	EASTING
5A	20.00'	36+81.73	44.00' RT.	488590.55	834921.30
5B	20.00'	37+51.99	44.00' RT.	488560.78	834984.94
5C	4.50'	36+85.27	5.50' RT.	488623.92	834940.82
5D	4.50'	39+67.87	5.50' RT.	488504.18	835196.81



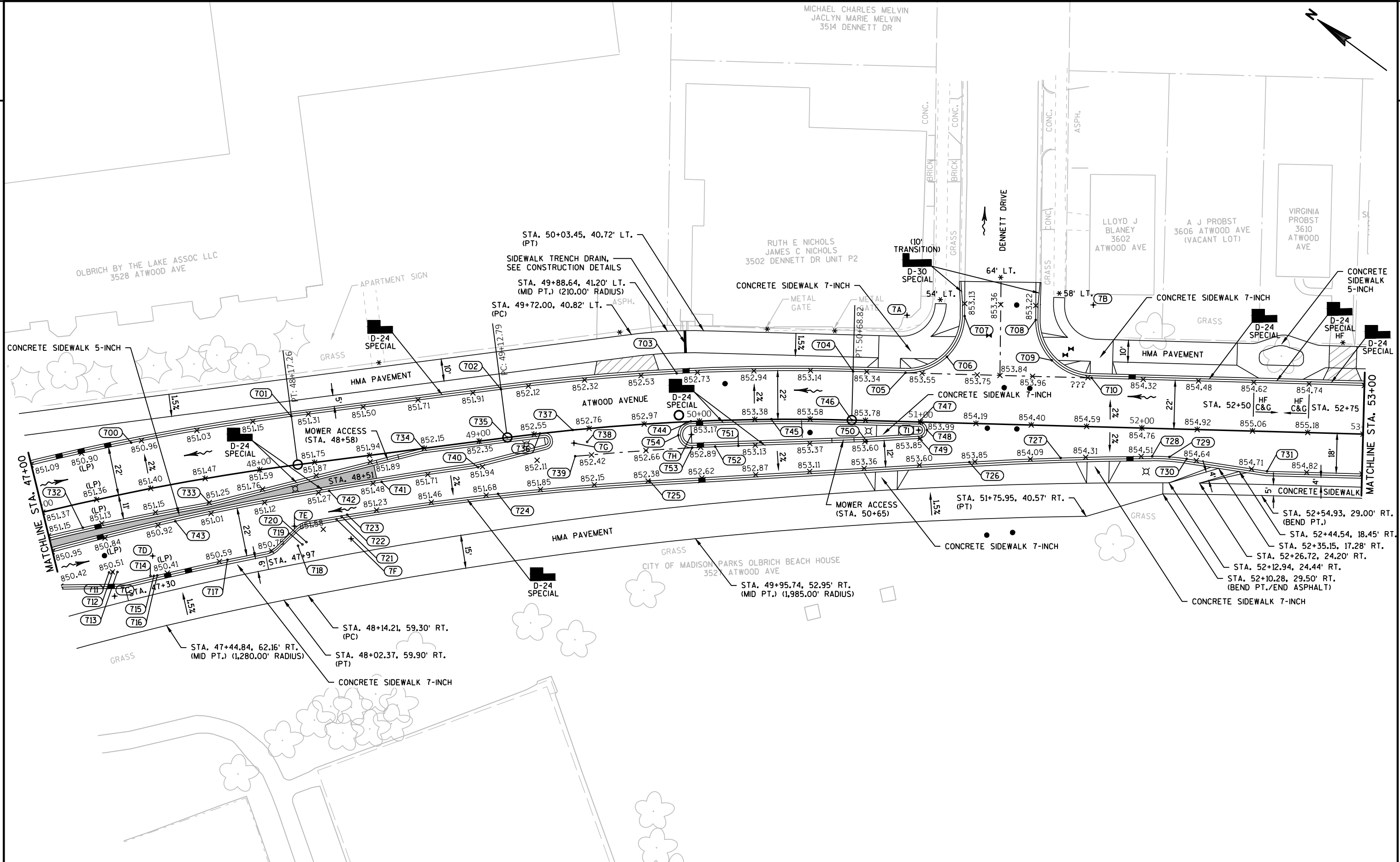




CURB & GUTTER STAKING INFORMATION						
POINT NUMBER	DESCRIPTION	STATION	OFFSET	ELEVATION	NORTHING	EASTING
600	PC	44+29.97	22.00' LT.	852.19	488333.31	835627.03
601	MID PT.	44+71.88	22.00' LT.	852.02	488314.41	835665.42
602	PT	45+13.79	22.00' LT.	851.91	488294.00	835703.01
603	PC	45+50.34	24.33' LT.	851.79	488276.96	835736.34
604	MID PT.	45+81.17	41.65' LT.	851.32	488274.50	835772.47
605	PT	45+89.46	76.80' LT.	850.84	488298.96	835799.19
606	BEND PT.	46+11.25	126.03' LT.	850.21	488326.11	835846.70
607	PC	46+27.45	58.64' LT.	850.82	488260.96	835822.03
608	MID PT.	46+44.28	32.26' LT.	851.10	488229.31	835820.56
609	PT	46+73.51	22.00' LT.	851.12	488202.91	835838.07
610	PC	41+79.01	30.38' RT.	852.44	488392.19	835377.51
611	MID PT.	41+96.66	30.85' RT.	852.54	488384.29	835393.31
612	PT	42+14.32	31.00' RT.	852.62	488376.67	835409.24
613	PC	44+29.97	31.00' RT.	851.98	488285.30	835604.58
614	MID PT.	45+03.05	31.00' RT.	851.62	488253.04	835667.72
615	PT/PC	45+76.12	31.00' RT.	851.26	488216.48	835728.46
616	MID PT.	45+95.32	38.56' RT.	851.81	488199.91	835739.75
617	PT	46+03.61	56.98' RT.	851.50	488180.24	835735.90
618	PC	46+32.42	62.63' RT.	851.48	488159.92	835754.79
619	MID PT.	46+40.13	43.12' RT.	851.78	488171.31	835772.25

CURB & GUTTER STAKING INFORMATION						
POINT NUMBER	DESCRIPTION	STATION	OFFSET	ELEVATION	NORTHING	EASTING
620	PT	46+60.07	35.00' RT.	851.30	488166.21	835792.47
621	PC	44+29.97	0.00' .	852.63	488313.38	835617.71
622	MID PT.	45+00.34	0.00' .	852.27	488281.45	835680.41
623	PT/PC	45+70.71	0.00' .	851.91	488245.40	835740.82
624	MID PT.	45+74.73	3.99' RT.	851.81	488239.87	835742.02
625	PT/PC	45+70.71	8.00' RT.	851.74	488238.67	835736.50
626	MID PT.	45+00.34	8.00' RT.	852.09	488274.45	835676.54
627	PT	44+29.97	8.00' RT.	852.43	488306.13	835614.32
628	BEND PT.	43+48.34	8.00' RT.	852.84	488340.72	835540.38
629	BEND PT.	42+60.46	19.00' RT.	853.02	488367.99	835456.12
630	PC	42+14.32	19.00' RT.	852.87	488387.54	835414.32
631	MID PT.	41+96.87	18.85' RT.	852.79	488395.07	835398.58
632	PT	41+79.42	18.39' RT.	852.68	488402.88	835382.97
633	PC/PC	46+57.35	11.00' RT.	851.26	488186.85	835804.98
634	MID PT.	46+53.29	14.99' RT.	851.19	488186.11	835799.38
635	PT/PC	46+57.35	19.00' RT.	851.10	488180.50	835800.12
636	MID PT.	46+60.24	19.00' RT.	851.08	488178.78	835802.36
637	PT	46+63.12	19.00' RT.	851.07	488177.04	835804.60
638	PC	46+86.13	18.75' RT.	850.98	488163.20	835822.46

CURB & GUTTER RADIUS STAKING INFORMATION					
POINT NUMBER	RADIUS	STATION	OFFSET	NORTHING	EASTING
6A	45.00'	45+46.91	70.19' LT.	488317.92	835757.28
6B	50.00'	46+73.51	73.00' LT.	488242.90	835869.72
6C	25.00'	45+76.12	57.00' RT.	488194.68	835714.28
6D	25.00'	46+59.99	61.00' RT.	488145.66	835776.54
6E	3.00'	45+70.71	4.00' RT.	488242.03	835738.66
6F	3.00'	46+57.35	15.00' RT.	488183.68	835802.55



PROJECT NO: 5992-10-16	HWY: ATWOOD AVENUE	COUNTY: DANE	PAVING DETAILS	SHEET	E
------------------------	--------------------	--------------	----------------	-------	---

CURB & GUTTER STAKING INFORMATION						
POINT NUMBER	DESCRIPTION	STATION	OFFSET	ELEVATION	NORTHING	EASTING
700	MID PT.	47+45.38	22.00' LT.	850.95	488155.44	835894.01
701	PT	48+17.26	22.00' LT.	851.25	488104.25	835946.58
702	PC	49+12.79	22.00' LT.	852.01	488035.30	836012.70
703	MID PT.	49+90.80	22.00' LT.	852.65	487975.66	836065.58
704	PT	50+68.82	22.00' LT.	853.29	487912.08	836113.66
705	PC	50+92.52	22.00' LT.	853.47	487892.63	836127.21
706	MID PT.	51+11.02	29.74' LT.	853.39	487881.87	836144.13
707	PT	51+18.52	48.34' LT.	853.23	487886.35	836163.68
708	PC	51+50.68	47.48' LT.	853.35	487859.47	836181.36
709	MID PT.	51+58.48	29.43' LT.	853.76	487842.76	836171.00
710	PT	51+76.68	22.00' LT.	854.16	487823.57	836175.31
711	PC	47+23.35	33.32' RT.	850.51	488128.69	835840.87
712	MID PT.	47+25.09	33.44' RT.	850.51	488127.49	835842.05
713	PT	47+27.24	33.94' RT.	850.50	488125.74	835843.30
714	PC	47+41.98	38.70' RT.	850.38	488112.73	835850.76
715	MID PT.	47+43.55	39.05' RT.	850.38	488111.45	835851.64
716	PT/PC	47+45.16	39.13' RT.	850.38	488110.35	835852.73
717	MID PT.	47+78.88	37.88' RT.	850.62	488089.03	835877.27
718	PT/PC	48+12.56	36.40' RT.	851.66	488067.10	835901.28
719	MID PT.	48+14.69	36.05' RT.	851.71	488065.86	835902.96
720	PT	48+16.68	35.23' RT.	851.74	488065.04	835904.88
721	PC	48+31.48	26.79' RT.	851.52	488060.22	835921.21
722	MID PT.	48+33.93	25.75' RT.	851.08	488059.17	835923.65
723	PT/PC	48+36.55	25.34' RT.	851.12	488057.56	835925.76
724	MID PT.	49+05.36	24.73' RT.	851.72	488008.32	835973.83
725	PT	49+75.78	25.79' RT.	852.39	487956.62	836019.25
726	PC	51+22.46	17.54' RT.	853.82	487845.47	836111.88
727	MID PT.	51+63.66	14.55' RT.	854.21	487813.37	836137.88

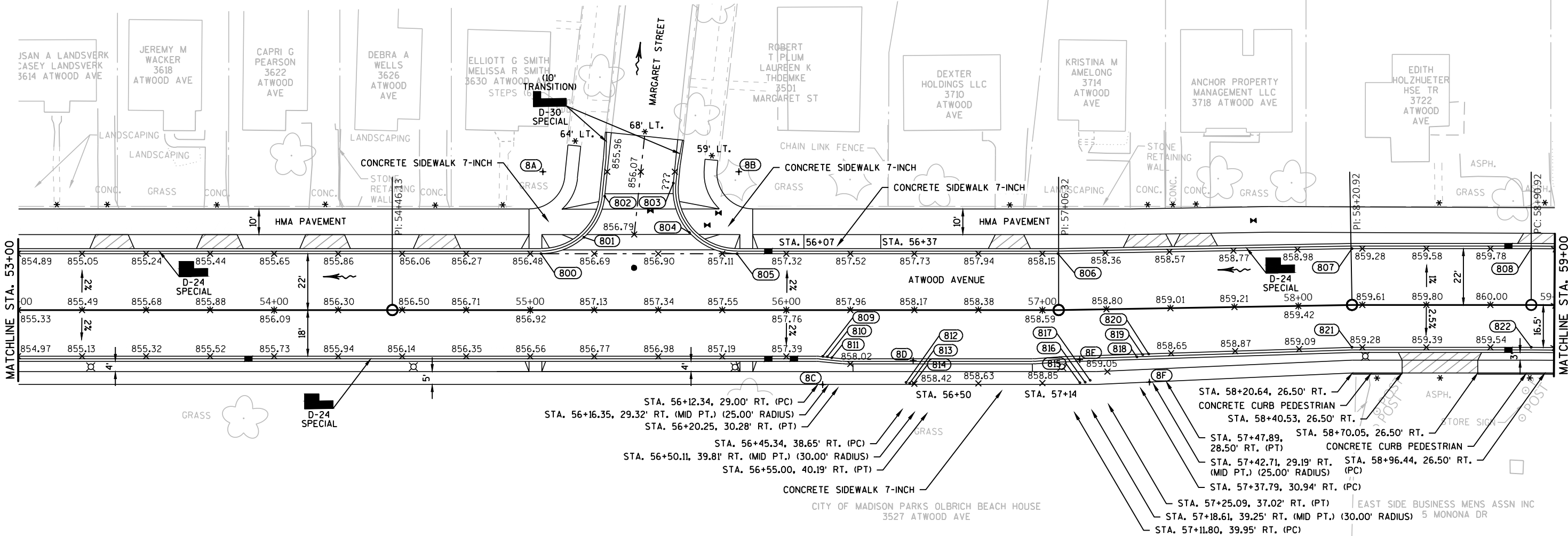
CURB & GUTTER STAKING INFORMATION						
POINT NUMBER	DESCRIPTION	STATION	OFFSET	ELEVATION	NORTHING	EASTING
728	PT/PC	52+04.93	12.70' RT.	854.54	487780.56	836162.98
729	MID PT.	52+12.76	12.77' RT.	854.59	487774.10	836167.40
730	PT	52+20.56	13.44' RT.	854.62	487767.31	836171.31
731	BEND PT.	52+57.07	18.00' RT.	854.75	487734.74	836188.44
732	MID PT.	47+16.05	11.00' RT.	851.08	488150.24	835850.07
733	PT	47+74.76	11.00' RT.	851.25	488111.17	835893.04
734	BEND PT.	48+74.36	0.00' .	852.14	488047.81	835970.22
735	PC	49+12.79	0.00' .	852.46	488020.07	835996.82
736	MID PT.	49+27.67	0.00' .	852.58	488009.25	836007.04
737	PT/PC	49+42.56	0.00' .	852.70	487998.28	836017.10
738	MID PT.	49+48.53	5.97' RT.	852.53	487989.86	836016.63
739	PT/PC	49+42.50	11.92' RT.	852.35	487990.33	836008.22
740	MID PT.	48+98.00	11.68' RT.	851.92	488022.66	835978.16
741	PT	48+53.87	12.63' RT.	851.51	488053.86	835946.93
742	PT	48+29.85	13.58' RT.	851.31	488070.53	835929.61
743	MID PT.	47+58.18	16.66' RT.	850.96	488118.30	835877.27
744	PC/PT	49+96.09	0.00' .	853.14	487957.62	836051.91
745	MID PT.	50+32.46	0.00' .	853.43	487928.96	836074.29
746	PT	50+68.82	0.00' .	853.73	487899.50	836095.61
747	PC	50+99.17	0.00' .	853.98	487874.60	836112.96
748	MID PT.	51+02.92	3.59' RT.	853.91	487869.47	836112.15
749	PT	50+99.49	7.48' RT.	853.84	487870.06	836107.00
750	BEND PT.	50+75.99	9.51' RT.	853.61	487888.19	836091.90
751	PC	50+17.25	11.73' RT.	853.06	487933.84	836055.79
752	MID PT.	50+06.69	11.82' RT.	852.96	487942.01	836049.28
753	PT/PC	49+96.12	11.88' RT.	852.86	487950.11	836042.69
754	MID PT.	49+90.11	5.94' RT.	853.00	487958.48	836043.54

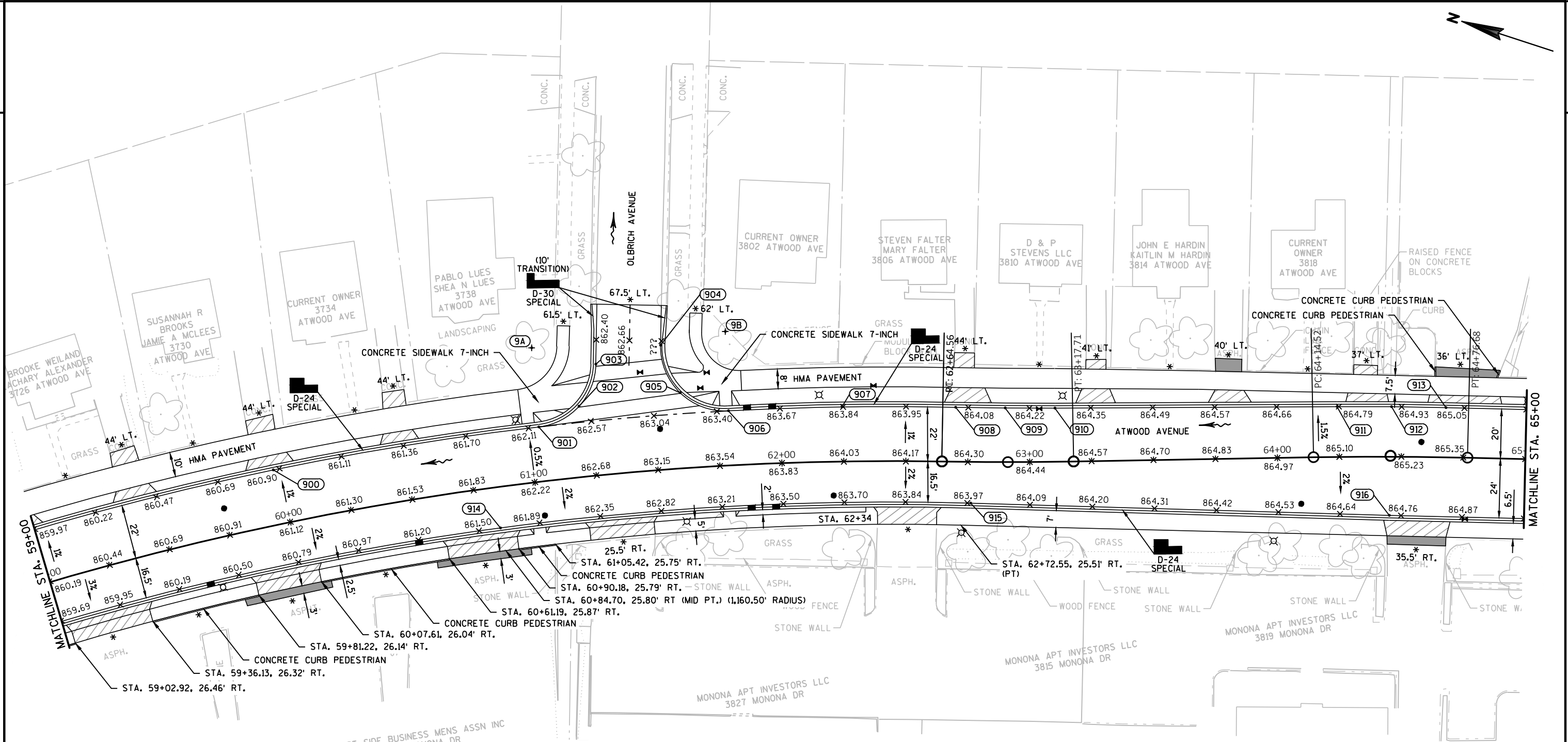
CURB & GUTTER RADIUS STAKING INFORMATION					
POINT NUMBER	RADIUS	STATION	OFFSET	NORTHING	EASTING
7A	25.00'	50+92.52	48.00' LT.	487907.49	836148.54
7B	25.00'	51+76.54	55.00' LT.	487842.55	836202.31
7C	10.00'	47+23.52	44.34' RT.	488120.28	835833.75
7D	10.00'	47+44.86	30.14' RT.	488117.20	835858.56
7E	10.00'	48+12.10	27.41' RT.	488073.67	835907.43
7F	10.00'	48+36.94	36.33' RT.	488049.67	835918.09
7G	4.96'	49+42.53	5.96' RT.	487994.31	836012.66
7H	4.94'	49+96.09	5.94' RT.	487953.88	836047.29
7I	2.75'	50+99.17	3.75' RT.	487872.46	836109.88

CURB & GUTTER STAKING INFORMATION						
POINT NUMBER	DESCRIPTION	STATION	OFFSET	ELEVATION	NORTHING	EASTING
800	PC	55+04.23	22.00' LT.	856.52	487554.80	836362.53
801	MID PT.	55+20.97	28.43' LT.	856.60	487544.74	836377.38
802	PT	55+29.10	44.43' LT.	856.11	487547.21	836395.14
803	PC	55+55.87	49.57' LT.	856.33	487528.19	836414.67
804	MID PT.	55+62.17	30.26' LT.	856.99	487511.97	836402.42
805	PT	55+80.74	22.00' LT.	857.15	487492.02	836406.25
806	BEND PT.	57+06.11	22.00' LT.	858.20	487389.14	836477.91
807	BEND PT.	58+20.92	22.00' LT.	859.24	487296.10	836545.16
808	PC	58+90.92	22.00' LT.	859.90	487238.66	836585.17
809	PC	56+14.25	18.02' RT.	857.45	487441.65	836392.57
810	MID PT.	56+16.01	18.16' RT.	857.46	487440.12	836393.46
811	PT	56+17.72	18.59' RT.	857.47	487438.47	836394.09

CURB & GUTTER STAKING INFORMATION						
POINT NUMBER	DESCRIPTION	STATION	OFFSET	ELEVATION	NORTHING	EASTING
812	PC	56+46.73	28.25' RT.	858.39	487409.15	836402.74
813	MID PT.	56+48.16	28.60' RT.	857.59	487407.77	836403.27
814	PT	56+49.63	28.72' RT.	857.60	487406.50	836404.01
815	PC	57+14.14	28.48' RT.	859.01	487353.38	836441.48
816	MID PT.	57+16.19	28.27' RT.	858.16	487351.84	836442.85
817	PT	57+18.13	27.60' RT.	859.03	487350.66	836444.53
818	PC	57+36.58	18.77' RT.	858.70	487340.88	836462.50
819	MID PT.	57+38.82	17.98' RT.	858.54	487339.53	836464.44
820	PT	57+41.17	17.69' RT.	858.58	487337.79	836466.05
821	BEND PT.	58+20.63	16.50' RT.	859.25	487274.09	836513.57
822	PC	58+90.92	16.50' RT.	859.64	487216.65	836553.58

CURB & GUTTER RADIUS STAKING INFORMATION					
POINT NUMBER	RADIUS	STATION	OFFSET	NORTHING	EASTING
8A	24.00'	55+04.96	54.00' LT.	487572.49	836389.20
8B	24.00'	55+81.46	54.00' LT.	487509.72	836432.93
8C	10.00'	56+14.25	29.02' RT.	487435.36	836383.54
8D	10.00'	56+49.58	19.72' RT.	487411.69	836411.37
8E	10.00'	57+14.25	19.48' RT.	487358.56	836448.84
8F	10.00'	57+41.33	28.69' RT.	487331.22	836457.24



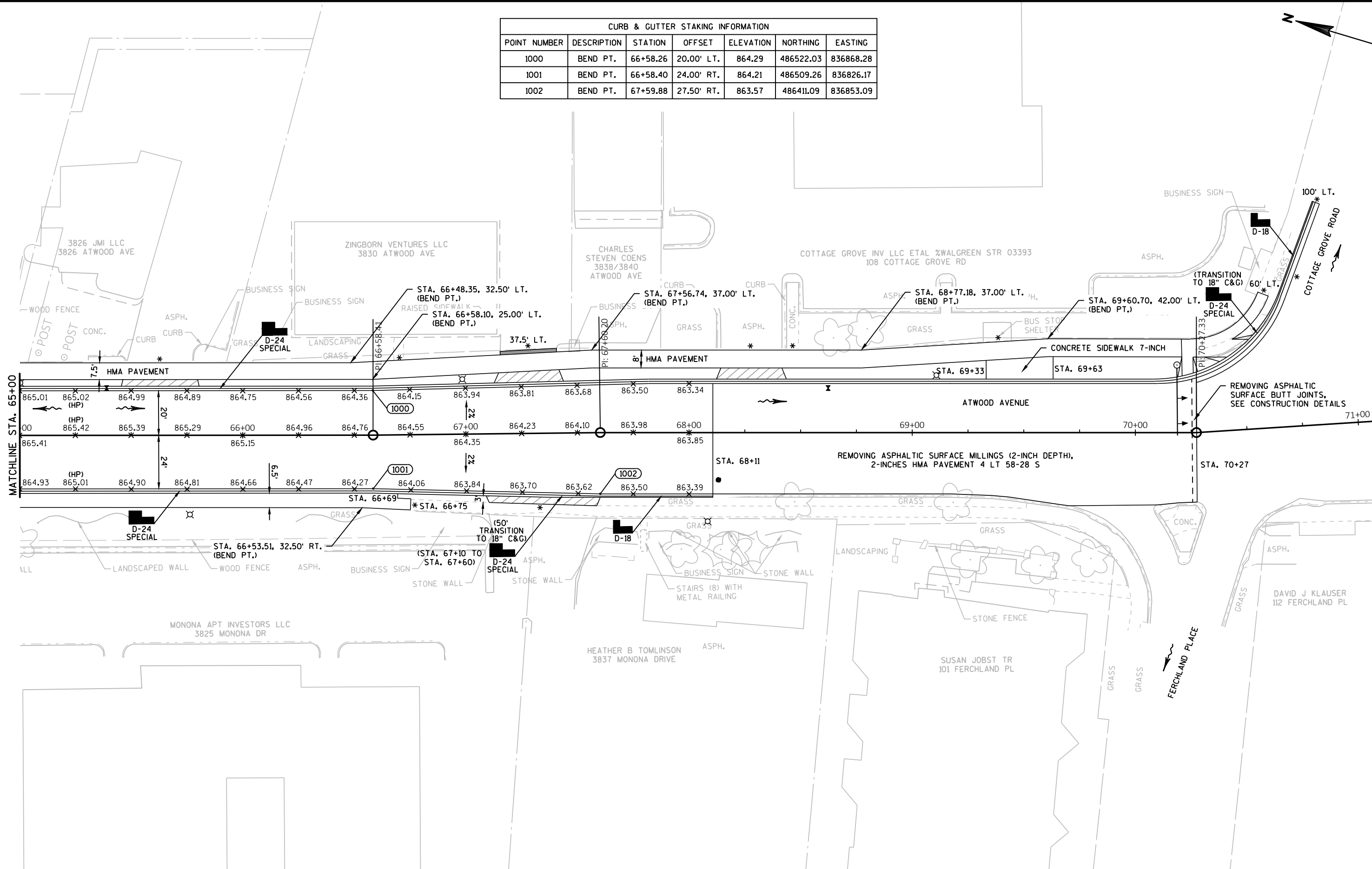


CURB & GUTTER STAKING INFORMATION						
POINT NUMBER	DESCRIPTION	STATION	OFFSET	ELEVATION	NORTHING	EASTING
900	MID PT.	59+97.52	22.00' LT.	860.88	487146.94	836643.19
901	PT/PC	61+04.13	22.00' LT.	862.18	487050.44	836692.83
902	MID PT.	61+20.82	28.52' LT.	862.63	487037.58	836705.79
903	PT	61+28.96	44.73' LT.	862.53	487036.41	836724.00
904	PC	61+54.66	50.18' LT.	862.61	487013.92	836739.41
905	MID PT.	61+60.98	30.45' LT.	863.22	487000.44	836723.59
906	PT/PC	61+79.55	22.00' LT.	863.45	486979.68	836722.69
907	MID PT.	62+24.58	22.00' LT.	863.84	486936.60	836738.38
908	PT/PC	62+69.78	21.98' LT.	864.06	486892.95	836752.43

CURB & GUTTER STAKING INFORMATION						
POINT NUMBER	DESCRIPTION	STATION	OFFSET	ELEVATION	NORTHING	EASTING
909	MID PT.	62+90.11	21.83' LT.	864.17	486873.82	836758.34
910	PT	63+10.43	21.67' LT.	864.28	486854.76	836764.51
911	PC	64+24.27	20.29' LT.	864.79	486746.67	836800.33
912	MID PT.	64+45.94	20.16' LT.	864.91	486725.77	836807.08
913	PT	64+67.61	20.03' LT.	0.00	486704.78	836813.54
914	MID PT.	60+83.76	16.50' RT.	861.63	487052.55	836649.31
915	PT	62+76.30	16.61' RT.	863.98	486875.24	836717.54
916	BEND PT.	64+45.18	23.67' RT.	864.73	486713.04	836765.13

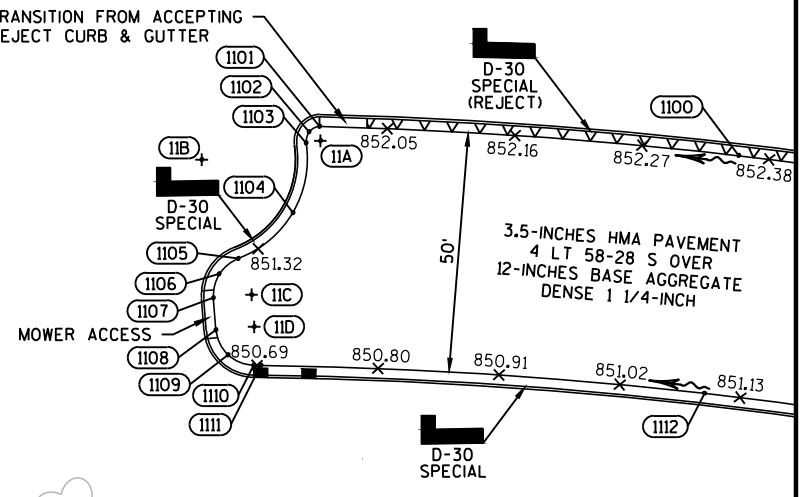
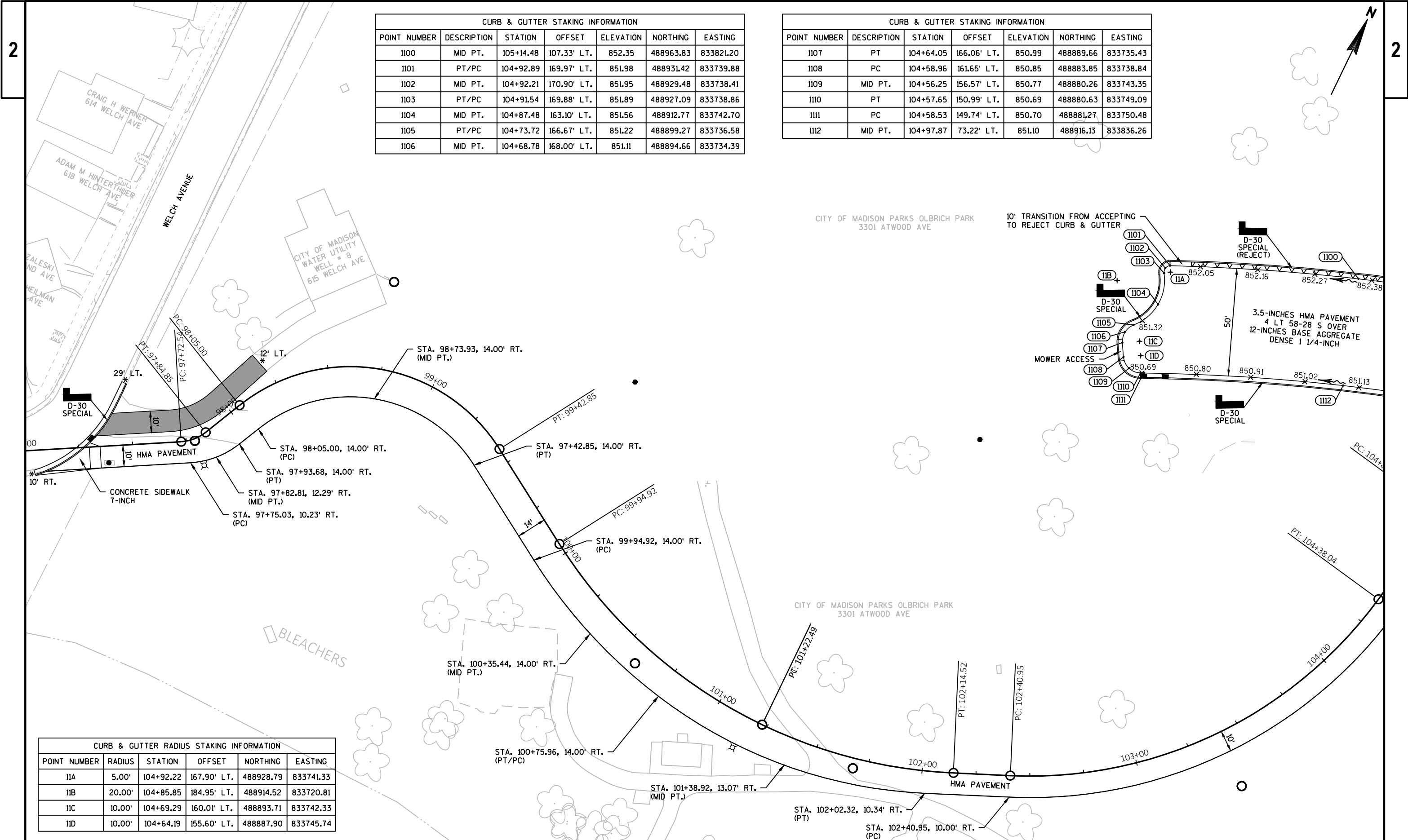
CURB & GUTTER RADIUS STAKING INFORMATION					
POINT NUMBER	RADIUS	STATION	OFFSET	NORTHING	EASTING
9A	25.00'	61+04.92	54.00' LT.	487063.05	836722.25
9B	25.00'	61+79.98	54.00' LT.	486990.78	836752.71

CURB & GUTTER STAKING INFORMATION						
POINT NUMBER	DESCRIPTION	STATION	OFFSET	ELEVATION	NORTHING	EASTING
1000	BEND PT.	66+58.26	20.00' LT.	864.29	486522.03	836868.28
1001	BEND PT.	66+58.40	24.00' RT.	864.21	486509.26	836826.17
1002	BEND PT.	67+59.88	27.50' RT.	863.57	486411.09	836853.09



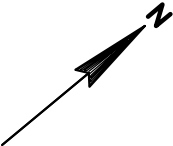
CURB & GUTTER STAKING INFORMATION						
POINT NUMBER	DESCRIPTION	STATION	OFFSET	ELEVATION	NORTHING	EASTING
1100	MID PT.	105+14.48	107.33' LT.	852.35	488963.83	833821.20
1101	PT/PC	104+92.89	169.97' LT.	851.98	488931.42	833739.88
1102	MID PT.	104+92.21	170.90' LT.	851.95	488929.48	833738.41
1103	PT/PC	104+91.54	169.88' LT.	851.89	488927.09	833738.86
1104	MID PT.	104+87.48	163.10' LT.	851.56	488912.77	833742.70
1105	PT/PC	104+73.72	166.67' LT.	851.22	488899.27	833736.58
1106	MID PT.	104+68.78	168.00' LT.	851.11	488894.66	833734.39

CURB & GUTTER STAKING INFORMATION						
POINT NUMBER	DESCRIPTION	STATION	OFFSET	ELEVATION	NORTHING	EASTING
1107	PT	104+64.05	166.06' LT.	850.99	488889.66	833735.43
1108	PC	104+58.96	161.65' LT.	850.85	488883.85	833738.84
1109	MID PT.	104+56.25	156.57' LT.	850.77	488880.26	833743.35
1110	PT	104+57.65	150.99' LT.	850.69	488880.63	833749.09
1111	PC	104+58.53	149.74' LT.	850.70	488881.27	833750.48
1112	MID PT.	104+97.87	73.22' LT.	851.10	488916.13	833836.26



CURB & GUTTER RADIUS STAKING INFORMATION					
POINT NUMBER	RADIUS	STATION	OFFSET	NORTHING	EASTING
11A	5.00'	104+92.22	167.90' LT.	488928.79	833741.33
11B	20.00'	104+85.85	184.95' LT.	488914.52	833720.81
11C	10.00'	104+69.29	160.01' LT.	488893.71	833742.33
11D	10.00'	104+64.19	155.60' LT.	488887.90	833745.74

CURB & GUTTER STAKING INFORMATION						
POINT NUMBER	DESCRIPTION	STATION	OFFSET	ELEVATION	NORTHING	EASTING
1200	PC	651+95.08	20.88' LT.	849.56	488401.52	835845.59
1201	MID PT.	652+32.33	19.61' LT.	849.56	488435.11	835861.75
1202	PT	652+69.49	16.61' LT.	849.69	488467.91	835879.46



5' TRANSITION FROM DRIVEWAY CURB & GUTTER TO GUTTER

STA. 651+80

STA. 652+15

5' TRANSITION FROM GUTTER TO DRIVEWAY CURB & GUTTER

MATCHLINE STA. 200+50

PC: 200+10.13

1200

1201

1202

(HES)

(LP)

ONLINE

D-30 SPECIAL (DRIVEWAY)

GUTTER D-30 SPECIAL

D-30 SPECIAL (DRIVEWAY)

STA. 652+00

SSOC LLC /E

JOHNS STREET

ROBERT CAREY 505 WALTER ST

GRANT MOORE JENNIFER MOORE 3501 SARGENT ST

SARGENT STREET

BARBARA L SEYMOUR 3504 SARGENT ST

Laurie Solchenberger 401 Walter St

CITY OF MADISON PARKS OLBRICH SOFTBALL DIAMONDS 502 WALTER ST

MADISON METRO SEWERAGE DISTRICT STATION 6 402 WALTER ST

PT: 202+87.60

EP: 206+36.41

