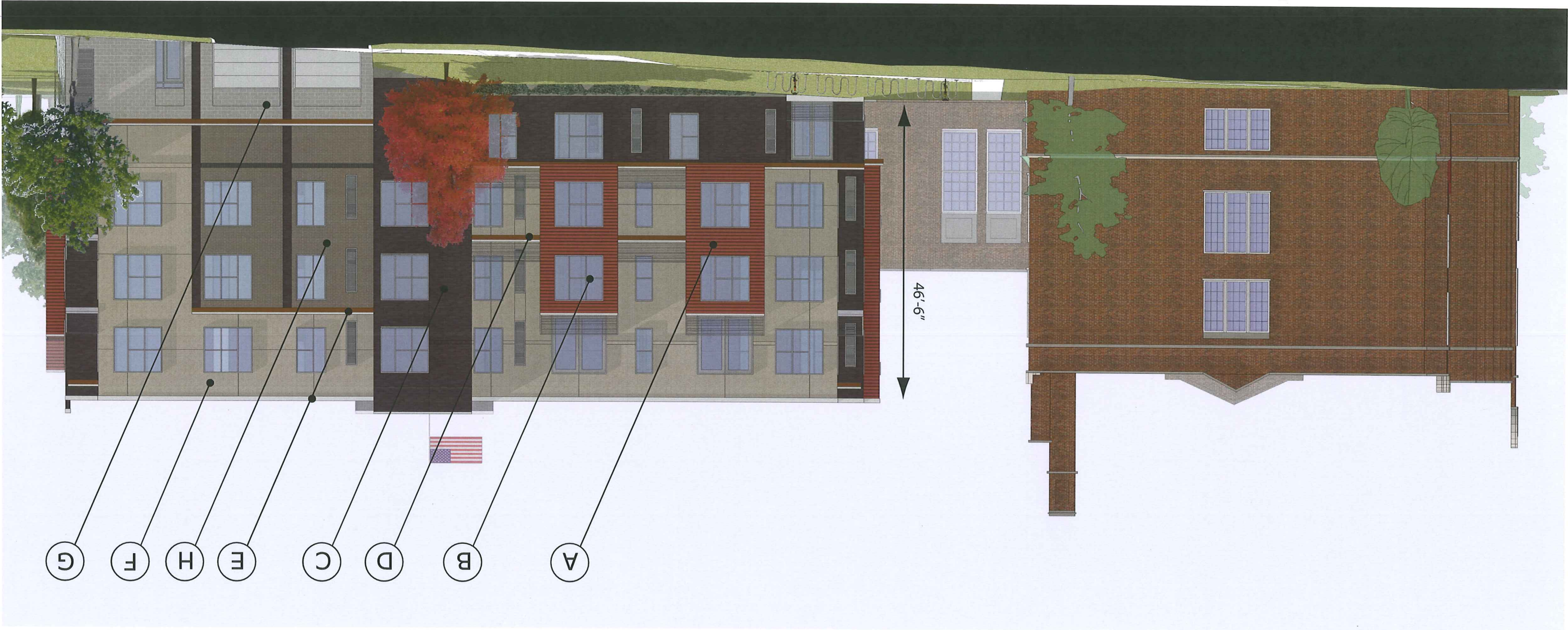


the Longfellow

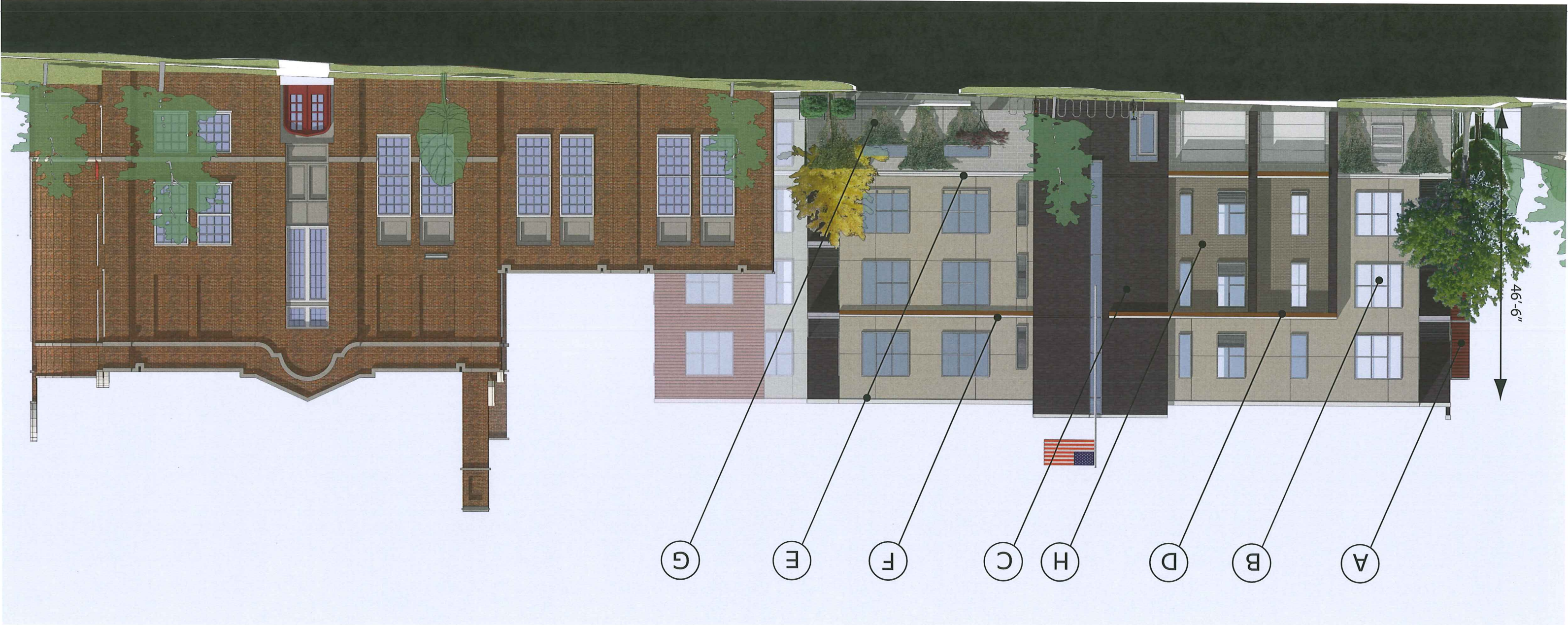
Alexander
company



NORTH ELEVATION

- A = Horizontal architectural metal panel - Terra Cota
- B = Anodized aluminum window and door frames
- C = Brick - Ultra Brown
- D = Cedar fascia and soffit - Honey Oak stain
- E = White coping drip edge
- F = EIFS - Anew Gray
- G = Masonry Block - Grey

the Longfellow

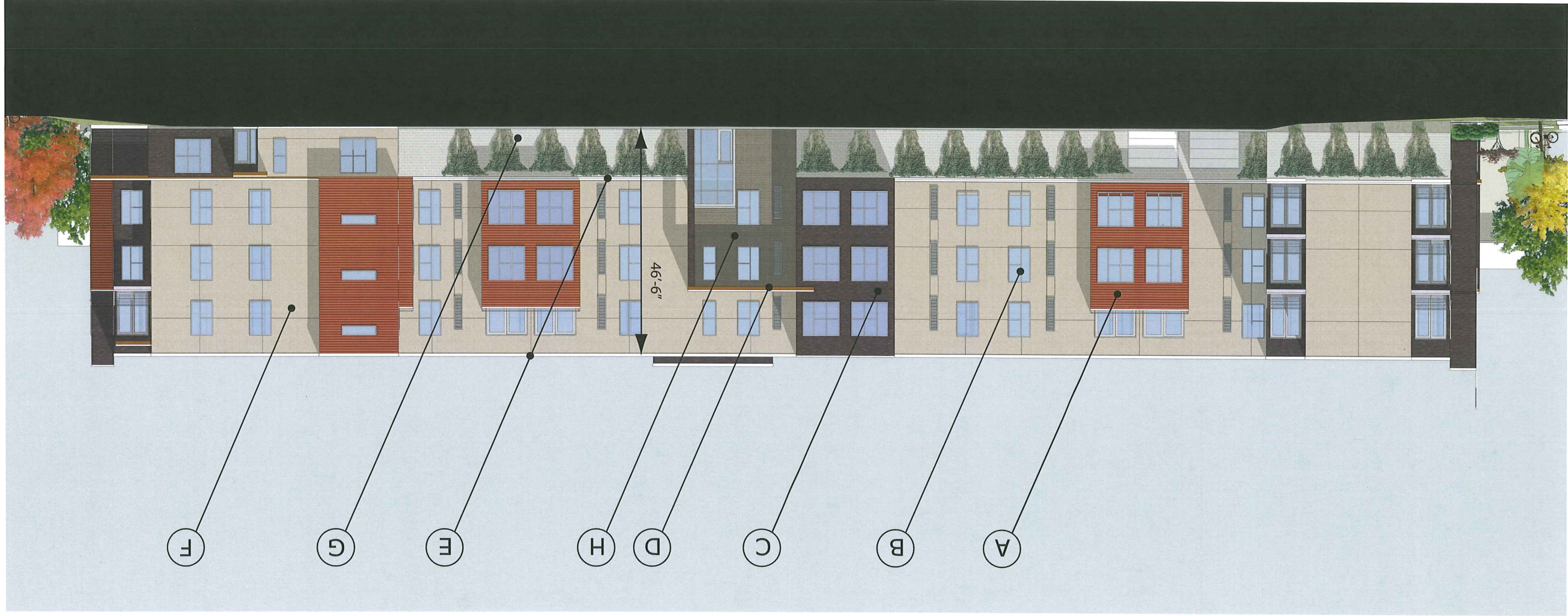


SOUTH ELEVATION

- A = Horizontal architectural metal panel - Terra Cota
- B = Anodized aluminum window and door frames
- C = Brick - Ultra Brown
- D = Cedar fascia and soffit - Honey Oak stain
- E = White coping drip edge
- F = EIFS - Anew Gray
- G = Masonry Block - Grey

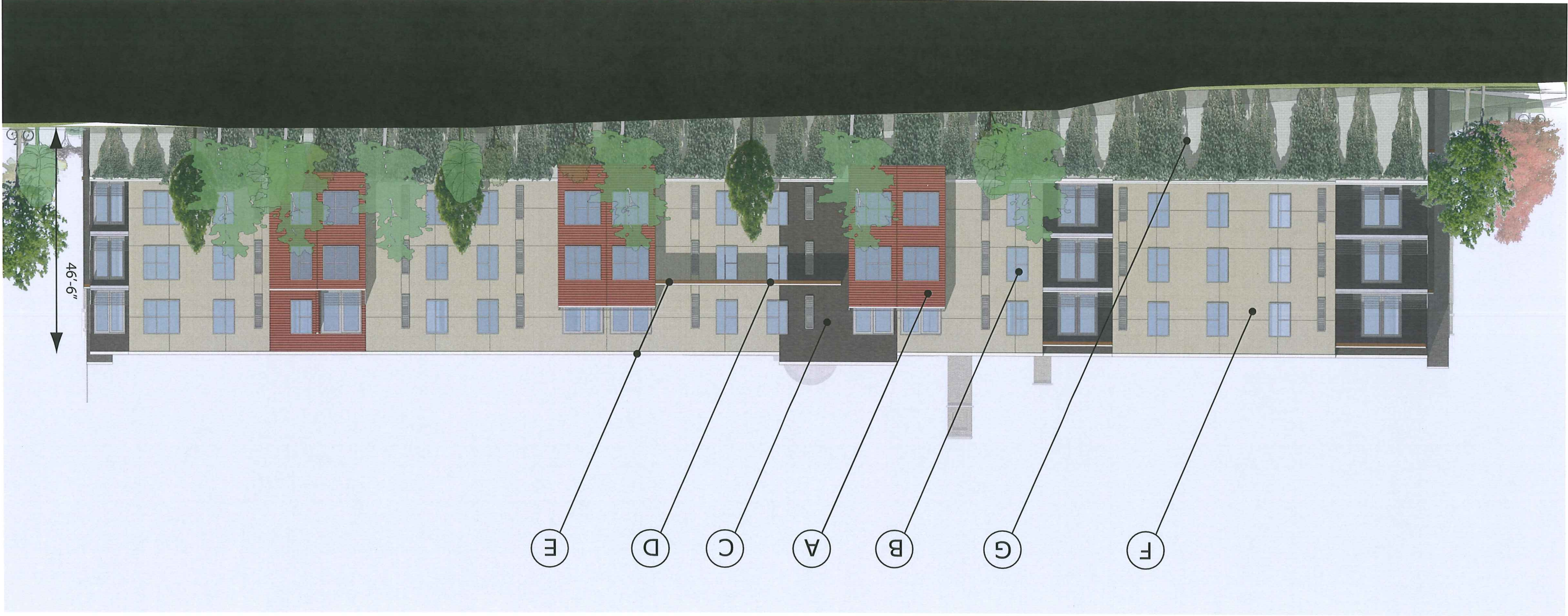
EAST ELEVATION

- A = Horizontal architectural metal panel - Terra Cota
- B = Anodized aluminum window and door frames
- C = Brick - Ultra Brown
- D = Cedar fascia and soffit - Honey Oak stain
- E = White coping drip edge
- F = EIFS - Anew Gray
- G = Masonry Block - Grey
- H = Brick - Dark Brown



the Longfellow

the Longfellow



WEST ELEVATION

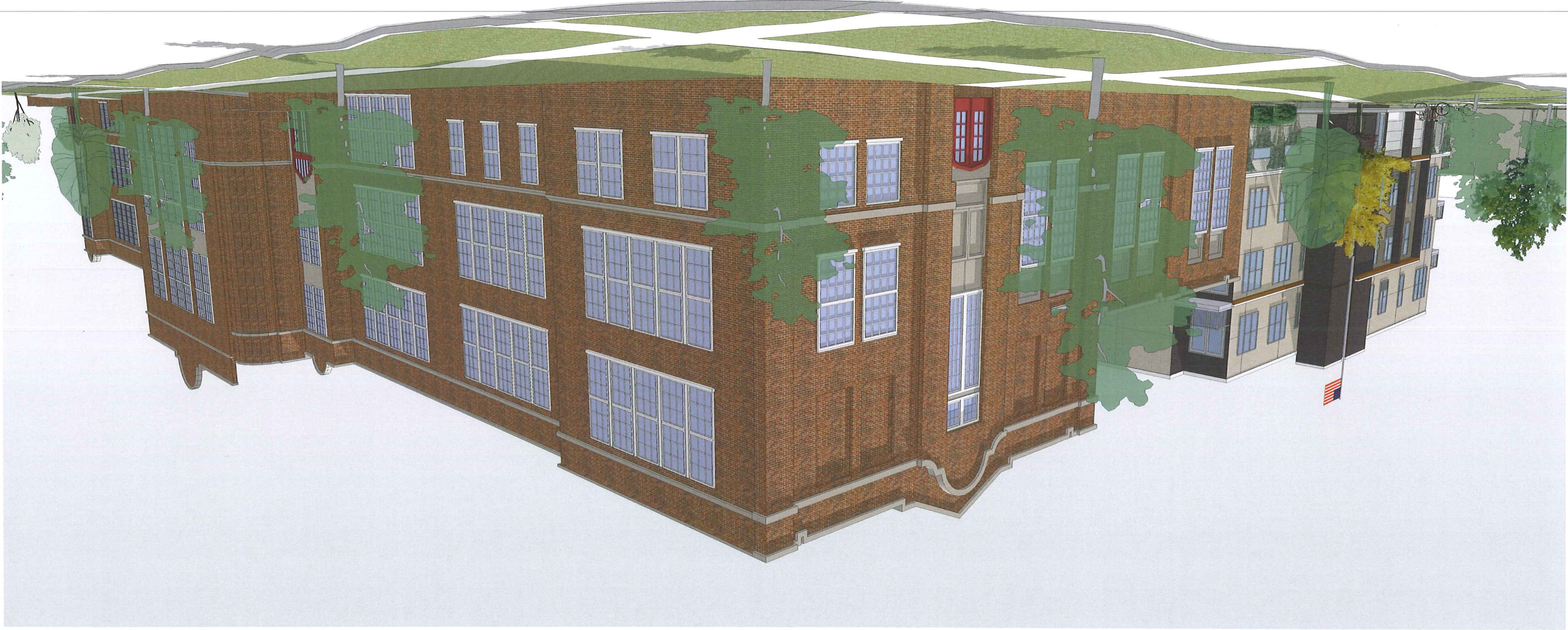
- A = Horizontal architectural metal panel - Terra Cota
- B = Anodized aluminum window and door frames
- C = Brick - Ultra Brown
- D = Cedar fascia and soffit - Honey Oak stain
- E = White coping drip edge
- F = EIFS - Anew Gray
- G = Masonry Block - Grey
- H = Brick - Dark Brown

SOUTH WEST PEDESTRIAN VIEW



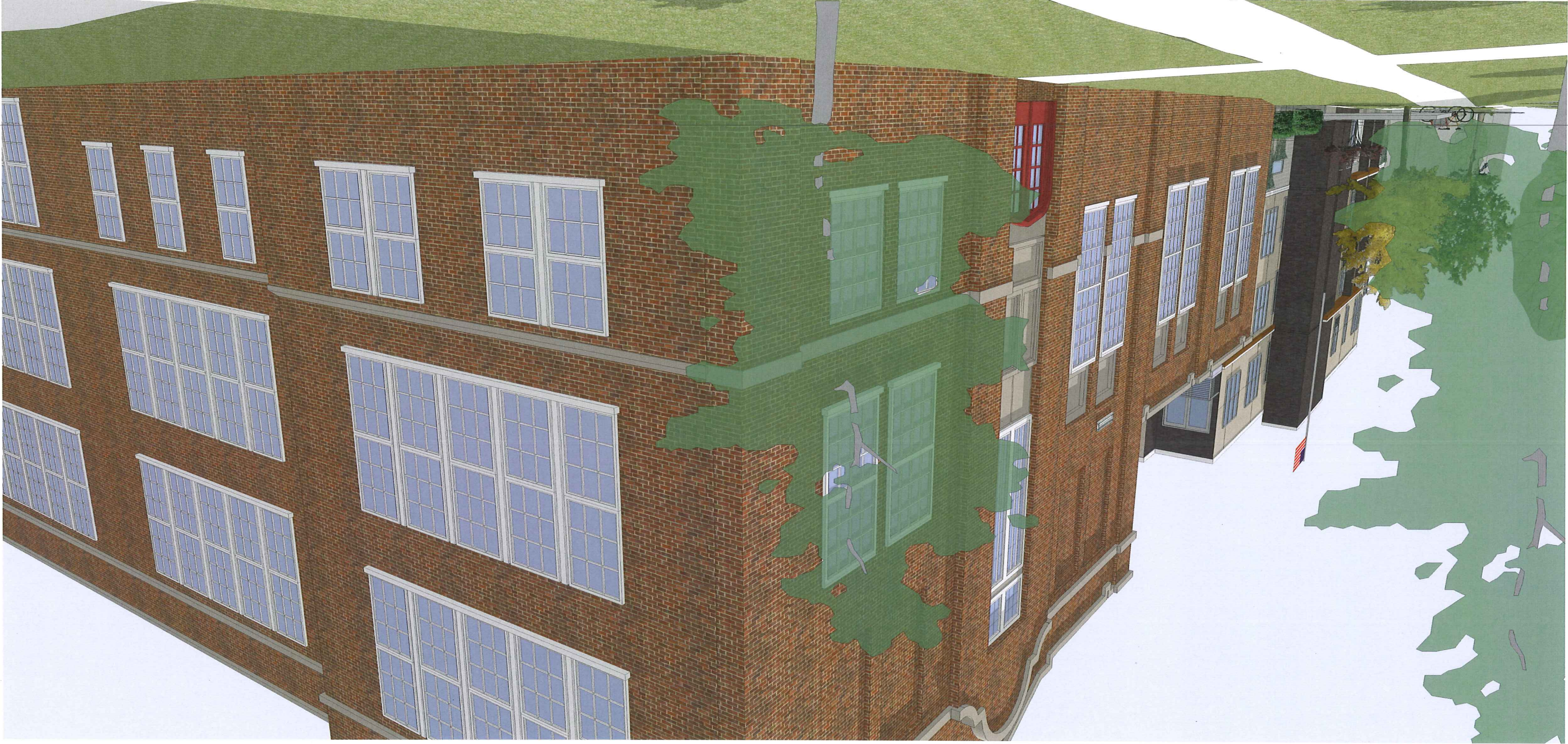
the Longfellow

SOUTH EAST CORNER FROM
ACROSS THE STREET -
PEDESTRIAN VIEW

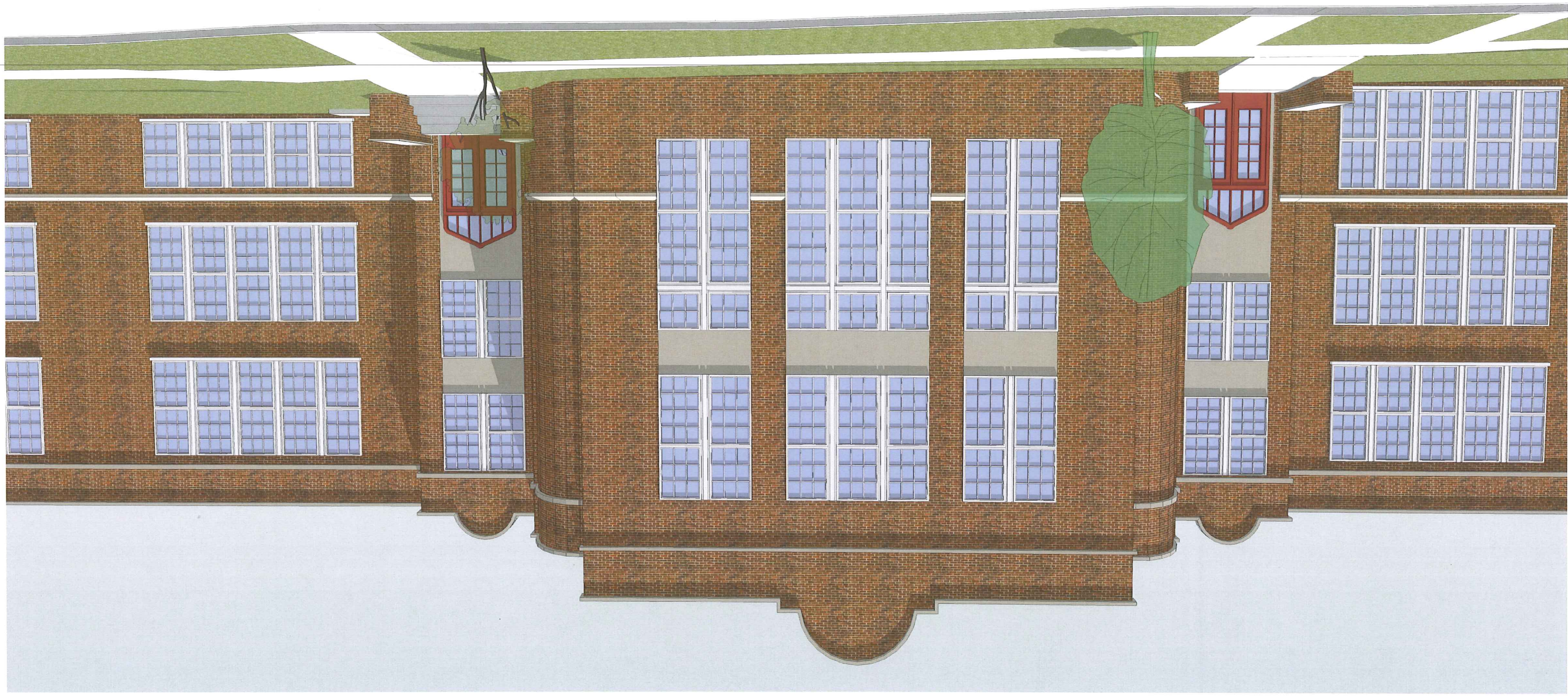


the Longfellow

SOUTH EAST CORNER - PEDESTRIAN VIEW

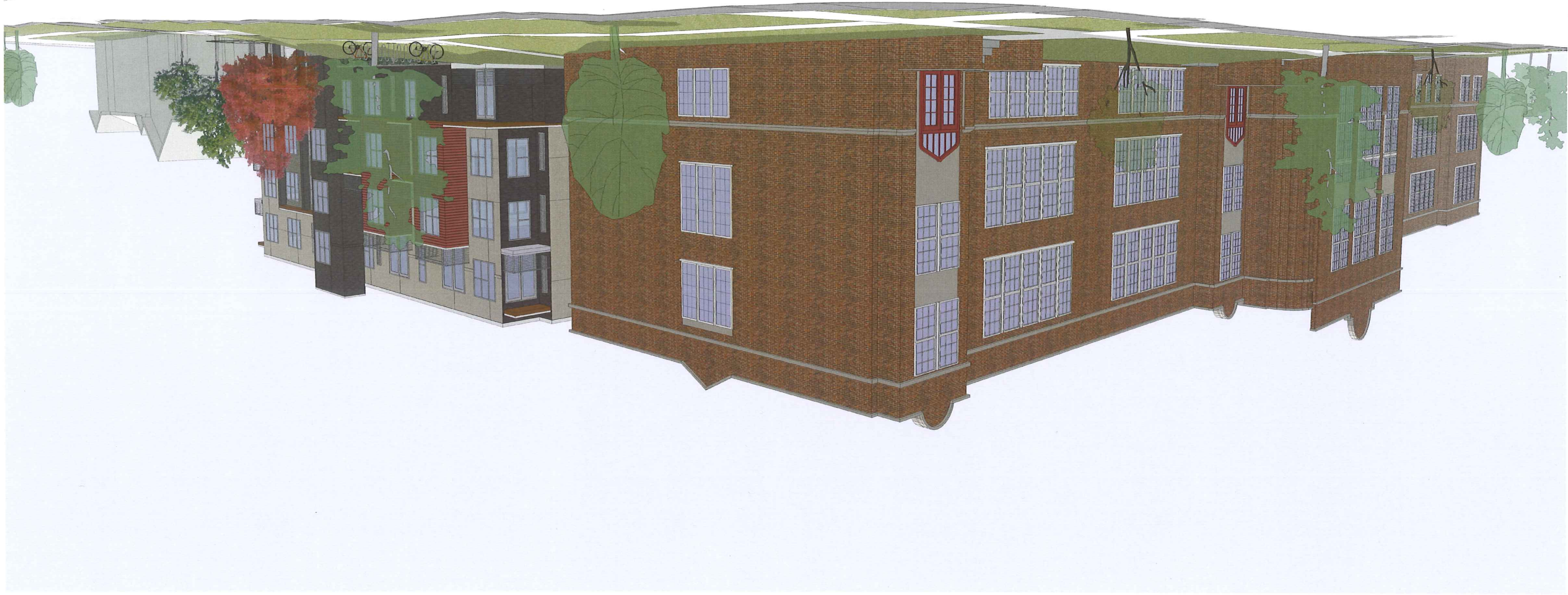


FRONT VIEW OF LONGFELLOW
FROM ACROSS BROOKS STREET
- PEDESTRIAN VIEW



the Longfellow

NORTH EAST CORNER
FROM ACROSS STREET
- PEDESTRIAN VIEW



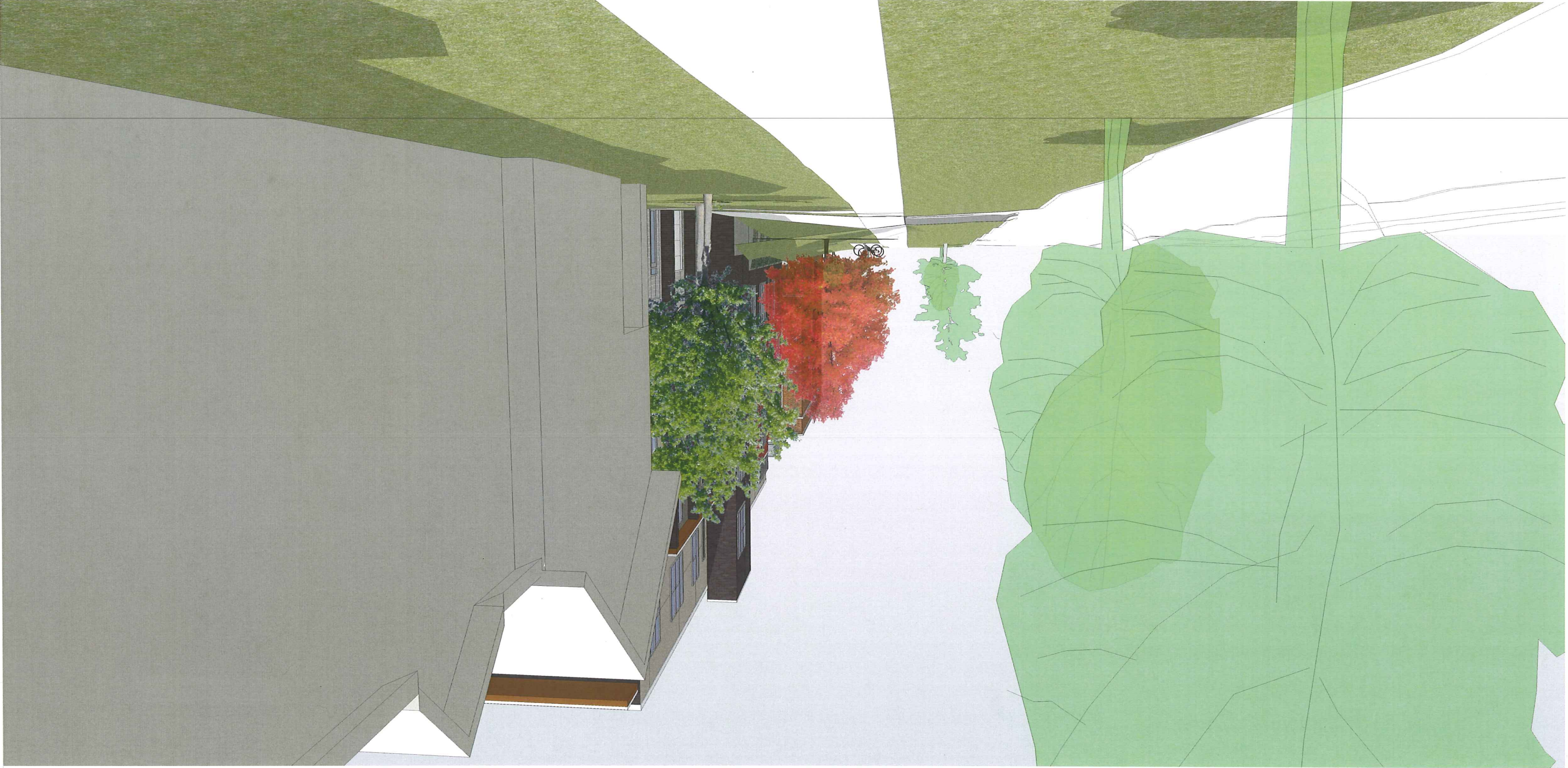
the Longfellow

NORTH EAST CORNER
- PEDESTRIAN VIEW



the Longfellow

NORTH WEST - PEDESTRIAN VIEW



the Longfellow

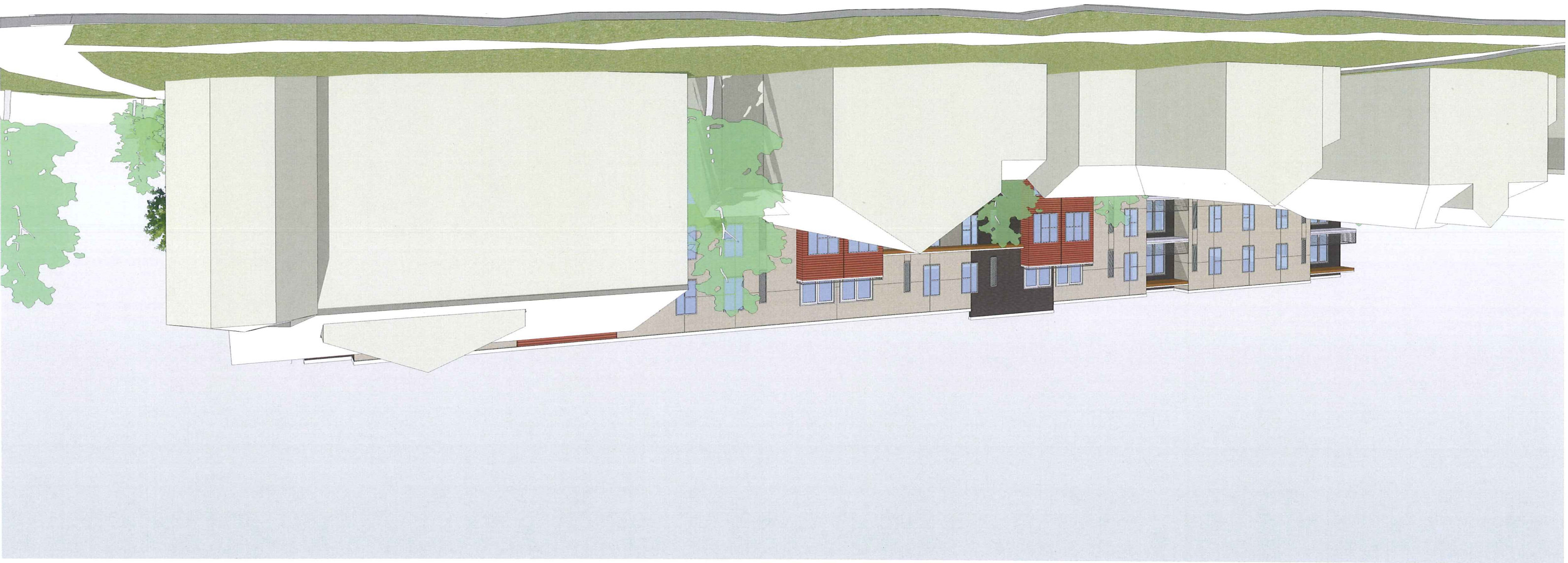


Alexander
Company

WEST FROM ACROSS STREET
- PEDESTRIAN VIEW



WEST FROM ACROSS STREET
- PEDESTRIAN VIEW

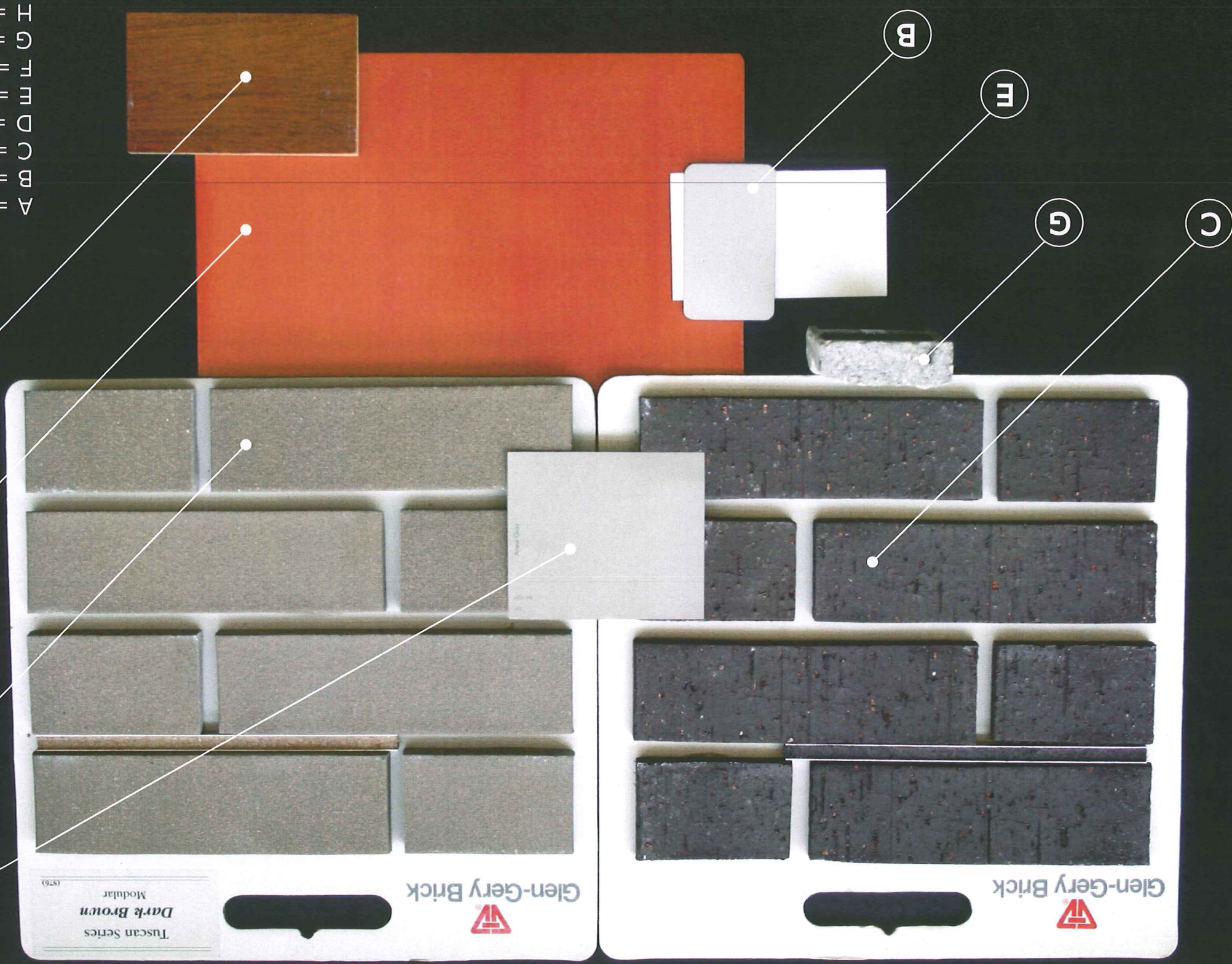


ICONICA

Alexander
Company

the Longfellow

the Longfellow



MATERIAL PALETTE

- A = Horizontal architectural metal panel - Terra Cota
- B = Anodized aluminum window and door frames
- C = Brick - Ultra Brown
- D = Cedar fascia and soffit - Honey Oak stain
- E = White coping drip edge
- F = EIFS - Anew Gray
- G = Masonry Block - Grey
- H = Brick - Dark Brown