

502 Genomic Drive – Oakwood Village CSM & Skilled Nursing Facility
Contract 9064
MUNIS 13762

Developer: Oakwood Village Lutheran Senior Ministries



Summary of Improvements:

- Extend Genomic Drive and sidewalk to north and construct new temporary turnaround
- Construct public utilities as required to serve the development and extended Genomic Drive (sanitary, storm, water)
- Remove the existing temporary Genomic Drive turnaround
- Street lighting on Genomic Drive
- Metro bus facilities on Mineral Point Road



milwaukee 333 East Chicago Street
Milwaukee, Wisconsin 53202
414.271.5350

madison 309 West Johnson Street, Suite 202
Madison, Wisconsin 53703
608.442.2590

denver 1899 Wynkoop Street, Suite 300
Denver, Colorado 80202
303.595.4500

PROJECT INFORMATION

**OAKWOOD VILLAGE
UNIVERSITY WOODS
- SKILLED NURSING
FACILITY**

510 Genomic Drive,
Madison, WI 53705

ISSUANCE AND REVISIONS

DATE	DESCRIPTION
10-30-2020	SCHEMATIC DESIGN
04-16-2021	DESIGN DEVELOPMENT
07-02-2021	50% CD/GMP SET & SITE PLAN PERMIT

KEY PLAN

Mead & Hunt
Mead and Hunt, Inc.
SHEET INFORMATION

**PROGRESS DOCUMENTS
NOT FOR CONSTRUCTION**

These documents reflect progress and intent and may be subject to change, including additional detail. These are not final construction documents and shall not be used for final bidding or construction-related purposes.

PROJECT MANAGER MO
PROJECT NUMBER 120290-01

EXISTING CAMPUS
SITE PLAN

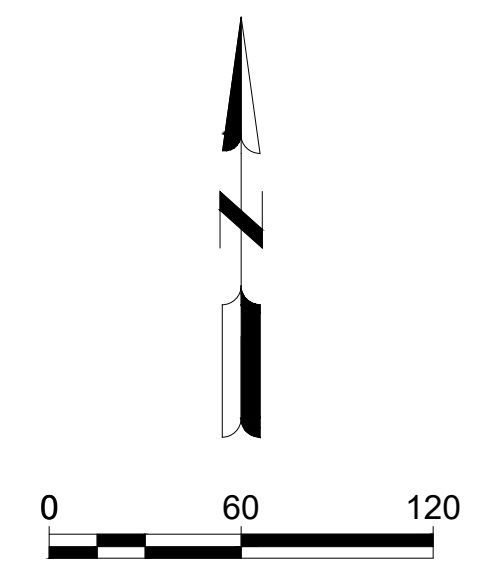
C010

© Epstein Uhen Architects, Inc.



EXISTING PARKING STALLS

PARKING STALLS	296
ADA PARKING STALLS	24
TOTAL STALLS	320





LEGEND:

- BENCHMARK
- BOLLARD
- CONTROL POINT
- CLEANOUT, SANITARY OR STORM
- DOWNSPOUT
- ELECTRICAL METER
- ELECTRICAL / COMMUNICATIONS PEDESTAL
- ELECTRICAL TRANSFORMER BOX
- ELECTRICAL SERVICE PANEL
- ELECTRICAL HANDHOLE/PULLBOX
- FIRE HYDRANT
- FLAGPOLE
- GAS METER
- GAS VALVE
- GUY WIRE
- INLET, CURB
- INLET, ROUND
- IRON PIN
- LIGHT POLE (SINGLE)
- MANHOLE, ELECTRIC
- MANHOLE, SANITARY SEWER
- MANHOLE, STORM SEWER
- MANHOLE, TELECOMMUNICATIONS
- POWER POLE
- SIGN (SINGLE POST)
- SHRUB
- STORM FLARED END SECTION
- TREE, DECIDUOUS
- TREE, CONIFEROUS
- WATER VALVE
- G GAS
- OHE ELECTRIC, OVERHEAD
- E ELECTRIC, UNDERGROUND
- F FENCE
- FOC FIBER OPTIC CABLE
- H HANDRAIL
- P PROPERTY LINE
- SS SANITARY SEWER
- S SWALE
- SD STORM SEWER / CULVERT
- SW SWALE
- T TELEPHONE
- W WATER

EXISTING PARKING STALLS PROJECT AREA

PARKING STALLS	202
ADA PARKING STALLS	5
TOTAL STALLS	207

FIRE HYDRANT TESTING OCTOBER 7, 2020

GAUGE #1	STATIC 60 PSI RESIDUAL 55 PSI
FLOW #2	33 PITOT 2 1/2 HOSE MONSTER 969 GPM
FLOW #3	35 PITOT 2 1/2 HOSE MONSTER 998 GPM

SURVEY DATA:
 COORDINATE SYSTEM WISCORS DANE COUNTY
 VERTICAL DATUM USGS NAVD 88
 SURVEY UNITS US SURVEY FOOT

SURVEY CONTROL DATA

POINT #	DESCRIPTION	ELEVATION	NORTHING	EASTING
BM2456	TOP-NUT	1040.34	477254.674	793590.147
CP11	CHIS X	1032.49	477312.840	793482.551
CP102	NAIL	1082.64	476472.316	793278.887
CP103	PK NAIL	1067.38	476721.279	793922.811
CP104	PK NAIL	1054.40	476949.010	794086.178
CP105	SPIKE	1063.15	476969.951	793779.273
CP106	SPIKE	1062.79	476966.112	793751.141
CP108	NAIL	1055.67	476778.425	793326.935
CP109	PK NAIL	1053.80	476882.103	793637.256
CP1674	NL11	1019.06	477025.470	793210.214



milwaukee 333 East Chicago Street
Milwaukee, Wisconsin 53202
414.271.5350

madison 309 West Johnson Street, Suite 202
Madison, Wisconsin 53703
608.442.2590

denver 1899 Wynkoop Street, Suite 300
Denver, Colorado 80202
303.595.4500

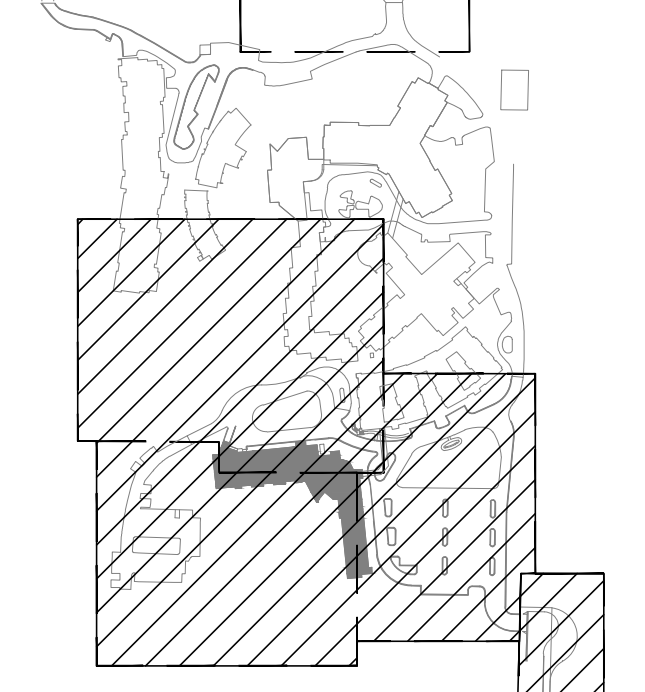
PROJECT INFORMATION
OAKWOOD VILLAGE UNIVERSITY WOODS - SKILLED NURSING FACILITY

510 Genomic Drive, Madison, WI 53705

ISSUANCE AND REVISIONS

DATE	DESCRIPTION
10-30-2020	SCHEMATIC DESIGN
04-16-2021	DESIGN DEVELOPMENT
07-02-2021	50% CD/GMP SET & SITE PLAN PERMIT

KEY PLAN



Mead and Hunt, Inc.
 SHEET INFORMATION

PROGRESS DOCUMENTS NOT FOR CONSTRUCTION
 These documents reflect progress and intent and may be subject to change, including additional detail. These are not final construction documents and shall not be used for final bidding or construction-related purposes.

PROJECT MANAGER MO
 PROJECT NUMBER 120290-01

EXISTING SITE PLAN AND SURVEY CONTROL

C021



milwaukee 333 East Chicago Street
Milwaukee, Wisconsin 53202
414.271.5350

madison 309 West Johnson Street, Suite 202
Madison, Wisconsin 53703
608.442.2590

denver 1899 Wynkoop Street, Suite 300
Denver, Colorado 80202
303.595.4500

PROJECT INFORMATION

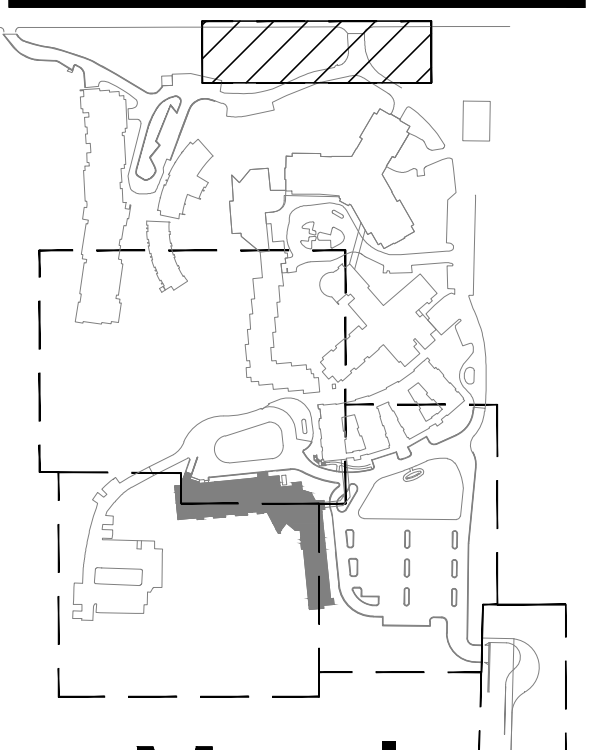
**OAKWOOD VILLAGE
UNIVERSITY WOODS
- SKILLED NURSING
FACILITY**

510 Genomic Drive,
Madison, WI 53705

ISSUANCE AND REVISIONS

DATE	DESCRIPTION
10-30-2020	SCHEMATIC DESIGN
04-16-2021	DESIGN DEVELOPMENT
07-02-2021	50% CD/GMP SET & SITE PLAN PERMIT

KEY PLAN



Mead & Hunt
Mead and Hunt, Inc.
SHEET INFORMATION

**PROGRESS DOCUMENTS
NOT FOR CONSTRUCTION**

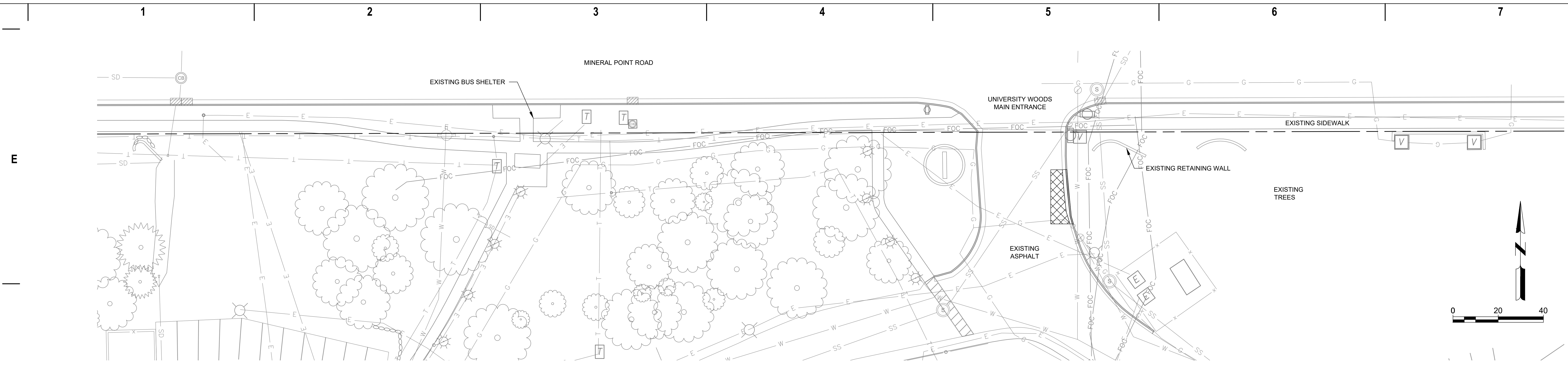
These documents reflect progress and intent and may be subject to change, including additional detail. These are not final construction documents and shall not be used for final bidding or construction-related purposes.

PROJECT MANAGER MO
PROJECT NUMBER 120290-01

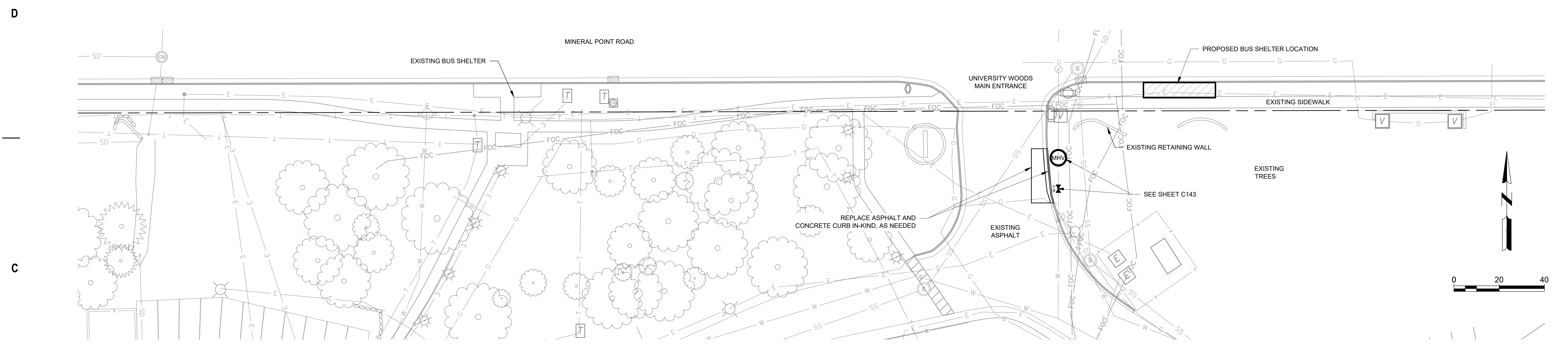
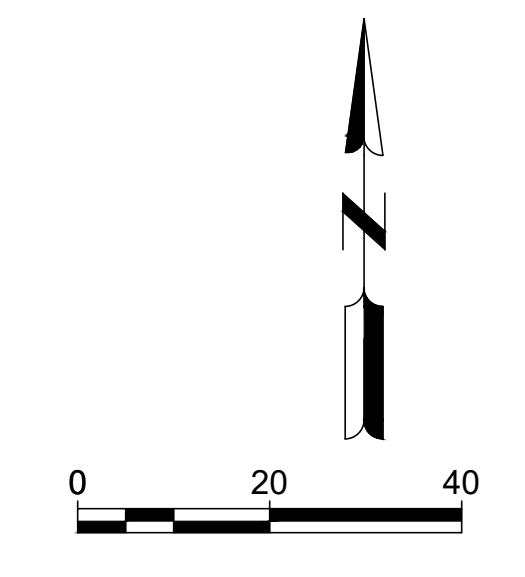
SITE PLAN - BUS
SHELTER

C104

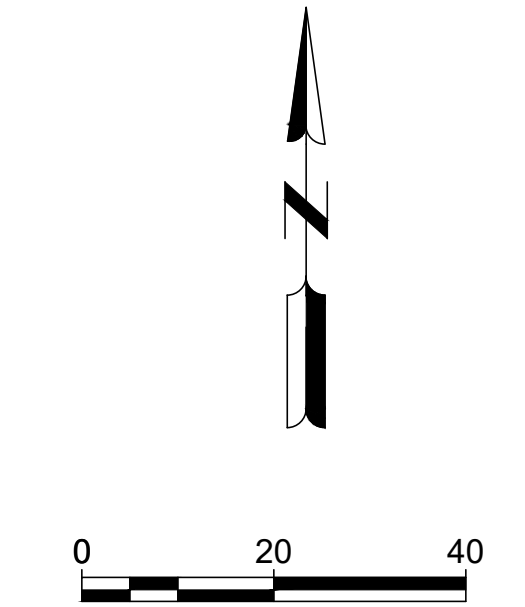
© Epstein Uhen Architects, Inc.



EXISTING SITE AND REMOVALS PLAN



SITE PLAN





milwaukee 333 East Chicago Street
Milwaukee, Wisconsin 53202
414.271.5350

madison 309 West Johnson Street, Suite 202
Madison, Wisconsin 53703
608.442.2590

denver 1899 Wynkoop Street, Suite 300
Denver, Colorado 80202
303.595.4500

PROJECT INFORMATION

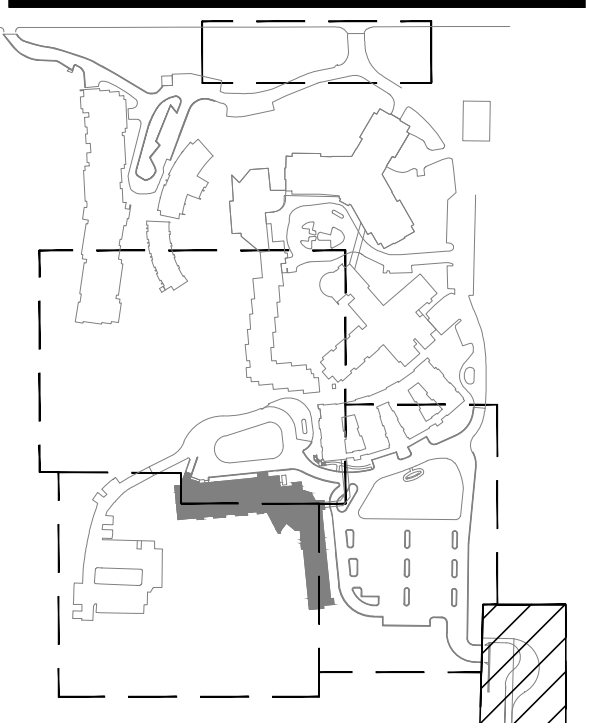
**OAKWOOD VILLAGE
UNIVERSITY WOODS
- SKILLED NURSING
FACILITY**

510 Genomic Drive,
Madison, WI 53705

ISSUANCE AND REVISIONS

DATE	DESCRIPTION
10-30-2020	SCHEMATIC DESIGN
04-16-2021	DESIGN DEVELOPMENT
07-02-2021	50% CD/GMP SET & SITE PLAN PERMIT

KEY PLAN



Mead & Hunt
Mead and Hunt, Inc.
SHEET INFORMATION

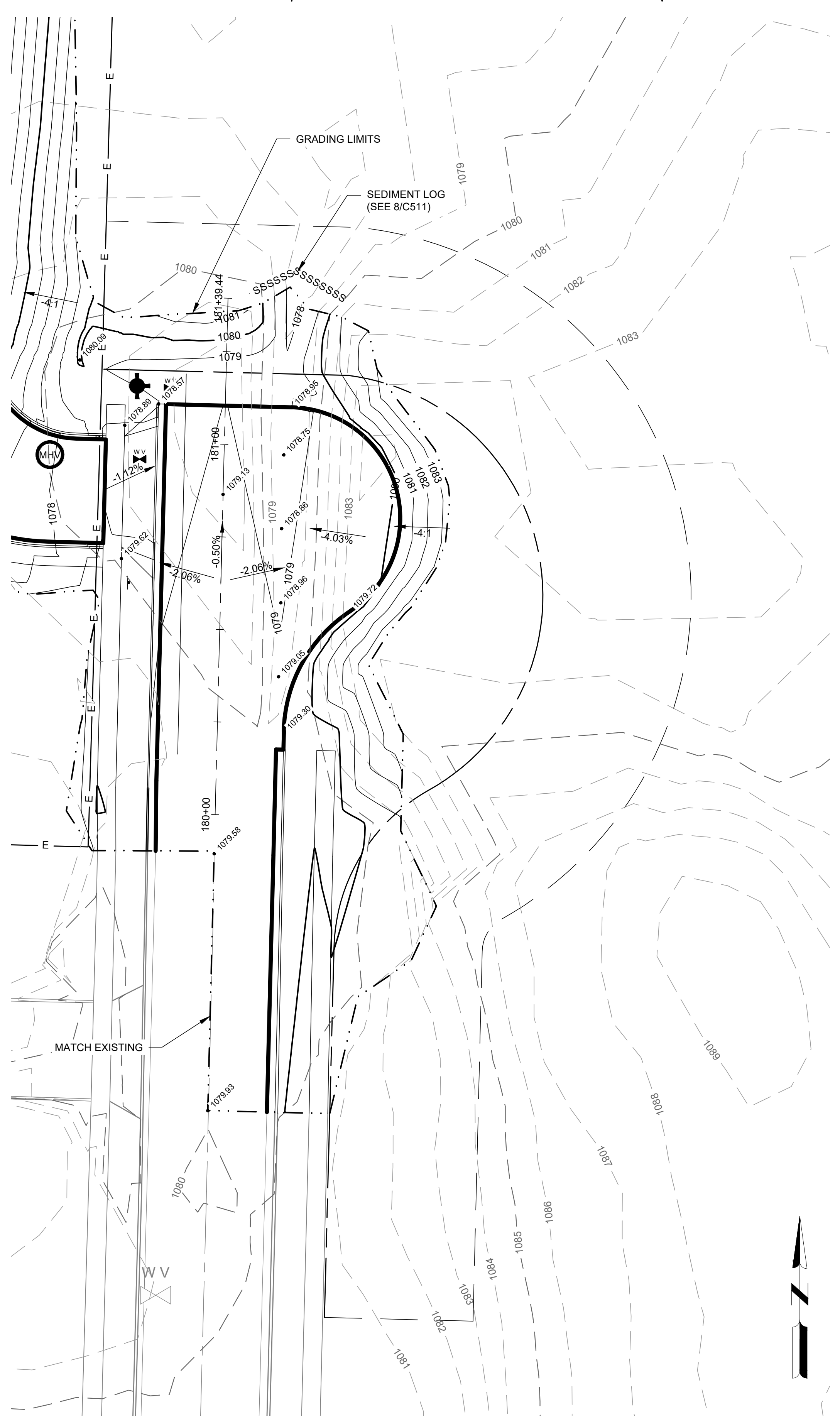
**PROGRESS DOCUMENTS
NOT FOR CONSTRUCTION**

These documents reflect progress and intent and may be subject to change, including additional detail. These are not final construction documents and shall not be used for final bidding or construction-related purposes.

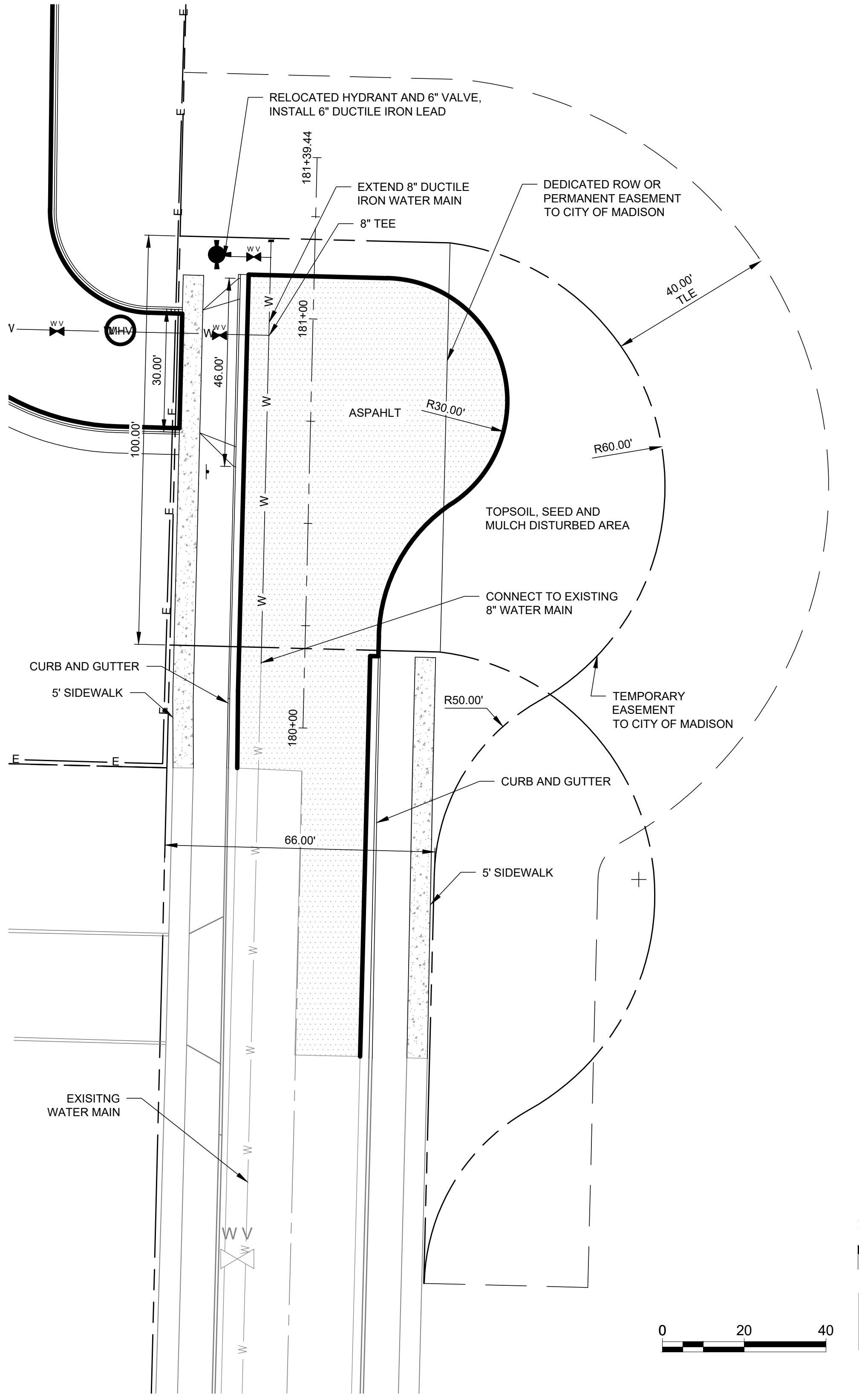
PROJECT MANAGER MO
PROJECT NUMBER 120290-01
**GENOMIC DRIVE
EXTENSION SITE
AND GRADING PLAN**

C111

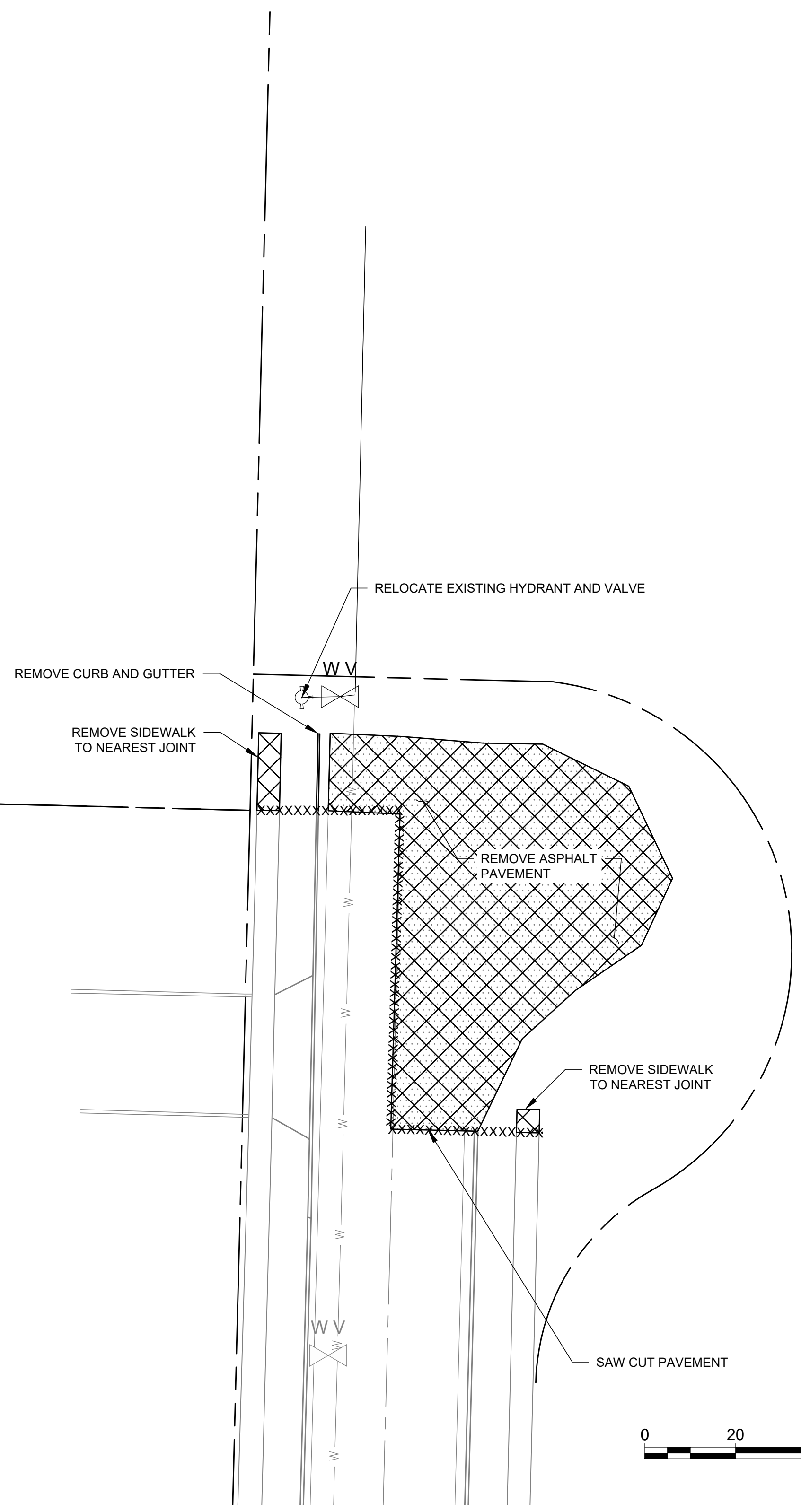
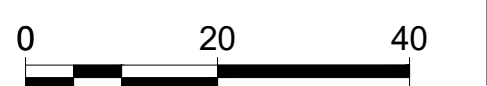
© Epstein Uhen Architects, Inc.



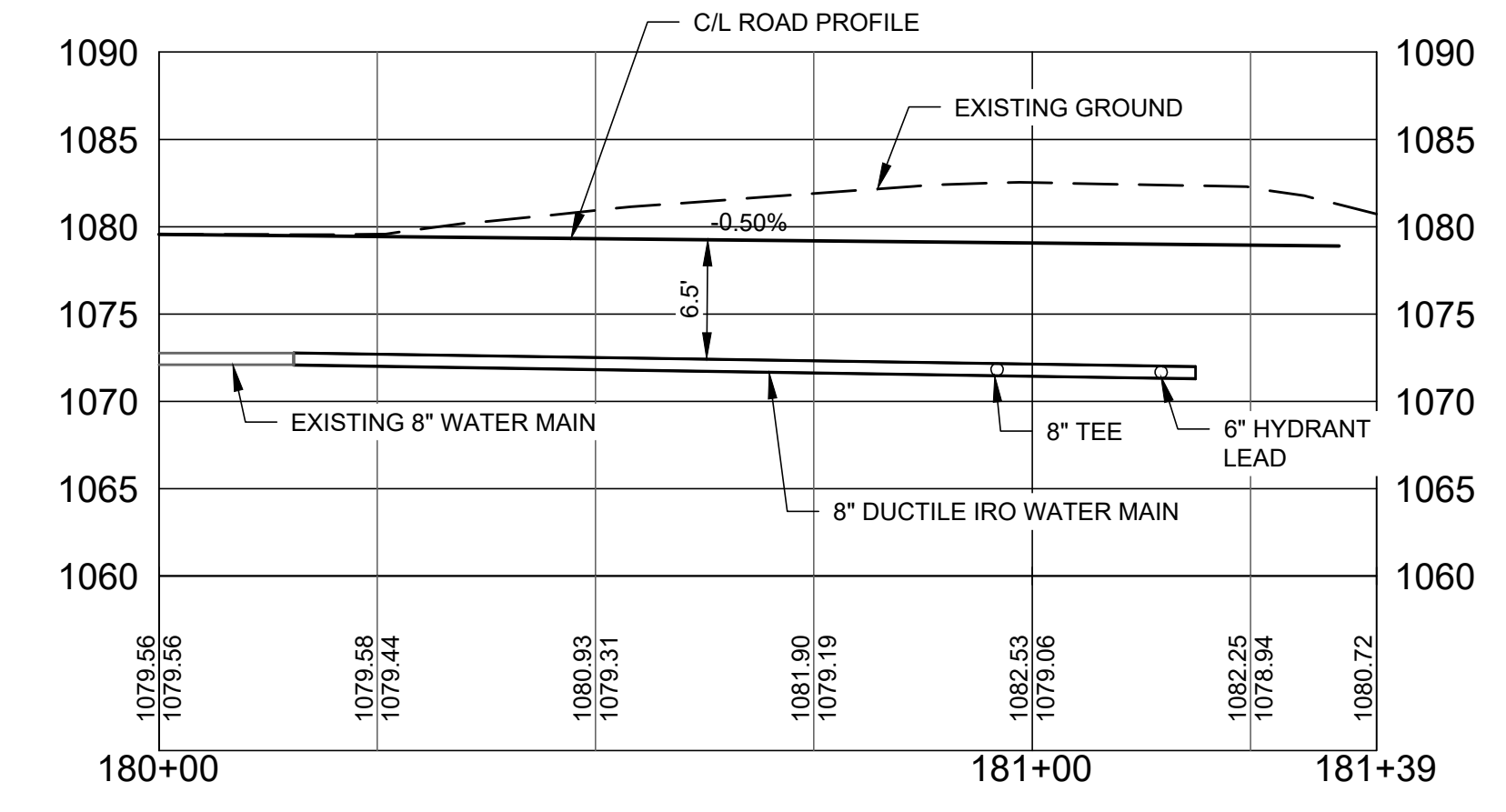
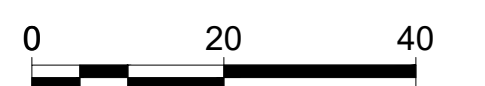
GRADING PLAN



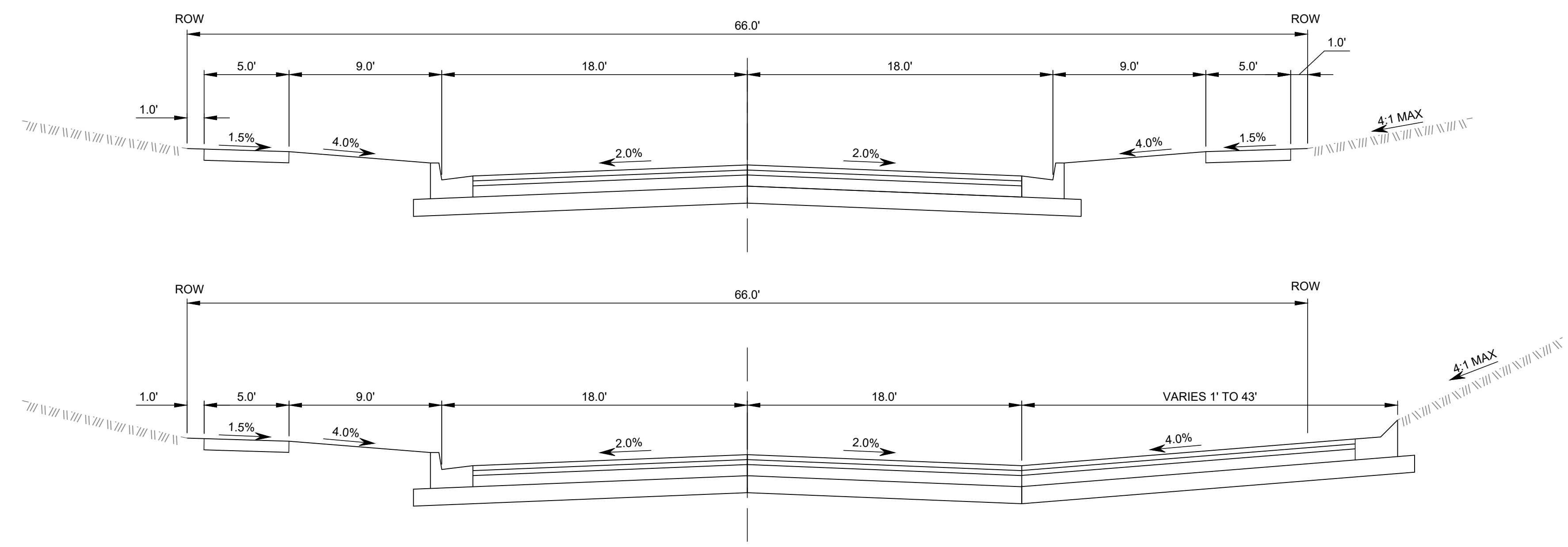
ROAD EXTENSION PLAN



REMOVALS



C/L ROAD PROFILE



TYPICAL SECTIONS

E

D

C

B

A

E

D

C

B

A

1

2

3

4

5

6

7



milwaukee 333 East Chicago Street
Milwaukee, Wisconsin 53202
414.271.5350

madison 309 West Johnson Street, Suite 202
Madison, Wisconsin 53703
608.442.2590

denver 1899 Wynkoop Street, Suite 300
Denver, Colorado 80202
303.595.4500

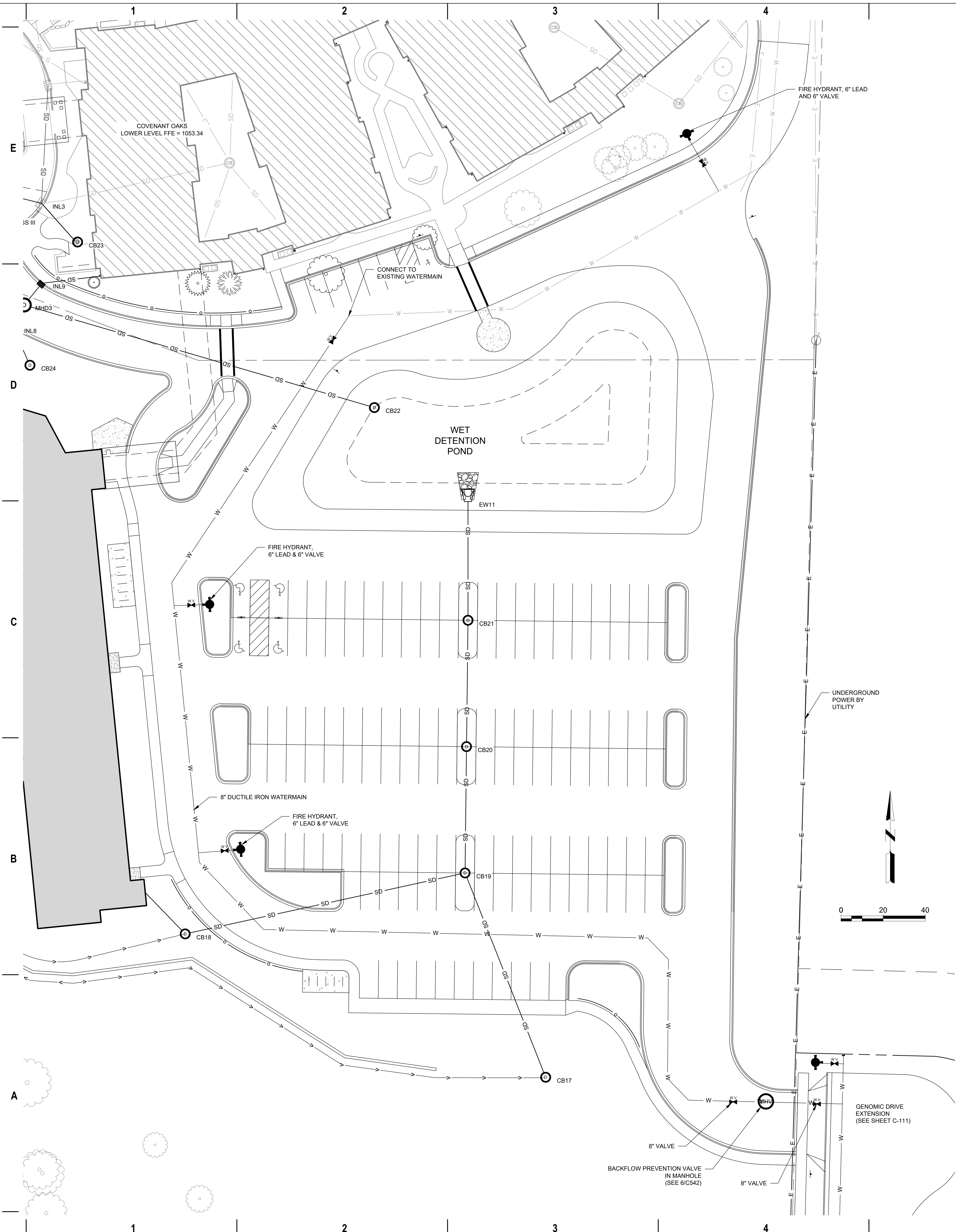
PROJECT INFORMATION

**OAKWOOD VILLAGE
UNIVERSITY WOODS
- SKILLED NURSING
FACILITY**

510 Genomic Drive,
Madison, WI 53705

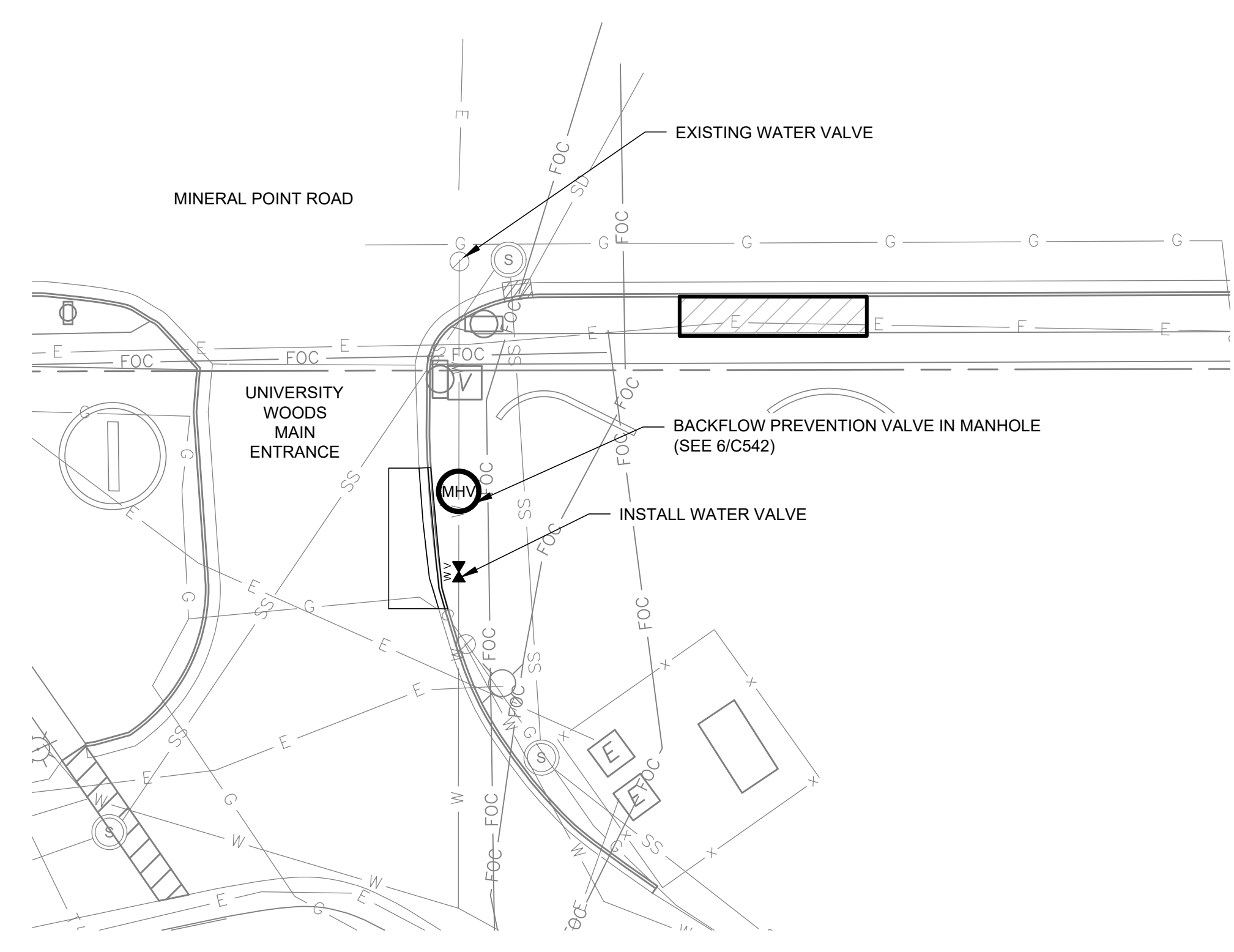
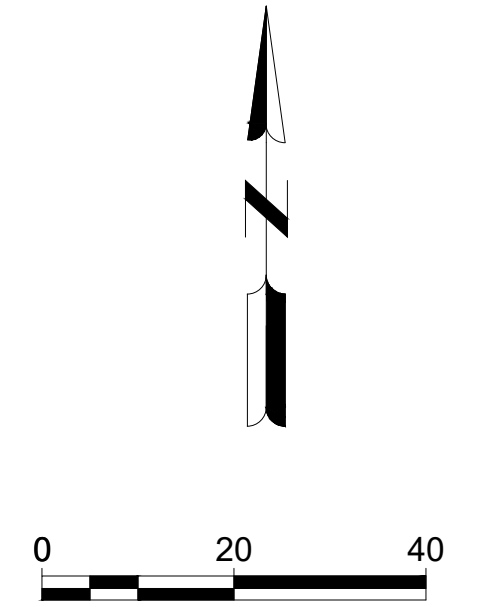
ISSUANCE AND REVISIONS

DATE	DESCRIPTION
10-30-2020	SCHEMATIC DESIGN
04-16-2021	DESIGN DEVELOPMENT
07-02-2021	50% CD/GMP SET & SITE PLAN PERMIT

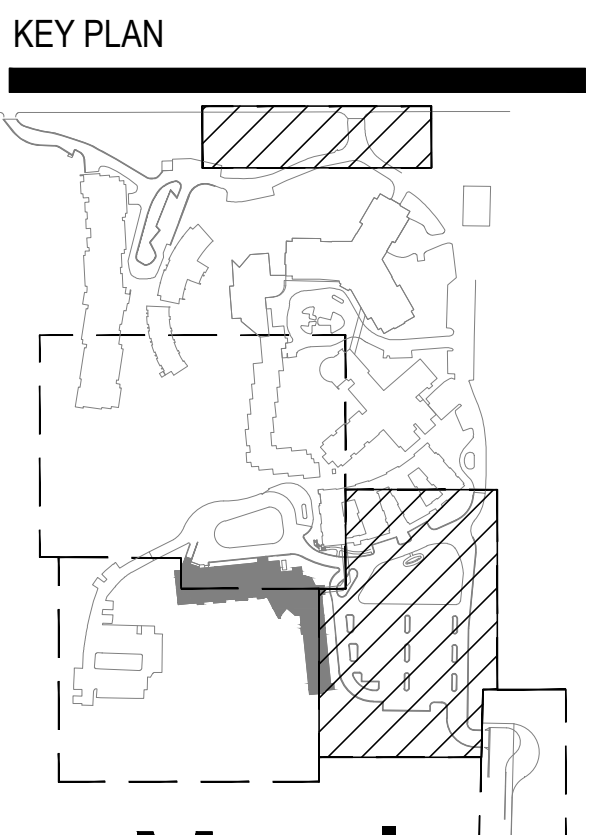


LEGEND:

- TRANS ELECTRIC TRANSFORMER BOX
- ELECTRIC PEDESTAL BOX
- FIRE HYDRANT
- GAS VALVE
- SANITARY SEWER MANHOLE
- STORM INLET, ROUND
- STORM SEWER MANHOLE
- VALVE MANHOLE
- WATER VALVE
- G GAS
- E ELECTRIC, UNDERGROUND
- FOC FIBER OPTIC CABLE
- SS SANITARY SEWER
- SD STORM SEWER / CULVERT
- W WATER



SITE PLAN - MINERAL POINT FRONTAGE



Mead & Hunt
Mead and Hunt, Inc.
SHEET INFORMATION

**PROGRESS DOCUMENTS
NOT FOR CONSTRUCTION**

These documents reflect progress and intent and may be subject to change, including additional detail. These are not final construction documents and shall not be used for final bidding or construction-related purposes.

PROJECT MANAGER MO
PROJECT NUMBER 120290-01

SITE UTILITIES PLAN

C143