

Application for Change of Licensed Premise
(No Fee Required)

07 JUL -3 PM 3:31

Applicants must appear before the ALRC. Detailed floor plans must accompany this form, or request will not be presented to the committee.

Please contact City Zoning (Municipal Building LL-100, 266-4560). A Conditional Use Permit may be required. There is a fee for the Conditional Use Permit.

Corporate/Owner Name Alfredo's Enoteca LLC

DBA EnoVino Wine Bar & Bistro

Address 601 Junction Rd., Madison

Agent Planning Design Build, Inc.

Capacity 203 % Alcohol 40 % Food 60

Description of Expansion Plans:

Interior alteration of 1,609 s.f., removing 1 hour rated wall between EnoVino and former Maggie Moo's space to enlarge EnoVino. Alteration will enlarge the bar, add a lounge with fireplace, convert 2 existing restrooms to additional seating, add wine storage, a hostess station and coat rack, and reconfigure existing prep kitchen.

Signature of Applicant [Signature] Date 7/2/07

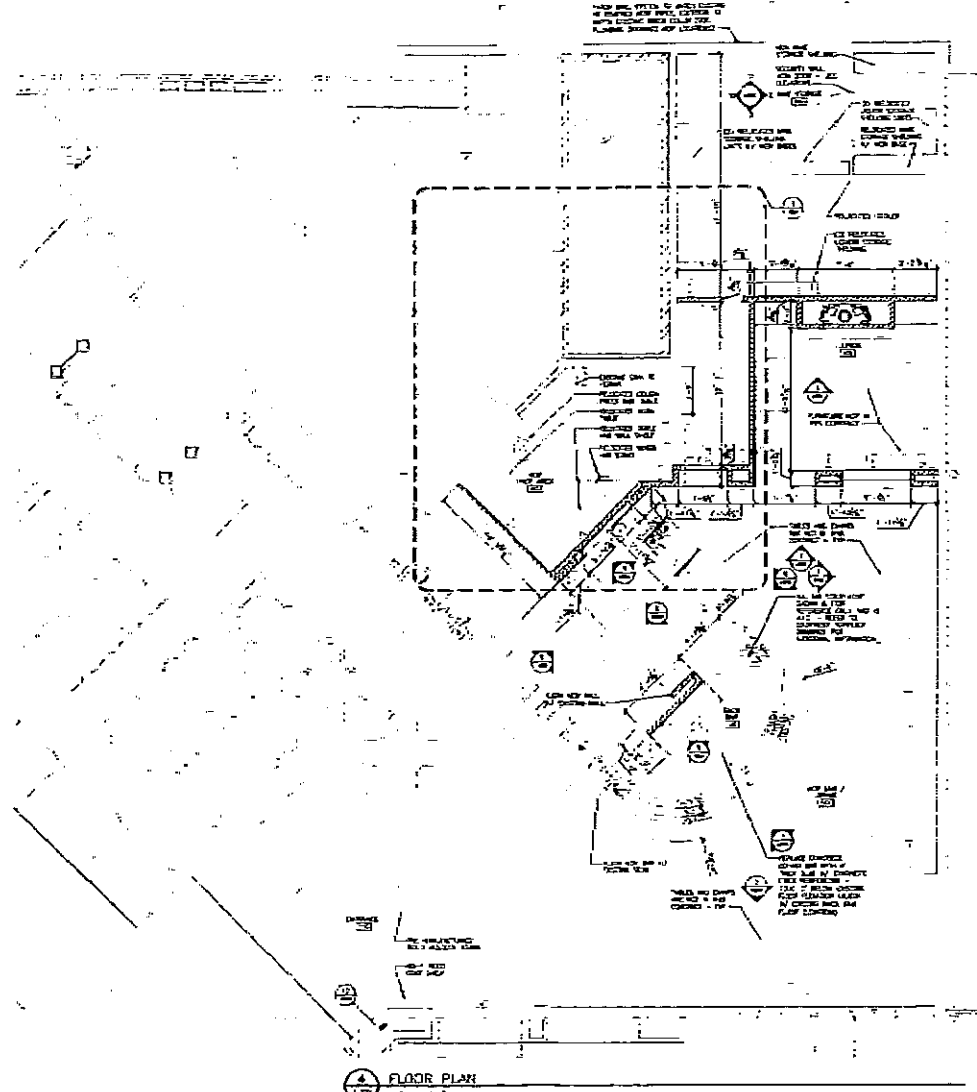
To be considered at ALRC meeting of 7/18/07

and Common Council Meeting of 8/7/07

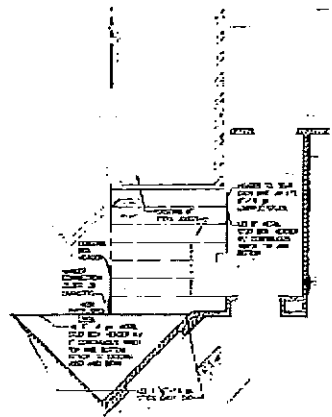
License Type Class B License # 069591 Legistar # District 9

Approved Disapproved

Routed: City Zoning
 Building Inspection Unit - Permit Counter
 Madison Police Department - Sector 128
 Alderperson Paul Skidmore (9)



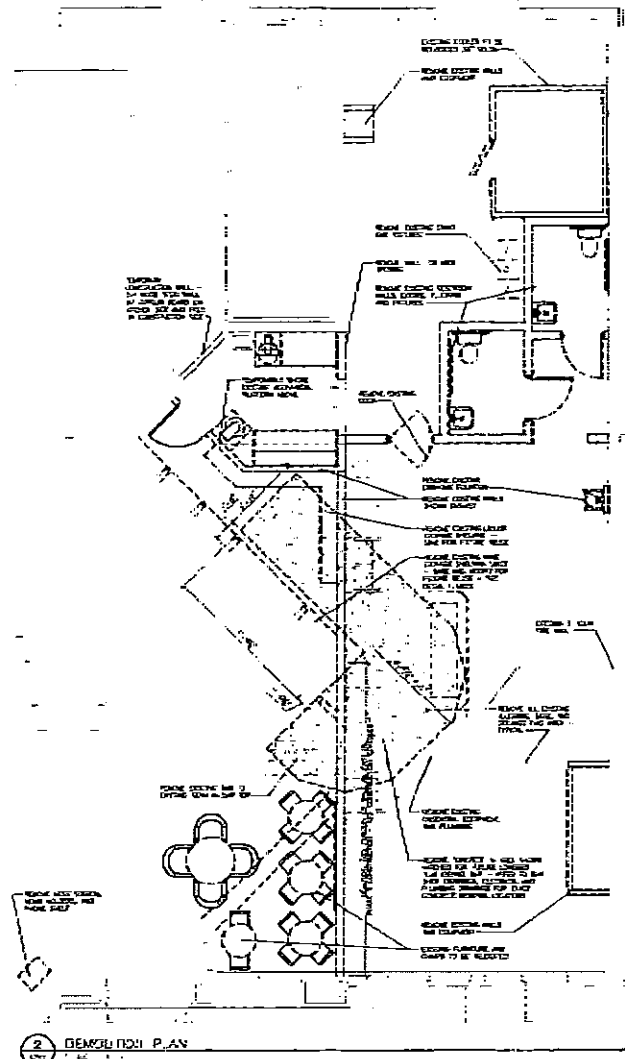
1 FLOOR PLAN



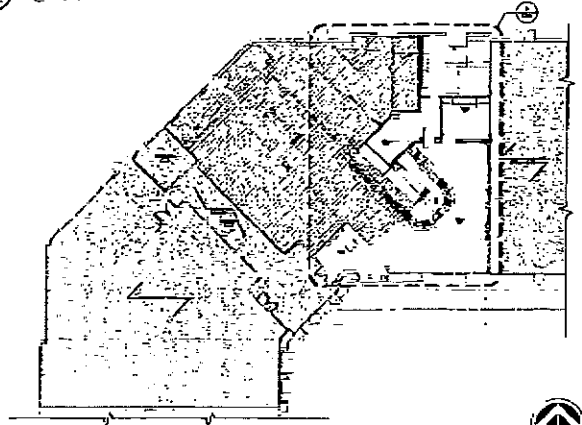
3 ENLARGED MECHANICAL PLATFORM

- EXISTING WALL TO BE DEMOLISHED
- EXISTING WALL TO REMAIN
- EXISTING WALL TO BE RECONSTRUCTED
- EXISTING WALL TO BE RECONSTRUCTED WITH 12" CMU AND 2" GYPSUM BOARD
- EXISTING WALL TO BE RECONSTRUCTED WITH 12" CMU AND 2" GYPSUM BOARD AND 1/2" GYPSUM BOARD

NOTES:
 1. SEE SHEET 01-1 FOR EXISTING AND PROPOSED DETAILS.
 2. PROVIDE ALL MECHANICAL EQUIPMENT WITH 1/2" GYPSUM BOARD AND 1/2" GYPSUM BOARD.
 3. PROVIDE ALL MECHANICAL EQUIPMENT WITH 1/2" GYPSUM BOARD AND 1/2" GYPSUM BOARD.



2 DEMOLITION PLAN



4 KEY PLAN

BLANK
 PROJECT: 07-03-07 15:01 FROM-Design Build, Inc. 608-836-5818

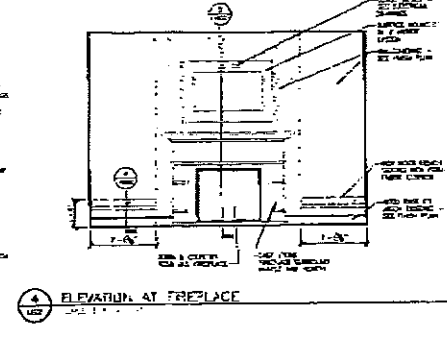
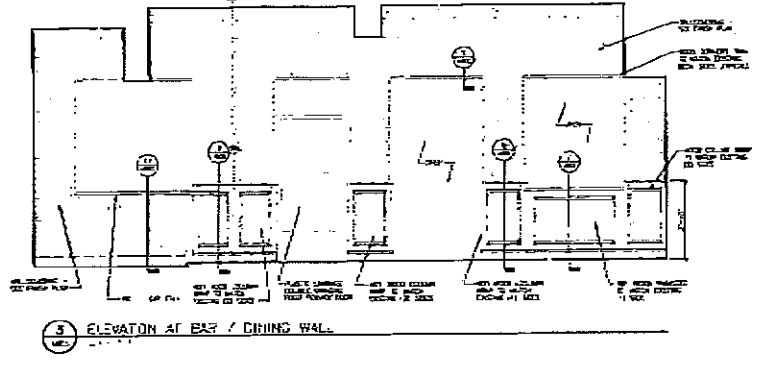
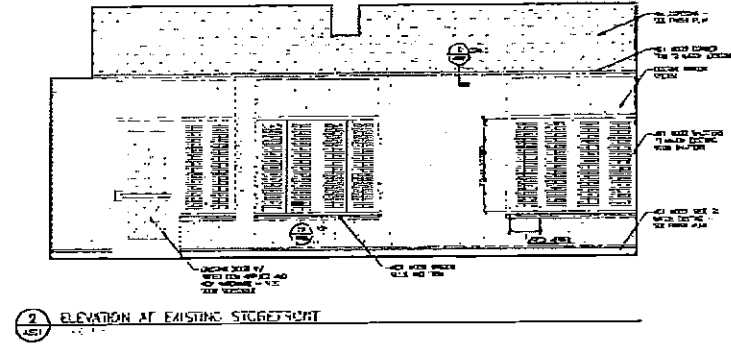
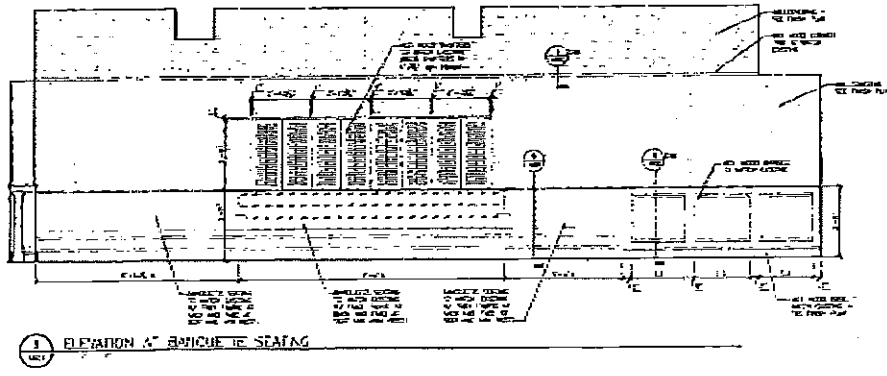
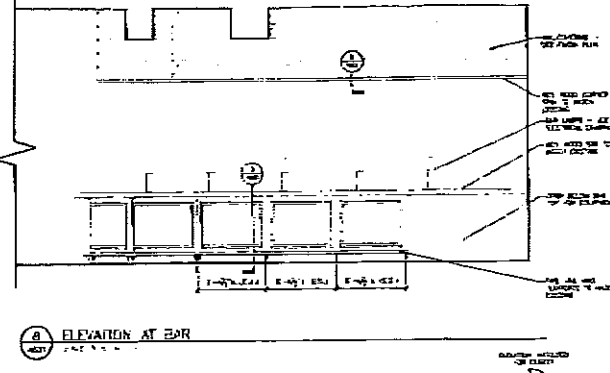
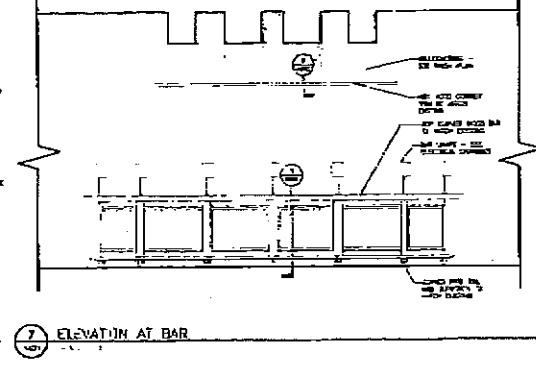
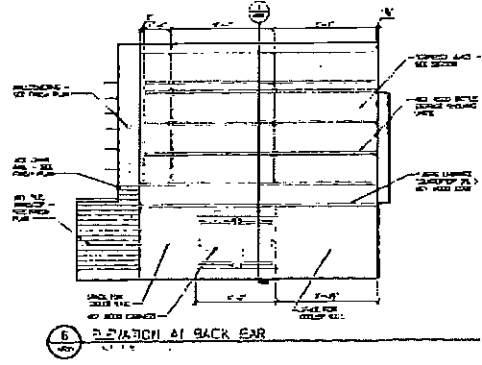
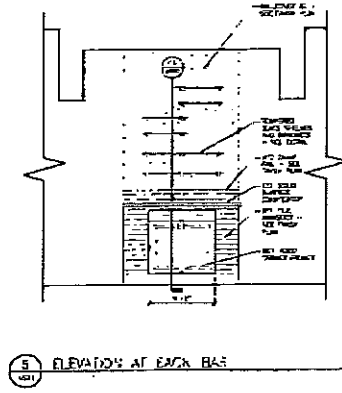
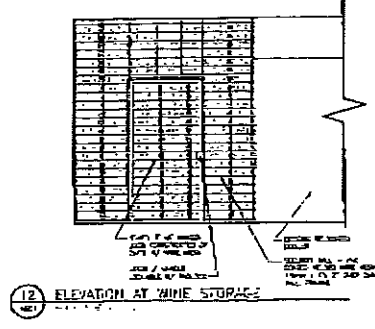
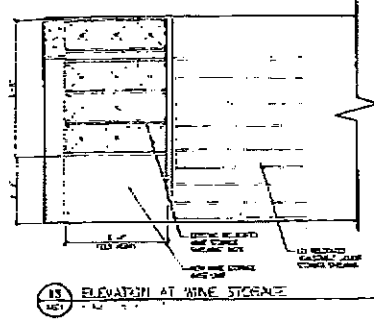
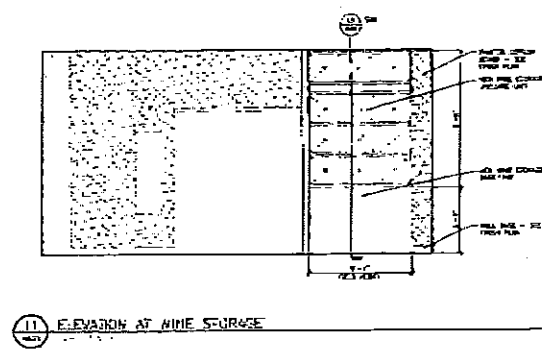
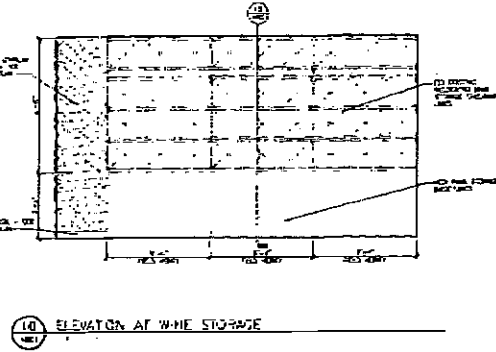
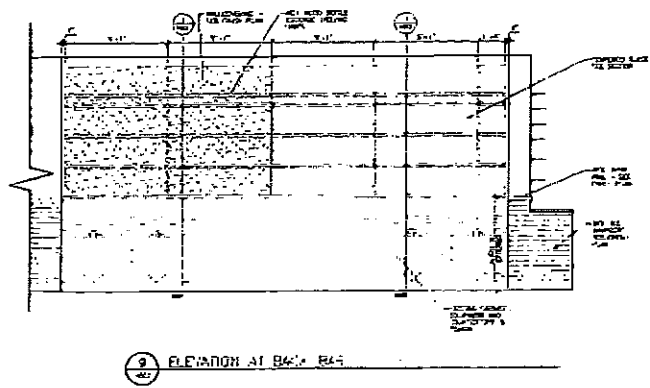
ENOVINO EXPANSION
 PERFORMING PLACE - 601 JUNCTION ROAD
 MADISON, WI 53711

ALFREDO'S ENOTECA
 PERFORMING PLACE - 601 JUNCTION ROAD
 MADISON, WI 53711

DATE: 07/03/07 15:01 FROM-Design Build, Inc. 608-836-5818

PROJECT NO: 07-03-07
 SHEET NUMBER
A201





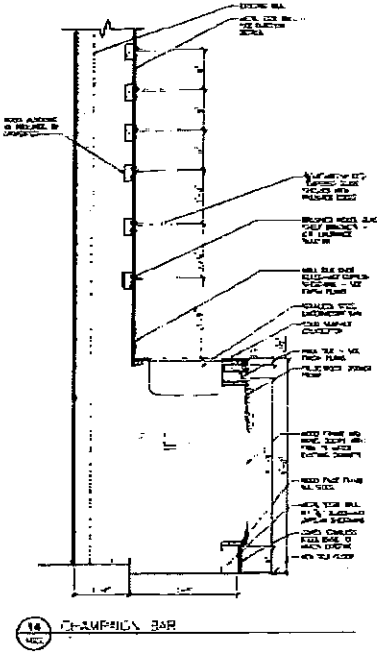
PLANNING
 PLANNING CONSULTANTS, INC.
 1000 Planning Plaza, Suite 100
 Madison, WI 53703
 (608) 261-1111
 www.planninginc.com

ENOVINO EXPANSION
 PORTER ROAD PLAZA, ART JUNCTION ROAD
 MADISON, WI 53717

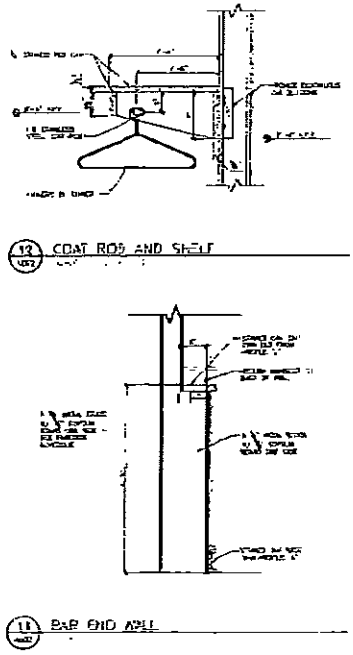
ALFREDO'S ENOTECA
 PORTER ROAD PLAZA, ART JUNCTION ROAD
 MADISON, WI 53717

DATE: 07-09-07
 BY: [Signature]
 CHECKED BY: [Signature]

A601

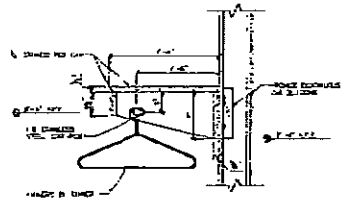


14 BAR END WALL

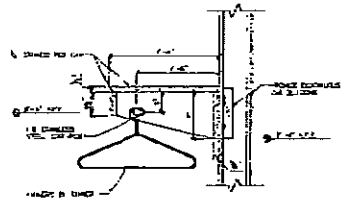


11 BAR END WALL

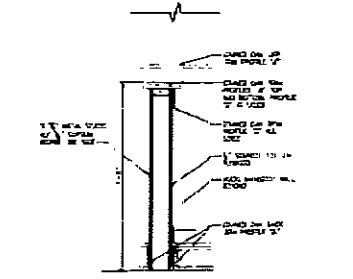
12 COAT ROD AND SHELF



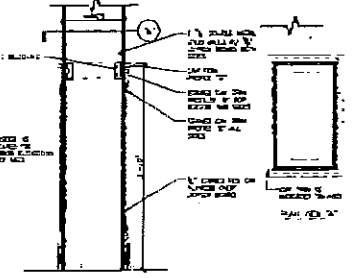
13 WINE STORAGE SHELVING



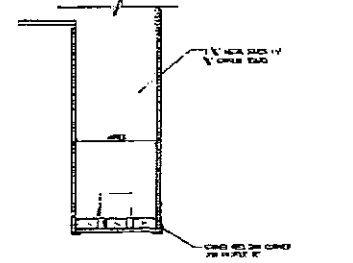
7 LOUNGE LOW WALL



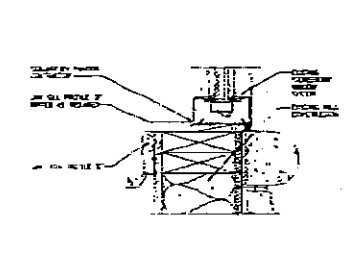
8 WOOD WAINSCOT



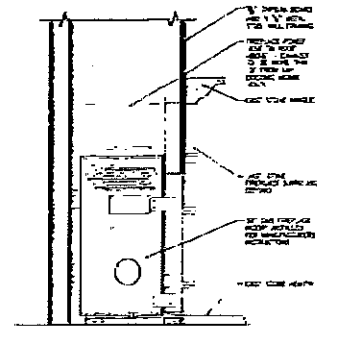
9 SOFFIT WITH WOOD CLEANER TRIM



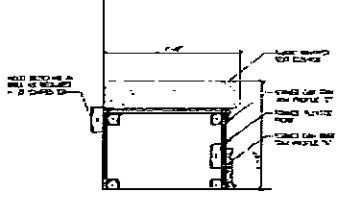
10 WINDOW SILL



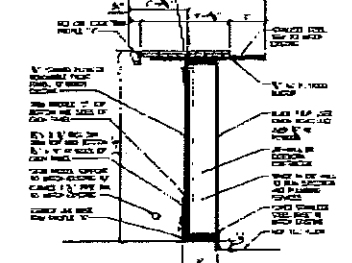
3 FIRE PLACE



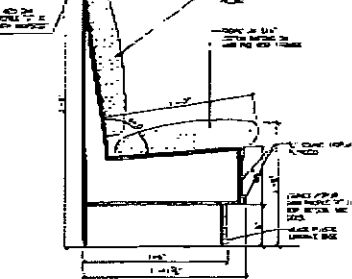
4 FIREPLACE BENCH SEATING



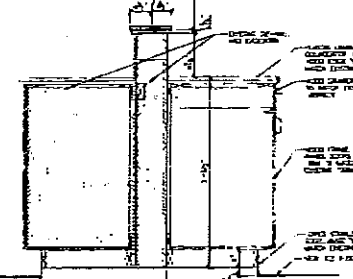
5 BAR



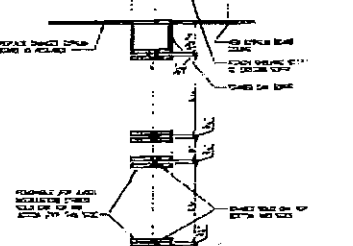
6 PANCAKETE SEATING



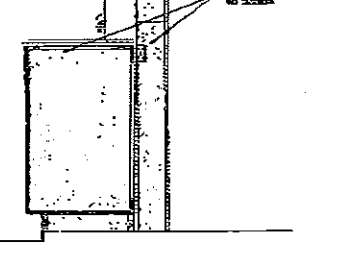
1 BAR BACK WALL



2 BAR BACK WALL



2 BAR BACK WALL



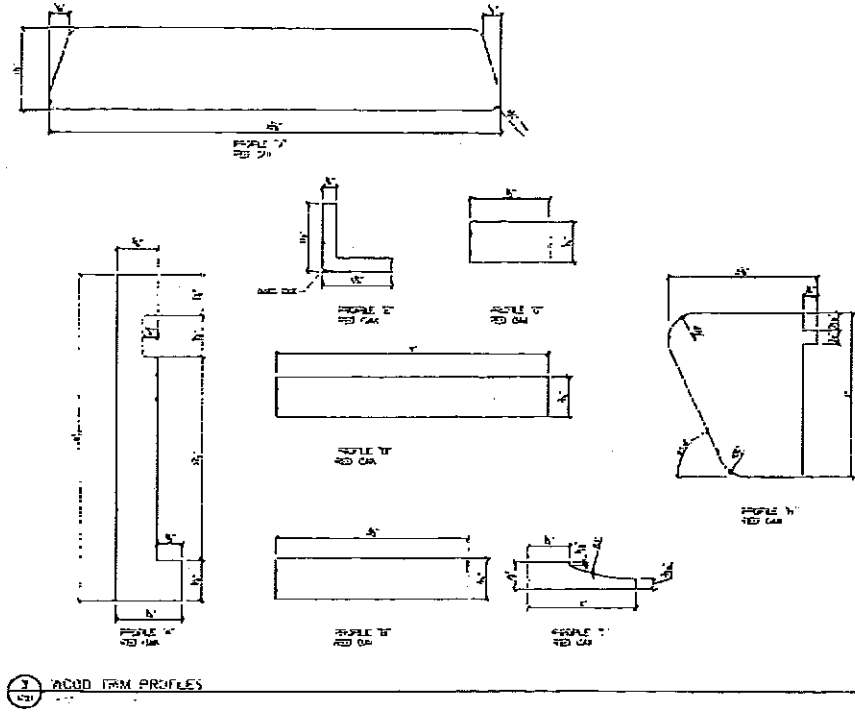
PLANNING

PROJECT: ENOVINO EXPANSION
 LOCATION: JUNCTION ROAD
 DESIGNER: FROM-DESIGN BUILD, INC.
 DATE: 07-09-07

ENOVINO EXPANSION
 JUNCTION ROAD
 ALFREDO'S ENOTECA
 JUNCTION ROAD

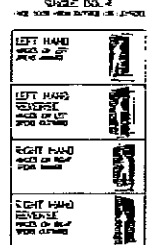
SCALE: 1/4" = 1'-0"

A602

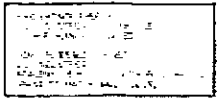


NO.	DESCRIPTION	QTY	UNIT	MANUFACTURER'S NAME	FINISH	DESCRIPTION	QTY	UNIT	MANUFACTURER'S NAME	FINISH	DESCRIPTION	QTY	UNIT	MANUFACTURER'S NAME	FINISH	DESCRIPTION	QTY	UNIT	MANUFACTURER'S NAME	FINISH	DESCRIPTION
1	DOOR FRAME	1	EA	ALUMINUM	ANODIZED	DOOR FRAME	1	EA	ALUMINUM	ANODIZED	DOOR FRAME	1	EA	ALUMINUM	ANODIZED	DOOR FRAME	1	EA	ALUMINUM	ANODIZED	DOOR FRAME

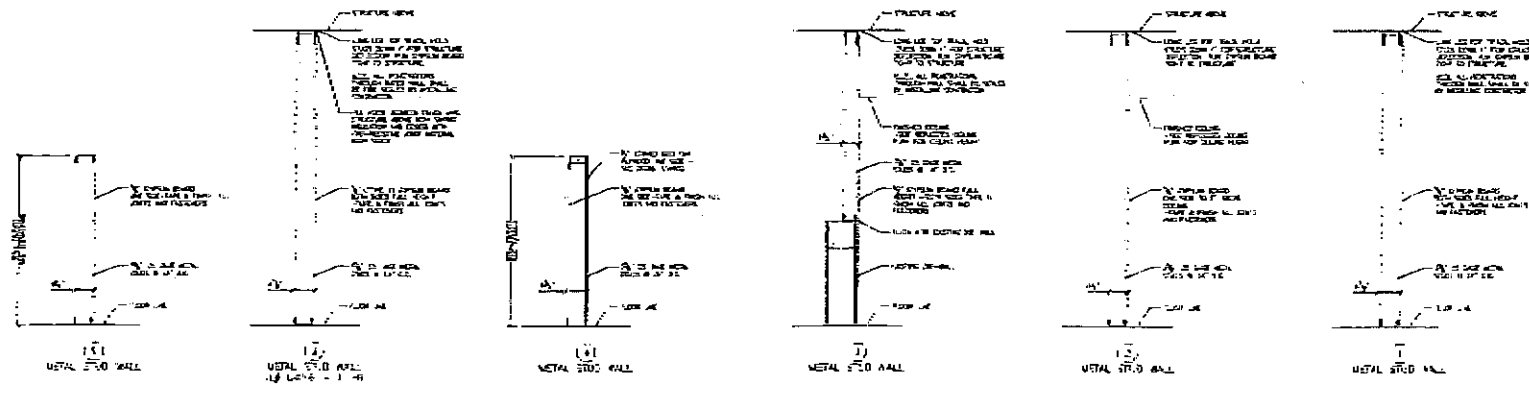
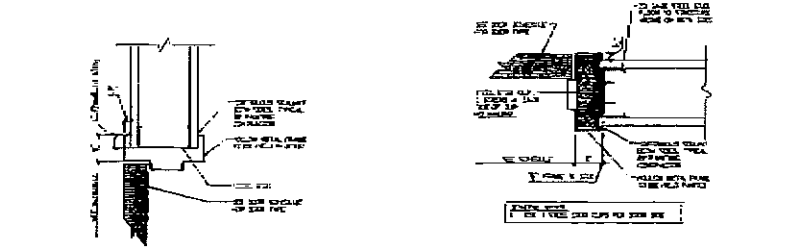
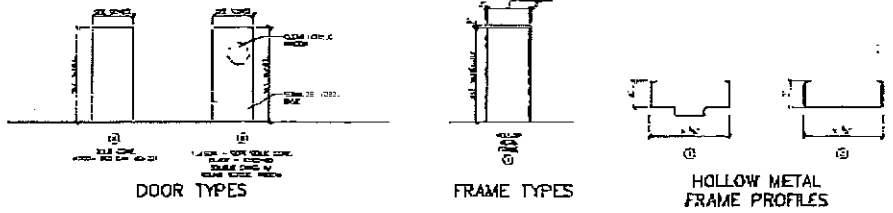
- 1. SEE ALL DIMENSIONS TO FACE UNLESS NOTED OTHERWISE.
- 2. DOOR FRAME SHALL BE ASSEMBLED TO THE DOOR.
- 3. FRAME SHALL BE ASSEMBLED TO THE DOOR BY THE CONTRACTOR.



DOOR SWING LEGEND



NO.	DESCRIPTION	QTY	UNIT	MANUFACTURER'S NAME	FINISH	DESCRIPTION	QTY	UNIT	MANUFACTURER'S NAME	FINISH	DESCRIPTION	QTY	UNIT	MANUFACTURER'S NAME	FINISH	DESCRIPTION	QTY	UNIT	MANUFACTURER'S NAME	FINISH	DESCRIPTION
1	DOOR FRAME	1	EA	ALUMINUM	ANODIZED	DOOR FRAME	1	EA	ALUMINUM	ANODIZED	DOOR FRAME	1	EA	ALUMINUM	ANODIZED	DOOR FRAME	1	EA	ALUMINUM	ANODIZED	DOOR FRAME



PLANNING

808-836-5818

ALFREDO'S ENOTECA
PORTLAND PLACE, PORTLAND, OREGON

PROJECT NUMBER: A701

1. THIS PLAN IS TO BE USED FOR THE CONSTRUCTION OF THE ENOVINO EXPANSION PROJECT. ALL DIMENSIONS ARE TO FACE UNLESS OTHERWISE NOTED.

2. ALL DIMENSIONS ARE TO FACE UNLESS OTHERWISE NOTED.

3. ALL DIMENSIONS ARE TO FACE UNLESS OTHERWISE NOTED.

4. ALL DIMENSIONS ARE TO FACE UNLESS OTHERWISE NOTED.

5. ALL DIMENSIONS ARE TO FACE UNLESS OTHERWISE NOTED.

6. ALL DIMENSIONS ARE TO FACE UNLESS OTHERWISE NOTED.

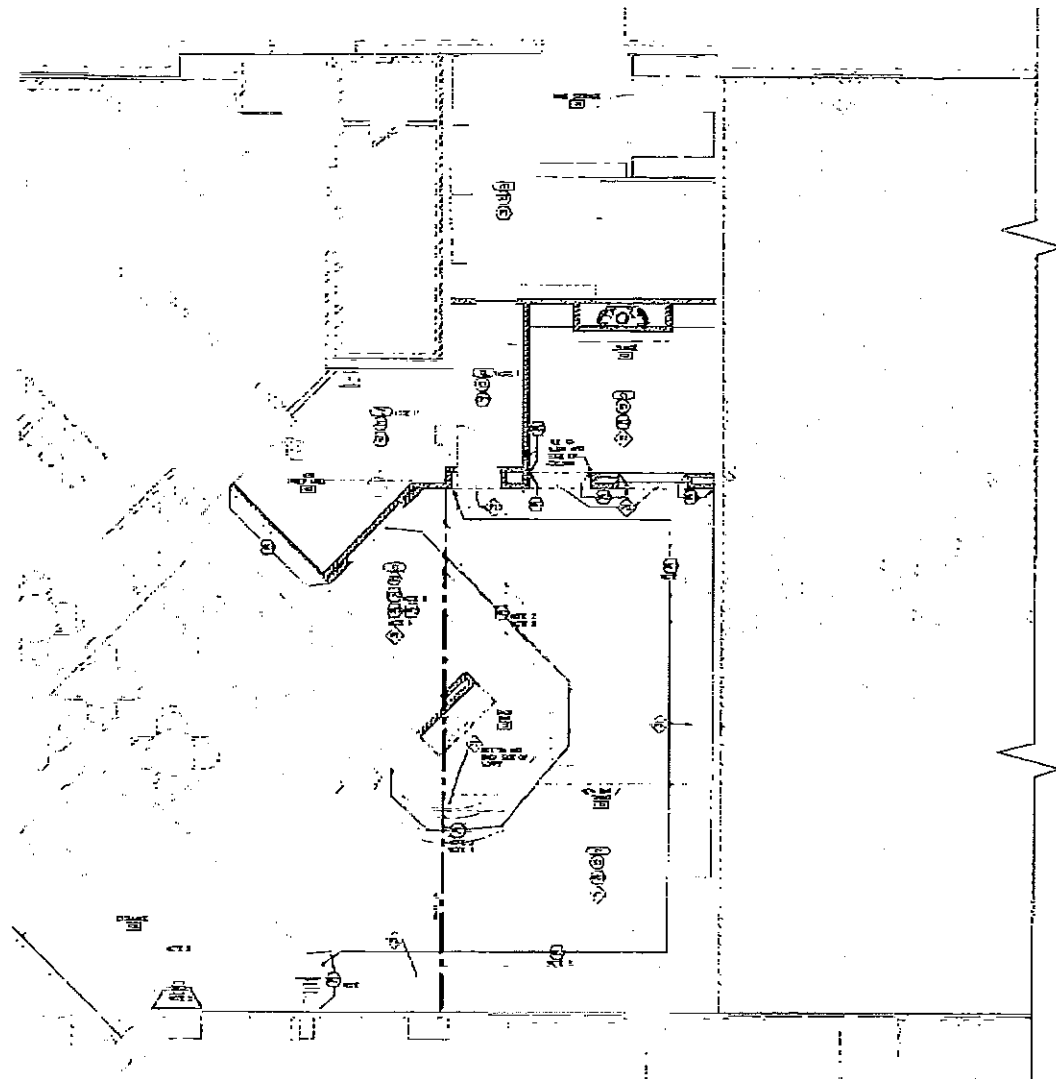
7. ALL DIMENSIONS ARE TO FACE UNLESS OTHERWISE NOTED.

8. ALL DIMENSIONS ARE TO FACE UNLESS OTHERWISE NOTED.

9. ALL DIMENSIONS ARE TO FACE UNLESS OTHERWISE NOTED.

10. ALL DIMENSIONS ARE TO FACE UNLESS OTHERWISE NOTED.

101	CONCRETE SLAB ON GROUND 12" THICK 12' x 12' BAY	REMOVE EXISTING CONCRETE SLAB AND RECONSTRUCT WITH NEW CONCRETE TO MATCH ADJACENT SLAB.
102	CONCRETE SLAB ON GROUND 12" THICK 12' x 12' BAY	REMOVE EXISTING CONCRETE SLAB AND RECONSTRUCT WITH NEW CONCRETE TO MATCH ADJACENT SLAB.
103	CONCRETE SLAB ON GROUND 12" THICK 12' x 12' BAY	REMOVE EXISTING CONCRETE SLAB AND RECONSTRUCT WITH NEW CONCRETE TO MATCH ADJACENT SLAB.
104	CONCRETE SLAB ON GROUND 12" THICK 12' x 12' BAY	REMOVE EXISTING CONCRETE SLAB AND RECONSTRUCT WITH NEW CONCRETE TO MATCH ADJACENT SLAB.
105	CONCRETE SLAB ON GROUND 12" THICK 12' x 12' BAY	REMOVE EXISTING CONCRETE SLAB AND RECONSTRUCT WITH NEW CONCRETE TO MATCH ADJACENT SLAB.
106	CONCRETE SLAB ON GROUND 12" THICK 12' x 12' BAY	REMOVE EXISTING CONCRETE SLAB AND RECONSTRUCT WITH NEW CONCRETE TO MATCH ADJACENT SLAB.
107	CONCRETE SLAB ON GROUND 12" THICK 12' x 12' BAY	REMOVE EXISTING CONCRETE SLAB AND RECONSTRUCT WITH NEW CONCRETE TO MATCH ADJACENT SLAB.
108	CONCRETE SLAB ON GROUND 12" THICK 12' x 12' BAY	REMOVE EXISTING CONCRETE SLAB AND RECONSTRUCT WITH NEW CONCRETE TO MATCH ADJACENT SLAB.
109	CONCRETE SLAB ON GROUND 12" THICK 12' x 12' BAY	REMOVE EXISTING CONCRETE SLAB AND RECONSTRUCT WITH NEW CONCRETE TO MATCH ADJACENT SLAB.
110	CONCRETE SLAB ON GROUND 12" THICK 12' x 12' BAY	REMOVE EXISTING CONCRETE SLAB AND RECONSTRUCT WITH NEW CONCRETE TO MATCH ADJACENT SLAB.
111	CONCRETE SLAB ON GROUND 12" THICK 12' x 12' BAY	REMOVE EXISTING CONCRETE SLAB AND RECONSTRUCT WITH NEW CONCRETE TO MATCH ADJACENT SLAB.
112	CONCRETE SLAB ON GROUND 12" THICK 12' x 12' BAY	REMOVE EXISTING CONCRETE SLAB AND RECONSTRUCT WITH NEW CONCRETE TO MATCH ADJACENT SLAB.
113	CONCRETE SLAB ON GROUND 12" THICK 12' x 12' BAY	REMOVE EXISTING CONCRETE SLAB AND RECONSTRUCT WITH NEW CONCRETE TO MATCH ADJACENT SLAB.
114	CONCRETE SLAB ON GROUND 12" THICK 12' x 12' BAY	REMOVE EXISTING CONCRETE SLAB AND RECONSTRUCT WITH NEW CONCRETE TO MATCH ADJACENT SLAB.
115	CONCRETE SLAB ON GROUND 12" THICK 12' x 12' BAY	REMOVE EXISTING CONCRETE SLAB AND RECONSTRUCT WITH NEW CONCRETE TO MATCH ADJACENT SLAB.
116	CONCRETE SLAB ON GROUND 12" THICK 12' x 12' BAY	REMOVE EXISTING CONCRETE SLAB AND RECONSTRUCT WITH NEW CONCRETE TO MATCH ADJACENT SLAB.
117	CONCRETE SLAB ON GROUND 12" THICK 12' x 12' BAY	REMOVE EXISTING CONCRETE SLAB AND RECONSTRUCT WITH NEW CONCRETE TO MATCH ADJACENT SLAB.
118	CONCRETE SLAB ON GROUND 12" THICK 12' x 12' BAY	REMOVE EXISTING CONCRETE SLAB AND RECONSTRUCT WITH NEW CONCRETE TO MATCH ADJACENT SLAB.
119	CONCRETE SLAB ON GROUND 12" THICK 12' x 12' BAY	REMOVE EXISTING CONCRETE SLAB AND RECONSTRUCT WITH NEW CONCRETE TO MATCH ADJACENT SLAB.
120	CONCRETE SLAB ON GROUND 12" THICK 12' x 12' BAY	REMOVE EXISTING CONCRETE SLAB AND RECONSTRUCT WITH NEW CONCRETE TO MATCH ADJACENT SLAB.



FINISH PLAN SYMBOLS

- FLOOR FINISH
- WALL FINISH
- CEILING FINISH
- DOOR FINISH

PLANNING

ALFREDO'S ENOTECA
PORTER AND PLACE, 101 JUNCTION ROAD
MADISON, WI 53717

ENOVINO EXPANSION
PORTER AND PLACE, 101 JUNCTION ROAD
MADISON, WI 53717

ALFREDO'S ENOTECA
PORTER AND PLACE, 101 JUNCTION ROAD
MADISON, WI 53717

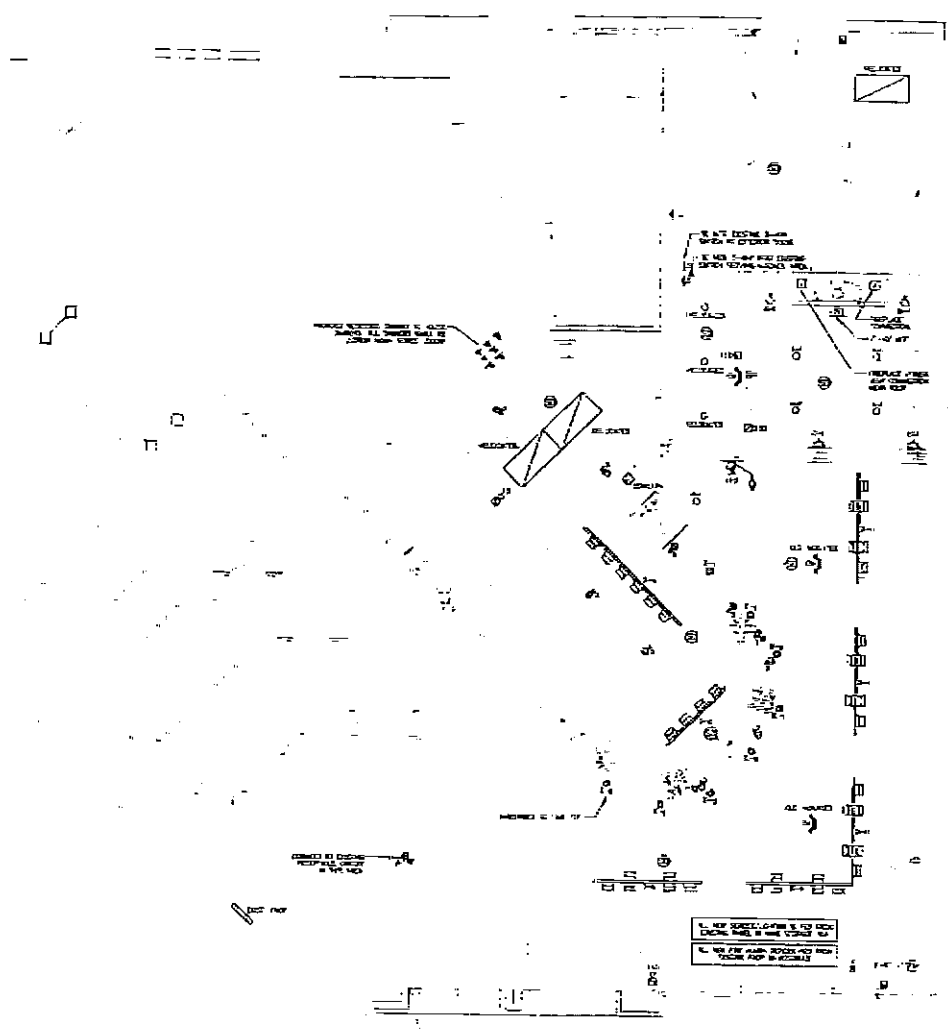
DATE: 07-09-07
BY: [Signature]

PROJECT: ENOVINO EXPANSION
SHEET NUMBER: **A901**



PLUMBING SYMBOL SCHEDULE

1	1/2" COPPER	10	1/2" GALV. STEEL
2	3/4" COPPER	11	3/4" GALV. STEEL
3	1" COPPER	12	1" GALV. STEEL
4	1 1/2" COPPER	13	1 1/2" GALV. STEEL
5	2" COPPER	14	2" GALV. STEEL
6	2 1/2" COPPER	15	2 1/2" GALV. STEEL
7	3" COPPER	16	3" GALV. STEEL
8	3 1/2" COPPER	17	3 1/2" GALV. STEEL
9	4" COPPER	18	4" GALV. STEEL
10	4 1/2" COPPER	19	4 1/2" GALV. STEEL
11	5" COPPER	20	5" GALV. STEEL
12	5 1/2" COPPER	21	5 1/2" GALV. STEEL
13	6" COPPER	22	6" GALV. STEEL
14	6 1/2" COPPER	23	6 1/2" GALV. STEEL
15	8" COPPER	24	8" GALV. STEEL
16	8 1/2" COPPER	25	8 1/2" GALV. STEEL
17	10" COPPER	26	10" GALV. STEEL
18	10 1/2" COPPER	27	10 1/2" GALV. STEEL
19	12" COPPER	28	12" GALV. STEEL
20	12 1/2" COPPER	29	12 1/2" GALV. STEEL
21	14" COPPER	30	14" GALV. STEEL
22	14 1/2" COPPER	31	14 1/2" GALV. STEEL
23	16" COPPER	32	16" GALV. STEEL
24	16 1/2" COPPER	33	16 1/2" GALV. STEEL
25	18" COPPER	34	18" GALV. STEEL
26	18 1/2" COPPER	35	18 1/2" GALV. STEEL
27	20" COPPER	36	20" GALV. STEEL
28	20 1/2" COPPER	37	20 1/2" GALV. STEEL
29	24" COPPER	38	24" GALV. STEEL
30	24 1/2" COPPER	39	24 1/2" GALV. STEEL
31	30" COPPER	40	30" GALV. STEEL
32	30 1/2" COPPER	41	30 1/2" GALV. STEEL
33	36" COPPER	42	36" GALV. STEEL
34	36 1/2" COPPER	43	36 1/2" GALV. STEEL
35	42" COPPER	44	42" GALV. STEEL
36	42 1/2" COPPER	45	42 1/2" GALV. STEEL
37	48" COPPER	46	48" GALV. STEEL
38	48 1/2" COPPER	47	48 1/2" GALV. STEEL
39	54" COPPER	48	54" GALV. STEEL
40	54 1/2" COPPER	49	54 1/2" GALV. STEEL
41	60" COPPER	50	60" GALV. STEEL
42	60 1/2" COPPER	51	60 1/2" GALV. STEEL
43	72" COPPER	52	72" GALV. STEEL
44	72 1/2" COPPER	53	72 1/2" GALV. STEEL
45	84" COPPER	54	84" GALV. STEEL
46	84 1/2" COPPER	55	84 1/2" GALV. STEEL
47	96" COPPER	56	96" GALV. STEEL
48	96 1/2" COPPER	57	96 1/2" GALV. STEEL
49	108" COPPER	58	108" GALV. STEEL
50	108 1/2" COPPER	59	108 1/2" GALV. STEEL
51	120" COPPER	60	120" GALV. STEEL
52	120 1/2" COPPER	61	120 1/2" GALV. STEEL
53	144" COPPER	62	144" GALV. STEEL
54	144 1/2" COPPER	63	144 1/2" GALV. STEEL
55	168" COPPER	64	168" GALV. STEEL
56	168 1/2" COPPER	65	168 1/2" GALV. STEEL
57	192" COPPER	66	192" GALV. STEEL
58	192 1/2" COPPER	67	192 1/2" GALV. STEEL
59	216" COPPER	68	216" GALV. STEEL
60	216 1/2" COPPER	69	216 1/2" GALV. STEEL
61	240" COPPER	70	240" GALV. STEEL
62	240 1/2" COPPER	71	240 1/2" GALV. STEEL
63	288" COPPER	72	288" GALV. STEEL
64	288 1/2" COPPER	73	288 1/2" GALV. STEEL
65	336" COPPER	74	336" GALV. STEEL
66	336 1/2" COPPER	75	336 1/2" GALV. STEEL
67	384" COPPER	76	384" GALV. STEEL
68	384 1/2" COPPER	77	384 1/2" GALV. STEEL
69	432" COPPER	78	432" GALV. STEEL
70	432 1/2" COPPER	79	432 1/2" GALV. STEEL
71	480" COPPER	80	480" GALV. STEEL
72	480 1/2" COPPER	81	480 1/2" GALV. STEEL
73	576" COPPER	82	576" GALV. STEEL
74	576 1/2" COPPER	83	576 1/2" GALV. STEEL
75	672" COPPER	84	672" GALV. STEEL
76	672 1/2" COPPER	85	672 1/2" GALV. STEEL
77	768" COPPER	86	768" GALV. STEEL
78	768 1/2" COPPER	87	768 1/2" GALV. STEEL
79	864" COPPER	88	864" GALV. STEEL
80	864 1/2" COPPER	89	864 1/2" GALV. STEEL
81	960" COPPER	90	960" GALV. STEEL
82	960 1/2" COPPER	91	960 1/2" GALV. STEEL
83	1056" COPPER	92	1056" GALV. STEEL
84	1056 1/2" COPPER	93	1056 1/2" GALV. STEEL
85	1152" COPPER	94	1152" GALV. STEEL
86	1152 1/2" COPPER	95	1152 1/2" GALV. STEEL
87	1248" COPPER	96	1248" GALV. STEEL
88	1248 1/2" COPPER	97	1248 1/2" GALV. STEEL
89	1344" COPPER	98	1344" GALV. STEEL
90	1344 1/2" COPPER	99	1344 1/2" GALV. STEEL
91	1440" COPPER	100	1440" GALV. STEEL
92	1440 1/2" COPPER	101	1440 1/2" GALV. STEEL
93	1536" COPPER	102	1536" GALV. STEEL
94	1536 1/2" COPPER	103	1536 1/2" GALV. STEEL
95	1632" COPPER	104	1632" GALV. STEEL
96	1632 1/2" COPPER	105	1632 1/2" GALV. STEEL
97	1728" COPPER	106	1728" GALV. STEEL
98	1728 1/2" COPPER	107	1728 1/2" GALV. STEEL
99	1824" COPPER	108	1824" GALV. STEEL
100	1824 1/2" COPPER	109	1824 1/2" GALV. STEEL
101	1920" COPPER	110	1920" GALV. STEEL
102	1920 1/2" COPPER	111	1920 1/2" GALV. STEEL
103	2016" COPPER	112	2016" GALV. STEEL
104	2016 1/2" COPPER	113	2016 1/2" GALV. STEEL
105	2112" COPPER	114	2112" GALV. STEEL
106	2112 1/2" COPPER	115	2112 1/2" GALV. STEEL
107	2208" COPPER	116	2208" GALV. STEEL
108	2208 1/2" COPPER	117	2208 1/2" GALV. STEEL
109	2304" COPPER	118	2304" GALV. STEEL
110	2304 1/2" COPPER	119	2304 1/2" GALV. STEEL
111	2400" COPPER	120	2400" GALV. STEEL
112	2400 1/2" COPPER	121	2400 1/2" GALV. STEEL
113	2496" COPPER	122	2496" GALV. STEEL
114	2496 1/2" COPPER	123	2496 1/2" GALV. STEEL
115	2592" COPPER	124	2592" GALV. STEEL
116	2592 1/2" COPPER	125	2592 1/2" GALV. STEEL
117	2688" COPPER	126	2688" GALV. STEEL
118	2688 1/2" COPPER	127	2688 1/2" GALV. STEEL
119	2784" COPPER	128	2784" GALV. STEEL
120	2784 1/2" COPPER	129	2784 1/2" GALV. STEEL
121	2880" COPPER	130	2880" GALV. STEEL
122	2880 1/2" COPPER	131	2880 1/2" GALV. STEEL
123	2976" COPPER	132	2976" GALV. STEEL
124	2976 1/2" COPPER	133	2976 1/2" GALV. STEEL
125	3072" COPPER	134	3072" GALV. STEEL
126	3072 1/2" COPPER	135	3072 1/2" GALV. STEEL
127	3168" COPPER	136	3168" GALV. STEEL
128	3168 1/2" COPPER	137	3168 1/2" GALV. STEEL
129	3264" COPPER	138	3264" GALV. STEEL
130	3264 1/2" COPPER	139	3264 1/2" GALV. STEEL
131	3360" COPPER	140	3360" GALV. STEEL
132	3360 1/2" COPPER	141	3360 1/2" GALV. STEEL
133	3456" COPPER	142	3456" GALV. STEEL
134	3456 1/2" COPPER	143	3456 1/2" GALV. STEEL
135	3552" COPPER	144	3552" GALV. STEEL
136	3552 1/2" COPPER	145	3552 1/2" GALV. STEEL
137	3648" COPPER	146	3648" GALV. STEEL
138	3648 1/2" COPPER	147	3648 1/2" GALV. STEEL
139	3744" COPPER	148	3744" GALV. STEEL
140	3744 1/2" COPPER	149	3744 1/2" GALV. STEEL
141	3840" COPPER	150	3840" GALV. STEEL
142	3840 1/2" COPPER	151	3840 1/2" GALV. STEEL
143	3936" COPPER	152	3936" GALV. STEEL
144	3936 1/2" COPPER	153	3936 1/2" GALV. STEEL
145	4032" COPPER	154	4032" GALV. STEEL
146	4032 1/2" COPPER	155	4032 1/2" GALV. STEEL
147	4128" COPPER	156	4128" GALV. STEEL
148	4128 1/2" COPPER	157	4128 1/2" GALV. STEEL
149	4224" COPPER	158	4224" GALV. STEEL
150	4224 1/2" COPPER	159	4224 1/2" GALV. STEEL
151	4320" COPPER	160	4320" GALV. STEEL
152	4320 1/2" COPPER	161	4320 1/2" GALV. STEEL
153	4416" COPPER	162	4416" GALV. STEEL
154	4416 1/2" COPPER	163	4416 1/2" GALV. STEEL
155	4512" COPPER	164	4512" GALV. STEEL
156	4512 1/2" COPPER	165	4512 1/2" GALV. STEEL
157	4608" COPPER	166	4608" GALV. STEEL
158	4608 1/2" COPPER	167	4608 1/2" GALV. STEEL
159	4704" COPPER	168	4704" GALV. STEEL
160	4704 1/2" COPPER	169	4704 1/2" GALV. STEEL
161	4800" COPPER	170	4800" GALV. STEEL
162	4800 1/2" COPPER	171	4800 1/2" GALV. STEEL
163	4896" COPPER	172	4896" GALV. STEEL
164	4896 1/2" COPPER	173	4896 1/2" GALV. STEEL
165	4992" COPPER	174	4992" GALV. STEEL
166	4992 1/2" COPPER	175	4992 1/2" GALV. STEEL
167	5088" COPPER	176	5088" GALV. STEEL
168	5088 1/2" COPPER	177	5088 1/2" GALV. STEEL
169	5184" COPPER	178	5184" GALV. STEEL
170	5184 1/2" COPPER	179	5184 1/2" GALV. STEEL
171	5280" COPPER	180	5280" GALV. STEEL
172	5280 1/2" COPPER	181	5280 1/2" GALV. STEEL
173	5376" COPPER	182	5376" GALV. STEEL
174	5376 1/2" COPPER	183	5376 1/2" GALV. STEEL
175	5472" COPPER	184	5472" GALV. STEEL
176	5472 1/2" COPPER	185	5472 1/2" GALV. STEEL
177	5568" COPPER	186	5568" GALV. STEEL
178	5568 1/2" COPPER	187	5568 1/2" GALV. STEEL
179	5664" COPPER	188	5664" GALV. STEEL
180	5664 1/2" COPPER	189	5664 1/2" GALV. STEEL
181	5760" COPPER	190	5760" GALV. STEEL
182	5760 1/2" COPPER	191	5760 1/2" GALV. STEEL
183	5856" COPPER	192	5856" GALV. STEEL
184	5856 1/2" COPPER	193	5856 1/2" GALV. STEEL
185	5952" COPPER	194	5952" GALV. STEEL
186	5952 1/2" COPPER	195	5952 1/2" GALV. STEEL
187	6048" COPPER	196	6048" GALV. STEEL
188	6048 1/2" COPPER	197	6048 1/2" GALV. STEEL
189	6144" COPPER	198	6144" GALV. STEEL
190	6144 1/2" COPPER	199	6144 1/2" GALV. STEEL
191	6240" COPPER	200	6240" GALV. STEEL
192	6240 1/2" COPPER	201	6240 1/2" GALV. STEEL
193	6336" COPPER	202	6336" GALV. STEEL
194	6336 1/2" COPPER	203	6336 1/2" GALV. STEEL
195	6432" COPPER	204	6432" GALV. STEEL
196	6432 1/2" COPPER	205	6432 1/2" GALV. STEEL
197	6528" COPPER	206	6528" GALV. STEEL
198	6528 1/2" COPPER	207	6528 1/2" GALV. STEEL
199	6624" COPPER	208	6624" GALV. STEEL
200	6624 1/2" COPPER	209	6624 1/2" GALV. STEEL
201	6720" COPPER	210	6720" GALV. STEEL
202	6720 1/2" COPPER	211	6720 1/2" GALV. STEEL
203	6816" COPPER	212	6816" GALV. STEEL
204	6816 1/2" COPPER	213	6816 1/2" GALV. STEEL
205	6912" COPPER	214	6912" GALV. STEEL
206	6912 1/2" COPPER	215	6912 1/2" GALV. STEEL
207	7008" COPPER	216	7008" GALV. STEEL
208	7008 1/2" COPPER	217	7008 1/2" GALV. STEEL
209	7104" COPPER	218	7104" GALV. STEEL
210	7104 1/2" COPPER	219	7104 1/2" GALV. STEEL
211	7200" COPPER	220	7200" GALV. STEEL
212	7200 1/2" COPPER	221	7200 1/2" GALV. STEEL
213	7296" COPPER	222	7296" GALV. STEEL
214	7296 1/2" COPPER	223	7296 1/2" GALV. STEEL
215	7392" COPPER	224	7392" GALV. STEEL
216	7392 1/2" COPPER	225	7392 1/2" GALV. STEEL
217	7488" COPPER	226	7488" GALV. STEEL
218	7488 1/2" COPPER	227	7488 1/2" GALV. STEEL
219	7584" COPPER	228	7584" GALV. STEEL
220	7584 1/2" COPPER	229	7584 1/2" GALV. STEEL
221	7680" COPPER	230	7680" GALV. STEEL
222	7680 1/2" COPPER	231	7680 1/2" GALV. STEEL
223	7776" COPPER	232	7776" GALV. STEEL
224	7776 1/2" COPPER	233	7776 1/2" GALV. STEEL
225	7872" COPPER	234	7872" GALV. STEEL
226	7872 1/2" COPPER	235	7872 1/2" GALV. STEEL
227	7968" COPPER	236	7968" GALV. STEEL
228	7968 1/2" COPPER	237	7968 1/2" GALV. STEEL
229	8064" COPPER	238	8064" GALV. STEEL
230	8064 1/2" COPPER	239	8064 1/2" GALV. STEEL
231	8160" COPPER	240	8160" GALV. STEEL
232	8160 1/2" COPPER	241	8160 1/2" GALV. STEEL
233	8256" COPPER	242	8256" GALV. STEEL
234	8256 1/2" COPPER	243	8256 1/2" GALV. STEEL
235	8352" COPPER	244	8352" GALV. STEEL
236	8352 1/2" COPPER	245	8352 1/2" GALV. STEEL
237	8448" COPPER	246	8448" GALV. STEEL
238	8448 1/2" COPPER	247	8448 1/2" GALV. STEEL
239	8544" COPPER	248	8544" GALV. STEEL
240	8544 1/2" COPPER	249	8544 1/2" GALV. STEEL
241	8640" COPPER	250	8640" GALV. STEEL
242	8640 1/2" COPPER	251	8640 1/2" GALV. STEEL
243	8736" COPPER	252	87

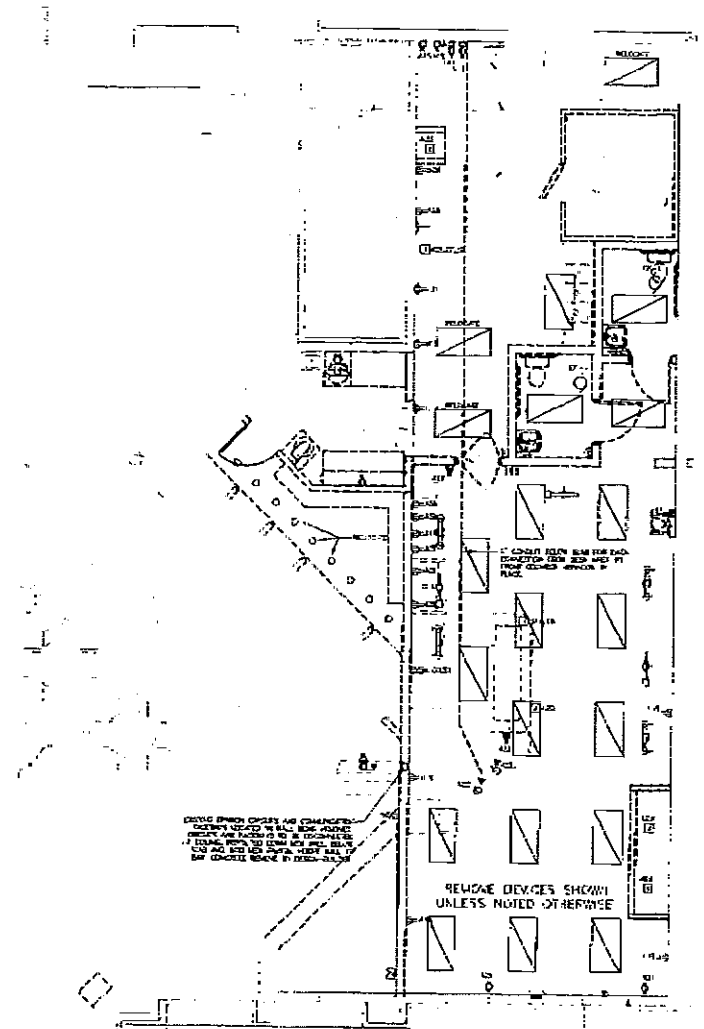


3 FLOOR PLAN

- NOT TO SCALE**
- 1 - ALL INTERIOR WALLS
 - 2 - ALL INTERIOR DOORS
 - 3 - ALL EXTERIOR WALLS, ROOF, AND FOUNDATION
 - 4 - ALL EXTERIOR DOORS
 - 5 - ALL EXTERIOR WINDOWS
 - 6 - ALL EXTERIOR ROOF
 - 7 - ALL EXTERIOR FOUNDATION

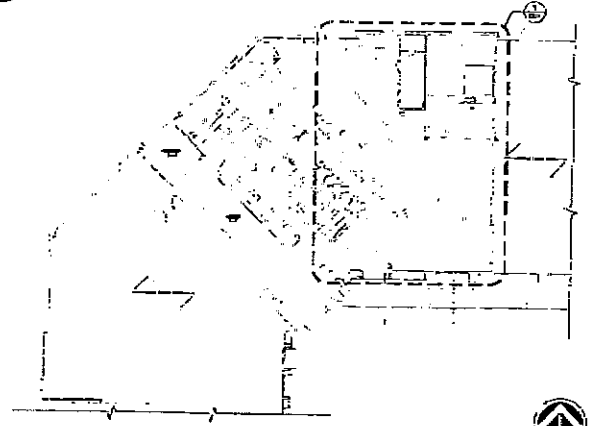
1. ALL DEVICES TO BE REMOVED UNLESS NOTED OTHERWISE

2. ALL DEVICES TO BE REMOVED UNLESS NOTED OTHERWISE



2 DEMOLITION PLAN

REMOVE DEVICES SHOWN UNLESS NOTED OTHERWISE



1 KEY PLAN

PLANNING

FROM-Design Build, Inc.
 1011 North Main Street
 Madison, WI 53703
 (608) 261-1111

ENOVINO EXPANSION
 PORTER ROAD, MADISON, WI 53711

ALFREDO'S ENOTECA
 PORTER ROAD, MADISON, WI 53711

PROJECT & SHEET INFORMATION

PROJECT NO. 020000
 SHEET NUMBER
E201

DATE: 07/09/07
 BY: FROM-Design Build, Inc.

