

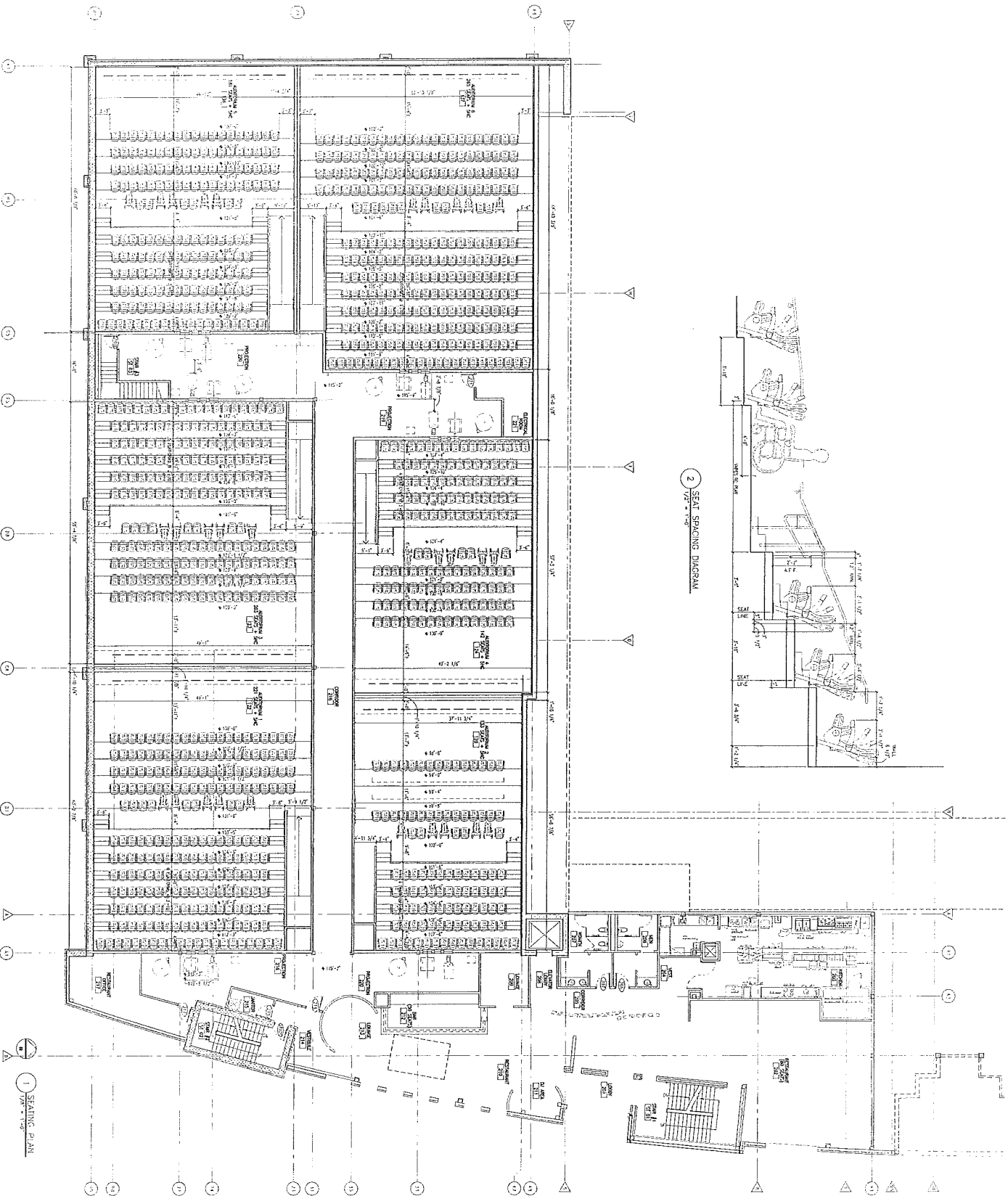
AMC Feature Fare Menu

BEVERAGES	Size (if applicable)	Calories		Calories
Coca-Cola Freestyle			Stone-Fired Flatbread Pizza	510-570
	Large	0-1020	Stone-Fired Flatbread Pizza (4-Cheese, Pepperoni, BBQ Chicken)	
	Regular	0-880		
		430-480	SNACKS	
ICEE			Pretzel Bites (Salted, Cinnamon Sugar, Parmesan)	700-1040
Bottled Drinks	Large	0	Bavarian Legend	1940
	Regular	0-220	MovieNachos	845
Bottled Water	Large	0	Kids Pack	635-830
	Regular	0	Hillshire Farms Small Plates	300
	Large (Kcup)	0-5	Mozzarella Sticks	770
	Regular	0	Curly Fries	630
	Large (Kcup)	0-5	Chicken Tenders	710
	Regular	0-5	Cheeseburger Sliders	660
	Regular (Kcup)	0-5	Chicken & Waffles	350
POPCORN			TRIPLE FEATURES	
Popcorn	Regular	600	BYO Dog Triple Feature	1190-1550
	Large	1090	Burger Slider	1330-1690
	Large	1090	Chicken & Waffles	1020-1380
Gourmet Popcorn	1 Flavor	1110-2070	Chicken Tenders	1380-1740
	2 Flavors	1790-3830		
		1090	COMBOS	
		1090	Large Popcorn Tub + Large Drink	970-1990
		1090	Large Popcorn Bag + Large Drink	970-1990
		-	Gourmet Popcorn Duo + Large Drink	2220-4830
		520-860	Stone-Fired Flatbread Pizza + Large Drink	510-1590
		520	The Bavarian Legend + Large Drink	1920-2940
			MovieNachos + Large Drink	845-1865
			Chicken & Waffles Triple Feature	1020-1380
			Popcorn + 2 Large Drinks	1090-3130
			Chicken Tenders + Large Drink	710-1590
			Plain Hot Dog + Large Drink	540-1540
			KidsPack Combo	635-830
TREATS				
Candy	Large	100-600		
	Regular	90-509		
		280-490		
		300-700		
Novelty Premium Ice Cream				
Gluten-Free				

BUSINESS PLAN

Sundance Cinemas, LLC (“Sundance”), the holder of an existing Class B Combination License for certain premises at 430 N. Midvale Boulevard will be merged into its corporate parent, American Multi-Cinema, Inc. (“AMC”). All of the officers and directors of AMC are the same as those of Sundance.

No changes will be made to the current operation of the theater in connection with the proposed internal corporate restructuring.



A1.11

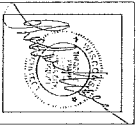
SEATING PLAN BY REFERENCE

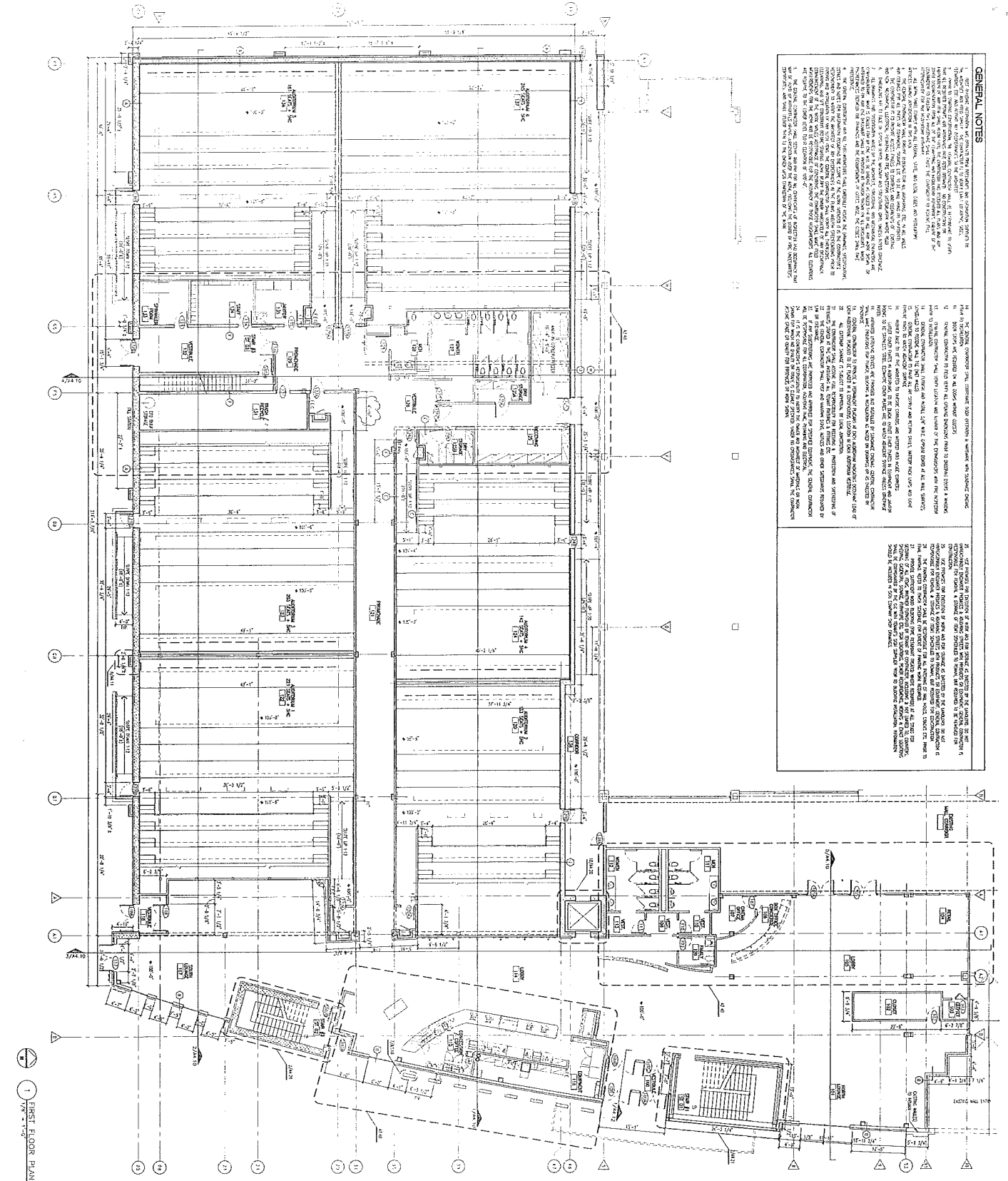
REVISION	DATE	BY	CHKD

sundance 608
CORE and SHELL PACKAGE
 HILLDALE SHOPPING CENTER
 Madison, Wisconsin

PROJECT NO. 02/2/AM
 DESIGNER: LVS
 DATE: 11/11/11

JOHN FRIEDMAN ASSOCIATES
 ARCHITECTS
 1000 W. MICHIGAN
 MADISON, WI 53706
 TEL: 608.261.2121





<p>PARTITION TYPES</p> <p>1. BRICK CONCRETE ON G.I. (CONCRETE)</p> <p>2. 1/2" GYP. BOARD ON 2x4 WOOD STUDS (WOOD STUD)</p> <p>3. 5/8" GYP. BOARD ON 2x4 WOOD STUDS (WOOD STUD)</p> <p>4. 5/8" GYP. BOARD ON 2x4 WOOD STUDS (WOOD STUD)</p> <p>5. 5/8" GYP. BOARD ON 2x4 WOOD STUDS (WOOD STUD)</p> <p>6. 5/8" GYP. BOARD ON 2x4 WOOD STUDS (WOOD STUD)</p> <p>7. 5/8" GYP. BOARD ON 2x4 WOOD STUDS (WOOD STUD)</p> <p>8. 5/8" GYP. BOARD ON 2x4 WOOD STUDS (WOOD STUD)</p> <p>9. 5/8" GYP. BOARD ON 2x4 WOOD STUDS (WOOD STUD)</p> <p>10. 5/8" GYP. BOARD ON 2x4 WOOD STUDS (WOOD STUD)</p>	<p>PARTITION NOTES:</p> <p>1. ALL PARTITIONS SHALL BE CONSTRUCTED IN ACCORDANCE WITH THE REQUIREMENTS OF THE IBC AND THE LOCAL BUILDING DEPARTMENT.</p> <p>2. ALL PARTITIONS SHALL BE FINISHED WITH 5/8" GYP. BOARD ON 2x4 WOOD STUDS.</p> <p>3. ALL PARTITIONS SHALL BE FINISHED WITH 5/8" GYP. BOARD ON 2x4 WOOD STUDS.</p> <p>4. ALL PARTITIONS SHALL BE FINISHED WITH 5/8" GYP. BOARD ON 2x4 WOOD STUDS.</p> <p>5. ALL PARTITIONS SHALL BE FINISHED WITH 5/8" GYP. BOARD ON 2x4 WOOD STUDS.</p> <p>6. ALL PARTITIONS SHALL BE FINISHED WITH 5/8" GYP. BOARD ON 2x4 WOOD STUDS.</p> <p>7. ALL PARTITIONS SHALL BE FINISHED WITH 5/8" GYP. BOARD ON 2x4 WOOD STUDS.</p> <p>8. ALL PARTITIONS SHALL BE FINISHED WITH 5/8" GYP. BOARD ON 2x4 WOOD STUDS.</p> <p>9. ALL PARTITIONS SHALL BE FINISHED WITH 5/8" GYP. BOARD ON 2x4 WOOD STUDS.</p> <p>10. ALL PARTITIONS SHALL BE FINISHED WITH 5/8" GYP. BOARD ON 2x4 WOOD STUDS.</p>
--	--

PROJECT: SUNDAANCE 608
DATE: 02/27/06
DRAWING: 00064

sundance 608
CORE and SHELL PACKAGE
HILDALE SHOPPING CENTER
Madison, Wisconsin

REVISED: 02/27/06
DATE: 02/27/06
DRAWING: 00064

PROJECT: SUNDAANCE 608
DATE: 02/27/06
DRAWING: 00064

PROJECT: SUNDAANCE 608
DATE: 02/27/06
DRAWING: 00064

PROJECT: SUNDAANCE 608
DATE: 02/27/06
DRAWING: 00064

PROJECT: SUNDAANCE 608
DATE: 02/27/06
DRAWING: 00064

PROJECT: SUNDAANCE 608
DATE: 02/27/06
DRAWING: 00064

GENERAL NOTES

1. ALL WORK SHALL BE IN ACCORDANCE WITH THE 2000 INTERNATIONAL BUILDING CODE (IBC) AND THE LOCAL BUILDING DEPARTMENT.

2. ALL PARTITIONS SHALL BE CONSTRUCTED IN ACCORDANCE WITH THE REQUIREMENTS OF THE IBC AND THE LOCAL BUILDING DEPARTMENT.

3. ALL PARTITIONS SHALL BE FINISHED WITH 5/8" GYP. BOARD ON 2x4 WOOD STUDS.

4. ALL PARTITIONS SHALL BE FINISHED WITH 5/8" GYP. BOARD ON 2x4 WOOD STUDS.

5. ALL PARTITIONS SHALL BE FINISHED WITH 5/8" GYP. BOARD ON 2x4 WOOD STUDS.

6. ALL PARTITIONS SHALL BE FINISHED WITH 5/8" GYP. BOARD ON 2x4 WOOD STUDS.

7. ALL PARTITIONS SHALL BE FINISHED WITH 5/8" GYP. BOARD ON 2x4 WOOD STUDS.

8. ALL PARTITIONS SHALL BE FINISHED WITH 5/8" GYP. BOARD ON 2x4 WOOD STUDS.

9. ALL PARTITIONS SHALL BE FINISHED WITH 5/8" GYP. BOARD ON 2x4 WOOD STUDS.

10. ALL PARTITIONS SHALL BE FINISHED WITH 5/8" GYP. BOARD ON 2x4 WOOD STUDS.

11. ALL PARTITIONS SHALL BE CONSTRUCTED IN ACCORDANCE WITH THE REQUIREMENTS OF THE IBC AND THE LOCAL BUILDING DEPARTMENT.

12. ALL PARTITIONS SHALL BE FINISHED WITH 5/8" GYP. BOARD ON 2x4 WOOD STUDS.

13. ALL PARTITIONS SHALL BE FINISHED WITH 5/8" GYP. BOARD ON 2x4 WOOD STUDS.

14. ALL PARTITIONS SHALL BE FINISHED WITH 5/8" GYP. BOARD ON 2x4 WOOD STUDS.

15. ALL PARTITIONS SHALL BE FINISHED WITH 5/8" GYP. BOARD ON 2x4 WOOD STUDS.

16. ALL PARTITIONS SHALL BE FINISHED WITH 5/8" GYP. BOARD ON 2x4 WOOD STUDS.

17. ALL PARTITIONS SHALL BE FINISHED WITH 5/8" GYP. BOARD ON 2x4 WOOD STUDS.

18. ALL PARTITIONS SHALL BE FINISHED WITH 5/8" GYP. BOARD ON 2x4 WOOD STUDS.

19. ALL PARTITIONS SHALL BE FINISHED WITH 5/8" GYP. BOARD ON 2x4 WOOD STUDS.

20. ALL PARTITIONS SHALL BE FINISHED WITH 5/8" GYP. BOARD ON 2x4 WOOD STUDS.

21. ALL PARTITIONS SHALL BE CONSTRUCTED IN ACCORDANCE WITH THE REQUIREMENTS OF THE IBC AND THE LOCAL BUILDING DEPARTMENT.

22. ALL PARTITIONS SHALL BE FINISHED WITH 5/8" GYP. BOARD ON 2x4 WOOD STUDS.

23. ALL PARTITIONS SHALL BE FINISHED WITH 5/8" GYP. BOARD ON 2x4 WOOD STUDS.

24. ALL PARTITIONS SHALL BE FINISHED WITH 5/8" GYP. BOARD ON 2x4 WOOD STUDS.

25. ALL PARTITIONS SHALL BE FINISHED WITH 5/8" GYP. BOARD ON 2x4 WOOD STUDS.

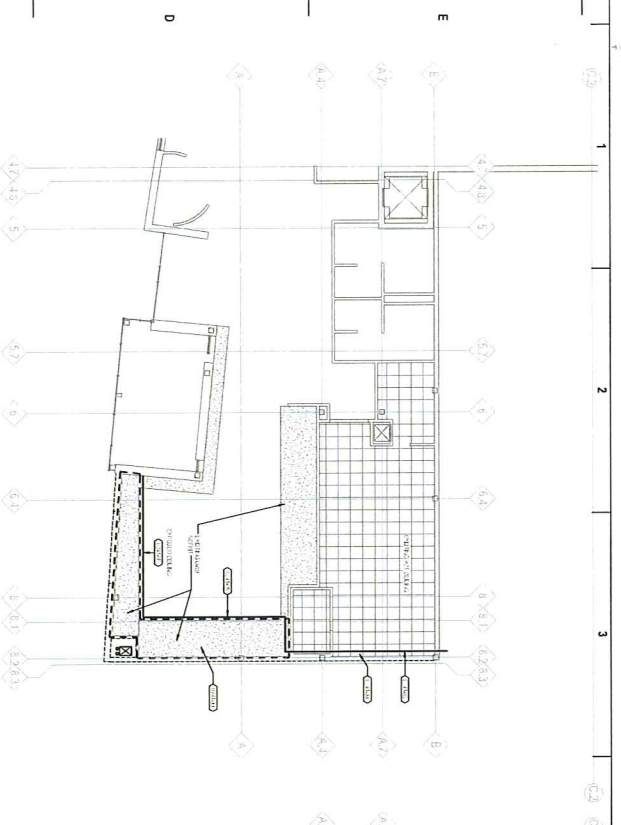
26. ALL PARTITIONS SHALL BE FINISHED WITH 5/8" GYP. BOARD ON 2x4 WOOD STUDS.

27. ALL PARTITIONS SHALL BE FINISHED WITH 5/8" GYP. BOARD ON 2x4 WOOD STUDS.

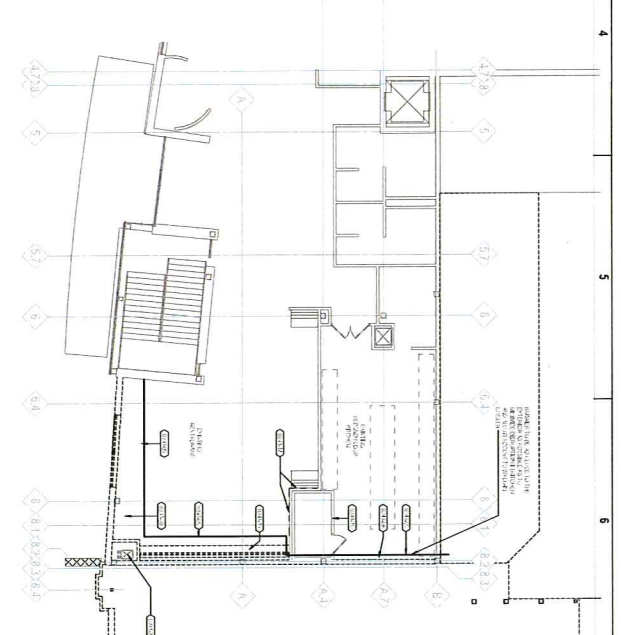
28. ALL PARTITIONS SHALL BE FINISHED WITH 5/8" GYP. BOARD ON 2x4 WOOD STUDS.

29. ALL PARTITIONS SHALL BE FINISHED WITH 5/8" GYP. BOARD ON 2x4 WOOD STUDS.

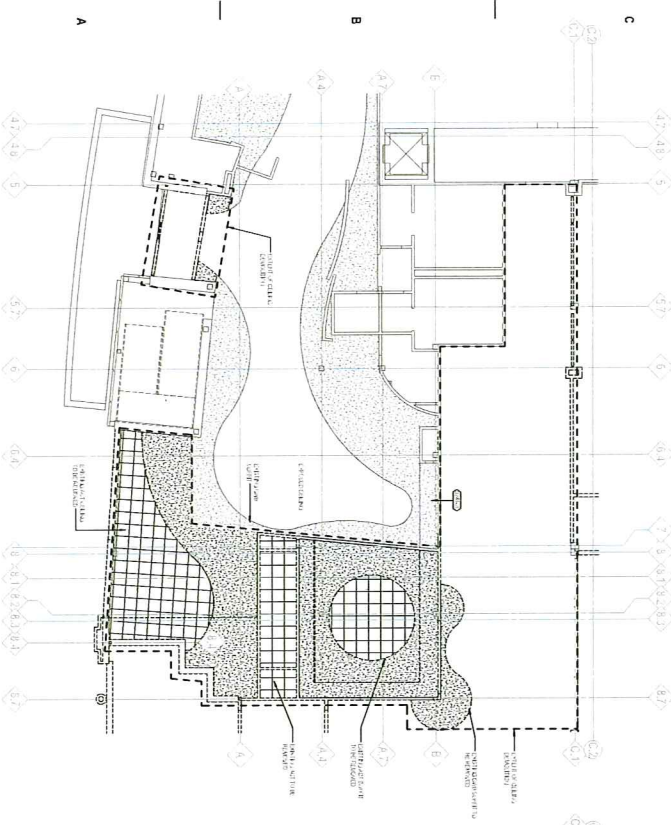
30. ALL PARTITIONS SHALL BE FINISHED WITH 5/8" GYP. BOARD ON 2x4 WOOD STUDS.



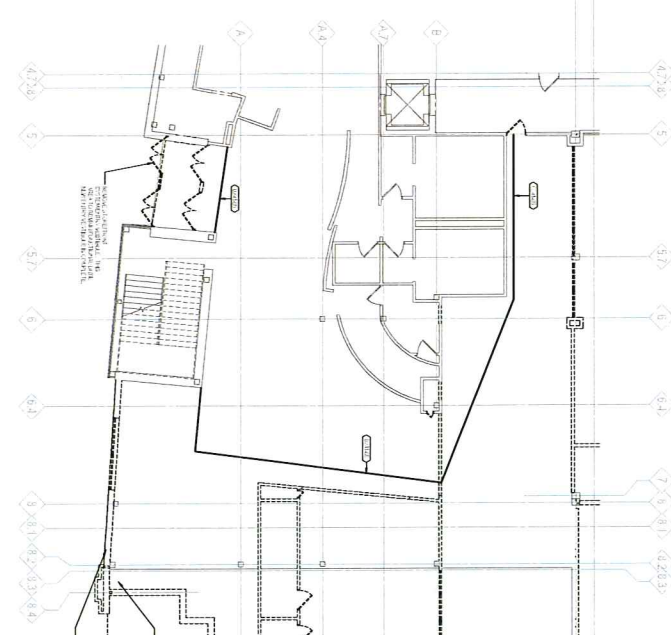
C1 SECOND FLOOR DEMOLITION CEILING PLAN - SUNDANCE CINEMAS



C2 ENLARGED SECOND FLOOR DEMOLITION PLAN - SUNDANCE CINEMAS



A1 FIRST FLOOR DEMOLITION CEILING PLAN - SUNDANCE CINEMAS



A2 ENLARGED FIRST FLOOR DEMOLITION PLAN - SUNDANCE CINEMAS

SHEET NOTES - DEMOLITION AT SUNDANCE

1. DEMOLITION SHALL BE IN ACCORDANCE WITH THE CITY OF MADISON DEMOLITION ORDINANCE AND THE NATIONAL DEMOLITION ASSOCIATION (NDA) STANDARD PRACTICES FOR DEMOLITION.
2. DEMOLITION SHALL BE IN ACCORDANCE WITH THE CITY OF MADISON DEMOLITION ORDINANCE AND THE NATIONAL DEMOLITION ASSOCIATION (NDA) STANDARD PRACTICES FOR DEMOLITION.
3. DEMOLITION SHALL BE IN ACCORDANCE WITH THE CITY OF MADISON DEMOLITION ORDINANCE AND THE NATIONAL DEMOLITION ASSOCIATION (NDA) STANDARD PRACTICES FOR DEMOLITION.
4. DEMOLITION SHALL BE IN ACCORDANCE WITH THE CITY OF MADISON DEMOLITION ORDINANCE AND THE NATIONAL DEMOLITION ASSOCIATION (NDA) STANDARD PRACTICES FOR DEMOLITION.
5. DEMOLITION SHALL BE IN ACCORDANCE WITH THE CITY OF MADISON DEMOLITION ORDINANCE AND THE NATIONAL DEMOLITION ASSOCIATION (NDA) STANDARD PRACTICES FOR DEMOLITION.
6. DEMOLITION SHALL BE IN ACCORDANCE WITH THE CITY OF MADISON DEMOLITION ORDINANCE AND THE NATIONAL DEMOLITION ASSOCIATION (NDA) STANDARD PRACTICES FOR DEMOLITION.
7. DEMOLITION SHALL BE IN ACCORDANCE WITH THE CITY OF MADISON DEMOLITION ORDINANCE AND THE NATIONAL DEMOLITION ASSOCIATION (NDA) STANDARD PRACTICES FOR DEMOLITION.

KEYNOTES PER SHEET

KEYNOTE	DESCRIPTION
1	DEMOLITION SHALL BE IN ACCORDANCE WITH THE CITY OF MADISON DEMOLITION ORDINANCE AND THE NATIONAL DEMOLITION ASSOCIATION (NDA) STANDARD PRACTICES FOR DEMOLITION.
2	DEMOLITION SHALL BE IN ACCORDANCE WITH THE CITY OF MADISON DEMOLITION ORDINANCE AND THE NATIONAL DEMOLITION ASSOCIATION (NDA) STANDARD PRACTICES FOR DEMOLITION.
3	DEMOLITION SHALL BE IN ACCORDANCE WITH THE CITY OF MADISON DEMOLITION ORDINANCE AND THE NATIONAL DEMOLITION ASSOCIATION (NDA) STANDARD PRACTICES FOR DEMOLITION.
4	DEMOLITION SHALL BE IN ACCORDANCE WITH THE CITY OF MADISON DEMOLITION ORDINANCE AND THE NATIONAL DEMOLITION ASSOCIATION (NDA) STANDARD PRACTICES FOR DEMOLITION.
5	DEMOLITION SHALL BE IN ACCORDANCE WITH THE CITY OF MADISON DEMOLITION ORDINANCE AND THE NATIONAL DEMOLITION ASSOCIATION (NDA) STANDARD PRACTICES FOR DEMOLITION.
6	DEMOLITION SHALL BE IN ACCORDANCE WITH THE CITY OF MADISON DEMOLITION ORDINANCE AND THE NATIONAL DEMOLITION ASSOCIATION (NDA) STANDARD PRACTICES FOR DEMOLITION.
7	DEMOLITION SHALL BE IN ACCORDANCE WITH THE CITY OF MADISON DEMOLITION ORDINANCE AND THE NATIONAL DEMOLITION ASSOCIATION (NDA) STANDARD PRACTICES FOR DEMOLITION.

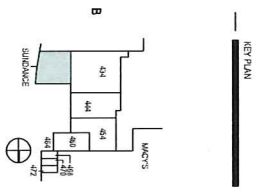
ewa
 appstein urban - architects
 400 EAST WASHINGTON AVENUE
 MADISON, WI 53705
 TEL: 608.261.1111
 FAX: 608.261.1112
 WWW.EWA-ARCHITECTS.COM

PROJECT INFORMATION
HILDALE SHOPPING CENTER RENOVATION PHASE 2
 702 N Middleale Blvd
 Madison, WI 53705

HILDALE DEVELOPMENT
 1000 EAST WASHINGTON AVENUE
 MADISON, WI 53705
 TEL: 608.261.1111
 FAX: 608.261.1112
 WWW.HILDALEDEVELOPMENT.COM

ISSUANCE AND REVISIONS
CONSTRUCTION DOCUMENTS

NO.	DATE	DESCRIPTION



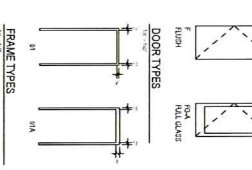
SHEET INFORMATION

PROJECT MANAGER	CC
PROJECT NUMBER	71813
DATE	10/27/2016

ENLARGED DEMOLITION PLANS - SUNDANCE
AD110

HILDALE PHASE 2 - TENANT BUILD OUT

Room No.	Room Name	Area (sq ft)	Construction	Finish	Lighting	HVAC	Other
101	RETAIL	10,000	Standard	Standard	Standard	Standard	Standard
102	RETAIL	10,000	Standard	Standard	Standard	Standard	Standard
103	RETAIL	10,000	Standard	Standard	Standard	Standard	Standard
104	RETAIL	10,000	Standard	Standard	Standard	Standard	Standard
105	RETAIL	10,000	Standard	Standard	Standard	Standard	Standard
106	RETAIL	10,000	Standard	Standard	Standard	Standard	Standard
107	RETAIL	10,000	Standard	Standard	Standard	Standard	Standard
108	RETAIL	10,000	Standard	Standard	Standard	Standard	Standard
109	RETAIL	10,000	Standard	Standard	Standard	Standard	Standard
110	RETAIL	10,000	Standard	Standard	Standard	Standard	Standard
111	RETAIL	10,000	Standard	Standard	Standard	Standard	Standard
112	RETAIL	10,000	Standard	Standard	Standard	Standard	Standard
113	RETAIL	10,000	Standard	Standard	Standard	Standard	Standard
114	RETAIL	10,000	Standard	Standard	Standard	Standard	Standard
115	RETAIL	10,000	Standard	Standard	Standard	Standard	Standard
116	RETAIL	10,000	Standard	Standard	Standard	Standard	Standard
117	RETAIL	10,000	Standard	Standard	Standard	Standard	Standard
118	RETAIL	10,000	Standard	Standard	Standard	Standard	Standard
119	RETAIL	10,000	Standard	Standard	Standard	Standard	Standard
120	RETAIL	10,000	Standard	Standard	Standard	Standard	Standard
121	RETAIL	10,000	Standard	Standard	Standard	Standard	Standard
122	RETAIL	10,000	Standard	Standard	Standard	Standard	Standard
123	RETAIL	10,000	Standard	Standard	Standard	Standard	Standard
124	RETAIL	10,000	Standard	Standard	Standard	Standard	Standard
125	RETAIL	10,000	Standard	Standard	Standard	Standard	Standard
126	RETAIL	10,000	Standard	Standard	Standard	Standard	Standard
127	RETAIL	10,000	Standard	Standard	Standard	Standard	Standard
128	RETAIL	10,000	Standard	Standard	Standard	Standard	Standard
129	RETAIL	10,000	Standard	Standard	Standard	Standard	Standard
130	RETAIL	10,000	Standard	Standard	Standard	Standard	Standard
131	RETAIL	10,000	Standard	Standard	Standard	Standard	Standard
132	RETAIL	10,000	Standard	Standard	Standard	Standard	Standard
133	RETAIL	10,000	Standard	Standard	Standard	Standard	Standard
134	RETAIL	10,000	Standard	Standard	Standard	Standard	Standard
135	RETAIL	10,000	Standard	Standard	Standard	Standard	Standard
136	RETAIL	10,000	Standard	Standard	Standard	Standard	Standard
137	RETAIL	10,000	Standard	Standard	Standard	Standard	Standard
138	RETAIL	10,000	Standard	Standard	Standard	Standard	Standard
139	RETAIL	10,000	Standard	Standard	Standard	Standard	Standard
140	RETAIL	10,000	Standard	Standard	Standard	Standard	Standard
141	RETAIL	10,000	Standard	Standard	Standard	Standard	Standard
142	RETAIL	10,000	Standard	Standard	Standard	Standard	Standard
143	RETAIL	10,000	Standard	Standard	Standard	Standard	Standard
144	RETAIL	10,000	Standard	Standard	Standard	Standard	Standard
145	RETAIL	10,000	Standard	Standard	Standard	Standard	Standard
146	RETAIL	10,000	Standard	Standard	Standard	Standard	Standard
147	RETAIL	10,000	Standard	Standard	Standard	Standard	Standard
148	RETAIL	10,000	Standard	Standard	Standard	Standard	Standard
149	RETAIL	10,000	Standard	Standard	Standard	Standard	Standard
150	RETAIL	10,000	Standard	Standard	Standard	Standard	Standard



DOOR AND FRAME SCHEDULE

DOOR	SIZE		TYPE	MATERIAL	FINISH	GLASS	HOLDING	HANGING	REMARKS
	WIDE	HEIGHT							
101	36"	80"	SW	ALUM	BRN	GL	1"	1"	
102	36"	80"	SW	ALUM	BRN	GL	1"	1"	
103	36"	80"	SW	ALUM	BRN	GL	1"	1"	
104	36"	80"	SW	ALUM	BRN	GL	1"	1"	
105	36"	80"	SW	ALUM	BRN	GL	1"	1"	
106	36"	80"	SW	ALUM	BRN	GL	1"	1"	
107	36"	80"	SW	ALUM	BRN	GL	1"	1"	
108	36"	80"	SW	ALUM	BRN	GL	1"	1"	
109	36"	80"	SW	ALUM	BRN	GL	1"	1"	
110	36"	80"	SW	ALUM	BRN	GL	1"	1"	
111	36"	80"	SW	ALUM	BRN	GL	1"	1"	
112	36"	80"	SW	ALUM	BRN	GL	1"	1"	
113	36"	80"	SW	ALUM	BRN	GL	1"	1"	
114	36"	80"	SW	ALUM	BRN	GL	1"	1"	
115	36"	80"	SW	ALUM	BRN	GL	1"	1"	
116	36"	80"	SW	ALUM	BRN	GL	1"	1"	
117	36"	80"	SW	ALUM	BRN	GL	1"	1"	
118	36"	80"	SW	ALUM	BRN	GL	1"	1"	
119	36"	80"	SW	ALUM	BRN	GL	1"	1"	
120	36"	80"	SW	ALUM	BRN	GL	1"	1"	
121	36"	80"	SW	ALUM	BRN	GL	1"	1"	
122	36"	80"	SW	ALUM	BRN	GL	1"	1"	
123	36"	80"	SW	ALUM	BRN	GL	1"	1"	
124	36"	80"	SW	ALUM	BRN	GL	1"	1"	
125	36"	80"	SW	ALUM	BRN	GL	1"	1"	
126	36"	80"	SW	ALUM	BRN	GL	1"	1"	
127	36"	80"	SW	ALUM	BRN	GL	1"	1"	
128	36"	80"	SW	ALUM	BRN	GL	1"	1"	
129	36"	80"	SW	ALUM	BRN	GL	1"	1"	
130	36"	80"	SW	ALUM	BRN	GL	1"	1"	
131	36"	80"	SW	ALUM	BRN	GL	1"	1"	
132	36"	80"	SW	ALUM	BRN	GL	1"	1"	
133	36"	80"	SW	ALUM	BRN	GL	1"	1"	
134	36"	80"	SW	ALUM	BRN	GL	1"	1"	
135	36"	80"	SW	ALUM	BRN	GL	1"	1"	
136	36"	80"	SW	ALUM	BRN	GL	1"	1"	
137	36"	80"	SW	ALUM	BRN	GL	1"	1"	
138	36"	80"	SW	ALUM	BRN	GL	1"	1"	
139	36"	80"	SW	ALUM	BRN	GL	1"	1"	
140	36"	80"	SW	ALUM	BRN	GL	1"	1"	
141	36"	80"	SW	ALUM	BRN	GL	1"	1"	
142	36"	80"	SW	ALUM	BRN	GL	1"	1"	
143	36"	80"	SW	ALUM	BRN	GL	1"	1"	
144	36"	80"	SW	ALUM	BRN	GL	1"	1"	
145	36"	80"	SW	ALUM	BRN	GL	1"	1"	
146	36"	80"	SW	ALUM	BRN	GL	1"	1"	
147	36"	80"	SW	ALUM	BRN	GL	1"	1"	
148	36"	80"	SW	ALUM	BRN	GL	1"	1"	
149	36"	80"	SW	ALUM	BRN	GL	1"	1"	
150	36"	80"	SW	ALUM	BRN	GL	1"	1"	

DOOR AND FRAME SCHEDULE GENERAL NOTES AND REMARKS

- ALL DOORS TO BE INSTALLED WITH 1" GLASS AND 1" HOLDING.
- ALL DOORS TO BE INSTALLED WITH 1" HANGING.
- ALL DOORS TO BE INSTALLED WITH 1" FINISH.
- ALL DOORS TO BE INSTALLED WITH 1" MATERIAL.
- ALL DOORS TO BE INSTALLED WITH 1" TYPE.
- ALL DOORS TO BE INSTALLED WITH 1" SIZE.
- ALL DOORS TO BE INSTALLED WITH 1" DOOR.

KEYNOTES PER SHEET

1. ALL WORK TO BE IN ACCORDANCE WITH THE LATEST EDITIONS OF THE BUILDING CODES AND STANDARDS.

2. ALL WORK TO BE IN ACCORDANCE WITH THE LATEST EDITIONS OF THE MANUFACTURER'S INSTRUCTIONS.

3. ALL WORK TO BE IN ACCORDANCE WITH THE LATEST EDITIONS OF THE DESIGNER'S SPECIFICATIONS.

4. ALL WORK TO BE IN ACCORDANCE WITH THE LATEST EDITIONS OF THE CONTRACT DOCUMENTS.

5. ALL WORK TO BE IN ACCORDANCE WITH THE LATEST EDITIONS OF THE PROJECT MANUAL.

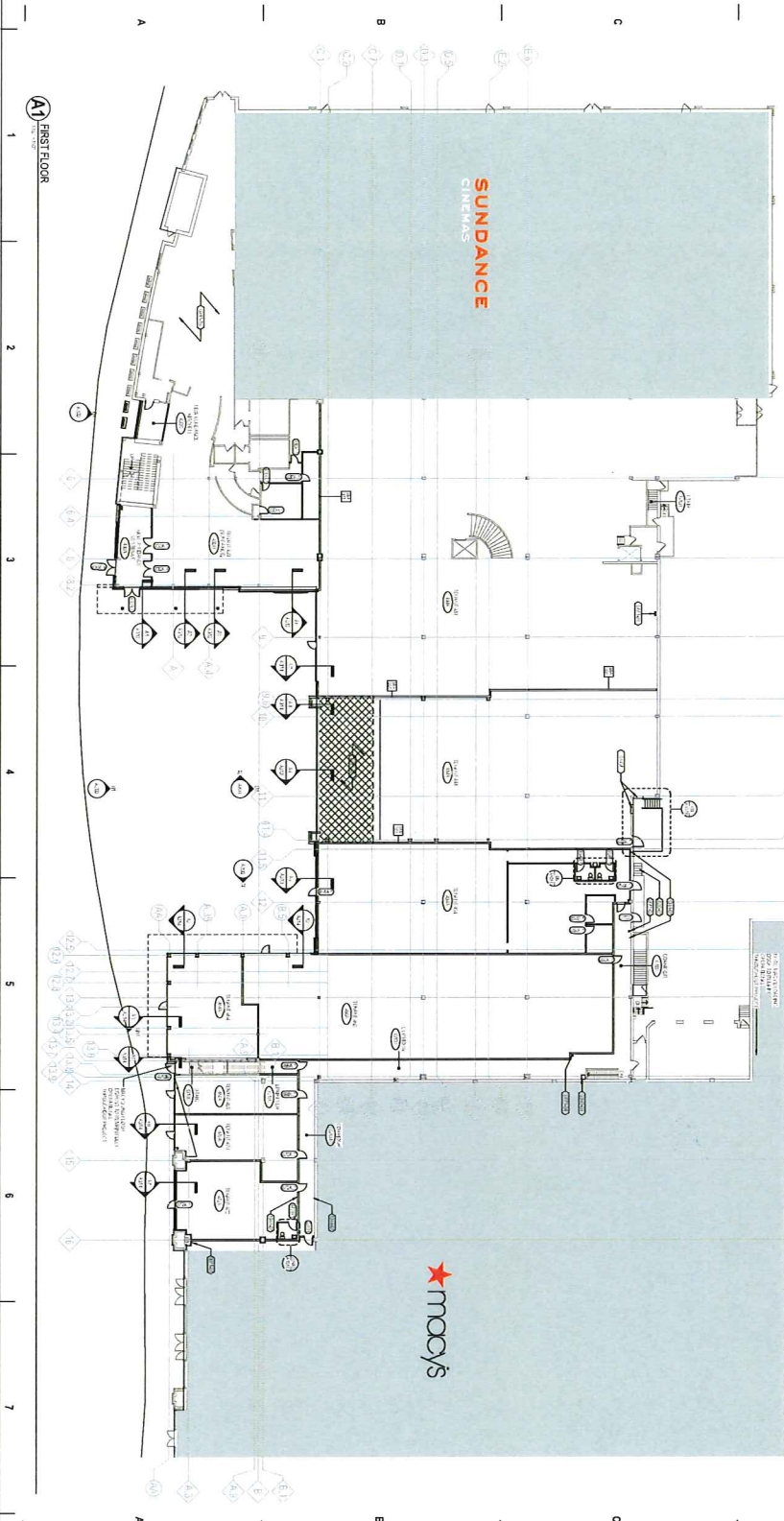
6. ALL WORK TO BE IN ACCORDANCE WITH THE LATEST EDITIONS OF THE SCHEDULE OF VALUES.

7. ALL WORK TO BE IN ACCORDANCE WITH THE LATEST EDITIONS OF THE GENERAL CONDITIONS.

8. ALL WORK TO BE IN ACCORDANCE WITH THE LATEST EDITIONS OF THE SUPPLEMENTAL CONDITIONS.

9. ALL WORK TO BE IN ACCORDANCE WITH THE LATEST EDITIONS OF THE SPECIAL CONDITIONS.

10. ALL WORK TO BE IN ACCORDANCE WITH THE LATEST EDITIONS OF THE ADDENDUMS.



KEY PLAN

SHEET INFORMATION

PROJECT NUMBER: 02
 PROJECT NAME: HILDALE
 DATE: 01/15/2014
 SHEET: 01/15/2014

OVERALL FIRST FLOOR PLAN AND DOOR SCHEDULE

A101



epstein uhlen architects
 211 N. KANISKA AVENUE
 MADISON, WI 53705
 TEL: 608.261.1111
 FAX: 608.261.1112
 WWW.EUARCHITECTS.COM

HILDALE PHASE 2 - TENANT BUILD OUT

702 N. MICHIGAN BLVD
 MADISON, WI 53705

WSD DEVELOPMENT
 ARCHITECTURAL FIRM
 1000 W. MICHIGAN BLVD
 MADISON, WI 53705

RESOURCES AND REFERENCES

CONSTRUCTION DOCUMENTS

DATE: 01/15/2014

DESCRIPTION: 01/15/2014



opstein uhri : architects

223 N. STATE STREET, SUITE 200
MADISON, WI 53705
TEL: 608.261.1111
WWW.EUOARCHITECTS.COM

PROJECT INFORMATION
HILLDALE SHOPPING
CENTER RENOVATION
PHASE 2
702 N. Minkale Blvd
Madison, WI 53705



HILLDALE
DEVELOPMENT
1000 HILLDALE DRIVE
MADISON, WI 53705

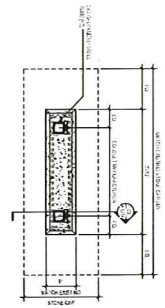
ISSUANCE AND REVISIONS

CONSTRUCTION DOCUMENTS

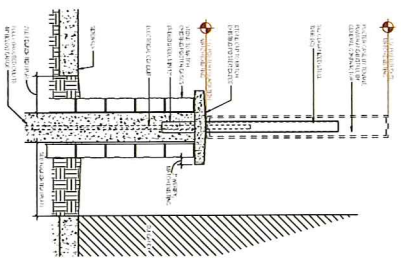
NO.	DATE	DESCRIPTION

SHEET NOTES - FLOOR PLAN	
1.	ALL DIMENSIONS UNLESS OTHERWISE NOTED.
2.	ALL FINISHES TO BE AS SHOWN ON FINISH SCHEDULE.
3.	ALL WORK TO BE IN ACCORDANCE WITH THE 2015 INTERNATIONAL BUILDING CODES AND ALL APPLICABLE LOCAL ORDINANCES.
4.	ALL WORK TO BE IN ACCORDANCE WITH THE 2015 INTERNATIONAL MECHANICAL AND ELECTRICAL CODES AND ALL APPLICABLE LOCAL ORDINANCES.
5.	ALL WORK TO BE IN ACCORDANCE WITH THE 2015 INTERNATIONAL PLUMBING AND MECHANICAL CODES AND ALL APPLICABLE LOCAL ORDINANCES.
6.	ALL WORK TO BE IN ACCORDANCE WITH THE 2015 INTERNATIONAL FIRE AND SAFETY CODES AND ALL APPLICABLE LOCAL ORDINANCES.
7.	ALL WORK TO BE IN ACCORDANCE WITH THE 2015 INTERNATIONAL ENERGY CONSERVATION CODES AND ALL APPLICABLE LOCAL ORDINANCES.
8.	ALL WORK TO BE IN ACCORDANCE WITH THE 2015 INTERNATIONAL SMOKE AND ALARM CODES AND ALL APPLICABLE LOCAL ORDINANCES.
9.	ALL WORK TO BE IN ACCORDANCE WITH THE 2015 INTERNATIONAL ACCESSIBILITY STANDARDS AND ALL APPLICABLE LOCAL ORDINANCES.
10.	ALL WORK TO BE IN ACCORDANCE WITH THE 2015 INTERNATIONAL GREEN BUILDING CODES AND ALL APPLICABLE LOCAL ORDINANCES.

KEYNOTES PER SHEET	
1.	EXISTING
2.	NEW
3.	REMOVE
4.	ALTER
5.	AS SHOWN
6.	AS NOTED
7.	AS SHOWN ON OTHER SHEETS
8.	AS SHOWN ON OTHER SHEETS AND AS NOTED
9.	AS SHOWN ON OTHER SHEETS AND AS NOTED AND AS SHOWN ON OTHER SHEETS
10.	AS SHOWN ON OTHER SHEETS AND AS NOTED AND AS SHOWN ON OTHER SHEETS AND AS SHOWN ON OTHER SHEETS



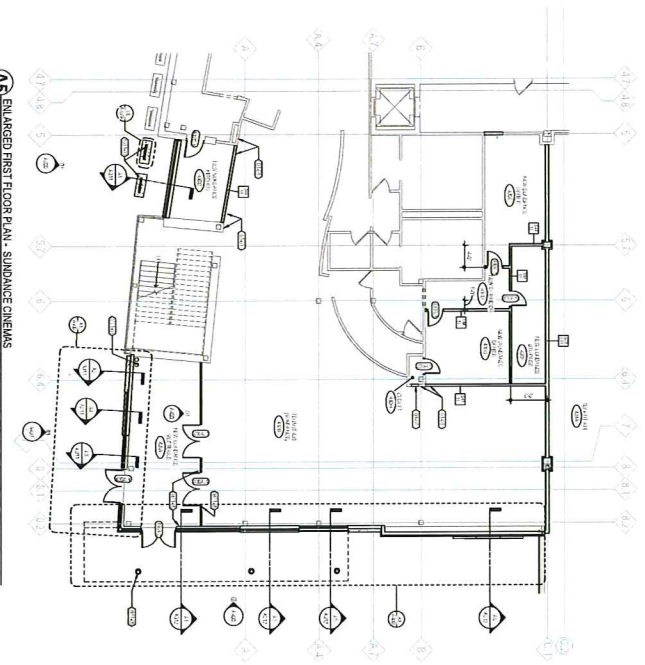
C6 POSTER CASE DETAIL PLAN



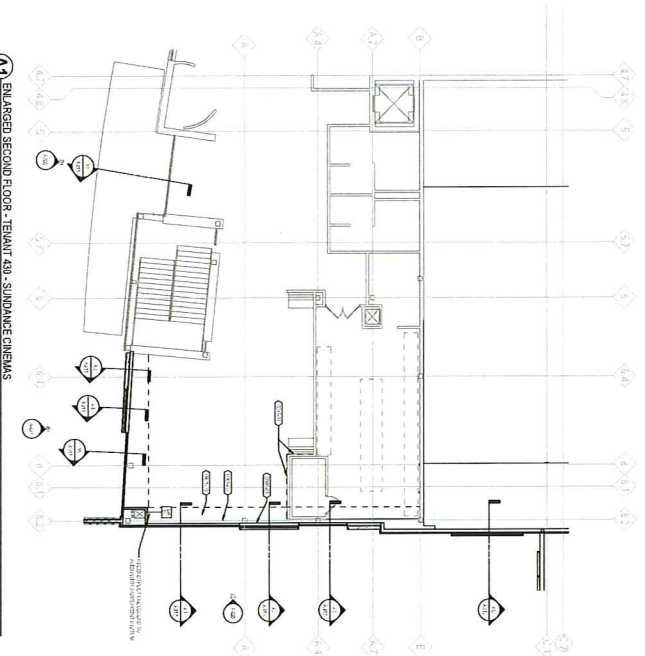
C5 POSTER CASE DETAIL SECTION



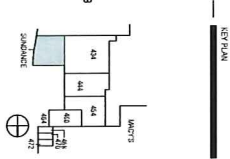
C3 EXISTING POSTER CASE



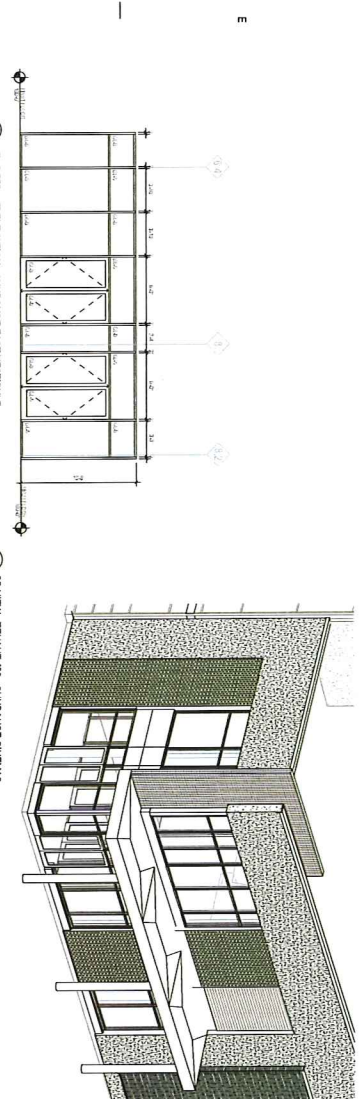
A5 ENLARGED FIRST FLOOR PLAN - SUNDANCE CINEMAS



A1 ENLARGED SECOND FLOOR - THEATRE 439 - SUNDANCE CINEMAS



PROJECT NUMBER: CD
 PROJECT NUMBER: 77012
 DATE: 07/2016
 ENLARGED PLANS - SUNDANCE CINEMAS
A101A

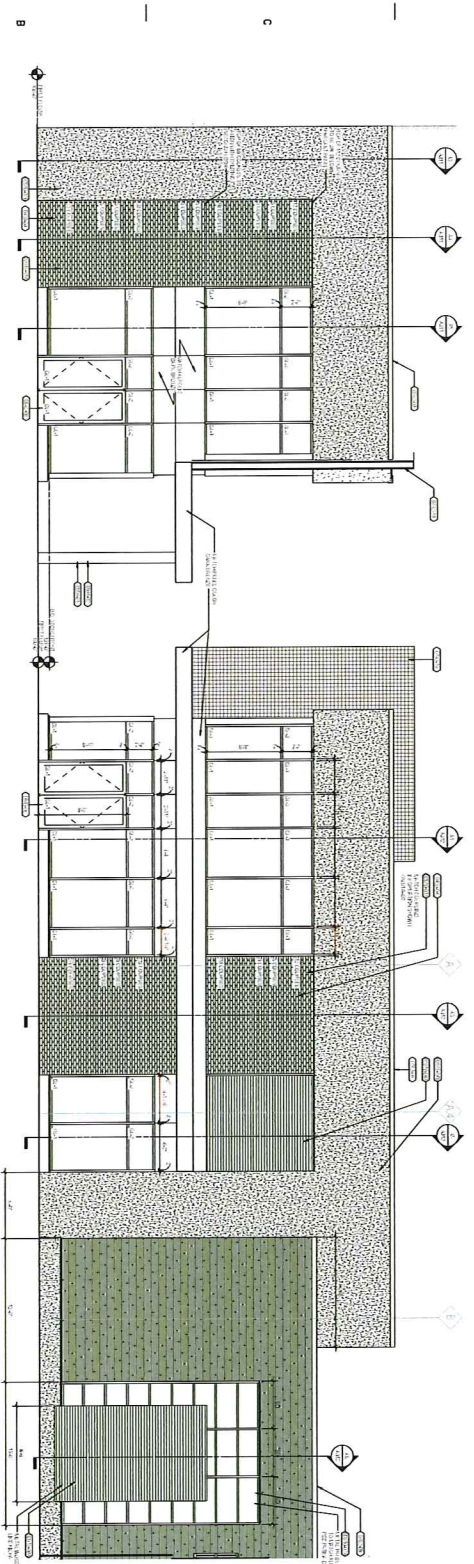


D1 STOREFRONT ELEVATION - SUNDANCE EAST VESTIBULE

D3 3D VIEW - TYPICAL 430 - SUNDANCE CINEMAS

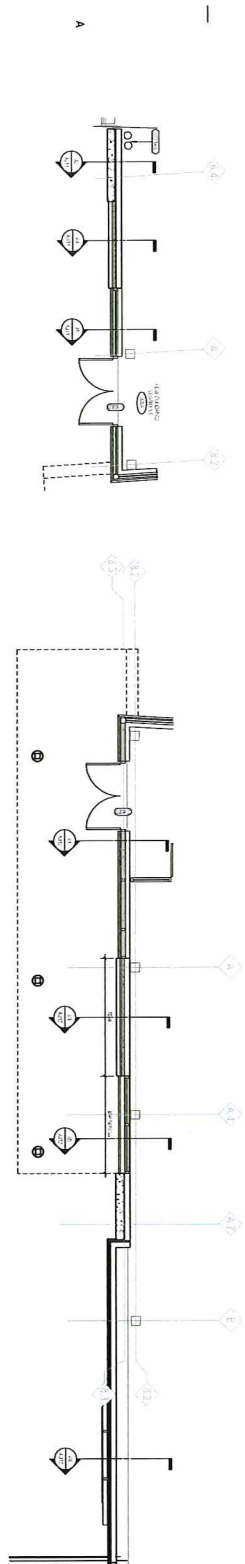
KEYNOTES PER SHEET	
1	SEE SHEET A4000 FOR ENLARGED VIEWS
2	SEE SHEET A4000 FOR ENLARGED VIEWS
3	SEE SHEET A4000 FOR ENLARGED VIEWS
4	SEE SHEET A4000 FOR ENLARGED VIEWS
5	SEE SHEET A4000 FOR ENLARGED VIEWS
6	SEE SHEET A4000 FOR ENLARGED VIEWS
7	SEE SHEET A4000 FOR ENLARGED VIEWS

EXTERIOR MATERIAL LEGEND	
	CONCRETE
	CLAY BRICK
	GLAZED CERAMIC TILE
	ALUMINUM CLADDING
	GLASS
	WOOD
	PAINT
	ROOFING
	LANDSCAPE



B1 STOREFRONT ELEVATION - SUNDANCE EAST

B3 STOREFRONT ELEVATION - SUNDANCE NORTH



A1 ENLARGED ENTRY - SUNDANCE CINEMAS EAST

A3 ENLARGED ENTRY - SUNDANCE CINEMAS NORTH

euo
 epstein uhen : architects
 222 N. STATE STREET, SUITE 200
 MADISON, WI 53702
 TEL: 608.261.1111
 FAX: 608.261.1112
 WWW.EUOARCHITECTS.COM

HILDDALE
 DEVELOPMENT
 1000 N. STATE STREET, SUITE 200
 MADISON, WI 53702
 TEL: 608.261.1111
 FAX: 608.261.1112
 WWW.HILDDALE.COM

PROJECT INFORMATION
 HILDDALE SHOPPING
 CENTER RENOVATION
 PHASE 2
 702 N. Main St
 Madison, WI 53705

ISSUING AND REVISIONS
 CONSTRUCTION DOCUMENTS

NO.	DATE	DESCRIPTION

SHEET INFORMATION

PROJECT NUMBER: CD
 PROJECT NUMBER: 21012
 DATE: 10/2016
 DRAWN BY: WY/MLC
 ENLARGED VIEWS -
 SUNDANCE
 CINEMAS
A4000



opplein uhm | architects

702 N MADISON BLVD
MADISON, WI 53705
TEL: 608.261.1111
WWW.EUOARCHITECTS.COM

JDR
ENGINEERING INC
2525 VANDERHARVE
MADISON, WI 53711
TEL: 608.261.1111
WWW.JDRINC.COM

PROJECT INFORMATION
HILDALE SHOPPING CENTER RENOVATION PHASE 2
702 N MADISON Blvd
Madison, WI 53705

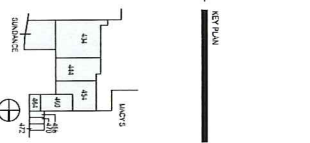
HILDALE
DEVELOPMENT
2000 HILDALE BLVD
MADISON, WI 53713
TEL: 608.261.1111
WWW.HILDALEDEVELOPMENT.COM

ISSUES AND REVISIONS
CONSTRUCTION DOCUMENTS

NO.	DATE	DESCRIPTION



MECHANICAL PLAN



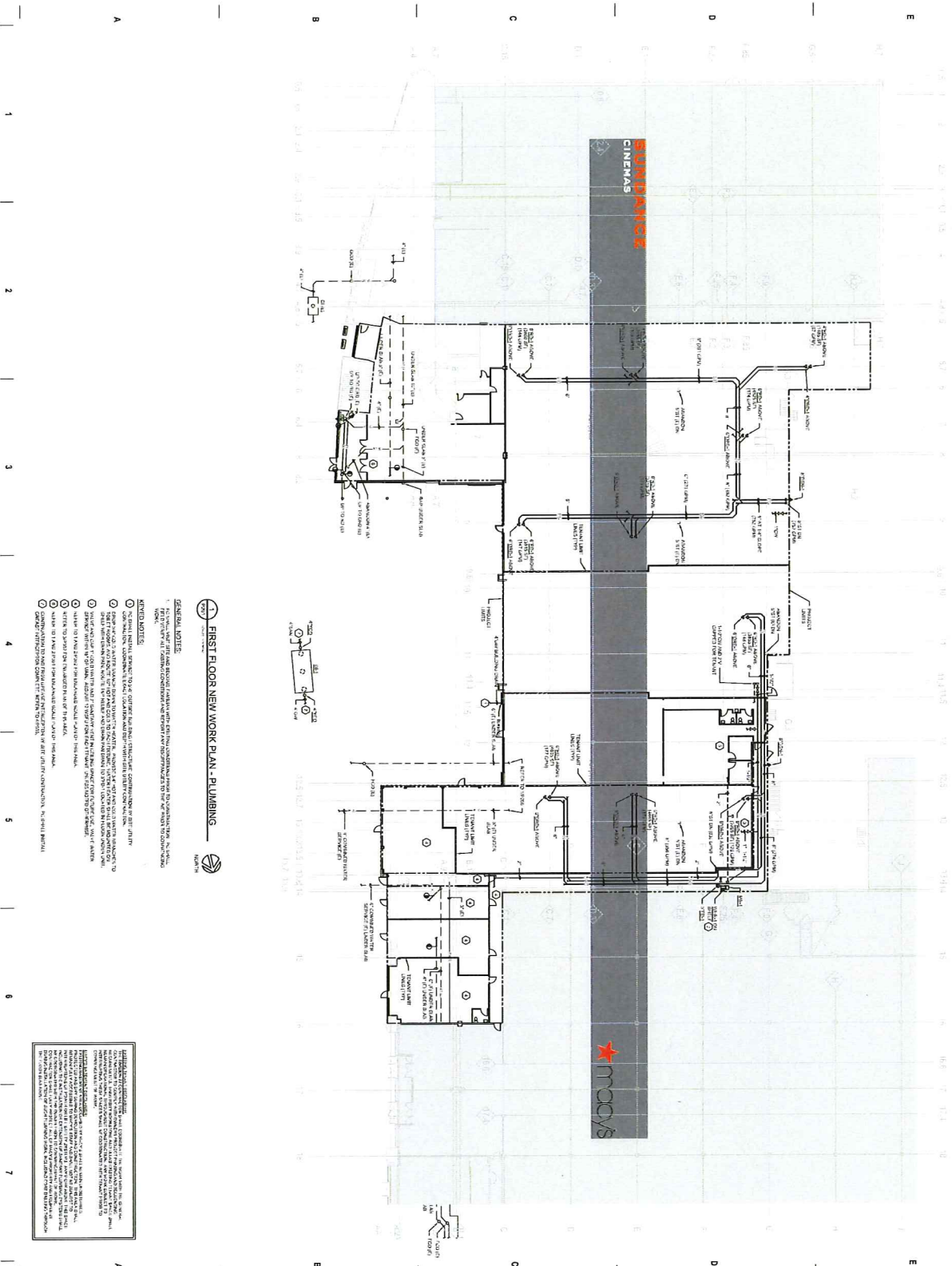
LEGEND

SHEET INFORMATION

PROJECT MANAGER	CG
PROJECT NUMBER	71905
DATE	07/2018

FIRST FLOOR NEW WORK PLAN - PUMPING

P201



FIRST FLOOR NEW WORK PLAN - PUMPING

GENERAL NOTES:

1. THE OWNER SHALL BE RESPONSIBLE FOR OBTAINING ALL NECESSARY PERMITS AND APPROVALS FROM ALL APPLICABLE AGENCIES AND AUTHORITIES.
2. THE CONTRACTOR SHALL BE RESPONSIBLE FOR OBTAINING ALL NECESSARY PERMITS AND APPROVALS FROM ALL APPLICABLE AGENCIES AND AUTHORITIES.
3. THE CONTRACTOR SHALL BE RESPONSIBLE FOR OBTAINING ALL NECESSARY PERMITS AND APPROVALS FROM ALL APPLICABLE AGENCIES AND AUTHORITIES.
4. THE CONTRACTOR SHALL BE RESPONSIBLE FOR OBTAINING ALL NECESSARY PERMITS AND APPROVALS FROM ALL APPLICABLE AGENCIES AND AUTHORITIES.
5. THE CONTRACTOR SHALL BE RESPONSIBLE FOR OBTAINING ALL NECESSARY PERMITS AND APPROVALS FROM ALL APPLICABLE AGENCIES AND AUTHORITIES.
6. THE CONTRACTOR SHALL BE RESPONSIBLE FOR OBTAINING ALL NECESSARY PERMITS AND APPROVALS FROM ALL APPLICABLE AGENCIES AND AUTHORITIES.
7. THE CONTRACTOR SHALL BE RESPONSIBLE FOR OBTAINING ALL NECESSARY PERMITS AND APPROVALS FROM ALL APPLICABLE AGENCIES AND AUTHORITIES.
8. THE CONTRACTOR SHALL BE RESPONSIBLE FOR OBTAINING ALL NECESSARY PERMITS AND APPROVALS FROM ALL APPLICABLE AGENCIES AND AUTHORITIES.
9. THE CONTRACTOR SHALL BE RESPONSIBLE FOR OBTAINING ALL NECESSARY PERMITS AND APPROVALS FROM ALL APPLICABLE AGENCIES AND AUTHORITIES.
10. THE CONTRACTOR SHALL BE RESPONSIBLE FOR OBTAINING ALL NECESSARY PERMITS AND APPROVALS FROM ALL APPLICABLE AGENCIES AND AUTHORITIES.

NOTES:

1. THE CONTRACTOR SHALL BE RESPONSIBLE FOR OBTAINING ALL NECESSARY PERMITS AND APPROVALS FROM ALL APPLICABLE AGENCIES AND AUTHORITIES.
2. THE CONTRACTOR SHALL BE RESPONSIBLE FOR OBTAINING ALL NECESSARY PERMITS AND APPROVALS FROM ALL APPLICABLE AGENCIES AND AUTHORITIES.
3. THE CONTRACTOR SHALL BE RESPONSIBLE FOR OBTAINING ALL NECESSARY PERMITS AND APPROVALS FROM ALL APPLICABLE AGENCIES AND AUTHORITIES.
4. THE CONTRACTOR SHALL BE RESPONSIBLE FOR OBTAINING ALL NECESSARY PERMITS AND APPROVALS FROM ALL APPLICABLE AGENCIES AND AUTHORITIES.
5. THE CONTRACTOR SHALL BE RESPONSIBLE FOR OBTAINING ALL NECESSARY PERMITS AND APPROVALS FROM ALL APPLICABLE AGENCIES AND AUTHORITIES.
6. THE CONTRACTOR SHALL BE RESPONSIBLE FOR OBTAINING ALL NECESSARY PERMITS AND APPROVALS FROM ALL APPLICABLE AGENCIES AND AUTHORITIES.
7. THE CONTRACTOR SHALL BE RESPONSIBLE FOR OBTAINING ALL NECESSARY PERMITS AND APPROVALS FROM ALL APPLICABLE AGENCIES AND AUTHORITIES.
8. THE CONTRACTOR SHALL BE RESPONSIBLE FOR OBTAINING ALL NECESSARY PERMITS AND APPROVALS FROM ALL APPLICABLE AGENCIES AND AUTHORITIES.
9. THE CONTRACTOR SHALL BE RESPONSIBLE FOR OBTAINING ALL NECESSARY PERMITS AND APPROVALS FROM ALL APPLICABLE AGENCIES AND AUTHORITIES.
10. THE CONTRACTOR SHALL BE RESPONSIBLE FOR OBTAINING ALL NECESSARY PERMITS AND APPROVALS FROM ALL APPLICABLE AGENCIES AND AUTHORITIES.



opstein | when : architects
1000 EAST WISCONSIN AVENUE
MILWAUKEE, WI 53232
PH: 414.224.2222
WWW.EUOARCHITECTS.COM

JDR
ENGINEERING, INC.
3525 WISCONSIN DRIVE
MILWAUKEE, WI 53211
PH: 414.224.2222
WWW.JDRINC.COM

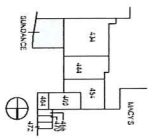
PROJECT INFORMATION
HILLDALE SHOPPING CENTER RENOVATION PHASE 2
702 N. Midvale Blvd
Madison, WI 53705



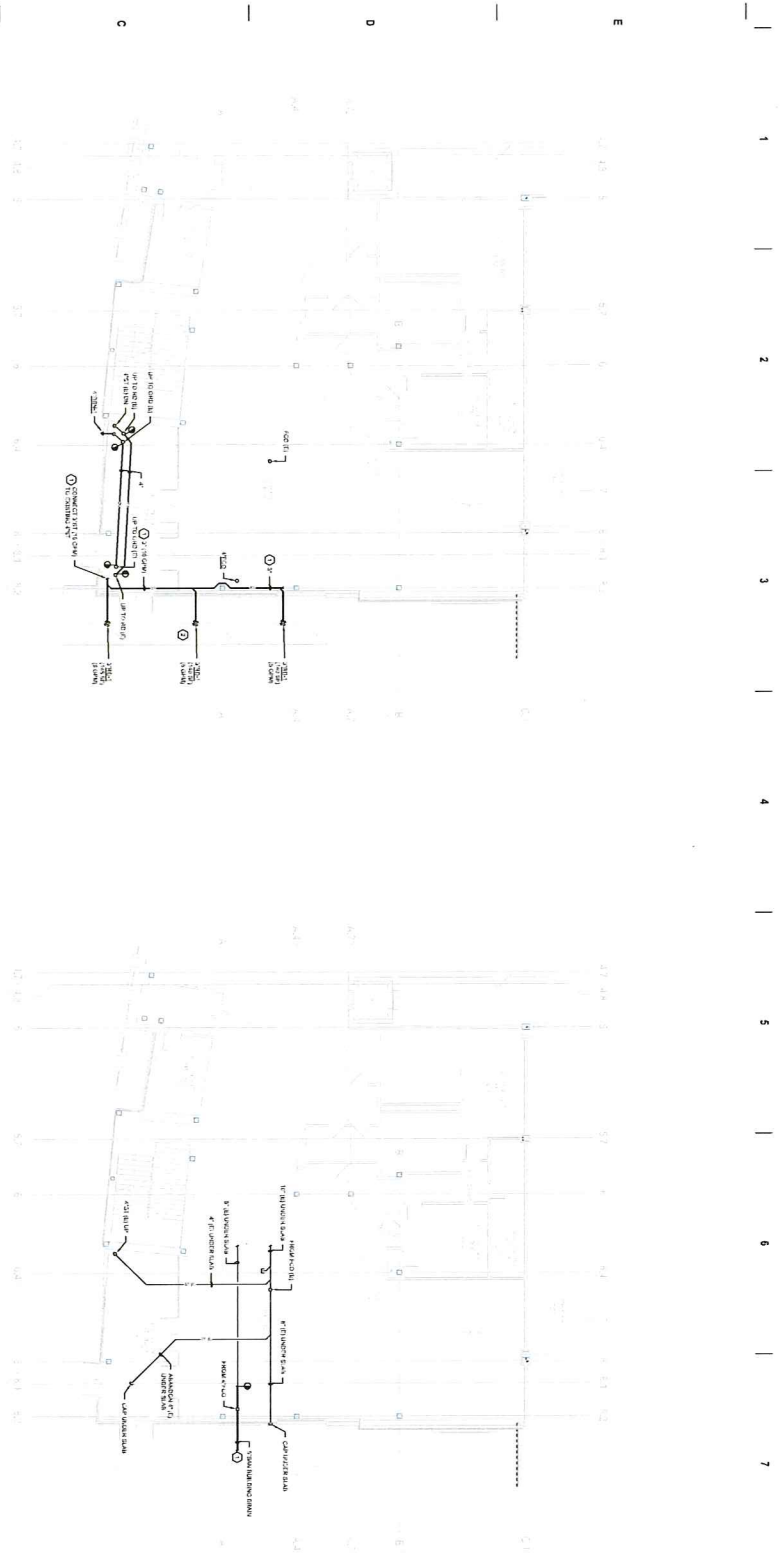
WSD DEVELOPMENT
3000 LINDEN BLVD
MILWAUKEE, WI 53224
PH: 414.224.2222
WWW.WSDDEVELOPMENT.COM

ISSUANCE AND REVISIONS
CONSTRUCTION DOCUMENTS

1 | DATE | REVISION



PROJECT NUMBER: CG
PROJECT NUMBER: 71912
DATE: 10/17/2018
ENLARGED PLANS - TENANT 430 - PLUMBING
P301



ENLARGED NEW WORK FIRST FLOOR PLAN - TENANT 430 - PLUMBING

GENERAL NOTE:
1. ALL WORK SHALL BE IN ACCORDANCE WITH THE LATEST EDITIONS OF THE NATIONAL PLUMBING CODE AND THE LATEST EDITIONS OF THE INTERNATIONAL MECHANICAL CODE.
2. ALL WORK SHALL BE IN ACCORDANCE WITH THE LATEST EDITIONS OF THE NATIONAL ELECTRICAL CODE AND THE LATEST EDITIONS OF THE INTERNATIONAL ELECTRIC CODE.
3. ALL WORK SHALL BE IN ACCORDANCE WITH THE LATEST EDITIONS OF THE NATIONAL FIRE PROTECTION ASSOCIATION'S NFPA 96 AND THE LATEST EDITIONS OF THE NATIONAL FIRE PROTECTION ASSOCIATION'S NFPA 70.
4. ALL WORK SHALL BE IN ACCORDANCE WITH THE LATEST EDITIONS OF THE NATIONAL FIRE PROTECTION ASSOCIATION'S NFPA 13 AND THE LATEST EDITIONS OF THE NATIONAL FIRE PROTECTION ASSOCIATION'S NFPA 25.
5. ALL WORK SHALL BE IN ACCORDANCE WITH THE LATEST EDITIONS OF THE NATIONAL FIRE PROTECTION ASSOCIATION'S NFPA 220 AND THE LATEST EDITIONS OF THE NATIONAL FIRE PROTECTION ASSOCIATION'S NFPA 201.
6. ALL WORK SHALL BE IN ACCORDANCE WITH THE LATEST EDITIONS OF THE NATIONAL FIRE PROTECTION ASSOCIATION'S NFPA 101 AND THE LATEST EDITIONS OF THE NATIONAL FIRE PROTECTION ASSOCIATION'S NFPA 101A.
7. ALL WORK SHALL BE IN ACCORDANCE WITH THE LATEST EDITIONS OF THE NATIONAL FIRE PROTECTION ASSOCIATION'S NFPA 101B AND THE LATEST EDITIONS OF THE NATIONAL FIRE PROTECTION ASSOCIATION'S NFPA 101C.
8. ALL WORK SHALL BE IN ACCORDANCE WITH THE LATEST EDITIONS OF THE NATIONAL FIRE PROTECTION ASSOCIATION'S NFPA 101D AND THE LATEST EDITIONS OF THE NATIONAL FIRE PROTECTION ASSOCIATION'S NFPA 101E.
9. ALL WORK SHALL BE IN ACCORDANCE WITH THE LATEST EDITIONS OF THE NATIONAL FIRE PROTECTION ASSOCIATION'S NFPA 101F AND THE LATEST EDITIONS OF THE NATIONAL FIRE PROTECTION ASSOCIATION'S NFPA 101G.
10. ALL WORK SHALL BE IN ACCORDANCE WITH THE LATEST EDITIONS OF THE NATIONAL FIRE PROTECTION ASSOCIATION'S NFPA 101H AND THE LATEST EDITIONS OF THE NATIONAL FIRE PROTECTION ASSOCIATION'S NFPA 101I.
11. ALL WORK SHALL BE IN ACCORDANCE WITH THE LATEST EDITIONS OF THE NATIONAL FIRE PROTECTION ASSOCIATION'S NFPA 101J AND THE LATEST EDITIONS OF THE NATIONAL FIRE PROTECTION ASSOCIATION'S NFPA 101K.
12. ALL WORK SHALL BE IN ACCORDANCE WITH THE LATEST EDITIONS OF THE NATIONAL FIRE PROTECTION ASSOCIATION'S NFPA 101L AND THE LATEST EDITIONS OF THE NATIONAL FIRE PROTECTION ASSOCIATION'S NFPA 101M.
13. ALL WORK SHALL BE IN ACCORDANCE WITH THE LATEST EDITIONS OF THE NATIONAL FIRE PROTECTION ASSOCIATION'S NFPA 101N AND THE LATEST EDITIONS OF THE NATIONAL FIRE PROTECTION ASSOCIATION'S NFPA 101O.
14. ALL WORK SHALL BE IN ACCORDANCE WITH THE LATEST EDITIONS OF THE NATIONAL FIRE PROTECTION ASSOCIATION'S NFPA 101P AND THE LATEST EDITIONS OF THE NATIONAL FIRE PROTECTION ASSOCIATION'S NFPA 101Q.
15. ALL WORK SHALL BE IN ACCORDANCE WITH THE LATEST EDITIONS OF THE NATIONAL FIRE PROTECTION ASSOCIATION'S NFPA 101R AND THE LATEST EDITIONS OF THE NATIONAL FIRE PROTECTION ASSOCIATION'S NFPA 101S.
16. ALL WORK SHALL BE IN ACCORDANCE WITH THE LATEST EDITIONS OF THE NATIONAL FIRE PROTECTION ASSOCIATION'S NFPA 101T AND THE LATEST EDITIONS OF THE NATIONAL FIRE PROTECTION ASSOCIATION'S NFPA 101U.
17. ALL WORK SHALL BE IN ACCORDANCE WITH THE LATEST EDITIONS OF THE NATIONAL FIRE PROTECTION ASSOCIATION'S NFPA 101V AND THE LATEST EDITIONS OF THE NATIONAL FIRE PROTECTION ASSOCIATION'S NFPA 101W.
18. ALL WORK SHALL BE IN ACCORDANCE WITH THE LATEST EDITIONS OF THE NATIONAL FIRE PROTECTION ASSOCIATION'S NFPA 101X AND THE LATEST EDITIONS OF THE NATIONAL FIRE PROTECTION ASSOCIATION'S NFPA 101Y.
19. ALL WORK SHALL BE IN ACCORDANCE WITH THE LATEST EDITIONS OF THE NATIONAL FIRE PROTECTION ASSOCIATION'S NFPA 101Z AND THE LATEST EDITIONS OF THE NATIONAL FIRE PROTECTION ASSOCIATION'S NFPA 101AA.
20. ALL WORK SHALL BE IN ACCORDANCE WITH THE LATEST EDITIONS OF THE NATIONAL FIRE PROTECTION ASSOCIATION'S NFPA 101AB AND THE LATEST EDITIONS OF THE NATIONAL FIRE PROTECTION ASSOCIATION'S NFPA 101AC.

1 2 3 4 5 6 7
A
A
A



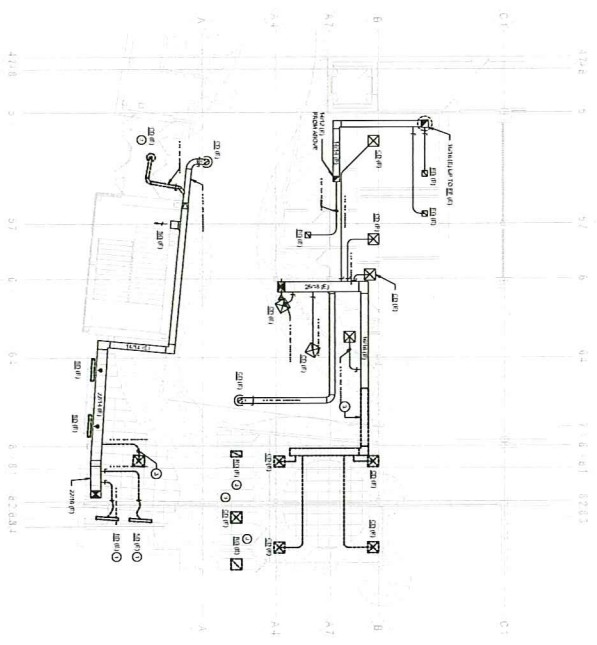
opplein Chen : architects
 1111 SOUTH MAIN STREET
 MADISON, WI 53703
 608.261.1111
 www.oppleinchen.com

JDR
 ENGINEERING, INC.
 3525 SHELDON DRIVE
 MADISON, WI 53711
 608.261.1111
 www.jdrinc.com

PROJECT INFORMATION
HILDALE SHOPPING CENTER RENOVATION PHASE 2
 702 N Midvale Blvd
 Madison, WI 53705

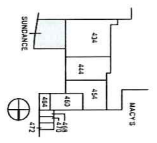
HILDALE
 DEVELOPMENT
 2000 N Midvale Blvd
 Madison, WI 53705
 608.261.1111
 www.hildale.com

ISSUANCE AND REVISIONS
 CONSTRUCTION DOCUMENTS
 1 | DATE | REVISION



ENLARGED DEMOLITION FIRST FLOOR PLAN - SUNDANCE CINEMAS - HVAC

- GENERAL DEMOLITION NOTES:**
1. DEMOLITION SHALL BE IN ACCORDANCE WITH THE CITY OF MADISON DEMOLITION ORDINANCE AND THE NATIONAL DEMOLITION ASSOCIATION (NDA) STANDARD PRACTICES.
 2. DEMOLITION SHALL BE IN ACCORDANCE WITH THE CITY OF MADISON DEMOLITION ORDINANCE AND THE NATIONAL DEMOLITION ASSOCIATION (NDA) STANDARD PRACTICES.
 3. DEMOLITION SHALL BE IN ACCORDANCE WITH THE CITY OF MADISON DEMOLITION ORDINANCE AND THE NATIONAL DEMOLITION ASSOCIATION (NDA) STANDARD PRACTICES.
- DEMOLITION KEYNOTES:**
- DEMOLITION SHALL BE IN ACCORDANCE WITH THE CITY OF MADISON DEMOLITION ORDINANCE AND THE NATIONAL DEMOLITION ASSOCIATION (NDA) STANDARD PRACTICES.
 - DEMOLITION SHALL BE IN ACCORDANCE WITH THE CITY OF MADISON DEMOLITION ORDINANCE AND THE NATIONAL DEMOLITION ASSOCIATION (NDA) STANDARD PRACTICES.
 - DEMOLITION SHALL BE IN ACCORDANCE WITH THE CITY OF MADISON DEMOLITION ORDINANCE AND THE NATIONAL DEMOLITION ASSOCIATION (NDA) STANDARD PRACTICES.



PROJECT INFORMATION
 PROJECT NUMBER: 7103D
 DATE: 10/2018
 PROJECT NUMBER: 7103D
 DATE: 10/2018

ENLARGED PLANS - DEMO - SUNDANCE CINEMAS - HVAC

M300



opstein Urban | architects

1117 EAST CENTER STREET
MADISON, WI 53703
TEL: 608.261.5151
WWW.OPSTEINURBAN.COM



JDR
ENGINEERING, INC.
3525 SYMBEL DRIVE
MADISON, WI 53711
TEL: 608.261.1138
WWW.JDR-ENG.COM

PROJECT INFORMATION

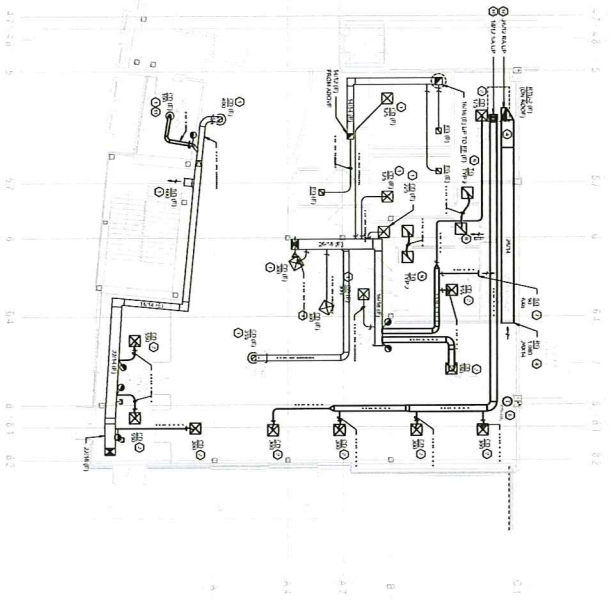
HILDALE SHOPPING
CENTER RENOVATION
PHASE 2

702 N Midvale Blvd
Madison, WI 53705



ISSUANCE AND REVISIONS
CONSTRUCTION DOCUMENTS

DATE	DESCRIPTION



ENLARGED NEW WORK FIRST FLOOR PLAN - SUNDAUCE CINEMAS - HVAC

GENERAL NOTES

1. Read ALL CONTRACT DOCUMENTS, SPECIFICATIONS, AND SCHEDULES CAREFULLY AND COMPLETELY BEFORE BEGINNING WORK.
2. THE CONTRACTOR SHALL BE RESPONSIBLE FOR OBTAINING ALL NECESSARY PERMITS AND APPROVALS FROM THE APPROPRIATE AGENCIES.
3. THE CONTRACTOR SHALL MAINTAIN ACCESS TO ALL ADJACENT PROPERTIES AND UTILITIES AT ALL TIMES.
4. ALL WORK SHALL BE COMPLETED WITHIN THE SPECIFIED TIME FRAME.
5. THE CONTRACTOR SHALL PROTECT ALL EXISTING UTILITIES AND STRUCTURES.
6. ALL MATERIALS AND METHODS SHALL BE APPROVED BY THE ARCHITECT BEFORE INSTALLATION.
7. THE CONTRACTOR SHALL MAINTAIN A NEAT AND SAFE WORKING ENVIRONMENT.
8. ALL WORK SHALL BE SUBJECT TO INSPECTION AND APPROVAL BY THE ARCHITECT.
9. THE CONTRACTOR SHALL BE RESPONSIBLE FOR OBTAINING ALL NECESSARY PERMITS AND APPROVALS FROM THE APPROPRIATE AGENCIES.
10. THE CONTRACTOR SHALL MAINTAIN ACCESS TO ALL ADJACENT PROPERTIES AND UTILITIES AT ALL TIMES.
11. ALL WORK SHALL BE COMPLETED WITHIN THE SPECIFIED TIME FRAME.
12. THE CONTRACTOR SHALL PROTECT ALL EXISTING UTILITIES AND STRUCTURES.
13. ALL MATERIALS AND METHODS SHALL BE APPROVED BY THE ARCHITECT BEFORE INSTALLATION.
14. THE CONTRACTOR SHALL MAINTAIN A NEAT AND SAFE WORKING ENVIRONMENT.
15. ALL WORK SHALL BE SUBJECT TO INSPECTION AND APPROVAL BY THE ARCHITECT.

SHEET INFORMATION

PROJECT NUMBER: CG
PROJECT NUMBER: 710012
DATE: 07/20/18

ENLARGED PLANS -
NEW WORK -SUNDANCE
CINEMAS--HVAC--
M301

A
B
C
D
E

1 2 3 4 5 6 7



opstein Urban : architects

1117 EAST WISCONSIN STREET
MADISON, WI 53703
TEL: 608.261.1111
WWW.OPSTEINURBAN.COM

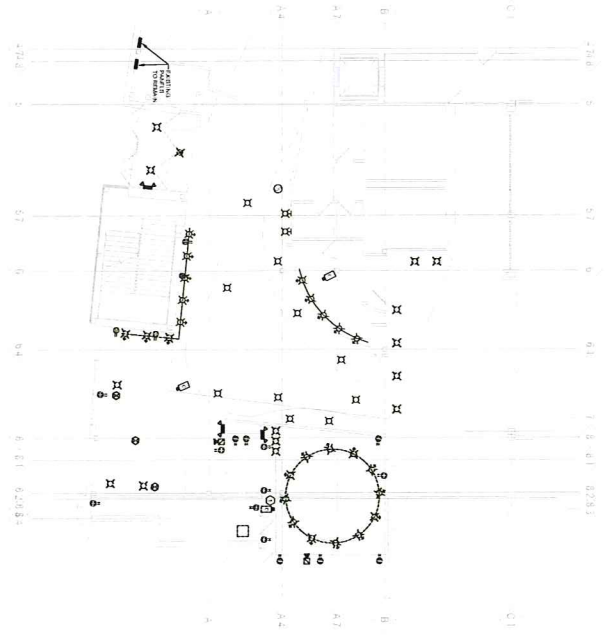
JDR
ENGINEERING, INC.
525 S. WISCONSIN DRIVE
MADISON, WI 53703
PHONE: 608.261.1111
WWW.JDRINC.COM

PROJECT INFORMATION
HILDALE SHOPPING
CENTER RENOVATION
PHASE 2
702 N Midvale Blvd
Madison, WI 53705

WSD DEVELOPMENT
3000 WISCONSIN BLVD
MADISON, WI 53706
PHONE: 608.261.1111
WWW.WSDDEV.COM

ISSUANCE AND REVISIONS
CONSTRUCTION DOCUMENTS

NO.	DATE	DESCRIPTION

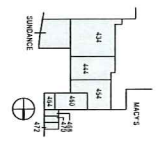


ENLARGED FIRST FLOOR DEMOLITION - SUNDANCE CINEMAS

GENERAL NOTES:

- 1. DEMOLITION CONTRACTOR SHALL VERIFY ALL DEMOLITION AREAS AND REMOVE ALL AS-BUILT STRUCTURES AND MATERIALS TO BE DEMOLISHED TO THE EXISTING GRADE AND TO THE EXISTING FOUNDATION FOOTINGS AND FOUNDATION WALLS.
- 2. DEMOLITION CONTRACTOR SHALL VERIFY ALL DEMOLITION AREAS AND REMOVE ALL AS-BUILT STRUCTURES AND MATERIALS TO BE DEMOLISHED TO THE EXISTING GRADE AND TO THE EXISTING FOUNDATION FOOTINGS AND FOUNDATION WALLS.
- 3. DEMOLITION CONTRACTOR SHALL VERIFY ALL DEMOLITION AREAS AND REMOVE ALL AS-BUILT STRUCTURES AND MATERIALS TO BE DEMOLISHED TO THE EXISTING GRADE AND TO THE EXISTING FOUNDATION FOOTINGS AND FOUNDATION WALLS.
- 4. DEMOLITION CONTRACTOR SHALL VERIFY ALL DEMOLITION AREAS AND REMOVE ALL AS-BUILT STRUCTURES AND MATERIALS TO BE DEMOLISHED TO THE EXISTING GRADE AND TO THE EXISTING FOUNDATION FOOTINGS AND FOUNDATION WALLS.

KEY PLAN:



MEET INFORMATION:

THIS DOCUMENT IS THE PROPERTY OF JDR ENGINEERING, INC. IT IS TO BE USED ONLY FOR THE PROJECT AND SITE SPECIFICALLY IDENTIFIED HEREIN. IT IS NOT TO BE REPRODUCED, COPIED, OR TRANSMITTED IN ANY FORM OR BY ANY MEANS, ELECTRONIC OR MECHANICAL, INCLUDING PHOTOCOPYING, RECORDING, OR BY ANY INFORMATION STORAGE AND RETRIEVAL SYSTEM, WITHOUT THE WRITTEN PERMISSION OF JDR ENGINEERING, INC. ANY UNAUTHORIZED USE OF THIS DOCUMENT IS PROHIBITED AND WILL BE SUBJECT TO LEGAL ACTION.

PROJECT NUMBER: 02
PROJECT NUMBER: 78002
DATE: 09/20/20

ENLARGED PLANS -
DEMOLITION -
ELECTRICAL

E300



opstein uien : architects
 1111 EAST CENTER STREET
 MADISON, WI 53703
 608.261.1111
 608.261.1112
 608.261.1113

QJDR
 ENGINEERING, INC.
 3222 WHEEL DRIVE
 MADISON, WI 53711
 608.261.1111
 608.261.1112

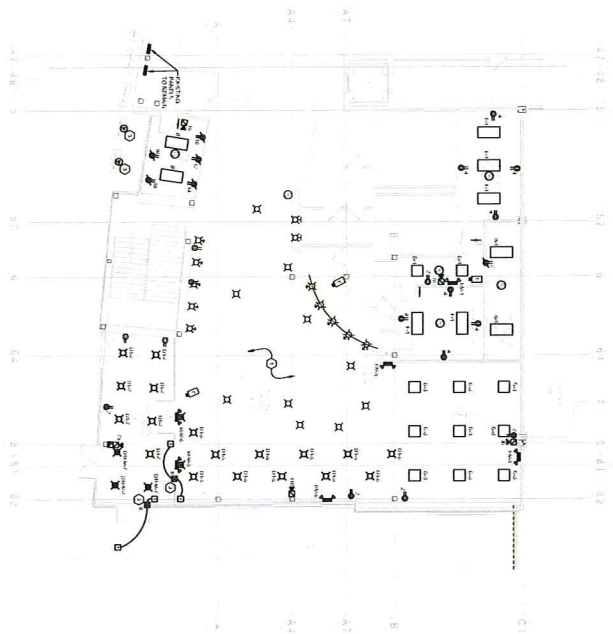
PROJECT INFORMATION
 HILDALE SHOPPING
 CENTER RENOVATION
 PHASE 2
 702 N Midvale Blvd
 Madison, WI 53705



WV DEVELOPMENT
 DEVELOPMENT GROUP
 12222 BROADWAY
 MADISON, WI 53726
 608.261.1111

ISSUANCE AND REVISIONS
 CONSTRUCTION DOCUMENTS

DATE	DESCRIPTION



ENLARGED FIRST FLOOR NEW WORK - SUNDANCE CINEMAS

GENERAL NOTES:

1. ELECTRICAL CONDUIT SHALL BE 1/2" RIGID POLYETHYLENE GLASS REINFORCED (RPG) WITH 1/2" RIGID POLYETHYLENE GLASS REINFORCED (RPG) BUSHINGS TO THE MAIN PANEL TO CONDUIT TO WORK.
2. ALL WIRING SHALL BE IN CONDUIT UNLESS OTHERWISE NOTED.
3. ALL WIRING SHALL BE IN CONDUIT UNLESS OTHERWISE NOTED.

GENERAL NOTES:

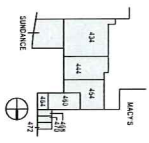
1. ALL WIRING SHALL BE IN CONDUIT UNLESS OTHERWISE NOTED.
2. ALL WIRING SHALL BE IN CONDUIT UNLESS OTHERWISE NOTED.
3. ALL WIRING SHALL BE IN CONDUIT UNLESS OTHERWISE NOTED.

NOTES:

1. ALL WIRING SHALL BE IN CONDUIT UNLESS OTHERWISE NOTED.

2. ALL WIRING SHALL BE IN CONDUIT UNLESS OTHERWISE NOTED.

3. ALL WIRING SHALL BE IN CONDUIT UNLESS OTHERWISE NOTED.



SHEET INFORMATION

PROJECT NUMBER CG
PROJECT NUMBER 71013
DATE 07/20/16

**ENLARGED PLANS -
 NEW WORK -
 ELECTRICAL**
E301