

The Edgewater

666 Wisconsin Avenue
Madison, WI 53703

Owner:
Landmark X, LLC
22 East Mifflin Street, Suite 800
Madison, WI 53703

Developer:
Hammes Company
22 East Mifflin Street, Suite 800
Madison, WI 53703

Civil Engineer:
BT², Inc.
2930 Dairy Drive
Madison, WI 53718

Landscape Architect:
Ken Salki Design, Inc.
303 S. Patterson, Suite One
Madison, WI 53703

PROJECT NUMBER: 08100.00

DATE: March 10, 2010

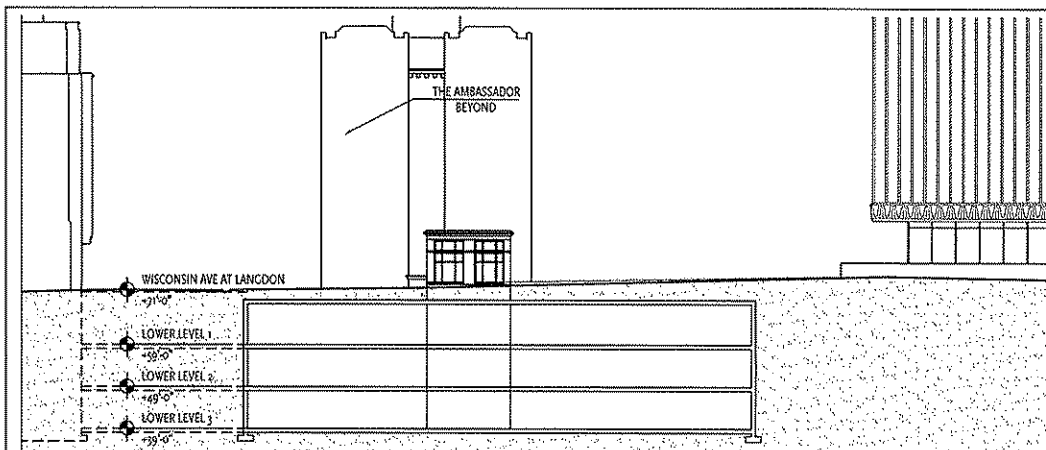
REVISIONS:
A 03/10/10

SCALE: 1" = 20'-0"

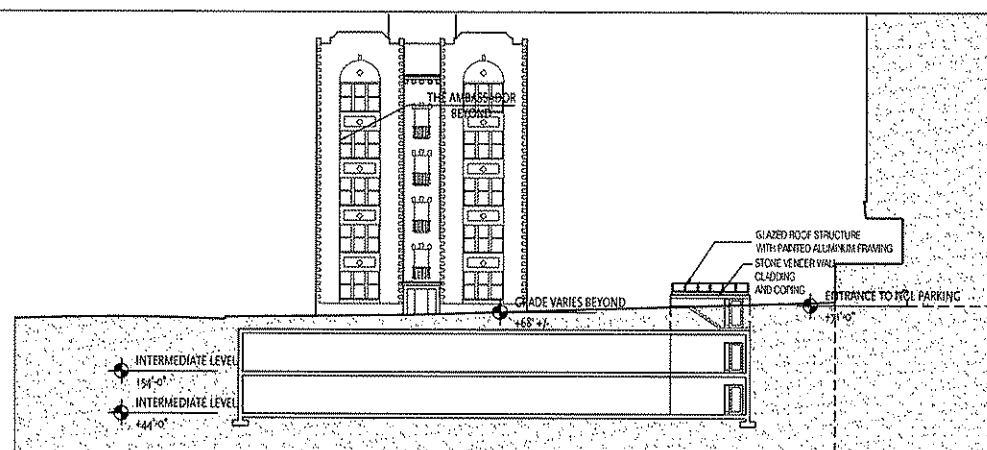
DRAWING NAME:
Parking Plan at Entrance,
Sections, and Partial
Elevations

DRAWING NUMBER:

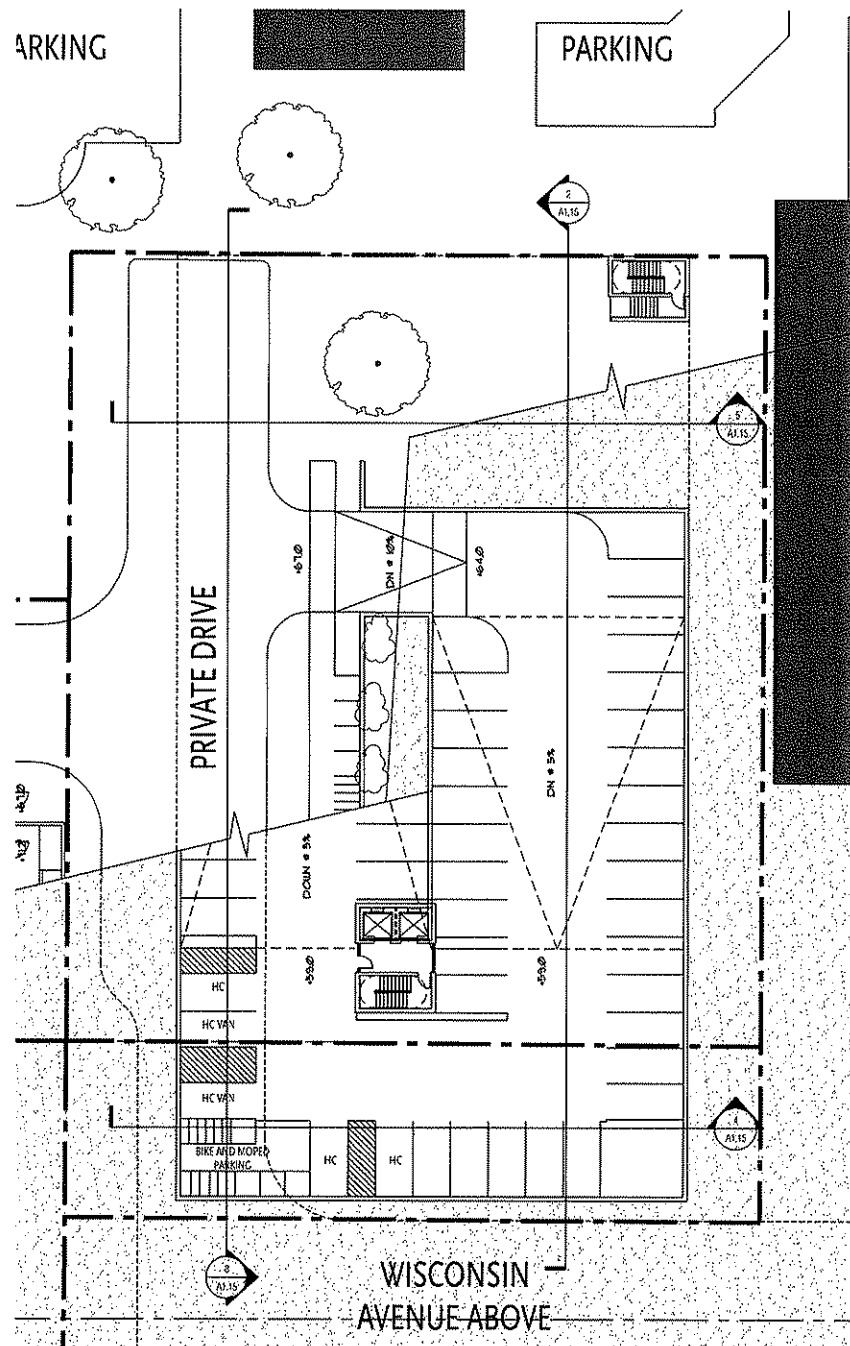
A1.15



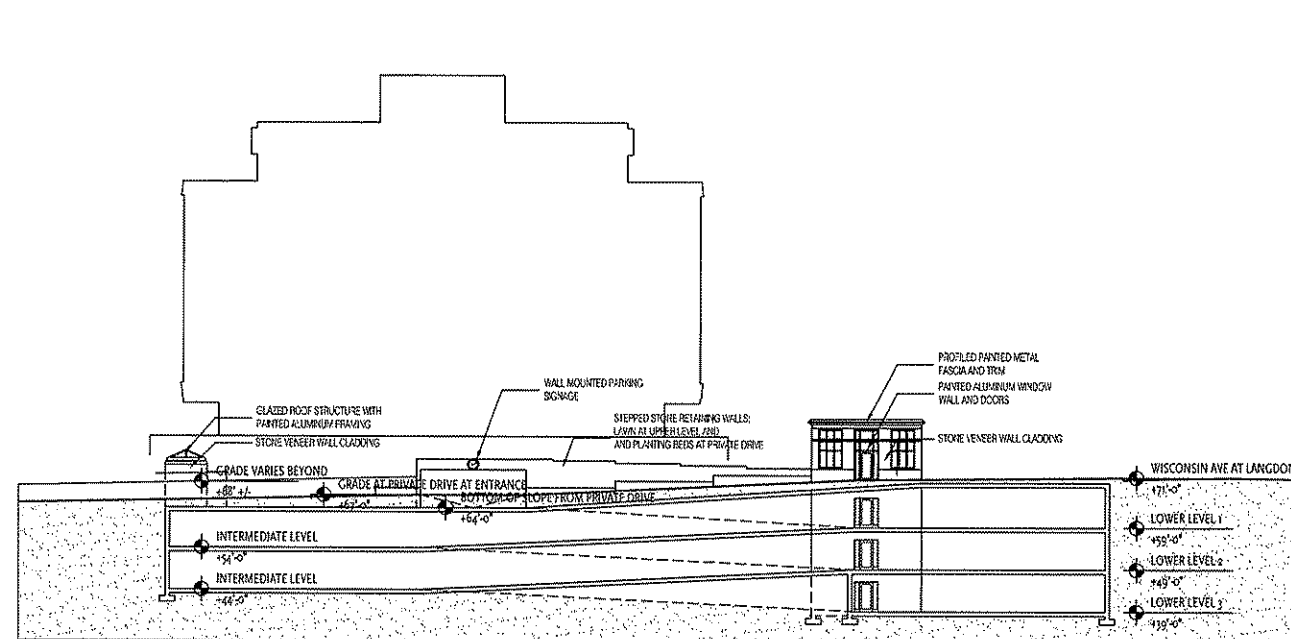
4 Cross Section at Wisconsin Avenue Right of Way
SCALE: 1"=20'-0"



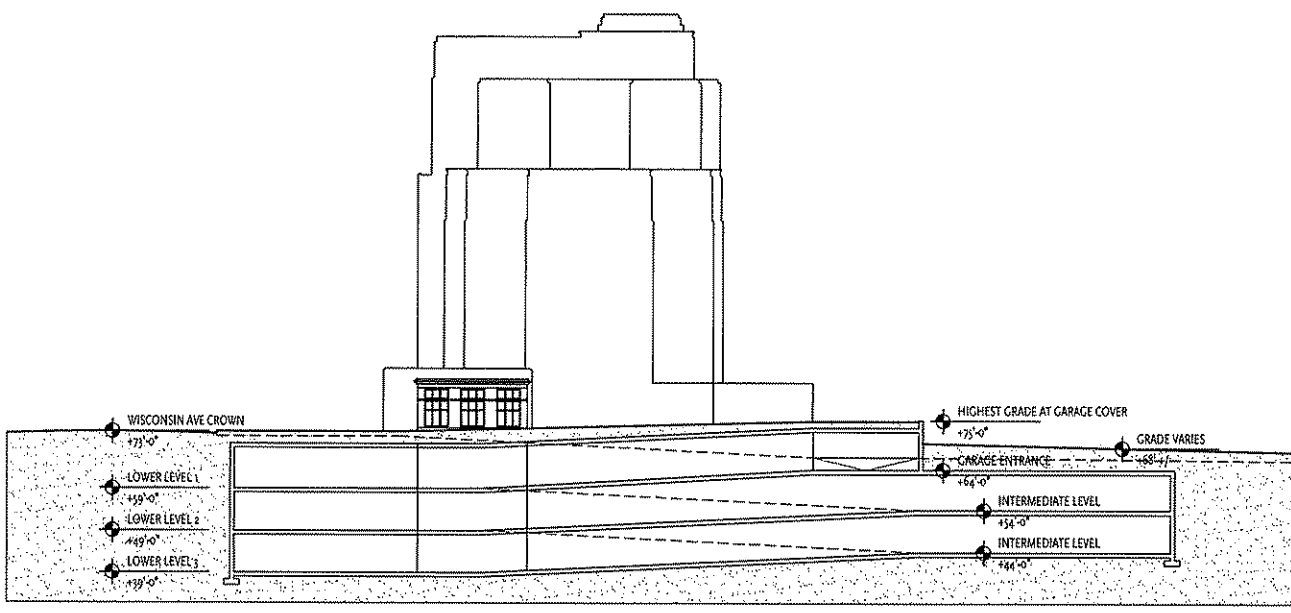
5 Parking Level Plan at Lower Level 3
SCALE: 1"=20'-0"



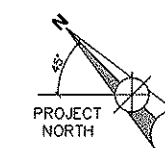
1 Parking Level Plan at Entrance Level
SCALE: 1"=20'-0"



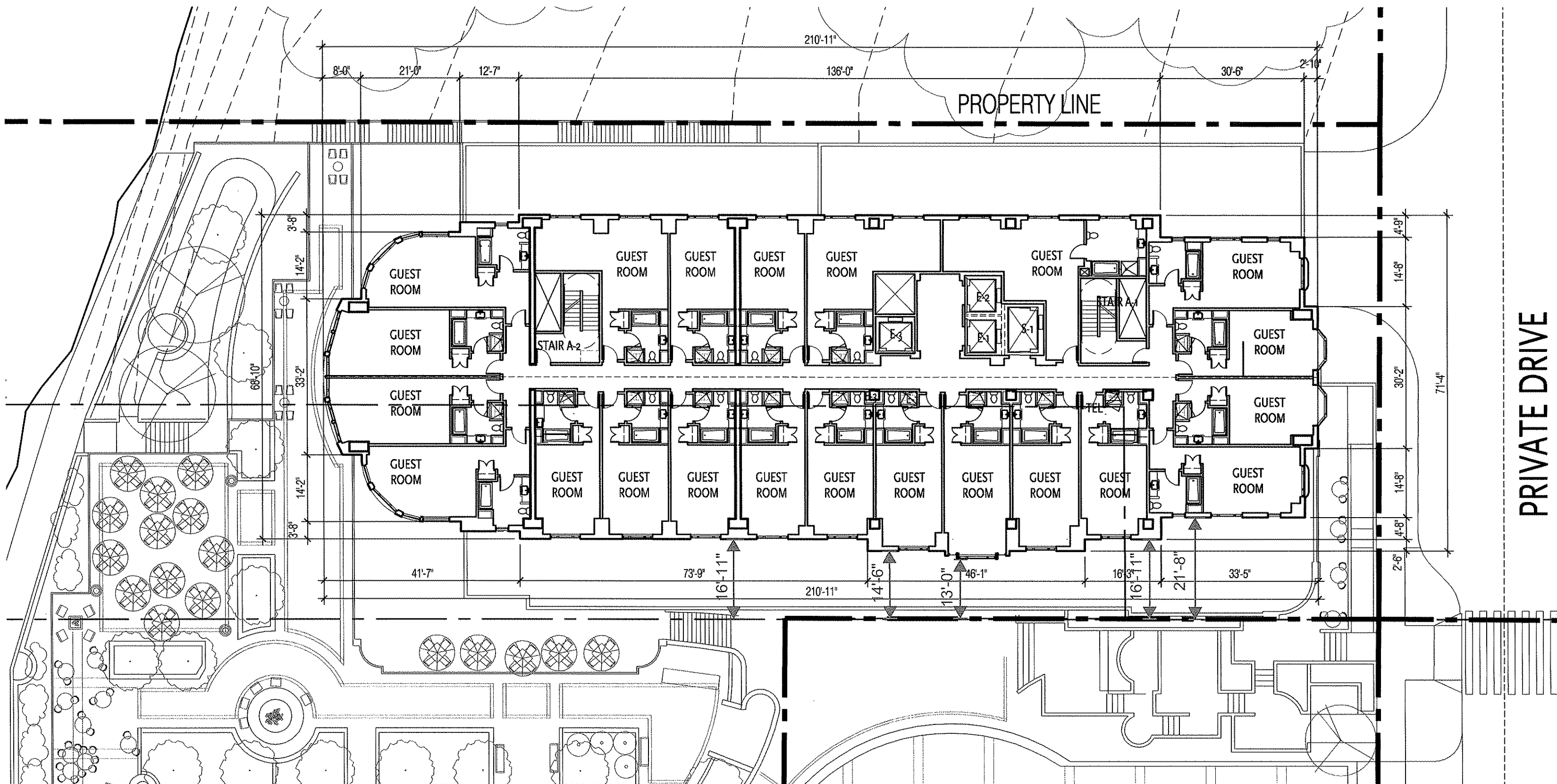
3 Cross Section Facing NGL Building
SCALE: 1"=20'-0"



2 Cross Section facing New Edgewater Hotel
SCALE: 1"=20'-0"



Passout No. 9 3-17-10



Passab No. 9 3-17-10