

**CURRAN**  
ARCHITECTURE

5719 LAWTON LOOP E. DR. #212  
INDIANAPOLIS, IN 46216  
O :: 317.288.0681  
F :: 317.288.0753

THIS DRAWING AND THE IDEAS, DESIGNS AND CONCEPTS CONTAINED HEREIN ARE THE EXCLUSIVE INTELLECTUAL PROPERTY OF CURRAN ARCHITECTURE, AND ARE NOT TO BE USED OR REPRODUCED, WHOLE OR IN PART, WITHOUT THE WRITTEN CONSENT OF CURRAN ARCHITECTURE.  
© COPYRIGHT 2023, CURRAN ARCHITECTURE

ARCHITECT

CONSULTANT

**WYNDHAM ECHO SUITES**  
XXXX EAST PARK BOULEVARD  
MADISON, WI XXXXX

**WYNDHAM**  
HOTELS & RESORTS

PROJECT INFO

CERTIFICATION

ISSUE	DATE

**A2.01**

SHEET INFO  
220286

OVERALL EXTERIOR ELEVATIONS

**GENERAL NOTES**

- RE: SHEET G0.02 FOR ADDITIONAL GENERAL NOTES THAT ARE APPLICABLE. CONTRACTOR TO VERIFY LOCATION OF SIGN WITH OWNER AND PROVIDE BLOCKING AND ELECTRICAL AS REQUIRED.
- DIMENSIONS SHOWN ON THE EXTERIOR ELEVATIONS ARE TO THE FACE OF EXTERIOR WALL, FACE OF MASONRY (FOM), FACE OF CONCRETE WALLS (FC), AND COLUMN GRID LINE, UNLESS OTHERWISE NOTED OR INDICATED. RE: THE WINDOW TYPES SHEET FOR ALL EXTERIOR WINDOW TYPES AND GLASS TYPES.
- EXTERIOR DOORS TO MATCH ADJACENT FINISH COLOR.
- INSTALL EXPANSION JOINTS AT INTERIOR CORNERS AND FLOOR LINES. CONTRACTOR TO PROVIDE SAMPLE OF EXTERIOR WALL FINISH AND COLOR TO ARCHITECT AND WYNDHAM FOR APPROVAL PRIOR TO FINISHING.
- REINFORCE ALL EIFS BELOW 8'-6" AFF WITH DRYVIT PANZER MESH IN ADDITION TO STANDARD PLUS MESH.
- ALL EIFS JOINT LINES ARE AESTHETIC TYPE JOINTS U.N.O.
- ALL CONDENSATE LINES THAT DAYLIGHT TO BE PAINTED TO MATCH ADJACENT BUILDING COLOR.
- EXTERIOR LOUVERS EXCEPT FOR P-TAC LOUVERS ARE TO MATCH ADJACENT FINISH COLOR. BOB: RUSKIN ELF375XELF375XH

**LEGEND**

PATTERN	DESCRIPTION
<b>GLAZING</b>	
	G1 STOREFRONT WINDOW 1" GREY TINTED LOW-E
	G2 1" CLEAR INSULATED LOW-E POST APPLIED VINYL COLOR: WHITE FLAT
<b>PREFINISHED METAL</b>	
	ALUMINUM STOREFRONT DARK BRONZE ANODIZED
	METAL COPING COLOR: TO MATCH DARK BRONZE ANODIZED
	GRILLE COVER FOR PTACS AND LOUVERS DARK BRONZE
<b>EIFS WALL PANEL</b>	
	EF01 COLOR: ECHO 01 1030 ST DRYVIT #103 NATURAL WHITE TEXTURE: SANDBLAST
	EF02 COLOR: ECHO 02 1030 S SW 7674 PEPPERCORN TEXTURE: SANDBLAST
	EF03 COLOR: ECHO 03 1030 S SW 8459 JADITE TEXTURE: SANDBLAST
	EF04 COLOR: ECHO 04 1030 S SW 6240 WINDY BLUE TEXTURE: SANDBLAST
	EF05 COLOR: ECHO 05 1030 ST DRYVIT #16 KING GRAY TEXTURE: SANDBLAST
<b>BRICK</b>	
	BRICK 1 BLACKSON BRICK COLOR: DOVE GREY SIZE: MODULAR TEXTURE: VELOUR

W V U T S R Q P O N M L K J I H.4 H.2 H G F E D C B.9 B A



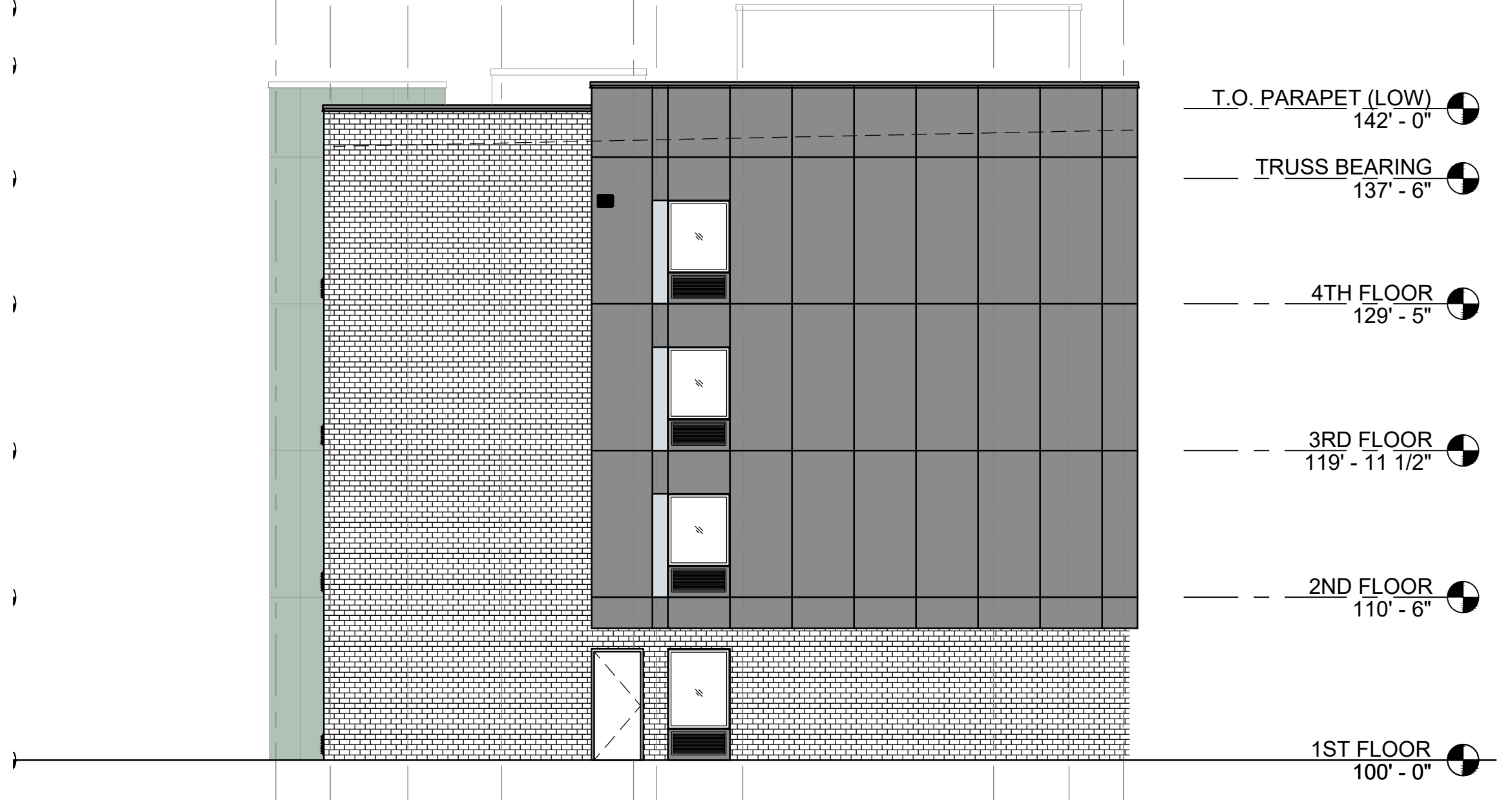
**4 ELEVATION - EXTERIOR SOUTH**  
1/8" = 1'-0"

A B B.9 C D E F G H H.2 H.4 I J K L M N O P Q R S T U V W



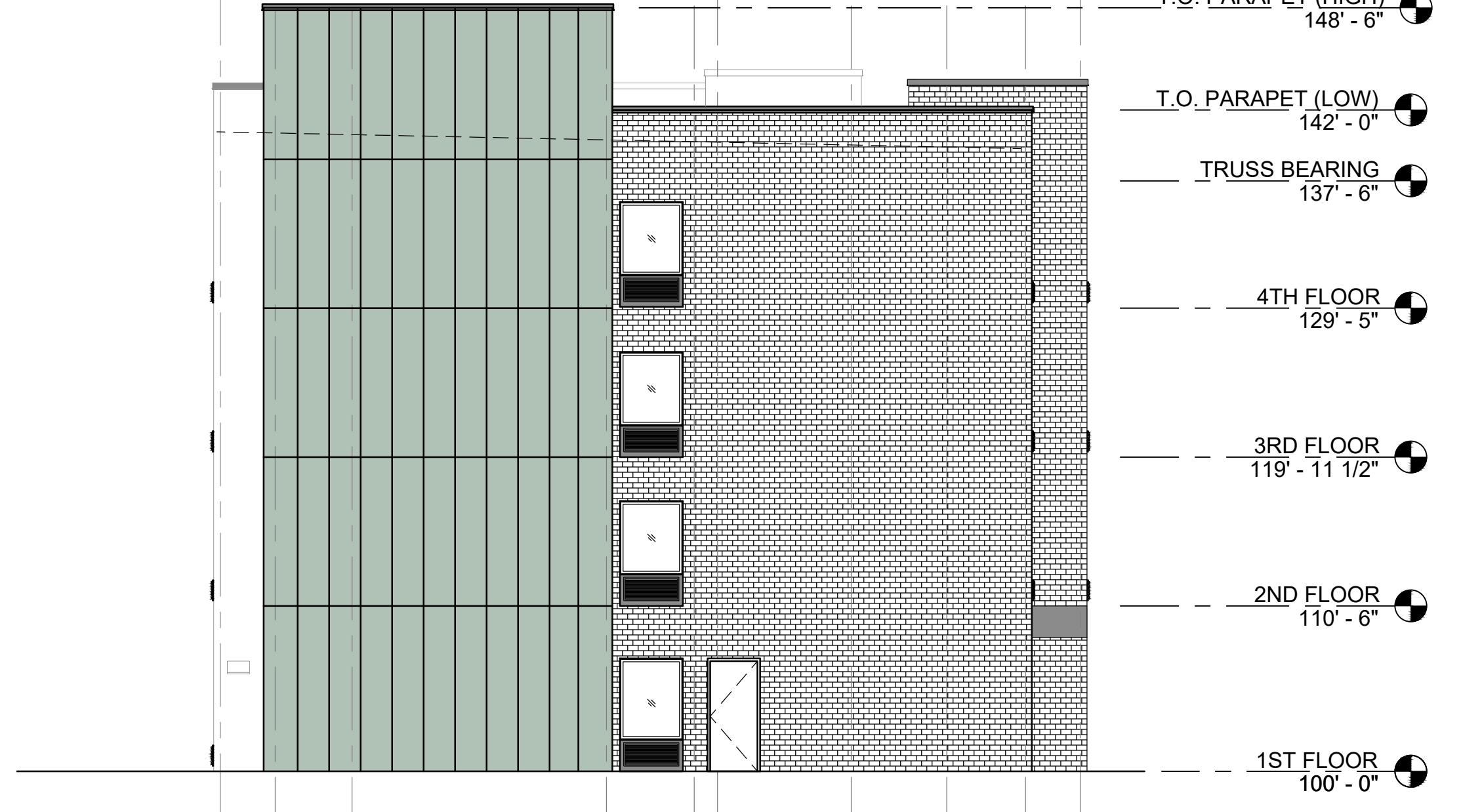
**3 ELEVATION - EXTERIOR NORTH**  
1/8" = 1'-0"

1 2 3 3.5 4 5 6 7 8 9

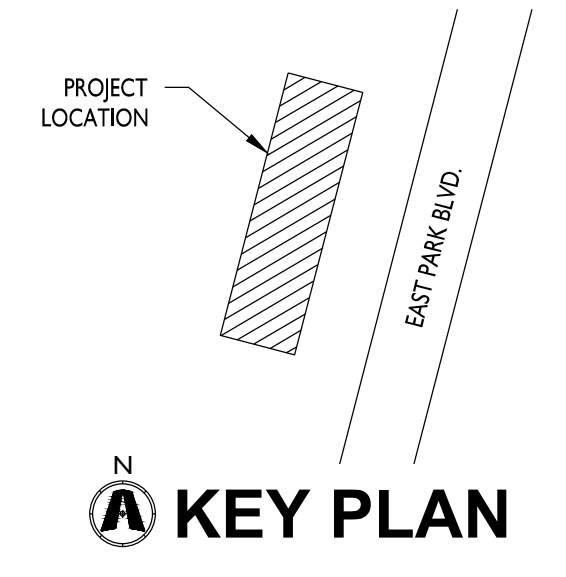


**2 ELEVATION - EXTERIOR EAST**  
1/8" = 1'-0"

9 8 7 6 5 4 3.5 3 2 1



**1 ELEVATION - EXTERIOR WEST**  
1/8" = 1'-0"



4-STORY 124 KEY PROTOTYPE	
LEVEL 01	12,398 SF
LEVEL 02	12,602 SF
LEVEL 03	12,602 SF
LEVEL 04	12,602 SF
TOTAL	50,204 SF

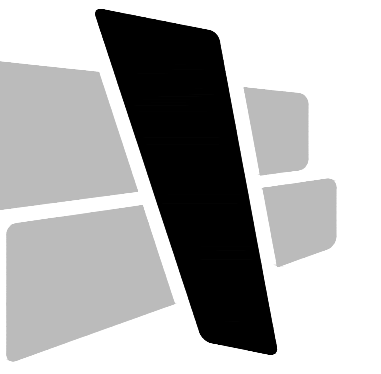
NOTE:  
SEE ENLARGED PLANS FOR WALL TYPES

### GENERAL NOTES - FLOOR PLAN

- RE: SHEET G0.02 FOR ADDITIONAL GENERAL NOTES THAT ARE APPLICABLE.
- ARCHITECTURAL ELEVATION 100'-0" = CIVIL ELEVATION F.F.E. LEVEL HEIGHTS ARE TO T.O. SUBFLOOR.
- EXTERIOR DIMENSIONS SHOWN ON THE FLOOR PLAN ARE TO THE FACE OF FINISH AND COLUMN GRID LINES, UNLESS NOTED OR SHOWN OTHERWISE. INTERIOR DIMENSIONS ARE TO FACE OF FINISH UNLESS NOTED OTHERWISE. WALLS THAT ARE LOCATED ON COLUMN GRID LINES ARE CENTER OF STUD.
- WALL THICKNESS ARE ACTUAL DIMENSIONS. REFERENCE INTERIOR DESIGN DOCUMENTS FOR FINISH INFORMATION.
- DOOR OPENINGS NOT LOCATED BY DIMENSION SHALL BE CENTERED IN WALL SHOWN OR LOCATED 4 INCHES FROM FINISH WALL TO HINGE SIDE OF THE DOOR, ALWAYS ALLOWING A MINIMUM OF 18" FROM THE PULL SIDE (STRIKE SIDE) OF THE DOOR TO THE INTERSECTING WALL OR OTHER PROTRUDING OBJECTS.
- ALL PUBLIC SPACES: THE WALLS WILL BE FINISHED WITH 5/8" CYP. BD. TO A LEVEL 4 FINISH AND PAINTED, UNLESS NOTED OR SPECIFIED OTHERWISE. REFER TO INTERIOR DESIGN DOCUMENTS.
- REFERENCE: INTERIOR DESIGN FINISH LEGEND, FINISH SCHEDULE AND SPECIFICATIONS FOR DOOR AND DOOR FRAME FINISHES.
- FOR GUEST ROOM LAYOUTS AND DIMENSIONS, RE: SHEETS A7.01 - A7.04. PROVIDE 1 1/2" x 1 1/2" FULL HEIGHT MECHANICALLY FASTENED PLASTIC CORNER GUARDS AT ALL EXPOSED CORNERS. REFER TO INTERIOR DESIGN DOCUMENTS.
- THE LOCATION OF WALL MOUNTED ELECTRICAL DEVICES INCLUDING RECEPTACLES, SWITCHES, LIGHT FIXTURES, DATA, CABLE, AND TELEPHONE BOXES SHALL BE COORDINATED TO ACCOMMODATE THE BUILT-IN FURNITURE AND SHALL BE IN COMPLIANCE WITH APPROPRIATE CODES. DEVICES SHALL NOT BE LOCATED BACK TO BACK IN THE SAME STUD CAVITY. REFERENCE INTERIOR DESIGN AND ELECTRICAL DOCUMENTS.
- POLYMER-BASED EXTERIOR INSULATION AND FINISH SYSTEM THICKNESS VARIES PER PROJECT LOCATION. AOR TO VERIFY IECC REQUIREMENTS WITH PROJECT LOCATION.

### KEYNOTES

- 0890.01 PREFINISHED FIXED ALUMINUM LOUVER (RE: MECHANICAL)



**CURRAN**  
ARCHITECTURE

5719 LAWTON LOOP E. DR. #212  
INDIANAPOLIS, IN 46216  
O :: 317.288.0681  
F :: 317.288.0753

THIS DRAWING AND THE IDEAS, DESIGNS AND CONCEPTS CONTAINED HEREIN ARE THE EXCLUSIVE INTELLECTUAL PROPERTY OF CURRAN ARCHITECTURE, AND ARE NOT TO BE USED OR REPRODUCED, WHOLE OR IN PART, WITHOUT THE WRITTEN CONSENT OF CURRAN ARCHITECTURE.  
© COPYRIGHT 2023, CURRAN ARCHITECTURE

ARCHITECT

CONSULTANT

**WYNDHAM ECHO SUITES**  
XXXX EAST PARK BOULEVARD  
MADISON, WI XXXXX

**WYNDHAM**  
HOTELS & RESORTS

PROJECT INFO

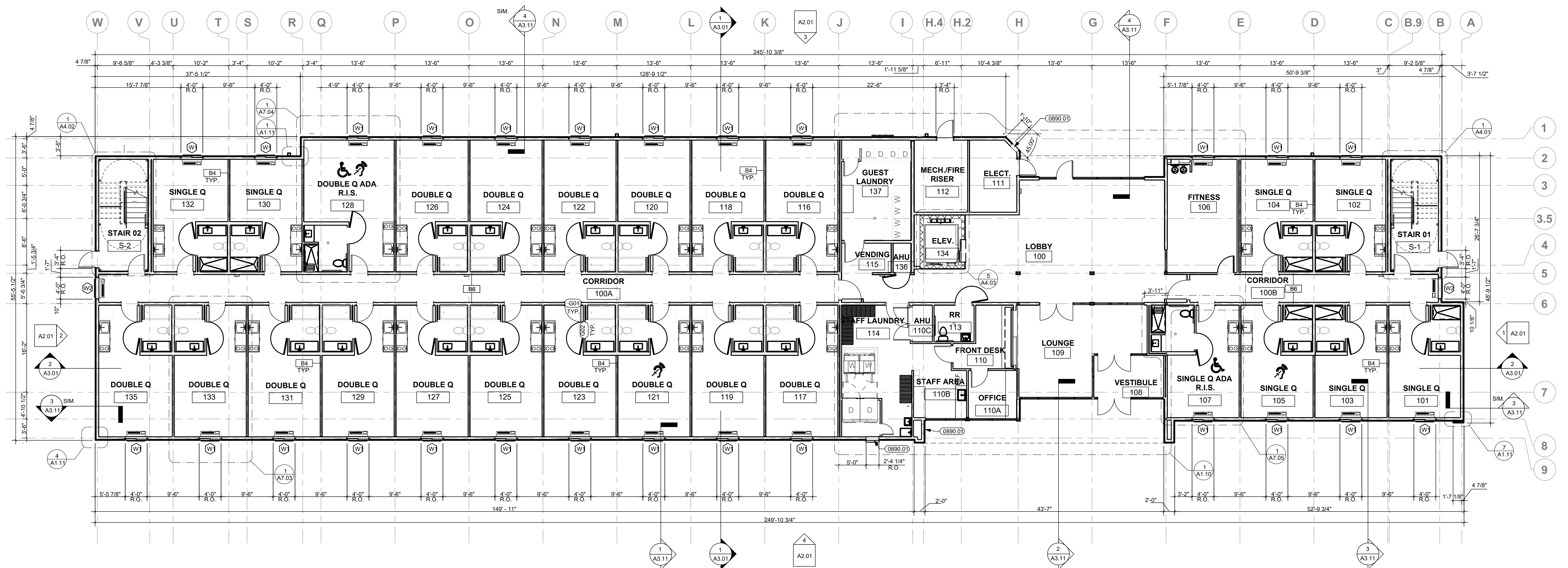
CERTIFICATION

ISSUE	DATE

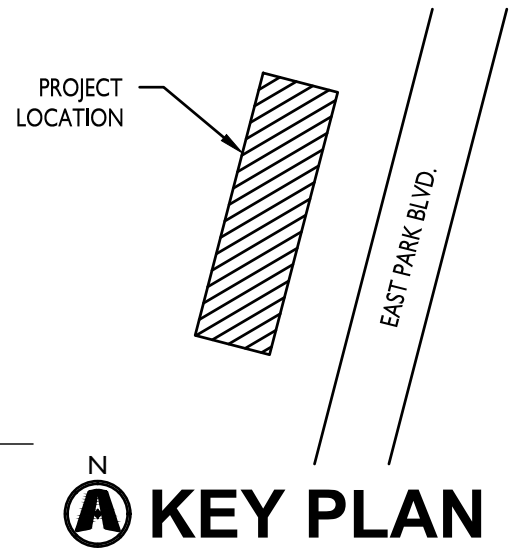
**A1.01**

SHEET INFO  
220286

OVERALL FIRST FLOOR PLAN



**1 ARCHITECTURAL - OVERALL FIRST FLOOR PLAN**  
1/8" = 1'-0"



KEY PLAN



PLAN NORTH

4-STORY 124 KEY PROTOTYPE	
LEVEL 01	12,398 SF
LEVEL 02	12,602 SF
LEVEL 03	12,602 SF
LEVEL 04	12,602 SF
TOTAL	50,204 SF

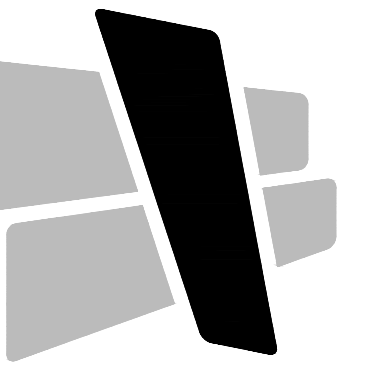
NOTE:  
SEE ENLARGED PLANS FOR WALL TYPES

### GENERAL NOTES - FLOOR PLAN

- RE: SHEET 00.02 FOR ADDITIONAL GENERAL NOTES THAT ARE APPLICABLE.
- ARCHITECTURAL ELEVATION 100'-0" = CIVIL ELEVATION F.F.E.
- LEVEL HEIGHTS ARE TO T.O. SUBFLOOR.
- EXTERIOR DIMENSIONS SHOWN ON THE FLOOR PLAN ARE TO THE FACE OF FINISH AND COLUMN GRID LINES. UNLESS NOTED OR SHOWN OTHERWISE, INTERIOR DIMENSIONS ARE TO FACE OF FINISH UNLESS NOTED OTHERWISE. WALLS THAT ARE LOCATED ON COLUMN GRID LINES ARE CENTER OF STUD.
- WALL THICKNESS ARE ACTUAL DIMENSIONS. REFERENCE INTERIOR DESIGN DOCUMENTS FOR FINISH INFORMATION.
- DOOR OPENINGS NOT LOCATED BY DIMENSION SHALL BE CENTERED IN WALL SHOWN OR LOCATED 4 INCHES FROM FINISH WALL TO HINGE SIDE OF THE DOOR, ALWAYS ALLOWING A MINIMUM OF 18" FROM THE PULL SIDE (STRIKE SIDE) OF THE DOOR TO THE INTERSECTING WALL, OR OTHER PROTRUDING OBJECTS.
- ALL PUBLIC SPACES: THE WALLS WILL BE FINISHED WITH 5/8" GYP. BD. TO A LEVEL 4 FINISH AND PAINTED, UNLESS NOTED OR SPECIFIED OTHERWISE. REFER TO INTERIOR DESIGN DOCUMENTS.
- REFERENCE: INTERIOR DESIGN FINISH LEGEND, FINISH SCHEDULE AND SPECIFICATIONS FOR DOOR AND DOOR FRAME FINISHES.
- FOR GUEST ROOM LAYOUTS AND DIMENSIONS, RE: SHEETS A7.01 - A7.04.
- PROVIDE 1 1/2" x 1 1/2" FULL HEIGHT MECHANICALLY FASTENED PLASTIC CORNER GUARDS AT ALL EXPOSED CORNERS. REFER TO INTERIOR DESIGN DOCUMENTS.
- THE LOCATION OF WALL MOUNTED ELECTRICAL DEVICES INCLUDING RECEPTACLES, SWITCHES, LIGHT FIXTURES, DATA, CABLE, AND TELEPHONE BOXES SHALL BE COORDINATED TO ACCOMMODATE THE BUILT-IN FURNITURE AND SHALL BE IN COMPLIANCE WITH APPROPRIATE CODES. DEVICES SHALL NOT BE LOCATED BACK TO BACK IN THE SAME STUD CAVITY. REFERENCE INTERIOR DESIGN AND ELECTRICAL DOCUMENTS.
- POLYMER-BASED EXTERIOR INSULATION AND FINISH SYSTEM THICKNESS VARIES PER PROJECT LOCATION. AOR TO VERIFY IECC REQUIREMENTS WITH PROJECT LOCATION.

### KEYNOTES

SECOND FLOOR ROOM MATRIX	
ROOM TYPE	KEYS
SINGLE QUEEN	13
DOUBLE QUEEN	18
SINGLE QUEEN ACCESSIBLE	1
DOUBLE QUEEN ACCESSIBLE	1
TOTAL KEYS	33



**CURRAN**  
ARCHITECTURE

5719 LAWTON LOOP E. DR. #212  
INDIANAPOLIS, IN 46216  
O :: 317.288.0681  
F :: 317.288.0753

THIS DRAWING AND THE IDEAS, DESIGNS AND CONCEPTS CONTAINED HEREIN ARE THE EXCLUSIVE INTELLECTUAL PROPERTY OF CURRAN ARCHITECTURE, AND ARE NOT TO BE USED OR REPRODUCED, WHOLE OR IN PART, WITHOUT THE WRITTEN CONSENT OF CURRAN ARCHITECTURE.  
© COPYRIGHT 2023, CURRAN ARCHITECTURE

ARCHITECT

CONSULTANT

**WYNDHAM ECHO SUITES**  
XXXX EAST PARK BOULEVARD  
MADISON, WI XXXXX

**WYNDHAM**  
HOTELS & RESORTS

PROJECT INFO

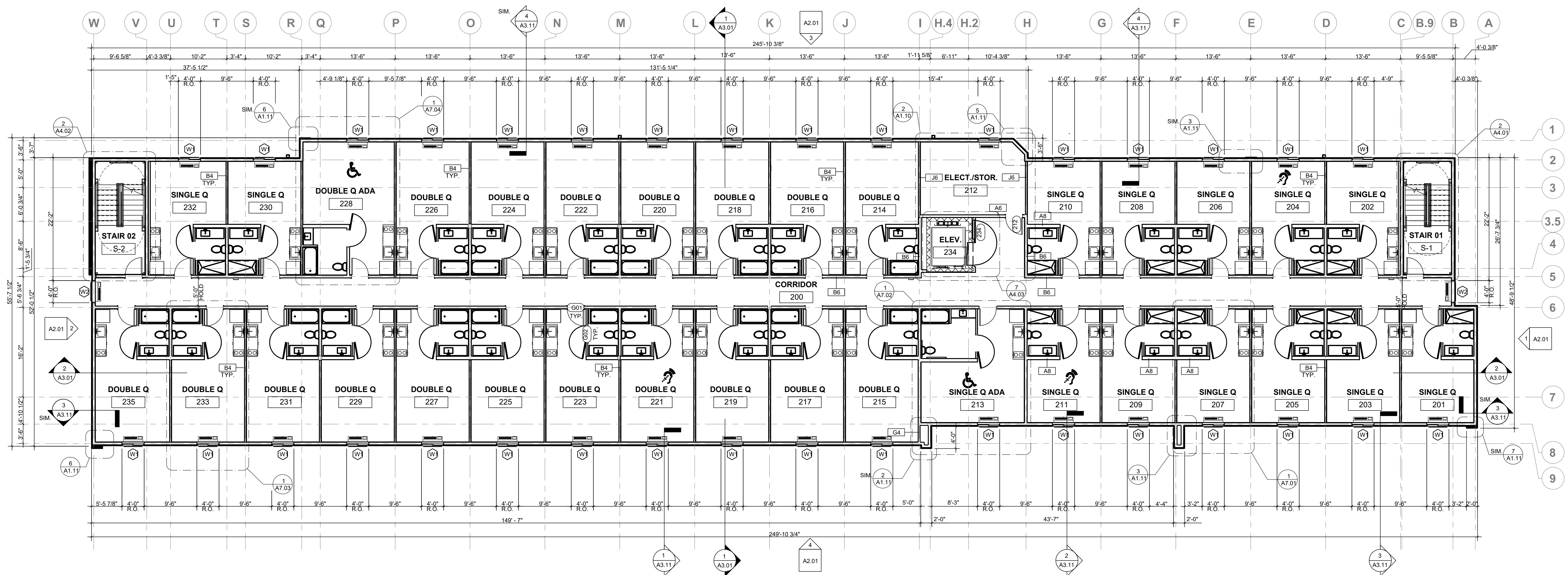
CERTIFICATION

ISSUE	DATE

**A1.02**

SHEET INFO  
220286

OVERALL SECOND FLOOR PLAN



1 ARCHITECTURAL - OVERALL SECOND FLOOR PLAN  
1/8" = 1'-0"

**4-STORY 124 KEY PROTOTYPE**

LEVEL 01	12,398 SF
LEVEL 02	12,602 SF
LEVEL 03	12,602 SF
LEVEL 04	12,602 SF
TOTAL	50,204 SF

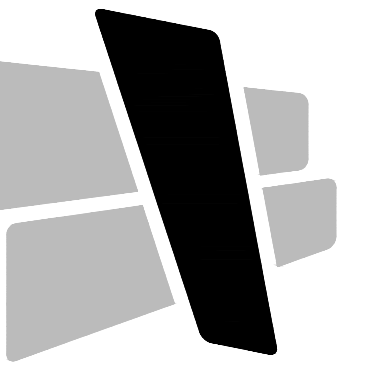
NOTE:  
SEE ENLARGED PLANS FOR WALL TYPES

**GENERAL NOTES - FLOOR PLAN**

- RE: SHEET G0.02 FOR APPLICABLE GENERAL NOTES THAT ARE ARCHITECTURAL ELEVATION 100'-0" = CIVIL ELEVATION F.F.E. LEVEL HEIGHTS ARE TO T.O. SUBFLOOR.
- EXTERIOR DIMENSIONS SHOWN ON THE FLOOR PLAN ARE TO THE FACE OF FINISH AND COLUMN GRID LINES, UNLESS NOTED OR SHOWN OTHERWISE. INTERIOR DIMENSIONS ARE TO FACE OF FINISH UNLESS NOTED OTHERWISE. WALLS THAT ARE LOCATED ON COLUMN GRID LINES ARE CENTER OF STUD.
- WALL THICKNESS ARE ACTUAL DIMENSIONS. REFERENCE INTERIOR DESIGN DOCUMENTS FOR FINISH INFORMATION.
- DOOR OPENINGS NOT LOCATED BY DIMENSION SHALL BE CENTERED IN WALL SHOWN OR LOCATED 4 INCHES FROM FINISH WALL TO HINGE SIDE OF THE DOOR, ALWAYS ALLOWING A MINIMUM OF 18" FROM THE PULL SIDE (STRIKE SIDE) OF THE DOOR TO THE INTERSECTING WALL OR OTHER PROTRUDING OBJECTS.
- ALL PUBLIC SPACES: THE WALLS WILL BE FINISHED WITH 5/8" GYP. BD. TO A LEVEL 4 FINISH AND PAINTED, UNLESS NOTED OR SPECIFIED OTHERWISE. REFER TO INTERIOR DESIGN DOCUMENTS.
- REFERENCE: INTERIOR DESIGN FINISH LEGEND, FINISH SCHEDULE AND SPECIFICATIONS FOR DOOR AND DOOR FRAME FINISHES.
- FOR GUEST ROOM LAYOUTS AND DIMENSIONS, RE: SHEETS A7.01 - A7.04.
- PROVIDE 1 1/2" x 1 1/2" FULL HEIGHT MECHANICALLY FASTENED PLASTIC CORNER GUARDS AT ALL EXPOSED CORNERS. REFER TO INTERIOR DESIGN DOCUMENTS.
- THE LOCATION OF WALL MOUNTED ELECTRICAL DEVICES INCLUDING RECEPTACLES, SWITCHES, LIGHT FIXTURES, DATA, CABLE, AND TELEPHONE BOXES SHALL BE COORDINATED TO ACCOMMODATE THE BUILT-IN FURNITURE AND SHALL BE IN COMPLIANCE WITH APPROPRIATE CODES. DEVICES SHALL NOT BE LOCATED BACK TO BACK IN THE SAME STUD CAVITY. REFERENCE INTERIOR DESIGN AND ELECTRICAL DOCUMENTS.
- POLYMER-BASED EXTERIOR INSULATION AND FINISH SYSTEM THICKNESS VARIES PER PROJECT LOCATION. AOR TO VERIFY IECC REQUIREMENTS WITH PROJECT LOCATION.

**KEYNOTES**

ROOM TYPE	KEYS
SINGLE QUEEN	13
DOUBLE QUEEN	18
SINGLE QUEEN ACCESSIBLE	1
DOUBLE QUEEN ACCESSIBLE	1
TOTAL KEYS	33



**CURRAN**  
ARCHITECTURE

5719 LAWTON LOOP E. DR. #212  
INDIANAPOLIS, IN 46216  
O :: 317.288.0681  
F :: 317.288.0753

THIS DRAWING AND THE IDEAS, DESIGNS AND CONCEPTS CONTAINED HEREIN ARE THE EXCLUSIVE INTELLECTUAL PROPERTY OF CURRAN ARCHITECTURE, AND ARE NOT TO BE USED OR REPRODUCED, WHOLE OR IN PART, WITHOUT THE WRITTEN CONSENT OF CURRAN ARCHITECTURE.  
© COPYRIGHT 2023, CURRAN ARCHITECTURE

ARCHITECT

CONSULTANT

**WYNDHAM ECHO SUITES**  
XXXX EAST PARK BOULEVARD  
MADISON, WI XXXXX

**WYNDHAM**  
HOTELS & RESORTS

PROJECT INFO

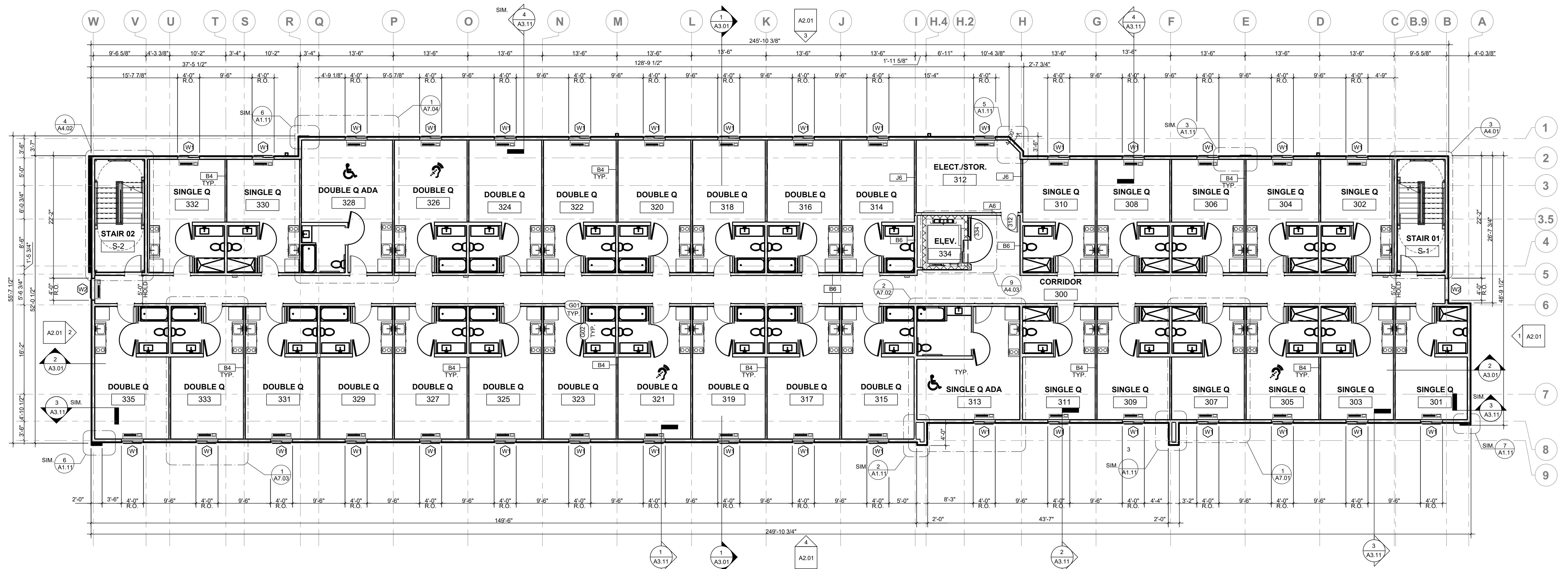
CERTIFICATION

ISSUE	DATE

**A1.03**

SHEET INFO  
220286

OVERALL THIRD FLOOR PLAN



**1 ARCHITECTURAL - OVERALL THIRD FLOOR PLAN**  
1/8" = 1'-0"

**4-STORY 124 KEY PROTOTYPE**

LEVEL 01	12,398 SF
LEVEL 02	12,602 SF
LEVEL 03	12,602 SF
LEVEL 04	12,602 SF
TOTAL	50,204 SF

NOTE:  
SEE ENLARGED PLANS FOR WALL TYPES

**GENERAL NOTES - FLOOR PLAN**

- RE: SHEET G0.02 FOR ADDITIONAL GENERAL NOTES THAT ARE APPLICABLE.
- ARCHITECTURAL ELEVATION 100'-0" = CIVIL ELEVATION F.F.E.
- LEVEL HEIGHTS ARE TO T.O. SUBFLOOR.
- EXTERIOR DIMENSIONS SHOWN ON THE FLOOR PLAN ARE TO THE FACE OF FINISH AND COLUMN GRID LINES, UNLESS NOTED OR SHOWN OTHERWISE. INTERIOR DIMENSIONS ARE TO FACE OF FINISH UNLESS NOTED OTHERWISE. WALLS THAT ARE LOCATED ON COLUMN GRID LINES ARE CENTER OF STUD.
- WALL THICKNESS ARE ACTUAL DIMENSIONS. REFERENCE INTERIOR DESIGN DOCUMENTS FOR FINISH INFORMATION.
- DOOR OPENINGS NOT LOCATED BY DIMENSION SHALL BE CENTERED IN WALL SHOWN OR LOCATED 4 INCHES FROM FINISH WALL TO HINGE SIDE OF THE DOOR, ALWAYS ALLOWING A MINIMUM OF 18" FROM THE PULL SIDE (STRIKE SIDE) OF THE DOOR TO THE INTERSECTING WALL OR OTHER PROTRUDING OBJECTS.
- ALL PUBLIC SPACES: THE WALLS WILL BE FINISHED WITH 5/8" CYP. BD. TO A LEVEL 4 FINISH AND PAINTED, UNLESS NOTED OR SPECIFIED OTHERWISE. REFER TO INTERIOR DESIGN DOCUMENTS.
- REFERENCE: INTERIOR DESIGN FINISH LEGEND, FINISH SCHEDULE AND SPECIFICATIONS FOR DOOR AND DOOR FRAME FINISHES.
- FOR GUEST ROOM LAYOUTS AND DIMENSIONS, RE: SHEETS A7.01 - A7.04.
- PROVIDE 1 1/2" x 1 1/2" FULL HEIGHT MECHANICALLY FASTENED PLASTIC CORNER GUARDS AT ALL EXPOSED CORNERS. REFER TO INTERIOR DESIGN DOCUMENTS.
- THE LOCATION OF WALL MOUNTED ELECTRICAL DEVICES INCLUDING RECEPTACLES, SWITCHES, LIGHT FIXTURES, DATA, CABLE, AND TELEPHONE BOXES SHALL BE COORDINATED TO ACCOMMODATE THE BUILT-IN FURNITURE AND SHALL BE IN COMPLIANCE WITH APPROPRIATE CODES. DEVICES SHALL NOT BE LOCATED BACK TO BACK IN THE SAME STUD CAVITY. REFERENCE INTERIOR DESIGN AND ELECTRICAL DOCUMENTS.
- POLYMER-BASED EXTERIOR INSULATION AND FINISH SYSTEM THICKNESS VARIES PER PROJECT LOCATION. AOR TO VERIFY IECC REQUIREMENTS WITH PROJECT LOCATION.

**KEYNOTES**

0550.33 ROOF ACCESS METAL LADDER



**CURRAN**  
ARCHITECTURE

5719 LAWTON LOOP E. DR. #212  
INDIANAPOLIS, IN 46216  
O :: 317.288.0681  
F :: 317.288.0753

THIS DRAWING AND THE IDEAS, DESIGNS AND CONCEPTS CONTAINED HEREIN ARE THE EXCLUSIVE INTELLECTUAL PROPERTY OF CURRAN ARCHITECTURE, AND ARE NOT TO BE USED OR REPRODUCED, WHOLE OR IN PART, WITHOUT THE WRITTEN CONSENT OF CURRAN ARCHITECTURE.  
© COPYRIGHT 2023, CURRAN ARCHITECTURE

ARCHITECT

CONSULTANT

**WYNDHAM ECHO SUITES**  
XXXX EAST PARK BOULEVARD  
MADISON, WI XXXXX



PROJECT INFO

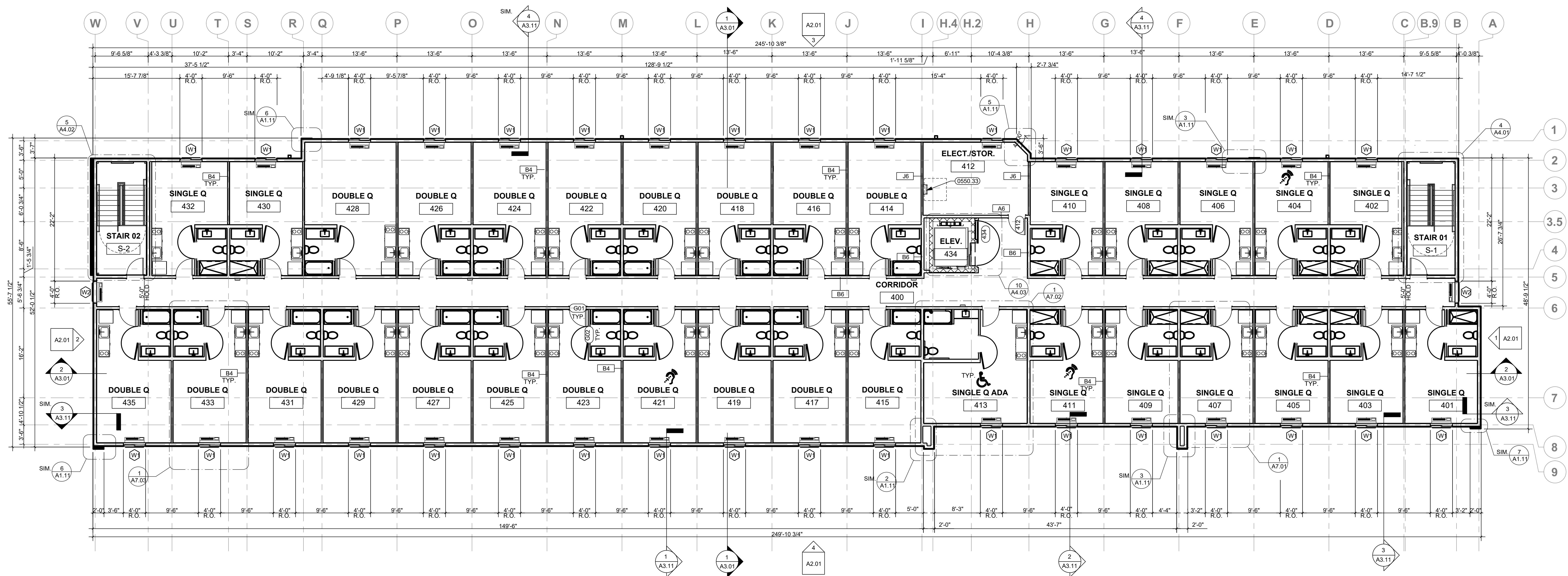
CERTIFICATION

ISSUE	DATE

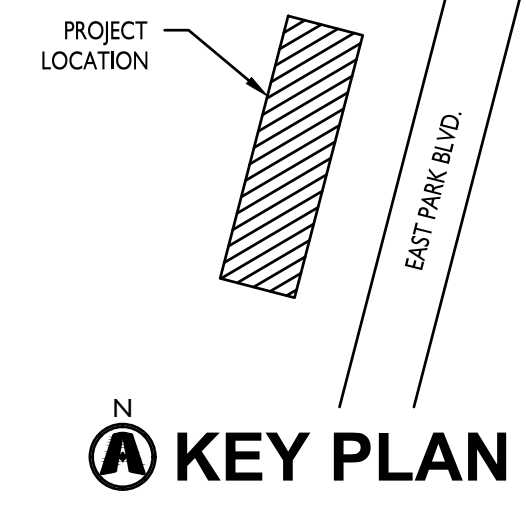
**A1.04**

SHEET INFO  
220286

OVERALL FOURTH FLOOR PLAN

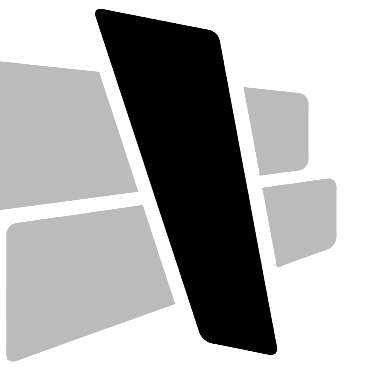


**1 ARCHITECTURAL - OVERALL FOURTH FLOOR PLAN**  
1/8" = 1'-0"



KEY PLAN

NEED TO CONFIRM TJI AND BEARING W/ STRUCTURAL.



**CURRAN**  
ARCHITECTURE

5719 LAWTON LOOP E. DR. #212  
INDIANAPOLIS, IN 46216  
O :: 317.288.0681  
F :: 317.288.0753

THIS DRAWING AND THE IDEAS, DESIGNS AND CONCEPTS CONTAINED HEREIN ARE THE EXCLUSIVE INTELLECTUAL PROPERTY OF CURRAN ARCHITECTURE, AND ARE NOT TO BE USED OR REPRODUCED, WHOLE OR IN PART, WITHOUT THE WRITTEN CONSENT OF CURRAN ARCHITECTURE.  
© COPYRIGHT 2023, CURRAN ARCHITECTURE

ARCHITECT

CONSULTANT

**WYNDHAM ECHO SUITES**  
XXXX EAST PARK BOULEVARD  
MADISON, WI XXXXX

**WYNDHAM**  
HOTELS & RESORTS

PROJECT INFO

CERTIFICATION

ISSUE	DATE

**A3.11**

SHEET INFO  
220286

WALL SECTIONS

