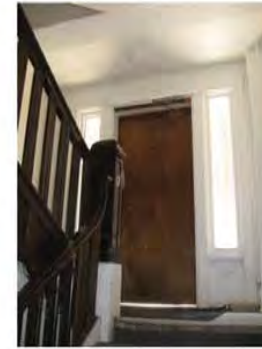






145 IOTA COURT

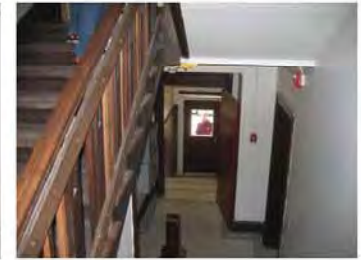




619 N HENRY



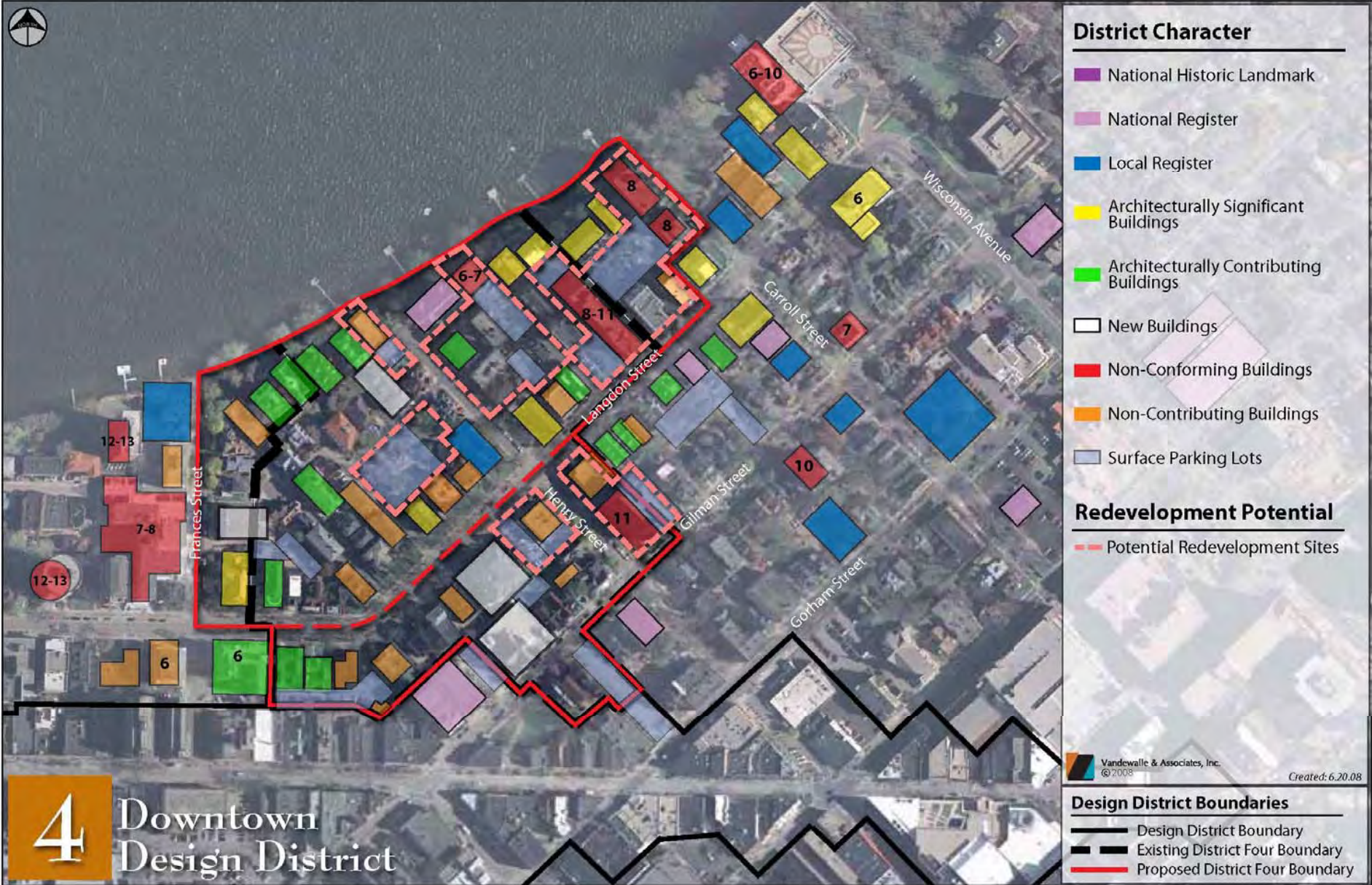
IOTA COURT PROJECT
EXISTING CONDITIONS
MADISON, WISCONSIN





IOTA COURT PROJECT
EXISTING CONDITIONS
 MADISON, WISCONSIN







- New Combining Units
- Existing Building
- Project Site Boundary
- Bound Height Area

WATERFRONT
 Waterfront Apartments
 Figure Ground Site Plan

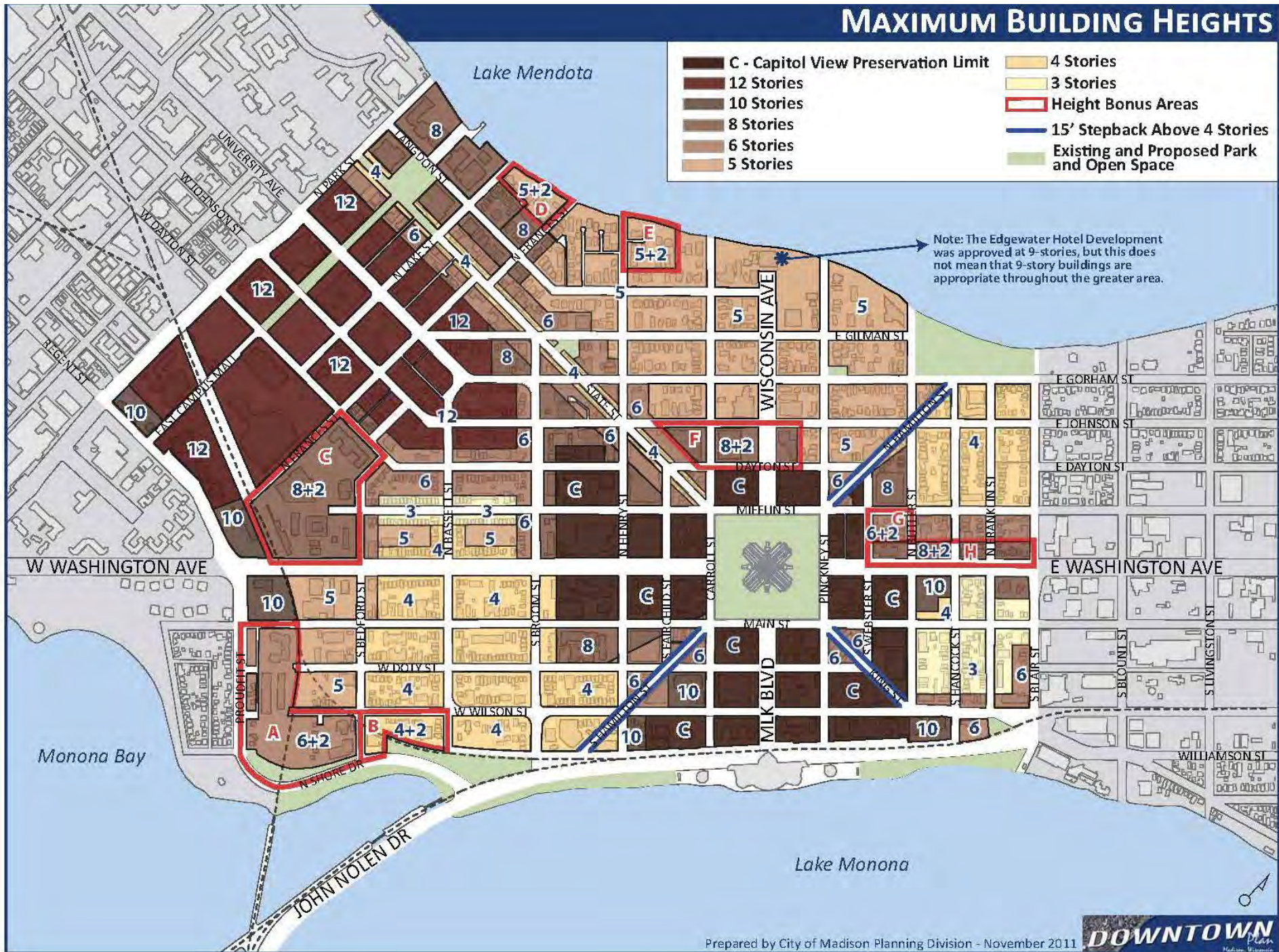
January 14, 2015
 2001



IOTA COURT PROJECT
CONCEPT SKETCH
MADISON, WISCONSIN



MAXIMUM BUILDING HEIGHTS



- C - Capitol View Preservation Limit
- 12 Stories
- 10 Stories
- 8 Stories
- 6 Stories
- 5 Stories

- 4 Stories
- 3 Stories
- Height Bonus Areas
- 15' Stepback Above 4 Stories
- Existing and Proposed Park and Open Space

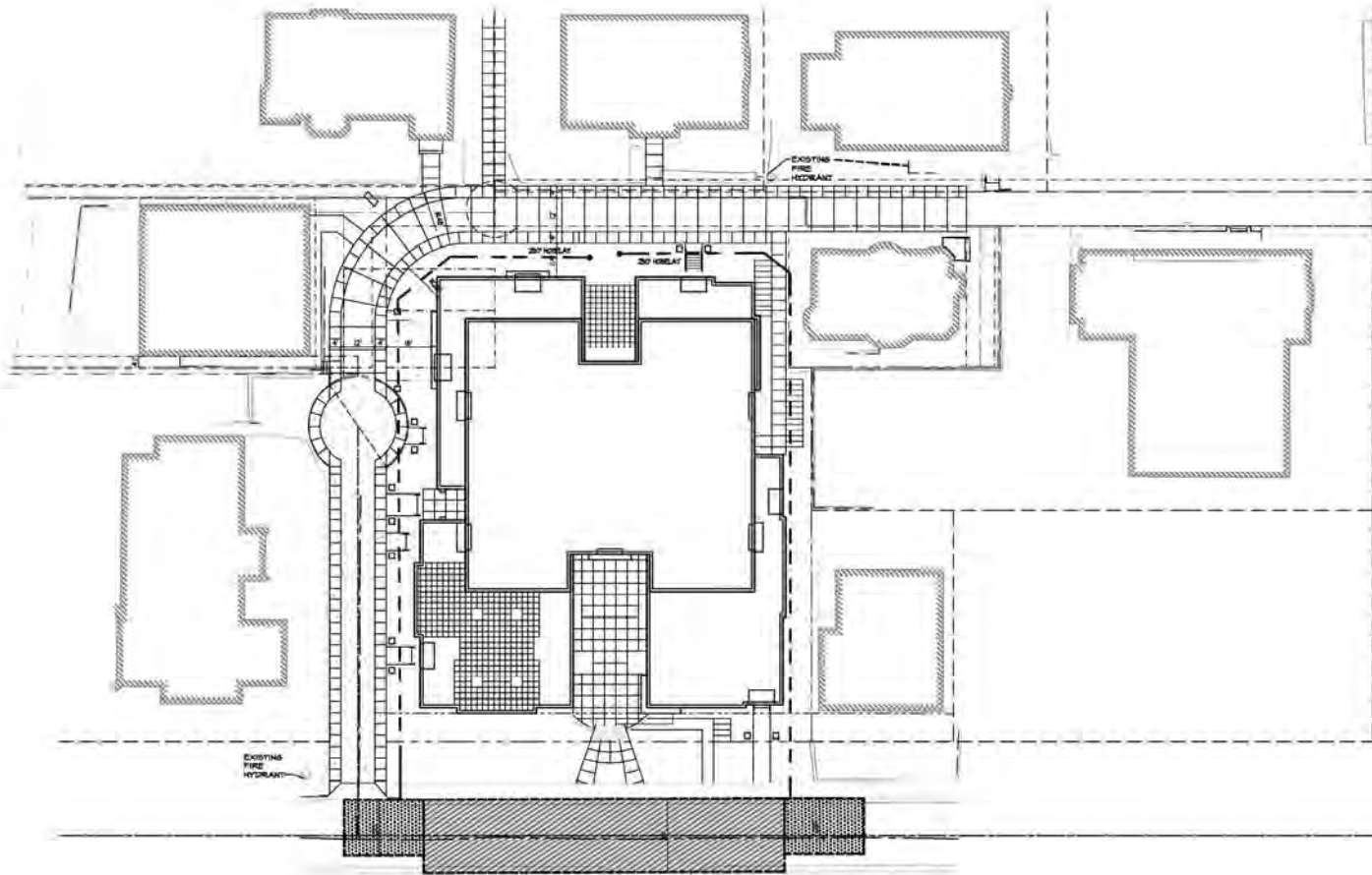
Note: The Edgewater Hotel Development was approved at 9-stories, but this does not mean that 9-story buildings are appropriate throughout the greater area.



Why 5 +2

- 1.) Maintain the character on the Lake and Langdon
- 2.) Avoid blocking key views
- 3.) Place mass centralized in the larger deep blocks
- 4.) Utilize grade transitions to incorporate density





KNOTHE & BRUCE ARCHITECTS

7601 University Avenue Suite 201
 Middleton, Wisconsin 53562
 608-836-3490 Fax 836-4934

Consult:

- Notes
- 1. 2 1/2" HDG AERIAL APPLICABLE FIRE LANE PARALLEL TO ONE EXTREME SIDE OF A BUILDING.
 - 2. 3" TO 3 1/2" HDG FIRE LANE. (SEE PLAN FOR ACTUAL WIDTH)
 - 3. VARIOUS LINE TYPES REPRESENT 2 1/2" HOSE LAYS.

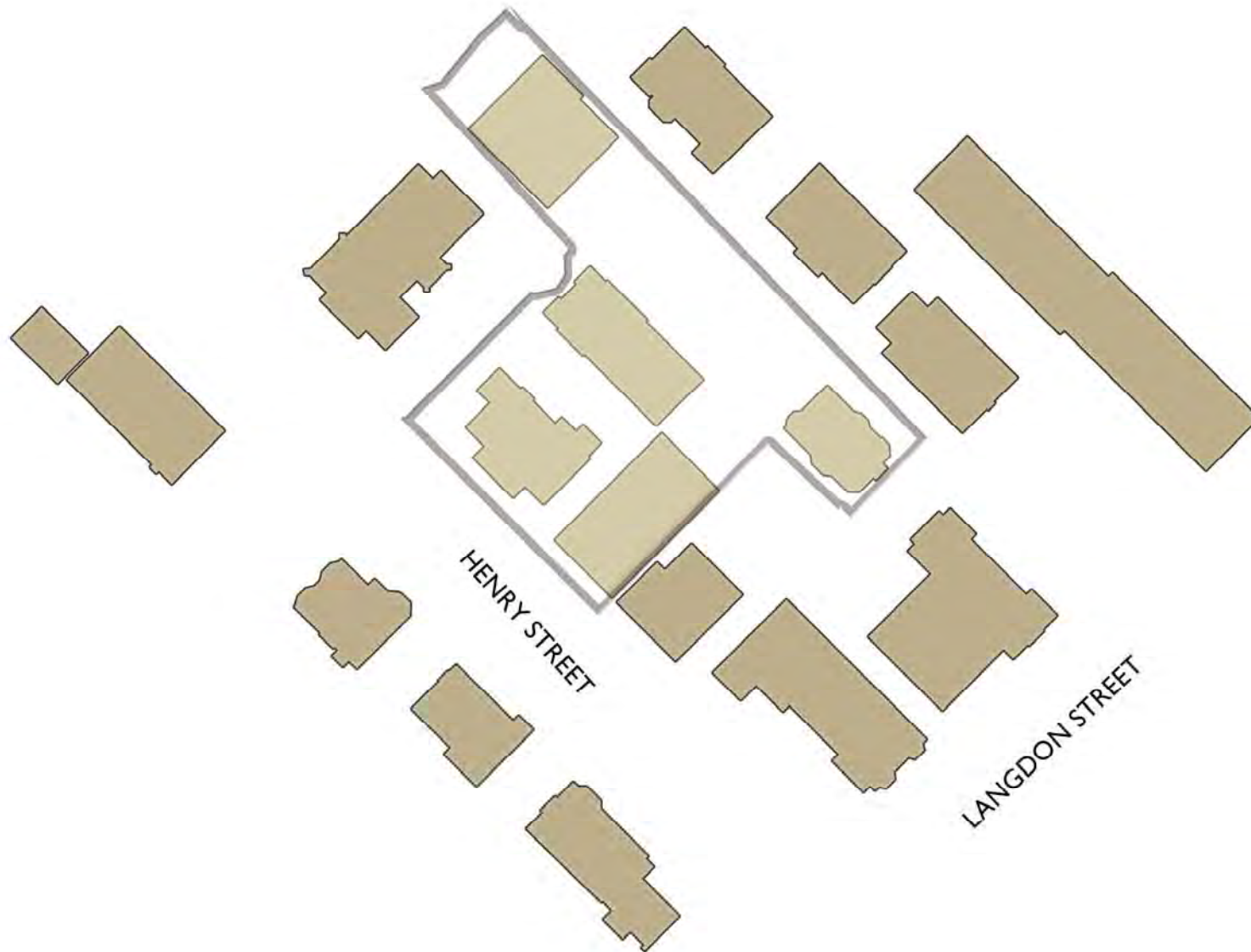
Revisions
 Last Use Approval - October 17, 2002
 Revised Last Use Drawing - January 24, 2003

FIRE ACCESS PLAN



Project Title
Houden - Iota Court

625 N. Henry St.
 Drawing Title
Fire Access Plan

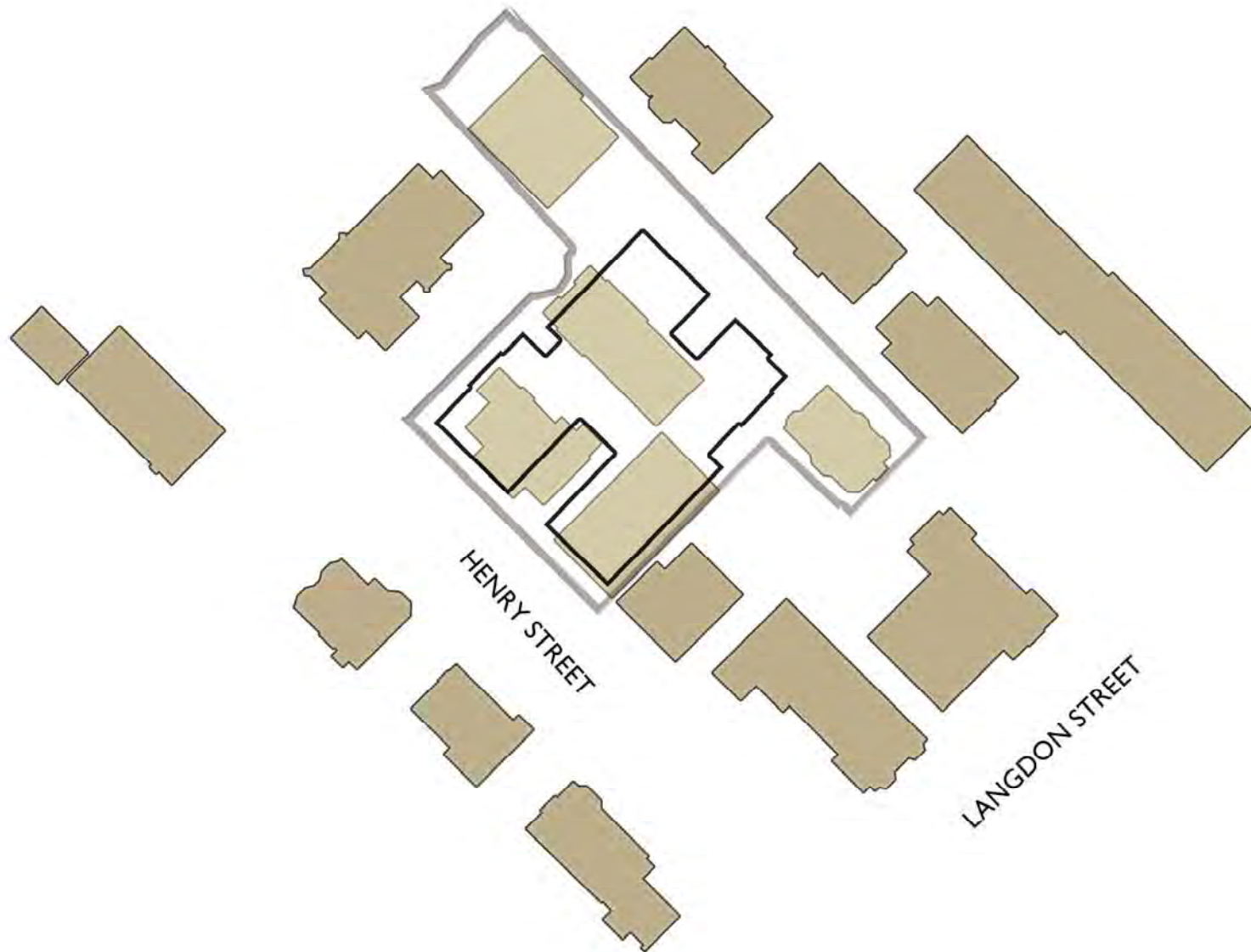


WATERFRONT

Site Plan

February 4, 2013
#0804

KNOTHE
BRUCE
& architects



WATERFRONT

Site Plan

February 4, 2013
#0804

KNOTHE
BRUCE
& architects

