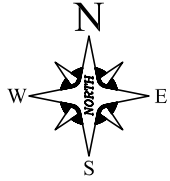


MADISON, WI.  
 MDONALD'S REBUILD CONCEPT 2  
 EAST WASHINGTON AVENUE  
 39 STALLS  
 4-26-07  
 REVISED 4-30-07  
 REVISED 5-13-07



DARBO DRIVE

ASPHALT PAVEMENT WIDTH 33 FT.

SANITARY MANHOLE RM 850.47  
 N.W. 12" CLAY INV. 844.43  
 N.E. 12" CLAY INV. 844.27

STORM SQUARE INLET RM 848.85  
 N.E. 15" R.C.P. INV. 845.80  
 S.W. 27" R.C.P. INV. 845.80

COMPLETELY DRY (ABANDONED?)  
 SANITARY MANHOLE RM 853.28  
 N.E. 8" CONCRETE INV. 845.57  
 S.W. 8" CONCRETE INV. 847.00  
 W. 8" CONCRETE INV. 847.00

BENCHMARK  
 SET CHEELED SQUARE  
 ON TOP OF WEST SIDE OF  
 CONCRETE LIGHT POLE  
 BASE. ELEVATION=854.14

METAL AND PLASTIC  
 OVERHEAD McDONALD'S SIGN  
 ON 4"X4" STEEL COLUMN

1-STORY MASONRY  
 BUILDING

ELECTRIC TRANSFORMER

4587 Bldg

BIKE RACK

ACCESS ROUTE  
 TO McDONALD'S  
 FROM PEDESTRAIN  
 BRIDGE AND WALK

PROPOSED  
 CONNECTION TO  
 PEDESTRAIN  
 BRIDGE AND WALK.  
 CONFIRM  
 LOCATION.

SANITARY MANHOLE RM 851.13  
 N.W. & S.E. 12" CLAY INV. 844.58

MOUNTABLE  
 CURBING

ACCESS ROUTE  
 TO McDONALD'S  
 FROM DARBO

PARCEL AREA  
 48,646 SQ.FT.  
 1.1167 ACRES

CONCRETE CORNER  
 0.2' CLEAR

CONCRETE CORNER  
 0.7' CLEAR

CONCRETE CORNER  
 0.1' OVERLAP

CONCRETE CORNER  
 0.2' CLEAR

CONCRETE CORNER  
 0.2' CLEAR

CONCRETE WALK

SANITARY MANHOLE RM 850.47  
 N.W. 12" CLAY INV. 844.43  
 N.E. 12" CLAY INV. 844.27

STORM SQUARE INLET RM 848.85  
 N.E. 15" R.C.P. INV. 845.80  
 S.W. 27" R.C.P. INV. 845.80

COMPLETELY DRY (ABANDONED?)  
 SANITARY MANHOLE RM 853.28  
 N.E. 8" CONCRETE INV. 845.57  
 S.W. 8" CONCRETE INV. 847.00  
 W. 8" CONCRETE INV. 847.00

BENCHMARK  
 SET CHEELED SQUARE  
 ON TOP OF WEST SIDE OF  
 CONCRETE LIGHT POLE  
 BASE. ELEVATION=854.14

METAL AND PLASTIC  
 OVERHEAD McDONALD'S SIGN  
 ON 4"X4" STEEL COLUMN

1-STORY MASONRY  
 BUILDING

ELECTRIC TRANSFORMER

4587 Bldg

BIKE RACK

ACCESS ROUTE  
 TO McDONALD'S  
 FROM PEDESTRAIN  
 BRIDGE AND WALK

PROPOSED  
 CONNECTION TO  
 PEDESTRAIN  
 BRIDGE AND WALK.  
 CONFIRM  
 LOCATION.

SANITARY MANHOLE RM 851.13  
 N.W. & S.E. 12" CLAY INV. 844.58

MOUNTABLE  
 CURBING

ACCESS ROUTE  
 TO McDONALD'S  
 FROM DARBO

PARCEL AREA  
 48,646 SQ.FT.  
 1.1167 ACRES

CONCRETE CORNER  
 0.2' CLEAR

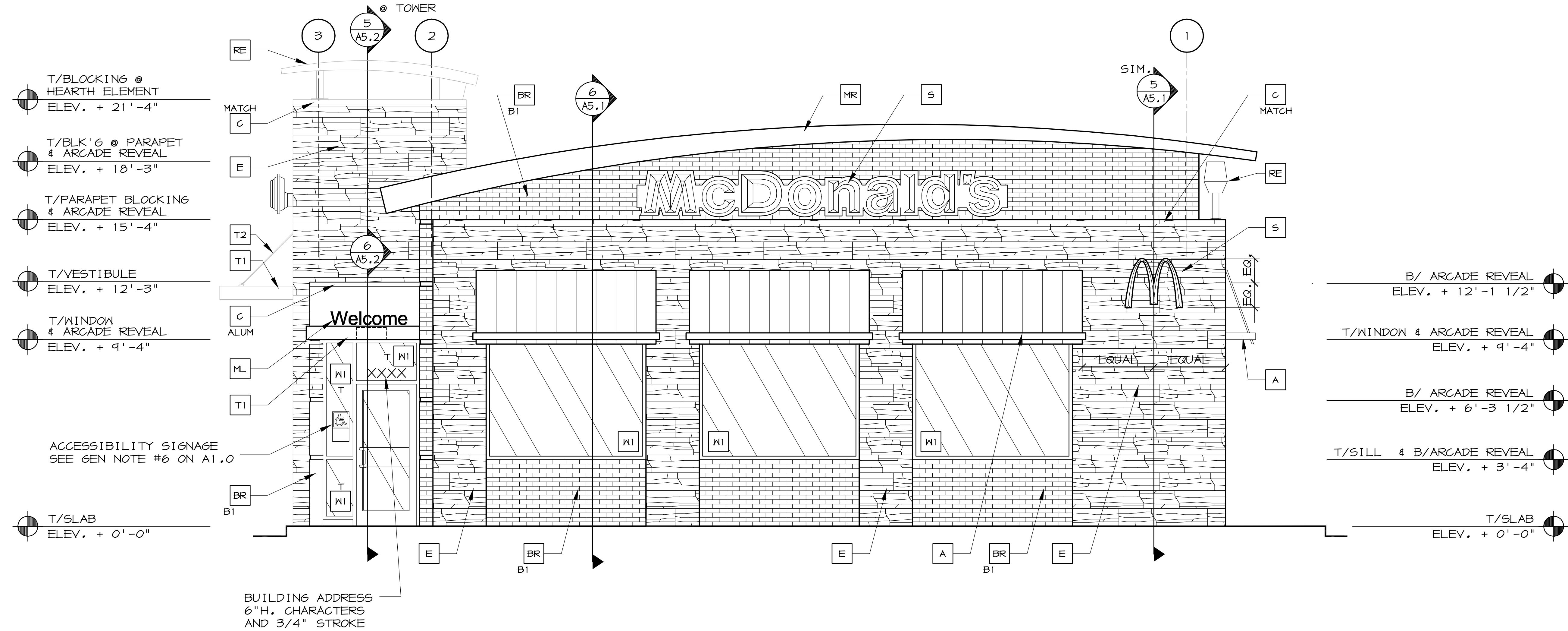
CONCRETE CORNER  
 0.7' CLEAR

CONCRETE CORNER  
 0.1' OVERLAP

CONCRETE CORNER  
 0.2' CLEAR

CONCRETE CORNER  
 0.2' CLEAR

CONCRETE WALK



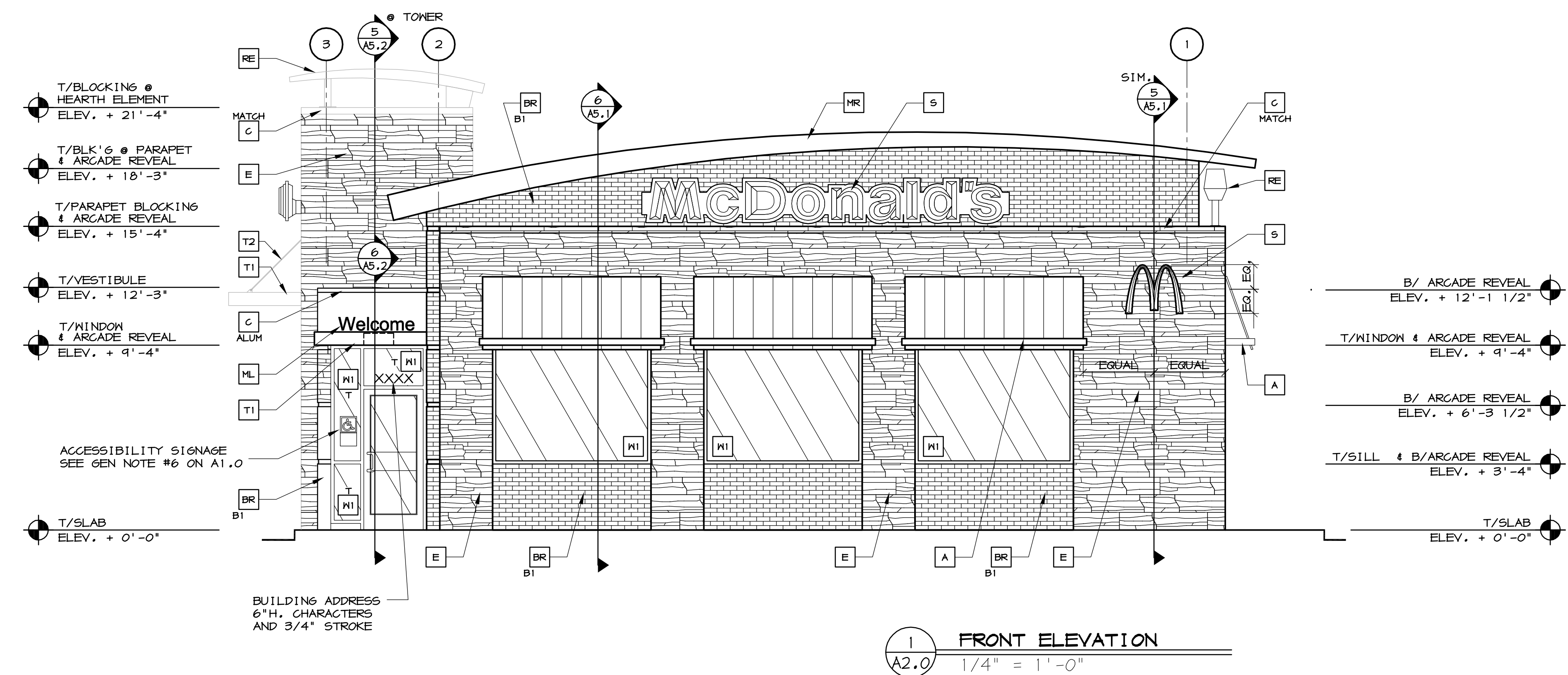
1 FRONT ELEVATION  
A2.0 N.T.S.

SHEET NO.	TITLE	DATE	BY	REVISIONS	
				REV	DATE
00-0000.00.0	2007 STANDARD BUILDING	APRIL 2007			
00-0000.00.0	4587-WOOD/WOOD	APRIL 2007			
00-0000.00.0	WOOD BEARING WALLS W/4" BRICK EXTERIOR FINISH	APRIL 2007			
00-0000.00.0	WOOD ROOF TRUSS FRAMING	APRIL 2007			
00-0000.00.0	EXTERIOR FINISH ARCADE/ENTRY	APRIL 2007			
00-0000.00.0	SITE ADDRESS	APRIL 2007			
00-0000.00.0		APRIL 2007			
00-0000.00.0		APRIL 2007			
00-0000.00.0		APRIL 2007			
00-0000.00.0		APRIL 2007			

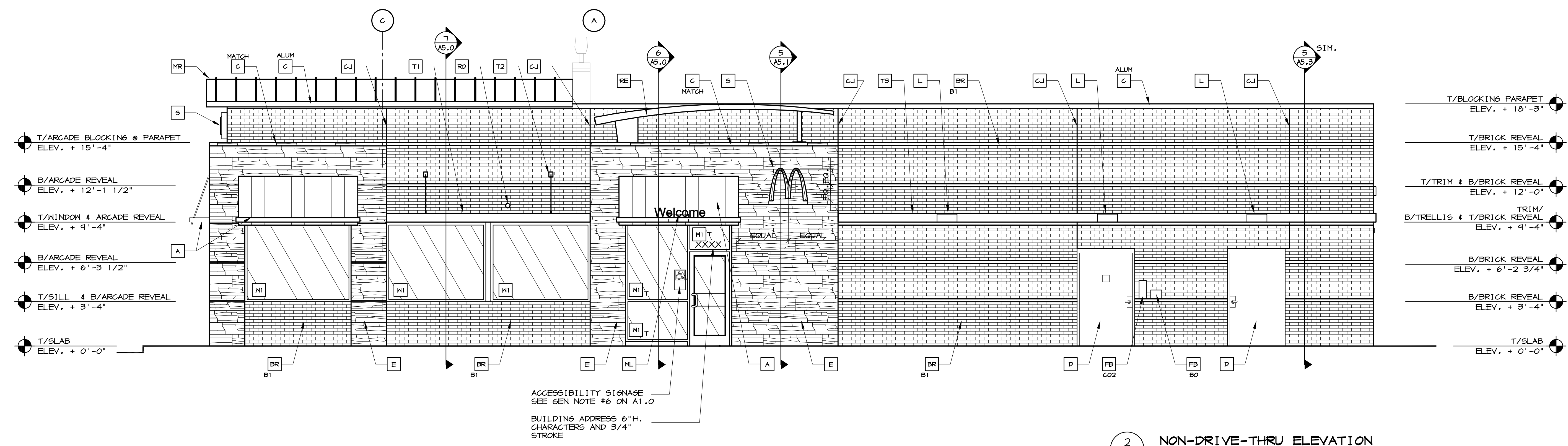
PREPARED FOR: **McDonald's USA, LLC**  
 © 2007 McDonald's USA, LLC  
 These drawings and specifications are the confidential and proprietary property of McDonald's USA, LLC and shall not be copied or reproduced in any form without the express written consent of McDonald's USA, LLC. For use on this specific site in connection with this issue date. These drawings for reference or example on another project requires the contract documents for use on another project is not authorized.

DRAWN BY: \_\_\_\_\_  
 SPT ISSUE DATE: APRIL 2007  
 REVIEWED BY: USRD TEAM  
 DATE ISSUED: APRIL 2007

K:\DV\BRAND INTEGRITY\CENTRAL\BRAND REVIEW\048-0026-00-RV-4587\ML\_A2-0\_A2-1.dwg 05-24-2007 14:52



1 FRONT ELEVATION  
1/4" = 1'-0"



2 NON-DRIVE-THRU ELEVATION  
1/4" = 1'-0"

KEY NOTES:

- A METAL AWNING - UNDER SEPARATE PERMIT. COLOR TO BE ALTERNATING STRIPES TO MATCH PANTONE 123C AND 104C
- BR FACEBRICK  
COLOR:  
B1 = "RUBI60 RED VELOUR" BY BELDEN OR EQUAL  
B2 = "MODULAR MIDLAND BLEND A" BY BELDEN OR EQUAL
- C METAL COPING - COLOR = ALUMINUM ALUM
- C METAL COPING - COLOR TO MATCH SURROUNDING MATERIAL MATCH
- CJ CONTROL JOINT, SEE DETAIL 7/A4.1
- D HOLLOW METAL DOOR - PAINT TO MATCH COLOR OF SURROUNDING MATERIAL
- E CULTURED STONE
- FB CO2 FILL BOX (EGPM SCHEDULE ITEM 41.00) CO2
- FB OPTIONAL BULK OIL FILL BOX (EGPM SCHEDULE ITEM 100.18) - CONFIRM USE WITH MCD PROJECT MANAGER
- L LIGHT FIXTURE (WALL SCONCE) - SEE ELECTRICAL
- ML METAL LETTERING - BY OTHERS
- MR METAL ROOF - STANDING SEAM W/ALUMINUM FINISH FASCIA TRIM, COLOR TO BE "YELLOW" - PANTONE COLOR #104U\*
- PB PIPE BOLLARD - PAINTED YELLOW
- PT PASS-THRU COIN COLLECTOR - OPTIONAL (R#4C)
- RE ROOF GAP ELEMENT BY OTHERS
- RO ROOF DRAIN OVERFLOW PIPE PAINT TO MATCH SURROUNDING MATERIAL
- S McDONALD'S SIGNAGE BY OTHERS - UNDER SEPARATE PERMIT, SEE SIGNAGE SUPPORT NOTE ON THIS SHEET.
- T1 ALUMINUM TRELLIS
- T2 TRELLIS TIE-BACK
- T3 2' x 8" WALL FASCIA - REFER TO SIM, DETAIL 3 ON SHEET A5.1
- X1 EXTERIOR WINDOW ASSEMBLY - SEE ASSEMBLY NOTES ON SHEET A5.0  
T = TEMPERED GLASS
- X2 DRIVE-THRU WINDOW BY READY ACCESS - CONFIRM MODEL, OPTIONS, AND SIZE WITH MCD PROJECT MANAGER  
OPTIONS INCLUDE:  
TRANSOM (SHOWN); AIR CURTAIN; FLYPAN/TRANSOM # 432 SQ IN MAX SERVICE OPENINGS (WHERE REQD BY CODE)  
SLIDE DIRECTION:  
RL = RIGHT TO LEFT  
LR = LEFT TO RIGHT

**STRUCTURAL NOTE:**  
UNIBODY FASCIA SIGN WALL SUPPORTS TO BE VERIFIED WITH McDONALD'S AREA CONSTRUCTION MANAGER AND COORDINATED WITH SIGN MANUFACTURER.

PREPARED BY: McDonald's USA, LLC

© 2007 McDonald's USA, LLC. These drawings and specifications are the confidential and proprietary property of McDonald's USA, LLC and shall not be copied or reproduced in any form without the prior written consent of McDonald's USA, LLC. Use of these drawings for reference or example on another project requires the contract documents for reuse on another project is not authorized.

TITLE	2007 STANDARD BUILDING	00-0000.00.0
SHEET NO.	4587-WOOD/WOOD	A2.0
DATE	APRIL 2007	ELEVATIONS
REVIEWED BY	USRD TEAM	
DATE ISSUED	APRIL 2007	
DESCRIPTION	WOOD BEARING WALLS W/4" BRICK EXTERIOR FINISH	
	WOOD ROOF TRUSS FRAMING	
	EXTERIOR FINISH ARCADE/ENTRY	
	SITE ADDRESS	
	XXX-XXXX	