

2904 Dryden Drive

Contract No.: 9192, Project No.: 14241

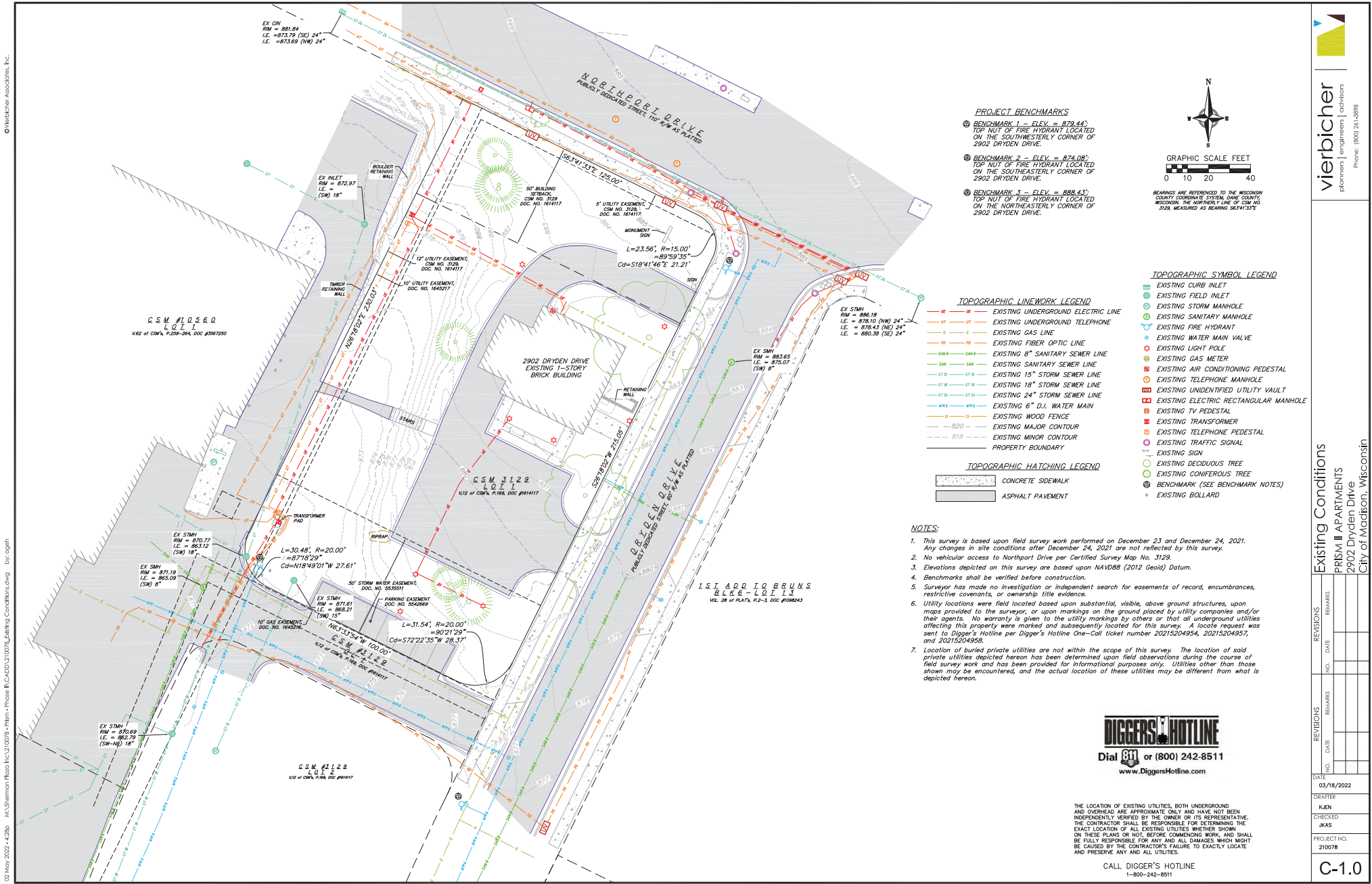
Entity Name: Prism Development LLC



Private Development Work:

- Temporary/permanent storm and sanitary sewer plugs
- Private sanitary, water, and storm sewer connections.
- New curb inlet on Northport Drive for storm lateral connection.
- Sidewalk and curb and gutter replacement as needed.
- Concrete and asphalt pavement patches per City patching criteria.
- Traffic control, pavement markings, and signing as required by Traffic Engineering.
- Tree protection for existing terrace tree on Northport Drive
- Four new trees as directed by City Forestry.

Sanitary sewer and storm temporary/permanent plug permits
Remove northern most existing driveway apron
Protect terrace tree on Northport Drive



vierbicher
planners | engineers | advisors
Phone: (800) 242-8898

Existing Conditions

PRISM II APARTMENTS

2902 Dryden Drive

City of Madison, Wisconsin

NO.	DATE	REVISIONS	REMARKS
1	03/18/2022		
2			
3			
4			
5			
6			
7			
8			
9			
10			

DATE: 03/18/2022

DRAWN: KJEN

CHECKED: JKAS

PROJECT NO.: 210078

C-1.0

Private storm, sanitary and water lateral connections. New curb storm inlet at storm lateral connection on Northport Drive.
 Concrete and asphalt pavement repairs per City of Madison Pavement Patching criteria
 Traffic control, pavement markings and signing as required by Traffic Engineering.
 Plant four new terrace trees as directed by City Forestry.

