

## REAL STORIES AND CHALLENGES



Her son had surgery last summer. One day later he was discharged from the hospital and back on the streets. As a result, they made numerous trips to the emergency room when he experienced complications\*.



Their one year old child needs surgery to correct a birth defect, but has to keep putting it off because they are homeless and have no place for recover.

\*Client identities have been protected.

## SOLUTIONS



Healing House fills a support gap for families that are homeless and have an immediate family member in need of medical care.

The program can be a model for future medical respite for homeless individuals and couples with similar needs. There are 63 medical respites nationwide; Healing House would be the first medical respite in Wisconsin. According to the National Health Care for Homeless Council Survey of Medical Respite Programs, the cost per day to stay in a medical respite program is significantly less than the cost per day in a hospital.

Healing House creates a safety net for vulnerable families in Dane County. Here, children and parents can focus on recovery while getting assistance to find permanent housing and employment. This approach strengthens the family and increases their chances at long-term success. Through Madison-area Urban Ministry, you can help local families reach their full potential in a nurturing, caring environment.

*Healing House  
is that environment.*

# HEALING HOUSE

*"A Partnership for  
Compassionate Care"*

Madison-area Urban Ministry  
2115 South Park Street  
Madison, WI 53713  
608-256-0906  
[www.emum.org/healinghouse](http://www.emum.org/healinghouse)





# WHAT IS HEALING HOUSE ?

## A program of Madison-area Urban Ministry offering the first medical respite of its kind in Wisconsin

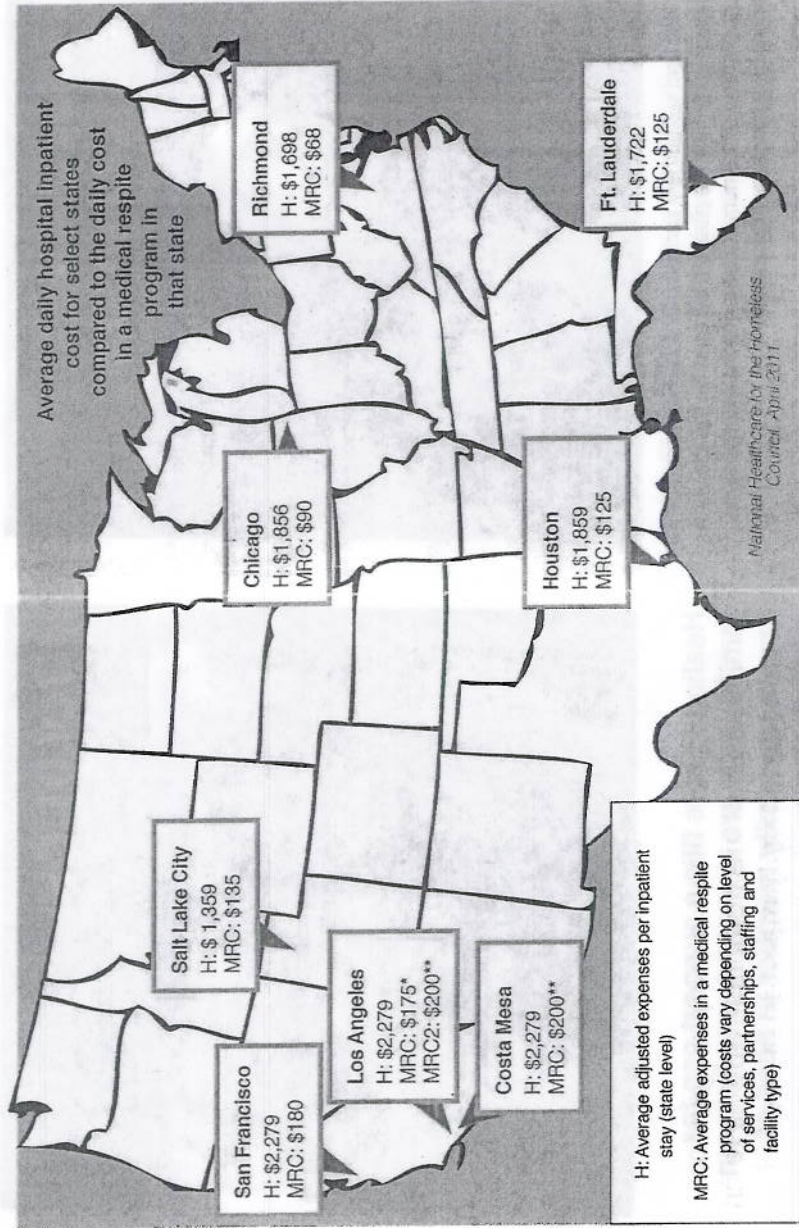
- Medical respite care to families who are homeless and have an immediate family member in need of ongoing care during recovery
- Professional staff onsite 24/7, with a 28-day maximum length of stay
- Referrals to medical care and case management to obtain stable housing and employment
- Significant cost-savings for local hospitals and communities

## BENEFIT TO THE COMMUNITY

### The anticipated outcomes for Healing House families include:

- 85% reduction in hospital or emergency readmissions of Healing House residents
- 70% success rate in obtaining transitional or permanent housing at the time of leaving Healing House
- 100% of Healing House residents connected with community support services to increase long-term stability

*“Medical respite in Cincinnati, Ohio resulted in \$6.2 million cost savings for local hospitals over three years.”*



## BUILDING AND LOCATION:

Healing House will occupy the John M. Parkinson house in Madison's University Heights Historic District. This central location allows us to serve families from all over Dane County. Built in the Prairie School architectural style in 1907, the facility will provide medical respite, community services and referrals to more than 80 people each year. Your contribution enables us to properly refurbish and operate the building.



## WAYS TO SUPPORT

We need your support to make Healing House a reality. Please give generously through:

- Gifts of cash or check (credit cards accepted)
- Gifts of stocks or bonds
- Gifts of time
- Donations of construction materials, equipment and furnishings (please inquire)

Contact Nasra at 608-338-8212 or nasra@emum.org for details.

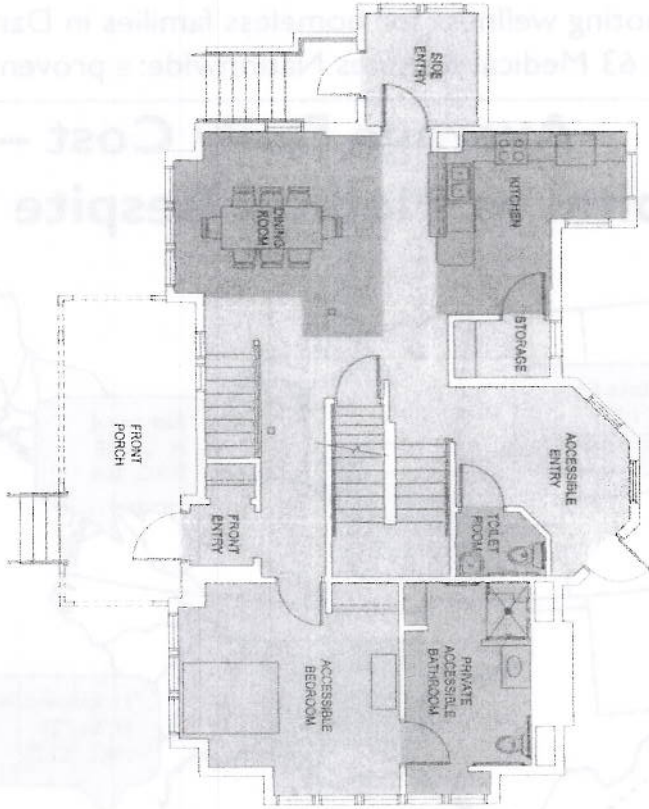
Thank you!



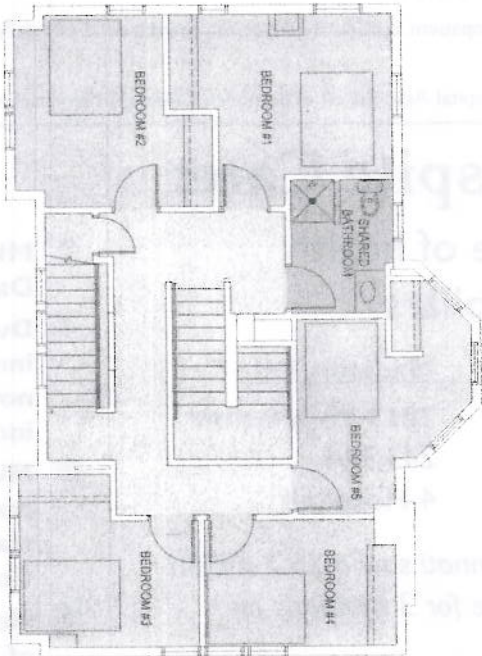


**STRANG**

FIRST FLOOR PLAN  
SCALE 1/8" = 1'-0"



SECOND FLOOR PLAN  
SCALE 1/8" = 1'-0"



FIRST CONGREGATIONAL CHURCH  
303 LATHROP REMODEL  
PROPOSED FLOOR PLANS

# Healing House

A cost effective alternative for hospitals and community  
 Promoting wellness for homeless families in Dane County  
 There are 63 Medical Respites Nationwide: a proven model of care

## Average Daily Cost – Hospital vs. Medical Respite Center

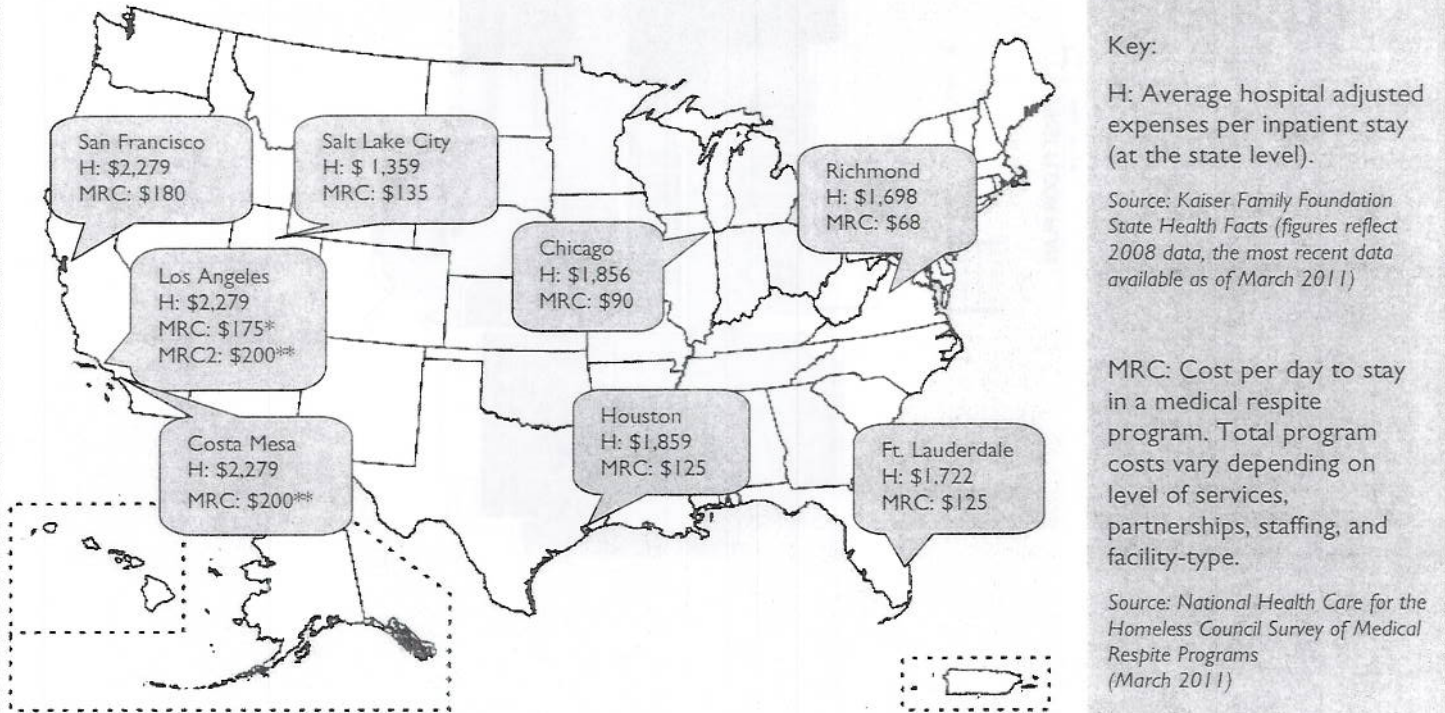


Figure 3: Average daily hospital inpatient cost for select states compared to the daily cost in a medical respite program in that state.

\*JWCH Institute, Inc.

\*\*National Health Foundation/Hospital Association of Southern California/Illumination Foundation

## Medical Respite Care:

Efficient use of health  
 care dollars

Cincinnati, OH*	Madison, WI
<b>2013 Population</b> 297,517	<b>2013 Population</b> 243,344
3 Hospitals	4 Hospitals

In a comparable city, Cincinnati saw a \$6.2 million total annual cost avoidance for 3 hospitals and community.

\*Medical Respite in Cincinnati, OH not shown on above map

## Why MUM?

- ☀ MUM has been a voice for social justice in Dane County for over 40 years.
- ☀ During our history, sixteen of the most innovative and community building nonprofits in the area were conceived, incubated and hatched by MUM.
- ☀ MUM's staff are compassionate, specially trained individuals with years of experience standing with the poor and hurting of Dane County.
- ☀ Healing House is a concept born of decades of MUM work.
- ☀ MUM identifies community needs and figures out a way to help meet those needs.