

**Time:** 9/24/2019 1:38:44 PM

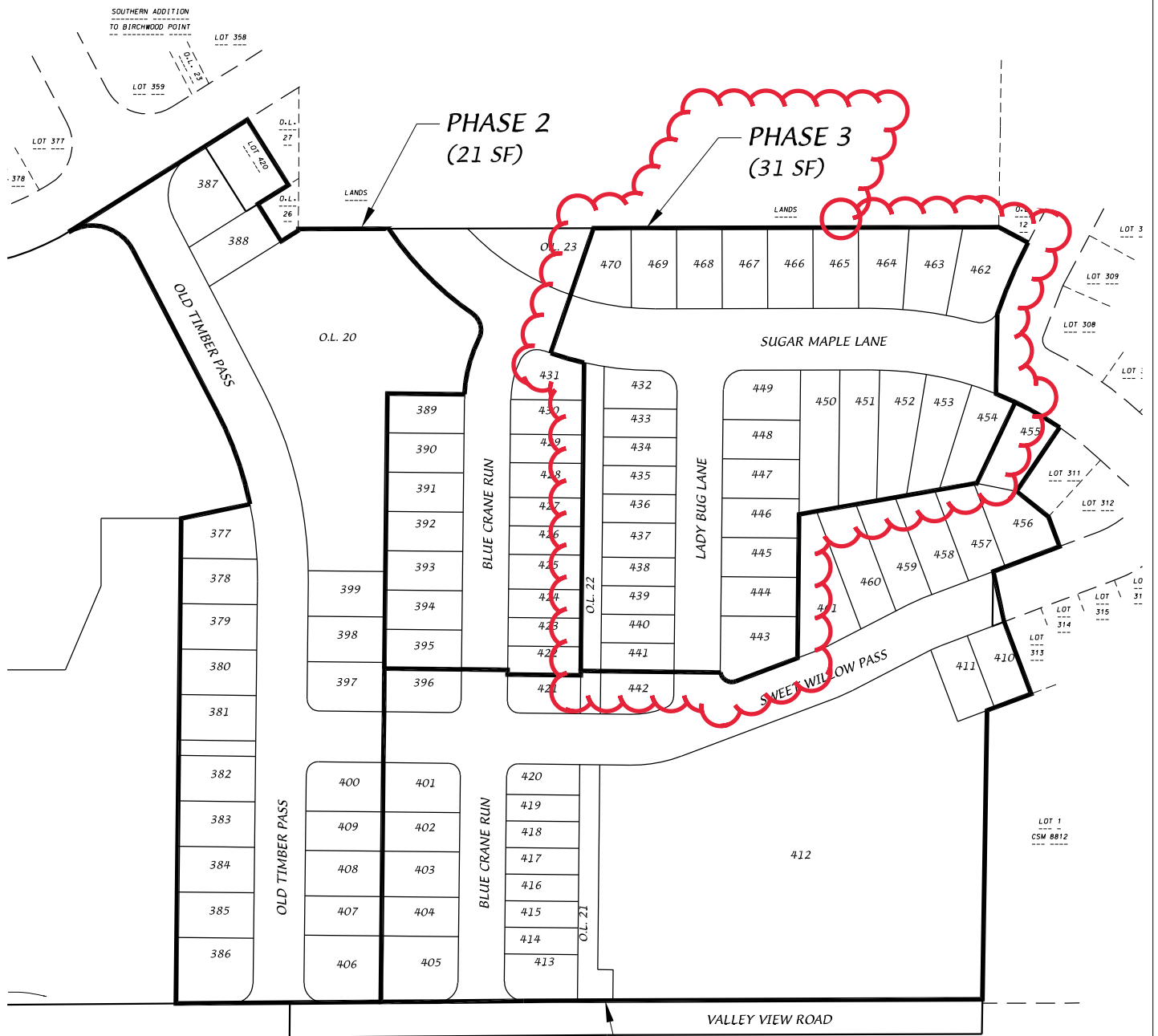
**Session:** C:\GTViewer\_Sessions\Deming & Fourier SW.gts

**City of Madison, WI - GIS/Mapping data**

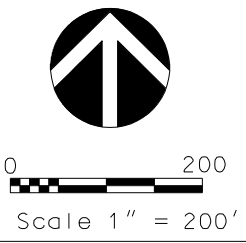
Printed By: entnt

Disclaimer: The City makes no representation about the accuracy of these records and shall not be liable for any damages

# Western Addition to 1000 Oaks



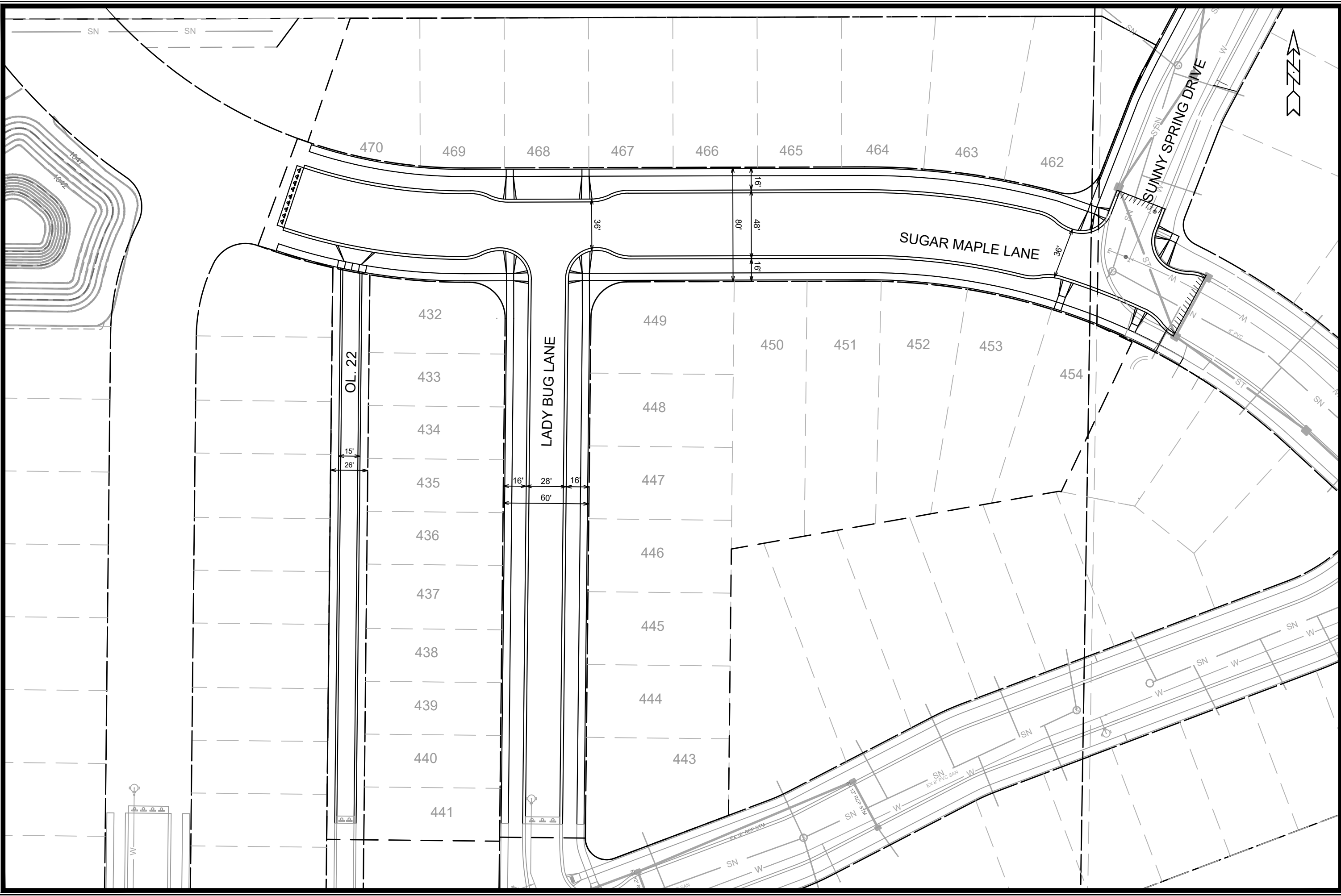
**D'ONOFRIO KOTTKE AND ASSOCIATES, INC.**  
 7530 Westward Way, Madison, WI 53717  
 Phone: 608.833.7530 • Fax: 608.833.1089  
 YOUR NATURAL RESOURCE FOR LAND DEVELOPMENT



**PHASE 1**  
 (17 SF, 8 TWINS & 1 MF)

DATE: 07-28-21  
 F.N.: 20-05-144  
 REV.

DRAWN BY: ATF



MARK	REVISION	DATE	BY
###	###	###	###
###	###	###	###
###	###	###	###
###	###	###	###

13855  
 MADISON, WI  
 CONTRACT NO: 9096

EXHIBIT  
 WESTERN ADDITION TO 1000 OAKS PHASE 3  
 M:\DESIGN\Projects\13855\CAD\Streets\13855EN-Street\Network.dwg

13855  
 1



Designed By: ###  
 Date: 1/25/2022 1:54 PM  
 Scale: 1/80  
 13855