

**APPLICATION FOR
URBAN DESIGN COMMISSION
REVIEW AND APPROVAL**

AGENDA ITEM # _____
Project # _____

DATE SUBMITTED: _____	Action Requested
UDC MEETING DATE: _____	<input type="checkbox"/> Informational Presentation
	<input type="checkbox"/> Initial Approval and/or Recommendation
	<input type="checkbox"/> Final Approval and/or Recommendation

PROJECT ADDRESS: 4303 EAST TOWN WAY

ALDERMANIC DISTRICT: _____

OWNER/DEVELOPER (Partners and/or Principals) ARCHITECT/DESIGNER/OR AGENT:

RUTH METZ / ANIMART GRANT SIGNS / MICHAEL OLKWITZ

CONTACT PERSON: MICHAEL OLKWITZ
Address: 5119 TERMINAL DR.
MC FARLAND WI 53558
Phone: 608-838-7794
Fax: 608-838-7798
E-mail address: MOLKWITZ@GRANTSIGNS.NET

TYPE OF PROJECT:

(See Section A for:)

- Planned Unit Development (PUD)
 - General Development Plan (GDP)
 - Specific Implementation Plan (SIP)
- Planned Community Development (PCD)
 - General Development Plan (GDP)
 - Specific Implementation Plan (SIP)
- Planned Residential Development (PRD)
- New Construction or Exterior Remodeling in an Urban Design District * (A public hearing is required as well as a fee)
- School, Public Building or Space (Fee may be required)
- New Construction or Addition to or Remodeling of a Retail, Hotel or Motel Building Exceeding 40,000 Sq. Ft.
- Planned Commercial Site /REVISION/CONTINUATION OF SIGN PACKAGE

(See Section B for:)

- New Construction or Exterior Remodeling in C4 District (Fee required)

(See Section C for:)

- R.P.S.M. Parking Variance (Fee required)

(See Section D for:)

- Comprehensive Design Review* (Fee required)
- Street Graphics Variance* (Fee required)
- Other _____

*Public Hearing Required (Submission Deadline 3 Weeks in Advance of Meeting Date)

Where fees are required (as noted above) they apply with the first submittal for either initial or final approval of a project.

EXHIBIT "B"

SIGN POLICY

Lien Crossing Complex

The purpose of this document is to provide guidelines for the signing system manufacturing and installation of Lien Crossing Complex, Madison Wisconsin. This document is a working tool for use as a guideline for Tenant signage and for fabricator, giving specific information about signing materials and procedures to be used on this project, and a control manual for use by Lien Crossing for additions with each new Tenant.

The following signage standards and specifications for Lien Crossing shall adhere to by all Tenants and may only be altered upon landlord's review and approval. This includes all exterior signs, tenant windows, regulations signs and temporary signage.

Signs and maintenance will be the responsibility of the Tenant, including the replacement of damage to signs, should they be necessary, with cost of reproducing the copy and/or maintenance paid by the tenant. Any signs placed in common areas shall be in design, size, and location, completely at the discretion of the landlord.

This Exhibit comprises the sole governing regulations in any agreement between Landlord and tenant with reference to tenant signage. Nothing written in City of Madison Ordinances less restrictive than regulations set forth herein shall be constructed as permissible. All signs shall comply with regulations of the City of Madison Ordinances with respect to further restrictions set forth herein. It is the responsibility of the tenants to conform to City of Madison Sign Ordinances and Criteria herein.

The Landlord may when they find it beneficial to the center, or suitable for any reason, allow (solely at their discretion) deviation from following requirements.

SIGNAGE GUIDELINES

Standard Tenant Signage

1. Scope of Tenant Signage

1.1 Individual tenant identification shall conform in size configuration, color, and installation as specified herein and shown in the accompanying drawing, Lease Exhibit B.1 "Wall Mounted Sign". Signage for purposes of these specifications shall include:

1.1a Wall-mounted Sign

1.1b Tenant Panel on freestanding monument

2. Limitations to Tenant Signage

2.1 "Tenant Panel Copy" shall be limited to the copy established in Tenant Lease Agreement. Additional copy describing the type of business conducted is

prohibited, except as noted herein. Submit to Landlord for approval in accordance with 4.3 “Approval Procedures”.

- 2.2 ‘Trademark/Logo’ graphic identification shall be limited to Tenant’s trademark/logo design as established in Tenant Lease Agreement. Submit to Landlord for approval in accordance with 4.3 “Approval Procedures”

3. **Size, Construction, Illumination, Configuration, and Color**

- 3.1a Tenant identification copy for building-mounted signs shall conform to all regulations set forth in Chapter 31 of Madison General Ordinances.
- 3.1b The maximum allowable sign area permitted by these criteria shall not exceed any of the sign band area of the tenant’s space. The exception is made for the anchor tenant.
- 3.1d Construction of Building Mounted Sign
- 3.1.e All wall signs shall be rectangular cabinets. All construction of aluminum. Signs to have .125aluminum routed faces backed with .150 white modified acrylic. Tenant copy to 1/4” aluminum stud mounted characters mounted 1” off the acrylic panels.
- 3.1f Illumination shall be internal VHO fluorescent illumination. All signs to be serviceable through top panels onl
- 3.1g All cabinet and aluminum front face color to be painted Akzo Nobel metallic grey FLNA9146.
- 3.1h Color of tenant identification copy shall be limited top two colors and approved By landlord or landlord’s representative. One of the colors from the graphic area must border (inline) the sign face per example. Submit color samples in accordance with 4.3 “Approval Procedures.
- 3.1i All signs to be built in accordance to pre-approved drawings.

3.2 **Tenant copy panels on Monument Sign.**

- 3.2a Tenant panel faces to reverse copy on 3/16” white acrylic. Opaque vinyl graphic applied first surface. Vinyl to be painted Akzo Nobel 352-h5.

4. **Tenant Responsibilities, Owner Responsibilities, Approval Procedures**

- 4.1 Tenant Responsibilities-Tenant shall provide and install all tenant signage and Mounting hardware described herein at tenant expense. Application and payment For all permits for signs described herein shall be the sole responsibilities of the Tenant. Maintenance of tenant signage and electrical circuits, in its entirety shall be the responsibility of the tenant.

4.3

Approval Procedures

- 4.3a Tenant shall submit to landlord for approval one (1) drawing describing Tenant Identification copy for all signs. Such drawings shall include method of attachment, size configuration and location of sign faces and Tenant Identification copy. Upon approval, Landlord will return one (1) Copy of drawing to Tenant to proceed with permit process and installation.
- 4.3b Tenant shall apply for and obtain all necessary City of Madison sign permits and submit to Landlord proof of permit to install signage.

Temporary Signage

Temporary signage will only be used in the absence of permanent signage, not in addition. Temporary signage may be displayed upon occupancy of individually tenant space, and must be taken down as soon as permanent signage can be installed. The temporary signage shall be silk Screened or vinyl onto a canvas material with grommet holes. The banner shall be tied to the structure in a manner that does not damage the building, flap excessively in the wind, rip or detach easily. The banner shall reflect the type style and size of permanent sign, and shall not include any additional copy, (i.e. "Opening soon", "New Location"). All temporary signage must be approved by landlord prior to installation and must be removed within 45 days of occupancy.

GENERAL INFORMATION

General Information

Stated dimension on the drawing shall take precedence over scaled dimensions. Installation of the signage shall be by the sign manufacture or by others.

All materials shall be new stock, free from defects impairing strength, durability and appearance. All fabrication and installation shall be in accordance with the highest standards of the trade. All signs and components shall be complete and free from visual and structural/mechanical flaws. No fabrication or installation materials or procedure shall be used that will in any way change the visual quality or in any manner have an adverse effect on existing materials and surface in Grandview Commons.

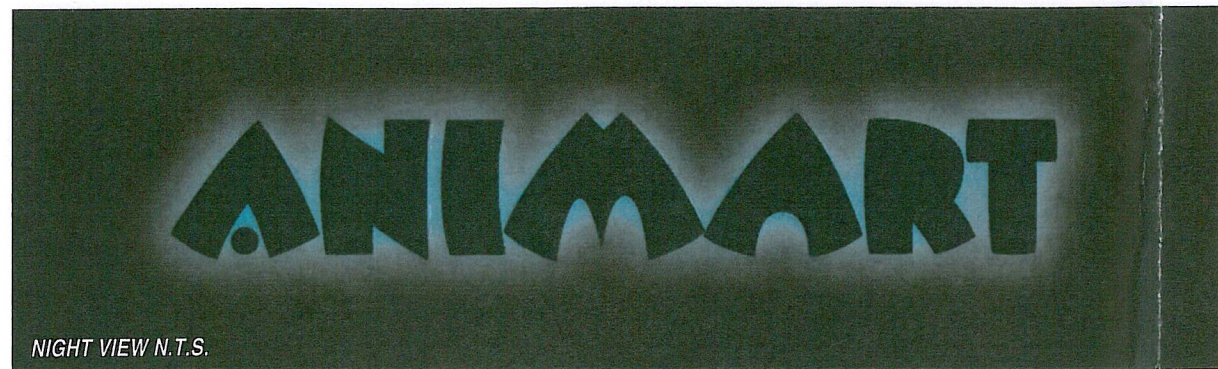
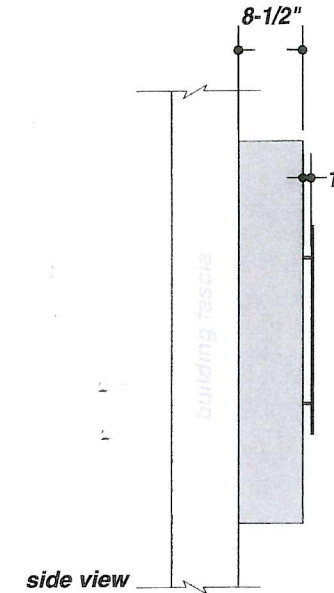
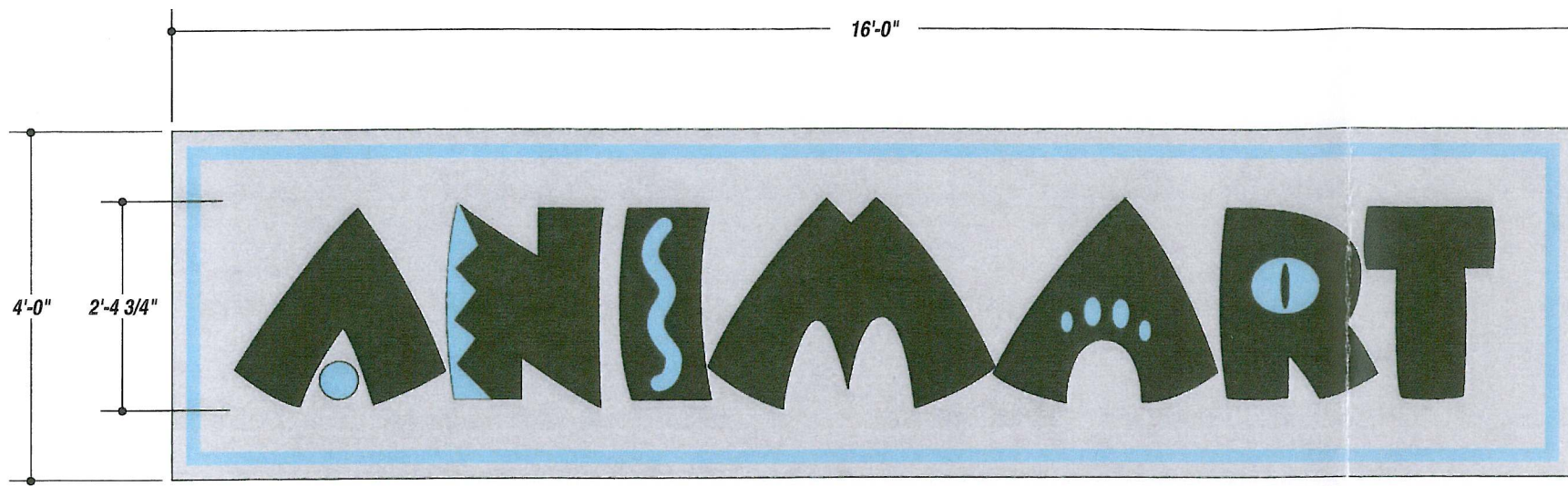
Upon vacating premises, Tenant shall at Tenant's sole expense, restore all building facia to its original condition. Plastering and painting contractor and proposal must be approved by Landlord. Repairs shall be completed by re-plastering and painting the facia. Patching holes is not an acceptable method of repair.

Illumination

The sign face shall be illuminated evenly with no hot spots. Use weather proof commercial grade fixtures and fittings, code approved for exposed conditions.

Mounting/Fastening Methods

No visible mounting brackets or fasteners are allowed. All signs mounted flat to the building shall be just that, flat with to visible space between the exterior wall and the back panel of the sign.



- 3630-236 TURQUOISE
- AKZO NOBEL 331-A3
- AKZO NOBEL METALLIC GREY FLNA9146
- AKZO NOBEL 352-H5

JOB DESCRIPTION
S/F ILLUMINATED EXTERIOR CABINET MOUNTED TO BUILDING FASCIA

FABRICATE CABINET FROM ABC SMALL A .125 ROUTED ALUMINUM FACE BACKED W/ .150 WHITE MODIFIED ACRYLIC. APPLY FIRST SURFACE VINYL TO ACRYLIC. STUD MOUNT 1/4" FLAT CUT PAINTED LETTERS 1" OFF OF ACRYLIC. APPLY FIRST SURFACE VINYL (CUT LETTERS 1/8" SMALLER THAN ROUTED OUT AREA) PAINT BACK OF LETTERS WHITE. LAMP USING FLUORESCENTS.

R1: 10-10-06 • AJG • CHANGED TO CABINET

FILE NAME 15136-06-1 DATE 8.24.06 SCALE 1/2"=1'

JOB NAME ANIMART

LOCATION MADISON, WI

DRAWN BY EM SALESMAN MICHAEL OLKWITZ

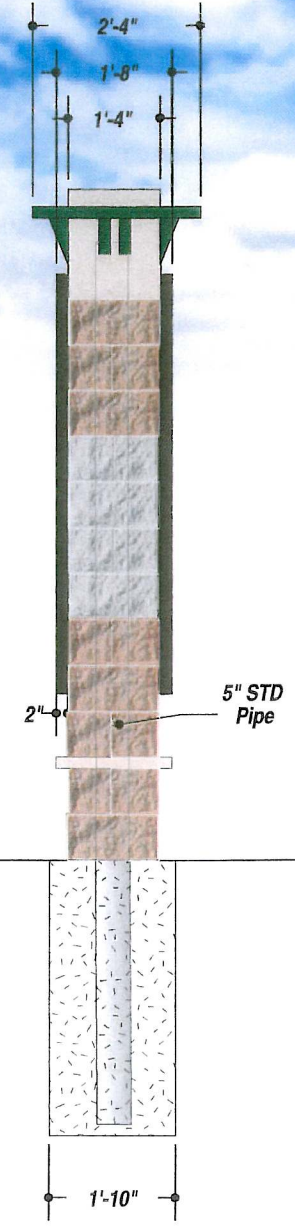
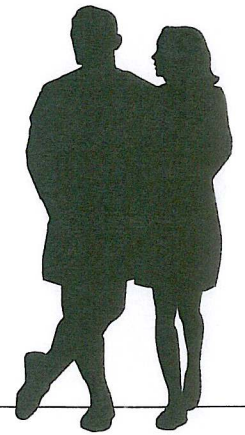
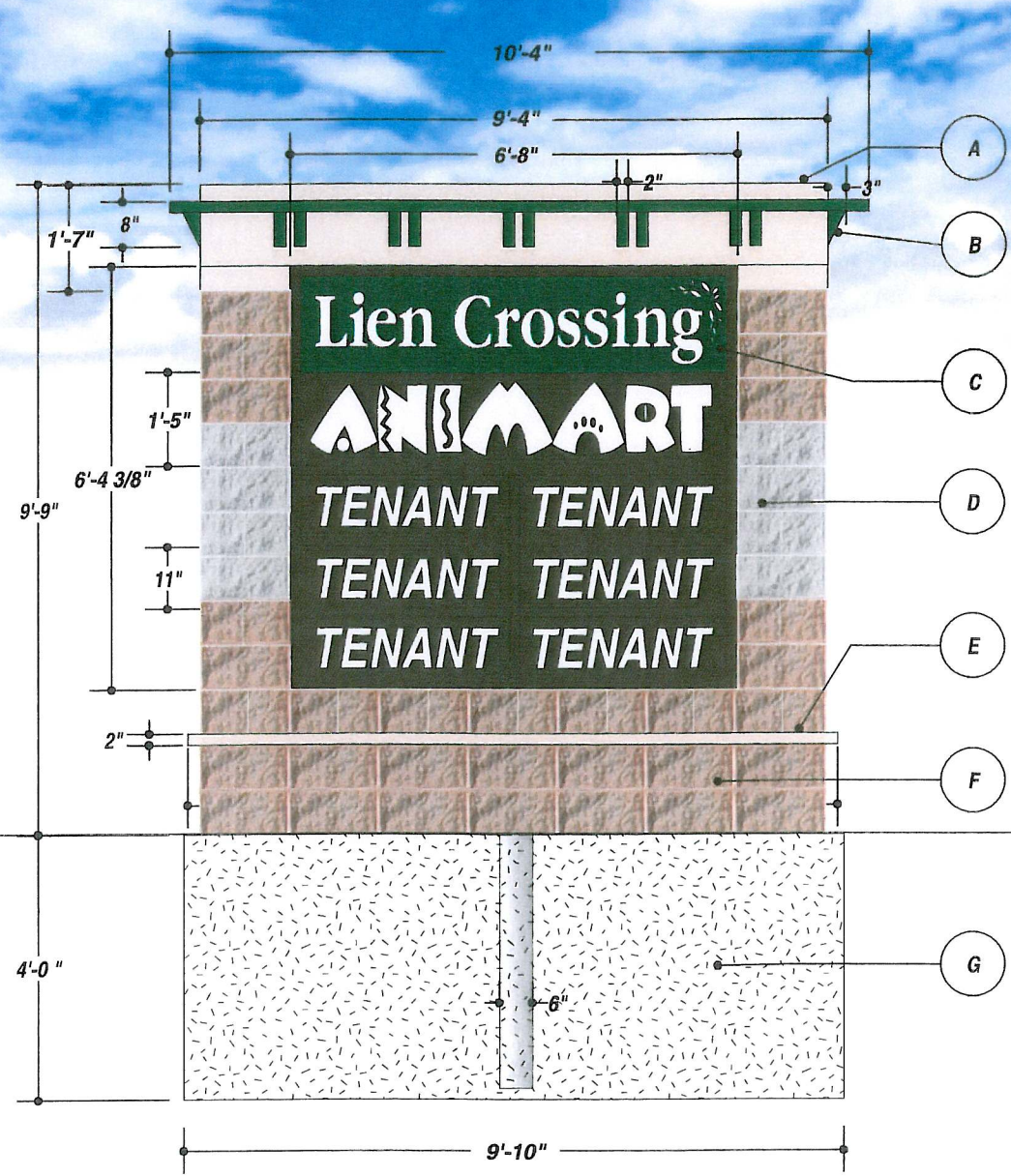
DESIGN APPROVED BY: *Michael Olkwitz*
AUTHORIZED SIGNATURE

UNLESS OTHERWISE SPECIFIED:
• ALL FLUORESCENT LAMPS WILL BE T12-CW-HO LAMPS. • ALL BALLASTS WILL BE COLD START ALL-WEATHER BALLASTS. • ALL NEON TRANSFORMERS WILL BE 30 MILLIAMPS. • 120 PRIMARY POWER TO SIGNS WILL BE BY OTHERS. • ALL DATA LINES TO ELECTRONIC SIGNAGE WILL BE BY OTHERS. • ALL PAINT COLORS WILL BE SEMI-GLOSS FINISH.

THIS IS AN ORIGINAL COMPUTER GENERATED COLOR PRINT. CREATED FOR YOUR PERSONAL USE IN CONNECTION WITH A PROJECT BEING PLANNED FOR YOU BY SIGN PRODUCTIONS, INC. COLORS REPRESENTED ON THIS PRINT MAY NOT MATCH THE PMS CHIP, VINYL OR PAINT COLORS EXACTLY. IT IS TO BE VIEWED AS A COLOR REPRESENTATION ONLY. THIS PRINT IS NOT TO BE SHOWN TO ANYONE OUTSIDE OF YOUR ORGANIZATION, NOR IS IT TO BE REPRODUCED, COPIED OR EXHIBITED IN ANY FASHION. IF NOT RETURNED WITHIN THIRTY DAYS FROM DATE, WE RESERVE THE RIGHT TO CHARGE FOR THE CREATIVE TIME INVOLVED IN ITS DEVELOPMENT.

IF THIS PRINTS ONTO ARTWORK PAGE THE FILE HAS BEEN SIZED TO FIT PAPER AND WILL NOT BE TO SCALE - UNCHECK THE FIT TO PAGE BOX IN ADOBE ACROBAT TO PRINT A SCALE PRINT

IF THIS PRINTS ONTO ARTWORK PAGE THE FILE HAS BEEN SIZED TO FIT PAPER AND WILL NOT BE TO SCALE - UNCHECK THE FIT TO PAGE BOX IN ADOBE ACROBAT TO PRINT A SCALE PRINT



Centroid Height: 4.875 ft
 Sign Area: 90.960 sq ft
 Number of Support Columns: 1
 Steel type: new
 Wind Pressure: 30.000 lbs/ sq ft

Section Modulus: 5.321 per column
 Schedule 40 pipe (inches,ROUND): 5.000 each column

Caisson type: Rectangular

Footing Depth: 4.000 ft per column
 Valid Footing Width: 9.830 ft per column
 Concrete Yards: 2.647 yards total

- AKZO NOBEL 352-H5
- AVERY A9693
- AKZO NOBEL FLNA8204

JOB DESCRIPTION
 D/F ILLUMINATED EXTERIOR MONUMENT SIGN.

A. FAB RAINCAP OUT OF ALUMINUM TUBE AND ALUMINUM SHEET.

B. FAB ACCENT PIECES OUT OF ALUMINUM SHEET ATTACH TO FACES OF RAINCAP.

C. FAB CABINET OUT OF ALUMINUM TUBE AND ALUMINUM SHEET, 2" RETAINERS, .125 ROUTED ALUMINUM FACE (TOP PANEL) BACKED W/ 3/16" WHITE ACRYLIC. LAMP USING FLUORESCENTS. CABINET TO EXTRUDE 2" OFF OF BRICK FASCIA TO TAKE OFF RETAINERS FOR SERVICE.

D) 1-3/4" DIVIDER BARS, BACKED WITH 3/16" WHITE ACRYLIC WITH VINYL APPLIED FIRST SURFACE. (PAINT VINYL TO MATCH COLOR SO LIGHT WON'T SHINE THRU) TENANT NAMES T.B.D.

PAINT AS PER PRINT.

D. BRICK FASCIA DONE BY OTHERS.

E. SILL DONE BY OTHERS.

F. BRICK WORK DONE BY OTHERS.

G) INSTALL AS PER POLE AND BASE SPECIFICATIONS

R1: 09-18-06 • AJG • CHANGED SIZE, COLORS AND NOW HAS A ROUTED FACE
 R2: 10-04-06 • AJG • CHANGED COLORS

FILE NAME 15136-05-2 DATE 8.24.06 SCALE 3/8"=1'
 JOB NAME ANIMART
 LOCATION MADISON, WI
 DRAWN BY EM SALESMAN MICHAEL OLKWITZ

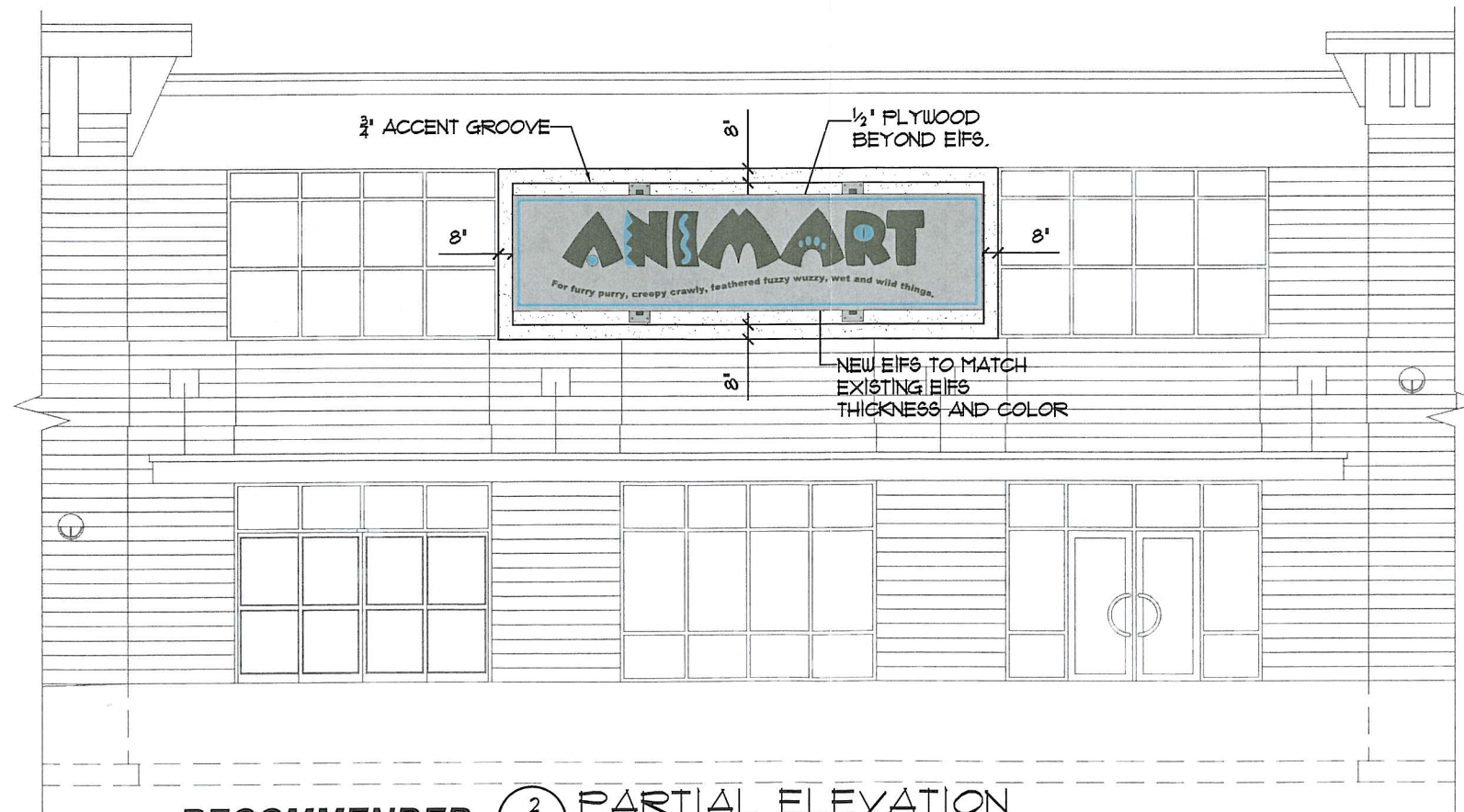
DESIGN APPROVED BY:
 AUTHORIZED SIGNATURE _____
 DATE _____

UNLESS OTHERWISE SPECIFIED: ALL FLUORESCENT LAMPS WILL BE T12-CW-HO LAMPS. ALL BALLASTS WILL BE COLD START ALL-WEATHER BALLASTS. ALL NEON TRANSFORMERS WILL BE 30 MILLIAMPS. 120 PRIMARY POWER TO SIGNS WILL BE BY OTHERS. ALL DATA LINES TO ELECTRONIC SIGNAGE WILL BE BY OTHERS. ALL PAINT COLORS WILL BE SEMI-GLOSS FINISH.

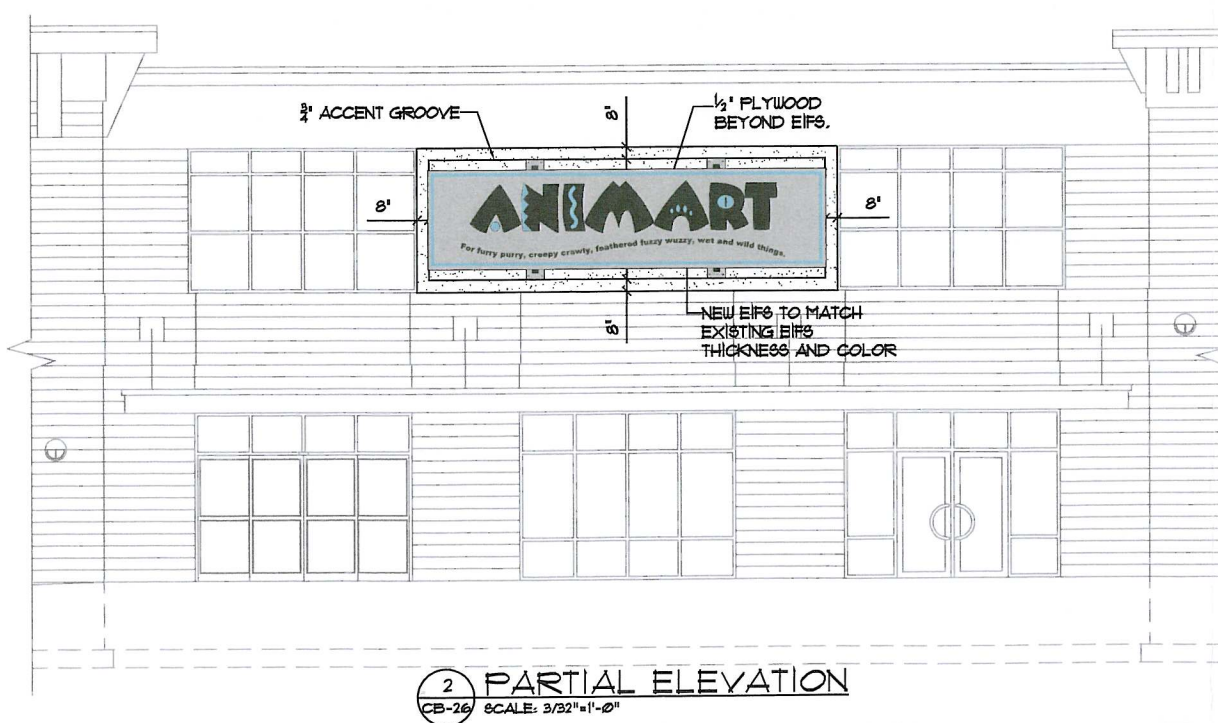
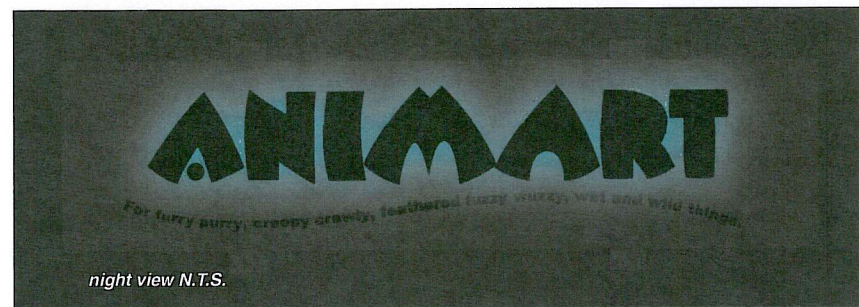
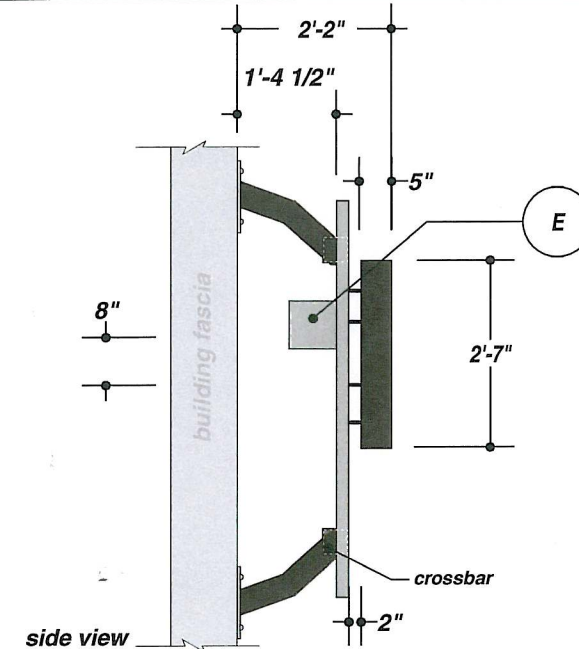
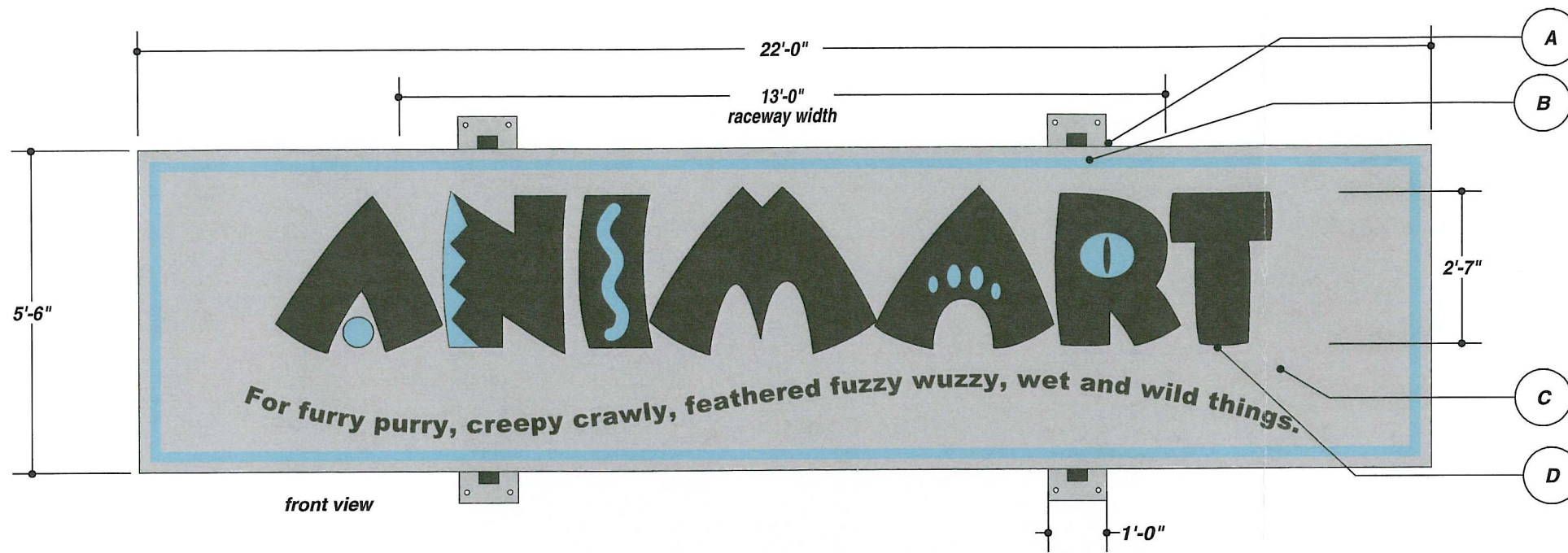
THIS IS AN ORIGINAL COMPUTER GENERATED COLOR PRINT, CREATED FOR YOUR PERSONAL USE IN CONNECTION WITH A PROJECT BEING PLANNED FOR YOU BY SIGN PRODUCTIONS, INC. COLORS REPRESENTED ON THIS PRINT MAY NOT MATCH THE PMS CHIP, VINYL OR PAINT COLORS EXACTLY. IT IS TO BE VIEWED AS A COLOR REPRESENTATION ONLY. THIS PRINT IS NOT TO BE SHOWN TO ANYONE OUTSIDE OF YOUR ORGANIZATION, NOR IS IT TO BE REPRODUCED, COPIED OR EXHIBITED IN ANY FASHION. IF NOT RETURNED WITHIN THIRTY DAYS FROM DATE, WE RESERVE THE RIGHT TO CHARGE FOR THE CREATIVE TIME INVOLVED IN ITS DEVELOPMENT.



ALLOWABLE ① EAST ELEVATION DEMO PLAN
 CB-26 SCALE: 3/32"=1'-0"



RECOMMENDED ② PARTIAL ELEVATION
 CB-26 SCALE: 3/32"=1'-0"



- AKZO NOBEL 331-A3
- AKZO NOBEL METALLIC GREY FLNA9146
- AKZO NOBEL 352-H5

JOB DESCRIPTION
 S/F ILLUMINATED EXTERIOR HALO-LIT CHANNEL LETTERS MOUNTED ON EXTRUDING BACKER PANEL.

A. FAB MOUNTING BRACKETS OUT OF 1/2" STEEL PLATE. HOLES DRILLED IN FOR 1" MOUNTING BOLTS.

B. FAB ARMS OUT OF 4" STEEL TUBE WITH STEEL CROSSBAR CONNECTING TOP TWO AND BOTTOM TWO ARMS. CROSSBARS MOUNTED TO BACKER PANEL TUBE FRAME.

C. FAB BACKER PANEL OUT OF ALUMINUM SHEET AND ALUMINUM TUBE. FILL IN SEAMS ON FACE OF PANEL FOR SMOOTH LOOK. VINYL APPLIED FIRST SURFACE.

D. FAB LETTERS OUT OF ALUMINUM SHEET, LIGHT W/ AQUA MARINE LEDS, STAND-OFF MOUNTED 2" OFF OF BACKER PANEL.

E. FAB RACEWAY OUT OF ALUMINUM SHEET, FLUSH MOUNTED TO BACKER PANEL.

PAINT AS PER PRINT.

SEE SPECS FOR INSTALL.

FIELD MEASUREMENT AND COLOR CONFIRMATION REQUIRED BEFORE PRODUCTION.

R1: 09-15-06 • AJG • CHANGED COLORS AND TO LED
 R2: 10-10-06 • AJG • CHANGED COLORS AND ENLARGED SIZE
 R3: 11-21-06 • AJG • INCREASED OVERALL SIZE

FILE NAME 15136-01-3 DATE 8.24.06 SCALE 3/8"=1'
 JOB NAME ANIMART
 LOCATION MADISON, WI
 DRAWN BY EM SALESMAN MICHAEL OLKWITZ

DESIGN APPROVED BY:
 AUTHORIZED SIGNATURE _____
 DATE _____

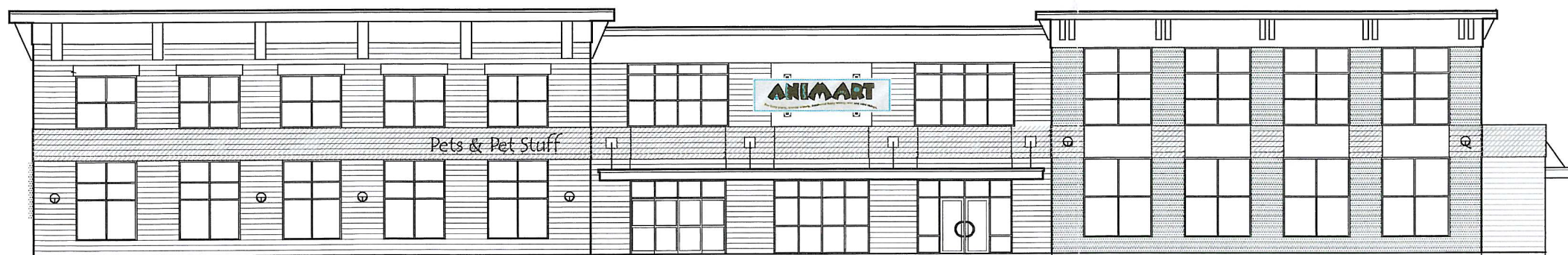
UNLESS OTHERWISE SPECIFIED:
 • ALL FLUORESCENT LAMPS WILL BE T12-CW-HO LAMPS. • ALL BALLASTS WILL BE COLD START ALL-WEATHER BALLASTS. • ALL NEON TRANSFORMERS WILL BE 30 MILLIAMPS. • 120 PRIMARY POWER TO SIGNS WILL BE BY OTHERS. • ALL DATA LINES TO ELECTRONIC SIGNAGE WILL BE BY OTHERS. • ALL PAINT COLORS WILL BE SEMI-GLOSS FINISH.

THIS IS AN ORIGINAL COMPUTER GENERATED COLOR PRINT, CREATED FOR YOUR PERSONAL USE IN CONNECTION WITH A PROJECT BEING PLANNED FOR YOU BY SIGN PRODUCTIONS, INC. COLORS REPRESENTED ON THIS PRINT MAY NOT MATCH THE PMS CHIP, VINYL OR PAINT COLORS EXACTLY. IT IS TO BE VIEWED AS A COLOR REPRESENTATION ONLY. THIS PRINT IS NOT TO BE SHOWN TO ANYONE OUTSIDE OF YOUR ORGANIZATION, NOR IS IT TO BE REPRODUCED, COPIED OR EXHIBITED IN ANY FASHION. IF NOT RETURNED WITHIN THIRTY DAYS FROM DATE, WE RESERVE THE RIGHT TO CHARGE FOR THE CREATIVE TIME INVOLVED IN ITS DEVELOPMENT.



1'-6" 14'-2"

Pets & Pet Stuff



JOB DESCRIPTION
S/F NON-ILLUMINATED EXTERIOR FLAT CUT LETTERS.

1/4" PAINTED ROUTED ALUMINUM FLAT CUT LETTERS. STUD MOUNT 1/2" OFF OF BUILDING FASCIA.

FIELD MEASUREMENT REQUIRED BEFORE PRODUCTION.

- R1: 09-15-06 • AJG • CHANGED COLOR AND TO FLAT CUT ALUMINUM.
- R2: 10-10-06 • AJG • CHANGED FONT
- R3: 11-14-06 • AJG • CHANGED TEXT

FILE NAME 15136-02-3 DATE 8.24.06 SCALE 3/4"=1'
 JOB NAME ANIMART
 LOCATION MADISON, WI
 DRAWN BY EM SALESMAN MICHAEL OLKWITZ

DESIGN APPROVED BY:
 AUTHORIZED SIGNATURE _____
 DATE _____

AKZO NOBEL 352-H5

UNLESS OTHERWISE SPECIFIED:
 • ALL FLUORESCENT LAMPS WILL BE T12-CW-HO LAMPS. • ALL BALLASTS WILL BE COLD START ALL-WEATHER BALLASTS. • ALL NEON TRANSFORMERS WILL BE 30 MILLIAMPS. • 120 PRIMARY POWER TO SIGNS WILL BE BY OTHERS. • ALL DATA LINES TO ELECTRONIC SIGNAGE WILL BE BY OTHERS. • ALL PAINT COLORS WILL BE SEMI-GLOSS FINISH.

THIS IS AN ORIGINAL COMPUTER GENERATED COLOR PRINT, CREATED FOR YOUR PERSONAL USE IN CONNECTION WITH A PROJECT BEING PLANNED FOR YOU BY SIGN PRODUCTIONS, INC. COLORS REPRESENTED ON THIS PRINT MAY NOT MATCH THE PMS CHIP, VINYL OR PAINT COLORS EXACTLY. IT IS TO BE VIEWED AS A COLOR REPRESENTATION ONLY. THIS PRINT IS NOT TO BE SHOWN TO ANYONE OUTSIDE OF YOUR ORGANIZATION, NOR IS IT TO BE REPRODUCED, COPIED OR EXHIBITED IN ANY FASHION. IF NOT RETURNED WITHIN THIRTY DAYS FROM DATE, WE RESERVE THE RIGHT TO CHARGE FOR THE CREATIVE TIME INVOLVED IN ITS DEVELOPMENT.





634 West Main Street
Madison, WI 53703
608-257-1090
FAX 608-257-1092



COPYRIGHTED DRAWING
THIS DOCUMENT OR THE INFORMATION HEREIN IS NOT TO BE REPRODUCED, DISTRIBUTED, LOANED OR DISCLOSED EITHER IN WHOLE OR PART UNLESS AUTHORIZED BY TJK DESIGN BUILD.

PROPOSED FACILITY FOR:
LEIN CROSSING
4303 EAST TOWN WAY
MADISON, WISCONSIN

C-1.4
05.04.06

Plant Material List

Quantity	Code Name	Scientific Name	Planting Size
Broadleaf Deciduous			
9	APA	Autumn Purple White Ash	2" B&B
5	CCP	Chanticleer Callery Pear	2" B&B
5	NRM	Northwood Red Maple	2" B&B
4	PFC	Prairiefire Crabapple	1 1/2" B&B
1	RJC	Red Jewel Crabapple	1 1/2" B&B
3	SHL	Skyline Thins Honeylocust	2" B&B
Conifer Evergreen			
Quantity	Code Name	Scientific Name	Planting Size
9	BHS	Black Hills Spruce	4' B&B
20	BJ	Buffalo Juniper	#2 CONT.
9	CF	Canaan Fir	7' TS
4	CL	Common Larch	5' B&B
7	MBJ	Mountbatten Juniper	4' B&B
24	TA	Technymission Arborvitae	4' B&B
3	FAS	FAT ALBERT SPRUCE	4' B&B
Perennial			
Quantity	Code Name	Scientific Name	Planting Size
4	AJS	Autumn Joy Sedum (red 24")	#1 CONT.
9	BES	Black-eyed Susan	#1 CONT.
2	LBS	Little Bluestem	#1 CONT.
1	PPCB	Palace Purple Coral Bells	#1 CONT.
5	PD	Prairie Dropseed	#2 CONT.
3	SDD	Stella De Oro Daylily (gold 18" Re)	#1 CONT.
Shrub			
Quantity	Code Name	Scientific Name	Planting Size
10	AWS	Anthony Waterer Spirea	#2 CONT.
33	BMAV	Blue Muffin Arwd Viburnum	#5 CONT.
6	BCB	Brilliant Red Chokeberry	#2 CONT.
6	CWR	Carefree Wonder Rose	#3 CONT.
6	GMS	Gold Mound Spirea	#2 CONT.
6	GFS	Goldflame Spirea	#2 CONT.
1	MAF	Mt Airy Fothergilla	#2 CONT.
12	ODV	Onondaga Sargent Viburnum	#5 CONT.
10	PL	Palibin Lilac	#3 CONT.
12	TSF	Texas Scarlet Floweringquince	#3 CONT.
2	TWE	Tures Winged Euonymus	#3 CONT.

BIORETENTION AREA PLANT LIST
BIO-RETENTION AREA (1400 SF)
PLANTS (PLUGS) SPACE 12" O.C.

GRASSES	
168 BOTTLEBRUSH SEDGE	CAREX HYSTERICINA
196 FOX SEDGE	CAREX VULPINOIDEA
196 DARK-GREEN BURLUSH	SCIRPUS ATROVIRENS
FORBS	
60 PRAIRIE BLAZINGSTAR	LIATRIS Pycnostachya
60 NEW ENGLAND ASTER	ASTER ERICOIDES
60 WHITE WILD INDIGO	BAPTISTA ALBA
60 SPOTTED JOE PYE WEED	EUPATORIUM MACULATUM
60 PURPLE CONEFLOWER	ECHINACEA PURPUREUM
60 SNEEZEWEED	HELENIUM AUTUMNALE
60 CARDINAL FLOWER	LOBELIA CARDINALIS
60 SMOOTH PENSTEMON	PENSTEMON DIGITALIS
60 YELLOW CONEFLOWER	RATIBIDA PINNATA
60 SWEET BLACK-EYED SUSAN	RUDBECKIA SUBTOMENTOSA
60 GRASS LEAVED GOLDENROD	SOLIDAGO GRAMINIFOLIA
60 FLAT-TOP ASTER	ASTER UMBELLATUS
60 STIFF GOLDENROD	SOLIDAGO RIGIDA
60 GOLDEN ALEXANDER	ZIZIA AUREA

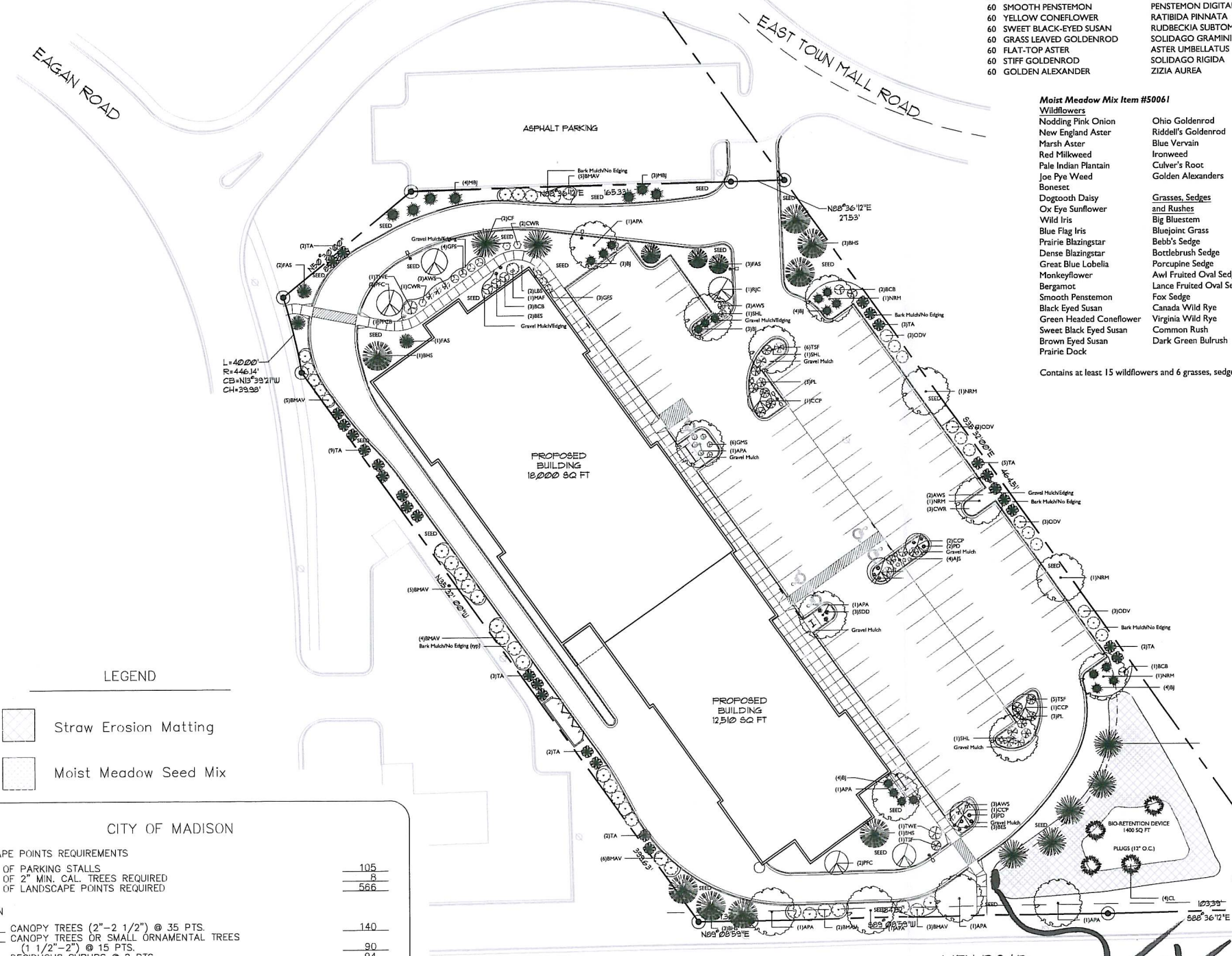
Moist Meadow Mix Item #50061

Wildflowers	Ohio Goldenrod
Nodding Pink Onion	Riddell's Goldenrod
New England Aster	Blue Vervain
Marsh Aster	Ironweed
Red Milkweed	Culver's Root
Pale Indian Plantain	Golden Alexanders
Joe Pye Weed	
Bowleset	
Dogtooth Daisy	Grasses, Sedges and Rushes
Ox Eye Sunflower	Grasses, Sedges and Rushes
Wild Iris	Big Bluestem
Blue Flag Iris	Bluejoint Grass
Prairie Blazingstar	Bebb's Sedge
Dense Blazingstar	Bottlebrush Sedge
Great Blue Lobelia	Porcupine Sedge
Monkeyflower	Awl Fruited Oval Sedge
Bergamot	Lance Fruited Oval Sedge
Smooth Penstemon	Fox Sedge
Black Eyed Susan	Canada Wild Rye
Green Headed Coneflower	Virginia Wild Rye
Sweet Black Eyed Susan	Common Rush
Brown Eyed Susan	Dark Green Bulrush
Prairie Dock	

Contains at least 15 wildflowers and 6 grasses, sedges and rushes.

GENERAL NOTES

- Areas labeled "Bark Mulch" to receive a mixture of hardwood shredded bark mulch spread to a 3" depth over pre-emergent.
- Individual trees (and shrub groupings) found along perimeter of property as well as those found within lawn areas to receive bark rings (and bark beds) consisting of a mixture of hardwood shredded bark mulch spread to a minimum 3" depth (3' wide beds for shrub groupings).
- "Edging" to be Valley View Black Diamond Edging or equivalent.
- Areas labeled "Gravel Mulch" to receive 1-1/2" washed gravel spread to a 3" depth over fabric weed barrier.
- Seed shall consist of the following mixture:
40% Palmer Ryegrass
20% Baron Ryegrass
20% Nassau Bluegrass
20% Pennlawn Creeping Red Fescue
- Plant beds adjacent to building foundation to be mulched with 1-1/2" diameter washed gravel mulch spread to a 3"-4" depth over fabric weed barrier.
- Areas to receive erosion mat shall be seeded with the noted seed mixture and overlaid with erosion control netting that is then pegged into the soil with wooden stakes.
- Moist Meadow seed mix by Prairie Nursery. Install per manufacturer's instructions overlaid with erosion control netting that is then pegged into the soil with wooden stakes.



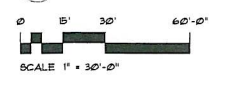
LEGEND

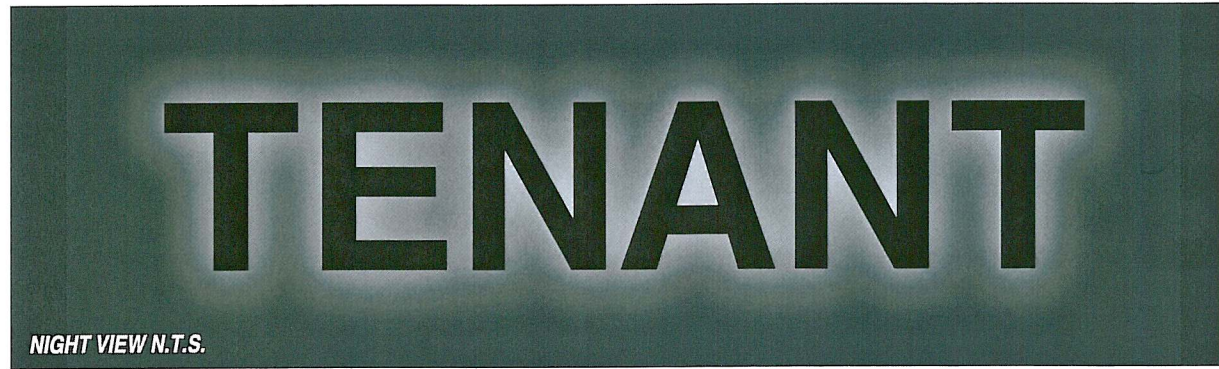
[Hatched Box]	Straw Erosion Matting
[Dotted Box]	Moist Meadow Seed Mix

CITY OF MADISON

LANDSCAPE POINTS REQUIREMENTS	
NUMBER OF PARKING STALLS	105
NUMBER OF 2" MIN. CAL. TREES REQUIRED	25
NUMBER OF LANDSCAPE POINTS REQUIRED	566
SOLUTION	
4 CANOPY TREES (2"-2 1/2") @ 35 PTS.	140
6 CANOPY TREES OR SMALL ORNAMENTAL TREES (1 1/2"-2") @ 15 PTS.	90
47 DECIDUOUS SHRUBS @ 2 PTS.	94
16 EVERGREEN SHRUBS @ 3 PTS.	48
22 EVERGREEN TREES (3' HT.) @ 15 PTS.	15
DECORATIVE WALL OR FENCE @ 5 PTS. (PER 10 L.F.)	-
EARTH BERM (PER 10 L.F.)	-
AVERAGE HEIGHT - 30" @ 5 PTS.	-
AVERAGE HEIGHT - 15" @ 2 PTS.	-
TOTAL POINTS	702

PROPOSED LANDSCAPE PLAN





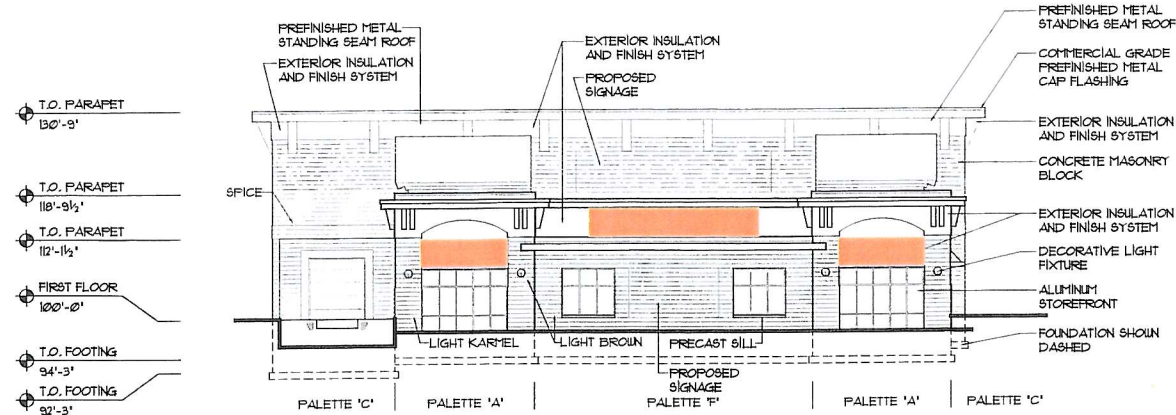
AKZO NOBEL METALLIC GREY FLNA9146

JOB DESCRIPTION

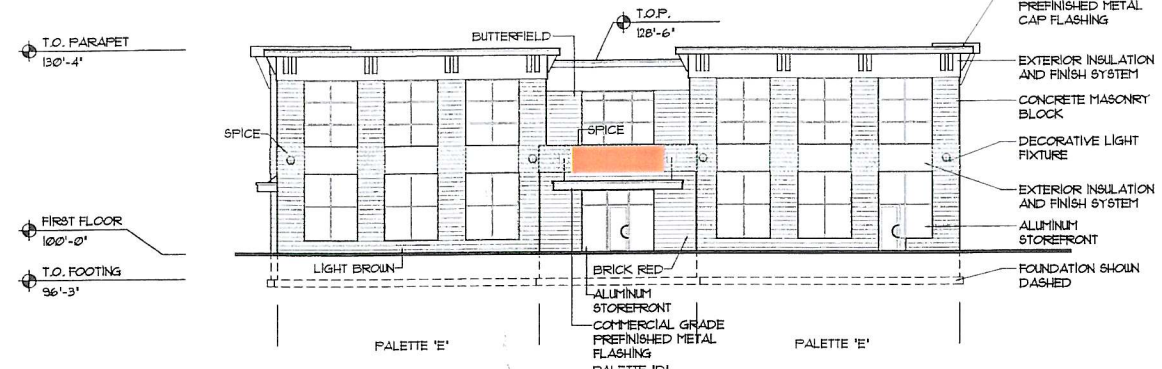
S/F ILLUMINATED EXTERIOR CABINET MOUNTED TO BUILDING FASCIA

FABRICATE CABINET FROM ABC SMALL A. .125 ROUTED ALUMINUM FACE BACKED W. .150 WHITE MODIFIED ACRYLIC. STUD MOUNT 1/4" FLAT CUT PAINTED LETTERS 1" OFF OF ACRYLIC. APPLY FIRST SURFACE VINYL (CUT LETTERS 1/8" SMALLER THAN ROUTED OUT AREA) PAINT BACK OF LETTERS WHITE. LAMP USING FLUORESCENTS.

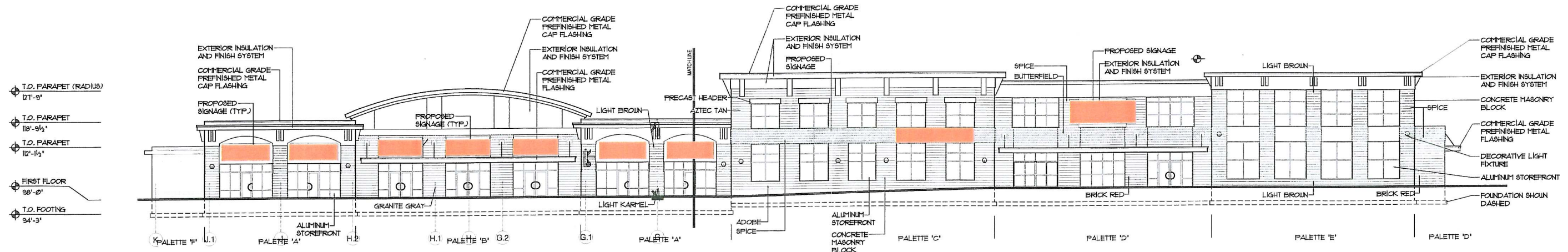
EXHIBIT B1



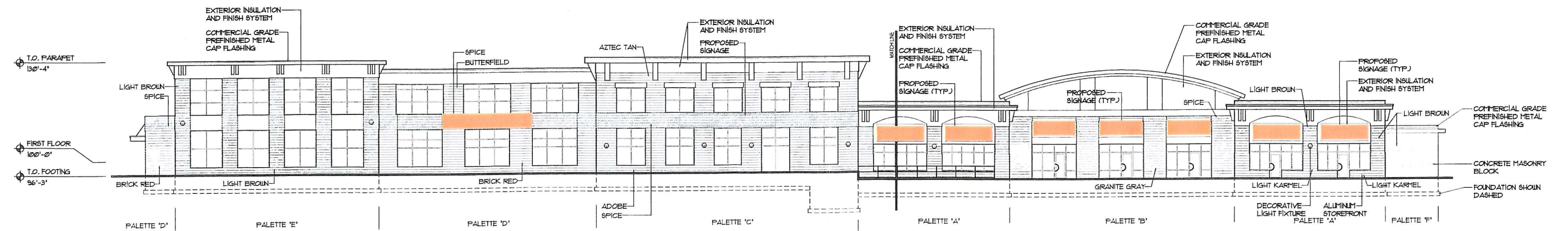
2 PROPOSED SOUTH ELEVATION
A-2.1 SCALE: 1/16"=1'-0"



1 PROPOSED NORTH ELEVATION
A-2.1 SCALE: 1/16"=1'-0"



3 PROPOSED EAST ELEVATION
A-2.1

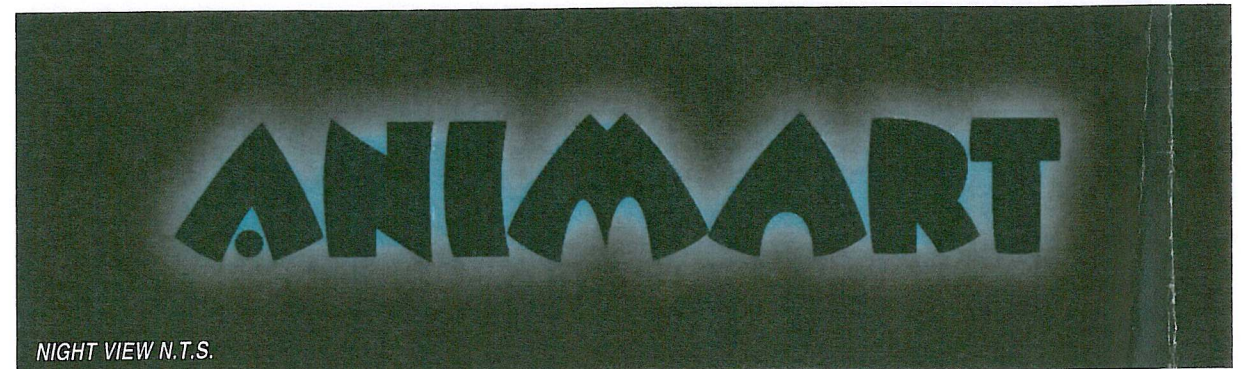
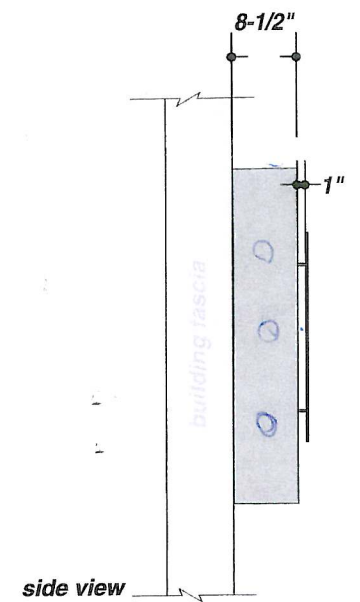
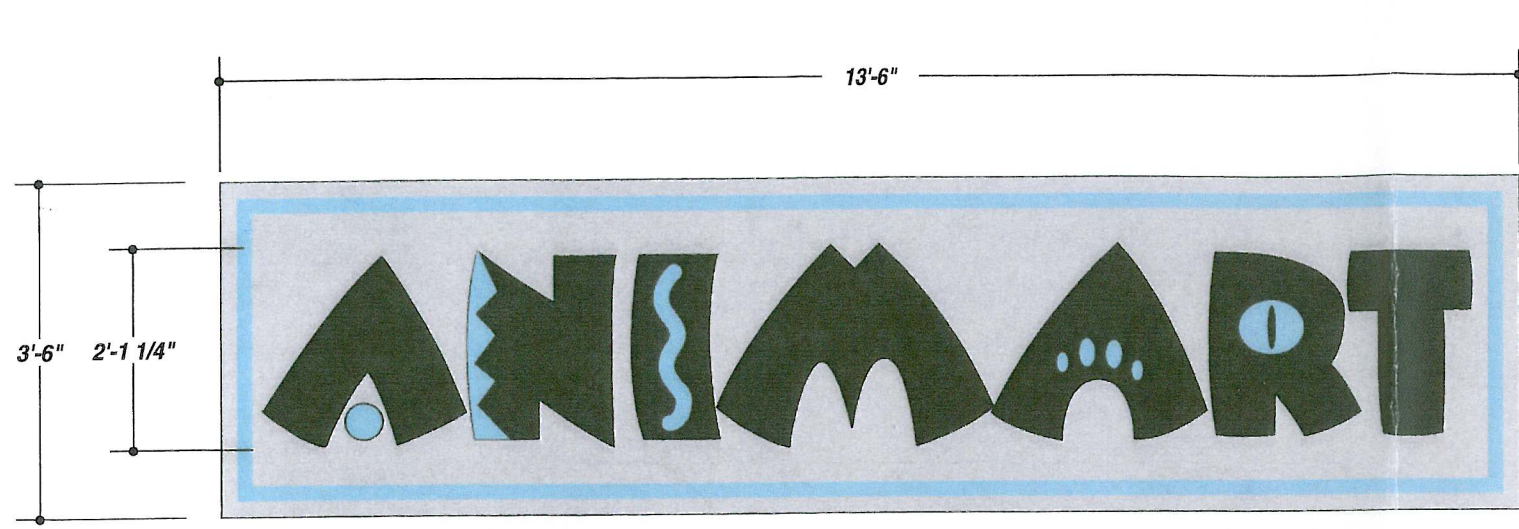


PROPOSED WEST ELEVATION
A-2.1

 = SIGNABLE AREA

EXHIBIT B2

IF THIS PRINTS ONTO ARTWORK PAPER THE FILE HAS BEEN SIZED TO FIT PAPER AND WILL NOT BE TO SCALE - DIMENSIONS FIT TO FACE BOX IN ACRADAT TO PRINT A SCALE PRINT



- 3630-236 TURQUOISE
- AKZO NOBEL 331-A3
- AKZO NOBEL METALLIC GREY FLNA9146
- AKZO NOBEL 352-H5

JOB DESCRIPTION

S/F ILLUMINATED EXTERIOR CABINET MOUNTED TO BUILDING FASCIA

FABRICATE CABINET FROM ABC SMALL A. .125 ROUNDED ALUMINUM FACE BACKED W/ .150 WHITE MODIFIED ACRYLIC. APPLY FIRST SURFACE VINYL TO ACRYLIC. STUD MOUNT 1/4" FLAT CUT PAINTED LETTERS 1" OFF OF ACRYLIC. APPLY FIRST SURFACE VINYL (CUT LETTERS 1/8" SMALLER THAN ROUTED OUT AREA) PAINT BACK OF LETTERS WHITE. LAMP USING FLUORESCENTS.

R1: 10-10-06 • AJG • CHANGED TO CABINET

FILE NAME 15136-07-1 DATE 8.24.06 SCALE 1/2"=1'

JOB NAME ANIMART

LOCATION MADISON, WI

DRAWN BY EM SALESMAN MICHAEL OLKWITZ

DESIGN APPROVED BY:

AUTHORIZED SIGNATURE

UNLESS OTHERWISE SPECIFIED: ALL FLUORESCENT LAMPS WILL BE T12-CW-HO LAMPS. ALL BALLASTS WILL BE COLD START ALL-WEATHER BALLASTS. ALL NEON TRANSFORMERS WILL BE 30 MILLIAMPS. 120 PRIMARY POWER TO SIGNS WILL BE BY OTHERS. ALL DATA LINES TO ELECTRONIC SIGNAGE WILL BE BY OTHERS. ALL PAINT COLORS WILL BE SEMI-GLOSS FINISH.

THIS IS AN ORIGINAL COMPUTER GENERATED COLOR PRINT, CREATED FOR YOUR PERSONAL USE IN CONNECTION WITH A PROJECT BEING PLANNED FOR YOU BY SIGN PRODUCTIONS, INC. COLORS REPRESENTED ON THIS PRINT MAY NOT MATCH THE PMS CHIP, VINYL OR PAINT COLORS EXACTLY. IT IS TO BE VIEWED AS A COLOR REPRESENTATION ONLY. THIS PRINT IS NOT TO BE SHOWN TO ANYONE OUTSIDE OF YOUR ORGANIZATION, NOR IS IT TO BE REPRODUCED, COPIED OR EXHIBITED IN ANY FASHION. IF NOT RETURNED WITHIN THIRTY DAYS FROM DATE, WE RESERVE THE RIGHT TO CHARGE FOR THE CREATIVE TIME INVOLVED IN ITS DEVELOPMENT.

