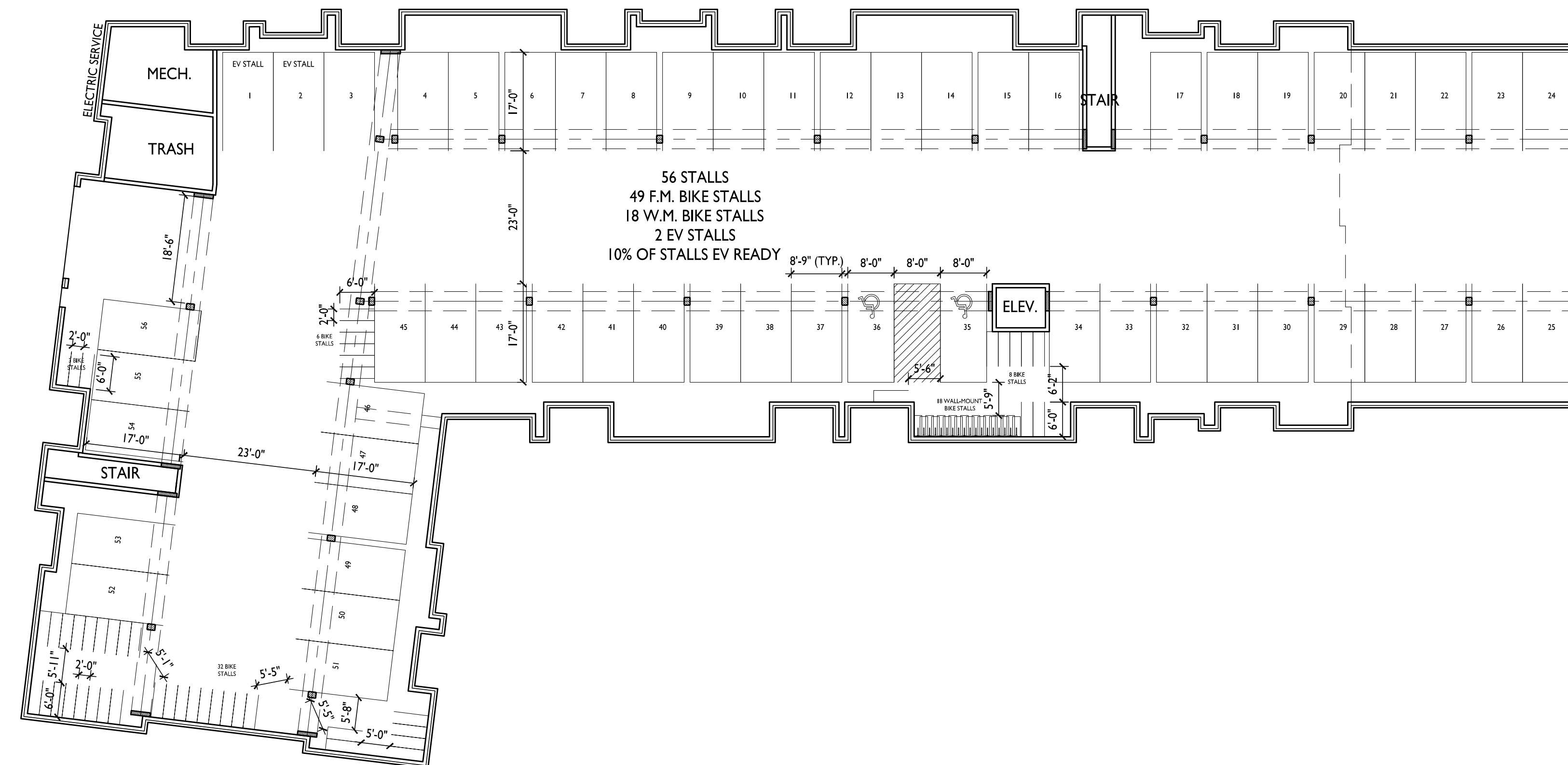




**knothe • bruce**  
ARCHITECTS

Phone: 7601 University Ave., Ste 201  
608.836.3690 Middleton, WI 53562



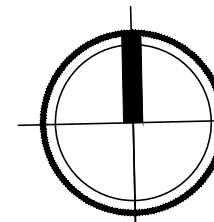
ISSUED  
Issued for LUA & UDC Submittals - February 27, 2023

PROJECT TITLE  
**CASCADE -  
THE AMERICAN  
CENTER EASTPARK  
FIFTH ADDITION**

4846 Eastpark Blvd.  
Madison, WI  
SHEET TITLE  
**Basement Plan**

**Lot 49**  
SHEET NUMBER

**1**  
A-1.0  
**BASEMENT PLAN**  
1/16" = 1'-0"



**A-1.0**

PROJECT NO. **2155**  
© Knothe & Bruce Architects, LLC



**knothe • bruce**  
ARCHITECTS

Phone: 7601 University Ave., Ste 201  
608.836.3690 Middleton, WI 53562



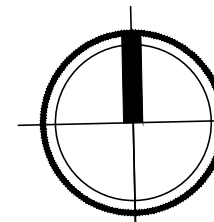
ISSUED  
Issued for LUA & UDC Submittals - February 27, 2023

PROJECT TITLE  
**CASCADE -  
THE AMERICAN  
CENTER EASTPARK  
FIFTH ADDITION**

4846 Eastpark Blvd.  
Madison, WI  
SHEET TITLE  
**First Floor Plan**

**Lot 49**  
SHEET NUMBER

**FIRST FLOOR PLAN**  
1/16" = 1'-0"



**A-1.1**

PROJECT NO. **2155**  
© Knothe & Bruce Architects, LLC



**knothe • bruce**  
ARCHITECTS

Phone: 7601 University Ave., Ste 201  
608.836.3690 Middleton, WI 53562



ISSUED  
Issued for LUA & UDC Submittals - February 27, 2023

PROJECT TITLE  
**CASCADE -  
THE AMERICAN  
CENTER EASTPARK  
FIFTH ADDITION**

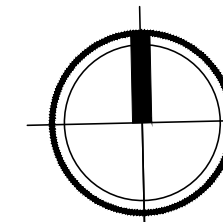
4846 Eastpark Blvd.  
Madison, WI  
SHEET TITLE  
**Second Floor Plan**

**Lot 49**  
SHEET NUMBER

**A-1.2**

PROJECT NO. **2155**  
© Knothe & Bruce Architects, LLC

**1**  
A-1.2  
**SECOND FLOOR PLAN**  
1/16" = 1'-0"





**knothe • bruce**  
ARCHITECTS

Phone: 7601 University Ave., Ste 201  
608.836.3690 Middleton, WI 53562



ISSUED  
Issued for LUA & UDC Submittals - February 27, 2023

PROJECT TITLE  
**CASCADE -  
THE AMERICAN  
CENTER EASTPARK  
FIFTH ADDITION**

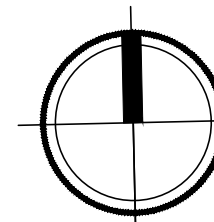
4846 Eastpark Blvd.  
Madison, WI  
SHEET TITLE  
**Third Floor Plan**

**Lot 49**  
SHEET NUMBER

**A-1.3**

PROJECT NO. **2155**  
© Knothe & Bruce Architects, LLC

**THIRD FLOOR PLAN**  
1/16" = 1'-0"





**knothe • bruce**  
ARCHITECTS

Phone: 7601 University Ave., Ste 201  
608.836.3690 Middleton, WI 53562



ISSUED  
Issued for LUA & UDC Submittals - February 27, 2023

PROJECT TITLE  
**CASCADE -  
THE AMERICAN  
CENTER EASTPARK  
FIFTH ADDITION**

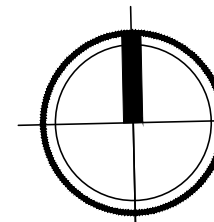
4846 Eastpark Blvd.  
Madison, WI  
SHEET TITLE  
**Fourth Floor Plan**

**Lot 49**  
SHEET NUMBER

**A-1.4**

PROJECT NO. **2155**  
© Knothe & Bruce Architects, LLC

**1**  
A-1.4  
**FOURTH FLOOR PLAN**  
1/16" = 1'-0"

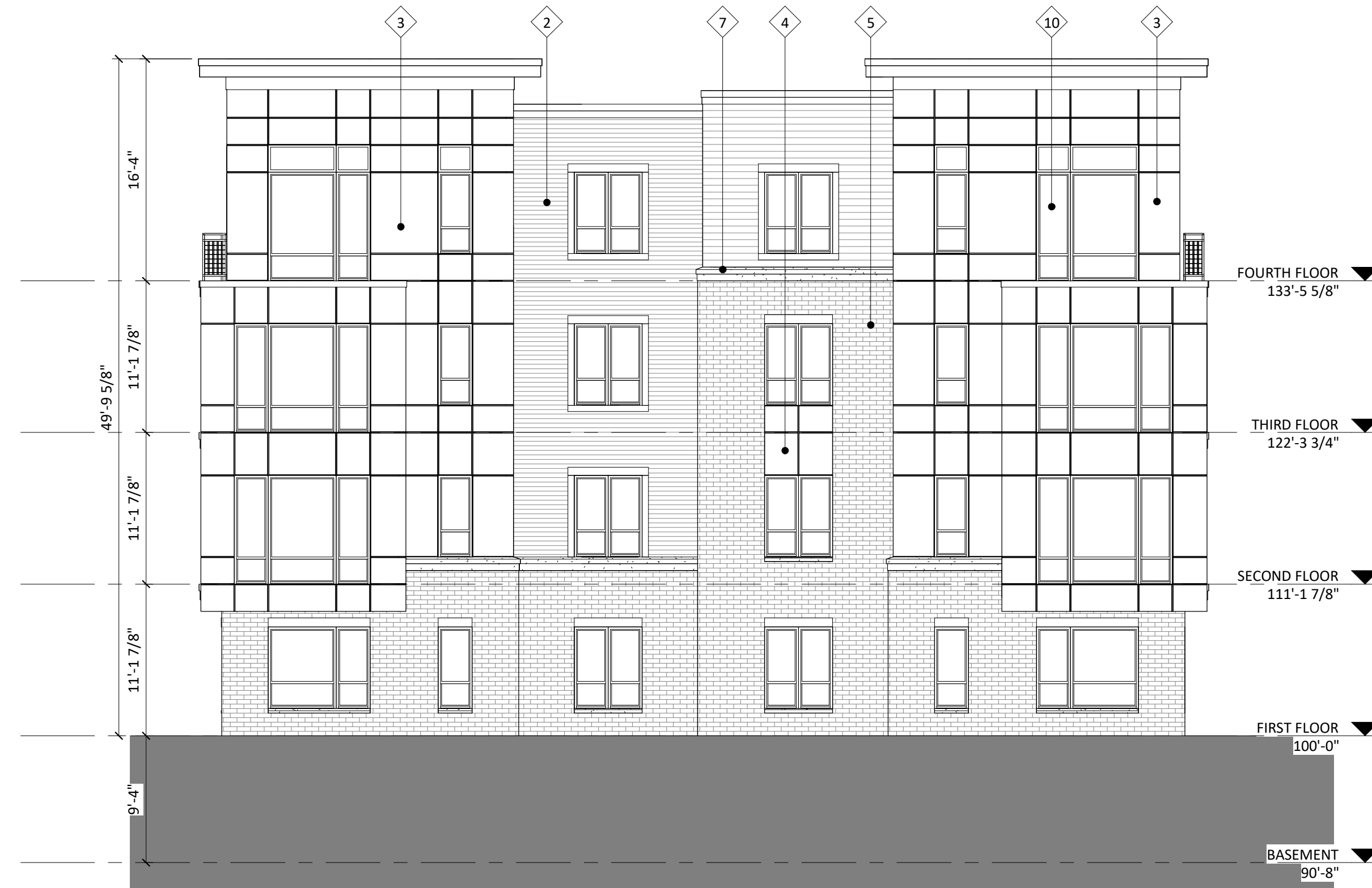




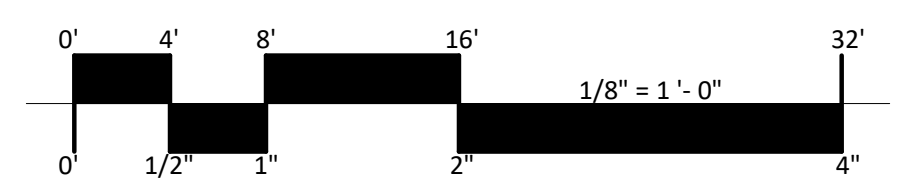
1 ELEVATION - NORTH  
 A-2.1 1/8" = 1'-0"



3 ELEVATION - SOUTHWEST  
 A-2.1 1/8" = 1'-0"



2 ELEVATION - EAST  
 A-2.1 1/8" = 1'-0"



EXTERIOR MATERIAL SCHEDULE			
MARK	BUILDING ELEMENT	MANUFACTURER	COLOR
1	COMPOSITE LAP 6"	JAMES HARDIE	RICH ESPRESSO
2	COMPOSITE LAP 4"	JAMES HARDIE	AGED PEWTER
3	COMPOSITE PANEL	JAMES HARDIE	BLUE
4	COMPOSITE PANEL	JAMES HARDIE	SILVER
5	BRICK VENEER	CLOUD CERAMICS	WINTER BLEND
7	CAST STONE	ROCKCAST	CRYSTAL WHITE
10	COMPOSITE WINDOWS	ANDERSEN 100	BLACK
11	ALUMINIUM STOREFRONT	N/A	BLACK
12	RAILINGS & HANDRAILS	SUPERIOR	BLACK

ISSUED

PROJECT TITLE  
 Cascade - The  
 American Center  
 LOT 49

East Park Blvd.  
 Madison, WI

SHEET TITLE  
 EXTERIOR  
 ELEVATIONS  
 LOT 49

SHEET NUMBER

**A-2.1**  
 PROJECT NUMBER 2155

NOT FOR CONSTRUCTION



1 ELEVATION - SOUTH  
A-2.2 1/8" = 1'-0"



3 ELEVATION - WEST  
A-2.2 1/8" = 1'-0"



2 ELEVATION - SOUTHEAST  
A-2.2 1/8" = 1'-0"

ISSUED

PROJECT TITLE  
**Cascade - The American Center LOT 49**

East Park Blvd.  
Madison, WI  
SHEET TITLE

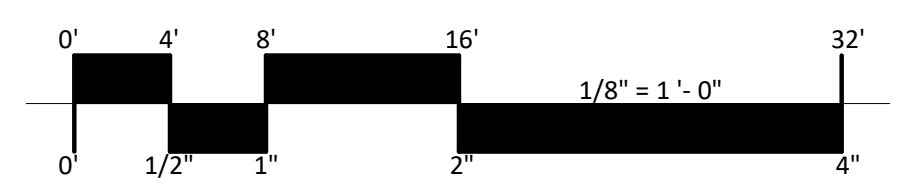
**EXTERIOR ELEVATIONS LOT 49**

SHEET NUMBER

**A-2.2**  
PROJECT NUMBER 2155

© Knothe & Bruce Architects, LLC

EXTERIOR MATERIAL SCHEDULE			
MARK	BUILDING ELEMENT	MANUFACTURER	COLOR
1	COMPOSITE LAP 6"	JAMES HARDIE	RICH ESPRESSO
2	COMPOSITE LAP 4"	JAMES HARDIE	AGED PEWTER
3	COMPOSITE PANEL	JAMES HARDIE	BLUE
4	COMPOSITE PANEL	JAMES HARDIE	SILVER
5	BRICK VENEER	CLOUD CERAMICS	WINTER BLEND
7	CAST STONE	ROCKCAST	CRYSTAL WHITE
10	COMPOSITE WINDOWS	ANDERSEN 100	BLACK
11	ALUMINIUM STOREFRONT	N/A	BLACK
12	RAILINGS & HANDRAILS	SUPERIOR	BLACK



**NOT FOR CONSTRUCTION**



1 COLORED ELEVATION - NORTH  
 A-2.3 1/8" = 1'-0"



3 COLORED ELEVATION - SOUTHWEST  
 A-2.3 1/8" = 1'-0"



2 COLORED ELEVATION - EAST  
 A-2.3 1/8" = 1'-0"

ISSUED

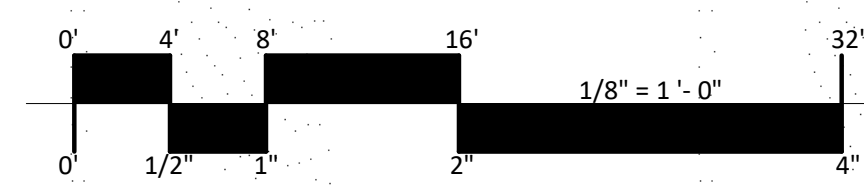
PROJECT TITLE  
 Cascade - The  
 American Center  
 LOT 49

East Park Blvd.  
 Madison, WI  
 SHEET TITLE

EXTERIOR  
 ELEVATIONS  
 COLORED  
 LOT 49  
 SHEET NUMBER

**A-2.3**  
 PROJECT NUMBER 2155

EXTERIOR MATERIAL SCHEDULE			
MARK	BUILDING ELEMENT	MANUFACTURER	COLOR
1	COMPOSITE LAP 6"	JAMES HARDIE	RICH ESPRESSO
2	COMPOSITE LAP 4"	JAMES HARDIE	AGED PEWTER
3	COMPOSITE PANEL	JAMES HARDIE	BLUE
4	COMPOSITE PANEL	JAMES HARDIE	SILVER
5	BRICK VENEER	CLOUD CERAMICS	WINTER BLEND
7	CAST STONE	ROCKCAST	CRYSTAL WHITE
10	COMPOSITE WINDOWS	ANDERSEN 100	BLACK
11	ALUMINIUM STOREFRONT	N/A	BLACK
12	RAILINGS & HANDRAILS	SUPERIOR	BLACK



NOT FOR CONSTRUCTION





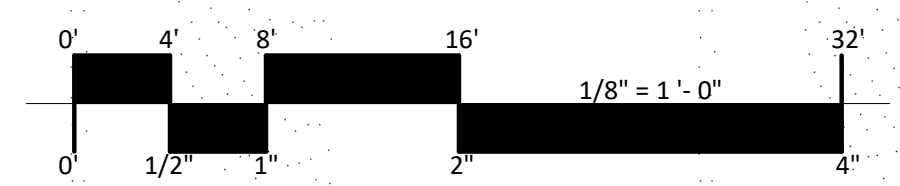
1 COLORED ELEVATION - SOUTH  
 A-2.4 1/8" = 1'-0"



3 COLORED ELEVATION - WEST  
 A-2.4 1/8" = 1'-0"



2 COLORED ELEVATION - SOUTHEAST  
 A-2.4 1/8" = 1'-0"



EXTERIOR MATERIAL SCHEDULE			
MARK	BUILDING ELEMENT	MANUFACTURER	COLOR
1	COMPOSITE LAP 6"	JAMES HARDIE	RICH ESPRESSO
2	COMPOSITE LAP 4"	JAMES HARDIE	AGED PEWTER
3	COMPOSITE PANEL	JAMES HARDIE	BLUE
4	COMPOSITE PANEL	JAMES HARDIE	SILVER
5	BRICK VENEER	CLOUD CERAMICS	WINTER BLEND
7	CAST STONE	ROCKCAST	CRYSTAL WHITE
10	COMPOSITE WINDOWS	ANDERSEN 100	BLACK
11	ALUMINIUM STOREFRONT	N/A	BLACK
12	RAILINGS & HANDRAILS	SUPERIOR	BLACK

ISSUED

PROJECT TITLE  
 Cascade - The  
 American Center  
 LOT 49

East Park Blvd.  
 Madison, WI  
 SHEET TITLE

EXTERIOR  
 ELEVATIONS  
 COLORED  
 LOT 49  
 SHEET NUMBER

**A-2.4**  
 PROJECT NUMBER 2155

NOT FOR CONSTRUCTION





**knothe + bruce**  
ARCHITECTS

Phone: 7601 University Ave., Ste 201  
608.836.3690 Middleton, WI 53562

ISSUED  
Issued for LUA & UDC Submittals - February 27, 2023

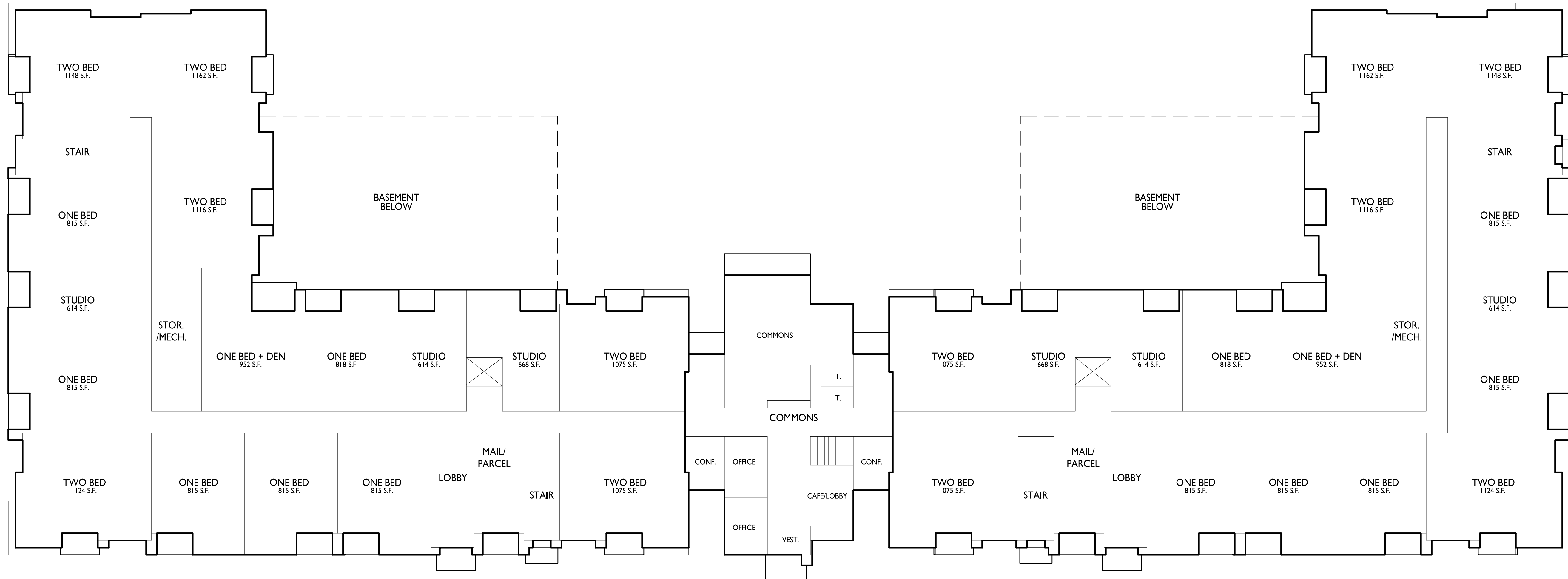
PROJECT TITLE  
**CASCADE -  
THE AMERICAN  
CENTER EASTPARK  
FIFTH ADDITION**

4846 Eastpark Blvd.  
Madison, WI  
SHEET TITLE  
**First Floor Plan**

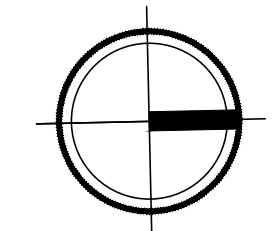
**Lot 50**  
SHEET NUMBER

**A-1.1**

PROJECT NO. **2155**  
© Knothe & Bruce Architects, LLC



**FIRST FLOOR PLAN**  
1/16" = 1'-0"





**knothe • bruce**  
ARCHITECTS

Phone: 7601 University Ave., Ste 201  
608.836.3690 Middleton, WI 53562

ISSUED  
Issued for LUA & UDC Submittals - February 27, 2023

PROJECT TITLE  
**CASCADE -  
THE AMERICAN  
CENTER EASTPARK  
FIFTH ADDITION**

4846 Eastpark Blvd.  
Madison, WI  
SHEET TITLE  
**Second Floor Plan**

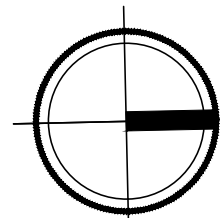
**Lot 50**  
SHEET NUMBER

**A-1.2**

PROJECT NO. **2155**  
© Knothe & Bruce Architects, LLC



**1** SECOND FLOOR PLAN  
A-1.2 1/16" = 1'-0"





**knothe • bruce**  
ARCHITECTS

Phone: 7601 University Ave., Ste 201  
608.836.3690 Middleton, WI 53562

ISSUED  
Issued for LUA & UDC Submittals - February 27, 2023

PROJECT TITLE  
**CASCADE -  
THE AMERICAN  
CENTER EASTPARK  
FIFTH ADDITION**

4846 Eastpark Blvd.  
Madison, WI  
SHEET TITLE  
**Third Floor Plan**

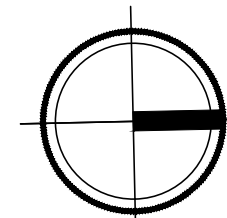
**Lot 50**  
SHEET NUMBER

**A-1.3**

PROJECT NO. **2155**  
© Knothe & Bruce Architects, LLC



**1**  
A-1.3  
**THIRD FLOOR PLAN**  
1/16" = 1'-0"





**knothe • bruce**  
ARCHITECTS

Phone: 7601 University Ave., Ste 201  
608.836.3690 Middleton, WI 53562

ISSUED  
Issued for LUA & UDC Submittals - February 27, 2023

PROJECT TITLE  
**CASCADE -  
THE AMERICAN  
CENTER EASTPARK  
FIFTH ADDITION**

4846 Eastpark Blvd.  
Madison, WI  
SHEET TITLE  
**Fourth Floor Plan**

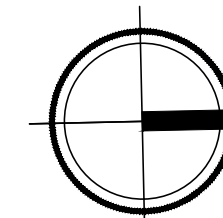
**Lot 50**  
SHEET NUMBER

**A-1.4**

PROJECT NO. **2155**  
© Knothe & Bruce Architects, LLC



**1**  
A-1.4  
**FOURTH FLOOR PLAN**  
1/16" = 1'-0"





1 ELEVATION - EAST 1  
A-2.1 1/8" = 1'-0"

ISSUED



2 ELEVATION - EAST 2  
A-2.1 1/8" = 1'-0"

PROJECT TITLE  
**Cascade - The American Center LOT 50**

East Park Blvd.  
Madison, WI

SHEET TITLE  
**EXTERIOR ELEVATIONS LOT 50**

SHEET NUMBER

**A-2.1**  
PROJECT NUMBER 2155

© Knothe & Bruce Architects, LLC



EXTERIOR MATERIAL SCHEDULE			
MARK	BUILDING ELEMENT	MANUFACTURER	COLOR
1	COMPOSITE LAP 6"	JAMES HARDIE	RICH ESPRESSO
2	COMPOSITE LAP 4"	JAMES HARDIE	AGED PEWTER
3	COMPOSITE PANEL	JAMES HARDIE	BLUE
4	COMPOSITE PANEL	JAMES HARDIE	SILVER
5	BRICK VENEER	CLOUD CERAMICS	WINTER BLEND
7	CAST STONE	ROCKCAST	CRYSTAL WHITE
10	COMPOSITE WINDOWS	ANDERSEN 100	BLACK
11	ALUMINIUM STOREFRONT	N/A	BLACK
12	RAILING & HANDRAILS	SUPERIOR	BLACK

**NOT FOR CONSTRUCTION**



1 ELEVATION - WEST 1  
A-2.2 1/8" = 1'-0"

ISSUED



2 ELEVATION - WEST 2  
A-2.2 1/8" = 1'-0"

PROJECT TITLE  
**Cascade - The American Center LOT 50**

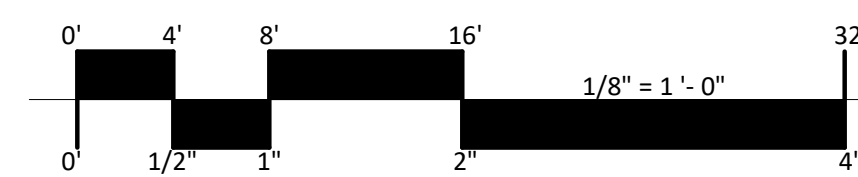
East Park Blvd.  
Madison, WI

SHEET TITLE  
**EXTERIOR ELEVATIONS LOT 50**

SHEET NUMBER

**A-2.2**  
PROJECT NUMBER 2155

© Knothe & Bruce Architects, LLC



EXTERIOR MATERIAL SCHEDULE			
MARK	BUILDING ELEMENT	MANUFACTURER	COLOR
1	COMPOSITE LAP 6"	JAMES HARDIE	RICH ESPRESSO
2	COMPOSITE LAP 4"	JAMES HARDIE	AGED PEWTER
3	COMPOSITE PANEL	JAMES HARDIE	BLUE
4	COMPOSITE PANEL	JAMES HARDIE	SILVER
5	BRICK VENEER	CLOUD CERAMICS	WINTER BLEND
7	CAST STONE	ROCKCAST	CRYSTAL WHITE
10	COMPOSITE WINDOWS	ANDERSEN 100	BLACK
11	ALUMINIUM STOREFRONT	N/A	BLACK
12	RAILING & HANDRAILS	SUPERIOR	BLACK

**NOT FOR CONSTRUCTION**

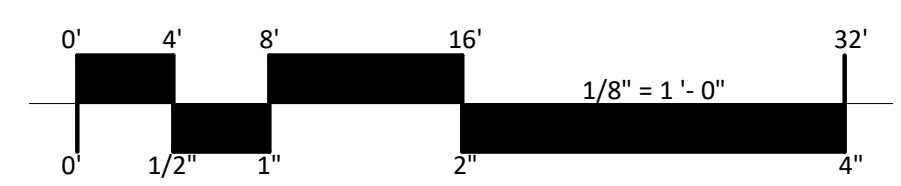




1 ELEVATION - SOUTH  
A-2.3 1/8" = 1'-0"



2 ELEVATION - TERRACE - SOUTH  
A-2.3 1/8" = 1'-0"



EXTERIOR MATERIAL SCHEDULE			
MARK	BUILDING ELEMENT	MANUFACTURER	COLOR
1	COMPOSITE LAP 6"	JAMES HARDIE	RICH ESPRESSO
2	COMPOSITE LAP 4"	JAMES HARDIE	AGED PEWTER
3	COMPOSITE PANEL	JAMES HARDIE	BLUE
4	COMPOSITE PANEL	JAMES HARDIE	SILVER
5	BRICK VENEER	CLOUD CERAMICS	WINTER BLEND
7	CAST STONE	ROCKCAST	CRYSTAL WHITE
10	COMPOSITE WINDOWS	ANDERSEN 100	BLACK
11	ALUMINIUM STOREFRONT	N/A	BLACK
12	RAILING & HANDRAILS	SUPERIOR	BLACK

ISSUED

PROJECT TITLE  
Cascade - The American Center LOT 50

East Park Blvd.  
Madison, WI

SHEET TITLE  
EXTERIOR ELEVATIONS LOT 50

SHEET NUMBER

A-2.3  
PROJECT NUMBER 2155

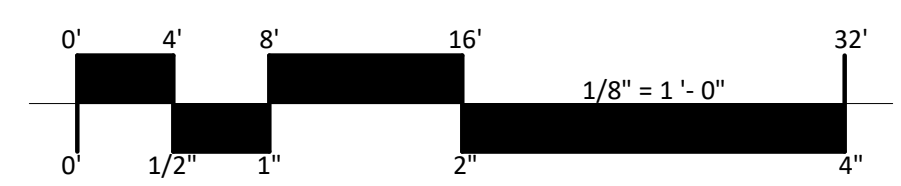
NOT FOR CONSTRUCTION



1 ELEVATION - NORTH  
A-2.4 1/8" = 1'-0"



2 ELEVATION - TERRACE - NORTH  
A-2.4 1/8" = 1'-0"



EXTERIOR MATERIAL SCHEDULE			
MARK	BUILDING ELEMENT	MANUFACTURER	COLOR
1	COMPOSITE LAP 6"	JAMES HARDIE	RICH ESPRESSO
2	COMPOSITE LAP 4"	JAMES HARDIE	AGED PEWTER
3	COMPOSITE PANEL	JAMES HARDIE	BLUE
4	COMPOSITE PANEL	JAMES HARDIE	SILVER
5	BRICK VENEER	CLOUD CERAMICS	WINTER BLEND
7	CAST STONE	ROCKCAST	CRYSTAL WHITE
10	COMPOSITE WINDOWS	ANDERSEN 100	BLACK
11	ALUMINIUM STOREFRONT	N/A	BLACK
12	RAILING & HANDRAILS	SUPERIOR	BLACK

ISSUED

PROJECT TITLE  
Cascade - The American Center LOT 50

East Park Blvd.  
Madison, WI

SHEET TITLE  
EXTERIOR ELEVATIONS LOT 50

SHEET NUMBER

A-2.4  
PROJECT NUMBER 2155

NOT FOR CONSTRUCTION



1 COLORED ELEVATION - EAST 1  
 A-2.5 1/8" = 1'-0"



2 COLORED ELEVATION - EAST 2  
 A-2.5 1/8" = 1'-0"

ISSUED

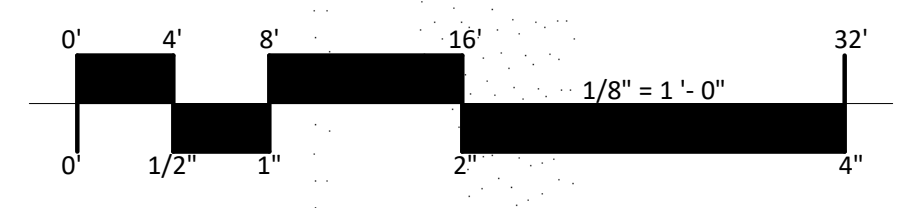
PROJECT TITLE  
**Cascade - The American Center LOT 50**

East Park Blvd.  
 Madison, WI

SHEET TITLE  
**EXTERIOR ELEVATIONS COLORED LOT 50**  
 SHEET NUMBER

**A-2.5**  
 PROJECT NUMBER 2155

© Knothe & Bruce Architects, LLC



EXTERIOR MATERIAL SCHEDULE			
MARK	BUILDING ELEMENT	MANUFACTURER	COLOR
1	COMPOSITE LAP 6"	JAMES HARDIE	RICH ESPRESSO
2	COMPOSITE LAP 4"	JAMES HARDIE	AGED PEWTER
3	COMPOSITE PANEL	JAMES HARDIE	BLUE
4	COMPOSITE PANEL	JAMES HARDIE	SILVER
5	BRICK VENEER	CLOUD CERAMICS	WINTER BLEND
7	CAST STONE	ROCKCAST	CRYSTAL WHITE
10	COMPOSITE WINDOWS	ANDERSEN 100	BLACK
11	ALUMINIUM STOREFRONT	N/A	BLACK
12	RAILING & HANDRAILS	SUPERIOR	BLACK

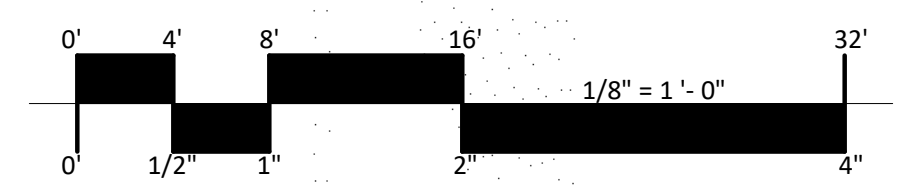
NOT FOR CONSTRUCTION



1 COLORED ELEVATION - WEST 1  
 A-2.6 1/8" = 1'-0"



2 COLORED ELEVATION - WEST 2  
 A-2.6 1/8" = 1'-0"



EXTERIOR MATERIAL SCHEDULE			
MARK	BUILDING ELEMENT	MANUFACTURER	COLOR
1	COMPOSITE LAP 6"	JAMES HARDIE	RICH ESPRESSO
2	COMPOSITE LAP 4"	JAMES HARDIE	AGED PEWTER
3	COMPOSITE PANEL	JAMES HARDIE	BLUE
4	COMPOSITE PANEL	JAMES HARDIE	SILVER
5	BRICK VENEER	CLOUD CERAMICS	WINTER BLEND
7	CAST STONE	ROCKCAST	CRYSTAL WHITE
10	COMPOSITE WINDOWS	ANDERSEN 100	BLACK
11	ALUMINIUM STOREFRONT	N/A	BLACK
12	RAILING & HANDRAILS	SUPERIOR	BLACK

ISSUED

PROJECT TITLE  
 Cascade - The  
 American Center  
 LOT 50

East Park Blvd.  
 Madison, WI

SHEET TITLE  
 EXTERIOR  
 ELEVATIONS  
 COLORED  
 LOT 50  
 SHEET NUMBER

**A-2.6**  
 PROJECT NUMBER 2155

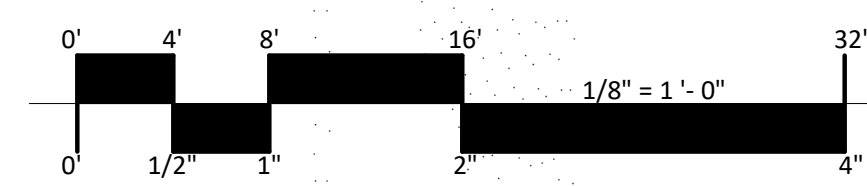
NOT FOR CONSTRUCTION



**1** COLORED ELEVATION - SOUTH  
 A-2.7 1/8" = 1'-0"



**2** COLORED ELEVATION - TERRACE - SOUTH  
 A-2.7 1/8" = 1'-0"



EXTERIOR MATERIAL SCHEDULE			
MARK	BUILDING ELEMENT	MANUFACTURER	COLOR
1	COMPOSITE LAP 6"	JAMES HARDIE	RICH ESPRESSO
2	COMPOSITE LAP 4"	JAMES HARDIE	AGED PEWTER
3	COMPOSITE PANEL	JAMES HARDIE	BLUE
4	COMPOSITE PANEL	JAMES HARDIE	SILVER
5	BRICK VENEER	CLOUD CERAMICS	WINTER BLEND
7	CAST STONE	ROCKCAST	CRYSTAL WHITE
10	COMPOSITE WINDOWS	ANDERSEN 100	BLACK
11	ALUMINIUM STOREFRONT	N/A	BLACK
12	RAILING & HANDRAILS	SUPERIOR	BLACK

ISSUED

PROJECT TITLE  
 Cascade - The  
 American Center  
 LOT 50

East Park Blvd.  
 Madison, WI

SHEET TITLE  
 EXTERIOR  
 ELEVATIONS  
 COLORED  
 LOT 50  
 SHEET NUMBER

**A-2.7**  
 PROJECT NUMBER 2155

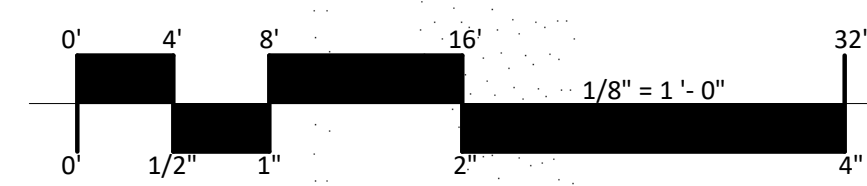
NOT FOR CONSTRUCTION



**1** COLORED ELEVATION - NORTH  
 A-2.8 1/8" = 1'-0"



**2** COLORED ELEVATION - TERRACE - NORTH  
 A-2.8 1/8" = 1'-0"



EXTERIOR MATERIAL SCHEDULE			
MARK	BUILDING ELEMENT	MANUFACTURER	COLOR
1	COMPOSITE LAP 6"	JAMES HARDIE	RICH ESPRESSO
2	COMPOSITE LAP 4"	JAMES HARDIE	AGED PEWTER
3	COMPOSITE PANEL	JAMES HARDIE	BLUE
4	COMPOSITE PANEL	JAMES HARDIE	SILVER
5	BRICK VENEER	CLOUD CERAMICS	WINTER BLEND
7	CAST STONE	ROCKCAST	CRYSTAL WHITE
10	COMPOSITE WINDOWS	ANDERSEN 100	BLACK
11	ALUMINIUM STOREFRONT	N/A	BLACK
12	RAILING & HANDRAILS	SUPERIOR	BLACK

ISSUED

PROJECT TITLE  
 Cascade - The  
 American Center  
 LOT 50

East Park Blvd.  
 Madison, WI

SHEET TITLE  
 EXTERIOR  
 ELEVATIONS  
 COLORED  
 LOT 50  
 SHEET NUMBER

**A-2.8**  
 PROJECT NUMBER 2155

NOT FOR CONSTRUCTION



R1

LOT 49 - LOOKING EAST





R2

LOT 49 - LOOKING SOUTH







R3

LOT 50 & 49 - LOOKING SOUTH





R4

LOT 50 - LOOKING WEST





R5

LOT 50 - LOOKING NORTH-WEST





R6

LOT 50 - LOOKING SOUTH-EAST





R7

LOT 50 - LOOKING NORTH-EAST

