

Time: 5/9/2018 11:19:44 AM

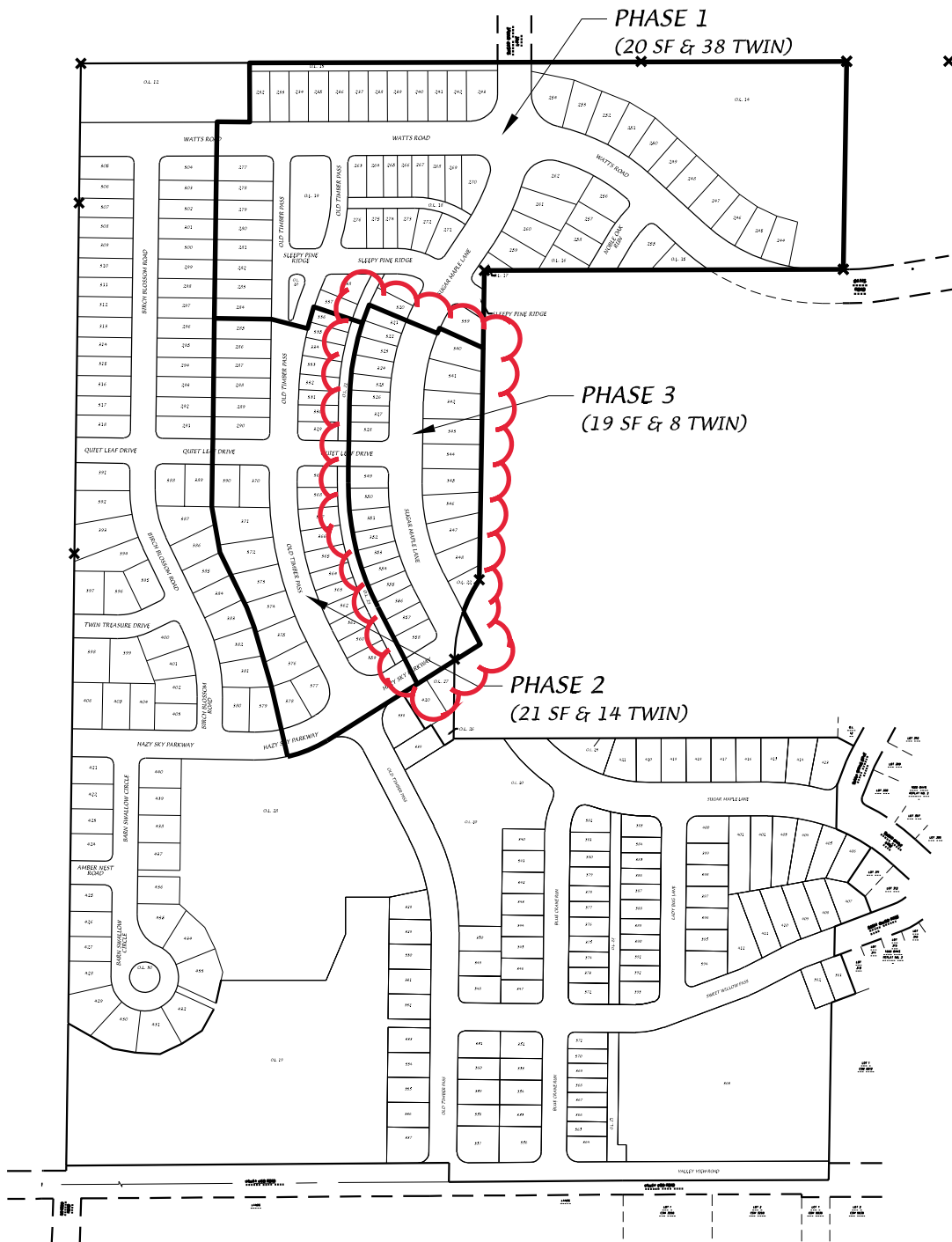
Session: C:\GTViewer_Sessions\Deming & Fourier SW.gts

City of Madison, WI - GIS/Mapping data

Printed By: entnt

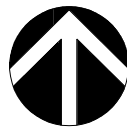
Disclaimer: The City makes no representation about the accuracy of these records and shall not be liable for any damages

Birchwood Point South - Phase Map



D'ONOFRIO KOTTKE AND ASSOCIATES, INC.

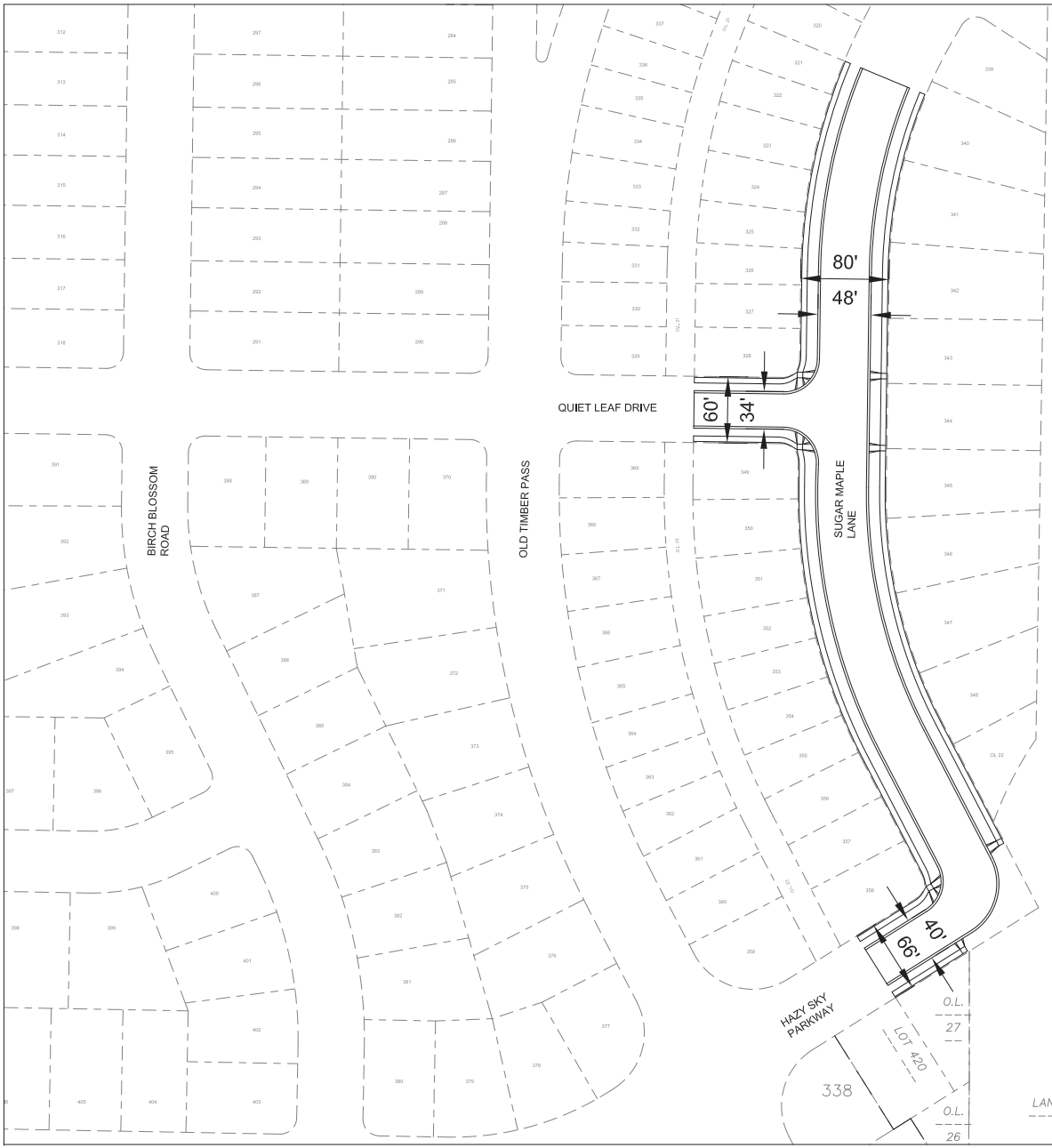
7530 Westward Way, Madison, WI 53717
 Phone: 608.833.7530 • Fax: 608.833.1089
YOUR NATURAL RESOURCE FOR LAND DEVELOPMENT



0 400
 Scale 1" = 400'

DATE: 01-21-20
 REV.:
 F.N.: 18-05-158
 DRAWN BY: JMS

U:/USER/1707116/DRAWINGS/Phase Map.DWG



**BIRCHWOOD POINT SOUTH
PHASE 3**

**MUNIS NO. 12887
CONTRACT NO. 8550**



CONSULT THE
MUNICIPALITY OF
SUGAR MAPLE
FOR THE
LATEST
REVISIONS

LANDS