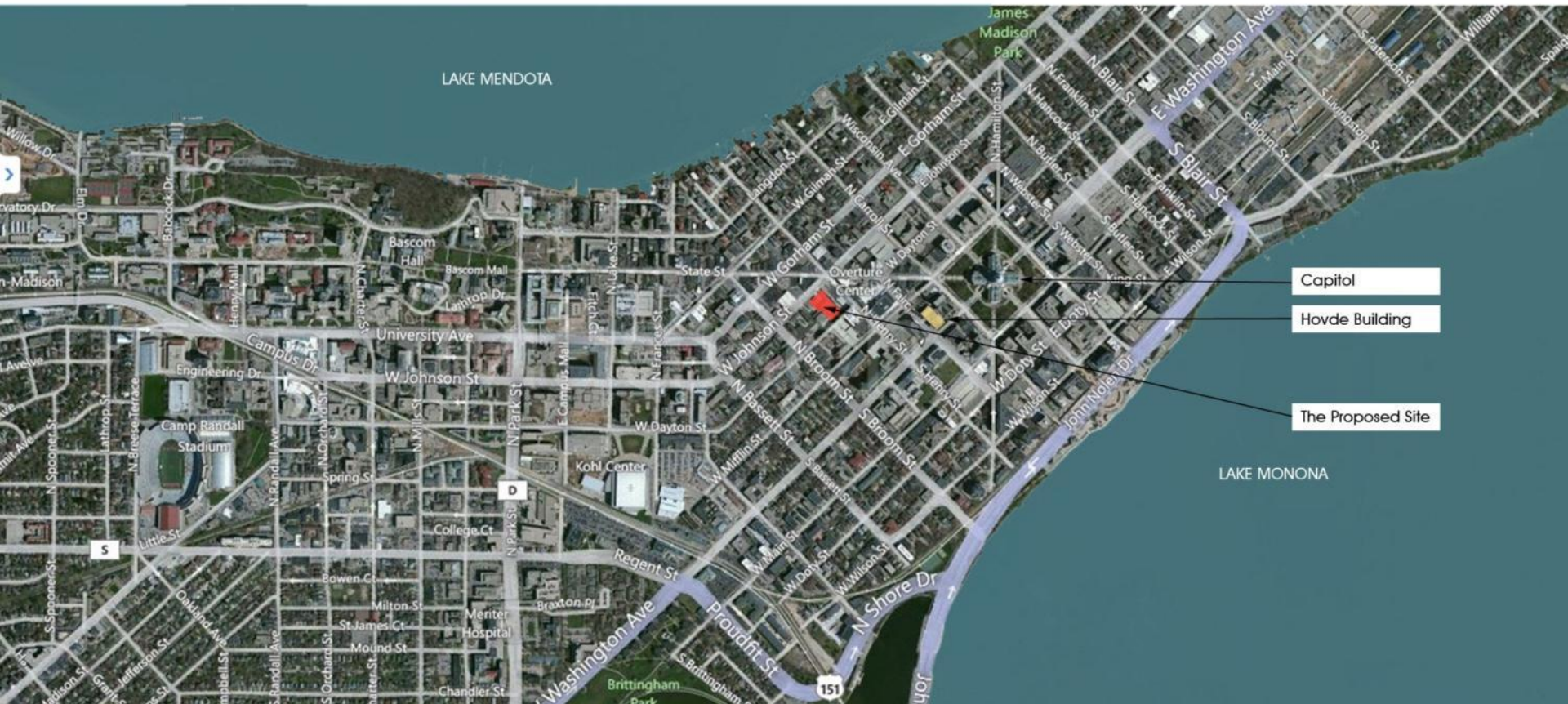


**309**

**West Johnson Street**

MADISON · WISCONSIN  
FEBRUARY 6, 2013

**Urban Design Commission**



Capitol

Hovde Building

The Proposed Site

site location

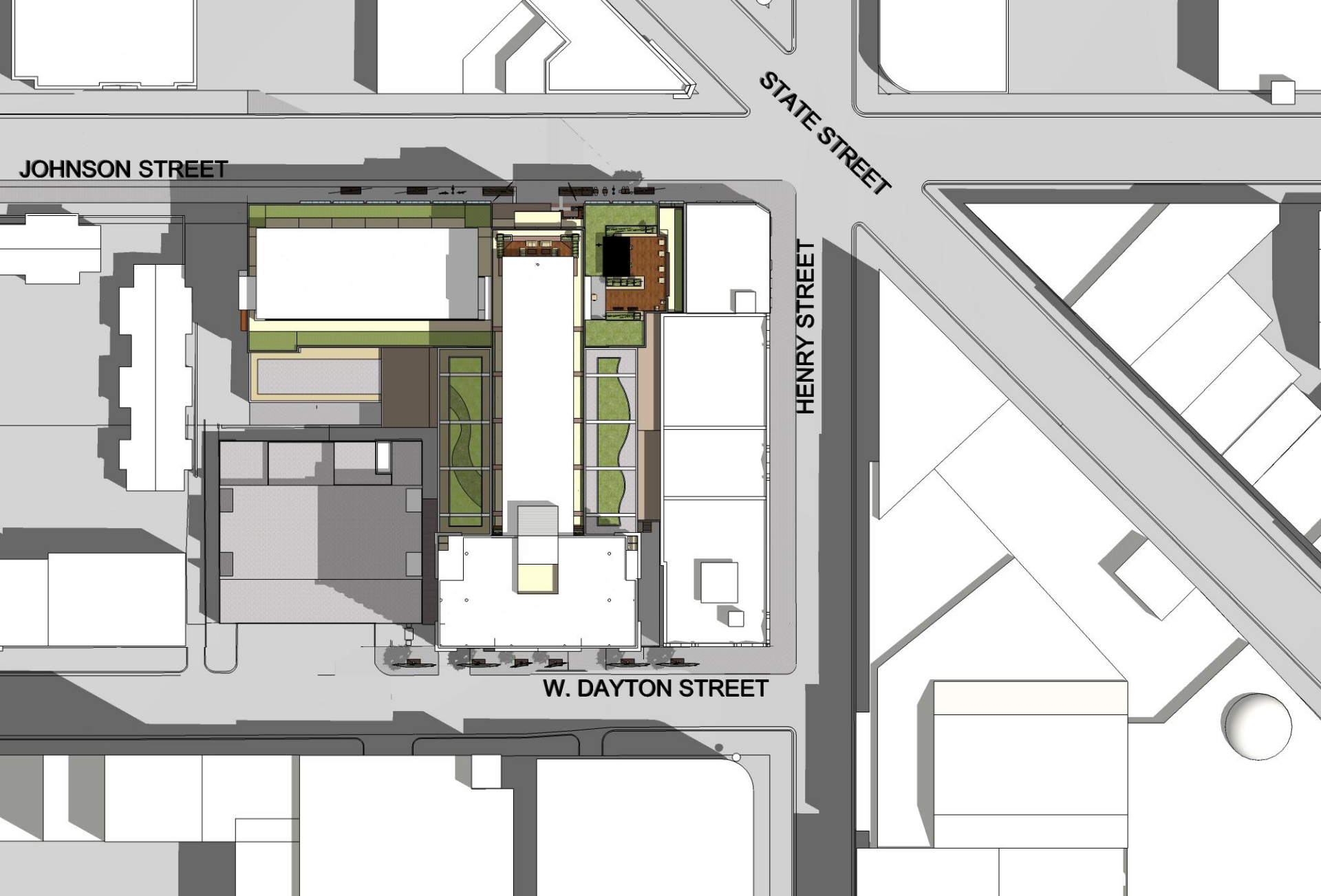
# MAXIMUM BUILDING HEIGHTS

- C - Capitol View Preservation Limit
- 12 Stories
- 10 Stories
- 8 Stories
- 6 Stories
- 5 Stories
- 4 Stories
- 3 Stories
- Height Bonus Areas
- Existing and Proposed Park and Open Space
- 15' Stepback Above 4 Stories

Note: The Edgewater Hotel Development was approved at 9-stories, but this does not mean that 9-story buildings are appropriate throughout the greater area.



downtown plan land use



site plan



state street perspective - 9/19/12



state street perspective - proposed



johnson street perspective - 9/19/12



johnson street perspective - proposed





**johnson street perspective - 9/19/12**



**johnson street perspective – proposed**



aerial looking south - 9/19/12



aerial looking south - proposed



johnson street perspective - 9/19/12



johnson street perspective - proposed



johnson street perspective - 9/19/12



johnson street perspective - proposed





aerial looking east- 9/19/12



**aerial looking east- proposed**



aerial looking north - 9/19/12



**aerial looking north – proposed**



aerial looking west - 9/19/12



**aerial looking west - proposed**



**dayton street perspective – 9/19/12**



**dayton street perspective – proposed**





dayton street perspective - 9/19/12



dayton street perspective – proposed



**dayton street perspective – proposed**



dayton street perspective - 9/19/12



dayton street perspective – proposed





**13<sup>th</sup> floor roof terrace perspective**



**13<sup>th</sup> floor roof terrace perspective**





**7<sup>th</sup> floor landscape perspective**



**7<sup>th</sup> floor landscape perspective**