

# 1401 Emil St., Madison, WI

---

Architect: Dimension IV - Madison Design Group  
6515 Grand Teton Plaza, Suite 120, Madison, WI 53719  
608-829-4444

Developer: Boardwalk Investments, Madison, WI  
Landscape Architect: Paul Skidmore, Landscape Architect, L.L.C., Madison, WI  
Civil Engineers: Quam Engineering, L.L.C., McFarland, WI

---

## Sheets

Waste Management Plan

Existing Site Plan

Proposed Site Plan

Grading and Erosion Control Plan

Utility Plan

L1.0 Landscape Plan & Worsheet

Bike Rack Detail

E1.0 Site Lighting Plan & Cutsheets

A1.0 Elevations

A1.1 Elevations

A1.2 Perspectives

Project Location



1401 Emil Street  
Madison, WI 53713

## Waste Management Plan

November 12, 2012

### Introduction:

1401 Emil Street, commonly known as the Pizza Pit restaurant located at Fish Hatchery Road and West Beltline Highway, consists of one existing building needing to be razed. This building is a wood and brick structure.

The intent of the owner is to start demolition and reconstruction of the site in March 2013 to build a new 3550 square foot building.

During this process it is our goal to recycle as much of the existing building material as possible in an effort to keep these items out of Wisconsin Landfills.

### Building Contents:

Cabinets and Countertops	Plumbing Fixtures and Piping
Carpeting	Light Fixtures
Ceiling Tile	Wood and Aluminum Windows
Doors and Hardware	Concrete and Asphalt
Electrical Components	Wood

### Pre-Deconstruction

- Site will be assessed for asbestos, lead, and other contaminants which will be removed as required per State of Wisconsin regulations.
- Light bulbs, ballasts, and thermostats will be recycled due to Mercury and PCB components

### Salvaged Materials

- Any structural steel building beams will be salvaged and reused or sold.
- Contractor will make all non-structural materials available for donation.

### Recycled Materials

- Wood not to be reused or salvaged will be separated into dedicated wood containers to be supplied and recycled.
- Metals not to be reused or salvaged will be separated into dedicated metal containers to be recycled.
- All asphalt and concrete from parking areas and floor slabs will be recycled.
- Copper piping and wiring will be separated and recycled.
- All non-recyclable materials will be land filled.

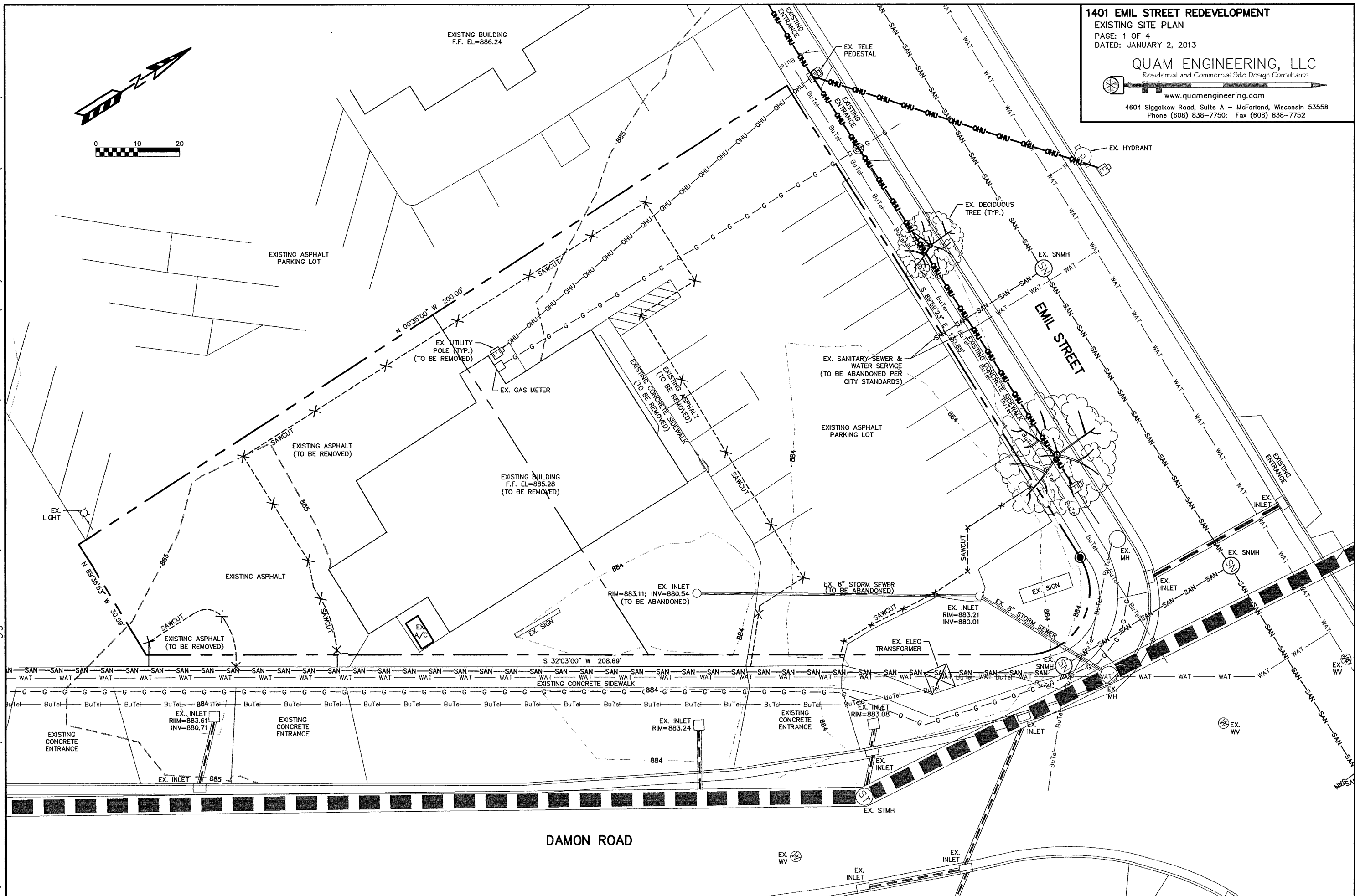
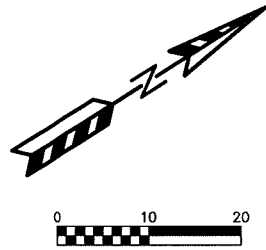
### Implementation

- Communication of the management plan will be goals with on-site contractors
- Labeling of all containers to avoid contamination.

QUAM ENGINEERING, LLC 4604 Siggelkow Road, Suite A - McFarland, WI 53558 (608) 838-7750 \BI-10-12\BI10BASE.DWG

**1401 EMIL STREET REDEVELOPMENT**  
 EXISTING SITE PLAN  
 PAGE: 1 OF 4  
 DATED: JANUARY 2, 2013

**QUAM ENGINEERING, LLC**  
 Residential and Commercial Site Design Consultants  
 www.quamengineering.com  
 4604 Siggelkow Road, Suite A - McFarland, Wisconsin 53558  
 Phone (608) 838-7750; Fax (608) 838-7752





QUAM ENGINEERING, LLC 4604 Siggekkow Road, Suite A - McFarland, WI 53558 (608) 838-7750 BI-10-12\B110BASE.DWG

**GENERAL NOTES:**

ALL WORK IN THE PUBLIC RIGHT-OF-WAY SHALL BE PERFORMED BY A CITY LICENSED CONTRACTOR.

THE CONTRACTOR SHALL REPLACE ALL DAMAGED SIDEWALK, CURB AND ASPHALT IN RIGHT-OF-WAY PER CITY STANDARDS.

THE CONTRACTOR SHALL OBTAIN A STREET EXCAVATION PERMIT FOR THE INSTALLATION OF UTILITIES REQUIRED TO SERVE THIS PROJECT. THE CONTRACTOR SHALL PAY THE PERMIT FEE, INSPECTION FEE, AND STREET DEGRADATION FEE AND SHALL COMPLY WITH ALL CONDITIONS OF THE PERMIT.

THE CONTRACTOR SHALL OBTAIN A PERMIT TO PLUG EACH EXISTING SANITARY SEWER LATERAL THAT SERVES A BUILDING THAT IS PROPOSED FOR DEMOLITION. FOR EACH LATERAL TO BE PLUGGED THE OWNER SHALL DEPOSIT \$1,000 WITH THE CITY ENGINEER IN TWO SEPARATE CHECKS IN THE FOLLOWING AMOUNTS: (1) \$100 NON-REFUNDABLE DEPOSIT FOR THE COST OF INSPECTION OF THE PLUGGING BY CITY STAFF; AND (2) \$900 FOR THE COST OF CITY CREWS TO PERFORM THE PLUGGING. IF THE OWNER ELECTS TO COMPLETE THE PLUGGING OF A LATERAL BY PRIVATE CONTRACTOR AND THE PLUGGING IS INSPECTED AND APPROVED BY THE CITY ENGINEER, THE \$900 FEE SHALL BE REFUNDED TO THE OWNER.

**UTILITY NOTES:**

ALL SANITARY SEWER AND WATER MAIN CONSTRUCTION SHALL BE IN COMPLIANCE WITH THE CITY OF MADISON AND WISCONSIN DSPS STANDARDS.

THE LENGTHS OF ALL UTILITIES ARE TO CENTER OF STRUCTURES OR FITTINGS AND MAY VARY SLIGHTLY FROM THE PLAN. LENGTHS SHALL BE VERIFIED IN THE FIELD DURING CONSTRUCTION.

ALL WATER MAIN SHALL BE BURIED TO A DEPTH OF 6.5 FEET. THE DEPTH IS DEFINED AS THE DISTANCE BETWEEN THE FINISHED GRADE ELEVATION AND THE TOP OF WATER MAIN OR SERVICE.

MAINTAIN AN 8 FOOT MINIMUM HORIZONTAL SEPARATION DISTANCE BETWEEN PUBLIC SANITARY SEWER, WATER MAIN AND STORM SEWER. PROVIDE 18" MINIMUM VERTICAL SEPARATION WHERE SEWER CROSSES OVER WATER MAIN AND PROVIDE 6" MINIMUM VERTICAL SEPARATION WHERE WATER MAIN CROSSES OVER SEWER.

ANY UTILITIES WHICH ARE DAMAGED BY THE CONTRACTOR SHALL BE REPAIRED TO THE OWNER'S SATISFACTION AT THE CONTRACTOR'S EXPENSE.

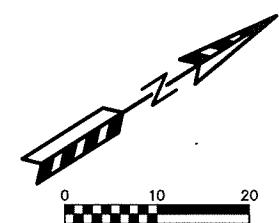
ALL UNDERGROUND EXTERIOR NON-METALLIC SEWERS/MAINS AND WATER SERVICES/MAINS MUST BE PROVIDED WITH TRACER WIRE OR OTHER METHODS IN ORDER TO BE LOCATED IN ACCORDANCE WITH 182.0715(2r) OF STATE STATUTES.

THE EXISTING UTILITY SERVICES TO THE EXISTING BUILDING SHALL BE ABANDONED. THE ABANDONMENT SHALL BE IN CONFORMANCE WITH THE CITY OF MADISON AND WISCONSIN DSPS STANDARDS.

THE PROPOSED ELECTRIC, TELEPHONE AND GAS UTILITY LOCATIONS ARE NOT SHOWN. ACTUAL LOCATIONS AND DESIGN SHALL BE COMPLETED BY OTHERS.

THE MADISON WATER UTILITY SHALL BE NOTIFIED TO REMOVE THE EXISTING WATER METER PRIOR TO DEMOLITION OF EXISTING BUILDING.

ANY DAMAGE TO DAMON ROAD AND EMIL STREET PAVEMENT WILL REQUIRE RESTORATION IN ACCORDANCE WITH THE CITY OF MADISON PATCHING CRITERIA.

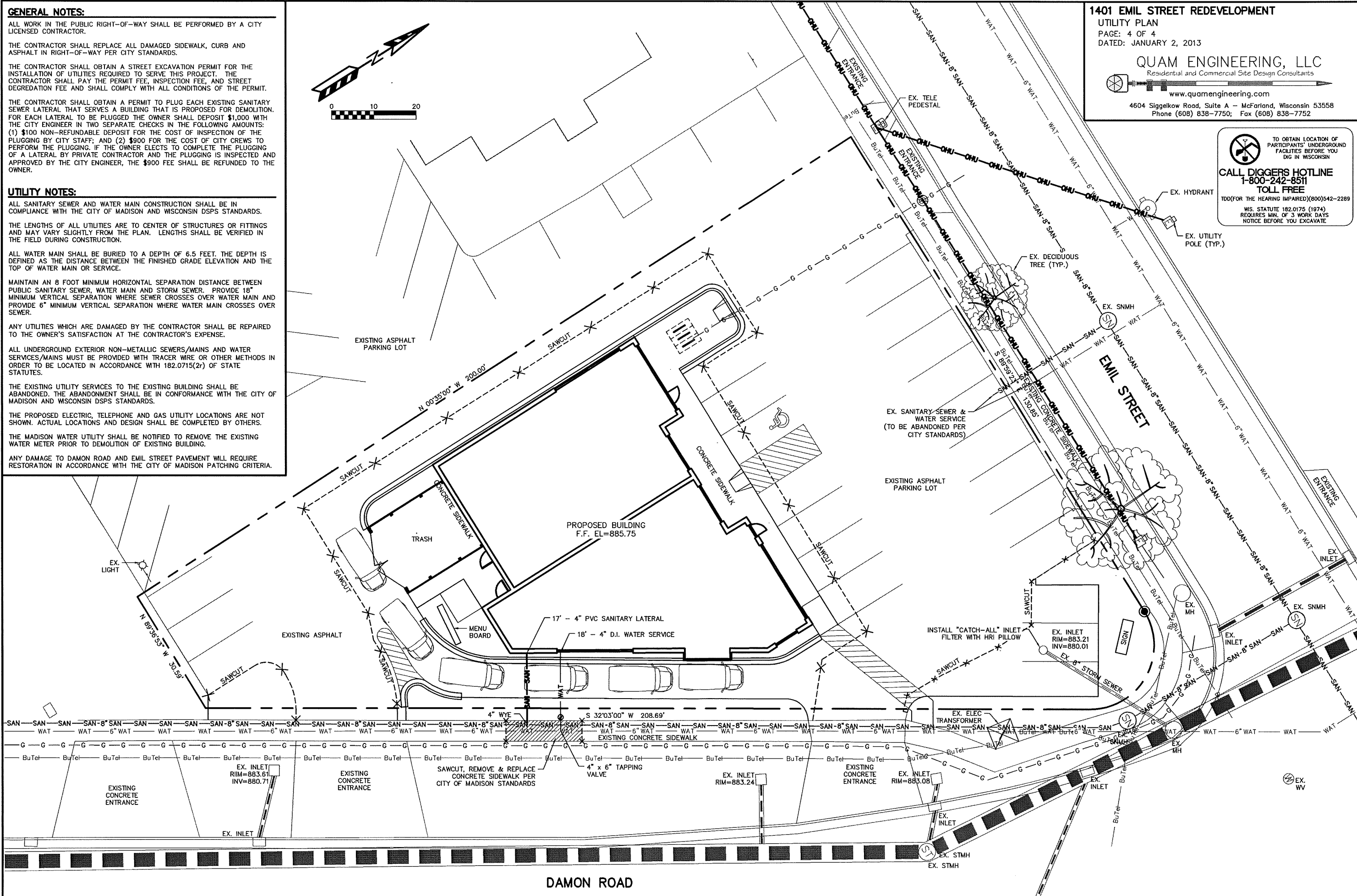


**1401 EMIL STREET REDEVELOPMENT**  
 UTILITY PLAN  
 PAGE: 4 OF 4  
 DATED: JANUARY 2, 2013

**QUAM ENGINEERING, LLC**  
 Residential and Commercial Site Design Consultants  
 www.quamengineering.com  
 4604 Siggekkow Road, Suite A - McFarland, Wisconsin 53558  
 Phone (608) 838-7750; Fax (608) 838-7752

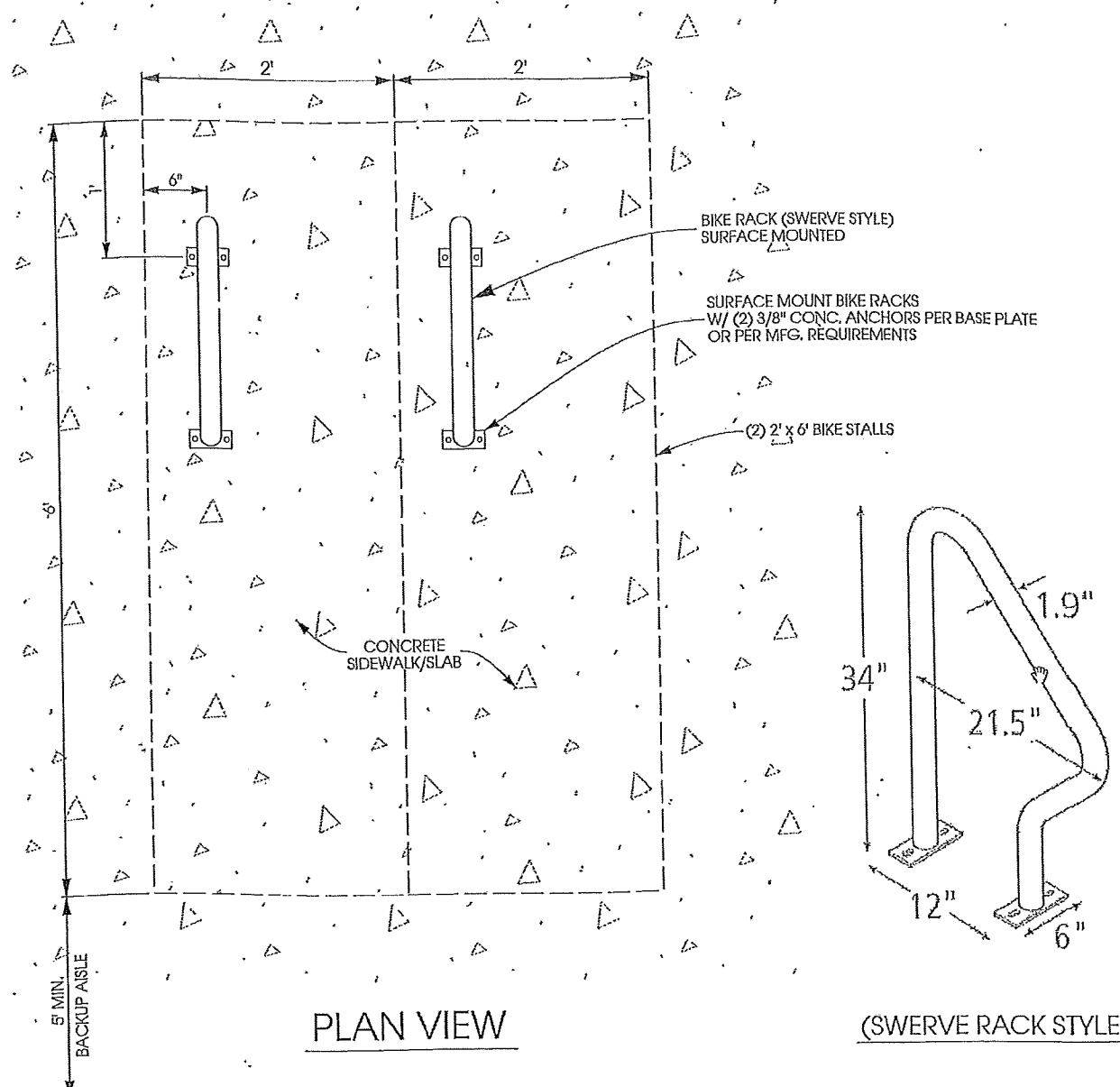
TO OBTAIN LOCATION OF PARTICIPANTS' UNDERGROUND FACILITIES BEFORE YOU DIG IN WISCONSIN

**CALL DIGGERS HOTLINE**  
 1-800-242-8511  
 TOLL FREE  
 TDD(FOR THE HEARING IMPAIRED)(800)542-2289  
 WS. STATUTE 182.0175 (1974)  
 REQUIRES MIN. OF 3 WORK DAYS  
 NOTICE BEFORE YOU EXCAVATE

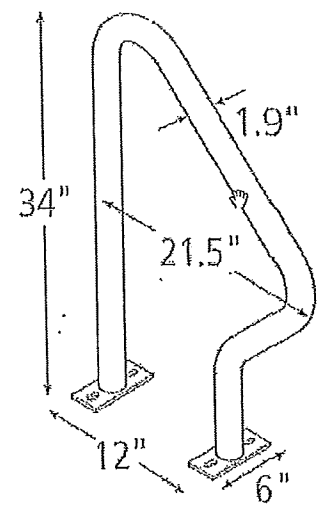


DAMON ROAD





PLAN VIEW



(SWERVE RACK STYLE)

**B** **BIKE RACK DETAIL**  
 C5.0 SCALE: 11 X 17 - NTS  
 22 X 34 - NTS



**EMIL STREET  
 RETAIL**

EMIL STREET  
 MADISON, WI

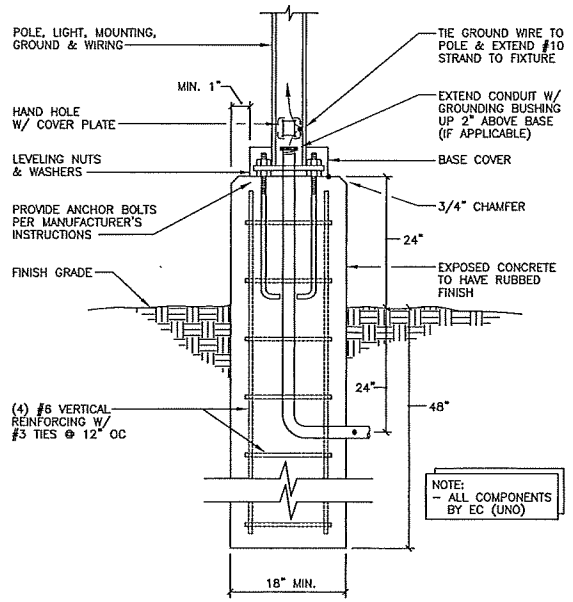
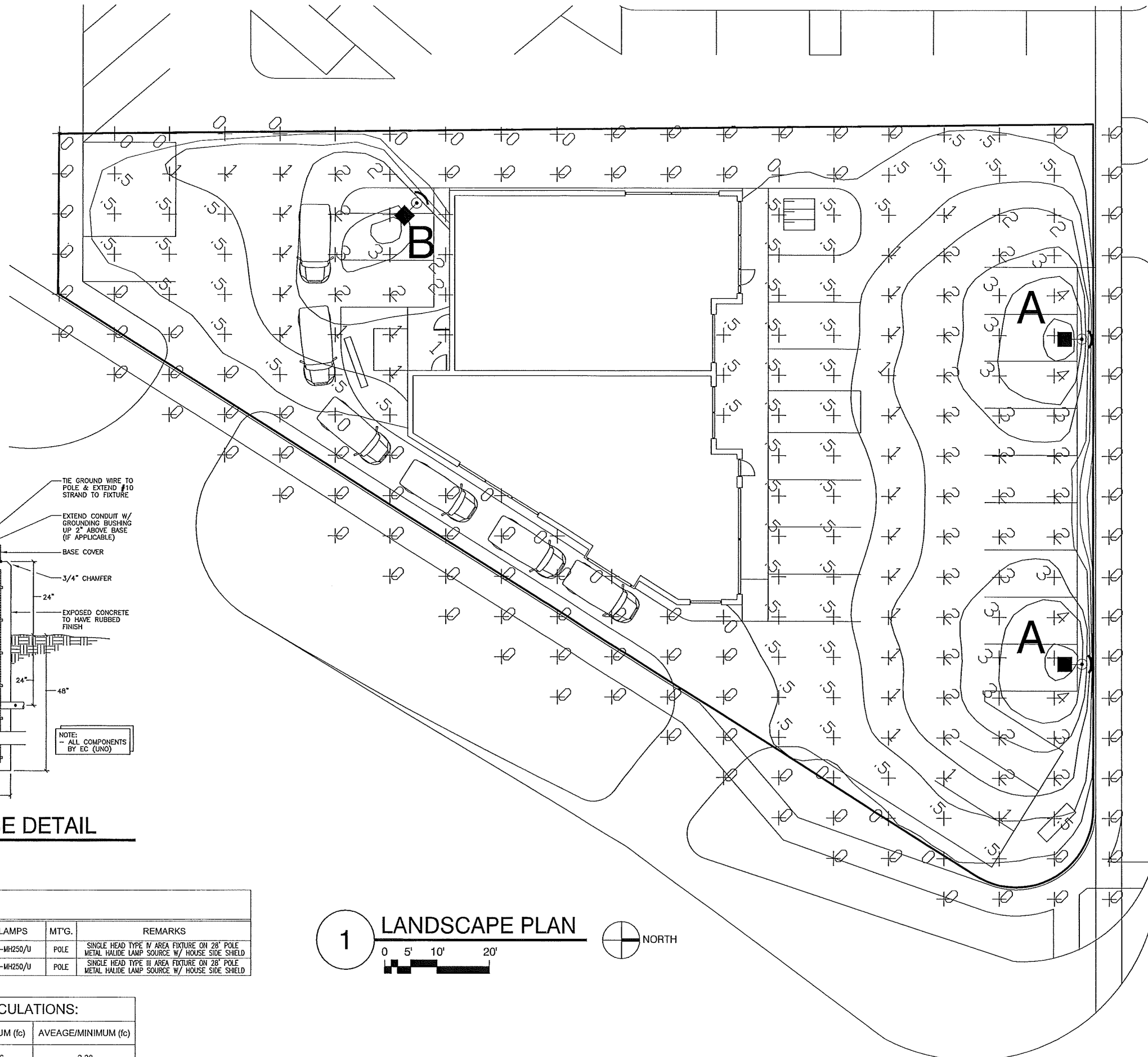
DATE OF ISSUE: 11/12/12

REVISIONS:


PROJECT #: 11108

**SITE LIGHTING  
 PLAN**

**E1.0**



**2 POLE BASE DETAIL**  
 N.T.S.

**1 LANDSCAPE PLAN**  
 0 5' 10' 20'  
 NORTH

**FIXTURE SCHEDULE**

TYPE	MANUFACTURER	CATALOG NO.	VOLTS	LAMPS	MT'G.	REMARKS
A	MCGRAW EDISON	CAL-250-MH-4F-CA18	120	1-MH250/U	POLE	SINGLE HEAD TYPE IV AREA FIXTURE ON 28' POLE METAL HALIDE LAMP SOURCE W/ HOUSE SIDE SHIELD
B	MCGRAW EDISON	CAL-250-MH-3F-MA1055	120	1-MH250/U	POLE	SINGLE HEAD TYPE III AREA FIXTURE ON 28' POLE METAL HALIDE LAMP SOURCE W/ HOUSE SIDE SHIELD

**NEW PARKING LOT CALCULATIONS:**

AVERAGE (fc)	MAXIMUM (fc)	MINIMUM (fc)	AVERAGE/MINIMUM (fc)
.82	4.79	.36	2.28

# McGRAW-EDISON®

## DESCRIPTION

The McGraw-Edison Concourse III is the most versatile, functionally designed, universally adaptable outdoor lighting luminaire available. Through a variety of mounting styles, it offers a family of low profile sharp-cutoff luminaires that make optimum use of today's high output HID sources.

Enhancing natural landscapes as well as cityscapes, the Concourse III brings outstanding performance and style to walkways, parking lots, roadways, loading docks, building areas, and any security lighting application. U.L. listed and CSA certified for wet locations.

## SPECIFICATION FEATURES

### A ... Latches

Two spring-steel quick release latches on housing for toolless entry.

### B ... Socket

Porcelain mogul-base screw shell type lamp socket with spring-loaded center contact.

### C ... Housing

One-piece, die-cast aluminum housing features aesthetically pleasing soft-corner design.

### D ... Gasketing

Closed cell gas-filled high temperature silicone gasketing completely seals optical system from dirt, bugs or other foreign material.

### E ... Lens

Thermal shock- and impact resistant clear tempered glass.

### F ... Optics

Optional high efficiency segmented or hydroformed reflectors available in a range of distributions. Reflector modules attach to the housing. All reflectors are field rotatable in 90° increments.(5)

### G ... Mounting

Universal mounting clamp concealed in housing fits 1 1/2" to 2 3/8" O.D. horizontal tenons without adapters. Provides a +5° vertical leveling adjustment. All mounting option includes arm and round pole adapter with the fixture for single carton shipment.

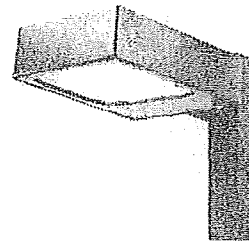
### H ... Ballast

Easily removable high power factor HID multi-tap ballast is standard.

### J ... Hinges

Integral hinges prevent door rocking and optimize sealing capabilities.

Catalog #	CAL-250-MH-120-4F - DK-HS-CA1Y	Type	
Project	EMIL ST RETAIL	Date	A
Comments		Date	
Prepared by	TIM CRUM	Date	11-12-12

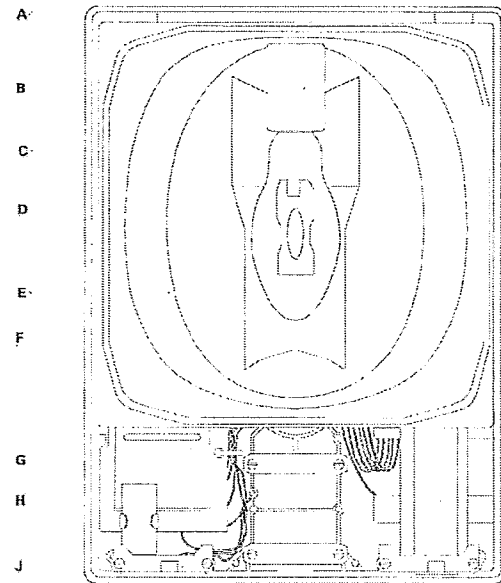


## CAL CONCOURSE III

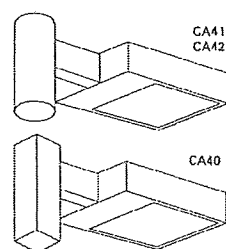
70 - 400W  
High Pressure Sodium  
Metal Halide

ARCHITECTURAL  
AREA LUMINAIRE

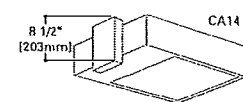
**DARK SKY** FCO  
COMPLIANT Full Cutoff



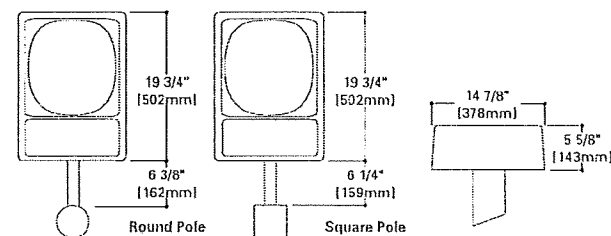
### DIRECT ARM MOUNTINGS



### WALL MOUNT ADAPTER



## DIMENSIONS



Specifications and Dimensions subject to change without notice.  
Consult your representative for additional options and finishes.

**ENERGY DATA**  
Hi-Reactance Ballast Input Watts  
70W HPS HPF (95 Watts)  
70W MH HPF (94 Watts)  
100W HPS HPF (130 Watts)  
100W MH HPF (129 Watts)  
CWA Ballast Input Watts  
150W MH HPF (210 Watts)  
175W MH HPF (210 Watts)  
250W HPS HPF (300 Watts)  
250W MH HPF (295 Watts)  
400W HPS HPF (465 Watts)  
400W MH HPF (455 Watts)

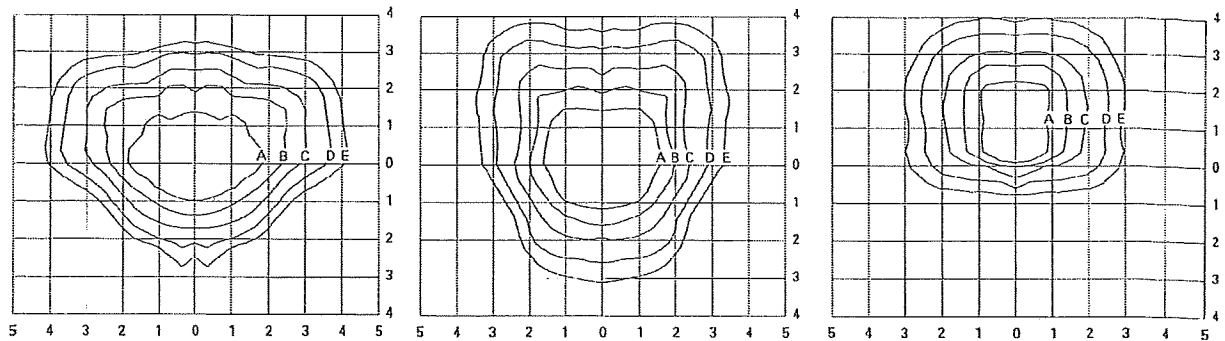
**EPA**  
Effective Projected Area: 0.9

**SHIPPING DATA**  
Approximate Net Weight:  
39 lbs. (18 kgs.)



ADH060022  
03/20/2007 1:34:12 PM

PHOTOMETRICS



**CAL-400-MH-MT-3S**  
400-Watt MH Type III Segmented  
40,000-Lumen Clear Lamp

**CAL-400-MH-MT-4S**  
400-Watt MH Type IV Segmented  
40,000-Lumen Clear Lamp

**CAL-400-MH-MT-SL**  
400-Watt MH Forward Throw Spill Light Eliminator  
40,000-Lumen Clear Lamp

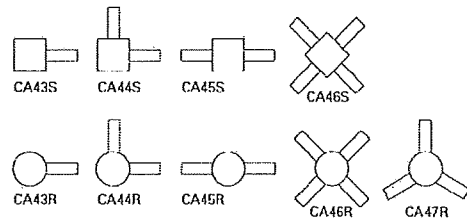
**Footcandle Table**

Select mounting height and read across for footcandle values of each isofootcandle line. Distance in units of mounting height.

Mounting Height	Footcandle Values for Isofootcandle Lines				
	A	B	C	D	E
2'	3.00	1.50	0.75	0.30	0.15
2.5'	2.00	1.00	0.50	0.20	0.10
3'	1.38	0.69	0.34	0.13	0.06

**Top Mounting for Square and Round Poles (order separately)**

Accommodates 2 3/8"-3" O.D. vertical tenons (arm included). Catalog number includes slipfilter and mounting arm(s). Square unit height is 6 1/4". Round unit height is 6 3/4".



Catalog Number	E.P.A.	Wt. (lbs.)
CA43S	1.2	39
CA44S	2.3	75
CA45S	2.3	75
CA46S	2.3	146
CA43R	1.2	39
CA44R	2.3	75
CA45R	2.3	75
CA46R	2.3	145
CA47R	2.4	111

ORDERING INFORMATION

Sample Number: CAL-400-MH-MT-SL-BZ

**CAL** **250** **MH** **120** **4F** **DK** **HS** **CA18**

**Product Family**  
CAL=Concourse III<sup>1</sup>

**Lamp Wattage**  
70=70W  
100=100W  
150=150W  
175=175W  
250=250W  
400=400W<sup>2</sup>

**Lamp Type**  
MH= Metal Halide  
HPS= High Pressure Sodium

**Voltage**<sup>3</sup>  
120= 120V  
208= 208V  
240= 240V  
277= 277V  
480= 480V

**MT= Multi-Tap**<sup>4</sup>  
**TT= Triple-Tap**<sup>4</sup>

**Distribution**  
2F= Design 20 Formed  
2S= Type II Segmented  
3F= Design 30 Formed  
3S= Type III Segmented  
4F= Design 40 Formed  
4S= Type IV Segmented<sup>5</sup>  
5F= Design 50 Formed  
5S= Type V Segmented  
SL= Spill Light Eliminator

**Color**<sup>6</sup>  
AP= Grey  
BZ= Bronze  
BK= Black  
WH= White  
DP= Dark Platinum  
GM= Graphite Metallic

**Options**<sup>7</sup>  
AI= Arm Included<sup>8</sup>  
F= Single Fuse (120, 277 or 347V)  
FF= Double Fuse (208, 240 or 480V)  
P= Button Type Photocontrol (Specify Voltage)  
Q= Quartz Restrike (Hot restrike<sup>9, 10</sup> only)  
R= NEMA Twistlock Photocontrol Receptacle  
V= Vandal Shield  
HS= House Side Shield<sup>11</sup>  
L= Lamp Included

**Accessories**<sup>12</sup>  
CA14XX= Well Mount Adapter  
CA40XX= Direct Arm Mount for Square Pole (EPA 0.2)  
CA41XX= Direct Arm Mount for 3" O.D. Round Pole (EPA 0.2)  
CA42XX= Direct Arm Mount for 3 1/2"-4" O.D. Round Pole (EPA 0.2)  
CA43SXX= Single Arm Tenon Adapter for 2 3/8"-3" O.D. Tenon Square Pole  
CA44SXX= 2 @ 90° Arm Tenon Adapter for 2 3/8"-3" O.D. Tenon Square Pole  
CA45SXX= 2 @ 180° Arm Tenon Adapter for 2 3/8"-3" O.D. Tenon Square Pole  
CA46SXX= 4 @ 90° Arm Tenon Adapter for 2 3/8"-3" O.D. Tenon Square Pole  
CA47SXX= 3 @ 90° Arm Tenon Adapter for 2 3/8"-3" O.D. Tenon Square Pole  
CA43RXX= Single Arm Tenon Adapter for 2 3/8"-3" O.D. Tenon Round Pole  
CA44RXX= 2 @ 90° Arm Tenon Adapter for 2 3/8"-3" O.D. Tenon Round Pole  
CA45RXX= 2 @ 180° Arm Tenon Adapter for 2 3/8"-3" O.D. Tenon Round Pole  
CA46RXX= 4 @ 90° Arm Tenon Adapter for 2 3/8"-3" O.D. Tenon Round Pole  
CA47RXX= 3 @ 120° Arm Tenon Adapter for 2 3/8"-3" O.D. Tenon Round Pole  
CA9005XX= Adjustable Filter, FAS5 Required (fits 2 3/8" O.D. Vertical Tenon)  
MA1055= House Side Shield<sup>13</sup>  
CA18= House Side Shield<sup>14</sup>  
OA/RA1010= NEMA Twistlock Photocontrol - Multi-Tap  
OA/RA1027= NEMA Twistlock Photocontrol - 480V  
OA1046= 120V Button Photocontrol for Field Installation  
OA1047= 208/240V Button Photocontrol for Field Installation  
OA1048= 277V Button Photocontrol for Field Installation

STOCK SAMPLE NUMBER (Lamp included):

SAMPLE NUMBER: CAL-400-MH-ST-2/3F-AI-BZ

**CAL** **MH** **AI** **BZ**

**Product Family**<sup>1</sup>  
CAL=Concourse III

**Lamp Wattage**  
250=250W  
400=400W

**Lamp Type**  
MH=Metal Halide

**Voltage**<sup>2</sup>  
MT=Multi-Tap  
Wired  
277V  
5T=5-Tap  
Wired  
277V

**Distribution**  
2/3F=Type II/III Formed  
4F=Type IV Formed

**Mounting Method**  
AI=Arm Included<sup>3</sup>

**Color**  
BZ=Bronze

NOTES (stock): 1 Stock product comes standard with lamp. Other options not available with stock products. Refer to standard ordering information. 2 AI only available with 250W, 5T only available with 400W. 3 CA42 included - Arm and 3 1/2"-4" round pole adapter.

# McGRAW-EDISON®

## DESCRIPTION

The McGraw-Edison Concourse III is the most versatile, functionally designed, universally adaptable outdoor lighting luminaire available. Through a variety of mounting styles, it offers a family of low profile sharp-cutoff luminaires that make optimum use of today's high output HID sources.

Enhancing natural landscapes as well as cityscapes, the Concourse III brings outstanding performance and style to walkways, parking lots, roadways, loading docks, building areas, and any security lighting application. U.L. listed and CSA certified for wet locations.

## SPECIFICATION FEATURES

### A ... Latches

Two spring-steel quick release latches on housing for toolless entry.

### B ... Socket

Porcelain mogul-base screw shell type lamp socket with spring-loaded center contact.

### C ... Housing

One-piece, die-cast aluminum housing features aesthetically pleasing soft-corner design.

### D ... Gasketing

Closed cell gas-filled high temperature silicone gasketing completely seals optical system from dirt, bugs or other foreign material.

### E ... Lens

Thermal shock- and impact resistant clear tempered glass.

### F ... Optics

Optional high efficiency segmented or hydroformed reflectors available in a range of distributions. Reflector modules attach to the housing. All reflectors are field rotatable in 90° increments.(5)

### G ... Mounting

Universal mounting clamp concealed in housing fits 1 1/2" to 2 3/8" O.D. horizontal tenons without adapters. Provides a +5° vertical leveling adjustment. All mounting option includes arm and round pole adapter with the fixture for single carton shipment.

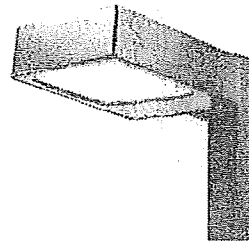
### H ... Ballast

Easily removable high power factor HID multi-tap ballast is standard.

### J ... Hinges

Integral hinges prevent door rocking and optimize sealing capabilities.

Catalog #	CAL-250-MH-120-3F- BK-HS-MA1055	Type	B
Project	EMIL ST RETAIL	Date	
Comments			
Prepared by	TIM CRUM		11-12-12

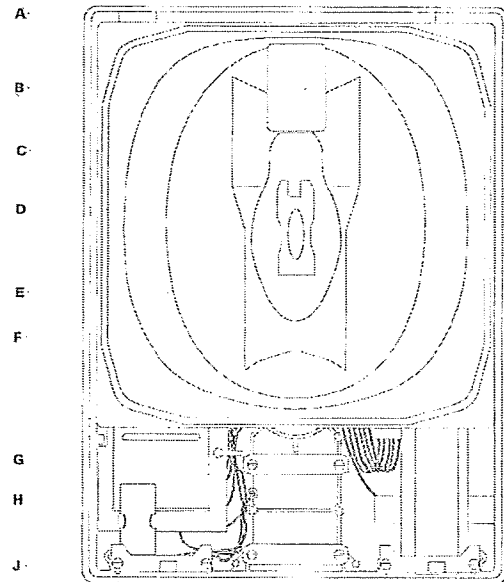


## CAL CONCOURSE III

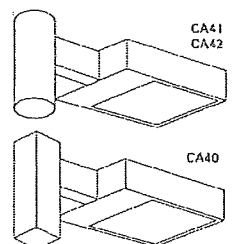
70 - 400W  
High Pressure Sodium  
Metal Halide

ARCHITECTURAL  
AREA LUMINAIRE

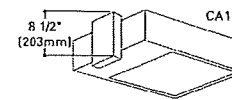
DARK SKY  
COMPLIANT FCO  
Full Cutoff



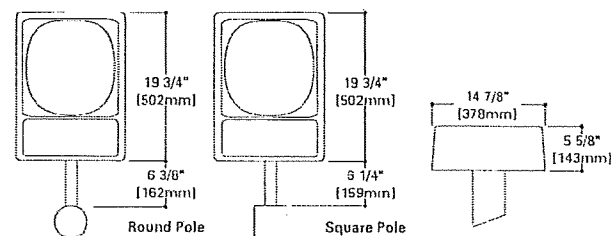
### DIRECT ARM MOUNTINGS



### WALL MOUNT ADAPTER



## DIMENSIONS



### ENERGY DATA

Hi-Reactance Ballast Input Watts  
 70W HPS HPF (95 Watts)  
 70W MH HPF (94 Watts)  
 100W HPS HPF (130 Watts)  
 100W MH HPF (129 Watts)  
 CWA Ballast Input Watts  
 150W MH HPF (210 Watts)  
 175W MH HPF (210 Watts)  
 250W HPS HPF (300 Watts)  
 250W MH HPF (295 Watts)  
 400W HPS HPF (465 Watts)  
 400W MH HPF (455 Watts)

### EPA

Effective Projected Area: 0.9

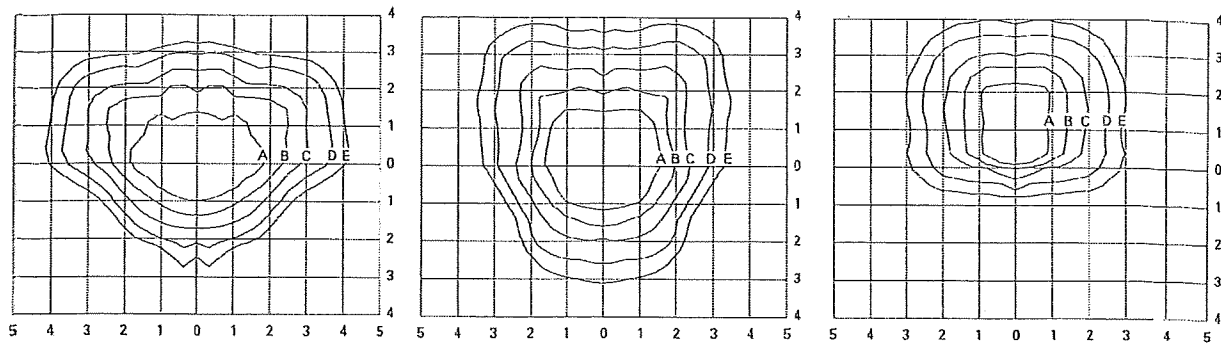
### SHIPPING DATA

Approximate Net Weight:  
39 lbs. (18 kgs.)



ADH060022  
03/20/2007 1:34:12 PM

PHOTOMETRICS



**CAL-400-MH-MT-3S**  
400-Watt MH Type III Segmented  
40,000-Lumen Clear Lamp

**CAL-400-MH-MT-4S**  
400-Watt MH Type IV Segmented  
40,000-Lumen Clear Lamp

**CAL-400-MH-MT-SL**  
400-Watt MH Forward Throw Spill Light Eliminator  
40,000-Lumen Clear Lamp

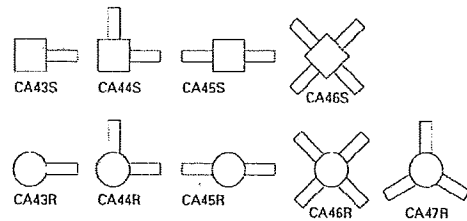
**Footcandle Table**

Select mounting height and read across for footcandle values of each isofootcandle line. Distance in units of mounting height.

Mounting Height	Footcandle Values for Isofootcandle Lines				
	A	B	C	D	E
20'	3.00	1.50	0.75	0.30	0.15
25'	2.00	1.00	0.50	0.20	0.10
30'	1.38	0.69	0.34	0.13	0.06

**Top Mounting for Square and Round Poles (order separately)**

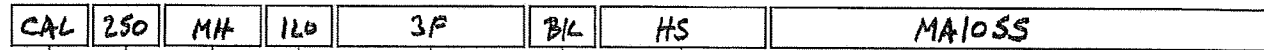
Accommodates 2 3/8"-3" O.D. vertical tenons (arm included). Catalog number includes slipfilter and mounting arms. Square unit height is 6 1/4". Round unit height is 6 3/4".



Catalog Number	E.P.A.	Wt. ( lbs.)
CA43S	1.2	39
CA44S	2.3	75
CA45S	2.3	75
CA46S	2.3	146
CA43R	1.2	39
CA44R	2.3	75
CA45R	2.3	75
CA46R	2.3	145
CA47R	2.4	111

ORDERING INFORMATION

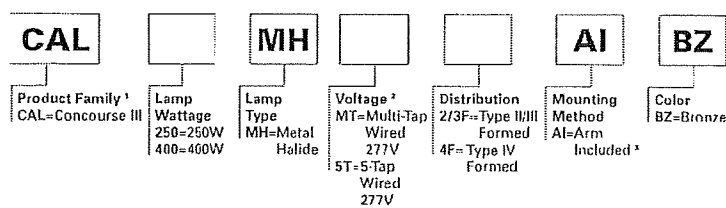
Sample Number: CAL-400-MH-MT-SL-BZ



<b>Product Family</b> CAL=Concourse III <sup>1</sup>	<b>Lamp Type</b> MH= Metal Halide HPS= High Pressure Sodium	<b>Distribution</b> 2F= Design 20 Formed 2S= Type II Segmented 3F= Design 30 Formed 3S= Type III Segmented 4F= Design 40 Formed 4S= Type IV Segmented <sup>5</sup> 5F= Design 50 Formed 5S= Type V Segmented SL= Spill Light Eliminator	<b>Color</b> <sup>6</sup> AP= Grey BZ= Bronze BK= Black WH= White DP= Dark Platinum GM= Graphite Metallic	<b>Accessories</b> <sup>12</sup> CA14XX= Wall Mount Adapter CA40XX= Direct Arm Mount for Square Pole (EPA 0.2) CA41XX= Direct Arm Mount for 3" O.D. Round Pole (EPA 0.2) CA42XX= Direct Arm Mount for 3 1/2"-4" O.D. Round Pole (EPA 0.2) CA43SXX= Single Arm Tenon Adapter for 2 3/8"-3" O.D. Tenon Square Pole CA44SXX= 2 @ 90° Arm Tenon Adapter for 2 3/8"-3" O.D. Tenon Square Pole CA45SXX= 2 @ 180° Arm Tenon Adapter for 2 3/8"-3" O.D. Tenon Square Pole CA46SXX= 4 @ 90° Arm Tenon Adapter for 2 3/8"-3" O.D. Tenon Square Pole CA47SXX= 3 @ 90° Arm Tenon Adapter for 2 3/8"-3" O.D. Tenon Square Pole CA43RXX= Single Arm Tenon Adapter for 2 3/8"-3" O.D. Tenon Round Pole CA44RXX= 2 @ 90° Arm Tenon Adapter for 2 3/8"-3" O.D. Tenon Round Pole CA45RXX= 2 @ 180° Arm Tenon Adapter for 2 3/8"-3" O.D. Tenon Round Pole CA46RXX= 4 @ 90° Arm Tenon Adapter for 2 3/8"-3" O.D. Tenon Round Pole CA47RXX= 3 @ 120° Arm Tenon Adapter for 2 3/8"-3" O.D. Tenon Round Pole CA9005XX= Adjustable Filter, FA55 Required (fits 2 3/8" O.D. Vertical Tenon) MA1055= House Side Shield <sup>13</sup> CA18= House Side Shield <sup>14</sup> OARA1016= NEMA Twistlock Photocontrol - Multi-Tap OARA1027= NEMA Twistlock Photocontrol - 480V DA1046= 120V Button Photocontrol for Field Installation OA1047= 208/240V Button Photocontrol for Field Installation OA1048= 277V Button Photocontrol for Field Installation
<b>Lamp Wattage</b> 70= 70W 100= 100W 150= 150W 175= 175W 250= 250W 400= 400W <sup>2</sup>	<b>Voltage</b> <sup>3</sup> 120= 120V 208= 208V 240= 240V 277= 277V 480= 480V MT= Multi-Tap <sup>4</sup> TT= Triple-Tap <sup>4</sup>	<b>Options</b> <sup>7</sup> AI= Arm Included <sup>8</sup> F= Single Fuse (120, 277 or 347V) FF= Double Fuse (208, 240 or 480V) P= Button Type Photocontrol (Specify Voltage) Q= Quartz Restrike (Hot restrike <sup>9, 10</sup> only) R= NEMA Twistlock Photocontrol Receptacle V= Vandal Shield HS= House Side Shield <sup>11</sup> L= Lamp Included		

STOCK SAMPLE NUMBER (Lamp included):

SAMPLE NUMBER: CAL-400-MH-5T-2/3F-AI-BZ

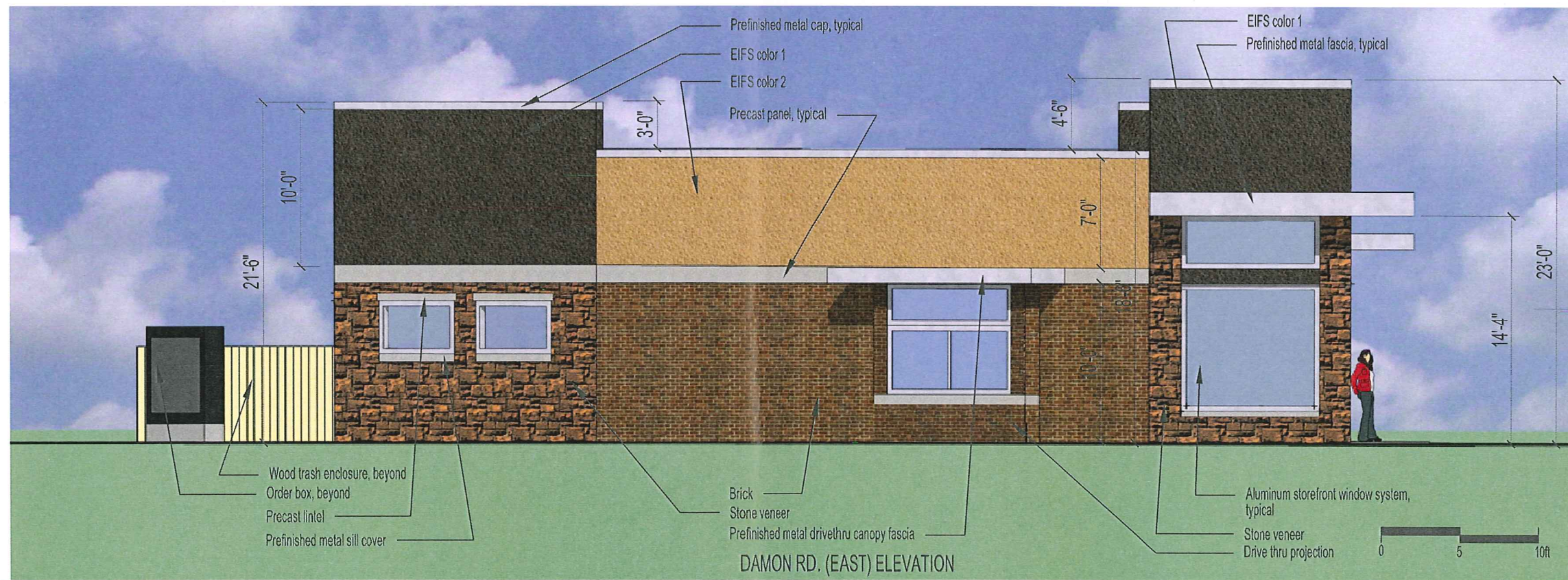


NOTES (stock): 1 Stock product comes standard with lamp. Other options not available with stock products. Refer to standard ordering information. 2 MT only available with 250W, 5T only available with 400W. 3 CA42 included - Arm and 3 1/2"-4" round pole adapter. 4 AI= Arm Included.





EMIL ST. (NORTH) ELEVATION



DAMON RD. (EAST) ELEVATION



