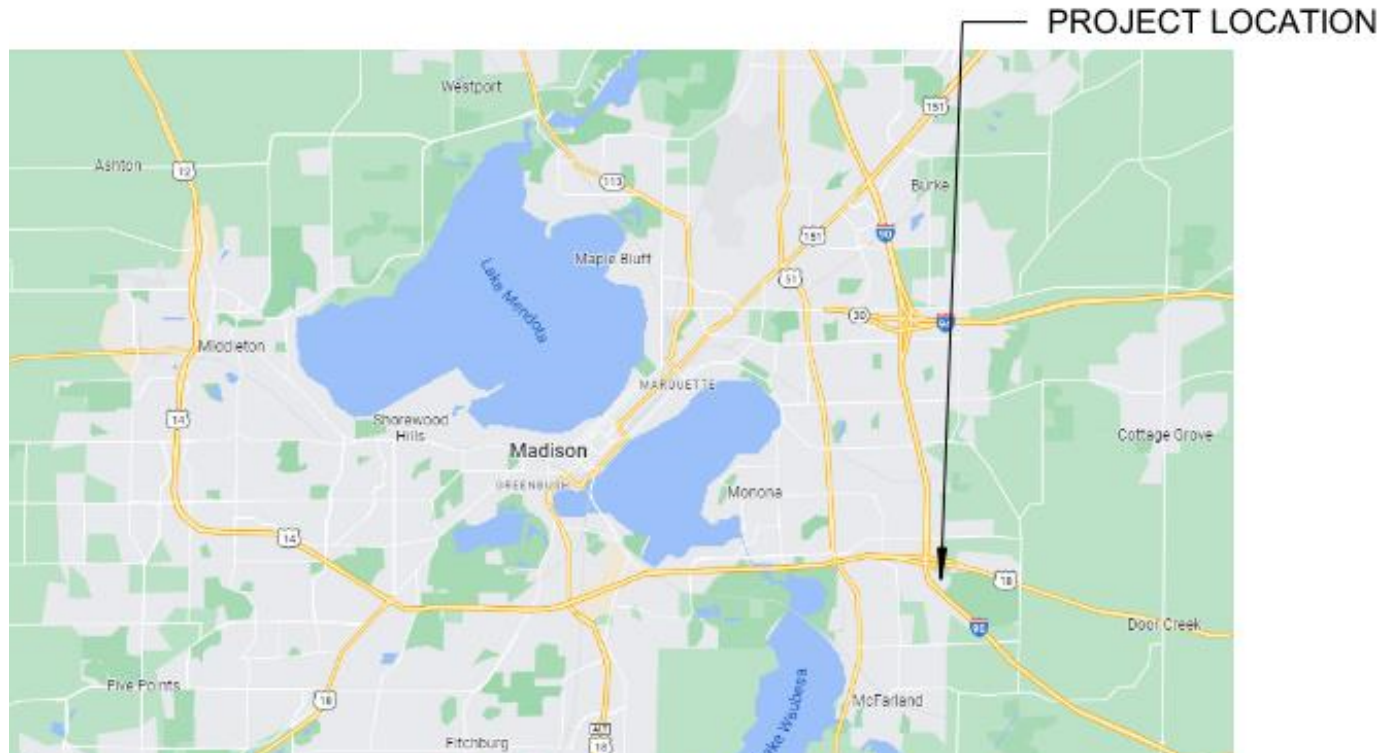


SYNBIOTIC

4725 TRADEWINDS PARKWAY MADISON, WI 53718





Beltline Highway

Tradewinds Parkway

PROJECT SITE

IKM SITE

USH 51 (S. Stoughton Road)

F. Broadway Service Rd

W. Beltline Hwy
S. Stoughton Rd. WB
S. Stoughton Rd. WB-W. Beltline Hwy. EB On

Gallop Run

Jason Dr

Tradewinds Pkwy

Agriport





Context Photos – Tradewinds Pkwy



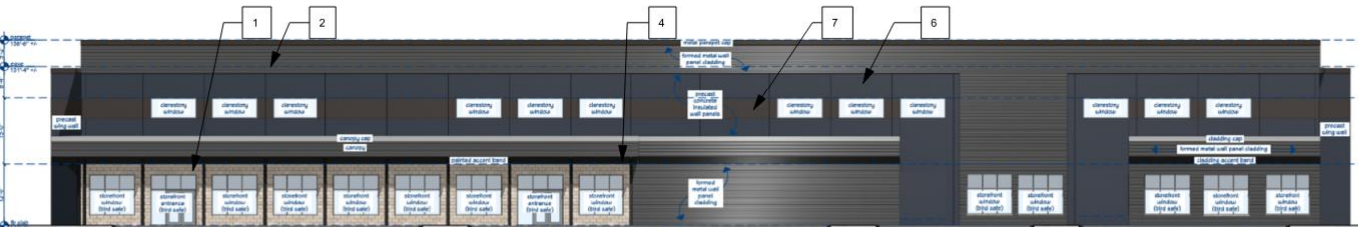
Existing - 4725 Tradewinds Pkwy



Existing - 4725 Tradewinds Pkwy



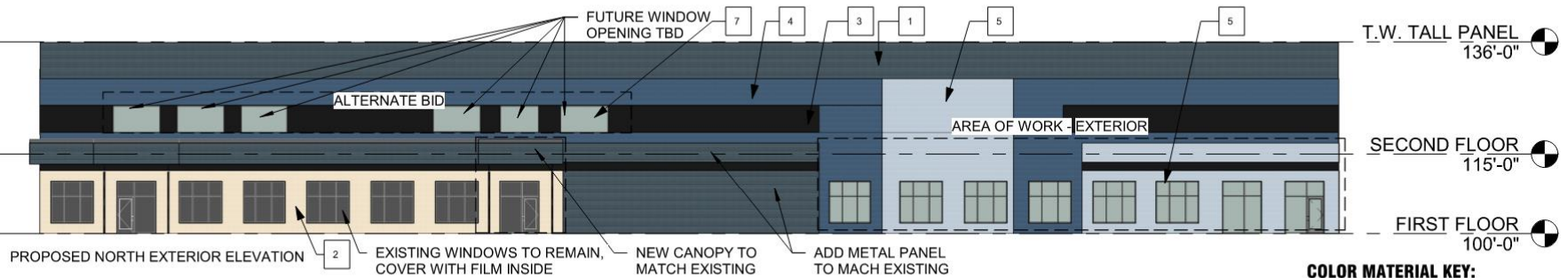
AS BUILD NORTH EXTERIOR ELEVATION



APPROVED NORTH EXTERIOR ELEVATION

WALL PANEL PAINT KEY

- 1 ADHERED MASONRY VENEER
- 2 FORMED METAL WALL PANEL
- 3 PRECAST CONCRETE PANEL FIELD COLOR #1 (LIGHT GREY)
- 4 PRECAST CONCRETE PANEL ACCENT COLOR #2 (BLACK)
- 5 PRECAST CONCRETE PANEL ACCENT COLOR #3 (BUFF)
- 6 PRECAST CONCRETE PANEL ACCENT COLOR #4 (BLUE)
- 7 PRECAST CONCRETE PANEL ACCENT COLOR #5 (BRONZE)



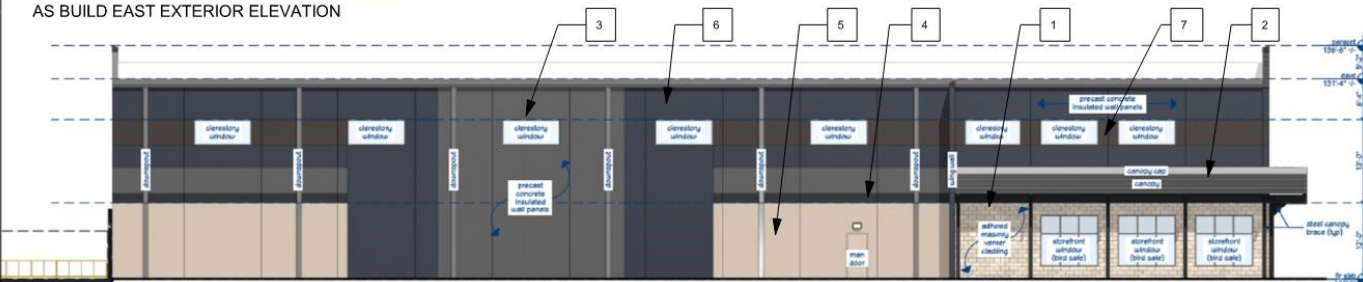
PROPOSED NORTH EXTERIOR ELEVATION

COLOR MATERIAL KEY:

- 1 FORMED METAL PANEL
- 2 PRECAST CONCRETE COLOR #1 (BUFF)
- 3 PRECAST CONCRETE COLOR #2 (BLACK)
- 4 PRECAST CONCRETE COLOR #3 (DARK BLUE)
- 5 PRECAST CONCRETE COLOR #4 (LIGHT BLUE)
- 6 CLEAR ANODIZED ALUMINUM FRAMED
- 7 CLEAR ANODIZED ALUMINUM FRAMED GLAZING SYSTEM



AS BUILD EAST EXTERIOR ELEVATION



WALL PANEL PAINT KEY

1	ADHERED MASONRY VENEER
2	FORMED METAL WALL PANEL
3	PRECAST CONCRETE PANEL FIELD COLOR #1 (LIGHT GREY)
4	PRECAST CONCRETE PANEL ACCENT COLOR #2 (BLACK)
5	PRECAST CONCRETE PANEL ACCENT COLOR #3 (BUFF)
6	PRECAST CONCRETE PANEL ACCENT COLOR #4 (BLUE)
7	PRECAST CONCRETE PANEL ACCENT COLOR #5 (BRONZE)

APPROVED EAST EXTERIOR ELEVATION



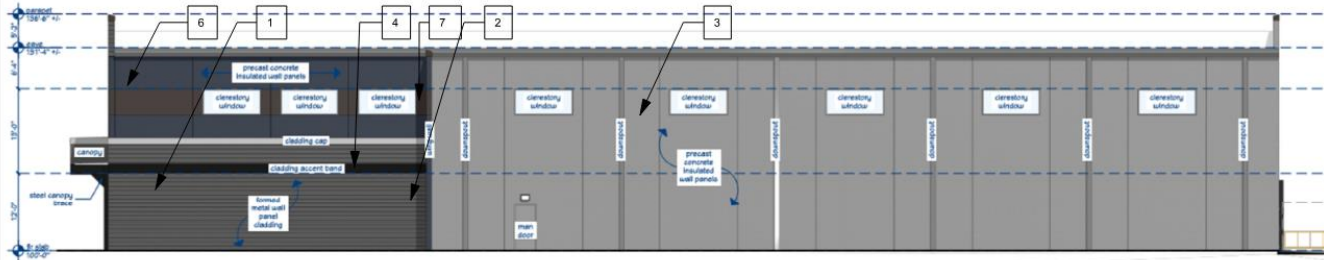
COLOR MATERIAL KEY:

1	FORMED METAL PANEL
2	PRECAST CONCRETE COLOR #1 (BUFF)
3	PRECAST CONCRETE COLOR #2 (BLACK)
4	PRECAST CONCRETE COLOR #3 (DARK BL)
5	PRECAST CONCRETE COLOR #4 (LIGHT BL)
6	CLEAR ANODIZED ALUMINUM FRAMED
7	CLEAR ANODIZED ALUMINUM FRAMED GLAZING SYSTEM

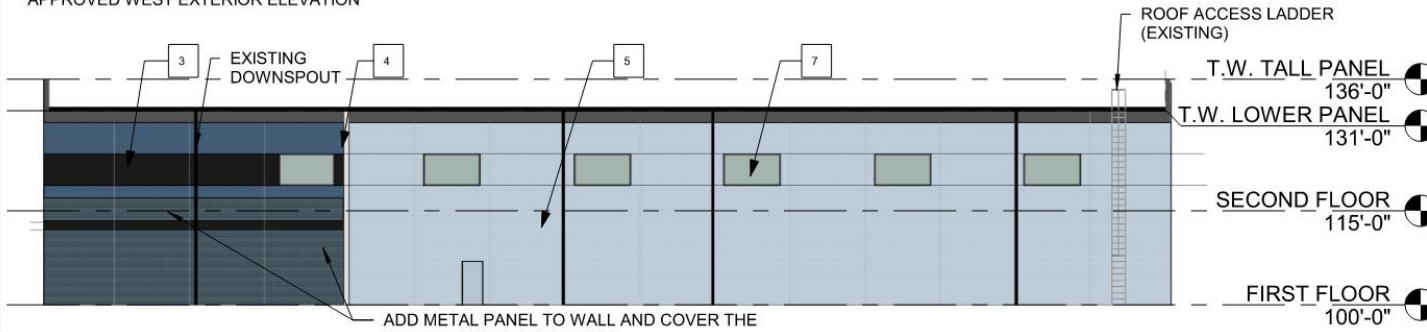
PROPOSED EAST EXTERIOR ELEVATION



AS BUILD WEST EXTERIOR ELEVATION



APPROVED WEST EXTERIOR ELEVATION



PROPOSED WEST EXTERIOR ELEVATION

WALL PANEL PAINT KEY

- 1  ADHERED MASONRY VENEER
- 2  FORMED METAL WALL PANEL
- 3  PRECAST CONCRETE PANEL FIELD COLOR #1 (LIGHT GREY)
- 4  PRECAST CONCRETE PANEL ACCENT COLOR #2 (BLACK)
- 5  PRECAST CONCRETE PANEL ACCENT COLOR #3 (BUFF)
- 6  PRECAST CONCRETE PANEL ACCENT COLOR #4 (BLUE)
- 7  PRECAST CONCRETE PANEL ACCENT COLOR #5 (BRONZE)

COLOR MATERIAL KEY:

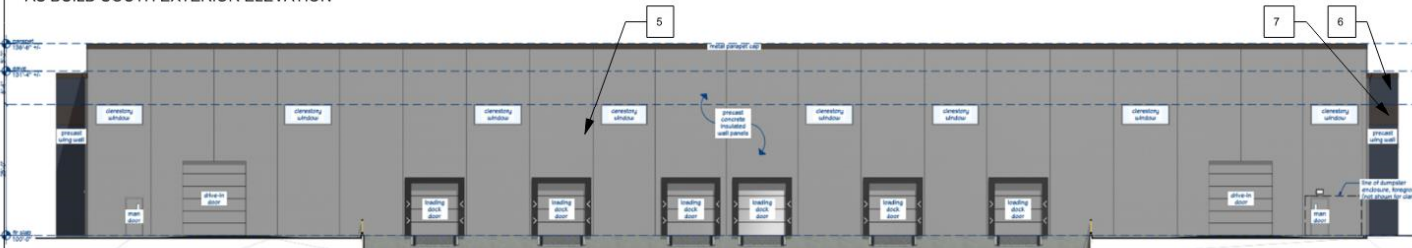
- 1  FORMED METAL PANEL
- 2  PRECAST CONCRETE COLOR #1 (BUFF)
- 3  PRECAST CONCRETE COLOR #2 (BLACK)
- 4  PRECAST CONCRETE COLOR #3 (DARK BLUE)
- 5  PRECAST CONCRETE COLOR #4 (LIGHT BLUE)
- 6  CLEAR ANODIZED ALUMINUM FRAMED
- 7  CLEAR ANODIZED ALUMINUM FRAMED GLAZING SYSTEM



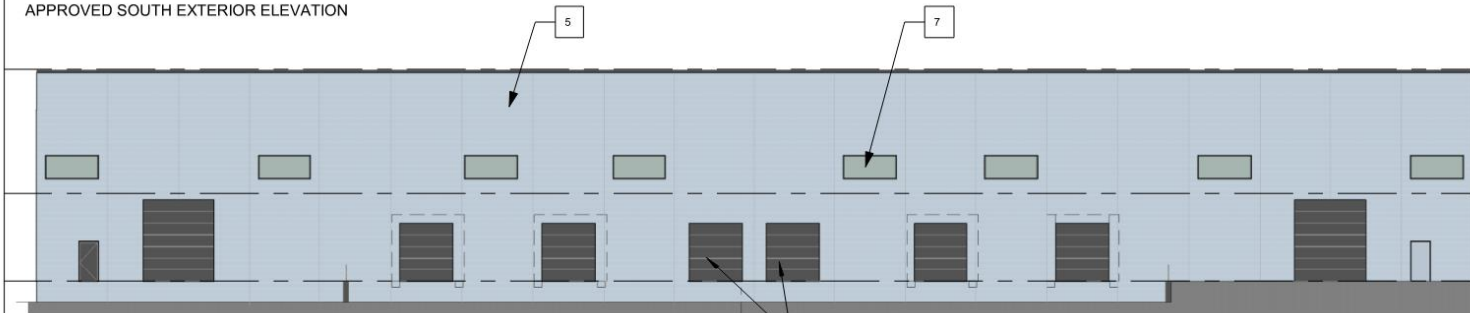
AS BUILD SOUTH EXTERIOR ELEVATION

WALL PANEL PAINT KEY

- 1 ADHERED MASONRY VENEER
- 2 FORMED METAL WALL PANEL
- 3 PRECAST CONCRETE PANEL FIELD COLOR #1 (LIGHT GREY)
- 4 PRECAST CONCRETE PANEL ACCENT COLOR #2 (BLACK)
- 5 PRECAST CONCRETE PANEL ACCENT COLOR #3 (BUFF)
- 6 PRECAST CONCRETE PANEL ACCENT COLOR #4 (BLUE)
- 7 PRECAST CONCRETE PANEL ACCENT COLOR #5 (BRONZE)



APPROVED SOUTH EXTERIOR ELEVATION



PROPOSED SOUTH EXTERIOR ELEVATION

PAINT EXISTING DOOR BLACK TO MATCH COLOR DOCK DOORS

T.W. TALL PANEL 136'-0"

SECOND FLOOR 115'-0"

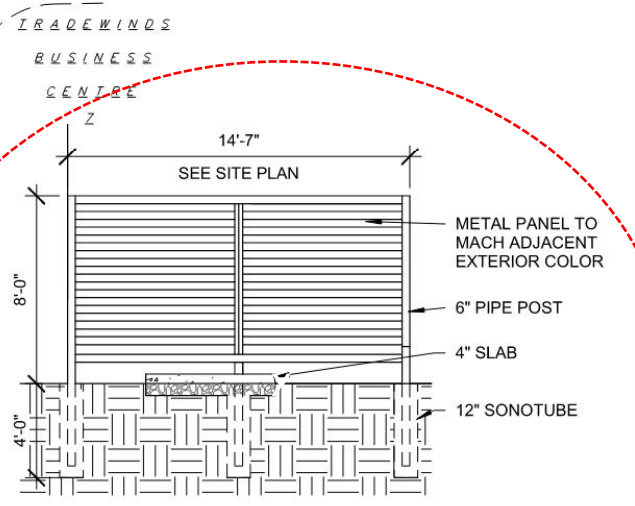
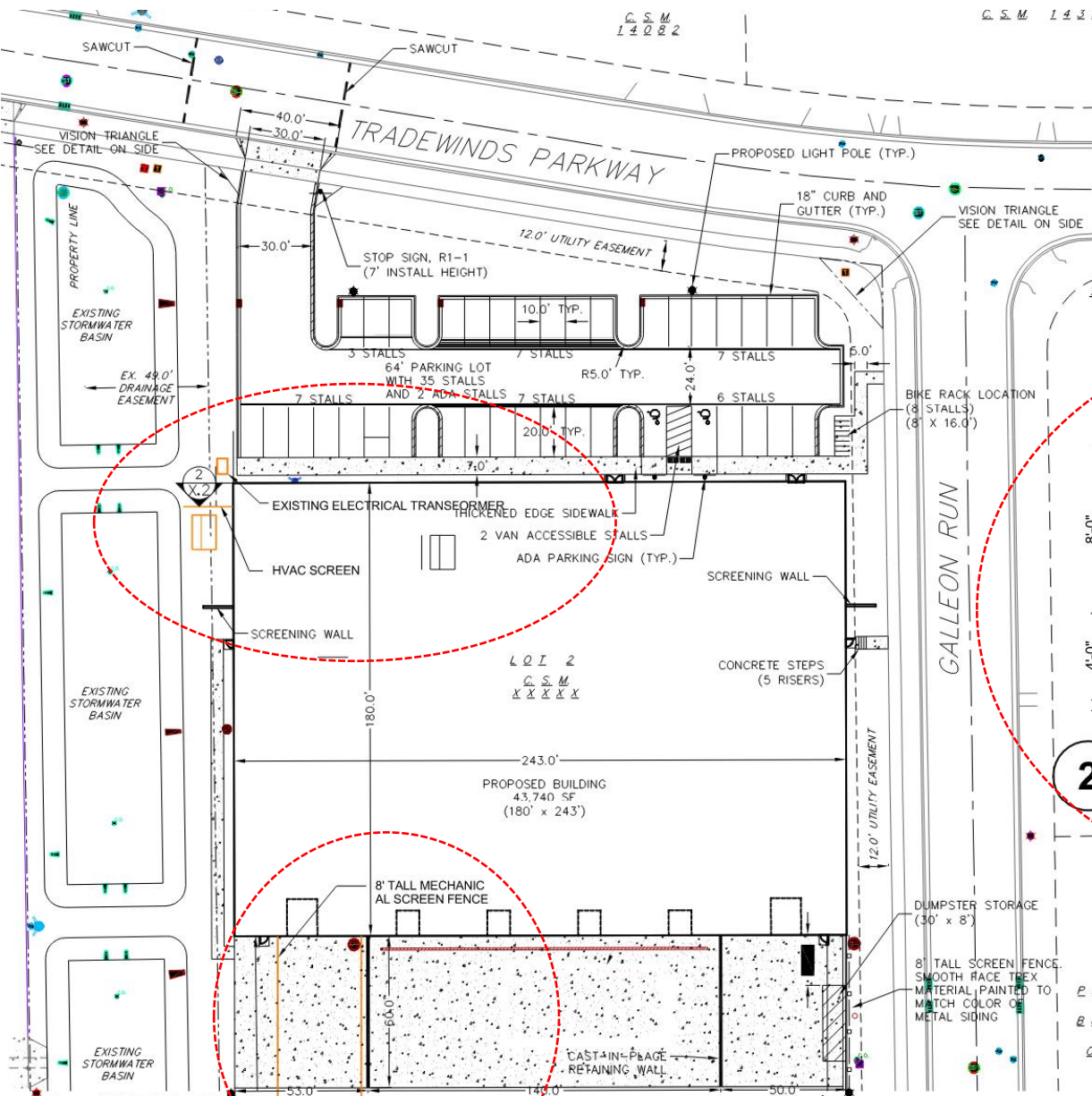
FIRST FLOOR 100'-0"

COLOR MATERIAL KEY:

- 1 FORMED METAL PANEL
- 2 PRECAST CONCRETE COLOR #1 (BUFF)
- 3 PRECAST CONCRETE COLOR #2 (BLACK)
- 4 PRECAST CONCRETE COLOR #3 (DARK BLUE)
- 5 PRECAST CONCRETE COLOR #4 (LIGHT BLUE)
- 6 CLEAR ANODIZED ALUMINUM FRAMED
- 7 CLEAR ANODIZED ALUMINUM FRAMED GLAZING SYSTEM

C.S.M
14082

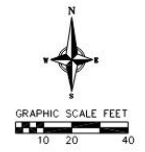
C.S.M 14410

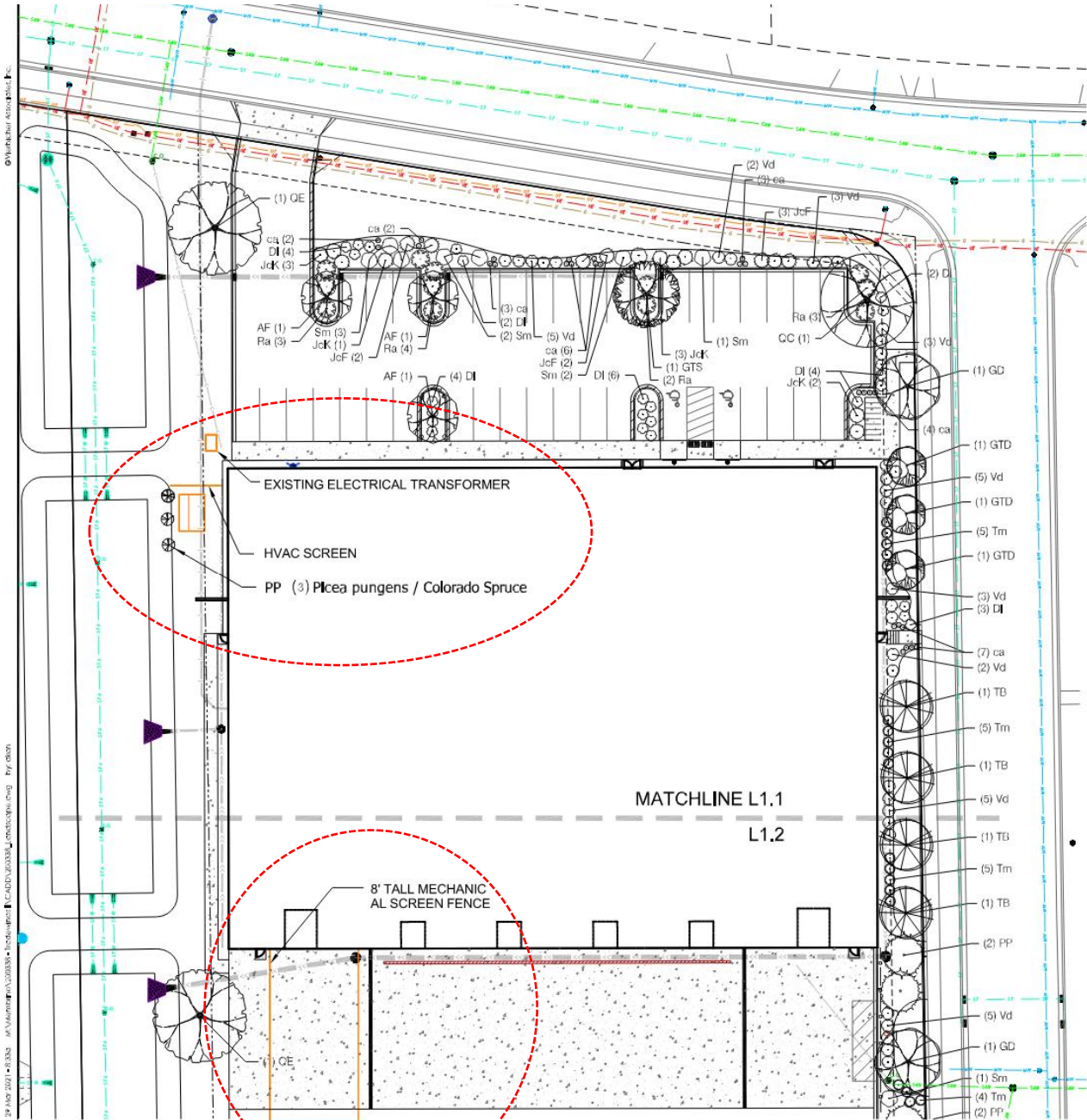


2 FENCE ELEVATION DETAIL
3/16" = 1'-0"

1 SITE PLAN
1" = 40'-0"

TRADEWINDS
BUSINESS
CENTRE





PLANT SCHEDULE

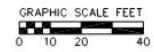
DECIDUOUS TREES	BOTANICAL / COMMON NAME
AF	<i>Acer x freemanii</i> / Ed Gartner / Ed Gartner Freeman Maple
GTD	<i>Quercus laevis</i> / Swamp / Street Keeper / Honey Locust
GTS	<i>Quercus macrocarpa</i> / Swamp / Street Keeper / Honey Locust
GD	<i>Quercus macrocarpa</i> / Swamp / Street Keeper / Honey Locust
OE	<i>Quercus macrocarpa</i> / Swamp / Street Keeper / Honey Locust
CC	<i>Quercus macrocarpa</i> / Swamp / Street Keeper / Honey Locust
TB	<i>Thuja occidentalis</i> / Boulevard / Boulevard American Linden

EVERGREEN TREES	BOTANICAL / COMMON NAME
PP	<i>Picea pungens</i> / Colorado Spruce
PS	<i>Pinus strobus</i> / White Pine

DECIDUOUS SHRUBS	BOTANICAL / COMMON NAME
DI	<i>Diervilla lonicera</i> / Dwarf Bush / Honeysuckle
Ra	<i>Rhus aromatica</i> / Gro-Low / Gro-Low Fragrant Sumac
Sm	<i>Syringa meyeri</i> / Dwarf / Dwarf Korean Lilac
Vd	<i>Viburnum dentatum</i> / Viburnum / Viburnum

EVERGREEN SHRUBS	BOTANICAL / COMMON NAME
JcK	<i>Juniperus chinensis</i> / Compact / Compact Juniper
JcK	<i>Juniperus chinensis</i> / Compact / Compact Juniper
Tm	<i>Taxus x media</i> / Eve-Low / Eve-Low Yew

PERENNIALS	BOTANICAL / COMMON NAME
ca	<i>Calluna vulgaris</i> / Heather / Heather



29 AUG 2011 8:30 AM Member 03/20/09 12:40:00 PM C:\ADD\30333\30333.dwg Pfl.dwg