



# Imagination Center at Reindahl Park

## Board Of Park Commissioners Update

Madison Public Library  
Parks Division  
Information Technology Department

July 13, 2022



# Project Information

<b>Name</b>	Imagination Center at Reindahl Park
<b>Project Type</b>	City Facility
<b>City Agencies</b>	Madison Public Library, Parks Division, and Information Technology Department
<b>Location</b>	<i>1818 Portage Road Madison, WI 53704</i>
<b>Aldermanic District</b>	District 12 (previously District 17)
<b>Status</b>	Schematic Design

# Project Information – Progress to date

## 2014 – 2016 Eastside Strategic Plan

- Library staff spends two years conducting research and outreach to develop the eastside strategic plan. Library staff uses Tell Us: Cuéntenos, an innovative public engagement program, to collect, develop, and record the results of community conversations.
- In 2016, The Library Board and the Common Council adopt Communities Inspiring Libraries: A Strategic Plan for Eastside Growth, which contains the primary recommendation of building the Imagination Center at Reindahl Park.

## 2018 – 2020 Imagination Center Scoping Study

- The Library starts the planning process for the Imagination Center Scoping Study.
- Library staff identifies stakeholders and hosts community conversations throughout Madison around the Imagination Center project. Library staff conducts demographic and service research.
- In 2020 The Library Board and Board of Park Commissioners adopts the Imagination Center Scoping Study (3/11/2020) and directs next steps on design, development, and funding.

## 2020 - 2022 Site and Building Predesign phase

- The City advertises a Request for Proposal (RFP) for Design Services from an Architect/Engineer team.
- After a 4 month process, JLA Architects is awarded a contract
- Predesign begins in April, 2021 and was completed in February, 2022

# Project Information – Site selection (2014-2016)

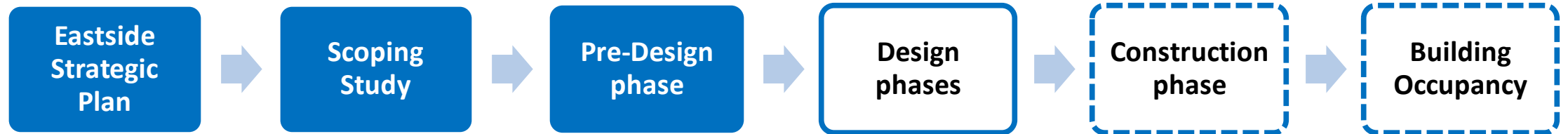
## COMMUNITIES INSPIRING LIBRARIES

A Strategic Plan for Eastside Growth (2016)

1. **Reindahl/Portage: Score 46/55**
2. **East Towne Mall: Score 40/55**
3. **Reiner Road: Score 31/55**
4. **Grandview Commons: Score 25/55**



# Project Information – Milestone timeline



A photograph of a park scene with a child swinging on a swing set in the foreground. In the background, several other people, including children and adults, are engaged in various activities on a grassy area. The scene is set under large, leafy trees. The text is overlaid on the image in a large, white, sans-serif font.

# THE IMAGINATION CENTER AT REINDAHL PARK

## DESIGN UPDATE

# Pre-Design: Vision



## A DYNAMIC FRAMEWORK THAT CELEBRATES HUMANITY



We will deliver an adaptable framework that offers a backdrop for cultural vitality and civic joy. The Imagination Center will provide environments for community members to thrive. The site will be continuously re-imagined with community members and community partners

## THE LAND TELLS A STORY



The design will honor the histories and stories of this land, acknowledging the Ho-Chunk Nation who had originally settled in the community. Land development will be generative. We will nurture the current strengths of the landscape, developing it to be a healthier natural and indigenous ecosystem for future generations.

## OFFERING EMPATHY, EQUITY, AND RESILIENCY



Design and experiences will be driven by community members' hopes, dreams, aspirations, and potential. All members of our community will have access to the resources they need to flourish through the support we offer at the Imagination Center.

## LOVE, RISK, JOY, ENGAGEMENT & REFLECTION



The values of Anji Play will be implemented in the design. Environments will foster the cycles that lead to self-determination. We will demonstrate to our community members how this continuous learning process can be incorporated into their daily lives.

## HEALTH & WEALTH CREATION



The Imagination Center will provide programs and services to foster economic opportunity and social justice for our residents.

## COMMUNITY WILL CREATE THEIR STORIES



The Imagination Center will facilitate storytelling and story creation. With a commitment to literacy development for all styles of learners, members of the community will have access to experts, places, and resources to amplify their voices and develop skills for self-expression. We will celebrate and showcase our community's stories!

## COMMUNITY WILL CREATE FUTURES TOGETHER



The community will enjoy an adaptable ever-evolving design to forge cultural vitality, designed to foster inclusivity, social connections, and social trust. We will provide places for community members to advocate, organize, express themselves, and be agents of their preferred futures.

## CULTIVATION, CONNECTION & ACTIVATION



As stewards of the Imagination Center, we will ensure that the activation of the site serves a public good through all of Madison's seasons. We will cultivate and connect our community members to experiences in service to their interests, passions, and ambitions

# Pre-Design: Program and Adjacency

PARK PAVILION

LIBRARY PROGRAM

EXTERIOR SPACES

### 3.3 ENUMERATED PROGRAM

Imagination Center at Reindahl Park Proposed Program						
Area/Space	Qty	Space	Number of Occupants	ASHP/Person	ASHP	Total ASHP Area/Space
<b>Interiors</b>						
1	1	Reception	100		100	
2	1	Exterior Pick-Up Location				100
3	1	Conference/Community Room (2000 sq ft)				1000
4	1	Storage Room	2	2000	2000	
5	1	Book Shelving		1000	1000	
6	1	General Book Return (adjacent to exterior wall)		20	20	
7	1	Reading Computers		15	15	
8	1	Self-Checkout/Checkouts		20	20	
9	1	Book Carts and Bins		10	10	
10	1	Program Space		10	10	
11	1	Community Room Map		10	10	
12	1	Community Room/Media/Classroom	4	100	400	
13	1	Popular Materials		100	100	
14	1	Storage		100	100	
<b>Exteriors</b>						
15	1	Outdoor Plaza				1000
16	1	Outdoor Plaza	10	100	1000	
17	1	Outdoor Plaza				100
18	1	Community/Intergenerational Living Room	20	100	2000	
19	1	Community/Intergenerational Living Room				1000
20	1	Community/Intergenerational Living Room				1000
21	1	Community/Intergenerational Living Room				1000
22	1	Community/Intergenerational Living Room				1000
23	1	Community/Intergenerational Living Room				1000
24	1	Community/Intergenerational Living Room				1000
25	1	Community/Intergenerational Living Room				1000
26	1	Community/Intergenerational Living Room				1000
27	1	Community/Intergenerational Living Room				1000
28	1	Community/Intergenerational Living Room				1000
29	1	Community/Intergenerational Living Room				1000
30	1	Community/Intergenerational Living Room				1000
31	1	Community/Intergenerational Living Room				1000
32	1	Community/Intergenerational Living Room				1000
33	1	Community/Intergenerational Living Room				1000
34	1	Community/Intergenerational Living Room				1000
35	1	Community/Intergenerational Living Room				1000
36	1	Community/Intergenerational Living Room				1000
37	1	Community/Intergenerational Living Room				1000
38	1	Community/Intergenerational Living Room				1000
39	1	Community/Intergenerational Living Room				1000
40	1	Community/Intergenerational Living Room				1000
41	1	Community/Intergenerational Living Room				1000
42	1	Community/Intergenerational Living Room				1000
43	1	Community/Intergenerational Living Room				1000
44	1	Community/Intergenerational Living Room				1000
45	1	Community/Intergenerational Living Room				1000
46	1	Community/Intergenerational Living Room				1000
47	1	Community/Intergenerational Living Room				1000
48	1	Community/Intergenerational Living Room				1000
49	1	Community/Intergenerational Living Room				1000
50	1	Community/Intergenerational Living Room				1000
51	1	Community/Intergenerational Living Room				1000
52	1	Community/Intergenerational Living Room				1000
53	1	Community/Intergenerational Living Room				1000
54	1	Community/Intergenerational Living Room				1000
55	1	Community/Intergenerational Living Room				1000
56	1	Community/Intergenerational Living Room				1000
57	1	Community/Intergenerational Living Room				1000
58	1	Community/Intergenerational Living Room				1000
59	1	Community/Intergenerational Living Room				1000
60	1	Community/Intergenerational Living Room				1000
61	1	Community/Intergenerational Living Room				1000
62	1	Community/Intergenerational Living Room				1000
63	1	Community/Intergenerational Living Room				1000
64	1	Community/Intergenerational Living Room				1000
65	1	Community/Intergenerational Living Room				1000
66	1	Community/Intergenerational Living Room				1000
67	1	Community/Intergenerational Living Room				1000
68	1	Community/Intergenerational Living Room				1000
69	1	Community/Intergenerational Living Room				1000
70	1	Community/Intergenerational Living Room				1000
71	1	Community/Intergenerational Living Room				1000
72	1	Community/Intergenerational Living Room				1000
73	1	Community/Intergenerational Living Room				1000
74	1	Community/Intergenerational Living Room				1000
75	1	Community/Intergenerational Living Room				1000
76	1	Community/Intergenerational Living Room				1000
77	1	Community/Intergenerational Living Room				1000
78	1	Community/Intergenerational Living Room				1000
79	1	Community/Intergenerational Living Room				1000
80	1	Community/Intergenerational Living Room				1000
81	1	Community/Intergenerational Living Room				1000
82	1	Community/Intergenerational Living Room				1000
83	1	Community/Intergenerational Living Room				1000
84	1	Community/Intergenerational Living Room				1000
85	1	Community/Intergenerational Living Room				1000
86	1	Community/Intergenerational Living Room				1000
87	1	Community/Intergenerational Living Room				1000
88	1	Community/Intergenerational Living Room				1000
89	1	Community/Intergenerational Living Room				1000
90	1	Community/Intergenerational Living Room				1000
91	1	Community/Intergenerational Living Room				1000
92	1	Community/Intergenerational Living Room				1000
93	1	Community/Intergenerational Living Room				1000
94	1	Community/Intergenerational Living Room				1000
95	1	Community/Intergenerational Living Room				1000
96	1	Community/Intergenerational Living Room				1000
97	1	Community/Intergenerational Living Room				1000
98	1	Community/Intergenerational Living Room				1000
99	1	Community/Intergenerational Living Room				1000
100	1	Community/Intergenerational Living Room				1000





# Pre-Design: site constraints

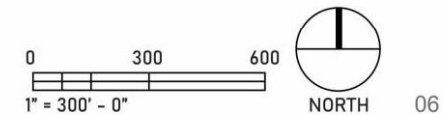


## LEGEND

- Existing Structures to Remain
- Existing Interior Parking Lots to Remain
- Existing Activity Areas to Remain
- Future or Re-purposed Features
- Existing Shelter Parking Lot to Re-purpose
- Existing Wooded Area
- Future Internal Road From Parking Lot
- Future Internal Road to Community Gardens
- Existing Interior Roads
- Ex. 42" MMSD Northeast Interceptor Line (50' Easement)
- Existing Well And 300' Influence Area
- Reindahl Park Border

Ex. 42" MMSD Northeast Interceptor Line (50' Easement)

Note: All uncolored area within park boundary is currently unprogrammed and may be considered developable.

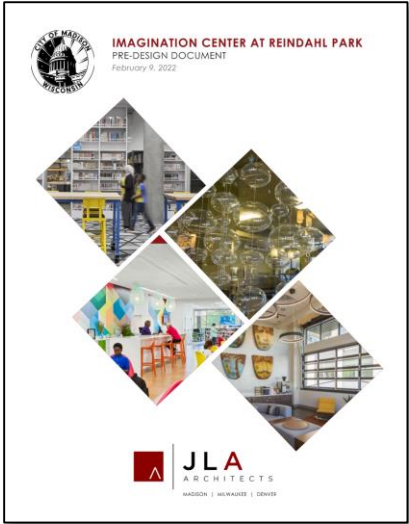


# Pre-Design: project area

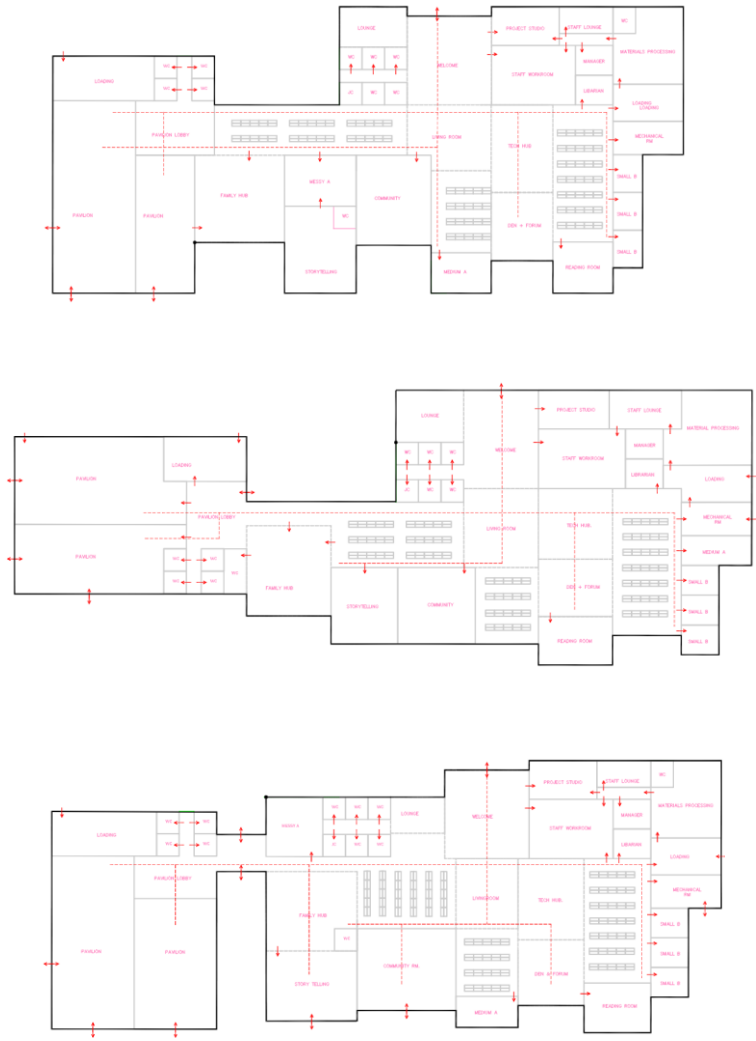
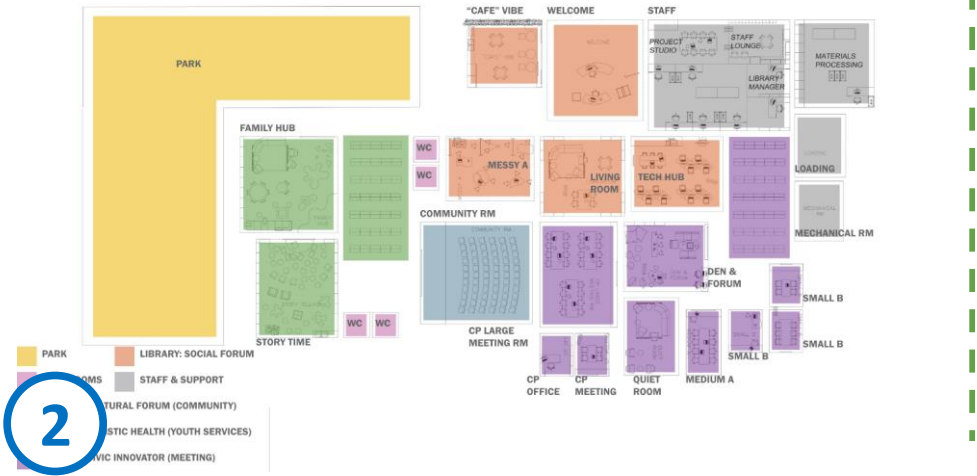
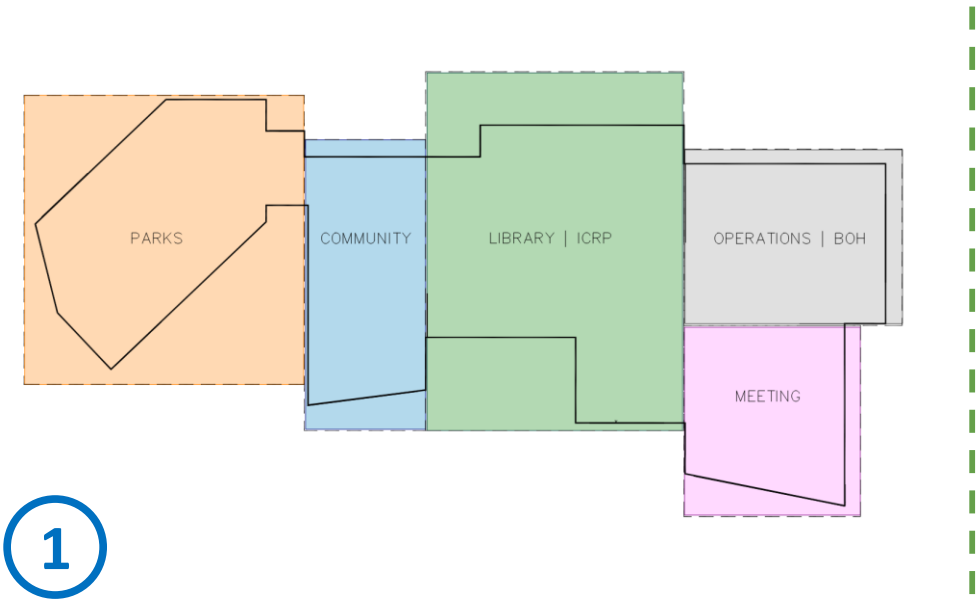




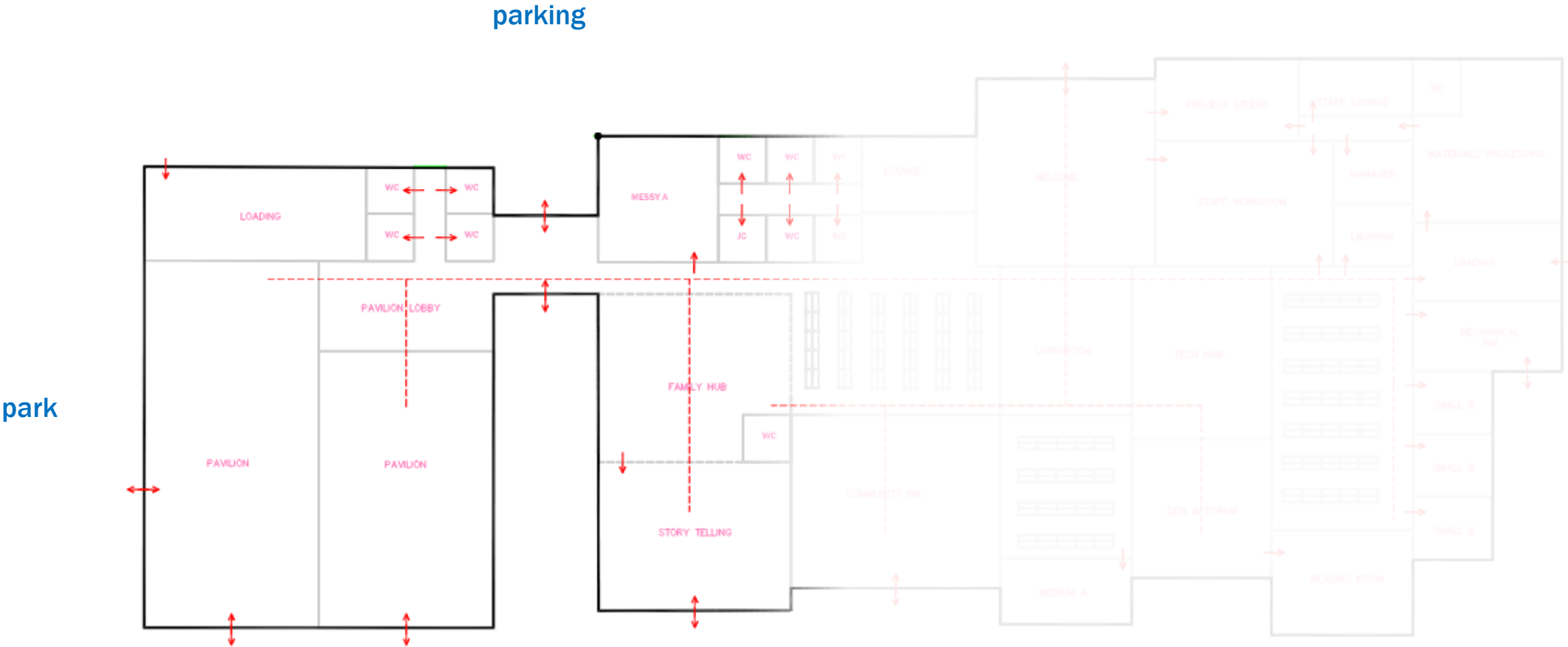
# Pre-Design: completion



# Schematic Design: Iterative design process



# Schematic Design: Pavilion plan



# Next Steps

Pre-Design

Summer 2021 – Winter 2021

**Schematic Design**

**Summer 2022 – Fall 2022**

**Design Development**

Fall 2022 – Spring 2023

**Construction Documents**

Spring 2023 – Summer 2023

**Bidding**

Summer 2023 – Fall 2023

**Construction**

Fall 2023 – Winter 2024

**Opening**

Spring 2025

# Contact Information & Resources

**Contact us at**

[imaginationcenter@madisonpubliclibrary.org](mailto:imaginationcenter@madisonpubliclibrary.org)

## **Resources**

- [Engineering Division Construction Process Webpage](#)
- [Madison Public Library Imagination Center at Reindahl Park Webpage](#)

