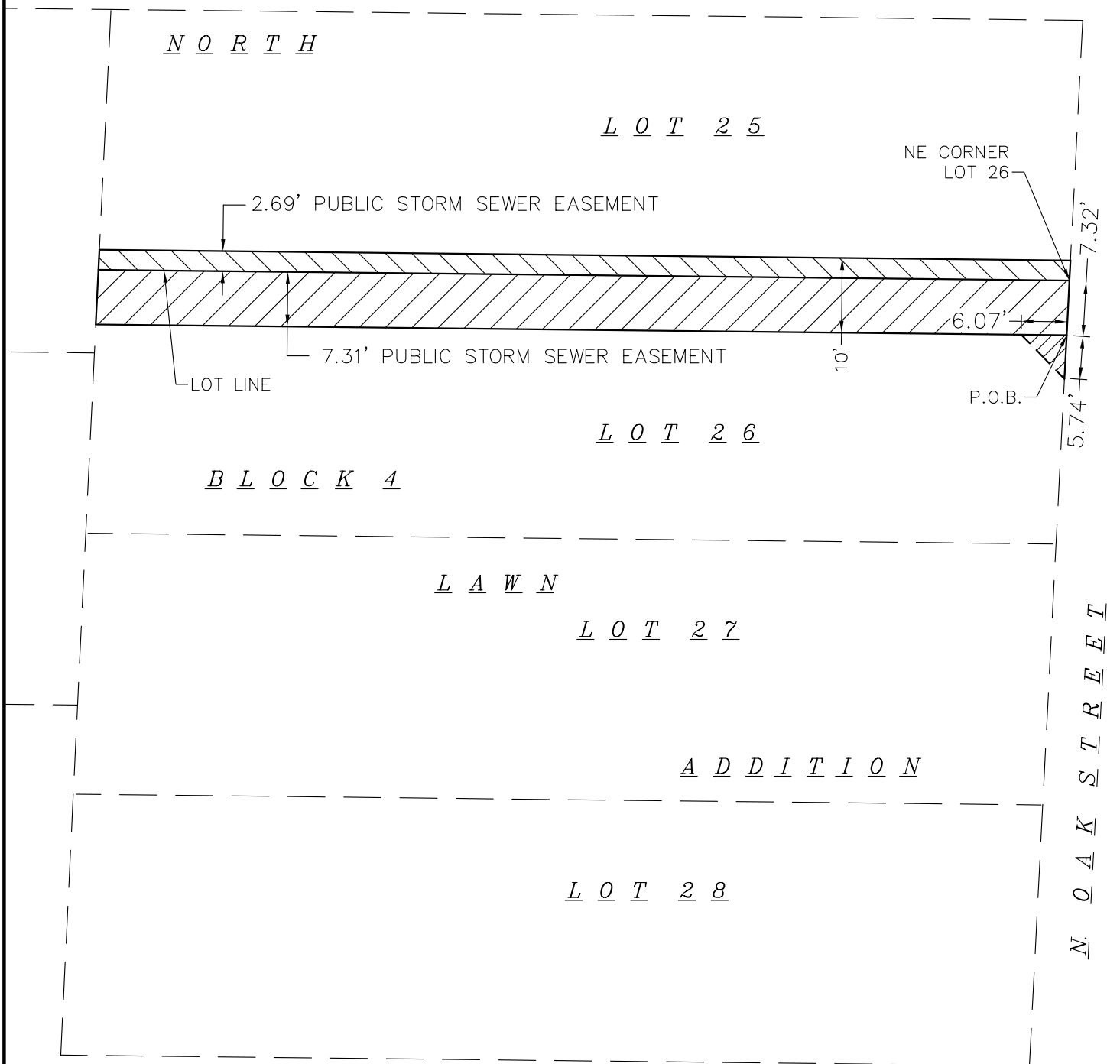


# PUBLIC STORM SEWER EASEMENT

PART OF LOTS 25 AND 26, BLOCK 4, NORTH LAWN ADDITION, ACCORDING TO THE RECORDED PLAT THEREOF, LOCATED IN THE NW 1/4 OF THE NW 1/4 OF SECTION 05, T07N, R10E, CITY OF MADISON, DANE COUNTY, WISCONSIN.



SCALE : ONE INCH = TWENTY FEET



SURVEYED FOR :  
 CITY OF MADISON ENGINEERING DIVISION  
 210 MARTIN LUTHER KING, JR. BVLD.  
 MADISON, WI 53703



## Burse

surveying & engineering Inc.

1400 E. Washington Ave, Suite 158  
 Madison, WI 53703 608.250.9263  
 Fax: 608.250.9266  
 email: burse@chorus.net  
 www.bursesurveyengr.com