

**APPLICATION FOR
URBAN DESIGN COMMISSION
REVIEW AND APPROVAL**

AGENDA ITEM # _____
Project # _____
Legistar # _____

DATE SUBMITTED: <u>November 22, 2011</u>	Action Requested
UDC MEETING DATE: <u>December 7, 2011</u>	<input checked="" type="checkbox"/> Informational Presentation
	<input checked="" type="checkbox"/> Initial Approval and/or Recommendation
	<input type="checkbox"/> Final Approval and/or Recommendation

PLEASE PRINT!

PLEASE PRINT!

PROJECT ADDRESS: 402 South Point Road

ALDERMANIC DISTRICT: 9

OWNER/DEVELOPER (Partners and/or Principals) ARCHITECT/DESIGNER/OR AGENT:
City of Madison Streets-West Side Public Works Angus Young Associates - Jeffrey Hazekamp

Contacts: Jim Whitney, Randy Wiesner, 555 S. River Street
Al Schumacher Janesville, WI 53545

CONTACT PERSON: Brad Werginz - Angus Young Associates

Address: 555 S. River Street
Janesville, WI 53548

Phone: (608) 756-2326

Fax: (608) 756-0464

E-mail address: jeffh@angusyoung.com

TYPE OF PROJECT:

(See Section A for:)

- Planned Unit Development (PUD)
 - General Development Plan (GDP)
 - Specific Implementation Plan (SIP)
- Planned Community Development (PCD)
 - General Development Plan (GDP)
 - Specific Implementation Plan (SIP)
- Planned Residential Development (PRD)
- New Construction or Exterior Remodeling in an Urban Design District * (A public hearing is required as well as a fee)
- School, Public Building or Space (Fee may be required)
- New Construction or Addition to or Remodeling of a Retail, Hotel or Motel Building Exceeding 40,000 Sq. Ft.
- Planned Commercial Site

(See Section B for:)

- New Construction or Exterior Remodeling in C4 District (Fee required)

(See Section C for:)

- R.P.S.M. Parking Variance (Fee required)

(See Section D for:)

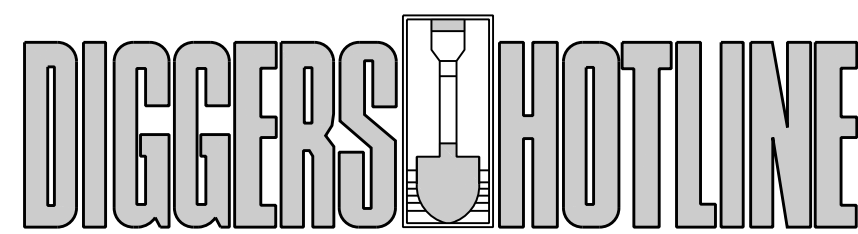
- Comprehensive Design Review* (Fee required)
- Street Graphics Variance* (Fee required)
- Other _____

*Public Hearing Required (Submission Deadline 3 Weeks in Advance of Meeting Date)

Where fees are required (as noted above) they apply with the first submittal for either initial or final approval of a project.

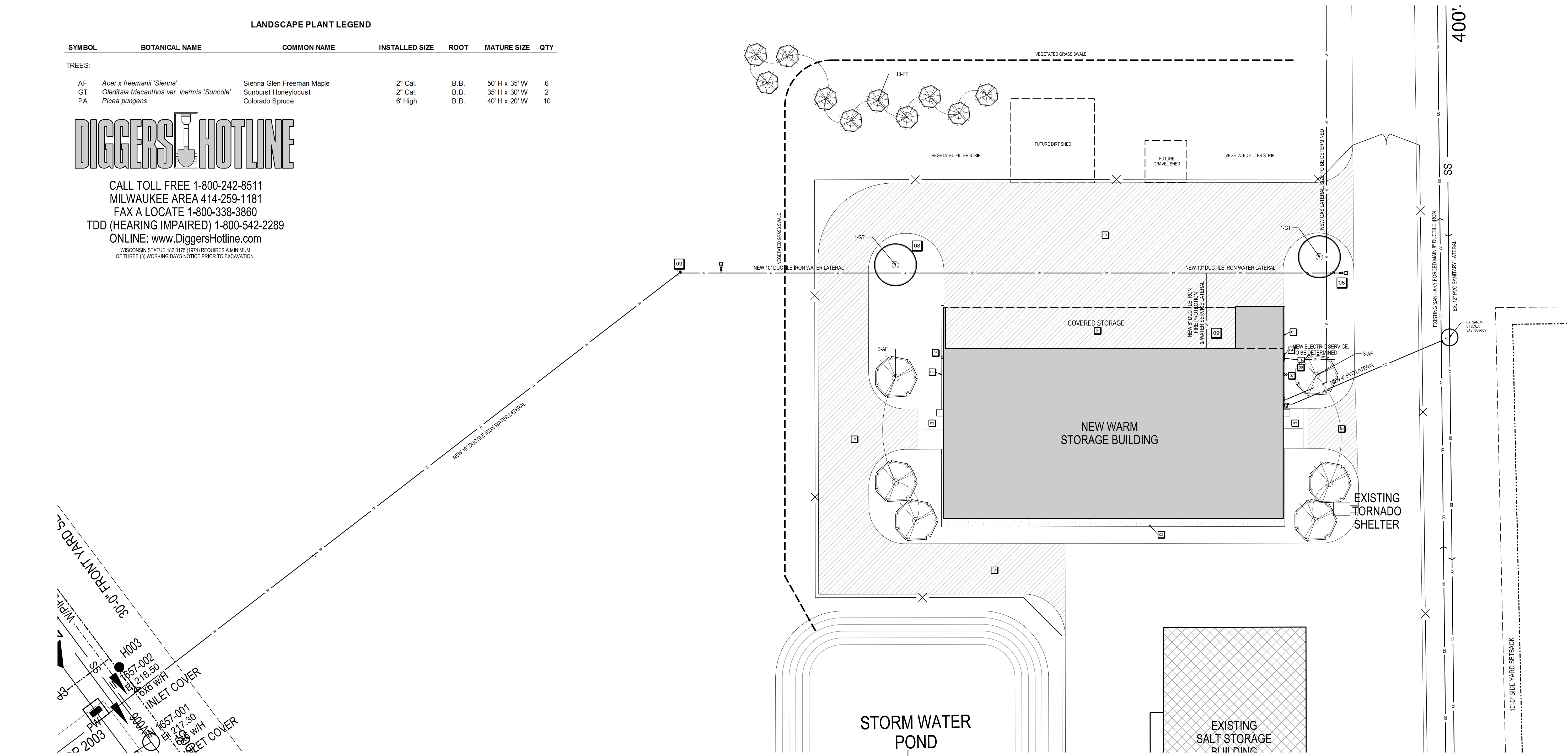
LANDSCAPE PLANT LEGEND

SYMBOL	BOTANICAL NAME	COMMON NAME	INSTALLED SIZE	ROOT	MATURE SIZE	QTY
AF	<i>Acer x freemanii</i> 'Sienna'	Sienna Glen Freeman Maple	2" Cal.	B.B.	50' H x 35' W	6
GT	<i>Gleditsia triacanthos</i> var. <i>inermis</i> 'Suncole'	Sunburst Honeylocust	2" Cal.	B.B.	35' H x 30' W	2
PA	<i>Picea pungens</i>	Colorado Spruce	6" High	B.B.	40' H x 20' W	10

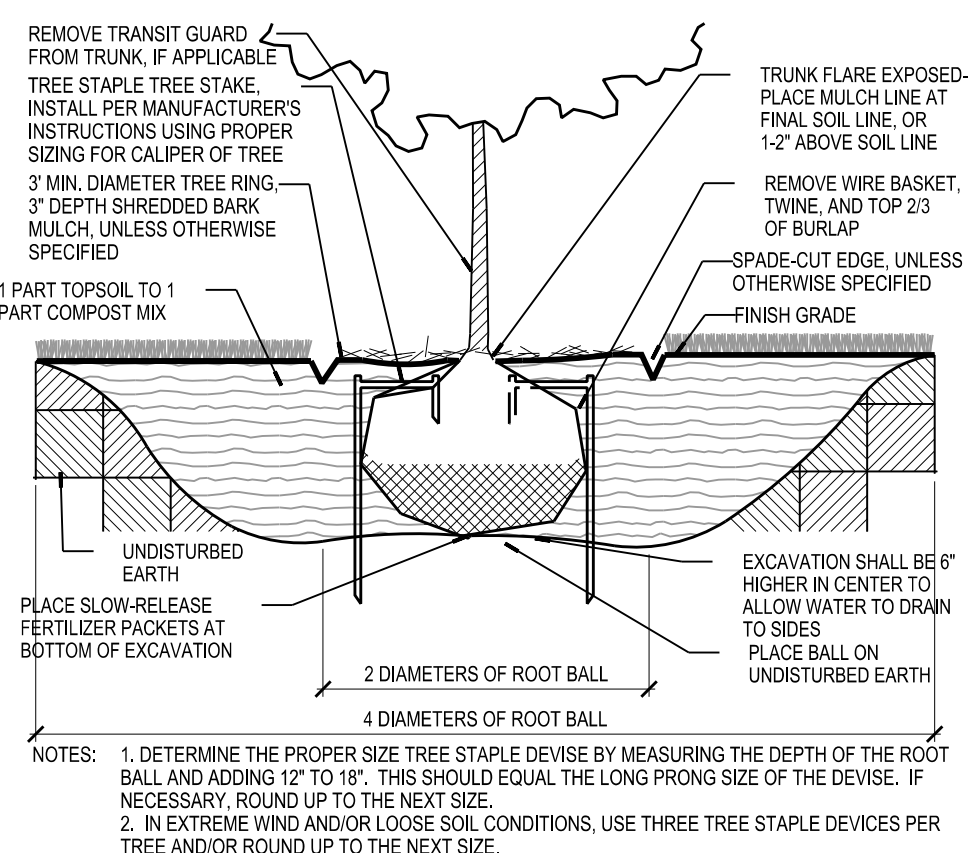
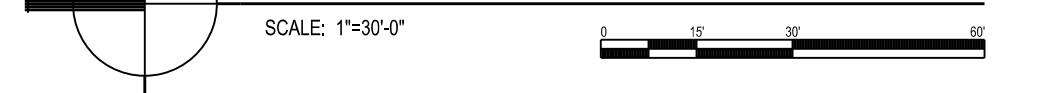


CALL TOLL FREE 1-800-242-8511
 MILWAUKEE AREA 414-259-1181
 FAX A LOCATE 1-800-338-3860
 TDD (HEARING IMPAIRED) 1-800-542-2289
 ONLINE: www.DiggersHotline.com

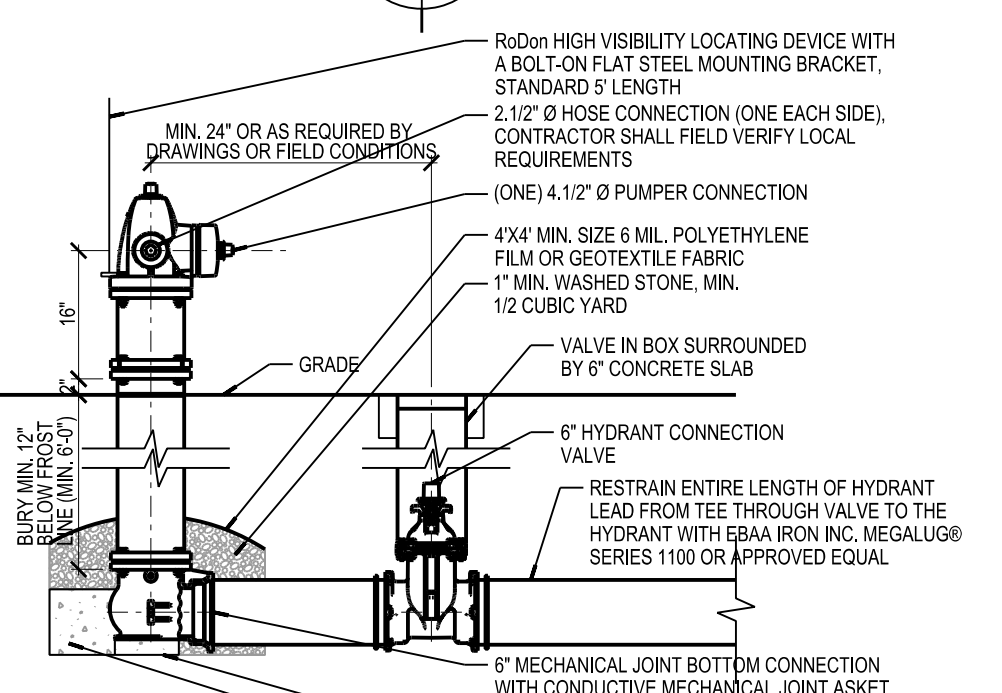
WISCONSIN STATUTE 192.0175 (1974) REQUIRES A MINIMUM OF THREE (3) WORKING DAYS NOTICE PRIOR TO EXCAVATION.



SITE LAYOUT, UTILITY AND LANDSCAPE PLAN



13 B.B. SHRUB AND TREE PLANTING DETAIL
 SCALE: NONE



09 FIRE HYDRANT DETAIL
 SCALE: 1/2"=1'-0"

- KEYNOTES**
- 01 NEW BITUMINOUS PAVEMENT
 - 02 NEW 3" THICK WASHED STONE MULCH STRIP, 5'-0" WIDE ON WEST SIDE AND 12" WIDE ON NORTH AND SOUTH WALLS. PROVIDE WEED BARRIER FABRIC AND BLACK POLY EDGING.
 - 03 NEW CONCRETE APRON
 - 04 NEW ELECTRIC METER
 - 05 NEW GAS METER
 - 06 NEW TRANSFORMER
 - 07 NEW FIRE DEPARTMENT CONNECTION WITH HORN AND STROBE
 - 08 NEW FIRE HYDRANT
 - 09 NEW THRUST BLOCKING, TYPICAL

- GENERAL NOTES**
1. ALL AREAS SHALL BE SEEDED LAWN UNLESS OTHERWISE NOTED.
 2. ALL DECIDUOUS TREES SHALL RECEIVE 4'-0" DIAMETER SHREDDED BARK MULCH TREE RING (3" THICK) WITH SPADE-CUT EDGE.
 3. ALL EVERGREEN TREES SHALL RECEIVE 6'-0" DIAMETER SHREDDED BARK MULCH TREE RING (3" THICK) WITH SPADE-CUT EDGE.
 4. SEE DETAIL 13/C201 FOR TREE PLANTING DETAIL.
 5. CONTRACTOR SHALL VERIFY ALL UTILITIES, ELEVATIONS AND DIMENSIONS.
 6. GAS LATERAL SHALL CONNECT WITH SOUTH POINT MAIN (APPROXIMATELY 975 LINEAR FEET). CONTRACTOR SHALL COORDINATE WITH UTILITY.

SCALE: 1"=30'-0"
 PLOTTED BY: KAMU

ORIGINAL SIZE: 24" x 36"
 X:\4150\camu\1506201.dgn

Due to electronic distribution, this drawing may not be printed to the scale indicated on the drawings. Do NOT use scale to determine dimensions or sizes.

Angus Young
 Architecture
 Engineering
 Interior Design
Balance in Creativity
 555 South River Street, Janesville, WI 53548-4783
 Ph: 608.756.2326 Fax: 608.756.0464
 www.angusyong.com

PROJECT NUMBER: 48150
 APPROVED BY: [Signature]
 REVIEWED BY: [Signature]
 DRAWN BY: KAU
 11/21/2011 2:55:02 PM

ISSUANCES
 REVISIONS

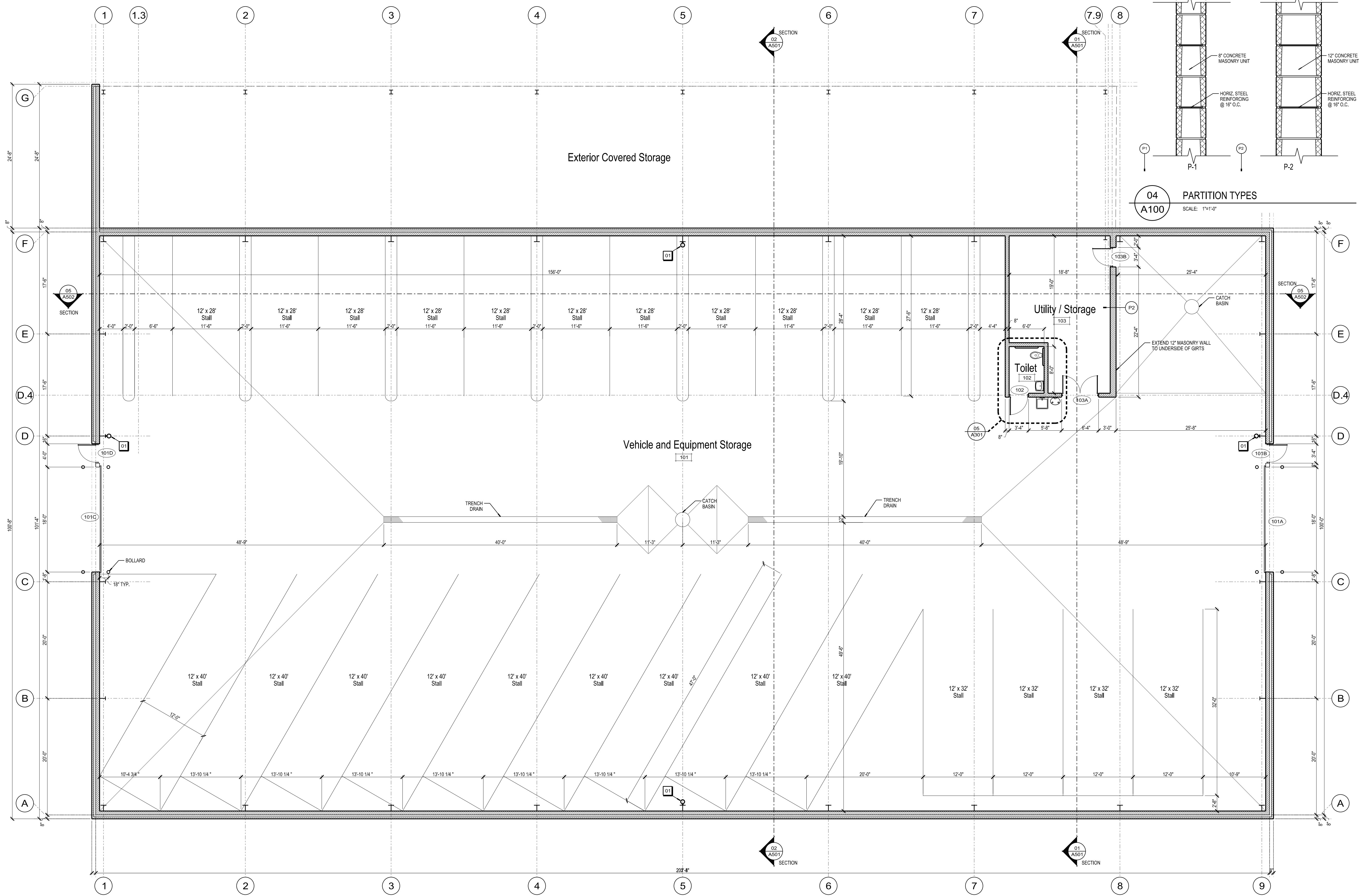
STREETS DEPARTMENT
 NEW WARM STORAGE BUILDING
 CITY OF MADISON
 MADISON, WISCONSIN

Copyright © 2011 Angus-Young Associates, Inc. All Rights Reserved

PRELIMINARY - NOT FOR CONSTRUCTION

C201

ORIGINAL SIZE: 24" x 36"
 X:\4150\4150.dwg
 SCALE: 1/8"=1'-0"
 PLOTTED BY: BAWW



GENERAL NOTES
 1. ALL PARTITIONS ARE TYPE P1 UNLESS NOTED OTHERWISE.
 KEYNOTES
 01 SURFACE MOUNTED FIRE EXTINGUISHER.



Due to electronic distribution, this drawing may not be printed to the scale indicated on the drawings. Do NOT use scale to determine dimensions or sizes.

PROJECT NUMBER: 48150
 APPROVED BY: [Signature]
 REVIEWED BY: [Signature]
 DRAWN BY: BTW
 10/18/2011 9:29:20 AM

ISSUANCES

REVISIONS

Copyright © 2011 Angus-Young Associates, Inc. All Rights Reserved

Angus Young
 Architecture
 Engineering
 Interior Design
Balance in Creativity
 555 South River Street, Janesville, WI 53548-4783
 Ph: 608.756.2326 Fax: 608.756.0454
 www.angusyoung.com

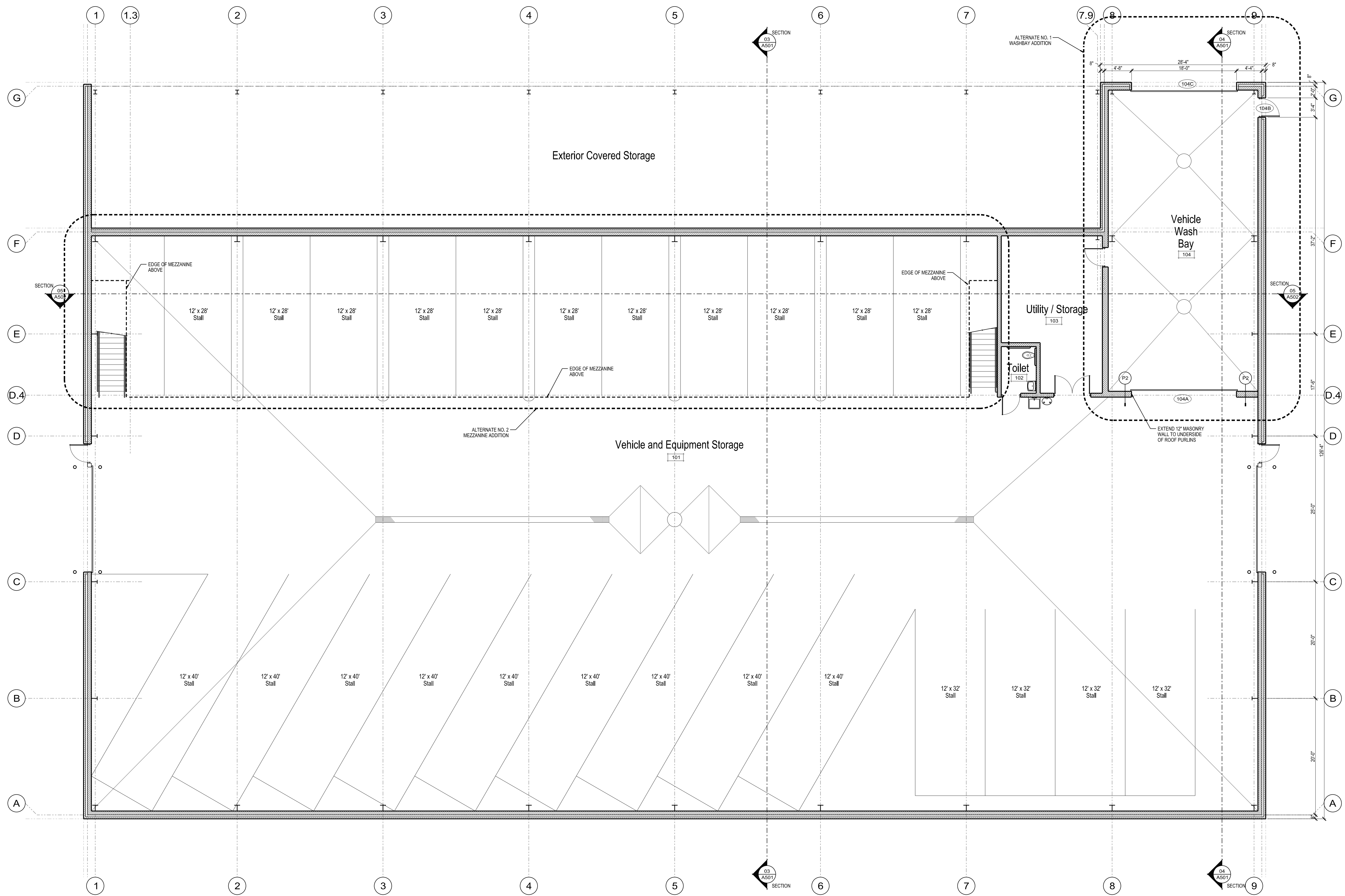
STREETS DEPARTMENT
 NEW WARM STORAGE BUILDING
 CITY OF MADISON
 MADISON, WISCONSIN

WARM STORAGE
 FLOOR PLAN

A100

PRELIMINARY - NOT FOR CONSTRUCTION

ORIGINAL SIZE = 24" x 36"
 X:\4150\4150\4150\4150.dgn
 SCALE: 1/8"=1'-0"
 PLOTTED BY: KAMU



FLOOR PLAN - ALTERNATES
 SCALE: 1/8"=1'-0"

Due to electronic distribution, this drawing may not be printed to the scale indicated on the drawings. Do NOT use scale to determine dimensions or sizes.

ISSUANCES	REVISIONS

Angus Young
 Architecture
 Engineering
 Interior Design
Balance in Creativity
 555 South River Street, Janesville, WI 53548-4783
 Ph: 608.756.2326 Fax: 608.756.0454
 www.angusyoung.com

STREETS DEPARTMENT
NEW WARM STORAGE BUILDING
CITY OF MADISON
MADISON, WISCONSIN

PROJECT NUMBER: 48150
 APPROVED BY: _____
 REVIEWED BY: _____
 DRAWN BY: JLH
 11/21/2011 1:33:46 PM

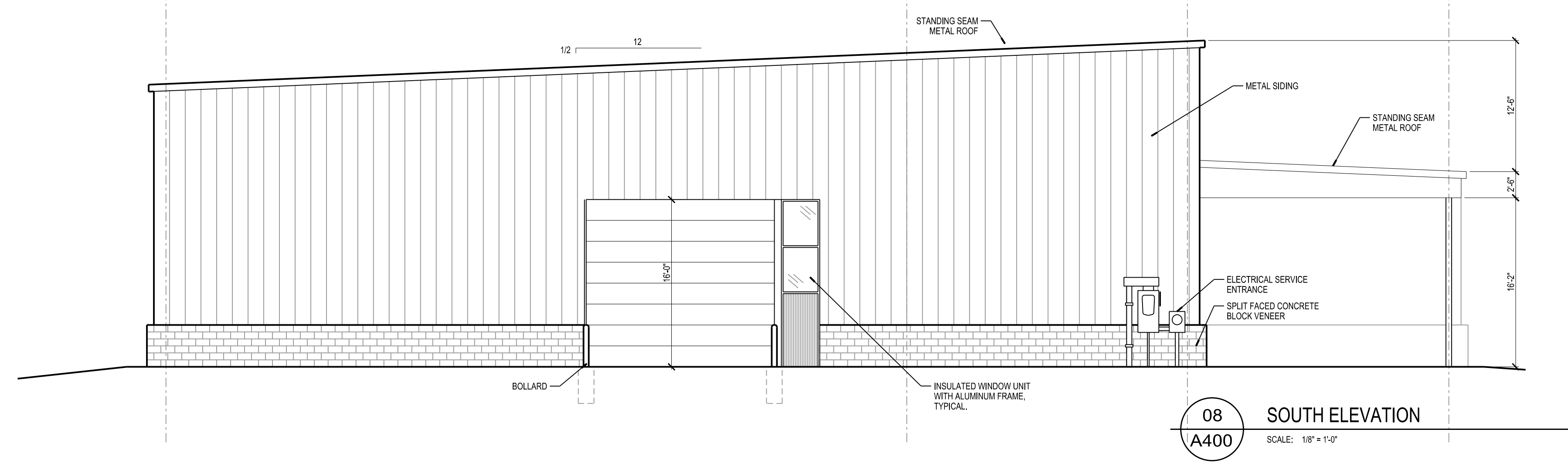
WARM STORAGE
 FLOOR PLAN
 ALTERNATES

A101

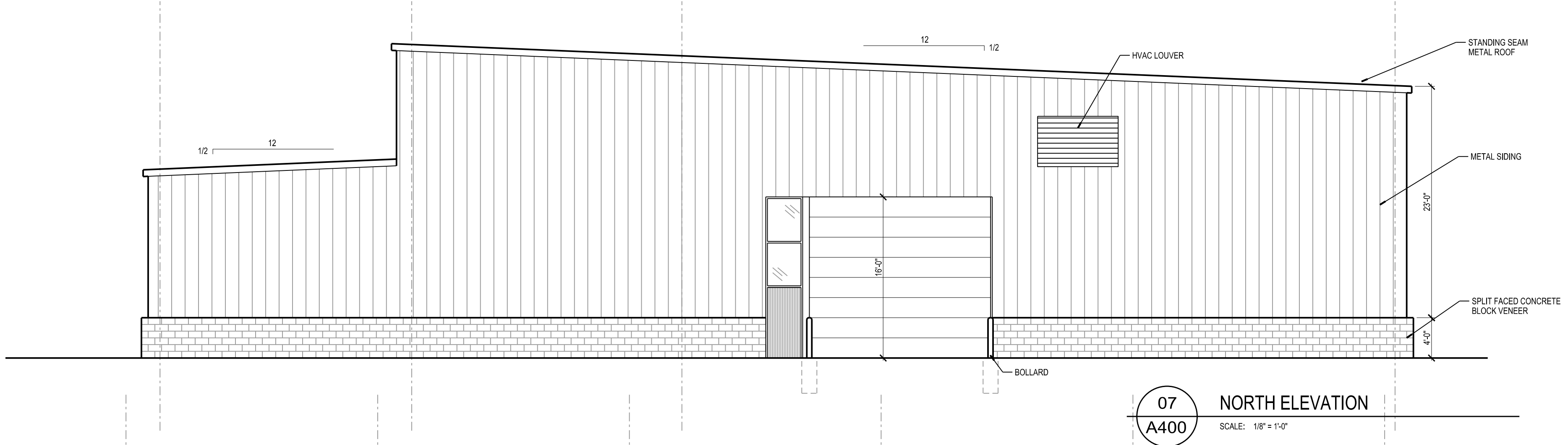
PRELIMINARY - NOT FOR CONSTRUCTION

SCALE: 1/8"=1'-0"
PLOTTED BY: BAW

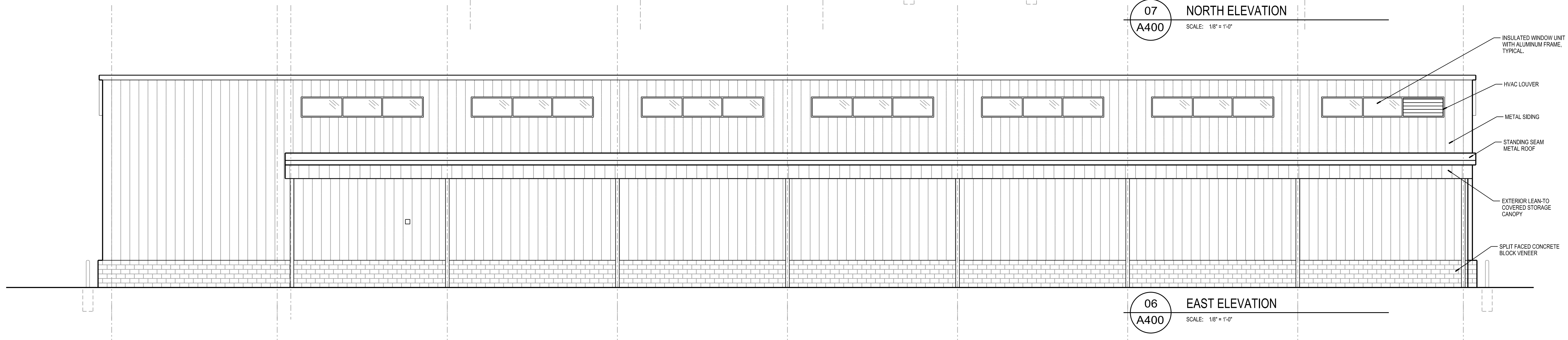
ORIGINAL SIZE: 24" x 36"
X:\4150\aw415004\A400.dgn



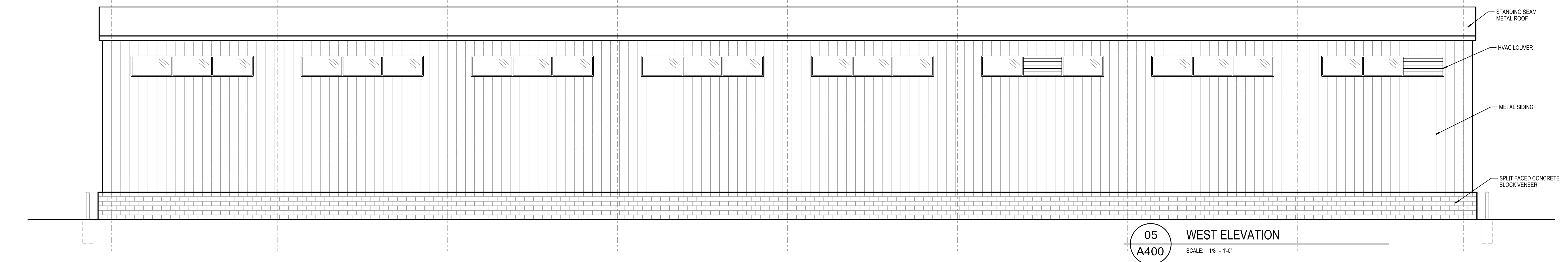
08 SOUTH ELEVATION
SCALE: 1/8" = 1'-0"



07 NORTH ELEVATION
SCALE: 1/8" = 1'-0"



06 EAST ELEVATION
SCALE: 1/8" = 1'-0"



05 WEST ELEVATION
SCALE: 1/8" = 1'-0"

ISSUANCES	REVISIONS

Angus Young
Architecture
Engineering
Interior Design
Balance in Creativity

555 South River Street, Janesville, WI 53548-4783
Ph: 608.756.2326 Fax: 608.756.0464
www.angusyoung.com

STREETS DEPARTMENT
NEW WARM STORAGE BUILDING
CITY OF MADISON
MADISON, WISCONSIN

PROJECT NUMBER
48150
APPROVED BY
REVIEWED BY
DRAWN BY
JLH

10/18/2011 9:30:03 AM
WARM STORAGE
EXTERIOR ELEVATIONS
BASE BID

A400

PRELIMINARY - NOT FOR CONSTRUCTION

Due to electronic distribution, this drawing may not be printed to the scale indicated on the drawings. Do NOT use scale to determine dimensions or sizes.

Copyright © 2011 Angus Young Associates, Inc. All Rights Reserved

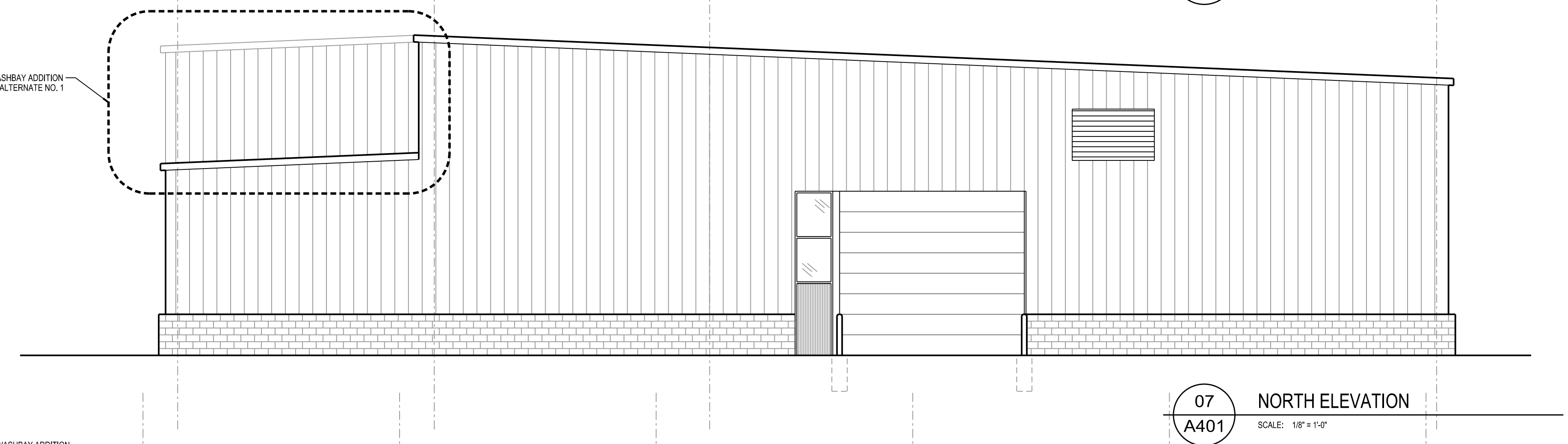
SCALE: 1/8"=1'-0"
PLOTTED BY: BAW

ORIGINAL SIZE: 24" x 36"
X:\18150\aw4815000\A401.dgn

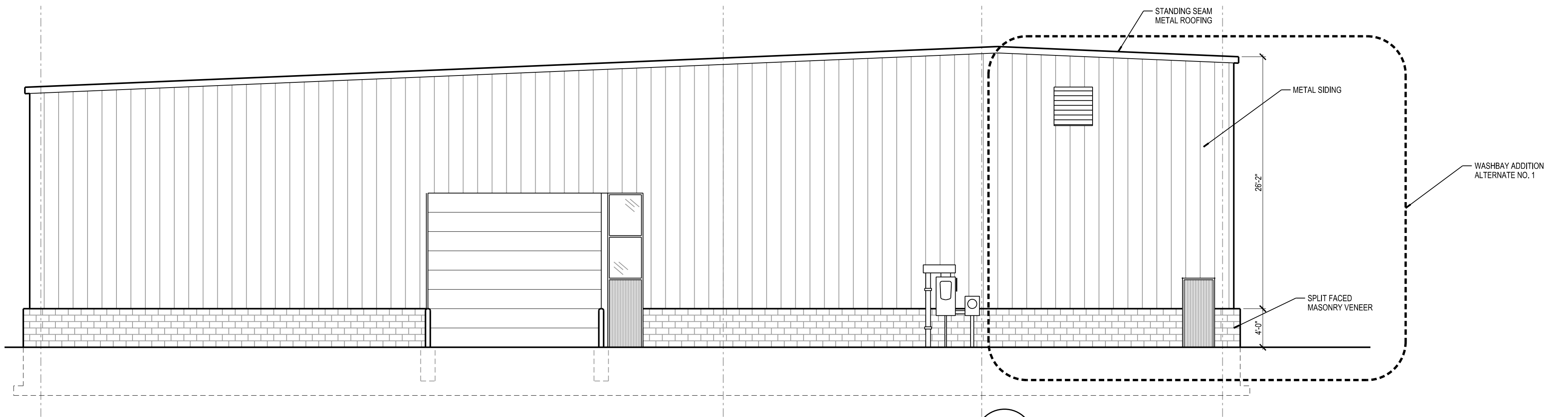


05 WEST ELEVATION
A401 SCALE: 1/8" = 1'-0"

06 EAST ELEVATION
A401 SCALE: 1/8" = 1'-0"



07 NORTH ELEVATION
A401 SCALE: 1/8" = 1'-0"



08 SOUTH ELEVATION
A401 SCALE: 1/8" = 1'-0"

Due to electronic distribution, this drawing may not be printed to the scale indicated on the drawings. Do NOT use scale to determine dimensions or sizes.

STREETS DEPARTMENT
NEW WARM STORAGE BUILDING
CITY OF MADISON
MADISON, WISCONSIN

PROJECT NUMBER
48150
APPROVED BY
REVIEWED BY
DRAWN BY
JLH
10/18/2011 9:30:12 AM
WARM STORAGE
EXTERIOR ELEVATIONS
ALTERNATE #1
W/ WASH BAY
A401

Angus
Young
Architecture
Engineering
Interior Design
Balance in Creativity
555 South River Street, Janesville, WI 53548-4783
Ph: 608.756.2326 Fax: 608.756.0464
www.angusyoung.com

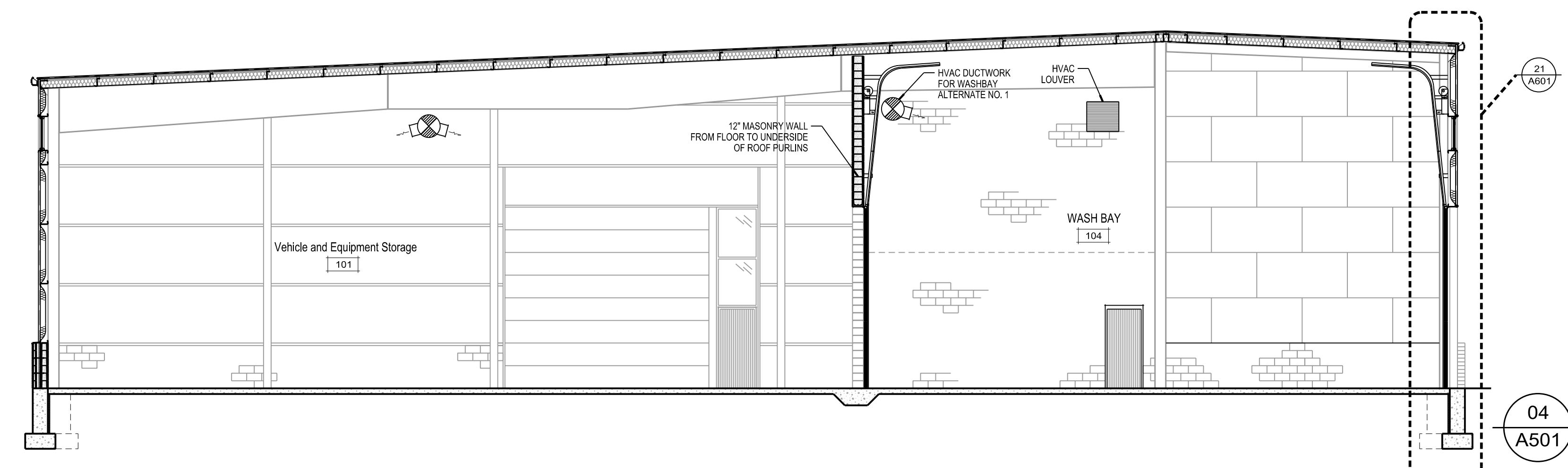
ISSUANCES	REVISIONS

Copyright © 2011 Angus-Young Associates, Inc. All Rights Reserved

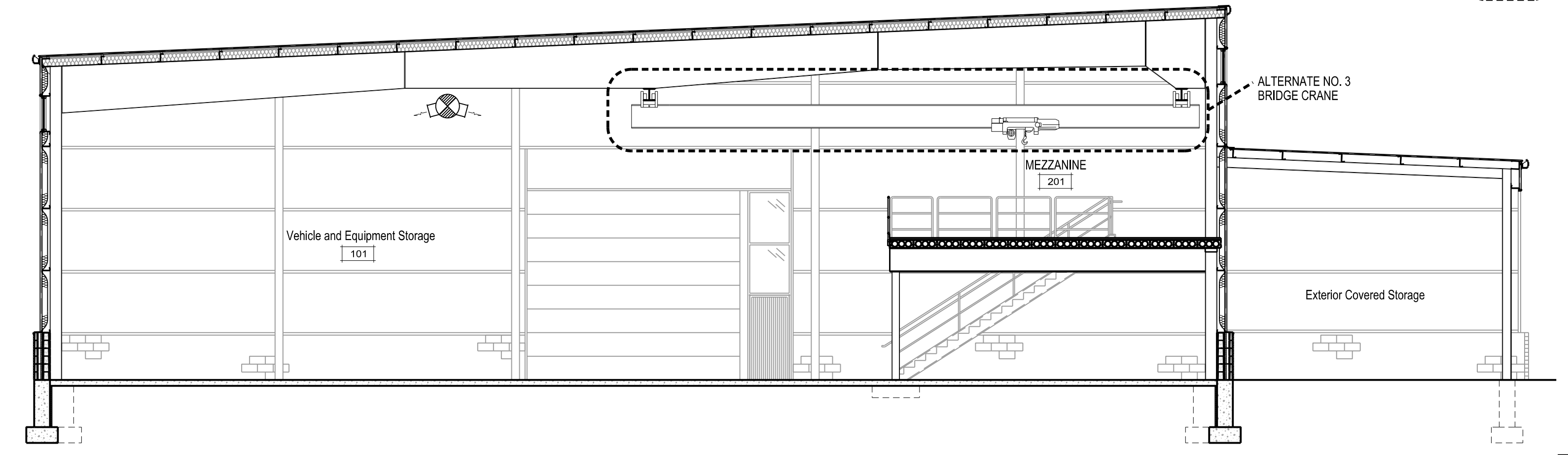
PRELIMINARY - NOT FOR CONSTRUCTION

SCALE: 1/8"=1'-0"
PLOTTED BY: BAW

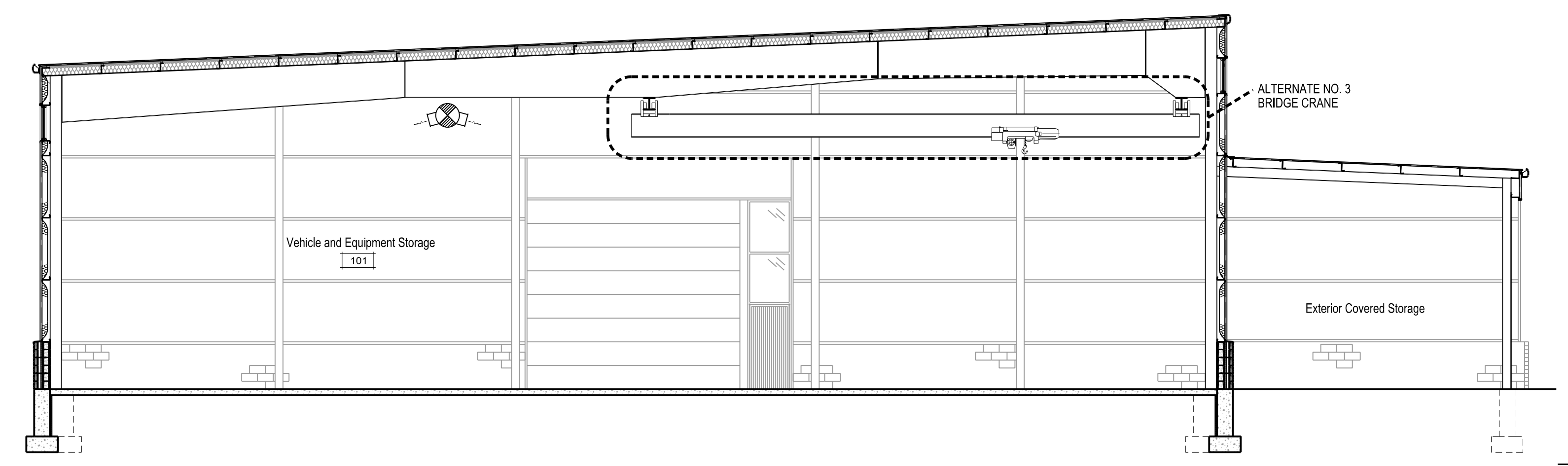
ORIGINAL SIZE: 24" x 36"
X:\4150\4150.dwg



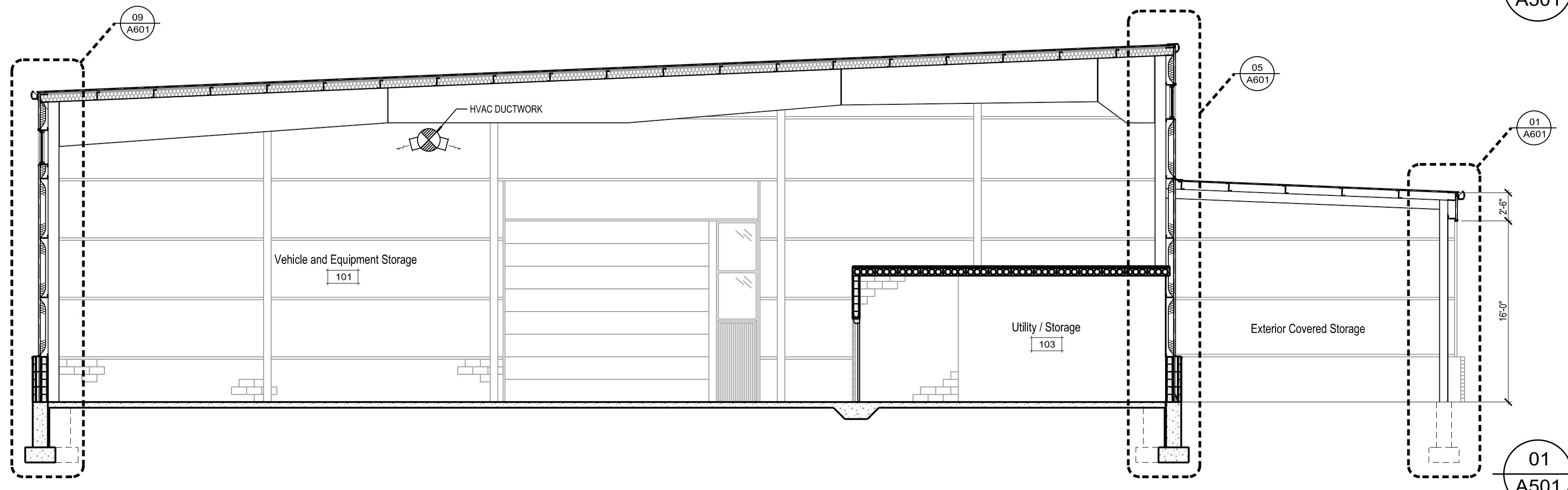
04 BUILDING SECTION - ALTERNATES
SCALE: 1/8" = 1'-0"



03 BUILDING SECTION - ALTERNATES
SCALE: 1/8" = 1'-0"



02 BUILDING SECTION BASE BID
SCALE: 1/8" = 1'-0"



01 BUILDING SECTION - BASE BID
SCALE: 1/8" = 1'-0"

PRELIMINARY - NOT FOR CONSTRUCTION

Due to electronic distribution, this drawing may not be printed to the scale indicated on the drawings. Do NOT use scale to determine dimensions or sizes.

PROJECT NUMBER
48150

APPROVED BY

REVIEWED BY

DRAWN BY
BTW

10/18/2011 9:30:20 AM

STREETS DEPARTMENT
NEW WARM STORAGE BUILDING
CITY OF MADISON
MADISON, WISCONSIN

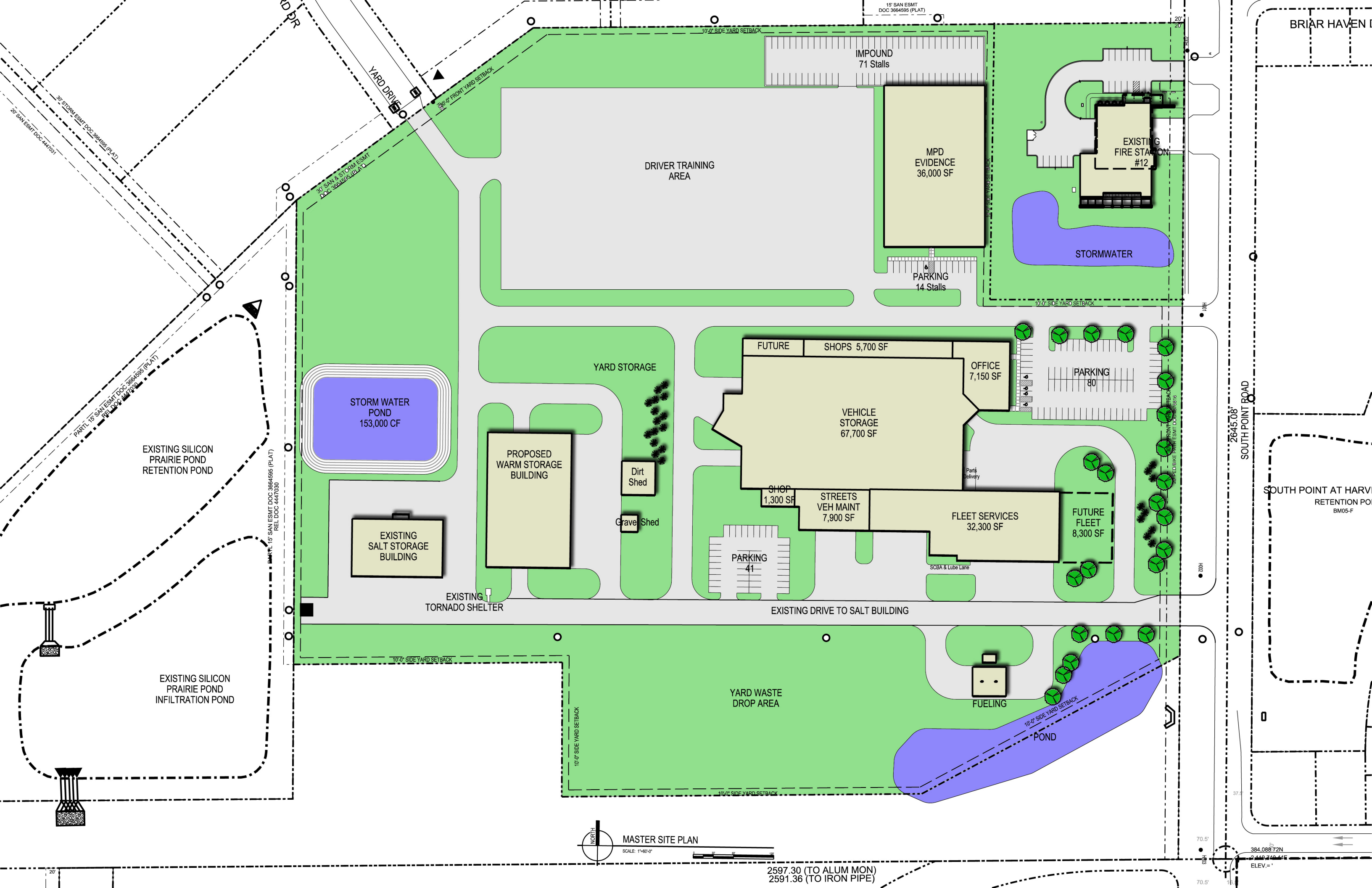
Angus Young
Architecture
Engineering
Interior Design
Balance in Creativity

555 South River Street, Janesville, WI 53548-4783
Ph: 608.756.2326 Fax: 608.756.0454
www.angusyoung.com

ISSUANCES	REVISIONS

Copyright © 2011 Angus-Young Associates, Inc. All Rights Reserved

A501



NORTH
 MASTER SITE PLAN
 SCALE: 1"=50'-0"

2597.30 (TO ALUM MON)
 2591.36 (TO IRON PIPE)

384,088.72N
 2,149,740.44E
 ELEV. = 1'

EXISTING SILICON PRAIRIE POND RETENTION POND

EXISTING SILICON PRAIRIE POND INFILTRATION POND

STORM WATER POND
 153,000 CF

EXISTING SALT STORAGE BUILDING

PROPOSED WARM STORAGE BUILDING

EXISTING TORNADO SHELTER

YARD STORAGE

Dirt Shed

Grave Shed

FUTURE

SHOPS 5,700 SF

OFFICE 7,150 SF

PARKING 80

VEHICLE STORAGE 67,700 SF

SHOP 1,300 SF

STREETS VEH MAINT 7,900 SF

FLEET SERVICES 32,300 SF

FUTURE FLEET 8,300 SF

PARKING 41

SCBA & Lube Lane

EXISTING DRIVE TO SALT BUILDING

YARD WASTE DROP AREA

FUELING

POND

IMPOUND 71 Stalls

MPD EVIDENCE 36,000 SF

EXISTING FIRE STATION #12

STORMWATER

DRIVER TRAINING AREA

PARKING 14 Stalls

2645.08
 SOUTH POINT ROAD

SOUTH POINT AT HARV
 RETENTION POND
 BM05-F

BRIAR HAVEN I

30' STORM ESMT DOC 3864595 (PLAT)
 20' SAN ESMT DOC 4447030
 PARTIAL 18' SAN ESMT DOC 3864595 (PLAT)
 30' SAN & STORM ESMT DOC 3864595 (PLAT)

15' SAN ESMT DOC 3864595 (PLAT)
 REL DOC 4447030

20' SIDE YARD SETBACK

20' SIDE YARD SETBACK

10'-0" SIDE YARD SETBACK

10'-0" SIDE YARD SETBACK

10'-0" SIDE YARD SETBACK

10'-0" SIDE YARD SETBACK

10'-0" SIDE YARD SETBACK

20'-0" FRONT YARD SETBACK

10'-0" SIDE YARD SETBACK

10'-0" SIDE YARD SETBACK

10'-0" SIDE YARD SETBACK

10'-0" SIDE YARD SETBACK

10'-0" SIDE YARD SETBACK

10'-0" SIDE YARD SETBACK

37.5'

70.5'

70.5'

DESCRIPTION

The Lumark Wal-Pak Series of wall luminaires provides traditional architectural style with high performance energy efficient illumination. Rugged die-cast aluminum construction, stainless steel hardware along with a sealed and gasketed optical compartment make the Wal-Pak virtually impenetrable to contaminants. IP65 Rated. Six available lamp sources including patent pending energy efficient LED, pulse start metal halide, compact fluorescent, ceramic metal halide, standard metal halide and high pressure sodium. UL and cUL wet location listed. The Wal-Pak wall luminaire is ideal for pathway illumination, building entrances, vehicle ramps, schools, tunnels, stairways and loading docks.

SPECIFICATION FEATURES

Housing

Rugged one-piece die-cast aluminum housing and hinged, removable die-cast aluminum door. One-piece silicone gasket seals the optical chamber. UL 1598 wet location listed and IP65 ingress protection rated. Not recommended for car wash applications.

Electrical

Ballasts, LED driver and related electrical components are hard mounted to the die-cast housing for optimal heat sinking and operating efficiency. Wiring is extended through a silicone gasket at the back of the housing. Three 1/2" threaded conduit entry points allow for thru-branch wiring. LED thermal management system incorporates both conduction and natural convection to transfer heat rapidly away from LED source. Integral LED electronic driver incorporates internal fusing designed to withstand a 3kV surge test and is Class 2 rated for 120-277V with an operating temperature of -30° to 60°C. Wal-

Pak LED systems maintain greater than 70% of the initial light output after 50,000 hours of operation. UL listed HID high power factor ballasts are Class H insulation rated (metal halide: 150, 175, 200, 250, 320, 350, 400W [-30°C / -20°F], (high pressure sodium: 50, 70, 100, 150, 250, 400W [-40°C / -40°F]. High efficiency HID ballasts are available in 120V, 208V, 240V, 277V, 347V and 480V. Compact fluorescent high power factor ballasts are Class P insulation rated for 120-277V and have a starting temperature of -18°C / 0°F.

Optical

Highly reflective anodized aluminum reflectors provide high efficiency illumination. Optical assemblies include impact resistant borosilicate refractive glass, Solite™ flat diamond patterned glass and full cutoff IESNA compliant configurations. Patent pending, solid state LED luminaires are thermally optimized with 2400 or 4000 lumen package modules. HID models are offered in horizontal medium or mogul-based

Catalog #		Type	
Project		OA	
Comments		Date	
Prepared by			

metal halide [MH / MP] or high pressure sodium [HP] lamps. T6 ceramic metal halide [CM] and 4-pin compact fluorescent [CF] lamp models offer high efficiency energy saving illumination.

Door Assembly

Single point, captive stainless steel hardware secures the removable hinged door allowing for ease of installation and maintenance. Door assembly is hinged at the bottom for easy removal, installation and re-lamping.

Finish

Housing and door are protected with 5-stage TGIC dark bronze polyester powder coat paint. Premium TGIC power coat finishes withstand extreme climate changes while providing optimal color and gloss retention. Optional premium colors are available.



WP WAL-PAK

2400 - 4000 Lumen LED
39 - 400W

High Pressure Sodium
Pulse Start Metal Halide
Metal Halide

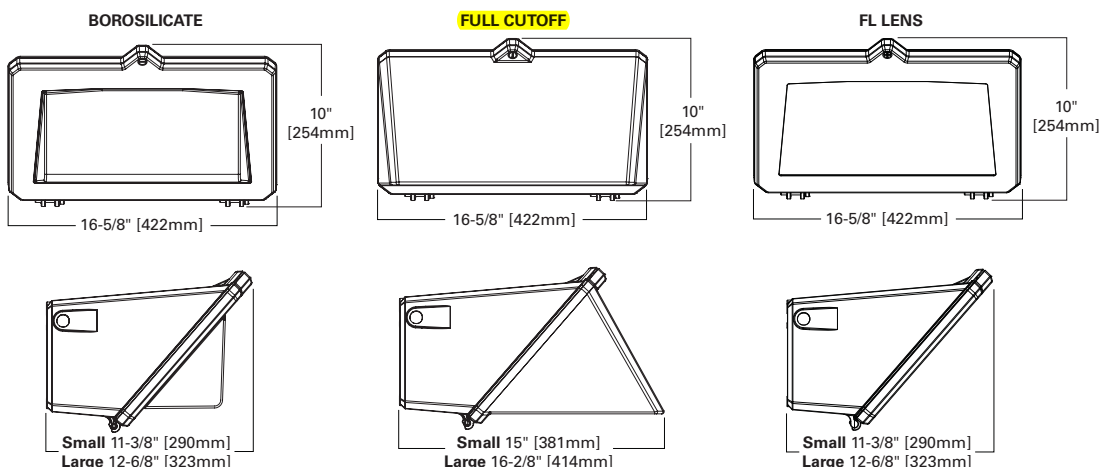
Ceramic Metal Halide
32 - 140W

Compact Fluorescent



WALL MOUNT LUMINAIRE

DIMENSIONS



TECHNICAL DATA

UL and cUL Wet Location Listed
IP65 Rated
40°C Maximum Ambient Temperature
External Supply Wiring 90°C Minimum
EISA @, ARRA, Title 20 Compliant
LM79 / LM80 Compliant

ENERGY DATA

Reactor Ballast Input Watts

50W HPS NPF (58 Watts)
70W HPS NPF (82 Watts)
100W HPS NPF (118 Watts)
150W HPS NPF (175 Watts)

High Reactance Ballast Input Watts

50W MP HPF (69 Watts)
70W MP HPF (94 Watts)
100W MP HPF (129 Watts)
150W MP HPF (185 Watts)

CWA Ballast Input Watts

200W HPS HPF (250 Watts)
200W MP HPF (227 Watts) @
250W MP HPF (283 Watts) @
320W MP HPF (365 Watts)
350W MP HPF (400 Watts) @
400W HPS HPF (465 Watts)
400W MP HPF (452 Watts) @

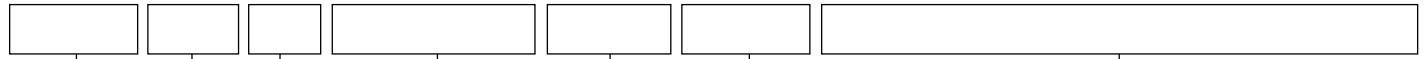
SHIPPING DATA

Approximate Net Weight:

32-42 lbs. (15-19 kgs.) ADH092103 pc
2010-11-03 17:10:12

ORDERING INFORMATION

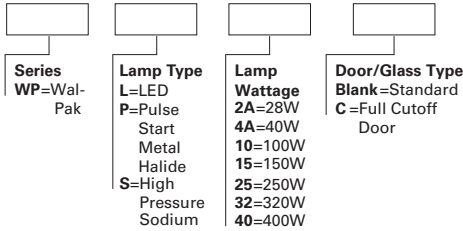
Sample Number: MPWP-GL-250-MT-2EM/SC/MR



- Lamp Type**
MP=Pulse Start Metal Halide
HP=High Pressure Sodium
LD=Solid State Light Emitting Diodes (LED)
CF=Compact Fluorescent¹
CM=Ceramic Metal Halide²
MH=Metal Halide³
- Series**
WP=Wal-Pak
- Door Type**⁴
GL=Borosilicate Glass Door
FC=Full Cutoff Door
FL=Flat Solite Glass Door
PL=Polycarb Refractor Door
- Lamp Wattage**⁵
LED
2A=(2400 Initial Lumens)
4A=(4000 Initial Lumens)
MP
50=50W
70=70W
100=100W
150=150W
200=200W
250=250W
320=320W
350=350W
400=400W
MH
175=175W
250=250W
400=400W
HP
50=50W
70=70W
100=100W
150=150W
250=250W
400=400W
CM
39=39W
70=70W
100=100W
150=150W
CF
32=32W
42=42W
57=57W
70=70W
64=(2-32)
84=(2-42)
114=(2-57)
140=(2-70)
- Voltage**⁶
120V=120V
208V=208V
240V=240V
277V=277V
347V=347V⁷
480V=480V
DT=Dual-Tap
MT=Multi-Tap
TT=Tri-Tap
5T=5-Tap
E=Electronic Ballast⁸
ED=Electronic LED Driver
- Options**⁹
F1=Single fuse¹⁰
F2=Double fuse¹⁰
PE=Photocontrol button¹⁰
LL=Includes lamp²
BK=Black housing
WH=White housing
GM=Graphite Metallic housing
AP=Grey housing
DP=Dark Platinum housing
DIMA=CF Dimming Ballast¹¹
DIMB=CF Dimming Ballast¹¹
SGL=Solite Glass Lens¹²
Q=Quartz Restrike T4 Lamp¹³
EM=Emergency Quartz Restrike T4 Lamp with Time Delay Relay¹³
EM/SC=Emergency Separate Circuit T4 Lamp¹³
QMR=Emergency Back-Up 1-MR16 Lamp^{14,15}
2QMR=Emergency Back-Up 2-MR16 Lamps^{14,15}
2QMR/SC=Emergency Back-Up MR16 and EM separate circuit 2-MR16 Lamp^{14,16}
EMMR=Emergency Back-Up 1-MR16 Lamp with Time Delay Relay^{14,15}
2EMMR=Emergency Back-Up 2-MR16 Lamps with Time Delay Relay^{14,15}
2EMMR/SC=Emergency Back-Up 1-MR16 Lamp with Time Delay Relay and EM Separate Circuit^{14,15,16}
EM/SC/MR=Emergency Back-Up Separate Circuit 1-MR16 Lamp^{14,15,16}
2EM/SC/MR=Emergency Back-Up Separate Circuit 2-MR16 Lamps^{14,15,16}
EM/SC/12V=Emergency Separate Circuit 12V 1-MR16 Lamp^{14,16,17}
2EM/SC/12V=Emergency Separate Circuit 12V 2-MR16 Lamps^{14,16,17}
EMI40=Emergency Cold Temperature UL 924 CF Power Pack 1 Lamp¹⁸
EMI40/2L=Emergency Cold Temperature UL 924 CF Power Pack 2 Lamp¹⁸
CF-EM=Emergency UL924 CF Power Pack 1 Lamp¹⁹
CF-EM/2L=Emergency UL924 CF Power Pack 2 Lamp¹⁹
EMLED-CD=LED Battery Back-Up Cold Temperature²⁰
- Accessories**²¹
WG/WPGL=Wire Guard Borosilicate Glass Lens Door
WG/WPFC=Wire Guard Full Cutoff Door
WG/WPFL=Wire Guard FL Lens Door
TR/WP=Tamper Resistant Screw and Bit
VS/WPGL=Polycarbonate Vandal Shield for Borosilicate Glass Lens Door

STOCK SAMPLE NUMBER - LAMP INCLUDED

SAMPLE NUMBER: WPP40C



- Series**
WP=Wal-Pak
- Lamp Type**
L=LED
P=Pulse Start Metal Halide
S=High Pressure Sodium
- Lamp Wattage**
2A=28W
4A=40W
10=100W
15=150W
25=250W
32=320W
40=400W
- Door/Glass Type**
Blank=Standard Door
C=Full Cutoff Door

NOTES: Options not available with stock products. Refer to standard order information to add options. MT is standard. Lamp Type: MP not available in 100W. HPS not available in 320W. Borosilicate glass door is standard. 2A and 4A models available in LED only. LED models are 120-277V.

BUG RATING	B	U	G	B	U	G
Borosilicate Glass Door (GL)						
LDWP-GL-2A-ED	0	3	2	0	2	1
LDWP-GL-4A-ED	1	3	2	0	3	1
Polycarbonate Lens (PL)						
LDWP-PL-2A-ED	0	3	2	0	1	1
LDWP-PL-4A-ED	1	3	2	0	1	1

For more information on the IES BUG (Backlight-Uplight-Glare) Rating visit www.iesna.org/PDF/Erratas/TM-15-07BugRatingsAddendum.pdf

- NOTES:** 1 CF Single lamp offered in all door configurations. CF dual lamp models not offered with FL door type. 70W models not available with EMI40-2L, CF-EM, CF-EM-2L. CF not available in 347V.
- 2 All CM models offered with T6 envelope G12 lamp base. T6 Lamp included with CM models. Order LL with CM models. Ceramic Metal Halide (CM) is available with (MP) pulse start metal halide or E - Electronic Ballast. 400W MP must be ordered with LL option to be Title 20 Compliant.
- 3 MH products available for non-US markets only.
- 4 Small housing offered for 175W and below, CF and LD models. Large housing for 200W-400W. FL door not available with CF or 200-400W models. Polycarbonate lens available in models up to 175W max including LD. Polycarbonate lens not available with full cutoff door or FL models. Solite stipple glass is standard for FL lens. Clear glass is standard for full cutoff door types except for LD. LD full cutoff door is standard with solite glass.
- 5 **LD nominal initial lumens prior to optical and configuration losses based on 67 CRI/5000K package at 25°C ambient.** MH and MP 175W and below are medium base all others are mogul base. CF 64, 84, 114 and 140 models are offered in borosilicate glass and full cutoff doors only. In cold temperatures, compact fluorescent lamps produce lower illumination levels. CF 140 models and 400W HPS rated for 25°C.
- 6 See Voltage Chart for descriptions. 5T available in 400W MH models only. 90°C Rated wire required for thru-branch wiring for units 175W and lower. 105°C Rated wire required for thru-branch wiring for units 200W and higher. Thru-branch wiring is rated for 40°C for LD and 175W and below. Higher wattage thru-branch wiring is rated for use in 25°C ambient operating environments.
- 7 347V not available with thru-branch wiring. For 347 or 480V LD specify voltage. ED will be supplied with integral step down transformer. 347V not available with CF lamps.
- 8 Available with 70-150W MP or CM lamps. E is standard for all CF models. All electronic ballasts are universal 120-277V.
- 9 Not all options can be combined. Only one emergency or battery back-up option available within the fixture. CF Models utilize EMI40, EMI40/2L, CF/EM or CF-EM/2L option for emergency egress. LD Models utilize EM-LED or EMLED-CD options only for battery back-up.
- 10 Must specify voltage. F1=120, 277 or 347V. F2=208, 240 or 480V. PE=120, 208, 240 or 277V.
- 11 DIMA dimming ballast, specify number of lamps, available for 1 or 2-26W or 1-32W, 1-42W. DIMB available for 2-42W, 1-57W or 1-70W.
- 12 SGL optional on HID and CF models only. See note number 4.
- 13 Q or EM not available with LD or E electronic ballast. Q or EM Minimum HID wattage is 70 watts. EM/SC available in 120V only, EM/SC not available with LD. Maximum 100W 120V T4 DC Bayonet Quartz lamp. Lamp supplied by others.
- 14 QMR, 2QMR, EMMR, 2EMMR & 2EMMR/SC not available with LD or E electronic ballast. Minimum HID wattage is 70 watts.
- 15 1 or 2 GU10 base 50W max - 120V Halogen. Lamps supplied by others. EM/SC/MR, 2EM/SC/MR, EM/SC/12V, 2EM/SC/12V not available with LD.
- 16 Emergency lamp leads out of the back of the unit to auxiliary power. Lamps independently wired to separate circuits.
- 17 Low Voltage 1 or 2 GU5.3 MR16 base, 12V DC, 35W max. Lamps supplied by others.
- 18 For use in 25°C ambient operating temperature environments. EMI40, EMI40/2L used for CF lamps. Specify 120 or 277V. EMI40 supports 1-70W CF max, EMI40/2L supports 2-32W CF max. Minimum -18°C/-4°F.
- 19 For use in 25°C ambient operating temperature environments. Specify 120 or 277V. CF-EM supports up to 1-57W CF. CF-EM/2L supports 2-18W CF. 18W lamps supplied by others. Minimum temperature is 0°F/32°C.
- 20 EMLED-CD available with 4A models only. For use in 25°C ambient operating temperature environments. Specify 120 or 277V. EMLED-CD minimum -20°C/-4°F. Battery pack is a UL recognized component.
- 21 Order separately.

VOLTAGE CHART	
DT=Dual-Tap	120/277 (wired 277V)
MT=Multi-Tap	120/208/240/277 (wired 277V)
TT=Tri-Tap	120/277/347 (wired 347V)
5T=5 Tap	120/208/240/277/480 (wired 480V)
E=Electronic Ballast	120-277V (Universal) (50/60 HZ)
ED=Electronic LED Driver	120-277V (Universal) (50/60 HZ)

LAMP TYPE	WATTAGE
Pulse Start Metal Halide	50, 70, 100, 150, 200, 250, 320, 350, 400W
Metal Halide	175, 250, 400W
High Pressure Sodium	50, 70, 100, 150, 250, 400W
T6 Ceramic Metal Halide	39, 70, 100, 150W
Compact Fluorescent	(1) 32, (1) 42, (1) 57, (1) 70, (2) 32, (2) 42, (2) 57, (2) 70
LED	2A (2400 Initial Lumens), 4A (4000 Initial Lumens)