

TRANSPORTATION PROJECT PLAT NO: 12777-3 - 4.11 AMENDMENT NO. 1

THIS AMENDMENT ADDS UTILITY NUMBER 115, REMOVES UTILITY NUMBER 112 AND AMENDS UTILITY NUMBER 104, ALL WITHIN PARCEL 44, OF TRANSPORTATION PROJECT PLAT 12777-3 - 4.11, RECORDED AS DOCUMENT NUMBER 5904334 AND FILED IN VOLUME 61-089B, ON PAGES 533 AND 534.

THAT PART OF FIRST ADDENDUM TO WHITNEY POINT CONDOMINIUM, AND PART OF OUTLOT 1 OF UNIVERSITY HILL FARMS GUGEL ADDITION, LOCATED IN THE SW 1/4 OF THE SE 1/4 OF SECTION 19, PART OF LOT 8 OF UNIVERSITY RESEARCH PARK UNIVERSITY OF WISCONSIN-MADISON FIRST ADDITION AND PART OF LOT 2, ELEMENT DISTRICT LOCATED IN THE NW 1/4 OF THE NE 1/4 OF SECTION 30, ALL IN T 7 N, R 9 E, CITY OF MADISON, DANE COUNTY, WISCONSIN.

RELOCATION ORDER EAST-WEST BUS RAPID TRANSIT - MINERAL POINT ROAD SEGMENT, W. BELTLINE HIGHWAY TO WHITNEY WAY, DANE COUNTY.

TO PROPERLY ESTABLISH, LAY OUT, WIDEN, ENLARGE, EXTEND, CONSTRUCT, RECONSTRUCT, IMPROVE, OR MAINTAIN A PORTION OF THE HIGHWAY DESIGNATED ABOVE, THE CITY OF MADISON DEEMS IT NECESSARY TO RELOCATE OR CHANGE SAID HIGHWAY AND ACQUIRE CERTAIN LANDS AND INTERESTS OR RIGHTS IN LANDS FOR THE ABOVE-NAMED PROJECT.

TO EFFECT THIS CHANGE, PURSUANT TO AUTHORITY GRANTED UNDER SUBSECTIONS 62.22, WISCONSIN STATUTES, THE CITY OF MADISON.

HEREBY ORDERS THAT:

- THAT PORTION OF SAID HIGHWAY AS SHOWN ON THIS PLAT IS LAID OUT AND ESTABLISHED TO THE LINES AND WIDTHS AS SO SHOWN FOR THE ABOVE-NAMED PROJECT.
- THE LANDS OR INTERESTS OR RIGHTS IN LANDS AS SHOWN ON THIS PLAT ARE REQUIRED BY THE CITY OF MADISON FOR THE ABOVE PROJECT AND SHALL BE ACQUIRED IN THE NAME OF THE CITY OF MADISON, PURSUANT TO THE PROVISIONS OF SUBSECTION 62.22, WISCONSIN STATUTES.

NOTES:

POSITIONS SHOWN ON THIS PLAT ARE WISCONSIN COORDINATE REFERENCE SYSTEM COORDINATES (WICRS), DANE COUNTY, NAD 83(2007) IN U.S.SURVEY FEET. VALUES SHOWN ARE GRID COORDINATES, GRID BEARINGS AND GRID DISTANCES. GRID DISTANCES MAY BE USED AS GROUND DISTANCES.

ALL NEW RIGHT-OF-WAY MONUMENTS ARE TYPE 2 (TYPICALLY 3/4" X 24" REBARS) UNLESS OTHERWISE NOTED, AND WILL BE PLACED PRIOR TO THE COMPLETION OF THE PROJECT.

RIGHT-OF-WAY BOUNDARIES ARE DEFINED WITH COURSES OF THE PERIMETER OF THE HIGHWAY LANDS REFERENCED TO THE U.S. PUBLIC LAND SURVEY SYSTEM OR OTHER "SURVEYS OF PUBLIC RECORD".

PROPERTY LINES SHOWN ON THIS PLAT ARE DRAWN FROM DATA DERIVED FROM MAPS AND DOCUMENTS OF PUBLIC RECORD AND/OR EXISTING OCCUPATIONAL LINES. THIS PLAT MAY NOT BE A TRUE REPRESENTATION OF EXISTING PROPERTY LINES, EXCLUDING RIGHT-OF-WAY LINES, AND SHOULD NOT BE USED AS A SUBSTITUTE FOR AN ACCURATE FIELD SURVEY.

FOR CURRENT ACCESS/DRIVEWAY INFORMATION, CONTACT THE TRAFFIC ENGINEERING UNIT OF THE CITY OF MADISON.

EXISTING ACCESS CONTROL ESTABLISHED FROM CSM 10343.

FOUND PROPERTY IRONS ARE 3/4" REBAR, UNLESS OTHERWISE NOTED.

FOR ADDITIONAL INFORMATION REFER THE TITLE SHEET, RECORDED AS SHEET 2 OF 4 IN VOLUME 61-088A OF TRANSPORTATION PROJECT PLATS, ON PAGES 509 - 512 AS DOCUMENT NO. 5903206.

Office of Register of Deeds
Dane County, Wisconsin

Received for Record _____

20____ at ____ o'clock ____ M

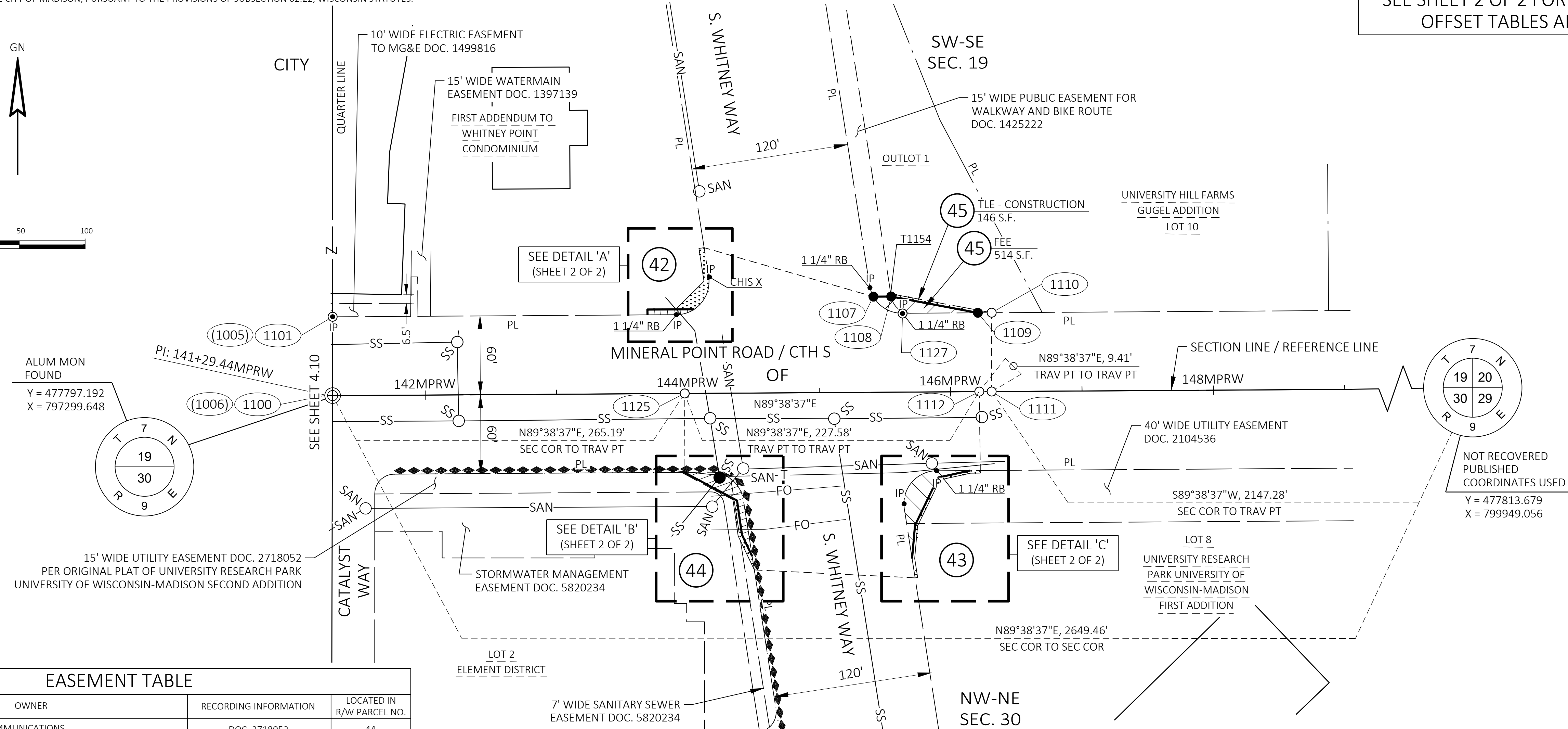
and recorded in vol. _____

of _____ on page _____

Register

RESERVED FOR REGISTER OF DEEDS
PROJECT NUMBER 12777 - 3 - 4.11
SHEET 1 OF 2
AMENDMENT NO. 1

SEE SHEET 2 OF 2 FOR COURSE TABLES, STATION
OFFSET TABLES AND BLOW UP DETAILS



EASEMENT TABLE

UTILITY NUMBER	OWNER	RECORDING INFORMATION	LOCATED IN R/W PARCEL NO.
104	CHARTER COMMUNICATIONS	DOC. 2718052	44
110	CITY OF MADISON	DOC. 2718052	44
115	WINDSTREAM	NO EASEMENT OF RECORD	44

SCHEDULE OF LANDS & INTERESTS REQUIRED

PARCEL NUMBER	OWNER(S)	INTEREST(S) REQUIRED	R/W SF REQUIRED			TLE SF
			NEW	EXISTING	TOTAL	
45	THE REGENTS OF THE UNIVERSITY OF WISCONSIN	FEE/TLE	514	----	514	146
42	WHITNEY POINT CONDOMINIUM	FEE/TLE	125	----	125	354
43	UNIVERSITY RESEARCH PARK, INC. & COMPASS 406, LLC	FEE/TLE	753	----	753	224
44	UNIVERSITY RESEARCH PARK, INCORPORATED	FEE/TLE	588	----	588	197

OWNER'S NAMES ARE SHOWN FOR REFERENCE PURPOSES ONLY AND ARE SUBJECT TO CHANGE PRIOR TO THE TRANSFER OF LAND INTERESTS TO THE CITY OF MADISON.

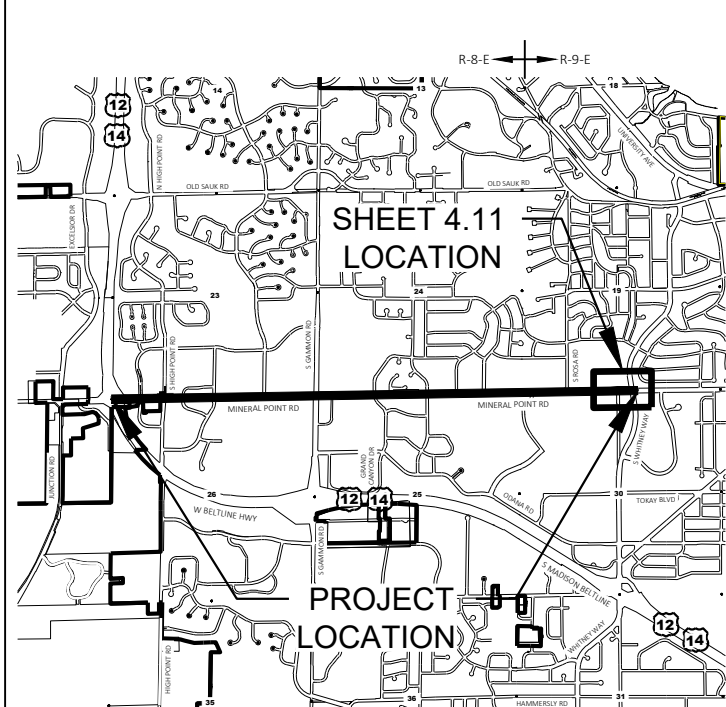
HIGHWAY

HIGHWAY	BASIS OF EXISTING R/W
MINERAL POINT ROAD / CTH S	PREVIOUS R/W PROJECT 1202, UNIVERSITY RESEARCH PARK UNIVERSITY OF WISCONSIN-MADISON FIRST ADDITION, UNIVERSITY HILL FARMS GUGEL ADDITION, FIRST ADDENDUM TO WHITNEY POINT CONDOMINIUM, ELEMENT DISTRICT, CSM 10343.

UTILITY INTERESTS REQUIRED

UTILITY NUMBER	UTILITY OWNER(S)	INTEREST REQUIRED
103	MG&E - ELECTRIC	RELEASE OF RIGHTS
104	CHARTER COMMUNICATIONS	RELEASE OF RIGHTS
110	CITY OF MADISON	NO RELEASE OF RIGHTS REQUIRED
115	WINDSTREAM	RELEASE OF RIGHTS

LOCATION SKETCH NOT TO SCALE

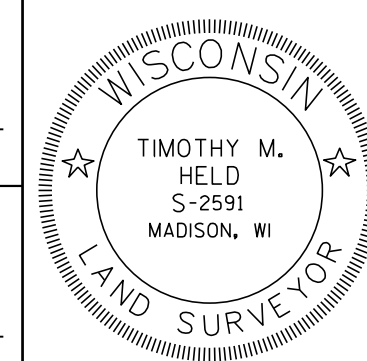


APPROVED FOR THE
CITY OF MADISON

RELOCATION ORDER APPROVED BY THE COMMON COUNCIL RES- FILE ID: _____ DATE: _____	CITY CLERK
RELOCATION ORDER APPROVED BY THE PLANNING COMMISSION DATE: _____	EXECUTIVE SECRETARY
RELOCATION ORDER APPROVED BY THE BOARD OF PUBLIC WORKS DATE: _____	EXECUTIVE SECRETARY



I, TIMOTHY M. HELD, PROFESSIONAL LAND SURVEYOR, HEREBY CERTIFY THAT IN FULL COMPLIANCE WITH THE PROVISIONS OF SECTION 84.095 OF THE WISCONSIN STATUTES AND UNDER THE DIRECTION OF THE CITY OF MADISON, I HAVE SURVEYED AND MAPPED THIS TRANSPORTATION PROJECT PLAT AND SUCH PLAT CORRECTLY REPRESENTS ALL EXTERIOR BOUNDARIES OF THE SURVEYED LAND.

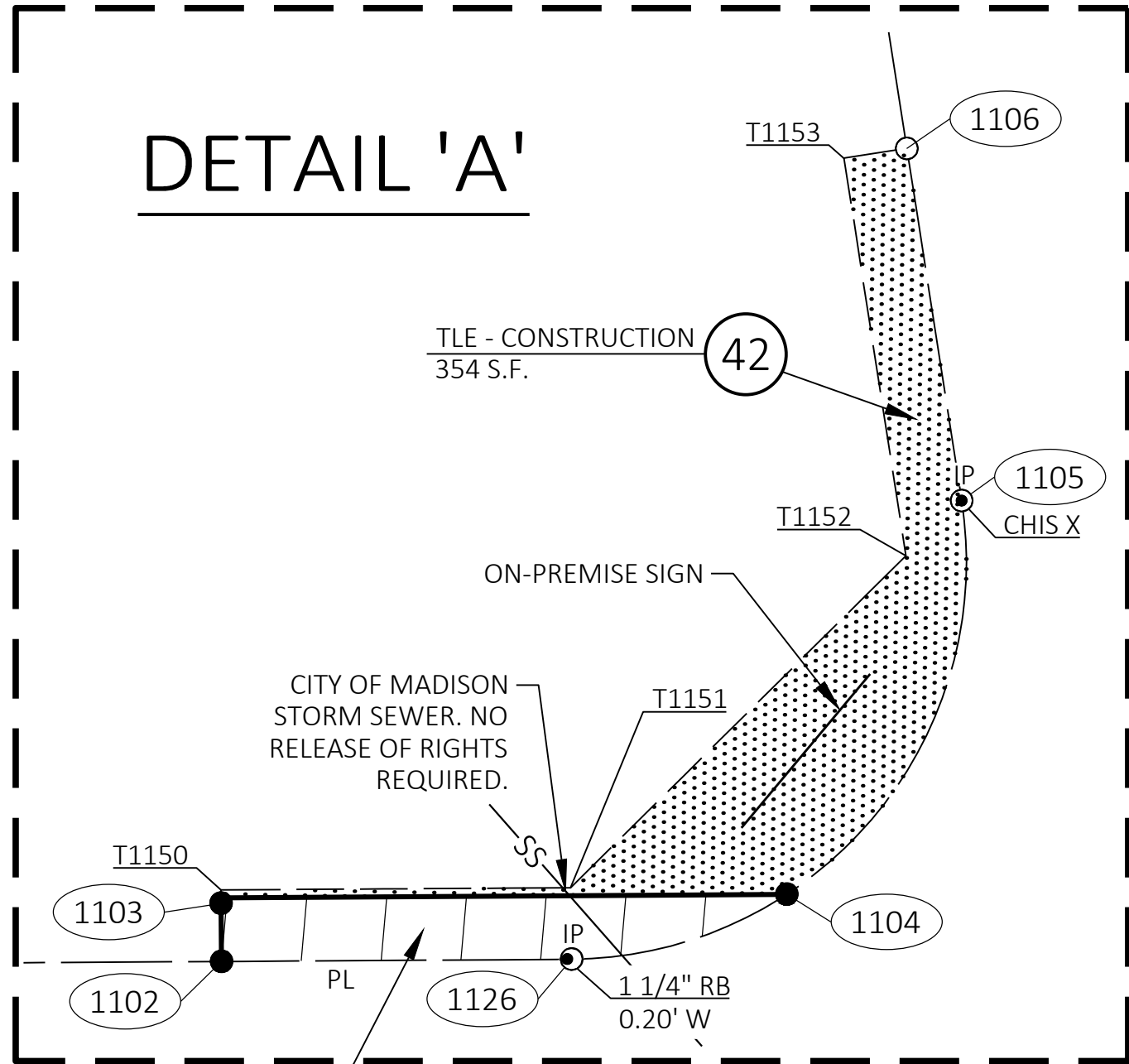


SIGNATURE: Timothy M. Held DATE: 06/04/2025
PRINT NAME: TIMOTHY M. HELD
REGISTRATION NUMBER: S-2591

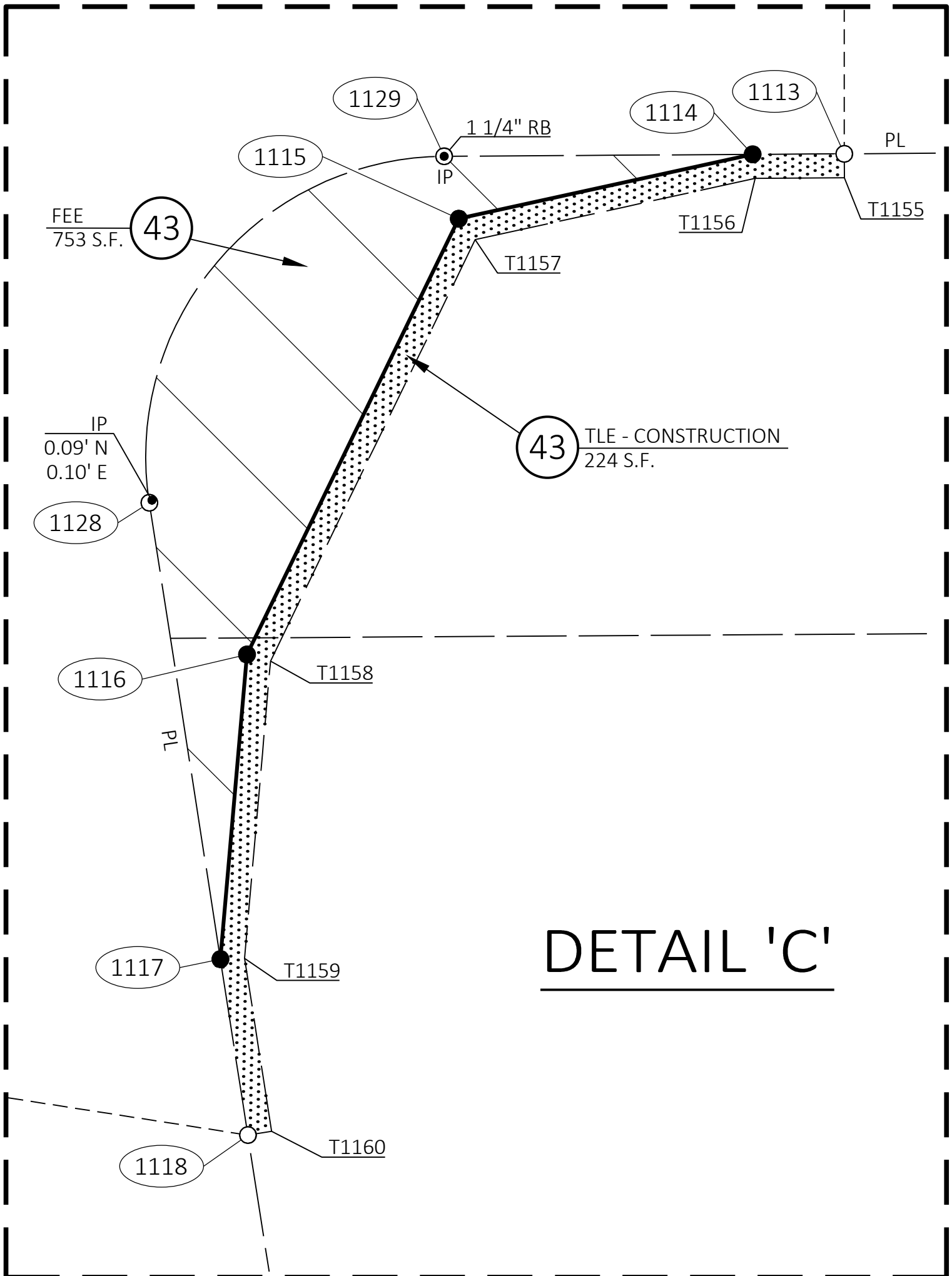
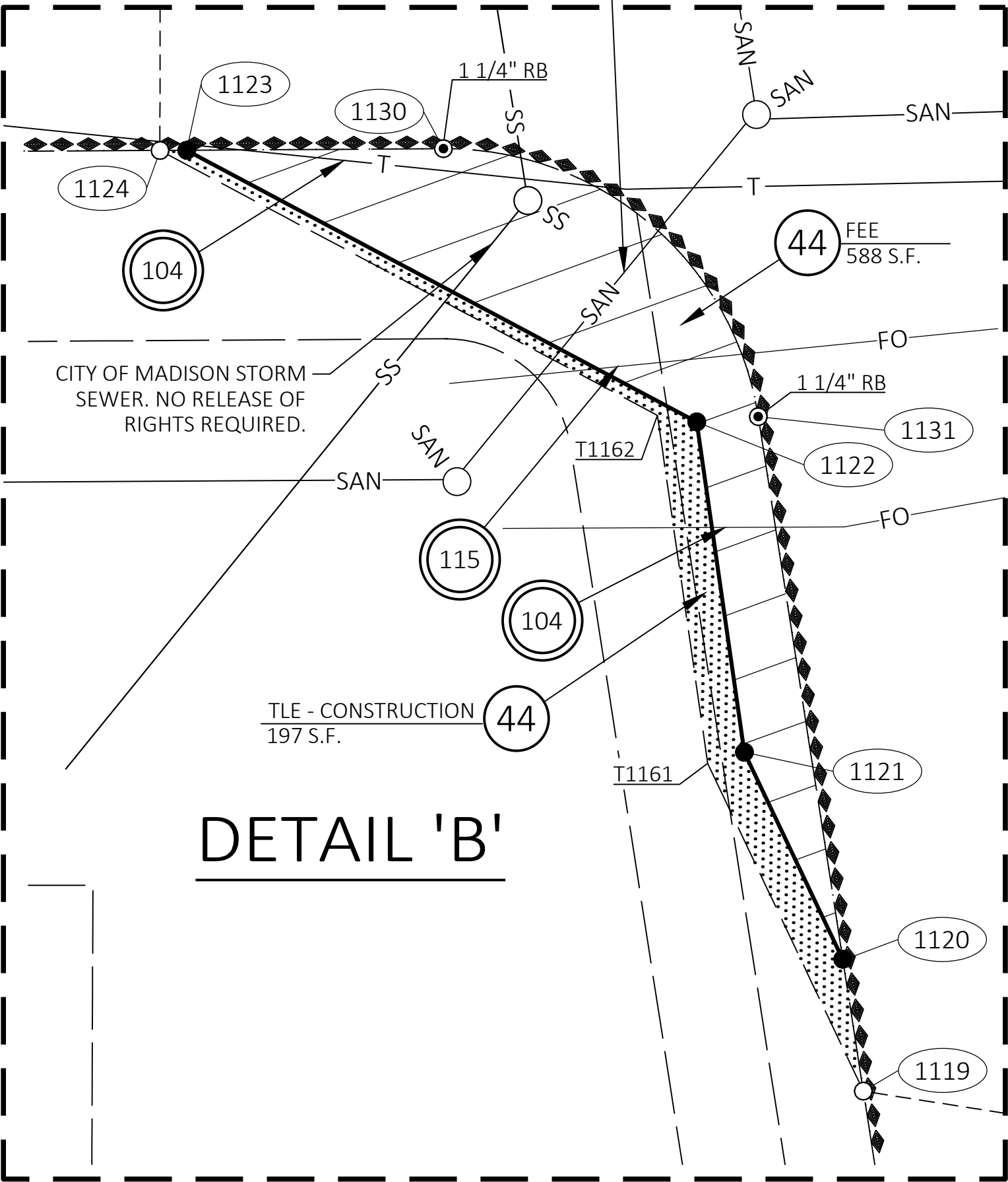
TRANSPORTATION PROJECT PLAT NO: 12777-3 - 4.11 AMENDMENT NO. 1
EXTENSION SHEET

RELOCATION ORDER EAST-WEST BUS RAPID TRANSIT - MINERAL POINT ROAD SEGMENT, W. BELTLINE HIGHWAY TO WHITNEY WAY, DANE COUNTY.

NOTES:
POSITIONS SHOWN ON THIS PLAT ARE WISCONSIN COORDINATE REFERENCE SYSTEM
COORDINATES (WISCRS), DANE COUNTY, NAD 83(2007) IN U.S.SURVEY FEET. VALUES SHOWN ARE
GRID COORDINATES, GRID BEARINGS AND GRID DISTANCES. GRID DISTANCES MAY BE USED AS
GROUND DISTANCES.



SHEET 2 OF 2 FOR COURSE TABLES, STATION
OFFSET TABLES AND BLOW UP DETAILS



R/W COURSE TABLE			
FROM POINT	TO POINT	BEARING	DISTANCE
1100	1101	N00° 00' 45"E	60.00'
1101	1102	N89° 38' 37"E	239.74'
1102	1103	N00° 21' 23"W	4.00'
1103	1104	N89° 38' 37"E	35.60'
1104	1105	SEE CURVE NOTE	
1105	1106	N08° 51' 23"W	22.42'
1106	1107	S73° 52' 02"E	134.18'
1107	1108	N89° 38' 37"E	13.53'
1108	1109	S79° 22' 58"E	67.14'
1109	1110	N89° 38' 37"E	10.51'
1110	1111	S00° 21' 23"E	60.00'
1111	1112	S89° 38' 37"W	9.41'
1112	1113	S00° 21' 23"E	60.00'
1113	1114	S89° 38' 37"W	7.63'
1114	1115	S77° 39' 33"W	25.05'
1115	1116	S25° 54' 22"W	40.35'
1116	1117	S04° 58' 32"W	25.47'
1117	1118	S08° 51' 23"E	14.82'
1118	1119	N87° 10' 03"W	122.54'
1119	1120	N08° 51' 23"W	10.53'
1120	1121	N25° 24' 37"W	18.09'
1121	1122	N08° 13' 16"W	26.34'
1122	1123	N61° 58' 12"W	45.62'
1123	1124	S89° 38' 37"W	2.10'
1124	1125	N00° 21' 23"W	60.00'
1125	1100	S89° 38' 37"W	265.19'
1104	1126	SEE CURVE NOTE	
1126	1102	S89° 38' 37"W	22.03'
1109	1127	S89° 38' 37"W	57.63'
1127	1107	SEE CURVE NOTE	
1117	1128	N08° 51' 23"W	38.47'
1128	1129	SEE CURVE NOTE	
1129	1114	N89° 38' 37"E	25.69'
1123	1130	N89° 38' 37"E	20.27'
1130	1131	SEE CURVE NOTE	
1131	1120	S08° 51' 23"E	43.34'

1104-1105
DELTA = 65°38'24" LT
R = 25.00'
LCH = 27.10'
LCB = N23°57'49"E
L = 28.64'

1104-1126
DELTA = 32°51'36" RT
R = 25.00'
LCH = 14.14'
LCB = S73°12'49"W
L = 14.34'

1127-1107
DELTA = 60°44'29" RT
R = 25.00'
LCH = 25.28'
LCB = N59°59'09"W
L = 26.50'

1128-1129
DELTA = 98°30'00" RT
R = 25.00'
LCH = 37.88'
LCB = N40°23'37"E
L = 42.98'

1130-1131
DELTA = 81°30'00" RT
R = 25.00'
LCH = 32.64'
LCB = S49°36'23"E
L = 35.56'

R/W Station & Offset Table				
Point No.	Station	Offset	Y	X
1100	141+29.44MPRW	0.00'	477797.192	797299.648
1101	141+29.83MPRW	60.00' LT	477857.193	797299.661
1102	143+69.56MPRW	60.00' LT	477858.685	797539.393
1103	143+69.56MPRW	64.00' LT	477862.685	797539.368
1104	144+05.16MPRW	64.00' LT	477862.906	797574.963
1105	144+16.32MPRW	88.70' LT	477887.671	797585.970
1106	144+13.01MPRW	110.87' LT	477909.822	797582.518
1107	145+41.67MPRW	72.78' LT	477872.537	797711.419
1108	145+55.20MPRW	72.78' LT	477872.621	797724.944
1109	146+21.11MPRW	60.00' LT	477860.250	797790.938
1110	146+31.62MPRW	60.00' LT	477860.316	797801.444
1111	146+31.62MPRW	0.00'	477800.317	797801.818
1112	146+22.21MPRW	0.00'	477800.258	797792.408
1113	146+22.21MPRW	60.00' RT	477740.259	797792.781
1114	146+14.58MPRW	60.00' RT	477740.212	797785.147
1115	145+90.07MPRW	65.20' RT	477734.858	797760.676
1116	145+72.22MPRW	101.39' RT	477698.562	797743.046
1117	145+69.85MPRW	126.74' RT	477673.192	797740.838
1118	145+72.04MPRW	141.40' RT	477658.549	797743.119
1119	144+49.69MPRW	134.58' RT	477664.605	797620.728
1120	144+48.13MPRW	124.17' RT	477675.009	797619.107
1121	144+40.47MPRW	107.78' RT	477691.347	797611.345
1122	144+36.87MPRW	81.69' RT	477717.418	797607.578
1123	143+96.73MPRW	60.00' RT	477738.856	797567.308
1124	143+94.63MPRW	60.00' RT	477738.843	797565.205
1125	143+94.63MPRW	0.00'	477798.842	797564.832
1126	143+91.59MPRW	60.00' LT	477858.822	797561.424
1127	145+63.48MPRW	60.00' LT	477859.892	797733.308
1128	145+64.16MPRW	88.70' RT	477711.204	797734.915
1129	145+88.89MPRW	60.00' RT	477740.052	797759.461
1130	144+17.00MPRW	60.00' RT	477738.983	797587.576
1131	144+41.73MPRW	81.31' RT	477717.832	797612.434

TLE Station & Offset Table				
Point No.	Station	Offset	Y	X
T1150	143+69.56MPRW	64.50' LT	477863.185	797539.365
T1151	143+91.56MPRW	64.50' LT	477863.322	797561.364
T1152	144+12.79MPRW	85.25' LT	477884.200	797582.462
T1153	144+09.05MPRW	110.28' LT	477909.206	797578.566
T1154	145+54.88MPRW	74.88' LT	477874.717	797724.617
T1155	146+22.21MPRW	62.00' RT	477738.259	797792.794
T1156	146+14.79MPRW	62.00' RT	477738.213	797785.369
T1157	145+91.44MPRW	66.96' RT	477733.112	797762.051
T1158	145+74.17MPRW	101.94' RT	477698.020	797745.007
T1159	145+71.86MPRW	126.69' RT	477673.260	797742.851
T1160	145+74.02MPRW	141.10' RT	477658.857	797745.095
T1161	144+37.56MPRW	108.64' RT	477690.469	797608.441
T1162	144+33.77MPRW	81.15' RT	477717.938	797604.472