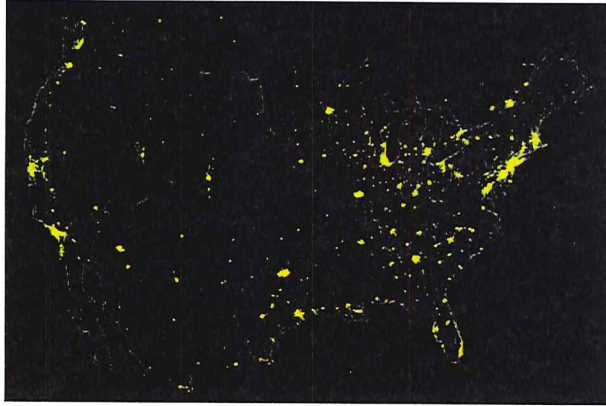


Cut Down Sky Glow

In the last few years, light pollution in North America has increased dramatically.



Satellite photo of North America, 1992

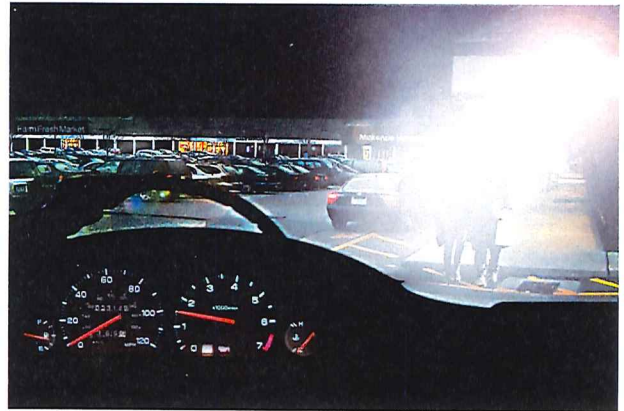
RAB Friendly Lighting can help preserve the beauty of the starry sky for future generations.



Satellite photo of North America, 1999

Reduce Annoying Glare

Drivers are often blinded by the glare from conventional lights.



RAB Friendly Lighting cuts off glare for safer more energy efficient lighting.



Friendly



Lighting

RAB products designed to minimize light trespass display this logo

RAB

222 Merry St



Issue Area 5

Parks and Open Space Recommendations

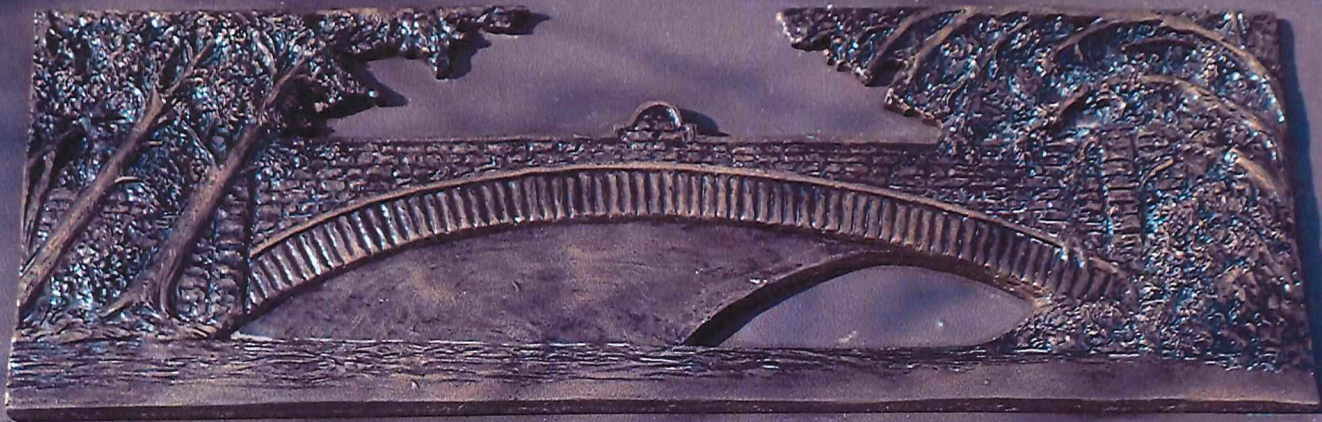
A major component of attracting and retaining residents in the central area is the availability of park and open space (See Map 13). The Marquette-Schenk-Atwood Neighborhood, not unlike other Isthmus neighborhoods, is deficient in parkland. The city-owned parkland in the neighborhood totals 12.1 acres, falling short of the 38.3 acres park standard for its population. Even with the addition of O'Keeffe playground (3.2 acres) and Yahara River Corridor (6.8 acres) the total parkland still falls short of the standard.

Being a central city neighborhood, with competition for use for its developed and undeveloped properties, poses a complex dilemma for acquiring parkland that would be reasonably accessible to the neighborhood. The neighborhood is looking for innovative ways to provide a wider range of recreational opportunities for its residents.

The top five park and open space recommendations are highlighted in bold:

- 1. Request that the City of Madison Transportation Division, in conjunction with Madison Parks Division, construct the proposed bicycle path in the East Rail Corridor. Outdoor features of benches, picnic tables, and lighting are important components in making it safe, usable, and attractive.**
- 2. Aggressively pursue parkland development at the juncture of the Yahara River and the East Rail Corridor (west of Thornton Avenue between Williamson and Main Street), Yahara River Corridor (from Lake Mendota to Lake Monona), and any other park opportunities along the East Rail Corridor.**





The Steensland Bridge was named after Norwegian Consul Halle Steensland who donated \$10,000 in 1904 for construction of a stone bridge over the Yahara River. The bridge was widened in 1950 reusing the original stone facing. The bridge was replaced with the reconstruction of East Washington Avenue in 2006. The plaque above, from the original Steensland Bridge, is displayed here as a connection to the rich past of the Yahara River Parkway. The design of the current bridge reflects the ideas of the "Prairie School" style of landscape architecture, as originally envisioned in the Yahara River Master Plan, prepared in the late 1800's by O.C. Simonds, and later updated in 1911 by John Nolen.