



PELTON PLACE
RESIDENCES



1956-2016

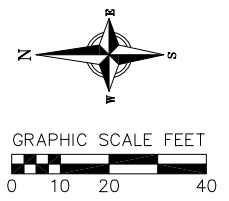
Balance in Creativity

Peloton Place Residences
Peloton Residences, LLC

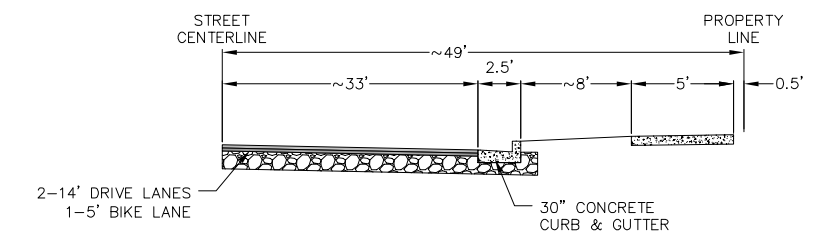
Urban Design Commission
Major Alteration Submittal

Jeff Davis
Angus-Young Associates
jeffd@angusyoung.com
608.284.8225

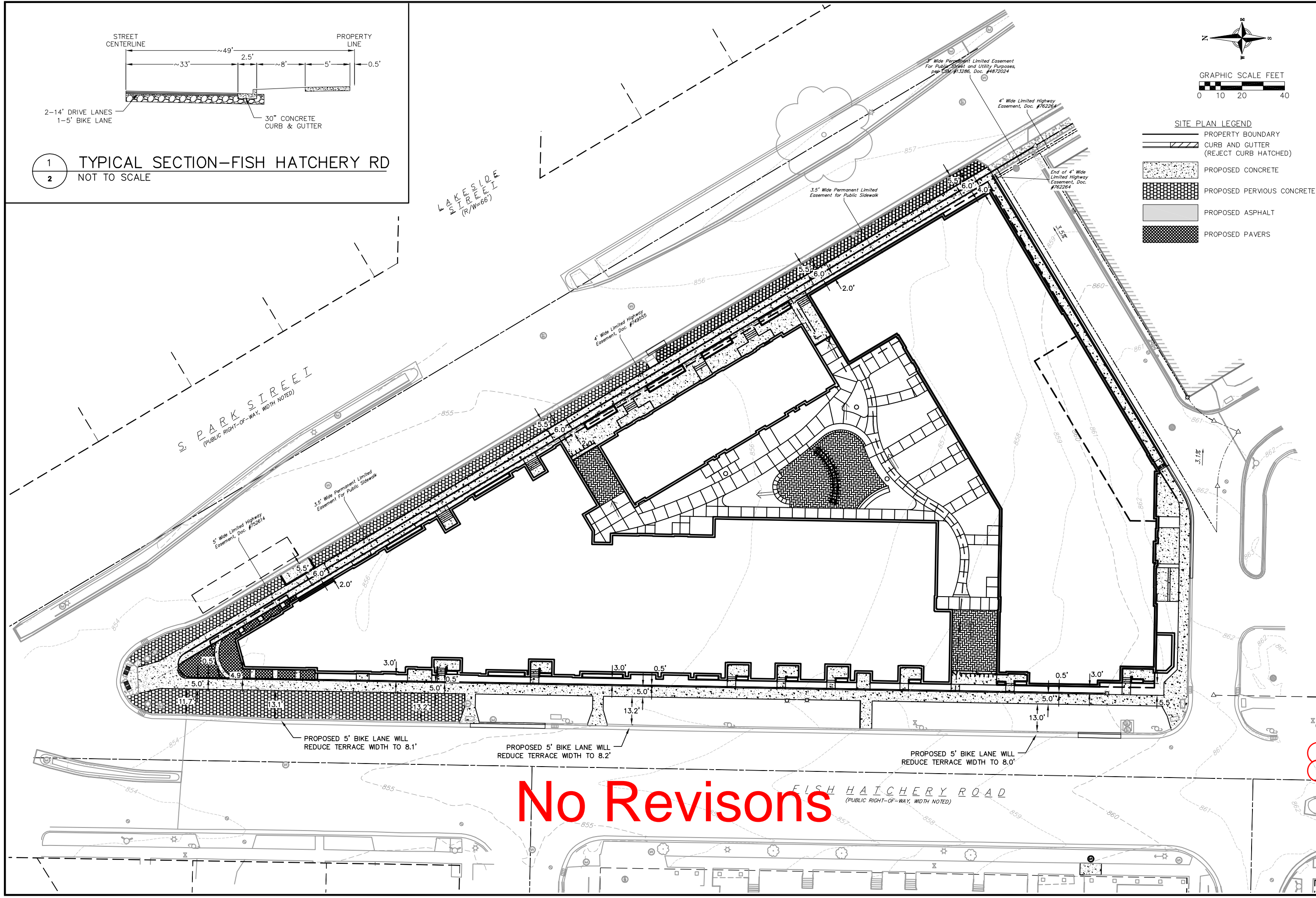
Jon Hepner
Peloton Residences, LLC
jon@twallenterprises.com
608.444-5552



- SITE PLAN LEGEND**
- PROPERTY BOUNDARY
 - CURB AND GUTTER (REJECT CURB HATCHED)
 - PROPOSED CONCRETE
 - PROPOSED PERVIOUS CONCRETE
 - PROPOSED ASPHALT
 - PROPOSED PAVERS



1 TYPICAL SECTION—FISH HATCHERY RD
 2 NOT TO SCALE



No Revisions

Site Plan Exhibit
 Peloton Residences
 City of Madison
 Dane County, Wisconsin

REVISIONS		REVISIONS	
NO.	DATE	NO.	DATE

SCALE AS SHOWN

DATE 08/18/2017
 10/30/2018

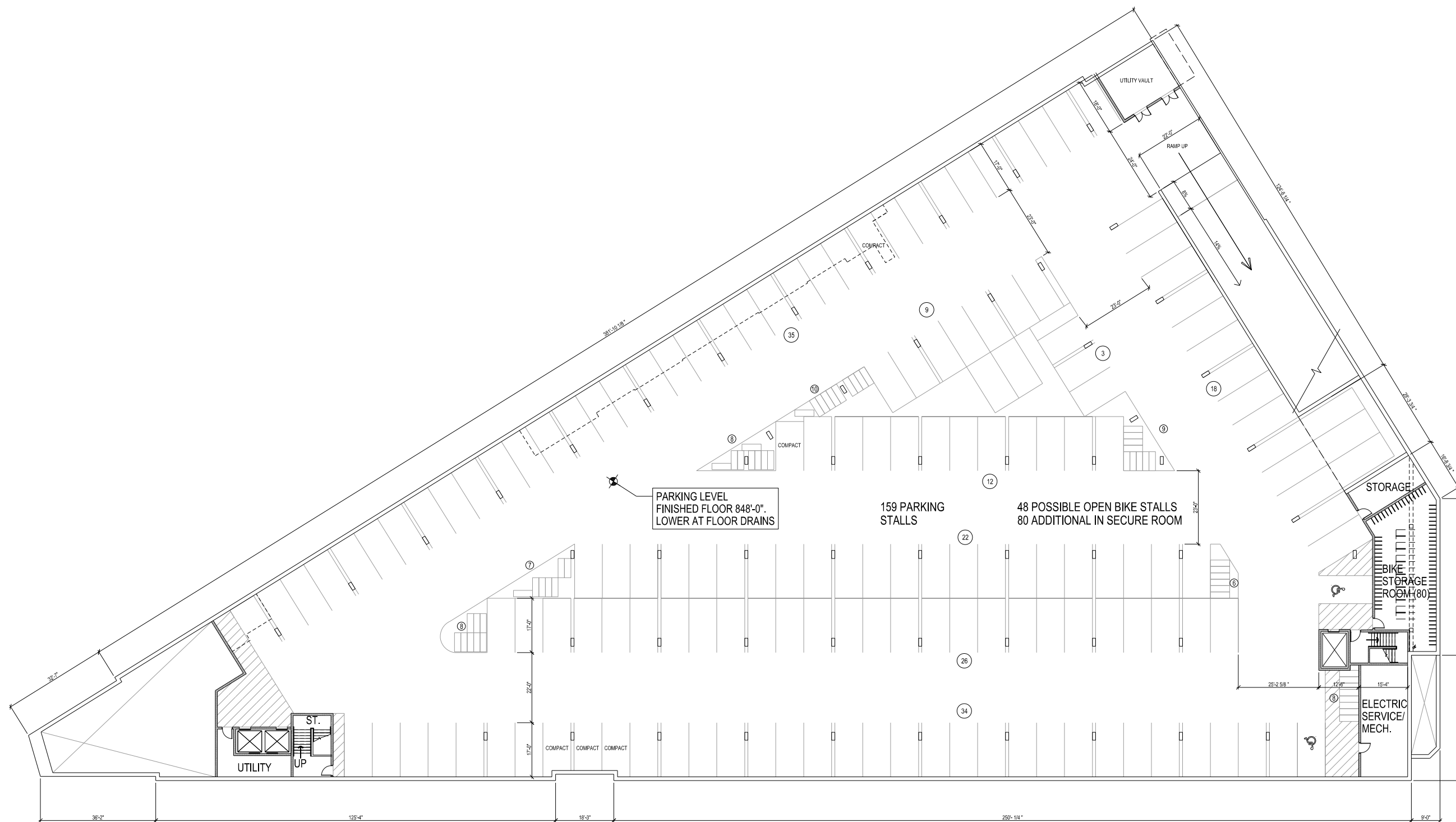
DRAFTER AMEA

CHECKED RKOL

PROJECT NO. 140245

SHEET 2 OF 2

DWG. NO.



PARKING LEVEL
FINISHED FLOOR 848'-0".
LOWER AT FLOOR DRAINS

159 PARKING
STALLS

48 POSSIBLE OPEN BIKE STALLS
80 ADDITIONAL IN SECURE ROOM

STORAGE

BIKE
STORAGE
ROOM (80)

ELECTRIC
SERVICE/
MECH.

UTILITY

ST.
UP

No Revisions



Due to electronic distribution, this drawing may not be printed to the scale indicated on the drawings. Do NOT use scale to determine dimensions or sizes.

PROJECT NUMBER	58830
APPROVED BY	XXX
REVIEWED BY	XXX
DRAWN BY	MBH
DATE	9/5/2017 11:06:23 AM

OVERALL
PARKING LEVEL
PLAN

A100

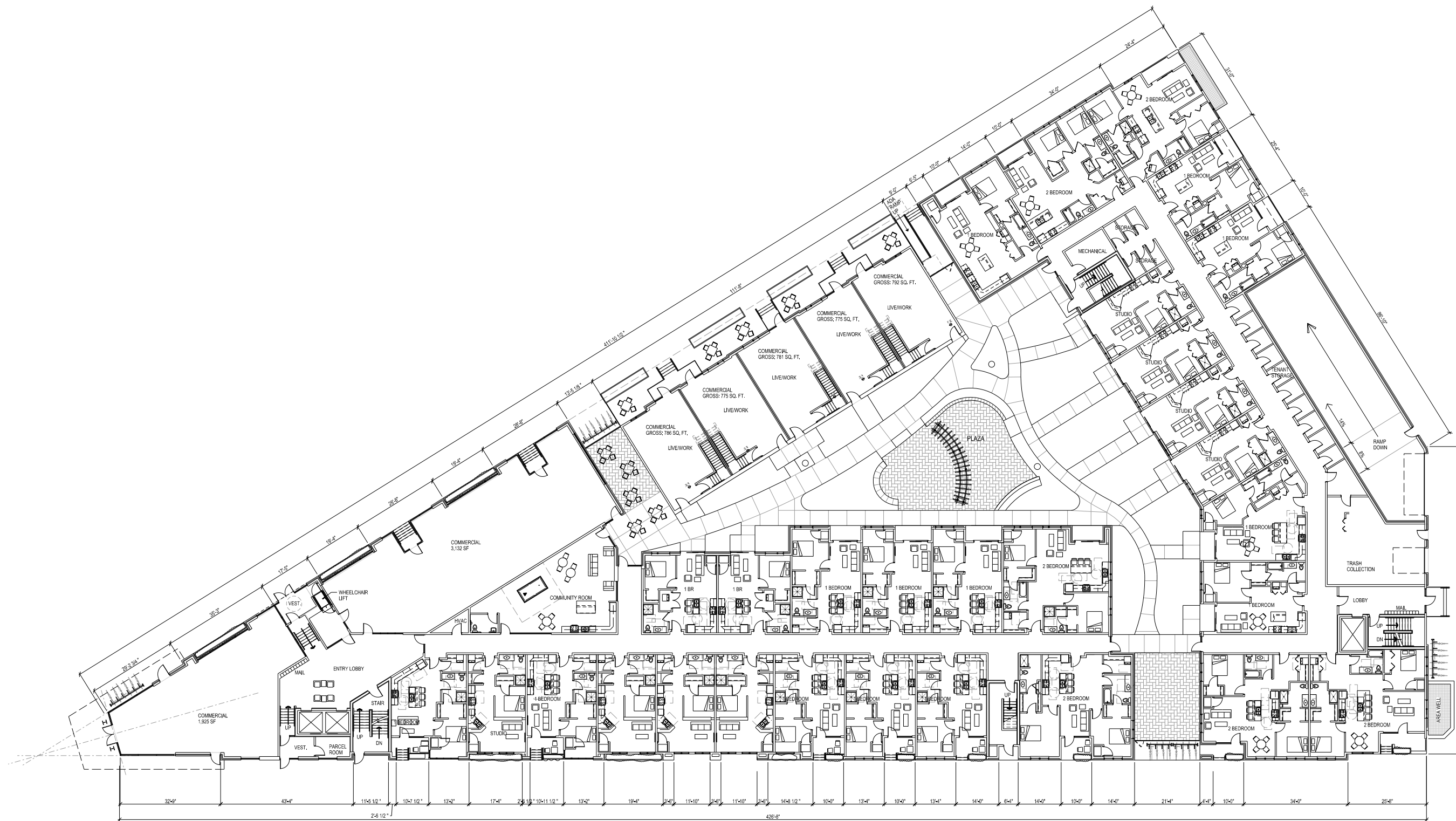
**PELTON PLACE RESIDENCES
MIXED USE DEVELOPMENT
PELTON RESIDENCES, LLC
MADISON, WISCONSIN**

Angus Young
Architecture | Engineering
Interiors | Landscape

Balance in Creativity

Janesville: 555 South Berg Street - Janesville, WI 53408 | P: 608.756.6326
Madison: 16 North Center Street - Madison, WI 53703 | P: 608.384.8225
www.angusyoung.com

ISSUANCES	
JDC INITIAL/FINAL APPROVAL/IPC - 05/10/2017	
JDC FINAL APPROVAL - 08/08/2017	
MAJOR ALTERATION APPROVAL - 10/30/2018	
REVISIONS	
Copyright © 2017	Angus Young Associates, Inc. All Rights Reserved



No Revisions

FIRST FLOOR PLAN
 SCALE: 1/16"=1'-0"

Due to electronic distribution, this drawing may not be printed to the scale indicated on the drawings. Do NOT use scale to determine dimensions or sizes.

PROJECT NUMBER	59830
APPROVED BY	XXX
REVIEWED BY	XXX
DRAWN BY	MBH
DATE	9/20/2017 10:57:17 AM

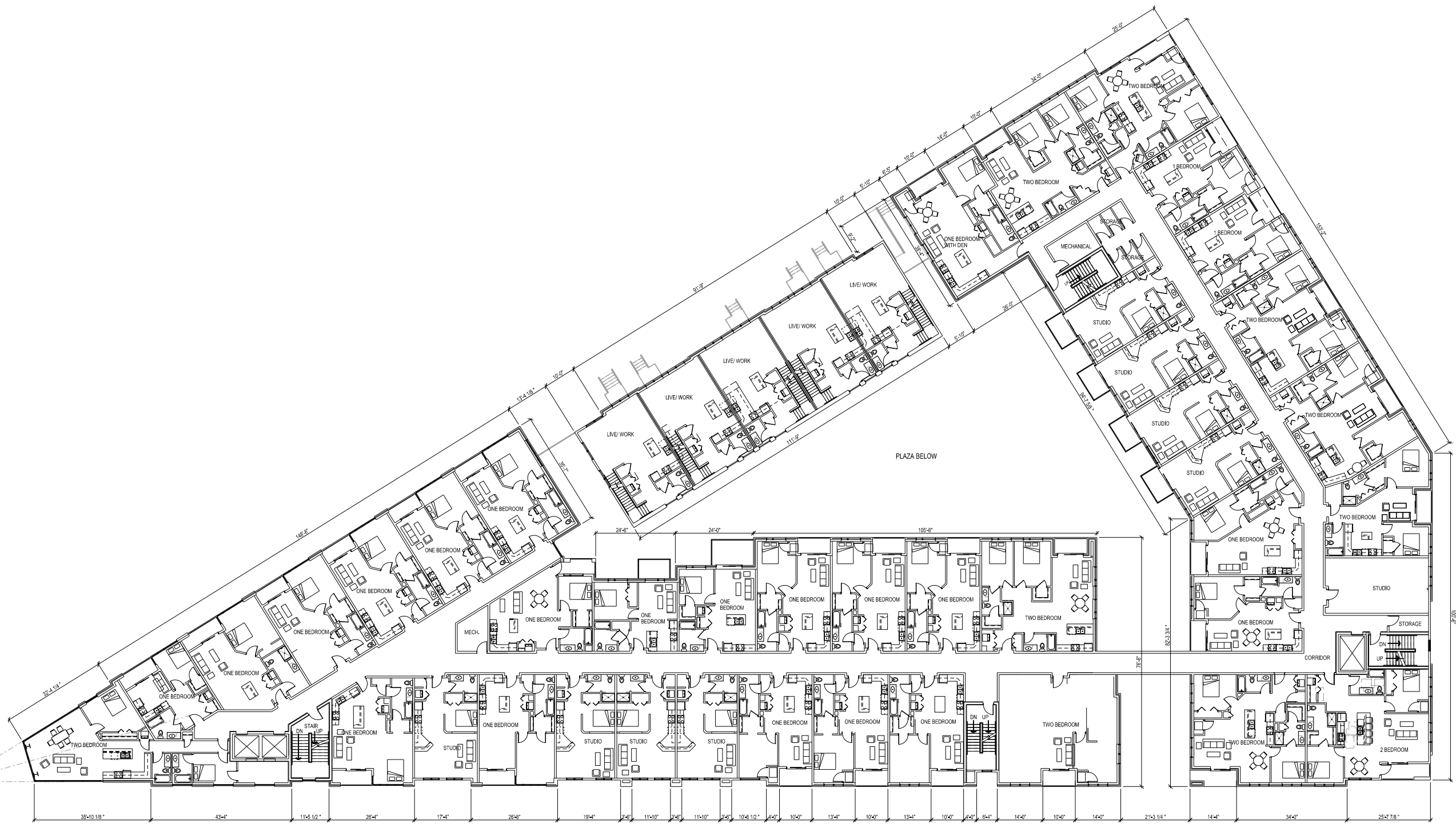
PELTON PLACE RESIDENCES
MIXED USE DEVELOPMENT
PELTON RESIDENCES, LLC
MADISON, WISCONSIN

Angus Young
 Architecture | Engineering
 Interiors | Landscape
 Balance in Creativity
 Janesville: 555 South Blue Street - Janesville, WI 53408 | Ph. 608.756.3236
 Madison: 16 North Carroll Street - Madison, WI 53703 | Ph. 608.384.8223
 www.angusyoung.com

ISSUANCES	UDC INITIAL/FINAL APPROVAL/FC - 05/10/2017
REVISIONS	UDC FINAL APPROVAL - 08/22/2017
	MAJOR ALTERATION APPROVAL - 10/30/2018
Copyright	© 2017 Angus-Young Associates, Inc. All Rights Reserved

A101

PRELIMINARY - NOT FOR CONSTRUCTION




SECOND FLOOR PLAN
 SCALE: 1/16"=1'-0"

No Revisions

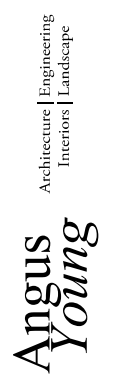
Due to electronic distribution, this drawing may not be printed to the scale indicated on the drawings. Do NOT use scale to determine dimensions or sizes.

PROJECT NUMBER	58930
APPROVED BY	XXX
REVIEWED BY	XXX
DRAWN BY	MBH
DATE	9/5/2017 10:57:21 AM

OVERALL SECOND FLOOR PLAN

A102

PELTON PLACE RESIDENCES
MIXED USE DEVELOPMENT
PELTON RESIDENCES, LLC
MADISON, WISCONSIN

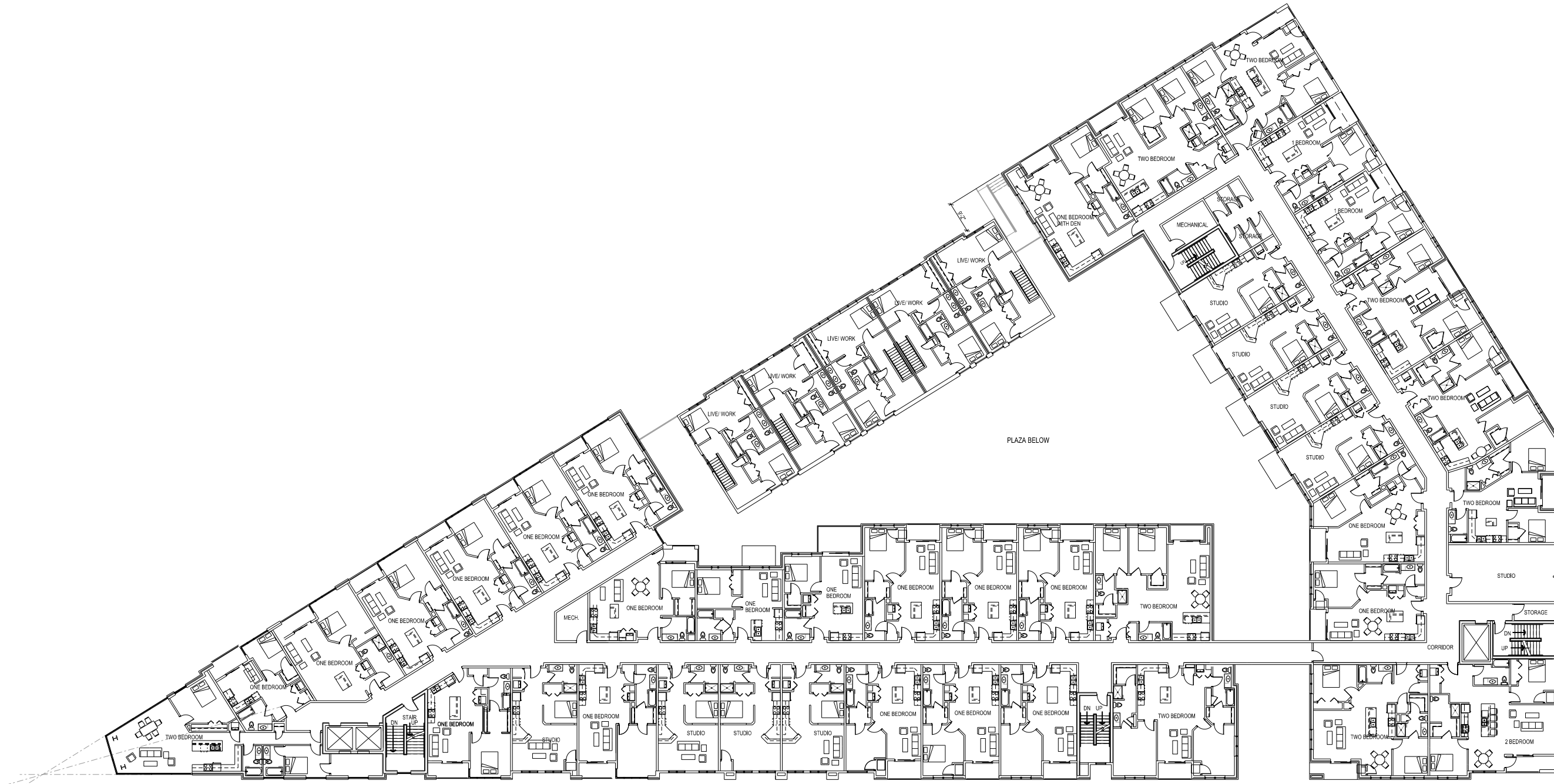


Architecture | Engineering
Interiors | Landscape

Balance in Creativity
 Janesville: 555 South Berg Street - Janesville, WI 53408 | P: 608.756.8136
 Madison: 16 North Center Street - Madison, WI 53703 | P: 608.324.1225
 www.angusyoung.com

ISSUANCES	UDC INITIAL/FINAL APPROVAL/PC - 05/10/2017
	UDC FINAL APPROVAL - 08/02/2017
	MAJOR ALTERATION APPROVAL - 10/30/2018
REVISIONS	

Copyright © 2017 Angus Young Associates, Inc. All Rights Reserved



NORTH
THIRD FLOOR PLAN
 SCALE: 1/16"=1'-0"

No Revisions

Due to electronic distribution, this drawing may not be printed to the scale indicated on the drawings. Do NOT use scale to determine dimensions or sizes.

ISSUANCES	REVISIONS
JDC INITIAL/FINAL APPROVAL/PC - 05/10/2017	
DJC FINAL APPROVAL - 06/20/17	
MAJOR ALTERATI APPROVAL - 10/30/2018	

Angus Young
 Architecture | Engineering
 Interiors | Landscape

Balance in Creativity

Janesville: 555 South Berg Street - Janesville, WI 53508 | Ph. 608.756.5205
 Madison: 16 North Center Street - Madison, WI 53703 | Ph. 608.384.1235
 www.angusyong.com

**PELTON PLACE RESIDENCES
 MIXED USE DEVELOPMENT
 PELTON RESIDENCES, LLC
 MADISON, WISCONSIN**

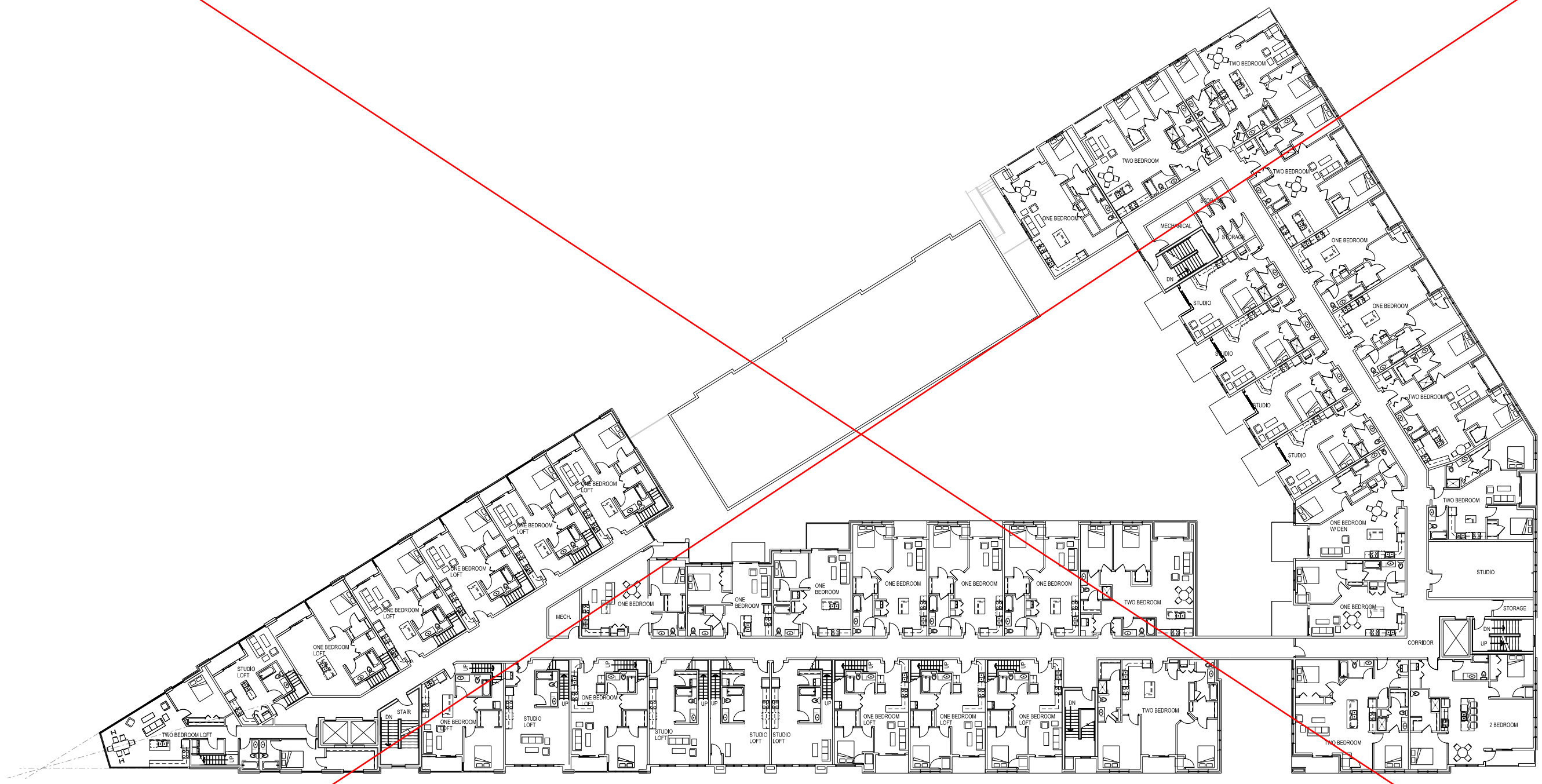
PROJECT NUMBER	58830
APPROVED BY	XXX
REVIEWED BY	XXX
DRAWN BY	MBH
DATE	9/5/2017 11:57:25 AM

OVERALL
 THIRD FLOOR
 PLAN

A103

PRELIMINARY - NOT FOR CONSTRUCTION

Copyright © 2017 Angus+Young Associates, Inc. All Rights Reserved




 NORTH
FOURTH FLOOR PLAN
 SCALE: 1/16"=1'-0"


This Sheet Replaced

Due to electronic distribution, this drawing may not be printed to the scale indicated on the drawings. Do NOT use scale to determine dimensions or sizes.

PROJECT NUMBER
 58830
 APPROVED BY
 XXX
 REVIEWED BY
 XXX
 DRAWN BY
 MBH
 9/5/2017 11:57:29 AM

PELTON PLACE RESIDENCES
MIXED USE DEVELOPMENT
PELTON RESIDENCES, LLC
MADISON, WISCONSIN

Angus Young
 Architecture | Engineering
 Interiors | Landscape
 Balance in Creativity
Janesville: 555 South Berg Street - Janesville, WI 53508 | P: 608.756.6106
 Madison: 16 North Center Street - Madison, WI 53703 | P: 608.326.6125
 www.angusyoung.com

ISSUANCES	REVISIONS
UDC INITIAL/FINAL APPROVAL/PC - 05/10/2017	
UDC FINAL APPROVAL - 09/06/2017	

Copyright © 2017
 Angus+Young Associates, Inc. All Rights Reserved

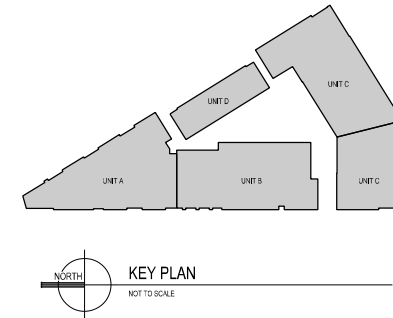
SCALE: 1/8"=1'-0"
PLOTTER: BY: ppp

ORIGINAL SIZE: 30" x 42"
X:\2016\11\16\11161047.dwg



Alteration

OVERALL FOURTH FLOOR PLAN
SCALE: 1/8"=1'-0"



KEY PLAN
NOT TO SCALE

PRELIMINARY - NOT FOR CONSTRUCTION

Due to electronic distribution, this drawing may not be printed to the scale indicated on the drawings. Do NOT use scale to determine dimensions or sizes. Due to electronic distribution, this drawing may not be printed to the scale indicated on the drawings. Do NOT use scale to determine dimensions or sizes.

PROJECT NUMBER: 12/12/2018 11:40:47 AM

ISSUED BY: JAC

APPROVED BY: JAC

REVIEWED BY: JAC

DRAWN BY: PFP

OVERALL FOURTH FLOOR PLAN

PELTON RESIDENCES
T. WALL ENTERPRISES MANAGEMENT, LLC
PELTON RESIDENCES, LLC
MADISON, WI

Angus Young
Architecture | Engineering
Interiors | Landscape

T. Wall Enterprises
Creating Places Where People Interact

JANESVILLE | MADISON
www.angusyoung.com

Copyright © 2016 Angus Young Associates, Inc. All Rights Reserved

REVISIONS
ISSUANCES
UDC INITIAL APPROVAL/PC - 05/10/2017
REVISION APPROVAL/PC - 05/10/2017
MAJOR ALTERATION APPROVAL - 10/30/2018

A204



NORTH
 FIFTH FLOOR PLAN
 SCALE: 1/16"=1'-0"

This Sheet Replaced

Due to electronic distribution, this drawing may not be printed to the scale indicated on the drawings. Do NOT use scale to determine dimensions or sizes.

PROJECT NUMBER	5830
APPROVED BY	XXX
REVIEWED BY	XXX
DRAWN BY	MBH
	9/5/2017 11:47:59 AM

PELTON PLACE RESIDENCES
MIXED USE DEVELOPMENT
PELTON RESIDENCES, LLC
MADISON, WISCONSIN

Angus Young
 Architecture | Engineering
 Interiors | Landscape
 Balance in Creativity
 Janesville: 555 South Berg Street | Janesville, WI 53508 | Ph: 608.756.2326
 Madison: 16 North Court Street | Madison, WI 53703 | Ph: 608.756.3225
 www.angusyoung.com

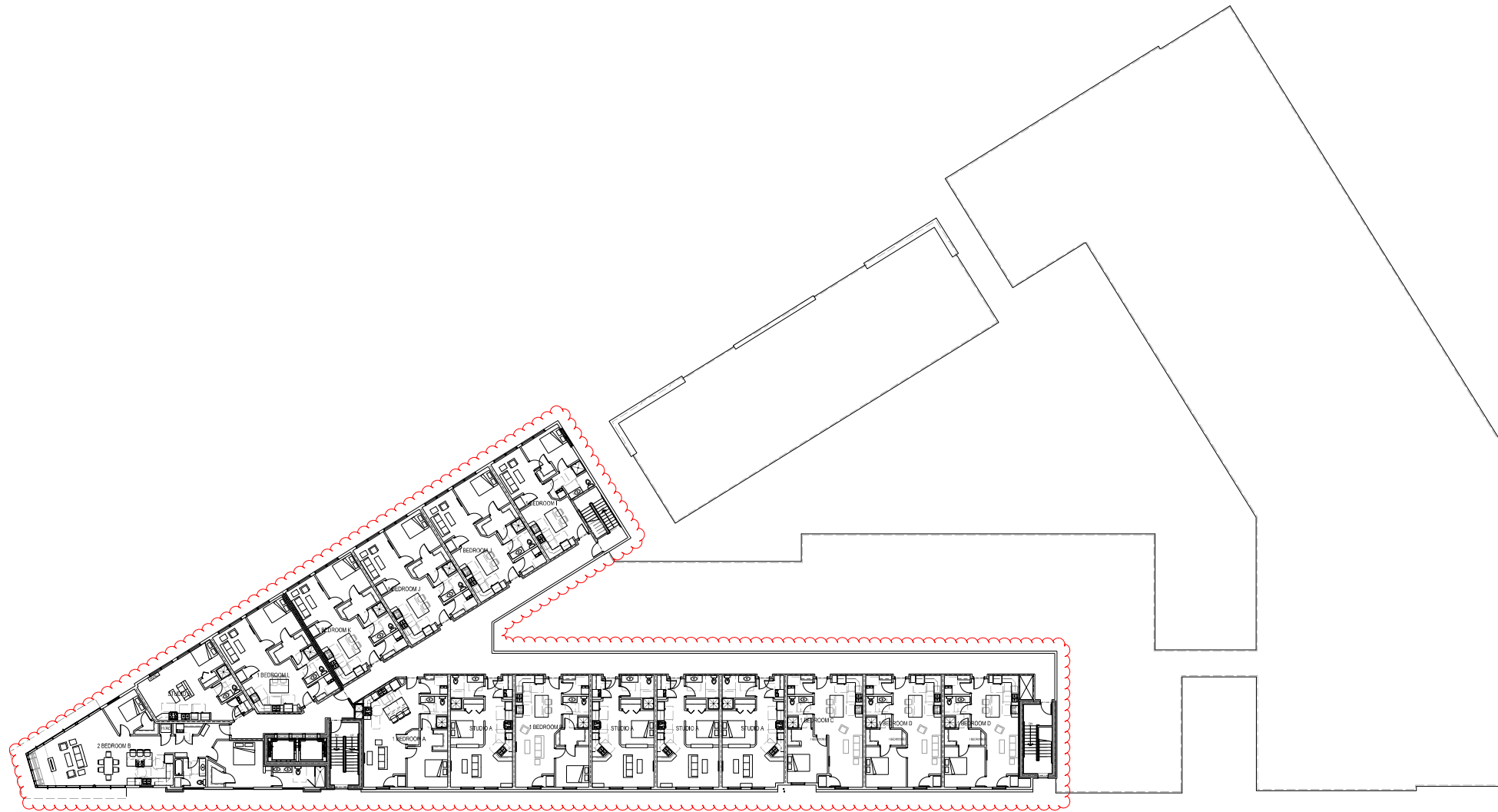
ISSUANCES	REVISIONS
UDC INITIAL/FINAL APPROVAL/PG - 05/10/2017	
UDC FINAL APPROVAL - 09/06/2017	
Copyright © 2017	Angus Young Associates, Inc. All Rights Reserved

OVERALL
 FOURTH FLOOR
 PLAN

A105

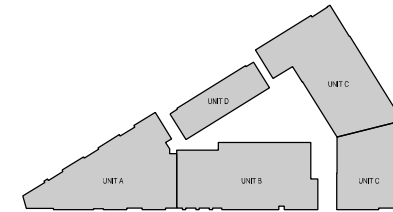
SCALE: 1/8"=1'-0"
PLOTTER: BY: ppp

ORIGINAL SIZE: 30" x 42"
X:\2016\11\14\122\A1\A205.dwg



Alteration

OVERALL FIFTH FLOOR PLAN
SCALE: 1/8"=1'-0"



KEY PLAN
NOT TO SCALE

PRELIMINARY - NOT FOR CONSTRUCTION

Due to electronic distribution, this drawing may not be printed to the scale indicated on the drawings. Do NOT use scale to determine dimensions or sizes. Do NOT use scale to determine dimensions or sizes.

ISSUANCES	REVISIONS
UDC INITIAL FINAL APPROVAL/PC - 05/10/2017	
UDC INITIAL APPROVAL/PC - 05/10/2017	
MAJOR ALTERATION APPROVAL - 10/30/2018	

Angus Young
Architecture | Engineering
Interiors | Landscape

Balance in Creativity
JANESVILLE | MADISON
www.angusyoung.com

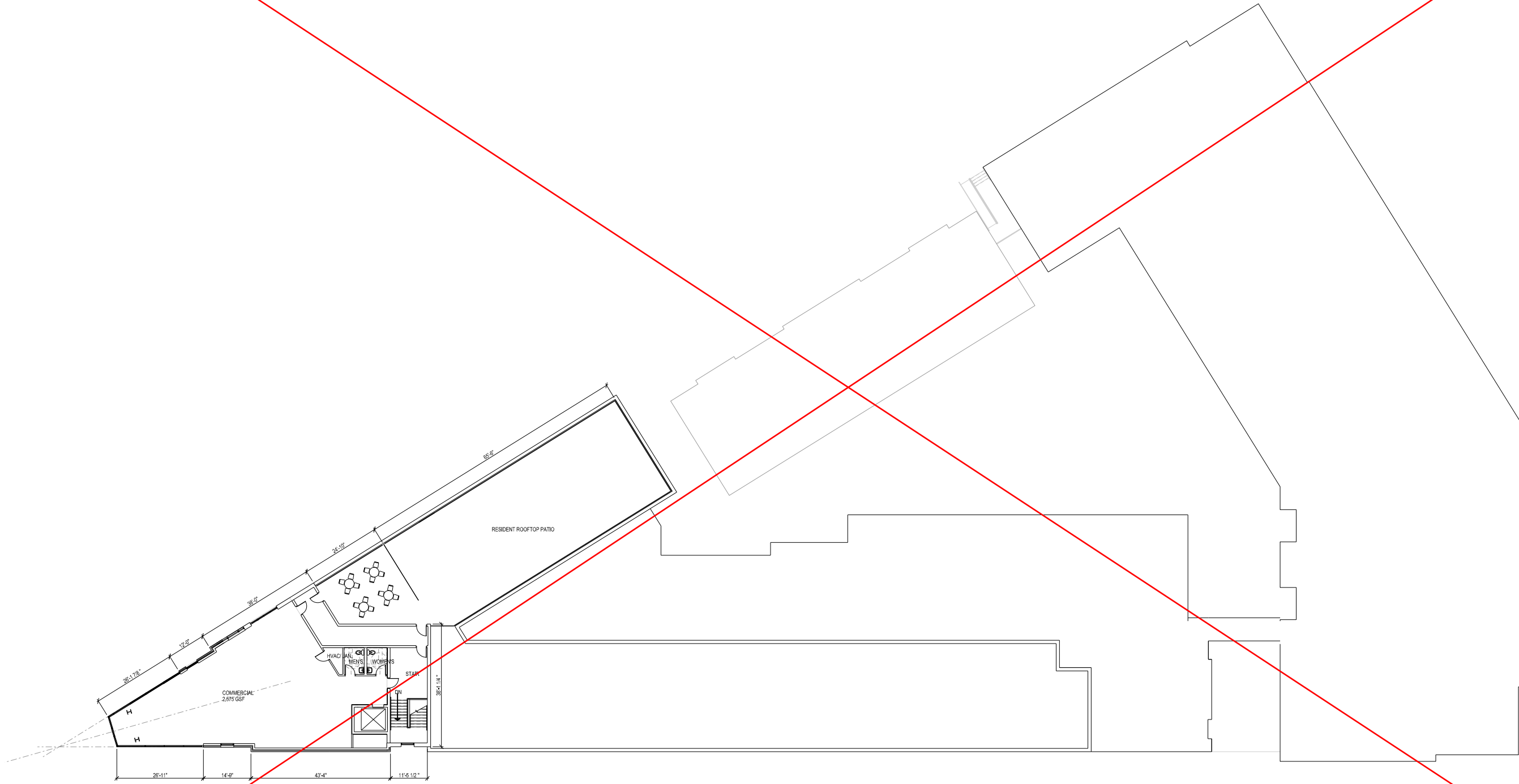
T. Wall Enterprises
Creating Places Where People Interact

PELTON RESIDENCES
T. WALL ENTERPRISES MANAGEMENT, LLC
PELTON RESIDENCES, LLC
MADISON, WI

PROJECT NUMBER: A205
DESIGNED BY: JAC
APPROVED BY: JAC
REVIEWED BY: JAC
DRAWN BY: PFP
12/20/18 11:41:22 AM

A205

Copyright © 2018 Angus-Young Associates, Inc. All Rights Reserved



NORTH
 SIXTH FLOOR PLAN
 SCALE: 1/16"=1'-0"

This Sheet Replaced

Due to electronic distribution, this drawing may not be printed to the scale indicated on the drawings. Do NOT use scale to determine dimensions or sizes.

PROJECT NUMBER
 58330
 APPROVED BY
 XXX
 REVIEWED BY
 XXX
 DRAWN BY
 JAD
 9/5/2017 11:57:35 AM

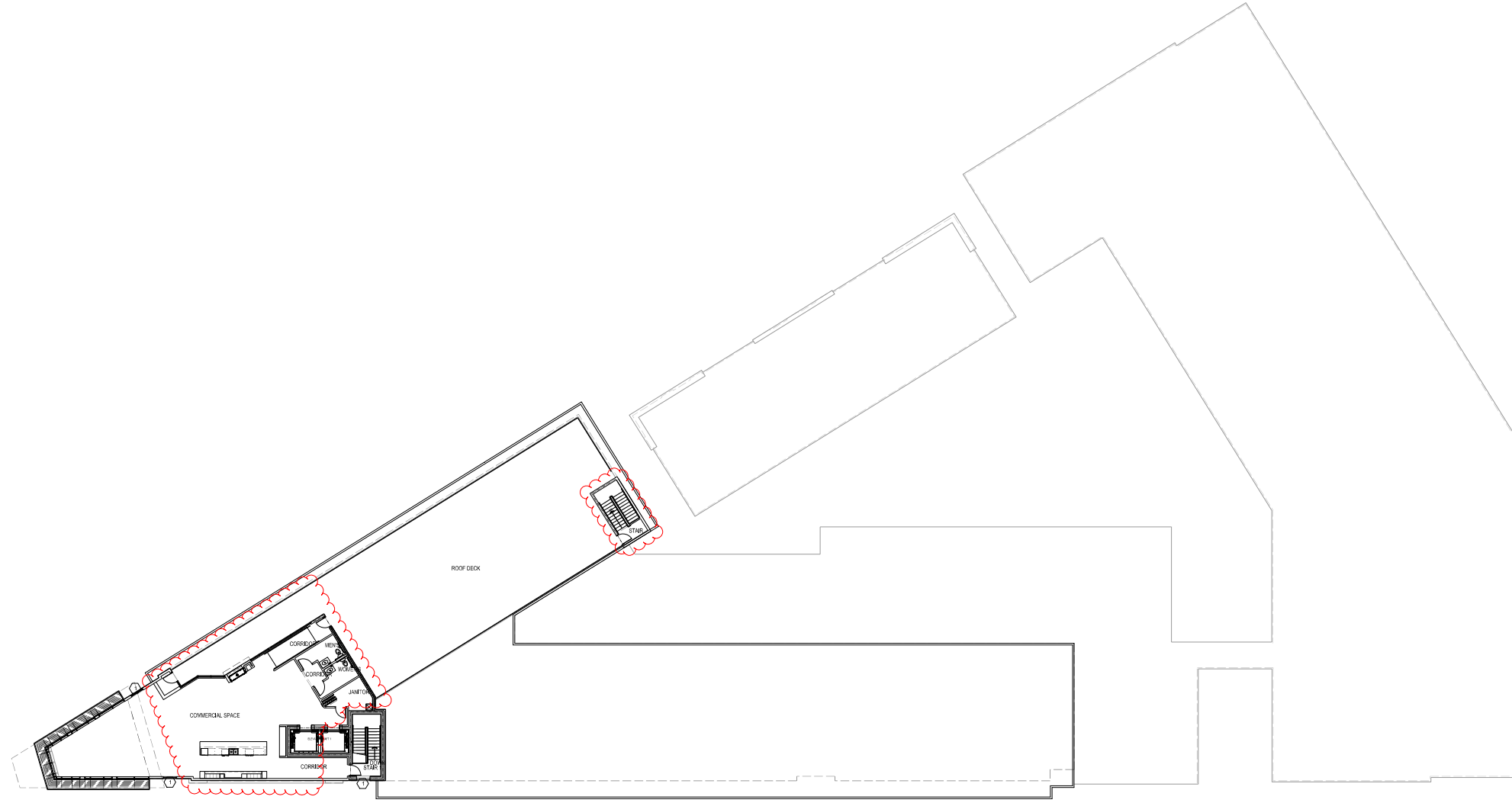
PELTON PLACE RESIDENCES
 MIXED USE DEVELOPMENT
 PELTON RESIDENCES, LLC
 MADISON, WISCONSIN

Angus Young
 Architecture | Engineering
 Interiors | Landscape
 Balance in Creativity
 Janesville: 555 South Berg Street - Janesville, WI 53508 | P: 608.756.6326
 Madison: 16 North Center Street - Madison, WI 53703 | P: 608.328.6225
 www.angusyoung.com

ISSUANCES	REVISIONS
UDC INITIAL/FINAL APPROVAL/PG - 05/10/2017	
UDC FINAL APPROVAL - 09/06/2017	
Copyright © 2017	Angus Young Associates, Inc. All Rights Reserved

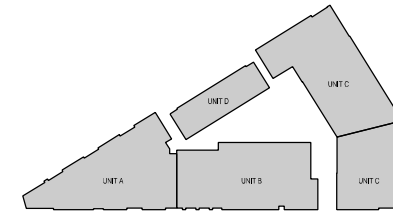
SCALE: 1/8"=1'-0"
PLOTTER: BY: ppp

ORIGINAL SIZE: 30" x 42"
X:\2016\11\14\151 AM\1114151.dwg



Alteration

OVERALL SIXTH FLOOR PLAN
SCALE: 1/8"=1'-0"



KEY PLAN
NOT TO SCALE

PRELIMINARY - NOT FOR CONSTRUCTION

Due to electronic distribution, this drawing may not be printed to the scale indicated on the drawings. Do NOT use scale to determine dimensions or sizes. Do NOT use scale to determine dimensions or sizes.

PROJECT NUMBER: 12/20/18 11:41:51 AM
 DRAWN BY: PFP
 CHECKED BY: PFP
 APPROVED BY: JAC
 OVERALL SIXTH FLOOR PLAN

PELTON RESIDENCES
 T. WALL ENTERPRISES MANAGEMENT, LLC
 PELTON RESIDENCES, LLC
 MADISON, WI

T. Wall Enterprises
 Creating Places Where People Interact

Angus Young
 Architecture | Engineering
 Interiors | Landscape
 Balance in Creativity
 JAMESVILLE | MADISON
 www.angusyoung.com

ISSUANCES	REVISIONS
UDC INITIAL APPROVAL/PC - 05/10/2017	
UPC INITIAL APPROVAL/PC - 05/10/2017	
MAJOR ALTERATION APPROVAL - 10/30/2018	

Copyright © 2018 Angus-Young Associates, Inc. All Rights Reserved

A206

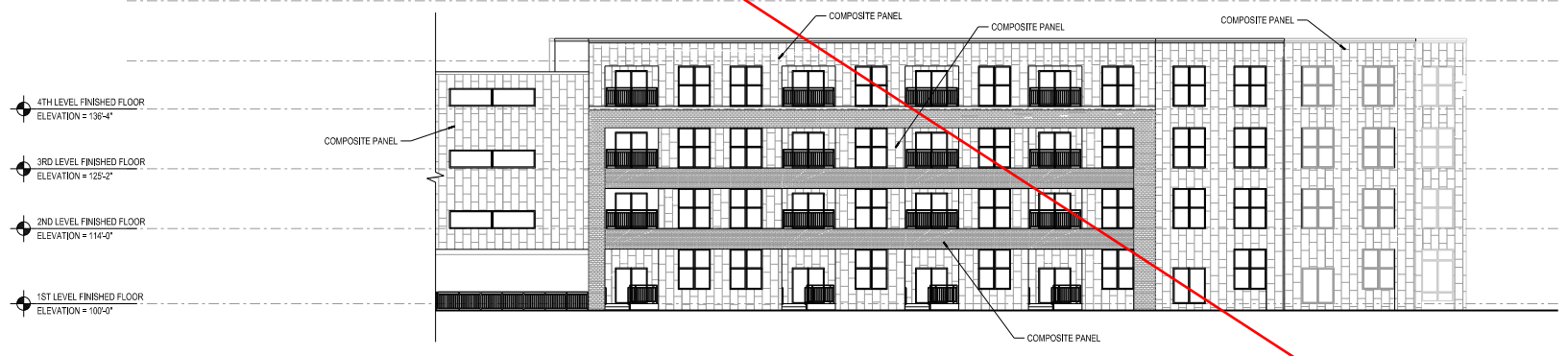
ORIGINAL SIZE = 24" x 36"
X:\98030\04\98030\A401.dgn
SCALE: 1/16" = 1'-0"
PLOTTED BY: JWD



01 PARK STREET ELEVATION (WEST)
A401 SCALE: 1/16" = 1'-0"



02 FISH HATCHERY STREET ELEVATION (EAST)
A401 SCALE: 1/16" = 1'-0"



03 WEST FACING COURTYARD ELEVATION
A401 SCALE: 1/16" = 1'-0"

This Sheet Replaced

NOTE: FIXTURE TYPES DETNOTED WITH (X) . SEE ELECTRICAL FIXTURE SCHEDULE FOR TYPES.

PRELIMINARY - NOT FOR CONSTRUCTION

PROJECT NUMBER 59030	ISSUANCES UDC INITIAL FINAL APPROVAL / PC - 05/10/2017 UDC FINAL APPROVAL - 08/06/2017	REVISIONS
APPROVED BY XXX		
REVIEWED BY XXX		
DRAWN BY EMH		
9/5/2017 4:00:13 PM		

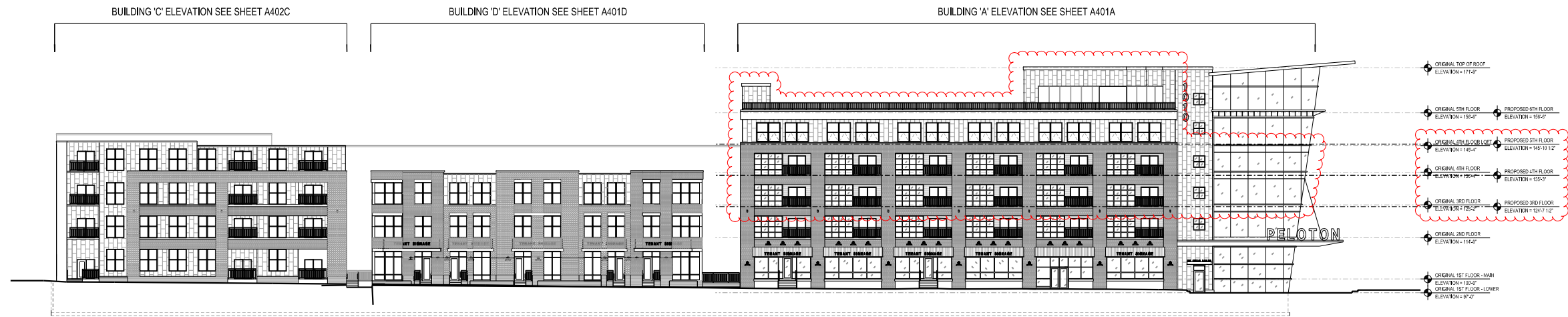
PELOTON PLACE RESIDENCES
 MIXED USE DEVELOPMENT
 PELOTON RESIDENCES, LLC
 MADISON, WISCONSIN

Angus Young
 Architecture | Engineering
 Interiors | Landscape
 Balance in Creativity
 Janesville: 535 South River Street - Janesville, WI 53448 | Ph: 608.756.3256
 Madison: 16 North Carroll Street - Madison, WI 53703 | Ph: 608.284.8225
 www.angusyoung.com

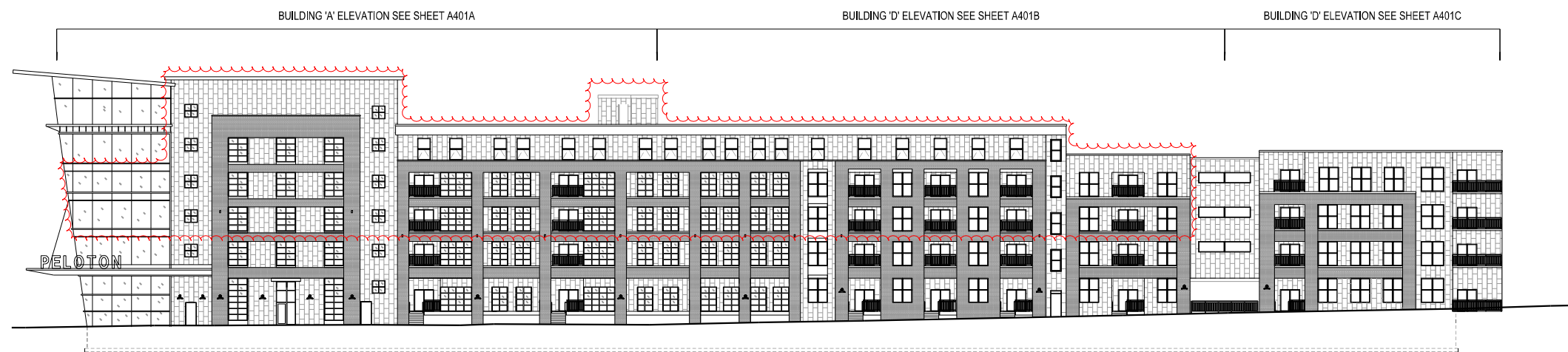
Due to electronic distribution, this drawing may not be printed to the scale indicated on the drawings. Do NOT use scale to determine dimensions or sizes.
 Due to electronic distribution, this drawing may not be printed to the scale indicated on the drawings. Do NOT use scale to determine dimensions or sizes.

Copyright © 2017
 Angus-Young Associates, Inc. All Rights Reserved

A401

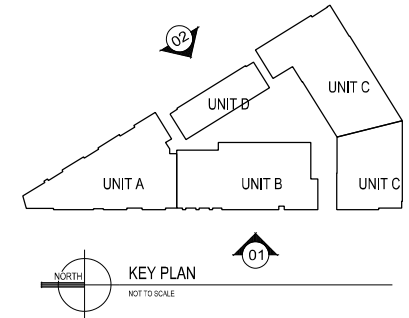


02 OVERALL EAST ELEVATION (PARK STREET)
A401 SCALE: 1/8" = 1'-0"



01 OVERALL WEST ELEVATION (FISH HATCHERY ST.)
A401 SCALE: 1/8" = 1'-0"

Alteration



Due to electronic distribution, this drawing may not be printed to the scale indicated on the drawings. Do NOT use scale to determine dimensions or sizes.

PROJECT NUMBER: 12/22/18 11:42:22 AM

ISSUANCES:
 1. UDC INITIAL APPROVAL/PC - 05/10/2017
 2. ARCHITECTURE/ENGINEERING/INTEGRITY/LANDSCAPE
 3. MAJOR ALTERATION APPROVAL - 10/30/2018

REVISIONS:

PELTON RESIDENCES
 T. WALL ENTERPRISES MANAGEMENT, LLC
 PELTON RESIDENCES, LLC
 MADISON, WI

Balance in Creativity
 JAMESVILLE | MADISON
 www.angusyong.com

Angus Young
 Architecture | Engineering
 Interiors | Landscape

T. Wall Enterprises
 Creating Places Where People Interact

ORIGINAL SIZE: 30" x 42"
 XREF: 20180418.dwg
 PLOTTED BY: pmp
 SCALE: 1/8" = 1'-0"

OVERALL EAST AND WEST EXTERIOR BUILDING ELEVATIONS

PRELIMINARY - NOT FOR CONSTRUCTION

A401



This Sheet Replaced

RENDERED AND SHADOWED ELEVATIONS - Park St.



Alteration

RENDERED AND SHADOWED ELEVATIONS - Park St.



This Sheet Replaced

RENDERED AND SHADOWED ELEVATIONS - Fish Hatch



Alteration

RENDERED AND SHADOWED ELEVATIONS - Fish Hatch



This Sheet Replaced

PROPOSED PERSPECTIVE RENDERINGS - Prow



Alteration

PROPOSED PERSPECTIVE RENDERINGS - Prow



This Sheet Replaced

PROPOSED PERSPECTIVE RENDERINGS - Fish Hatchery



Alteration

PROPOSED PERSPECTIVE RENDERINGS - Fish Hatchery