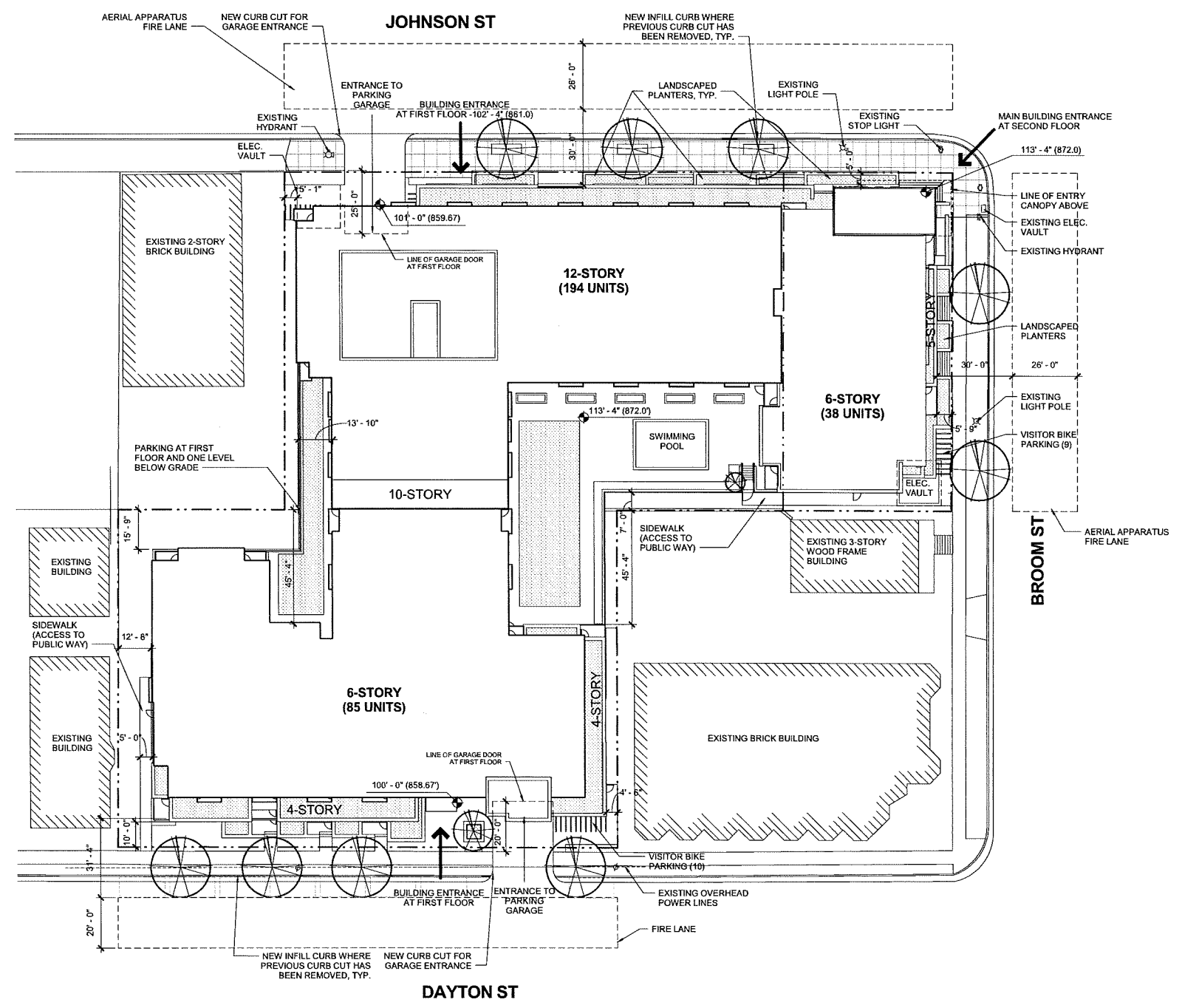


Consultants:

Notes:



PRELIMINARY
NOT FOR CONSTRUCTION

Date	Issuance/Revisions	Symbol
02/26/13	AMENDMENT TO LAND USE APPLICATION	
02/13/13	LAND USE APPLICATION RE-SUBMITTAL	
01/02/13	LAND USE APPLICATION SUBMITTAL	

JOHNSON DAYTON APARTMENTS
Dayton Square

415 W Johnson Street, 226 N
Broom Street, 424 W Dayton
Street

ARCHITECTURAL SITE PLAN

Project Number 2012.36.00	Drawing No. C102
Drawn By: PLJ	

PROJECT NORTH TRUE NORTH
1 ARCHITECTURAL SITEPLAN
1" = 20'-0"

Consultants:



Notes:

JOHNSON DAYTON APARTMENTS - PLANT LIST

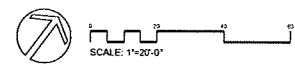
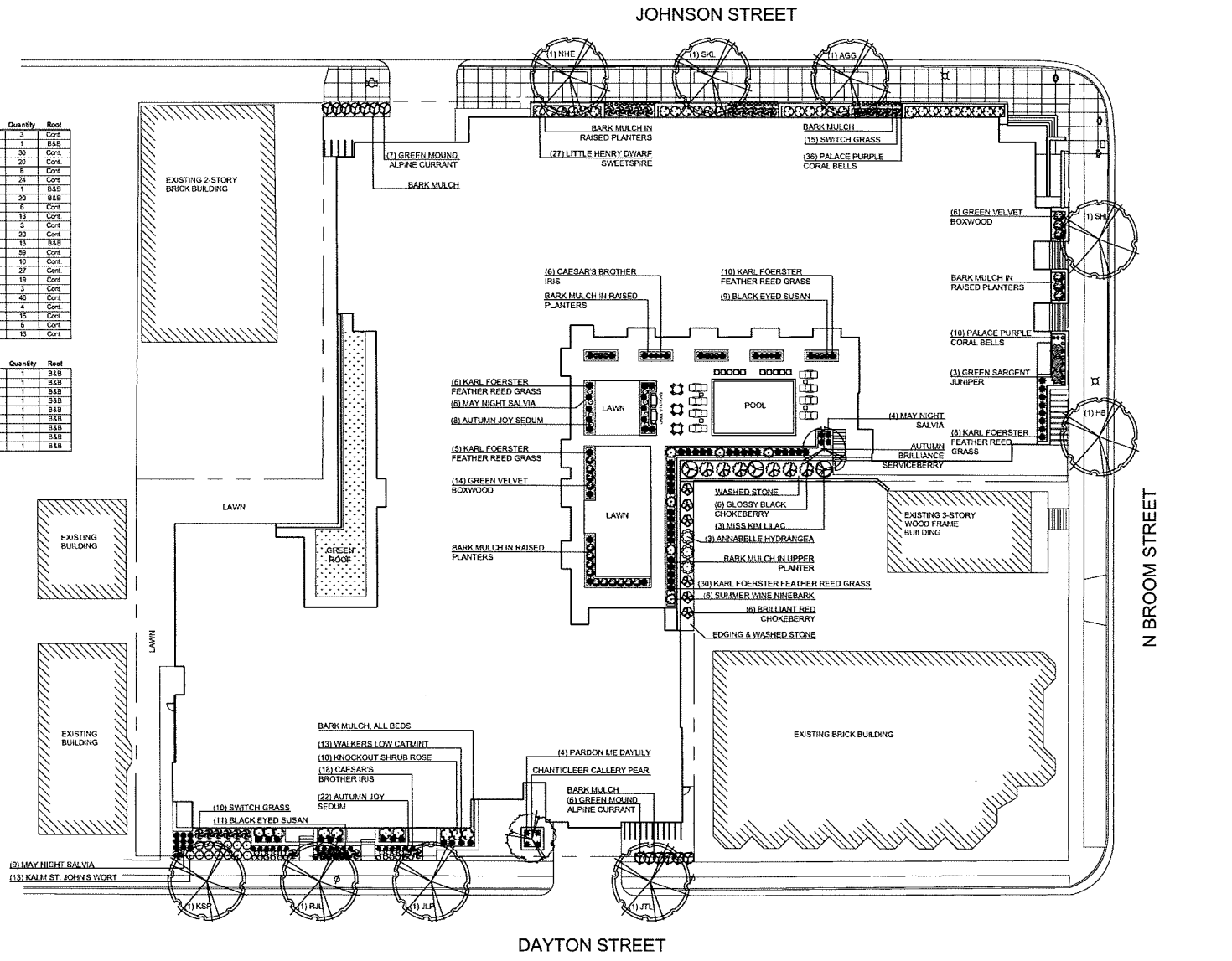
Common Name	Scientific Name	Size	Quantity	Root
American Hydrangea	Hydrangea arborescens 'Annabelle'	#5	3	Cont
Autumn Brilliance Spirea	Amelanchier x grandiflora 'Autumn Brilliance'	#	7	BBB
Autumn Joy Sedum	Sedum spectabile 'Autumn Joy'	#1	30	Cont
Black Eye Susan	Rudbeckia 'Vasey's Lone Star'	#1	20	Cont
Bright Red Chokeberry	Aronia arbutifolia 'Brilliant Red'	#5	6	Cont
Caesar's Brother Iris	Iris sibirica 'Caesar's Brother'	#1	24	Cont
Chanticleer Gallery Pear	Pyrus calleryana 'Chanticleer'	#	1	BBB
Emerald Abutilon	Thuja occidentalis 'Emerald'	#	30	BBB
Groovy Black Chokeberry	Aronia melanocarpa var. elata	#5	6	Cont
Green Mound Alpine Currant	Rosa alpinum 'Green Mound'	#3	13	Cont
Green Sargent Juniper	Juniperus chinensis 'Sargentii Virens'	#2	3	Cont
Green Velvet Boxwood	Buxus micro var. 'Common Green Velvet'	#3	20	Cont
Kean St. Johns Wort	Hypericum perforatum	#2	13	BBB
Karl Foerster Reed Grass	Calamagrostis x acutiflora 'Karl Foerster'	#3	50	Cont
Knockout Shrub Rose	Rosa 'Knockout'	#3	10	Cont
Little Henry Dwarf Sweetgum	Liquidambar styraciflua 'Little Henry'	#3	27	Cont
May Night Salvia	Salvia nemorosa 'May Night'	#1	10	Cont
Miss Kim Lilac	Syringa patula 'Miss Kim'	#5	3	Cont
Palace Purple Coral Bells	Heuchera micrantha 'Palace Purple'	#1	40	Cont
Pardon Me Day Lily	Hemerocallis 'Pardon Me'	#1	4	Cont
Purple Fire Switch Grass	Panicum virgatum 'Purple Fire'	#3	13	Cont
Summer Wine Ninebark	Physocarpus opulifolius 'Seward'	#5	6	Cont
Walkers Low Camellia	Nippon x fassoni 'Walkers Low'	#1	13	Cont

JOHNSON DAYTON APARTMENTS - STREET TREE LIST

Common Name	Scientific Name	Size	Quantity	Root
Autumn Gold Grape - AGD	Cornus alba 'Autumn Gold'	2.5'	1	BBB
Common Hackberry - HB	Celtis occidentalis	2.5'	1	BBB
Japanese Tree Lilac - JTL	Syringa reticulata 'Joy Silk'	2.5'	1	BBB
JR Gallery Pear - JRP	Pyrus calleryana 'JRP'	2.5'	1	BBB
Korean Sun Pear - KSP	Pyrus ussuriensis	2.5'	1	BBB
New Horizon Elm - NHE	Ulmus 'New Horizon'	2.5'	1	BBB
Red Jewel Coleoglyster - RJC	Malus x Red Jewel	2.5'	1	BBB
Skylark Honeylocust - SKL	Gleditsia inaequalis 'Eterna Skylark'	2.5'	1	BBB
Street Keeper Honeylocust - SKL	Gleditsia inaequalis 'Drum'	2.5'	1	BBB

- GENERAL NOTES:**
- BARK MULCH TO BE BROWN DYED, RECYCLED HARDWOOD WITH FIRE-RESISTANT FIBERGLASS.
 - WASHED STONE TO BE 1.5" CAPITOL WASHED WITH WEED BARRIER FABRIC.
 - BED EDGING TO BE 3" WIDE X 4" DEEP ALUMINUM, MILL FINISH.

- STREET TREE NOTES:**
- EXISTING TERRACE TREES TO BE REMOVED FOR CONSTRUCTION.
 - TREE SPECIES AND FINAL LOCATION TO BE COORDINATED WITH CITY FORESTRY.



PRELIMINARY
NOT FOR CONSTRUCTION

02/26/13	AMENDMENT TO LAND USE APPLICATION	
02/13/13	LAND USE APPLICATION RE-SUBMITTAL	
01/02/13	LAND USE APPLICATION SUBMITTAL	
Date	Issuance/Revisions	Symbol

Johnson Dayton Apartments
Dayton Square

415 W Johnson Street, 226 N Broom Street, 424 W Dayton Street

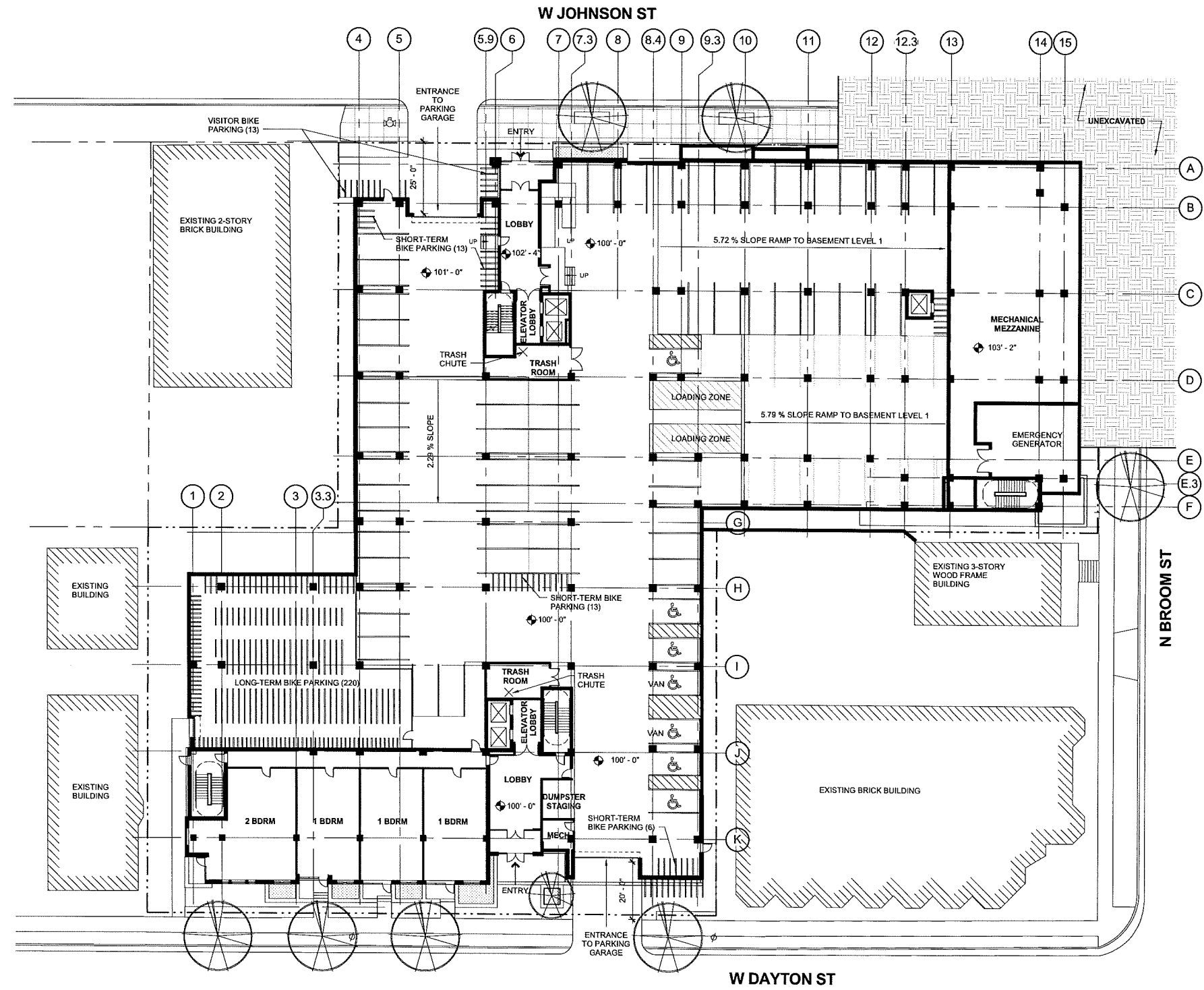
LANDSCAPE PLAN

Project Number: 2012.34.03
Date: 02/26/13

L100

Consultants:

Notes:



PRELIMINARY
NOT FOR CONSTRUCTION

Date	Issuance/Revisions	Symbol
02/26/13	AMENDMENT TO LAND USE APPLICATION	
02/13/13	LAND USE APPLICATION RE-SUBMITTAL	
01/28/13	UPDATED FLOOR PLAN	
01/02/13	LAND USE APPLICATION SUBMITTAL	

JOHNSON DAYTON APARTMENTS
Dayton Square

415 W Johnson Street, 226 N Broom Street, 424 W Dayton Street

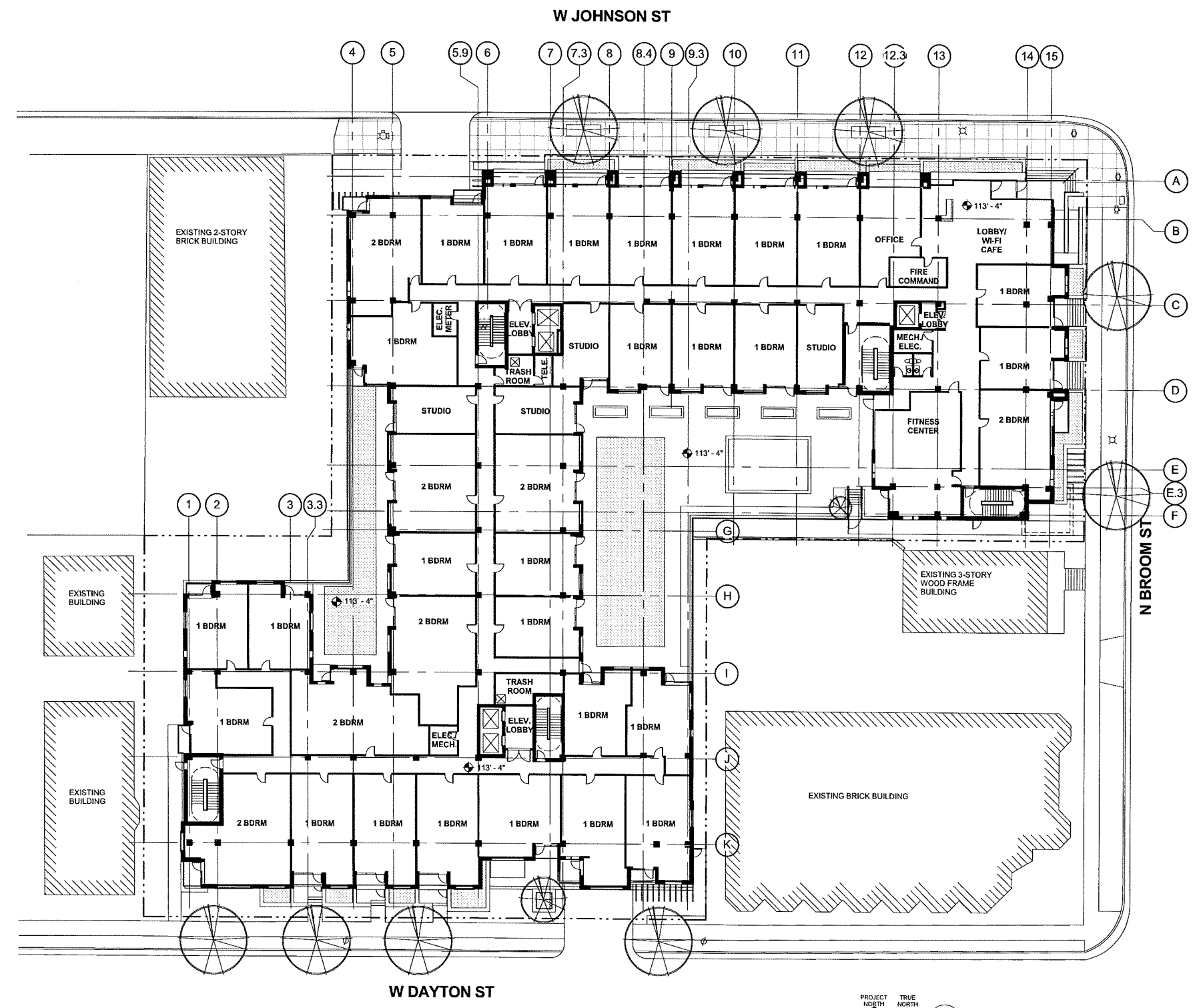
OVERALL FIRST FLOOR PLAN

Project Number: 2012.36.00
Drawing No: A003

PROJECT NORTH TRUE NORTH
1 OVERALL FIRST FLOOR PLAN
1/16" = 1'-0"

Consultants:

Notes:



PRELIMINARY
NOT FOR CONSTRUCTION

Date	Issuance/Revisions	Symbol
02/26/13	AMENDMENT TO LAND USE APPLICATION	
02/13/13	LAND USE APPLICATION RE-SUBMITTAL	
01/02/13	LAND USE APPLICATION SUBMITTAL	

JOHNSON DAYTON APARTMENTS
Dayton Square
415 W Johnson Street, 226 N Broom Street, 424 W Dayton Street

OVERALL SECOND FLOOR PLAN

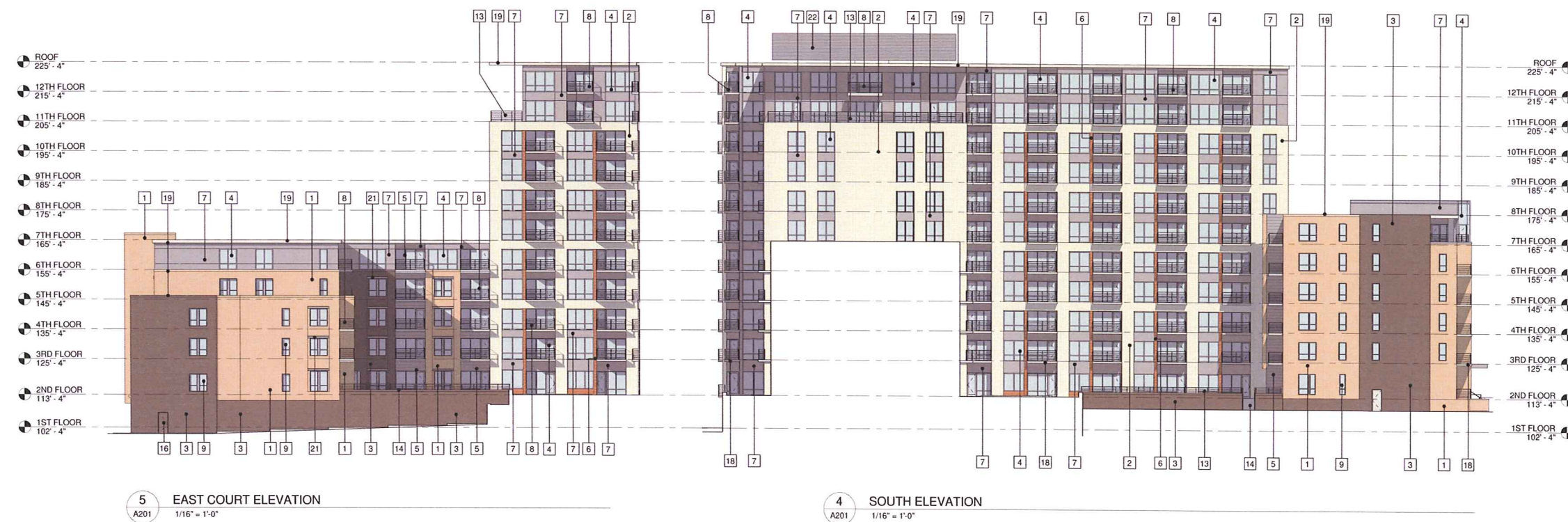
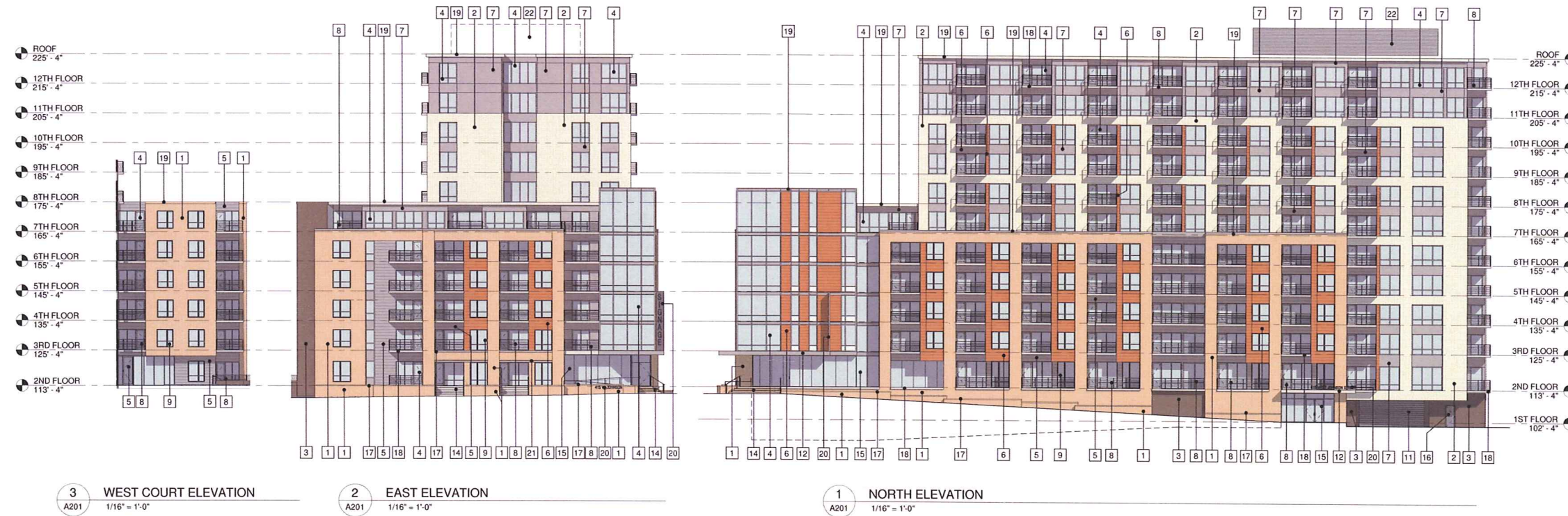
Project Number: 2012.96.00
Drawing No: A004
Date: PLJ

PROJECT TRUE NORTH
1 OVERALL SECOND FLOOR PLAN
1/16" = 1'-0"

Consultants:

Notes:

- 1 BRICK TYPE 1
- 2 BRICK TYPE 2
- 3 BRICK TYPE 3
- 4 WINDOW WALL FRAMING SYSTEM
- 5 METAL WALL PANEL - TYPE 1 COLOR A
- 6 METAL WALL PANEL - TYPE 1 COLOR B
- 7 METAL WALL PANEL - TYPE 2
- 8 METAL GUARD RAIL
- 9 WINDOW UNIT
- 10 BRICK TYPE 4
- 11 O.H. COILING DOOR
- 12 ENTRY CANOPY
- 13 METAL GUARD RAIL
- 14 CONC. STAIR WITH METAL HANDRAILS
- 15 CURTAINWALL FRAMING
- 16 HOLLOW METAL DOOR
- 17 PRECAST WALL COPING OR ACCENT BAND
- 18 CONCRETE DECK
- 19 METAL - WALL COPING FLASHING/ ROOF EDGE
- 20 SIGNAGE AREA
- 21 PAINTED STEEL LINTEL
- 22 METAL WALL PANEL - TYPE 3



PRELIMINARY
NOT FOR CONSTRUCTION

Date	Issuance/Revisions	Symbol
02/26/13	AMENDMENT TO LAND USE APPLICATION	
02/13/13	LAND USE APPLICATION RE-SUBMITTAL	
01/02/13	LAND USE APPLICATION SUBMITTAL	

JOHNSON DAYTON APARTMENTS
Dayton Square

415 W Johnson Street, 226 N
Broom Street, 424 W Dayton
Street

BUILDING ELEVATIONS

Project Number 2012.36.00	Drawing No. A201
Drawn By Author	

Consultants:

Notes:

- 1 BRICK TYPE 1
- 2 BRICK TYPE 2
- 3 BRICK TYPE 3
- 4 WINDOW WALL FRAMING SYSTEM
- 5 METAL WALL PANEL - TYPE 1 COLOR A
- 6 METAL WALL PANEL - TYPE 1 COLOR B
- 7 METAL WALL PANEL - TYPE 2
- 8 METAL GUARD RAIL
- 9 WINDOW UNIT
- 10 BRICK TYPE 4
- 11 O.H. COILING DOOR
- 12 ENTRY CANOPY
- 13 METAL GUARD RAIL
- 14 CONC. STAR WITH METAL HANDRAILS
- 15 CURTAINWALL FRAMING
- 16 HOLLOW METAL DOOR
- 17 PRECAST WALL COPING OR ACCENT BAND
- 18 CONCRETE DECK
- 19 METAL - WALL COPING/FLASHING/ ROOF EDGE
- 20 SIGNAGE AREA
- 21 PAINTED STEEL LINTEL
- 22 METAL WALL PANEL - TYPE 3



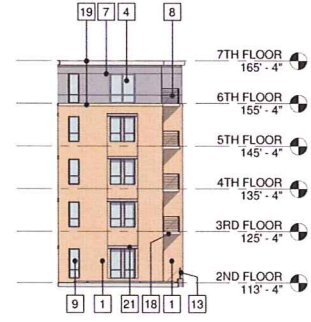
2 WEST ELEVATION
1/16" = 1'-0"



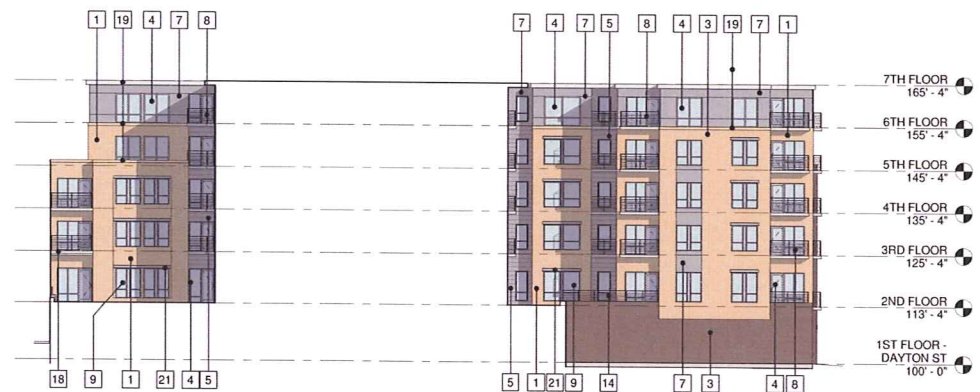
1 SOUTH ELEVATION - DAYTON STREET
1/16" = 1'-0"



5 WEST COURT ELEVATION
1/16" = 1'-0"



4 EAST COURT ELEVATION
1/16" = 1'-0"



3 NORTH ELEVATION
1/16" = 1'-0"

PRELIMINARY
NOT FOR CONSTRUCTION

Date	Issuance Revisions	Symbol
02/26/13	AMENDMENT TO LAND USE APPLICATION	
02/13/13	LAND USE APPLICATION RE-SUBMITTAL	
01/02/13	LAND USE APPLICATION SUBMITTAL	

JOHNSON DAYTON APARTMENTS
Dayton Square

415 W Johnson Street, 226 N Broom Street, 424 W Dayton Street

BUILDING ELEVATIONS

Project Number 2012.36.00	Drawing No. A202
Drawn By PLI	



WEST JOHNSON & NORTH BROOM STREET CORNER



WEST DAYTON STREET - EAST END



WEST DAYTON STREET - WEST END



BUILDING MASSING FROM NORTH



BUILDING MASSING FROM SOUTH

Consultants:

Notes:

PRELIMINARY
NOT FOR CONSTRUCTION

Date	Issuance/Revisions	Symbol
02/26/13	AMENDMENT TO LAND USE APPLICATION	
02/13/13	LAND USE APPLICATION RE-SUBMITTAL	
01/02/13	LAND USE APPLICATION SUBMITTAL	

JOHNSON DAYTON APARTMENTS
Dayton Square

415 W Johnson Street, 226 N
Broom Street, 424 W Dayton
Street

Drawing Title

3D IMAGES

Project Number

2012.56.00

Drawing No.

A203

Drawn By

Author

JOHNSON DAYTON APARTMENTS

415 W Johnson Street, 226 N Broom Street, 424 W Dayton Street
2012.36.00

Potter Lawson
Success by Design

Consultants:

Notes:

DRAWING INDEX

GENERAL	
CD01	COVER DRAWING
CIVIL	
-	SITE SURVEY
C100	GRADING PLAN
C101	UTILITY PLAN
C102	ARCHITECTURAL SITE PLAN
LANDSCAPE	
L100	LANDSCAPE PLAN
DEMOLITION	
D100	SITE DEMOLITION PLAN
D101	PHOTOGRAPHS OF EXISTING CONTEXT
D102	PHOTOGRAPHS OF EXISTING BUILDINGS TO BE DEMOLISHED
ARCHITECTURAL	
A002	OVERALL BELOW GRADE PARKING
A003	OVERALL FIRST FLOOR PLAN
A004	OVERALL SECOND FLOOR PLAN
A005	OVERALL THIRD FLOOR PLAN
A006	OVERALL FIFTH FLOOR PLAN
A007	OVERALL SIXTH FLOOR PLAN
A008	OVERALL SEVENTH FLOOR PLAN
A009	OVERALL EIGHTH FLOOR PLAN
A010	OVERALL ELEVENTH FLOOR PLAN
A011	OVERALL TWELFTH FLOOR PLAN
A201	BUILDING ELEVATIONS
A202	BUILDING ELEVATIONS
A203	3D IMAGES
ELECTRICAL	
E002	EXTERIOR LIGHTING PLAN



Date	Issuance/Revisions	Symbol
02/13/13	LAND USE APPLICATION RE-SUBMITTAL	
01/02/13	LAND USE APPLICATION SUBMITTAL	

JOHNSON DAYTON APARTMENTS
Dayton Square

415 W Johnson Street, 226 N
Broom Street, 424 W Dayton
Street

COVER DRAWING

Project Number: 2012.36.00	Drawing No. CD01
Drawn By: PLI	

Potter Lawson
Success by Design

15 Ellis Potter Court
Madison, Wisconsin
53711
(608) 274-2741
fax: 274-3674

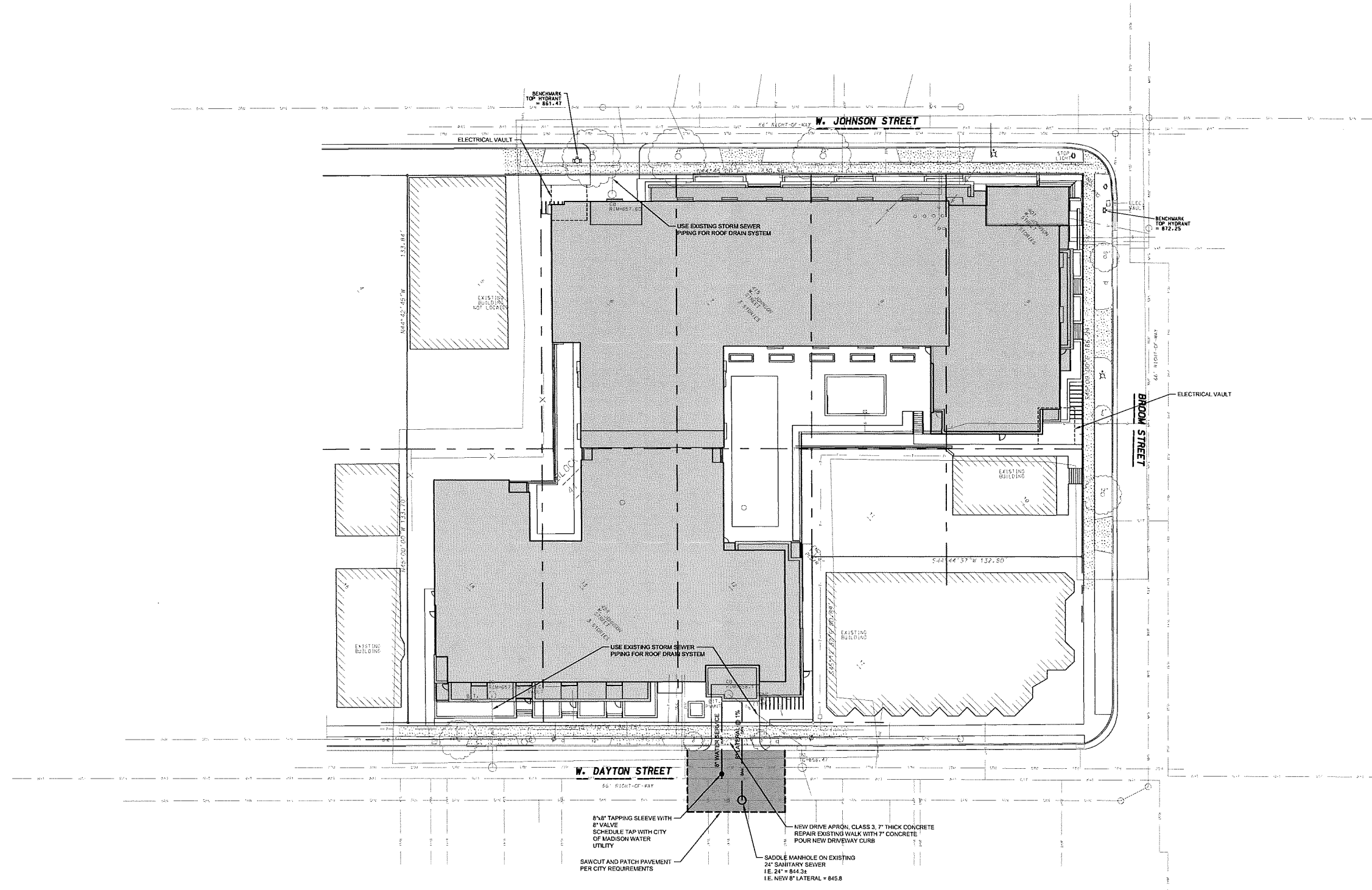
© 2013 Potter Lawson Architects

2/13/2013 9:36:12 AM

Consultants:

D'ONOFRIO KOTKE AND ASSOCIATES, INC.
 7530 Westward Way, Madison, WI 53717
 Phone: 608.833.7530 • Fax: 608.833.1059
YOUR NATURAL RESOURCE FOR LAND DEVELOPMENT

Notes:



PRELIMINARY
 NOT FOR CONSTRUCTION

02/13/2013	LAND USE APPLICATION RE-SUBMITTAL
01/02/2013	LAND USE APPLICATION SUBMITTAL
Date	Issuance/Revisions
	Symbol

Johnson Dayton Apartments
 Dayton Square

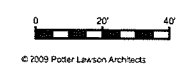
415 W Johnson Street, 226 N
 Broom Street, 424 W Dayton
 Street

Utility Plan

PL Project Number:
 2012.36.00

Drawn By:
 JMS

C101

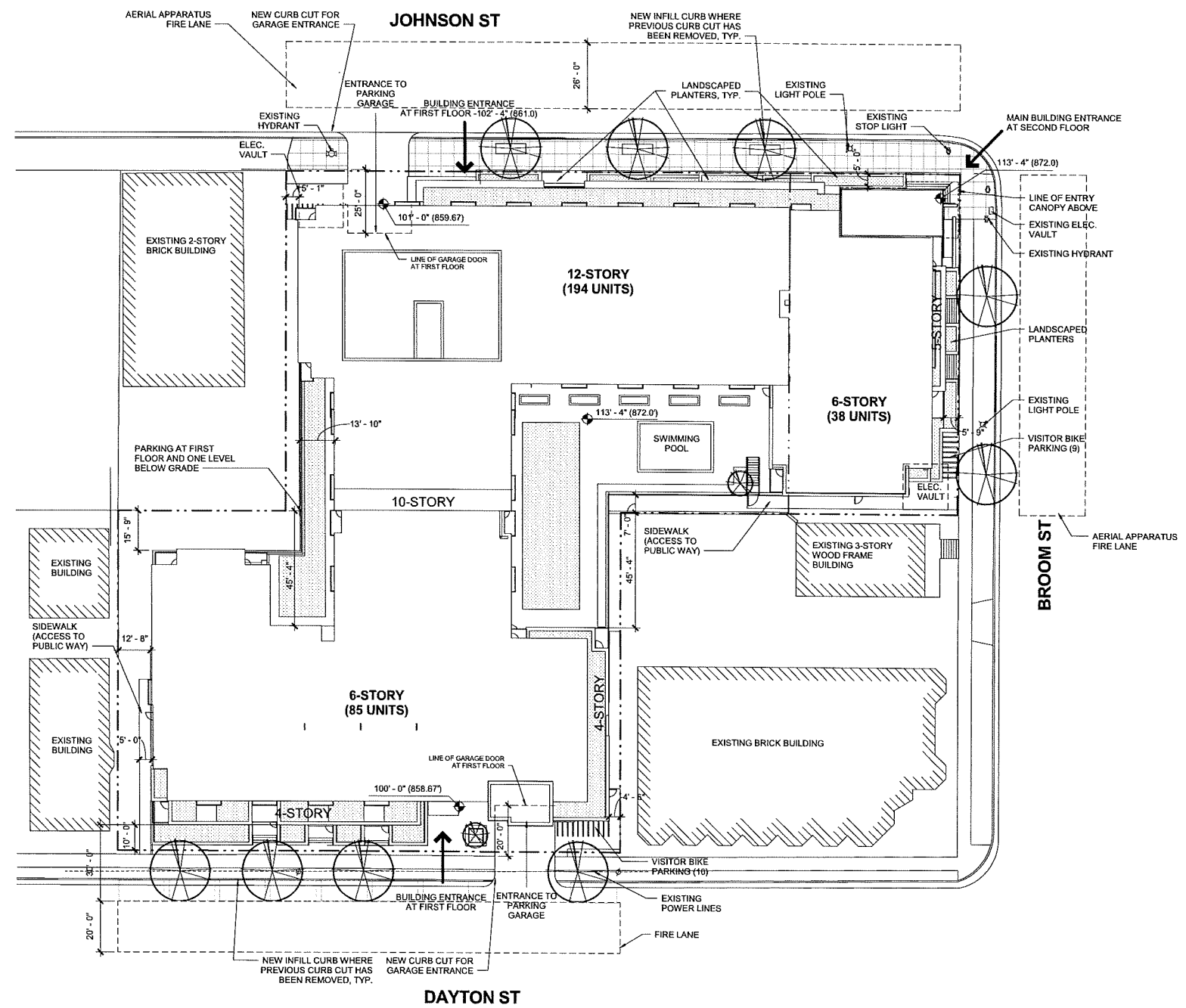


© 2009 Potter Lawson Architects

12/14/2012 4:28:43 PM

Consultants:

Notes:



PRELIMINARY
NOT FOR CONSTRUCTION

Date	Issuance/Revisions	Symbol
02/13/13	LAND USE APPLICATION RE-SUBMITTAL	
01/02/13	LAND USE APPLICATION SUBMITTAL	

JOHNSON DAYTON APARTMENTS
Dayton Square

415 W Johnson Street, 226 N
Broom Street, 424 W Dayton
Street

ARCHITECTURAL SITE PLAN

Project Number: 2012.36.00	Drawing No. C102
Client: PLJ	

PROJECT NORTH TRUE NORTH
1 ARCHITECTURAL SITEPLAN
1" = 20'-0"

Consultants:



Notes:

JOHNSON DAYTON APARTMENTS - PLANT LIST

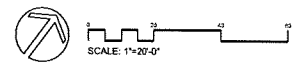
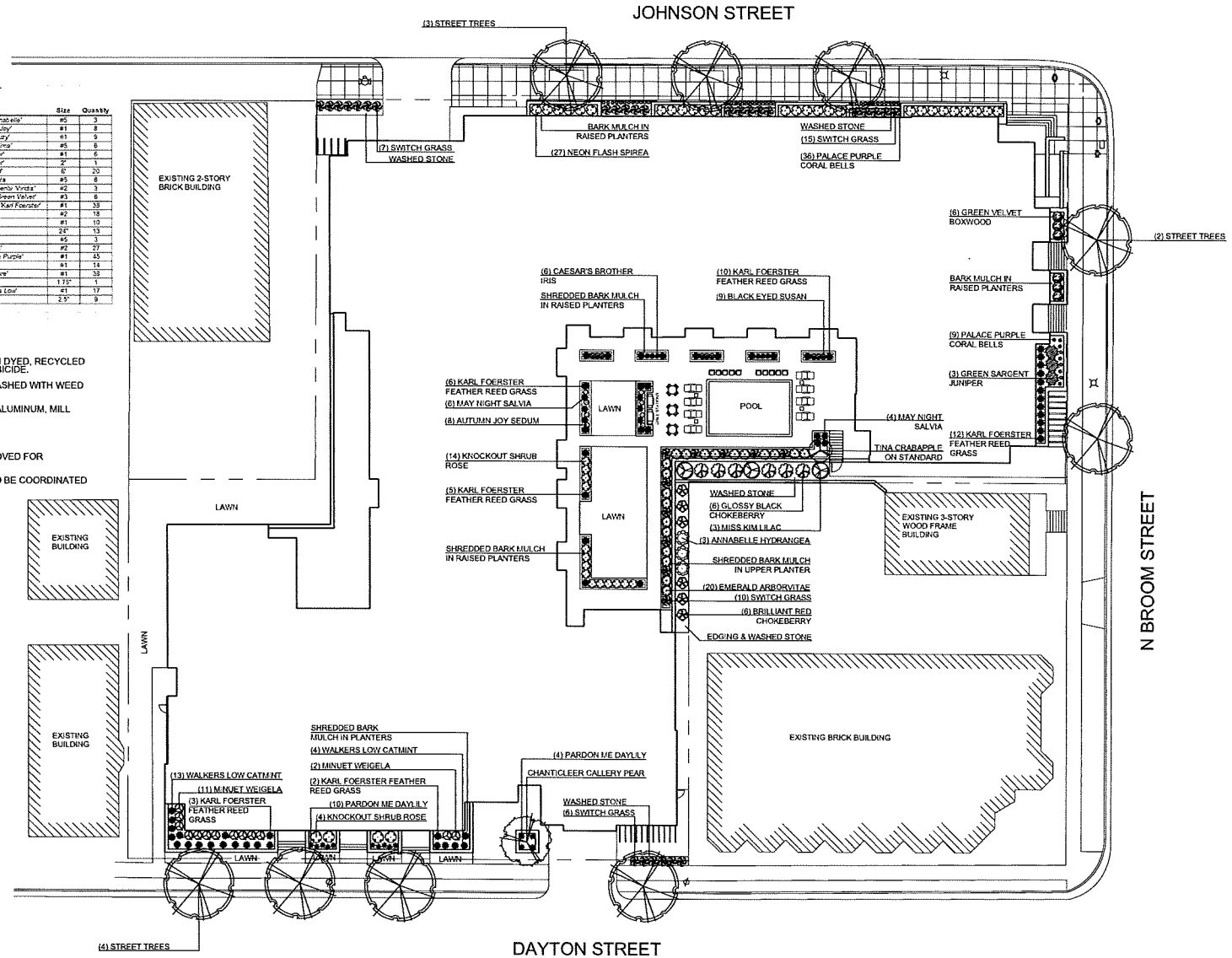
Common Name	Scientific Name	Size	Quantity
Domestic Hydrangea	<i>Hydrangea arborescens 'Annabelle'</i>	#5	3
Autumn Joy Sedum	<i>Sedum spectabile 'Autumn Joy'</i>	#1	8
Black Eyed Susan	<i>Rudbeckia hirta 'Goldsturm'</i>	#1	8
Black-eyed Susans	<i>Rudbeckia hirta 'Goldsturm'</i>	#5	8
Caesar's Brother Iris	<i>Iris sibirica 'Caesar's Brother'</i>	#1	6
Chanticleer Gallery Pear	<i>Pyrus calleryana 'Chanticleer'</i>	#	1
Emerald Anemone	<i>Anemone 'Emerald'</i>	#	20
Green Velvet Boxwood	<i>Buxus microcarpa 'Green Velvet'</i>	#5	8
Green Velvet Boxwood	<i>Buxus microcarpa 'Green Velvet'</i>	#2	3
Green Velvet Boxwood	<i>Buxus microcarpa 'Green Velvet'</i>	#3	8
Knockout Shrub Rose	<i>Rosa 'Knockout'</i>	#2	18
May Night Salvia	<i>Salvia nemorosa 'May Night'</i>	#1	10
May Night Salvia	<i>Salvia nemorosa 'May Night'</i>	#2	13
May Night Salvia	<i>Salvia nemorosa 'May Night'</i>	#5	3
May Night Salvia	<i>Salvia nemorosa 'May Night'</i>	#2	27
Palace Purple Juniper	<i>Juniperus horizontalis 'Palace Purple'</i>	#1	15
Parson Me Day Lily	<i>Lilium 'Parson Me Day'</i>	#1	14
Parson Me Day Lily	<i>Lilium 'Parson Me Day'</i>	#1	38
Parson Me Day Lily	<i>Lilium 'Parson Me Day'</i>	1 1/2"	1
Parson Me Day Lily	<i>Lilium 'Parson Me Day'</i>	#1	17
Street Trees to be determined	<i>None / Various Urban Low</i>	2 1/2"	9

GENERAL NOTES:

- SHREDDED BARK MULCH TO BE BROWN DYED, RECYCLED HARDWOOD, WITH PRE-EMERGENT HERBICIDE.
- WASHED STONE TO BE 1.5" CAPITOL WASHED WITH WEED BARRIER FABRIC.
- BED EDGING TO BE 1/2" WIDE X 4" DEEP ALUMINUM, MILL FINISH.

STREET TREE NOTES:

- EXISTING TERRACE TREES TO BE REMOVED FOR CONSTRUCTION.
- TREE SPECIES AND FINAL LOCATION TO BE COORDINATED WITH CITY FORESTRY.



PRELIMINARY
NOT FOR CONSTRUCTION

Date	Issuance/Revisions	Symbol
02/13/13	LAND USE APPLICATION RE-SUBMITTAL	
01/02/13	LAND USE APPLICATION SUBMITTAL	

Johnson Dayton Apartments
Dayton Square

415 W Johnson Street, 226 N Broom Street, 424 W Dayton Street

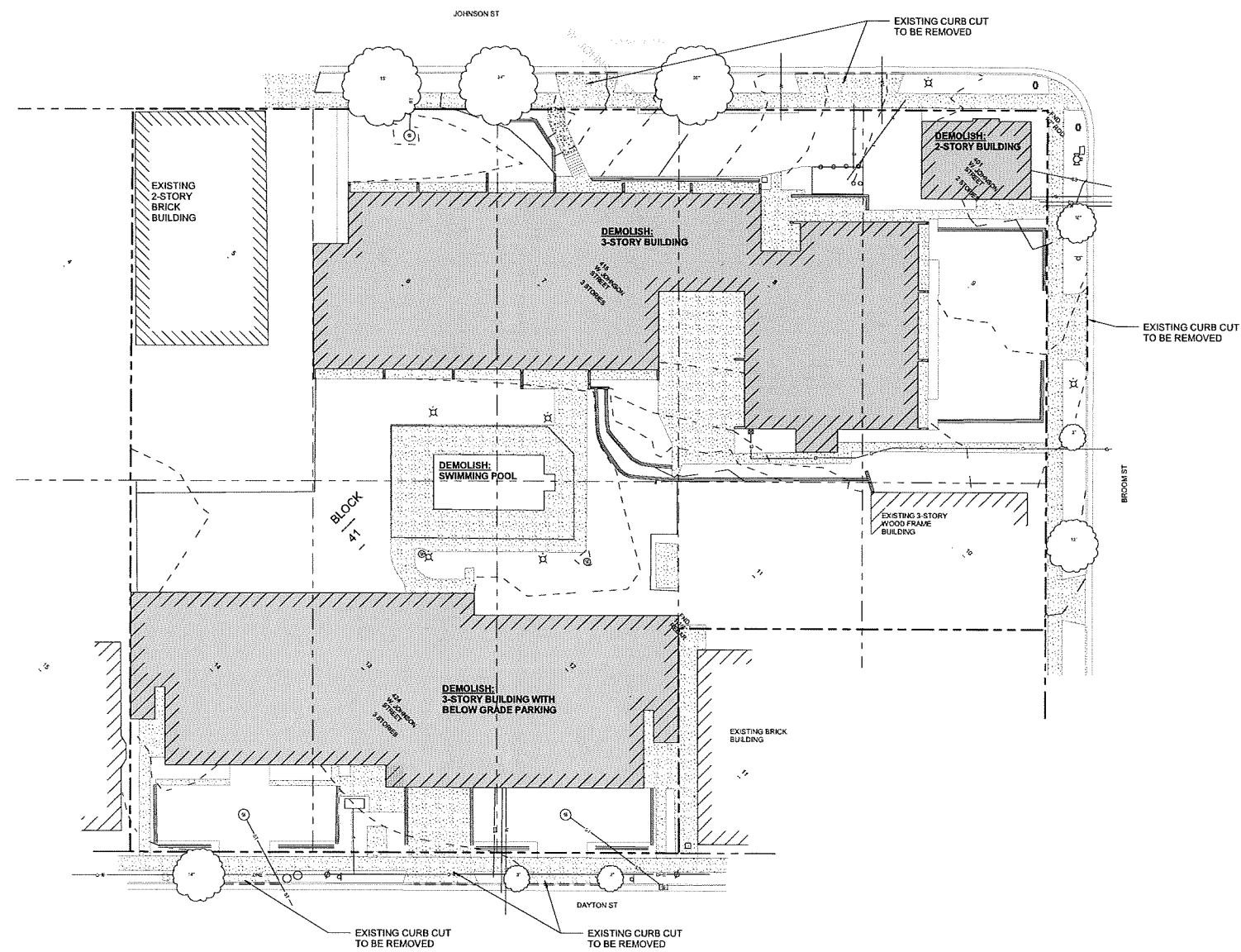
LANDSCAPE PLAN

PL Project Number: 2012.35.00
Drawing No.:
Drawn By: BNF

L100

Consultants:

Notes:



PRELIMINARY
NOT FOR CONSTRUCTION

Date	Issuance/Revisions	Symbol
02/13/13	LAND USE APPLICATION RE-SUBMITTAL	
01/02/13	LAND USE APPLICATION SUBMITTAL	

JOHNSON DAYTON APARTMENTS
Dayton Square

415 W Johnson Street, 226 N
Broom Street, 424 W Dayton Street

Drawing Title

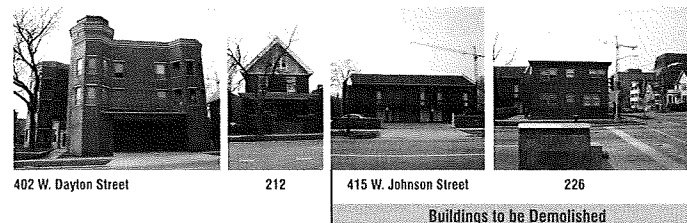
SITE DEMOLITION PLAN

PL/Project Number:
2012.36.00
Drawn by:
Author

Drawing No.
D100

PROJECT NORTH TRUE NORTH
1 D100 SITE DEMOLITION PLAN
1" = 20'-0"

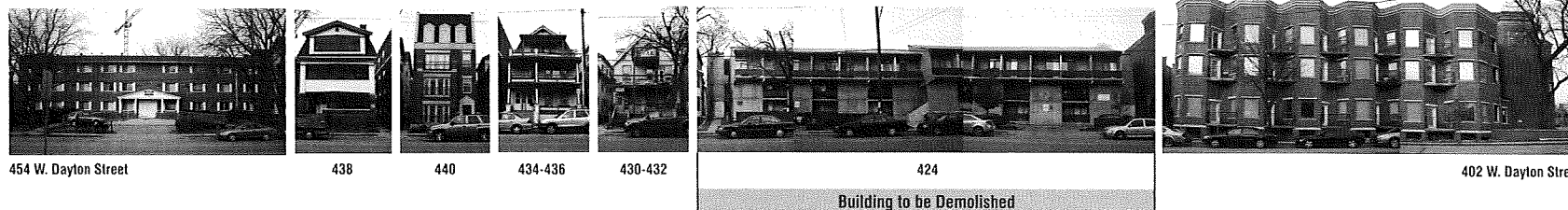
N. Broom Street



6 EXISTING STREETScape AT N. BROOM STREET
D101



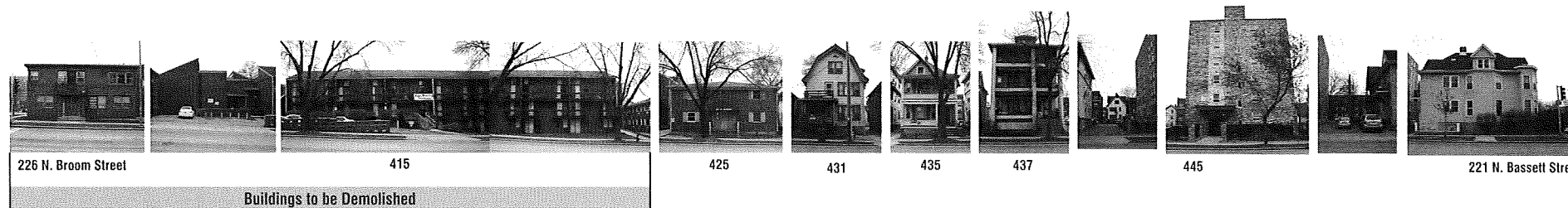
5 EXISTING STREETScape AT OPPOSITE SIDE OF BROOM STREET
D101



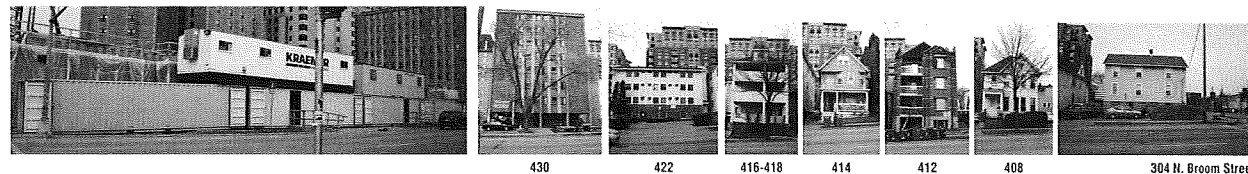
4 EXISTING STREETScape AT W. DAYTON STREET
D101



3 EXISTING STREETScape AT OPPOSITE SIDE OF W. DAYTON ST
D101



2 EXISTING STREETScape AT W. JOHNSON STREET
D101



1 EXISTING STREETScape AT OPPOSITE SIDE OF W. JOHNSON STREET
D101

Consultants:

Notes:

PRELIMINARY
NOT FOR CONSTRUCTION

02/13/13	LAND USE APPLICATION RE-SUBMITTAL	
01/02/13	LAND USE APPLICATION SUBMITTAL	
Date	Issuance/Revisions	Symbol

**JOHNSON DAYTON
APARTMENTS**
Dayton Square

415 W. Johnson Street, 226 N.
Broom Street, 424 W. Dayton
Street

PHOTOGRAPHS OF
EXISTING CONTEXT

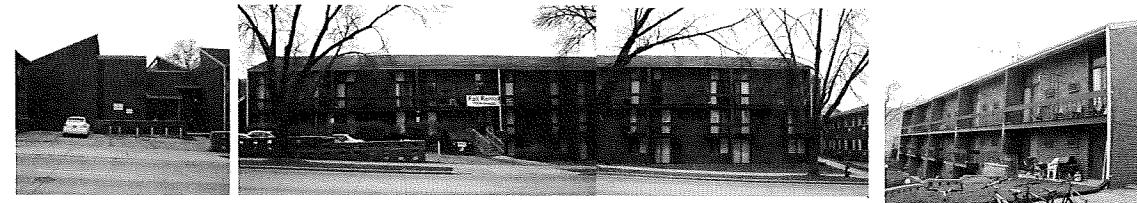
Project Number:
2012.36.00

Drawn by:
PEJ

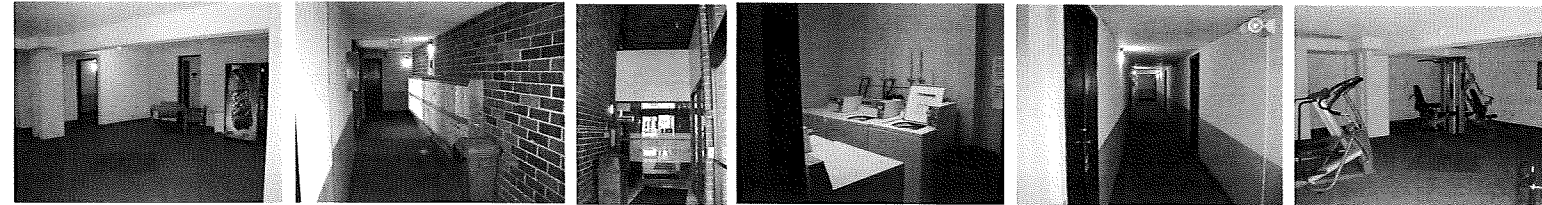
Sheet No.
D101

Consultants:

Notes:



EXTERIOR



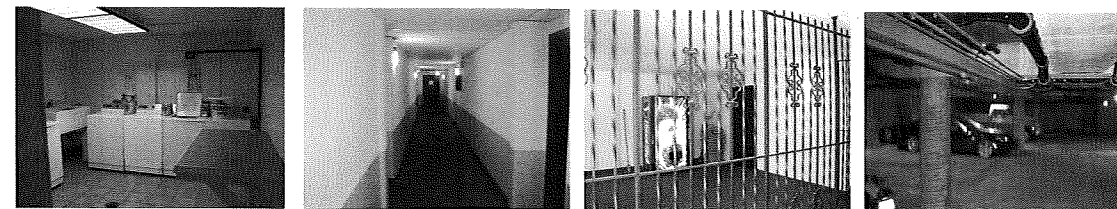
INTERIOR

3
D102

415 W. JOHNSON ST



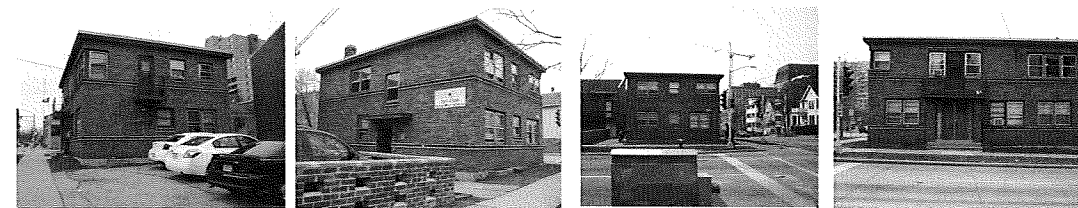
EXTERIOR



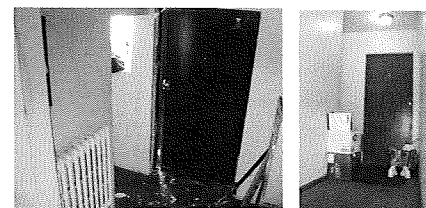
INTERIOR

2
D102

424 W. DAYTON ST



EXTERIOR



INTERIOR

1
D102

226 N. BROOM ST

PRELIMINARY
NOT FOR CONSTRUCTION

Date	Issuance/Revisions	Symbol
02/12/13	LAND USE APPLICATION RE-SUBMITTAL	
01/02/13	LAND USE APPLICATION SUBMITTAL	

**JOHNSON DAYTON
APARTMENTS**
Dayton Square

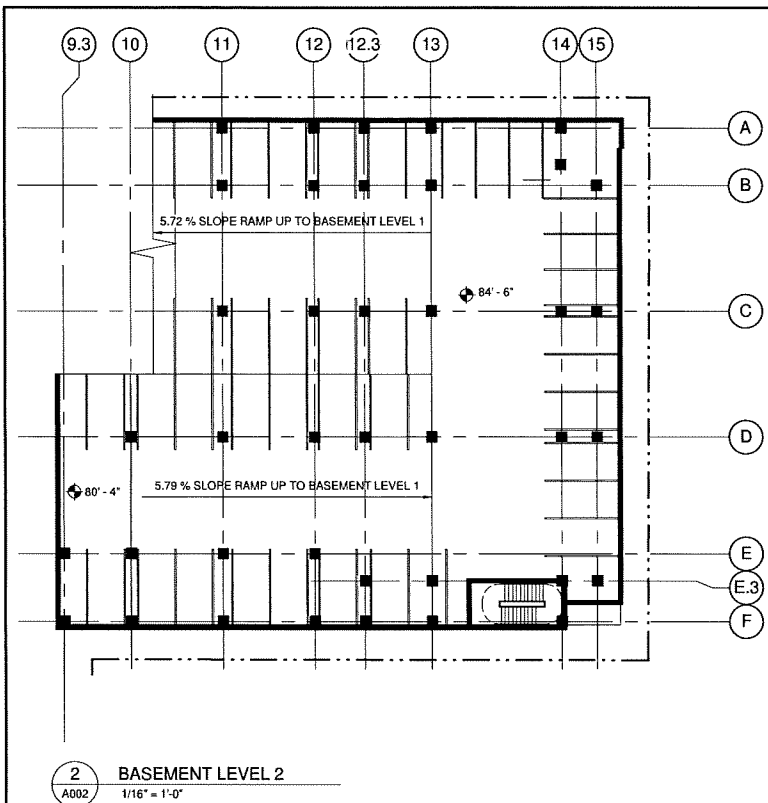
415 W Johnson Street, 226 N
Broom Street, 424 W Dayton
Street

PHOTOGRAPHS OF
EXISTING BUILDINGS TO BE
DEMOLISHED

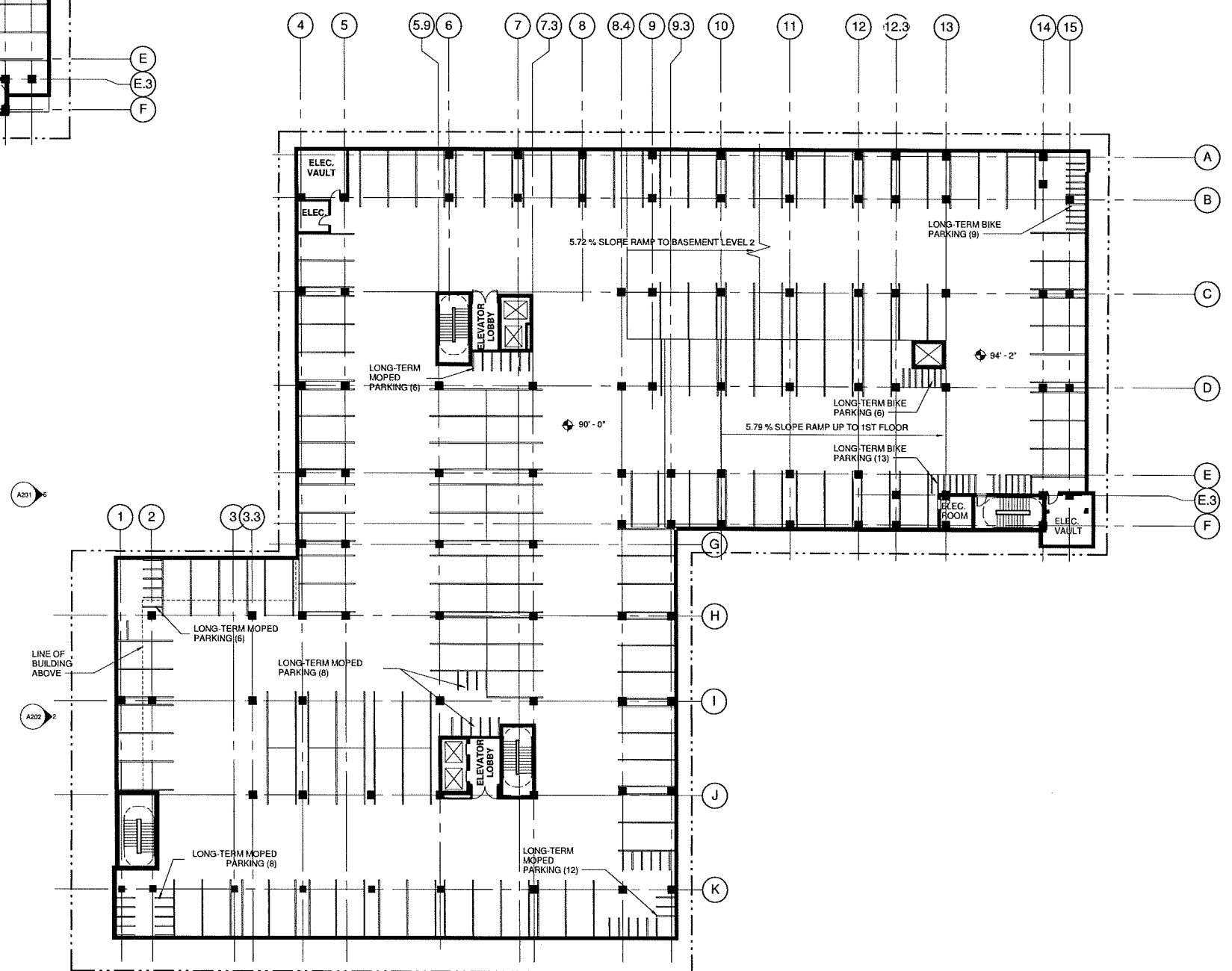
Project Number 2012.36.00	Drawing No. D102
Drawn By PLJ	

Consultants:

Notes:



2 BASEMENT LEVEL 2
A002 1/16" = 1'-0"



A201

A202

LINE OF BUILDING ABOVE



PROJECT NORTH TRUE NORTH
1 BASEMENT LEVEL 1 PARKING OVERALL
1/16" = 1'-0"

© 2013 Potter Lawson Architects

PRELIMINARY
NOT FOR CONSTRUCTION

Date	Issuance/Revisions	Symbol
02/13/13	LAND USE APPLICATION RE-SUBMITTAL	
01/06/13	REVISED	
01/02/13	LAND USE APPLICATION SUBMITTAL	

JOHNSON DAYTON APARTMENTS
Dayton Square

415 W Johnson Street, 226 N
Broom Street, 424 W Dayton
Street

Overall Below Grade
Parking

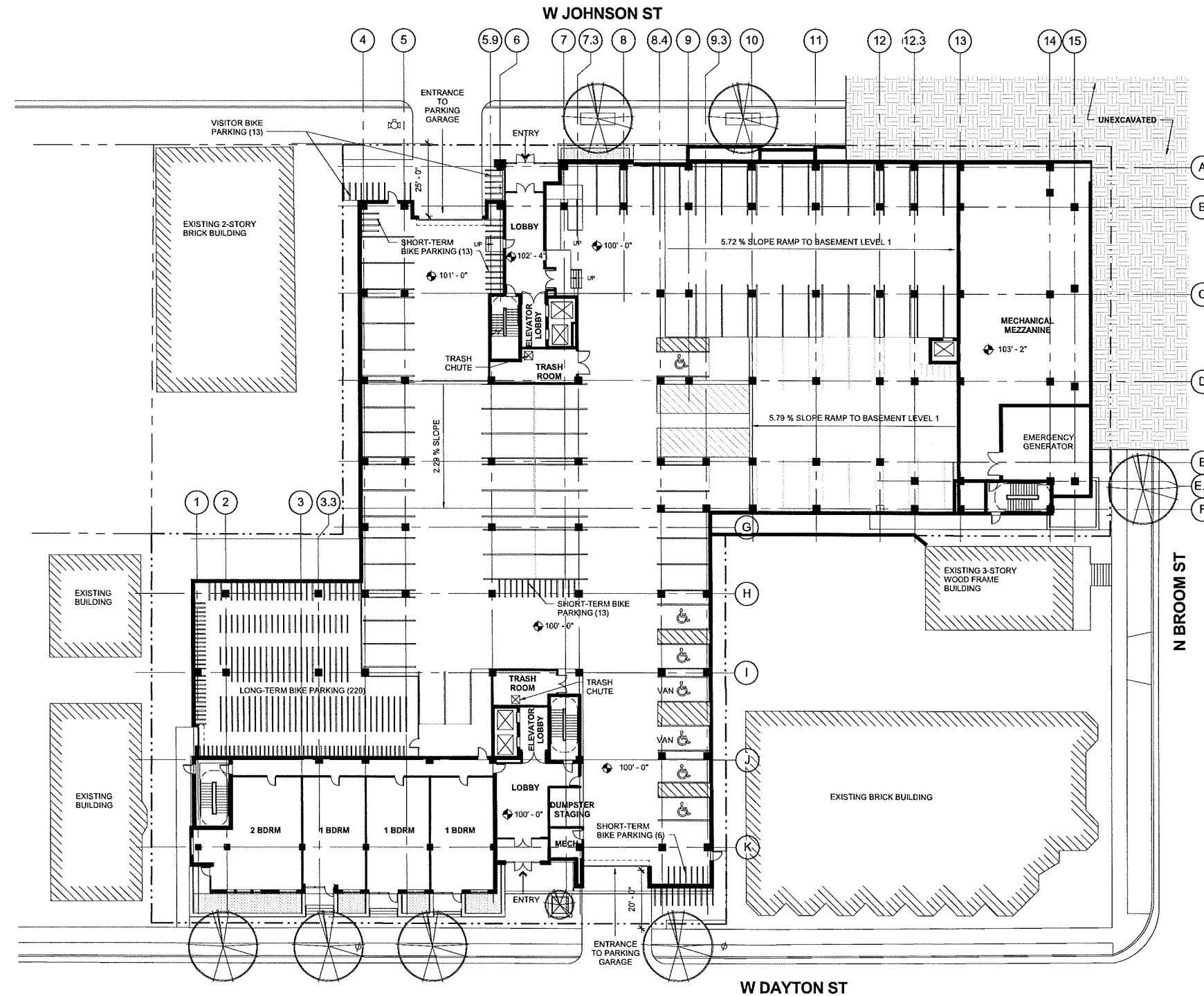
PLJ

A002

2/13/2013 10:01:56 AM

Consultants:

Notes:



PRELIMINARY
NOT FOR CONSTRUCTION

02/13/13	LAND USE APPLICATION RE-SUBMITTAL	
01/28/13	UPDATED FLOOR PLAN	
01/02/13	LAND USE APPLICATION SUBMITTAL	
Date	Issuance/Revision	Symbol

JOHNSON DAYTON APARTMENTS
Dayton Square

415 W Johnson Street, 226 N Broom Street, 424 W Dayton Street

Drawing Title

OVERALL FIRST FLOOR PLAN

PLI Project Number: 2012.36.00
Drawn by: PLI

A003

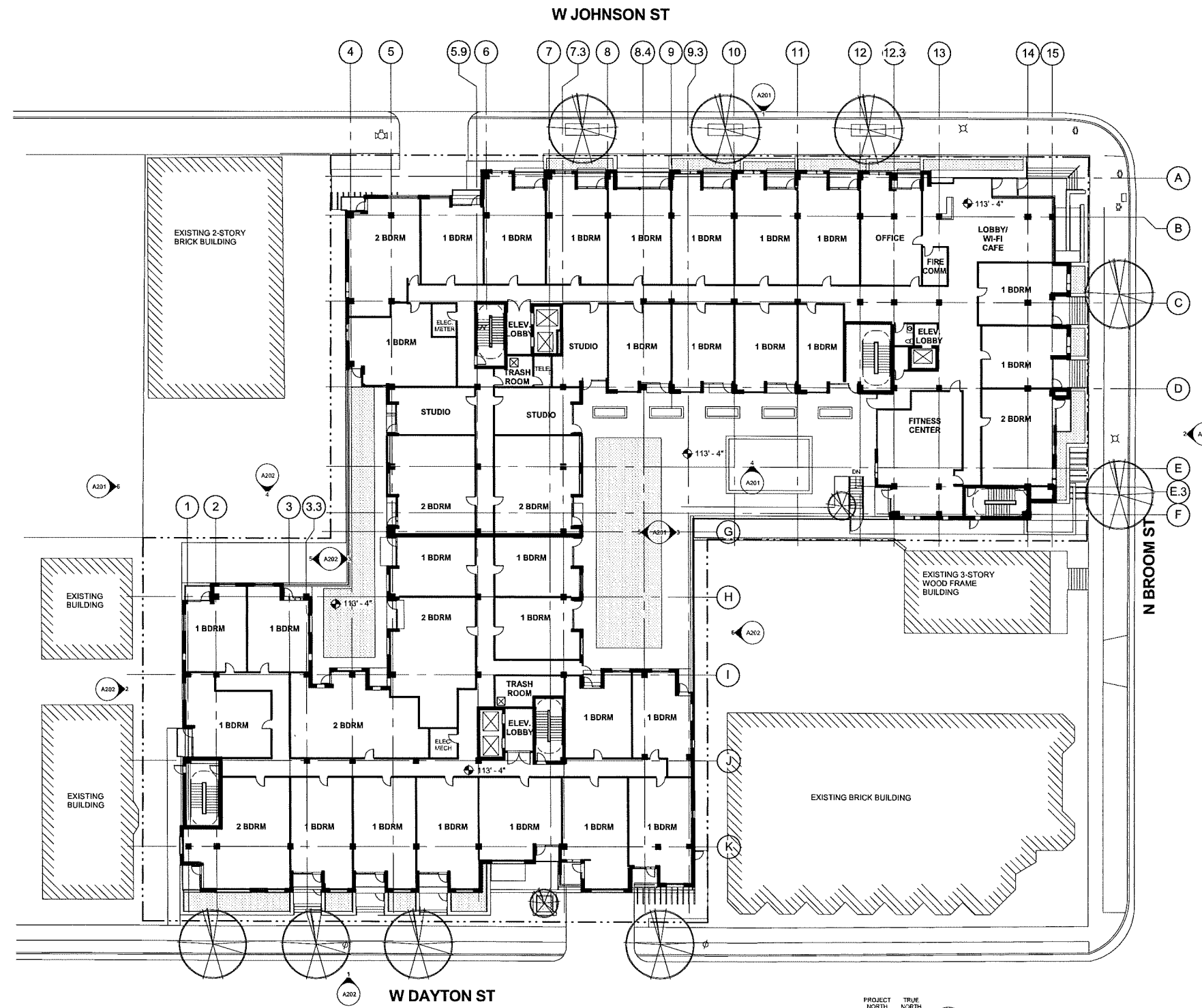
PROJECT NORTH TRUE NORTH
1 A003 OVERALL FIRST FLOOR PLAN
1/16" = 1'-0"

© 2013 Potter Lawson Architects

2/12/2013 7:52:08 PM

Consultants:

Notes:



PRELIMINARY
NOT FOR CONSTRUCTION

02/13/13	LAND USE APPLICATION RE-SUBMITTAL	
01/02/13	LAND USE APPLICATION SUBMITTAL	
Date	Issuance/Revisions	Symbol

JOHNSON DAYTON APARTMENTS
Dayton Square

415 W Johnson Street, 226 N
Broom Street, 424 W Dayton
Street

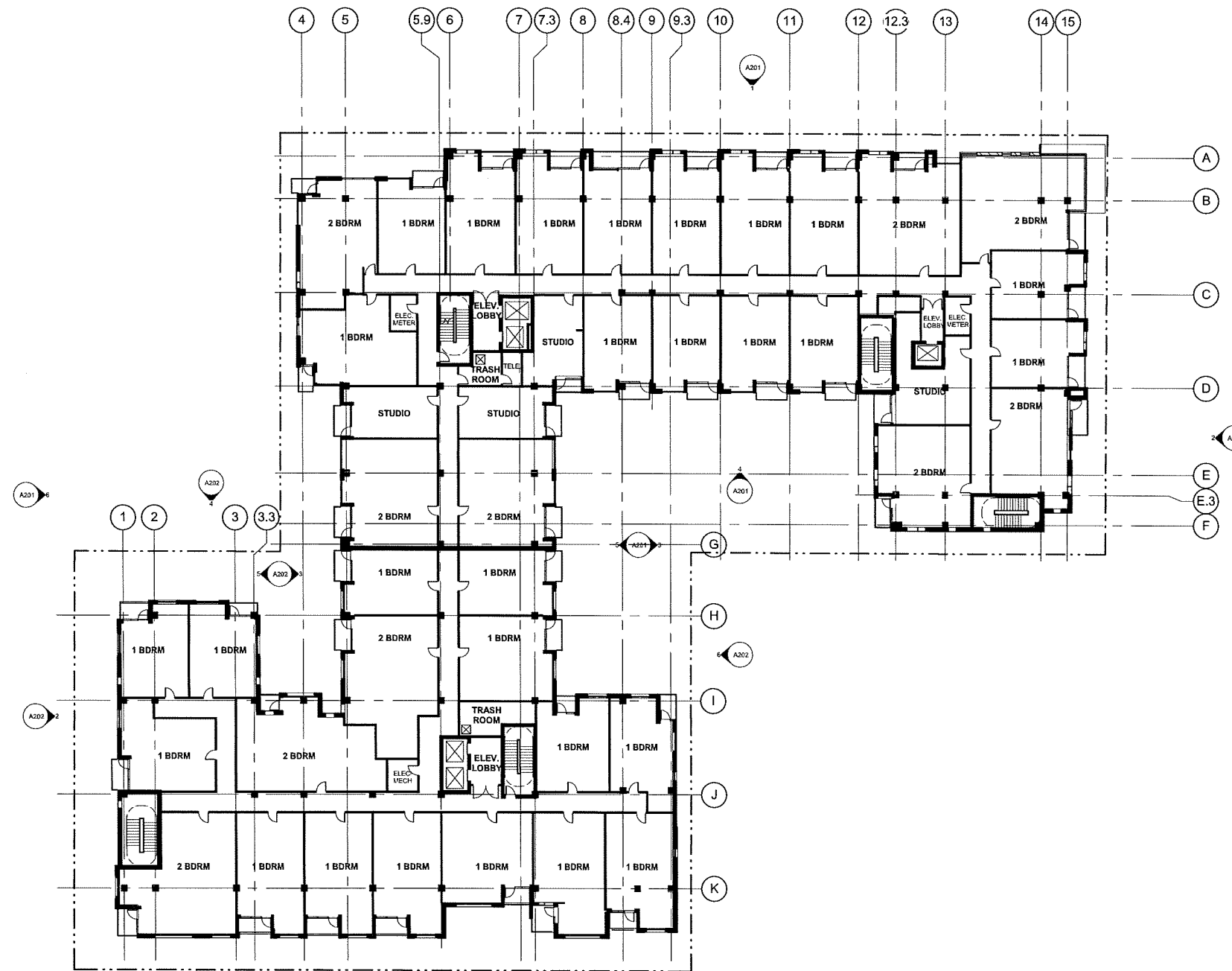
OVERALL SECOND FLOOR PLAN

Project Number: 2012.36.00	Drawing No: A004
Drawn by: PLJ	

PROJECT NORTH TRUE NORTH
1 OVERALL SECOND FLOOR PLAN
1/16" = 1'-0"

Consultants:

Notes:



PRELIMINARY
NOT FOR CONSTRUCTION

Date	Issuance/Revisions	Symbol
02/13/13	LAND USE APPLICATION RE-SUBMITTAL	
01/02/13	LAND USE APPLICATION SUBMITTAL	

JOHNSON DAYTON APARTMENTS
Dayton Square

415 W Johnson Street, 226 N
Broom Street, 424 W Dayton
Street

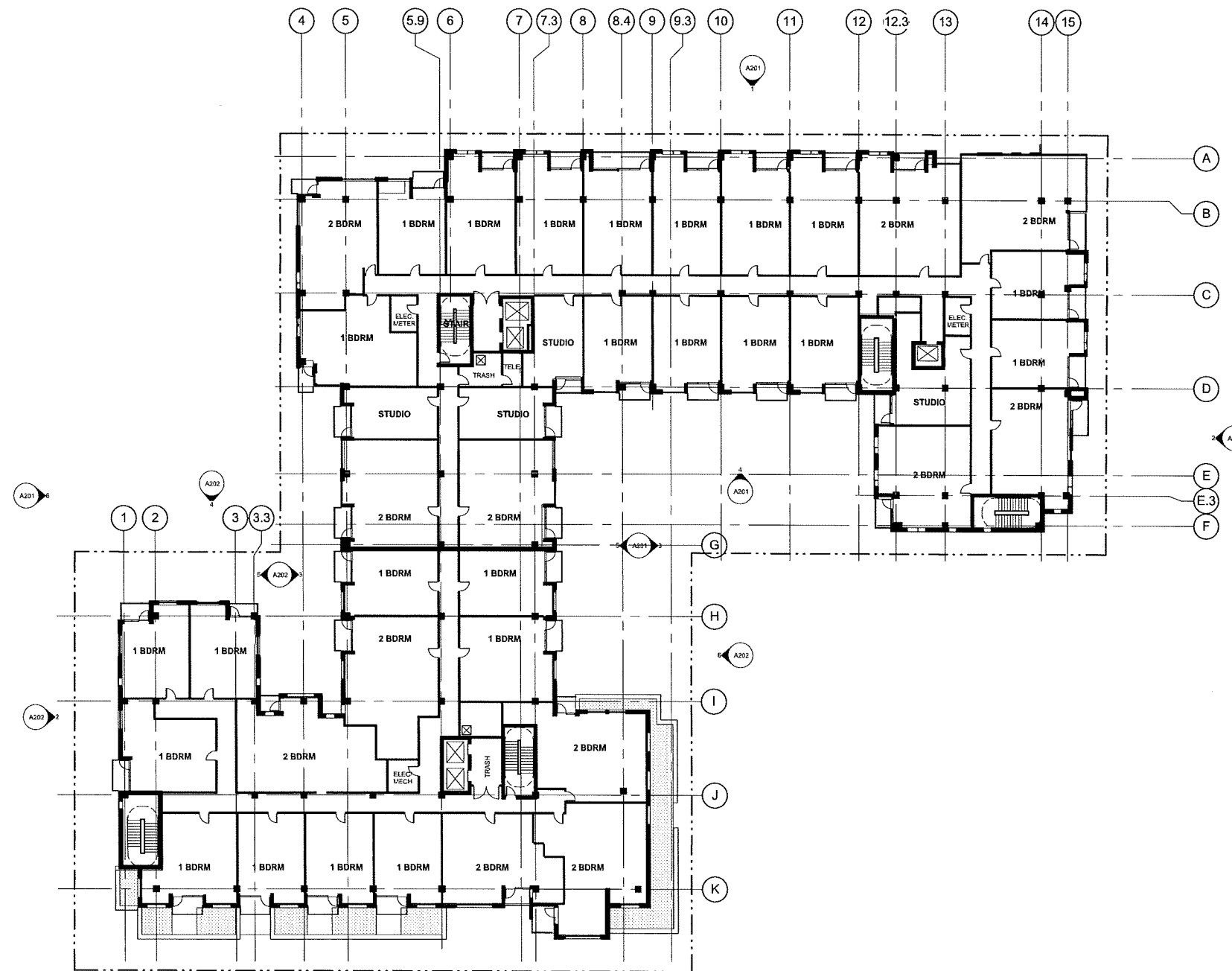
OVERALL THIRD FLOOR PLAN

Project Number: 2012.36.50
Drawing No: **A005**

PROJECT NORTH TRUE NORTH
1 A005 OVERALL THIRD FLOOR PLAN (FOURTH FLOOR SIMILAR)
1/16" = 1'-0"

Consultants:

Notes:



PRELIMINARY
NOT FOR CONSTRUCTION

Date	Issuance/Revisions	Symbol
02/15/13	LAND USE APPLICATION RE-SUBMITTAL	
01/02/13	LAND USE APPLICATION SUBMITTAL	

JOHNSON DAYTON APARTMENTS
Dayton Square

415 W Johnson Street, 226 N
Broom Street, 424 W Dayton Street

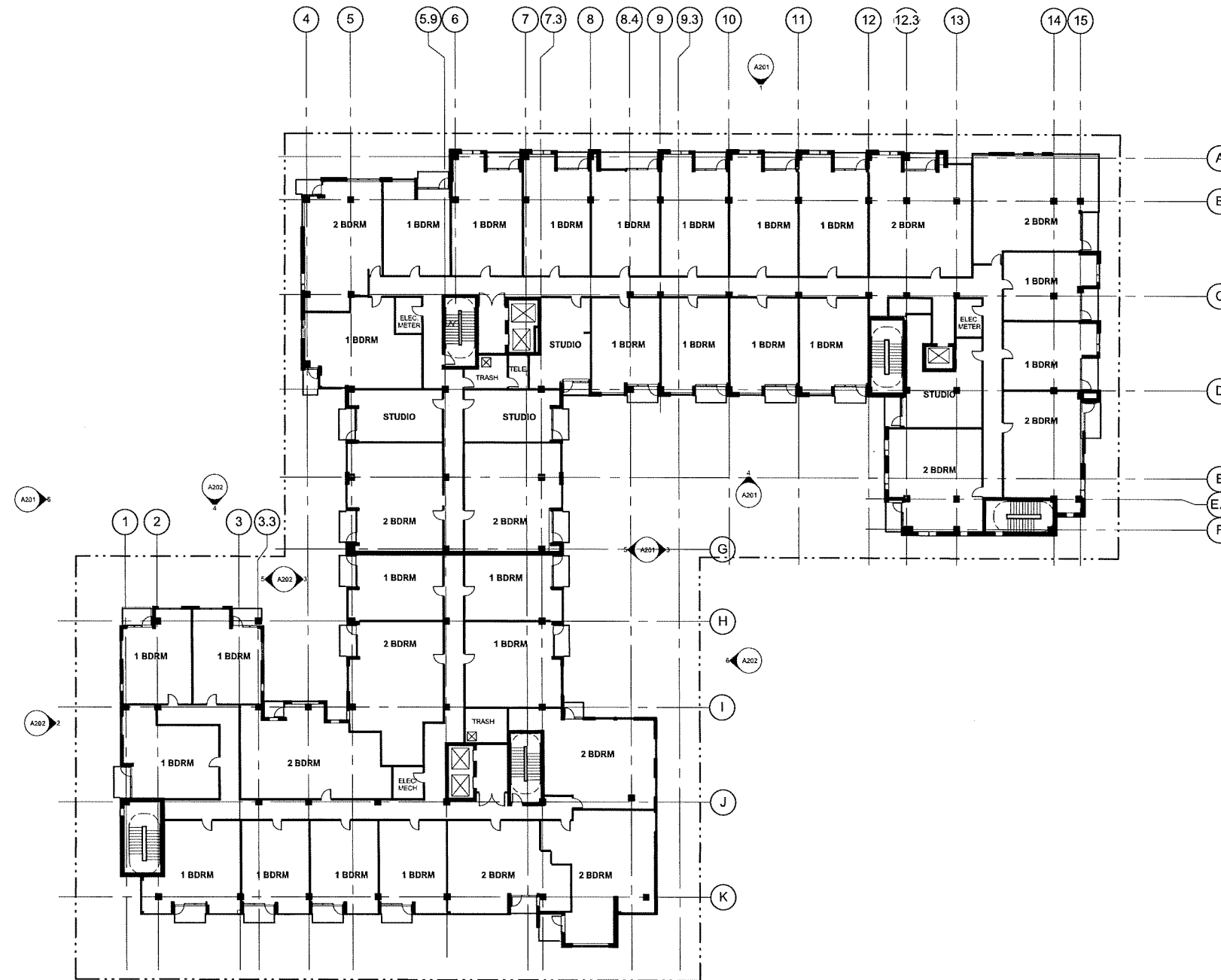
OVERALL FIFTH FLOOR PLAN

Project Number: 2012.36.00	Drawing No: A006
Drawn By: PLI	

PROJECT NORTH TRUE NORTH
1 OVERALL FIFTH FLOOR PLAN
 1/16" = 1'-0"

Consultants:

Notes:



PRELIMINARY
NOT FOR CONSTRUCTION

Date	Issuance/Revisions	Symbol
02/13/13	LAND USE APPLICATION RE-SUBMITTAL	
01/02/13	LAND USE APPLICATION SUBMITTAL	

JOHNSON DAYTON APARTMENTS
Dayton Square

415 W Johnson Street, 226 N
Broom Street, 424 W Dayton
Street

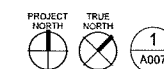
Drawing Title

OVERALL SIXTH FLOOR PLAN

PLI Project Number:
2912.36.00
Drawn by:
PLI

Drawing No.

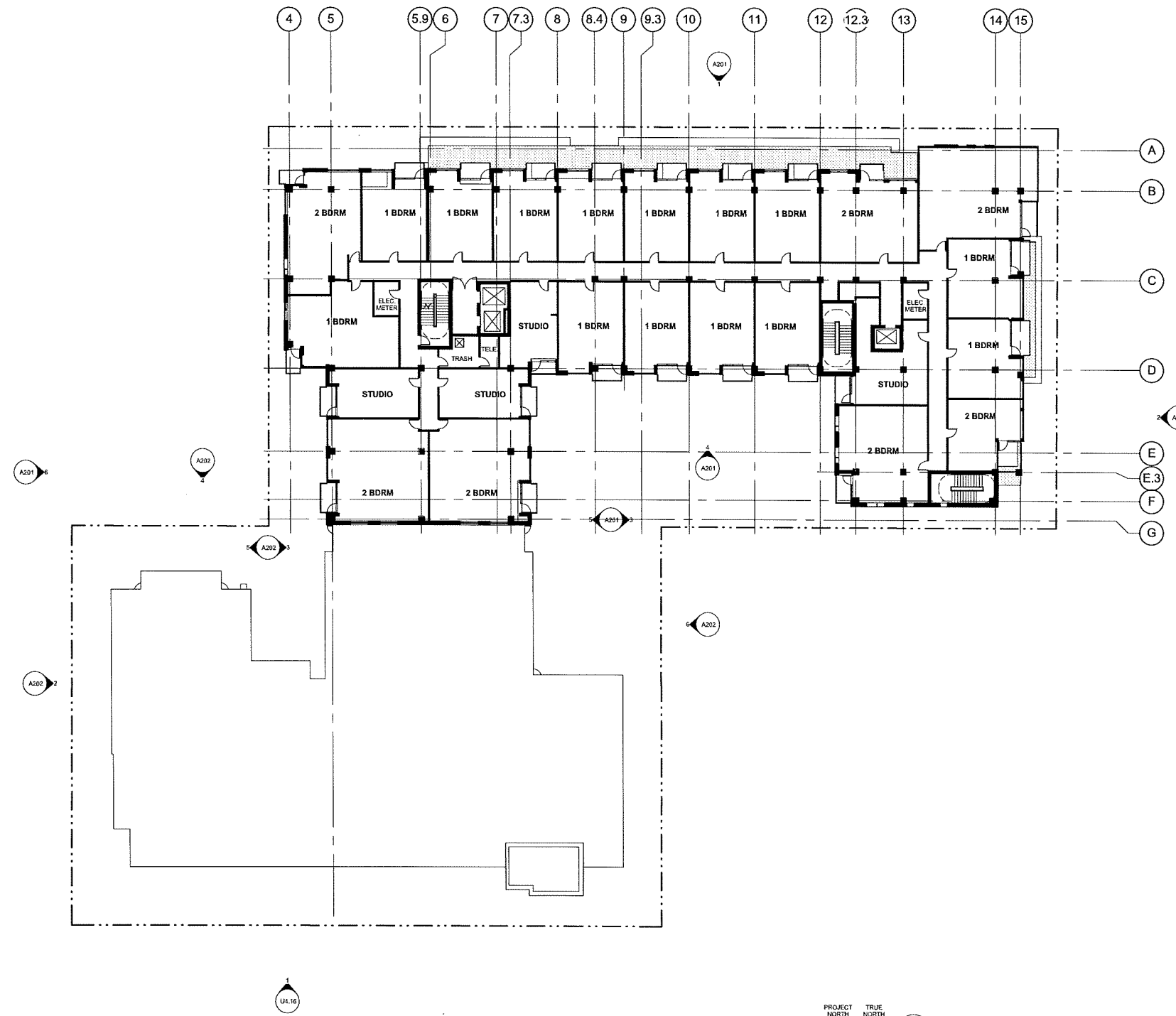
A007



1 OVERALL SIXTH FLOOR PLAN
1/16" = 1'-0"

Consultants:

Notes:



PRELIMINARY
NOT FOR CONSTRUCTION

Date	Issuance/Revisions	Symbol
02/13/13	LAND USE APPLICATION RE-SUBMITTAL	
01/02/13	LAND USE APPLICATION SUBMITTAL	

JOHNSON DAYTON APARTMENTS
Dayton Square

415 W Johnson Street, 226 N
Broom Street, 424 W Dayton
Street

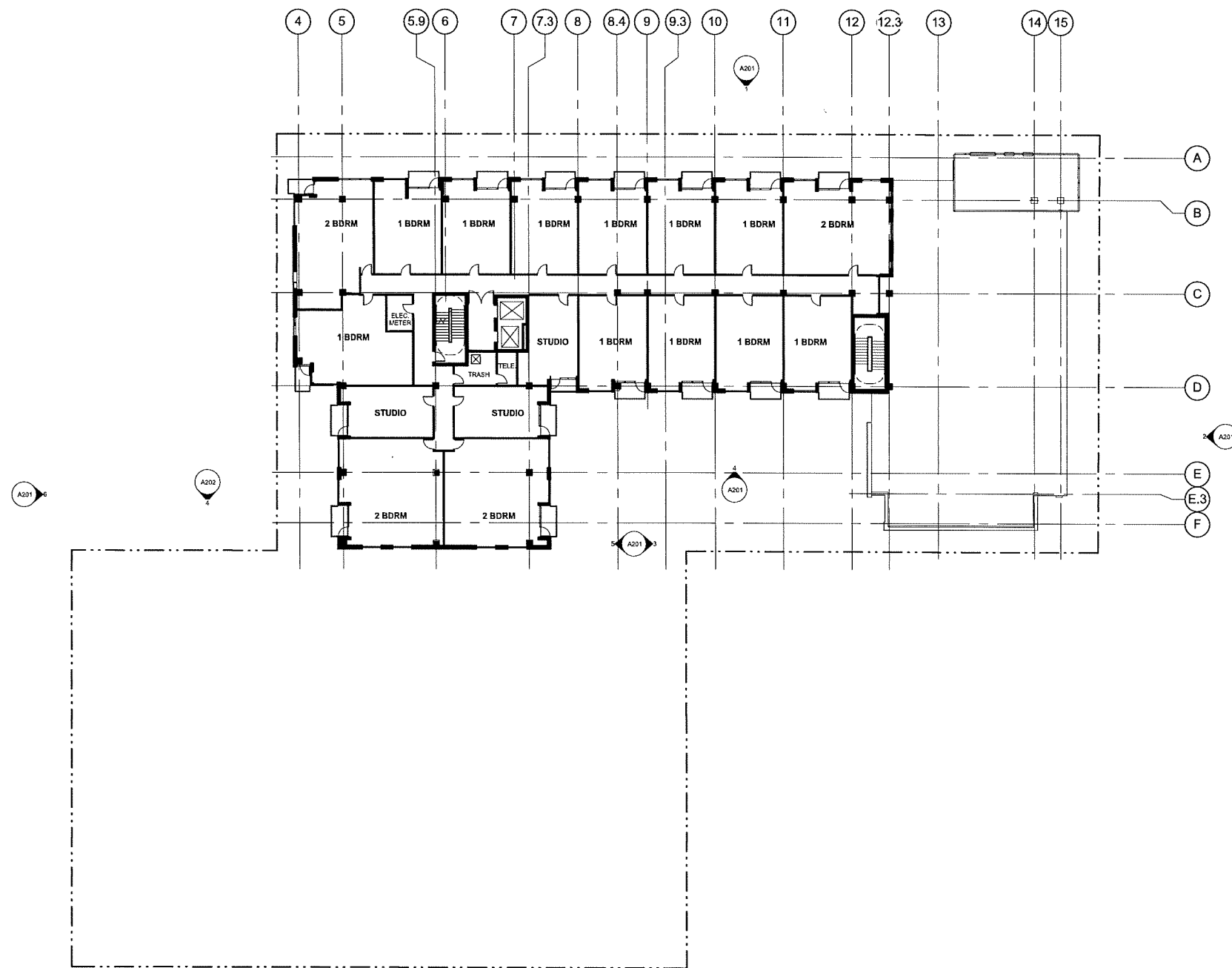
Overall Seventh Floor
Plan

Project Number: 2012.36.00	Drawing Title: A008
Drawn by: PLJ	

PROJECT NORTH TRUE NORTH
1 OVERALL SEVENTH FLOOR PLAN
1/16" = 1'-0"

Consultants:

Notes:



PRELIMINARY
NOT FOR CONSTRUCTION

Date	Issuance/Revisions	Symbol
02/13/13	LAND USE APPLICATION RE-SUBMITTAL	
01/02/13	LAND USE APPLICATION SUBMITTAL	

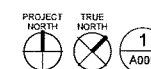
JOHNSON DAYTON APARTMENTS
Dayton Square

415 W Johnson Street, 226 N
Broom Street, 424 W Dayton
Street

OVERALL EIGHTH FLOOR PLAN

PL1
2012.05.00

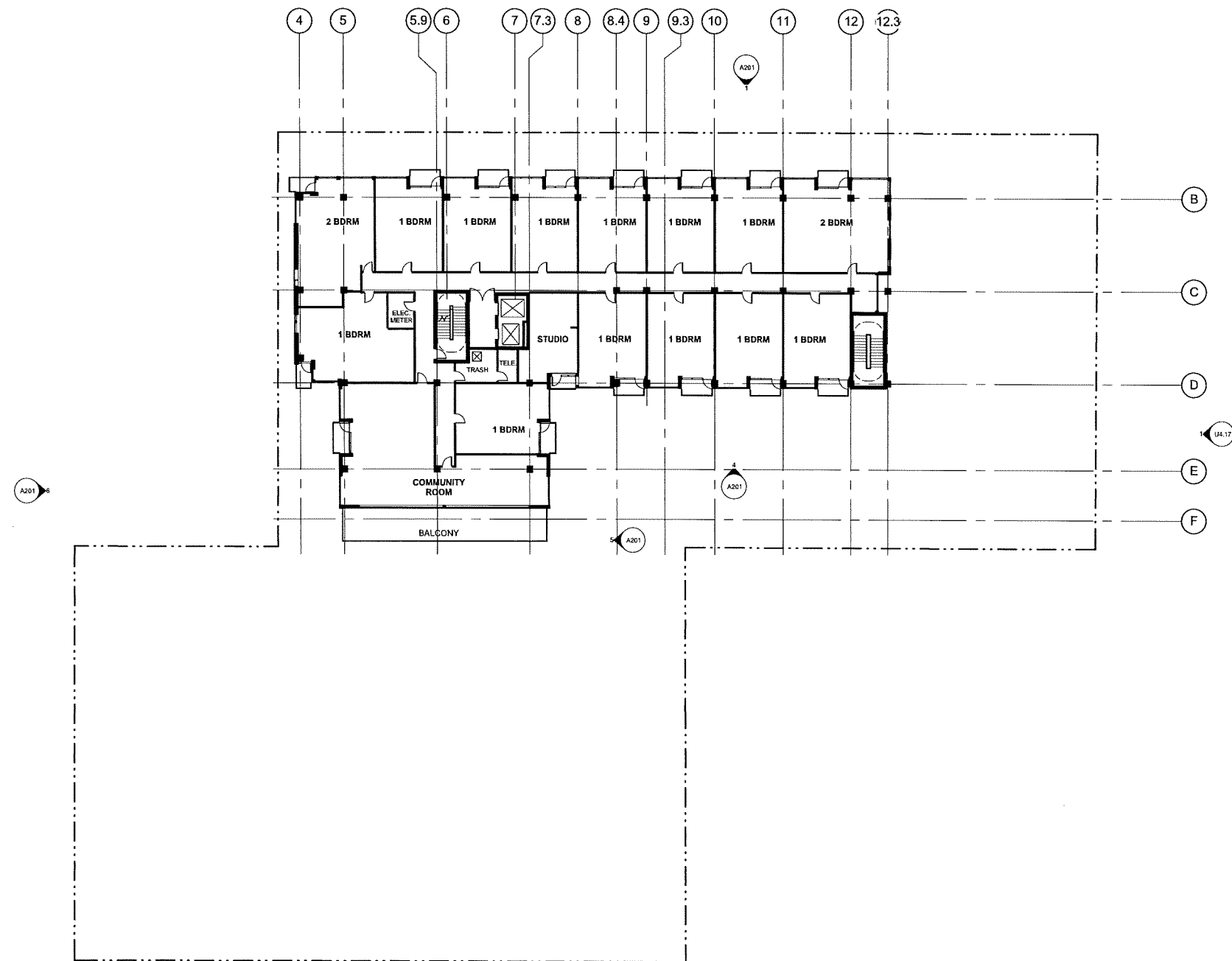
A009



OVERALL EIGHTH FLOOR PLAN (NINTH AND TENTH FLOORS SIMILAR)
1/16" = 1'-0"

Consultants:

Notes:



PRELIMINARY
NOT FOR CONSTRUCTION

Date	Issuance/Revisions	Symbol
02/13/13	LAND USE APPLICATION RE-SUBMITTAL	
01/02/13	LAND USE APPLICATION SUBMITTAL	

JOHNSON DAYTON APARTMENTS
Dayton Square

415 W Johnson Street, 226 N
Broom Street, 424 W Dayton Street

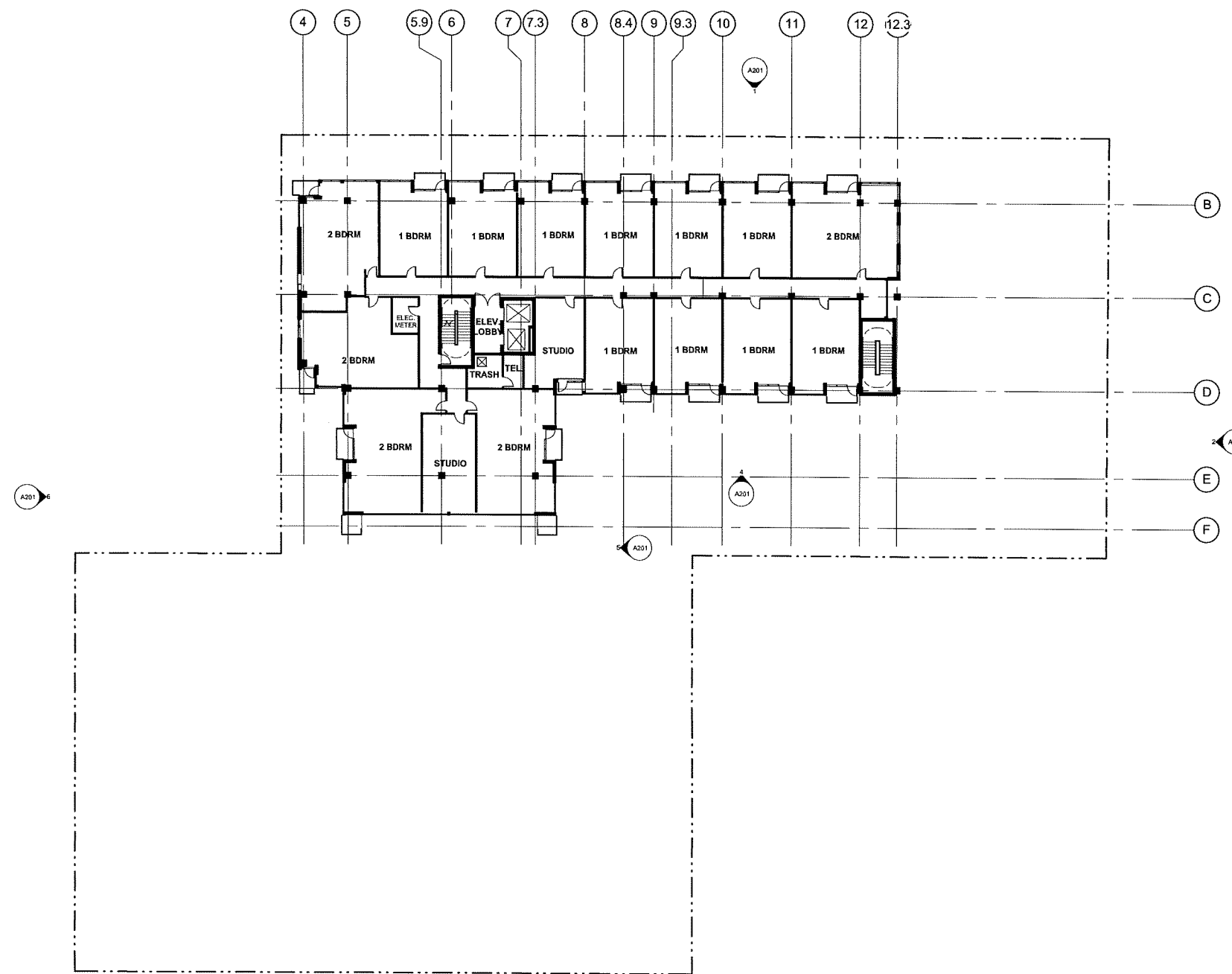
OVERALL ELEVENTH FLOOR PLAN

Project Number: 2012.06.00	Drawing No. A010
Drawn by: PLJ	

PROJECT NORTH TRUE NORTH
1 OVERALL ELEVENTH FLOOR PLAN
1/16" = 1'-0"

Consultant:

Notes:



PRELIMINARY
NOT FOR CONSTRUCTION

Date	Issuance/Revisions	Symbol
02/13/13	LAND USE APPLICATION RE-SUBMITTAL	
01/02/13	LAND USE APPLICATION SUBMITTAL	

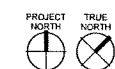
JOHNSON DAYTON APARTMENTS
Dayton Square

415 W Johnson Street, 226 N
Broom Street, 424 W Dayton
Street

OVERALL TWELFTH FLOOR PLAN

2012.36.00
PJL

A011



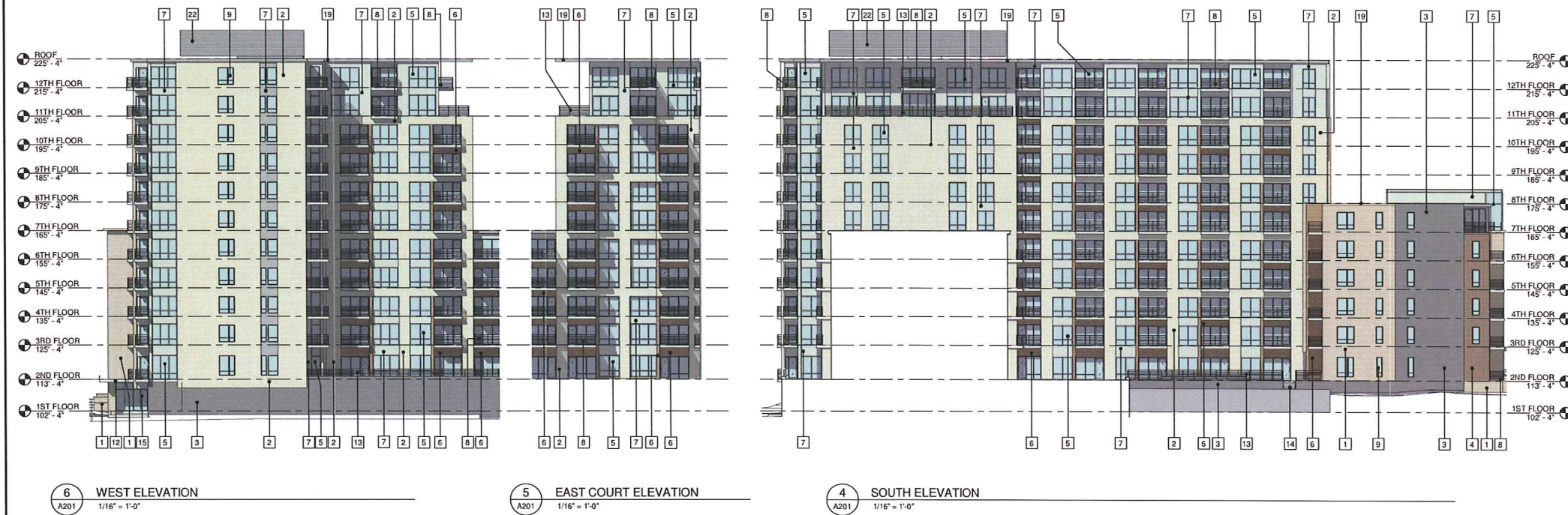
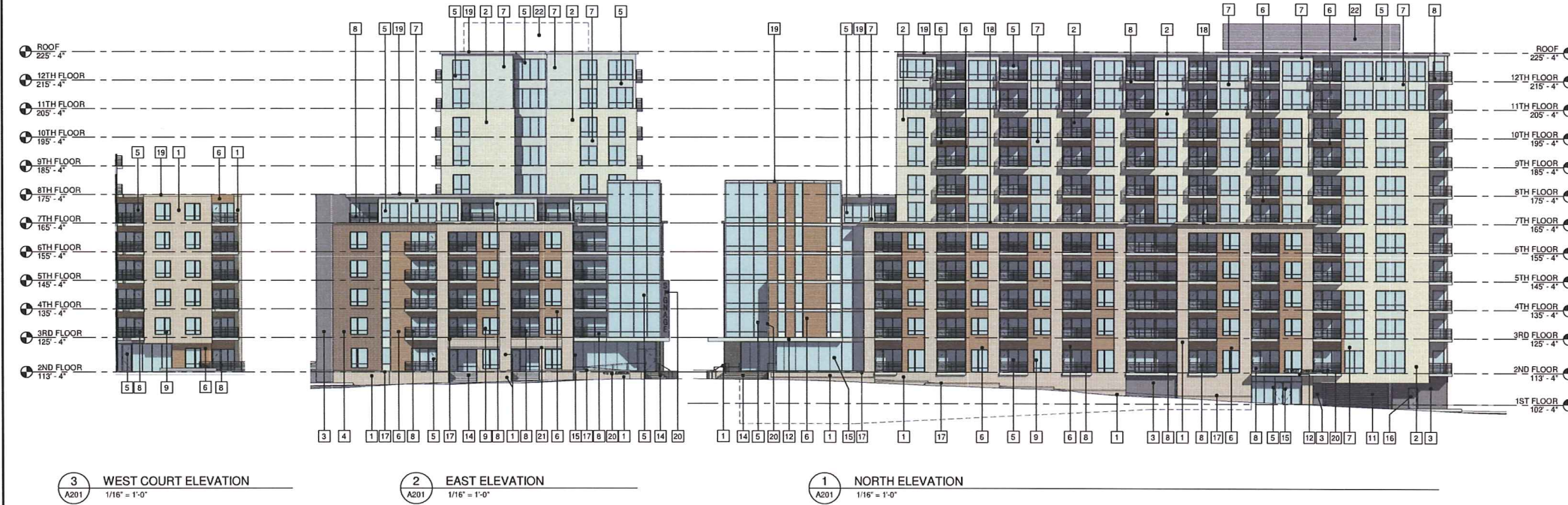
1
A011

OVERALL TWELFTH FLOOR PLAN
1/16" = 1'-0"

Consultants:

Notes:

- 1 BRICK TYPE 1
- 2 BRICK TYPE 2
- 3 BRICK TYPE 3
- 4 BRICK TYPE 4
- 5 WINDOW WALL FRAMING SYSTEM
- 6 FIBER CEMENT SIDING
- 7 METAL WALL PANEL - TYPE 1
- 8 DECK WITH METAL GUARD RAIL
- 9 WINDOW UNIT
- 10 BRICK TYPE 4
- 11 O.H. COILING DOOR
- 12 ENTRY CANOPY
- 13 METAL GUARD RAIL
- 14 CONC. STAIR WITH METAL HANDRAILS
- 15 CURTAINWALL FRAMING
- 16 HOLLOW METAL DOOR
- 17 PRECAST WALL COPING OR ACCENT BAND
- 18 PRECAST CORNICE
- 19 METAL WALL COPING/FLASHING ROOF EDGE
- 20 SIGNAGE AREA
- 21 PAINTED STEEL LINTEL
- 22 METAL WALL PANEL - TYPE 2



PRELIMINARY
NOT FOR CONSTRUCTION

02/13/13	LAND USE APPLICATION RE-SUBMITTAL	
01/02/13	LAND USE APPLICATION SUBMITTAL	
Date	Issuance/Revisions	Symbol

JOHNSON DAYTON APARTMENTS
Dayton Square

415 W Johnson Street, 226 N Broom Street, 424 W Dayton Street

Drawing No.

BUILDING ELEVATIONS

P.J. Lawson
2013.06.09
Date by: Author

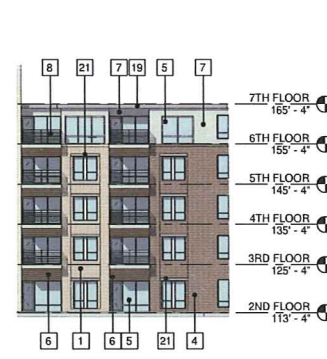
Sheet No.
A201

2/13/2013 7:09:43 AM

Consultants:

Notes:

- 1 BRICK TYPE 1
- 2 BRICK TYPE 2
- 3 BRICK TYPE 3
- 4 BRICK TYPE 4
- 5 WINDOW WALL FRAMING SYSTEM
- 6 FIBER CEMENT SIDING
- 7 METAL WALL PANEL - TYPE 1
- 8 DECK WITH METAL GUARD RAIL
- 9 WINDOW UNIT
- 10 BRICK TYPE 4
- 11 O.H. COILING DOOR
- 12 ENTRY CANOPY
- 13 METAL GUARD RAIL
- 14 CONE, STAR WITH METAL HANDRAILS
- 15 CURTAINWALL FRAMING
- 16 HOLLOW METAL DOOR
- 17 PRECAST WALL COPING OR ACCENT BAND
- 18 PRECAST CORNICE
- 19 METAL WALL COPING FLASHING/ ROOF EDGE
- 20 SIGNAGE AREA
- 21 PAINTED STEEL LINTEL
- 22 METAL WALL PANEL - TYPE 2



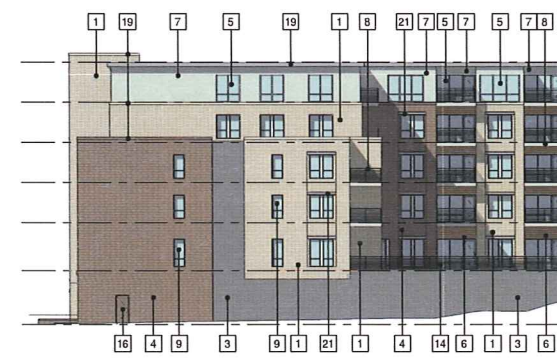
3 WEST COURT ELEVATION
A202 1/16" = 1'-0"



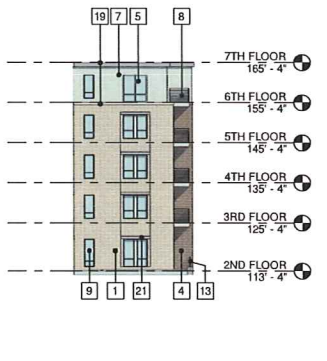
2 WEST ELEVATION - DAYTON BUILDING
A202 1/16" = 1'-0"



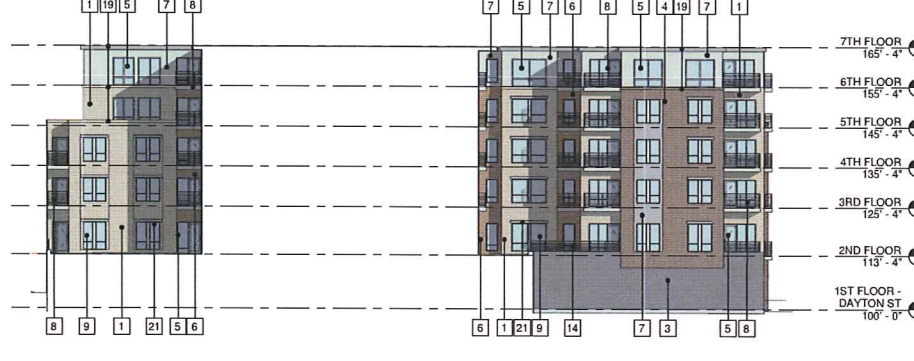
1 SOUTH ELEVATION
A202 1/16" = 1'-0"



6 EAST ELEVATION
A202 1/16" = 1'-0"



5 EAST COURT ELEVATION
A202 1/16" = 1'-0"



4 NORTH ELEVATION
A202 1/16" = 1'-0"

PRELIMINARY
NOT FOR CONSTRUCTION

Date	Issuance/Revisions	Symbol
02/13/13	LAND USE APPLICATION RE-SUBMITTAL	
01/03/13	LAND USE APPLICATION SUBMITTAL	

JOHNSON DAYTON APARTMENTS
Dayton Square

415 W Johnson Street, 226 N
Broom Street, 424 W Dayton
Street

BUILDING ELEVATIONS

Project Number: 2012.35.00
Drawing No: **A202**
Drawn By: FLJ



WEST JOHNSON & NORTH BROOM STREET CORNER



WEST DAYTON STREET - EAST END



WEST DAYTON STREET - WEST END



BUILDING MASSING FROM NORTH



BUILDING MASSING FROM SOUTH

Consultants:

Notes:

PRELIMINARY
NOT FOR CONSTRUCTION

Date	Issuance Revisions	Symbol
02/13/13	LAND USE APPLICATION RE-SUBMITTAL	
01/02/13	LAND USE APPLICATION SUBMITTAL	

JOHNSON DAYTON APARTMENTS
Dayton Square

415 W Johnson Street, 225 N Broom Street, 424 W Dayton Street

Scale 1/8" = 1'-0"

3D IMAGES

PL Project Number: 2012.26.00
Drawn by: Author

A203

2/13/2013 9:39:54 AM

