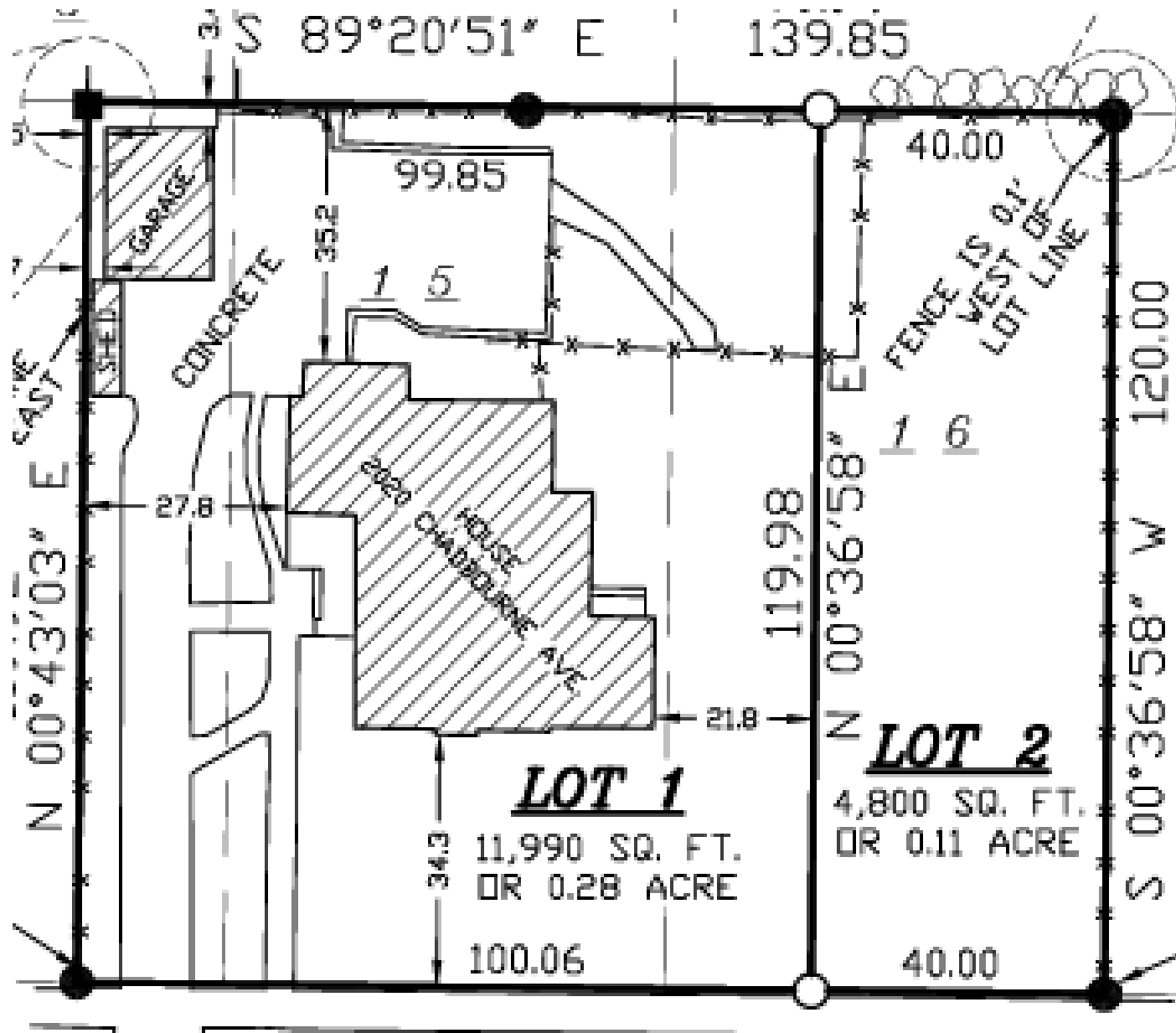


2012-2022 Chadbourne Avenue
Certificate of Appropriateness
November 13, 2023

Proposed Work

- Resolve underlying lot lines
- Adjust lot line between two adjacent parcels







SIMILAR VARIING
LARGE & SMALL
LOT SIZES ON
THIS BLOCK

SIMILAR LARGE
LOT SIZE

SIMILAR SMALL
LOT SIZE

2012-2020
CHADBOURNE
AVE SITE

SIMILAR VARIING
LARGE & SMALL
LOT SIZES ON
THIS BLOCK

SIMILAR LARGE
LOT SIZE

SIMILAR SMALL
LOT SIZE

SIMILAR VARIING
LARGE & SMALL
LOT SIZES ON
THIS BLOCK



Applicable Standards

MGO 41.18 (4)

Land Divisions and Combinations . The commission shall approve a certificate of appropriateness for land divisions, combinations, and subdivision plats of landmark sites and properties in historic districts, unless it finds that the proposed lot sizes adversely impact the historic character or significance of a landmark, **are incompatible with adjacent lot sizes, or fail to maintain the general lot size pattern of the historic district.**



Staff Recommendation

Staff believes that the standards for granting a Certificate of Appropriateness are met and recommends the Landmarks Commission approve the project as proposed.

