

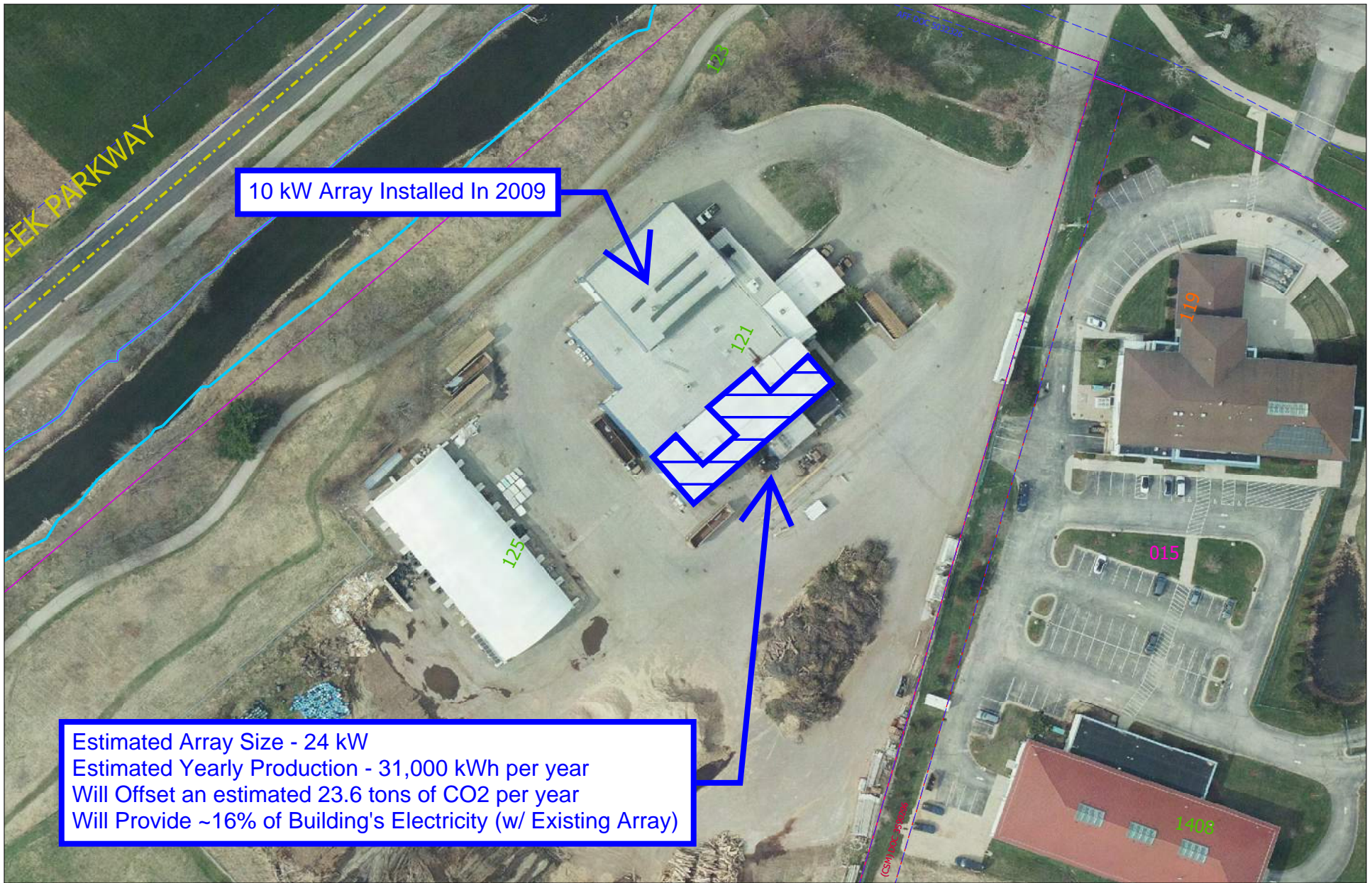


Note: 1" = 500'

City of Madison, WI - GIS/Mapping data

Printed By: enwhm

Disclaimer: The City makes no representation about the accuracy of these records and shall not be liable for any damages



10 kW Array Installed In 2009

Estimated Array Size - 24 kW
Estimated Yearly Production - 31,000 kWh per year
Will Offset an estimated 23.6 tons of CO2 per year
Will Provide ~16% of Building's Electricity (w/ Existing Array)

Note: 1" = 100'

City of Madison, WI - GIS/Mapping data

Printed By: enwhm

Disclaimer: The City makes no representation about the accuracy of these records and shall not be liable for any damages