

**PLANT LIST**

KEY	SCIENTIFIC NAME	COMMON NAME	QTY	SIZE	ROOT	STEM
<b>DECIDUOUS TREES</b>						
AA	<i>Acer x freemanii 'Armstrong'</i>	Armstrong Maple	4	2"	B&B	
CO	<i>Celtis occidentalis</i>	Common Hackberry	1	2"	B&B	
<b>EVERGREEN TREES</b>						
PG	<i>Picea glauca var. densata</i>	Black Hills Spruce	4	6'	B&B	
TO	<i>Thuja occidentalis 'Smaragd'</i>	Emerald Arborvitae	7	5'	B&B	
<b>EVERGREEN SHRUBS</b>						
Jc	<i>Juniperus chinensis 'Daub's Frosted'</i>	Daub's Frosted Juniper	2	#5	Cont.	
Tm	<i>Taxus x media 'Tautonii'</i>	Taunton Yew	6	#5	Cont.	
<b>DECIDUOUS SHRUBS</b>						
Am	<i>Aronia melanocarpa 'Morton'</i>	Iroquois Beauty Black Chokeberry	2	#3	Cont.	
Hp	<i>Hydrangea paniculata 'Bulk'</i>	Quick Fire Hydrangea	5	#5	Cont.	
Pa	<i>Physocarpus opulifolius 'Jefam'</i>	Amber Jubilee Ninebark	3	#5	Cont.	
Po	<i>Physocarpus opulifolius</i>	Tiny Wine Ninebark	6	#3	Cont.	
Vd	<i>Viburnum dentatum 'Christom'</i>	Blue Muffin Arrowwood Viburnum	3	#5	Cont.	
Wf	<i>Weigela florida 'Verweig'</i>	My Monet Weigela	3	#5	Cont.	
<b>ORNAMENTAL GRASSES &amp; PERENNIALS</b>						
ca	<i>Calamagrostis x acutiflora 'Karl Foerster'</i>	Karl Foerster Feather Reed Grass	17	#1	Cont.	
hr	<i>Hemerocallis 'Rosy Returns'</i>	Rosy Returns Daylily	8	#1	Cont.	
ms	<i>Miscanthus sinensis 'Purpurascens'</i>	Purple Maiden Grass	8	#1	Cont.	
pa	<i>Perovskia atriplicifolia 'Little Spire'</i>	Little Spire Russian Sage	6	#1	Cont.	

**City of Madison, WI Landscape Worksheet**  
Planned Development District  
2/22/2023

Cottage Grove Road Storage

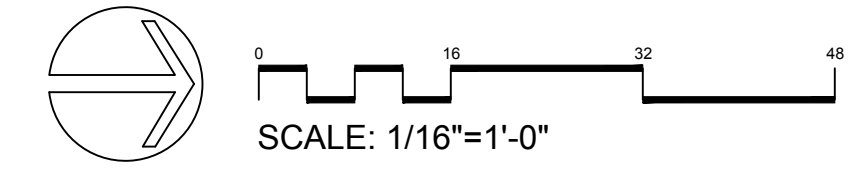
DEVELOPED LOTS	SQUARE FEET	LANDSCAPE POINTS REQ.
Total Developed Area		
52,669 sf (lot) - 22,366 (building footprint)	30,303	505

PLANT TYPE / ELEMENT	POINT VALUE	QUANTITY	TOTAL POINTS
Overstory Deciduous	35	5	175
Tall Evergreen Tree	35	4	140
Ornamental Tree	15	0	0
Upright Evergreen Shrub (i.e. arborvitae)	10	7	70
Shrub, deciduous	3	22	66
Shrub, evergreen	4	8	32
Ornamental Grasses/Perennials	2	39	78
Ornamental/Decorative Fencing or Wall (4pts / 10LF)	4		0
Existing Significant Specimen Tree	14		0
Landscape Furniture for public seating and/or transit connections	5		0
<b>POINTS PROVIDED</b>			<b>561</b>

**STREET TREE NOTE:**  
Contractor shall install tree protection fencing in the area between the curb and sidewalk and extend it at least 5 feet from both sides of the tree along the length of the terrace. No excavation is permitted within 5 feet of the outside edge of a tree trunk. If excavation within 5 feet of any tree is necessary, contractor shall contact City Forestry (266-4816) prior to excavation to assess the impact to the tree and root system. Tree pruning shall be coordinated with City Forestry prior to the start of construction. Tree protection specifications can be found in section 107.13 of *City of Madison Standard Specifications for Public Works Construction* -

Any tree removals that are required for construction after the development plan is approved will require at least a 72 hour wait period before a tree removal permit can be issued by Forestry, to notify the Alder of the change in the tree plan.

- Decorative Stone Mulch  
1.5" Capitol Sand & Gravel washed stone over weed barrier fabric with Dimex EdgePro polyvinyl (black plastic) edging
- Turf grass seed with erosion netting



**LANDSCAPE PLAN**  
**L 1.0**

Date: 2023.02.23  
Scale: 1/16"=1'-0"  
Designer: bf / ks  
Job #

Seal:  
To protect against legal liability, the plans presented herein are "schematic," and should not be outsourced as "biddable" or "construction documents" unless approved by the Landscape Designer. This is not an original document unless stamped in red, as ORIGINAL.

Revisions:

Reference Name: