

PLAT OF DISCONTINUANCE

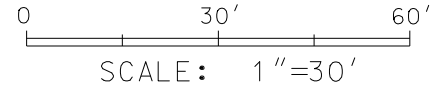
EXHIBIT "A"

Part of West Lawn Avenue and part of
 Spooner Street, located in the NE 1/4
 of the SW 1/4 of Section 22, T7N, R9E,
 City of Madison, Dane County, Wisconsin

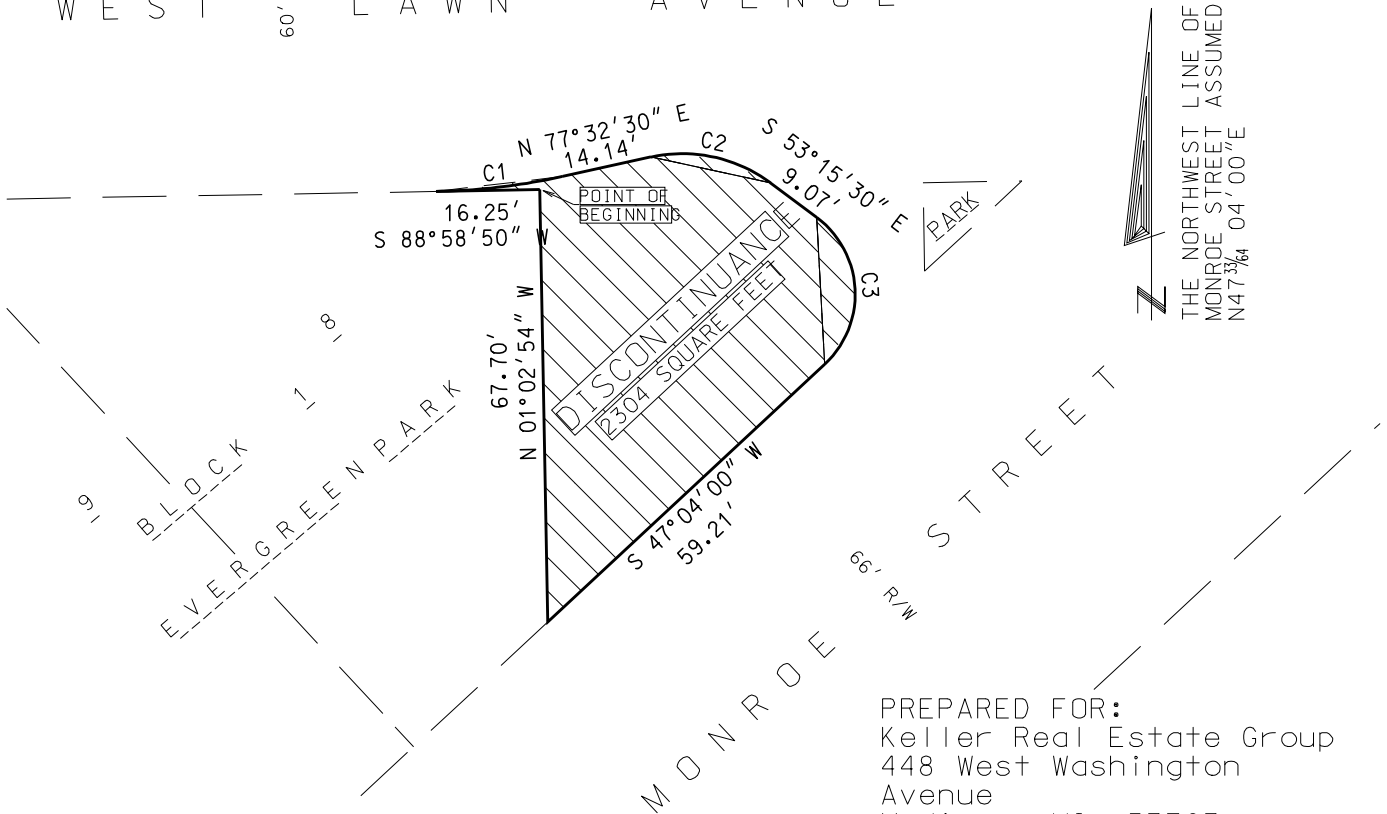
1
 BLOCK 28
 FIRST ADDITION
 TO WEST LAWN

60' R/W
 SPOONER
 STREET

1
 BLOCK 29
 FIRST ADDITION
 TO WEST LAWN



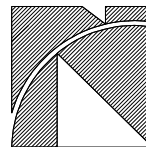
60' R/W
 WEST LAWN AVENUE



PREPARED FOR:
 Keller Real Estate Group
 448 West Washington
 Avenue
 Madison, WI 53703

REFERENCE: OFFICE MAP NO. 525
 CURVE TABLE

CURVE	ARC LENGTH	CENTRAL ANGLE	RADIUS	CHORD LENGTH	CHORD BEARING
C1	19.96'	11°26'20"	100.00'	19.93'	N 83°15'40" E
C2	19.75'	49°12'00"	23.00'	19.15'	S 77°51'30" E
C3	26.27'	100°19'30"	15.00'	23.04'	S 03°05'45" E



Keith Notbohm
 Land Surveying, Inc.
 6314 Odana Road, Suite A
 Madison, Wisconsin 53719
 (608) 277-0503

OFFICE MAP NO. 623 S
 SHEET 1 OF 2

PREPARED: June 2, 2005