

SECTION 2 - JUDGE DOYLE SQUARE - BLOCK 88

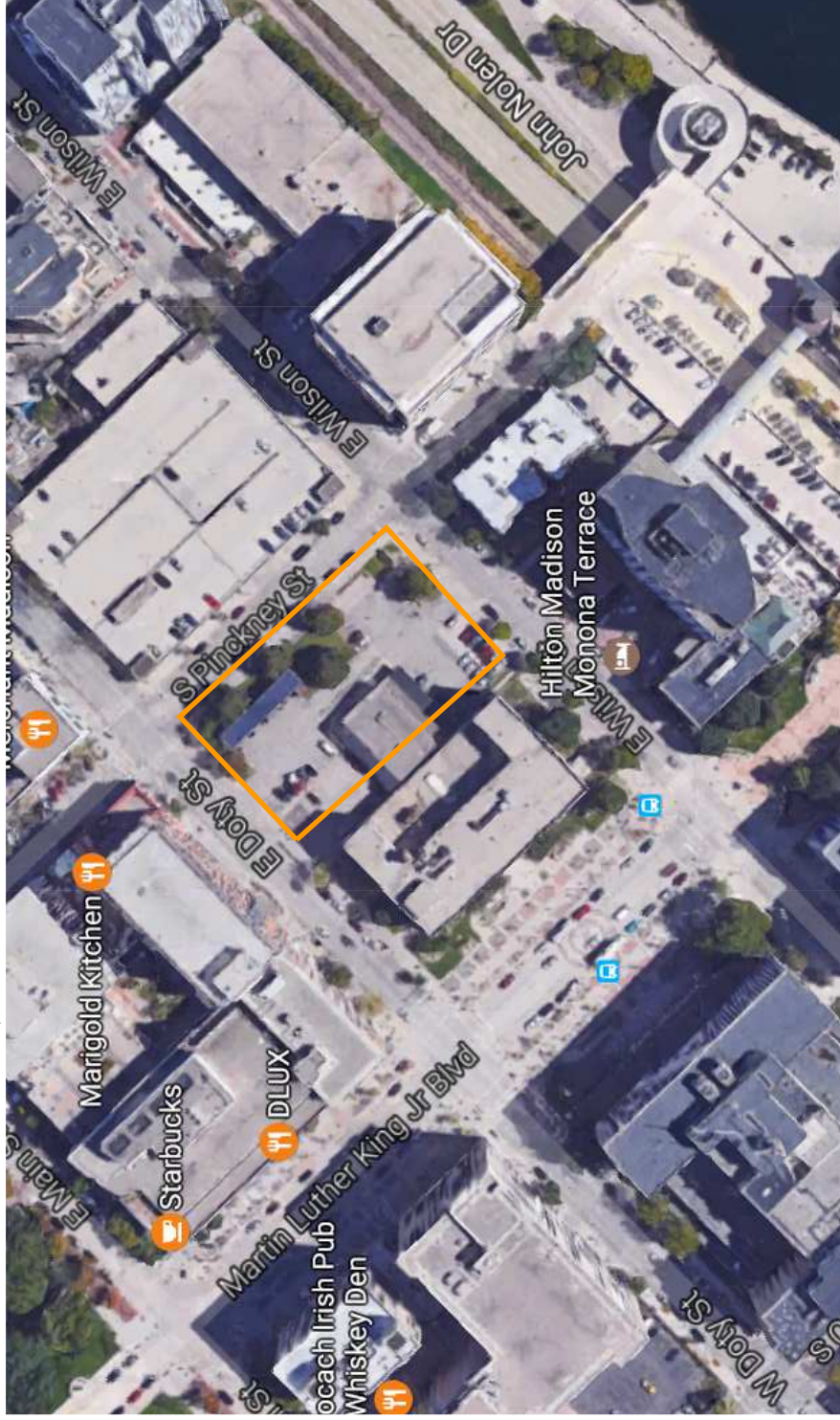
CITY OF MADISON PARKING FACILITY
PRIVATE APARTMENT DEVELOPMENT

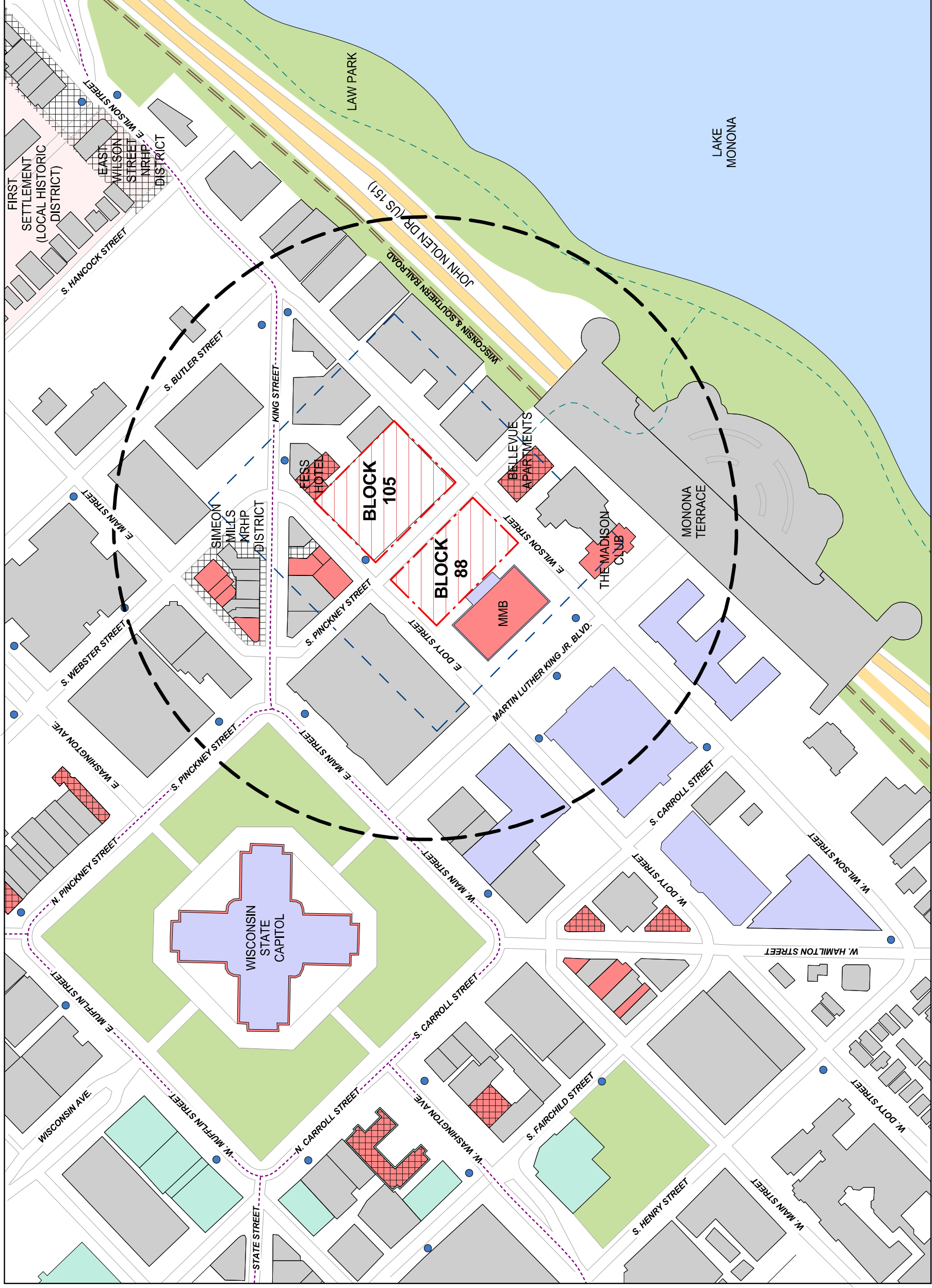


JUDGE DOYLE GARAGAE
DOTY/PINCKNEY/WILSON/MMB
MUNIS #11471

CONTRACT NUMBER #7952
THIS CONTRACT IS FOR THE NEW PUBLIC PARKING GARAGE.
ENGINEERING ESTIMATE \$40M

ALDER DISTRICT 4
MIKE VERVEER

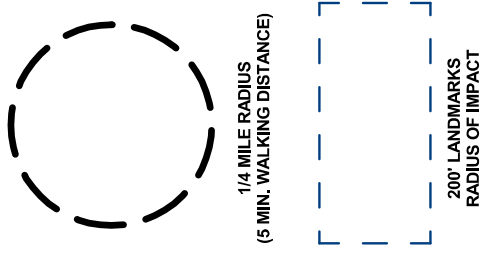


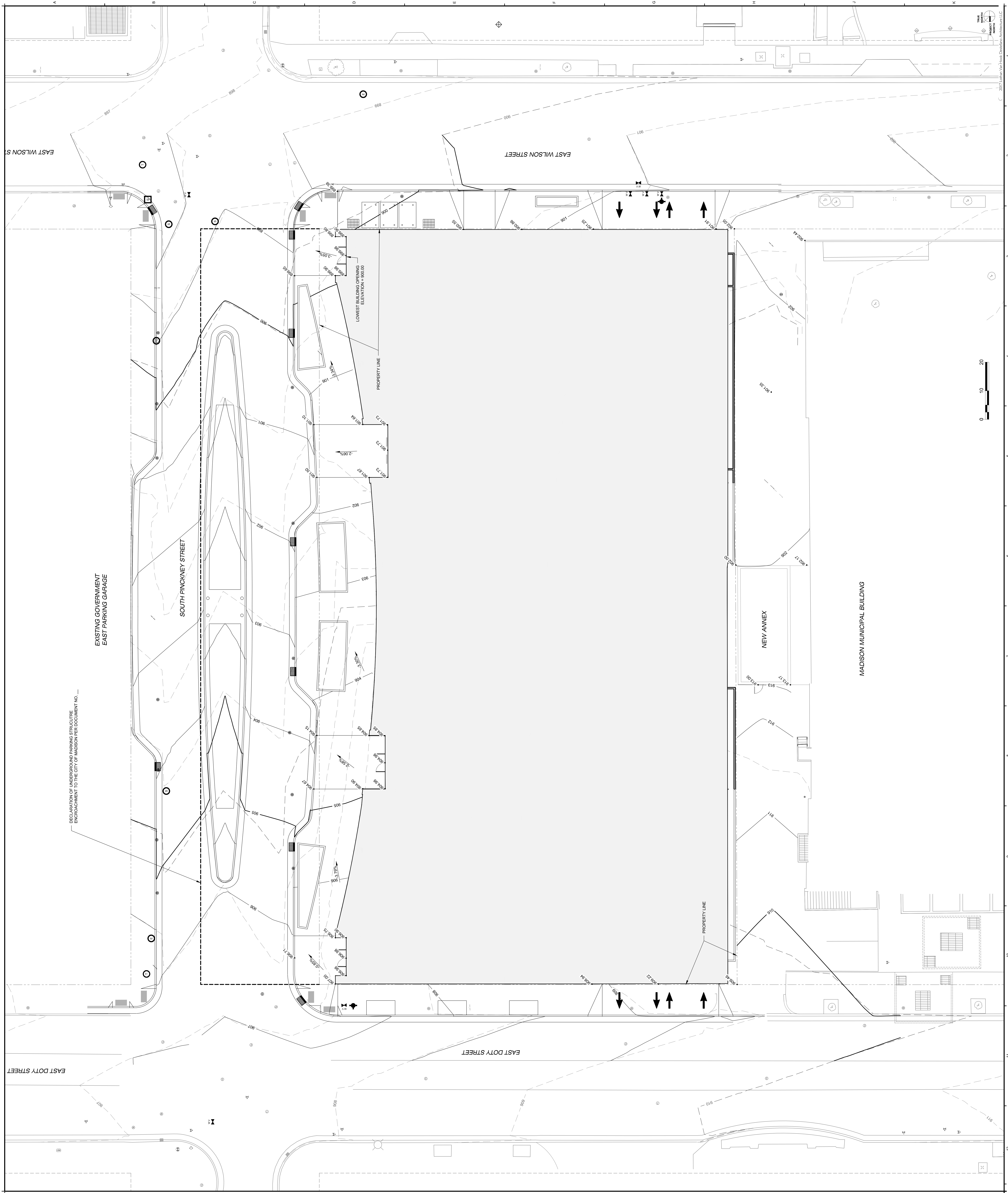


SITE

- BLOCK 88 - JUDGE DOYLE SQUARE
- CITY OF MADISON PARKING FACILITY
- BLOCK 105 - JUDGE DOYLE SQUARE
- PRIVATE DEVELOPMENT

- NATIONAL REGISTER OF HISTORIC PLACES
- MADISON LANDMARK
- GOVERNMENT BUILDINGS
- LAKE MONONA
- MAJOR INSTITUTIONS (CULTURE - RELIGION - EDUCATION)
- JOHN NOLEN DR. (US 151)
- PARKS / GREEN SPACE
- BUS STOP
- BICYCLE ROUTE
- CYCLEWAY (PAVED, OFF-STREET)
- WISCONSIN & SOUTHERN RAILROAD





LEGEND:

- EXISTING CONTOUR LINES
- PROPOSED CONTOUR LINES
- GRADING LIMITS
- FINISHED / PROPOSED SPOT ELEVATION
- FINISHED / PROPOSED SLOPE

IN PROGRESS 03/10/2017

NO.	DESCRIPTION	DATE
1	ISSUED FOR SCHEMATIC DESIGN	03/10/2017
2	FOR PERMITTING	03/10/2017

JUDGE DOYLE SQUARE - BLOCK 88
 JUDGE DOYLE SQUARE
 CITY OF MADISON, 53703

ARCHITECT:
lothan vanhook destefano
 ARCHITECTURE LLC

ASSOCIATE ARCHITECT:
 INSITE CONSULTING ARCHITECTS

PARKING CONSULTANT:
WALKER
 PARKING CONSULTANTS

STRUCTURAL ENGINEER AND PARTNER:
MEYER ENGINEERS
 MEYER ENGINEERS, AFFILIATED ENGINEERS

CIVIL ENGINEERS:
Mead & Hunt
 CIVIL ENGINEERS

LANDSCAPE ARCHITECT:
WOLFF LANDSCAPE ARCHITECTURE
 LANDSCAPE ARCHITECTURE FIRM, INC.

Drawing Title:
BLOCK 88 SITE GRADING PLAN

Drawn By:
 J. H. H. H.

Checked By:
 J. H. H. H.

Approved:
 J. H. H. H.

Job Number:
C-121.0

15-101

DECLARATION OF UNDERGROUND PARKING STRUCTURE ENCRICHMENT TO THE CITY OF MADISON PER DOCUMENT NO. _____

EXISTING GOVERNMENT EAST PARKING GARAGE

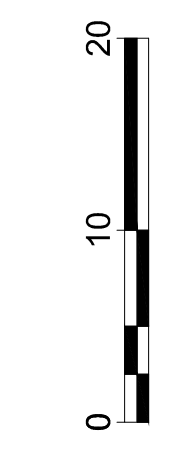
SOUTH PINCKNEY STREET

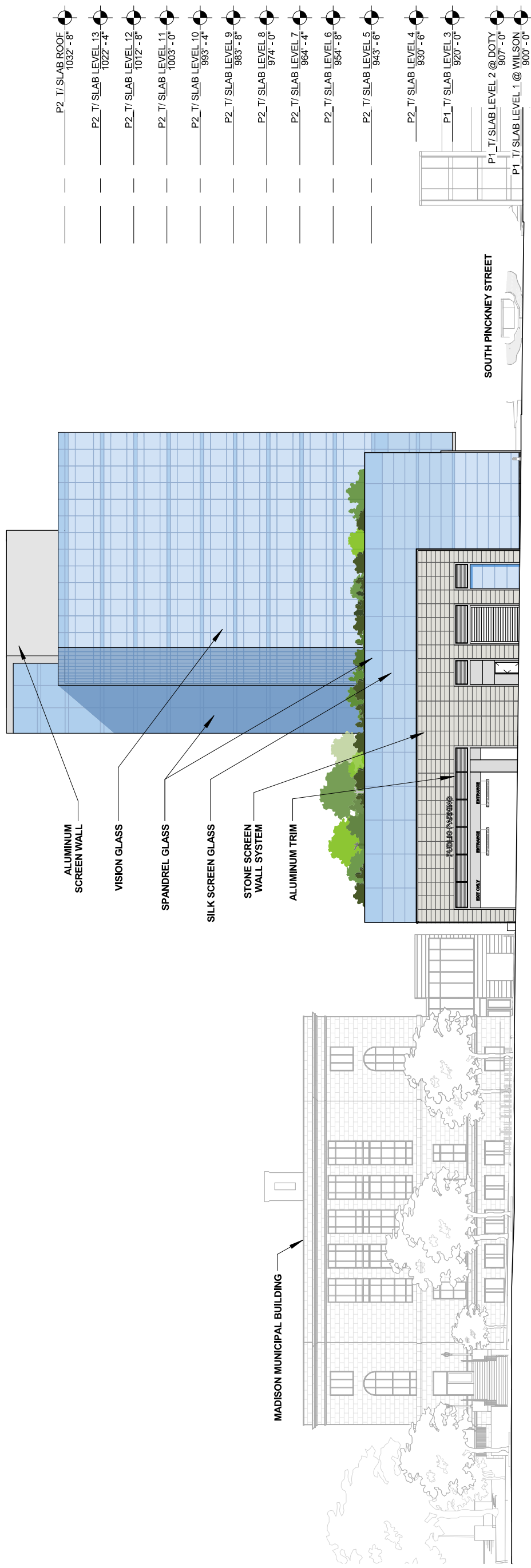
EAST WILSON STREET

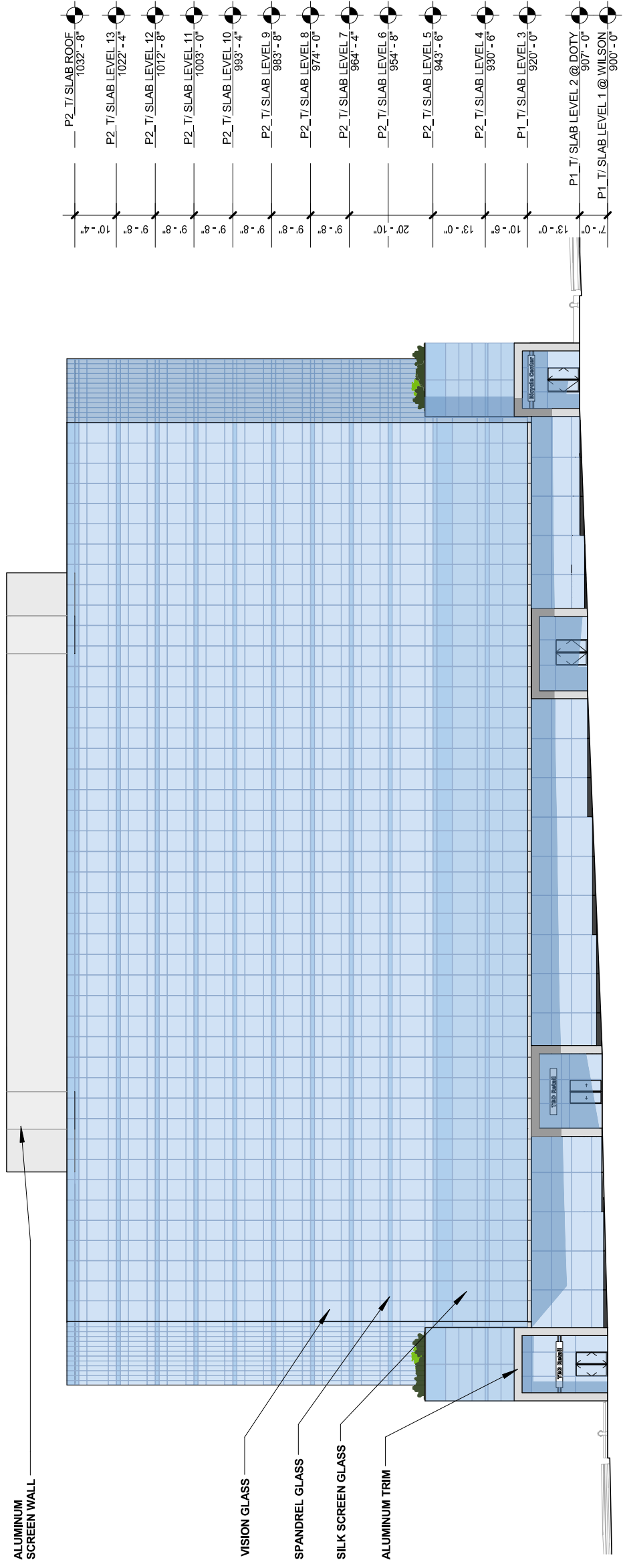
EAST DOTY STREET

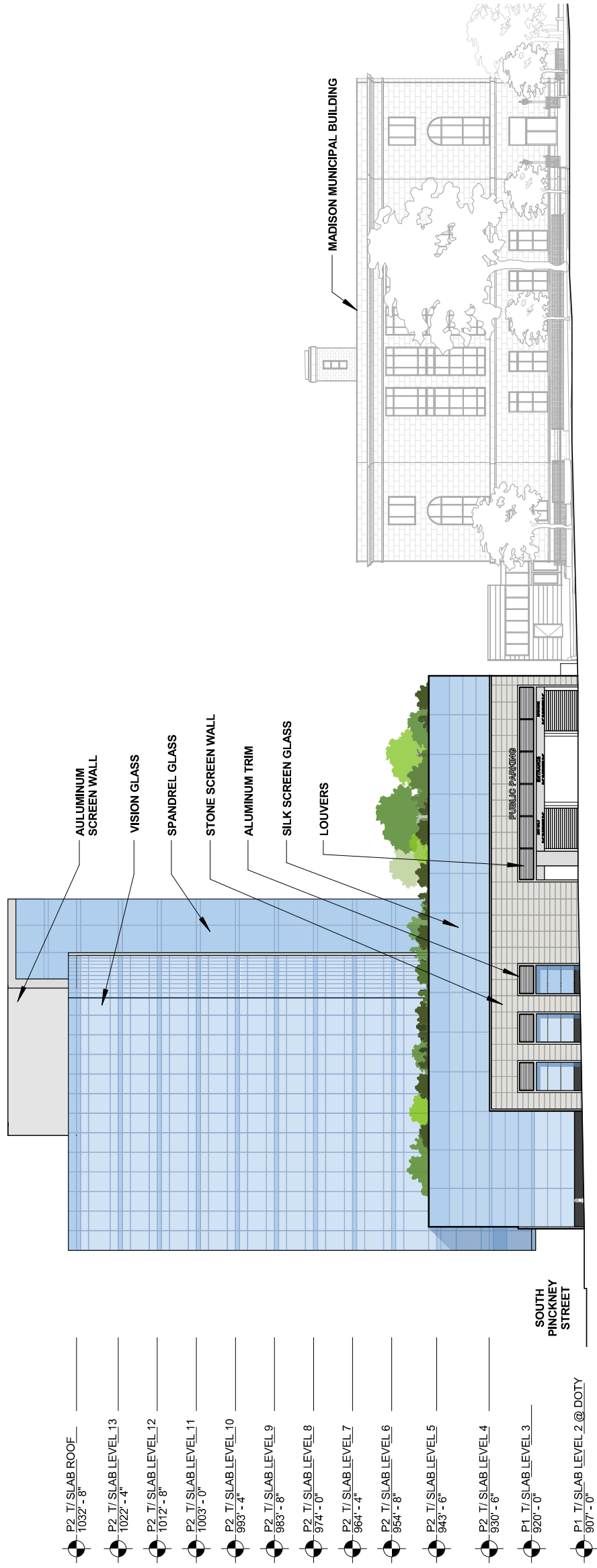
NEW ANNEX

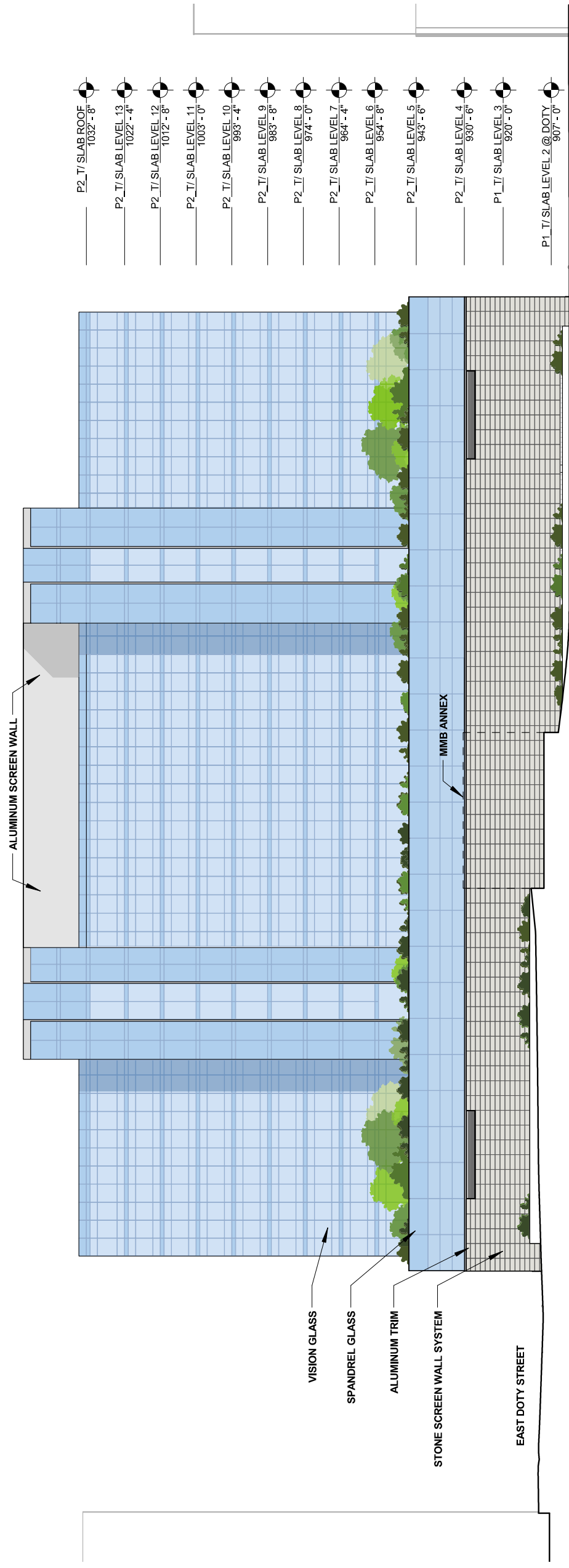
MADISON MUNICIPAL BUILDING











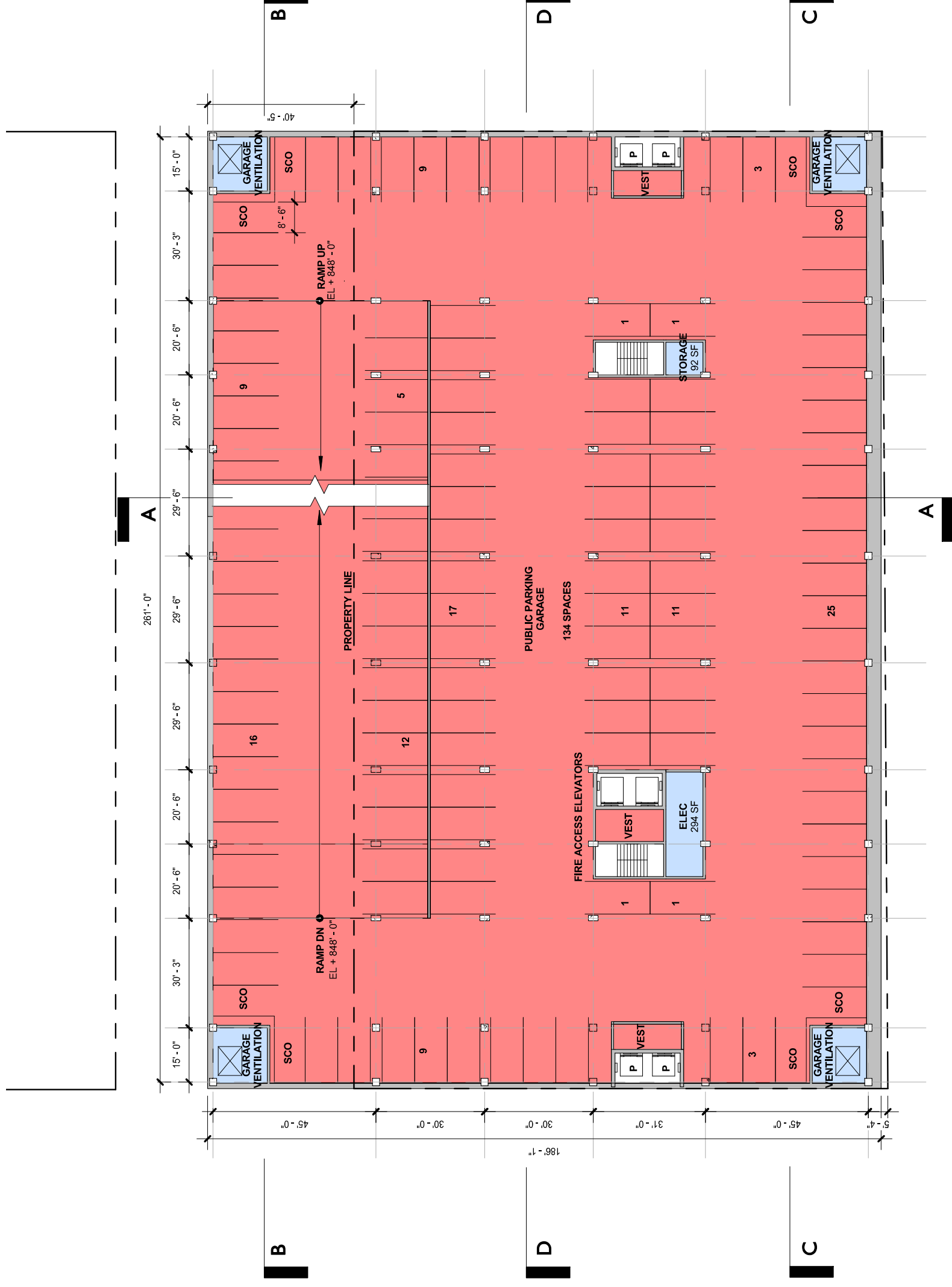
- APARTMENTS
- RETAIL
- SERVICE
- APARTMENT PARKING
- PUBLIC PARKING
- GREEN ROOF

CAR COUNT PUBLIC
9'-0" 90 DEGREE STANDARD SPACE

TIER	STANDARD	CAR ACCESSIBLE	VAN ACCESSIBLE	TOTAL
D1 LEVEL U5	57	0	0	57
D1 LEVEL U4	134	0	0	134
D1 LEVEL U3	134	0	0	134
D1 LEVEL U2	130	3	0	133
D1 LEVEL U1	118	6	2	126
D1 LEVEL U0	54	1	1	56
TOTAL	627	10	3	640

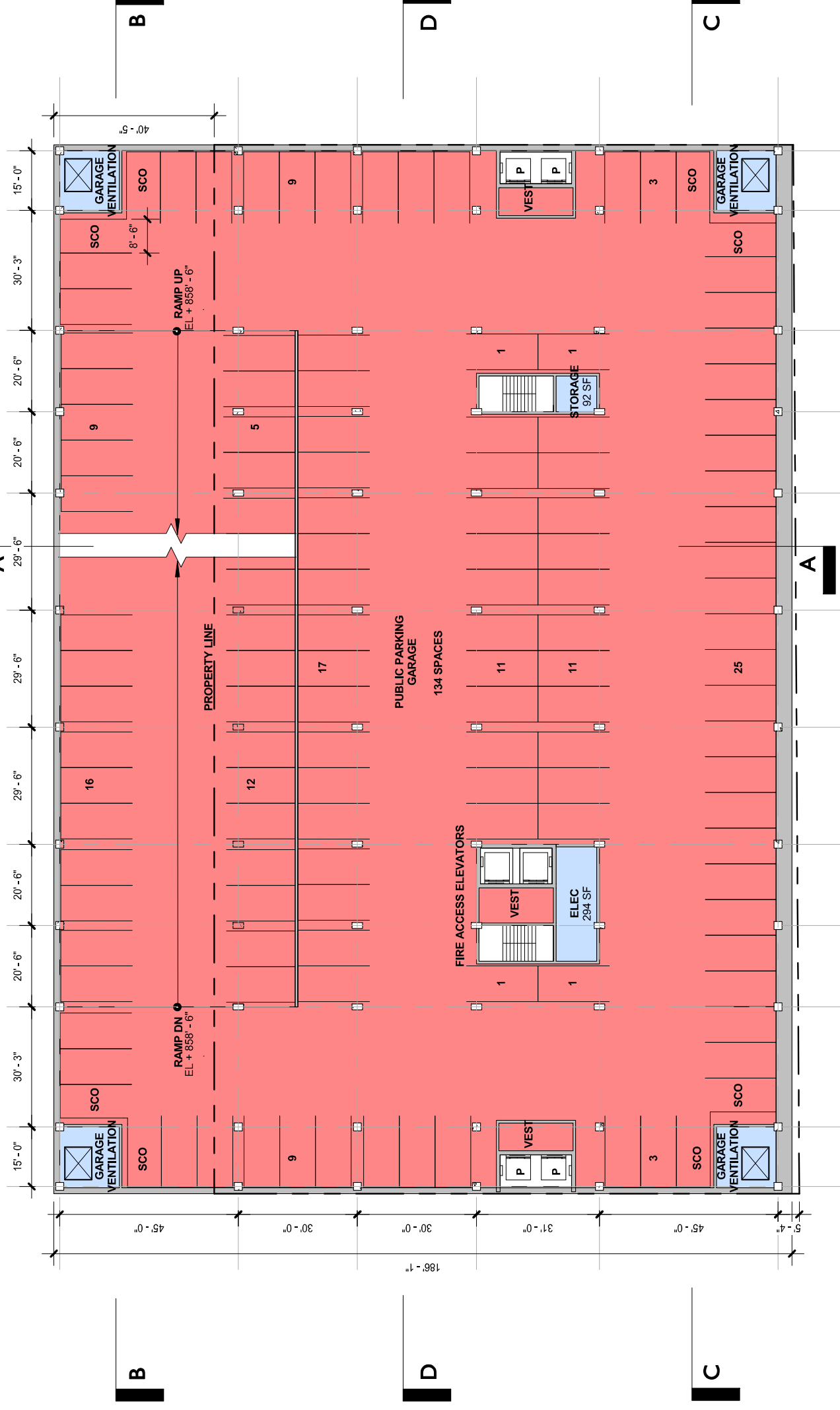
640 PARKING SPACES TOTAL w/ LONG SPAN STRUCTURE

NOTE: SHORT SPAN PARKING STRUCTURE OPTION -16 CARS FOR A TOTAL OF 624 CARS



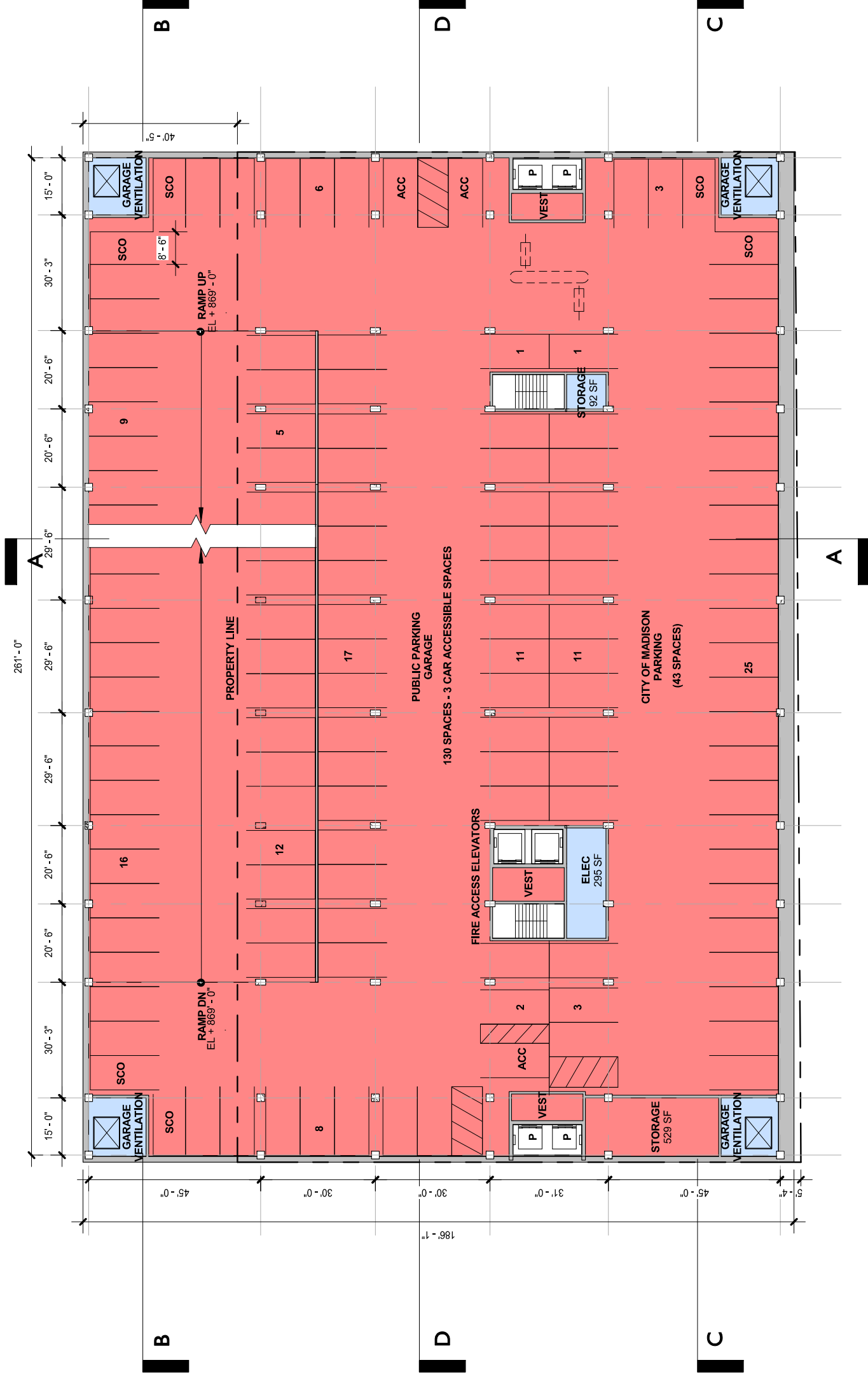
TOTAL GROSS SF: 43,127 SF

- APARTMENTS
- RETAIL
- SERVICE
- APARTMENT PARKING
- PUBLIC PARKING
- GREEN ROOF



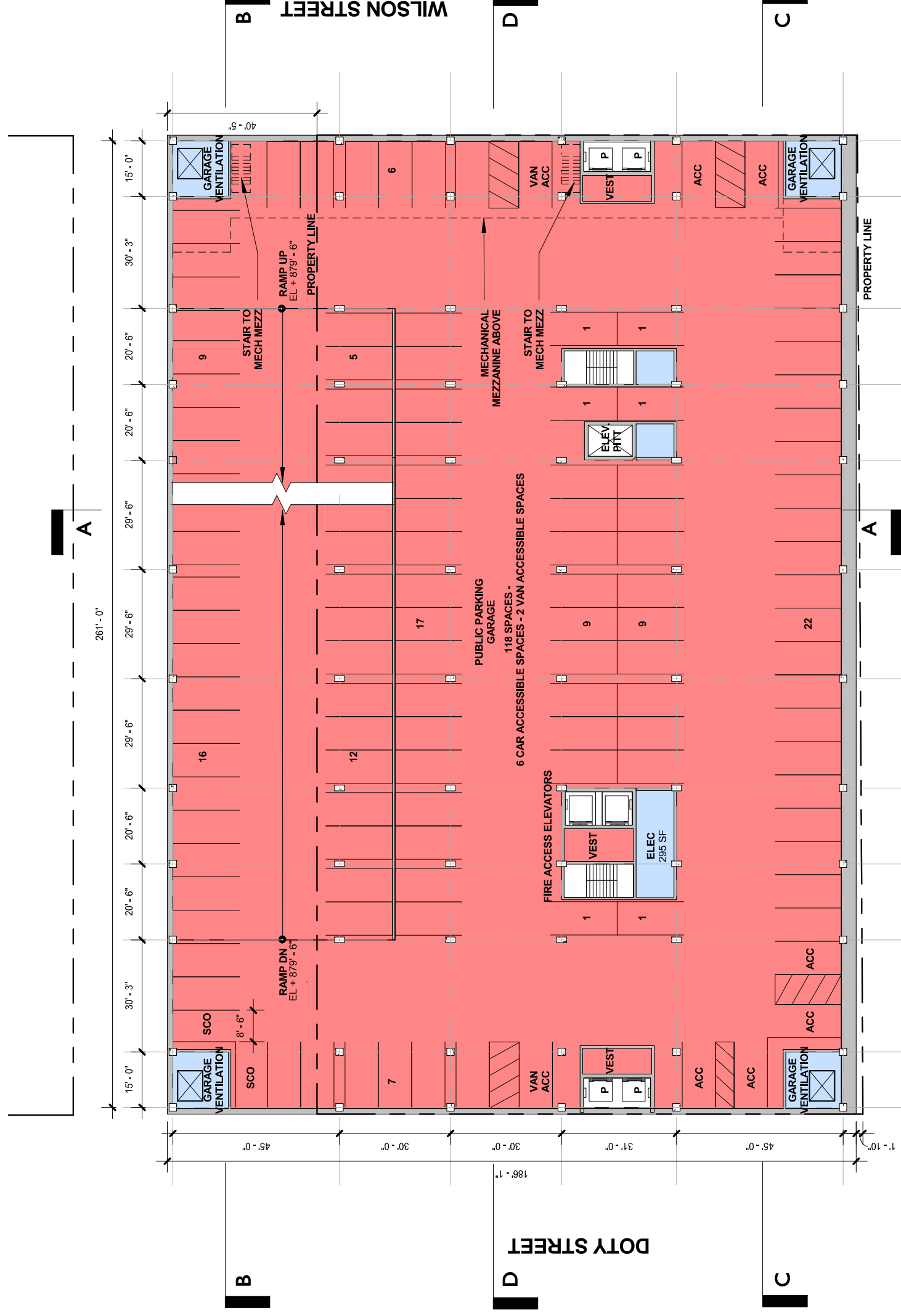
TOTAL GROSS SF: 49,250 SF

- APARTMENTS
- RETAIL
- SERVICE
- APARTMENT PARKING
- PUBLIC PARKING
- GREEN ROOF



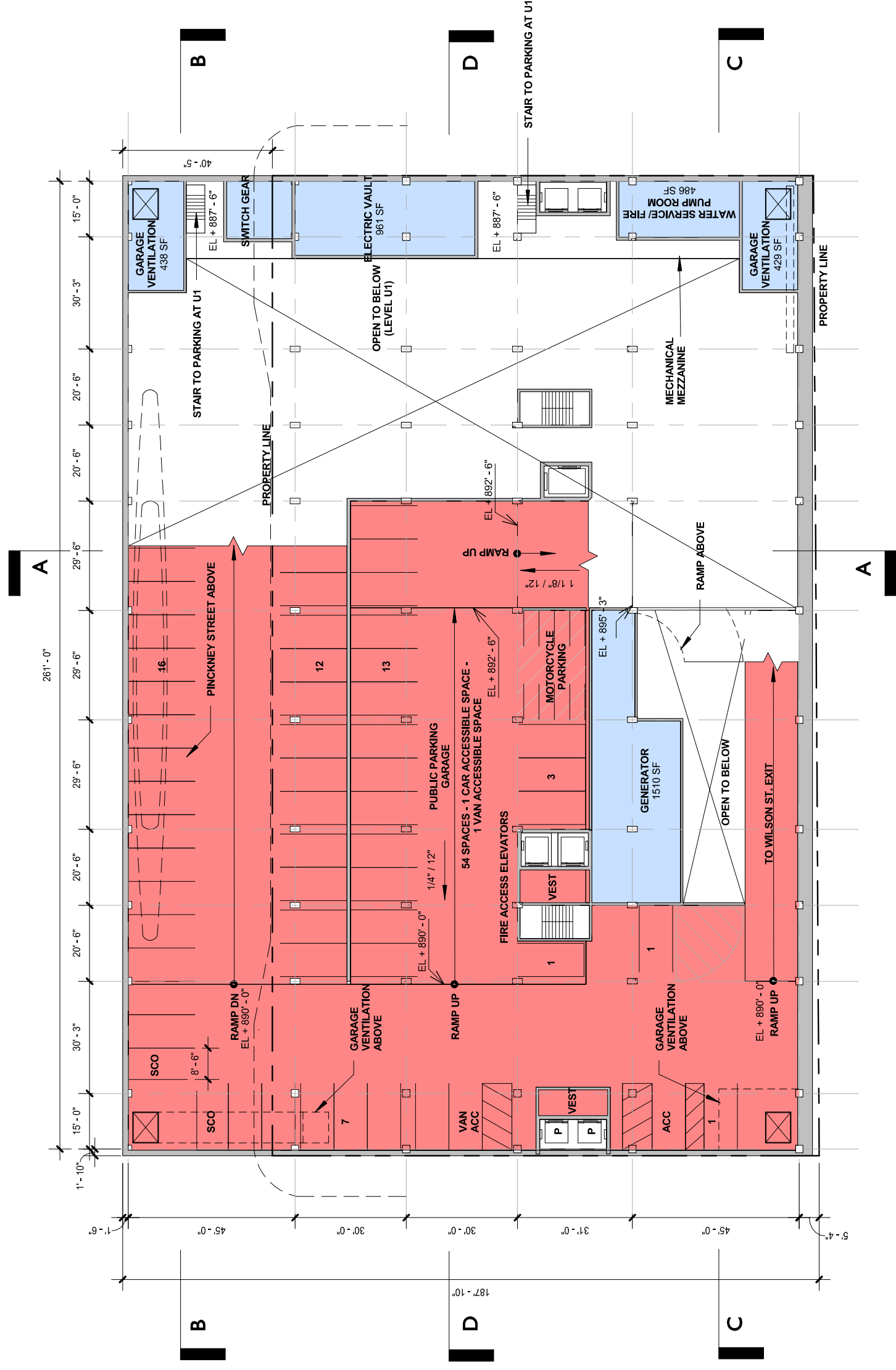
TOTAL GROSS SF: 49,250 SF

- APARTMENTS
- RETAIL
- SERVICE
- APARTMENT PARKING
- PUBLIC PARKING
- GREEN ROOF



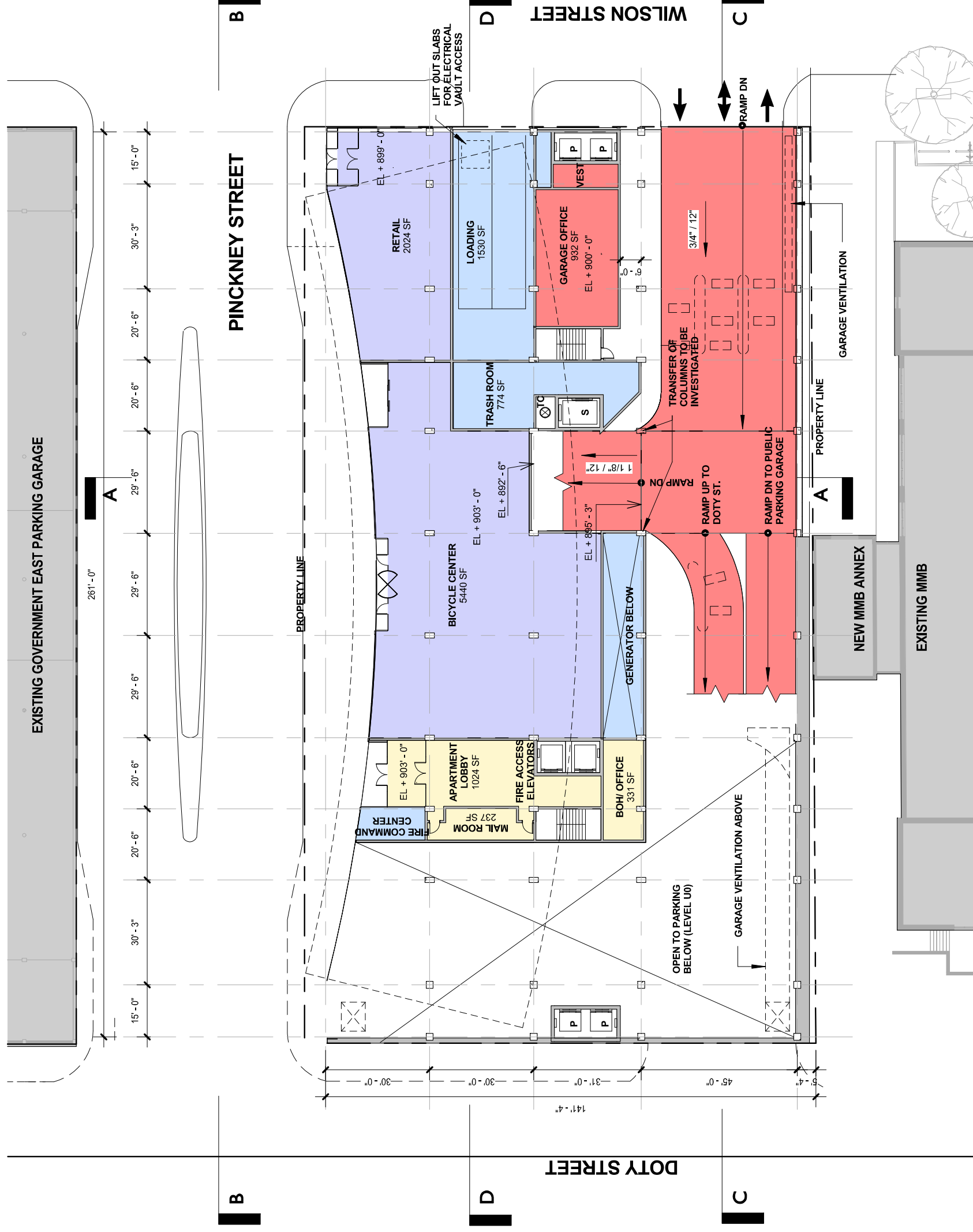
TOTAL GROSS SF: 49,250 SF

- APARTMENTS
- RETAIL
- SERVICE
- APARTMENT PARKING
- PUBLIC PARKING
- GREEN ROOF



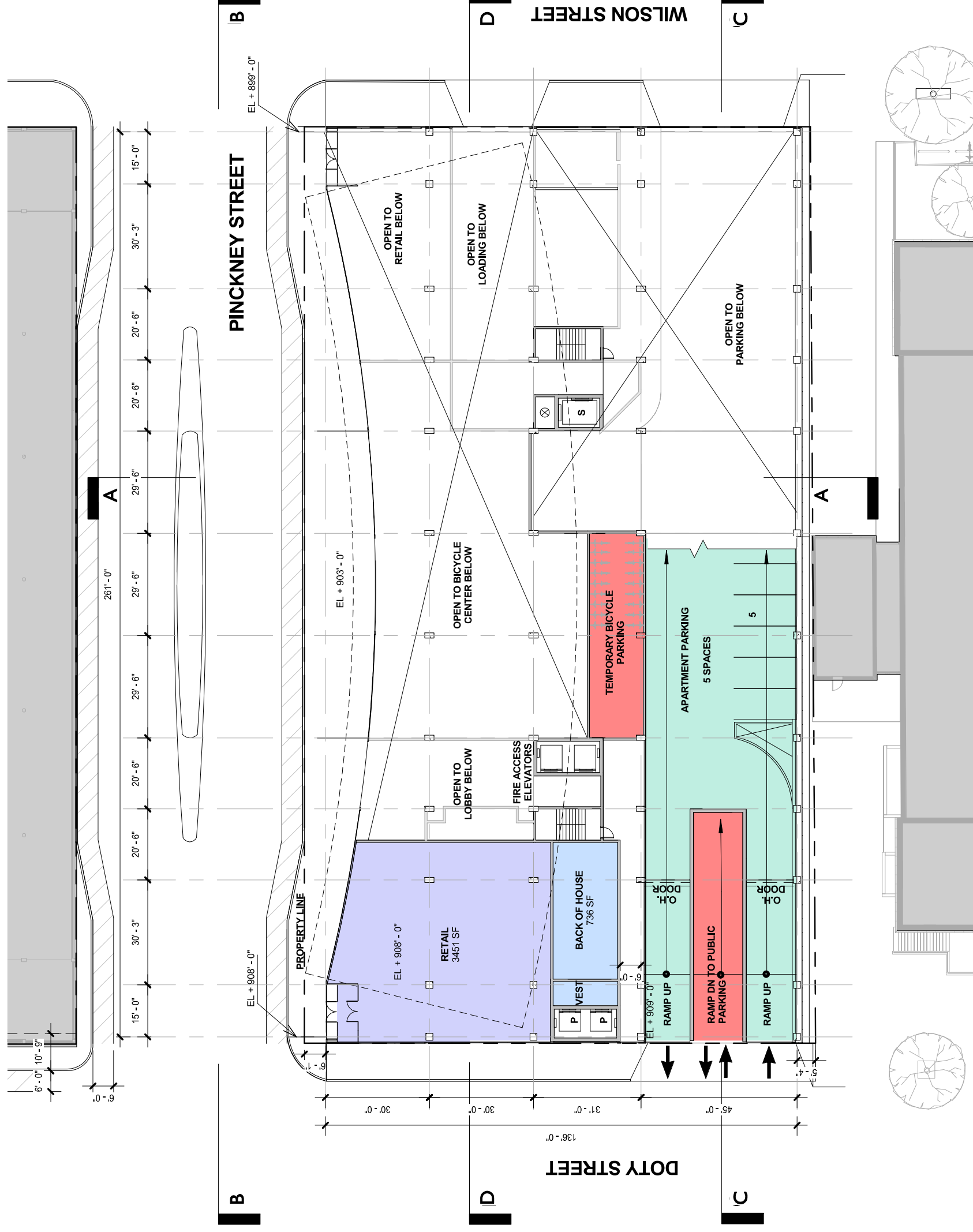
TOTAL GROSS SF: 32,915 SF

- APARTMENTS
- RETAIL
- SERVICE
- APARTMENT PARKING
- PUBLIC PARKING
- GREEN ROOF



TOTAL GROSS SF: 21,975 SF

- APARTMENTS
- RETAIL
- SERVICE
- APARTMENT PARKING
- PUBLIC PARKING
- GREEN ROOF



TOTAL GROSS SF: 13,455 SF