

BOARD OF PUBLIC WORKS

CITY OF MADISON – DANE COUNTY MEN'S HOMELESS SHELTER

1904 BARTILLON DRIVE
MADISON, WI
November, 20, 2023



DIMENSION 
Madison Design Group
architecture · interior design · planning

Agenda

- ▶ Introduction/Background
- ▶ Site Overview
- ▶ Building Elevations
- ▶ Building Floorplans
- ▶ Sustainability Features
- ▶ Budget
- ▶ Schedule

Introduction - Actions To Date

April 2022

- Madison Common Council approved 1902 Bartillon Drive (*to be re-assigned to 1904 Bartillon Drive*) as site for a permanent shelter facility

Aug 2022

- Team led by Dimension IV-Madison selected to provide architectural and engineering design services.

Oct 2022

- City RFQ process used to select Porchlight, Inc. to operate shelter.
- Multi-agency design team begins community engagement on design and services (Trauma-Informed Design Assessment)

Introduction - Community Partnerships



Catalyst for Change → housing-focused case management services, direct street outreach referrals, Comprehensive Community Services (CCS)



Nurse Disrupted → on-demand telehealth services, kiosk equipment and maintenance



Madison Street Medicine → on-site physical health care, follow-up care, direct street outreach referrals



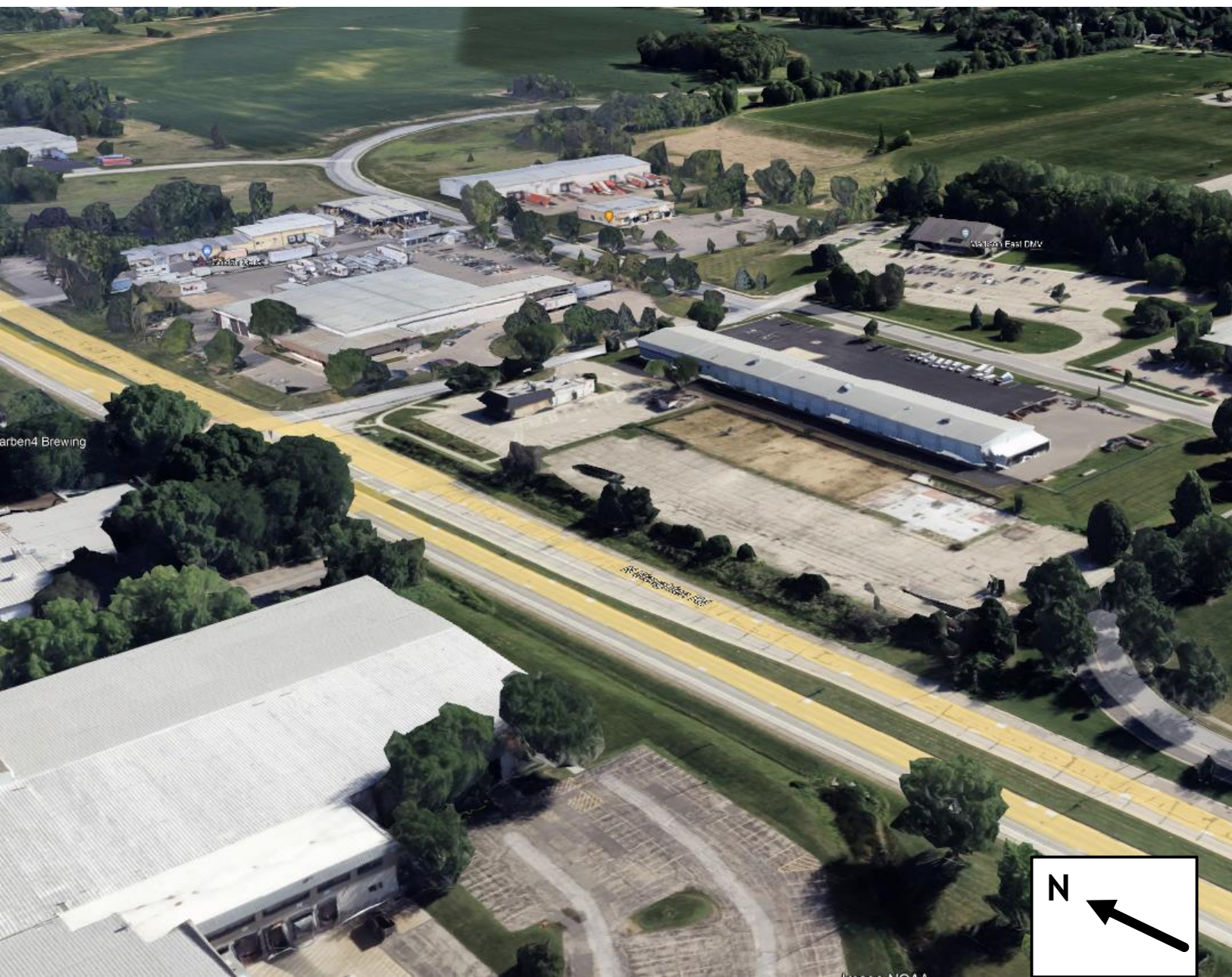
Kabba Recovery Services → on-site recovery groups, counseling, on-call crisis intervention services, staff training



PROJECTION LOCATION: 1904 BARTILLON DRIVE



SITE 3D VIEW



View from N Stoughton Rd. SW



View from N Stoughton Rd. NW





FROM UDC INITIAL APPROVAL 11/8/23

RENDERING – VIEW FROM BARTILLON



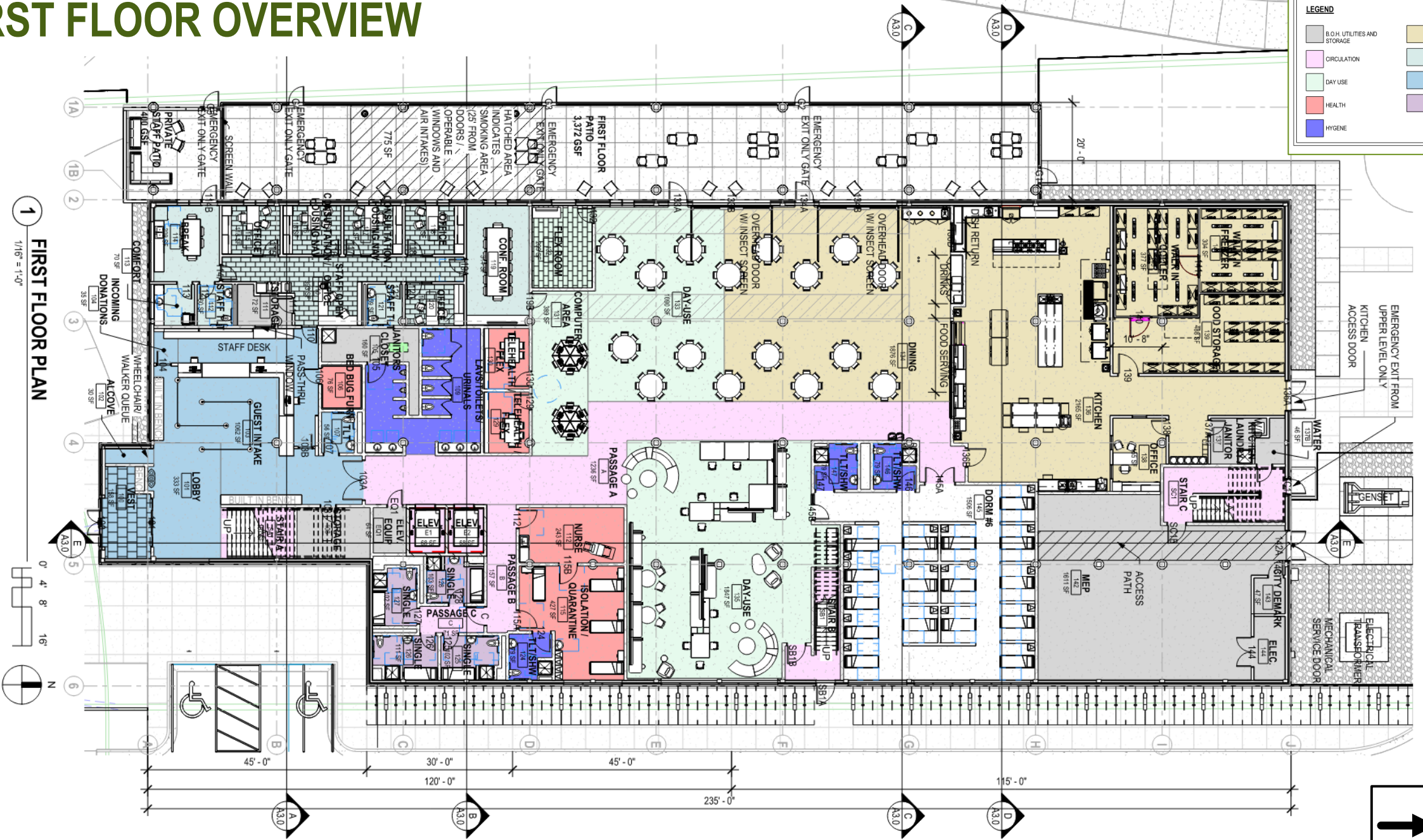


FROM UDC INITIAL APPROVAL 11/8/23

RENDERING – VIEW FROM STOUGHTON



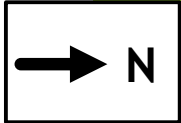
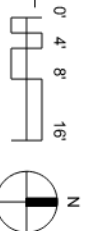
FIRST FLOOR OVERVIEW



LEGEND

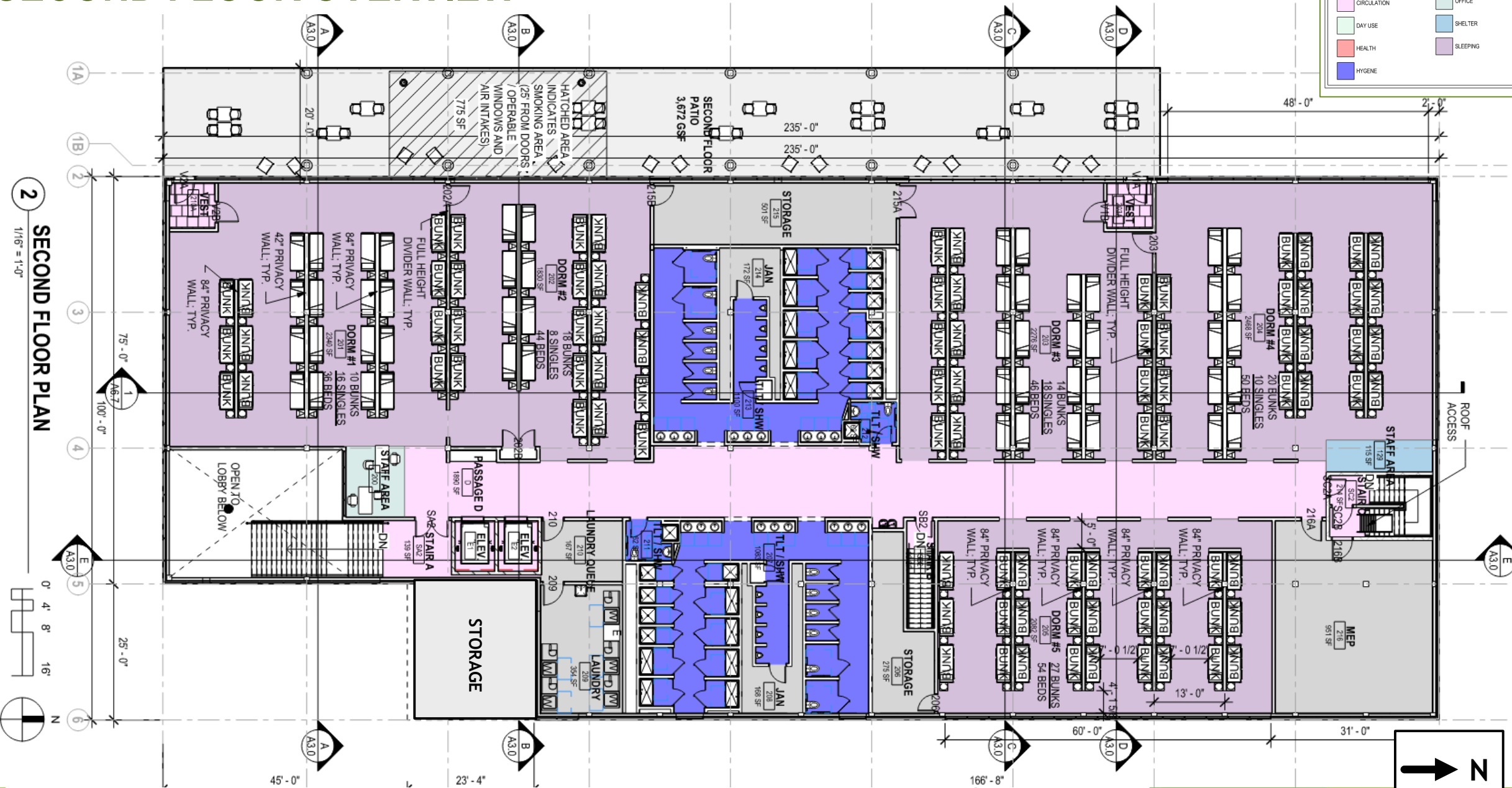
[Grey Box]	B.O.H UTILITIES AND STORAGE	[Yellow Box]	NUTRITION
[Pink Box]	CIRCULATION	[Light Blue Box]	OFFICE
[Light Green Box]	DAY USE	[Blue Box]	SHELTER
[Red Box]	HEALTH	[Purple Box]	SLEEPING
[Blue Box]	HYGIENE		

1
FIRST FLOOR PLAN
1/16" = 1'-0"



SECOND FLOOR OVERVIEW

LEGEND			
	B.O.H. UTILITIES AND STORAGE		NUTRITION
	CIRCULATION		OFFICE
	DAY USE		SHELTER
	HEALTH		SLEEPING
	HYGIENE		



2 SECOND FLOOR PLAN
1/16" = 1'-0"

SUSTAINABILITY FEATURES

- ▶ LEEDv4 New Construction Silver (or higher) certification
- ▶ High Performance Building Envelope to Reduce Heating/Cooling needs
- ▶ Mass Timber structural framing system
- ▶ LED Lighting and Lighting Controls
- ▶ Geothermal HVAC System
- ▶ Radiant Floor Heating
- ▶ Enhanced Indoor Air Quality
- ▶ Extensive Solar PV System on the Roof (200 kW)
- ▶ Rainwater collection for toilet/urinal flushing
- ▶ Low Maintenance and Native Landscaping
- ▶ Ample Bike Parking, access to City's Bike Path Network
- ▶ Access to Local Bus Stop near site and ½ mile to Rapid Transit Stop
- ▶ EV Charging for Staff (or guests)

PROJECT BUDGET SUMMARY

- ▶ Total Project Budget of \$25M

- ▶ City Sources (\$14.5M):

- ▶ \$8M City Capital Budget (2021-2024)
 - ▶ \$1M General Land Acquisition Fund (2022)
 - ▶ \$2M City Administered ARPA Funding (2022)
 - ▶ \$2M Congressional Earmark (2023)
 - ▶ \$500k City Energy Improvements (2024)
 - ▶ \$1M Inflation Reduction Act (2024)

- ▶ County Sources:

- ▶ \$10.5M (2021-2023)

- ▶ Previously Encumbered: ~\$2.5M

- ▶ Land, A/E, Development Costs, Staff Time

- ▶ Construction: ~\$22.5M

- ▶ Bid: \$19.4M
 - ▶ 8%: \$1.5M
 - ▶ FFE: \$1.4M
 - ▶ Staff (CA): \$100k
 - ▶ Percent for Art: \$85k

PROJECT SCHEDULE

