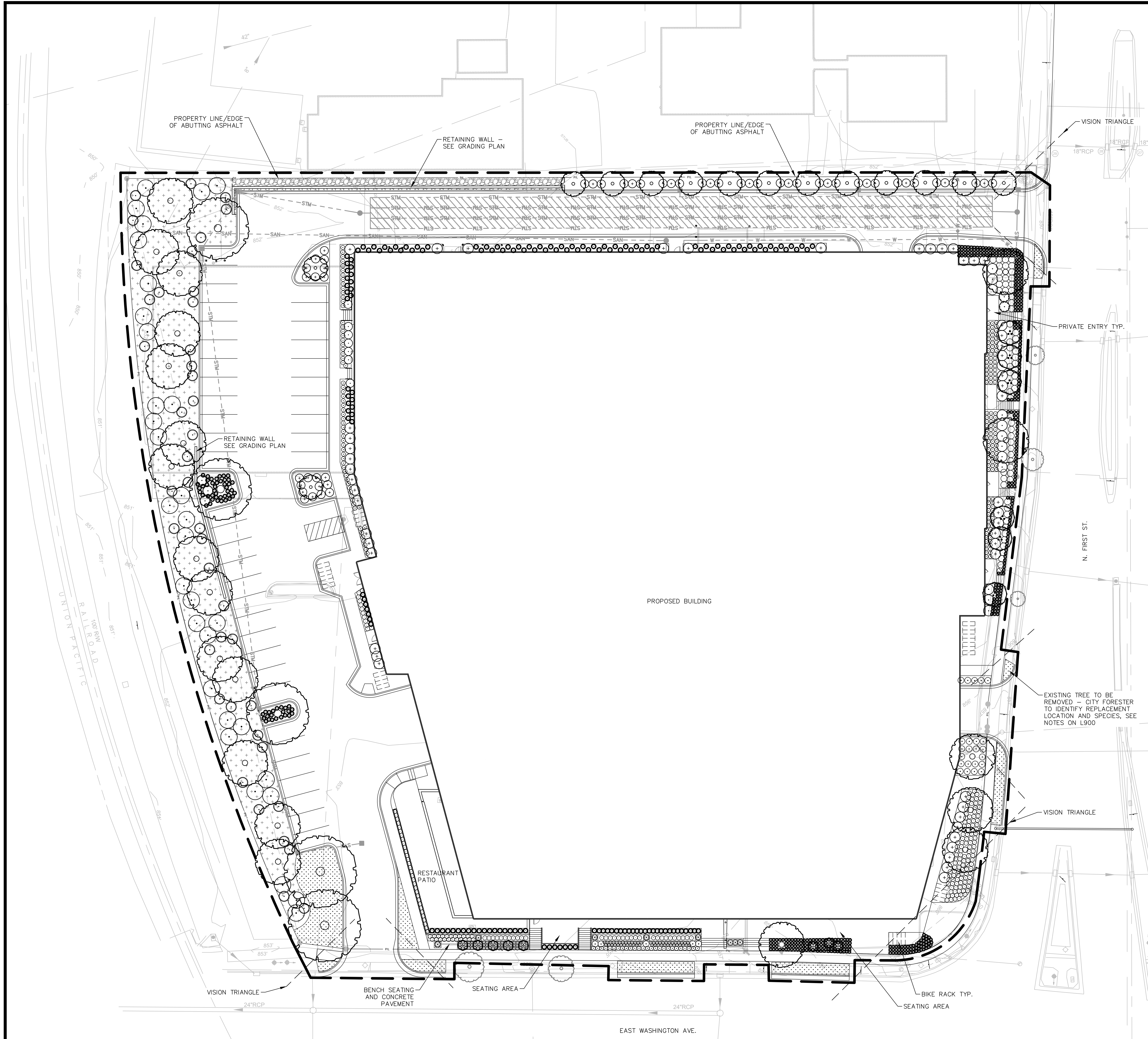


X:\MID\2021\2021\0075\Design\Sheet\001\_00\_100\_Landscape Plan\_0075 7/8/2021 3:29 PM



### PLANT SCHEDULE

CODE	QTY	BOTANICAL NAME	COMMON NAME
<b>ORNAMENTAL TREES</b>			
AME OBE	8	<i>Ametanther alvifolia</i> 'Obelisk' TM	Standing Ovation Serviceberry
AME ROH	6	<i>Ametanther x grandiflora</i> 'Robin Hill'	Robin Hill Apple Serviceberry
MAL RJE	2	<i>Malus</i> 'Red Jewel'	Red Jewel Crabapple
<b>SHADE TREES</b>			
BET NDH	18	<i>Betula nigra</i> 'Dura Heat'	Dura Heat River Birch
CEL OCH	3	<i>Celtis occidentalis</i> 'Chicagoland'	Chicagoland Hackberry
GIN BPS	12	<i>Ginkgo biloba</i> 'Princeton Sentry'	Princeton Sentry Ginkgo (male seedless)
GLE TSH	2	<i>Gleditsia triacanthos inermis</i> 'Shademaster'	Shademaster Honeylocust
ULM MOR	2	<i>Ulmus</i> 'Morton'	Accolade Elm
<b>DECIDUOUS SHRUBS</b>			
ARO MOR	45	<i>Aronia melanocarpa</i> 'Morton'	Ironqu Beauty Black Chokeberry
ARO MLS	90	<i>Aronia melanocarpa</i> 'UCONNAM165'	Low Shrub Mound Black Chokeberry
DIE LCO	23	<i>Diervilla lonicera</i> 'Copper'	Copper Low Bush Honeyuckle
HYD AWB	12	<i>Hydrangea arborescens</i> 'White Dome'	White Dome Hydrangea
RHU GLA	32	<i>Rhus glabra</i>	Smooth Sumac
SPI NBU	7	<i>Spiraea betulifolia</i> 'COURISPI01' TM	Pink Sparkler Birchleaf Spiraea
SPI BET	5	<i>Spiraea betulifolia</i> 'Tor'	Tor Birchleaf Spiraea
VIB AR2	2	<i>Viburnum dentatum</i> 'Christom' TM	Blue Muffin Arrowwood Viburnum
<b>EVERGREEN SHRUBS</b>			
JUN CIO	20	<i>Juniperus chinensis</i> 'Iowa'	Iowa Juniper
JUN CKA	53	<i>Juniperus chinensis</i> 'Kallays Compact'	Kallay Compact Pfitzer Juniper
PIN SLO	8	<i>Pinus mugo</i> 'Slowmound'	Mugo Pine
TAX MH1	7	<i>Taxus x media</i> 'Hicksii'	Hicks Yew
TAX MTA	23	<i>Taxus x media</i> 'Tauntonii'	Taunton's Yew
<b>ORNAMENTAL GRASSES &amp; SEDGES</b>			
CAL AKA	131	<i>Calamagrostis x acutiflora</i> 'Karl Foerster'	Karl Foerster Feather Reed Grass
CAR FBL	420	<i>Carex flacca</i> 'Blue Zinger'	Blue Zinger Sedge
PAN VSH	23	<i>Panicum virgatum</i> 'Shenandoah'	Shenandoah Switch Grass
SPO HTA	65	<i>Sporobolus heterolepis</i> 'Tara'	Tara Dwarf Prairie Dropseed
<b>PERENNIALS</b>			
ALL SUM	55	<i>Allium x</i> 'Summer Beauty'	Summer Beauty Ornamental Onion
CAL NPT	30	<i>Calamintha nepeta nepeta</i>	Lesser Calamint
GER HMA	115	<i>Geranium phaeum</i> 'Raven'	Raven Dusky Cranesbill
HOS GUA	64	<i>Hosta x</i> 'Guacamole'	Guacamole Hosta
LIR SPI	116	<i>Liriope spicata</i>	Creeping Lily Turf
MAT STR	125	<i>Mattuccio struthiopteris</i>	Ostrich Fern
SED ALJ	11	<i>Sedum x</i> 'Autumn Joy'	Autumn Joy Sedum

**E. Washington Ave. and N. First St. Mixed Use Development**

For all lots UNDER 5 acres and NOT zoned L or IG, five (5) landscape points shall be provided for each three hundred (300) square feet of developed area.

Total square footage of developed area: **45,717 square feet**  
 Total landscape points required: **762 points**

**Tabulation of Points and Credits**

Plant Type/Element	Minimum Size at Installation	Points	Credits/Existing Landscape		New/Proposed Landscape	
			Quantity	Points Achieved	Quantity	Points Achieved
Overstory deciduous tree	2 1/2" caliper measured at breast height	35			37	1295
Tall evergreen tree	5-6 feet tall	35			0	0
Ornamental tree	1 1/2 inch caliper	15			14	210
Upright evergreen shrub	3-4 feet tall	10			27	270
Shrub, deciduous	#3 gallon container size, Min. 12-24"	3			247	741
Shrub, evergreen	#3 gallon container size, Min. 12-24"	4			112	448
Ornamental grasses/perennials	#1 gallon container size, Min. 8-18"	2			1125	2250
Ornamentals/decorative fencing or wall	n/a	4 per 10 linear ft.			0	0
Existing significant specimen tree	Minimum size: 2 1/2 inch caliper *Trees must be within developed area and cannot comprise more than 30% of total points	\$4 per caliper inch, Max 200 points per tree			0	0
Landscape furniture for public seating	Furniture must be within developed area, publicly accessible, and cannot comprise more than 10% of total required points	5 points per "seat"			0	0
<b>Sub Totals</b>					0	5214

**Total Number of Points Provided: 5214**

**Landscape Points Distribution**

Landscape shall be distributed throughout the property along street frontages, within parking lot interiors, as foundation plantings, or as general site landscaping. The total number of landscape points provided shall be distributed on the property as follows.

**Total Developed Area** Required landscaped areas shall be calculated based upon the total developed area of the property. Developed area is defined as that area within a single contiguous boundary which is made up of structures, parking, driveways and docking/loading facilities, but excluding the area of any building footprints at grade, land designated for open space uses such as athletic fields, and undeveloped land area on the same zoning lot.

**Development Frontage Landscape** Landscaping an/or ornamental fencing shall be provided between buildings or parking areas and the adjacent street(s), except where buildings are placed at the sidewalk. Landscape material shall include a mix of plant materials.

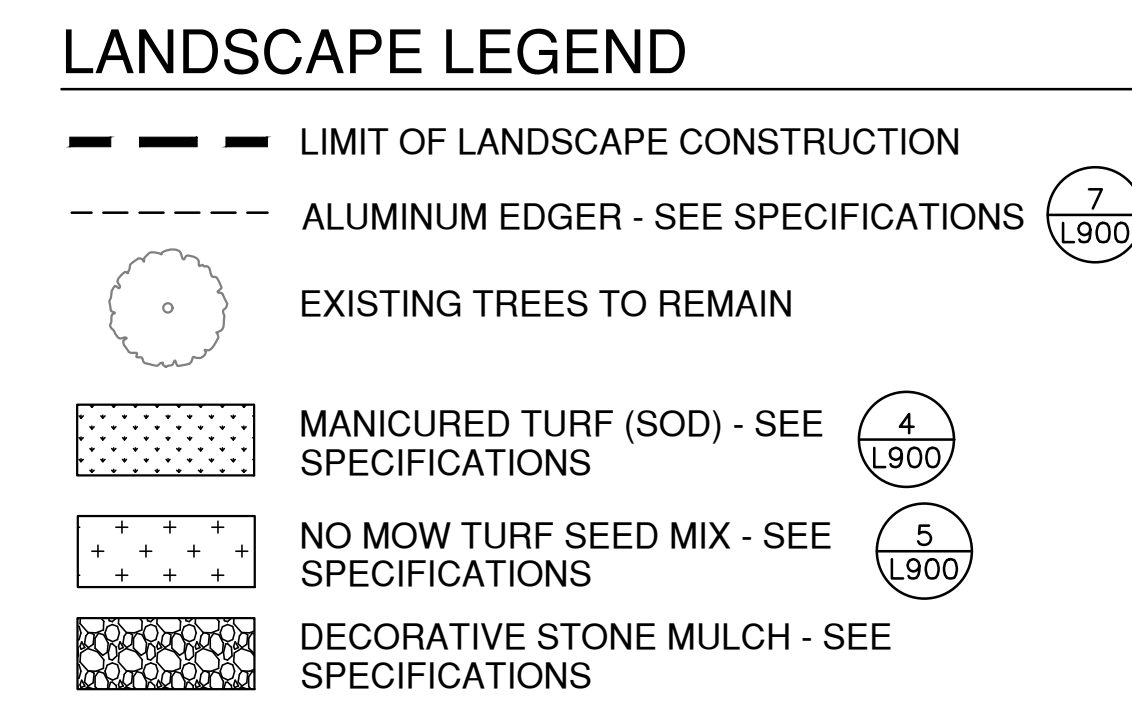
**Interior Parking Lot Landscaping** The purpose of interior parking lot landscaping is to improve the appearance of parking lots, provide shade, and improve stormwater infiltration. All parking lots with twenty (20) or more parking spaces shall be landscaped in accordance with the interior parking lot standards.

**Foundation Plantings** Foundation plantings shall be installed along building facades, except where building facades directly abut the sidewalk, plaza, or other hardscape features. Foundation plantings shall consist primarily of shrubs, perennials, and native grasses.

**Screening Along District Boundaries** Screening shall be provided along side and rear property boundaries between commercial, mixed use or industrial districts and residential districts.

**Screening of Other Site Elements** The following site elements shall be screened in compatibility with the design elements, materials and colors used elsewhere on the site: refuse disposal areas, outdoor storage areas, loading areas, and mechanical equipment.

\*For a more comprehensive look into the City of Madison Landscape Requirements, see Section 28.142 Madison General Ordinance\*



**NOTICE:** In accordance with Wisconsin statute 182.0175, damage to transmission facilities, excavator shall be solely responsible to provide advance notice to the designated "ONE CALL SYSTEM" not less than three working days prior to commencement of any excavation required to perform work contained on this drawing, and further, excavator shall comply with all other requirements of this statute relative to excavator's work.

**DISCLAIMER:** The underground utilities shown have been located from field survey information and existing drawings. GRAEF makes no guarantee that the underground utilities shown comprise all such utilities in the area, either in service or abandoned. GRAEF further does not warrant that the underground utilities shown are in the exact location indicated. GRAEF has not physically located the underground utilities.



JLA PROJECT NUMBER: 19-0802

**GRAEF**

1010 East Washington Avenue,  
 Suite 202  
 Madison, WI 53703-3130  
 608 / 242 1550

www.graef-usa.com

FIRST AND EAST WASHINGTON

LAND USE APPLICATION

**PROGRESS DOCUMENTS**

These documents reflect progress and intent and may be subject to change, including additional detail. These are not final construction documents and should not be used for final bidding or construction-related purposes.

DATE OF ISSUANCE: MAY 19, 2021

REVISION SCHEDULE		
Mark	Description	Date

SHEET TITLE: **LANDSCAPE PLAN**

SHEET NUMBER: **L100**





**JLA**  
ARCHITECTS

MADISON : MILWAUKEE  
jla-ap.com

JLA PROJECT NUMBER: 19-0802

FIRST AND EAST WASHINGTON

DESIGN DEVELOPMENT SET

**PROGRESS DOCUMENTS**

These documents reflect progress and intent and may be subject to change, including additional detail. These are not final construction documents and should not be used for final bidding or construction-related purposes.

DATE OF ISSUANCE JULY 7, 2021

REVISION SCHEDULE		
Mark	Description	Date

SHEET TITLE  
EAST WASHINGTON  
REVISED FRONTAGE  
DIAGRAM

SHEET NUMBER  
A708

