



Solutions for people, projects, and ecological resources.

March 15, 2021

Ruedebush Development & Construction
4605 Dovetail Drive
Madison, WI 53704

RE: 4800 Voges Road Tree Survey (Heartland Project #20200315)

Summary of Work

Heartland Ecological Group ("Heartland") performed a survey of trees present within a woodland on the 4800 Voges Road property on March 11-14, 2021. The 4800 Voges Road property contains an approximately 11.59-acre woodland and is located northeast of the intersection of U.S. Highway 51 and Voges Road, in Section 27, Township 7 North, Range 10 East, City of Madison, Dane County, Wisconsin (see Attachment 1: Project Location Map). The survey was requested for inclusion in plans for development of the parcel.

The tree survey was conducted by Scott Fuchs of Heartland. Each live tree encountered with a diameter at breast height ("DBH") of at least 6 inches was identified to the species level, its DBH measured, and its location recorded with a handheld Trimble GPS unit capable of sub-meter accuracy (see Attachment 2: Tree Survey Map). Nearly all green ash trees (*Fraxinus pennsylvanica*) observed throughout the woodland are afflicted with emerald ash borer and are either dying or already dead. Although not living, green ash individuals were recorded to demonstrate the extent of emerald ash borer damage throughout the woodland. A total of 1,132 trees with an average DBH of 12 inches were recorded (see Attachments 3 and 4: Tree Summary Table, List of Surveyed Trees). The locations of the recorded trees were then superimposed on aerial imagery of the 4800 Voges Road property and presented in a map figure.

Site History and Observations

Historic aerial imagery of the property was reviewed to assist in understanding its history. At the time of the 1937 aerial photograph, only about 50% of the present-day woodland was occupied by tree canopy, with its remaining portions likely grassland and/or savanna type habitat, potentially utilized as pasture for cattle (see Attachment 5: Historic Aerial Imagery). The review area appears to contain a relatively open oak woodland at this time. The trees visible are likely a combination of bur oak (*Quercus macrocarpa*) and shagbark hickory (*Carya ovata*), some of which remain to this day and were observed during the tree survey (old trees of ~150 years of age, ranging from 20-40 inch DBH). Since 1937, the woodland has filled in significantly with ash, cherry (*Prunus serotina*), box elder (*Acer negundo*), and elm (*Ulmus americana*) in the absence of fire and/or pasturing.

Heartland Ecological Group, Inc.
506 Springdale Street
Mount Horeb, WI 53572
608-490-2450
www.heartlandecological.com



Ruedeusch Development & Construction
4800 Voges Road Tree Survey
March 15, 2021

The woodland is currently dominated by cherry, shagbark hickory, bur oak, and box elder. Ash trees were previously co-dominant, but nearly all ash trees observed were dead or dying due to emerald ash borer. Additionally, about half of the bur oak trees observed appeared diseased, with large sections of missing bark and dead limbs present (see Attachment 6: Photolog). Hackberry (*Celtis occidentalis*), white oak (*Quercus alba*), red oak (*Quercus rubra*), quaking aspen (*Populus tremuloides*), and American elm (*Ulmus americana*) make up the majority of the sub-canopy of the woodland. The shrub layer is co-dominated by invasive buckthorn (*Rhamnus cathartica*), cherry, ash, and box elder. Overall, the woodland remains relatively open. Buckthorn shrub cover is homogenous throughout the woodland but has not become solely dominant. The tree survey was completed in March when little herbaceous vegetation is observable; however, populations of invasive garlic mustard (*Alliaria petiolata*) were observed throughout about half of the groundlayer of the woodland.

Please contact me if you have any questions regarding this tree survey.

Scott Fuchs
Environmental Scientist
Heartland Ecological Group
scott@heartlandecological.com
262-903-1156

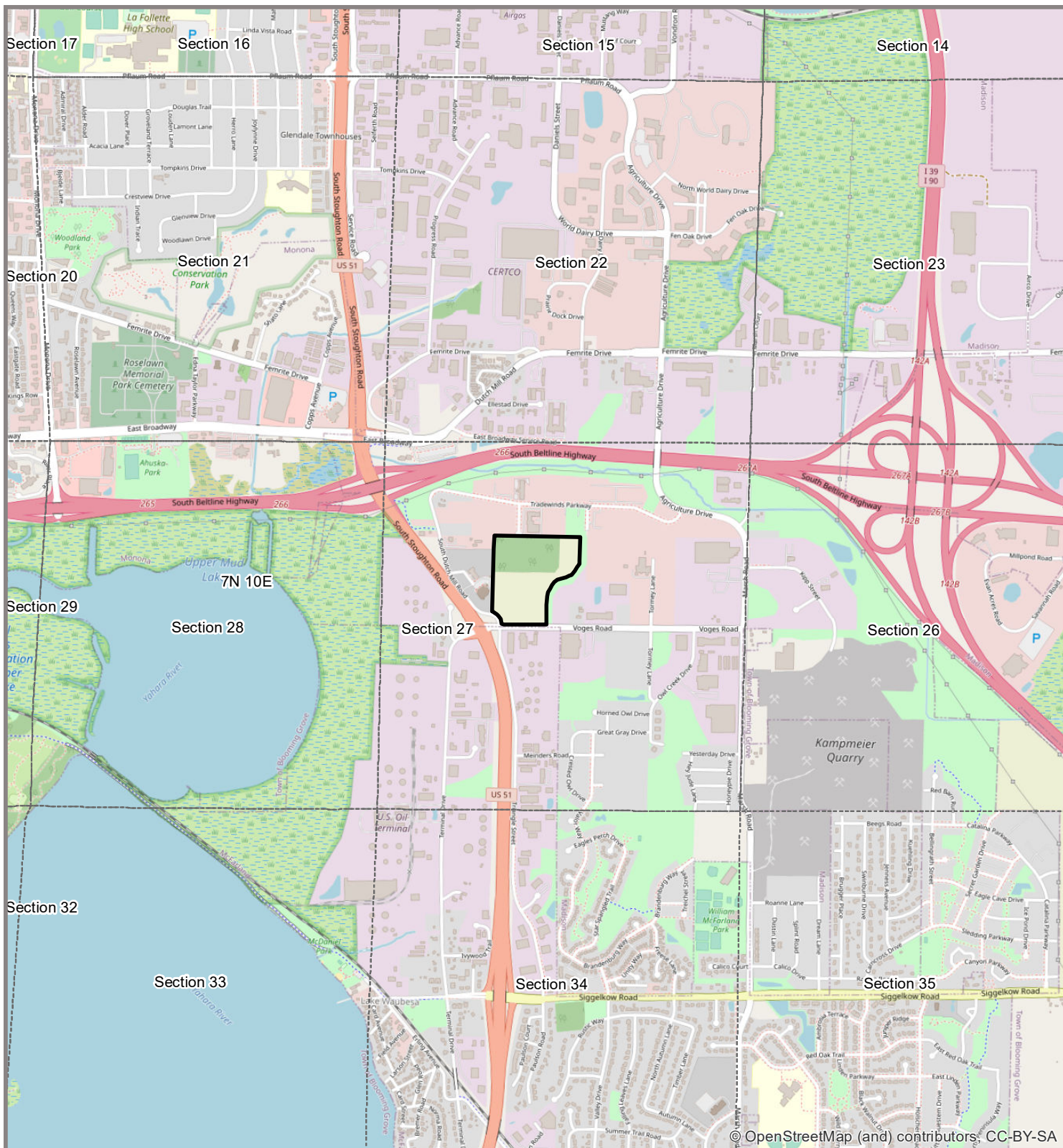
Attachments:

- Attachment 1: Project Location Map
- Attachment 2: Tree Survey Map
- Attachment 3: Tree Summary Table
- Attachment 4: List of Surveyed Trees
- Attachment 5: Historic Aerial Imagery
- Attachment 6: Photolog

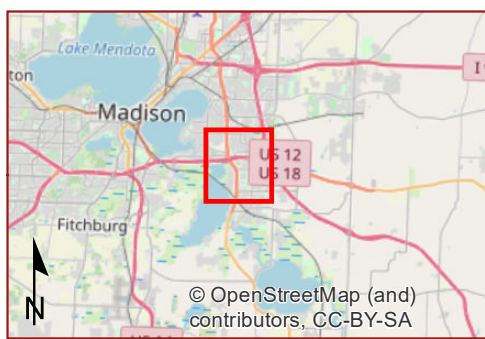





Ruedeusch Development & Construction
4800 Voges Road Tree Survey
March 15, 2021

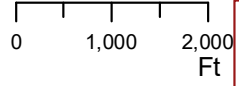
Attachment 1 | Project Location Map



© OpenStreetMap (and) contributors, CC-BY-SA



-  Study Area (29.11 ac)
-  Township
-  Section



Heartland
 ECOLOGICAL GROUP INC

Figure 1. Project Location
 4800 Voges Road
 Project #20200315
 T7N, R10E, S27
 C Madison, Dane Co, WI

OpenStreetMap
 Data: ESRI
 5/28/2020



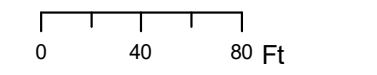
Ruedeusch Development & Construction
4800 Voges Road Tree Survey
March 15, 2021

Attachment 2 | Tree Survey Map



Tree Survey Study Area (11.59 ac)

● Tree Survey Points

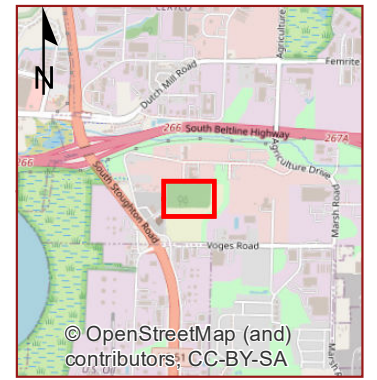
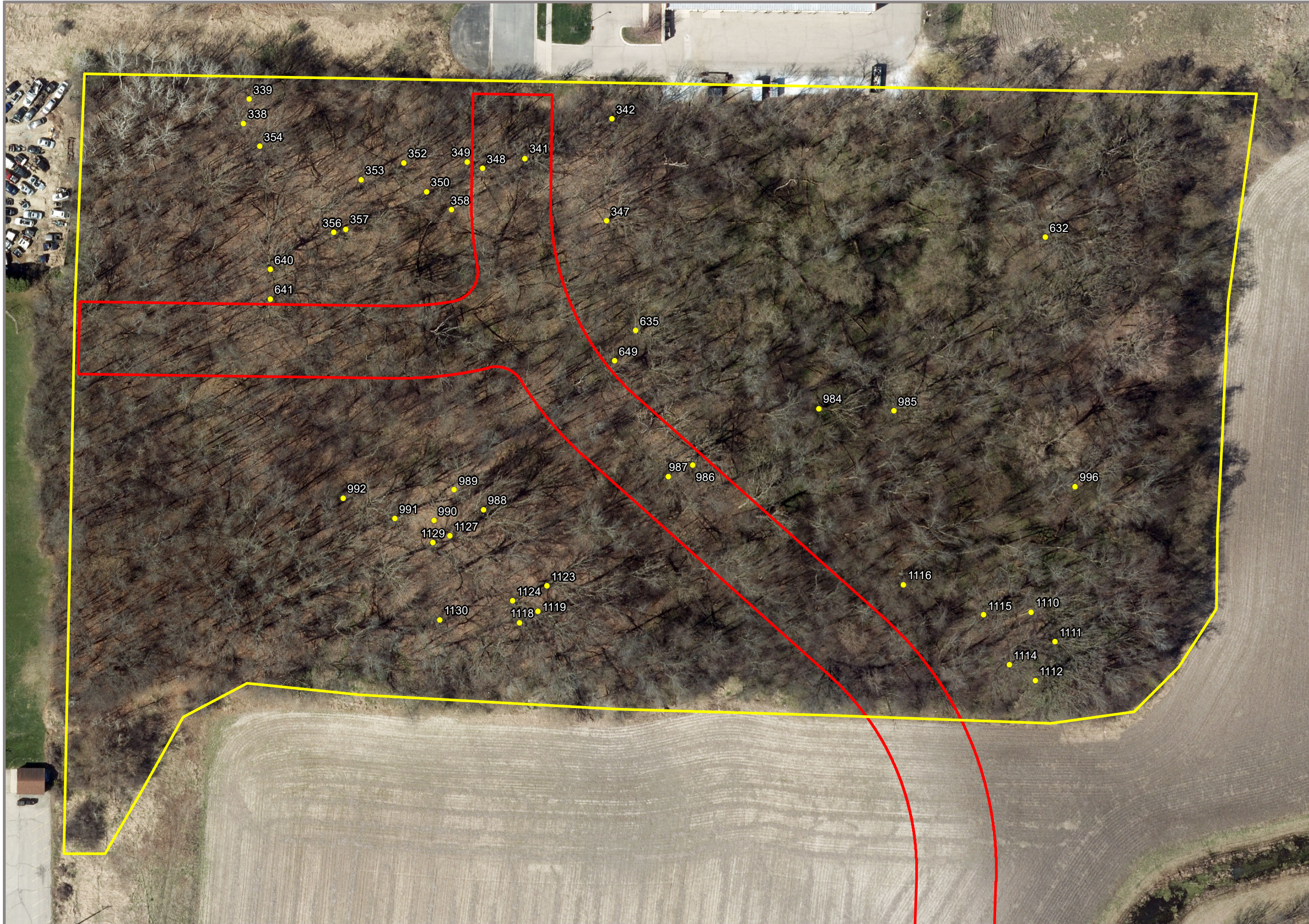


Heartland
 ECOLOGICAL GROUP INC

**Tree Survey Results
 Map Figure**

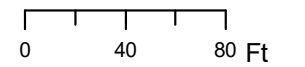
4800 Voges Road
 #20200315
 T7N, R10E, S27
 C Madison, Dane Co, WI

2020 Dane Co Ortho
 Data: HEG 3/16/2021



© OpenStreetMap (and contributors) CC-BY-SA

- Tree Survey Study Area (11.59 ac)
- Proposed Road Right of Ways
- Healthy Bur Oak 20+ Inch DBH



Heartland
ECOLOGICAL GROUP INC

Bur Oak Trees and Right-of-ways

4800 Voges Road
#20200315
T7N, R10E, S27
C Madison, Dane Co, WI

2020 Dane Co Ortho
Data: HEG 3/18/2021



Ruedeusch Development & Construction
4800 Voges Road Tree Survey
March 15, 2021

Attachment 3 | Tree Summary Table

4800 Voges Road Property Tree Summary
 March 2021 - City of Madison, WI



Tree Species	Common Name	Number of Trees	Average DBH	DBH Range
Acer negundo	box elder	144	11	6 - 30
Carya ovata	shagbark hickory	102	9	6 - 22
Celtis occidentalis	hackberry	23	10	6 - 18
Fraxius pennsylvanica	green ash	246	13	6 - 52
Populus deltoides	eastern cottonwood	4	26	12 - 31
Populus tremuloides	quaking aspen	22	11	6 - 19
Prunus serotina	black cherry	351	10	6 - 29
Quercus alba	white oak	40	12	6 - 40
Quercus ellipsoidalis	northern pin oak	10	18	6 - 33
Quercus macrocarpa	bur oak	69	25	7 - 48
Quercus rubra	northern red oak	31	13	7 - 24
Rhamnus cathartica	buckthorn	12	7	6 - 10
Ulmus americana	American elm	78	9	6 - 18
Total		1132	12	6 - 52



Ruedeusch Development & Construction
4800 Voges Road Tree Survey
March 15, 2021

Attachment 4 | List of Surveyed Trees

4800 Voges Road Property Tree Inventory
March 2021 - City of Madison, WI



Tree ID	Acronym	Scientific Name	Common Name	DBH (inches)	Stems	Health	X Coordinates	Y Coordinates
1	Pru ser	Prunus serotina	black cherry	13	1	Healthy	-89.30039029	43.04412844
2	Pru ser	Prunus serotina	black cherry	17	1	Healthy	-89.30041687	43.04416237
3	Rha cat	Rhamnus cathartica	buckthorn	10	4	Healthy	-89.30043259	43.04414835
4	Pru ser	Prunus serotina	black cherry	6	1	Healthy	-89.30037206	43.04411857
5	Pop del	Populus deltoides	eastern cottonwood	12	1	Healthy	-89.30032661	43.04415569
6	Pop tre	Populus tremuloides	quaking aspen	9	1	Healthy	-89.30034309	43.04414433
7	Pop tre	Populus tremuloides	quaking aspen	11	1	Healthy	-89.30026442	43.04411179
8	Pop tre	Populus tremuloides	quaking aspen	11	1	Healthy	-89.3002744	43.04415799
9	Pop tre	Populus tremuloides	quaking aspen	10	1	Healthy	-89.30022484	43.04415644
10	Pop tre	Populus tremuloides	quaking aspen	11	1	Healthy	-89.30023706	43.04413114
11	Pop tre	Populus tremuloides	quaking aspen	10	1	Healthy	-89.30018377	43.04412118
12	Pop tre	Populus tremuloides	quaking aspen	12	1	Healthy	-89.30018479	43.04418581
13	Pop tre	Populus tremuloides	quaking aspen	10	1	Healthy	-89.30013822	43.04418115
14	Ulm ame	Ulmus americana	American elm	8	1	Healthy	-89.30008777	43.04414441
15	Pop tre	Populus tremuloides	quaking aspen	13	1	Healthy	-89.30015043	43.04413529
16	Pop tre	Populus tremuloides	quaking aspen	12	1	Healthy	-89.30008909	43.04411391
17	Pop tre	Populus tremuloides	quaking aspen	10	1	Healthy	-89.30010224	43.04412197
18	Fra pen	Fraxinus pennsylvanica	green ash	10	1	Healthy	-89.29983782	43.04415166
19	Ace neg	Acer negundo	box elder	7	1	Healthy	-89.29980755	43.04407585
20	Que alb	Quercus alba	white oak	13	1	Healthy	-89.29967359	43.04414666
21	Car ova	Carya ovata	shagbark hickory	8	1	Healthy	-89.29962264	43.04412345
22	Fra pen	Fraxinus pennsylvanica	green ash	6	1	Healthy	-89.29947949	43.04413961
23	Fra pen	Fraxinus pennsylvanica	green ash	8	1	Healthy	-89.29946205	43.04413765
24	Ace neg	Acer negundo	box elder	9	1	Healthy	-89.29938635	43.04408479
25	Ace neg	Acer negundo	box elder	8	1	Healthy	-89.29937561	43.04407763
26	Pop tre	Populus tremuloides	quaking aspen	6	1	Healthy	-89.29936021	43.04409162
27	Car ova	Carya ovata	shagbark hickory	12	1	Healthy	-89.2993699	43.04410789
28	Fra pen	Fraxinus pennsylvanica	green ash	9	1	Poor	-89.29928896	43.04414895
29	Pru ser	Prunus serotina	black cherry	11	1	Healthy	-89.29928704	43.04407111
30	Fra pen	Fraxinus pennsylvanica	green ash	11	1	Poor	-89.29925981	43.04416886
31	Fra pen	Fraxinus pennsylvanica	green ash	12	1	Poor	-89.29922144	43.04414605
32	Ace neg	Acer negundo	box elder	9	1	Healthy	-89.2991959	43.04414577
33	Car ova	Carya ovata	shagbark hickory	6	1	Healthy	-89.29917161	43.04412521
34	Car ova	Carya ovata	shagbark hickory	6	1	Healthy	-89.29919636	43.04409543
35	Pru ser	Prunus serotina	black cherry	7	1	Healthy	-89.29923858	43.04405942
36	Ulm ame	Ulmus americana	American elm	11	1	Healthy	-89.29917702	43.04404425
37	Pru ser	Prunus serotina	black cherry	9	1	Healthy	-89.299159	43.04404388
38	Pru ser	Prunus serotina	black cherry	9	1	Healthy	-89.29911041	43.04405956
39	Fra pen	Fraxinus pennsylvanica	green ash	9	1	Poor	-89.29909338	43.04413304
40	Pru ser	Prunus serotina	black cherry	6	1	Healthy	-89.29899509	43.04403227
41	Pru ser	Prunus serotina	black cherry	12	1	Healthy	-89.29898585	43.04409104
42	Fra pen	Fraxinus pennsylvanica	green ash	11	1	Fair	-89.29896291	43.0440968
43	Car ova	Carya ovata	shagbark hickory	9	1	Healthy	-89.29893501	43.04414865
44	Car ova	Carya ovata	shagbark hickory	7	1	Healthy	-89.29887088	43.04415805
45	Fra pen	Fraxinus pennsylvanica	green ash	12	1	Poor	-89.29892483	43.0440824
46	Pru ser	Prunus serotina	black cherry	11	1	Healthy	-89.29894393	43.04406285
47	Ace neg	Acer negundo	box elder	12	1	Poor	-89.29884791	43.04405831
48	Pru ser	Prunus serotina	black cherry	6	1	Healthy	-89.29884656	43.04407157
49	Car ova	Carya ovata	shagbark hickory	8	1	Healthy	-89.29880538	43.04407225
50	Pru ser	Prunus serotina	black cherry	9	1	Healthy	-89.29880427	43.04404925
51	Pru ser	Prunus serotina	black cherry	6	1	Healthy	-89.29876703	43.04409327
52	Rha cat	Rhamnus cathartica	buckthorn	9	2	Healthy	-89.29878554	43.04413925
53	Car ova	Carya ovata	shagbark hickory	6	1	Healthy	-89.2987573	43.04413587
54	Pru ser	Prunus serotina	black cherry	7	1	Healthy	-89.29872775	43.04414685
55	Pru ser	Prunus serotina	black cherry	13	1	Healthy	-89.29871746	43.0440477
56	Pru ser	Prunus serotina	black cherry	10	1	Healthy	-89.29875503	43.04403776
57	Ulm ame	Ulmus americana	American elm	10	1	Healthy	-89.29868746	43.0440377
58	Ulm ame	Ulmus americana	American elm	8	1	Healthy	-89.29866917	43.04406351
59	Pru ser	Prunus serotina	black cherry	10	1	Healthy	-89.2986542	43.04406838
60	Pru ser	Prunus serotina	black cherry	10	1	Healthy	-89.29863708	43.04409811
61	Ace neg	Acer negundo	box elder	18	2	Healthy	-89.29861098	43.04411982
62	Ace neg	Acer negundo	box elder	6	1	Healthy	-89.29857949	43.04405738
63	Pru ser	Prunus serotina	black cherry	7	1	Healthy	-89.29857641	43.04409756
64	Pru ser	Prunus serotina	black cherry	13	1	Healthy	-89.29856162	43.04407151
65	Cel occ	Celtis occidentalis	hackberry	18	1	Healthy	-89.29854648	43.04404902
66	Fra pen	Fraxinus pennsylvanica	green ash	14	1	Poor	-89.29850291	43.04415794
67	Rha cat	Rhamnus cathartica	buckthorn	6	1	Healthy	-89.29849755	43.04408886
68	Ace neg	Acer negundo	box elder	8	1	Healthy	-89.29849041	43.04408406
69	Car ova	Carya ovata	shagbark hickory	6	1	Healthy	-89.29847255	43.04408993
70	Fra pen	Fraxinus pennsylvanica	green ash	11	1	Poor	-89.29841253	43.04415958
71	Que alb	Quercus alba	white oak	7	1	Healthy	-89.29840484	43.04416545
72	Ace neg	Acer negundo	box elder	15	1	Healthy	-89.29836913	43.04405999
73	Ace neg	Acer negundo	box elder	12	1	Fair	-89.29833025	43.04401479
74	Ace neg	Acer negundo	box elder	10	1	Healthy	-89.29834219	43.04409616

75	Fra pen	Fraxinus pennsylvanica	green ash	14	1	Poor	-89.29833843	43.0441429
76	Fra pen	Fraxinus pennsylvanica	green ash	7	1	Poor	-89.29832314	43.04414624
77	Fra pen	Fraxinus pennsylvanica	green ash	10	1	Fair	-89.29825983	43.04412858
78	Ulm ame	Ulmus americana	American elm	7	1	Healthy	-89.29821517	43.04416295
79	Ace neg	Acer negundo	box elder	11	1	Healthy	-89.29816947	43.04413882
80	Fra pen	Fraxinus pennsylvanica	green ash	6	1	Poor	-89.29815337	43.04419254
81	Fra pen	Fraxinus pennsylvanica	green ash	9	1	Poor	-89.29815598	43.04414525
82	Ace neg	Acer negundo	box elder	10	1	Healthy	-89.29820859	43.04408966
83	Ace neg	Acer negundo	box elder	14	1	Healthy	-89.298186	43.04404218
84	Ace neg	Acer negundo	box elder	11	1	Healthy	-89.29813335	43.04410085
85	Ace neg	Acer negundo	box elder	9	1	Healthy	-89.29816606	43.04411915
86	Ace neg	Acer negundo	box elder	8	1	Healthy	-89.29809035	43.04414355
87	Ace neg	Acer negundo	box elder	7	1	Healthy	-89.29802797	43.04414169
88	Ace neg	Acer negundo	box elder	9	1	Poor	-89.2979801	43.04413543
89	Ace neg	Acer negundo	box elder	13	1	Healthy	-89.29799408	43.04411047
90	Ace neg	Acer negundo	box elder	7	1	Healthy	-89.29794615	43.04415042
91	Ace neg	Acer negundo	box elder	15	1	Healthy	-89.29795427	43.04413185
92	Ace neg	Acer negundo	box elder	13	1	Healthy	-89.29792122	43.04414999
93	Ace neg	Acer negundo	box elder	7	1	Healthy	-89.29791463	43.04416517
94	Ace neg	Acer negundo	box elder	6	1	Healthy	-89.29789031	43.04414976
95	Ulm ame	Ulmus americana	American elm	6	1	Healthy	-89.29794879	43.04406518
96	Fra pen	Fraxinus pennsylvanica	green ash	15	1	Poor	-89.29790173	43.04406476
97	Ace neg	Acer negundo	box elder	8	1	Healthy	-89.29801274	43.04404014
98	Fra pen	Fraxinus pennsylvanica	green ash	21	1	Poor	-89.29783741	43.04406899
99	Ulm ame	Ulmus americana	American elm	6	1	Healthy	-89.29781463	43.04408323
100	Ace neg	Acer negundo	box elder	10	1	Healthy	-89.29780273	43.0441249
101	Fra pen	Fraxinus pennsylvanica	green ash	23	3	Healthy	-89.29765069	43.0442103
102	Ace neg	Acer negundo	box elder	8	1	Healthy	-89.29764791	43.04419023
103	Ace neg	Acer negundo	box elder	10	1	Healthy	-89.29765906	43.04418538
104	Fra pen	Fraxinus pennsylvanica	green ash	9	1	Healthy	-89.29775354	43.0440793
105	Fra pen	Fraxinus pennsylvanica	green ash	21	1	Poor	-89.29773486	43.04405594
106	Ulm ame	Ulmus americana	American elm	8	1	Healthy	-89.29764247	43.04409361
107	Ulm ame	Ulmus americana	American elm	14	1	Healthy	-89.2976139	43.04415139
108	Ace neg	Acer negundo	box elder	10	1	Healthy	-89.29758612	43.04414983
109	Ace neg	Acer negundo	box elder	16	1	Healthy	-89.29760278	43.04418765
110	Ace neg	Acer negundo	box elder	11	1	Healthy	-89.29755283	43.04411903
111	Ace neg	Acer negundo	box elder	11	1	Healthy	-89.29747874	43.04420763
112	Fra pen	Fraxinus pennsylvanica	green ash	10	1	Healthy	-89.29744234	43.04408364
113	Ace neg	Acer negundo	box elder	10	1	Healthy	-89.29744899	43.04405294
114	Fra pen	Fraxinus pennsylvanica	green ash	18	2	Healthy	-89.29737368	43.04411451
115	Rha cat	Rhamnus cathartica	buckthorn	8	1	Healthy	-89.29740134	43.04411475
116	Ace neg	Acer negundo	box elder	11	1	Healthy	-89.29736671	43.04419779
117	Ace neg	Acer negundo	box elder	16	1	Healthy	-89.29721664	43.0441701
118	Rha cat	Rhamnus cathartica	buckthorn	6	1	Healthy	-89.29715755	43.04412434
119	Ace neg	Acer negundo	box elder	7	1	Healthy	-89.29715522	43.04411729
120	Pru ser	Prunus serotina	black cherry	7	1	Healthy	-89.29718428	43.04419468
121	Fra pen	Fraxinus pennsylvanica	green ash	14	1	Healthy	-89.29713269	43.04418434
122	Ace neg	Acer negundo	box elder	9	1	Healthy	-89.29708625	43.04416355
123	Ace neg	Acer negundo	box elder	19	2	Healthy	-89.2970988	43.04420031
124	Ace neg	Acer negundo	box elder	15	2	Healthy	-89.29704579	43.04416884
125	Ace neg	Acer negundo	box elder	30	3	Healthy	-89.29698635	43.04418943
126	Ace neg	Acer negundo	box elder	15	1	Healthy	-89.29711991	43.04409502
127	Pru ser	Prunus serotina	black cherry	9	1	Healthy	-89.29714724	43.04408694
128	Pru ser	Prunus serotina	black cherry	6	1	Healthy	-89.29720765	43.04404629
129	Ulm ame	Ulmus americana	American elm	6	1	Healthy	-89.29723404	43.04403955
130	Ulm ame	Ulmus americana	American elm	6	1	Healthy	-89.2972502	43.0440061
131	Ace neg	Acer negundo	box elder	10	1	Healthy	-89.29729503	43.04407855
132	Fra pen	Fraxinus pennsylvanica	green ash	10	1	Healthy	-89.29734836	43.04402441
133	Pru ser	Prunus serotina	black cherry	12	1	Healthy	-89.29733844	43.04402457
134	Ace neg	Acer negundo	box elder	9	1	Healthy	-89.29742041	43.04397174
135	Fra pen	Fraxinus pennsylvanica	green ash	13	1	Poor	-89.29733694	43.04399689
136	Pru ser	Prunus serotina	black cherry	21	1	Healthy	-89.2971645	43.04398869
137	Fra pen	Fraxinus pennsylvanica	green ash	30	1	Poor	-89.2974361	43.04395041
138	Ulm ame	Ulmus americana	American elm	9	1	Healthy	-89.29754267	43.04397442
139	Fra pen	Fraxinus pennsylvanica	green ash	24	1	Poor	-89.29760727	43.04394628
140	Ulm ame	Ulmus americana	American elm	9	1	Healthy	-89.29758755	43.04400835
141	Fra pen	Fraxinus pennsylvanica	green ash	13	1	Poor	-89.29756903	43.04405745
142	Ulm ame	Ulmus americana	American elm	9	1	Poor	-89.29753877	43.04407717
143	Fra pen	Fraxinus pennsylvanica	green ash	16	1	Fair	-89.29762603	43.04404515
144	Fra pen	Fraxinus pennsylvanica	green ash	16	1	Fair	-89.29765591	43.04400553
145	Ace neg	Acer negundo	box elder	9	1	Healthy	-89.29760507	43.04393769
146	Cel occ	Celtis occidentalis	hackberry	7	1	Healthy	-89.29769038	43.04390167
147	Ace neg	Acer negundo	box elder	17	1	Healthy	-89.29772621	43.04389781
148	Fra pen	Fraxinus pennsylvanica	green ash	16	1	Poor	-89.29773956	43.04389373
149	Fra pen	Fraxinus pennsylvanica	green ash	15	1	Poor	-89.29776488	43.04399545
150	Rha cat	Rhamnus cathartica	buckthorn	6	1	Healthy	-89.29779993	43.04402747
151	Fra pen	Fraxinus pennsylvanica	green ash	13	1	Poor	-89.29782613	43.04400532
152	Cel occ	Celtis occidentalis	hackberry	11	1	Healthy	-89.29788157	43.04401351
153	Ulm ame	Ulmus americana	American elm	7	1	Healthy	-89.29790854	43.04399773

154	Fra pen	Fraxinus pennsylvanica	green ash	12	1	Fair	-89.29796866	43.04398656
155	Ace neg	Acer negundo	box elder	11	1	Healthy	-89.29800214	43.0439279
156	Ace neg	Acer negundo	box elder	11	1	Healthy	-89.2979583	43.0439058
157	Ace neg	Acer negundo	box elder	13	1	Healthy	-89.29808511	43.04389595
158	Ace neg	Acer negundo	box elder	7	1	Healthy	-89.29806449	43.04399711
159	Ace neg	Acer negundo	box elder	16	1	Healthy	-89.29811984	43.04400605
160	Ace neg	Acer negundo	box elder	16	1	Healthy	-89.29815284	43.04404996
161	Pru ser	Prunus serotina	black cherry	7	1	Healthy	-89.29815206	43.04401438
162	Ace neg	Acer negundo	box elder	13	1	Healthy	-89.29812433	43.04398043
163	Ace neg	Acer negundo	box elder	15	1	Healthy	-89.29841034	43.04390345
164	Ace neg	Acer negundo	box elder	10	1	Healthy	-89.29846258	43.0440458
165	Cel occ	Celtis occidentalis	hackberry	17	1	Healthy	-89.29845978	43.04401296
166	Pru ser	Prunus serotina	black cherry	18	1	Healthy	-89.29861198	43.04398912
167	Ace neg	Acer negundo	box elder	7	1	Healthy	-89.29861244	43.04394259
168	Que alb	Quercus alba	white oak	18	1	Healthy	-89.29865274	43.0439177
169	Pru ser	Prunus serotina	black cherry	12	1	Healthy	-89.29872836	43.04396542
170	Pru ser	Prunus serotina	black cherry	8	1	Healthy	-89.29871612	43.04399539
171	Ulm ame	Ulmus americana	American elm	9	1	Healthy	-89.29878619	43.04398512
172	Pru ser	Prunus serotina	black cherry	8	1	Healthy	-89.29880162	43.04402613
173	Que alb	Quercus alba	white oak	24	1	Healthy	-89.2988272	43.04399455
174	Pru ser	Prunus serotina	black cherry	8	1	Healthy	-89.29886922	43.04401659
175	Ulm ame	Ulmus americana	American elm	6	1	Healthy	-89.29892018	43.04398431
176	Fra pen	Fraxinus pennsylvanica	green ash	6	1	Poor	-89.29894645	43.04401672
177	Que alb	Quercus alba	white oak	23	1	Healthy	-89.29888496	43.04393643
178	Pru ser	Prunus serotina	black cherry	10	1	Healthy	-89.29893085	43.04390337
179	Pru ser	Prunus serotina	black cherry	7	1	Healthy	-89.29877292	43.04393902
180	Pru ser	Prunus serotina	black cherry	9	1	Healthy	-89.29877908	43.04391336
181	Fra pen	Fraxinus pennsylvanica	green ash	13	1	Poor	-89.29876389	43.04387959
182	Pru ser	Prunus serotina	black cherry	8	1	Healthy	-89.29873454	43.04388877
183	Ulm ame	Ulmus americana	American elm	7	1	Healthy	-89.2987109	43.04390844
184	Pru ser	Prunus serotina	black cherry	18	1	Healthy	-89.29886986	43.04387671
185	Ulm ame	Ulmus americana	American elm	7	1	Healthy	-89.29904302	43.04394378
186	Pru ser	Prunus serotina	black cherry	12	1	Healthy	-89.29900439	43.04390635
187	Ulm ame	Ulmus americana	American elm	9	1	Healthy	-89.29917657	43.04397047
188	Pru ser	Prunus serotina	black cherry	11	1	Healthy	-89.29917623	43.04397996
189	Pru ser	Prunus serotina	black cherry	9	1	Healthy	-89.29917665	43.04404068
190	Pru ser	Prunus serotina	black cherry	8	1	Healthy	-89.2992992	43.04403022
191	Ulm ame	Ulmus americana	American elm	8	1	Healthy	-89.29927951	43.04401152
192	Pru ser	Prunus serotina	black cherry	6	1	Healthy	-89.29928829	43.04398885
193	Ulm ame	Ulmus americana	American elm	8	1	Healthy	-89.29937487	43.04402645
194	Pru ser	Prunus serotina	black cherry	10	1	Healthy	-89.29943497	43.04404006
195	Pru ser	Prunus serotina	black cherry	15	1	Healthy	-89.2994742	43.04404086
196	Que alb	Quercus alba	white oak	17	1	Healthy	-89.29947841	43.04400546
197	Ulm ame	Ulmus americana	American elm	6	1	Healthy	-89.29947793	43.04399549
198	Pru ser	Prunus serotina	black cherry	9	1	Healthy	-89.29942016	43.0439669
199	Que alb	Quercus alba	white oak	19	1	Healthy	-89.29942423	43.04392861
200	Pru ser	Prunus serotina	black cherry	7	1	Healthy	-89.29959	43.04394658
201	Pru ser	Prunus serotina	black cherry	8	1	Healthy	-89.2995809	43.04395015
202	Ulm ame	Ulmus americana	American elm	11	1	Healthy	-89.2996215	43.04401703
203	Pru ser	Prunus serotina	black cherry	7	1	Healthy	-89.29960885	43.04401489
204	Pru ser	Prunus serotina	black cherry	12	1	Fair	-89.29964324	43.04403133
205	Pru ser	Prunus serotina	black cherry	6	1	Healthy	-89.29965425	43.04402007
206	Ulm ame	Ulmus americana	American elm	7	1	Healthy	-89.29968559	43.04392916
207	Ulm ame	Ulmus americana	American elm	7	1	Healthy	-89.29973008	43.04397562
208	Pru ser	Prunus serotina	black cherry	14	1	Healthy	-89.29973803	43.04403709
209	Pru ser	Prunus serotina	black cherry	7	1	Healthy	-89.2997672	43.04404135
210	Ulm ame	Ulmus americana	American elm	6	1	Healthy	-89.29980541	43.04404711
211	Ulm ame	Ulmus americana	American elm	8	1	Healthy	-89.29981711	43.0440156
212	Ulm ame	Ulmus americana	American elm	9	1	Healthy	-89.2998894	43.0440591
213	Pru ser	Prunus serotina	black cherry	7	1	Healthy	-89.29997375	43.04400623
214	Pru ser	Prunus serotina	black cherry	8	1	Healthy	-89.29999746	43.04402407
215	Pru ser	Prunus serotina	black cherry	7	1	Healthy	-89.30000952	43.04401098
216	Pru ser	Prunus serotina	black cherry	10	1	Healthy	-89.29987085	43.04398466
217	Pru ser	Prunus serotina	black cherry	12	1	Healthy	-89.299848	43.0439608
218	Pru ser	Prunus serotina	black cherry	9	1	Healthy	-89.29980309	43.04398816
219	Ulm ame	Ulmus americana	American elm	8	1	Healthy	-89.29979762	43.04393491
220	Pru ser	Prunus serotina	black cherry	10	1	Healthy	-89.29983637	43.04394484
221	Pru ser	Prunus serotina	black cherry	10	1	Healthy	-89.29991636	43.04396163
222	Ulm ame	Ulmus americana	American elm	6	1	Healthy	-89.2999548	43.0439726
223	Pru ser	Prunus serotina	black cherry	6	1	Healthy	-89.29997913	43.04399065
224	Pru ser	Prunus serotina	black cherry	7	1	Healthy	-89.2999953	43.04397597
225	Que alb	Quercus alba	white oak	26	1	Healthy	-89.30005921	43.04395792
226	Ulm ame	Ulmus americana	American elm	9	1	Healthy	-89.3000644	43.04398811
227	Pru ser	Prunus serotina	black cherry	9	1	Healthy	-89.30006228	43.04401473
228	Pru ser	Prunus serotina	black cherry	12	1	Healthy	-89.30009143	43.04399824
229	Rha cat	Rhamnus cathartica	buckthorn	9	1	Healthy	-89.30006913	43.04404553
230	Fra pen	Fraxinus pennsylvanica	green ash	7	1	Poor	-89.30013469	43.04400023
231	Rha cat	Rhamnus cathartica	buckthorn	6	1	Healthy	-89.30014614	43.04397693
232	Fra pen	Fraxinus pennsylvanica	green ash	10	1	Poor	-89.30019693	43.04401526

233	Pru ser	Prunus serotina	black cherry	6	1	Healthy	-89.30019106	43.04403451
234	Que alb	Quercus alba	white oak	7	1	Healthy	-89.30017599	43.04406916
235	Pru ser	Prunus serotina	black cherry	9	1	Healthy	-89.30025895	43.04408896
236	Fra pen	Fraxinus pennsylvanica	green ash	8	1	Poor	-89.30034275	43.04411099
237	Car ova	Carya ovata	shagbark hickory	6	1	Healthy	-89.30037482	43.04410162
238	Pop tre	Populus tremuloides	quaking aspen	12	1	Healthy	-89.30023911	43.04404967
239	Que alb	Quercus alba	white oak	6	1	Healthy	-89.30029485	43.04405686
240	Que rub	Quercus rubra	northern red oak	9	1	Healthy	-89.30032847	43.0440503
241	Pop tre	Populus tremuloides	quaking aspen	13	1	Healthy	-89.30034231	43.04406752
242	Pru ser	Prunus serotina	black cherry	9	1	Healthy	-89.30032646	43.04407067
243	Pop tre	Populus tremuloides	quaking aspen	13	1	Healthy	-89.30036268	43.04408907
244	Que alb	Quercus alba	white oak	7	1	Healthy	-89.30043488	43.04401204
245	Pop tre	Populus tremuloides	quaking aspen	10	1	Healthy	-89.30039158	43.04401295
246	Car ova	Carya ovata	shagbark hickory	10	1	Healthy	-89.30042624	43.04402891
247	Que alb	Quercus alba	white oak	6	1	Healthy	-89.30042334	43.04400147
248	Que alb	Quercus alba	white oak	7	1	Healthy	-89.30041315	43.0439986
249	Pop tre	Populus tremuloides	quaking aspen	9	1	Healthy	-89.30038895	43.04399878
250	Pop tre	Populus tremuloides	quaking aspen	11	1	Healthy	-89.30037509	43.04400051
251	Pru ser	Prunus serotina	black cherry	8	1	Healthy	-89.3003507	43.04398418
252	Pop tre	Populus tremuloides	quaking aspen	12	1	Healthy	-89.30032393	43.04399753
253	Pru ser	Prunus serotina	black cherry	6	1	Healthy	-89.30030024	43.04399432
254	Que ell	Quercus ellipsoidalis	northern pin oak	6	1	Healthy	-89.30031955	43.04399917
255	Pop tre	Populus tremuloides	quaking aspen	13	1	Healthy	-89.30027678	43.04401273
256	Fra pen	Fraxinus pennsylvanica	green ash	9	1	Poor	-89.30023485	43.04397394
257	Fra pen	Fraxinus pennsylvanica	green ash	8	1	Poor	-89.30023862	43.04397305
258	Pru ser	Prunus serotina	black cherry	11	1	Healthy	-89.30028443	43.04395215
259	Pru ser	Prunus serotina	black cherry	9	1	Healthy	-89.3002911	43.04394265
260	Pru ser	Prunus serotina	black cherry	13	1	Healthy	-89.3003258	43.04392926
261	Que ell	Quercus ellipsoidalis	northern pin oak	11	1	Healthy	-89.3004098	43.04395581
262	Pru ser	Prunus serotina	black cherry	9	1	Healthy	-89.30040115	43.04394598
263	Pru ser	Prunus serotina	black cherry	14	1	Healthy	-89.30041292	43.04397549
264	Que alb	Quercus alba	white oak	6	1	Healthy	-89.30036953	43.0438906
265	Que alb	Quercus alba	white oak	6	1	Healthy	-89.30030496	43.04386595
266	Fra pen	Fraxinus pennsylvanica	green ash	8	1	Poor	-89.30031478	43.04391249
267	Pru ser	Prunus serotina	black cherry	7	1	Healthy	-89.30021573	43.04392603
268	Car ova	Carya ovata	shagbark hickory	13	1	Healthy	-89.3001947	43.04383626
269	Pru ser	Prunus serotina	black cherry	17	1	Healthy	-89.30017021	43.04391519
270	Fra pen	Fraxinus pennsylvanica	green ash	6	1	Poor	-89.30010874	43.04393965
271	Pru ser	Prunus serotina	black cherry	6	1	Healthy	-89.30003621	43.04394166
272	Pru ser	Prunus serotina	black cherry	22	2	Healthy	-89.30004327	43.04389767
273	Pru ser	Prunus serotina	black cherry	7	1	Healthy	-89.29993201	43.04391916
274	Car ova	Carya ovata	shagbark hickory	6	1	Healthy	-89.29991419	43.04386276
275	Fra pen	Fraxinus pennsylvanica	green ash	9	1	Poor	-89.29989048	43.04384792
276	Pru ser	Prunus serotina	black cherry	8	1	Healthy	-89.2998405	43.04389747
277	Pru ser	Prunus serotina	black cherry	11	1	Healthy	-89.29972871	43.04384139
278	Que alb	Quercus alba	white oak	18	1	Fair	-89.29974268	43.04378777
279	Ulm ame	Ulmus americana	American elm	8	1	Healthy	-89.29964982	43.04380721
280	Pru ser	Prunus serotina	black cherry	13	1	Healthy	-89.29961556	43.04388985
281	Pru ser	Prunus serotina	black cherry	9	1	Healthy	-89.29964791	43.04389693
282	Pru ser	Prunus serotina	black cherry	7	1	Healthy	-89.29956405	43.04387715
283	Cel occ	Celtis occidentalis	hackberry	7	1	Healthy	-89.29952534	43.04387796
284	Ulm ame	Ulmus americana	American elm	9	1	Healthy	-89.2995326	43.04382662
285	Ulm ame	Ulmus americana	American elm	14	1	Healthy	-89.29960372	43.04377586
286	Ulm ame	Ulmus americana	American elm	10	1	Healthy	-89.29950896	43.04378348
287	Que rub	Quercus rubra	northern red oak	15	1	Healthy	-89.29943105	43.04377097
288	Que rub	Quercus rubra	northern red oak	9	1	Healthy	-89.29941799	43.04376682
289	Que rub	Quercus rubra	northern red oak	10	1	Healthy	-89.29940037	43.04375059
290	Que alb	Quercus alba	white oak	8	1	Healthy	-89.29938965	43.04375552
291	Pru ser	Prunus serotina	black cherry	12	1	Healthy	-89.29934099	43.04376141
292	Car ova	Carya ovata	shagbark hickory	10	1	Healthy	-89.29929109	43.04377526
293	Que rub	Quercus rubra	northern red oak	8	1	Healthy	-89.29927409	43.04380073
294	Car ova	Carya ovata	shagbark hickory	7	1	Healthy	-89.29924285	43.04382123
295	Pru ser	Prunus serotina	black cherry	12	1	Healthy	-89.29934109	43.04387889
296	Fra pen	Fraxinus pennsylvanica	green ash	7	1	Healthy	-89.29930702	43.04385963
297	Pru ser	Prunus serotina	black cherry	8	1	Healthy	-89.29918531	43.04396863
298	Fra pen	Fraxinus pennsylvanica	green ash	6	1	Poor	-89.29918013	43.04389063
299	Ace neg	Acer negundo	box elder	6	1	Healthy	-89.29913522	43.0438841
300	Que ell	Quercus ellipsoidalis	northern pin oak	33	1	Poor	-89.29917306	43.04383793
301	Pru ser	Prunus serotina	black cherry	6	1	Healthy	-89.29920522	43.04380583
302	Pru ser	Prunus serotina	black cherry	9	1	Healthy	-89.29921729	43.04379253
303	Fra pen	Fraxinus pennsylvanica	green ash	15	1	Fair	-89.29913964	43.04377177
304	Car ova	Carya ovata	shagbark hickory	6	1	Healthy	-89.29907971	43.04381128
305	Pru ser	Prunus serotina	black cherry	19	1	Healthy	-89.29909358	43.04376258
306	Car ova	Carya ovata	shagbark hickory	6	1	Healthy	-89.2990973	43.04376717
307	Ace neg	Acer negundo	box elder	6	1	Healthy	-89.29910233	43.04376007
308	Pru ser	Prunus serotina	black cherry	13	1	Healthy	-89.29905955	43.04373473
309	Pru ser	Prunus serotina	black cherry	9	1	Healthy	-89.29905353	43.04378517
310	Fra pen	Fraxinus pennsylvanica	green ash	23	1	Healthy	-89.29894656	43.04373903
311	Pru ser	Prunus serotina	black cherry	9	1	Healthy	-89.29888253	43.04379978

312	Cel occ	Celtis occidentalis	hackberry	13	1	Healthy	-89.29891103	43.04383394
313	Fra pen	Fraxinus pennsylvanica	green ash	8	1	Poor	-89.29885418	43.04383769
314	Pru ser	Prunus serotina	black cherry	8	1	Healthy	-89.29885575	43.04384859
315	Ulm ame	Ulmus americana	American elm	8	1	Healthy	-89.2988622	43.04385151
316	Ulm ame	Ulmus americana	American elm	8	1	Healthy	-89.29877984	43.0438508
317	Ace neg	Acer negundo	box elder	7	1	Healthy	-89.29867412	43.04379157
318	Cel occ	Celtis occidentalis	hackberry	17	1	Healthy	-89.29864828	43.04387191
319	Pru ser	Prunus serotina	black cherry	10	1	Healthy	-89.29861388	43.04386618
320	Fra pen	Fraxinus pennsylvanica	green ash	10	1	Poor	-89.29860303	43.04382301
321	Pru ser	Prunus serotina	black cherry	17	1	Poor	-89.29857123	43.04383321
322	Ace neg	Acer negundo	box elder	14	1	Poor	-89.2985484	43.04383609
323	Pru ser	Prunus serotina	black cherry	18	1	Healthy	-89.29846287	43.04387395
324	Ace neg	Acer negundo	box elder	11	1	Healthy	-89.29843785	43.04383688
325	Ace neg	Acer negundo	box elder	17	1	Healthy	-89.29833911	43.04382245
326	Fra pen	Fraxinus pennsylvanica	green ash	20	1	Healthy	-89.29825698	43.0437713
327	Ace neg	Acer negundo	box elder	12	1	Healthy	-89.29816917	43.04384544
328	Ace neg	Acer negundo	box elder	11	1	Healthy	-89.29825228	43.04385145
329	Fra pen	Fraxinus pennsylvanica	green ash	17	1	Healthy	-89.29814186	43.04383575
330	Fra pen	Fraxinus pennsylvanica	green ash	20	1	Healthy	-89.29811403	43.0438326
331	Ace neg	Acer negundo	box elder	14	1	Healthy	-89.29808586	43.04384139
332	Cel occ	Celtis occidentalis	hackberry	9	1	Healthy	-89.29804387	43.04381964
333	Fra pen	Fraxinus pennsylvanica	green ash	21	1	Poor	-89.29808447	43.04379122
334	Ace neg	Acer negundo	box elder	11	1	Healthy	-89.29793817	43.04383472
335	Ulm ame	Ulmus americana	American elm	9	1	Healthy	-89.29790091	43.04386628
336	Cel occ	Celtis occidentalis	hackberry	8	1	Poor	-89.29785965	43.04385096
337	Ace neg	Acer negundo	box elder	12	1	Healthy	-89.29780498	43.04378378
338	Que mac	Quercus macrocarpa	bur oak	25	1	Healthy	-89.29949762	43.04409863
339	Que mac	Quercus macrocarpa	bur oak	40	2	Healthy	-89.29993236	43.04415493
340	Que mac	Quercus macrocarpa	bur oak	12	1	Healthy	-89.2995544	43.04416863
341	Que mac	Quercus macrocarpa	bur oak	26	1	Healthy	-89.2990694	43.04403706
342	Que mac	Quercus macrocarpa	bur oak	23	1	Healthy	-89.29880221	43.04413215
343	Que mac	Quercus macrocarpa	bur oak	8	1	Healthy	-89.29879133	43.04418094
344	Que mac	Quercus macrocarpa	bur oak	8	1	Healthy	-89.29882278	43.0441826
345	Que mac	Quercus macrocarpa	bur oak	31	1	Fair	-89.29722578	43.0440579
346	Que mac	Quercus macrocarpa	bur oak	33	1	Poor	-89.29734178	43.04405465
347	Que mac	Quercus macrocarpa	bur oak	33	1	Healthy	-89.29881009	43.04389945
348	Que mac	Quercus macrocarpa	bur oak	21	1	Healthy	-89.29920069	43.04401061
349	Que mac	Quercus macrocarpa	bur oak	20	1	Healthy	-89.29924825	43.04402476
350	Que mac	Quercus macrocarpa	bur oak	22	1	Healthy	-89.29937313	43.04395507
351	Que mac	Quercus macrocarpa	bur oak	13	1	Healthy	-89.29935786	43.04400525
352	Que mac	Quercus macrocarpa	bur oak	22	1	Healthy	-89.29944565	43.04401861
353	Que mac	Quercus macrocarpa	bur oak	25	1	Healthy	-89.29957796	43.043977
354	Que mac	Quercus macrocarpa	bur oak	24	1	Healthy	-89.29989577	43.0440474
355	Que mac	Quercus macrocarpa	bur oak	28	1	Fair	-89.29971347	43.04391815
356	Que mac	Quercus macrocarpa	bur oak	22	1	Healthy	-89.29965844	43.04385542
357	Que mac	Quercus macrocarpa	bur oak	20	1	Healthy	-89.29962057	43.04386406
358	Que mac	Quercus macrocarpa	bur oak	24	1	Healthy	-89.29929323	43.04391472
359	Pru ser	Prunus serotina	black cherry	19	1	Healthy	-89.29796093	43.04363381
360	Ace neg	Acer negundo	box elder	7	1	Healthy	-89.29806919	43.04368146
361	Fra pen	Fraxinus pennsylvanica	green ash	12	1	Poor	-89.29817644	43.04365277
362	Fra pen	Fraxinus pennsylvanica	green ash	15	1	Poor	-89.29814028	43.04371065
363	Ace neg	Acer negundo	box elder	9	1	Poor	-89.29816788	43.04371683
364	Ace neg	Acer negundo	box elder	6	1	Poor	-89.29825796	43.04372433
365	Fra pen	Fraxinus pennsylvanica	green ash	8	1	Poor	-89.29816919	43.04379741
366	Pru ser	Prunus serotina	black cherry	12	1	Healthy	-89.29809626	43.04366948
367	Ace neg	Acer negundo	box elder	13	1	Healthy	-89.29787706	43.04366104
368	Que alb	Quercus alba	white oak	19	1	Poor	-89.29780627	43.04364579
369	Ace neg	Acer negundo	box elder	13	1	Healthy	-89.29779236	43.04370021
370	Ace neg	Acer negundo	box elder	15	1	Healthy	-89.29770584	43.04383521
371	Ace neg	Acer negundo	box elder	11	1	Healthy	-89.29761401	43.04380601
372	Ace neg	Acer negundo	box elder	12	1	Healthy	-89.29757726	43.04384745
373	Pru ser	Prunus serotina	black cherry	11	1	Healthy	-89.29750355	43.04379959
374	Fra pen	Fraxinus pennsylvanica	green ash	7	1	Poor	-89.29744456	43.0437842
375	Fra pen	Fraxinus pennsylvanica	green ash	14	1	Poor	-89.297396	43.04380102
376	Pru ser	Prunus serotina	black cherry	10	1	Healthy	-89.29742582	43.04386733
377	Ace neg	Acer negundo	box elder	6	1	Healthy	-89.29747645	43.0439083
378	Fra pen	Fraxinus pennsylvanica	green ash	10	1	Poor	-89.29737312	43.0438761
379	Pru ser	Prunus serotina	black cherry	6	1	Healthy	-89.29736959	43.04388721
380	Fra pen	Fraxinus pennsylvanica	green ash	12	1	Poor	-89.29735087	43.04389111
381	Fra pen	Fraxinus pennsylvanica	green ash	13	1	Poor	-89.2973588	43.0439332
382	Fra pen	Fraxinus pennsylvanica	green ash	8	1	Poor	-89.29739217	43.04393517
383	Pru ser	Prunus serotina	black cherry	8	1	Healthy	-89.29740443	43.04395119
384	Ulm ame	Ulmus americana	American elm	8	1	Healthy	-89.29732971	43.04388731
385	Car ova	Carya ovata	shagbark hickory	7	1	Healthy	-89.29726719	43.04386935
386	Fra pen	Fraxinus pennsylvanica	green ash	7	1	Poor	-89.29713806	43.04389643
387	Fra pen	Fraxinus pennsylvanica	green ash	15	1	Poor	-89.2970937	43.04381199
388	Pru ser	Prunus serotina	black cherry	14	1	Healthy	-89.29717391	43.0437463
389	Ulm ame	Ulmus americana	American elm	13	1	Healthy	-89.29719719	43.04372691
390	Fra pen	Fraxinus pennsylvanica	green ash	9	1	Poor	-89.29719015	43.0437626

391	Pru ser	Prunus serotina	black cherry	11	1	Healthy	-89.29726325	43.04377007
392	Ulm ame	Ulmus americana	American elm	10	1	Healthy	-89.29729774	43.04376731
393	Cel occ	Celtis occidentalis	hackberry	9	1	Healthy	-89.29733391	43.04381155
394	Ulm ame	Ulmus americana	American elm	14	1	Healthy	-89.29718035	43.0438247
395	Fra pen	Fraxinus pennsylvanica	green ash	9	1	Poor	-89.29718575	43.0438592
396	Fra pen	Fraxinus pennsylvanica	green ash	7	1	Poor	-89.29715203	43.04385535
397	Ulm ame	Ulmus americana	American elm	7	1	Healthy	-89.29722802	43.0438917
398	Pru ser	Prunus serotina	black cherry	10	1	Healthy	-89.29730174	43.04385068
399	Ulm ame	Ulmus americana	American elm	10	1	Healthy	-89.29726772	43.04369596
400	Pru ser	Prunus serotina	black cherry	16	1	Poor	-89.29724946	43.04368393
401	Que alb	Quercus alba	white oak	11	1	Poor	-89.29740229	43.04368965
402	Pru ser	Prunus serotina	black cherry	6	1	Poor	-89.29738827	43.04373255
403	Fra pen	Fraxinus pennsylvanica	green ash	6	1	Poor	-89.29741378	43.04372173
404	Fra pen	Fraxinus pennsylvanica	green ash	6	1	Poor	-89.29745296	43.04369552
405	Fra pen	Fraxinus pennsylvanica	green ash	8	1	Poor	-89.29741681	43.04370042
406	Que alb	Quercus alba	white oak	40	2	Poor	-89.29746306	43.04369955
407	Ace neg	Acer negundo	box elder	6	1	Healthy	-89.29746422	43.04371999
408	Fra pen	Fraxinus pennsylvanica	green ash	8	1	Poor	-89.29745042	43.04373424
409	Pru ser	Prunus serotina	black cherry	15	1	Healthy	-89.29752051	43.04374206
410	Pru ser	Prunus serotina	black cherry	6	1	Healthy	-89.29749409	43.04372978
411	Fra pen	Fraxinus pennsylvanica	green ash	6	1	Poor	-89.29750853	43.04371005
412	Fra pen	Fraxinus pennsylvanica	green ash	10	1	Poor	-89.29752934	43.04369381
413	Ace neg	Acer negundo	box elder	11	1	Healthy	-89.29755974	43.04361378
414	Fra pen	Fraxinus pennsylvanica	green ash	13	1	Healthy	-89.29752328	43.04363469
415	Que alb	Quercus alba	white oak	10	1	Healthy	-89.29766127	43.04361994
416	Ace neg	Acer negundo	box elder	12	1	Healthy	-89.29776432	43.04359797
417	Fra pen	Fraxinus pennsylvanica	green ash	19	1	Poor	-89.29778944	43.04359296
418	Ace neg	Acer negundo	box elder	11	1	Healthy	-89.29783533	43.04361705
419	Ace neg	Acer negundo	box elder	9	1	Healthy	-89.29785235	43.04362231
420	Pru ser	Prunus serotina	black cherry	6	1	Healthy	-89.29786766	43.04357138
421	Fra pen	Fraxinus pennsylvanica	green ash	8	1	Poor	-89.29794495	43.04355287
422	Fra pen	Fraxinus pennsylvanica	green ash	14	1	Poor	-89.29792844	43.04354294
423	Fra pen	Fraxinus pennsylvanica	green ash	24	1	Poor	-89.29808762	43.04362897
424	Ace neg	Acer negundo	box elder	10	1	Healthy	-89.29810334	43.04363758
425	Pru ser	Prunus serotina	black cherry	16	1	Healthy	-89.298186	43.04360646
426	Pru ser	Prunus serotina	black cherry	7	1	Healthy	-89.29820585	43.04358977
427	Ace neg	Acer negundo	box elder	16	1	Healthy	-89.29827997	43.04361238
428	Ace neg	Acer negundo	box elder	13	1	Healthy	-89.29833554	43.04359354
429	Ulm ame	Ulmus americana	American elm	10	1	Healthy	-89.2983098	43.04356452
430	Cel occ	Celtis occidentalis	hackberry	7	1	Healthy	-89.29832993	43.04354057
431	Fra pen	Fraxinus pennsylvanica	green ash	30	1	Poor	-89.29839665	43.04354714
432	Fra pen	Fraxinus pennsylvanica	green ash	18	1	Poor	-89.29847758	43.04355929
433	Ace neg	Acer negundo	box elder	20	1	Healthy	-89.29840551	43.043612
434	Cel occ	Celtis occidentalis	hackberry	7	1	Healthy	-89.29838161	43.04361544
435	Ace neg	Acer negundo	box elder	11	1	Healthy	-89.29841669	43.04373417
436	Car ova	Carya ovata	shagbark hickory	12	1	Healthy	-89.2985028	43.04373605
437	Pru ser	Prunus serotina	black cherry	17	1	Healthy	-89.29854179	43.0437634
438	Fra pen	Fraxinus pennsylvanica	green ash	11	1	Poor	-89.29865612	43.04376638
439	Pru ser	Prunus serotina	black cherry	12	1	Healthy	-89.29867574	43.04371918
440	Ace neg	Acer negundo	box elder	8	1	Healthy	-89.2986295	43.04369998
441	Pru ser	Prunus serotina	black cherry	12	1	Healthy	-89.29857206	43.04366752
442	Pru ser	Prunus serotina	black cherry	8	1	Healthy	-89.2986375	43.04369592
443	Pru ser	Prunus serotina	black cherry	9	1	Healthy	-89.29857338	43.04369223
444	Pru ser	Prunus serotina	black cherry	9	1	Healthy	-89.29860442	43.04367112
445	Fra pen	Fraxinus pennsylvanica	green ash	7	1	Poor	-89.2985612	43.0436298
446	Pru ser	Prunus serotina	black cherry	12	1	Healthy	-89.298552	43.04358708
447	Ace neg	Acer negundo	box elder	6	1	Healthy	-89.29857479	43.04358445
448	Pru ser	Prunus serotina	black cherry	13	1	Healthy	-89.2985529	43.04354647
449	Pru ser	Prunus serotina	black cherry	13	1	Healthy	-89.29864407	43.04360493
450	Fra pen	Fraxinus pennsylvanica	green ash	6	1	Poor	-89.29864457	43.04366976
451	Pru ser	Prunus serotina	black cherry	6	1	Healthy	-89.29863777	43.04362274
452	Pru ser	Prunus serotina	black cherry	6	1	Healthy	-89.29864866	43.04359681
453	Pru ser	Prunus serotina	black cherry	6	1	Healthy	-89.29868263	43.04357204
454	Cel occ	Celtis occidentalis	hackberry	6	1	Healthy	-89.2987186	43.0436103
455	Pru ser	Prunus serotina	black cherry	19	1	Healthy	-89.29880926	43.04373263
456	Pru ser	Prunus serotina	black cherry	12	1	Healthy	-89.29884215	43.04373141
457	Fra pen	Fraxinus pennsylvanica	green ash	6	1	Poor	-89.29883496	43.04372061
458	Pru ser	Prunus serotina	black cherry	12	1	Fair	-89.29878774	43.04366246
459	Car ova	Carya ovata	shagbark hickory	13	1	Healthy	-89.29884599	43.04366986
460	Car ova	Carya ovata	shagbark hickory	7	1	Healthy	-89.29884814	43.04364884
461	Pru ser	Prunus serotina	black cherry	8	1	Healthy	-89.29874941	43.04362484
462	Ulm ame	Ulmus americana	American elm	10	1	Healthy	-89.29883879	43.04364201
463	Fra pen	Fraxinus pennsylvanica	green ash	7	1	Poor	-89.29891179	43.0436642
464	Car ova	Carya ovata	shagbark hickory	12	1	Healthy	-89.29893612	43.04367407
465	Fra pen	Fraxinus pennsylvanica	green ash	12	1	Poor	-89.29899167	43.04365633
466	Pru ser	Prunus serotina	black cherry	13	1	Healthy	-89.29904201	43.04366328
467	Ulm ame	Ulmus americana	American elm	9	1	Healthy	-89.29905221	43.04368779
468	Fra pen	Fraxinus pennsylvanica	green ash	7	1	Poor	-89.29901505	43.04367567
469	Pru ser	Prunus serotina	black cherry	7	1	Healthy	-89.29903268	43.04370777

470	Pru ser	Prunus serotina	black cherry	9	1	Healthy	-89.29921808	43.04364475
471	Car ova	Carya ovata	shagbark hickory	7	1	Healthy	-89.29925926	43.0436128
472	Fra pen	Fraxinus pennsylvanica	green ash	13	1	Poor	-89.29929461	43.04358022
473	Pru ser	Prunus serotina	black cherry	11	1	Healthy	-89.29924315	43.04356472
474	Pru ser	Prunus serotina	black cherry	11	1	Healthy	-89.29925436	43.04354624
475	Pru ser	Prunus serotina	black cherry	10	1	Healthy	-89.29914493	43.04355542
476	Pru ser	Prunus serotina	black cherry	12	1	Healthy	-89.29910093	43.04355413
477	Ulm ame	Ulmus americana	American elm	9	1	Healthy	-89.29905588	43.04355282
478	Fra pen	Fraxinus pennsylvanica	green ash	8	1	Poor	-89.29904638	43.0436062
479	Fra pen	Fraxinus pennsylvanica	green ash	8	1	Poor	-89.29920099	43.043497
480	Fra pen	Fraxinus pennsylvanica	green ash	12	1	Poor	-89.2992409	43.04350946
481	Pru ser	Prunus serotina	black cherry	6	1	Healthy	-89.29923088	43.04349673
482	Pru ser	Prunus serotina	black cherry	12	1	Healthy	-89.29922183	43.04347209
483	Pru ser	Prunus serotina	black cherry	14	1	Healthy	-89.29931265	43.0434385
484	Pru ser	Prunus serotina	black cherry	12	1	Healthy	-89.2993881	43.04343683
485	Pru ser	Prunus serotina	black cherry	18	1	Healthy	-89.29949051	43.04351027
486	Car ova	Carya ovata	shagbark hickory	7	1	Healthy	-89.29951271	43.04351489
487	Pru ser	Prunus serotina	black cherry	6	1	Healthy	-89.29953412	43.04352854
488	Pru ser	Prunus serotina	black cherry	12	1	Healthy	-89.2995389	43.04357292
489	Car ova	Carya ovata	shagbark hickory	9	1	Healthy	-89.2993668	43.04357924
490	Car ova	Carya ovata	shagbark hickory	14	1	Healthy	-89.29937646	43.0436674
491	Pru ser	Prunus serotina	black cherry	12	1	Healthy	-89.29942568	43.04368572
492	Que rub	Quercus rubra	northern red oak	16	1	Healthy	-89.29948636	43.04365173
493	Pru ser	Prunus serotina	black cherry	9	1	Healthy	-89.29954357	43.04369002
494	Ulm ame	Ulmus americana	American elm	6	1	Healthy	-89.29954695	43.04371462
495	Pru ser	Prunus serotina	black cherry	11	1	Healthy	-89.29957535	43.04373434
496	Ulm ame	Ulmus americana	American elm	6	1	Healthy	-89.29962876	43.04370377
497	Ulm ame	Ulmus americana	American elm	7	1	Healthy	-89.29959927	43.04372559
498	Car ova	Carya ovata	shagbark hickory	13	1	Healthy	-89.29959483	43.04363552
499	Que rub	Quercus rubra	northern red oak	13	1	Healthy	-89.29961411	43.04362354
500	Pru ser	Prunus serotina	black cherry	9	1	Healthy	-89.29965549	43.04356677
501	Pru ser	Prunus serotina	black cherry	9	1	Healthy	-89.29963334	43.04353553
502	Fra pen	Fraxinus pennsylvanica	green ash	6	1	Poor	-89.29966685	43.04352245
503	Fra pen	Fraxinus pennsylvanica	green ash	6	1	Poor	-89.29965702	43.04353172
504	Fra pen	Fraxinus pennsylvanica	green ash	8	1	Poor	-89.29974108	43.04352253
505	Fra pen	Fraxinus pennsylvanica	green ash	8	1	Poor	-89.29976763	43.04358567
506	Fra pen	Fraxinus pennsylvanica	green ash	11	1	Poor	-89.29974622	43.0436118
507	Car ova	Carya ovata	shagbark hickory	10	1	Healthy	-89.29972137	43.04361319
508	Car ova	Carya ovata	shagbark hickory	6	1	Healthy	-89.29969931	43.04361517
509	Pru ser	Prunus serotina	black cherry	16	1	Healthy	-89.29970139	43.04359983
510	Pru ser	Prunus serotina	black cherry	10	1	Healthy	-89.29976047	43.04363107
511	Que alb	Quercus alba	white oak	7	1	Healthy	-89.29973032	43.04364991
512	Pru ser	Prunus serotina	black cherry	7	1	Healthy	-89.29971934	43.04375002
513	Pru ser	Prunus serotina	black cherry	8	1	Healthy	-89.29983181	43.04372387
514	Pru ser	Prunus serotina	black cherry	11	1	Healthy	-89.29985018	43.04373307
515	Pru ser	Prunus serotina	black cherry	8	1	Healthy	-89.29988982	43.04378062
516	Que rub	Quercus rubra	northern red oak	9	1	Healthy	-89.2999049	43.04373593
517	Pru ser	Prunus serotina	black cherry	11	1	Healthy	-89.29994048	43.0435846
518	Fra pen	Fraxinus pennsylvanica	green ash	8	1	Poor	-89.29986469	43.04357181
519	Rha cat	Rhamnus cathartica	buckthorn	7	1	Poor	-89.29981299	43.0435686
520	Pru ser	Prunus serotina	black cherry	12	1	Healthy	-89.29997973	43.0435757
521	Pru ser	Prunus serotina	black cherry	9	1	Healthy	-89.29996353	43.04363148
522	Pru ser	Prunus serotina	black cherry	9	1	Healthy	-89.29998703	43.04362976
523	Pru ser	Prunus serotina	black cherry	11	1	Healthy	-89.29994912	43.04364494
524	Que alb	Quercus alba	white oak	6	1	Healthy	-89.30003706	43.04364781
525	Car ova	Carya ovata	shagbark hickory	8	1	Healthy	-89.30004215	43.04362488
526	Pru ser	Prunus serotina	black cherry	10	1	Healthy	-89.30004413	43.04368564
527	Car ova	Carya ovata	shagbark hickory	11	1	Healthy	-89.30009926	43.04370006
528	Car ova	Carya ovata	shagbark hickory	11	1	Healthy	-89.30007472	43.04373076
529	Car ova	Carya ovata	shagbark hickory	10	1	Healthy	-89.30004961	43.043753
530	Car ova	Carya ovata	shagbark hickory	6	1	Healthy	-89.3000423	43.0437726
531	Car ova	Carya ovata	shagbark hickory	7	1	Healthy	-89.30001204	43.04379406
532	Pru ser	Prunus serotina	black cherry	10	1	Healthy	-89.30003421	43.04380204
533	Car ova	Carya ovata	shagbark hickory	10	1	Healthy	-89.30006849	43.04384533
534	Pru ser	Prunus serotina	black cherry	11	1	Healthy	-89.30017309	43.04385525
535	Que alb	Quercus alba	white oak	17	1	Healthy	-89.30020555	43.04380753
536	Pru ser	Prunus serotina	black cherry	8	1	Healthy	-89.30009605	43.04374274
537	Pru ser	Prunus serotina	black cherry	7	1	Healthy	-89.30017367	43.04372079
538	Pru ser	Prunus serotina	black cherry	9	1	Healthy	-89.30015426	43.04373997
539	Pru ser	Prunus serotina	black cherry	9	1	Healthy	-89.30011892	43.04370255
540	Pru ser	Prunus serotina	black cherry	12	1	Healthy	-89.30015437	43.04366571
541	Pru ser	Prunus serotina	black cherry	13	1	Healthy	-89.30013361	43.04360345
542	Car ova	Carya ovata	shagbark hickory	6	1	Healthy	-89.30026232	43.04362602
543	Que alb	Quercus alba	white oak	6	1	Healthy	-89.30021205	43.04357732
544	Pru ser	Prunus serotina	black cherry	18	1	Healthy	-89.30016786	43.04354916
545	Pru ser	Prunus serotina	black cherry	8	1	Healthy	-89.30019959	43.0435211
546	Fra pen	Fraxinus pennsylvanica	green ash	13	1	Healthy	-89.30017566	43.04349939
547	Car ova	Carya ovata	shagbark hickory	11	1	Healthy	-89.3002991	43.0435161
548	Car ova	Carya ovata	shagbark hickory	6	1	Healthy	-89.30033046	43.04352691

549	Pru ser	Prunus serotina	black cherry	10	1	Healthy	-89.30031591	43.04354488
550	Pru ser	Prunus serotina	black cherry	11	1	Healthy	-89.30024327	43.04360668
551	Que rub	Quercus rubra	northern red oak	12	1	Healthy	-89.3002264	43.04362126
552	Pru ser	Prunus serotina	black cherry	13	1	Healthy	-89.3002517	43.04373533
553	Que alb	Quercus alba	white oak	11	1	Healthy	-89.30027999	43.04378311
554	Car ova	Carya ovata	shagbark hickory	7	1	Healthy	-89.30042076	43.04382748
555	Que alb	Quercus alba	white oak	10	1	Healthy	-89.30035408	43.04379861
556	Que rub	Quercus rubra	northern red oak	13	1	Healthy	-89.30037206	43.04385665
557	Que rub	Quercus rubra	northern red oak	22	1	Poor	-89.30035822	43.04382016
558	Que alb	Quercus alba	white oak	8	1	Healthy	-89.3004258	43.04388131
559	Pru ser	Prunus serotina	black cherry	7	1	Healthy	-89.30041228	43.04378088
560	Fra pen	Fraxinus pennsylvanica	green ash	8	1	Poor	-89.30041463	43.04374626
561	Rha cat	Rhamnus cathartica	buckthorn	7	1	Healthy	-89.30044208	43.04376374
562	Fra pen	Fraxinus pennsylvanica	green ash	13	2	Poor	-89.30048653	43.04367729
563	Ace neg	Acer negundo	box elder	20	2	Healthy	-89.30050953	43.04367694
564	Pru ser	Prunus serotina	black cherry	12	1	Healthy	-89.30055411	43.0436716
565	Pru ser	Prunus serotina	black cherry	11	1	Healthy	-89.30036512	43.04366367
566	Pru ser	Prunus serotina	black cherry	11	1	Healthy	-89.30027443	43.04367452
567	Pru ser	Prunus serotina	black cherry	9	1	Healthy	-89.30032278	43.04360239
568	Que rub	Quercus rubra	northern red oak	7	1	Healthy	-89.30032458	43.04359419
569	Car ova	Carya ovata	shagbark hickory	6	1	Healthy	-89.30039661	43.04355205
570	Car ova	Carya ovata	shagbark hickory	13	1	Healthy	-89.30041365	43.04359659
571	Cel occ	Celtis occidentalis	hackberry	9	1	Healthy	-89.30047049	43.04358469
572	Pru ser	Prunus serotina	black cherry	9	1	Healthy	-89.30049879	43.043597
573	Pru ser	Prunus serotina	black cherry	10	1	Healthy	-89.30050956	43.04362909
574	Pru ser	Prunus serotina	black cherry	29	4	Healthy	-89.30053108	43.04355663
575	Car ova	Carya ovata	shagbark hickory	13	1	Healthy	-89.30043473	43.04349808
576	Pru ser	Prunus serotina	black cherry	10	2	Healthy	-89.30054774	43.04348525
577	Pru ser	Prunus serotina	black cherry	7	1	Healthy	-89.30048326	43.04348139
578	Pru ser	Prunus serotina	black cherry	15	1	Healthy	-89.30044754	43.04345847
579	Car ova	Carya ovata	shagbark hickory	9	1	Healthy	-89.30034401	43.04346903
580	Pru ser	Prunus serotina	black cherry	15	1	Healthy	-89.30026731	43.04346167
581	Car ova	Carya ovata	shagbark hickory	7	1	Healthy	-89.30027788	43.04342301
582	Pru ser	Prunus serotina	black cherry	13	1	Healthy	-89.30023487	43.04340853
583	Rha cat	Rhamnus cathartica	buckthorn	6	1	Healthy	-89.30024272	43.04344414
584	Car ova	Carya ovata	shagbark hickory	6	1	Healthy	-89.30020001	43.04349024
585	Fra pen	Fraxinus pennsylvanica	green ash	15	1	Poor	-89.30012486	43.04345676
586	Pru ser	Prunus serotina	black cherry	12	2	Healthy	-89.30011221	43.04351857
587	Rha cat	Rhamnus cathartica	buckthorn	6	1	Healthy	-89.3000801	43.04349964
588	Que alb	Quercus alba	white oak	7	1	Healthy	-89.29996977	43.04347661
589	Pru ser	Prunus serotina	black cherry	10	1	Healthy	-89.29993011	43.04348254
590	Pru ser	Prunus serotina	black cherry	14	1	Healthy	-89.29990784	43.04344722
591	Car ova	Carya ovata	shagbark hickory	7	1	Healthy	-89.29986942	43.04345399
592	Pru ser	Prunus serotina	black cherry	9	1	Healthy	-89.29984906	43.04349982
593	Que alb	Quercus alba	white oak	6	1	Healthy	-89.29979505	43.04346031
594	Pru ser	Prunus serotina	black cherry	9	1	Healthy	-89.29977271	43.04347155
595	Pru ser	Prunus serotina	black cherry	6	1	Healthy	-89.29973007	43.04345385
596	Fra pen	Fraxinus pennsylvanica	green ash	6	1	Poor	-89.29971645	43.04347857
597	Car ova	Carya ovata	shagbark hickory	6	1	Poor	-89.29965303	43.0434413
598	Pru ser	Prunus serotina	black cherry	8	1	Healthy	-89.29963048	43.04344761
599	Pru ser	Prunus serotina	black cherry	12	1	Healthy	-89.29964592	43.0433922
600	Pru ser	Prunus serotina	black cherry	12	1	Healthy	-89.29958615	43.0434627
601	Pru ser	Prunus serotina	black cherry	13	1	Fair	-89.29954039	43.04345283
602	Pru ser	Prunus serotina	black cherry	11	1	Healthy	-89.29951511	43.04343585
603	Pru ser	Prunus serotina	black cherry	7	1	Healthy	-89.29956887	43.04341205
604	Pru ser	Prunus serotina	black cherry	10	1	Healthy	-89.29947709	43.04343565
605	Ace neg	Acer negundo	box elder	8	1	Healthy	-89.29927803	43.04338116
606	Pru ser	Prunus serotina	black cherry	6	1	Healthy	-89.29935447	43.04335672
607	Fra pen	Fraxinus pennsylvanica	green ash	22	1	Poor	-89.29926512	43.04334122
608	Car ova	Carya ovata	shagbark hickory	17	1	Healthy	-89.2991932	43.0433516
609	Pru ser	Prunus serotina	black cherry	14	1	Healthy	-89.29912542	43.04344684
610	Pru ser	Prunus serotina	black cherry	12	1	Healthy	-89.29912255	43.04348203
611	Pru ser	Prunus serotina	black cherry	12	1	Healthy	-89.29911425	43.04349931
612	Cel occ	Celtis occidentalis	hackberry	9	1	Healthy	-89.29906031	43.04346944
613	Car ova	Carya ovata	shagbark hickory	14	1	Healthy	-89.29902748	43.04353119
614	Car ova	Carya ovata	shagbark hickory	12	1	Healthy	-89.29896753	43.04351309
615	Car ova	Carya ovata	shagbark hickory	11	1	Healthy	-89.29889973	43.04357984
616	Fra pen	Fraxinus pennsylvanica	green ash	14	1	Poor	-89.29888122	43.04354298
617	Car ova	Carya ovata	shagbark hickory	6	1	Healthy	-89.29892066	43.04348661
618	Car ova	Carya ovata	shagbark hickory	11	1	Healthy	-89.29895661	43.04347688
619	Pru ser	Prunus serotina	black cherry	18	1	Healthy	-89.29893657	43.04346724
620	Fra pen	Fraxinus pennsylvanica	green ash	8	1	Poor	-89.29894201	43.0434683
621	Fra pen	Fraxinus pennsylvanica	green ash	10	1	Poor	-89.29894633	43.04344444
622	Fra pen	Fraxinus pennsylvanica	green ash	6	1	Poor	-89.29881795	43.04354261
623	Pru ser	Prunus serotina	black cherry	6	1	Healthy	-89.2988477	43.04354008
624	Ulm ame	Ulmus americana	American elm	7	1	Healthy	-89.29866765	43.04351606
625	Pru ser	Prunus serotina	black cherry	11	1	Healthy	-89.29866424	43.04350988
626	Pru ser	Prunus serotina	black cherry	16	1	Healthy	-89.29861602	43.04354562
627	Pru ser	Prunus serotina	black cherry	10	1	Healthy	-89.29862032	43.04350983

628	Ace neg	Acer negundo	box elder	10	1	Healthy	-89.29848551	43.04348811
629	Ulm ame	Ulmus americana	American elm	15	1	Healthy	-89.2983337	43.04346629
630	Fra pen	Fraxinus pennsylvanica	green ash	30	1	Poor	-89.29831396	43.04347272
631	Ace neg	Acer negundo	box elder	16	1	Poor	-89.29817052	43.04355416
632	Que mac	Quercus macrocarpa	bur oak	25	1	Healthy	-89.29744479	43.04388925
633	Que mac	Quercus macrocarpa	bur oak	30	1	Good	-89.29731371	43.04387387
634	Que mac	Quercus macrocarpa	bur oak	32	1	Good	-89.29729494	43.04374205
635	Que mac	Quercus macrocarpa	bur oak	48	2	Healthy	-89.29871092	43.04365072
636	Que ell	Quercus ellipsoidalis	northern pin oak	28	2	Healthy	-89.29956847	43.04373697
637	Que ell	Quercus ellipsoidalis	northern pin oak	11	1	Healthy	-89.29961703	43.04368864
638	Que ell	Quercus ellipsoidalis	northern pin oak	21	1	Healthy	-89.29964306	43.04367806
639	Que ell	Quercus ellipsoidalis	northern pin oak	19	1	Healthy	-89.29966885	43.04375277
640	Que mac	Quercus macrocarpa	bur oak	39	1	Healthy	-89.29985225	43.0437675
641	Que mac	Quercus macrocarpa	bur oak	28	1	Healthy	-89.29984958	43.04369949
642	Que ell	Quercus ellipsoidalis	northern pin oak	18	1	Healthy	-89.2999728	43.0436111
643	Que ell	Quercus ellipsoidalis	northern pin oak	14	1	Healthy	-89.30022058	43.04363444
644	Que mac	Quercus macrocarpa	bur oak	14	1	Healthy	-89.30040527	43.04370242
645	Que mac	Quercus macrocarpa	bur oak	7	1	Healthy	-89.30043989	43.04367014
646	Que mac	Quercus macrocarpa	bur oak	11	1	Healthy	-89.3004495	43.0437382
647	Que mac	Quercus macrocarpa	bur oak	10	1	Healthy	-89.30042416	43.04363893
648	Que mac	Quercus macrocarpa	bur oak	27	1	Fair	-89.30043867	43.04366053
649	Que mac	Quercus macrocarpa	bur oak	28	1	Healthy	-89.29877357	43.04358057
650	Que mac	Quercus macrocarpa	bur oak	26	1	Good	-89.29874157	43.04357194
651	Ace neg	Acer negundo	box elder	7	1	Healthy	-89.29807872	43.04348811
652	Ace neg	Acer negundo	box elder	7	1	Healthy	-89.29788633	43.04352628
653	Ulm ame	Ulmus americana	American elm	9	1	Healthy	-89.29776394	43.04352505
654	Fra pen	Fraxinus pennsylvanica	green ash	13	1	Healthy	-89.2977162	43.04355631
655	Ace neg	Acer negundo	box elder	11	1	Healthy	-89.29771431	43.04349283
656	Fra pen	Fraxinus pennsylvanica	green ash	19	1	Healthy	-89.2976686	43.04357998
657	Fra pen	Fraxinus pennsylvanica	green ash	14	1	Healthy	-89.29765493	43.0435953
658	Pru ser	Prunus serotina	black cherry	8	1	Healthy	-89.29759045	43.04358508
659	Ace neg	Acer negundo	box elder	7	1	Healthy	-89.2976046	43.04362026
660	Fra pen	Fraxinus pennsylvanica	green ash	24	1	Poor	-89.2975633	43.04362787
661	Pru ser	Prunus serotina	black cherry	7	1	Healthy	-89.297554	43.04364498
662	Pru ser	Prunus serotina	black cherry	6	1	Healthy	-89.29745428	43.04366956
663	Fra pen	Fraxinus pennsylvanica	green ash	16	1	Poor	-89.29742667	43.04366882
664	Pru ser	Prunus serotina	black cherry	10	1	Healthy	-89.29741402	43.04364545
665	Ace neg	Acer negundo	box elder	6	1	Healthy	-89.29740818	43.04363061
666	Fra pen	Fraxinus pennsylvanica	green ash	6	1	Poor	-89.29744789	43.04361222
667	Pop del	Populus deltoides	eastern cottonwood	31	1	Healthy	-89.29726909	43.04361349
668	Pop del	Populus deltoides	eastern cottonwood	29	1	Healthy	-89.29721065	43.04364648
669	Pru ser	Prunus serotina	black cherry	14	1	Healthy	-89.29718085	43.04360254
670	Que alb	Quercus alba	white oak	8	1	Healthy	-89.29716286	43.04362996
671	Pru ser	Prunus serotina	black cherry	11	1	Healthy	-89.29713307	43.04364139
672	Pru ser	Prunus serotina	black cherry	8	1	Healthy	-89.29723871	43.0436157
673	Fra pen	Fraxinus pennsylvanica	green ash	23	2	Poor	-89.29724973	43.04353052
674	Pru ser	Prunus serotina	black cherry	10	1	Healthy	-89.29723028	43.04352609
675	Pru ser	Prunus serotina	black cherry	15	1	Healthy	-89.29716139	43.04347196
676	Fra pen	Fraxinus pennsylvanica	green ash	39	3	Healthy	-89.29727032	43.04349732
677	Car ova	Carya ovata	shagbark hickory	16	1	Healthy	-89.29739116	43.04351324
678	Ace neg	Acer negundo	box elder	12	1	Healthy	-89.29747032	43.04346229
679	Fra pen	Fraxinus pennsylvanica	green ash	13	1	Poor	-89.29761851	43.04349887
680	Fra pen	Fraxinus pennsylvanica	green ash	11	1	Poor	-89.29761045	43.04355734
681	Ace neg	Acer negundo	box elder	18	1	Healthy	-89.29764891	43.04348706
682	Ace neg	Acer negundo	box elder	7	1	Healthy	-89.2976462	43.04347692
683	Fra pen	Fraxinus pennsylvanica	green ash	13	1	Poor	-89.29765766	43.04346215
684	Fra pen	Fraxinus pennsylvanica	green ash	16	1	Poor	-89.29771859	43.04351427
685	Cel occ	Celtis occidentalis	hackberry	13	1	Healthy	-89.29766301	43.04343267
686	Ulm ame	Ulmus americana	American elm	18	1	Healthy	-89.29768595	43.04340922
687	Pru ser	Prunus serotina	black cherry	13	1	Healthy	-89.29769658	43.04337007
688	Pru ser	Prunus serotina	black cherry	18	1	Healthy	-89.297753	43.04340405
689	Pru ser	Prunus serotina	black cherry	13	1	Healthy	-89.29780497	43.04343606
690	Ulm ame	Ulmus americana	American elm	9	1	Healthy	-89.29782608	43.04342242
691	Ulm ame	Ulmus americana	American elm	9	1	Healthy	-89.29793218	43.04341873
692	Pru ser	Prunus serotina	black cherry	21	1	Healthy	-89.29798772	43.04344207
693	Ulm ame	Ulmus americana	American elm	9	1	Healthy	-89.29805321	43.04340911
694	Pru ser	Prunus serotina	black cherry	7	1	Healthy	-89.29813344	43.04339262
695	Cel occ	Celtis occidentalis	hackberry	7	1	Healthy	-89.29810778	43.04343621
696	Ace neg	Acer negundo	box elder	10	1	Healthy	-89.29814624	43.04338854
697	Fra pen	Fraxinus pennsylvanica	green ash	13	1	Poor	-89.29817439	43.04342834
698	Pru ser	Prunus serotina	black cherry	7	1	Healthy	-89.29806766	43.04342432
699	Ace neg	Acer negundo	box elder	6	1	Healthy	-89.29818215	43.04340186
700	Pru ser	Prunus serotina	black cherry	6	1	Healthy	-89.29820313	43.04336503
701	Fra pen	Fraxinus pennsylvanica	green ash	24	1	Poor	-89.29822464	43.04335935
702	Pru ser	Prunus serotina	black cherry	10	1	Healthy	-89.29824911	43.04337997
703	Fra pen	Fraxinus pennsylvanica	green ash	7	1	Poor	-89.29827785	43.04335297
704	Fra pen	Fraxinus pennsylvanica	green ash	9	1	Poor	-89.29830324	43.04334591
705	Ace neg	Acer negundo	box elder	8	1	Poor	-89.29836637	43.0434309
706	Pru ser	Prunus serotina	black cherry	10	1	Healthy	-89.29839453	43.04336028

707	Pru ser	Prunus serotina	black cherry	9	1	Healthy	-89.2983507	43.04333644
708	Pru ser	Prunus serotina	black cherry	7	1	Healthy	-89.29849311	43.04334347
709	Ace neg	Acer negundo	box elder	6	1	Healthy	-89.29854136	43.04338842
710	Ulm ame	Ulmus americana	American elm	6	1	Healthy	-89.29856264	43.04337752
711	Pru ser	Prunus serotina	black cherry	10	1	Healthy	-89.29858667	43.04339322
712	Ulm ame	Ulmus americana	American elm	8	1	Healthy	-89.29860471	43.04345703
713	Pru ser	Prunus serotina	black cherry	9	1	Healthy	-89.29867136	43.04343799
714	Pru ser	Prunus serotina	black cherry	7	1	Healthy	-89.29871648	43.04346967
715	Fra pen	Fraxinus pennsylvanica	green ash	7	1	Poor	-89.29883634	43.04344043
716	Fra pen	Fraxinus pennsylvanica	green ash	10	1	Poor	-89.29885955	43.04342414
717	Fra pen	Fraxinus pennsylvanica	green ash	13	1	Poor	-89.29886401	43.04343402
718	Pru ser	Prunus serotina	black cherry	6	1	Healthy	-89.29888149	43.04337917
719	Ace neg	Acer negundo	box elder	8	1	Healthy	-89.29890085	43.04341111
720	Pru ser	Prunus serotina	black cherry	14	1	Healthy	-89.29890345	43.04339768
721	Pru ser	Prunus serotina	black cherry	11	1	Healthy	-89.29890265	43.0434279
722	Que rub	Quercus rubra	northern red oak	13	1	Healthy	-89.29898098	43.04336439
723	Car ova	Carya ovata	shagbark hickory	10	1	Healthy	-89.29908397	43.04338851
724	Car ova	Carya ovata	shagbark hickory	7	1	Healthy	-89.29907828	43.04335539
725	Fra pen	Fraxinus pennsylvanica	green ash	7	1	Poor	-89.29901981	43.04327591
726	Car ova	Carya ovata	shagbark hickory	9	1	Healthy	-89.2991709	43.04328137
727	Ulm ame	Ulmus americana	American elm	10	1	Healthy	-89.29916634	43.04325598
728	Ulm ame	Ulmus americana	American elm	11	1	Healthy	-89.29921034	43.04322017
729	Fra pen	Fraxinus pennsylvanica	green ash	12	1	Poor	-89.29938495	43.04326679
730	Car ova	Carya ovata	shagbark hickory	6	1	Healthy	-89.29939059	43.04333074
731	Pru ser	Prunus serotina	black cherry	10	1	Healthy	-89.29956539	43.04335296
732	Pru ser	Prunus serotina	black cherry	6	1	Healthy	-89.29960756	43.04330927
733	Pru ser	Prunus serotina	black cherry	8	1	Healthy	-89.29962456	43.04336536
734	Fra pen	Fraxinus pennsylvanica	green ash	7	1	Poor	-89.29956374	43.04336473
735	Pru ser	Prunus serotina	black cherry	8	1	Healthy	-89.2997706	43.04331104
736	Car ova	Carya ovata	shagbark hickory	6	1	Healthy	-89.29978593	43.0433151
737	Car ova	Carya ovata	shagbark hickory	7	1	Healthy	-89.29981369	43.04334989
738	Pru ser	Prunus serotina	black cherry	13	1	Healthy	-89.29981118	43.04340781
739	Pru ser	Prunus serotina	black cherry	7	1	Healthy	-89.29979009	43.04341489
740	Que alb	Quercus alba	white oak	6	1	Healthy	-89.29988584	43.04340331
741	Pru ser	Prunus serotina	black cherry	13	1	Healthy	-89.29992884	43.04339285
742	Pru ser	Prunus serotina	black cherry	7	1	Healthy	-89.29998402	43.04341231
743	Fra pen	Fraxinus pennsylvanica	green ash	6	1	Poor	-89.30003725	43.04338313
744	Pru ser	Prunus serotina	black cherry	9	1	Healthy	-89.3000377	43.04341754
745	Fra pen	Fraxinus pennsylvanica	green ash	6	1	Poor	-89.30000338	43.04342626
746	Pru ser	Prunus serotina	black cherry	9	1	Healthy	-89.2999411	43.0434415
747	Fra pen	Fraxinus pennsylvanica	green ash	15	1	Healthy	-89.30005681	43.04346517
748	Pru ser	Prunus serotina	black cherry	13	2	Healthy	-89.30009459	43.04341603
749	Pru ser	Prunus serotina	black cherry	13	1	Healthy	-89.30005841	43.04335285
750	Pru ser	Prunus serotina	black cherry	11	1	Healthy	-89.30002867	43.04335094
751	Fra pen	Fraxinus pennsylvanica	green ash	10	1	Poor	-89.29991958	43.04335794
752	Pru ser	Prunus serotina	black cherry	8	1	Healthy	-89.3001214	43.04334097
753	Pru ser	Prunus serotina	black cherry	8	1	Healthy	-89.30016075	43.04331008
754	Car ova	Carya ovata	shagbark hickory	6	1	Healthy	-89.30020513	43.04330074
755	Pru ser	Prunus serotina	black cherry	12	1	Healthy	-89.30012897	43.0433055
756	Pru ser	Prunus serotina	black cherry	12	1	Healthy	-89.30006248	43.04327108
757	Pru ser	Prunus serotina	black cherry	10	1	Healthy	-89.30022626	43.04325275
758	Pru ser	Prunus serotina	black cherry	10	1	Healthy	-89.30014029	43.04321705
759	Fra pen	Fraxinus pennsylvanica	green ash	6	1	Poor	-89.30013934	43.04321349
760	Pru ser	Prunus serotina	black cherry	11	1	Healthy	-89.30018262	43.04313338
761	Pru ser	Prunus serotina	black cherry	6	1	Healthy	-89.30016998	43.04323607
762	Pru ser	Prunus serotina	black cherry	7	1	Healthy	-89.30024988	43.04318214
763	Pru ser	Prunus serotina	black cherry	9	1	Healthy	-89.30027678	43.04316437
764	Fra pen	Fraxinus pennsylvanica	green ash	6	1	Poor	-89.30026351	43.04314379
765	Pru ser	Prunus serotina	black cherry	10	1	Healthy	-89.30034494	43.0431324
766	Pru ser	Prunus serotina	black cherry	10	1	Healthy	-89.30036173	43.04316995
767	Pru ser	Prunus serotina	black cherry	7	1	Healthy	-89.30038036	43.04317945
768	Pru ser	Prunus serotina	black cherry	9	1	Healthy	-89.30035025	43.04322007
769	Pru ser	Prunus serotina	black cherry	17	2	Healthy	-89.3003221	43.04326515
770	Car ova	Carya ovata	shagbark hickory	6	1	Healthy	-89.30029693	43.04325673
771	Fra pen	Fraxinus pennsylvanica	green ash	8	1	Fair	-89.30028436	43.04329567
772	Pru ser	Prunus serotina	black cherry	7	1	Healthy	-89.30027692	43.04333073
773	Pru ser	Prunus serotina	black cherry	9	1	Fair	-89.30030658	43.04337525
774	Pru ser	Prunus serotina	black cherry	16	2	Healthy	-89.30035014	43.04336627
775	Pru ser	Prunus serotina	black cherry	9	1	Healthy	-89.30036744	43.04334334
776	Car ova	Carya ovata	shagbark hickory	7	1	Healthy	-89.30035837	43.04337398
777	Ace neg	Acer negundo	box elder	8	1	Healthy	-89.30043477	43.04338954
778	Car ova	Carya ovata	shagbark hickory	11	1	Healthy	-89.30045145	43.04336018
779	Pru ser	Prunus serotina	black cherry	11	1	Healthy	-89.30055472	43.04343538
780	Pru ser	Prunus serotina	black cherry	6	1	Healthy	-89.30052584	43.0434359
781	Pru ser	Prunus serotina	black cherry	12	2	Healthy	-89.30054097	43.04344109
782	Pru ser	Prunus serotina	black cherry	6	1	Healthy	-89.300494	43.04339699
783	Pru ser	Prunus serotina	black cherry	9	1	Healthy	-89.30049696	43.04336661
784	Pru ser	Prunus serotina	black cherry	7	1	Healthy	-89.30050778	43.04336269
785	Pru ser	Prunus serotina	black cherry	17	3	Healthy	-89.30053847	43.04332939

786	Pru ser	Prunus serotina	black cherry	9	1	Healthy	-89.30051828	43.04332068
787	Ace neg	Acer negundo	box elder	7	1	Healthy	-89.30048258	43.04334413
788	Pru ser	Prunus serotina	black cherry	10	1	Healthy	-89.30045673	43.0433605
789	Pru ser	Prunus serotina	black cherry	8	1	Healthy	-89.30049979	43.04327626
790	Pru ser	Prunus serotina	black cherry	7	1	Healthy	-89.30049968	43.04325712
791	Pru ser	Prunus serotina	black cherry	10	1	Healthy	-89.30052779	43.04324581
792	Pru ser	Prunus serotina	black cherry	14	1	Healthy	-89.30051414	43.04321736
793	Car ova	Carya ovata	shagbark hickory	15	1	Healthy	-89.30044963	43.04326676
794	Pru ser	Prunus serotina	black cherry	8	1	Healthy	-89.30042372	43.04324598
795	Fra pen	Fraxinus pennsylvanica	green ash	8	1	Healthy	-89.30037378	43.04329264
796	Ace neg	Acer negundo	box elder	7	1	Healthy	-89.30035348	43.04328993
797	Car ova	Carya ovata	shagbark hickory	9	1	Healthy	-89.30043151	43.04320018
798	Car ova	Carya ovata	shagbark hickory	22	1	Healthy	-89.30043048	43.04321013
799	Pru ser	Prunus serotina	black cherry	13	1	Healthy	-89.30045262	43.0430389
800	Pop tre	Populus tremuloides	quaking aspen	7	1	Healthy	-89.30045405	43.04305424
801	Ace neg	Acer negundo	box elder	9	1	Healthy	-89.30045048	43.04305096
802	Ace neg	Acer negundo	box elder	6	1	Healthy	-89.30041169	43.04305005
803	Que rub	Quercus rubra	northern red oak	6	1	Healthy	-89.30037595	43.04304949
804	Car ova	Carya ovata	shagbark hickory	6	1	Healthy	-89.30040084	43.04300371
805	Que rub	Quercus rubra	northern red oak	14	1	Healthy	-89.30043192	43.04299605
806	Car ova	Carya ovata	shagbark hickory	11	1	Healthy	-89.30041761	43.04298123
807	Car ova	Carya ovata	shagbark hickory	6	1	Healthy	-89.30036509	43.04301594
808	Ace neg	Acer negundo	box elder	6	1	Healthy	-89.30031416	43.04304705
809	Car ova	Carya ovata	shagbark hickory	8	1	Healthy	-89.30032852	43.04303586
810	Ace neg	Acer negundo	box elder	10	1	Healthy	-89.30033736	43.04312017
811	Car ova	Carya ovata	shagbark hickory	22	1	Healthy	-89.30019456	43.04310841
812	Pru ser	Prunus serotina	black cherry	9	1	Healthy	-89.30015926	43.04315038
813	Fra pen	Fraxinus pennsylvanica	green ash	7	1	Poor	-89.3001396	43.04310572
814	Fra pen	Fraxinus pennsylvanica	green ash	9	1	Poor	-89.30016528	43.04309841
815	Pru ser	Prunus serotina	black cherry	12	1	Healthy	-89.29998436	43.04318558
816	Pru ser	Prunus serotina	black cherry	15	1	Healthy	-89.29996913	43.04320946
817	Pru ser	Prunus serotina	black cherry	10	1	Healthy	-89.29999616	43.04325862
818	Que alb	Quercus alba	white oak	7	1	Healthy	-89.29998908	43.04328468
819	Pru ser	Prunus serotina	black cherry	7	1	Healthy	-89.29998447	43.04329755
820	Pru ser	Prunus serotina	black cherry	8	1	Healthy	-89.29996761	43.04332514
821	Pru ser	Prunus serotina	black cherry	8	1	Healthy	-89.29990672	43.04332043
822	Que alb	Quercus alba	white oak	10	1	Healthy	-89.29990519	43.04332018
823	Que alb	Quercus alba	white oak	11	1	Healthy	-89.29991281	43.04327851
824	Car ova	Carya ovata	shagbark hickory	13	1	Healthy	-89.29985855	43.04331875
825	Car ova	Carya ovata	shagbark hickory	8	1	Healthy	-89.29983921	43.04321696
826	Car ova	Carya ovata	shagbark hickory	15	1	Healthy	-89.29981801	43.04322532
827	Car ova	Carya ovata	shagbark hickory	7	1	Healthy	-89.29978429	43.04323404
828	Car ova	Carya ovata	shagbark hickory	14	1	Healthy	-89.29967035	43.04321943
829	Fra pen	Fraxinus pennsylvanica	green ash	8	1	Poor	-89.29964899	43.04327975
830	Car ova	Carya ovata	shagbark hickory	8	1	Healthy	-89.29951187	43.04329377
831	Fra pen	Fraxinus pennsylvanica	green ash	8	1	Poor	-89.29954884	43.04308527
832	Fra pen	Fraxinus pennsylvanica	green ash	6	1	Poor	-89.29955573	43.04313575
833	Car ova	Carya ovata	shagbark hickory	9	1	Healthy	-89.29971887	43.04312721
834	Fra pen	Fraxinus pennsylvanica	green ash	18	1	Poor	-89.29973325	43.04307387
835	Fra pen	Fraxinus pennsylvanica	green ash	13	1	Poor	-89.29974085	43.0430606
836	Fra pen	Fraxinus pennsylvanica	green ash	17	1	Poor	-89.29977485	43.04310949
837	Fra pen	Fraxinus pennsylvanica	green ash	14	1	Poor	-89.29979035	43.04315051
838	Fra pen	Fraxinus pennsylvanica	green ash	11	1	Poor	-89.29977057	43.0431744
839	Car ova	Carya ovata	shagbark hickory	7	1	Healthy	-89.29975018	43.04320156
840	Car ova	Carya ovata	shagbark hickory	6	1	Healthy	-89.29971936	43.04318476
841	Car ova	Carya ovata	shagbark hickory	7	1	Healthy	-89.29981991	43.04319342
842	Fra pen	Fraxinus pennsylvanica	green ash	12	1	Poor	-89.29989557	43.04315962
843	Fra pen	Fraxinus pennsylvanica	green ash	17	1	Poor	-89.29993458	43.04317985
844	Fra pen	Fraxinus pennsylvanica	green ash	15	1	Poor	-89.29996602	43.04314407
845	Pru ser	Prunus serotina	black cherry	10	1	Healthy	-89.30008132	43.04301937
846	Fra pen	Fraxinus pennsylvanica	green ash	9	1	Poor	-89.29996277	43.04307628
847	Fra pen	Fraxinus pennsylvanica	green ash	16	1	Poor	-89.29993683	43.04313171
848	Fra pen	Fraxinus pennsylvanica	green ash	13	1	Poor	-89.29989214	43.04312114
849	Fra pen	Fraxinus pennsylvanica	green ash	10	1	Poor	-89.2999333	43.04315314
850	Fra pen	Fraxinus pennsylvanica	green ash	16	1	Poor	-89.29988313	43.04311256
851	Ace neg	Acer negundo	box elder	7	1	Poor	-89.2998346	43.04310435
852	Ace neg	Acer negundo	box elder	9	1	Poor	-89.29991066	43.04310893
853	Cel occ	Celtis occidentalis	hackberry	7	1	Healthy	-89.29996515	43.04304534
854	Fra pen	Fraxinus pennsylvanica	green ash	14	1	Poor	-89.29998069	43.04303354
855	Fra pen	Fraxinus pennsylvanica	green ash	11	1	Poor	-89.29998361	43.04305219
856	Que alb	Quercus alba	white oak	6	1	Healthy	-89.29999049	43.04307032
857	Fra pen	Fraxinus pennsylvanica	green ash	7	1	Poor	-89.30003638	43.04304106
858	Que rub	Quercus rubra	northern red oak	17	1	Healthy	-89.30002838	43.04297575
859	Que rub	Quercus rubra	northern red oak	17	1	Healthy	-89.30006851	43.04294557
860	Car ova	Carya ovata	shagbark hickory	8	1	Healthy	-89.300123	43.04293807
861	Car ova	Carya ovata	shagbark hickory	6	1	Healthy	-89.30013334	43.04297755
862	Car ova	Carya ovata	shagbark hickory	8	1	Healthy	-89.30011879	43.0430163
863	Que rub	Quercus rubra	northern red oak	15	1	Healthy	-89.30021755	43.04300414
864	Pru ser	Prunus serotina	black cherry	8	1	Healthy	-89.3002754	43.04298879

865	Pru ser	Prunus serotina	black cherry	7	1	Healthy	-89.30015334	43.04295278
866	Car ova	Carya ovata	shagbark hickory	14	1	Healthy	-89.30031511	43.04299107
867	Ulm ame	Ulmus americana	American elm	7	1	Healthy	-89.30042092	43.04295461
868	Car ova	Carya ovata	shagbark hickory	6	1	Healthy	-89.30043836	43.04293678
869	Pru ser	Prunus serotina	black cherry	14	1	Healthy	-89.30047886	43.04292105
870	Pru ser	Prunus serotina	black cherry	13	2	Healthy	-89.30042948	43.0429276
871	Pru ser	Prunus serotina	black cherry	6	1	Healthy	-89.30035211	43.04291082
872	Car ova	Carya ovata	shagbark hickory	11	1	Healthy	-89.3004355	43.04284778
873	Pru ser	Prunus serotina	black cherry	15	1	Healthy	-89.30037943	43.0428476
874	Ace neg	Acer negundo	box elder	18	2	Healthy	-89.30047003	43.04285146
875	Que rub	Quercus rubra	northern red oak	24	2	Healthy	-89.30038778	43.04282483
876	Que rub	Quercus rubra	northern red oak	20	1	Healthy	-89.30038731	43.04283195
877	Que rub	Quercus rubra	northern red oak	10	1	Healthy	-89.30035069	43.04284121
878	Que rub	Quercus rubra	northern red oak	18	1	Healthy	-89.30032053	43.04286056
879	Que rub	Quercus rubra	northern red oak	11	1	Healthy	-89.30032675	43.04285983
880	Que rub	Quercus rubra	northern red oak	15	1	Healthy	-89.30031468	43.04290286
881	Que alb	Quercus alba	white oak	7	1	Healthy	-89.30001933	43.04286713
882	Que alb	Quercus alba	white oak	20	1	Healthy	-89.29998438	43.04294868
883	Pop tre	Populus tremuloides	quaking aspen	19	1	Poor	-89.2999815	43.04295654
884	Que alb	Quercus alba	white oak	16	1	Healthy	-89.29992944	43.04293409
885	Pru ser	Prunus serotina	black cherry	9	1	Healthy	-89.29986427	43.0429208
886	Ace neg	Acer negundo	box elder	7	1	Healthy	-89.29986158	43.04299332
887	Fra pen	Fraxinus pennsylvanica	green ash	9	1	Poor	-89.29985589	43.04302611
888	Fra pen	Fraxinus pennsylvanica	green ash	13	1	Poor	-89.29987022	43.04304506
889	Fra pen	Fraxinus pennsylvanica	green ash	13	1	Poor	-89.29985126	43.04305817
890	Fra pen	Fraxinus pennsylvanica	green ash	14	1	Poor	-89.29983661	43.04304484
891	Fra pen	Fraxinus pennsylvanica	green ash	12	1	Poor	-89.29982394	43.04301697
892	Fra pen	Fraxinus pennsylvanica	green ash	14	1	Poor	-89.29981994	43.04297563
893	Fra pen	Fraxinus pennsylvanica	green ash	18	1	Poor	-89.29979541	43.04296628
894	Fra pen	Fraxinus pennsylvanica	green ash	12	1	Poor	-89.29974985	43.0429951
895	Fra pen	Fraxinus pennsylvanica	green ash	16	1	Poor	-89.29975327	43.04300253
896	Fra pen	Fraxinus pennsylvanica	green ash	18	1	Poor	-89.29973793	43.04301979
897	Fra pen	Fraxinus pennsylvanica	green ash	13	1	Poor	-89.29970751	43.04304979
898	Fra pen	Fraxinus pennsylvanica	green ash	8	1	Poor	-89.29970457	43.04301113
899	Car ova	Carya ovata	shagbark hickory	6	1	Healthy	-89.29970228	43.04295853
900	Car ova	Carya ovata	shagbark hickory	7	1	Healthy	-89.29969977	43.0429561
901	Car ova	Carya ovata	shagbark hickory	6	1	Healthy	-89.2996788	43.04295739
902	Car ova	Carya ovata	shagbark hickory	7	1	Healthy	-89.29965674	43.04293562
903	Que alb	Quercus alba	white oak	15	1	Healthy	-89.29966599	43.04288759
904	Ace neg	Acer negundo	box elder	17	1	Healthy	-89.29966801	43.04284776
905	Que rub	Quercus rubra	northern red oak	15	1	Healthy	-89.29984846	43.04285662
906	Car ova	Carya ovata	shagbark hickory	14	1	Healthy	-89.29983609	43.04293831
907	Fra pen	Fraxinus pennsylvanica	green ash	9	1	Poor	-89.29985325	43.0428475
908	Ulm ame	Ulmus americana	American elm	6	1	Healthy	-89.29988992	43.04284116
909	Ace neg	Acer negundo	box elder	24	1	Healthy	-89.30034699	43.0426437
910	Pru ser	Prunus serotina	black cherry	11	1	Healthy	-89.29909252	43.04314222
911	Pru ser	Prunus serotina	black cherry	11	1	Healthy	-89.29894797	43.04319456
912	Ace neg	Acer negundo	box elder	8	1	Healthy	-89.29900275	43.04326422
913	Car ova	Carya ovata	shagbark hickory	6	1	Healthy	-89.29895984	43.04327422
914	Car ova	Carya ovata	shagbark hickory	7	1	Healthy	-89.29887351	43.04330791
915	Fra pen	Fraxinus pennsylvanica	green ash	8	1	Healthy	-89.29886332	43.04334916
916	Ace neg	Acer negundo	box elder	10	1	Healthy	-89.29882996	43.04329983
917	Fra pen	Fraxinus pennsylvanica	green ash	22	1	Poor	-89.2988551	43.04319084
918	Fra pen	Fraxinus pennsylvanica	green ash	16	1	Poor	-89.29881412	43.04318397
919	Fra pen	Fraxinus pennsylvanica	green ash	10	1	Poor	-89.29870351	43.04329773
920	Ulm ame	Ulmus americana	American elm	8	1	Poor	-89.2986266	43.04327304
921	Ace neg	Acer negundo	box elder	7	1	Healthy	-89.29862268	43.04324521
922	Ulm ame	Ulmus americana	American elm	8	1	Healthy	-89.29849888	43.04330406
923	Pru ser	Prunus serotina	black cherry	11	1	Healthy	-89.29854337	43.04325344
924	Pru ser	Prunus serotina	black cherry	14	1	Healthy	-89.29857589	43.04329056
925	Ulm ame	Ulmus americana	American elm	7	1	Healthy	-89.29854548	43.04319902
926	Pru ser	Prunus serotina	black cherry	9	1	Healthy	-89.29846344	43.04321657
927	Pru ser	Prunus serotina	black cherry	6	1	Healthy	-89.29839835	43.04318256
928	Pru ser	Prunus serotina	black cherry	12	1	Healthy	-89.29838017	43.04327447
929	Ace neg	Acer negundo	box elder	7	1	Healthy	-89.29831392	43.04328404
930	Ace neg	Acer negundo	box elder	14	1	Healthy	-89.29829834	43.04319149
931	Pru ser	Prunus serotina	black cherry	13	1	Healthy	-89.29834778	43.04311587
932	Pru ser	Prunus serotina	black cherry	13	1	Healthy	-89.29831689	43.0430674
933	Pru ser	Prunus serotina	black cherry	10	1	Healthy	-89.29829018	43.04311571
934	Pru ser	Prunus serotina	black cherry	9	1	Healthy	-89.2983042	43.04311049
935	Pru ser	Prunus serotina	black cherry	7	1	Healthy	-89.29820776	43.04312232
936	Pru ser	Prunus serotina	black cherry	7	1	Healthy	-89.29821681	43.04318363
937	Fra pen	Fraxinus pennsylvanica	green ash	11	1	Healthy	-89.29818939	43.04323249
938	Fra pen	Fraxinus pennsylvanica	green ash	8	1	Poor	-89.29823535	43.04330334
939	Pru ser	Prunus serotina	black cherry	15	1	Poor	-89.29814805	43.04322382
940	Pru ser	Prunus serotina	black cherry	15	1	Healthy	-89.29821386	43.04309256
941	Pru ser	Prunus serotina	black cherry	12	1	Healthy	-89.29799486	43.04310906
942	Pru ser	Prunus serotina	black cherry	10	1	Healthy	-89.29809328	43.04315348
943	Ulm ame	Ulmus americana	American elm	12	1	Healthy	-89.29811116	43.04322694

944	Fra pen	Fraxinus pennsylvanica	green ash	17	1	Poor	-89.29809635	43.04331498
945	Ace neg	Acer negundo	box elder	7	1	Healthy	-89.29811378	43.0433162
946	Fra pen	Fraxinus pennsylvanica	green ash	15	1	Poor	-89.29802885	43.04332686
947	Pru ser	Prunus serotina	black cherry	17	1	Healthy	-89.29800955	43.04332666
948	Pru ser	Prunus serotina	black cherry	12	1	Healthy	-89.29806152	43.04329249
949	Pru ser	Prunus serotina	black cherry	12	1	Healthy	-89.29804791	43.04328234
950	Fra pen	Fraxinus pennsylvanica	green ash	14	1	Healthy	-89.29804219	43.04323707
951	Pru ser	Prunus serotina	black cherry	9	1	Healthy	-89.29801604	43.04320693
952	Pru ser	Prunus serotina	black cherry	13	1	Healthy	-89.29796004	43.04317623
953	Pru ser	Prunus serotina	black cherry	11	1	Healthy	-89.2979756	43.04313632
954	Fra pen	Fraxinus pennsylvanica	green ash	14	1	Poor	-89.29786019	43.04316551
955	Ulm ame	Ulmus americana	American elm	9	1	Healthy	-89.29784383	43.04318113
956	Fra pen	Fraxinus pennsylvanica	green ash	11	1	Poor	-89.29782886	43.0431838
957	Fra pen	Fraxinus pennsylvanica	green ash	14	1	Poor	-89.29788536	43.04319754
958	Fra pen	Fraxinus pennsylvanica	green ash	17	1	Poor	-89.2978306	43.04322723
959	Pru ser	Prunus serotina	black cherry	9	1	Healthy	-89.29786847	43.04326428
960	Fra pen	Fraxinus pennsylvanica	green ash	16	1	Poor	-89.29799585	43.04329599
961	Fra pen	Fraxinus pennsylvanica	green ash	14	1	Poor	-89.29793924	43.04330676
962	Fra pen	Fraxinus pennsylvanica	green ash	18	1	Poor	-89.29798719	43.04333334
963	Fra pen	Fraxinus pennsylvanica	green ash	8	1	Poor	-89.29792961	43.04336993
964	Pru ser	Prunus serotina	black cherry	10	1	Healthy	-89.29788096	43.04334995
965	Pru ser	Prunus serotina	black cherry	24	2	Healthy	-89.29774142	43.04326898
966	Fra pen	Fraxinus pennsylvanica	green ash	7	1	Poor	-89.29778079	43.04323109
967	Fra pen	Fraxinus pennsylvanica	green ash	10	1	Poor	-89.29766082	43.04316987
968	Pru ser	Prunus serotina	black cherry	15	1	Healthy	-89.29765207	43.04325387
969	Ulm ame	Ulmus americana	American elm	6	1	Healthy	-89.29758686	43.04323379
970	Pru ser	Prunus serotina	black cherry	10	1	Healthy	-89.29760235	43.04325072
971	Fra pen	Fraxinus pennsylvanica	green ash	14	1	Poor	-89.29759862	43.04320043
972	Fra pen	Fraxinus pennsylvanica	green ash	12	1	Poor	-89.29753879	43.04318182
973	Ace neg	Acer negundo	box elder	13	1	Healthy	-89.29755126	43.04327213
974	Ulm ame	Ulmus americana	American elm	7	1	Healthy	-89.29750344	43.04325777
975	Ulm ame	Ulmus americana	American elm	10	1	Healthy	-89.2974357	43.04323008
976	Fra pen	Fraxinus pennsylvanica	green ash	13	1	Poor	-89.2974047	43.04328218
977	Fra pen	Fraxinus pennsylvanica	green ash	27	1	Poor	-89.29743183	43.0432617
978	Pru ser	Prunus serotina	black cherry	11	1	Healthy	-89.29745973	43.04332393
979	Pop del	Populus deltoides	eastern cottonwood	30	1	Healthy	-89.29741524	43.04341568
980	Ulm ame	Ulmus americana	American elm	10	1	Healthy	-89.29753576	43.043434
981	Ace neg	Acer negundo	box elder	8	1	Healthy	-89.29730877	43.04333671
982	Fra pen	Fraxinus pennsylvanica	green ash	8	1	Poor	-89.29725353	43.04339624
983	Car ova	Carya ovata	shagbark hickory	13	1	Healthy	-89.29718509	43.04336443
984	Que mac	Quercus macrocarpa	bur oak	29	1	Healthy	-89.29813379	43.04348404
985	Que mac	Quercus macrocarpa	bur oak	28	1	Healthy	-89.29790123	43.04348331
986	Que mac	Quercus macrocarpa	bur oak	38	1	Healthy	-89.29852213	43.04334664
987	Que mac	Quercus macrocarpa	bur oak	32	1	Healthy	-89.29859651	43.04331927
988	Que mac	Quercus macrocarpa	bur oak	38	1	Healthy	-89.29916836	43.04323234
989	Que mac	Quercus macrocarpa	bur oak	28	1	Healthy	-89.29926099	43.04327535
990	Que mac	Quercus macrocarpa	bur oak	21	1	Healthy	-89.299322	43.04320431
991	Que mac	Quercus macrocarpa	bur oak	29	1	Healthy	-89.29944379	43.04320642
992	Que mac	Quercus macrocarpa	bur oak	32	1	Healthy	-89.29960561	43.0432496
993	Que mac	Quercus macrocarpa	bur oak	20	1	Good	-89.29965632	43.04312007
994	Que mac	Quercus macrocarpa	bur oak	12	1	Healthy	-89.30036639	43.04293417
995	Que ell	Quercus ellipsoidalis	northern pin oak	20	1	Healthy	-89.30031953	43.04281551
996	Que mac	Quercus macrocarpa	bur oak	30	1	Healthy	-89.29733016	43.04332202
997	Fra pen	Fraxinus pennsylvanica	green ash	12	1	Poor	-89.29744111	43.04319109
998	Fra pen	Fraxinus pennsylvanica	green ash	14	1	Poor	-89.2974478	43.04318229
999	Car ova	Carya ovata	shagbark hickory	9	1	Healthy	-89.29737802	43.04309276
1000	Fra pen	Fraxinus pennsylvanica	green ash	16	1	Healthy	-89.29735465	43.04312363
1001	Ace neg	Acer negundo	box elder	6	1	Healthy	-89.29731828	43.04314719
1002	Fra pen	Fraxinus pennsylvanica	green ash	16	1	Poor	-89.29733885	43.04317632
1003	Ace neg	Acer negundo	box elder	14	1	Healthy	-89.29727946	43.04322136
1004	Que rub	Quercus rubra	northern red oak	20	1	Healthy	-89.29720921	43.0431001
1005	Fra pen	Fraxinus pennsylvanica	green ash	14	1	Poor	-89.29743254	43.04305377
1006	Ace neg	Acer negundo	box elder	7	1	Healthy	-89.29745573	43.04304471
1007	Fra pen	Fraxinus pennsylvanica	green ash	13	1	Poor	-89.29749964	43.04312132
1008	Fra pen	Fraxinus pennsylvanica	green ash	16	1	Poor	-89.29752675	43.04311468
1009	Fra pen	Fraxinus pennsylvanica	green ash	16	1	Poor	-89.29756168	43.043122
1010	Fra pen	Fraxinus pennsylvanica	green ash	10	1	Poor	-89.29736726	43.04301772
1011	Ace neg	Acer negundo	box elder	8	1	Healthy	-89.29732679	43.04299089
1012	Fra pen	Fraxinus pennsylvanica	green ash	10	1	Poor	-89.29727351	43.04299092
1013	Fra pen	Fraxinus pennsylvanica	green ash	18	1	Poor	-89.297278	43.04303713
1014	Fra pen	Fraxinus pennsylvanica	green ash	18	1	Poor	-89.29715623	43.04304679
1015	Fra pen	Fraxinus pennsylvanica	green ash	13	1	Poor	-89.29722984	43.04297009
1016	Fra pen	Fraxinus pennsylvanica	green ash	11	1	Poor	-89.29718152	43.042933
1017	Fra pen	Fraxinus pennsylvanica	green ash	9	1	Poor	-89.29727684	43.04291458
1018	Fra pen	Fraxinus pennsylvanica	green ash	15	1	Poor	-89.29726755	43.04290514
1019	Fra pen	Fraxinus pennsylvanica	green ash	13	1	Poor	-89.29727763	43.04288771
1020	Fra pen	Fraxinus pennsylvanica	green ash	11	1	Poor	-89.29731929	43.04285752
1021	Fra pen	Fraxinus pennsylvanica	green ash	9	1	Poor	-89.29733246	43.04288632
1022	Fra pen	Fraxinus pennsylvanica	green ash	7	1	Poor	-89.29759164	43.04298465

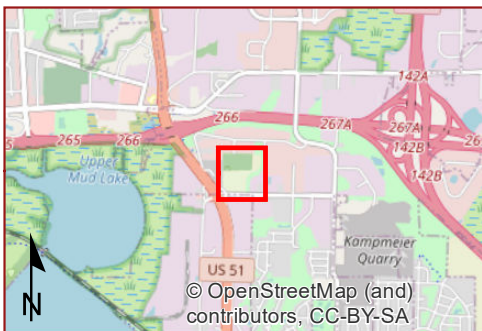
1023	Fra pen	Fraxinus pennsylvanica	green ash	9	1	Poor	-89.29760432	43.04300231
1024	Ace neg	Acer negundo	box elder	8	1	Healthy	-89.29765236	43.04298401
1025	Fra pen	Fraxinus pennsylvanica	green ash	10	1	Healthy	-89.29769538	43.04296473
1026	Fra pen	Fraxinus pennsylvanica	green ash	39	3	Poor	-89.29772651	43.04290143
1027	Fra pen	Fraxinus pennsylvanica	green ash	11	1	Poor	-89.2977945	43.04298686
1028	Ace neg	Acer negundo	box elder	11	1	Healthy	-89.29785164	43.04296207
1029	Fra pen	Fraxinus pennsylvanica	green ash	9	1	Poor	-89.29784286	43.04300456
1030	Fra pen	Fraxinus pennsylvanica	green ash	15	1	Poor	-89.29789521	43.04295616
1031	Ulm ame	Ulmus americana	American elm	9	1	Healthy	-89.29791237	43.04306976
1032	Fra pen	Fraxinus pennsylvanica	green ash	10	1	Poor	-89.29800102	43.04300422
1033	Fra pen	Fraxinus pennsylvanica	green ash	8	1	Poor	-89.29798155	43.04300213
1034	Fra pen	Fraxinus pennsylvanica	green ash	8	1	Poor	-89.29796781	43.04299788
1035	Ace neg	Acer negundo	box elder	7	1	Healthy	-89.29799464	43.0429902
1036	Pru ser	Prunus serotina	black cherry	9	1	Healthy	-89.29799108	43.04296074
1037	Ace neg	Acer negundo	box elder	14	1	Healthy	-89.29804322	43.04300411
1038	Fra pen	Fraxinus pennsylvanica	green ash	11	1	Poor	-89.29800106	43.04287008
1039	Pru ser	Prunus serotina	black cherry	24	1	Healthy	-89.29808464	43.04290329
1040	Pru ser	Prunus serotina	black cherry	7	1	Healthy	-89.29813843	43.04295981
1041	Pru ser	Prunus serotina	black cherry	9	1	Healthy	-89.29809923	43.04296028
1042	Pru ser	Prunus serotina	black cherry	7	1	Healthy	-89.29809763	43.04301878
1043	Pru ser	Prunus serotina	black cherry	14	1	Healthy	-89.29813146	43.0430528
1044	Pru ser	Prunus serotina	black cherry	8	1	Healthy	-89.2981122	43.04308839
1045	Pru ser	Prunus serotina	black cherry	9	1	Healthy	-89.29818807	43.04305049
1046	Pru ser	Prunus serotina	black cherry	9	1	Healthy	-89.29819083	43.04303603
1047	Pru ser	Prunus serotina	black cherry	7	1	Healthy	-89.29820349	43.04304228
1048	Pru ser	Prunus serotina	black cherry	8	1	Healthy	-89.29826306	43.04305686
1049	Pru ser	Prunus serotina	black cherry	11	1	Healthy	-89.2982396	43.04306365
1050	Pru ser	Prunus serotina	black cherry	7	1	Healthy	-89.29828088	43.04300633
1051	Pru ser	Prunus serotina	black cherry	11	1	Healthy	-89.29824459	43.04300042
1052	Pru ser	Prunus serotina	black cherry	7	1	Healthy	-89.29825365	43.04296338
1053	Pru ser	Prunus serotina	black cherry	11	1	Healthy	-89.29834023	43.04293719
1054	Pru ser	Prunus serotina	black cherry	15	1	Healthy	-89.2983619	43.04293089
1055	Cel occ	Celtis occidentalis	hackberry	7	1	Healthy	-89.29839836	43.04292861
1056	Pru ser	Prunus serotina	black cherry	13	1	Healthy	-89.29836556	43.04302325
1057	Fra pen	Fraxinus pennsylvanica	green ash	8	1	Poor	-89.29825853	43.04302263
1058	Pru ser	Prunus serotina	black cherry	10	1	Healthy	-89.29833479	43.04305661
1059	Pru ser	Prunus serotina	black cherry	10	1	Healthy	-89.29834391	43.04307779
1060	Ace neg	Acer negundo	box elder	7	1	Healthy	-89.29840496	43.04300626
1061	Fra pen	Fraxinus pennsylvanica	green ash	7	1	Healthy	-89.29839231	43.04305844
1062	Fra pen	Fraxinus pennsylvanica	green ash	11	1	Healthy	-89.29839638	43.04306412
1063	Ace neg	Acer negundo	box elder	9	1	Healthy	-89.29841338	43.04315416
1064	Fra pen	Fraxinus pennsylvanica	green ash	18	1	Poor	-89.29847236	43.04312839
1065	Ulm ame	Ulmus americana	American elm	12	1	Healthy	-89.29850226	43.04311956
1066	Pru ser	Prunus serotina	black cherry	7	1	Healthy	-89.29853893	43.04312394
1067	Pru ser	Prunus serotina	black cherry	14	1	Healthy	-89.2985407	43.04309929
1068	Fra pen	Fraxinus pennsylvanica	green ash	14	1	Poor	-89.29863736	43.04307226
1069	Ace neg	Acer negundo	box elder	9	1	Healthy	-89.29858841	43.04308547
1070	Ace neg	Acer negundo	box elder	9	1	Poor	-89.29856235	43.04302679
1071	Cel occ	Celtis occidentalis	hackberry	8	1	Healthy	-89.29840888	43.04292128
1072	Cel occ	Celtis occidentalis	hackberry	15	1	Healthy	-89.29848161	43.04294148
1073	Fra pen	Fraxinus pennsylvanica	green ash	6	1	Poor	-89.29847376	43.0428979
1074	Ace neg	Acer negundo	box elder	8	1	Healthy	-89.29853342	43.04294402
1075	Pru ser	Prunus serotina	black cherry	16	1	Healthy	-89.29857869	43.04293374
1076	Ace neg	Acer negundo	box elder	8	1	Healthy	-89.29864799	43.04297898
1077	Pru ser	Prunus serotina	black cherry	13	1	Healthy	-89.29864196	43.04310287
1078	Fra pen	Fraxinus pennsylvanica	green ash	6	1	Poor	-89.29872569	43.04308461
1079	Pru ser	Prunus serotina	black cherry	12	1	Healthy	-89.29870954	43.04301107
1080	Que rub	Quercus rubra	northern red oak	9	1	Healthy	-89.2987176	43.0429551
1081	Que rub	Quercus rubra	northern red oak	17	1	Healthy	-89.29872398	43.04292958
1082	Fra pen	Fraxinus pennsylvanica	green ash	10	1	Poor	-89.29860893	43.0428896
1083	Fra pen	Fraxinus pennsylvanica	green ash	10	1	Poor	-89.29861139	43.0428861
1084	Pru ser	Prunus serotina	black cherry	17	1	Healthy	-89.2987644	43.04294451
1085	Ace neg	Acer negundo	box elder	6	1	Healthy	-89.29877863	43.04293812
1086	Fra pen	Fraxinus pennsylvanica	green ash	8	1	Poor	-89.29884894	43.04289119
1087	Cel occ	Celtis occidentalis	hackberry	10	1	Healthy	-89.2989137	43.0428779
1088	Que rub	Quercus rubra	northern red oak	8	1	Healthy	-89.29889111	43.04285646
1089	Fra pen	Fraxinus pennsylvanica	green ash	26	2	Poor	-89.29893391	43.04291274
1090	Que rub	Quercus rubra	northern red oak	11	1	Healthy	-89.29900025	43.04291542
1091	Fra pen	Fraxinus pennsylvanica	green ash	17	1	Poor	-89.29901151	43.04290822
1092	Ulm ame	Ulmus americana	American elm	8	1	Healthy	-89.29896233	43.04295804
1093	Pru ser	Prunus serotina	black cherry	7	1	Healthy	-89.29892911	43.04307186
1094	Ulm ame	Ulmus americana	American elm	15	1	Healthy	-89.29915413	43.04296118
1095	Fra pen	Fraxinus pennsylvanica	green ash	17	1	Poor	-89.29912605	43.04291923
1096	Car ova	Carya ovata	shagbark hickory	7	1	Healthy	-89.2990692	43.04289166
1097	Car ova	Carya ovata	shagbark hickory	7	1	Healthy	-89.29909614	43.04288686
1098	Car ova	Carya ovata	shagbark hickory	6	1	Healthy	-89.2993351	43.04295334
1099	Ace neg	Acer negundo	box elder	10	1	Healthy	-89.29937182	43.04293661
1100	Fra pen	Fraxinus pennsylvanica	green ash	17	1	Poor	-89.29929565	43.04294071
1101	Fra pen	Fraxinus pennsylvanica	green ash	16	1	Poor	-89.29933769	43.04291825

1102	Que rub	Quercus rubra	northern red oak	12	1	Healthy	-89.29933197	43.04290674
1103	Cel occ	Celtis occidentalis	hackberry	6	1	Healthy	-89.29941385	43.04300243
1104	Car ova	Carya ovata	shagbark hickory	7	1	Healthy	-89.29945934	43.0430215
1105	Fra pen	Fraxinus pennsylvanica	green ash	52	2	Poor	-89.29954945	43.04294177
1106	Ace neg	Acer negundo	box elder	7	1	Healthy	-89.29958347	43.04286779
1107	Fra pen	Fraxinus pennsylvanica	green ash	12	1	Poor	-89.29959426	43.0428597
1108	Fra pen	Fraxinus pennsylvanica	green ash	12	1	Poor	-89.29958203	43.04284808
1109	Ace neg	Acer negundo	box elder	8	1	Healthy	-89.2995584	43.04295301
1110	Que mac	Quercus macrocarpa	bur oak	24	1	Healthy	-89.29745658	43.04303267
1111	Que mac	Quercus macrocarpa	bur oak	27	1	Healthy	-89.29737974	43.04296624
1112	Que mac	Quercus macrocarpa	bur oak	38	1	Healthy	-89.29743823	43.042877
1113	Que mac	Quercus macrocarpa	bur oak	22	1	Fair	-89.29747846	43.042899
1114	Que mac	Quercus macrocarpa	bur oak	44	2	Healthy	-89.29752001	43.04291162
1115	Que mac	Quercus macrocarpa	bur oak	25	1	Healthy	-89.29760363	43.04302278
1116	Que mac	Quercus macrocarpa	bur oak	54	2	Healthy	-89.29785612	43.04308742
1117	Que mac	Quercus macrocarpa	bur oak	16	1	Fair	-89.29883078	43.04306674
1118	Que mac	Quercus macrocarpa	bur oak	27	1	Healthy	-89.29904662	43.04297673
1119	Que mac	Quercus macrocarpa	bur oak	25	1	Healthy	-89.29899008	43.04300333
1120	Que mac	Quercus macrocarpa	bur oak	15	1	Poor	-89.29894164	43.04297069
1121	Que mac	Quercus macrocarpa	bur oak	24	1	Fair	-89.29891193	43.04301508
1122	Que mac	Quercus macrocarpa	bur oak	28	1	Fair	-89.29888904	43.04303112
1123	Que mac	Quercus macrocarpa	bur oak	26	1	Healthy	-89.2989645	43.04306175
1124	Que mac	Quercus macrocarpa	bur oak	35	1	Healthy	-89.29907081	43.04302624
1125	Que mac	Quercus macrocarpa	bur oak	31	1	Fair	-89.29920045	43.04294514
1126	Que mac	Quercus macrocarpa	bur oak	21	1	Poor	-89.29920137	43.04312373
1127	Que mac	Quercus macrocarpa	bur oak	26	1	Healthy	-89.2992713	43.04317029
1128	Que mac	Quercus macrocarpa	bur oak	28	1	Poor	-89.2992323	43.04309244
1129	Que mac	Quercus macrocarpa	bur oak	20	1	Healthy	-89.2993223	43.04315355
1130	Que mac	Quercus macrocarpa	bur oak	23	1	Healthy	-89.29929522	43.0429775
1131	Que mac	Quercus macrocarpa	bur oak	27	1	Fair	-89.2994652	43.04309394
1132	Que mac	Quercus macrocarpa	bur oak	7	1	Fair	-89.29953032	43.04291753




Ruedeusch Development & Construction
4800 Voges Road Tree Survey
March 15, 2021

Attachment 5 | Historic Aerial Imagery



© OpenStreetMap (and) contributors, CC-BY-SA

 Study Area (29.11 ac)

0 100 200
Ft

Heartland
ECOLOGICAL GROUP INC

**Appendix: 1937
Orthophoto**

4800 Voges Road
Project #20200315
T7N, R10E, S27
C Madison, Dane Co, WI

1937 Orthophoto
Data: WI St. Cart. Office 6/1/2020



Ruedeusch Development & Construction
4800 Voges Road Tree Survey
March 15, 2021

Attachment 6 | Photolog



Photo #1 Large oaks, view from farm field to the north



Photo #2 Diseased/unhealthy bur oak



Photo #3 Diseased/unhealthy bur oak



Photo #4 Diseased/unhealthy bur oak



Photo #5 Bur oak trees in open portion of the woodland



Photo #6 Photo representative of the woodland as a whole



Photo #7 Ash tree killed by emerald ash borer



Photo #8 Large ash tree killed by emerald ash borer



Photo #9 Photo representative of the woodland as a whole



Photo #10 Photo representative of the woodland as a whole



Photo #11 Photo representative of the woodland as a whole



Photo #12 Photo representative of the woodland as a whole

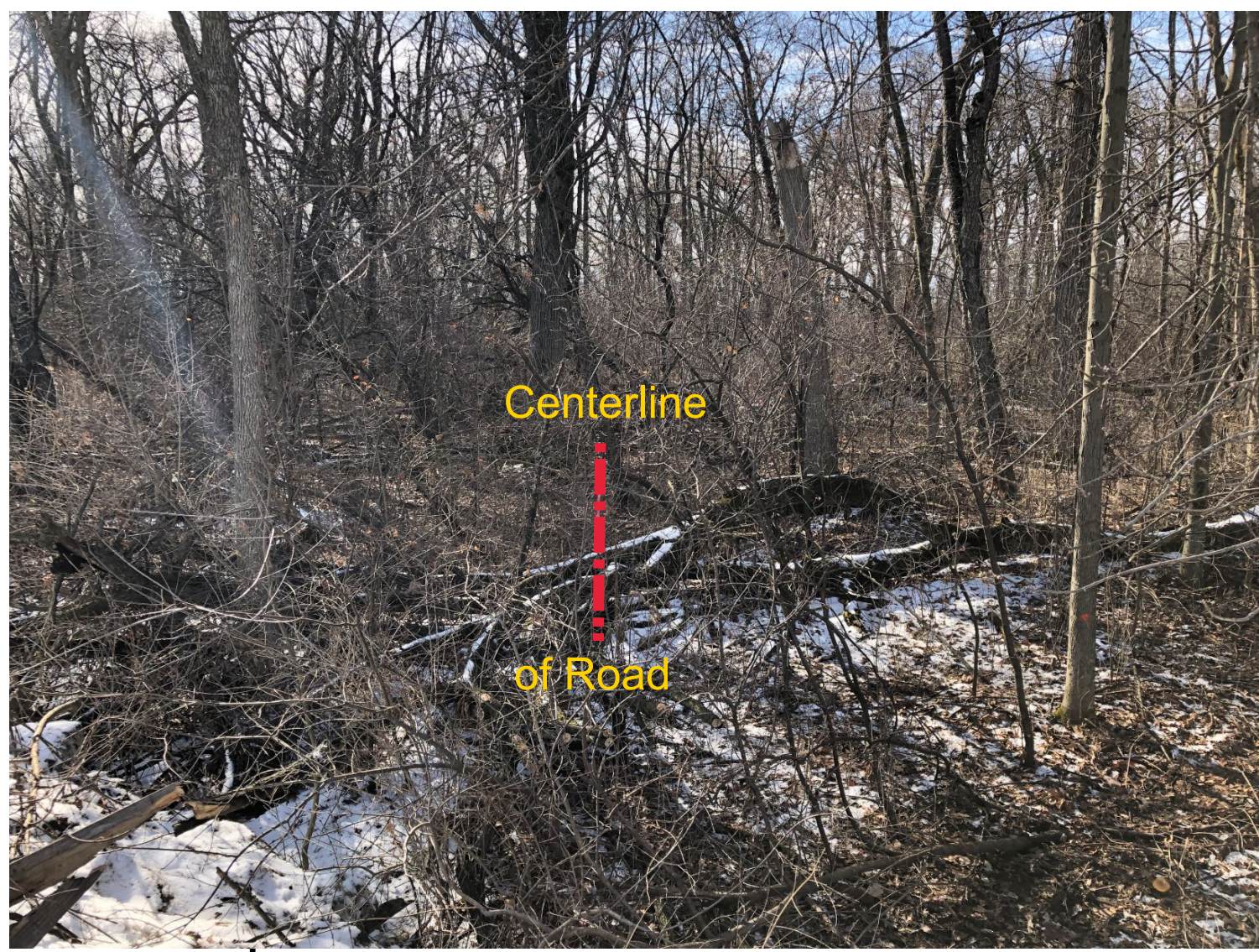


Photo 2 - Galleon Run Looking South

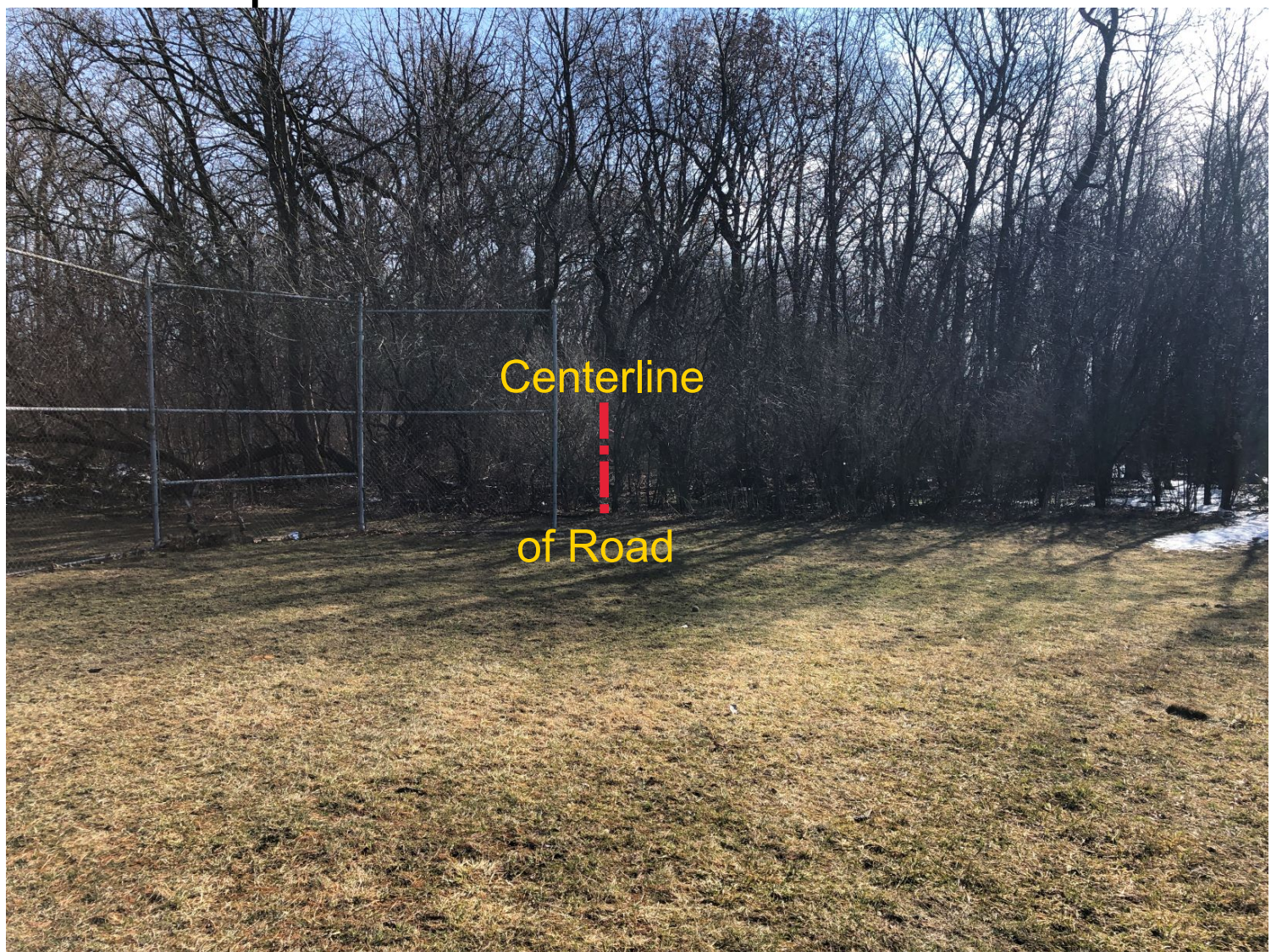


Photo 3 - New East / West Road Looking East



Photo 1 - New Galleon Run Looking North

N
 1 SITE MAP - OVERLAY
 M1.1 SCALE 1" = 80'

WYOMING PROJECT
 4800 VOGES ROAD
 MADISON, WISCONSIN 53718

NO.	REVISION	DATE


SHEET TITLE:
 SITE MAP OVERLAY

JOB NUMBER:	19032
DESIGNED BY:	TC
DRAWN BY:	TC
CHECKED BY:	CHK
DATE:	03.17.2021
SHEET NO:	

M.I.I



Centerline of Galleon Run extension. 66' total ROW width.



Centerline of Galleon Run road extension. 66' total TOW width.



Centerline of new East /
West Road. 60' total ROW