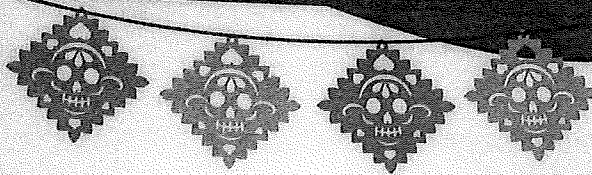


# LUNCH MENU

SERVED BETWEEN 11:00 AM TO 3:00 PM  
MONDAY THROUGH FRIDAY



## CHIMICHANGA LUNCH

6.99

(1) Fried flour tortilla filled with beef or chicken, topped with cheese sauce. Served with guacamole salad, rice or beans.

## ENCHILADA LUNCH

6.99

(2) Soft corn tortillas stuffed with your choice of cheese, ground beef, shredded beef, shredded chicken or beans. Served with rice and beans.

## QUESADILLA LUNCH

6.99

8-Inch Quesadilla of your choice of cheese, ground beef, shredded beef, shredded chicken or beans. Served with rice and beans.

## TAMAL LUNCH

6.99

Corn dough filled with shredded chicken and green salsa topped with red mild sauce and melted cheese. Served with rice and beans.

## TOSTADA LUNCH

6.99

One tostada of your choice of ground beef, shredded beef or shredded chicken with beans topped with queso fresco, lettuce, tomatoes and sourcream. Served with rice and beans.

## BURRITO LUNCH

6.99

8-inch burrito of your choice of cheese, ground beef, shredded beef, shredded chicken or beans. Served with rice and beans.

## BURRITO FRITO LUNCH

6.99

Fried burrito filled with shredded beef or chicken. Served with rice and refried beans.

## BURRITO CHOCHO LUNCH

7.99

Flour tortilla filled with grilled chicken and topped with cheese sauce. Served with pico de gallo, rice and beans.

## BURRITO CHEESE STEAK LUNCH

7.99

Burrito stuffed with tender slices of steak cooked with onions and tomatoes, topped with cheese sauce. Served with rice and refried beans.

## BURRITO GRANDE LUNCH

7.99

Flour tortilla filled with steak or chicken, rice, refried beans, lettuce, sour cream and pico de gallo. Topped with cheese sauce and ranchera sauce.

## BURRITO ROQUETA LUNCH

7.99

Flour tortilla filled with grilled chicken or pork. Topped with cheese sauce, tomatillo sauce and pico de gallo. Served with rice and refried beans.

## FAJITA BURRITO LUNCH

8.99

Burrito stuffed with tender slices of steak or chicken cooked with onions, tomatoes and bell peppers, topped with cheese sauce. Served with rice and beans.

## TACO LUNCH

7.99

Two tacos of your choice of ground beef, shredded beef or shredded chicken. Corn or flour tortilla or hardshell served with rice and beans.

## SANTA FE LUNCH

7.99

Grilled chicken breast with onions, tomatoes, bell peppers, mushrooms and cheese sauce. Served with rice, refried beans and corn or flour tortillas.

## FAJITA QUESADILLA LUNCH

7.99

Flour tortilla filled with chicken or steak cooked with cheese, bell peppers, onions and tomatoes. Served with rice and refried beans, lettuce and guacamole salad.

## CHORIPOLLO LUNCH

7.99

Grilled seasoned chicken breast topped with chorizo and cheese sauce. Served with rice, refried beans and corn or flour tortillas.

## POLLO ASADO LUNCH

7.99

Grilled chicken breast topped with cooked onion. Topped with cheese sauce. Served with rice, guacamole and corn or flour tortillas.

## HUEVOS CON CHORIZO

7.99

Two scrambled eggs topped with chorizo. Served with rice, refried beans and corn or flour tortillas.

## HUEVOS RANCHEROS

7.99

Two eggs on two corn tortillas topped with ranchera sauce and mozzarella cheese served with rice and beans.

## LUNCH FAJITA

Lunch size portion choice of meat cooked with onions, bell peppers and tomatoes. Served with rice, refried beans and corn or flour tortillas.

## STEAK OR CHICKEN

8.99

## MIXED (steak and chicken)

8.99

## SHRIMP

10.99

## TEXANA (steak, chicken and shrimp)

10.99

# Add Soda

# \$1.00

Two refills

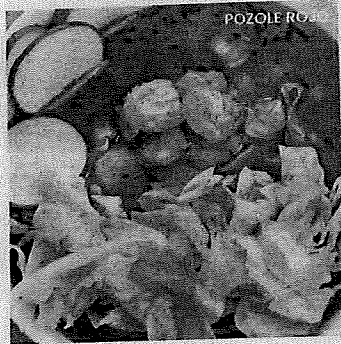
## PARRILLADA

Meats come cooked on top of a hot plate. Includes steak, chicken, chorizo, ribs and shrimp. Include a dinner plate with rice, beans and crema salad with your choice of tortillas (flour or corn).



ONE PERSON  
TWO PEOPLE

24.95  
44.95



## SOUPS WEEKEND ONLY

### MENUDO

Mexican soup also known as pancita made with beef stomach (tripe) in broth with a red chili pepper base. Choice of flour or corn tortillas.

9.99



### ROJO

pork meat, red chiles and lots of hominy corn. It comes with lettuce, onions, oregano, red chile de arbol and radish.

10.25

### CHICKEN SOUP

Chunks of chicken with rice, pico de gallo and avocado. Choice of flour or corn tortillas.

14.99

### CALDO DE CAMARON

Made with shrimp and fish talapia, with potatoes, carrots and celery. Served with tortillas or bread.

15.99

### SOPA DE MARISCOS

Made with shrimp, seafood mix, fish talapia, with potatoes, carrots and celery. Served with tortillas or bread.

12.99



## MILANESA CON PAPAS

Choice of flour or corn tortillas. Breaded steak or chicken with french fries, rice and crema salad.

19.50

## T-BONE ASADO

A tender 14 oz seasoned T-bone steak, with cactus, grilled onions, grilled jalapeño, guacamole salad, rice, beans and your choice of flour or corn tortillas.

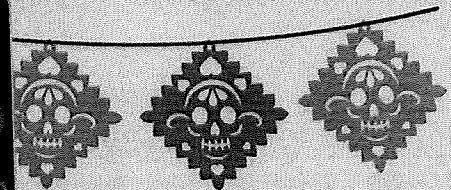
## FAJITAS

Our fajita dinner comes with your choice of meat cooked with onions, tomatoes and peppers. Served with crema salad, rice and beans. Your choice of tortillas (flour or corn).

	REGULAR	DOUBLE
STEAK OR CHICKEN	14.99	26.99
SHRIMP	17.99	32.99
MIXED (Steak and Chicken)	15.99	28.99
TEXANA (Steak, Chicken and Shrimp)	18.50	34.25
RANCHERA (Steak, Chicken, Shrimp and Bacon)	19.50	35.50
HOUSE SPECIAL (Steak, Chicken, Shrimp and Pork)	19.50	35.50
VEGETARIAN (VegI blend mix)	11.95	22.00

	REGULAR	DOUBLE
OSCAR SPECIAL	20.99	39.99

We use a special recipe to cook steak, chicken, shrimp and chorizo. Served on top of a quesadilla with sauteed onions, bell peppers, rice and refried beans. Garnished with lettuce, sour cream and guacamole salad. Your choice of tortillas (flour or corn).





## TACO DINNER PLATE

3 Tacos served with rice and beans. Choice of hard shell, corn or flour tortilla.

American style (Cheese, lettuce and tomatoes)

Mexican style (Cilantro and onions)

CARNITAS	12.99	CAMPECHANO	13.99
CHORIZO	12.99	FISH TILAPIA	14.99
STEAK	12.99	SHRIMP <i>Camaron</i>	15.99
GRILLED CHICKEN	12.99		
LENGUA-TONGUE	14.99	MEXICAN-AMERICAN	0.50
		STYLE PER TACO	



## MEXICAN ENCHILADAS

**ENCHILADAS DE MOLE** 11.99

Three chicken enchiladas topped with mole sauce, queso fresco, onions, sour cream and sesame seeds. Served with rice and beans.

**ENCHILADAS SUIZAS** 12.99

two chicken and two beef enchilada topped with cheese, green mild sauce, sour cream and pinch of cilantro on top. Served with rice and beans.

**ENCHILADAS SUPREME** 12.99

One chicken, one beef, one cheese and one bean enchilada topped with ranchera sauce, lettuce, sour cream, guacamole, tomatoes. Served with rice and beans.

**ENCHILADAS VERDES** 12.50

Three cheese enchiladas topped with green sauce and pork (carnitas). Served with rice and beans.

**ENCHILADAS RANCHERAS** 12.50

Three cheese enchiladas topped with steak and ranchera sauce. Served with rice and beans.



## COMBINATIONS

All combinations are served with rice and refried beans.

**OSCAR'S COMBINATION** 12.99

- 1 Burrito 8-Inch flour tortilla
- 1 Tamal
- 1 Taco

**AZTECA COMBINATION** 13.99

- 1 Chile Poblano
- 1 Tamal
- 1 Enchilada

**ADD GUACAMOLE SALAD** 1.50

### OPTIONS

- GROUND BEEF
- SHREDDED BEEF
- SHREDDED CHICKEN
- BEANS
- CHEESE
- SPINACH
- MUSHROOMS
- CHORIZO
- STEAK
- GRILLED CHICKEN
- CARNITAS

### SAUCES

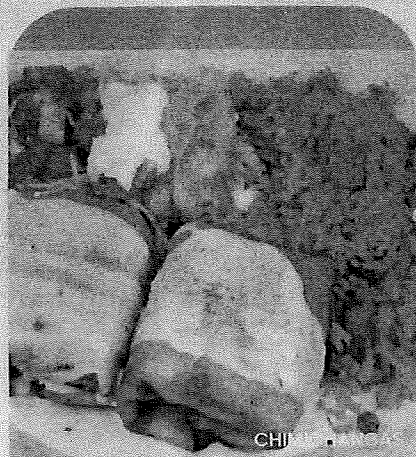
- RANCHERA SAUCE
- MOLE SAUCE
- GREEN SAUCE
- RED MILD SAUCE

## DESSERTS

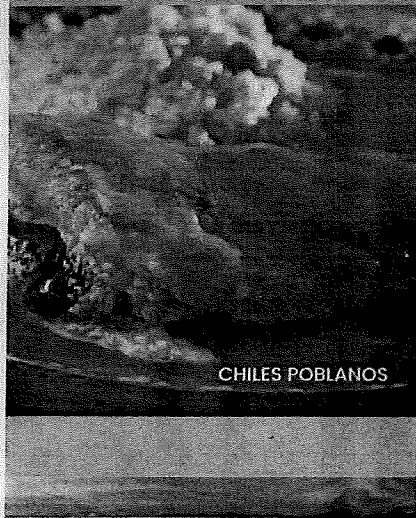
- TRES LECHES 4.50
- FLAN 4.99
- FRIED ICE 5.50
- CREAM

*Churros 2.99 each  
Plain or Cajeta*

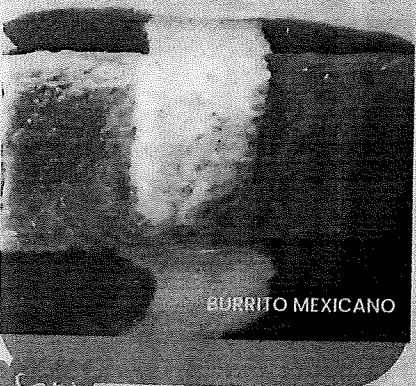




CHI



CHILES POBLANOS



BURRITO MEXICANO

## HOUSE SPECIALS

### CHIMICHANGAS

Two deep fried flour tortillas filled with your choice of meat. Topped with melted cheese sauce, served with rice or refried beans and guacamole salad.

11.99

### STEAK OR GRILLED CHICKEN SHRIMP

12.99

15.50

### QUESADILLA GRANDE

10-inch tortilla filled with steak or chicken,bacon,tomatoes onions and mushrooms, topped with melted cheese sauce and ranchera sauce. Served with rice and salad.

13.45

### FAJITA QUESADILLA

10-inch Flour tortilla filled with cheese, your choice of meat cooked with bell peppers, onion and tomatoes, served with rice, refried beans and guacamole salad.

13.50

### STEAK OR CHICKEN

15.49

### SHRIMP (10 PCS)

### CHILES POBLANOS

Two poblano peppers stuffed with cheese dipped in egg butter and then fried, topped with ranchera sauce and melted mozzarella cheese and pinch of cilantro on top, Served with rice, beans, guacamole salad and corn or flour tortillas.

15.50

### TAQUITOS MEXICANOS

11.25

Four rolled deep fried corn tortillas, two chicken and two shredded beef. Topped with sour cream, guacamole and hot molcahete sauce. Served with lettuce and pico de gallo.

## HOUSE BURRITOS

### BURRITO CHEESE STEAK

Two burritos stuffed with tender steak cooked with onions and tomatoes topped with melted cheese, served with guacamole salad and rice or refried beans.

13.50

### BURRITO ROQUETA

Two flour tortillas filled with grilled chicken or pork, topped with melted cheese sauce, green sauce and pico de gallo, served with rice and refried beans.

12.50

### BURRITOS TEXANOS

Two burritos filled with grilled steak, rice and refried beans topped with melted cheese sauce, served with guacamole salad.

12.99

### FAJITA BURRITO

Two burritos, stuffed with your choice of meat. Cooked with onions, tomatoes, bell peppers and topped with melted cheese sauce, served with rice and refried beans.

12.99

### STEAK OR CHICKEN

16.50

### SHRIMP

### BURRITO DELUXE

Two burritos, one chicken and refried beans and one beef and refried beans topped with ranchera sauce, lettuce, sour cream and tomatoes.

11.99

### BURRITOS CHOCHOS

Two flour tortillas filled with grilled chicken topped with melted cheese sauce, served with pico de gallo, rice and refried beans.

12.50

### BURRITO MEXICANO

(12 inch flour tortilla filled with chicken or steak, grilled peppers, onions, tomatoes rice and refried beans, topped with melted cheese sauce, green sauce and red sauce.

12.99

### BURRITO GRANDE

12-inch flour tortilla filled with steak or chicken, rice, refried beans. Smothered with melted cheese sauce and ranchera sauce. Topped with lettuce sour cream and pico de gallo.

12.99

### BURRITO CAMPECHANO

12 - inch flour tortilla filled with steak or chicken and chorizo, rice and beans. Smothered with melted cheese sauce and ranchera sauce. Topped with lettuce, guacamole, sour cream and pico de gallo.

13.45

# BEVERAGES

## MEXICAN BEVERAGE

HORCHATA	2.99
JAMAICA	
TAMARINDO	
COCA COLA MEXICANA	
JARRITOS (Flavors)	
RED BULL	4.00

## FOUNTAIN DRINKS

PEPSI PRODUCTS	3.00
----------------	------

## BEERS

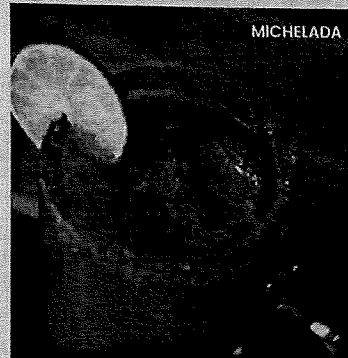
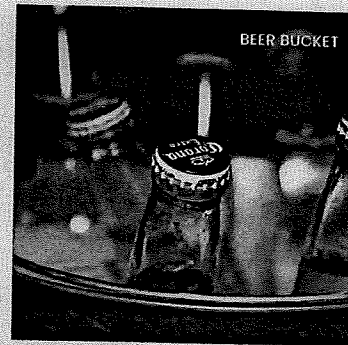
BEER DOMESTIC	4.00
<i>Budweiser - Bud Light - Miller Lite</i>	
<i>Coors Light - Michelob Ultra</i>	
<i>Spotted Cow</i>	

BEER IMPORTED	4.75
---------------	------

*Corona - Corona Light - Corona Familiar*  
*Tecate - Tecate Light - Negra Modelo*  
*Modelo Especial - XX Lager - XX Ambar*  
*Bohemia Victoria - Pacifico - Heineken*

NON ALCOHOLIC BEER	4.00
Heineken 0.0	

BUCKET OF SIX ANY BOTTLED BEER	22.00
--------------------------------	-------



## MICHELADA

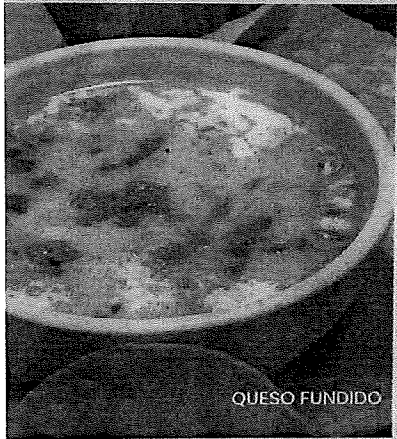
REGULAR	8.99
DOUBLE	15.99



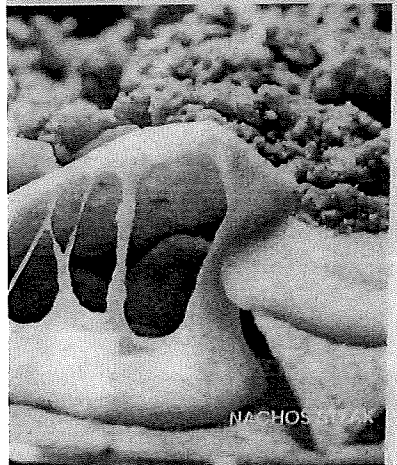
**SCAN & ORDER  
 ONLINE**  
[www.taquerlaguzman.com](http://www.taquerlaguzman.com)



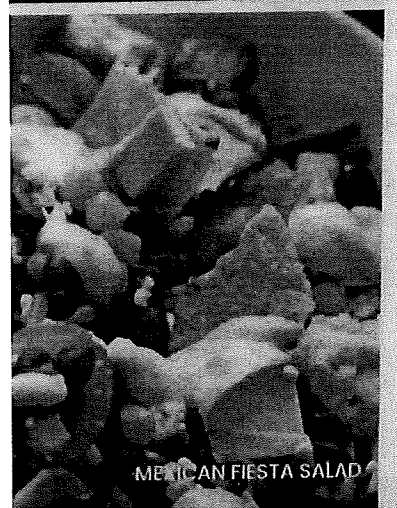
GUACAMOLE DIP



QUESO FUNDIDO



NACHOS



MEXICAN FIESTA SALAD

## DIPS

BEAN DIP	3.99
CHEESE DIP	4.00
GUACAMOLE DIP	4.00
AVOCADO SLICES	1.99
SHREDDED CHEESE	1.00
SOUR CREAM	0.79
PICO DE GALLO	1.00
JALAPEÑO PEPPERS	1.00
CHILES TOREADOS	1.99
QUESO FUNDIDO	7.99
Corn or flour tortilla.	

## SIDES

REFRIED BEANS	2.25
MEXICAN RICE	2.25
TOSTADA DE CAMARÓN	4.25
Open face hard shell tortilla with pico de gallo, lettuce and avocado	
TAMAL	2.75
FLOUR TORTILLAS (3)	0.99
CORN TORTILLAS (5)	0.99
CHILE POBLANO	5.50
COOKED SHRIMP (6)	6.25
(12)	12.00

## NACHOS

Open face hard shell tortilla with refried beans, cheese and meat.  
GROUND BEEF OR SHREDDED CHICKEN

8.35

## NACHOS SUPREME

Nachos with melted cheese. Your choice of meat and refried beans. Topped with lettuce, tomatoes, sour cream and guacamole

GROUND BEEF	11.99	STEAK	12.99
SHREDDED BEEF	11.99	GRILLED CHICKEN	12.99
SHREDDED CHICKEN	11.99		

## NACHOS FAJITAS

Nachos with melted cheese. Your choice of meat and refried beans. Topped with lettuce, tomatoes, sour cream and guacamole

SHRIMP (14 pcs)	16.50	STEAK OR GRILLED CHICKEN	16.50
-----------------	-------	--------------------------	-------

## SALADS LOW FAT SIDE

### TACO SALAD

Crispy flour tortilla bowl filled with chicken or beef, refried beans, rice, lettuce, sourcream, guacamole, tomatoes and cheese.

9.99

### FAJITA TACO SALAD

Crispy flour tortilla bowl filled with steak, refried beans, rice, lettuce, sour cream, guacamole and shredded cheese.

STEAK OR CHICKEN  
SHRIMP

11.99

13.99

### HABANERO GRILLED SALAD

Spicy flavor salad. Grilled habanero, onions, pineapple and fresh strawberries on a bed of lettuce and spinach.

STEAK OR CHICKEN  
SHRIMP

11.99

13.99

### VEGGIE AND LIGHT SIDE

#### MEXICAN FIESTA SALAD

This salad is a party!. avocado, black beans, corn, pico de gallo and queso fresco on a bed of lettuce and spinach. Top with sour cream and tortilla strips.

STEAK OR CHICKEN  
SHRIMP (10 pcs)

13.99  
15.99

consumption of raw or under cooked food items on the menu may pose a health risk to highly susceptible people such as the elderly, children under 12, pregnant women and immunocompromised individuals. CAUTION: ALL PLATES ARE HOT! FOOD ALLERGY. Please ask your server about ingredients.



MOLCAJETE



TRES AMIGOS

## CHEF'S SPECIALS

### CHILE COLORADO

Steak with red chile sauce, Served with rice refried beans, guacamole salad and tortillas.

13.25

### MOLE RANCHERO

Grilled chicken with mole sauce, served with rice, beans and corn or flour tortillas.

12.25

### CARNITAS

Shredded pork served with rice, beans guacamole salad, jalapeno pepper and corn or flour tortillas.

12.95

### POLLO NORTEÑO

Two grilled seasoned chicken breast with six sauteed shrimp and onion topped with pineapple slices and cherries drizzled with melted cheese Served with rice refried beans, guacamole salad and corn or flour tortillas.

15.25

### POLLO ASADO

Grilled seasoned chicken breast with sauteed onions topped with cheese sauce, served with rice, guacamole salad and corn or flour tortillas.

13.25

### POLLO LOCO

Grilled seasoned chicken breast with raw onions topped with cheese and enchilada sauce. Served with rice, guacamole salad and corn or flour tortillas.

13.25

### POLLO SANTA FE

Grilled seasoned chicken breast cooked with onions tomatoes, bell peppers and mushrooms topped with cheese sauce, with rice, refried beans and corn or flour tortillas.

13.99

### ARROZ CON POLLO O CAMARÓN

Your choice of meat with grilled onions, bell peppers and mushrooms. Served on a bed of rice with cream salad. Topped with cheese dip.

### CHICKEN SHRIMP (14 PCS)

14.25  
19.45

### CHORIPOLLO

Grilled seasoned chicken breast topped with chorizo and cheese sauce. Served with rice, refried beans, and corn or flour tortillas.

13.75

### CARNE ASADA

Sirloin knuckle steak served with guacamole salad, cactus, grilled onions, grilled jalapeño, rice, refried beans and corn or flour tortillas.

14.99

### BISTEK A LA TAMPIQUEÑA

Sirloin knuckle steak served with rice, refried beans, guacamole salad, one cheese enchilada, orange slices and corn or flour tortillas.

14.95

### BISTEK NORTEÑO

Ribeye steak with six sauteed shrimp and onion topped with pineapple slices and cherries, drizzled with melted cheese, served with rice, refried beans, guacamole salad and corn or flour tortilla.

14.99

### TRES AMIGOS

Grilled chicken breast with steak and shrimp topped with onion pineapple slices and cherries, drizzled with cheese sauce. Served with rice and fried beans, guacamole salad and corn or flour tortillas.

21.50

### SHRIMP COCKTAIL

12 cooked shrimp in a homemade cocktail juice and topped with avocado, cilantro and onions.

15.50

### MOLCAJETE

Served in a hot stone. Chicken, steak, shrimp and chorizo in our special sauce. Topped with shredded cheese, avocado, pico de gallo, jalapeño and cactus. Served with rice, beans, guacamole salad and corn or flour tortillas.

19.50

### CAMARONES AL MOJO DE AJO

14 sauteed shrimp in garlic, butter and tender onions, served with rice, beans, french fries, guacamole salad and corn or flour tortillas.

21.50

### CAMARONES A LA DIABLA

14 cajun spiced shrimp served with guacamole salad, french fries and corn or flour tortilla.

18.99



CHORIPOLLO



SHRIMP COCKTAIL

Warning: The consumption of raw or under cooked food items on the menu may pose a health risk to highly susceptible people such as the elderly, children under age of 4, pregnant woman and immuno-compromised individuals. CAUTION: ALL PLATES ARE HOT! FOOD ALLERGY. Please ask your server about ingredients.











SECTION 05100 - CONCRETE

5110 - FORMWORK

5111 - FORMWORK

5112 - FORMWORK

5113 - FORMWORK

5114 - FORMWORK

5115 - FORMWORK

5116 - FORMWORK

5117 - FORMWORK

5118 - FORMWORK

5119 - FORMWORK

5120 - FORMWORK

5121 - FORMWORK

5122 - FORMWORK

5123 - FORMWORK

5124 - FORMWORK

5125 - FORMWORK

5126 - FORMWORK

5127 - FORMWORK

5128 - FORMWORK

5129 - FORMWORK

5130 - FORMWORK

5131 - FORMWORK

5132 - FORMWORK

5133 - FORMWORK

5134 - FORMWORK

5135 - FORMWORK

5136 - FORMWORK

5137 - FORMWORK

5138 - FORMWORK

5139 - FORMWORK

5140 - FORMWORK

5141 - FORMWORK

5142 - FORMWORK

5143 - FORMWORK

5144 - FORMWORK

5145 - FORMWORK

5146 - FORMWORK

5147 - FORMWORK

5148 - FORMWORK

5149 - FORMWORK

5150 - FORMWORK

5151 - FORMWORK

5152 - FORMWORK

5153 - FORMWORK

5154 - FORMWORK

SECTION 05200 - METALS

5210 - IRON AND STEEL

5211 - IRON AND STEEL

5212 - IRON AND STEEL

5213 - IRON AND STEEL

5214 - IRON AND STEEL

5215 - IRON AND STEEL

5216 - IRON AND STEEL

5217 - IRON AND STEEL

5218 - IRON AND STEEL

5219 - IRON AND STEEL

5220 - IRON AND STEEL

5221 - IRON AND STEEL

5222 - IRON AND STEEL

5223 - IRON AND STEEL

5224 - IRON AND STEEL

5225 - IRON AND STEEL

5226 - IRON AND STEEL

5227 - IRON AND STEEL

5228 - IRON AND STEEL

5229 - IRON AND STEEL

5230 - IRON AND STEEL

5231 - IRON AND STEEL

5232 - IRON AND STEEL

5233 - IRON AND STEEL

5234 - IRON AND STEEL

5235 - IRON AND STEEL

5236 - IRON AND STEEL

5237 - IRON AND STEEL

5238 - IRON AND STEEL

5239 - IRON AND STEEL

5240 - IRON AND STEEL

5241 - IRON AND STEEL

5242 - IRON AND STEEL

5243 - IRON AND STEEL

5244 - IRON AND STEEL

5245 - IRON AND STEEL

5246 - IRON AND STEEL

5247 - IRON AND STEEL

5248 - IRON AND STEEL

5249 - IRON AND STEEL

5250 - IRON AND STEEL

5251 - IRON AND STEEL

5252 - IRON AND STEEL

5253 - IRON AND STEEL

5254 - IRON AND STEEL

SECTION 05300 - PAINTS AND COATINGS

5310 - PAINTS AND COATINGS

5311 - PAINTS AND COATINGS

5312 - PAINTS AND COATINGS

5313 - PAINTS AND COATINGS

5314 - PAINTS AND COATINGS

5315 - PAINTS AND COATINGS

5316 - PAINTS AND COATINGS

5317 - PAINTS AND COATINGS

5318 - PAINTS AND COATINGS

5319 - PAINTS AND COATINGS

5320 - PAINTS AND COATINGS

5321 - PAINTS AND COATINGS

5322 - PAINTS AND COATINGS

5323 - PAINTS AND COATINGS

5324 - PAINTS AND COATINGS

5325 - PAINTS AND COATINGS

5326 - PAINTS AND COATINGS

5327 - PAINTS AND COATINGS

5328 - PAINTS AND COATINGS

5329 - PAINTS AND COATINGS

5330 - PAINTS AND COATINGS

5331 - PAINTS AND COATINGS

5332 - PAINTS AND COATINGS

5333 - PAINTS AND COATINGS

5334 - PAINTS AND COATINGS

5335 - PAINTS AND COATINGS

5336 - PAINTS AND COATINGS

5337 - PAINTS AND COATINGS

5338 - PAINTS AND COATINGS

5339 - PAINTS AND COATINGS

5340 - PAINTS AND COATINGS

5341 - PAINTS AND COATINGS

5342 - PAINTS AND COATINGS

5343 - PAINTS AND COATINGS

5344 - PAINTS AND COATINGS

5345 - PAINTS AND COATINGS

5346 - PAINTS AND COATINGS

5347 - PAINTS AND COATINGS

5348 - PAINTS AND COATINGS

5349 - PAINTS AND COATINGS

5350 - PAINTS AND COATINGS

5351 - PAINTS AND COATINGS

5352 - PAINTS AND COATINGS

5353 - PAINTS AND COATINGS

5354 - PAINTS AND COATINGS

SECTION 05400 - MASONRY

5410 - MASONRY

5411 - MASONRY

5412 - MASONRY

5413 - MASONRY

5414 - MASONRY

5415 - MASONRY

5416 - MASONRY

5417 - MASONRY

5418 - MASONRY

5419 - MASONRY

5420 - MASONRY

5421 - MASONRY

5422 - MASONRY

5423 - MASONRY

5424 - MASONRY

5425 - MASONRY

5426 - MASONRY

5427 - MASONRY

5428 - MASONRY

5429 - MASONRY

5430 - MASONRY

5431 - MASONRY

5432 - MASONRY

5433 - MASONRY

5434 - MASONRY

5435 - MASONRY

5436 - MASONRY

5437 - MASONRY

5438 - MASONRY

5439 - MASONRY

5440 - MASONRY

5441 - MASONRY

5442 - MASONRY

5443 - MASONRY

5444 - MASONRY

5445 - MASONRY

5446 - MASONRY

5447 - MASONRY

5448 - MASONRY

5449 - MASONRY

5450 - MASONRY

5451 - MASONRY

5452 - MASONRY

5453 - MASONRY

5454 - MASONRY

SECTION 05500 - WOODWORKING

5510 - WOODWORKING

5511 - WOODWORKING

5512 - WOODWORKING

5513 - WOODWORKING

5514 - WOODWORKING

5515 - WOODWORKING

5516 - WOODWORKING

5517 - WOODWORKING

5518 - WOODWORKING

5519 - WOODWORKING

5520 - WOODWORKING

5521 - WOODWORKING

5522 - WOODWORKING

5523 - WOODWORKING

5524 - WOODWORKING

5525 - WOODWORKING

5526 - WOODWORKING

5527 - WOODWORKING

5528 - WOODWORKING

5529 - WOODWORKING

5530 - WOODWORKING

5531 - WOODWORKING

5532 - WOODWORKING

5533 - WOODWORKING

5534 - WOODWORKING

5535 - WOODWORKING

5536 - WOODWORKING

5537 - WOODWORKING

5538 - WOODWORKING

5539 - WOODWORKING

5540 - WOODWORKING

5541 - WOODWORKING

5542 - WOODWORKING

5543 - WOODWORKING

5544 - WOODWORKING

5545 - WOODWORKING

5546 - W

















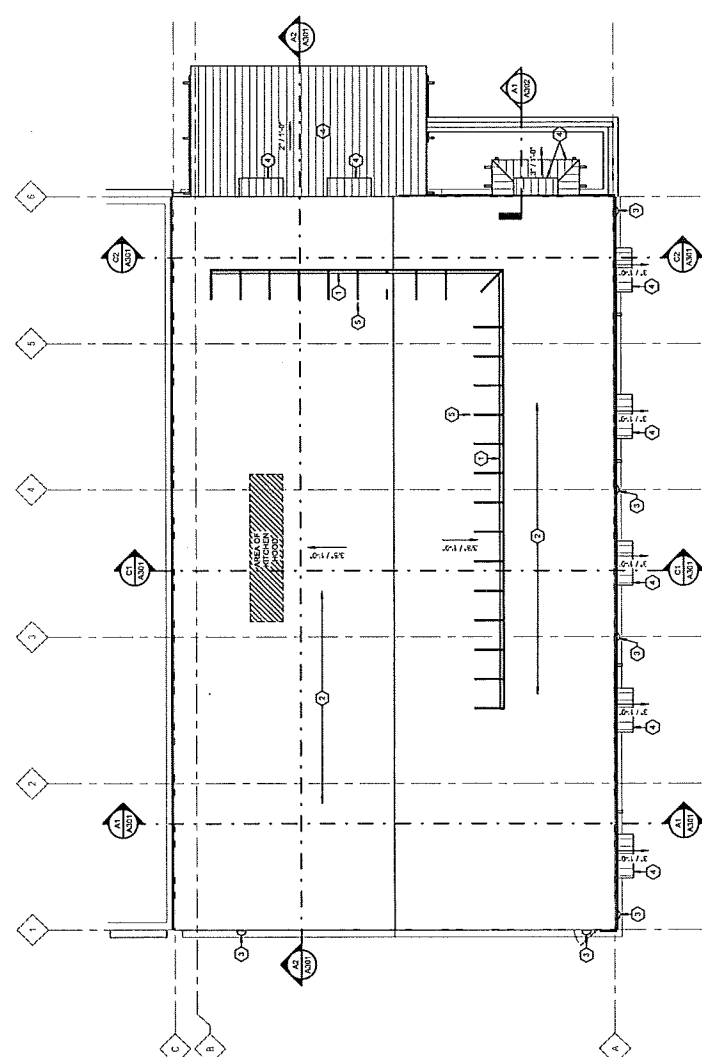


**ROOF PLAN GENERAL NOTES:**

- A. EXTERIOR DIMENSIONS ARE FROM ORIGIN TO GRIDLINE OR TO CENTER OF FOUNDATION WALL UNLESS NOTED OTHERWISE. ALL DIMENSIONS SHALL BE CHECKED BY ARCHITECT WITH ANY DISCREPANCIES.
- B. DIMENSIONS ARE TO FACE OF LEAF UNLESS NOTED OTHERWISE. ALL DIMENSIONS SHALL BE CHECKED BY ARCHITECT WITH ANY DISCREPANCIES.
- C. MECHANICAL CHASE EXTERIOR WALLS SHALL BE CONTIGUOUS TO BOTTOM OF INTENT CEILING UNLESS NOTED OTHERWISE. ALL DIMENSIONS SHALL BE CHECKED BY ARCHITECT WITH ANY DISCREPANCIES.
- D. MECHANICAL CHASE EXTERIOR WALLS SHALL BE CONTIGUOUS TO BOTTOM OF INTENT CEILING UNLESS NOTED OTHERWISE. ALL DIMENSIONS SHALL BE CHECKED BY ARCHITECT WITH ANY DISCREPANCIES.
- E. MECHANICAL CHASE EXTERIOR WALLS SHALL BE CONTIGUOUS TO BOTTOM OF INTENT CEILING UNLESS NOTED OTHERWISE. ALL DIMENSIONS SHALL BE CHECKED BY ARCHITECT WITH ANY DISCREPANCIES.
- F. MECHANICAL CHASE EXTERIOR WALLS SHALL BE CONTIGUOUS TO BOTTOM OF INTENT CEILING UNLESS NOTED OTHERWISE. ALL DIMENSIONS SHALL BE CHECKED BY ARCHITECT WITH ANY DISCREPANCIES.
- G. MECHANICAL CHASE EXTERIOR WALLS SHALL BE CONTIGUOUS TO BOTTOM OF INTENT CEILING UNLESS NOTED OTHERWISE. ALL DIMENSIONS SHALL BE CHECKED BY ARCHITECT WITH ANY DISCREPANCIES.
- H. MECHANICAL CHASE EXTERIOR WALLS SHALL BE CONTIGUOUS TO BOTTOM OF INTENT CEILING UNLESS NOTED OTHERWISE. ALL DIMENSIONS SHALL BE CHECKED BY ARCHITECT WITH ANY DISCREPANCIES.
- I. MECHANICAL CHASE EXTERIOR WALLS SHALL BE CONTIGUOUS TO BOTTOM OF INTENT CEILING UNLESS NOTED OTHERWISE. ALL DIMENSIONS SHALL BE CHECKED BY ARCHITECT WITH ANY DISCREPANCIES.
- J. MECHANICAL CHASE EXTERIOR WALLS SHALL BE CONTIGUOUS TO BOTTOM OF INTENT CEILING UNLESS NOTED OTHERWISE. ALL DIMENSIONS SHALL BE CHECKED BY ARCHITECT WITH ANY DISCREPANCIES.
- K. MECHANICAL CHASE EXTERIOR WALLS SHALL BE CONTIGUOUS TO BOTTOM OF INTENT CEILING UNLESS NOTED OTHERWISE. ALL DIMENSIONS SHALL BE CHECKED BY ARCHITECT WITH ANY DISCREPANCIES.
- L. MECHANICAL CHASE EXTERIOR WALLS SHALL BE CONTIGUOUS TO BOTTOM OF INTENT CEILING UNLESS NOTED OTHERWISE. ALL DIMENSIONS SHALL BE CHECKED BY ARCHITECT WITH ANY DISCREPANCIES.
- M. MECHANICAL CHASE EXTERIOR WALLS SHALL BE CONTIGUOUS TO BOTTOM OF INTENT CEILING UNLESS NOTED OTHERWISE. ALL DIMENSIONS SHALL BE CHECKED BY ARCHITECT WITH ANY DISCREPANCIES.
- N. MECHANICAL CHASE EXTERIOR WALLS SHALL BE CONTIGUOUS TO BOTTOM OF INTENT CEILING UNLESS NOTED OTHERWISE. ALL DIMENSIONS SHALL BE CHECKED BY ARCHITECT WITH ANY DISCREPANCIES.
- O. MECHANICAL CHASE EXTERIOR WALLS SHALL BE CONTIGUOUS TO BOTTOM OF INTENT CEILING UNLESS NOTED OTHERWISE. ALL DIMENSIONS SHALL BE CHECKED BY ARCHITECT WITH ANY DISCREPANCIES.
- P. MECHANICAL CHASE EXTERIOR WALLS SHALL BE CONTIGUOUS TO BOTTOM OF INTENT CEILING UNLESS NOTED OTHERWISE. ALL DIMENSIONS SHALL BE CHECKED BY ARCHITECT WITH ANY DISCREPANCIES.
- Q. MECHANICAL CHASE EXTERIOR WALLS SHALL BE CONTIGUOUS TO BOTTOM OF INTENT CEILING UNLESS NOTED OTHERWISE. ALL DIMENSIONS SHALL BE CHECKED BY ARCHITECT WITH ANY DISCREPANCIES.
- R. MECHANICAL CHASE EXTERIOR WALLS SHALL BE CONTIGUOUS TO BOTTOM OF INTENT CEILING UNLESS NOTED OTHERWISE. ALL DIMENSIONS SHALL BE CHECKED BY ARCHITECT WITH ANY DISCREPANCIES.
- S. MECHANICAL CHASE EXTERIOR WALLS SHALL BE CONTIGUOUS TO BOTTOM OF INTENT CEILING UNLESS NOTED OTHERWISE. ALL DIMENSIONS SHALL BE CHECKED BY ARCHITECT WITH ANY DISCREPANCIES.
- T. MECHANICAL CHASE EXTERIOR WALLS SHALL BE CONTIGUOUS TO BOTTOM OF INTENT CEILING UNLESS NOTED OTHERWISE. ALL DIMENSIONS SHALL BE CHECKED BY ARCHITECT WITH ANY DISCREPANCIES.
- U. MECHANICAL CHASE EXTERIOR WALLS SHALL BE CONTIGUOUS TO BOTTOM OF INTENT CEILING UNLESS NOTED OTHERWISE. ALL DIMENSIONS SHALL BE CHECKED BY ARCHITECT WITH ANY DISCREPANCIES.
- V. MECHANICAL CHASE EXTERIOR WALLS SHALL BE CONTIGUOUS TO BOTTOM OF INTENT CEILING UNLESS NOTED OTHERWISE. ALL DIMENSIONS SHALL BE CHECKED BY ARCHITECT WITH ANY DISCREPANCIES.
- W. MECHANICAL CHASE EXTERIOR WALLS SHALL BE CONTIGUOUS TO BOTTOM OF INTENT CEILING UNLESS NOTED OTHERWISE. ALL DIMENSIONS SHALL BE CHECKED BY ARCHITECT WITH ANY DISCREPANCIES.
- X. MECHANICAL CHASE EXTERIOR WALLS SHALL BE CONTIGUOUS TO BOTTOM OF INTENT CEILING UNLESS NOTED OTHERWISE. ALL DIMENSIONS SHALL BE CHECKED BY ARCHITECT WITH ANY DISCREPANCIES.
- Y. MECHANICAL CHASE EXTERIOR WALLS SHALL BE CONTIGUOUS TO BOTTOM OF INTENT CEILING UNLESS NOTED OTHERWISE. ALL DIMENSIONS SHALL BE CHECKED BY ARCHITECT WITH ANY DISCREPANCIES.
- Z. MECHANICAL CHASE EXTERIOR WALLS SHALL BE CONTIGUOUS TO BOTTOM OF INTENT CEILING UNLESS NOTED OTHERWISE. ALL DIMENSIONS SHALL BE CHECKED BY ARCHITECT WITH ANY DISCREPANCIES.

**ROOF PLAN KEYNOTES:**

- 1. INSTALL METAL SCREENING PANELS FOR MECHANICAL EQUIPMENT.
- 2. EXISTING FROM ROOF TO REMAIN: FLASH AND DIAL ALL HOLES FROM CONSTRUCTION.
- 3. INSTALL WALL MOUNTED EXTERIOR LIGHTS. SEE EXTERIOR LIGHTING PLAN.
- 4. INITIAL STANDING SEAM METAL ROOF AND FINISH.
- 5. INITIAL SUPPORT FOR METAL SCREENING PANELS.



**A1 ROOF PLAN**  
1/8" = 1'-0"



Scale: 1/8" = 1'-0"

Project: TAQUERIA & EVENT SPACE

Address: 1824 SOUTH PARK STREET, MADISON, WI

Architect: Sketchwork architects

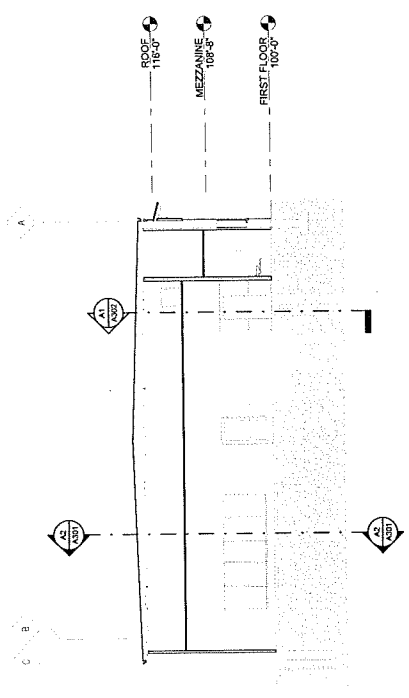
Contractor: ENTERPRIS

Sheet: ROOF PLAN A104

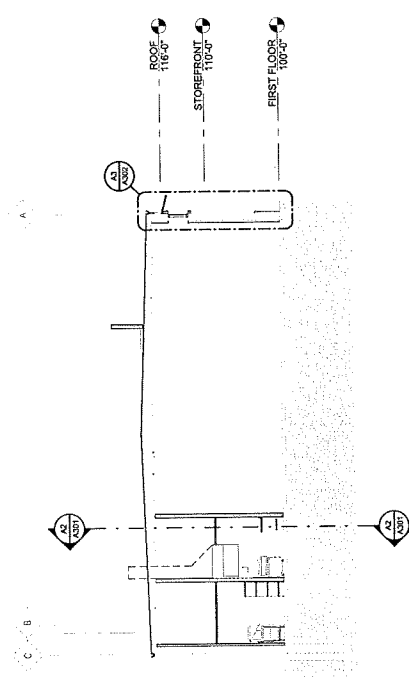
BID SET



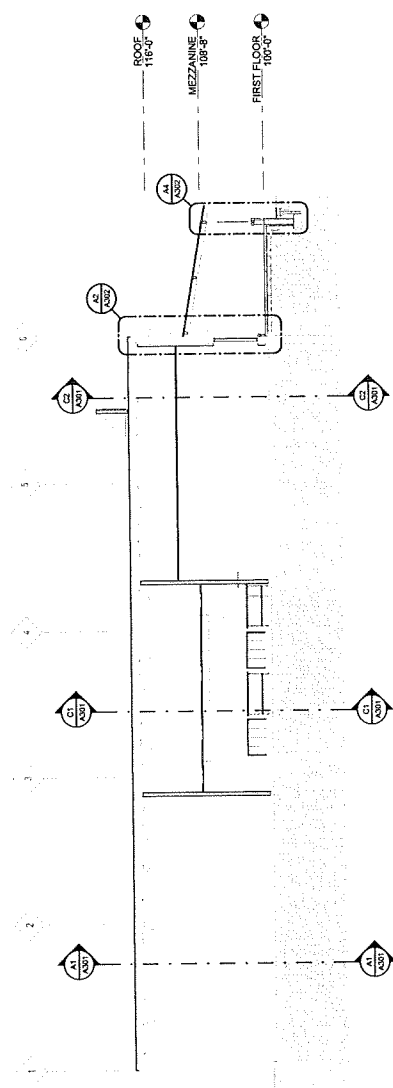
<b>Project Status</b>	FOR BID
2023.04.14	
PROJ. #	2104-01
S. SUTCHANSKI ARCHITECTURE 2022	



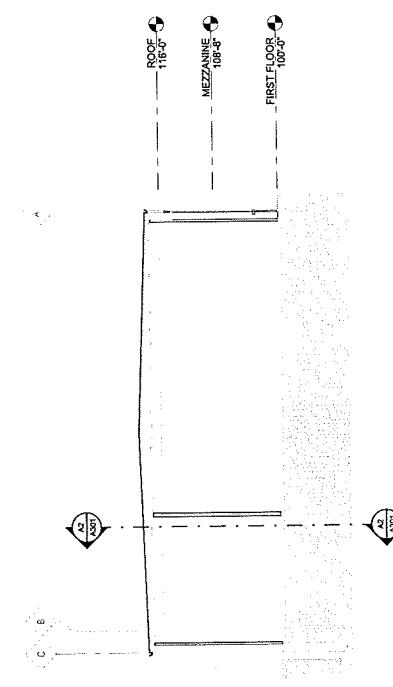
**C2** DINING AREA SECTION  
1/8" = 1'-0"



**C1** KITCHEN SECTION  
1/8" = 1'-0"



**A2** EAST-WEST SECTION  
1/8" = 1'-0"



**A1** EVENT SPACE SECTION  
1/8" = 1'-0"

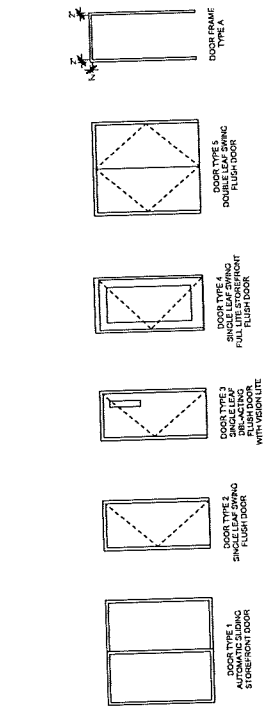






### DOOR SCHEDULE

MARK	NOVIAL DOOR SIZE (BY ALTHING)	DOOR PANEL		FRAME		GLAZING		FINISH		REMARKS
		MATERIAL	TYPE	MATERIAL	TYPE	MATERIAL	TYPE	MATERIAL	TYPE	
01	17'-0" x 7'-0" x 2'-0"	ALUM	1	ALUM	1	GL-1	ANDD	ANDD	ANDD	
02	20'-0" x 7'-0" x 2'-0"	ALUM	1	ALUM	1	GL-1	ANDD	ANDD	ANDD	
03	20'-0" x 7'-0" x 1'-6"	ALUM	1	ALUM	1	GL-1	ANDD	ANDD	ANDD	
04	20'-0" x 7'-0" x 1'-6"	ALUM	1	ALUM	1	GL-1	ANDD	ANDD	ANDD	
05	20'-0" x 7'-0" x 1'-6"	ALUM	1	ALUM	1	GL-1	ANDD	ANDD	ANDD	
06	20'-0" x 7'-0" x 1'-6"	ALUM	1	ALUM	1	GL-1	ANDD	ANDD	ANDD	
07	20'-0" x 7'-0" x 1'-6"	ALUM	1	ALUM	1	GL-1	ANDD	ANDD	ANDD	
08	20'-0" x 7'-0" x 1'-6"	ALUM	1	ALUM	1	GL-1	ANDD	ANDD	ANDD	
09	20'-0" x 7'-0" x 1'-6"	ALUM	1	ALUM	1	GL-1	ANDD	ANDD	ANDD	
10	20'-0" x 7'-0" x 1'-6"	ALUM	1	ALUM	1	GL-1	ANDD	ANDD	ANDD	
11	20'-0" x 7'-0" x 1'-6"	ALUM	1	ALUM	1	GL-1	ANDD	ANDD	ANDD	
12	20'-0" x 7'-0" x 1'-6"	ALUM	1	ALUM	1	GL-1	ANDD	ANDD	ANDD	
13	20'-0" x 7'-0" x 1'-6"	ALUM	1	ALUM	1	GL-1	ANDD	ANDD	ANDD	
14	20'-0" x 7'-0" x 1'-6"	ALUM	1	ALUM	1	GL-1	ANDD	ANDD	ANDD	
15	20'-0" x 7'-0" x 1'-6"	ALUM	1	ALUM	1	GL-1	ANDD	ANDD	ANDD	
16	20'-0" x 7'-0" x 1'-6"	ALUM	1	ALUM	1	GL-1	ANDD	ANDD	ANDD	
17	20'-0" x 7'-0" x 1'-6"	ALUM	1	ALUM	1	GL-1	ANDD	ANDD	ANDD	
18	20'-0" x 7'-0" x 1'-6"	ALUM	1	ALUM	1	GL-1	ANDD	ANDD	ANDD	
19	20'-0" x 7'-0" x 1'-6"	ALUM	1	ALUM	1	GL-1	ANDD	ANDD	ANDD	
20	20'-0" x 7'-0" x 1'-6"	ALUM	1	ALUM	1	GL-1	ANDD	ANDD	ANDD	



DOOR ELEVATIONS  
1/4" = 1'-0"

DOOR SCHEDULE REMARKS

NO.	REMARK
1	
2	
3	

DOOR SCHEDULE LEGEND

ABBREVIATION	TERM
ALUM	ALUMINUM
GL-1	GLASS
GL-2	GLASS
GL-3	GLASS
GL-4	GLASS
GL-5	GLASS
GL-6	GLASS
GL-7	GLASS
GL-8	GLASS
GL-9	GLASS
GL-10	GLASS
GL-11	GLASS
GL-12	GLASS
GL-13	GLASS
GL-14	GLASS
GL-15	GLASS
GL-16	GLASS
GL-17	GLASS
GL-18	GLASS
GL-19	GLASS
GL-20	GLASS
GL-21	GLASS
GL-22	GLASS
GL-23	GLASS
GL-24	GLASS
GL-25	GLASS
GL-26	GLASS
GL-27	GLASS
GL-28	GLASS
GL-29	GLASS
GL-30	GLASS
GL-31	GLASS
GL-32	GLASS
GL-33	GLASS
GL-34	GLASS
GL-35	GLASS
GL-36	GLASS
GL-37	GLASS
GL-38	GLASS
GL-39	GLASS
GL-40	GLASS
GL-41	GLASS
GL-42	GLASS
GL-43	GLASS
GL-44	GLASS
GL-45	GLASS
GL-46	GLASS
GL-47	GLASS
GL-48	GLASS
GL-49	GLASS
GL-50	GLASS
GL-51	GLASS
GL-52	GLASS
GL-53	GLASS
GL-54	GLASS
GL-55	GLASS
GL-56	GLASS
GL-57	GLASS
GL-58	GLASS
GL-59	GLASS
GL-60	GLASS
GL-61	GLASS
GL-62	GLASS
GL-63	GLASS
GL-64	GLASS
GL-65	GLASS
GL-66	GLASS
GL-67	GLASS
GL-68	GLASS
GL-69	GLASS
GL-70	GLASS
GL-71	GLASS
GL-72	GLASS
GL-73	GLASS
GL-74	GLASS
GL-75	GLASS
GL-76	GLASS
GL-77	GLASS
GL-78	GLASS
GL-79	GLASS
GL-80	GLASS
GL-81	GLASS
GL-82	GLASS
GL-83	GLASS
GL-84	GLASS
GL-85	GLASS
GL-86	GLASS
GL-87	GLASS
GL-88	GLASS
GL-89	GLASS
GL-90	GLASS
GL-91	GLASS
GL-92	GLASS
GL-93	GLASS
GL-94	GLASS
GL-95	GLASS
GL-96	GLASS
GL-97	GLASS
GL-98	GLASS
GL-99	GLASS
GL-100	GLASS

DOOR HARDWARE SCHEDULE

NO.	QTY	DESCRIPTION	MANUFACTURER	MODEL	FINISH
1	1	REG ROOM PRIVACY LOCK SET			
2	1	STORAGE LOCK SET			
3	1	GLASS LOCK SET			
4	1	GLASS LOCK SET			
5	1	GLASS LOCK SET			
6	1	GLASS LOCK SET			
7	1	GLASS LOCK SET			
8	1	GLASS LOCK SET			
9	1	GLASS LOCK SET			
10	1	GLASS LOCK SET			
11	1	GLASS LOCK SET			
12	1	GLASS LOCK SET			
13	1	GLASS LOCK SET			
14	1	GLASS LOCK SET			
15	1	GLASS LOCK SET			
16	1	GLASS LOCK SET			
17	1	GLASS LOCK SET			
18	1	GLASS LOCK SET			
19	1	GLASS LOCK SET			
20	1	GLASS LOCK SET			
21	1	GLASS LOCK SET			
22	1	GLASS LOCK SET			
23	1	GLASS LOCK SET			
24	1	GLASS LOCK SET			
25	1	GLASS LOCK SET			
26	1	GLASS LOCK SET			
27	1	GLASS LOCK SET			
28	1	GLASS LOCK SET			
29	1	GLASS LOCK SET			
30	1	GLASS LOCK SET			
31	1	GLASS LOCK SET			
32	1	GLASS LOCK SET			
33	1	GLASS LOCK SET			
34	1	GLASS LOCK SET			
35	1	GLASS LOCK SET			
36	1	GLASS LOCK SET			
37	1	GLASS LOCK SET			
38	1	GLASS LOCK SET			
39	1	GLASS LOCK SET			
40	1	GLASS LOCK SET			
41	1	GLASS LOCK SET			
42	1	GLASS LOCK SET			
43	1	GLASS LOCK SET			
44	1	GLASS LOCK SET			
45	1	GLASS LOCK SET			
46	1	GLASS LOCK SET			
47	1	GLASS LOCK SET			
48	1	GLASS LOCK SET			
49	1	GLASS LOCK SET			
50	1	GLASS LOCK SET			
51	1	GLASS LOCK SET			
52	1	GLASS LOCK SET			
53	1	GLASS LOCK SET			
54	1	GLASS LOCK SET			
55	1	GLASS LOCK SET			
56	1	GLASS LOCK SET			
57	1	GLASS LOCK SET			
58	1	GLASS LOCK SET			
59	1	GLASS LOCK SET			
60	1	GLASS LOCK SET			
61	1	GLASS LOCK SET			
62	1	GLASS LOCK SET			
63	1	GLASS LOCK SET			
64	1	GLASS LOCK SET			
65	1	GLASS LOCK SET			
66	1	GLASS LOCK SET			
67	1	GLASS LOCK SET			
68	1	GLASS LOCK SET			
69	1	GLASS LOCK SET			
70	1	GLASS LOCK SET			
71	1	GLASS LOCK SET			
72	1	GLASS LOCK SET			
73	1	GLASS LOCK SET			
74	1	GLASS LOCK SET			
75	1	GLASS LOCK SET			
76	1	GLASS LOCK SET			
77	1	GLASS LOCK SET			
78	1	GLASS LOCK SET			
79	1	GLASS LOCK SET			
80	1	GLASS LOCK SET			
81	1	GLASS LOCK SET			
82	1	GLASS LOCK SET			
83	1	GLASS LOCK SET			
84	1	GLASS LOCK SET			
85	1	GLASS LOCK SET			
86	1	GLASS LOCK SET			
87	1	GLASS LOCK SET			
88	1	GLASS LOCK SET			
89	1	GLASS LOCK SET			
90	1	GLASS LOCK SET			
91	1	GLASS LOCK SET			
92	1	GLASS LOCK SET			
93	1	GLASS LOCK SET			
94	1	GLASS LOCK SET			
95	1	GLASS LOCK SET			
96	1	GLASS LOCK SET			
97	1	GLASS LOCK SET			
98	1	GLASS LOCK SET			
99	1	GLASS LOCK SET			
100	1	GLASS LOCK SET			

WINDOW SCHEDULE REMARKS

NO.	REMARK
1	
2	
3	

GLAZING TYPE SCHEDULE

MARK	DESCRIPTION
GL-1	1 DOUBLE PANEL LOW-E GLAZING, QUALITY UNLEADED
GL-2	1 DOUBLE PANEL LOW-E GLAZING, QUALITY UNLEADED
GL-3	1 DOUBLE PANEL LOW-E GLAZING, QUALITY UNLEADED
GL-4	1 DOUBLE PANEL LOW-E GLAZING, QUALITY UNLEADED
GL-5	1 DOUBLE PANEL LOW-E GLAZING, QUALITY UNLEADED
GL-6	1 DOUBLE PANEL LOW-E GLAZING, QUALITY UNLEADED
GL-7	1 DOUBLE PANEL LOW-E GLAZING, QUALITY UNLEADED
GL-8	1 DOUBLE PANEL LOW-E GLAZING, QUALITY UNLEADED
GL-9	1 DOUBLE PANEL LOW-E GLAZING, QUALITY UNLEADED
GL-10	1 DOUBLE PANEL LOW-E GLAZING, QUALITY UNLEADED
GL-11	1 DOUBLE PANEL LOW-E GLAZING, QUALITY UNLEADED
GL-12	1 DOUBLE PANEL LOW-E GLAZING, QUALITY UNLEADED
GL-13	1 DOUBLE PANEL LOW-E GLAZING, QUALITY UNLEADED
GL-14	1 DOUBLE PANEL LOW-E GLAZING, QUALITY UNLEADED
GL-15	1 DOUBLE PANEL LOW-E GLAZING, QUALITY UNLEADED
GL-16	1 DOUBLE PANEL LOW-E GLAZING, QUALITY UNLEADED
GL-17	1 DOUBLE PANEL LOW-E GLAZING, QUALITY UNLEADED
GL-18	1 DOUBLE PANEL LOW-E GLAZING, QUALITY UNLEADED
GL-19	1 DOUBLE PANEL LOW-E GLAZING, QUALITY UNLEADED
GL-20	1 DOUBLE PANEL LOW-E GLAZING, QUALITY UNLEADED
GL-21	1 DOUBLE PANEL LOW-E GLAZING, QUALITY UNLEADED
GL-22	1 DOUBLE PANEL LOW-E GLAZING, QUALITY UNLEADED
GL-23	1 DOUBLE PANEL LOW-E GLAZING, QUALITY UNLEADED
GL-24	1 DOUBLE PANEL LOW-E GLAZING, QUALITY UNLEADED
GL-25	1 DOUBLE PANEL LOW-E GLAZING, QUALITY UNLEADED
GL-26	1 DOUBLE PANEL LOW-E GLAZING, QUALITY UNLEADED
GL-27	1 DOUBLE PANEL LOW-E GLAZING, QUALITY UNLEADED
GL-28	1 DOUBLE PANEL LOW-E GLAZING, QUALITY UNLEADED
GL-29	1 DOUBLE PANEL LOW-E GLAZING, QUALITY UNLEADED
GL-30	1 DOUBLE PANEL LOW-E GLAZING, QUALITY UNLEADED
GL-31	1 DOUBLE PANEL LOW-E GLAZING, QUALITY UNLEADED
GL-32	1 DOUBLE PANEL LOW-E GLAZING, QUALITY UNLEADED
GL-33	1 DOUBLE PANEL LOW-E GLAZING, QUALITY UNLEADED
GL-34	1 DOUBLE PANEL LOW-E GLAZING, QUALITY UNLEADED
GL-35	1 DOUBLE PANEL LOW-E GLAZING, QUALITY UNLEADED
GL-36	1 DOUBLE PANEL LOW-E GLAZING, QUALITY UNLEADED
GL-37	1 DOUBLE PANEL LOW-E GLAZING, QUALITY UNLEADED
GL-38	1 DOUBLE PANEL LOW-E GLAZING, QUALITY UNLEADED
GL-39	1 DOUBLE PANEL LOW-E GLAZING, QUALITY UNLEADED
GL-40	1 DOUBLE PANEL LOW-E GLAZING, QUALITY UNLEADED
GL-41	1 DOUBLE PANEL LOW-E GLAZING, QUALITY UNLEADED
GL-42	1 DOUBLE PANEL LOW-E GLAZING, QUALITY UNLEADED
GL-43	1 DOUBLE PANEL LOW-E GLAZING, QUALITY UNLEADED
GL-44	1 DOUBLE PANEL LOW-E GLAZING, QUALITY UNLEADED
GL-45	1 DOUBLE PANEL LOW-E GLAZING, QUALITY UNLEADED
GL-46	1 DOUBLE PANEL LOW-E GLAZING, QUALITY UN

















**WATER SOFTENER SCHEDULE (EACH VESSEL)**

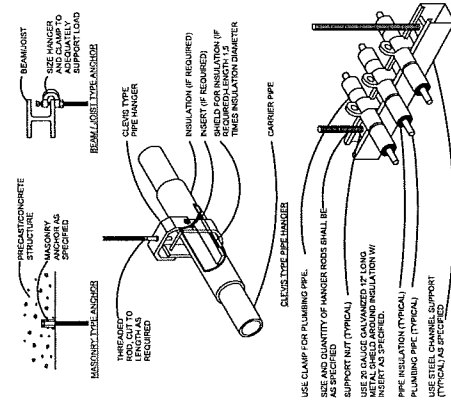
TAG	LOCATION	MANUFACTURER	MODEL	NORMAL FLOW (GPM)	MAXIMUM FLOW (GPM)	SOFTNER CAPACITY (GAL)	WATER WELDER
WS1	RECEIVING 1ST	WATTS	EW5-3514422N	4515	1500/1800	7500	NO

**INLINE PUMP SCHEDULE**

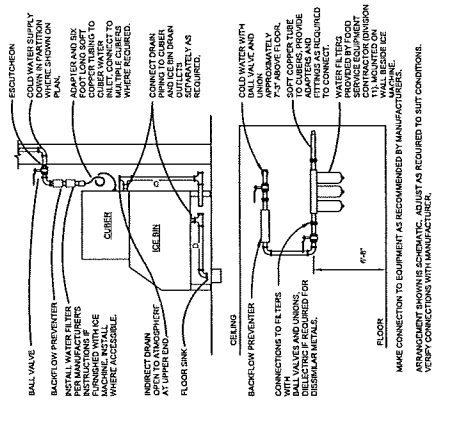
SIG	QTY	LOCATION	MANUFACTURER	MODEL	HP	EFFICIENCY	FLOW (GPM)	HEAD (FT)	NOTES	COMPONENTS	REMARKS

**GAS FIRED WATER HEATER SCHEDULE**

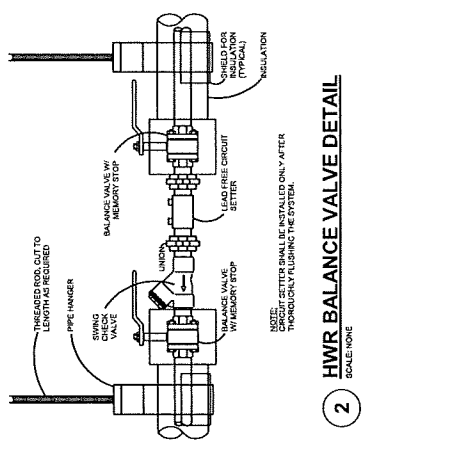
TAG	LOCATION	MANUFACTURER	MODEL	BTU/HOUR	TEMPERATURE	TYPE	WATER CAPACITY (GAL)	REMARKS



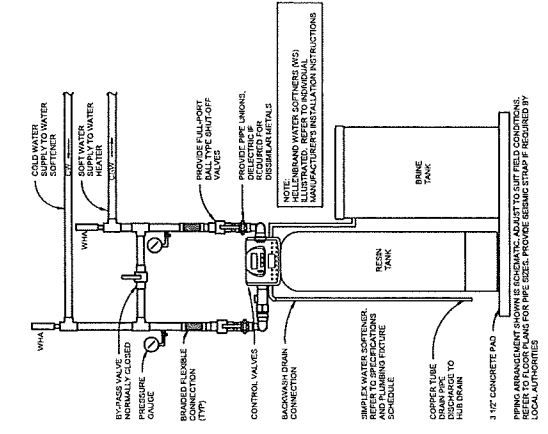
**4 PIPE HANGER DETAILS**  
SCALE: NONE



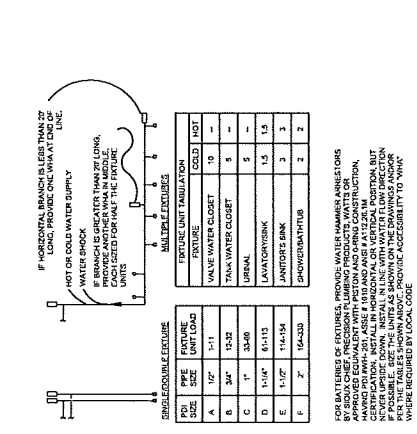
**3 ICE MACHINE CONNECTION DETAIL**  
SCALE: NONE



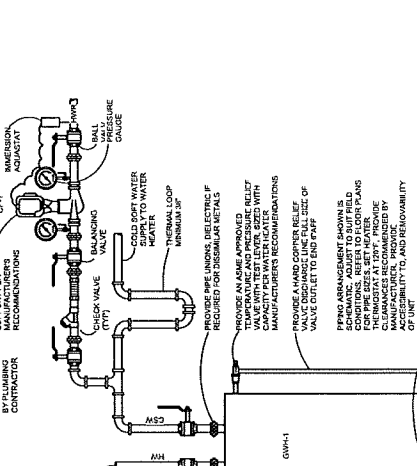
**2 HWR BALANCE VALVE DETAIL**  
SCALE: NONE



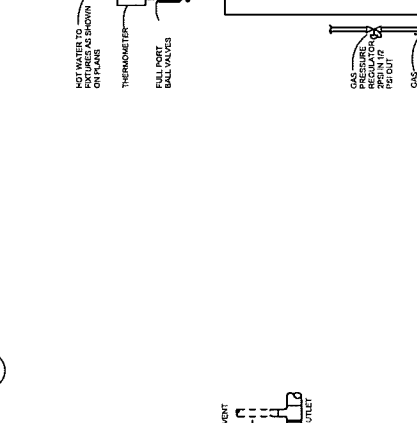
**1 SIMPLEX WATER SOFTNER DETAIL**  
SCALE: NONE



**5 WATER HAMMER ARRESTOR DETAIL**  
SCALE: NONE



**6 GAS WATER HEATER DETAIL**  
SCALE: NONE



**7 INTERIOR BELOW SLAB GREASE INTERCEPTOR DETAIL**  
SCALE: NONE

**FOR BATTERIES OF FIXTURES, PROVIDE WATER HAMMER ARRESTORS SCHEMATIC, ADJUST TO SUIT FIELD CONDITIONS. APPROVED EQUIPMENT WITH PERMANENT AND CORROSION RESISTANT HARDWARE SHALL BE USED. PROVIDE WATER HAMMER ARRESTOR DETAIL FOR EACH UNIT. INSTALL IN LINE WITH WATER FLOW DIRECTION. PROVIDE ACCESSIBILITY TO UNIT. PROVIDE ACCESSIBILITY TO UNIT. PROVIDE ACCESSIBILITY TO UNIT.**

**FOR BATTERIES OF FIXTURES, PROVIDE WATER HAMMER ARRESTORS SCHEMATIC, ADJUST TO SUIT FIELD CONDITIONS. APPROVED EQUIPMENT WITH PERMANENT AND CORROSION RESISTANT HARDWARE SHALL BE USED. PROVIDE WATER HAMMER ARRESTOR DETAIL FOR EACH UNIT. INSTALL IN LINE WITH WATER FLOW DIRECTION. PROVIDE ACCESSIBILITY TO UNIT. PROVIDE ACCESSIBILITY TO UNIT. PROVIDE ACCESSIBILITY TO UNIT.**

**Project Status**

DATE	DESCRIPTION
03/23/21	ISSUED





