

ROTARY CENTENNIAL PLAZA MADISON, WISCONSIN

October 20, 2011

David B.
Dahlquist

ART PROGRAM
MASTER PLANNING

PUBLIC ART

TILE WORK

ARCHITECTURAL

RESTORATION

LIGHTING

SITE INTEGRATION



CONNECTIONS

It's as important to share the **thought process** about how the concept for a project evolves as it is to communicate it only by visual renderings.

This is the public art process.



HISTORY OF MADISON

“Madison was created in 1836, when former federal judge James Duane Doty purchased over 1000 acres of swamp and forest land on the isthmus between Lakes Mendota and Monona within the *Four Lakes Region*, with the intention of building a city on the site.”

“Lake, City, Lake”

History of the Lake Mendota Region

by CHARLES E. BROWN, Director
State Historical Museum

THE Winnebago Indian name for Lake Mendota or Fourth Lake is Wonk-shek-ho-mik-la, meaning "where the man lies". The name Mendota, given to this lake in 1849 by Frank Hudson, a Madison surveyor, is a Sioux Indian name meaning "the mouth of the river". The Prairie Potawatomi called the lake Mantó-ka, "snake maker", referring perhaps to the early abundance of rattlesnakes at different places along its shores.

The Four Lakes region, was known to the Winnebago Indians as Tay-cho-pe-ra. The other three lakes are Monona, Waubesa and Kegonsa. Lake Wingra, a smaller lake, is connected with Lake Monona by a creek. The length of Lake Mendota is 6 miles and its greatest breadth $4\frac{1}{2}$ miles. Its area is 15.2 square miles. The walking distance around the lake is 24 miles. The greatest depth of the lake is 84 feet and the average depth $37\frac{1}{2}$ feet. The Yahara or Catfish river (Myän-mek) flows into Lake Mendota on its north shore. This stream connects the four lakes with each other.

The earliest American travelers to visit the Four Lakes were James D. Doty (afterwards territorial governor of Wisconsin), Morgan L. Martin of Green Bay, and Lieut. Jefferson Davis (afterwards president of the Southern Confederacy), then stationed at Fort Winnebago, at Portage. John Catlin and Moses Strong staked out the center of the plat of Madison in February, 1837. Mr. and Mrs. Eben D. Peck, the first white settlers, came to the site of Madison from Blue Mounds, April 15, 1837.

They erected a log cabin near present King street, overlooking Lake Monona. Here the men who came to erect the first Madison state capitol building were boarded. Oliver Armel, a Frenchman, then had an Indian trading cabin between the capitol site and the Lake Mendota shore. At west point, on the northeast shore of the same lake, Wallace Rowan, another Indian trader, had a cabin in 1832. In 1833 he disposed of this post to Michel St. Cyr, a French Canadian. He traded with the Winnebago Indians until after the building of Madison. The Sauk chief Black Hawk with his warriors and women retreated over the site of Madison on his way to the Wisconsin river in July, 1832. A monument on the Upper University campus marks the line of his pursuit by U. S. troops.

Winnebago Indian villages and camps were located at a number of places on the shores of Lake Mendota before and after white men came to this region. Their dome-shaped wigwams consisted of a framework of bent saplings covered with strips of bark or rush matting. They grew corn at all of their villages. In 1837 one of their large villages was located on the shores of a large marshy area, now Tenney Park, on the east shore of the lake and the adjoining lake shores. It had several hundred inhabitants. Its name is given as Chee-nunk, "village".









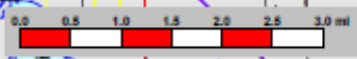
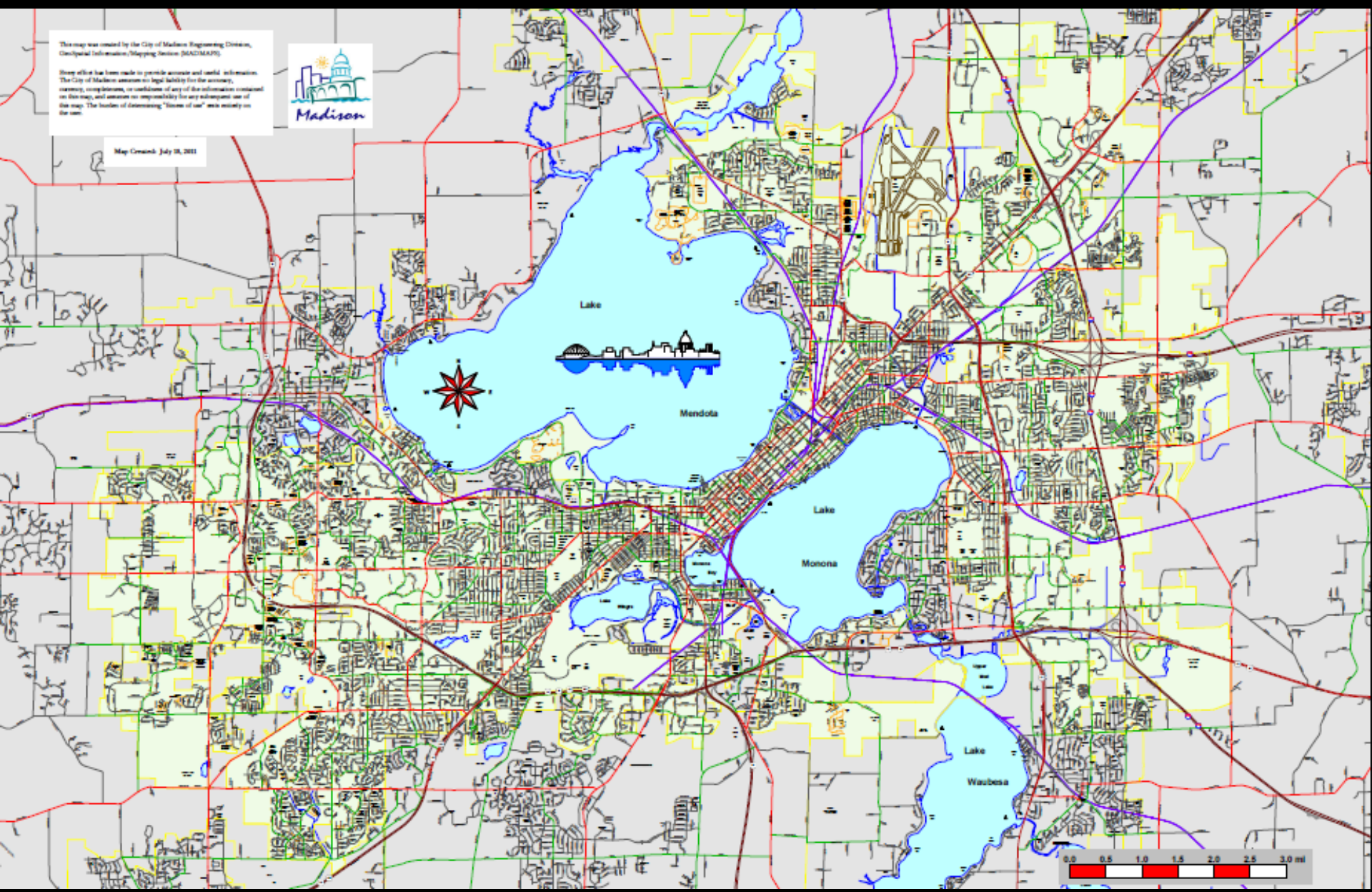


This map was created by the City of Madison Engineering Division, Geospatial Information/Mapping Section (GADM/MS).

Every effort has been made to provide accurate and useful information. The City of Madison assumes no legal liability for the accuracy, currency, completeness, or conditions of any of the information contained on this map, and assumes no responsibility for any subsequent use of the map. The burden of determining "fitness of use" rests entirely on the user.

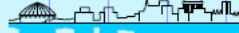


Map Created: July 28, 2011





City of Madison 2011



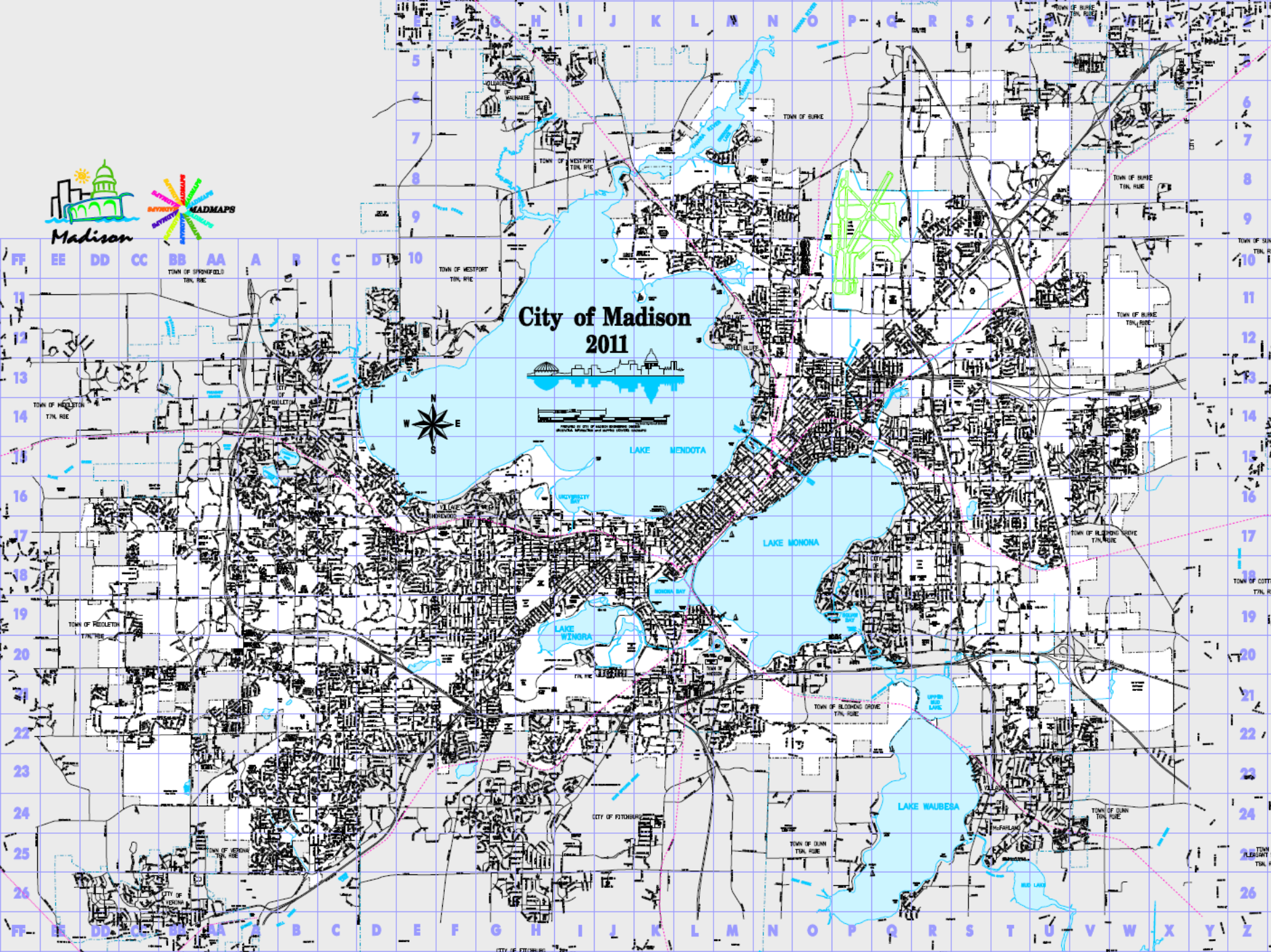
LAKE MENDOTA

LAKE MONONA

LAKE KENOSHA

UPPER LAKE

LAKE WAUBESA





Frank Lloyd Wright
Visitor Center —
Taliesin Estate



Wellerheim Winery



Old Feed Mill

CAVE OF THE MOUNDS
National Natural Landmark



Little America
Amusement Park &
Miniature Golf

MADISON

L. Monona
L. Waubesa
L. Kegonsa

DePue
S.A.M.A.S.

Kettle
Moraine
S.F.

Native American Mounds
in Madison and Dane County

- Summit Park
- Shields Park
- Hudson Park
- Glass Taylor Conservancy
- Mendota State Hospital Grounds
- Clendenen Park
- Vine Grove Park
- Villa Park
- Forest Hill Cemetery
- Highwood College
- Observatory Hill
- Willow Drive
- Peace Point
- Abernethy
- Spring Harbor School
- Governor Nelson State Park
- Yahara Heights County Park
- Indian Mound Park
- Goodland County Park
- Sepulcher Park

Lake Mendota

Lake Monona

L. Wingra

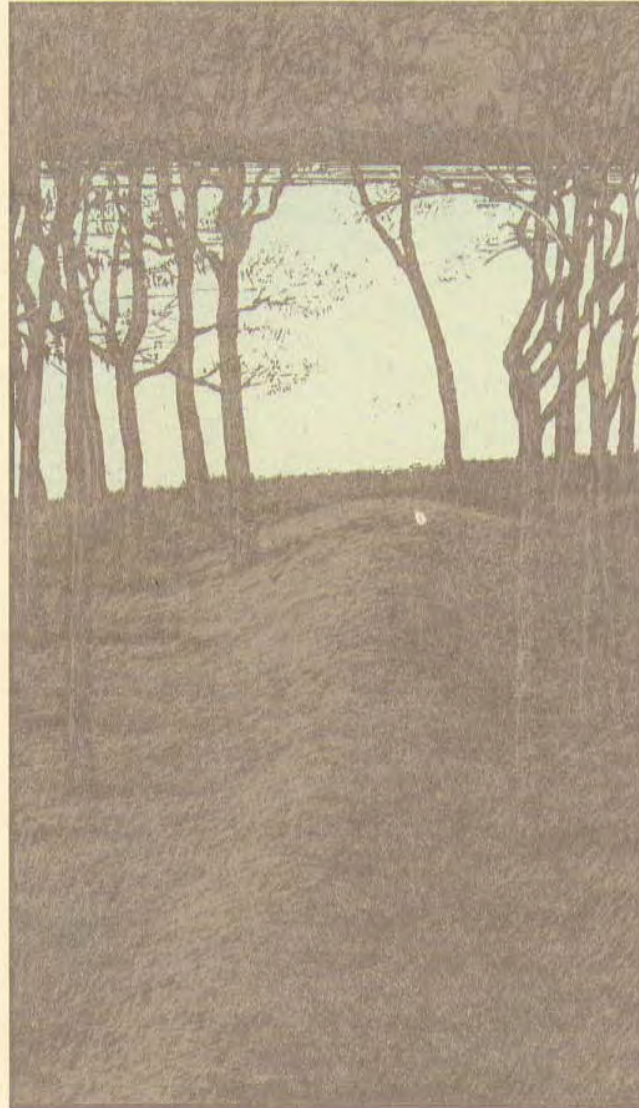
Lake Waubesa



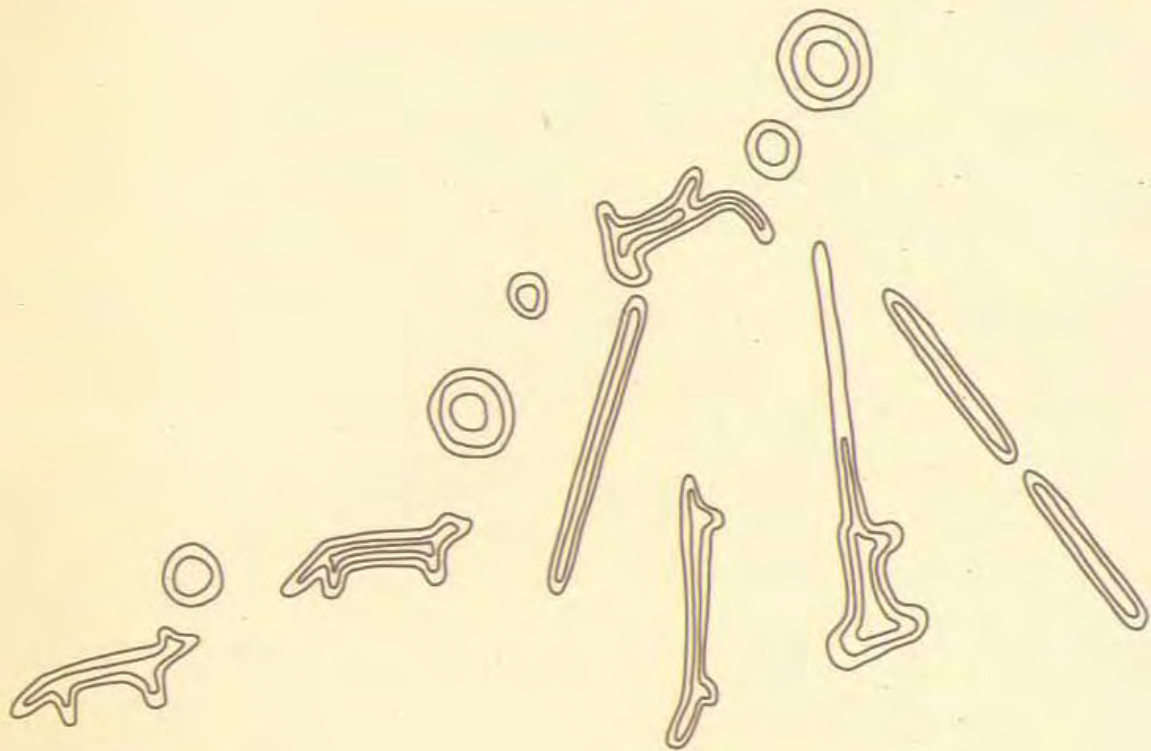
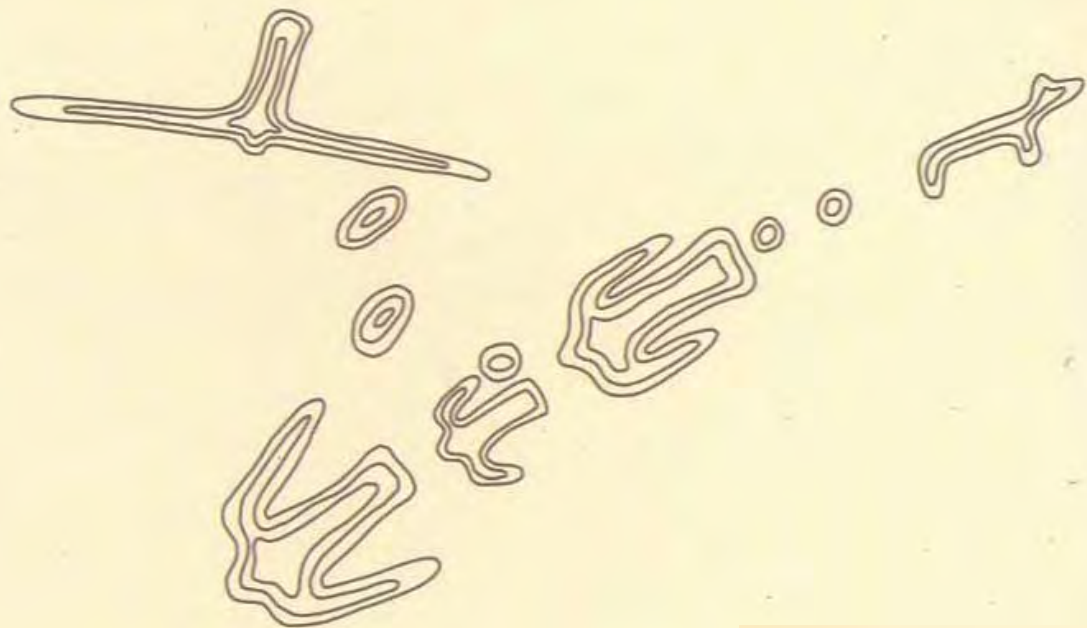
Native American Mounds in Madison and Dane County

- | | | | |
|----|-----------------------------------|----|-------------------------------|
| 1 | Burrows Park | 11 | Observatory Hill |
| 2 | Elmside Park | 12 | Willow Drive |
| 3 | Hudson Park | 13 | Picnic Point |
| 4 | Edna Taylor
Conservancy | 14 | Aboretum |
| 5 | Mendota State
Hospital Grounds | 15 | Spring Harbor School |
| 6 | Cherokee Park | 16 | Governor Nelson
State Park |
| 7 | Vilas Circle Park | 17 | Yahara Heights
County Park |
| 8 | Vilas Park | 18 | Indian Mound Park |
| 9 | Forest Hill Cemetery | 19 | Goodland County Park |
| 10 | Edgewood College | 20 | Siggelkow Park |

Native American Mounds in Madison and Dane County



A Madison Heritage Publication



“A plaque identifies the location of an ancient Native American effigy mound in the shape of a bird near Observatory Hill. There are believed to be more burial mounds at UW-Madison than any other US campus.”



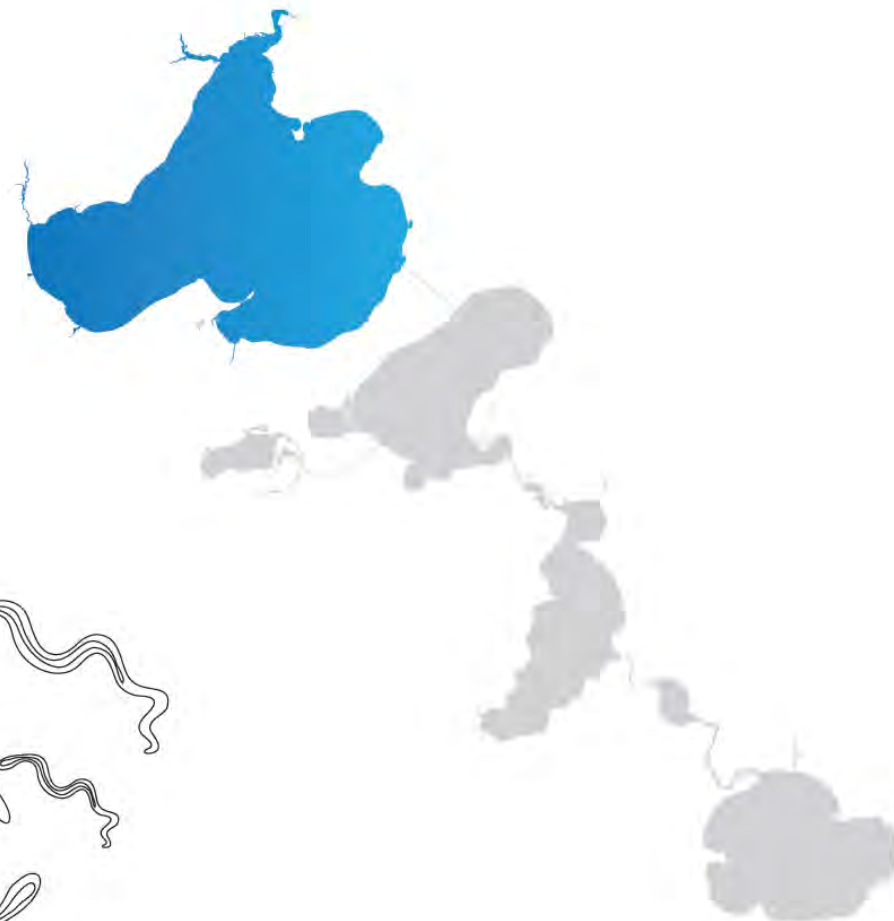
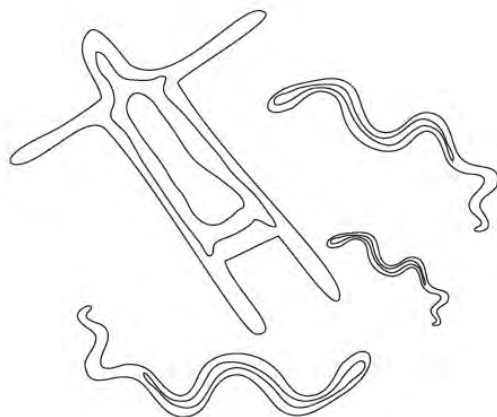




LAKE MENDOTA

Ho-Chunk:

“Wonk-shek-ho-mik-la”
meaning “where the man lies.”
Potawatomi called the lake
Mantó-ka, or “snake-maker”



Also: Dakota word meaning “great”. Sioux Indian name meaning “the mouth of the river”

LAKE MONONA

Potawatomi:

Potawatomi word meaning
“wild rice”

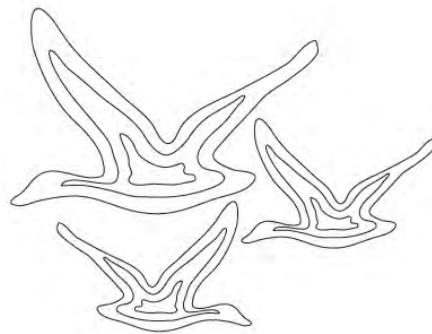


Also: A Chippewa word believed to mean “beautiful.” Or “Tchee-ho-bo-kee-xa-te-la” a Ho-Chunk word meaning “Teepee Lake”

LAKE WINGRA

Ho-Chunk:

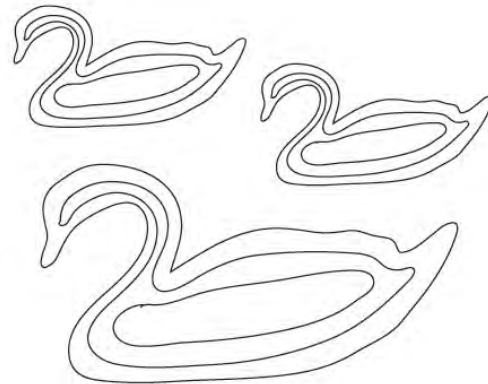
Meaning “duck”



LAKE WAUBESA

Chippewa:

“Wau-bih-zee” meaning swan.
Or wau-hih-sa meaning white
bird or “thing flies along”

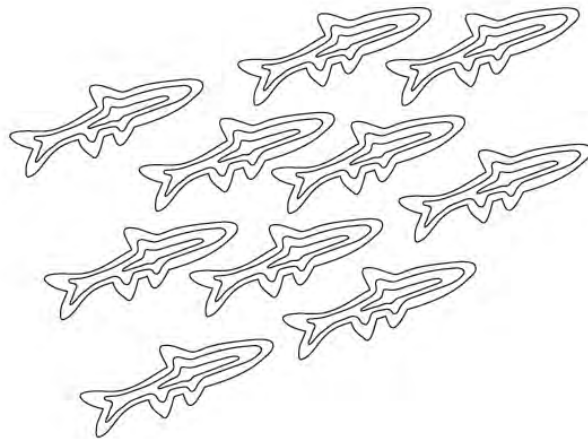


Also: “Sa-hoo-cha-te-la,” meaning “lake of the rushes”

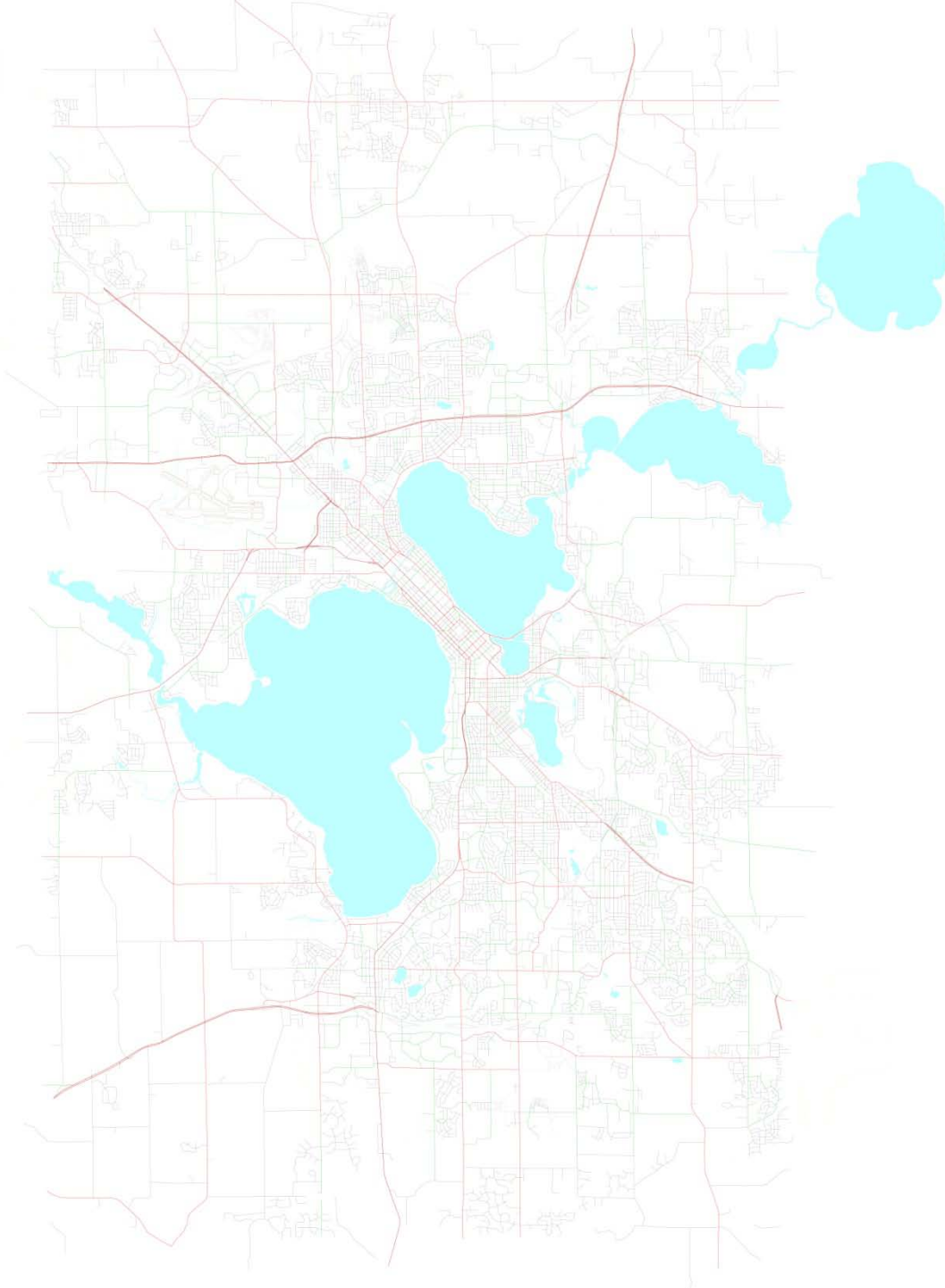
LAKE KEGONSA

Chippewa:

“Gigonsag” meaning “little fish or minnows”



Also: “Na-sa-koo-cha-tel-a,” a Ho-Chunk word meaning “hard maple grove lake”





DO NOT ENTER

MUSEUM



anderson

anderson

BIKE



DO NOT
ENTER







ONE WAY
←

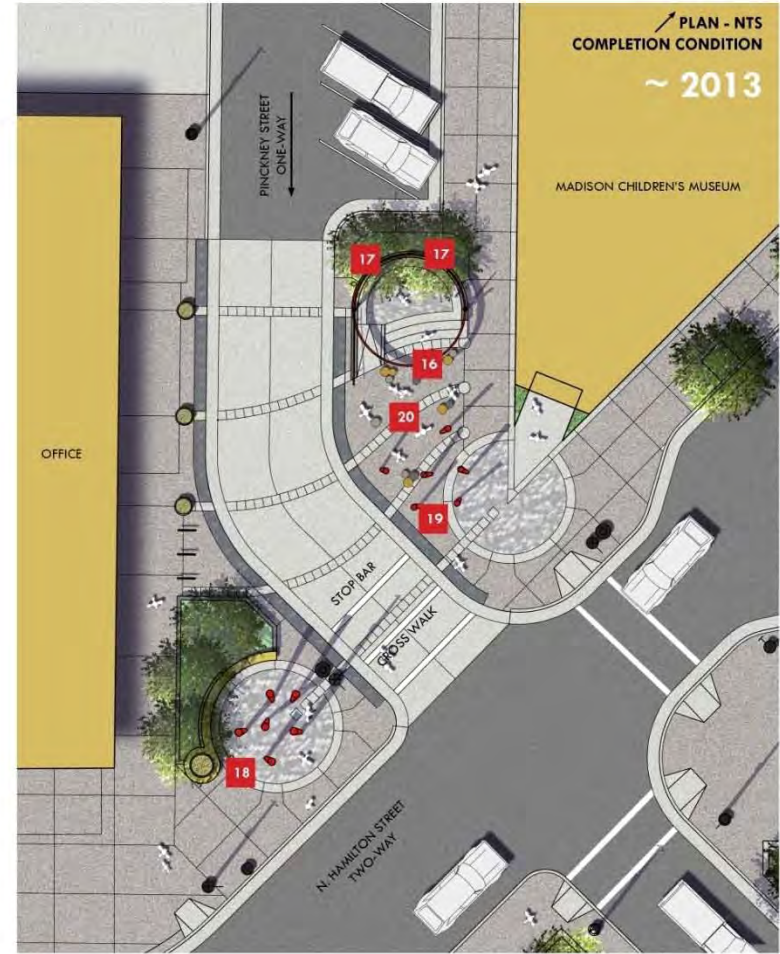
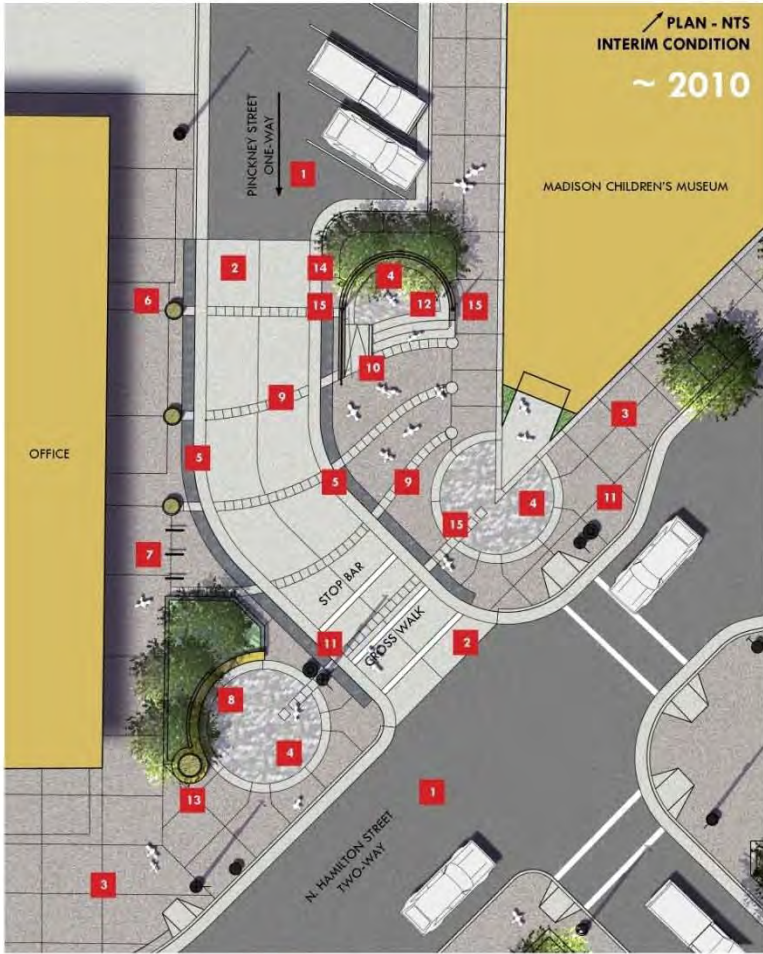


EXCEPT BICYCLES

NO TURN ON RED
ONE WAY →

E. Miriam St



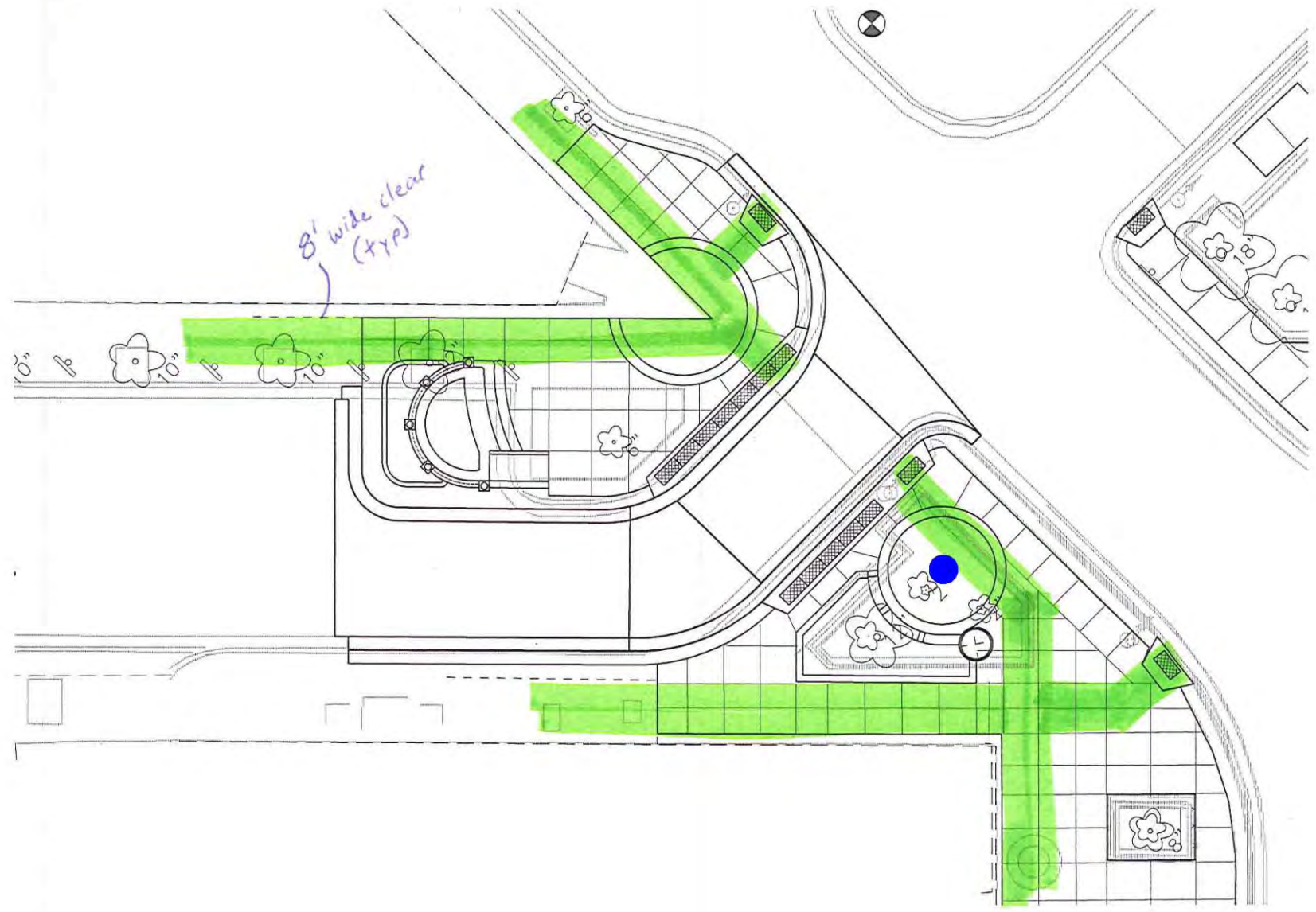


- | | | |
|---|--|--|
| 1 Asphalt Pavement | 6 Planters on Band Terminus Points | 11 Trash Receptacle |
| 2 Concrete 'Table Top' Pavement | 7 Bike Racks | 12 Stage-3 Risers at 4" Height |
| 3 Exposed Aggregate Pavement | 8 Seating Arc with 'Rotary Plaza' Signage, Block Stone Bench - Metal Laser Cut Sign | 13 Continue Stone Bench to Create a Circular Pedestal with Ornate Focal Planter in Center |
| 4 Granite Pavers-Match State Street | 9 Standard Concrete Bands - Scored Every 18" | 14 Water Hose Bib/Access |
| 5 Truncated Domes - 2" Wide Band - Color Black | 10 Accessible Ramp up to Stage | 15 Temporary Light Poles Located on Stage Wall - Conduit to be Run to each Pole for Future Lighting |

- | |
|---|
| 16 Stage Overhead Element - Attached to Stage Wall with 5 Poles |
| 17 Stage Rear Screen Panels - Remove Temporary Rail, Add Poles & Screen Panels |
| 18 Red Stix Identity Feature - Artist (Large) |
| 19 Red Stix Identity Feature - Artist (Small) |
| 20 Philosopher Stone Type Seating-Varying Heights |



1" = 20'

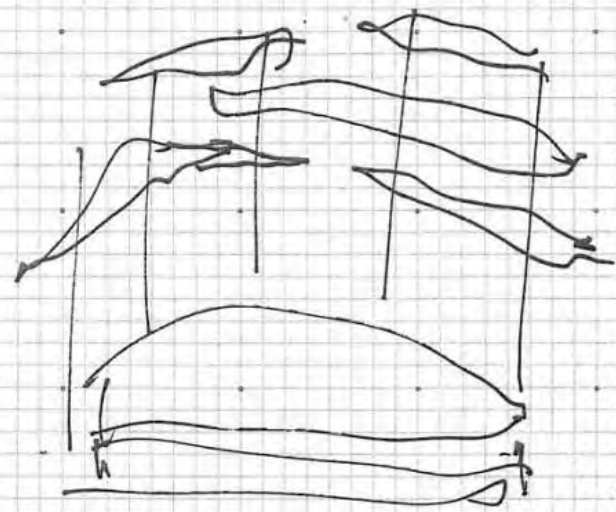
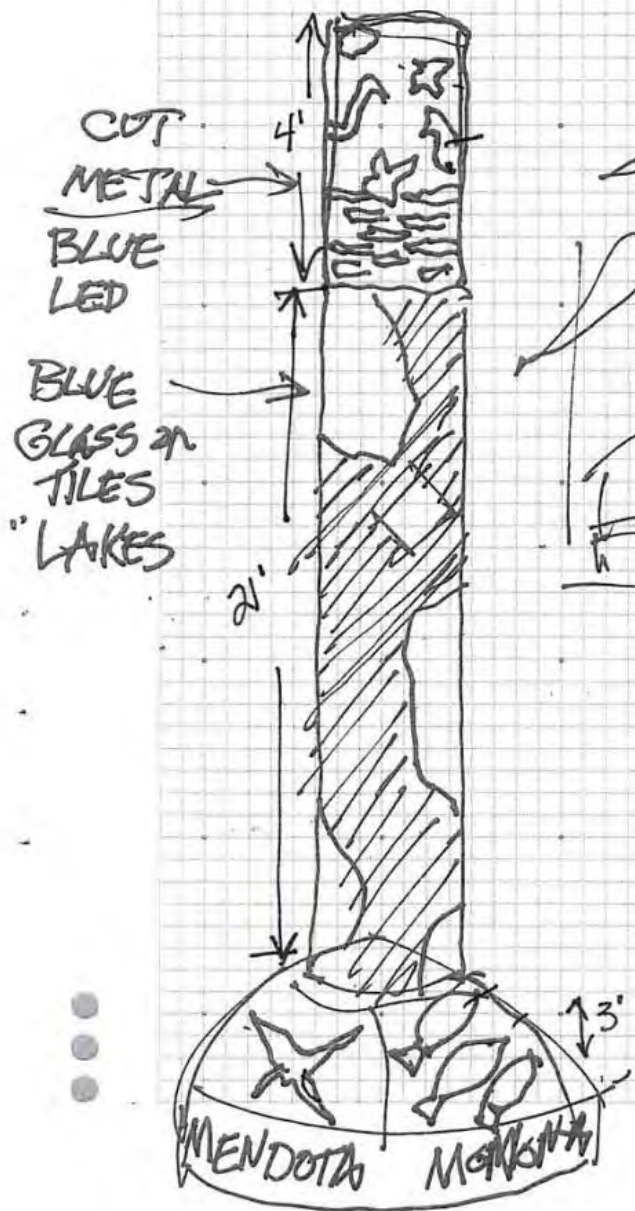




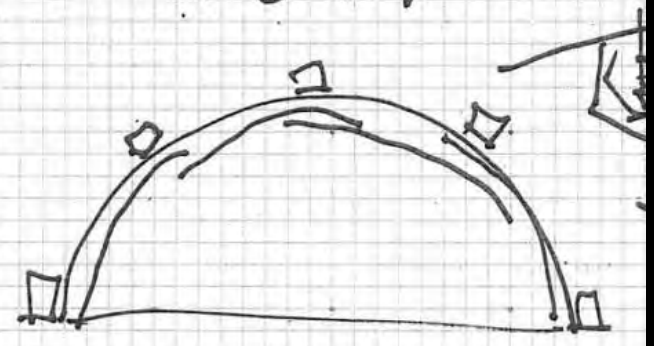


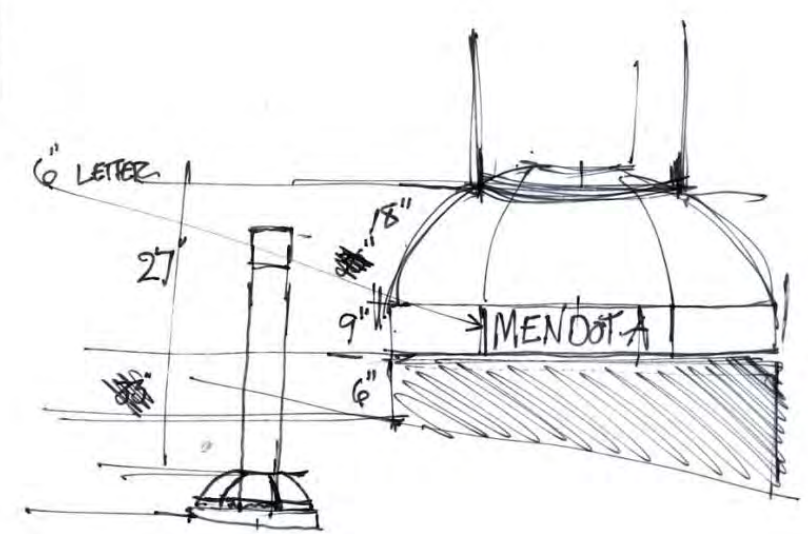
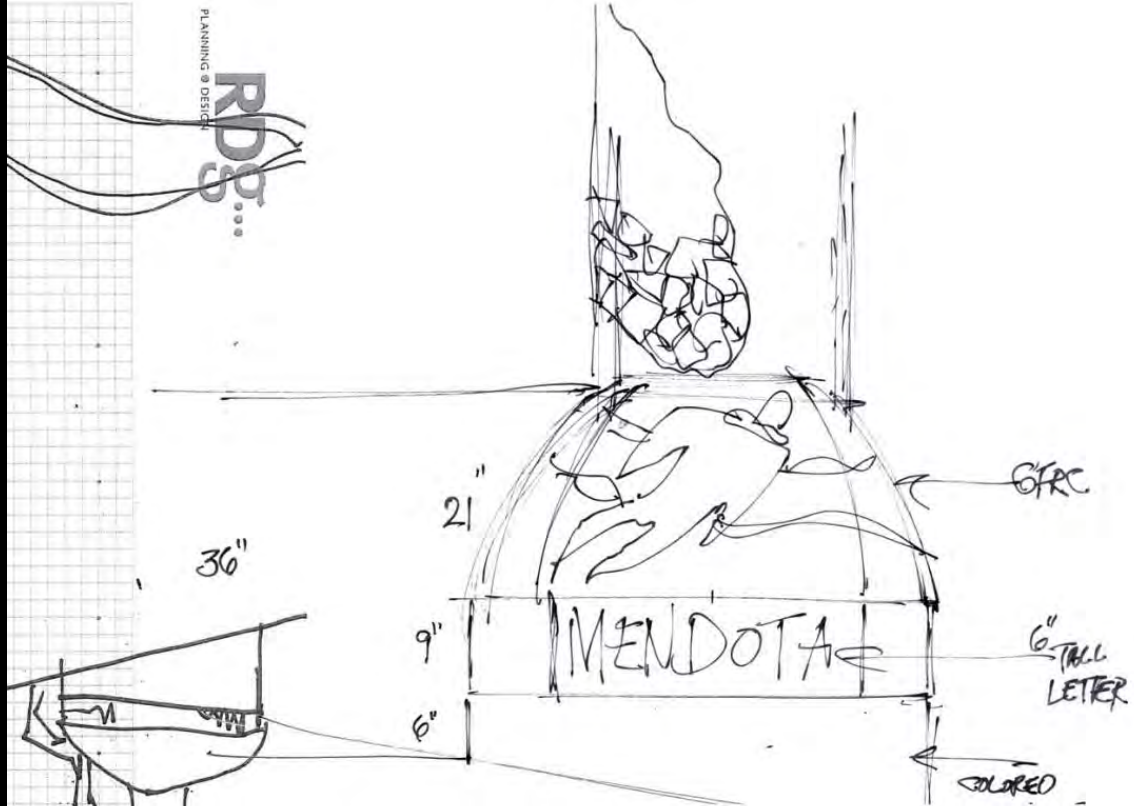






← BLUE METAL "WAVES" OR CLOUDS OUTLINED IN LED OR NEON







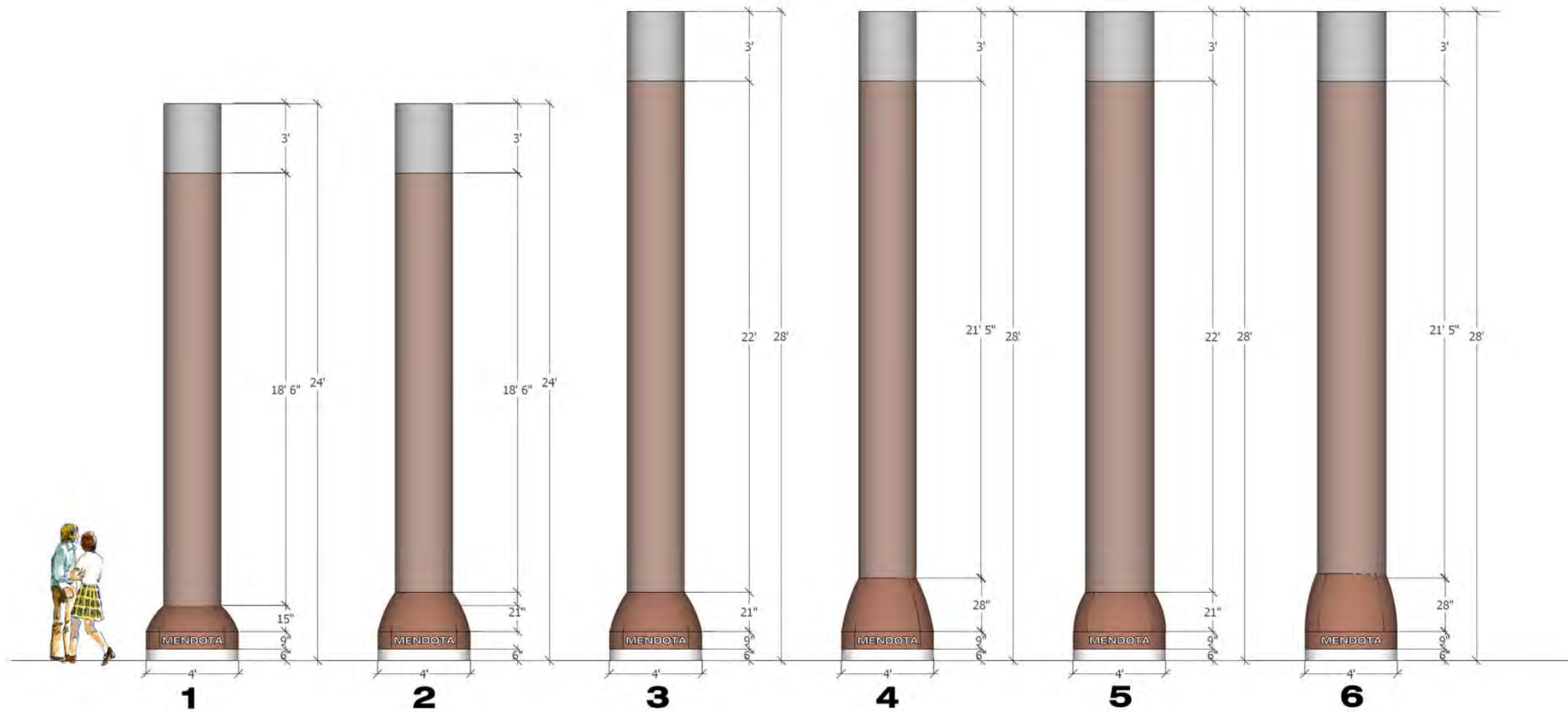
Diameter= 30"
Height= 24'

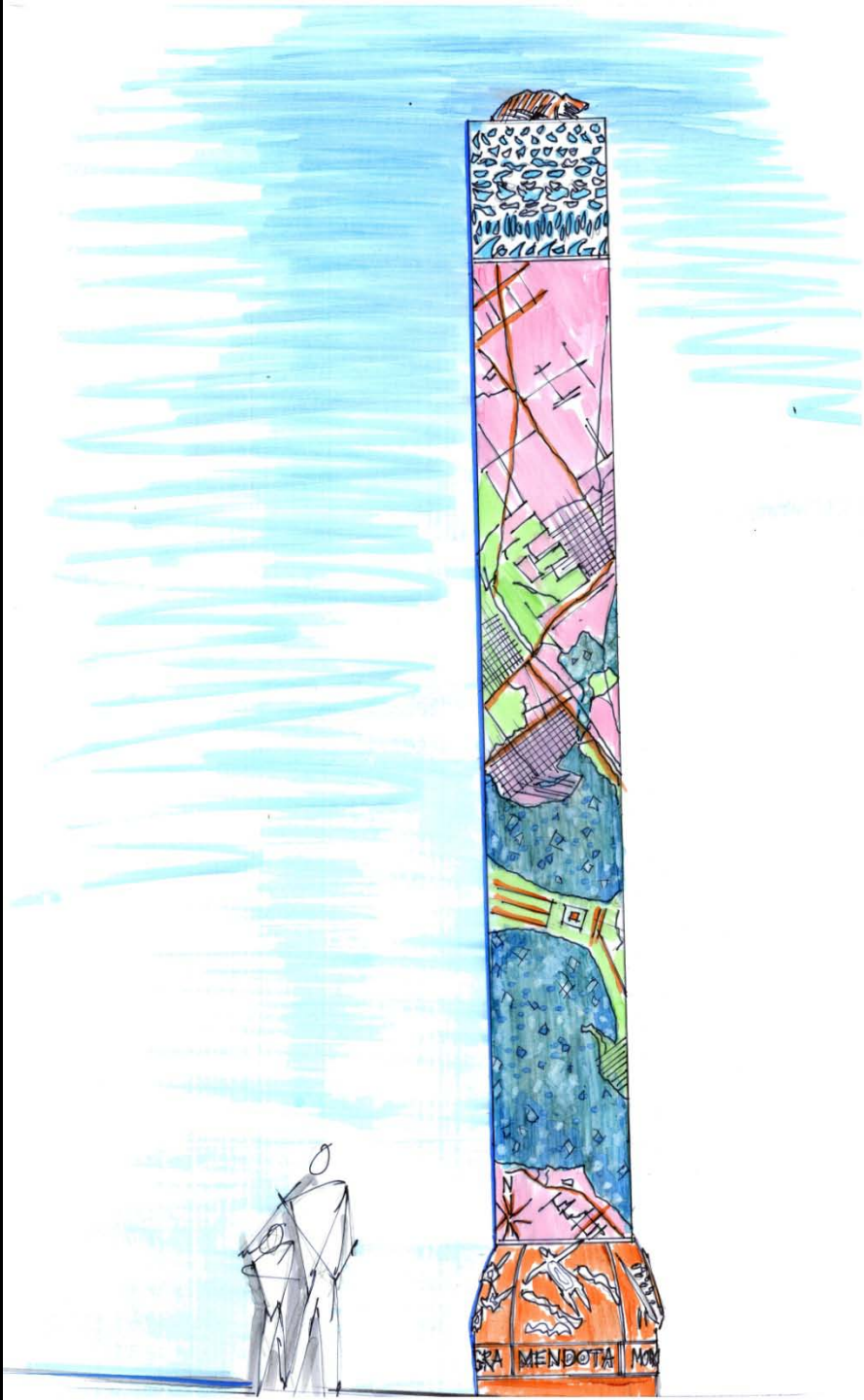


Diameter= 30"
Height= 28'



Diameter= 36"
Height= 28'





MADISON MARKER: LAND OF FIVE LAKES COLUMN



North



East



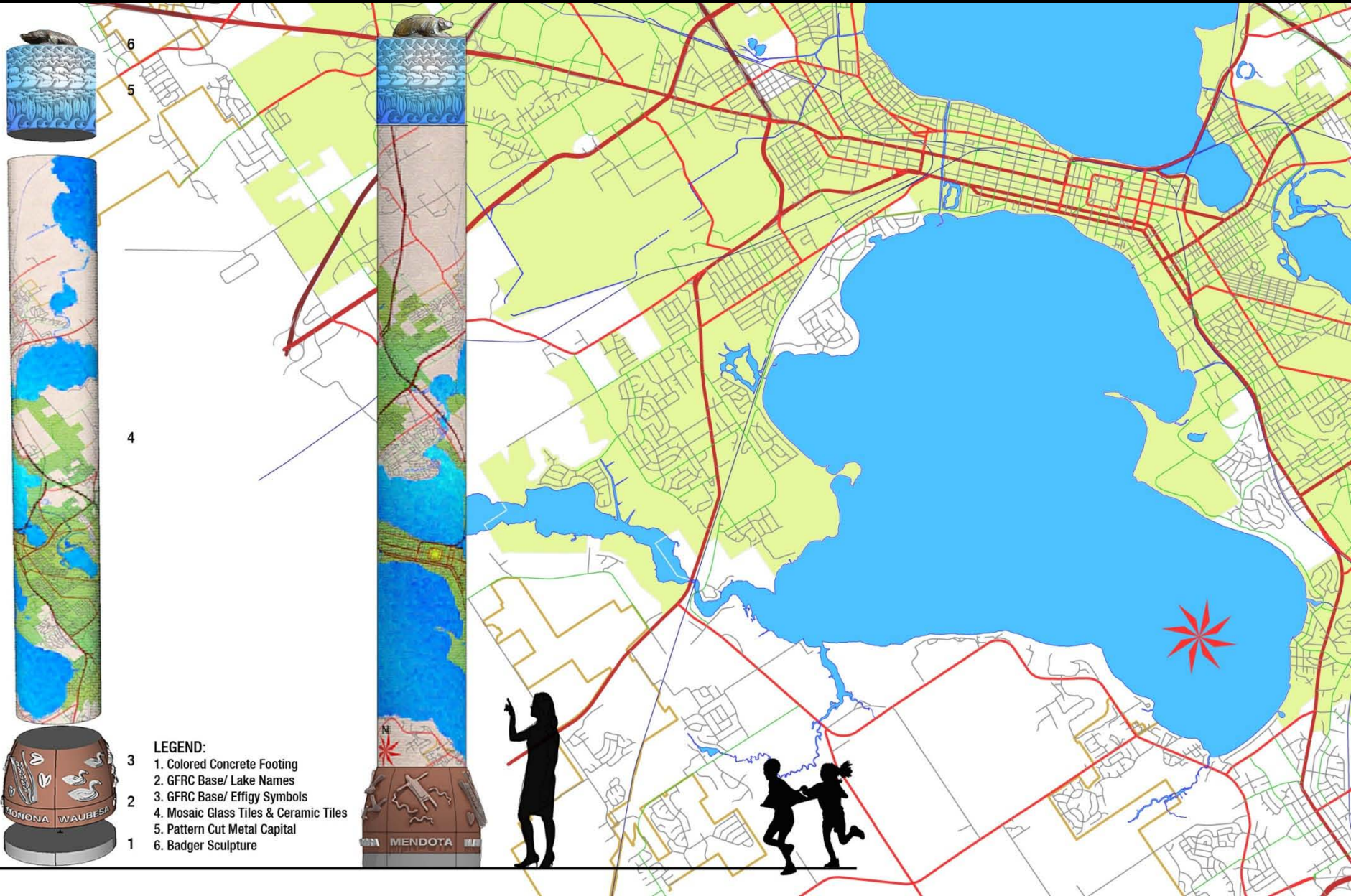
South



West

MADISON MARKER: LAND OF FIVE LAKES COLUMN



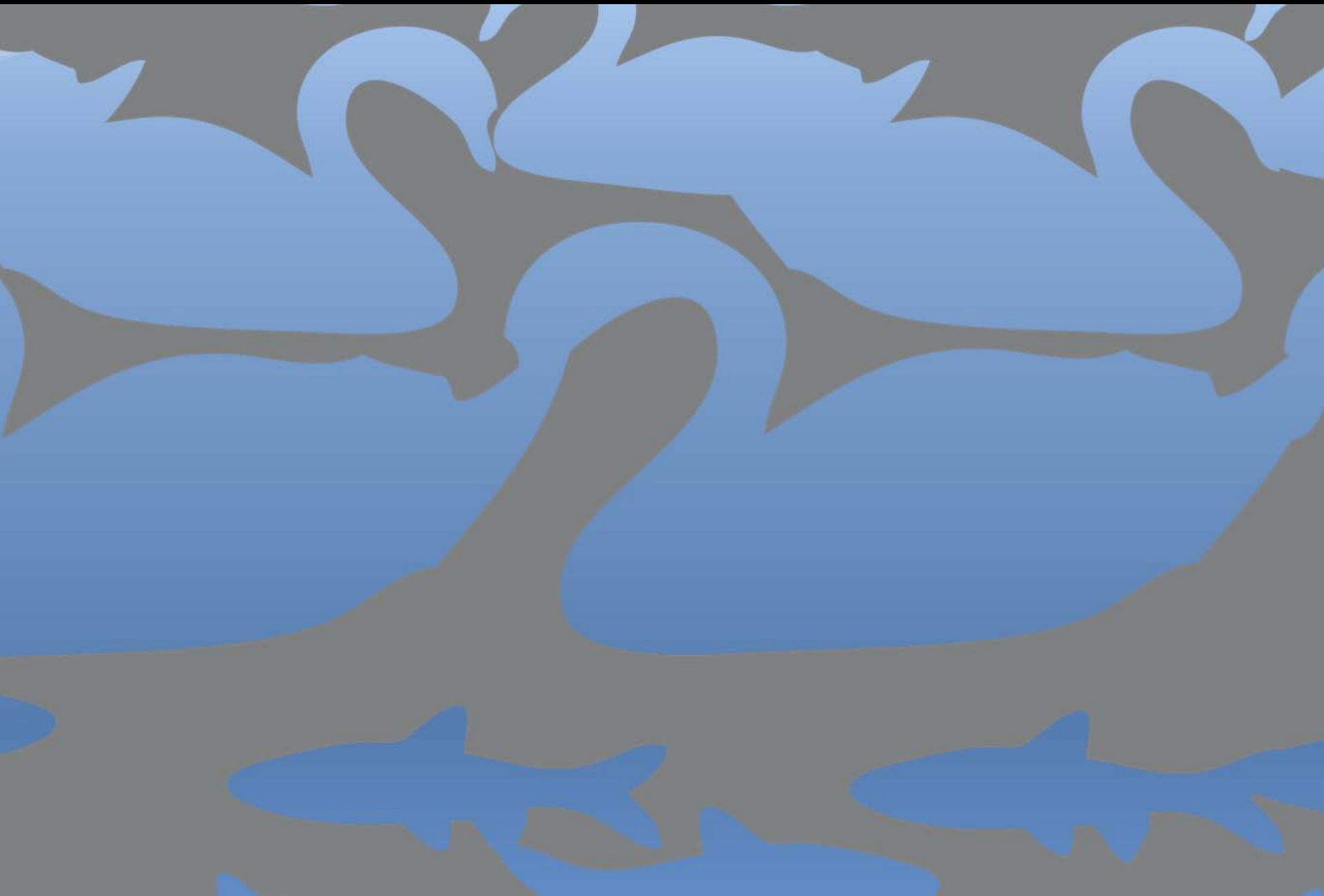


LEGEND:

- 3 1. Colored Concrete Footing
- 2 2. GFRC Base/ Lake Names
- 2 3. GFRC Base/ Effigy Symbols
- 4 4. Mosaic Glass Tiles & Ceramic Tiles
- 5 5. Pattern Cut Metal Capital
- 1 6. Badger Sculpture

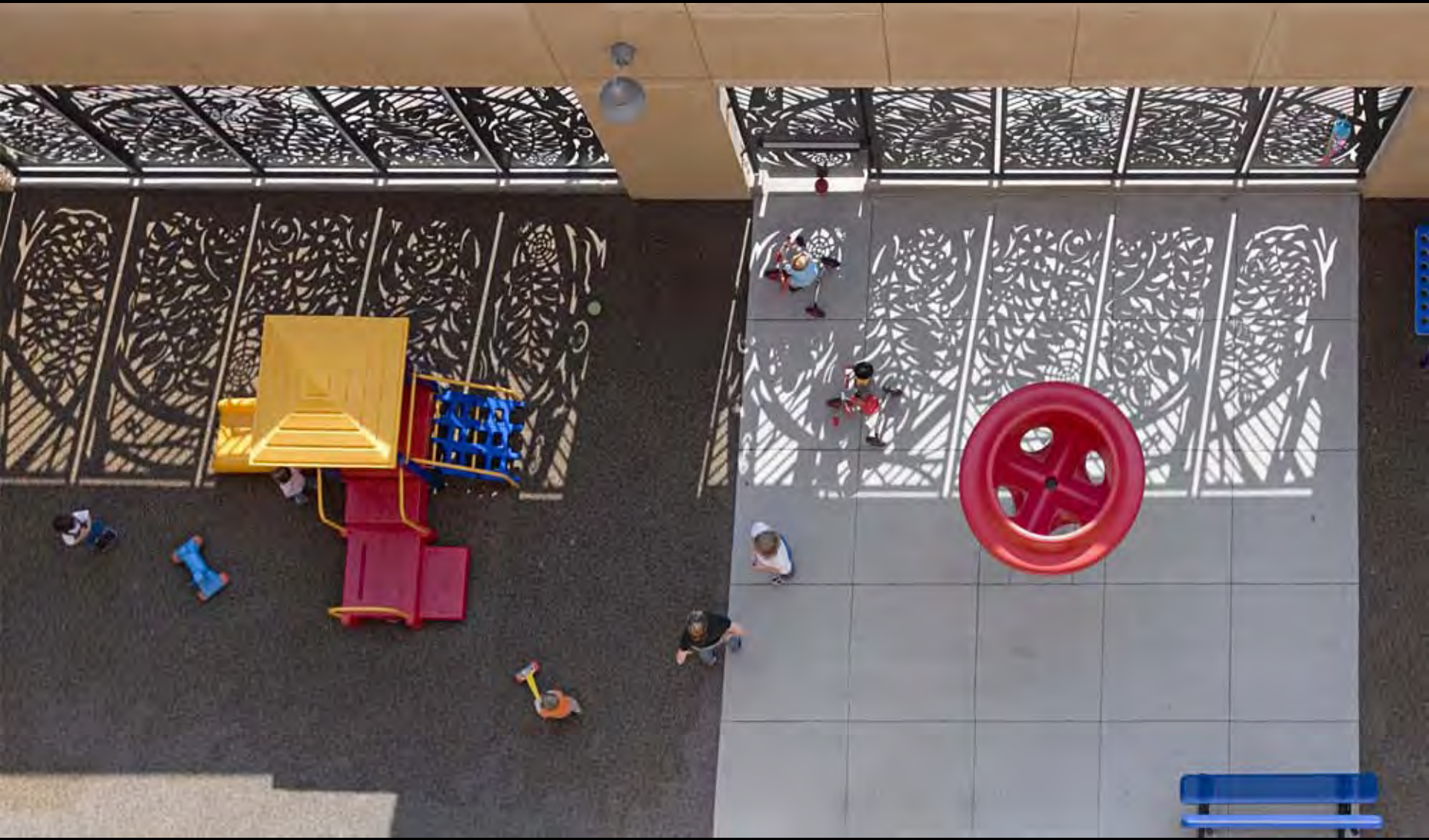


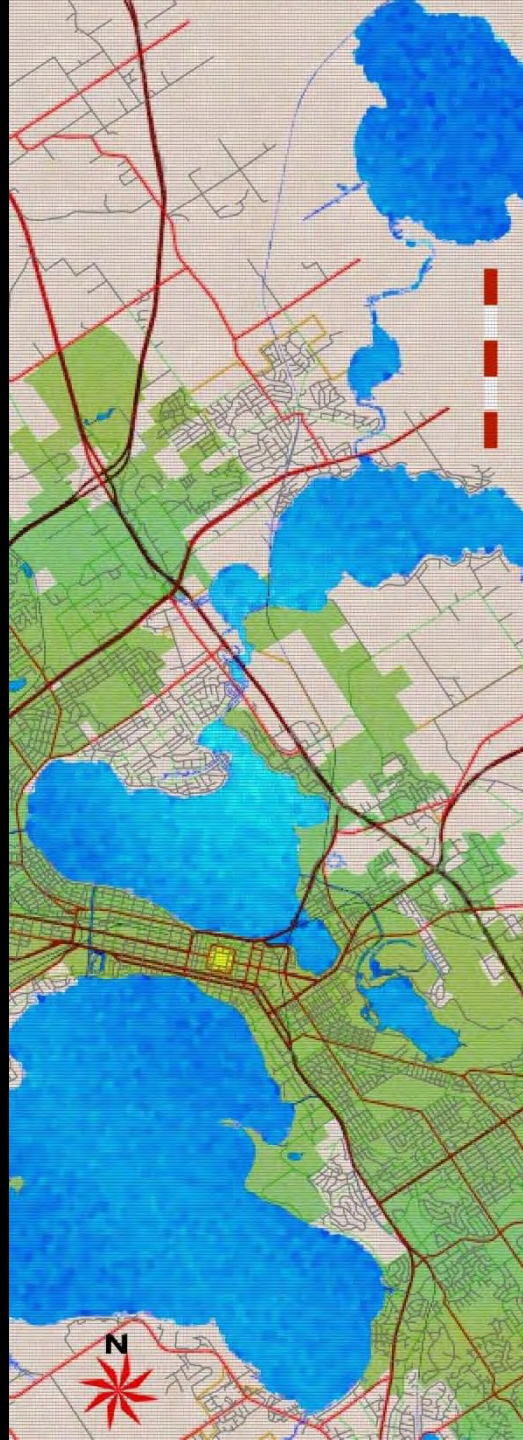


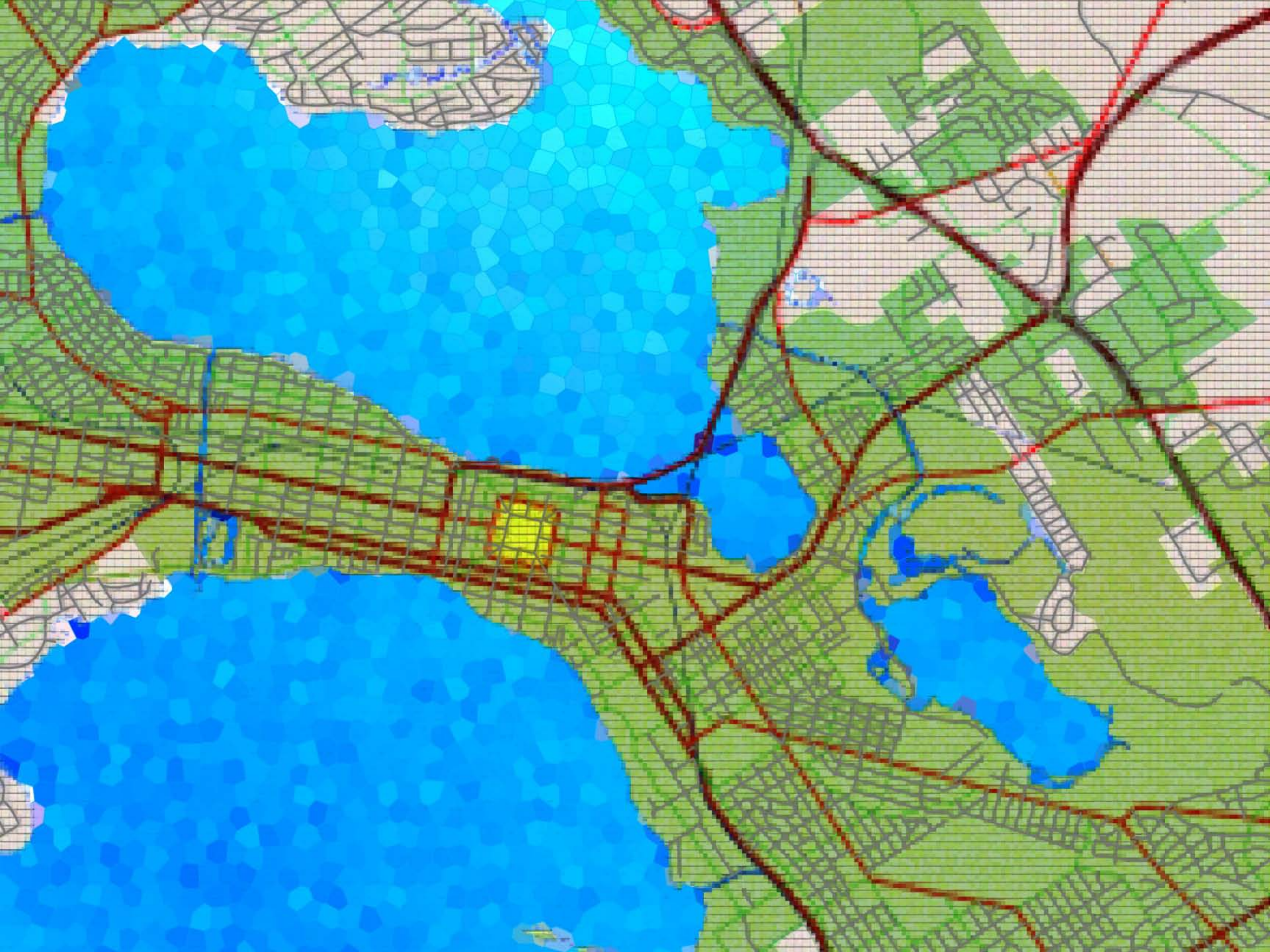








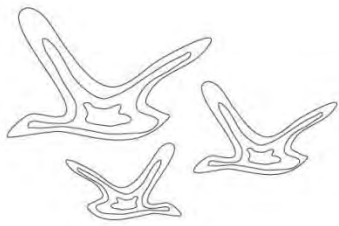








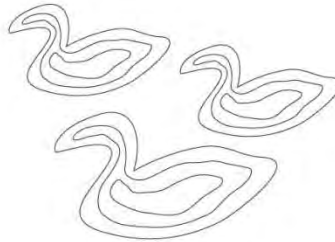
GFRC Base (Glass Fiber Reinforce Concrete)



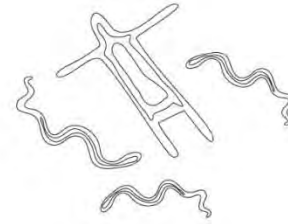
WINGRA



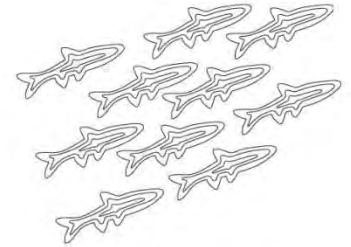
MONONA



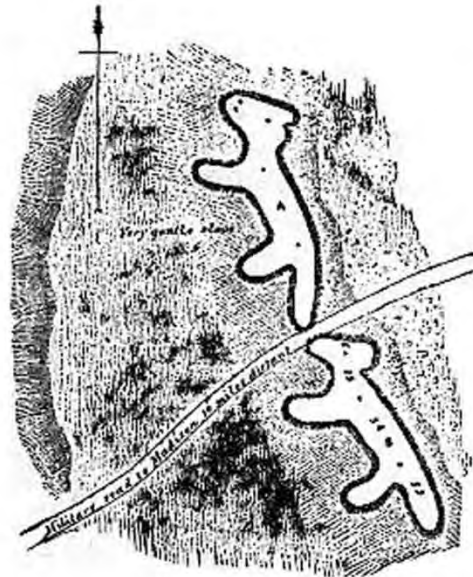
WAUBESA



MENDOTA



KEGONSA



Effigy Mounds.





AGRICULTURE



















PRELIMINARY CONCEPT BUDGET

PRIMARY SCULPTURE	COST
Foundation system & underground electrical (excavation & footing)	\$13,000
Concrete shaft / cylinder	\$10,000
Sidewalk reconstruction	\$7,000
Glass tiles (map)	\$10,000
Ceramic tiles (water)	\$10,000
Tiles around base	\$10,000
Tile / Ceramic Installation	\$10,000
Metal cap (illuminated)	\$5,000
Lighting	\$5,000
RDG Fee (travel, lodging, workshops, design refinement, engineering, detailing, contracting, coordination, & construction administration)	\$20,000
TOTAL	\$100,000

OPTIONAL STAGE INSTALLATION (COMPANION PIECE)	COST
Metal clouds	\$13,000
Installation	\$7,000
Lighting (assuming power is available at the location)	\$5,000
TOTAL	\$25,000





more

