

# 139 WEST WILSON

# INFORMATIONAL MEETING OBJECTIVES

- Discuss efficacy of design updates to meet 08/26/2024 Staff Report Conditions of Approval 1–5
  1. ...Revise end/corner unit configurations to locate louvers on side elevations, not on street facing elevations...
  2. ...Revise base of building to create a higher level of visual interest...
  3. ...Revise top of building to create more visual distinction
  4. ...Add vertical articulation and or modulation along the east and west facades
  5. Submit further study on facade material texture / pattern
- Review commission feedback on site planning issues and site circulation
- Receive any other feedback from the commission to help design team provide a solution that the commission would recommend for approval

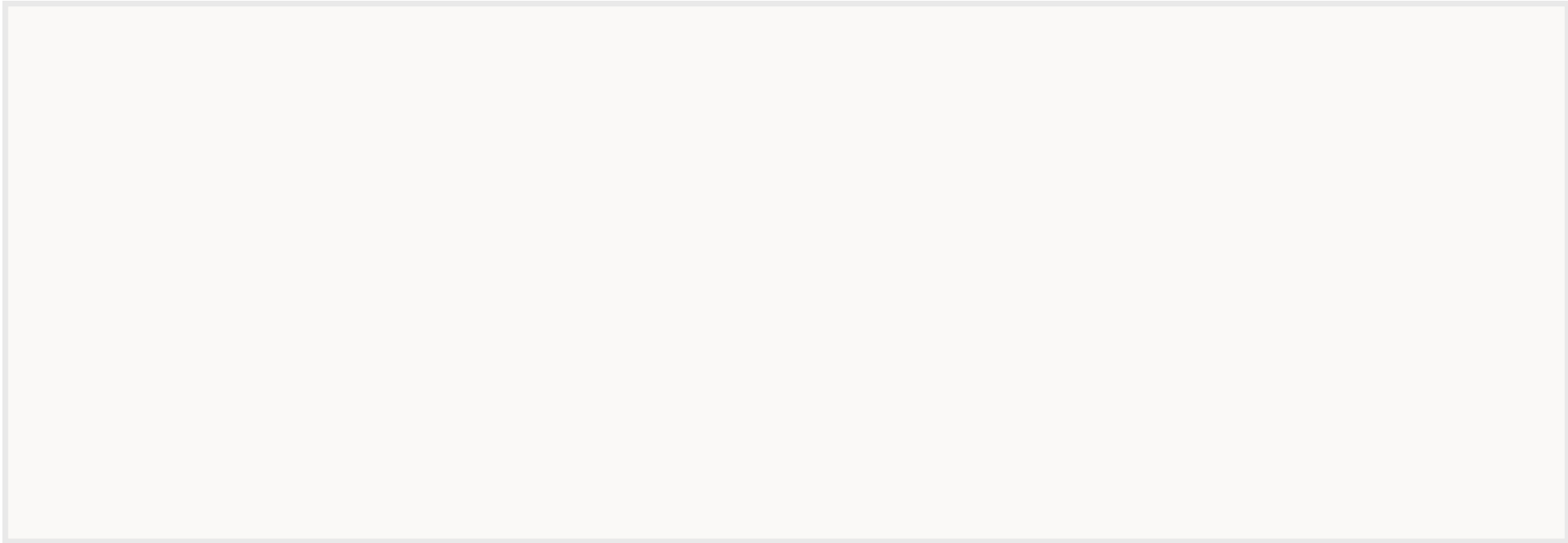


DARK BRONZE ANODIZED ALUMINUM FRAME DUAL PANE 1" INSULATED GLAZING WITH FLUSH- INTEGRATED LOUVER PANELS WHERE SHOWN. TYP.

WALNUT FINISH ALUMINUM PANELS.  
See note 7 and Sheet A301.



1 South  
3/32" = 1'-0"



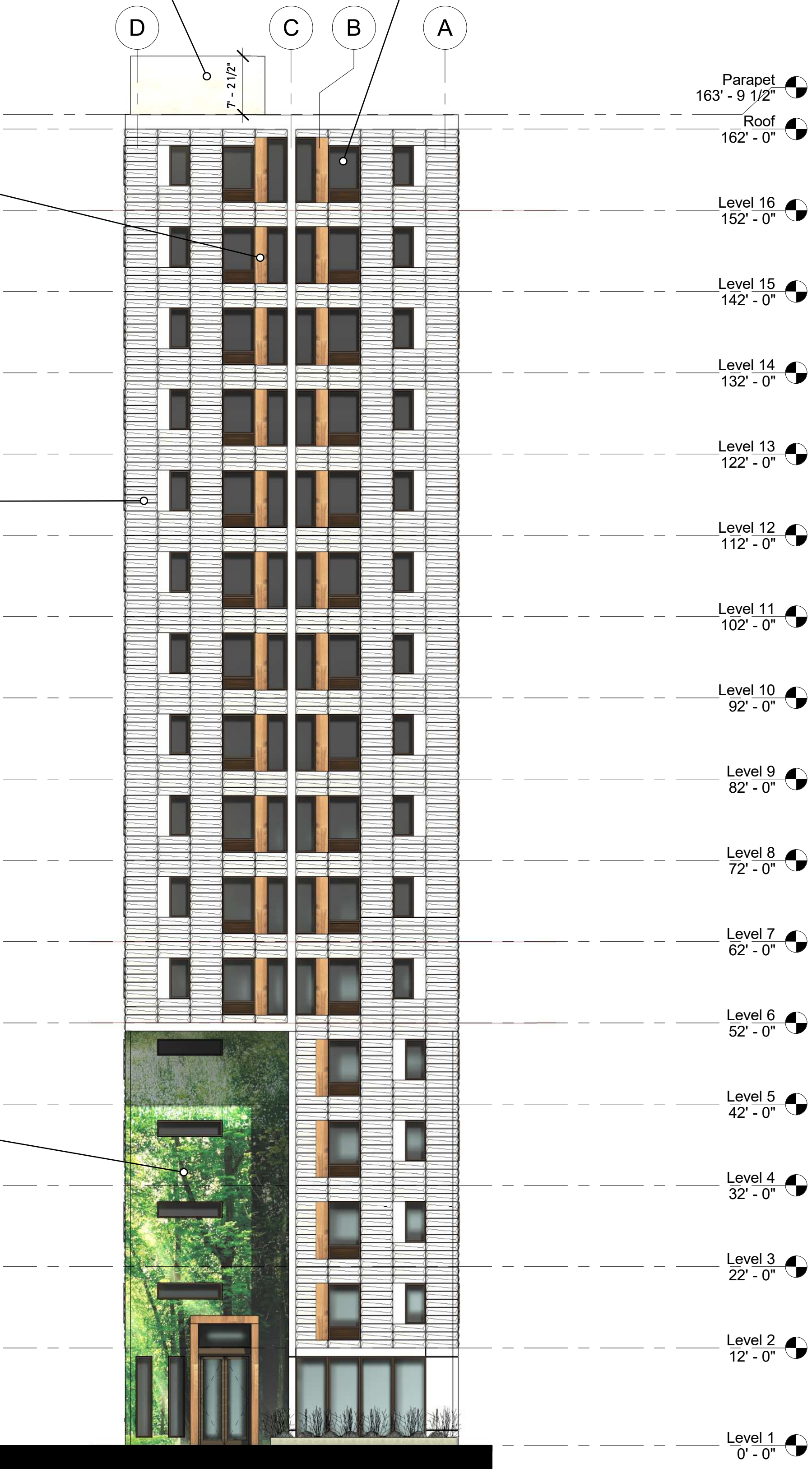
Acid etched concrete wall panel. Color: PEARL WHITE

ENCLOSED ELEVATOR PENTHOUSE AND EGRESS STAIR FOR FIRE DEPARTMENT ACCESS.

WALNUT FINISH ALUMINUM PANELS.  
See note 7 and Sheet A301.

ACID ETCHED CONCRETE WALL PANELS WITH 1' X 4' PROFILED FACETS.  
COLOR TO BE PEARL WHITE. TYP.

INTERNALLY LIT WALL ART ENCLOSURE.  
See Note 5 this sheet



2 North  
3/32" = 1'-0"

DARK BRONZE ANODIZED ALUMINUM FRAME DUAL PANE 1" INSULATED GLAZING WITH FLUSH- INTEGRATED LOUVER PANELS WHERE SHOWN. TYP.

GENERAL MATERIAL NOTES:

- 1.) The glass on all windows and doors shall be slightly tinted to allow views into and out of the interior.
- 2.) The primary exterior material will be an highly durable acid etched concrete wall panel by Wells Infinite Facades, typically 10' H x 32' W, with a custom faceted profile.
- 3.) The 1' x 4' faceting will occur on all facades.
- 4.) The facets incorporate a horizontal and vertical articulation and twist within each unit, creating a pattern and texture change throughout the facade.
- 5.) Wall art enclosures: See sheets A302; A302.1, and A302 for details. The art images would be color jet printed on 4' x 10' Di-bond composite panels, mounted behind a glass curtain wall and internally lit with an LED neon tube. Glass to be 48" w x 120" h 1/4" clear tempered. These would occur in the following locations:
  - Recessed Wilson Street entry condition with a 51 feet tall, L-shaped (10' x 20') wide.
  - The interior walls of the zip car garage to utilize same wall assembly without glass curtain wall.
- 6.) Aluminum T&G rain-screen panel. 18"W x 84"H. attached directly to wall panel. Wood grain walnut finish. Longboard Architectural products. See details and product sheet on Sheet A301.

Revisions:	
UDC	12/11/2023
P.C.	12/11/2023
Project #:	21.000
Issued For:	Review
Date:	12/11/2023



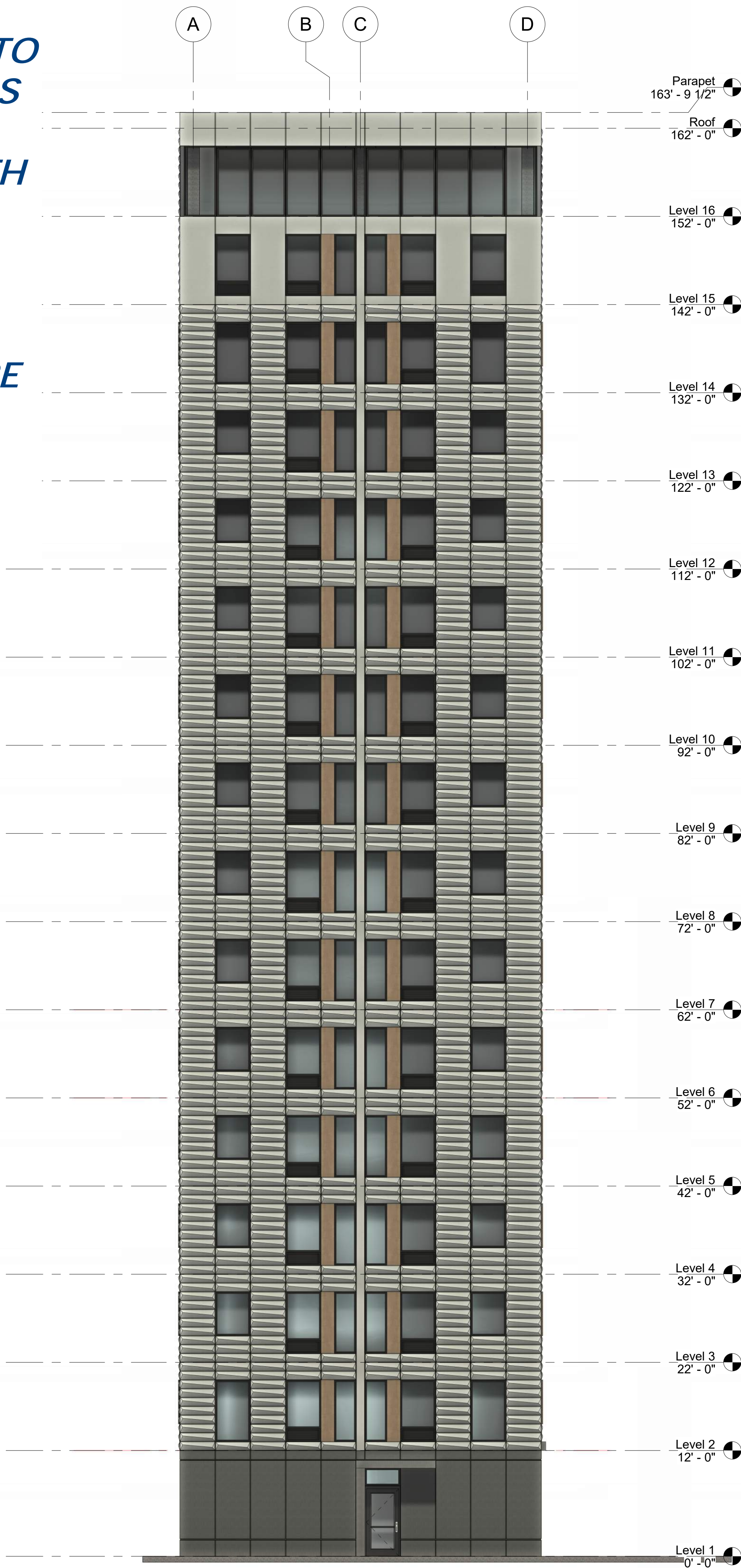
UPDATE

ITEMS ADDRESSED:

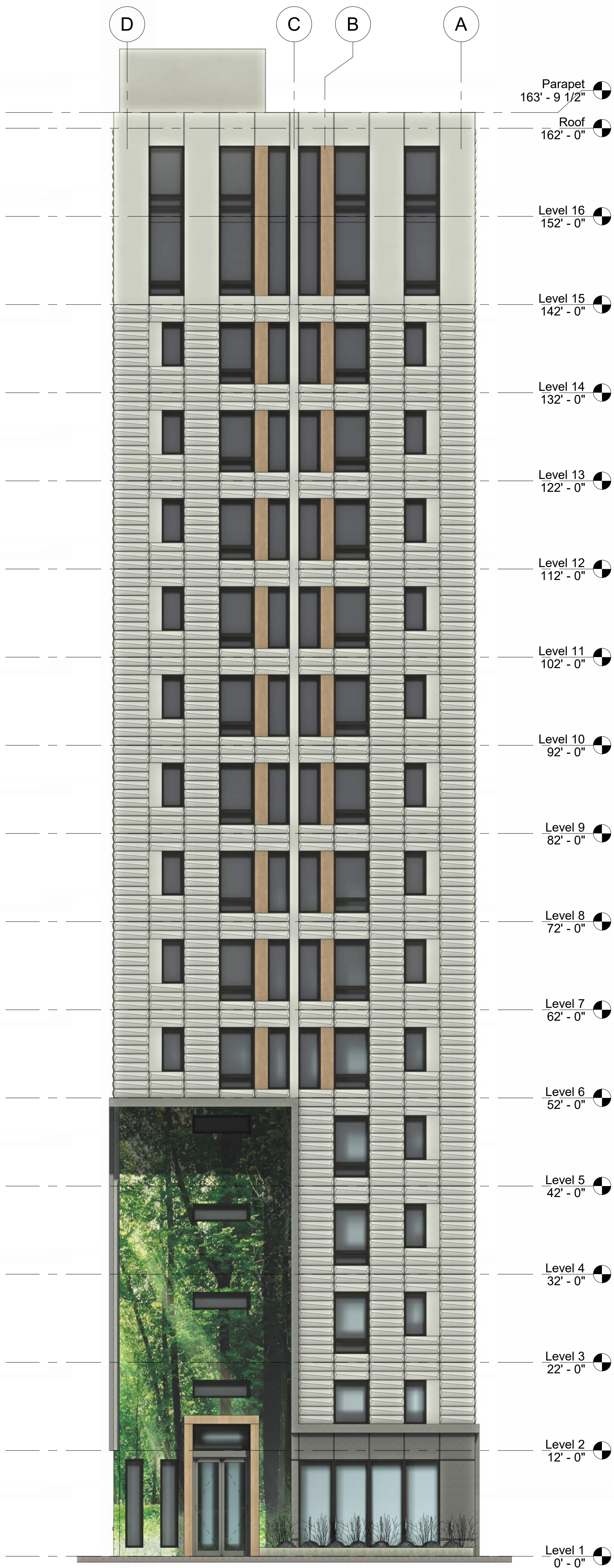
RELOCATION OF STREET  
FACING HVAC LOUVERS TO  
EAST AND WEST FACADES

CONTRASTING BASE WITH  
REVISED DATUM AND  
PRECAST PROJECTION

DOUBLE-HEIGHT  
SPRESSION AND TEXTURE  
CHANGE AT TOP OF  
BUILDING



① South  
1/8" = 1'-0"



② North  
1/8" = 1'-0"

Revisions:	
UDC	12/11/2023
P.C.	12/11/2023
Project #:	21.000
Issued For:	Review
Date:	12/11/2023





NORTH ELEVATION



NORTHEAST CORNER

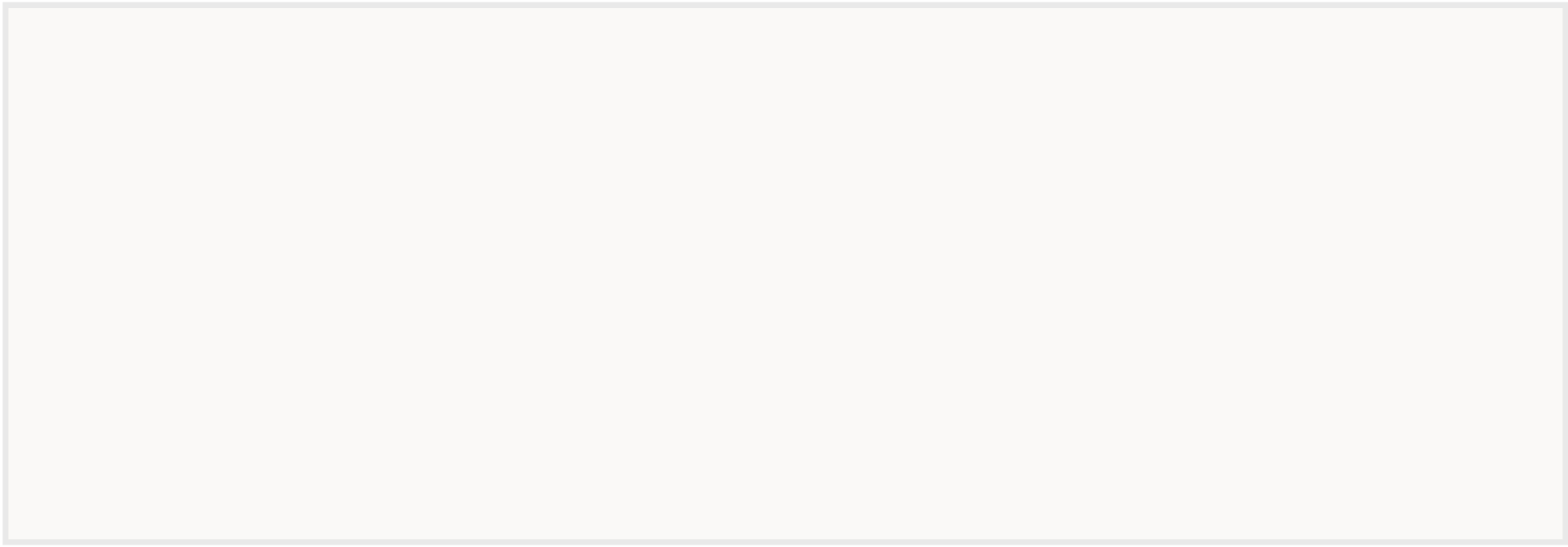
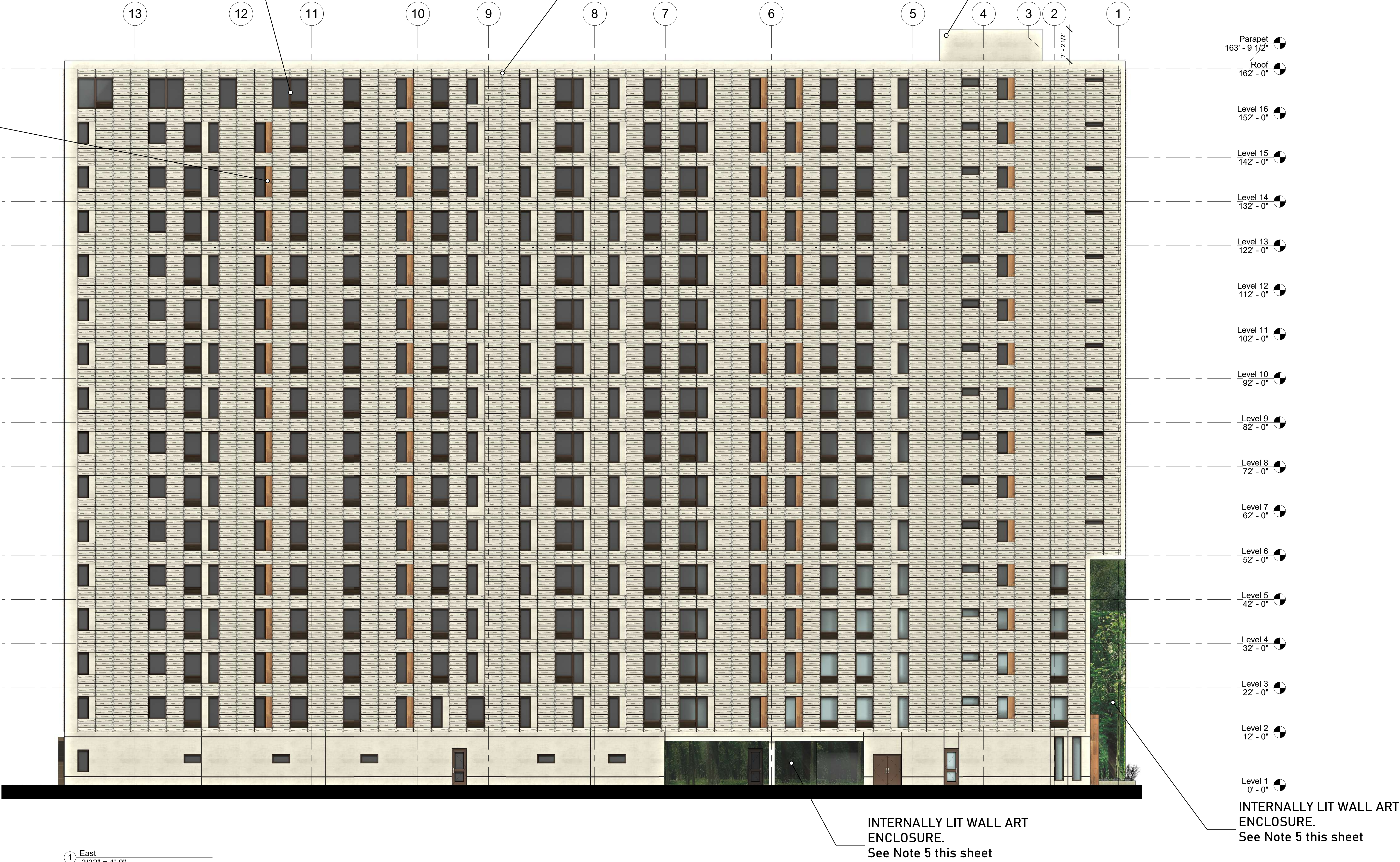


WALNUT FINISH ALUMINUM PANELS.  
See note 7 and Sheet A301.

DARK BRONZE ANODIZED ALUMINUM FRAME DUAL PANE 1" INSULATED GLAZING WITH FLUSH- INTEGRATED LOUVER PANELS WHERE SHOWN. TYP.

ACID ETCHED CONCRETE WALL PANELS WITH 1' X 4' PROFILED FACETS. COLOR TO BE PEARL WHITE. TYP.

ENCLOSED ELEVATOR PENTHOUSE AND EGRESS STAIR FOR FIRE DEPARTMENT ACCESS.



Acid etched concrete wall panel. Color: PEARL WHITE

GENERAL MATERIAL NOTES:

- 1.) The glass on all windows and doors shall be slightly tinted to allow views into and out of the interior.
- 2.) The primary exterior material will be an highly durable acid etched concrete wall panel by Wells Infinite Facades, typically 10' H x 32' W, with a custom faceted profile.
- 3.) The 1' x 4' faceting will occur on all facades.
- 4.) The facets incorporate a horizontal and vertical articulation and twist within each unit, creating a pattern and texture change throughout the facade.
- 5.) Wall art enclosures: See sheets A302; A302.1, and A302 for details. The art images would be color jet printed on 4' x 10 ' Di-bond composite panels, mounted behind a glass curtain wall and internally lit with an LED neon tube. Glass to be 48" w x 120" h 1/4" clear tempered. These would occur in the following locations:
  - Recessed Wilson Street entry condition with a 51 feet tall, L-shaped (10' x 20') wide.
  - The interior walls of the zip car garage to utilize same wall assembly without glass curtain wall.
- 6.) Aluminum T&G rain-screen panel. 18"W x 84"H. attached directly to wall panel. Wood grain walnut finish. Longboard Architectural products. See details and product sheet on Sheet A301.



UPDATE

ITEMS ADDRESSED:

ERODED CORNERS  
AND CHANGE OF  
TEXTURE AT TOP OF  
BUILDING

DISTINCTION AT  
BASE OF BUILDING

INCREASED  
GLAZING AT TOP  
FLOOR FACING LAKE

REVISED GLAZING  
PATTERN TO CREATE  
REPETITION



① East  
3/32" = 1'-0"

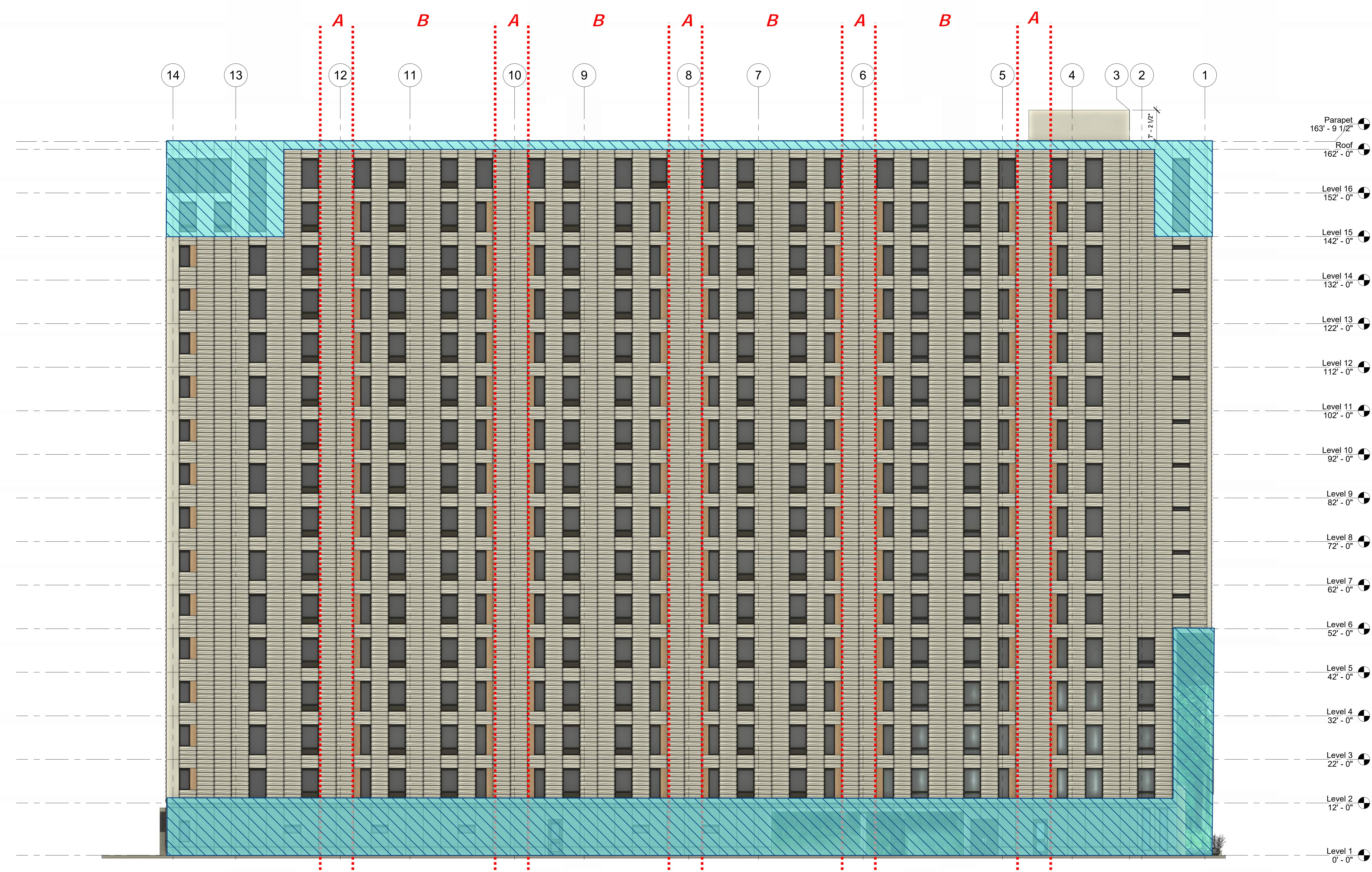
progression  
139 West Wilson  
Madison, Wisconsin  
East Elevation

Revisions:	
UDC	12/11/2023
P.C.	12/11/2023
Project #:	21.000
Issued For:	Review
Date:	12/11/2023



UPDATE

RYTHMN AND  
LAYERING SCHEME



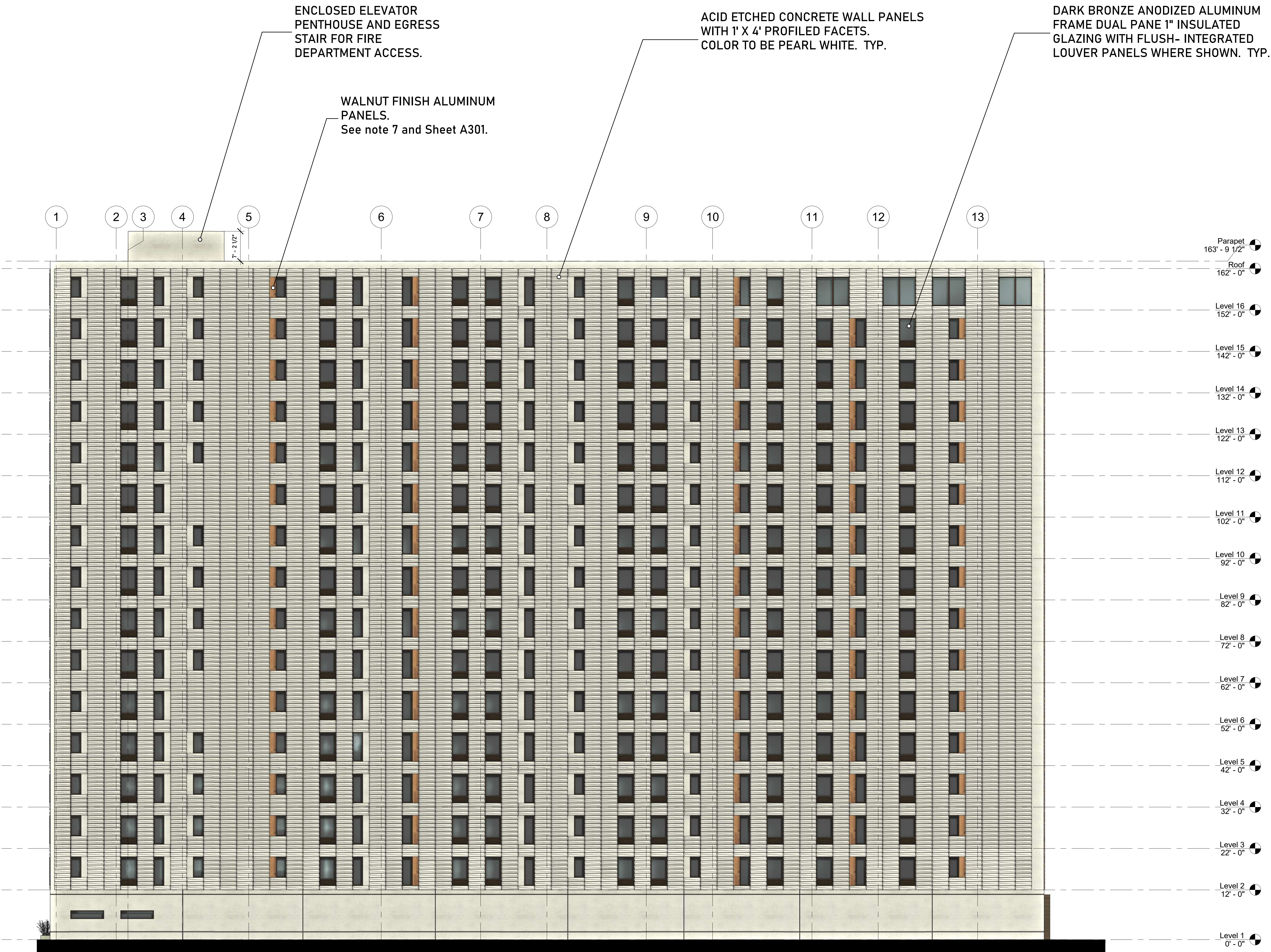
progression

139 West Wilson  
Madison, Wisconsin

East Elevation

Revisions:	
UDC	12/11/2023
P.C.	12/11/2023
Project #:	21.000
Issued For:	Review
Date:	12/11/2023





Acid etched concrete wall panel. Color: PEARL WHITE

GENERAL MATERIAL NOTES:

- 1.) The glass on all windows and doors shall be slightly tinted to allow views into and out of the interior.
- 2.) The primary exterior material will be an highly durable acid etched concrete wall panel by Wells Infinite Facades, typically 10' H x 32' W, with a custom faceted profile.
- 3.) The 1' x 4' faceting will occur on all facades.
- 4.) The facets incorporate a horizontal and vertical articulation and twist within each unit, creating a pattern and texture change throughout the facade.
- 5.) Wall art enclosures: See sheets A302; A302.1, and A302 for details. The art images would be color jet printed on 4' x 10 ' Di-bond composite panels, mounted behind a glass curtain wall and internally lit with an LED neon tube. Glass to be 48" w x 120" h 1/4" clear tempered. These would occur in the following locations:
  - Recessed Wilson Street entry condition with a 51 feet tall, L-shaped (10' x 20') wide.
  - The interior walls of the zip car garage to utilize same wall assembly without glass curtain wall.
- 6.) Aluminum T&G rain-screen panel. 18"W x 84"H. attached directly to wall panel. Wood grain walnut finish. Longboard Architectural products. See details and product sheet on Sheet A301.



UPDATE

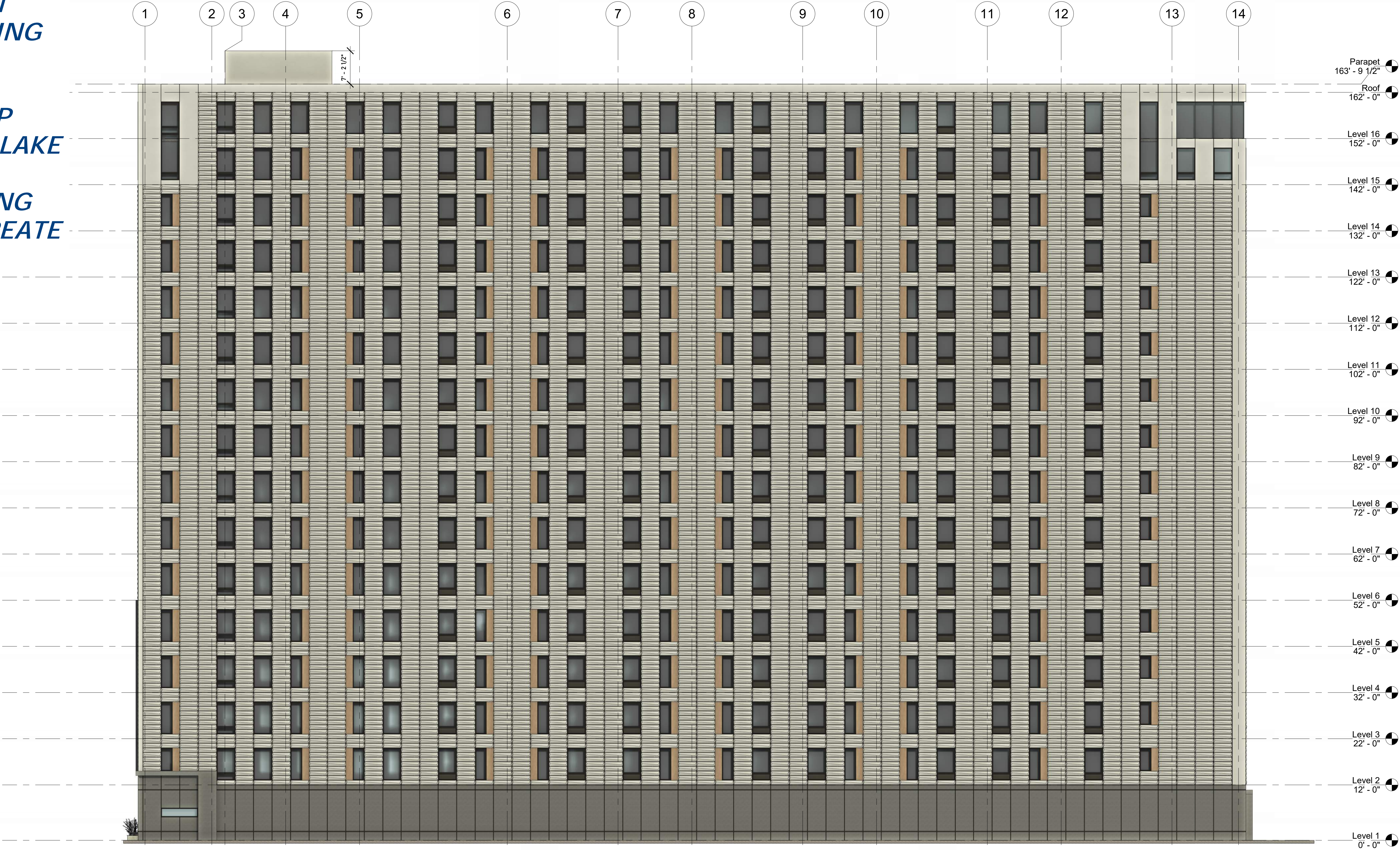
ITEMS ADDRESSED:

ERODED CORNERS  
AND CHANGE OF  
TEXTURE AT TOP OF  
BUILDING

DISTINCTION AT  
BASE OF BUILDING

INCREASED  
GLAZING AT TOP  
FLOOR FACING LAKE

REVISED GLAZING  
PATTERN TO CREATE  
REPETITION



① West  
3/32" = 1'-0"

progression

139 West Wilson  
Madison, Wisconsin

West Elevation

Revisions:	
UDC	12/11/2023
P.C.	12/11/2023
Project #:	21.000
Issued For:	Review
Date:	12/11/2023





SOUTH ELEVATION



SOUTHEAST ELEVATION



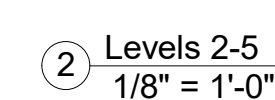
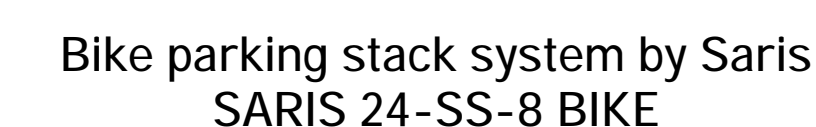
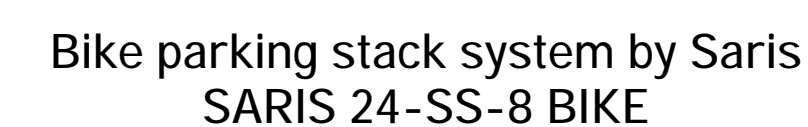
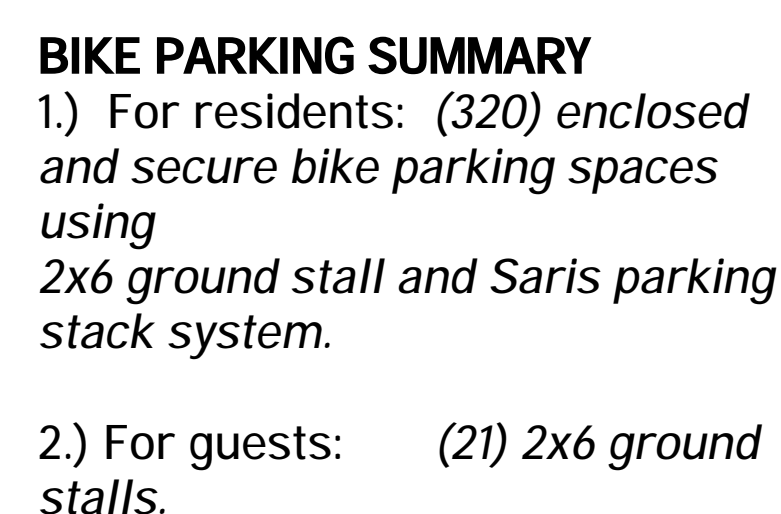
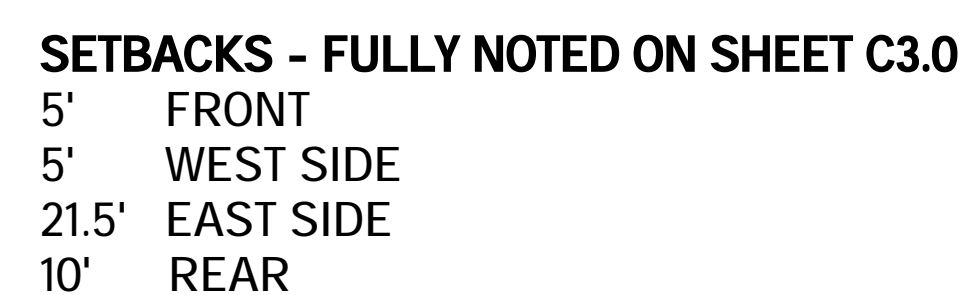


CLOSE-UP VIEW AT ENTRY



CLOSE-UP VIEW AT PATIO





Revisions:	
UDC	12/11/2023
P.C.	12/11/2023
P.C.	7.15.2024
Project #:	21.000
Issued For:	Review
Date:	12/11/2023