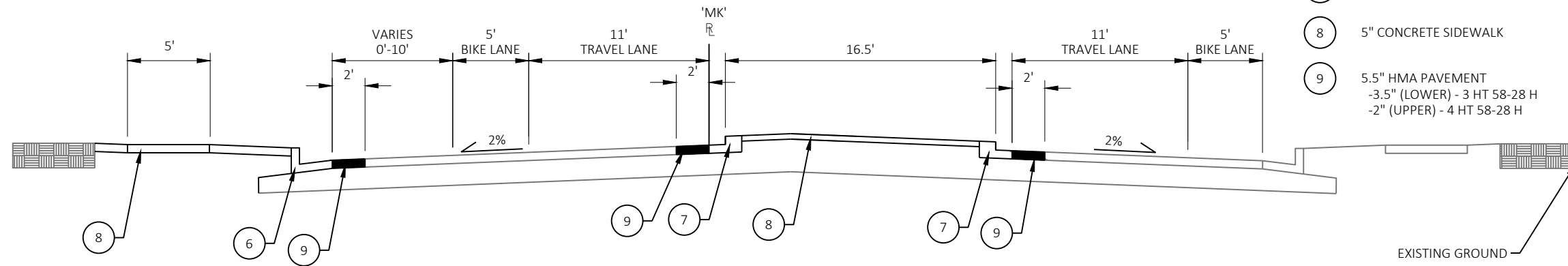
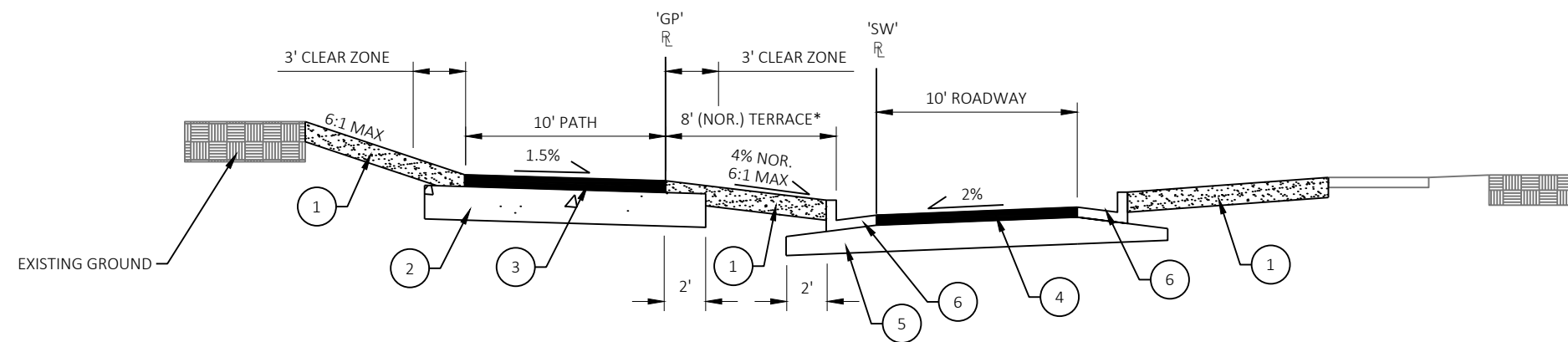


LEGEND

- ① TERRACE RESTORATION (TYP. FOR ALL DISTURBED AREAS)
- ② 8" CRUSHED AGGREGATE BASE COURSE (GRADATION NO. 2)
- ③ 3" HMA PAVEMENT 4 LT 58-28 S
- ④ 3.5" HMA PAVEMENT 4 LT 58-28S
- ⑤ 10" CRUSHED AGGREGATE BASE COURSE (GRADATION NO. 2)
- ⑥ TYPE "A" CONCRETE CURB & GUTTER
- ⑦ TYPE "E" CONCRETE CURB & GUTTER
- ⑧ 5" CONCRETE SIDEWALK
- ⑨ 5.5" HMA PAVEMENT
-3.5" (LOWER) - 3 HT 58-28 H
-2" (UPPER) - 4 HT 58-28 H



FINISHED TYPICAL SECTION
MILWAUKEE STREET
STA. 60+67.13'MK' - STA. 64+78.97'MK'



FINISHED TYPICAL SECTION
STARKWEATHER DRIVE
STA. 100+00.00'SW' - STA. 110+00.00'SW'
GARVER PATH
STA. 16+97.23'GP' - STA. 25+00.00'GP'

* TERRACE VARIES 5'-8'
STA. 101+25.00'SW' - STA. 102+75.00'SW'

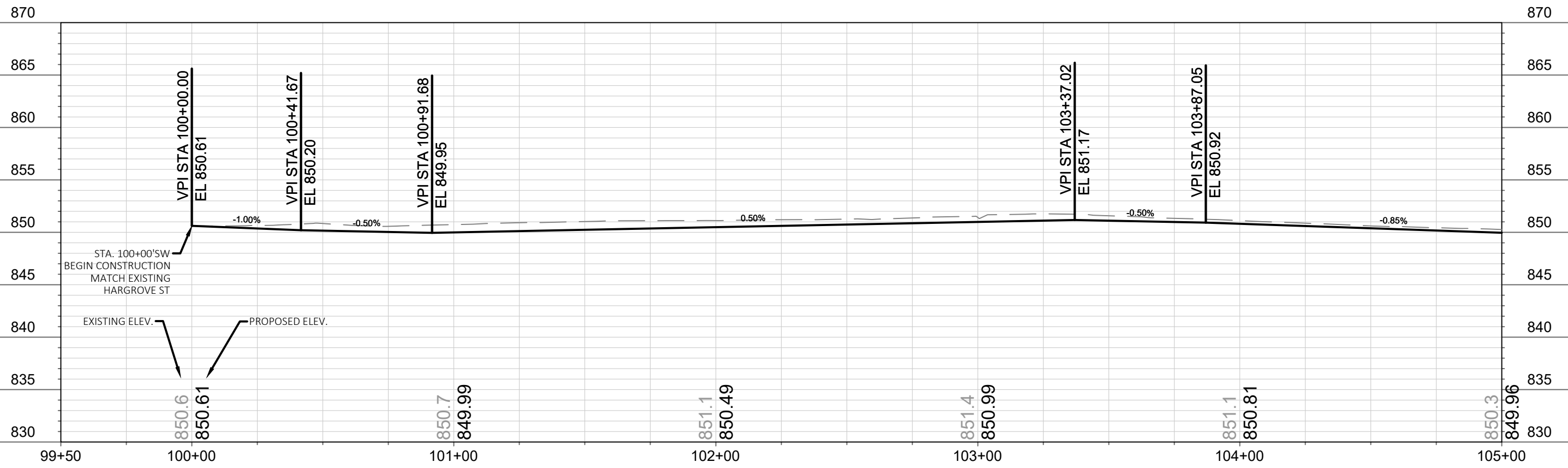
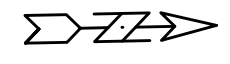
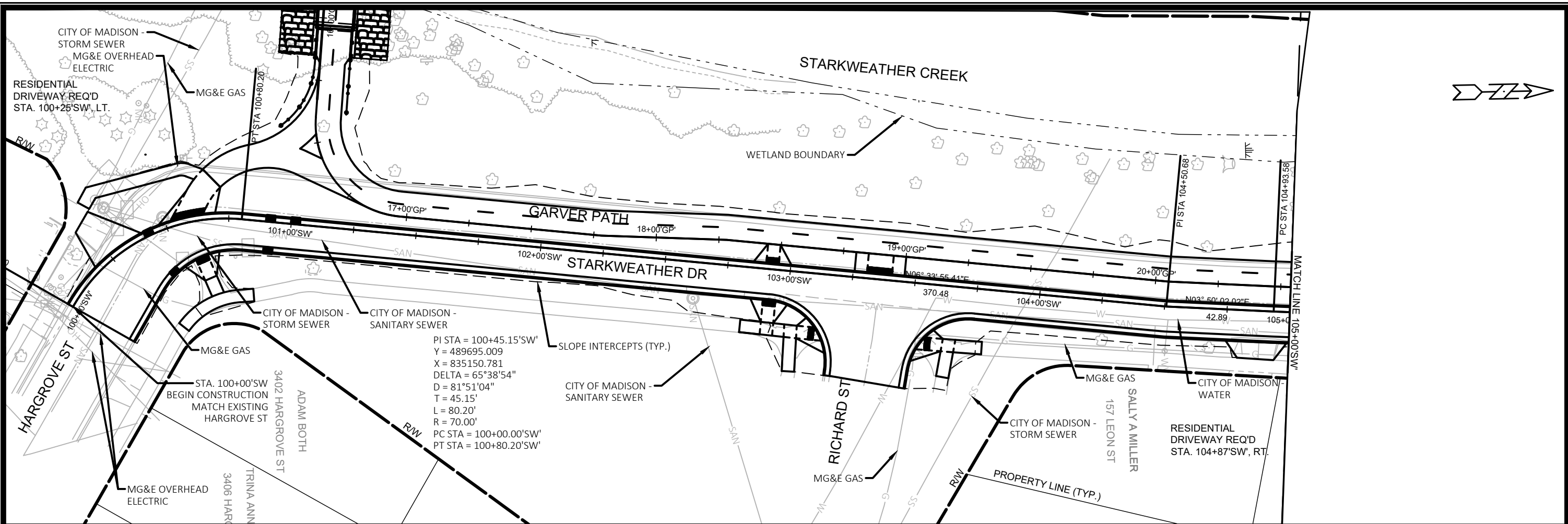
MARK	REVISION	DATE	BY
#####	#####	#####	#####
#####	#####	#####	#####
#####	#####	#####	#####
#####	#####	#####	#####

10160
MADISON, WI
8142
CONTRACT NO:

FINISHED TYPICAL SECTIONS
GARVER PATH
CITY OF MADISON



10160
TS-3

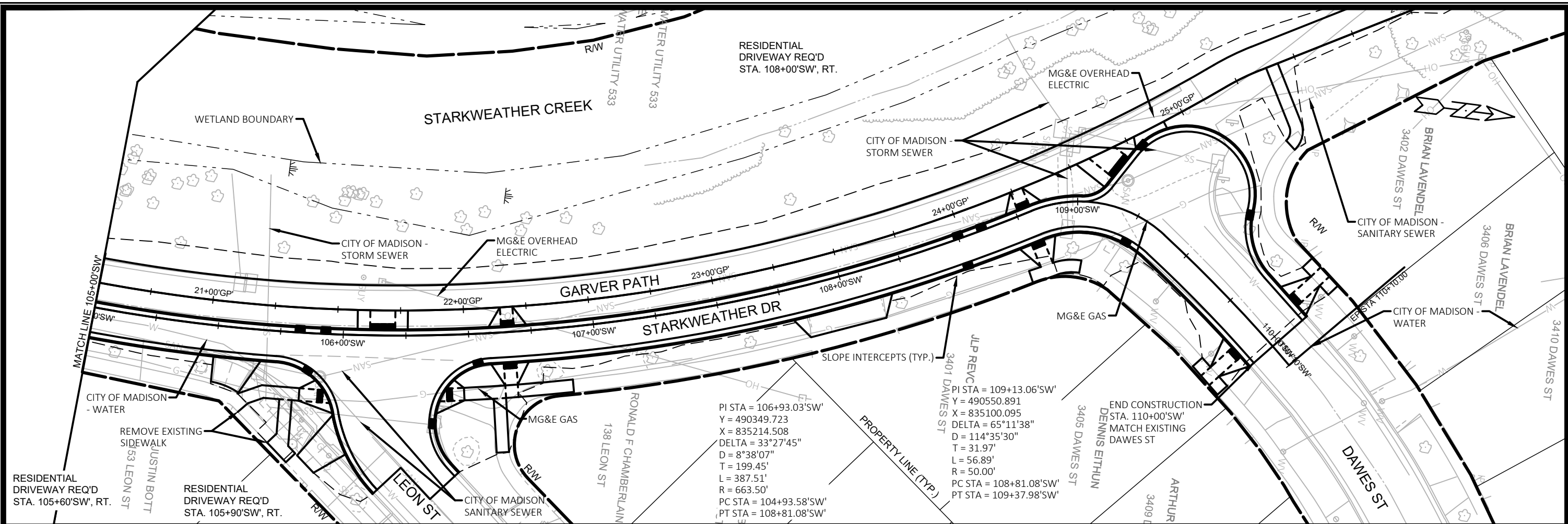


DATE	BY
REVISION	DATE
DESIGNED BY: JRM	DATE: 11/25/20
SCALE: 1"=40' FT	
MARK	10160
CONTRACT NO.	8142
PROJECT NO.	10160
PP-9	

10160
 MADISON, WI
 CONTRACT NO. 8142

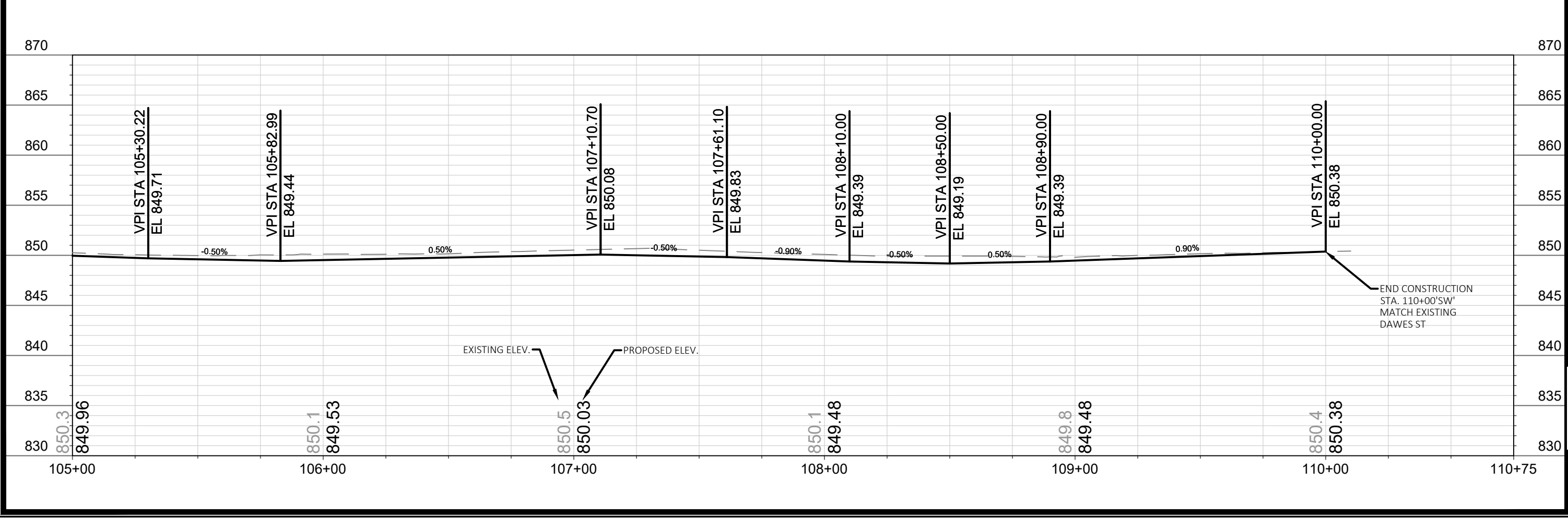


10160
 PP-9



PI STA = 106+93.03'SW'
 Y = 490349.723
 X = 835214.508
 DELTA = 33°27'45"
 D = 8°38'07"
 T = 199.45'
 L = 387.51'
 R = 663.50'
 PC STA = 104+93.58'SW'
 PT STA = 108+81.08'SW'

PI STA = 109+13.06'SW'
 Y = 490550.891
 X = 835100.095
 DELTA = 65°11'38"
 D = 114°35'30"
 T = 31.97'
 L = 56.89'
 R = 50.00'
 PC STA = 108+81.08'SW'
 PT STA = 109+37.98'SW'



DATE	BT
REVISION	###
MARK	###
Designed By: JRM	Date: 11/20/20
10160	Scale: 1"=40' FT
10160	PP-10

10160
 MADISON, WI
 CONTRACT NO: 8142
 PLAN AND PROFILE - STARKWEATHER DRIVE
 GARVER PATH
 CITY OF MADISON

10160
 PP-10