

Property Address	Number Units	Number Bedrooms	Lot Size	Built approximately
616 Mendota Ct.	12	23	13,552 sq ft.	1911
625 Mendota Ct	7	35	7,326 sq ft	1905
627 Mendota Ct	8	24	7,309 sq ft	1915
661 Mendota Ct	52	104	15,886 sq ft	1966
619 Mendota Ct SUBJECT	28	104	9,188 sq ft per plans 8,710 sq ft per assessors office	
626 Langdon St	100	102	22,374 sq ft	1972
625 Langdon St	30	89	8,712 sq ft	1999
614 Langdon St	30	78	7,620 sq ft	1999
619 Langdon St	15	38	8,778 sq ft	1998

11 car parking
8 car parking
9 car parking

No. 2 1-6-20

General Description

Slim, low profile design minimizes wind load requirements. Fixture sides are rugged cast aluminum with integral, weather-tight LED driver compartments and high performance aluminum heatsinks. Convenient, interlocking mounting method. Mounting housing is rugged die cast aluminum and mounts to 3 – 6" square or round pole. Fixture is secured by two (2) 5/16-18 UNC bolts spaced on 2" centers. Includes leaf/debris guard. Five year limited warranty on fixture.

Electrical

Modular design accommodates varied lighting output from high brightness, white, 6000K (+/- 500k per full fixture), minimum 75 CRI, long life LED sources. 120-277V 50/60 Hz, Class 1 LED drivers are standard. 347-480V 50/60 Hz driver is optional. LED drivers have power factor >90% and THD <20% of full load. Integral weather-tight electrical box with terminal strip for easy power hook-up.

Finish

Exclusive Colorfast DeltaGuard® finish features an E-Coat epoxy primer with an ultra-durable silver powder topcoat, providing excellent resistance to corrosion, ultraviolet degradation and abrasion. Bronze, black, white and platinum bronze powder topcoats are also available. The finish is covered by our 10 year limited warranty.

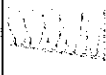
Labels

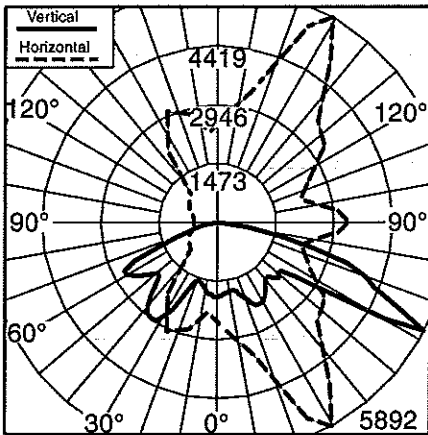
UL listed in the U.S. and Canada for wet locations and enclosure classified IP66 per IEC 529. Fixture also available with CE listing. RoHS compliant.

Patents

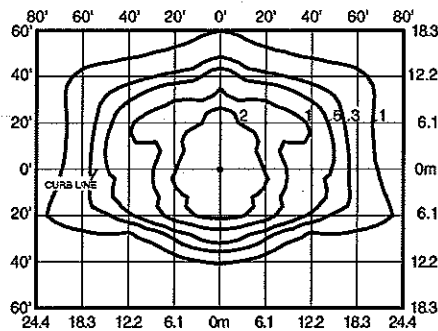
US Pat. D576,330; EC000693924; AU314711; AU314710; NZ408891; NZ408892; MX25801, CA Pat. Pend. German 20 2007 013 623.4. US and international patents pending. Design patents/regs. granted and pending.

Field-Installed Accessories

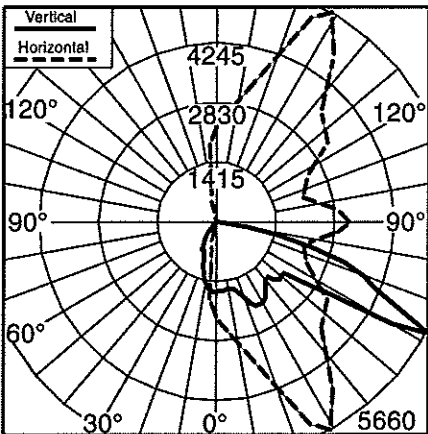
	Bird Spikes <input type="checkbox"/> XA-BRDSPK	No Photo Available	NEMA Kit w/ Cover <input type="checkbox"/> XA-NEMA1
--	--	---------------------------	---



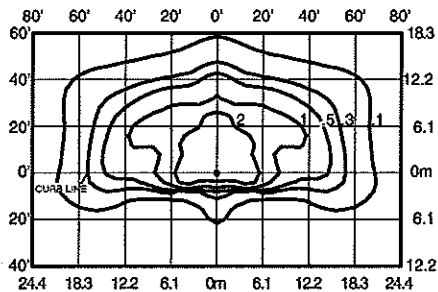
Independent Testing Laboratories certified test. Report No. ITL61147. Candlepower distribution curve of 6 light bar Type III LED luminaire with 10,500 initial delivered lumens operating at 350mA.



Isofootcandle plot of 6 light bar Type III LED luminaire at 20' A.F.G. Luminaire with 10,500 initial delivered lumens operating at 350mA. Initial FC at grade.



Independent Testing Laboratories certified test. Report No. ITL61148. Candlepower distribution curve of 6 light bar Type III LED luminaire with backlight control and 6,960 initial delivered lumens operating at 350mA.



Isofootcandle plot of 6 light bar Type III LED luminaire with backlight control at 20' A.F.G. Luminaire with 6,960 initial delivered lumens operating at 350mA. Initial FC at grade.

LED Area Light EPA Calculations

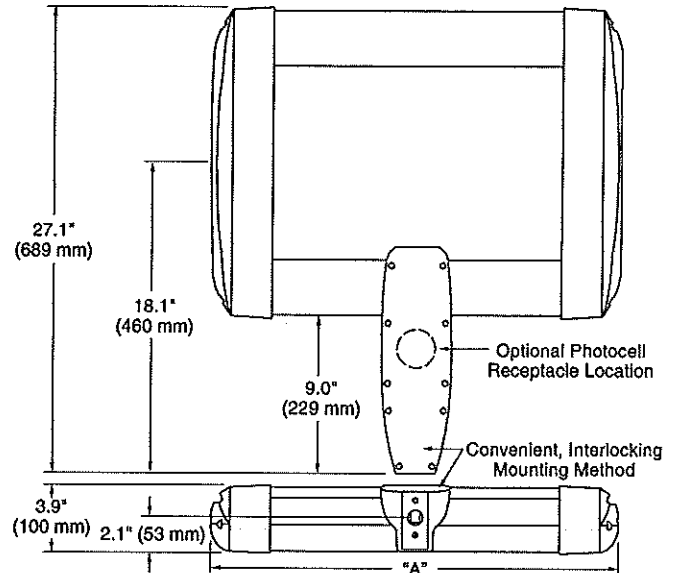
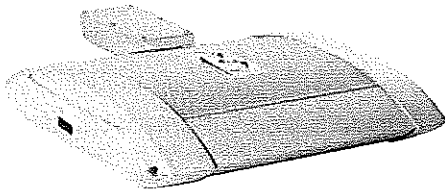
LIGHT BARS

	2	3	4	5	6	7	8	9	10	11	12
Fixed Arm Mount											
1 fixture	0.60	0.60	0.60	0.60	0.60	0.60	0.60	0.60	0.61	0.65	0.69
2 fixtures (180°)	1.20	1.20	1.20	1.20	1.20	1.20	1.20	1.20	1.21	1.29	1.38
2 fixtures (90°)	0.87	0.92	0.96	1.00	1.04	1.08	1.12	n/a	n/a	n/a	n/a
3 fixtures (90°)	1.47	1.51	1.55	1.60	1.64	1.68	1.72	n/a	n/a	n/a	n/a
4 fixtures (90°)	1.75	1.83	1.91	2.00	2.08	2.16	2.24	n/a	n/a	n/a	n/a



Nov 1 1670

Beta Catalog Number: BLD - ARE - - DA - - LED-B - - -



Notes:

Product Family	Housing Indicator	Optics	Mounting	Initial Delivered Lumens (00's)	LED Performance	Voltage	Color Options	Factory-Installed Options
BLD	ARE	<input type="checkbox"/> T3 ¹ <input type="checkbox"/> 3B ²	DA ³	<input type="checkbox"/> 017 <input type="checkbox"/> 034 <input type="checkbox"/> 051 <input type="checkbox"/> 068 <input type="checkbox"/> 085 <input type="checkbox"/> 102 <input type="checkbox"/> 119 <input type="checkbox"/> 136 <input type="checkbox"/> 153 <input type="checkbox"/> 170 <input type="checkbox"/> 187 <input type="checkbox"/> 204	LED-B	<input type="checkbox"/> UL (120-277V Universal) <input type="checkbox"/> UH (347-480V Universal) <input type="checkbox"/> 12 <input type="checkbox"/> 27 <input type="checkbox"/> 34	<input type="checkbox"/> SV <input type="checkbox"/> BZ <input type="checkbox"/> BK <input type="checkbox"/> WH <input type="checkbox"/> PB	If choosing more than one option, please type in manually on the lines provided above. <input type="checkbox"/> EM-Emergency ⁴ <input type="checkbox"/> F-Fuse <input type="checkbox"/> HL-Hi/Low (175/350/525, dual circuit input) ⁵⁻⁸ <input type="checkbox"/> P-Photocell ⁶ <input type="checkbox"/> R-NEMA Photocell Receptacle <input type="checkbox"/> TL-2-Level (175/525 w/ integrated sensor control) ^{5,7} <input type="checkbox"/> TL1-2-Level (350/700 w/ integrated sensor control) ^{5,7} <input type="checkbox"/> TL2-2-Level (0/350 w/ integrated sensor control) ^{7,9,10} <input type="checkbox"/> TL3-2-Level (0/525 w/ integrated sensor control) ^{5,7} <input type="checkbox"/> TL4-2-Level (0/700 w/ integrated sensor control) ^{5,7} <input type="checkbox"/> 35K-3500k Color Temperature ¹¹ <input type="checkbox"/> 43K-4300k Color Temperature ¹¹ <input type="checkbox"/> 525-525mA Drive Current ¹²

Footnotes

- 1-IESNA Type III distribution
- 2-IESNA Type III distribution with backlight control
- 3-Direct mounting arm
- 4-Emergency mode delivers 1 light bar 350mA lumen output, consult LED Emergency Spec Sheet for further details
- 5-Available for 1-6 light bar fixtures
- 6-Must specify voltage other than UL or UH
- 7-Refer to multi level spec sheet for more information
- 8-Sensor not included
- 9-May be ordered with 525mA drive current
- 10-Available for 1-12 light bar fixtures
- 11-Color temperature per fixture
- 12-Driver operates at 525mA instead of the standard 350mA providing a higher lumen output and a shorter life

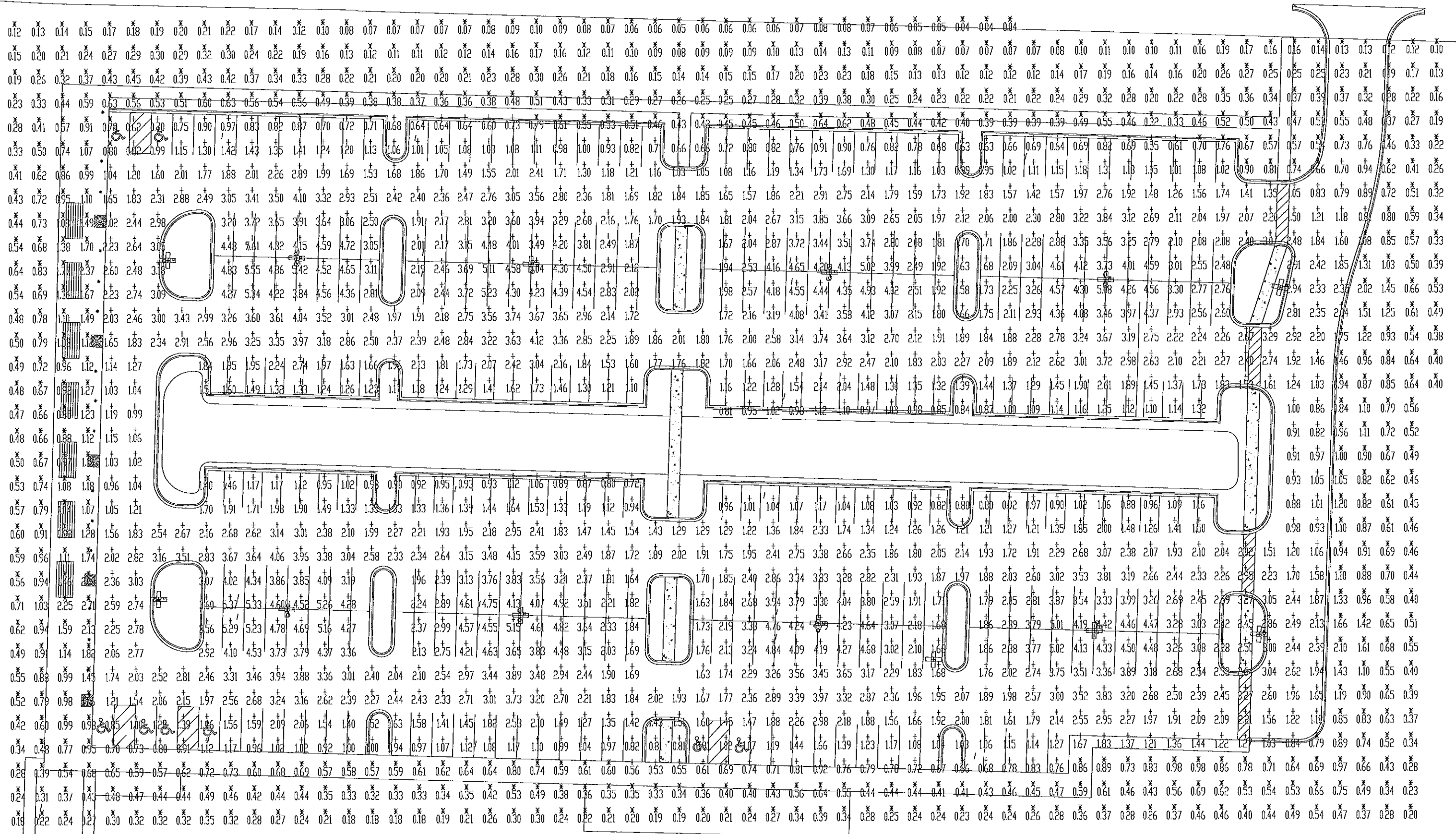
Output Multipliers			
Color Temperature		Lumen Multiplier	
6000K (Standard)		1.00	
4300K		0.80	
3500K		0.75	
Ambient Temperature (°C)		Lumen Multiplier	
-20		1.11	
10		1.04	
25		1.00	
40		0.96	
Drive Current	Lumen Multiplier	Power Multiplier	L ₇₀ Life* (hours)
175mA	0.6	0.5	> 150,000
350mA (Standard)	1.0	1.0	> 150,000
525mA	1.3	1.5	70,000

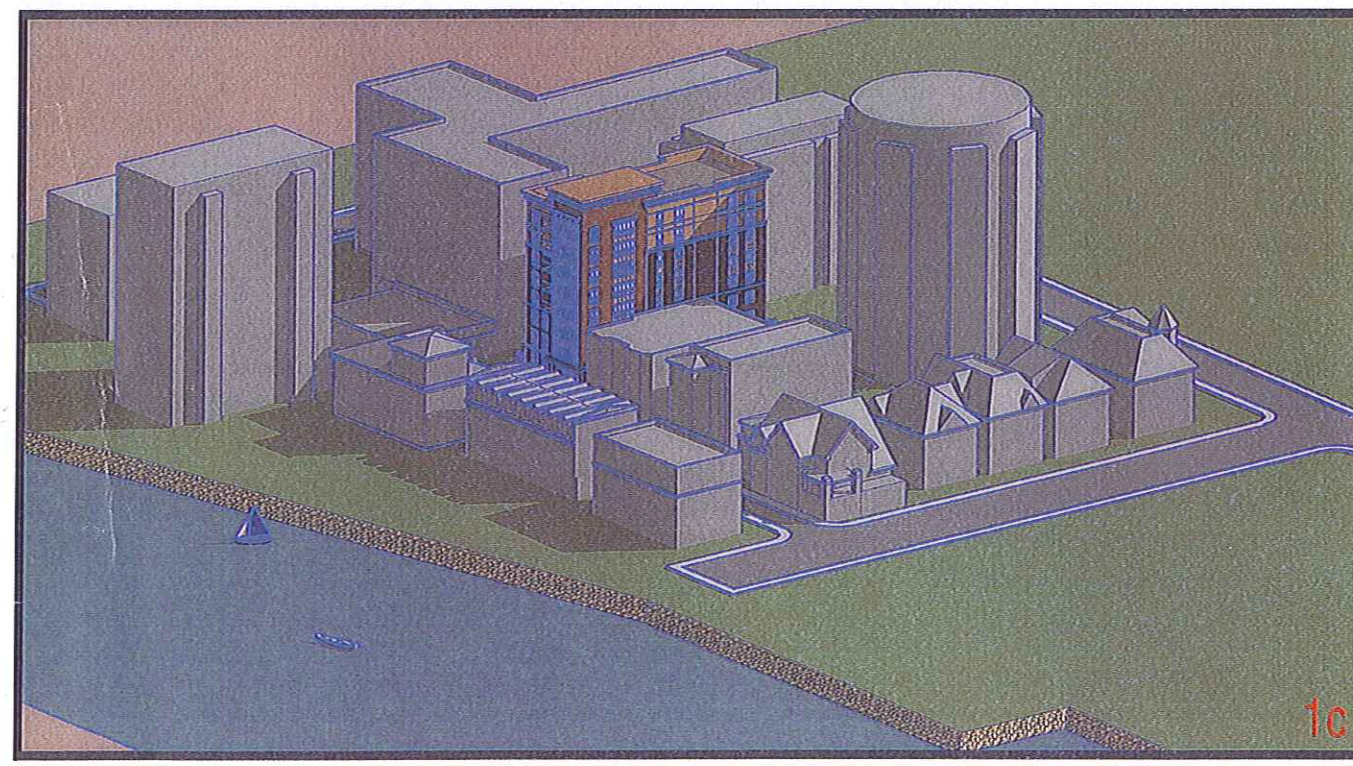
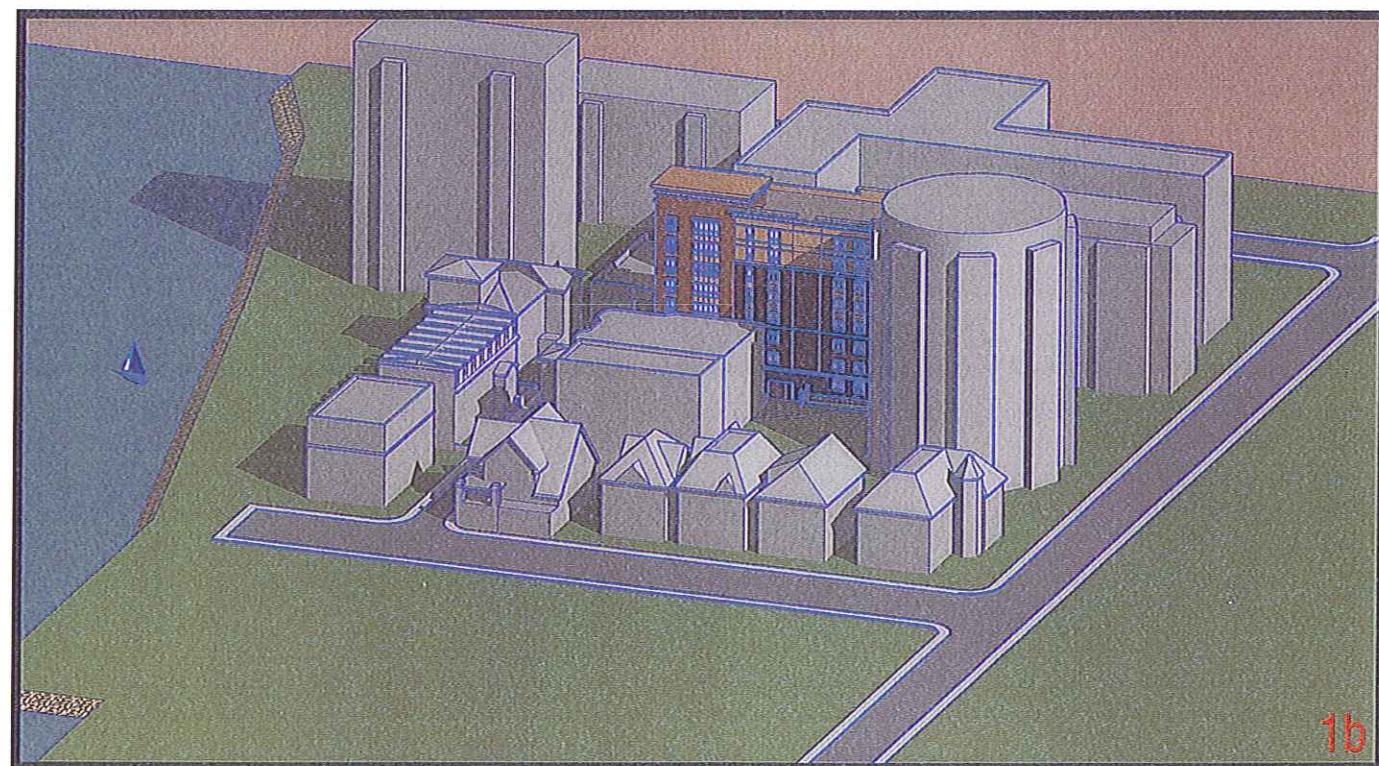
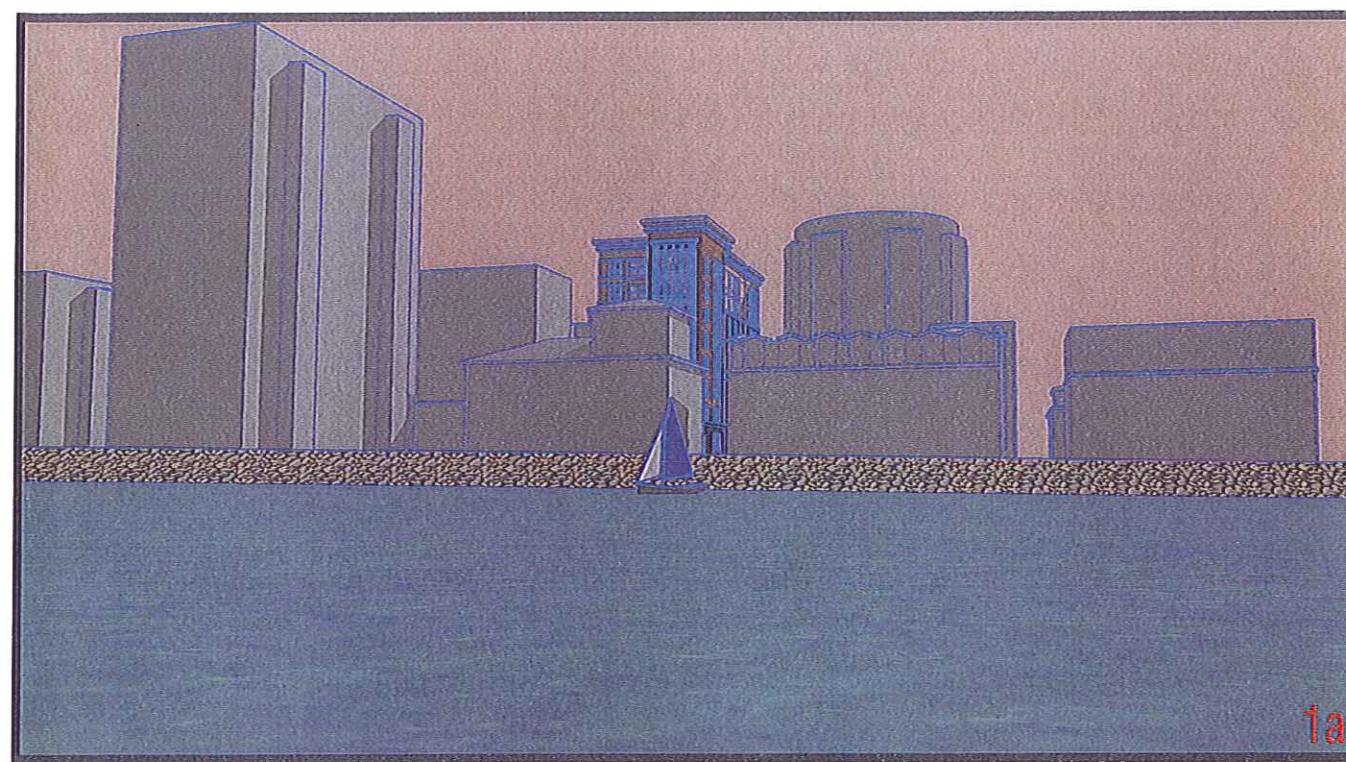
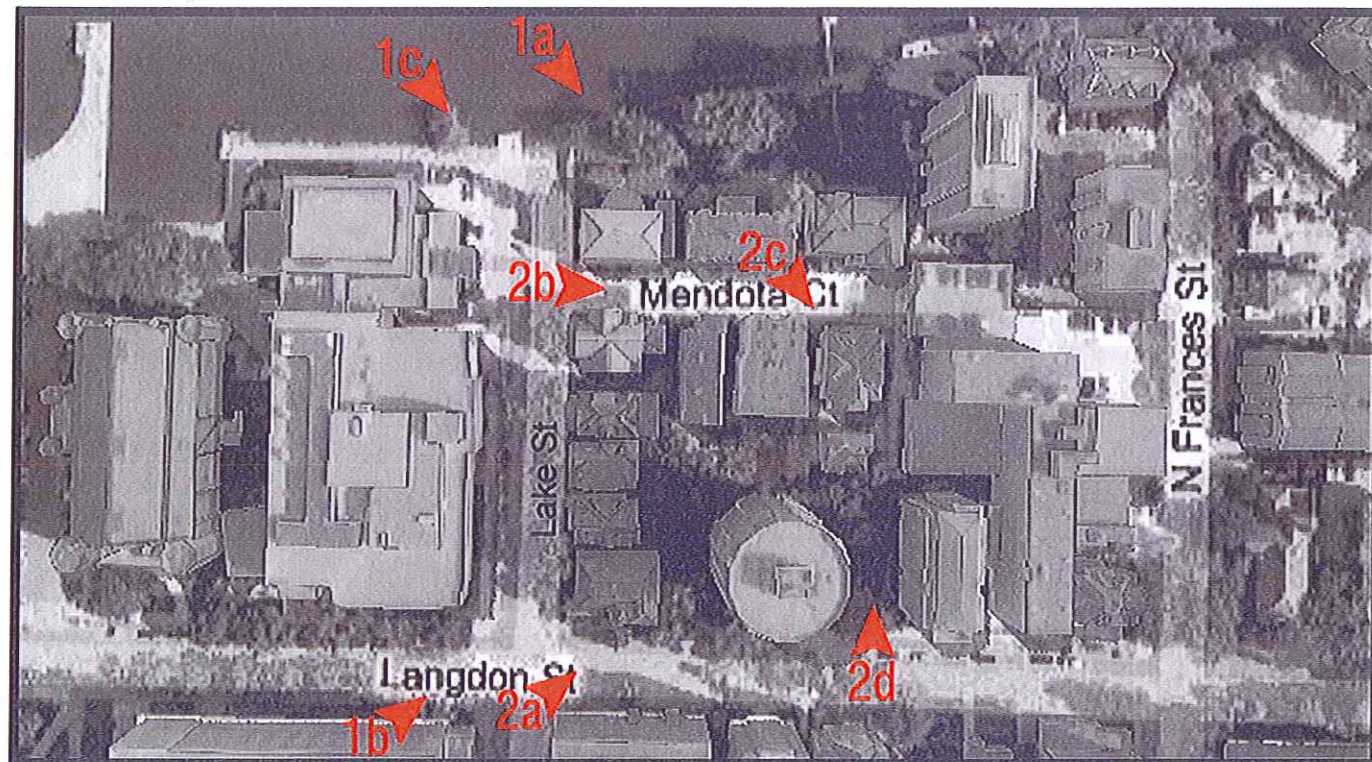
* Based on fixture operating at 15° C. Refer to LED Ambient spec sheet.

LED Performance Generation B Specs*					
Light Bars	Initial Delivered Lumens - Type III Optic	Initial Delivered Lumens - Type III Optic w/ Backlight Shield	System Watts 120-277V	System Watts 347-480V	Dim. "A"/in.
1	1,750 (017)	1,160 (017)	28	30	11.75
2	3,500 (034)	2,320 (034)	55	59	11.75
3	5,250 (051)	3,480 (051)	79	84	13.75
4	7,000 (068)	4,640 (068)	104	109	15.75
5	8,750 (085)	5,800 (085)	128	133	17.75
6	10,500 (102)	6,960 (102)	153	156	19.75
7	12,250 (119)	8,120 (119)	183	194	21.75
8	14,000 (136)	9,280 (136)	207	218	23.75
9	15,750 (153)	10,440 (153)	232	242	25.75
10	17,500 (170)	11,600 (170)	257	266	27.75
11	19,250 (187)	12,760 (187)	281	290	29.75
12	21,000 (204)	13,920 (204)	306	313	31.75

* Based on 6000k color temperature fixture operating at 350mA and 25C Ambient.

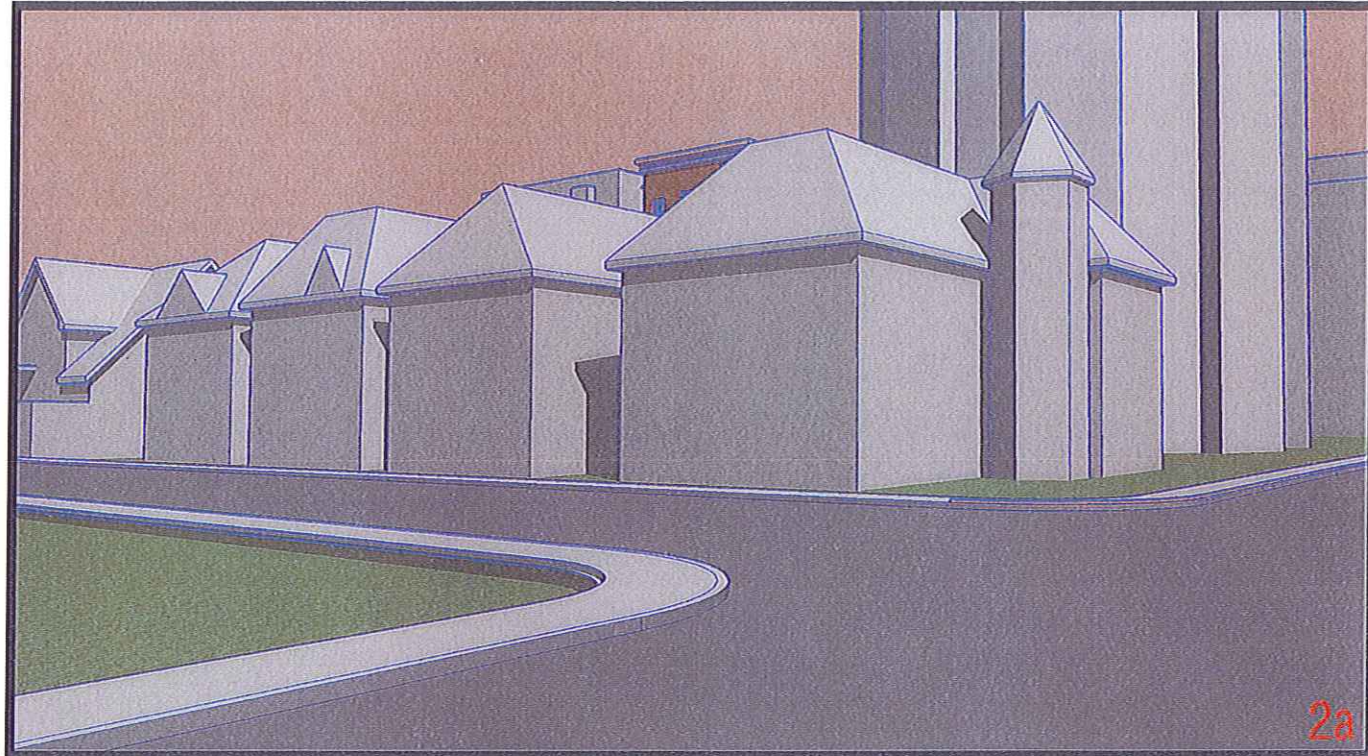




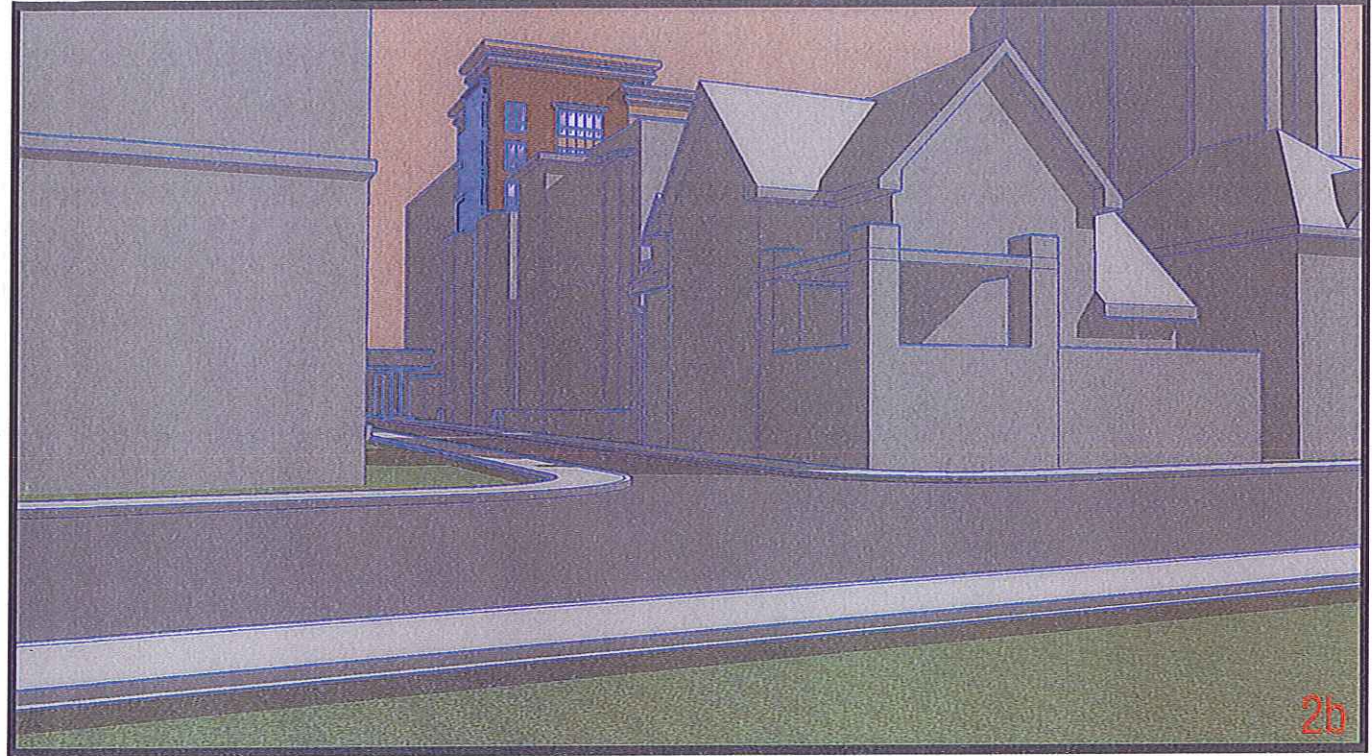


2/20/2

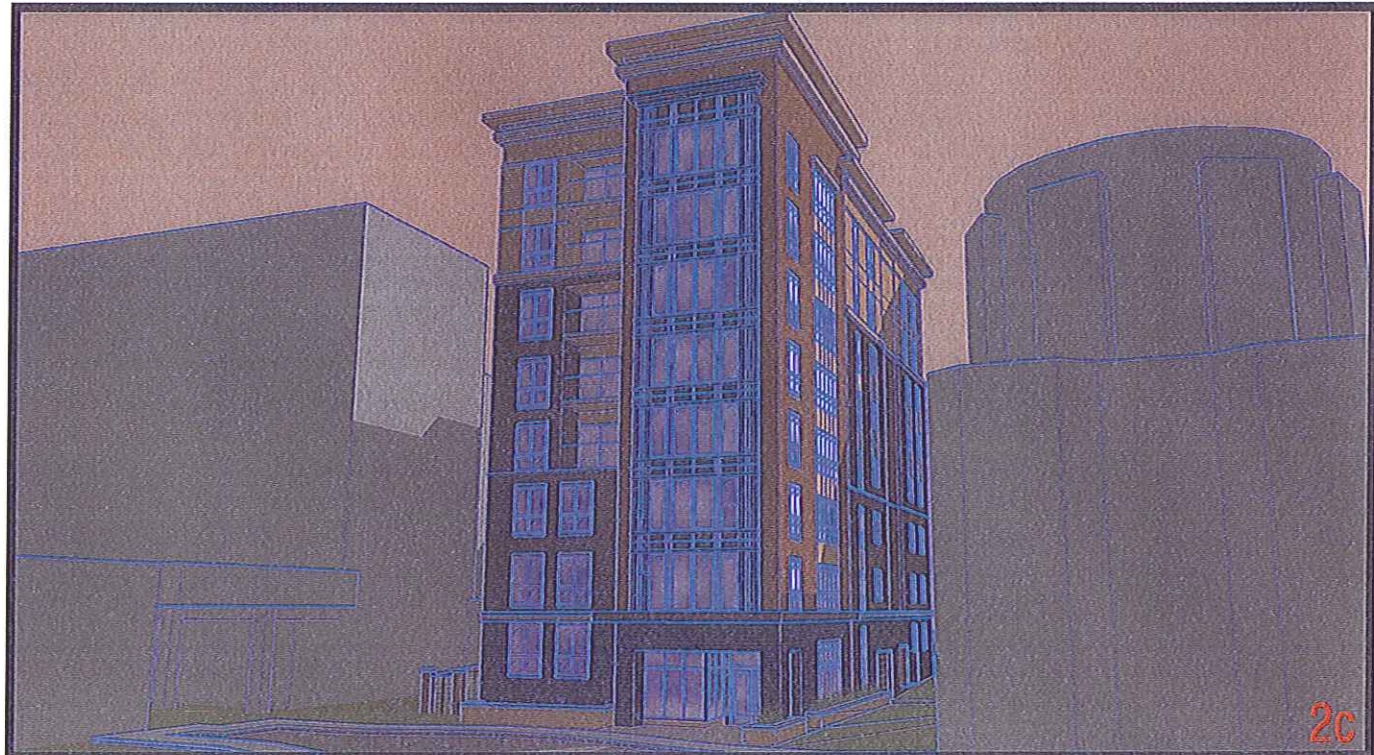
1-6-10



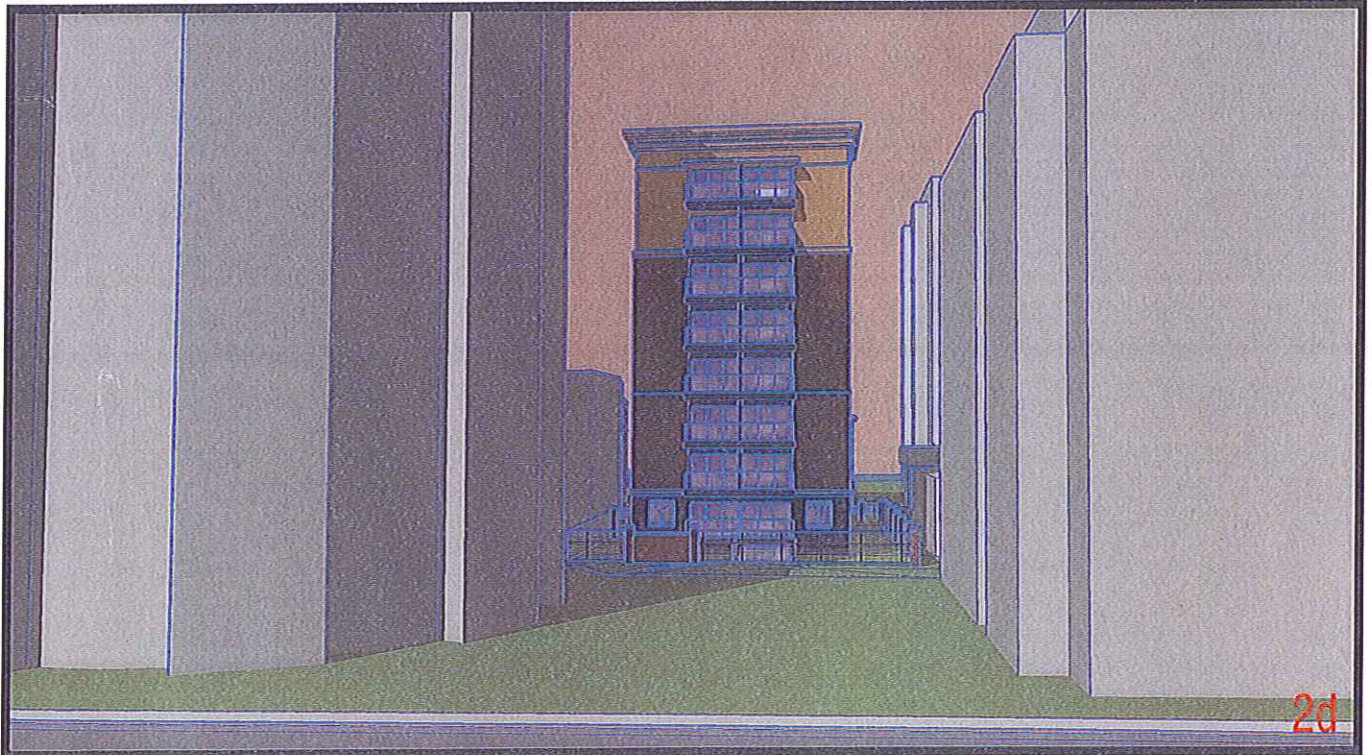
2a



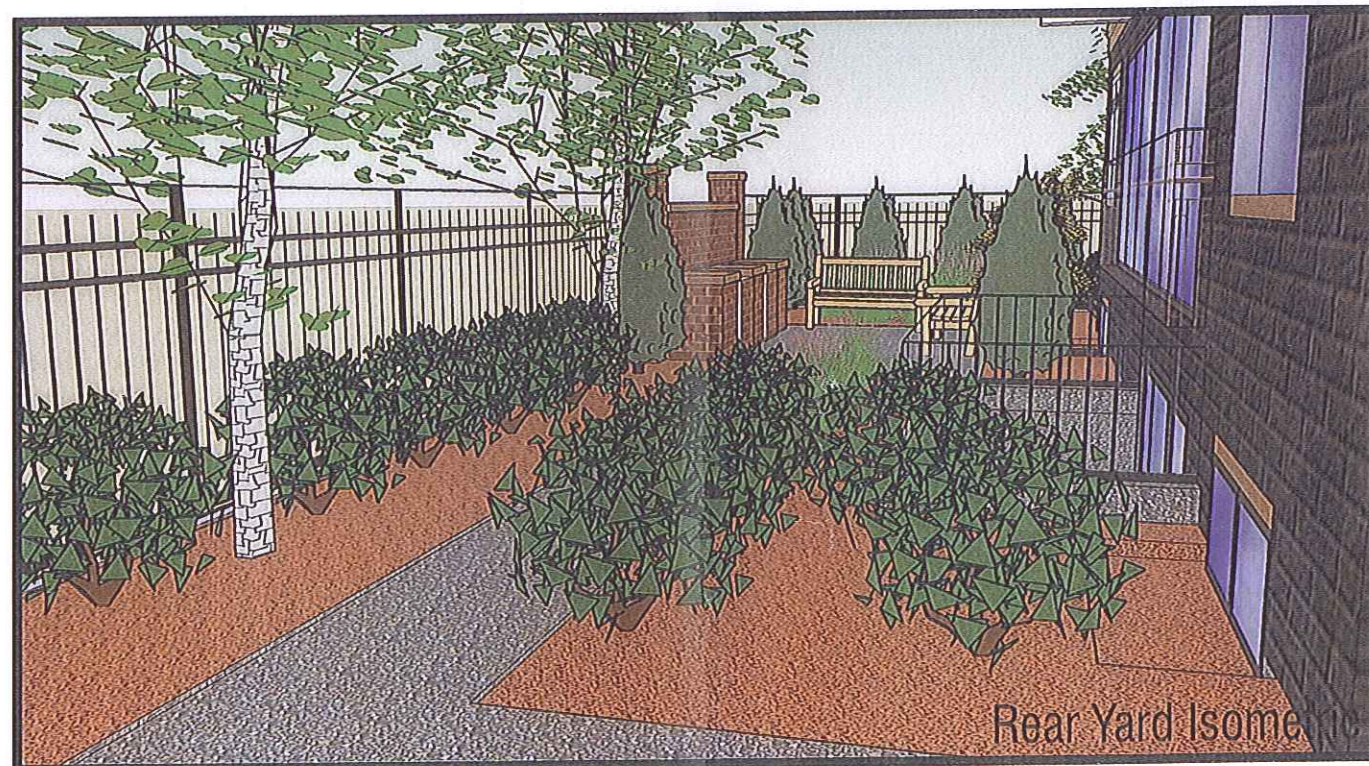
2b



2c



2d



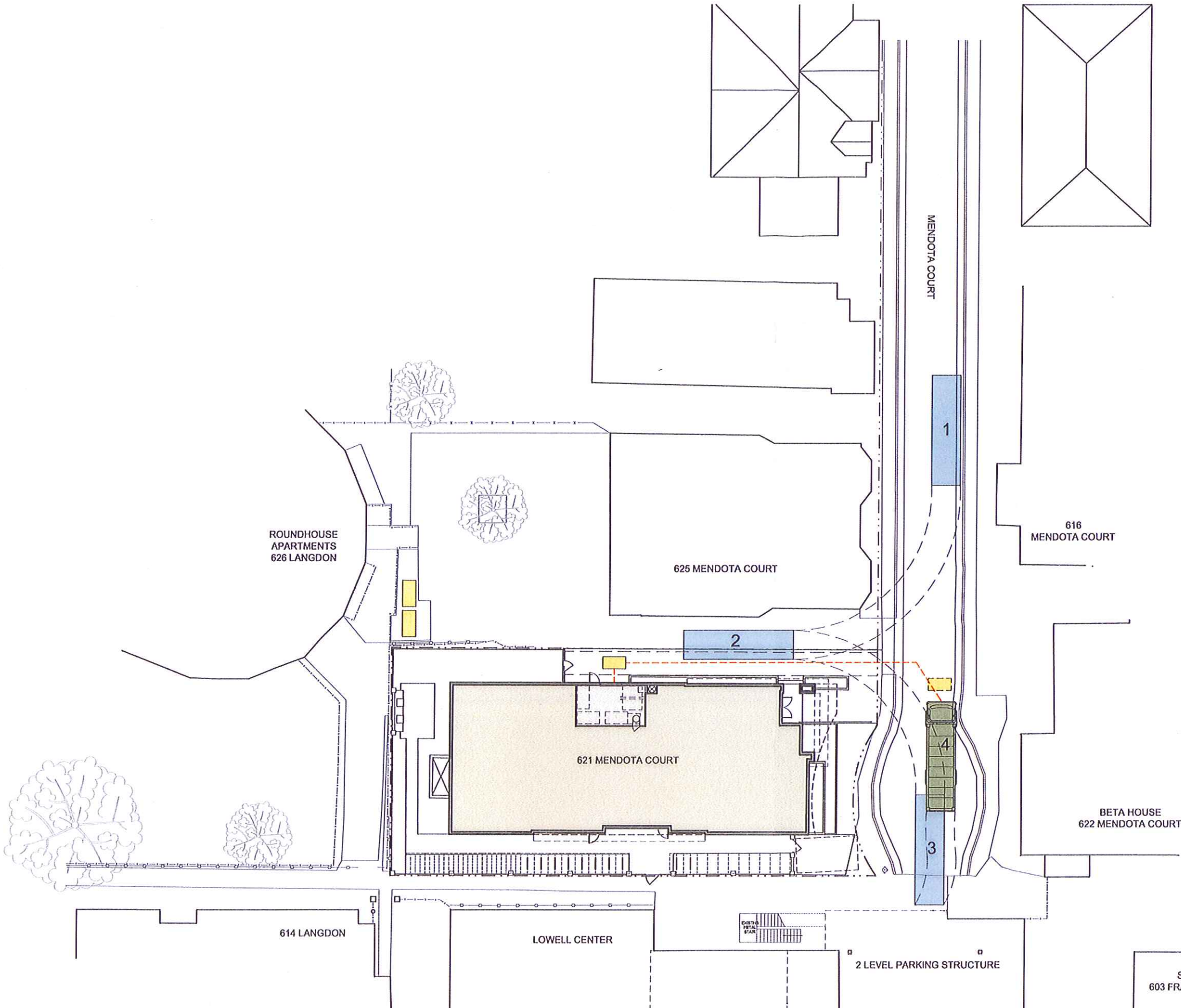


Mendota Court - Exterior Rendering
621 Mendota Court Madison, Wisconsin





GARY BRINK & ASSOCIATES
ARCHITECTS
8401 EXCELSIOR DRIVE
MADISON, WI 53717
608-829-1750
608-829-3056 (FAX)



GRAPHIC	REFUSE COLLECTION KEY
	EXISTING REFUSE CONTAINERS
	NUMBERS RELATE TO SEQUENCE OF COLLECTION VEHICLE

PROJECT: MENDOTA COURT
621 MENDOTA COURT
MADISON, WISCONSIN 53705
DEVELOPER: PATRICK PROPERTIES
547 UNIVERSITY AVENUE
MADISON, WISCONSIN 53705

©2009 GARY BRINK & ASSOC.
Any & all rights, reproduction, or use by any other party is prohibited unless prior written authorization is received from GARY BRINK & ASSOC.
PROJECT: 200849
DRAWN BY:
DATE: 12/28/09
SCALE: AS NOTED
UDC: 10/18/09
PLAN COMMISSION/UDC: 1/13/09
NEIGHBORHOOD: 0/10/09
UDC: 0/10/09
UDC: 0/10/09



WEST REFUSE COLLECTION SCENARIO

1" = 30'

WEST REFUSE
COLLECTION
SCENARIO