

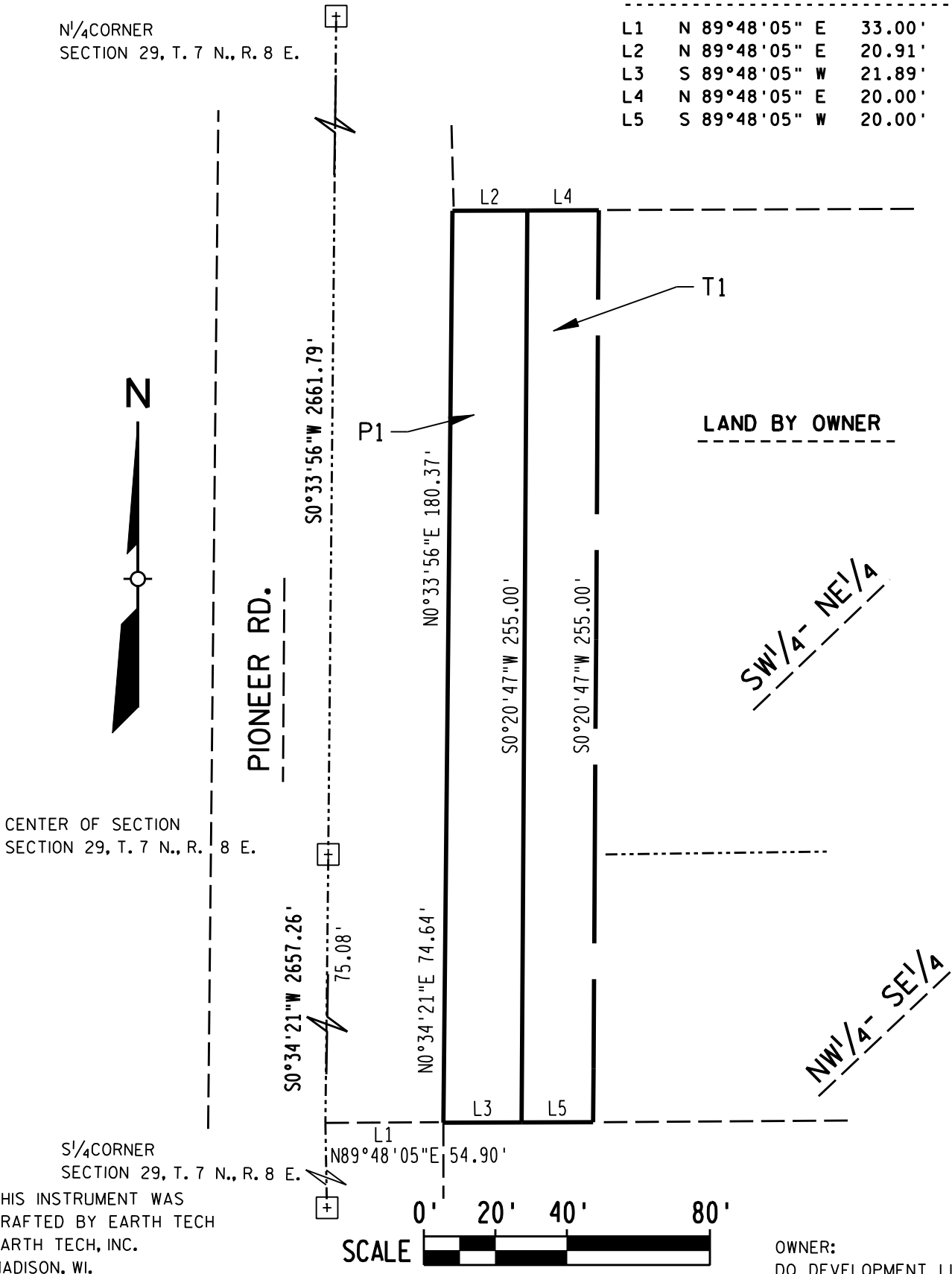
EXHIBIT S3-9

LOCATED IN PART OF THE NW 1/4 OF THE SE 1/4,
AND PART OF THE SW 1/4 OF THE NE 1/4
SECTION 29, TOWNSHIP 7 NORTH, RANGE 8 EAST
TOWN OF MIDDLETON, DANE COUNTY, WISCONSIN

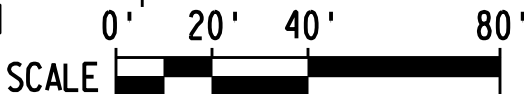
P1=PERMANENT SEWER EASEMENT
T1/T2=TEMPORARY SEWER CONSTRUCTION EASEMENT

LINE TABLE

No.	Direction	Distance
L1	N 89°48'05" E	33.00'
L2	N 89°48'05" E	20.91'
L3	S 89°48'05" W	21.89'
L4	N 89°48'05" E	20.00'
L5	S 89°48'05" W	20.00'



THIS INSTRUMENT WAS
DRAFTED BY EARTH TECH
EARTH TECH, INC.
MADISON, WI.



OWNER:
DO DEVELOPMENT LLC
6502 GRAND TETON PLAZA
MADISON, WI 53719

EARTH TECH PROJECT NO. 84025

SHEET OF