

- INDEX -

SHEET	TITLE
1.	SITE PLAN
2.	GRADING & EROSION CONTROL PLAN
2A.	LANDSCAPING PLAN
3.	ELEVATIONS
4.	FLOOR PLAN
5.	FOUNDATION PLAN & DETAILS
6.	FIRST FLOOR PLAN - WEST WING
7.	FIRST FLOOR PLAN - CENTRAL AREA
8.	FIRST FLOOR PLAN - EAST WING
9.	ROOF FRAMING PLAN
10.	FLOOR FRAMING PLAN
11.	CROSS SECTION & DETAILS
12.	SECTION & DETAILS
13.	DETAILS
14.	SCHEDULES
E-1	ELECTRICAL
E-2	"
E-3	"

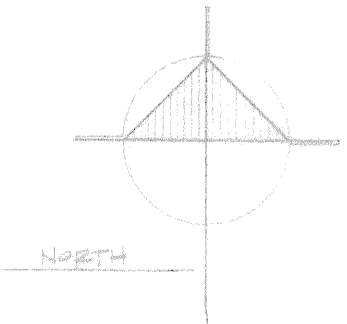
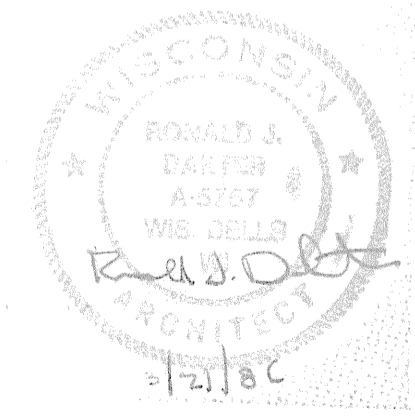
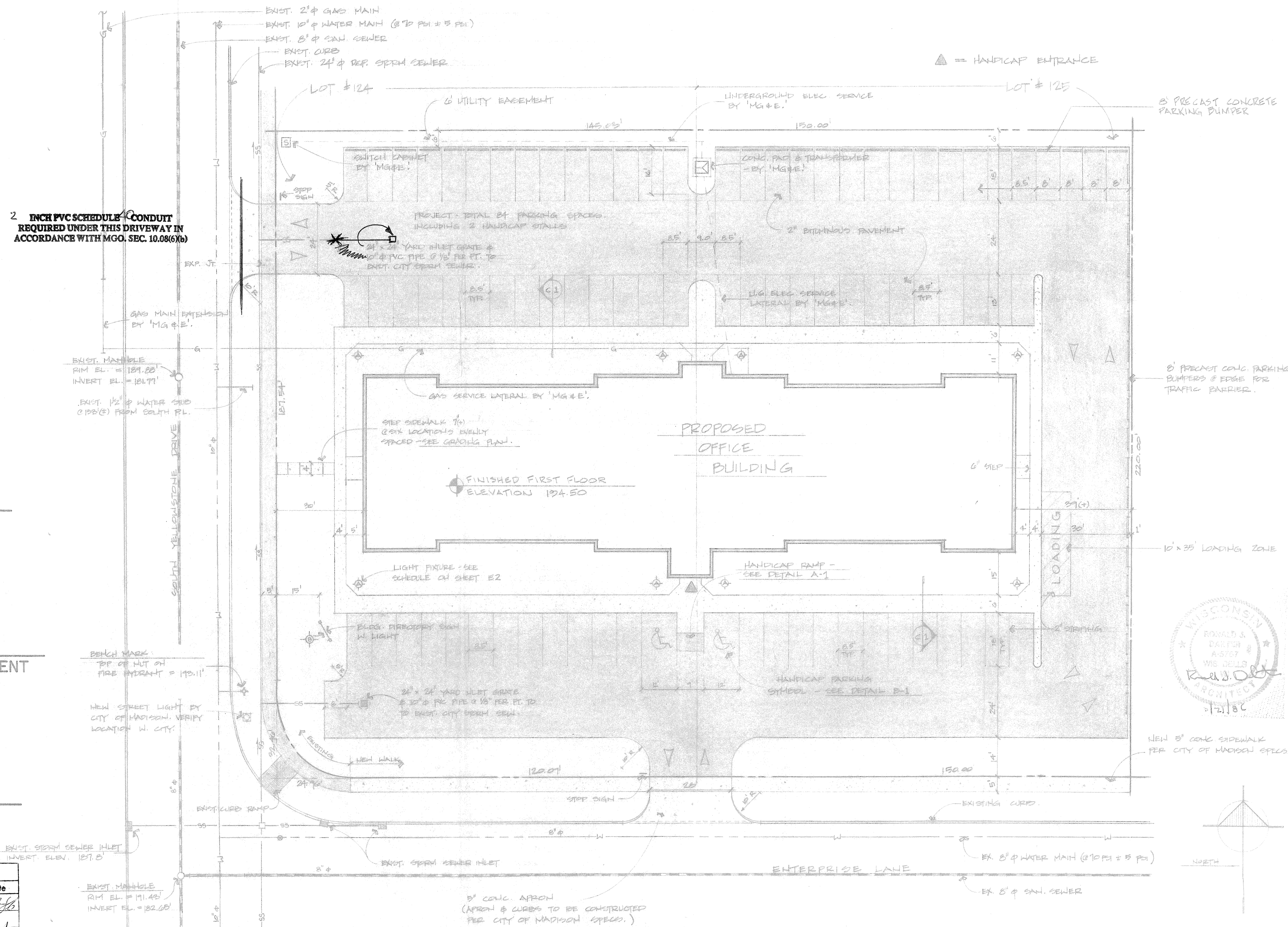
VANTAGE PLACE II

437 SOUTH YELLOWSTONE DRIVE
MADISON, WISCONSIN



SITE LOCATION

LEGAL DESCRIPTION: LOTS #124 & #125 OF THE 10th ADDITION TO PARK TOWNE, CITY OF MADISON, COUNTY OF DADE, & STATE OF WISCONSIN.



CITY OF MADISON APPROVALS

CITY ENGINEER

FIRE MARSHALL

ZONING ADMINISTRATOR

PLANNING DEPARTMENT

TRAFFIC DEPARTMENT

WATER UTILITY

CITY OF MADISON		
PARKING FACILITIES APPROVED	Conditionally	Date
Zoning	<i>[Signature]</i>	3/7/86
Plan	<i>[Signature]</i>	3/7/86
Traffic Eng.	<i>[Signature]</i>	3/7/86
Police	<i>[Signature]</i>	4/2/86
City Eng.	<i>[Signature]</i>	4/2/86

SITE PLAN

SCALE: 1" = 20'

SOUTHWEST ENGINEERING INC.
CONSULTING ENGINEERS
6441 ENTERPRISE LANE - SUITE 107
P.O. BOX 752
MADISON, WISCONSIN 53701

VANTAGE PLACE II
437 SOUTH YELLOWSTONE DRIVE
MADISON, WISCONSIN

OWNER: HORIZON INVESTMENT & DEVELOPMENT CORPORATION

REVISIONS BY

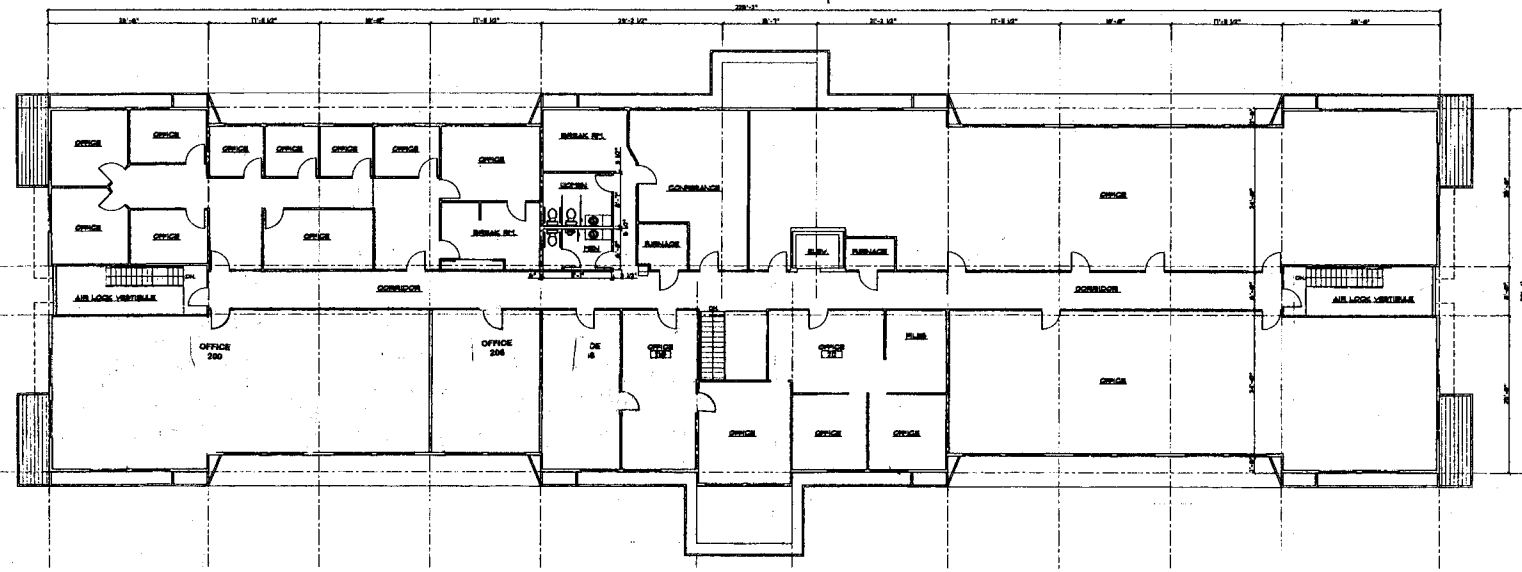
PROFESSIONAL ENGINEER
RONALD S. DAULTON
NO. 45707
WIS. SELLS
3-21-86

PROJECT NO. **85111**

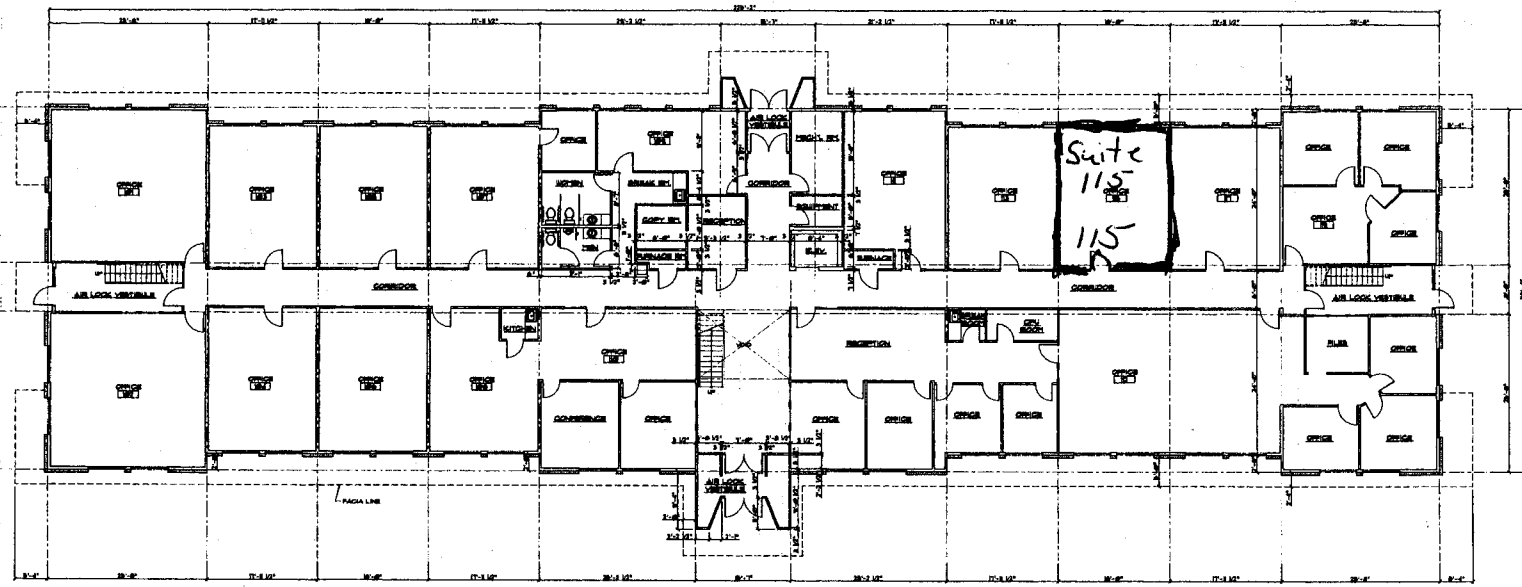
SCALE NOTED DATE MAR 21, 1986

DRAWING NO. **1**

Floor Plan - A



SECOND FLOOR PLAN
SCALE 1/8" = 1'-0"



FIRST FLOOR PLAN
SCALE 1/8" = 1'-0"



DATE	REVISION
NO.	DRAWN
<p>THE SHAW COMPANY, INC.</p>	
<p>VANTAGE PLACE II SITE LOCATION: 147 SOUTH YELLOWSTONE DRIVE MADISON, WISCONSIN</p>	
<p>1/8" SCALE PLANS</p>	

437 S. Yellowstone Drive, Suite #115 (NOT TO SCALE)

Suite #115 Floor Plan B

