



Change of Premises

LIC PCH.2014.01265
(Number)

(scanned)

City of Madison Clerk
210 MLK Jr Blvd, Room 103
Madison, WI 53703

(Leg file number)

(initials)

licensing@cityofmadison.com
608-266-4601

(Processing step)

This application modifies existing alcohol license number: 68176-71293

Class A Beer

Class A Liquor

Class C Wine

Class B Beer

Class B Liquor

Aldermanic District: 6 Alder Name: Marsha Rummel Police Sector: _____

Corporate Information

Licensed Premise Information

Business Legal Name: Curt Vaughn Brink, LLC
701 E. Washington Ave #105

Business dba Name: Brink lounge

Business Address: Madison, WI 53703

Licensed Address: SAME

Corporate Contact Name & Position: _____

Business Contact Name & Position: _____

Matt Brink - G.M.
608-658-7431

SAME

Phone & Email: events@thebrinklounge.com Phone & Email: SAME

Liquor Beer Agent Name: Matt Brink % Alcohol: 80 % Food: 20

Current Capacity (indoor): 396

Current Capacity (outdoor): _____

Proposed Capacity (indoor): _____

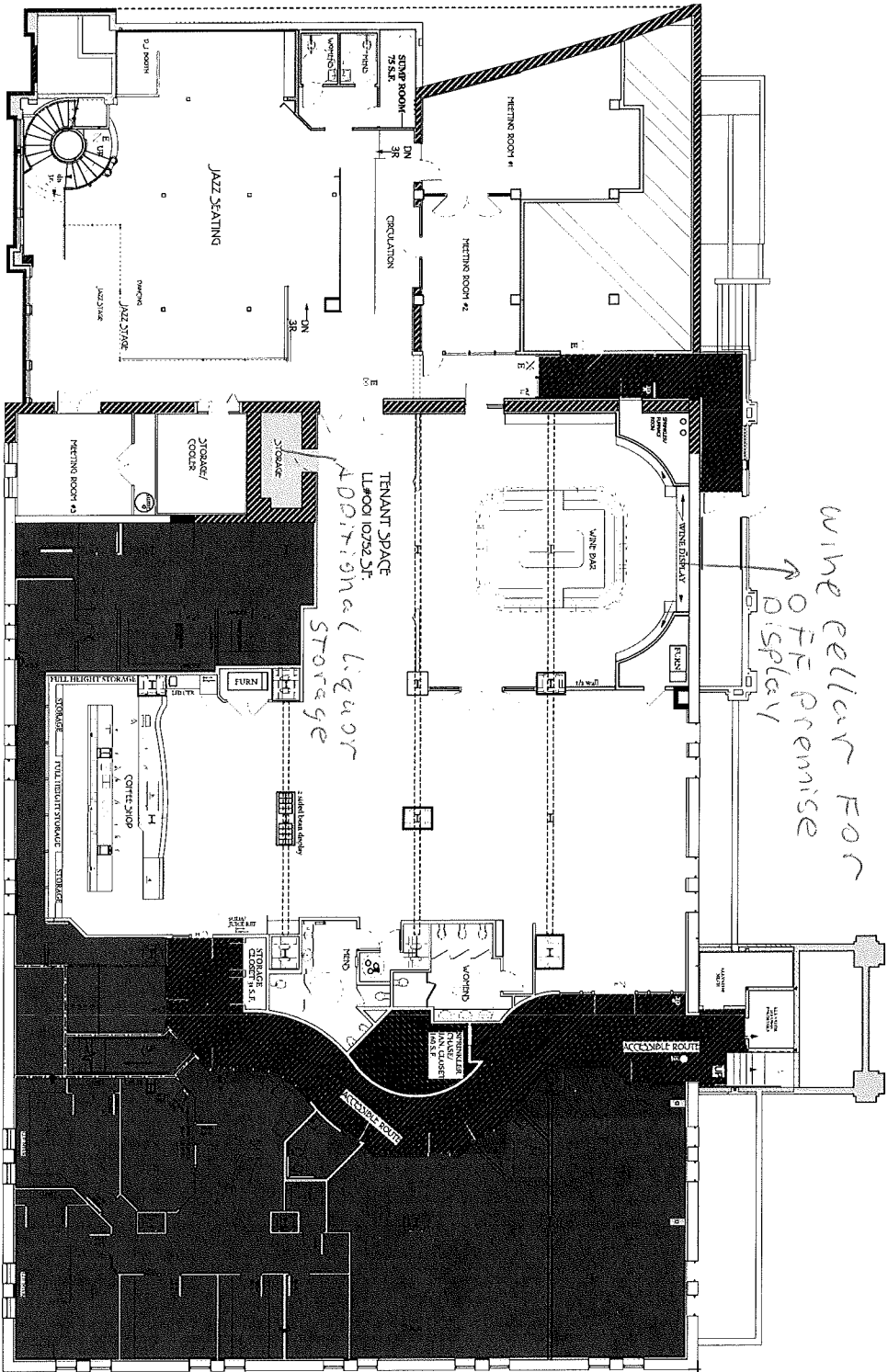
Proposed Capacity (outdoor): _____

Description of Proposed Changes: we want to sell liquor/wine/beer
for OFF premise sale similar to what merchant does.

Detailed Floor Plans included (required)

Orange sign and "License Renewals & Changes" brochure issued

X Matt Brink Date: 12-19-14
Applicant signature



1 LOWER LEVEL PLAN
Scale: 1/4" = 1'-0"

architecture
network, inc.

116 East Duane Street
San Francisco, CA 94102
415-777-7668
www.architecturenetwork.com

PROJECT

THE
DRINK
LOUNGE

782 - 788
300 JIN
MILK
MILK

REVISIONS

NO.	DATE	DESCRIPTION

DATE 31 AUG 2007
SCALE AS NOTED
PROJECT K&K1
DRAWN BY: GBT
DRAWING NAME:
TENANT PLAN
L1#001

DRAWING NUMBER
A-1.0

Liquor/wine/beer available for off premise sale will be stored in our existing, lockable wine cellar.

This cellar has glass doors to make it easy for customers to see what products are available for sale.

Display signs will be placed on the cellar and around the Brink Lounge to notify customers that alcohol is available for off premise sale. Social media will be employed as well.

We currently have 108 wine-by-the bottle options in inventory. All of these options will be available for off premise sale. A list of those options is attached.

10 individual liquor options will initially be offered. These options are as follows:

1. Grey Goose
2. Ketel One
3. Absolute
4. Tanqueray
5. Jameson
6. Captain Morgan
7. Jack Daniels
8. Korbel
9. Bullet Bourbon
10. Bacardi

As awareness and demand change, this list will be amended.

Five options of bottle beer will initially be offered. These selections will be available in 6-packs only. These options are as follows:

1. Miller Lite
2. Bud Light
3. New Glarus Moon Man
4. Dog Fish Head – 60 Minute IPA
5. Stella Artois

Growlers will be offered in ½ gallon capacity for guests to purchase tap beer. The Brink Lounge has six tap lines, and we do not plan to expand this number in the near future.

Off premise sales will be offered until 9pm, and all sales will be placed in brown paper bags.

Brink Lounge staff will card every person that desires to purchase an off premise option.

Customers who are drinking within the Brink Lounge will only be sold off premise options when they are ready to close their tab.

If a customer wishes to purchase an off premise option, and remain in the Brink Lounge past 9pm, the customer will be instructed to take the off premise sale to their vehicle immediately after the sale occurs.

Off premise sales will not be consumed within the Brink Lounge for any reason.

Brink Lounge White Wine Cellar List

Sparkling

<u>Bin #</u>	<u>Vintage</u>	
241	NV	J Cuvee, California, Sonoma, Russian River Valley
243	NV	Veuve Cliquot Yellow Label Brute, France
240	NV	Dom Perignon, France
242	NV	Krug Rose, Brut, France

Assorted Whites

<u>Bin #</u>	<u>Vintage</u>	
223	2005	Kumkani Chardonnay/Viognier, South Africa, Stellenbaosh
200	2008	Quinta da Aveleda, Vinho Verde, Portugal
218	2004	Torbreck Semillion, Australia, Barossa
220	2004	Anselmi Garganega/Trebbiano, Capitel Foscario, Italy, Veneto
222	2008	Sokol Blosser Evolution, Oregon, Willamette Valley
226	2004	Caymus Conundrum, California

Riesling

<u>Bin #</u>	<u>Vintage</u>	
201	2008	Naked, Snoqualmie, Columbia Valley
202	2001	Hugel, France, Alsace
203	2004	Trimbach, France, Alsace

Pinot Gris , Pinot Grigio , Pinot Blanc

<u>Bin #</u>	<u>Vintage</u>	
154	2004	Trimbach, France, Alsace
152	2011	Fantinel, Vigneti Sant Helena, Italy

Sauvignon Blanc

<u>Bin #</u>	<u>Vintage</u>	
166	2005	Honig, California, Napa Valley, Rutherford
178	2011	Mount Nelson, Marlborough, New Zealand
177	2004	Francis Blanchet Pouilly Fume, France, Loire
180	2005	Frogs Leap, California, Napa Valley, Rutherford
182	2002	Delorimier Spectrum, California, Sonoma, Alexander Valley
193	2004	Delorimier Lace, California, Sonoma, Alexander Valley, 375ml
188	2004	Pascal Jolivet Sancerre, France, Loire
190	2004	Francois Cotat Sancerre, France, Loire

Chardonnay

<u>Bin #</u>	<u>Vintage</u>	
144	2006	House Wine, Washington, Columbia Valley
120	2006	Mandarossa, Sicily, Italy
105	2006	Copperidge, California
137	2005	Kali Hart, Monterey County, California
124	2004	Oliver Leflaive Bourgogne Blanc, France, Burgundy
116	2004	Beringer, California, Napa Valley
117	2011	Rodney Strong Estate, Sonoma County, California
108	2002	Delorimier, California, Sonoma, Alexander Valley
132	2008	Pristine, Australia
129	2003	Verget, France, Burgundy, St Veran, Davaye
128	2012	Val de Mer, France
146	2005	Kim Crawford, New Zealand, Marlborough
139	2006	Sonoma Cutrer, California, Russian River
147	2012	Mer Soleil Silver, Monterey County, California
142	2005	Stags Leap, California, Napa Valley
140	2003	Newton Unfiltered, California, Los Carneros

Assorted Reds

<u>Bin #</u>	<u>Vintage</u>	
401	2005	Montes, Chile, Colchagua Valley
405	2007	Frescobaldi Nipozzano, Italy, Tuscany, Chianti
406	2009	Frescobaldi Remole, Italy, Tuscany
408	2003	Zenato Ripassa, Italy, Veneto
409	2001	Museum, Spain, Rioja
410	2003	Clou du Mont Olivet Cuvee du Papet Chateaunef du Pape, France, Rhone

Pinot Noir

<u>Bin #</u>	<u>Vintage</u>	
372	2012	Pedroncelli, Russian River Valley, Sonoma County
369	2011	Salmon Creek, California
370	2010	La Crema, California, Sonoma
371	2003	Frederic Magnien, France, Burgundy, Marsanny
395	2003	Sinskey, Napa Valley, Los Carneros
394	2008	J, California, Sonoma, Russian River
368	2004	Cuvaison, California, Napa Valley, Los Carneros
393	2002	Daniel Bocquenet, France, Burgundy, Nuits St. Georges
386	2003	Dureuil-Jaththial, France, Burgundy, Nuits St. Georges
392	2004	Rochioli, California, Sonoma, Russian River Valley
388	2003	Robert Groffier, France, Burgundy, Chambolle Musigny

Merlot

<u>Bin #</u>	<u>Vintage</u>	
333	2006	Hogue Genesis, Washington, Columbia Valley
332	2008	Chateau St Jean, California
344	2009	Santa Emma Reserve
358	2009	Whitehall Lane, California, Napa Valley
336	2002	Northstar, Washington, Columbia Valley
345	2010	Seven Falls, Washington State, Wahluke Slope
346	2003	Kenwood Jack London, California, Sonoma
356	2003	Markham, California, Napa Valley
347	2010	Milbrandt, Washington State, Wahluke Slope
348	2001	Havens, California, Napa Valley
357	2002	Rutherford Hill, California, Napa Valley, Rutherford
359	2001	Etude, California, Napa Valley
360	2003	Duckhorn Estate, California, Napa Valley

Carmenere , Malbec , Zinfandel

<u>Bin #</u>	<u>Vintage</u>	
309	2010	Casillero Del Diablo
308	2010	Casa Laposta, Carmenere, Rapel Valley
335	2012	Finca el Origen Reserve, Mendoza, Argentina
320	2011	Punto Nino, Chile, Colchagua Valley
322	2009	Santa Carolina Reserve
323	2010	Carmen Gran Reserva, Chile, Colchagua Valley
311	2011	Trentadue, Sinfandel, Alexander Valley Estate, Sonoma County
310	2009	Verum, Reserva, Argentina

Meritage , Red Blends

<u>Bin #</u>	<u>Vintage</u>	
297	2010	Hahn Estates, California, Central Coast
298	2012	La Storia, Alexander Valley, Sonoma County, Cuvee
299	2009	Newton Red Label Claret, California, Napa Valley
300	2004	Glen Carlou Grand Classique, South Africa, Paarl
296	2010	The Jack, Red Blend, Columbia Valley, Washington
302	2002	Chimney Rock Elevage, California, Napa Valley
303	2002	Quintessa, California, Napa Valley, Rutherford

Brink Lounge

Red Wine Cellar List

Syrah , Shiraz , Petite Sirah

<u>Bin #</u>	<u>Vintage</u>	
287	2010	Robert Hall, Paso Robles, California
285	2010	Guilty, Shinas Estate, Victoria, Australia
288	2001	Rockland Petite Sirah, California, Napa Valley
289	2003	Taltarni Shiraz, Australia, Heathcote
290	2003	Two Hands Ares, Shiraz, Australia, Barossa Valley
291	1999	Penfolds Grange, Shiraz, Australia, Barossa Valley

Cabernet

<u>Bin #</u>	<u>Vintage</u>	
260	2011	Santa Carolina, Chile, Colchagua Estate
261	2007	Hess, California, Napa Valley
284	2010	Forefront, California, Pine Ridge, Napa Valley
275	2010	Seven Falls, Washington State, Wahluke Slope
250	2010	Mohawk Select, Southern Australia
276	2010	Milbrandt, Washington State, Wahluke Slope
249	2011	Altocedro, Mendoza Argentina
254	2008	Freemark Abbey, California, Napa Valley
262	2009	Whitehall Lane, California, Napa Valley
251	2002	Honig, California, Napa Valley, Rutherford
265	2011	La Storia, Alexander Valley, Sonoma County
253	2010	Ladera, Napa Valley, Estate Grown
264	2000	Mayacamus, California, Napa Valley
263	1999	Jordan, California, Sonoma, Alexander Valley
272	2002	Chateau St Jean Cinq Cepages, California, Sonoma
273	2001	Heitz Bella Oaks, California, Napa Valley, Rutherford
274	2001	Silver Oak, California, Napa Valley, Oakville
278	1999	Mount Veeder, California, Napa Valley