

the Longfellow

Alexander  
Company

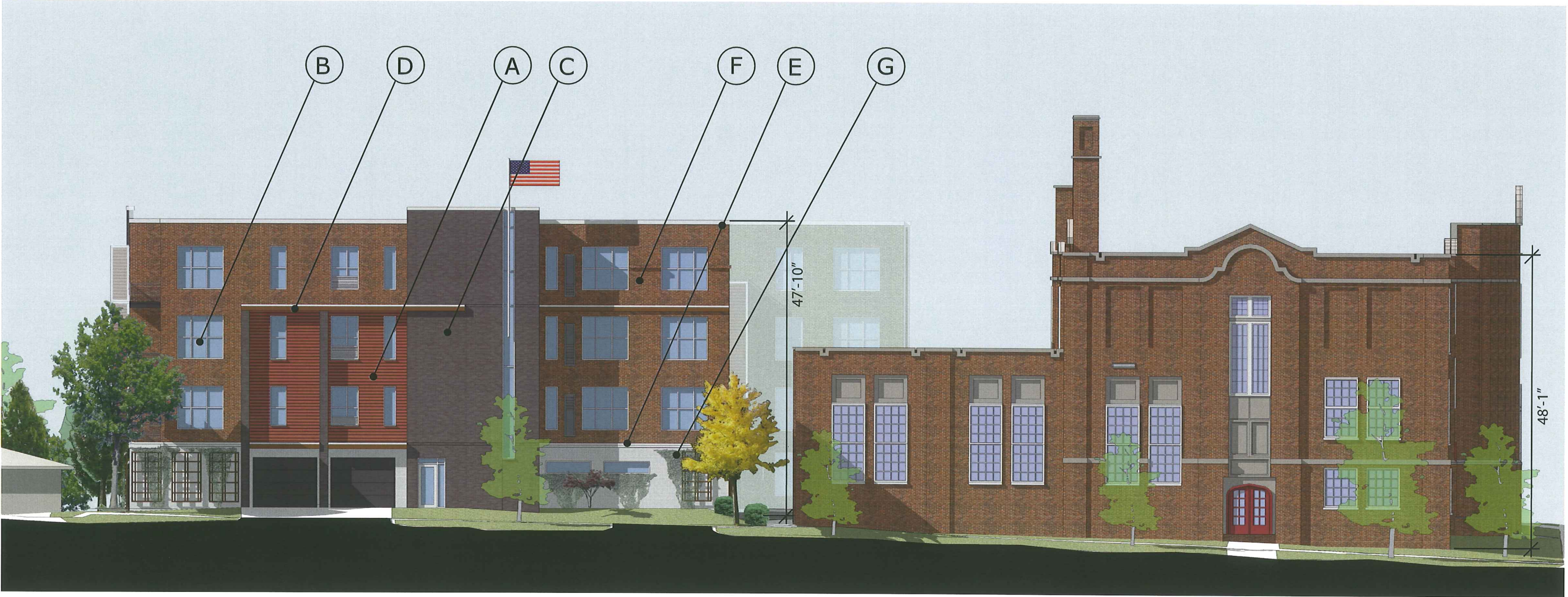


NORTH ELEVATION

- A = Horizontal architectural metal panel - Terra Cota
- B = White aluminum window and door frames
- C = Brick - Ultra Brown
- D = Cedar fascia and soffit - Dark Brown
- E = White coping drip edge
- F = Brick - Autumn Haze
- G = Colored Masonry Block - Camel (light tan)

the Longfellow

Alexander  
Company

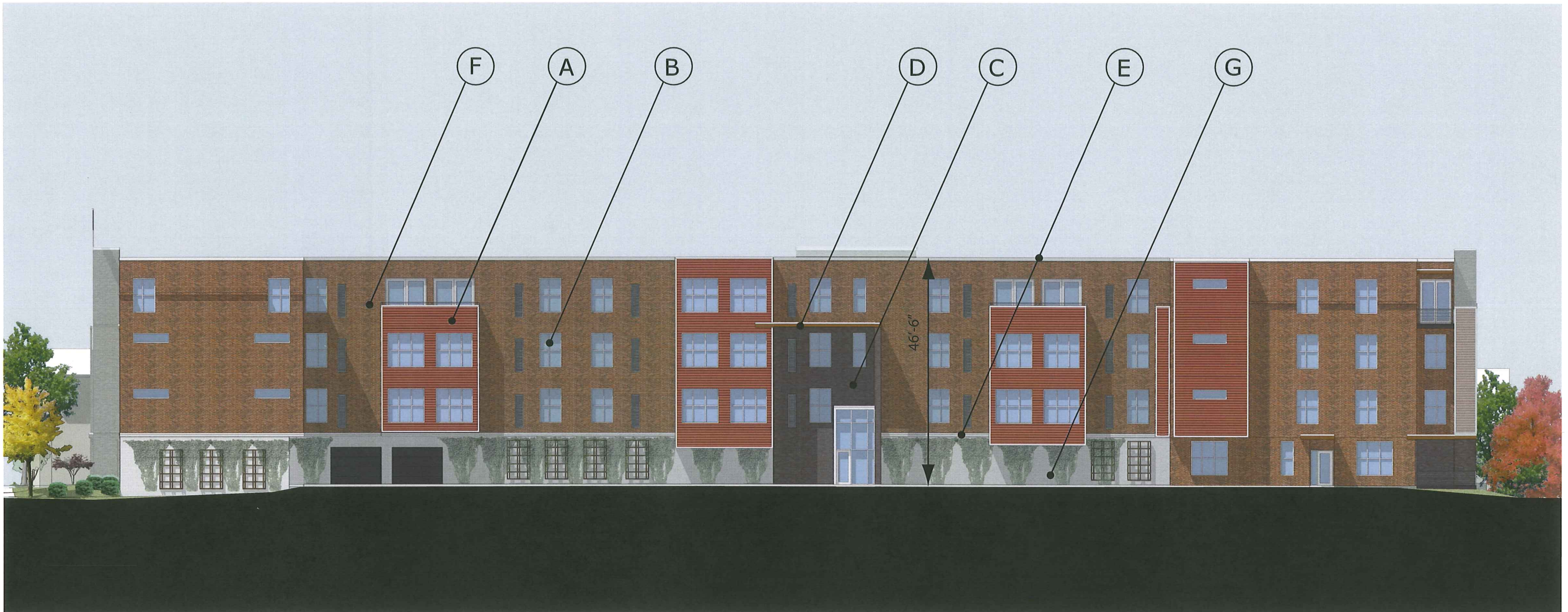


SOUTH ELEVATION

- A = Horizontal architectural metal panel - Terra Cota
- B = White aluminum window and door frames
- C = Brick - Ultra Brown
- D = Cedar fascia and soffit - Dark Brown
- E = White coping drip edge
- F = Brick - Autumn Haze
- G = Colored Masonry Block - Camel (light tan)

the Longfellow

Alexander  
Company

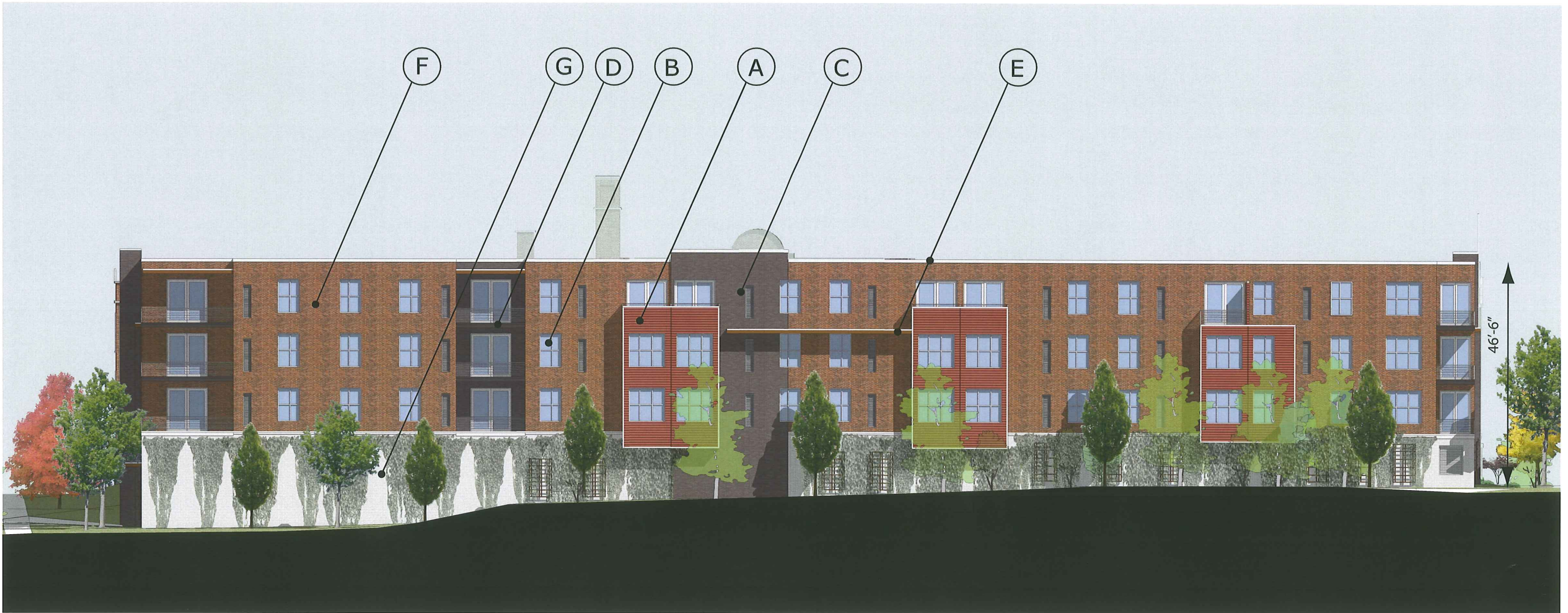


EAST ELEVATION

- A = Horizontal architectural metal panel - Terra Cota
- B = White aluminum window and door frames
- C = Brick - Ultra Brown
- D = Cedar fascia and soffit - Dark Brown
- E = White coping drip edge
- F = Brick - Autumn Haze
- G = Colored Masonry Block - Camel (light tan)

the Longfellow

Alexander  
Company



WEST ELEVATION

- A = Horizontal architectural metal panel - Terra Cota
- B = White aluminum window and door frames
- C = Brick - Ultra Brown
- D = Cedar fascia and soffit - Dark Brown
- E = White coping drip edge
- F = Brick - Autumn Haze
- G = Colored Masonry Block - Camel (light tan)

*the Longfellow*

**Alexander**  
*Company*



WEST ELEVATION

*the Longfellow*

**Alexander**  
*Company*



SOUTH WEST PEDESTRIAN VIEW

*the Longfellow*

**Alexander  
Company**



SOUTH EAST CORNER FROM  
ACROSS THE STREET -  
PEDESTRIAN VIEW

*the Longfellow*

**Alexander**  
Company



SOUTH EAST CORNER - PEDESTRIAN VIEW



*the Longfellow*

**Alexander**  
*Company*



NORTH EAST CORNER  
FROM ACROSS STREET  
- PEDSTRIAN VIEW

*the Longfellow*

**Alexander**  
*Company*



NORTH EAST CORNER  
- PEDESTRIAN VIEW

*the Longfellow*

**Alexander  
Company**

 **ICONICA**



**NORTH WEST - PEDESTRIAN VIEW**



*the* Longfellow  
Partial Courtyard Section  
- looking north

