

CERTIFIED SURVEY MAP

PART OF THE SOUTHEAST 1/4 OF THE SOUTHEAST 1/4 OF SECTION 22,
TOWNSHIP 7 NORTH, RANGE 8 EAST, CITY OF MADISON, DANE COUNTY, WISCONSIN

0 100 200 300



SCALE : ONE INCH = ONE HUNDRED FEET

CURVE TABLE

NUMBER	ARC LENGTH	CENTRAL ANGLE	RADIUS	CHORD DIRECTION	CHORD LENGTH
C1	11.99	91°33'36"	7.50	N 45°01'48" W	10.75
C2	250.71	03°34'08"	4025.00	S 89°50'27" W	250.67
C3	175.66	02°30'02"	4025.00	N 89°37'30" W	175.65
C4	75.05	01°04'06"	4025.00	S 88°35'26" W	75.05

JUNCTION RIDGE PLAT

WEST LINE SW 1/4,
SE 1/4, SE 1/4
SECTION 22-7-8

LANDS

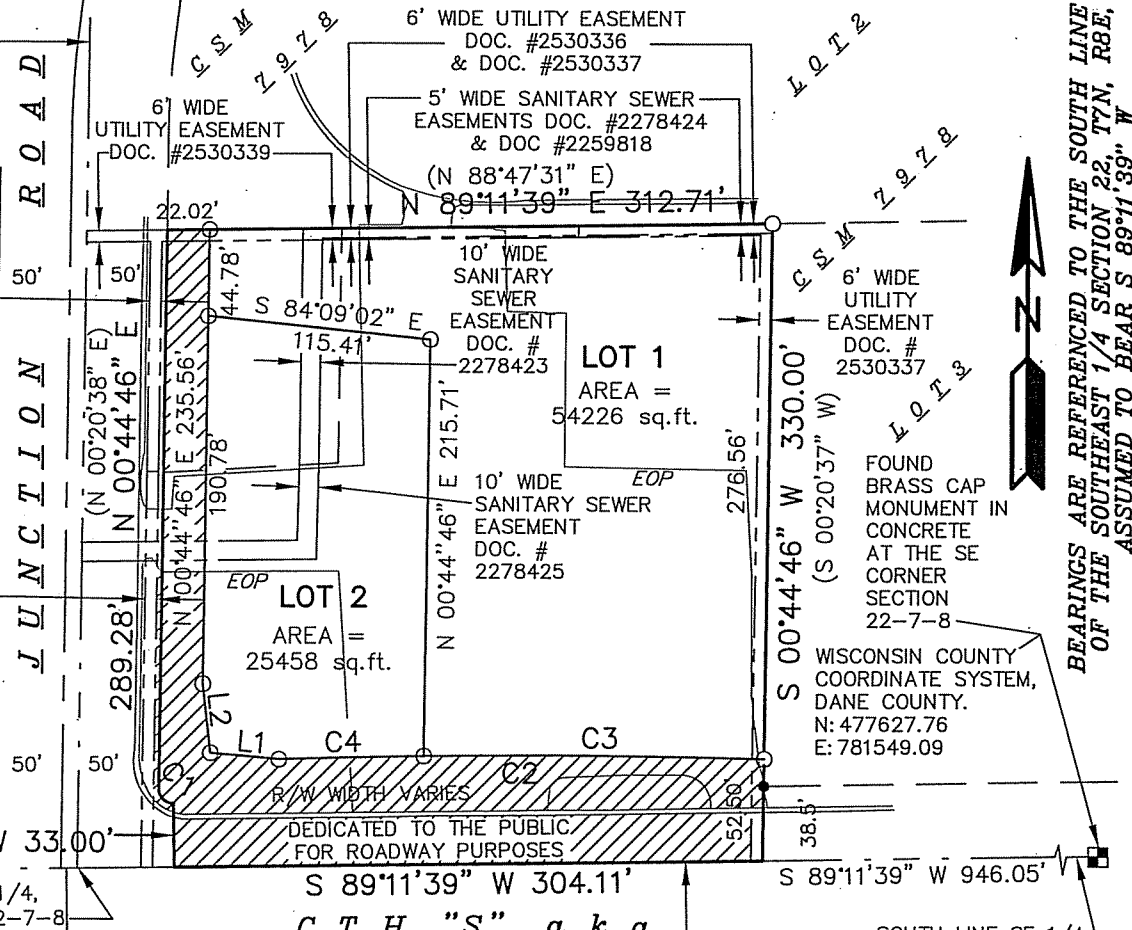
6' WIDE
UTILITY EASEMENT
DOC. #2530339

6' WIDE
UTILITY EASEMENT
DOC. #2530338

6' WIDE
UTILITY EASEMENT
DOC. #2530338

FOUND ALUMINUM
MONUMENT IN
CONCRETE AT THE
S 1/4 CORNER
SECTION 22-7-8

SW CORNER, SE 1/4,
SE 1/4, SECTION 22-7-8



LANDS

CTH "M"

40' 40'

MINERAL POINT ROAD

MENARD COMMERCIAL PARK

LINE TABLE

NUMBER	DIRECTION	DISTANCE
L1	N 84°55'57" W	35.61'
L2	N 06°24'49" W	35.61'

LEGEND AND NOTES

- 3/4" SOLID IRON ROD FOUND
 - 3/4" X 24" SOLID IRON RE-ROD SET, WT. 1.50 lbs./ft.
- SEE SHEET 2 FOR ADDITIONAL NOTES.

PREPARED FOR :
WCB PROPERTIES LLC
6180 Verona Road
Fitchburg, WI 53719

PREPARED BY :
MAYO corporation

MAP NO. _____

DOCUMENT NO. _____