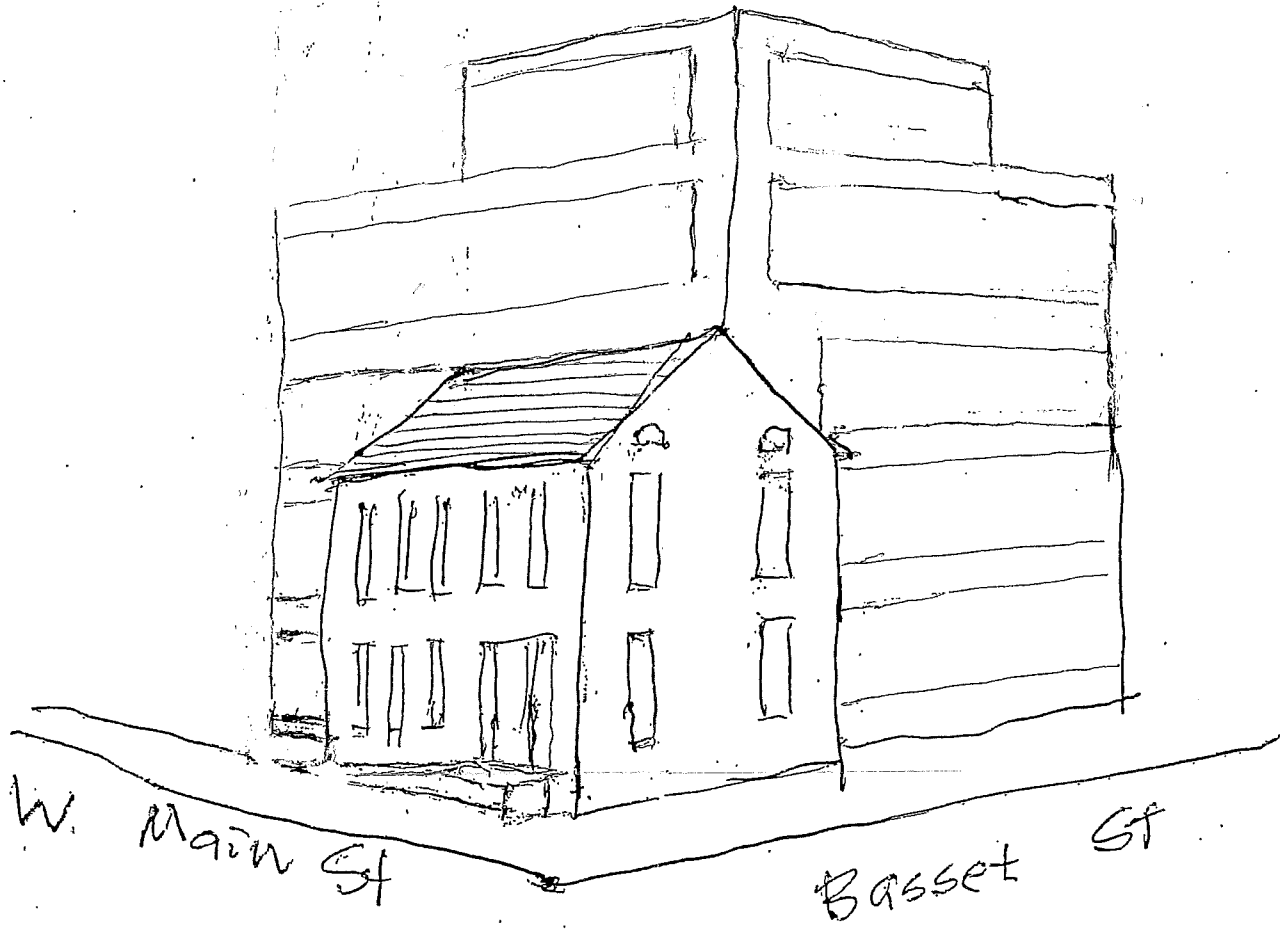
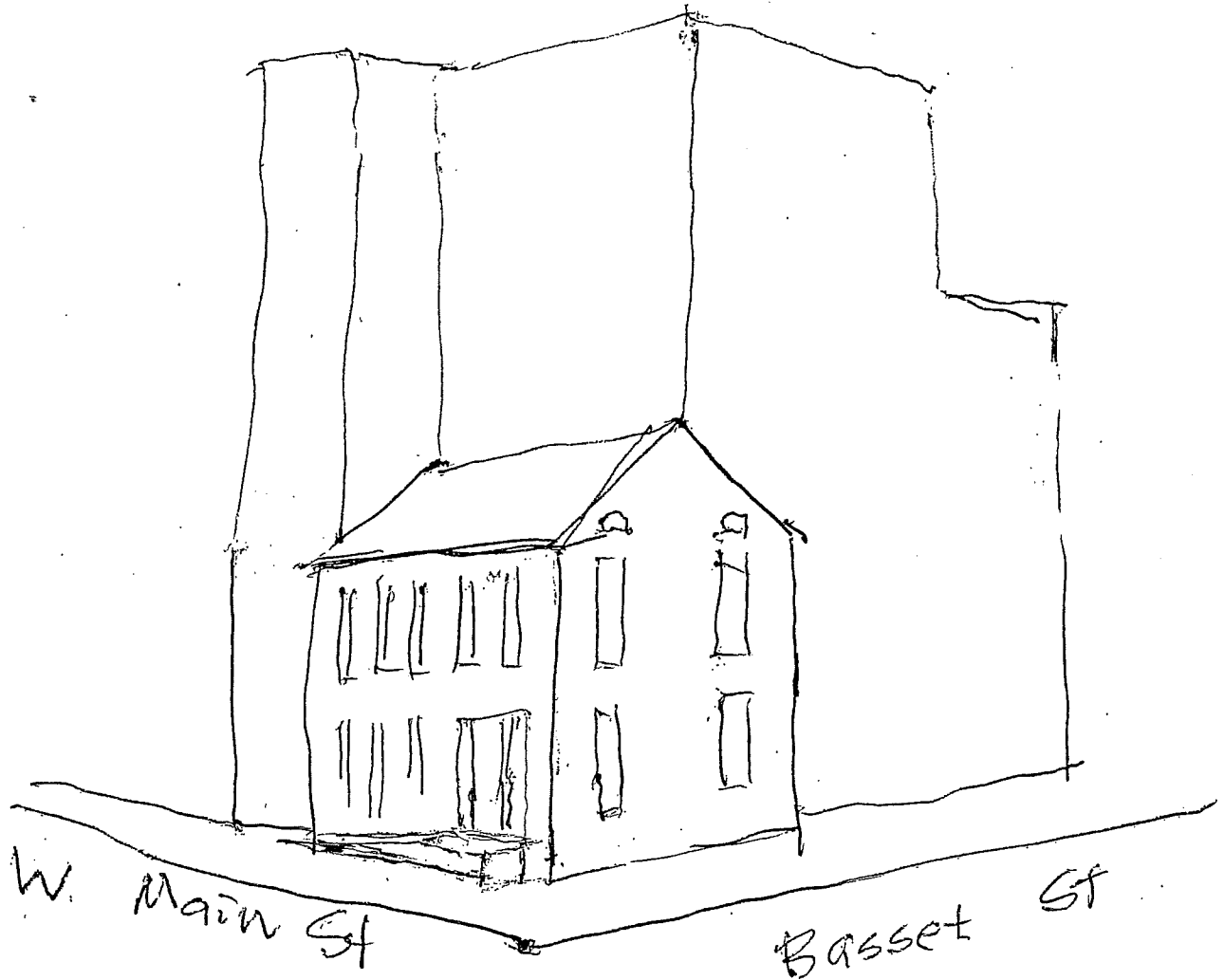


preserving corner walls
of historic 502 W. Main St (1867)



502 W. Main St.
Alternate design (A)

preserving corner walls
of historic 502 W. Main St (1867)



502 W. Main St.

ALternate design (B)

Why not an alternate design

that preserves shell of original
1867 building? The 1867 shell could
serve as a unique 2 story entrance lobby
to a re-configured apartment design

- no underground parking was planned
for 502 W. Main or Tuscan Place (no onsite parking either)
- 502 already sits at the corner
of W. Main & Basset St.
(this leaves the entire rest of
the site available for development.)
- save the 2 corner walls
(along W. Main St. & Basset St.)
- no significant structural
damage has been cited re 502
W. Main St.

