

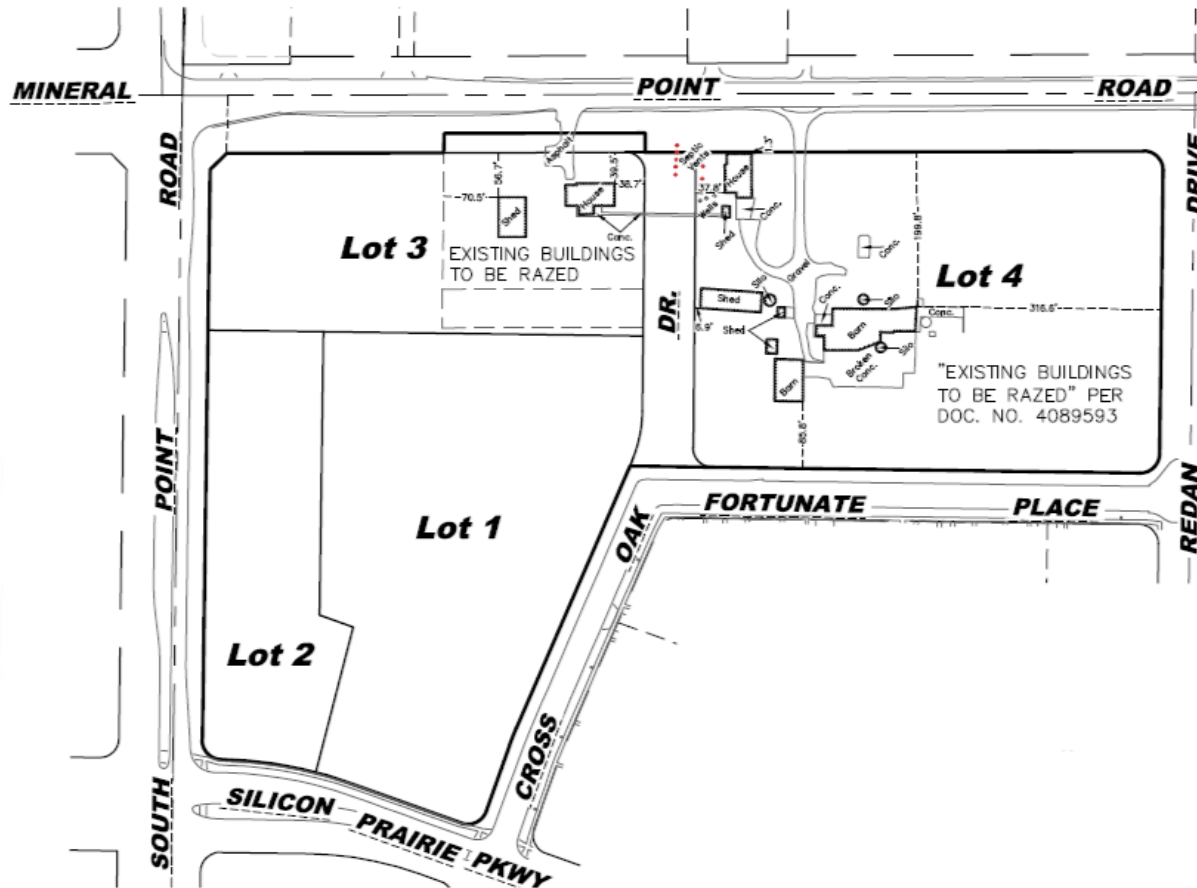
TWO POINT CROSSING CSM
(9301-9317 Mineral Point Road and 9450 Silicon Prairie Parkway)

Contract 8517
Improvements to serve Lots 1-3
Lot 4 Improvements with Future Phase

Project Location Map



TWO POINT CROSSING CSM
 (9301-9317 Mineral Point Road and 9450 Silicon Prairie Parkway)
 Contract 8517



Improvements to Lots 1-3

*Public Sidewalk Installation

- South Point Rd (adj. to Lots 2 and 3)
- Silicon Prairie Pkwy (adj. to Lots 1 and 2)
- Cross Oak Dr (adj. to Lot 1)

*Utility connections

*Ingress/egress to development including tapers and installation of island at Mineral Pt. Rd/Cross Oak Dr. to allow for Right-in/Right-out/Left-in access (Left-outs will be prohibited)

*Multi-use path (10' in width) along Mineral Point Rd (adj. to Lot 3)

*Complete street construction of new Cross Oak Dr. between Mineral Pt. Rd and Fortunate Place

-66' Right of Way dedication

Street = 36' face to face

Public sidewalks = 5' each side of street

Terrace = 9' each side of street

1' behind walk to property line each side of street