

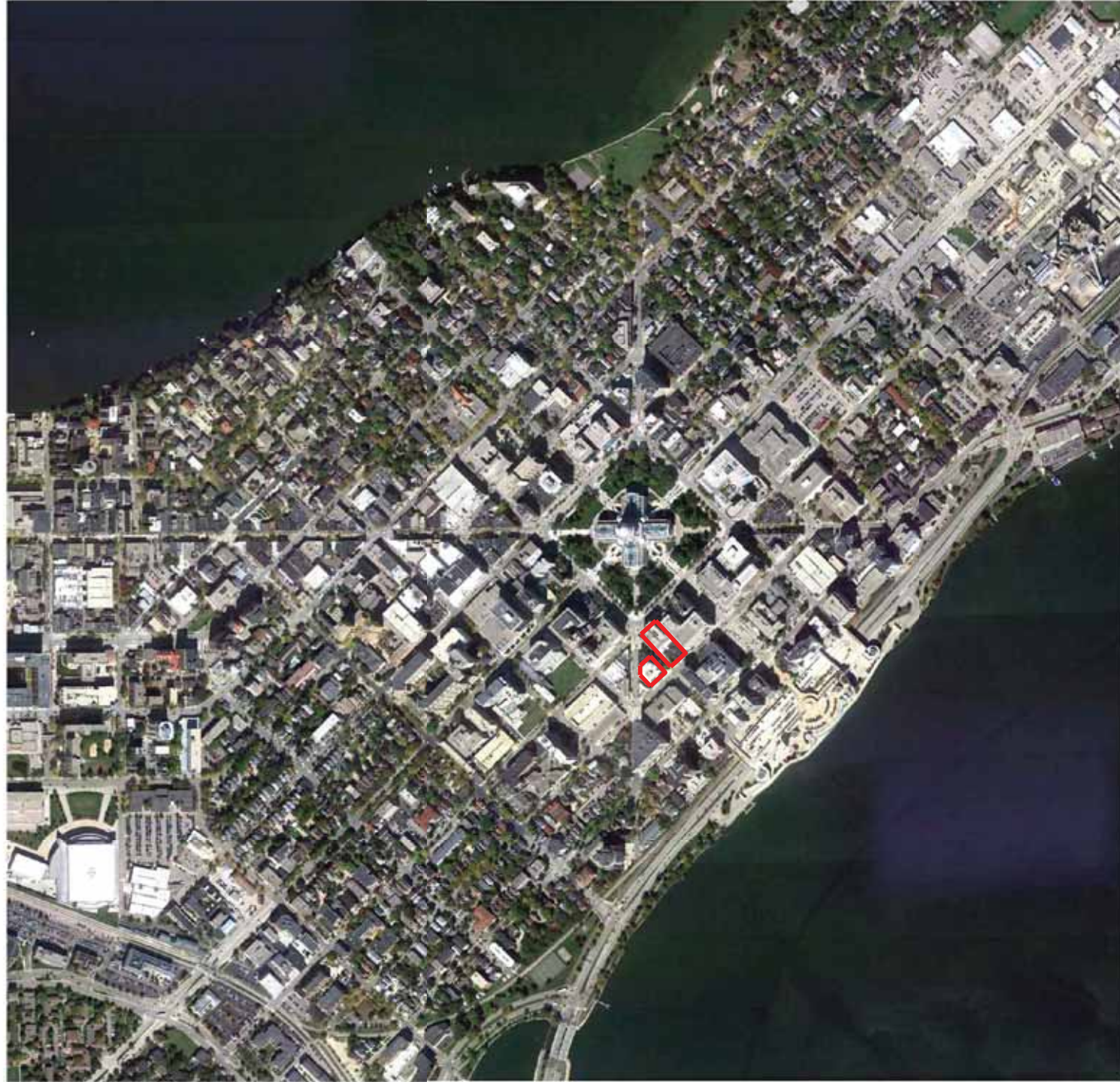
# ANCHOR PROPERTIES REDEVELOPMENT

URBAN DESIGN COMMISSION SUBMISSION: 16 JULY 2014

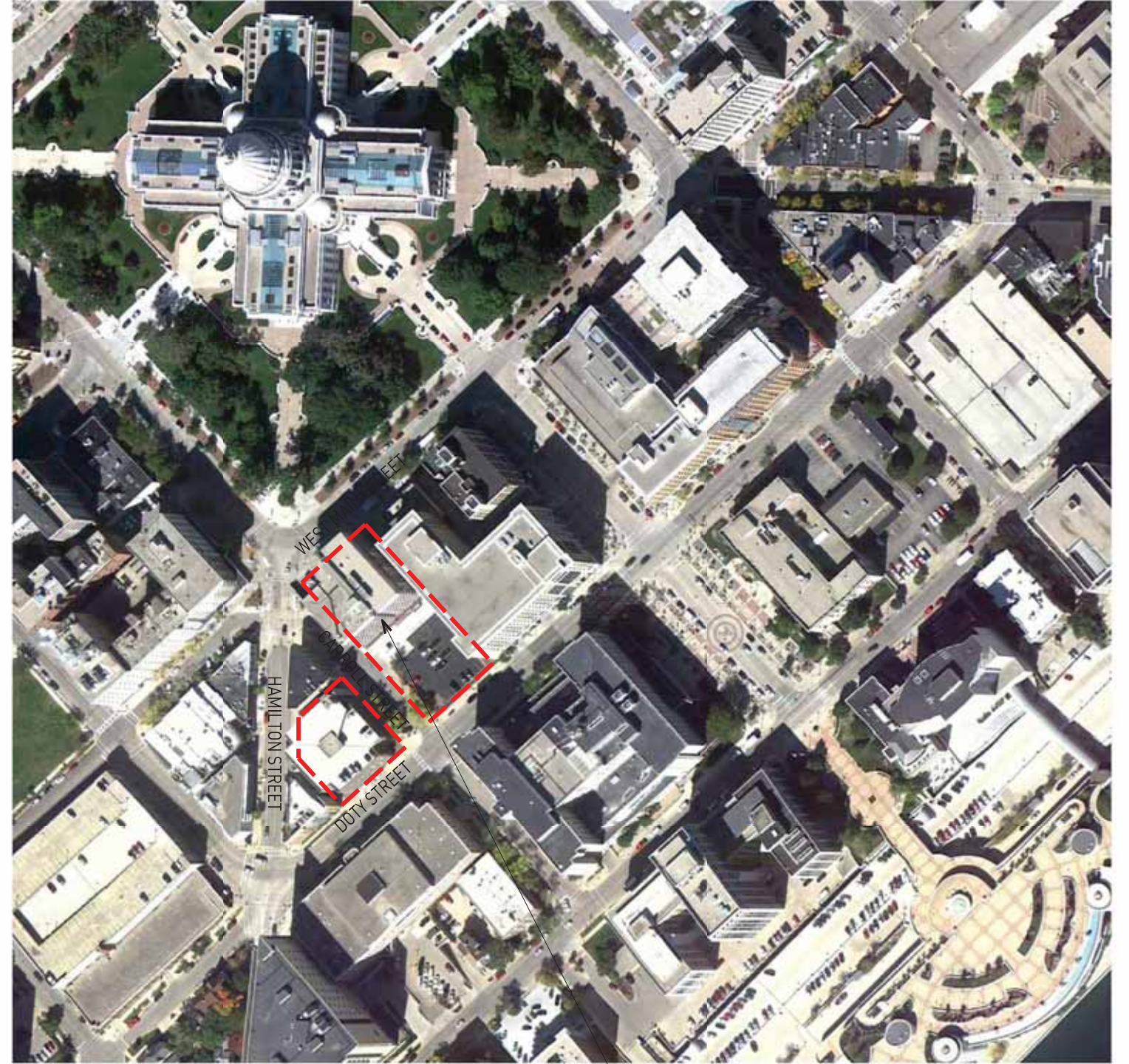


Urban Land Interests

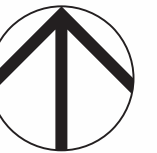
# AREA MAP



# LOCATION MAP



25 WEST MAIN STREET



# ANCHOR PROPERTIES REDEVELOPMENT

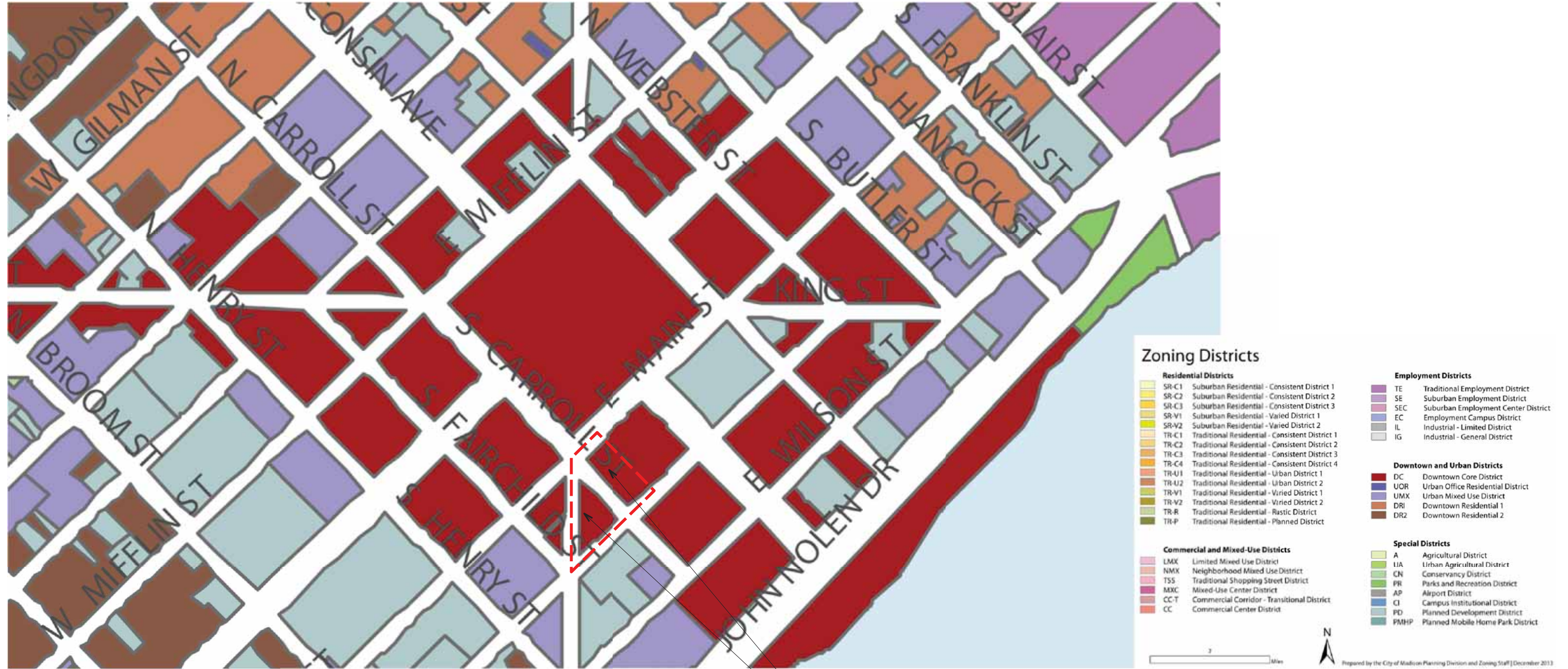
JULY 16, 2014



Urban Land Interests



# ZONING MAP



25 WEST MAIN STREET  
115 SOUTH HAMILTON STREET

## ANCHOR PROPERTIES REDEVELOPMENT

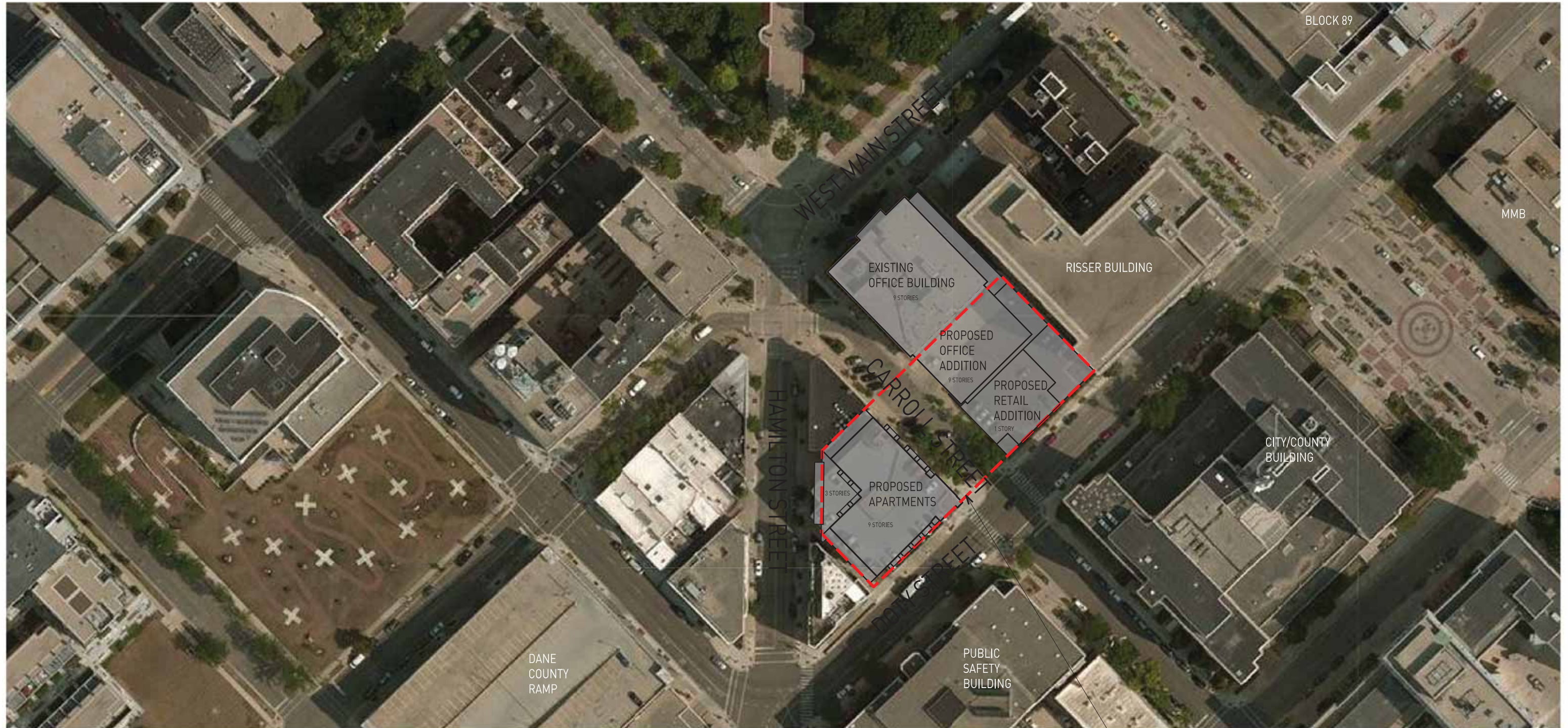
JULY 16, 2014



Urban Land Interests



# AERIAL VIEW



EXTENT OF PROPOSED UNDERGROUND PARKING GARAGE



## ANCHOR PROPERTIES REDEVELOPMENT

JULY 16, 2014



Urban Land Interests



# CONTEXT PLAN



## ANCHOR PROPERTIES REDEVELOPMENT

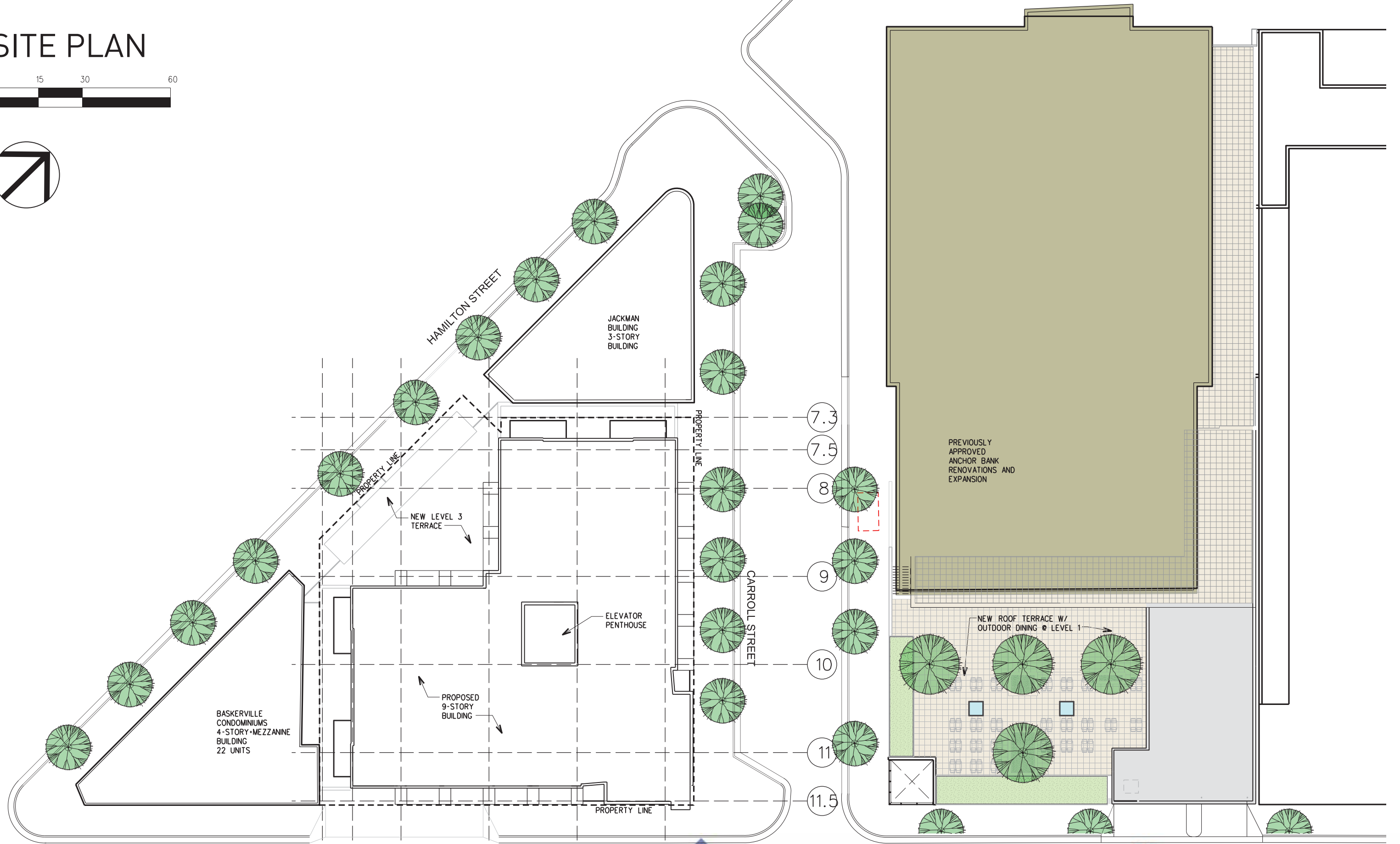
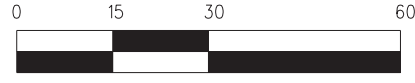
JULY 16, 2014



Urban Land Interests



# SITE PLAN

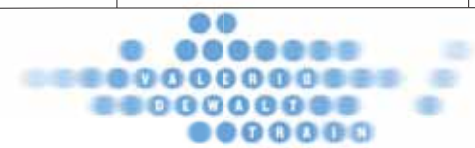


## ANCHOR PROPERTIES REDEVELOPMENT

JULY 16, 2014



Urban Land Interests



# CONTEXT PHOTOS



VIEW 1



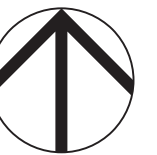
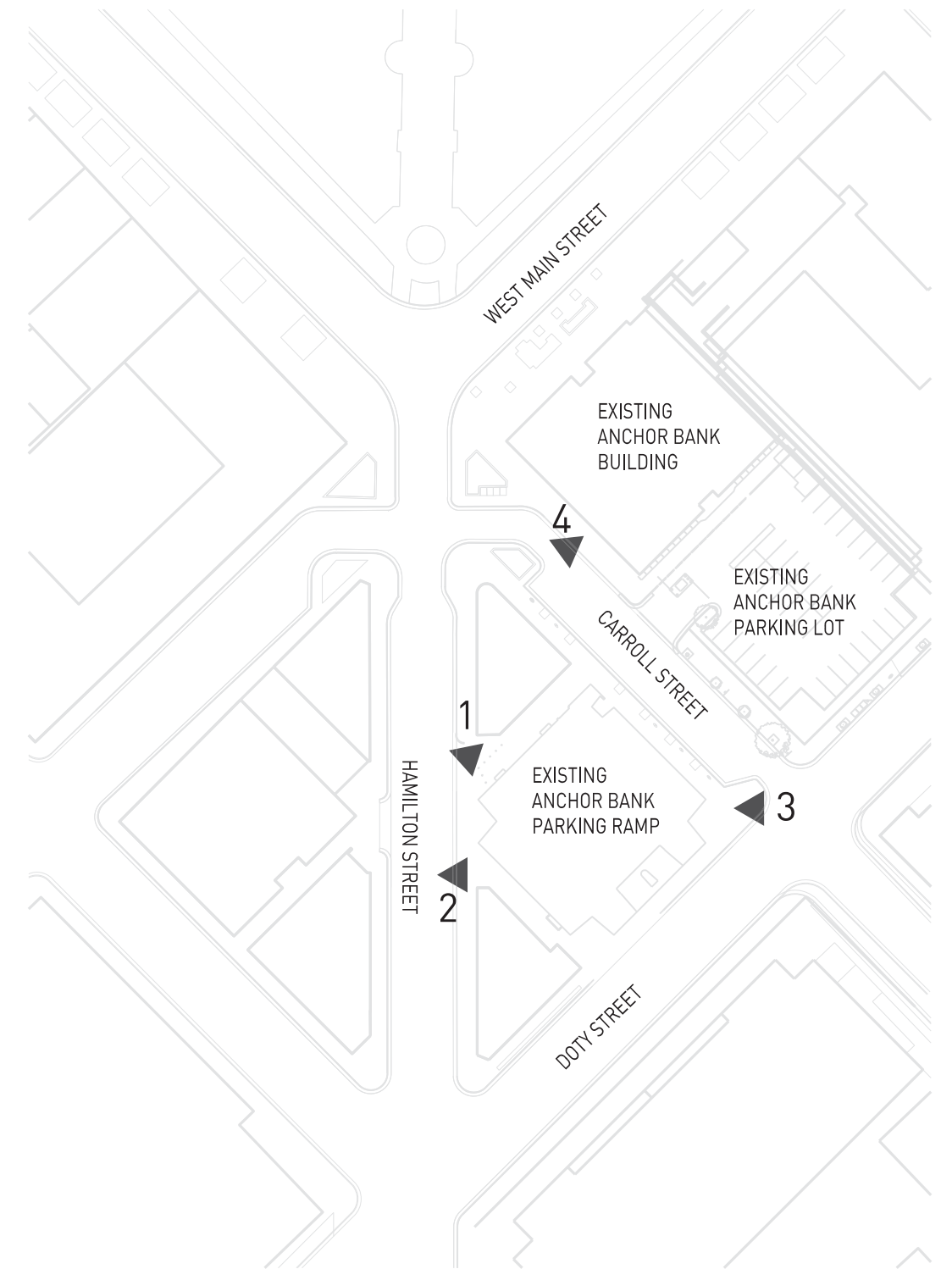
VIEW 2



VIEW 4



VIEW 3



## ANCHOR PROPERTIES REDEVELOPMENT

JULY 16, 2014



Urban Land Interests



# CONTEXT PHOTOS



VIEW 1



VIEW 2



VIEW 3



VIEW 4



## ANCHOR PROPERTIES REDEVELOPMENT

JULY 16, 2014



Urban Land Interests





# CONTEXT PHOTOS



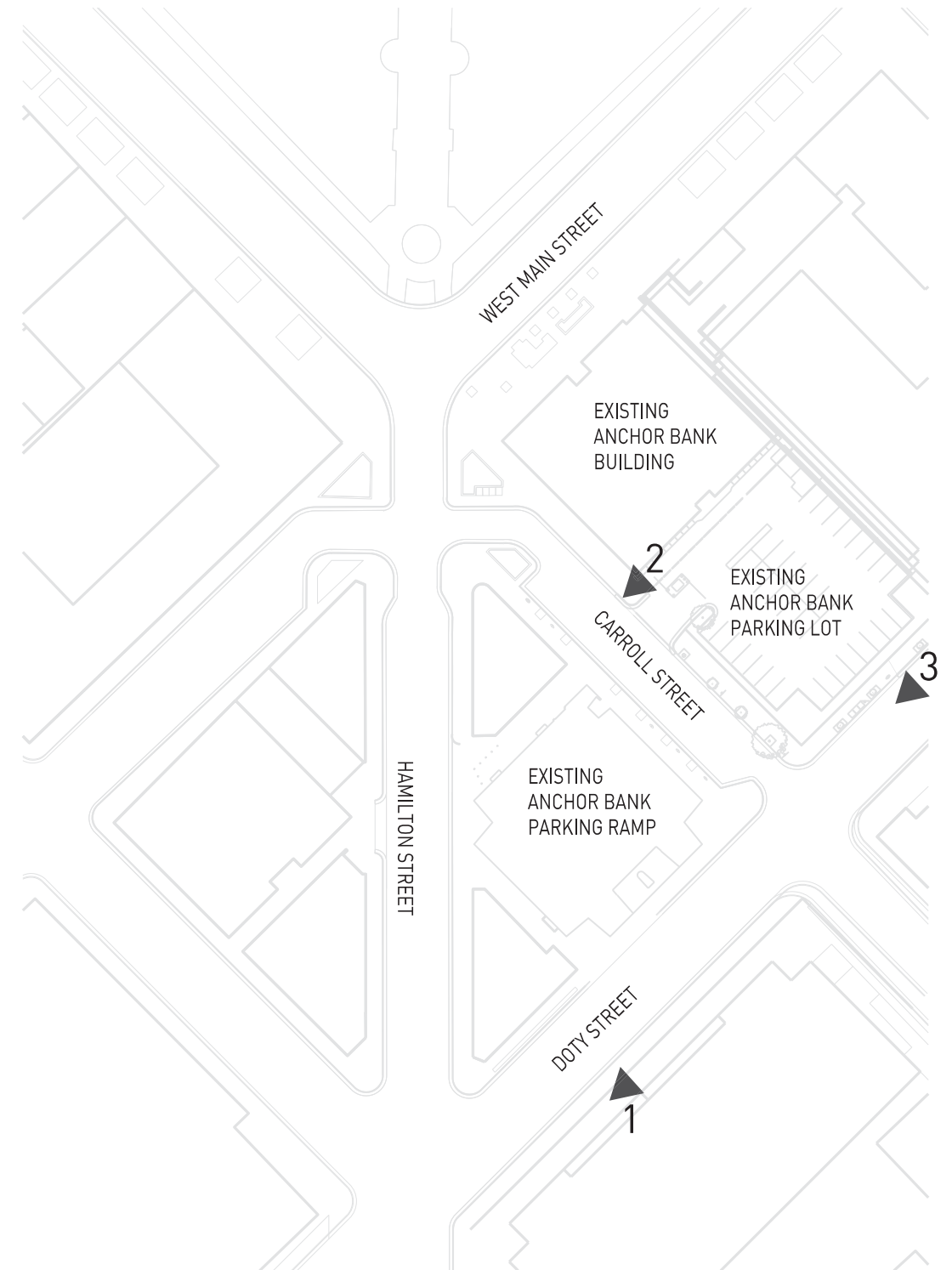
VIEW 1



VIEW 2



VIEW 3



## ANCHOR PROPERTIES REDEVELOPMENT

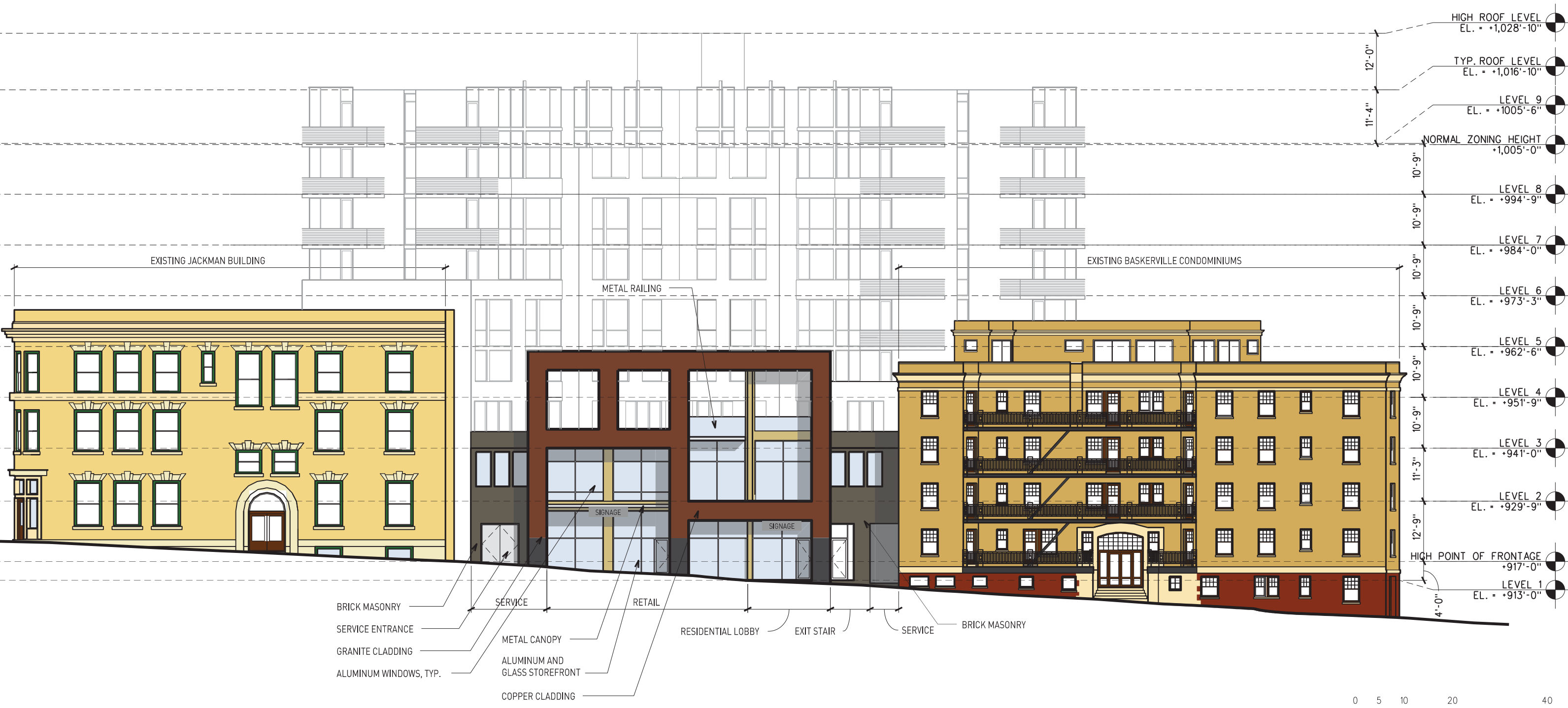
JULY 16, 2014



Urban Land Interests



# RESIDENTIAL ELEVATION - WEST HAMILTON STREET



ANCHOR PROPERTIES REDEVELOPMENT

JULY 16, 2014



Urban Land Interests



# RESIDENTIAL ELEVATION - SOUTHEAST DOTY STREET

RENOVATED  
ANCHOR BANK  
BUILDING



ANCHOR PROPERTIES REDEVELOPMENT

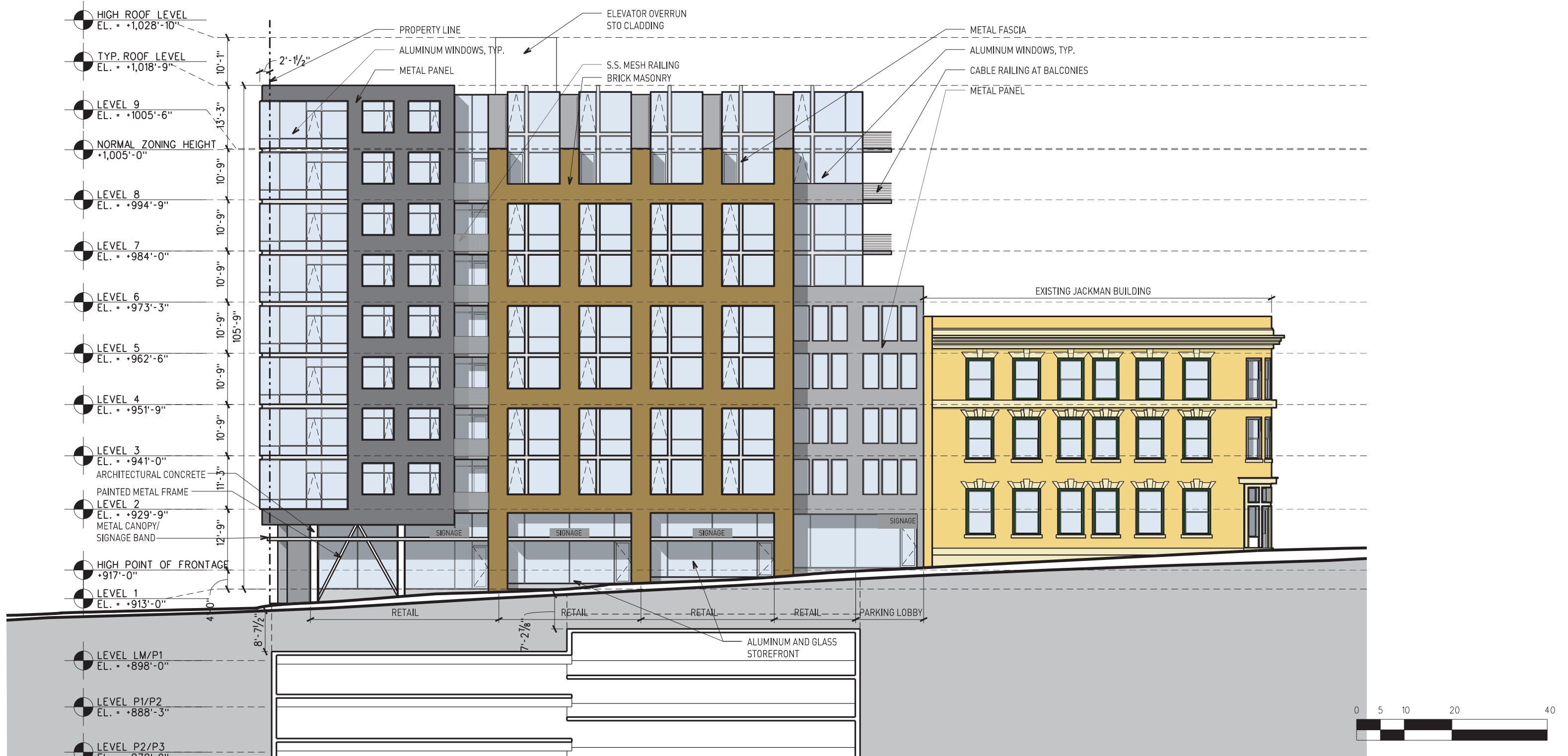
JULY 16, 2014



Urban Land Interests



# RESIDENTIAL ELEVATION - NORTHEAST CARROLL STREET



ANCHOR PROPERTIES REDEVELOPMENT

JULY 16, 2014



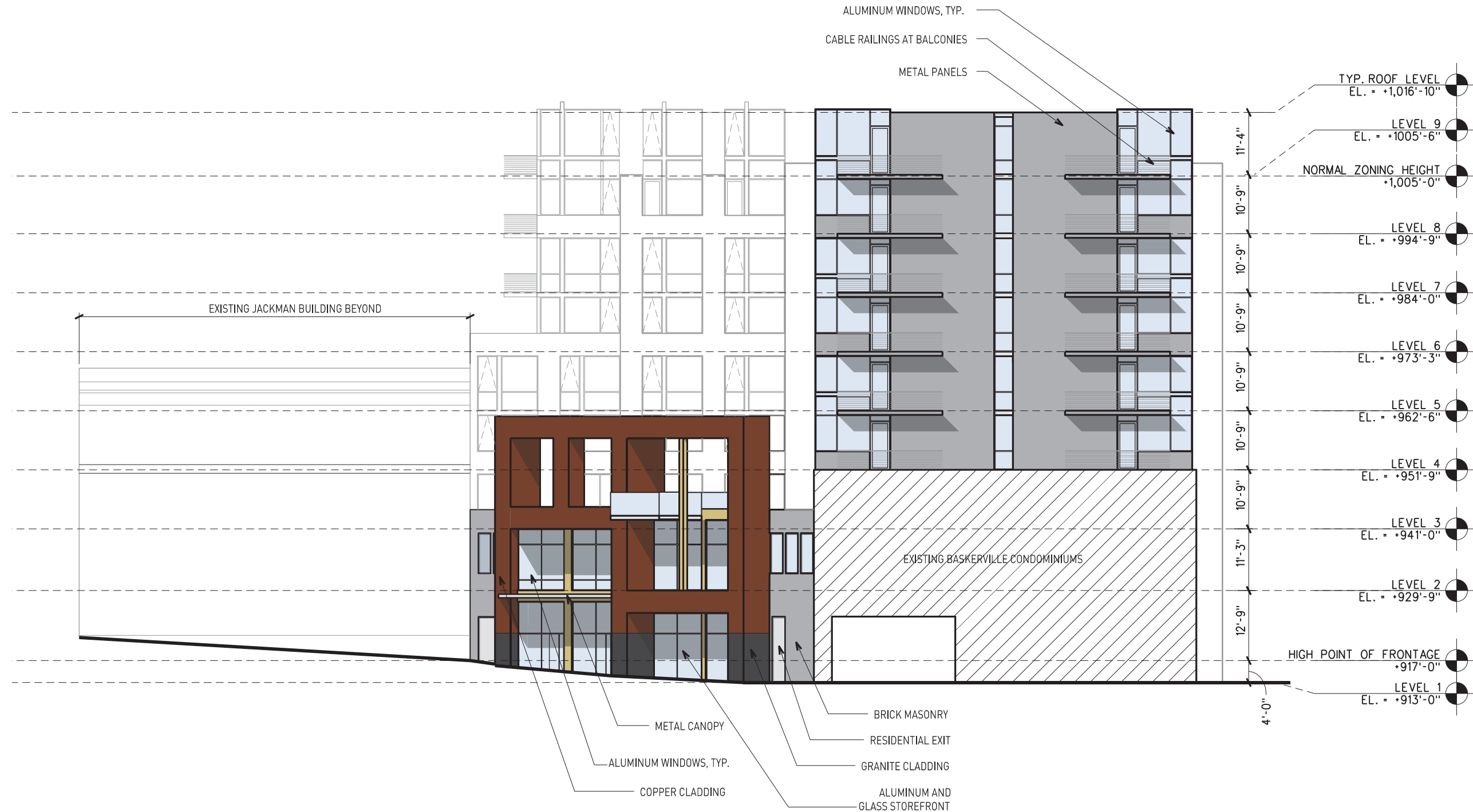
Urban Land Interests



# RESIDENTIAL ELEVATION - NORTHWEST ABOVE JACKMAN BUILDING



# RESIDENTIAL ELEVATION - SOUTHWEST ABOVE BASKERVILLE BUILDING



ANCHOR BANK - PROPERTY DEVELOPMENT

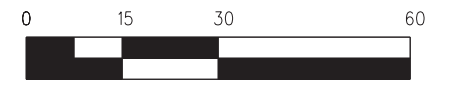
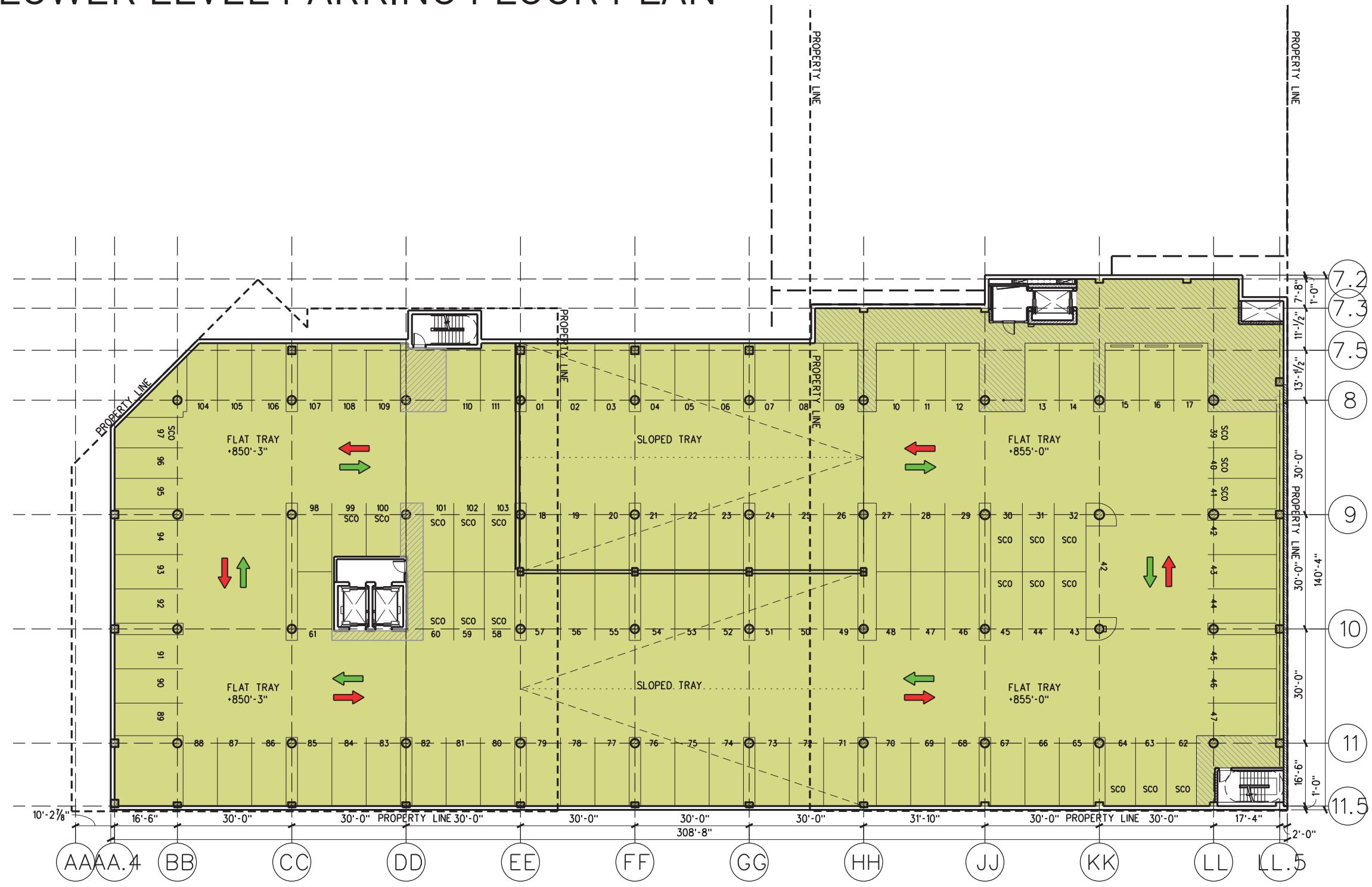
JULY 16, 2014



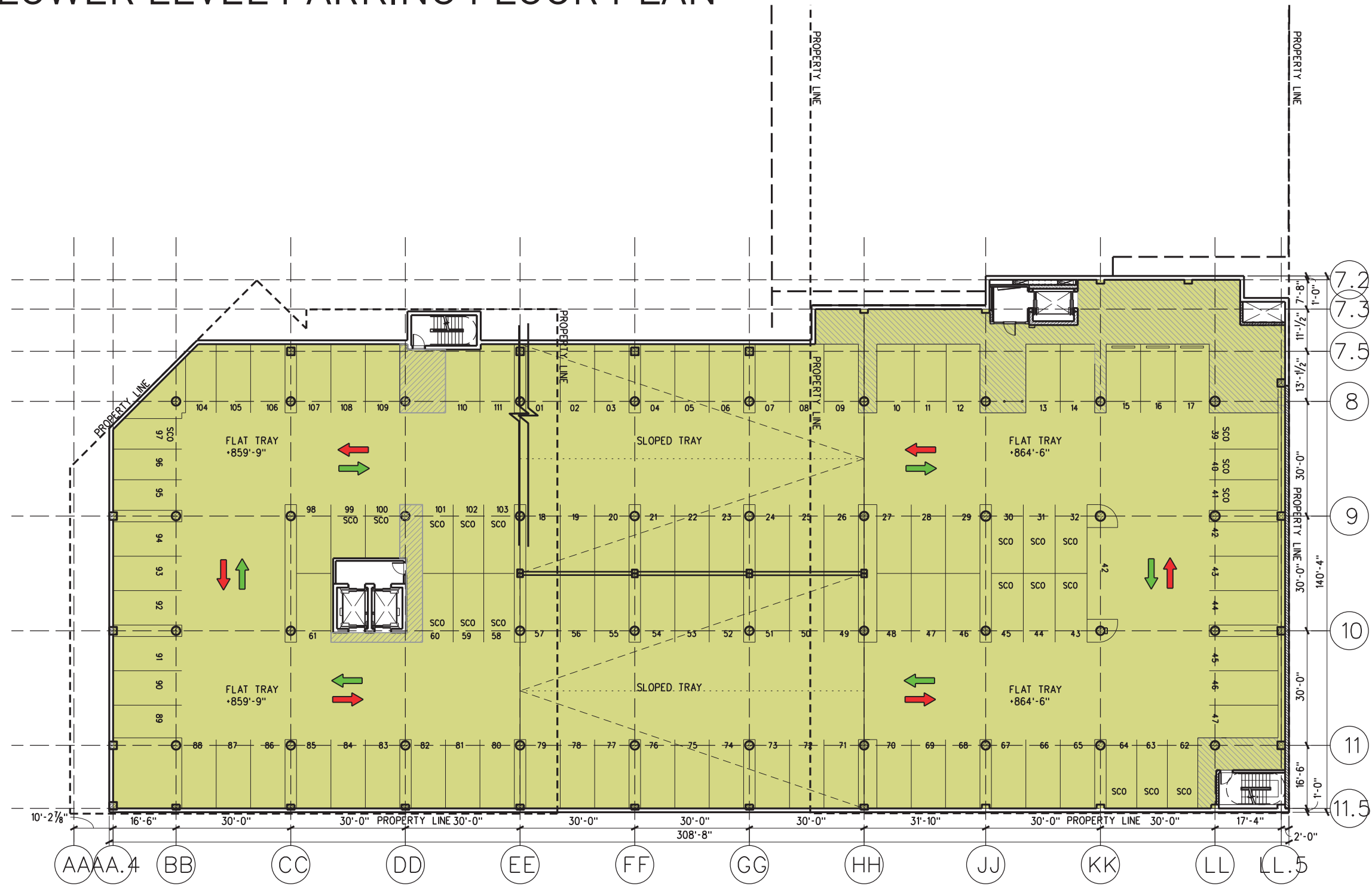
Urban Land Interests



# LEVEL P5 - LOWER LEVEL PARKING FLOOR PLAN



# LEVEL P4 - LOWER LEVEL PARKING FLOOR PLAN



ANCHOR PROPERTIES REDEVELOPMENT

JULY 16, 2014

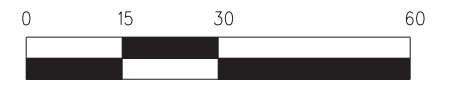
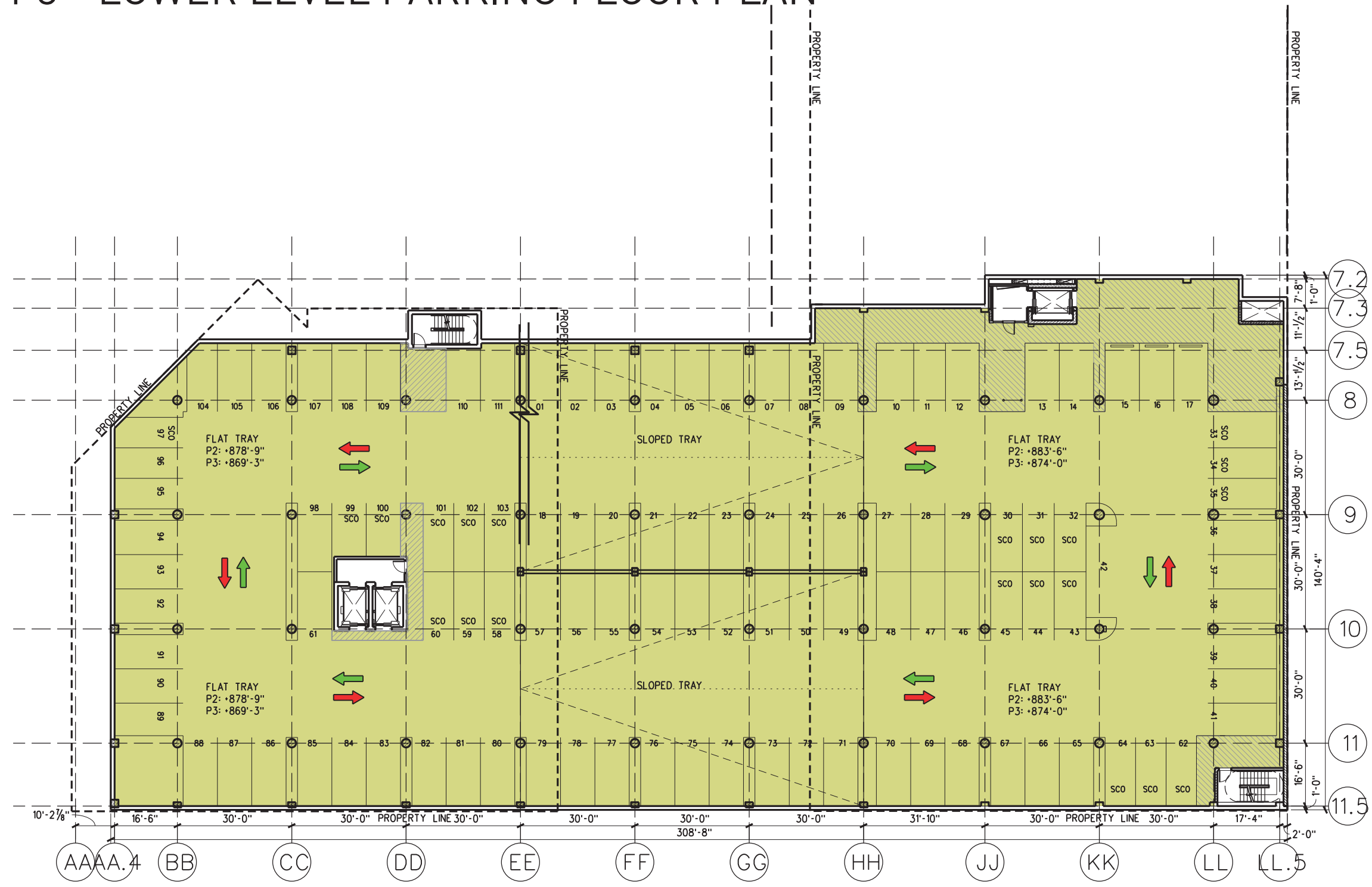


Urban Land Interests



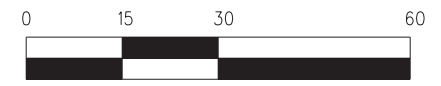
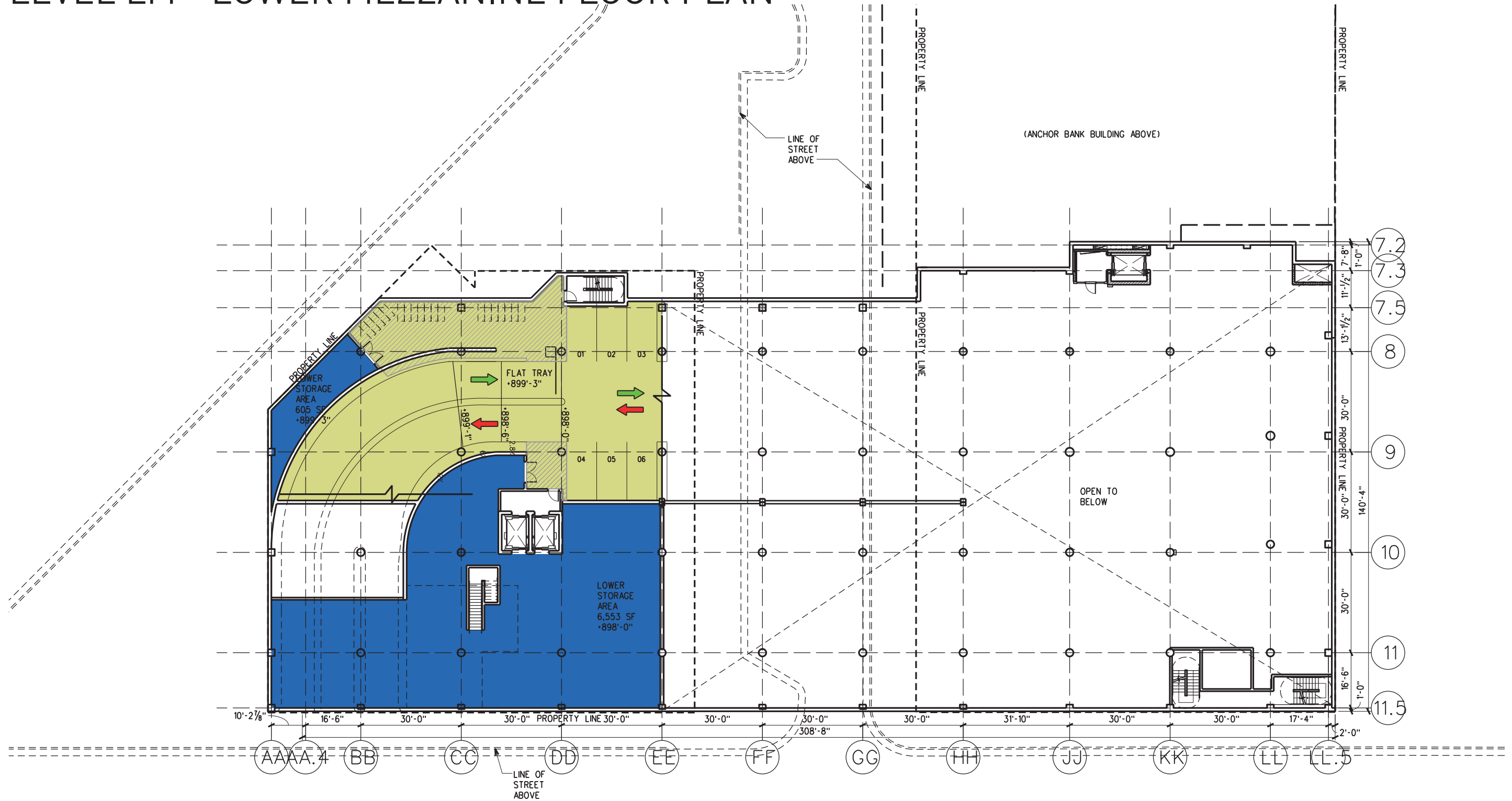


# LEVEL P2 & P3 - LOWER LEVEL PARKING FLOOR PLAN

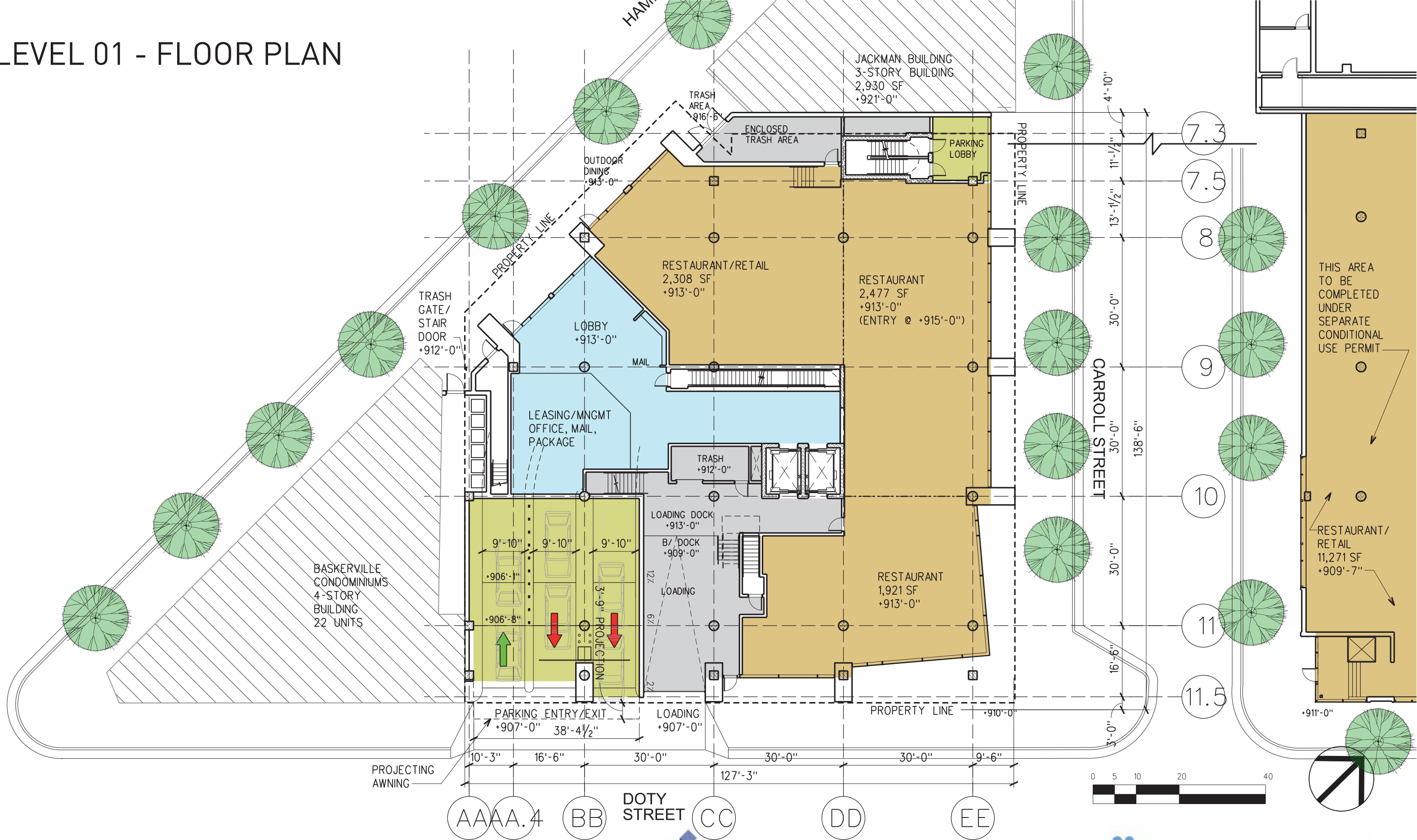




# LEVEL LM - LOWER MEZZANINE FLOOR PLAN



# LEVEL 01 - FLOOR PLAN



## ANCHOR PROPERTIES REDEVELOPMENT

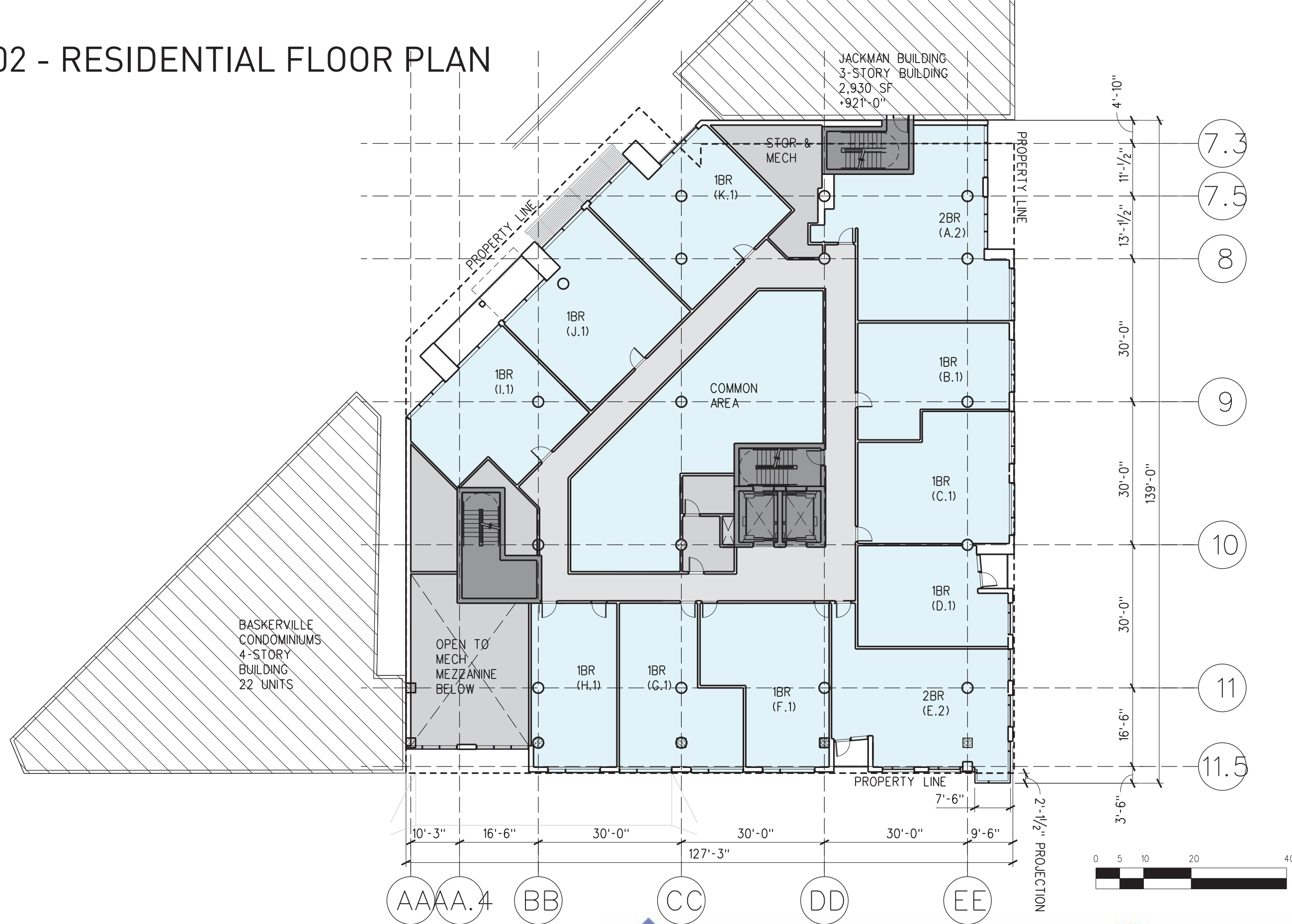
JULY 16, 2014



Urban Land Interests



# LEVEL 02 - RESIDENTIAL FLOOR PLAN



## ANCHOR PROPERTIES REDEVELOPMENT

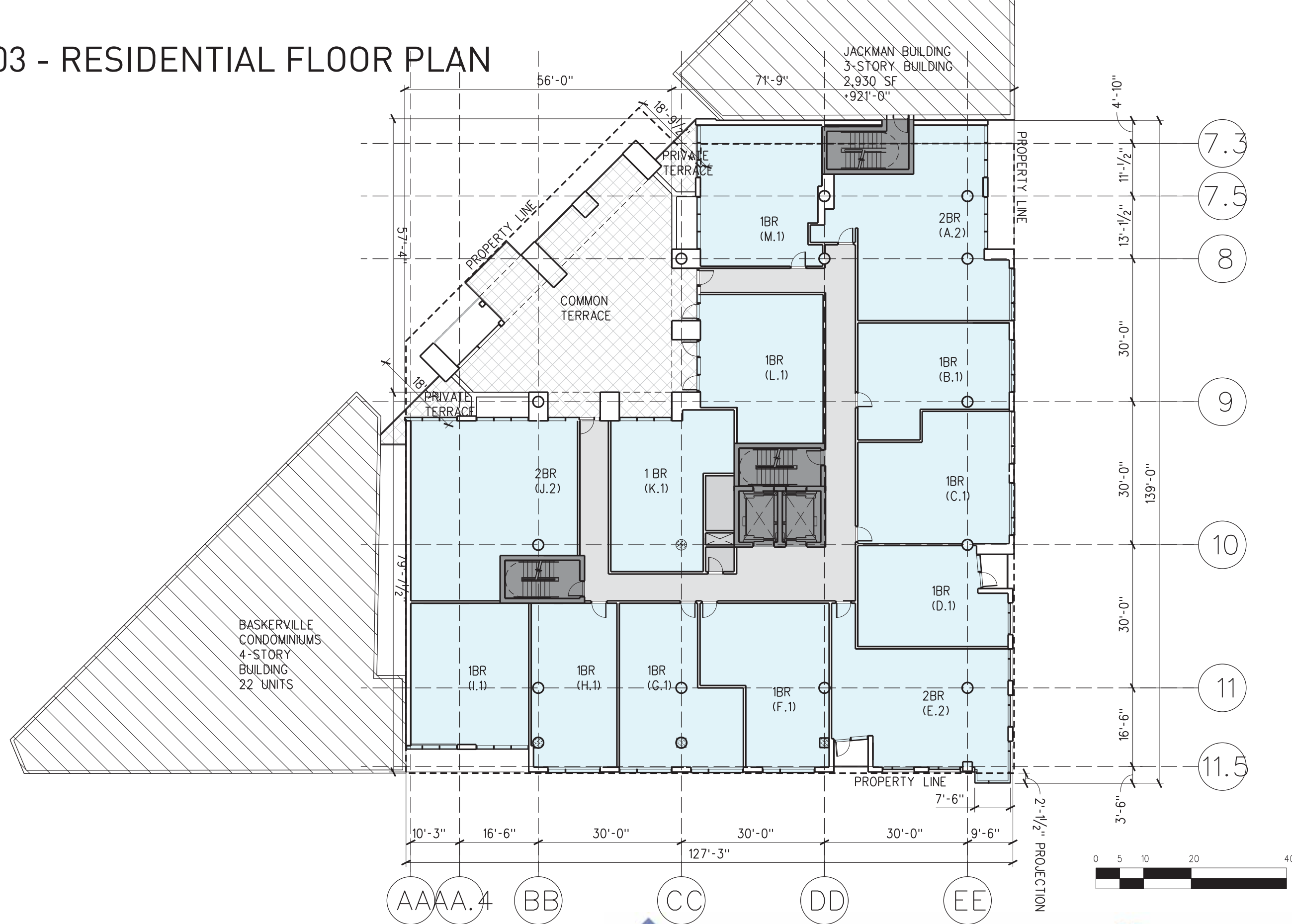
JULY 16, 2014



Urban Land Interests



# LEVEL 03 - RESIDENTIAL FLOOR PLAN



ANCHOR PROPERTIES REDEVELOPMENT

JULY 16, 2014

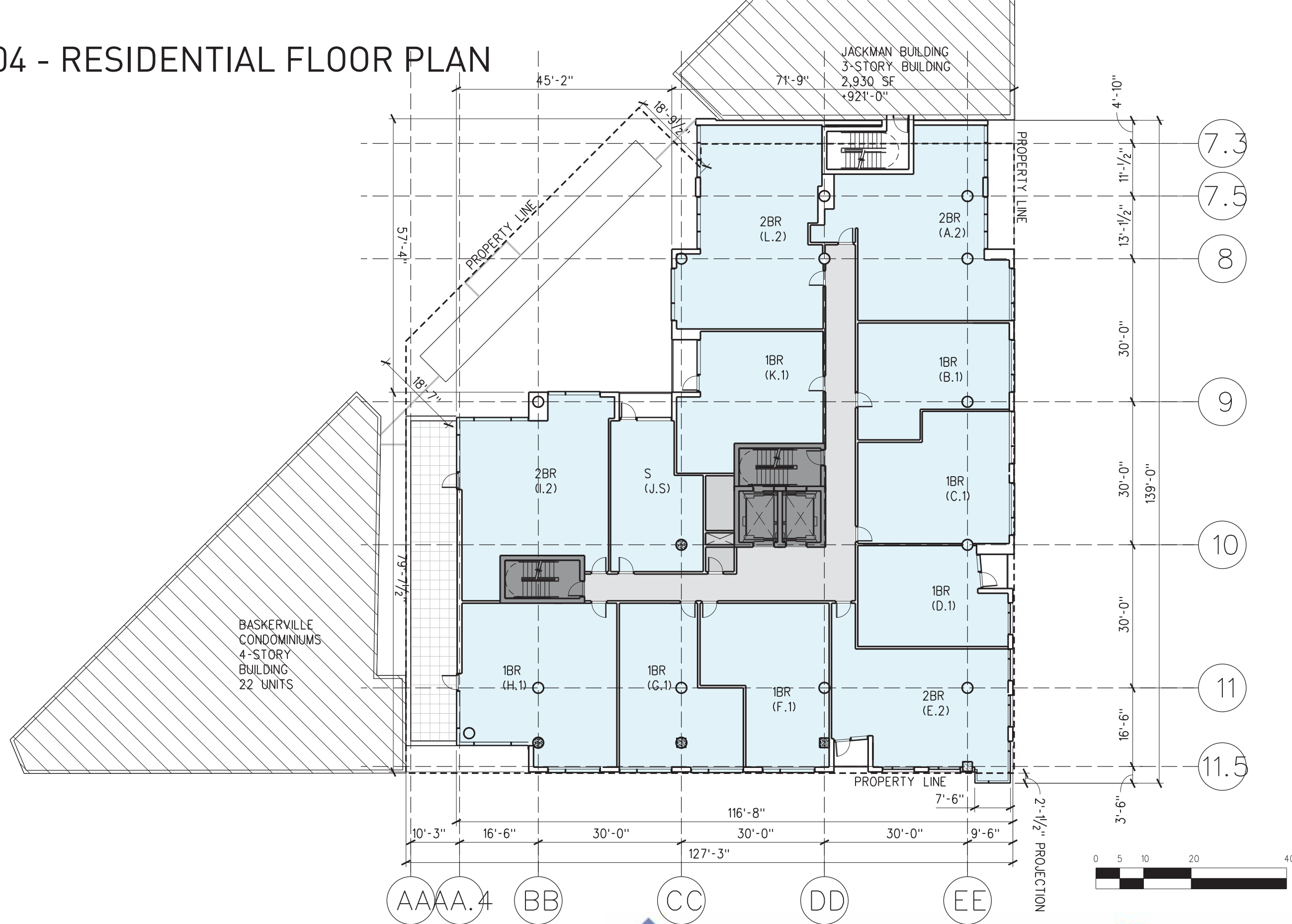


Urban Land Interests



PREV  
APPF  
ANCH  
RENC  
EXPA

# LEVEL 04 - RESIDENTIAL FLOOR PLAN



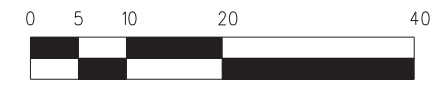
PREV  
 APPF  
 ANCH  
 REN  
 EXPA

## ANCHOR PROPERTIES REDEVELOPMENT

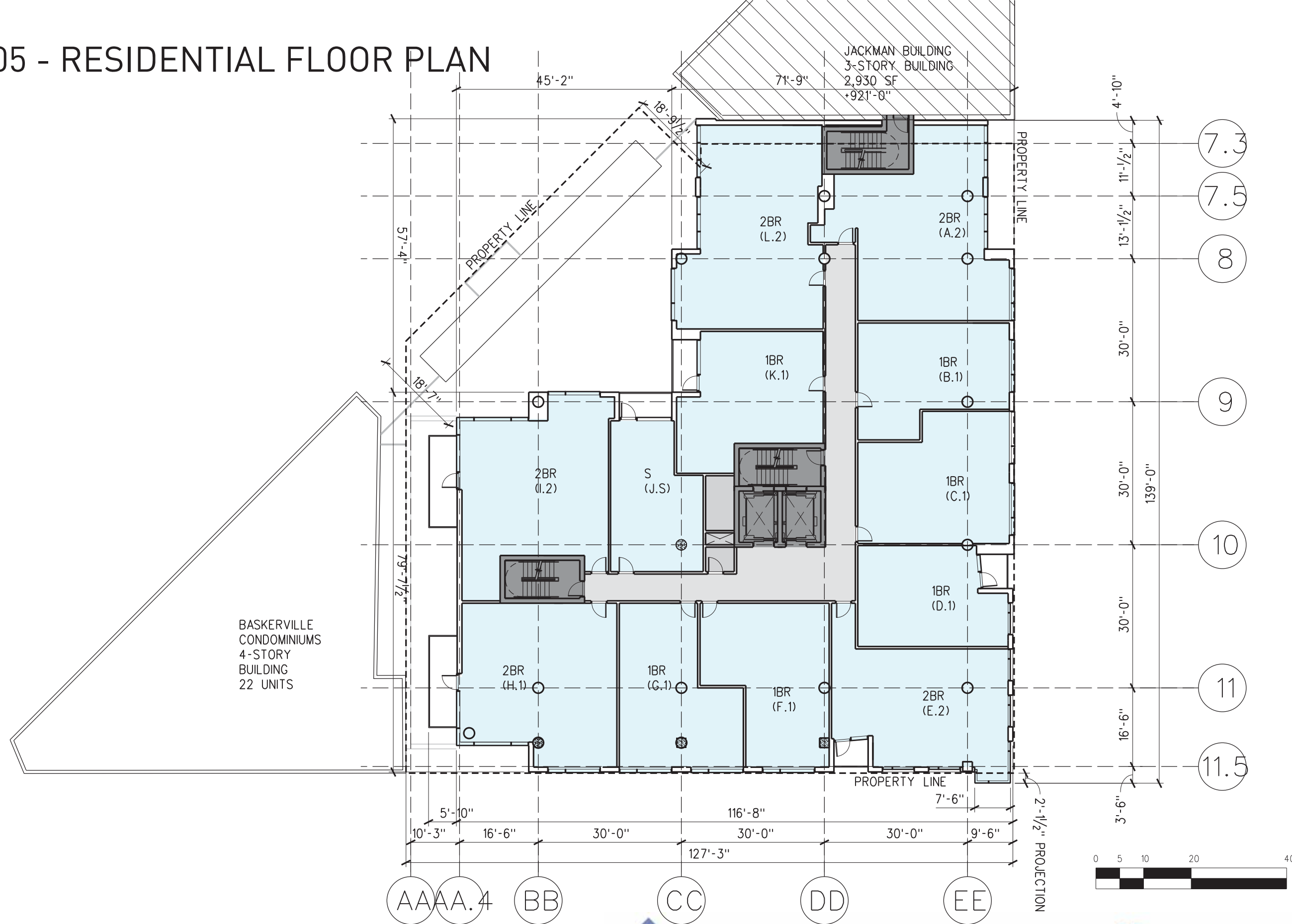
JULY 16, 2014



Urban Land Interests



# LEVEL 05 - RESIDENTIAL FLOOR PLAN



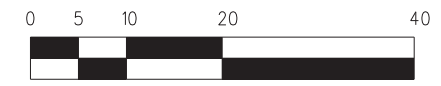
PREV  
APPF  
ANCH  
REN  
EXPA

## ANCHOR PROPERTIES REDEVELOPMENT

JULY 16, 2014

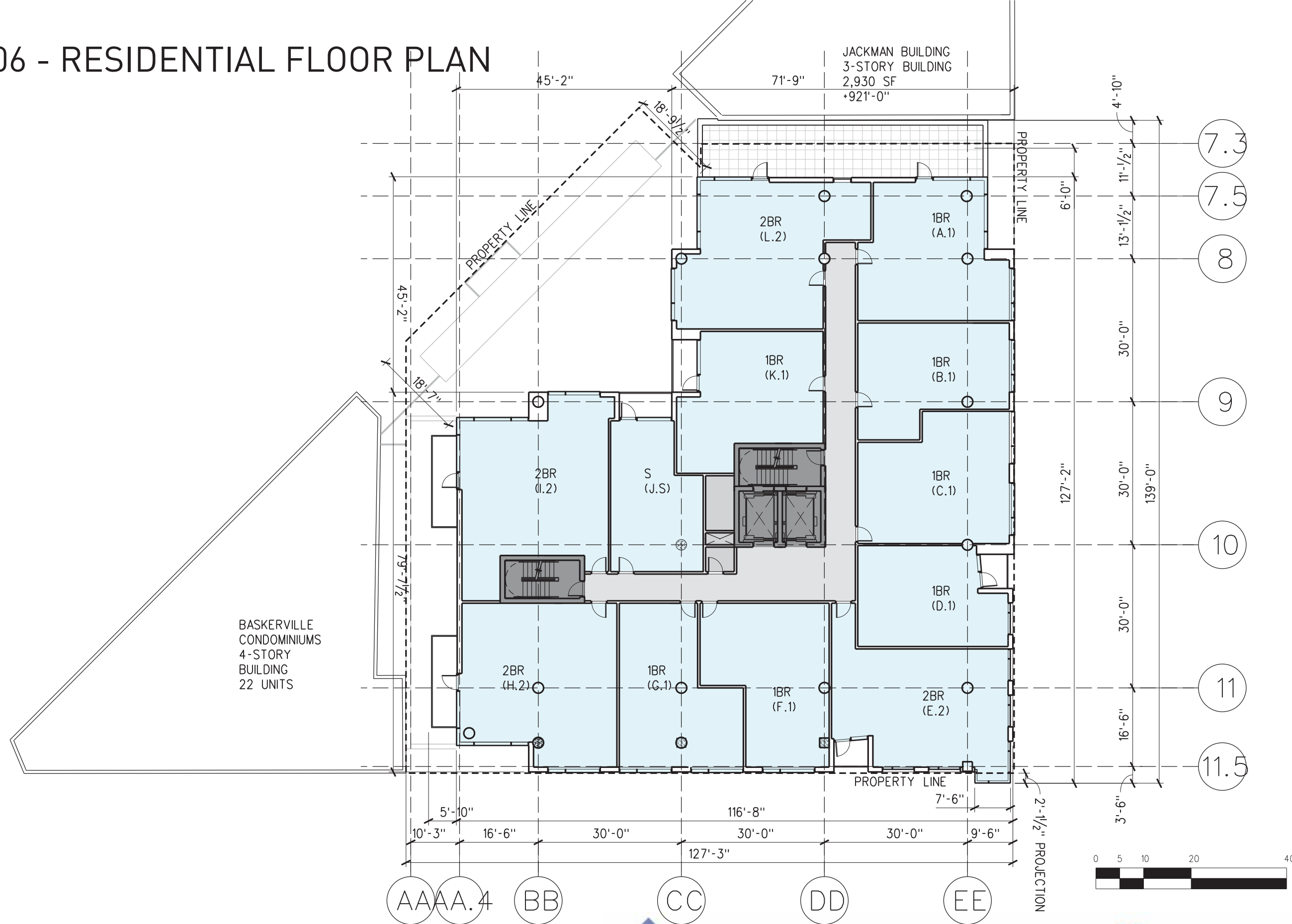


Urban Land Interests



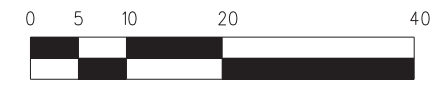


# LEVEL 06 - RESIDENTIAL FLOOR PLAN



BASKERVILLE  
CONDOMINIUMS  
4-STORY  
BUILDING  
22 UNITS

JACKMAN BUILDING  
3-STORY BUILDING  
2,930 SF  
+921'-0"



ANCHOR PROPERTIES REDEVELOPMENT

JULY 16, 2014

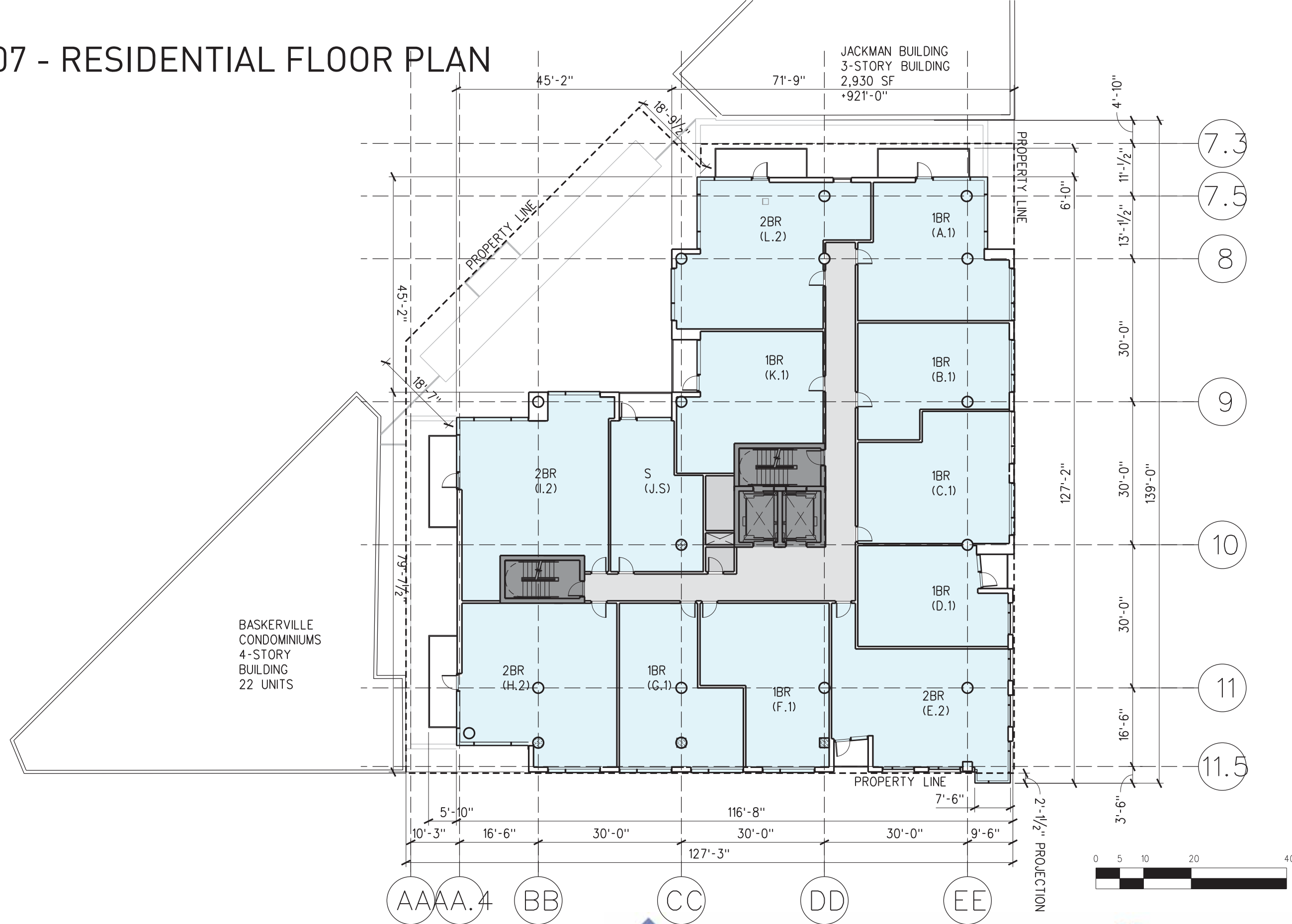


Urban Land Interests



PREV  
APPF  
ANCH  
REN  
EXPA

# LEVEL 07 - RESIDENTIAL FLOOR PLAN



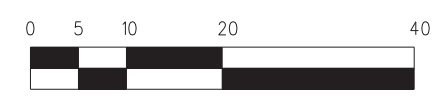
PREV  
APPF  
ANCH  
REN  
EXPA

## ANCHOR PROPERTIES REDEVELOPMENT

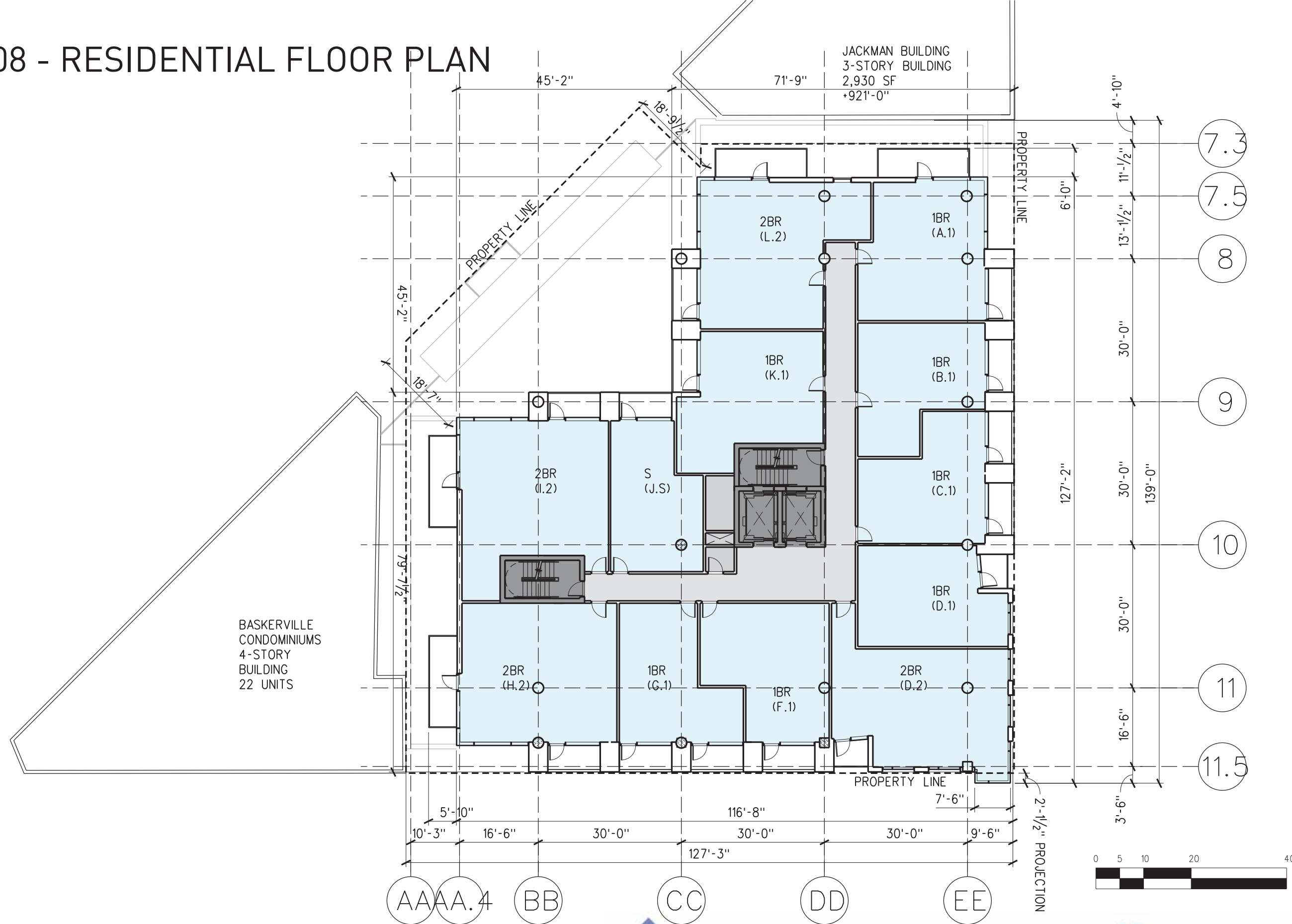
JULY 16, 2014



Urban Land Interests



# LEVEL 08 - RESIDENTIAL FLOOR PLAN



PREV  
APPF  
ANCH  
RENC  
EXPA

## ANCHOR PROPERTIES REDEVELOPMENT

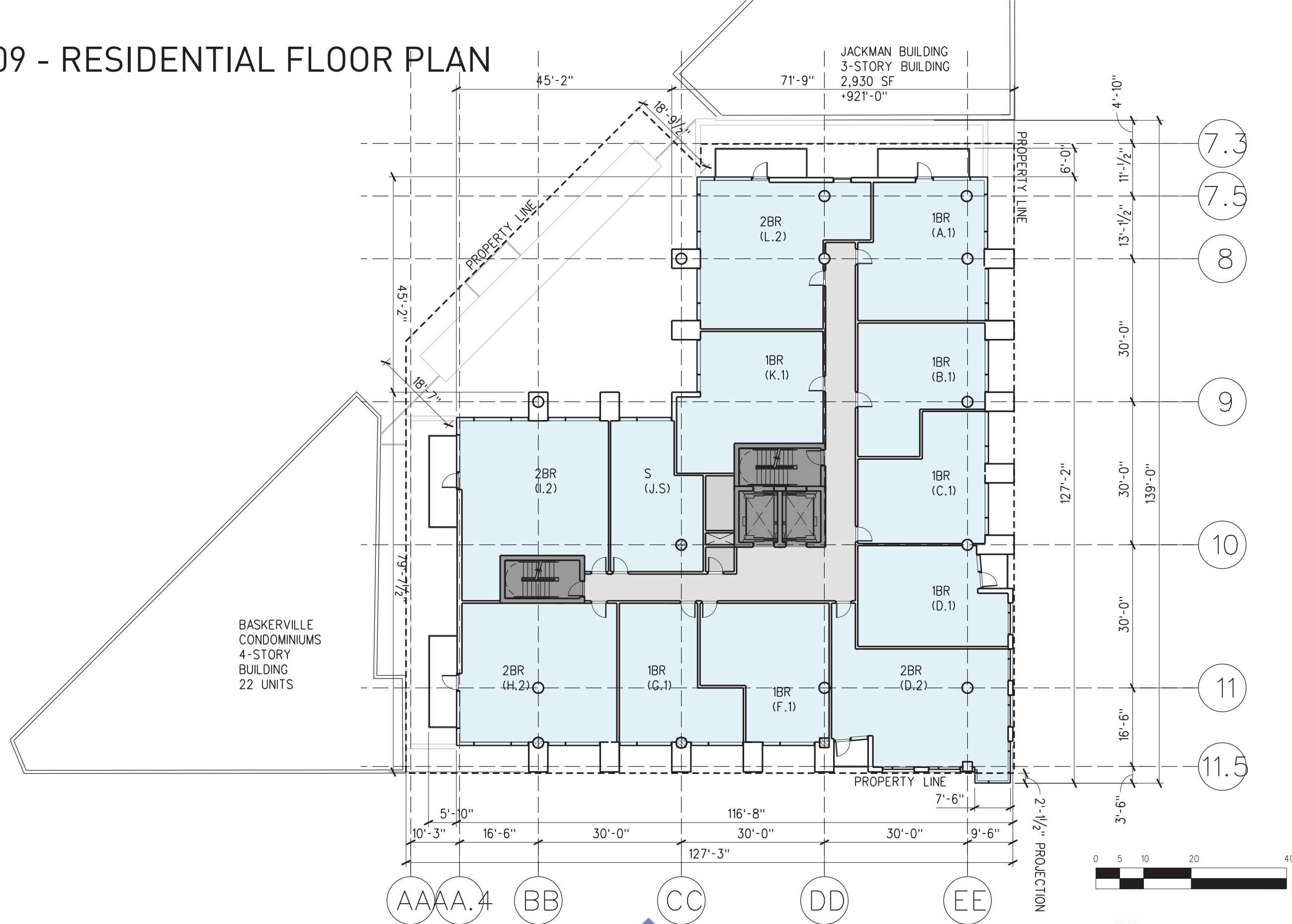
JULY 16, 2014



Urban Land Interests



# LEVEL 09 - RESIDENTIAL FLOOR PLAN



BASKERVILLE  
CONDOMINIUMS  
4-STORY  
BUILDING  
22 UNITS

JACKMAN BUILDING  
3-STORY BUILDING  
2,930 SF  
+921'-0"

## ANCHOR PROPERTIES REDEVELOPMENT

JULY 16, 2014



Urban Land Interests



PREV  
APPF  
ANCH  
REN  
EXPA