



MADISON REGION NATURE EVERYWHERE

MADISON COMMON COUNCIL

March 5th, 2024



Why Nature



Nature Everywhere



Existing Efforts



Join us!

Why nature?

44

Hours per week children spend on screens

10

Minutes per day children are playing outside

19

Percent of adults who spend 10 minutes per day or less outside



Why nature?



Why is it important?

- Mental and physical health
- Social and emotional skill building
- Improved academic performance
- Creating future environmentalists
- Provide equitable access

Nature Everywhere



Create equitable access to nature everywhere children live, learn and play in your community

Nature Everywhere

- 100 communities by 2025
- Madison 1 of 19 initial communities
- Builds off Madison Connecting Children to Nature Initiative

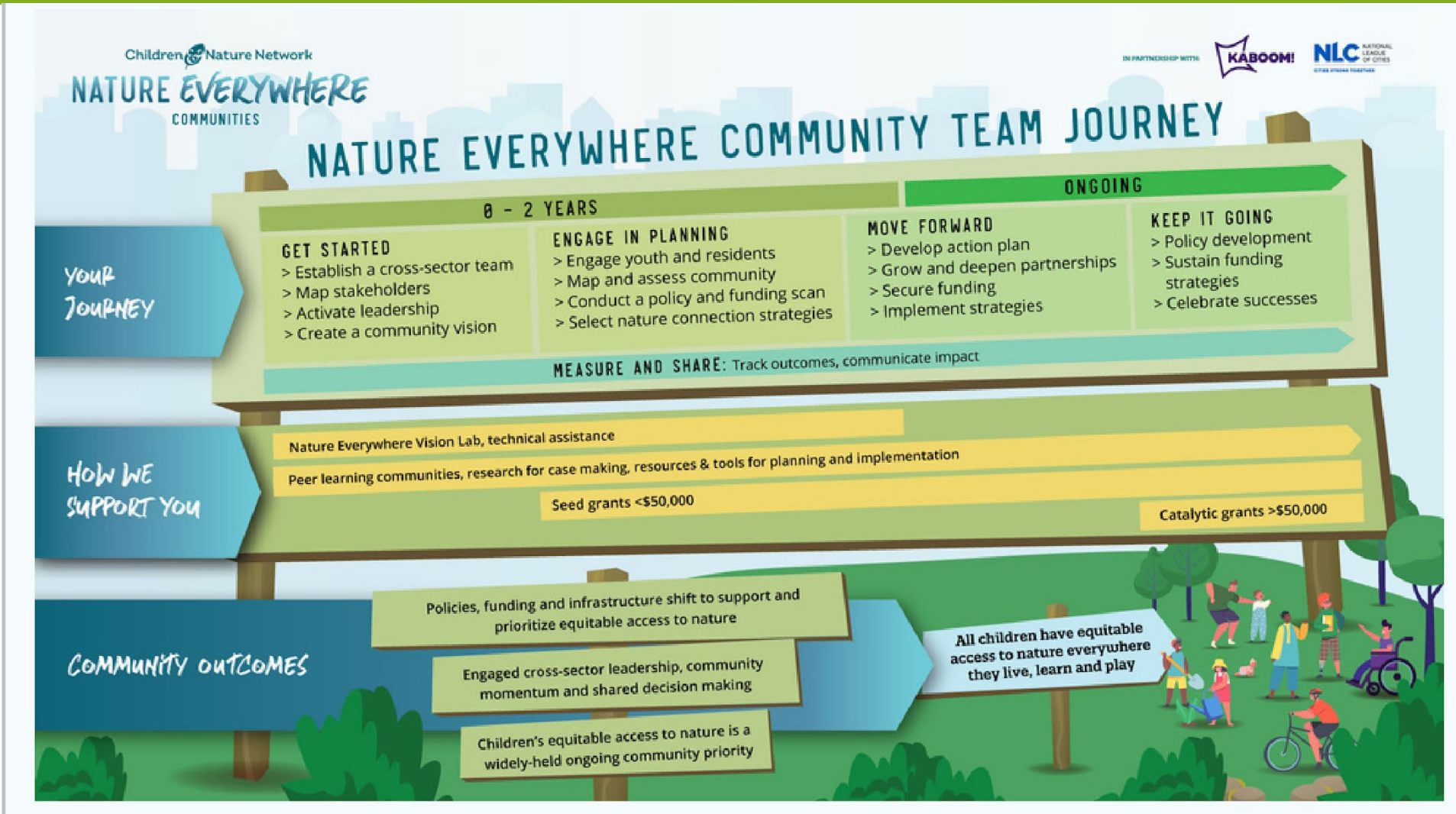


Madison Region Leadership Team

Left to right:

- Besty Parker – Aldo Leopold Nature Center
- Ashley Pletzer-MMSSD
- Justin Svingen-Public Health
- Alder Charles Myadze-District 17
- Tanya Zastrow- Olbrich Botanical Gardens

Nature Everywhere

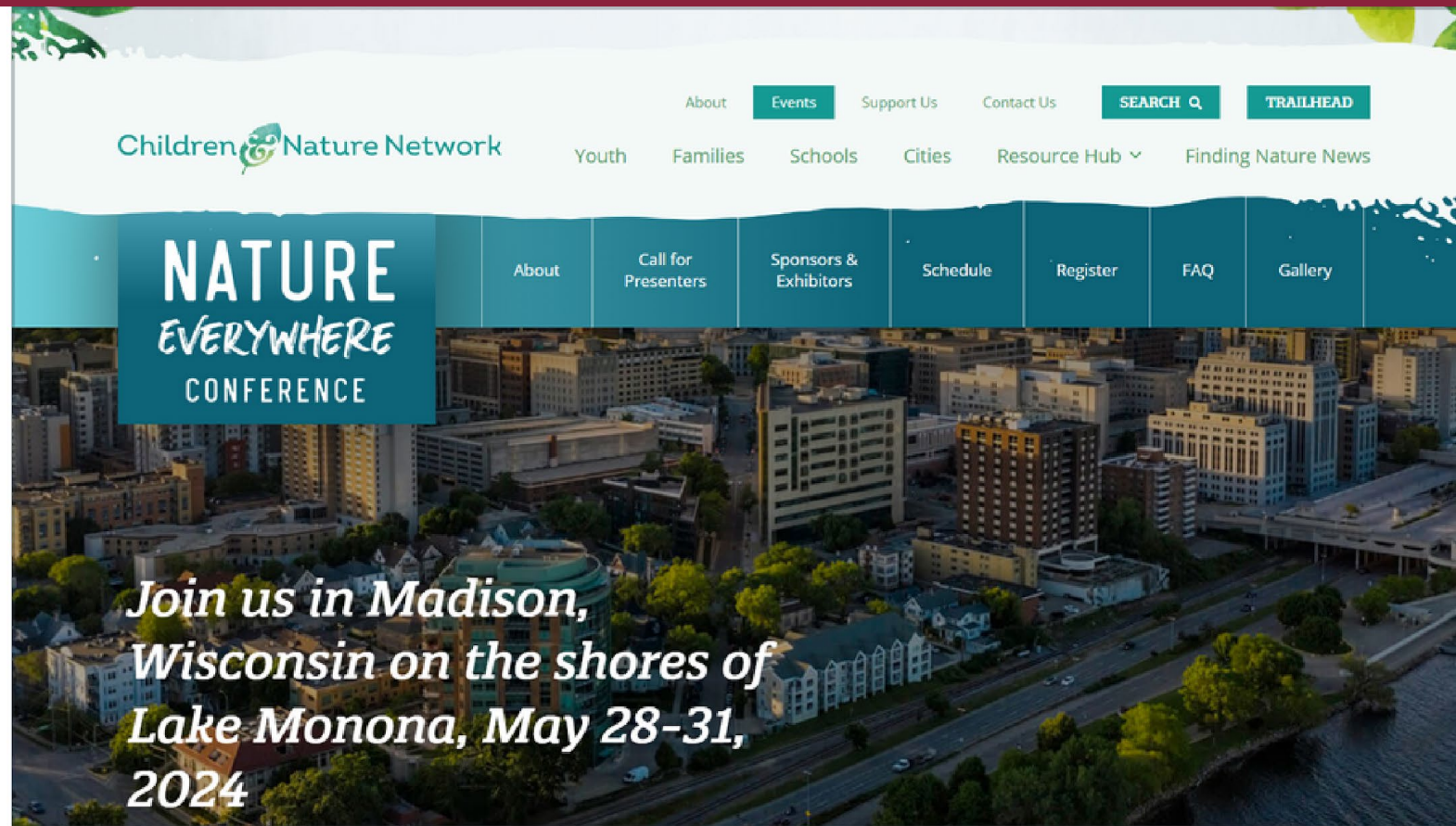


Madison Connecting Children to Nature Initiative

Builds on Madison Connecting Children to Nature Initiative



Join us



<https://www.childrenandnature.org/conference/>

Join us

Nature Everywhere Day, Madison
June 1st, 2024



<https://www.childrenandnature.org/event/nature-everywhere-day/>

Thank you!

Contact:

natureeverywhere@cityofmadison.com

Website:

<https://www.cityofmadison.com/parks/about/natureeverywhere.cfm>



City of Madison Webpage